

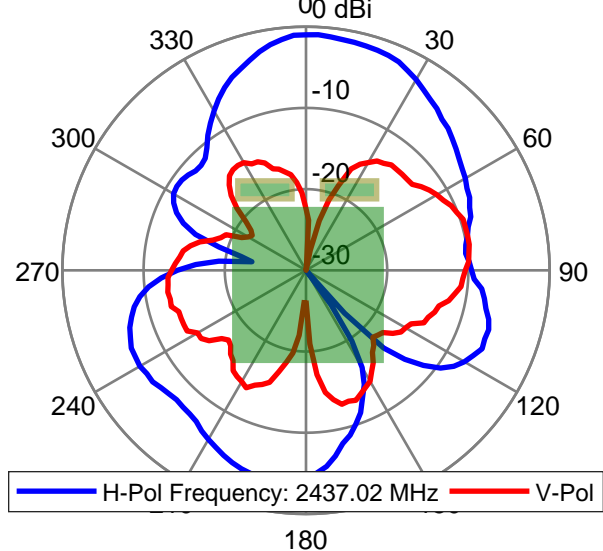
Unit Tested.....ALLEGION CORE
Mfr./Model.....**CORE WLAN**
ID Number.....001
Antenna Type...PIFA

RF Detector....Vector Network Analyzer
Mfr./Model.....Rohde & Schwarz ZVB-20
Resolution BW.. 10.000000 kHz
Detector Function...Voltage
Span...N/A

RF Source.....Vector Network Analyzer
RF Level.....10.000000 dBm
Transmit Ant...DUAL POL QUAD RIDGE
Height.....1.5 M
Range.....3 M

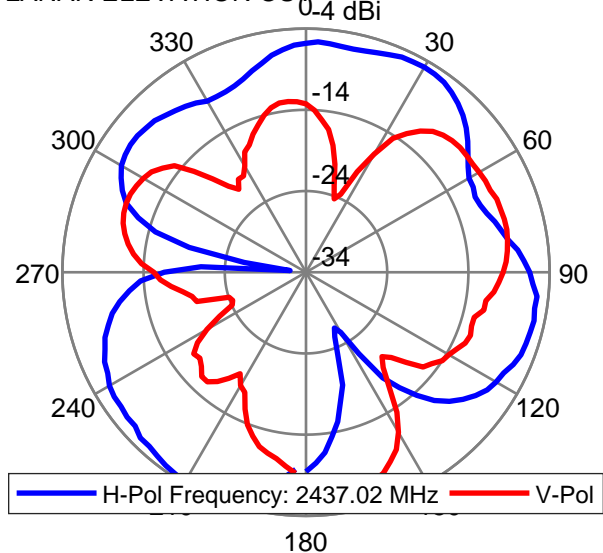
Ant. Location....Center of Turntable

Comments.....COPLANAR ELEVATION CUT

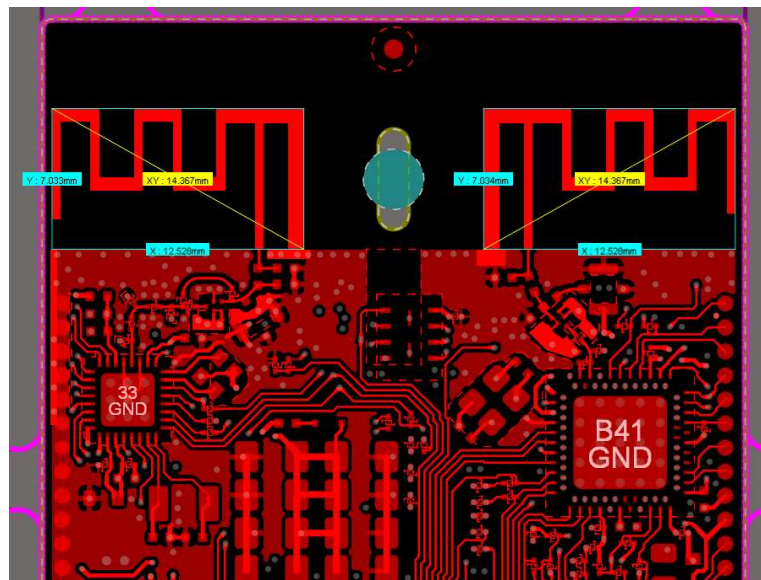


Ant. Location....Center of Turntable

Comments.....XPLANAR ELEVATION CUT



BLE & WIFI PIFA Antenna Dimensions



The BLE Antenna is dimensioned X- axis 12.528mm and Y- axis 7.033mm.
The WIFI Antenna is dimensioned X- axis 12.528mm and Y- axis 7.034mm.

WLAN ANTENNA PEAK MEASURED GAIN: 0 dBi.

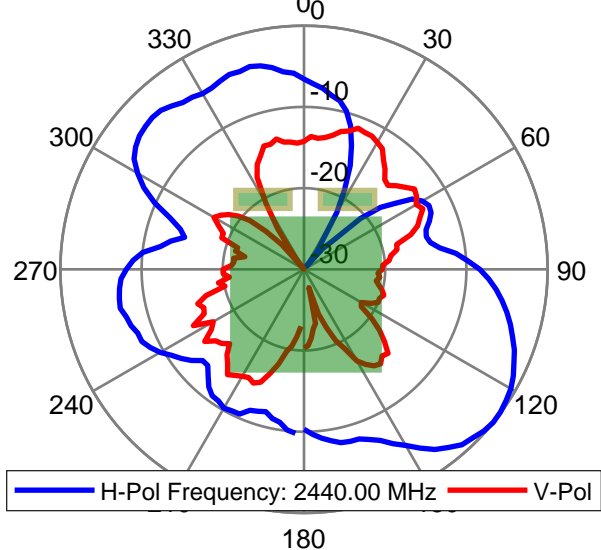
Unit Tested.....ALLEGION CORE
Mfr./Model.....CORE BLE
ID Number.....001
Antenna Type...PIFA

RF Detector....Vector Network Analyzer
Mfr./Model.....Rohde & Schwarz ZVB-20
Resolution BW.. 10.000000 kHz
Detector Function...Voltage
Span...N/A

RF Source.....Vector Network Analyzer
RF Level.....10.000000 dBm
Transmit Ant...DUAL POL QUAD RIDGE
Height.....1.5 M
Range.....3 M

Ant. Location....Center of Turntable

Comments.....COPLANAR ELEVATION CUT



BLE ANTENNA PEAK MEASURED GAIN: 0 dBi.

Ant. Location....Center of Turntable

Comments.....XPLANAR ELEVATION CUT

