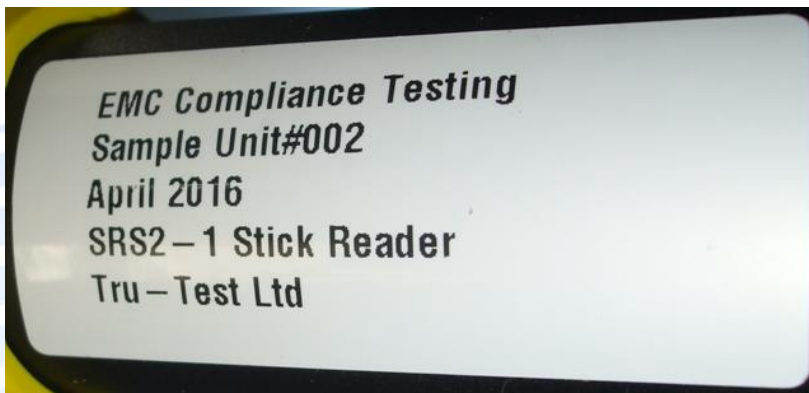


9. PHOTOGRAPHS

External Photos



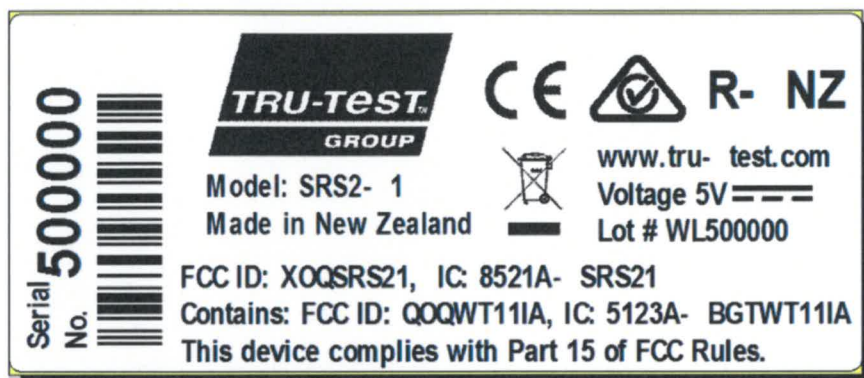


ENC
Technologies



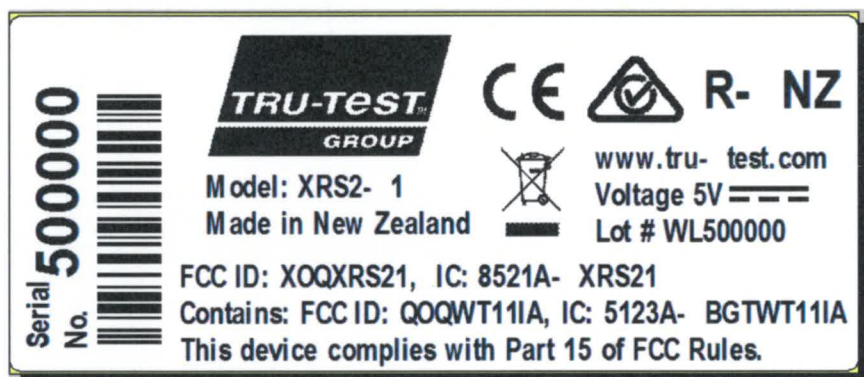
Marketing Approval (Graphical Format and Layout) – SRS2-1 XRS2-1

(Graphical Format and Layout for Serial Number and Ratings Label)



Zebra file name: SRS2_SN.lbl

Model name: SRS2-1



Zebra file name: XRS2_SN.lbl

Model name: XRS2-1

(Both SRS2-1 and XRS2-1 are Bluetooth enabled).

Notes:**Environment** Outdoor, all-weather farm use –15 to +50 °C.**Material** White Gloss Polypropylene Permanent (refer Item Spec 828821)**Adhesive** Permanent self-adhesive on the underside.**Dimensions** 69.3 x 29.5 mm corner radius 2.0 mm.**Colours** Black text/graphics on white background.**FCC** directive requires that the artwork on this label be displayed visibly, legibly and indelibly. The label material, adhesive, printing method and printing ink should be suitable to meet these requirements.**Bluetooth Module:**

XRS2-1 and SRS2-1 models contain BlueGiga Bluetooth module WT11i-A with the following FCC and IC designations:

FCC ID: QOQWT11IA

IC: 5123A-BGTWT11IA