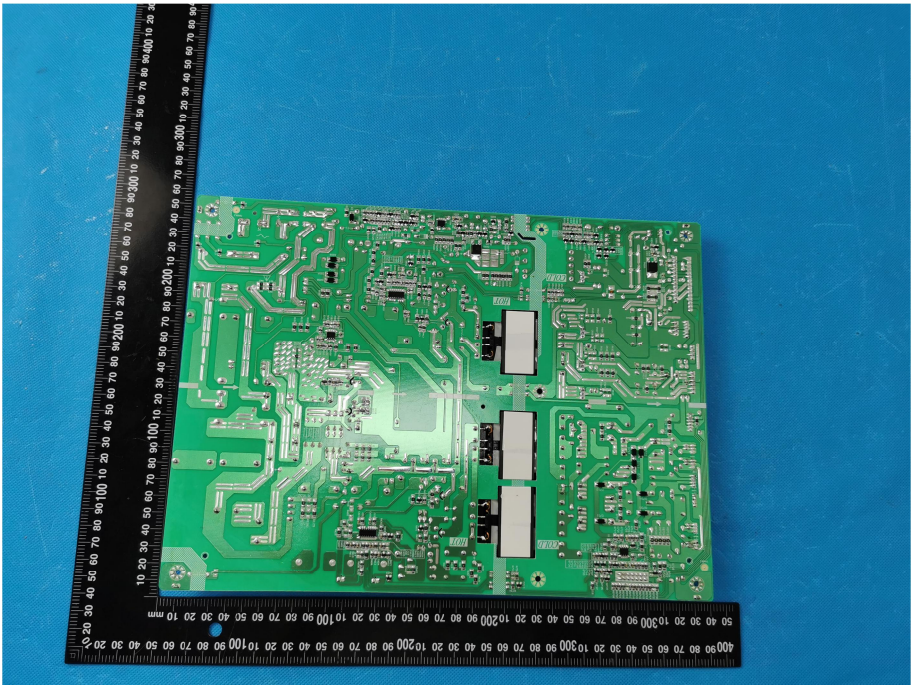
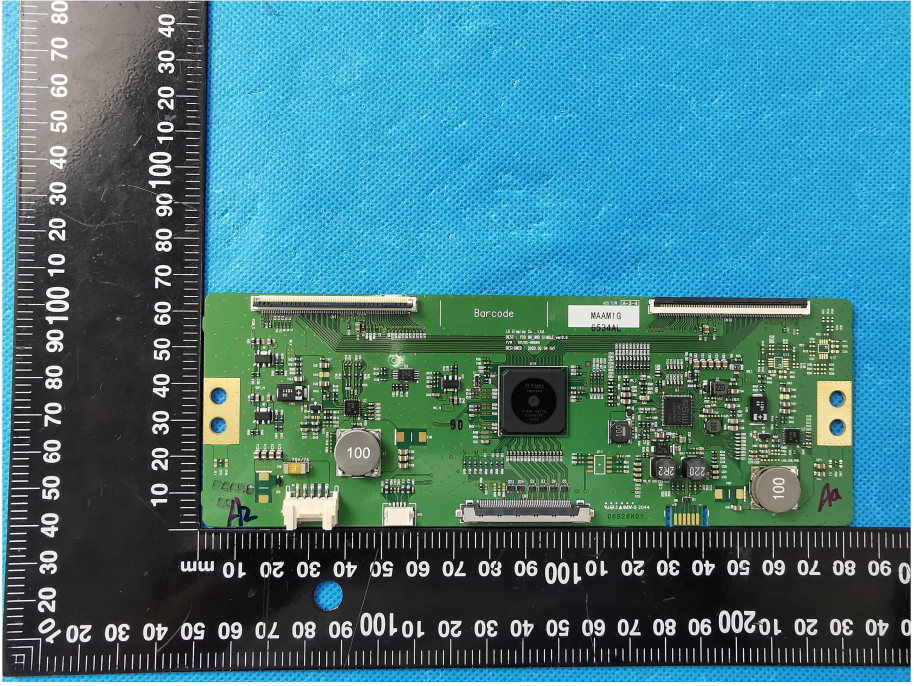


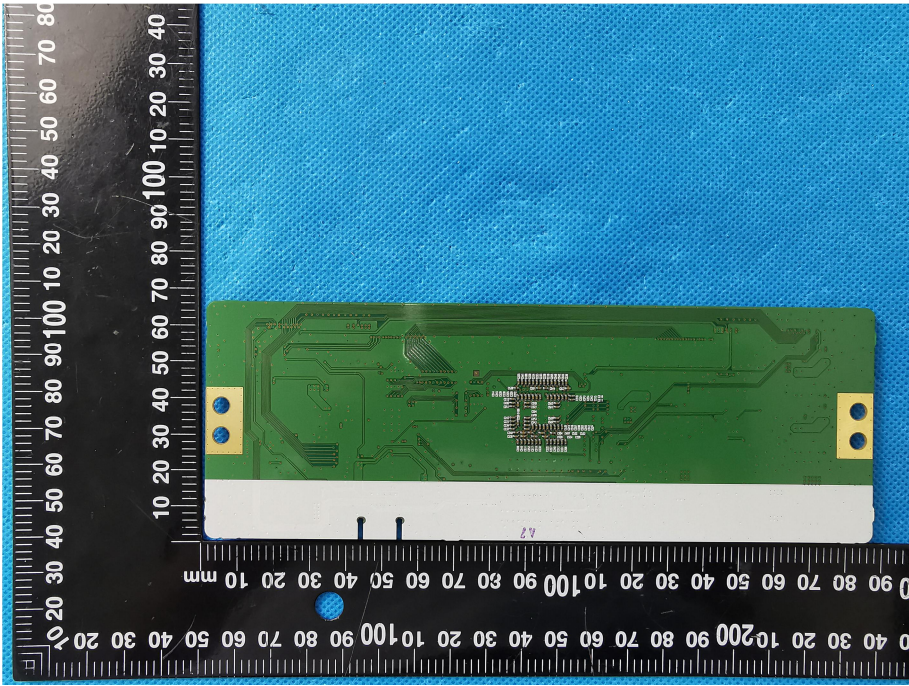
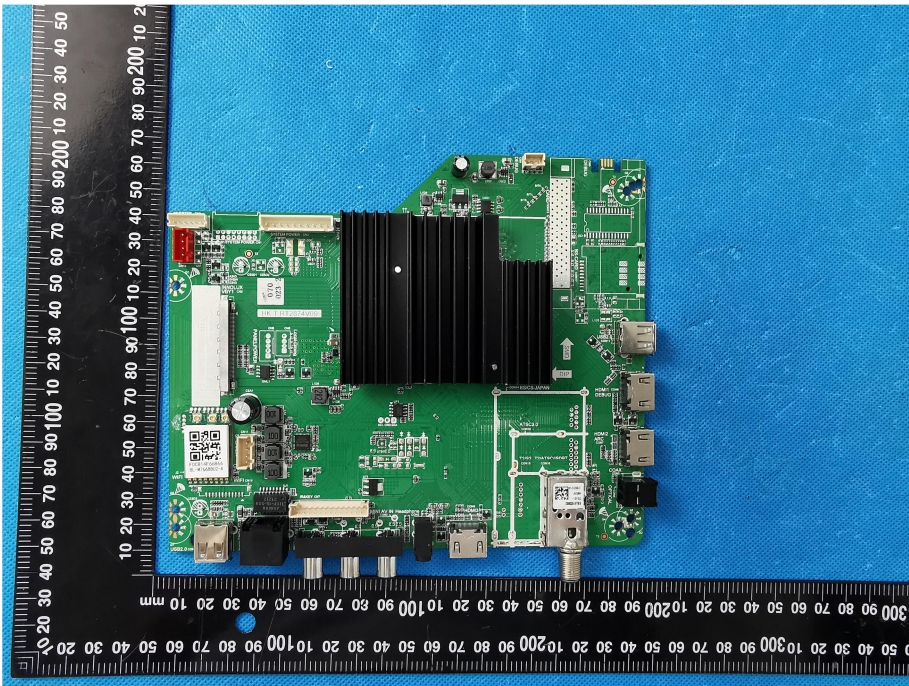
**Solder  
Board-Component View  
4**



**Solder  
Board-Component View  
5**





<p style="text-align: center;"><b>Solder Board-Component View 6</b></p>	 A photograph of a green printed circuit board (PCB) component, labeled '6', showing its soldered side. The board is rectangular and features a central integrated circuit (IC) with numerous pins, two gold-plated mounting tabs on the right side, and a white adhesive strip at the bottom. It is placed on a blue textured surface next to a black ruler with white markings for scale.
<p style="text-align: center;"><b>Solder Board-Component View 7</b></p>	 A photograph of a more complex green PCB component, labeled '7', showing its soldered side. This board is populated with various components including a large black heat sink, several integrated circuits, capacitors, and connectors. It is placed on a blue textured surface next to a black ruler with white markings for scale.