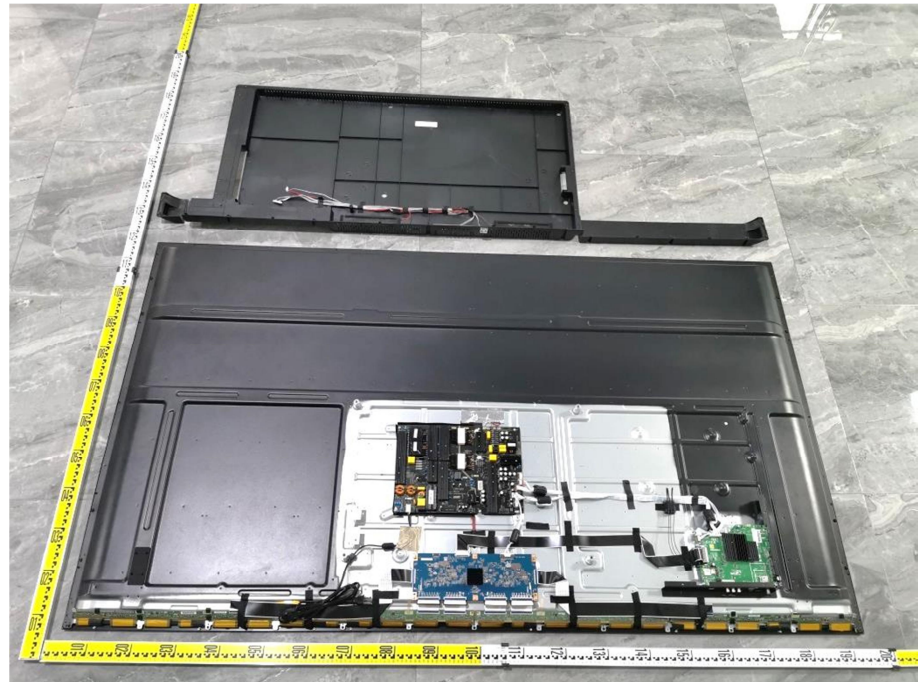
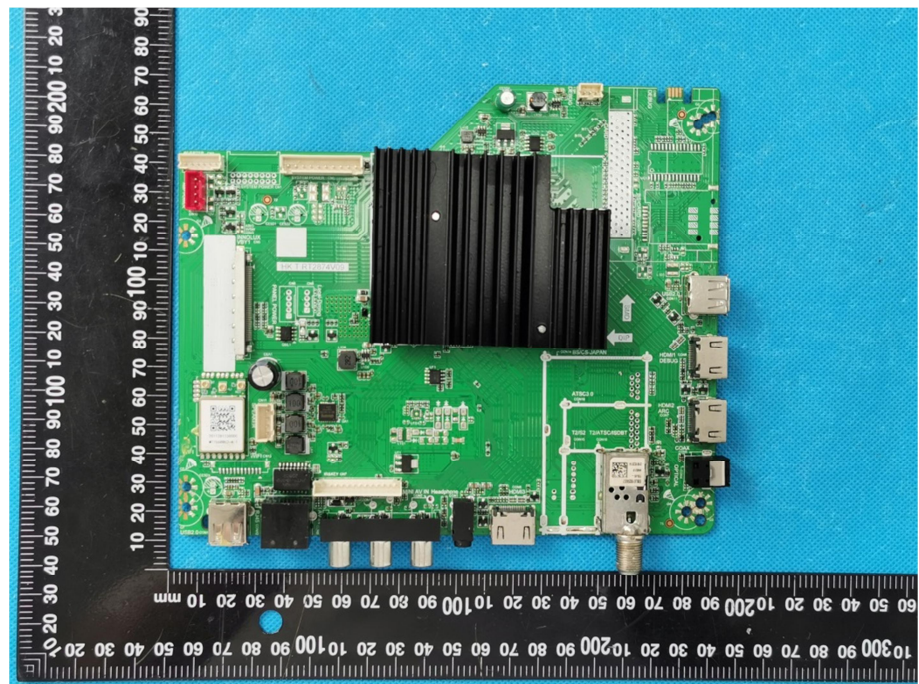


### EXHIBIT 3 - EUT INTERNAL PHOTOGRAPHS

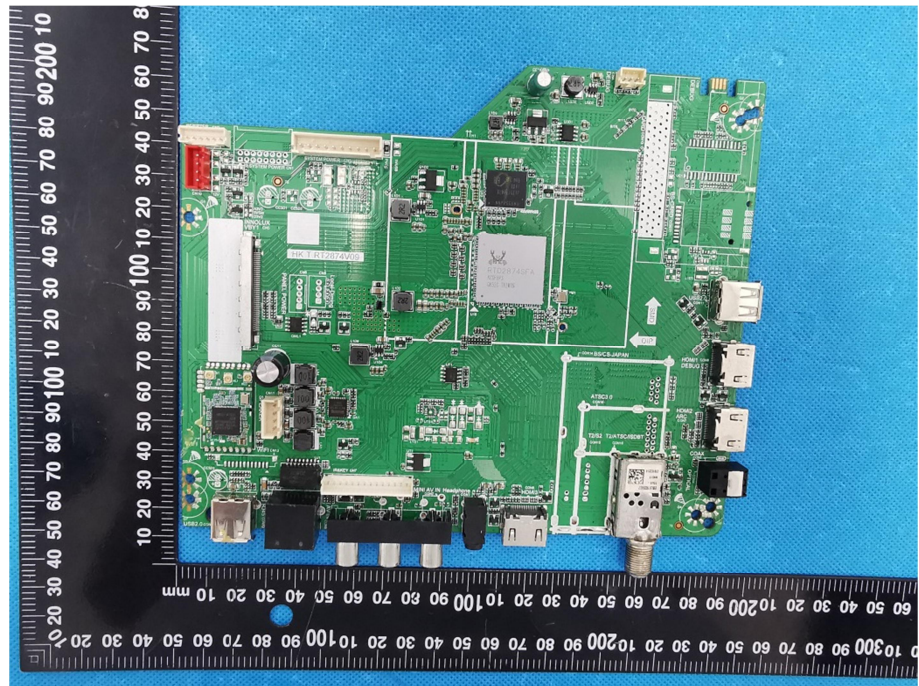
**EUT Housing and Board  
View 1**



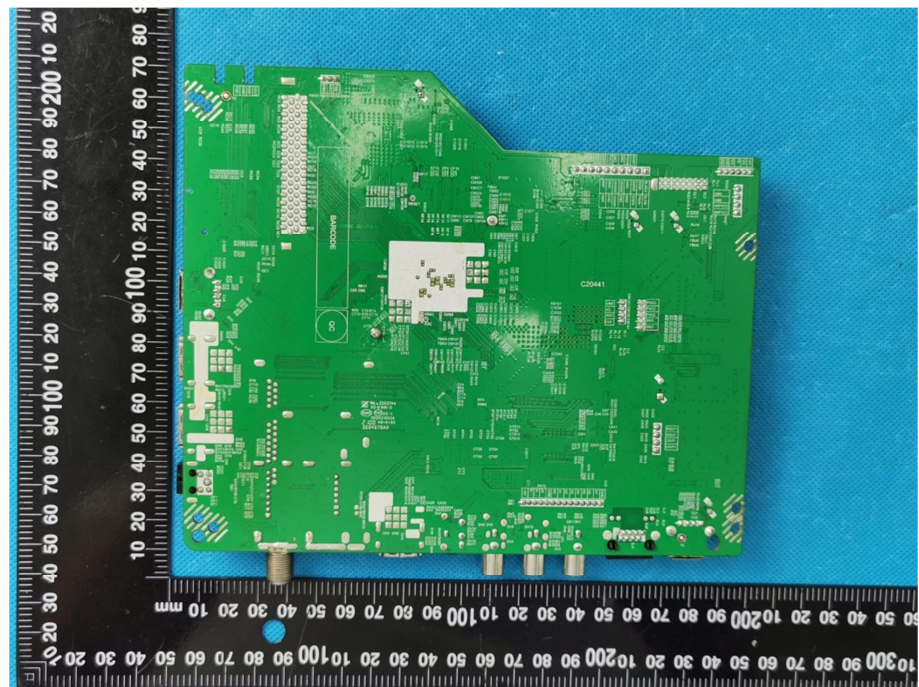
**Solder  
Board-Component View  
1**



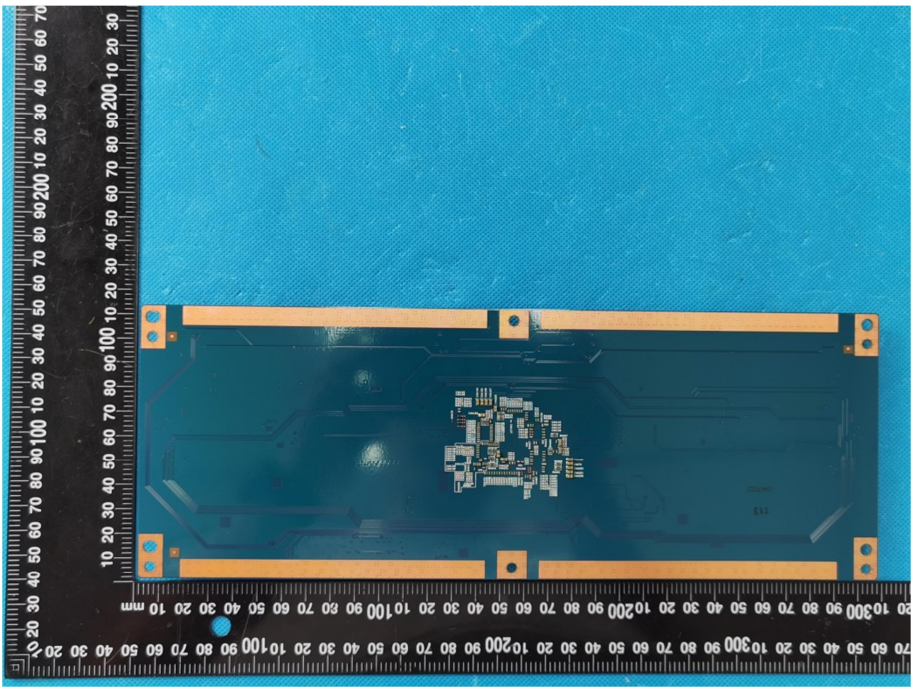
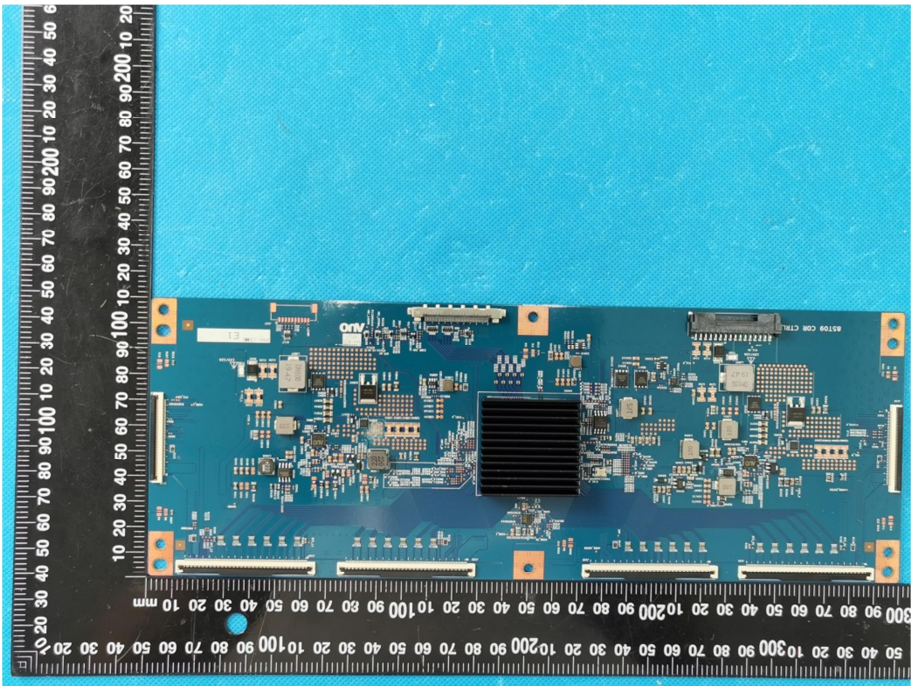
**Solder  
Board-Component View  
2**



**Solder  
Board-Component View  
3**





<p style="text-align: center;"><b>Solder Board-Component View 4</b></p>	 <p>A photograph of a blue printed circuit board (PCB) with a central component. The board is placed on a black ruler with white markings in millimeters. The ruler is oriented vertically on the left side of the board, showing measurements from 0 to 100 mm. The board has four orange circular pads at the corners. The central component is a small, rectangular, multi-pin connector or chip.</p>
<p style="text-align: center;"><b>Solder Board-Component View 5</b></p>	 <p>A photograph of a blue printed circuit board (PCB) with various components. The board is placed on a black ruler with white markings in millimeters. The ruler is oriented vertically on the left side of the board, showing measurements from 0 to 100 mm. The board has four orange circular pads at the corners. The components include a large black heat sink in the center, several integrated circuits, and various passive components. The text 'Orly' is visible on the board.</p>