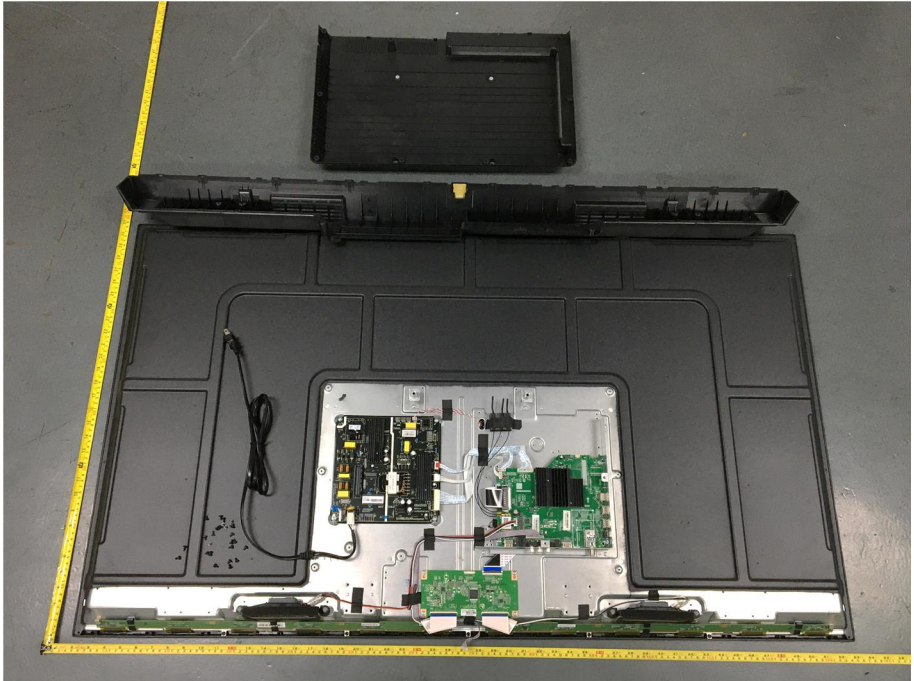
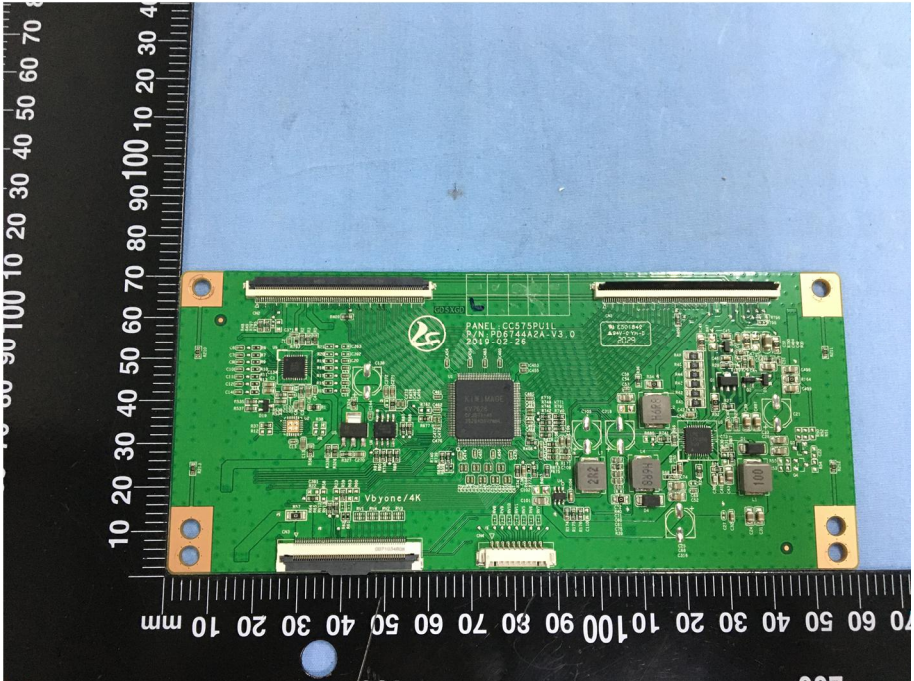
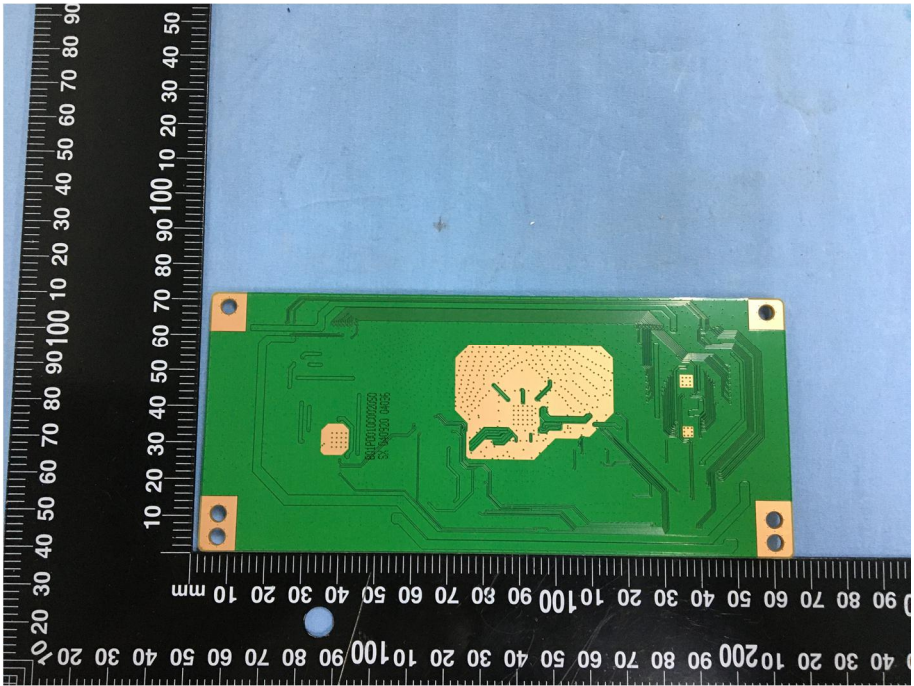
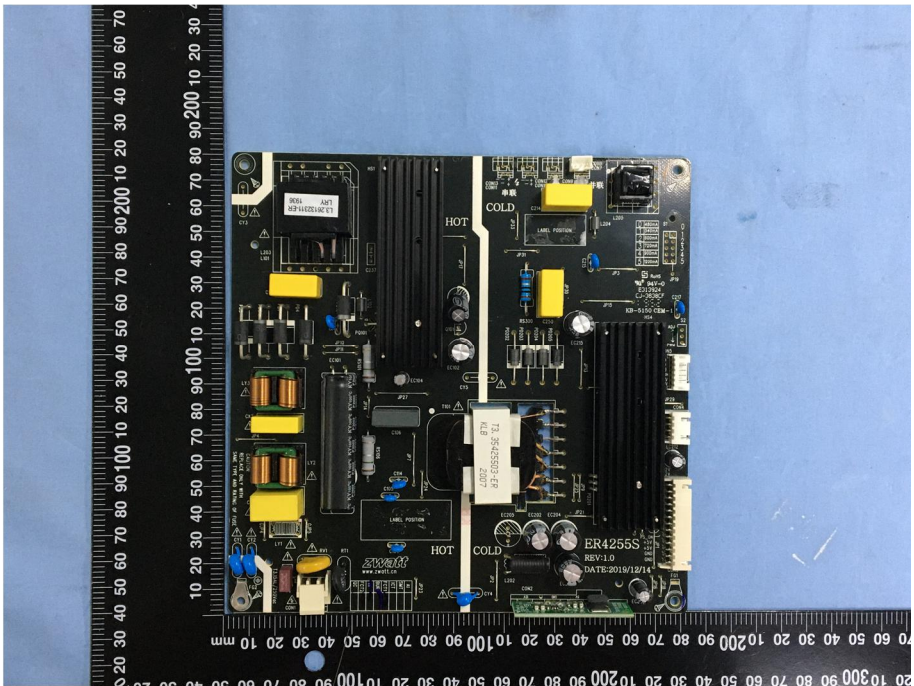
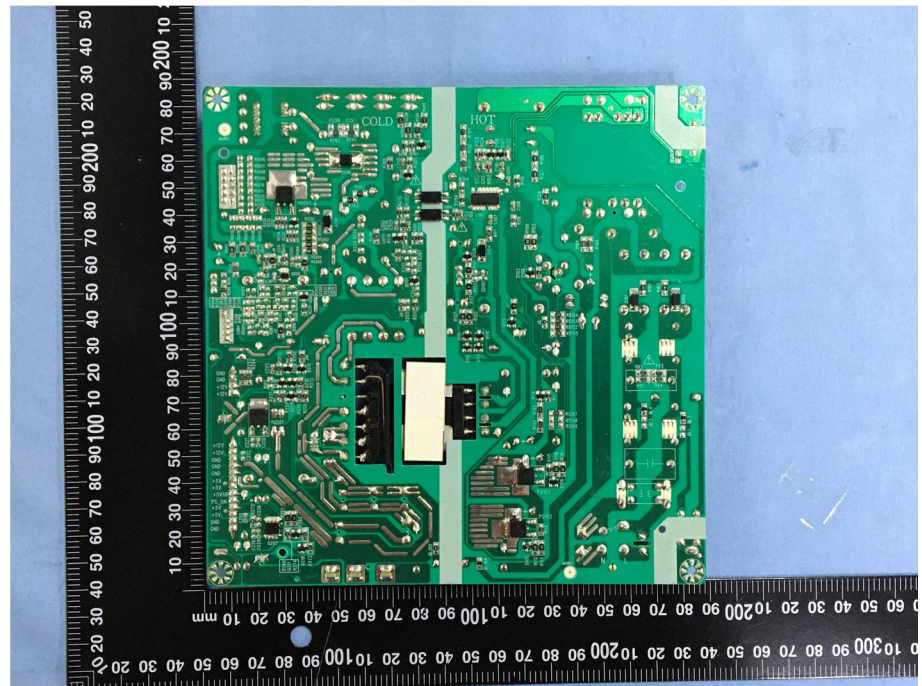


EXHIBIT 3 - EUT INTERNAL PHOTOGRAPHS

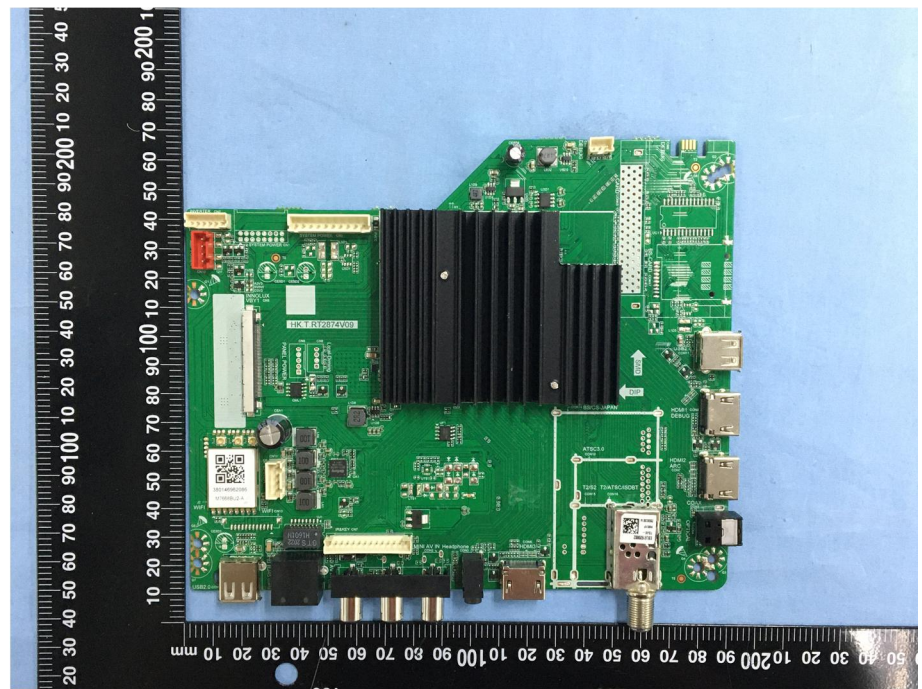
<p>EUT Housing and Board View 1</p>	 A photograph showing the internal components of an EUT (Electromagnetic Interference Test) housing. The housing is black and rectangular. The internal board is green and populated with various electronic components, including a large central chip, several smaller chips, and connectors. A yellow measuring tape is visible along the left and bottom edges of the housing, indicating its dimensions.
<p>Solder Board-Component View 1</p>	 A close-up photograph of the solder board component. The board is green and populated with various electronic components, including a large central chip, several smaller chips, and connectors. A black ruler with white markings is visible on the left and bottom edges of the board, indicating its dimensions. The board is placed on a blue surface.

<p style="text-align: center;">Solder Board-Component View 2</p>	 <p>A photograph of a green printed circuit board (PCB) component. The board is rectangular and features a central gold-colored pad with a complex pattern of traces. There are four orange circular pads at the corners. The board is placed on a black ruler with white markings in millimeters. The ruler shows measurements from 0 to 100 mm on both the horizontal and vertical axes.</p>
<p style="text-align: center;">Solder Board-Component View 3</p>	 <p>A photograph of a black printed circuit board (PCB) component. The board is populated with various electronic components, including capacitors, resistors, and integrated circuits. There are labels for "HOT" and "COLD" sections. A white label in the center reads "ER4255S REV-1.0 DATE:2019/12/14". The board is placed on a black ruler with white markings in millimeters. The ruler shows measurements from 0 to 100 mm on both the horizontal and vertical axes.</p>

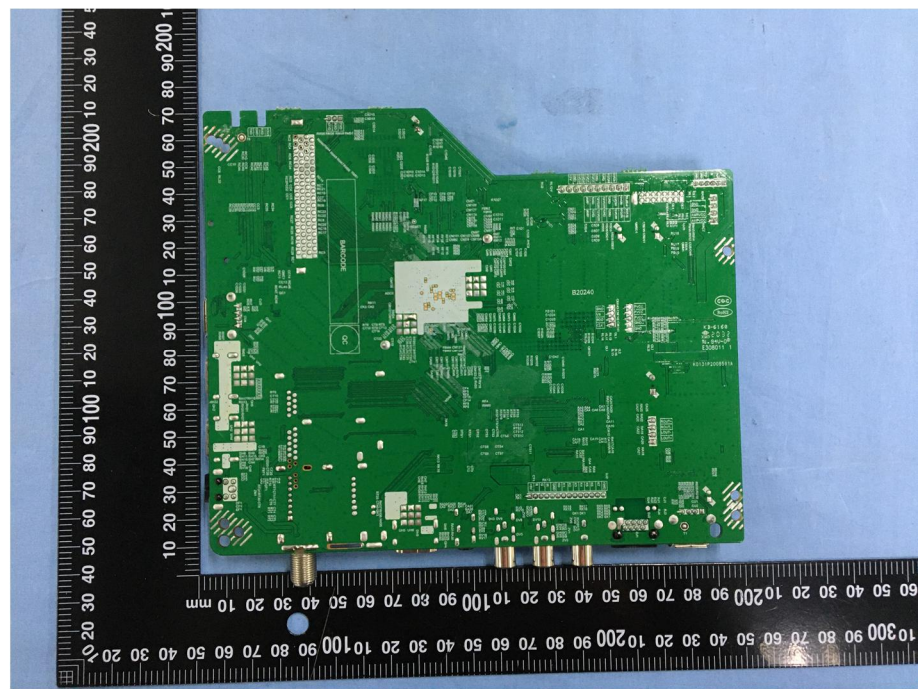
**Solder
Board-Component View
4**



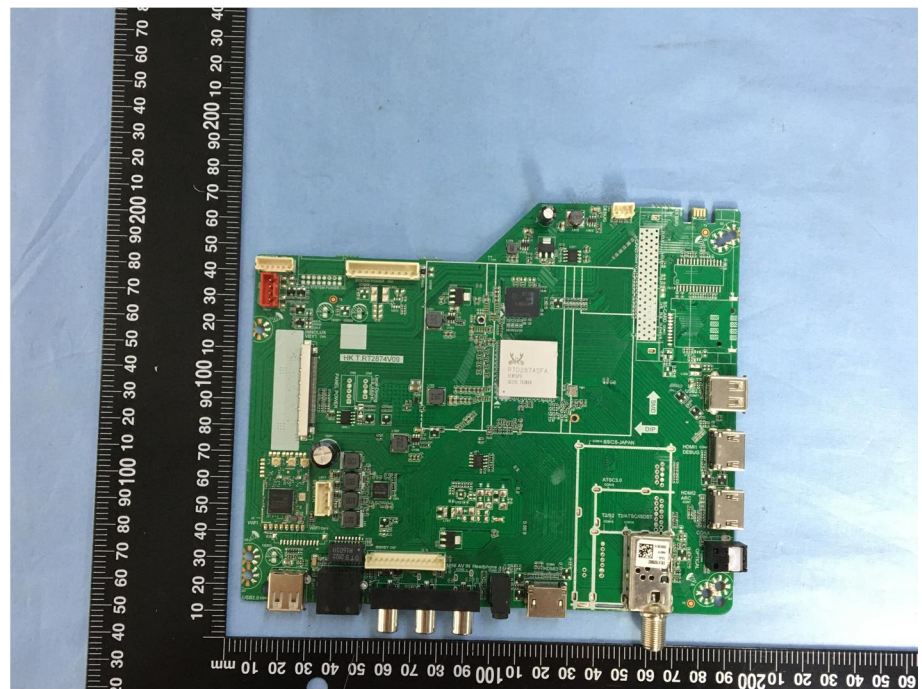
**Solder
Board-Component View
5**

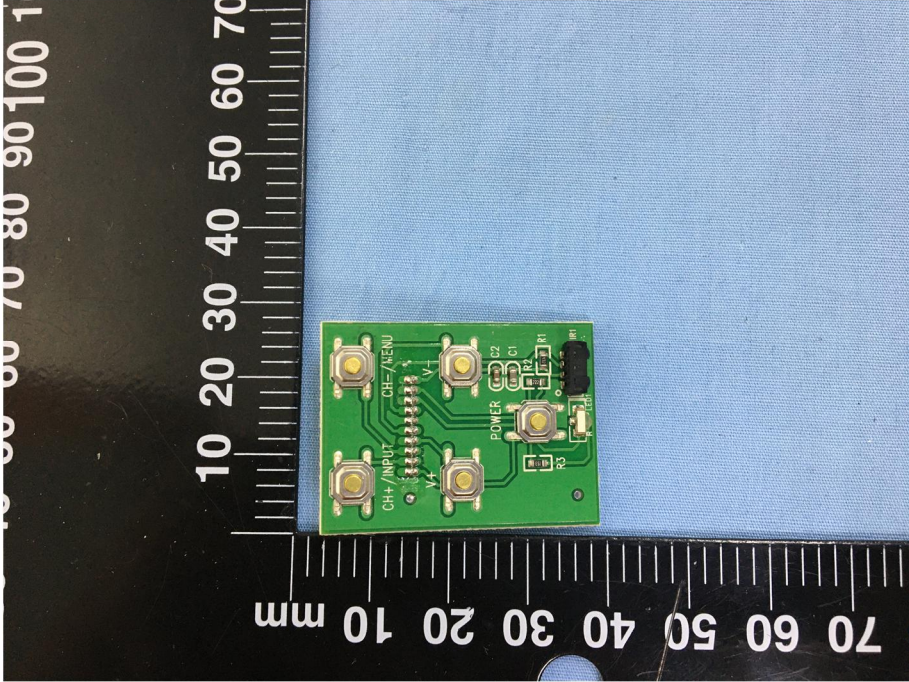
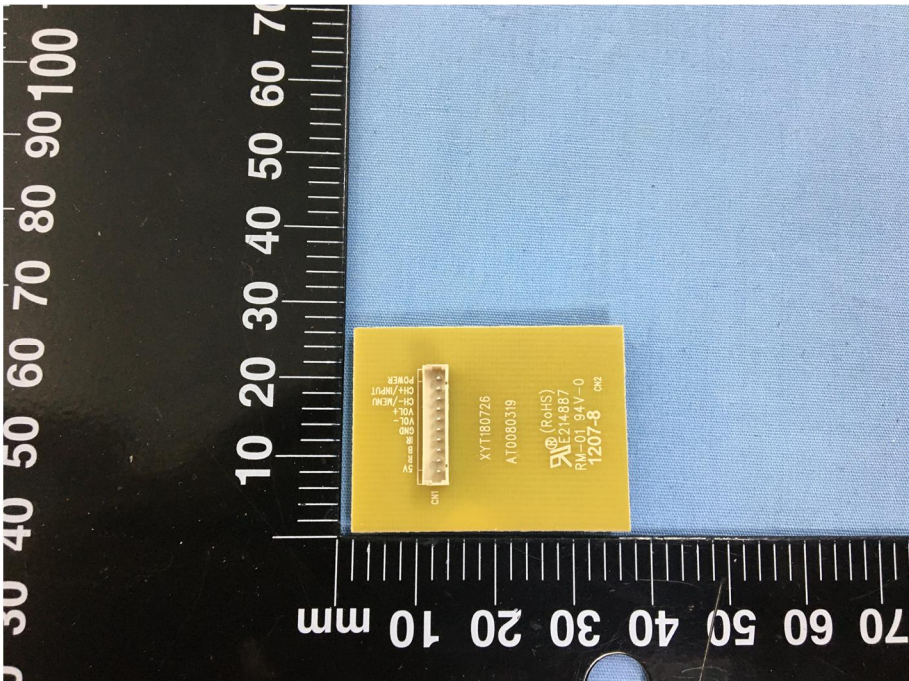


**Solder
Board-Component View
6**



**Solder
Board-Component View
7**



<p style="text-align: center;">Solder Board-Component View 8</p>	 <p>A photograph of a green printed circuit board (PCB) component. The board is rectangular and features several gold-plated circular pads. Labels on the board include 'CH+/INPUT', 'CH-/MENU', 'POWER', 'R1', 'R2', 'R3', and 'R4'. The component is placed on a black surface with a white ruler for scale. The ruler shows markings from 0 to 100 mm, with the component positioned between the 10 mm and 70 mm marks.</p>
<p style="text-align: center;">Solder Board-Component View 9</p>	 <p>A photograph of a yellow PCB component. The board is rectangular and has a gold-plated edge connector. Labels on the board include 'CH+', 'CH-/MENU', 'POWER', 'V+', 'V-', 'R1', 'R2', 'R3', 'R4', 'R5', 'R6', 'R7', 'R8', 'R9', 'R10', 'R11', 'R12', 'R13', 'R14', 'R15', 'R16', 'R17', 'R18', 'R19', 'R20', 'R21', 'R22', 'R23', 'R24', 'R25', 'R26', 'R27', 'R28', 'R29', 'R30', 'R31', 'R32', 'R33', 'R34', 'R35', 'R36', 'R37', 'R38', 'R39', 'R40', 'R41', 'R42', 'R43', 'R44', 'R45', 'R46', 'R47', 'R48', 'R49', 'R50', 'R51', 'R52', 'R53', 'R54', 'R55', 'R56', 'R57', 'R58', 'R59', 'R60', 'R61', 'R62', 'R63', 'R64', 'R65', 'R66', 'R67', 'R68', 'R69', 'R70', 'R71', 'R72', 'R73', 'R74', 'R75', 'R76', 'R77', 'R78', 'R79', 'R80', 'R81', 'R82', 'R83', 'R84', 'R85', 'R86', 'R87', 'R88', 'R89', 'R90', 'R91', 'R92', 'R93', 'R94', 'R95', 'R96', 'R97', 'R98', 'R99', 'R100'. The component is placed on a black surface with a white ruler for scale. The ruler shows markings from 0 to 100 mm, with the component positioned between the 10 mm and 70 mm marks.</p>

Antenna View

