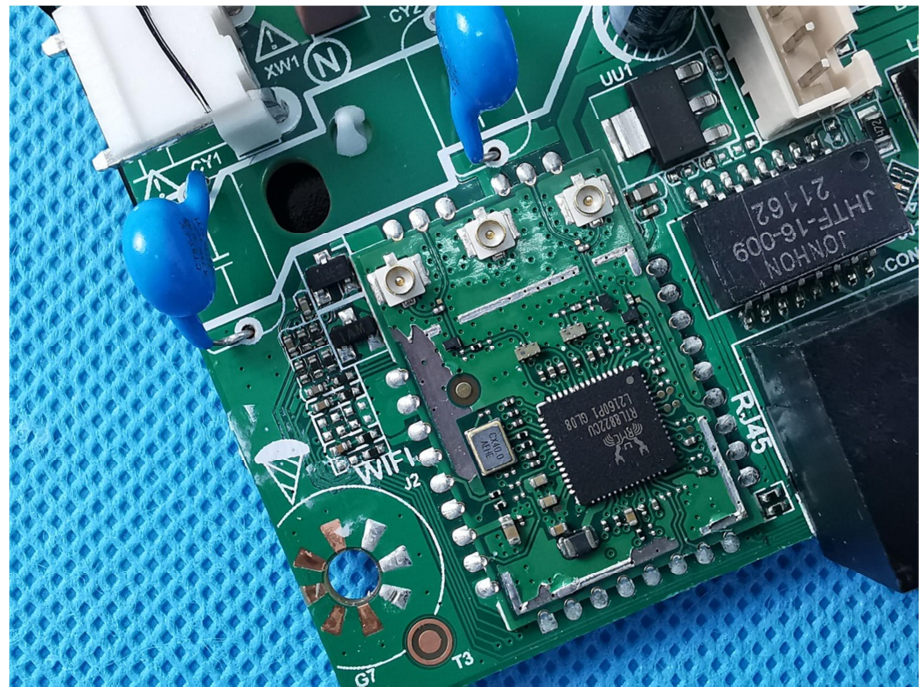
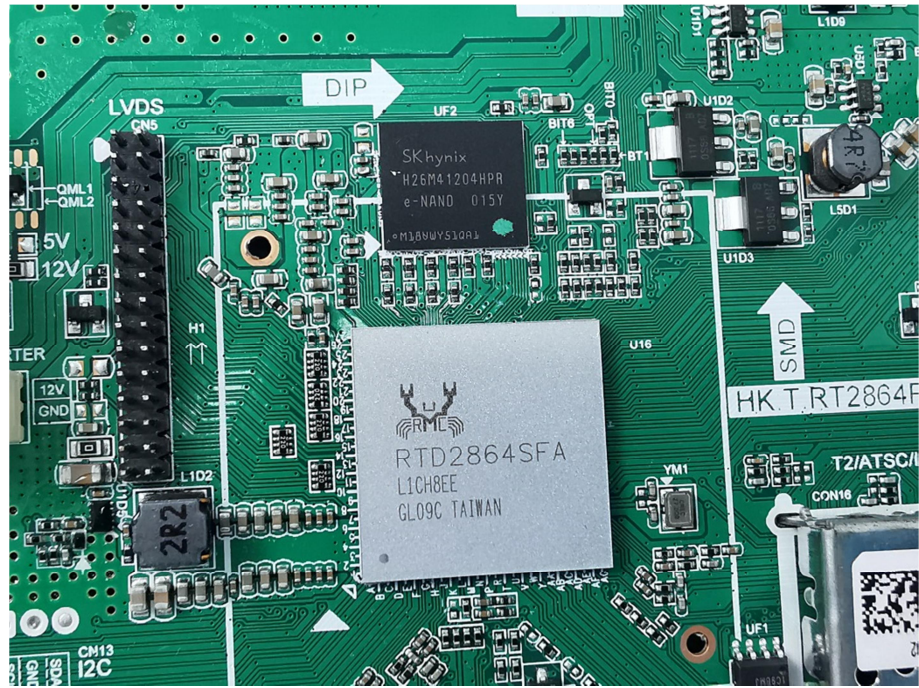
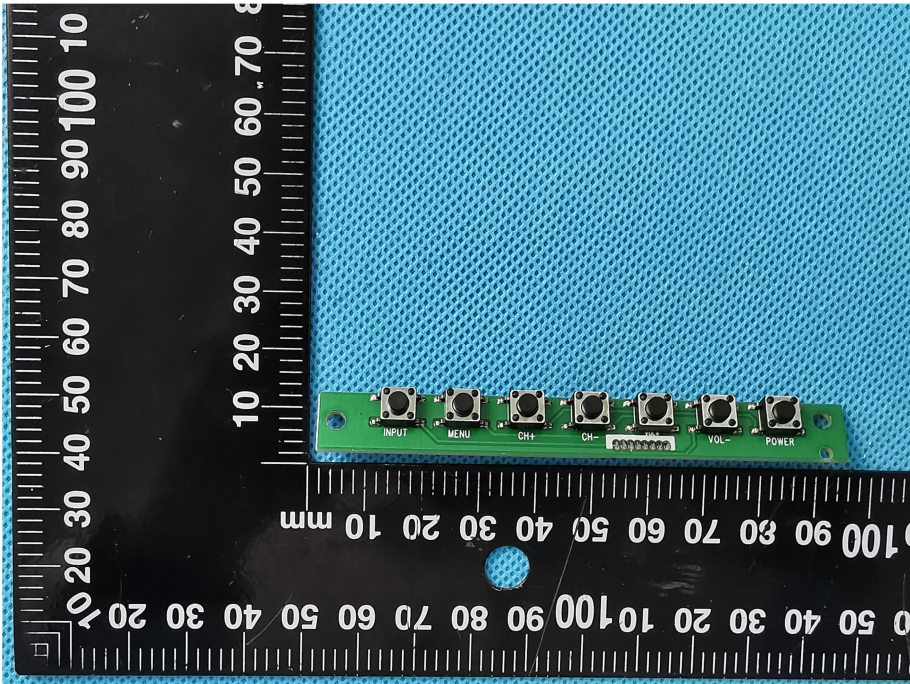
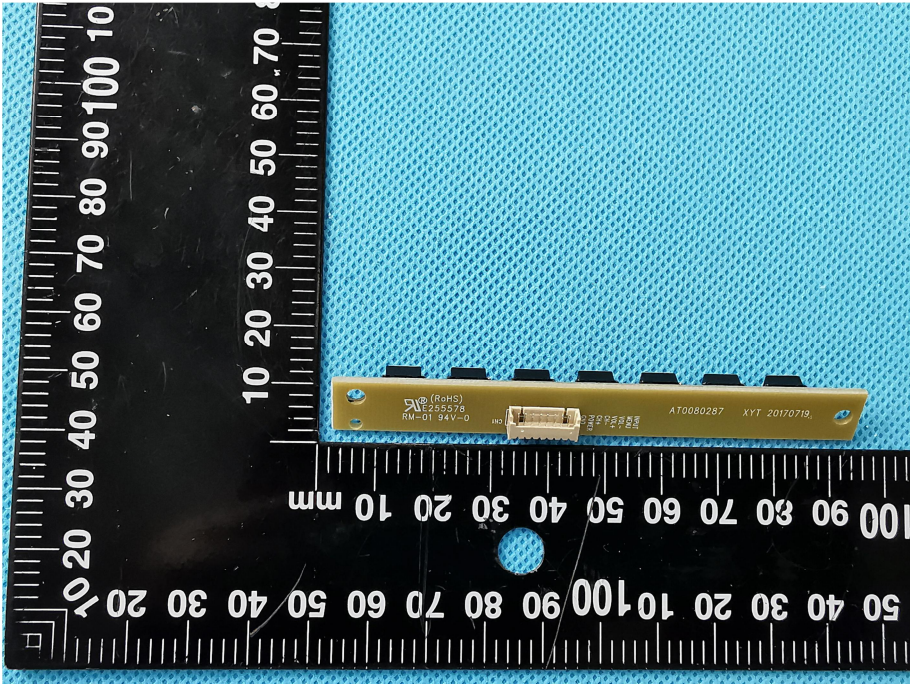


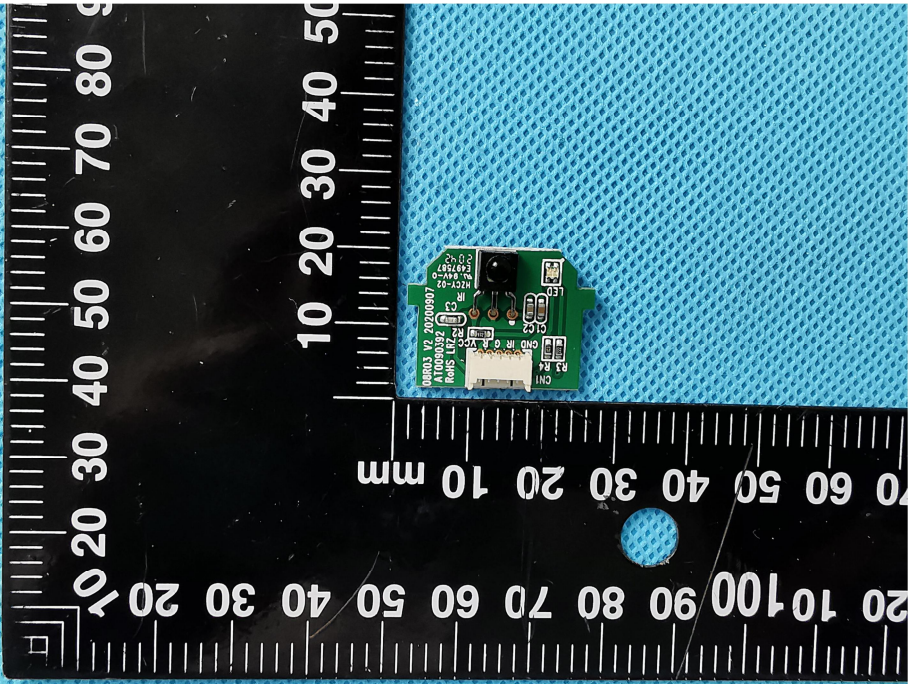
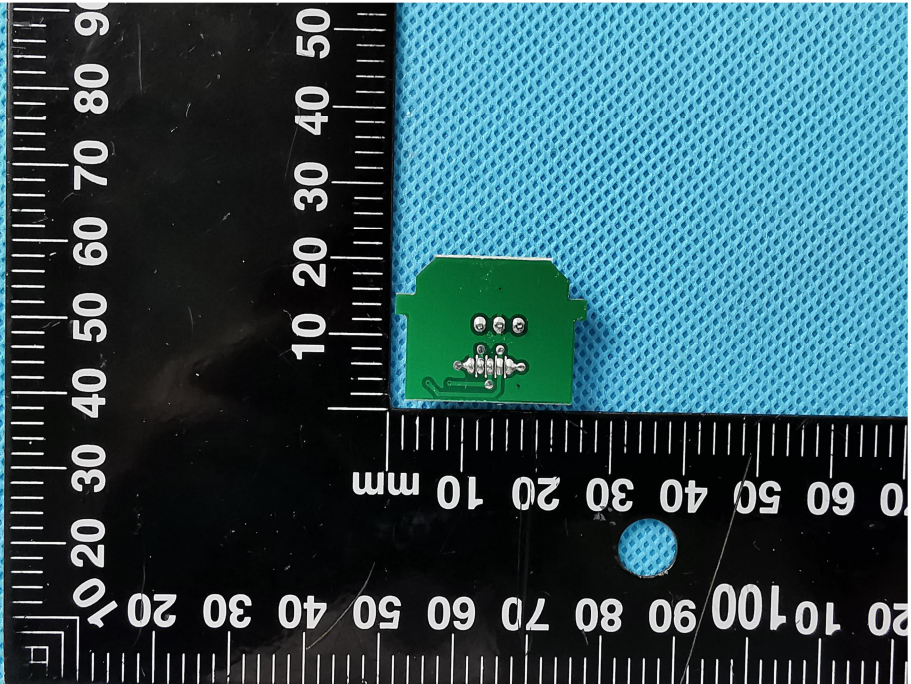
Solder
Board-Component View
4



Solder
Board-Component View
5



<p style="text-align: center;">Solder Board-Component View 6</p>	 <p>A photograph of a green printed circuit board (PCB) component with six circular buttons. The buttons are labeled from left to right: INPUT, MENU, CH-, CH+, VOL-, and POWER. The component is placed on a black ruler with white markings in millimeters. The ruler shows the component is approximately 100 mm long. The background is a blue textured surface.</p>
<p style="text-align: center;">Solder Board-Component View 7</p>	 <p>A photograph of a gold-colored PCB component with a connector. The component has several black components on top. It is placed on a black ruler with white markings in millimeters. The ruler shows the component is approximately 100 mm long. The background is a blue textured surface. Text on the component includes: (RoHS), E265576, RM-01 94V-0, AT0080287, and XYT 20170719.</p>

<p style="text-align: center;">Solder Board-Component View 8</p>	 <p>A photograph showing a small green printed circuit board (PCB) component mounted on a blue textured surface. The component is rectangular and features several surface-mounted components, including a microcontroller, resistors, and capacitors. A black ruler with white markings is placed below the component for scale, showing measurements in millimeters. The ruler is oriented vertically, with the 0 mark at the top and the 100 mm mark at the bottom. The component is positioned between the 10 mm and 50 mm marks on the ruler.</p>
<p style="text-align: center;">Solder Board-Component View 9</p>	 <p>A photograph showing the same small green PCB component from a different perspective. The component is mounted on the blue textured surface. A black ruler with white markings is placed below the component for scale, showing measurements in millimeters. The ruler is oriented vertically, with the 0 mark at the top and the 100 mm mark at the bottom. The component is positioned between the 10 mm and 50 mm marks on the ruler.</p>

Antenna View

