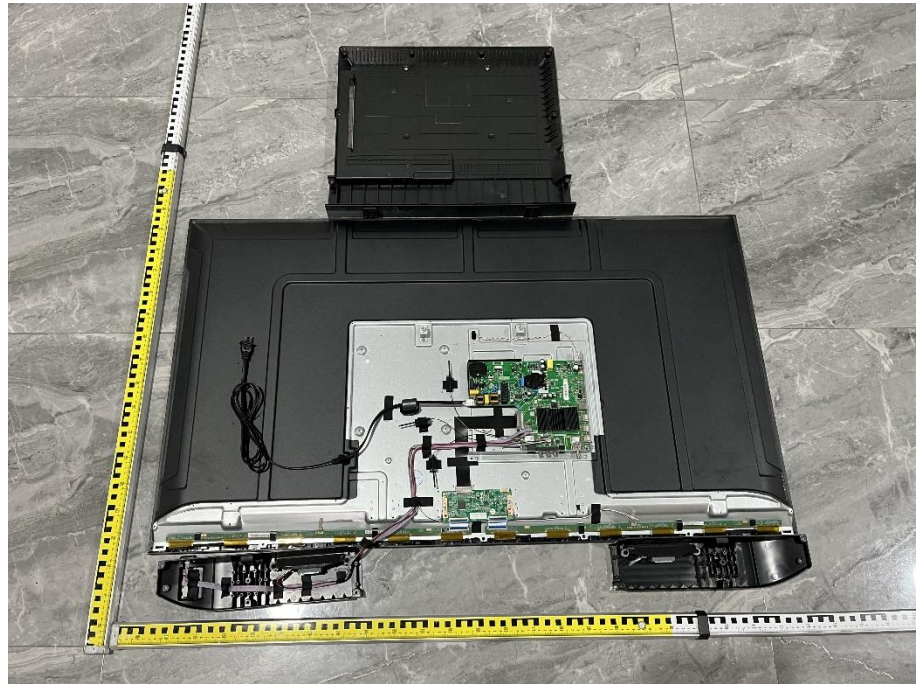
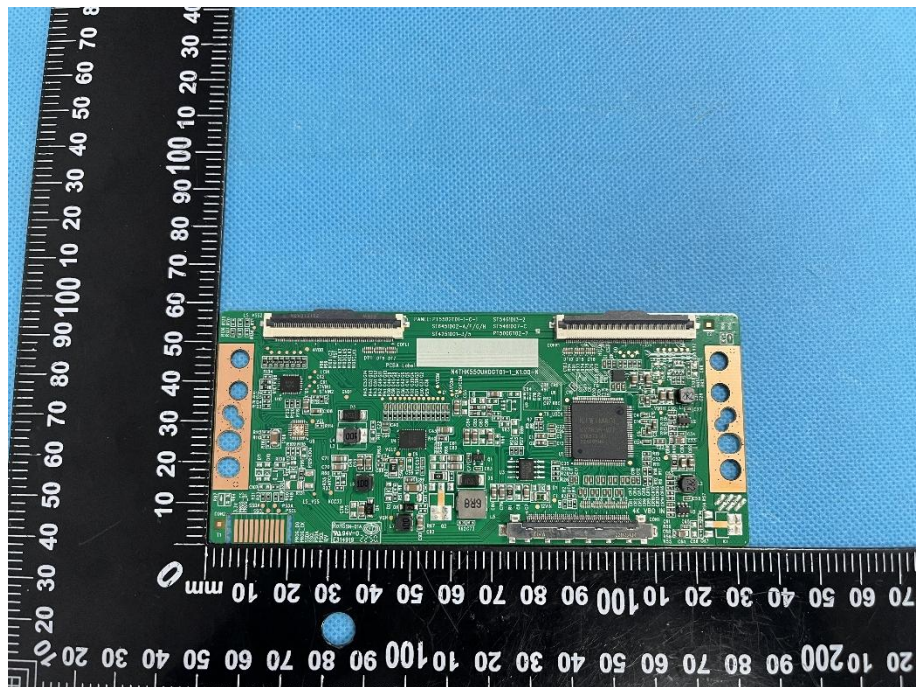


### EXHIBIT 3 - EUT INTERNAL PHOTOGRAPHS

**EUT Housing and Board View 1**

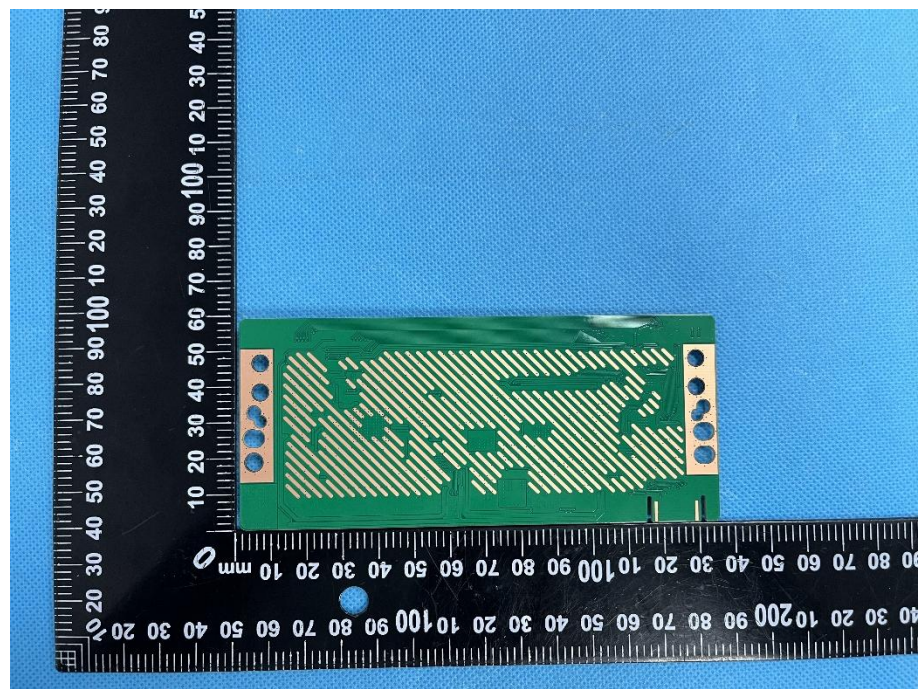


**Solder Board-Component View 1**

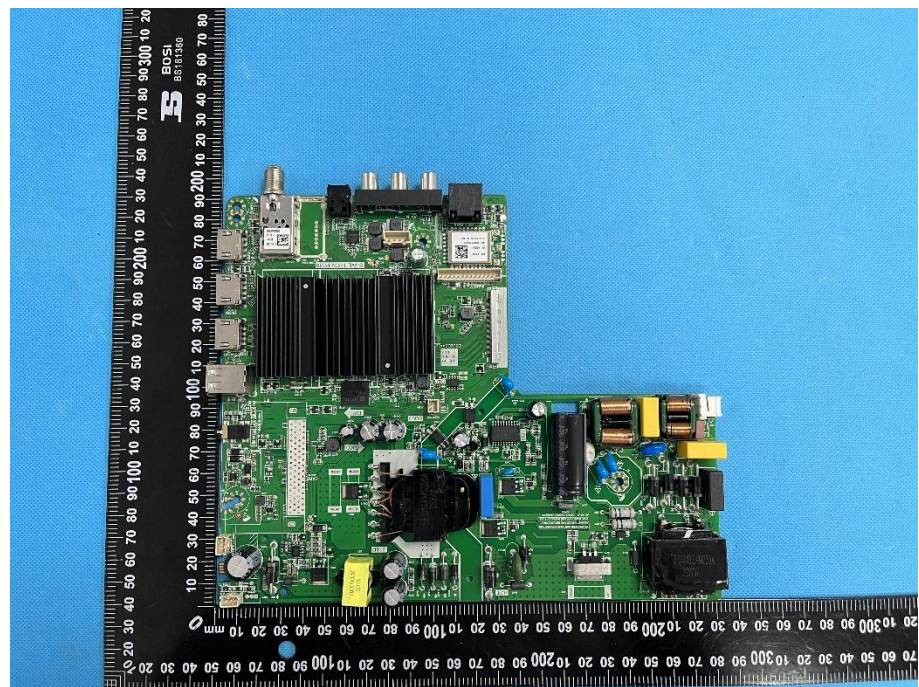




**Solder  
Board-Component  
View 2**

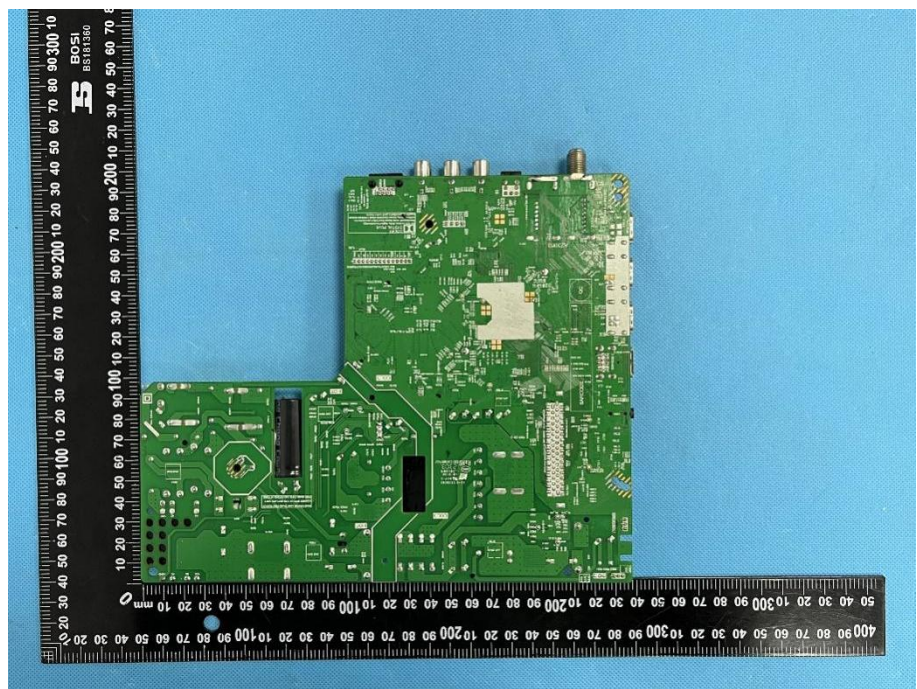


**Solder  
Board-Component  
View 3**

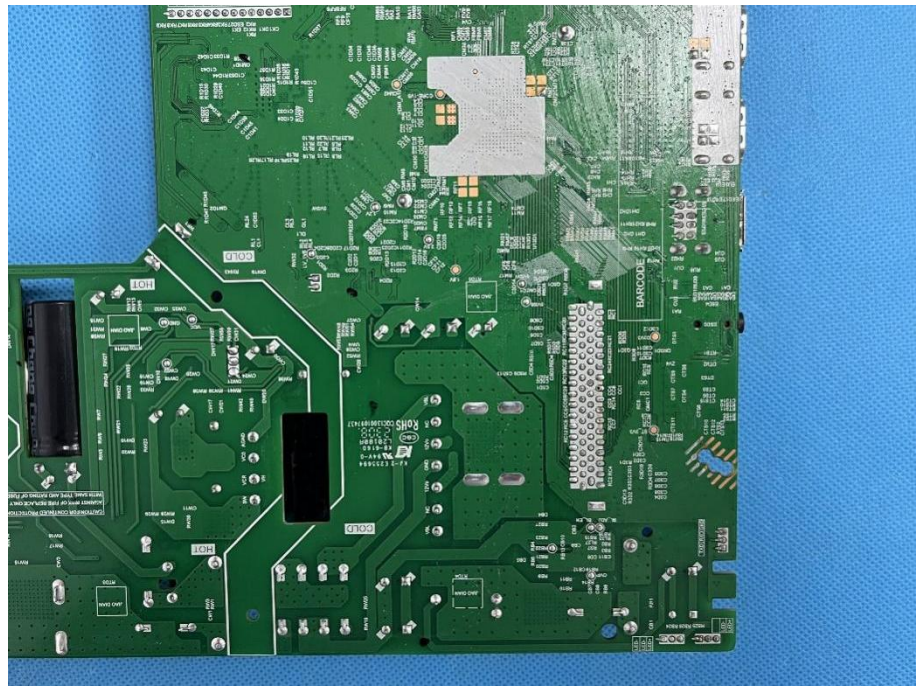




**Solder  
Board-Component  
View 4**

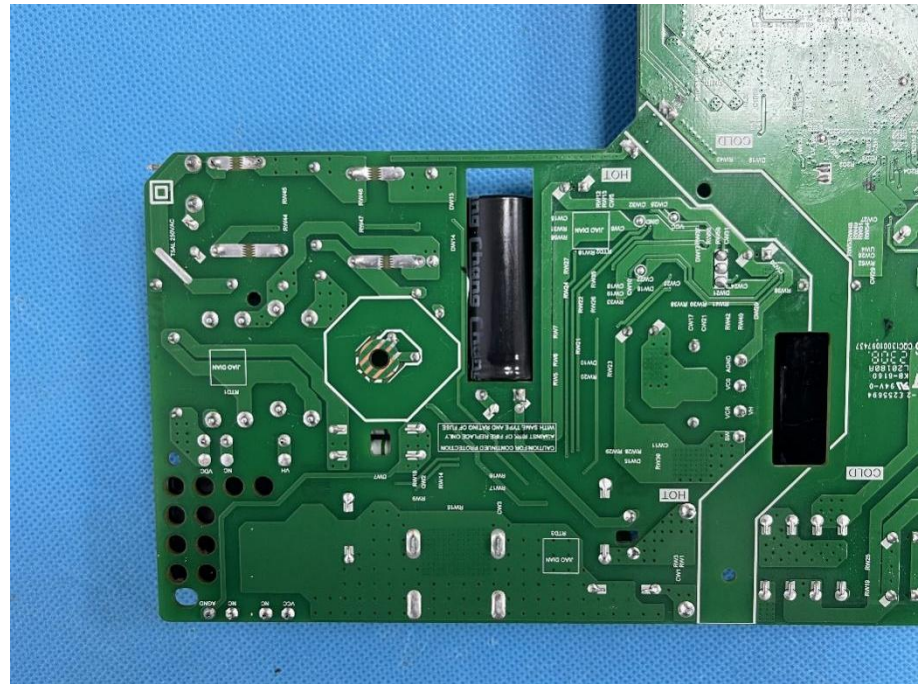


**Solder  
Board-Component  
View 5**

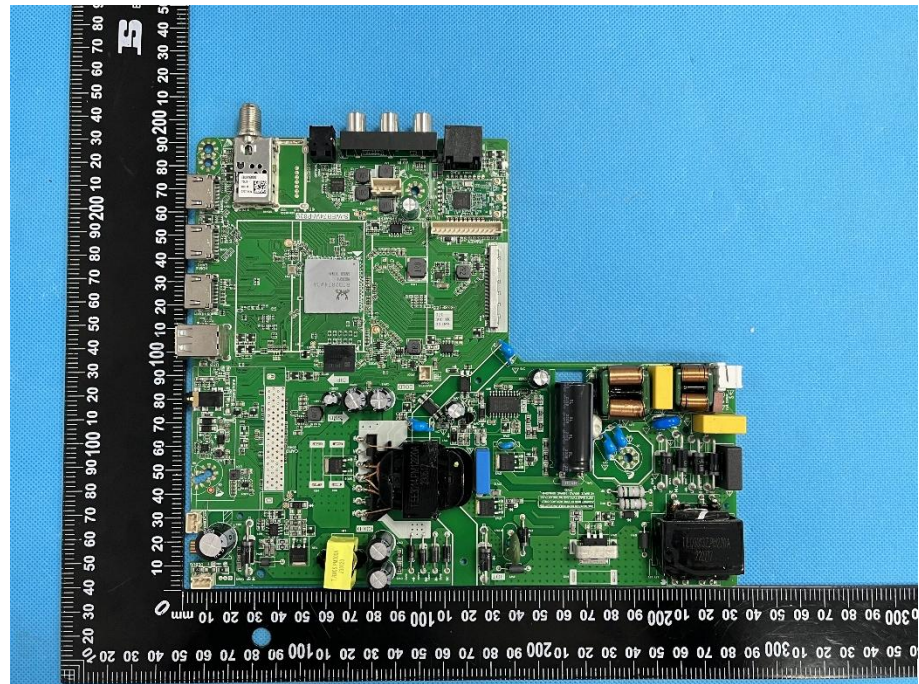




**Solder  
Board-Component  
View 6**

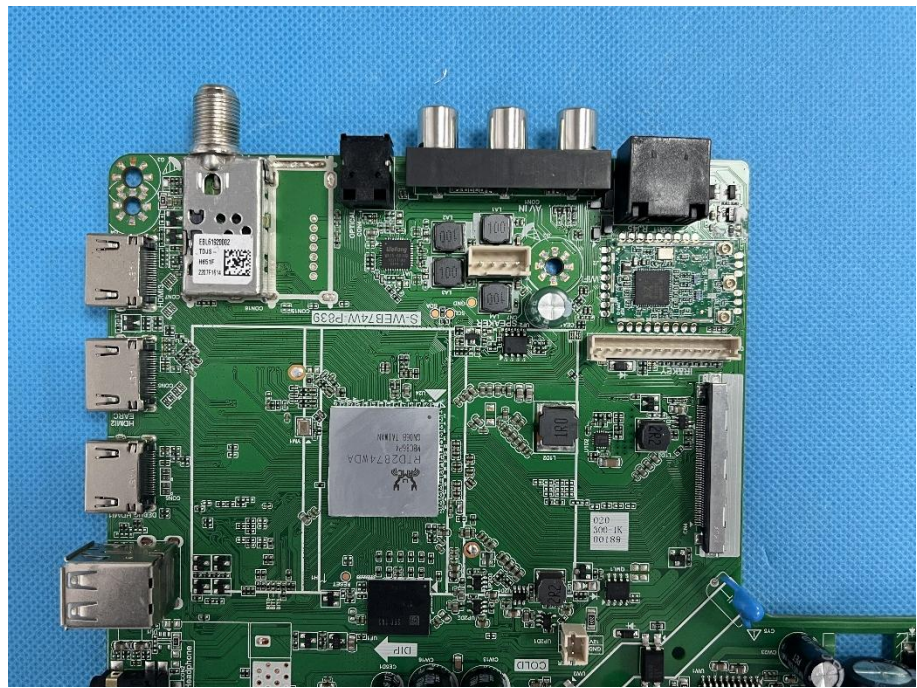


**Solder  
Board-Component  
View 7**

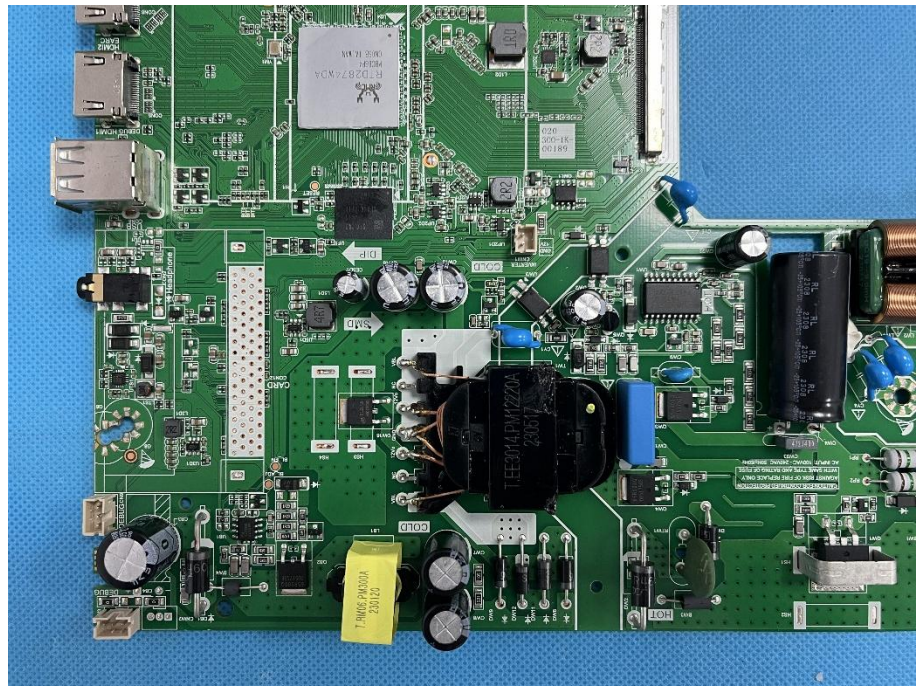




**Solder  
Board-Component  
View 8**

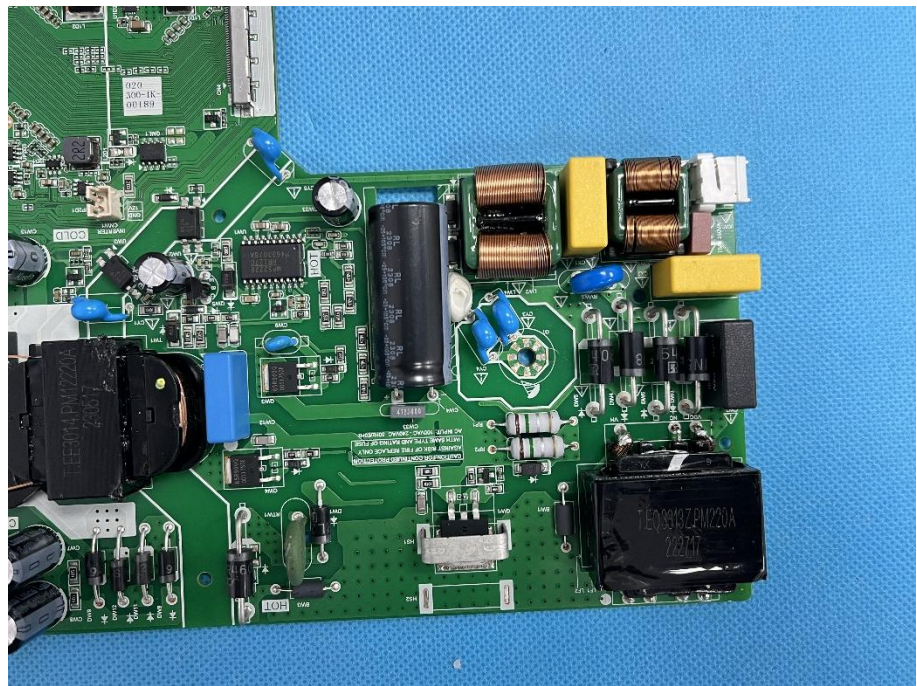


**Solder  
Board-Component  
View 9**

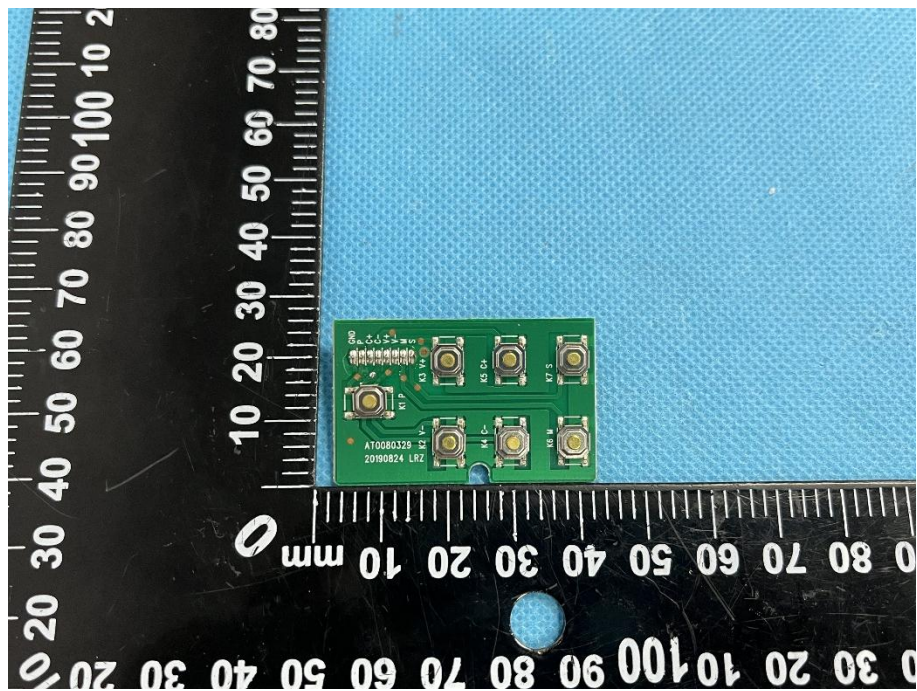


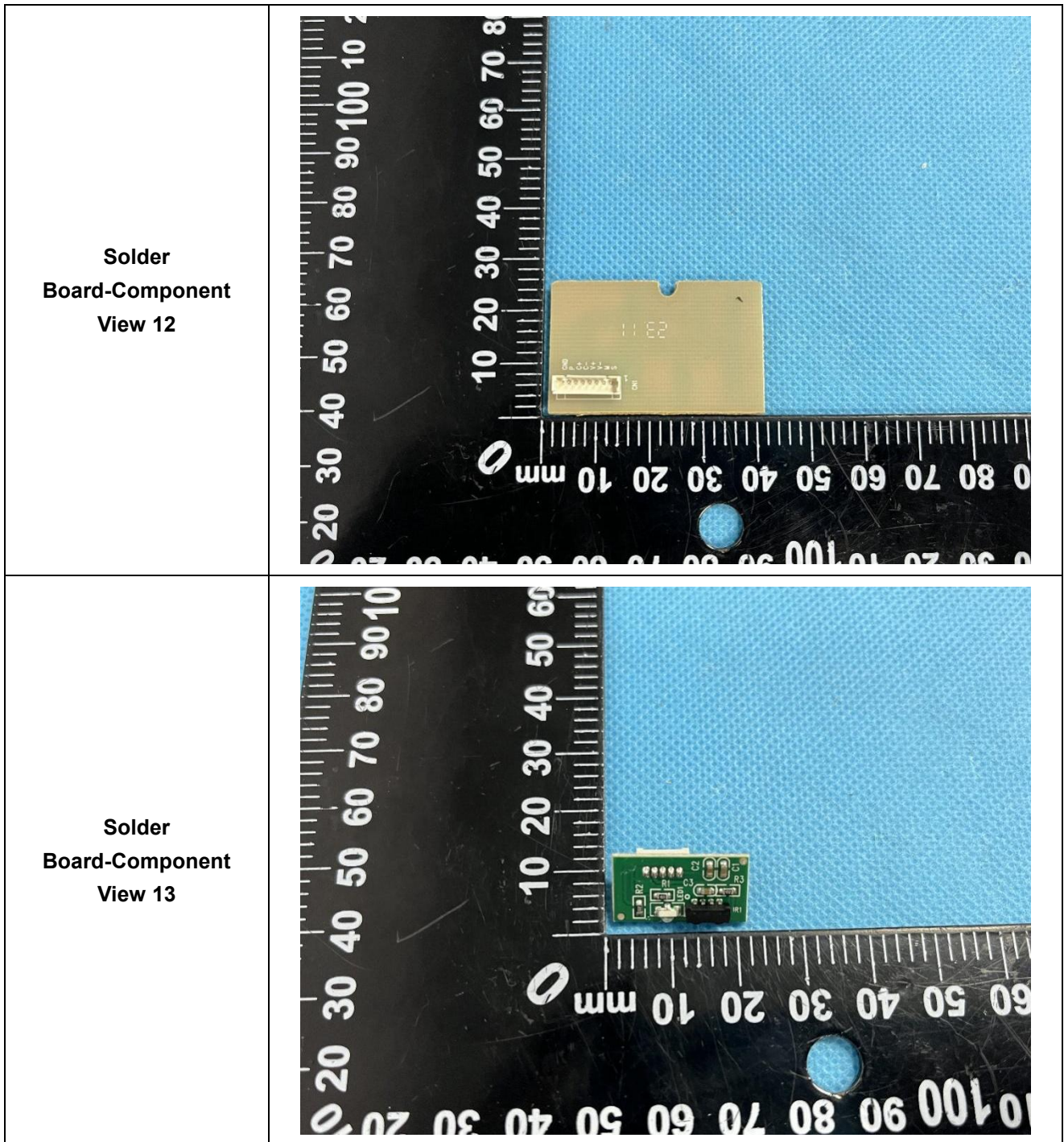


**Solder  
Board-Component  
View 10**

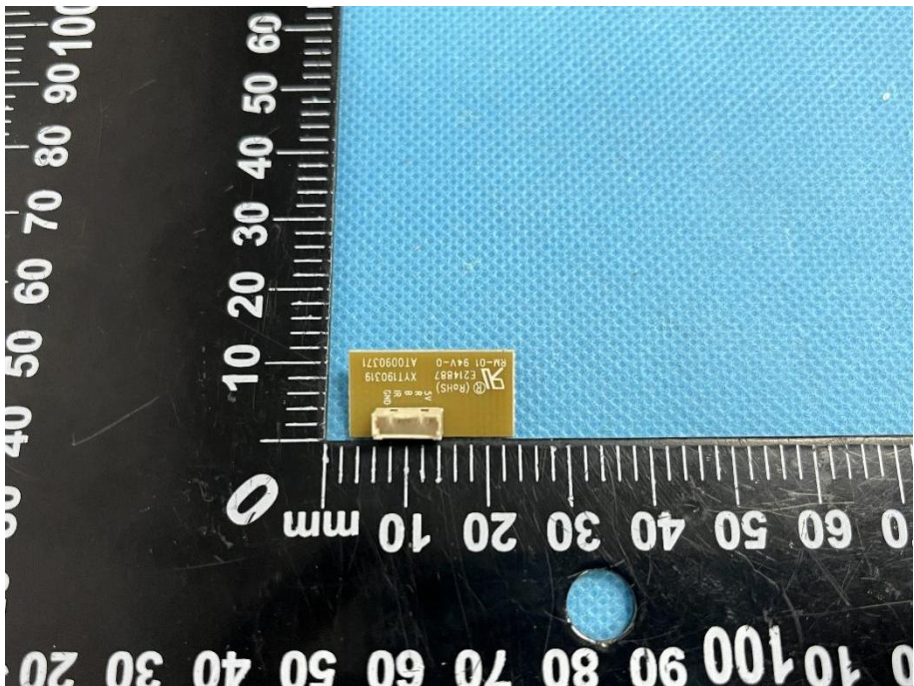
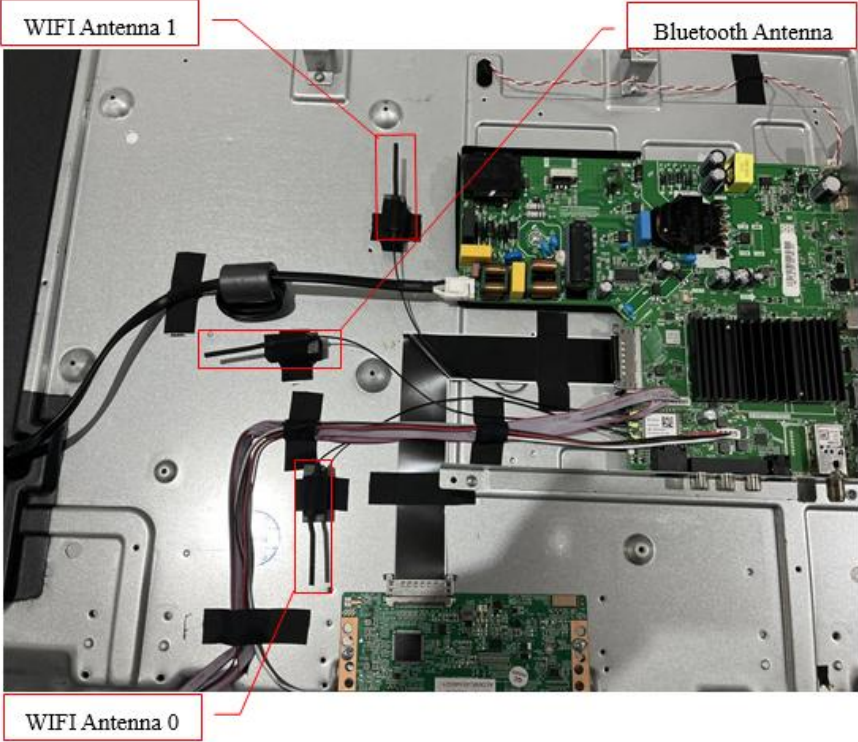


**Solder  
Board-Component  
View 11**







<p><b>Solder Board-Component View 14</b></p>	 <p>A close-up photograph of a yellow component, likely a solder mask or component, on a blue textured surface. A ruler is visible in the background, showing measurements in millimeters. The component has markings: "64-01 84V-0", "6218B7", "X1190319", and "A10090371".</p>
<p><b>Antenna View</b></p>	 <p>A photograph showing the internal antenna connections on a device chassis. Three antennas are labeled: "WIFI Antenna 1" (top left), "Bluetooth Antenna" (top right), and "WIFI Antenna 0" (bottom left). Red lines connect the labels to the corresponding antenna connectors on the green PCB.</p>