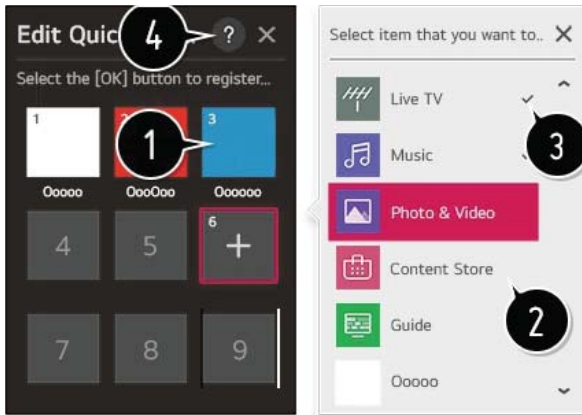


## Launching Apps through QUICK ACCESS

Press and hold a number button on the remote control to open an app or to activate an external input registered to the button.

### Setting QUICK ACCESS

1. Launch the app or select the programme or input you wish to assign.
2. Press and hold the number button (1~9) you want to register.
  - If you press and hold a number button that has already been registered, the registered function will be performed.
  - To see the items that can be registered, select a number that has not been registered in the QUICK ACCESS edit mode.
3. When the registration pop-up window appears, select Yes.
  - If you are in a mode where QUICK ACCESS cannot run, no action will be performed.
  - If you delete a registered app, QUICK ACCESS will be deregistered as well.



## Home Dashboard

You can select or control a device connected to the TV. Press the (⏏) button on the remote control and select Home Dashboard. You can perform the operations you want according to the prompt information on the TV screen.



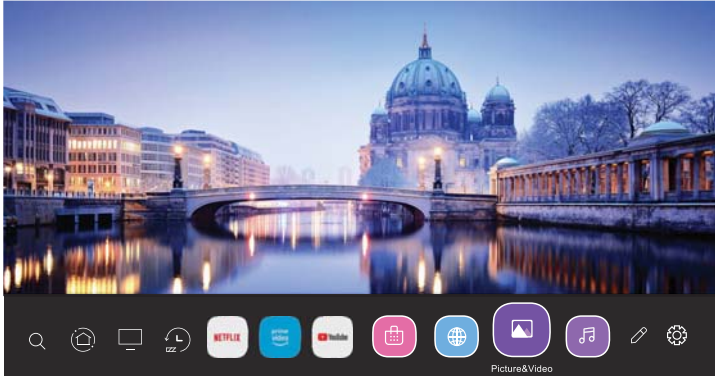
1. Check and select the smart device connected with the LG ThinQ app.
2. Play sound from a smart device connected via Bluetooth.
3. Check and select the external device connected through the external input port or network.
4. The currently selected output speaker is displayed, and you can navigate to the output speaker settings screen.
5. View and select the connected storage device.
6. Check and control the device connected via the Home IoT.
7. Easily control your device by presetting the desired operations.
8. Sign In : You can log in/out to and from the LG ThinQ account you created on mobile.  
Edit : You can edit the name of the device connected to Inputs or Home IoT Devices or configure the related settings.
9. Refreshes the device list.
10. Exit the Home Dashboard.

# USB Media Player

## USB Media Player

Connect a USB storage device to the USB port on the TV to enjoy the content files stored on the USB storage device on your TV.

Support format: jpeg, jpg, jpe, png and bmp for photo, mp3, wav, ogg, wma, flac for music, asf, avi, mp4, 3gp, mkv, ts, mpg, vob for video.



### Using Photo Player

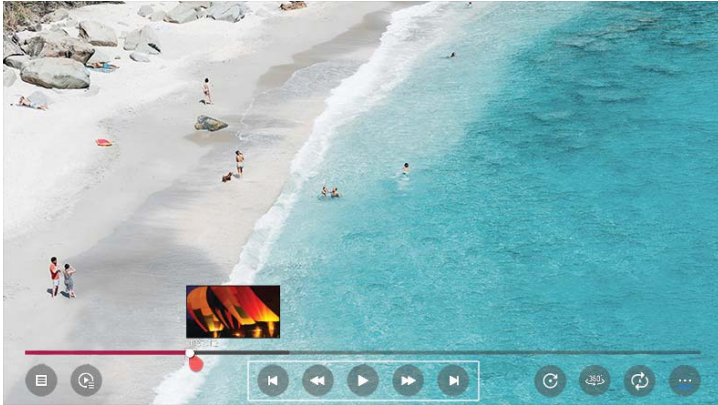
Selecting Photo & Video app and press (Ⓢ) button to enter the menu. You can view your saved photos. Press Arrow buttons to select the file you want to watch in the file selecting menu, then press (Ⓢ) button to start playing. When playing media, press the (Ⓢ) button to display and operate file details.



# USB Media Player

## Playing Video

Selecting Photo & Video app and press (Ⓞ) button to enter the menu. You can view your saved videos. Press Arrow buttons to select the file you want to watch in the file selecting menu, then press (Ⓞ) button to start playing. When playing media, press the (Ⓞ) button to display and operate file details.



## Playing Music

Selecting Music app press (Ⓞ) button to enter the menu. You can listen your saved music. Press Arrow buttons to select the file you want to listen to music in the file selecting menu, then press (Ⓞ) button to start playing. When playing media, press the (Ⓞ) button to display and operate file details.



# DISPLAY MODE

## VIDEO FORMATS

SUPPORTED COMPONENT / HDMI INPUT MODE			
Resolution	Horizontal Scanning Frequency ( KHz )	Vertical Scanning Frequency (Hz)	Format
720 x 480	15.73	59.94	480 i
720 x 480	31.5	59.94	480 p
1280 x 720	45	60	720 p
1920 x 1080	33.75	60	1080 i
1920 x 1080	27	24	1080 p
1920 x 1080	67.50	60	1080 p
3840 X 2160	53.9	24	2160p
3840 X 2160	67.5	30	2160p
3840 X 2160	134.5	60	2160p

### NOTE:

The above listed formats are also related to the AV devices you are about to connect. Before you connect this unit with others please read all instructions carefully and make sure all necessary cables are connected.

This unit may be incompatible with some other formats which are not meet the above conditions.

# SPECIFICATION

Model Description		55"LED TV
Panel	Panel Type	LED Panel
	Diagonal Size	55inches
	Screen Format	16:9
	Resolution	3840 x 2160
	Brightness	280cd/m <sup>2</sup>
	Contrast	1200:1
	View Angle	178 (H)/178(V)
	Response Time	8.0ms
	Maximum Color	16.7M colors
Systems	Color System	NTSC/ATSC
	Sound System	M/N
	Sound Output	L/R Speaker: 10W+10W
Input / Output Jacks	RF Input	75 ohm external terminal
	HDMI Input	480i, 480p, 720p, 1080i, 1080p, 2160p.
		HDMI1(2.0), HDMI2/ARC(2.0), HDMI3(2.0)
	Composite Video Input	1.0 Vp-p, 75ohms
	Sound Input	AV AUDIO: For CVBS Audio input 500mV rms, Impedance: 20k ohms
	Digital audio out	S/PDIF Optical
Power	USB Port	Media player
	Power Requirement	100-120V~60Hz
	Rated Power Consumption	90W

This manual is only for your reference.  
 Specifications are subject to update without prior notice.

# TROUBLESHOOTING GUIDE

## SYMPTOM

## CAUSE (AND REMEDY )

### TV

Bad Picture (snow, multiple images distortion,blurry)

- Check the location of the antenna and adjust it if necessary.
- Make sure the antenna cable is firmly connected.
- Make sure all input cables are firmly connected.

No sound.

- Increase the volume.
- Check whether the mute function has been activated on the Remote Control.

Black and White picture.

- Check the PICTURE setting within the PICTURE menu.
- Check to make sure the program you are watching is broadcast in Color and not Black & White.

No picture or sound.

- Make sure the unit is plugged in and turned on.
- Make sure that the ATV mode is selected.
- Try a new channel to check for possible station trouble.
- Make sure the antenna is connected properly.
- Increase the volume.
- Make sure the antenna or audio/video source device is working properly.
- Make sure all cables are firmly connected.
- Check for local interference.

Colored patches of picture.

- Make sure there are no unshielded electrical devices nearby that are causing interference.
- Turn the TV off for 30 minutes, then try it again.

Panel function key does not respond correctly.

- Under the influence of electrostatic phenomenon, the product may malfunction and require usertopowerreset.
- Unplug and re-plug the AC power cord.

The display monitor's panel goes hot.

- LED TV takes inside lighten phosphor. It may increase the temperature of the screen in some occasions. It's not a defect.

Unusual dots

- Black dots and Bright points may appear on the LED screen. This is a structural property of the LED panel and is not a defect.

Stripes on screen

- Adjust the impulse phase may decrease stripes. RGB in

The top of the monitor gets hot.

- It may occur during long-time working. It's not a defect.

Unable to select a certain channel.

- The channel may be skipped. Choose this channel by directly selecting the buttons from the remote control.

Disorder display at power on.

- This may be caused because of a very short interval between POWER OFF and ON.
- Unplug the power and restart.

To make a warranty claim, please email [support@curtiscs.com](mailto:support@curtiscs.com) or call 1-800-968-9853.

### **1 Year Warranty**

This product is warranted to be free from defects in material and workmanship for a period of one (1) year from the date of original purchase. During this period, your exclusive remedy is repair or replacement of this product or component found to be defective, at our option; however, you are responsible for all costs associated with returning the product to us. If the product or component is no longer available, we will replace with a similar one of equal or greater value. Prior to a replacement being sent, the product must be rendered inoperable or returned to us.

This warranty does **not** cover glass, filters, wear from normal use, use not in conformity with the printed directions., or damage to the product resulting from accident, alteration, abuse, or misuse. This warranty extends only to the original consumer purchaser or gift recipient. Keep the original sales receipt, as proof of purchase is required to make a warranty claim. This warranty is void if the product is used for other than single-family household use or subjected to any voltage and waveform other than as on the specified rating on the label (e.g., 120V~60Hz).

We exclude all claims for special, incidental, and consequential damages caused by breach of express or implied warranty. All liability is limited to the amount of the purchase price. **Every implied warranty, including any statutory warranty or condition of merchantability or fitness for a particular purpose, is disclaimed except to the extent prohibited by law, in which case such warranty or condition is limited to the duration of this written warranty.** This warranty gives you specific legal rights. You may have other legal rights that vary depending on where you live. Some states or provinces do not allow limitations on implied warranties or special, incidental, or consequential damages, so the foregoing limitations may not apply to you.

For faster service, locate the model, type, and serial numbers on your appliance.

### **90 Day Warranty**

Remote controls are warranted from date of purchase for a period of ninety (90) days, provided remote has been used as intended and free from damage.

ATTACH YOUR PROOF OF PURCHASE HERE, PROOF OF PURCHASE IS REQUIRED TO OBTAIN WARRANTY SERVICE.

Please have the following information available when you contact the Support Team:

- Name, address and telephone number.
- Model number and serial number.
- A clear, detailed description of the problem.
- Proof of purchase including dealer or retailer name, address and date of purchase.



For service assistance and product information,  
please call: 1-800-968-9853.  
Pour obtenir assistance et information appelez: 1-800-968-9853.

Curtis International Ltd.  
7045 BECKETT DRIVE, UNIT 15, MISSISSAUGA, ON, L5S 2A3  
[www.curtisint.com](http://www.curtisint.com)