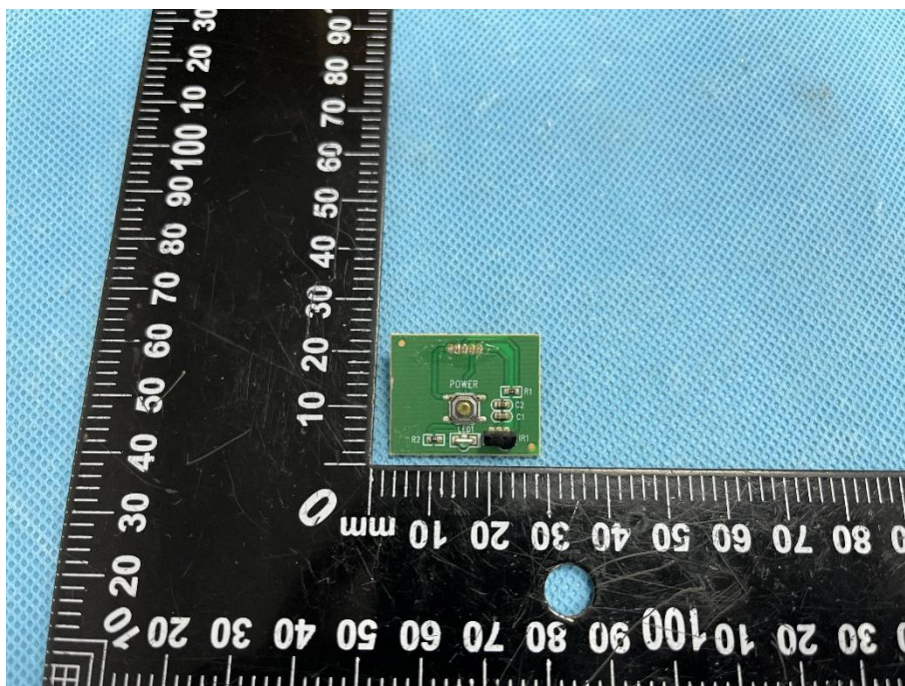



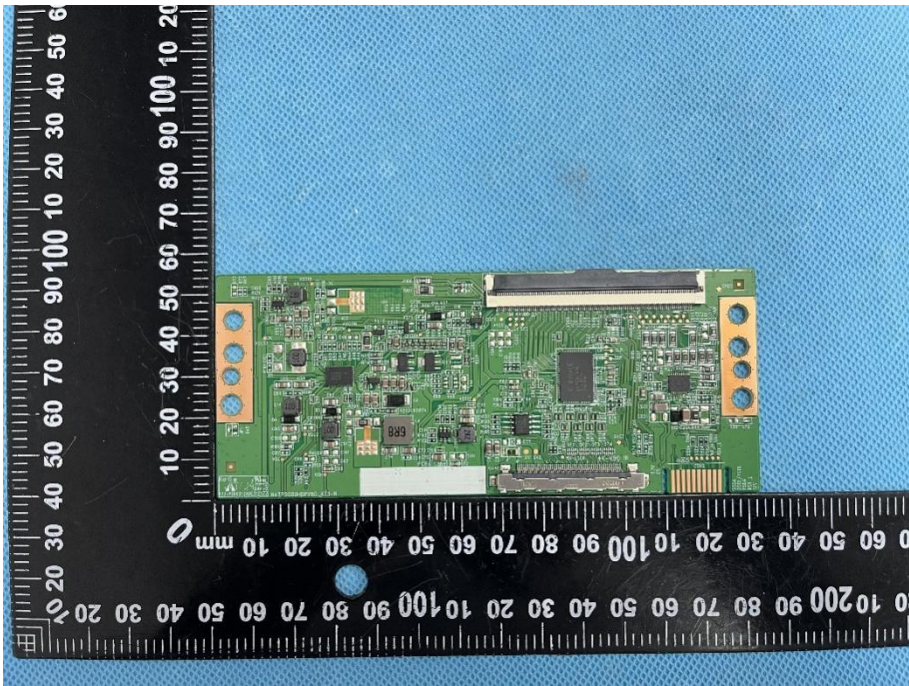
EXHIBIT 3 - EUT INTERNAL PHOTOGRAPHS

EUT Housing and Board View 1

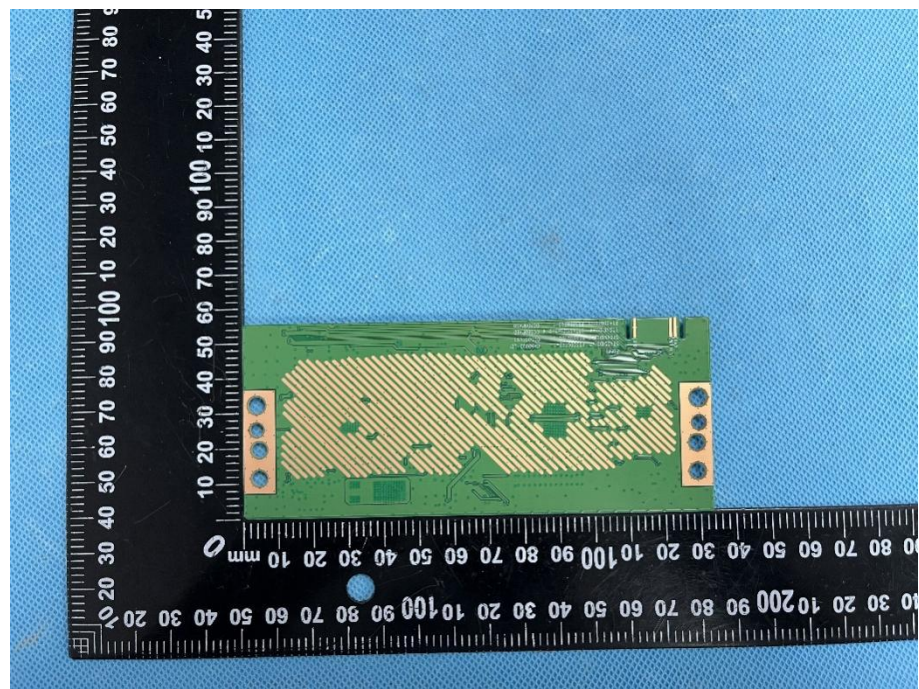


Solder Board-Component View 1

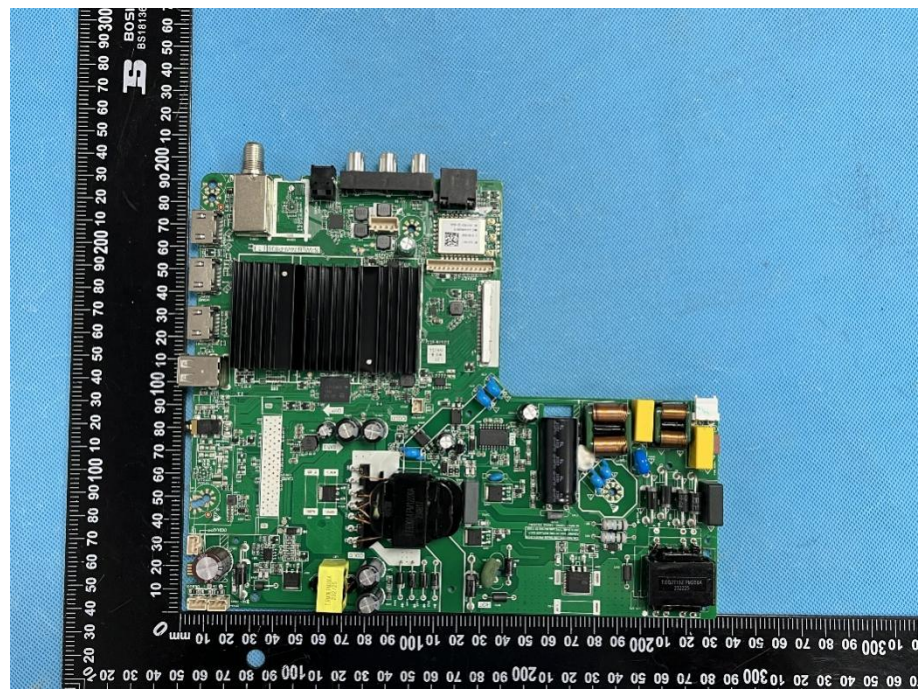


<p>Solder Board-Component View 2</p>	 <p>A close-up photograph of a yellow component mounted on a green PCB. The component is rectangular and has some text on it, including "LA 20-0-02E" and "COMPTON". A black ruler with white markings is placed below the component for scale. The ruler shows measurements in millimeters, with the component positioned between the 10 mm and 20 mm marks. The background is a blue textured surface.</p>
<p>Solder Board-Component View 3</p>	 <p>A photograph showing the entire green PCB assembly. The board is populated with various electronic components, including a large central chip, several smaller chips, and connectors. Two orange connectors are visible on the left and right sides. A black ruler with white markings is placed below the board for scale. The ruler shows measurements in millimeters, with the board spanning from approximately 10 mm to 100 mm. The background is a blue textured surface.</p>

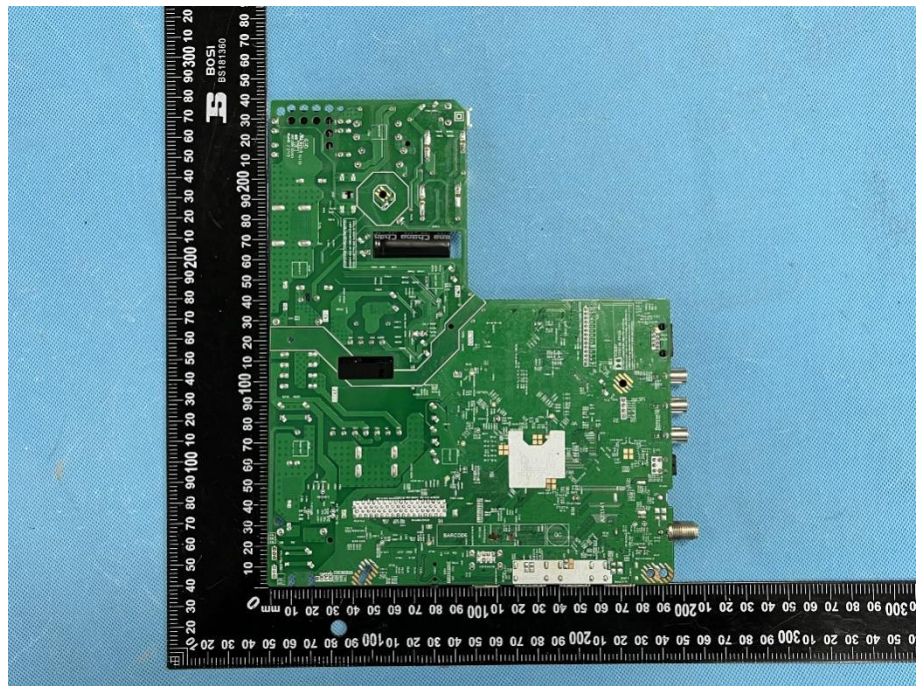
**Solder
Board-Component
View 4**



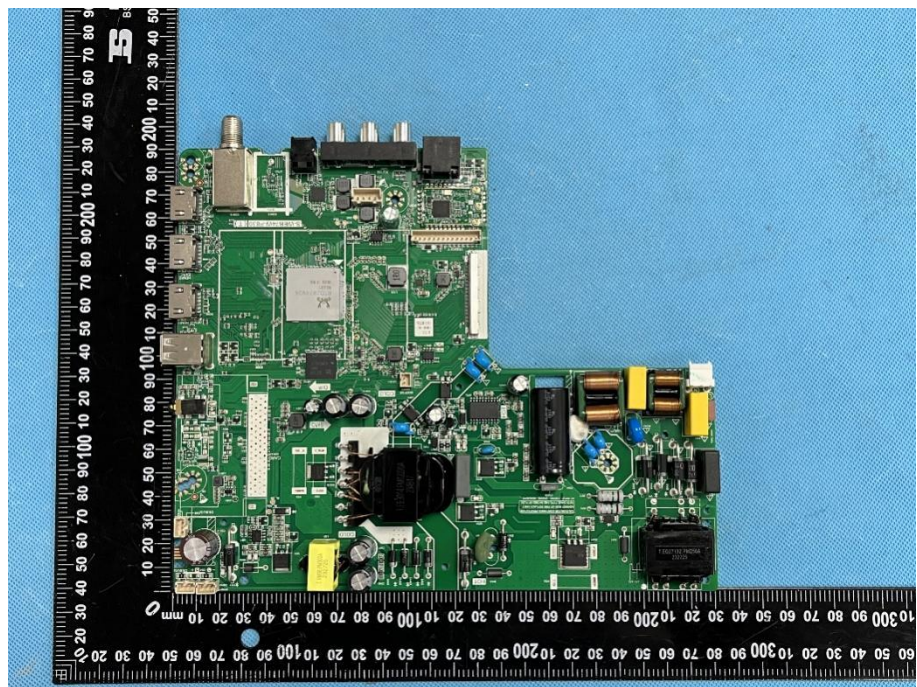
**Solder
Board-Component
View 5**



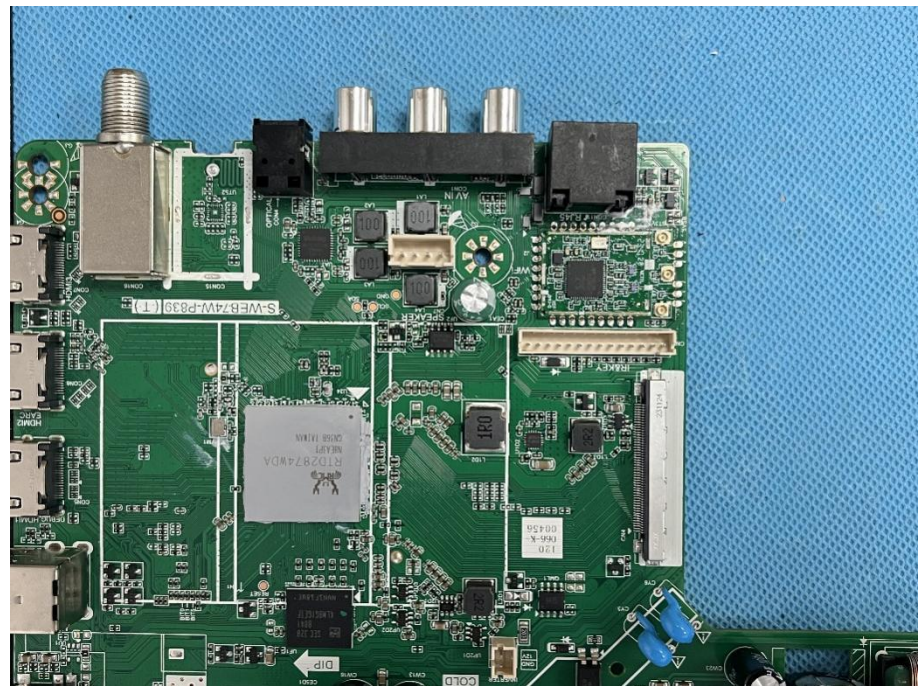
**Solder
Board-Component
View 6**



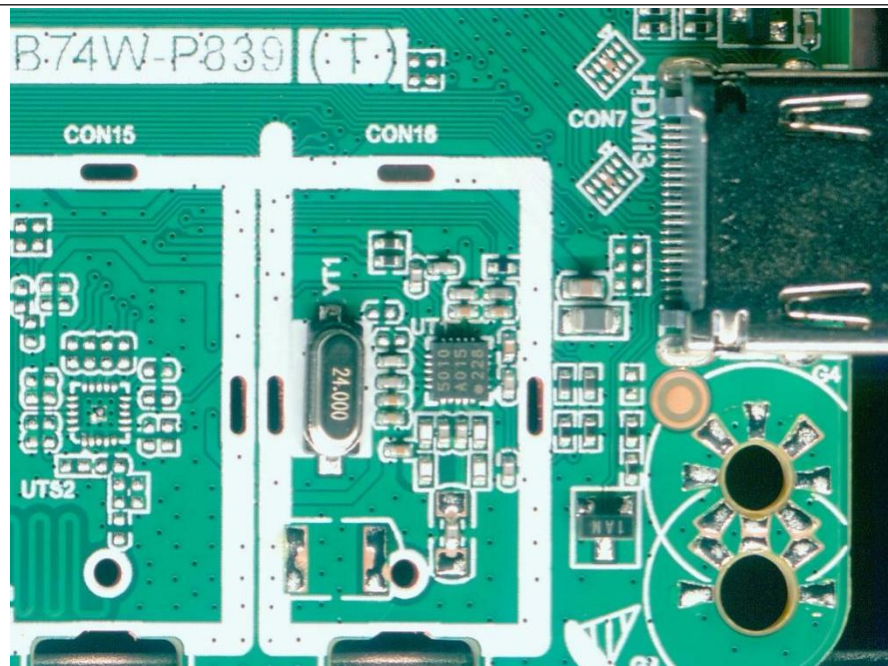
**Solder
Board-Component
View 7**



**Solder
Board-Component
View 8**



**Solder
Board-Component
View 9**



Antenna View

