

SURE FLAP[®]

PETCARE INNOVATION

Model ID: MPF001

FCC Detail

FRN:

0019054196

FCC ID:

XO9-MPF001-001

IC Detail

IC Company NO:

8906A

IC No:

8906A-MPF01001

Internal Photo



Figure 1: Removing the lid and the bowl



Figure 2: Removing the battery covers

SURE FLAP[®]

PETCARE INNOVATION

Model ID: MPF001

FCC Detail

FRN:

0019054196

FCC ID:

XO9-MPF001-001

IC Detail

IC Company NO:

8906A

IC No:

8906A-MPF01001



Figure 3: Infra-Red Receiver



Figure 4: Infra-Red Emitter

SURE FLAP[®]

PETCARE INNOVATION

Model ID: MPF001

FCC Detail

FRN: 0019054196
FCC ID: XO9-MPF001-001

IC Detail

IC Company NO: 8906A
IC No: 8906A-MPF01001



Figure 5: Base removed

SURE FLAP[®]

PETCARE INNOVATION

Model ID: MPF001

FCC Detail

FRN: 0019054196
FCC ID: XO9-MPF001-001

IC Detail

IC Company NO: 8906A
IC No: 8906A-MPF01001

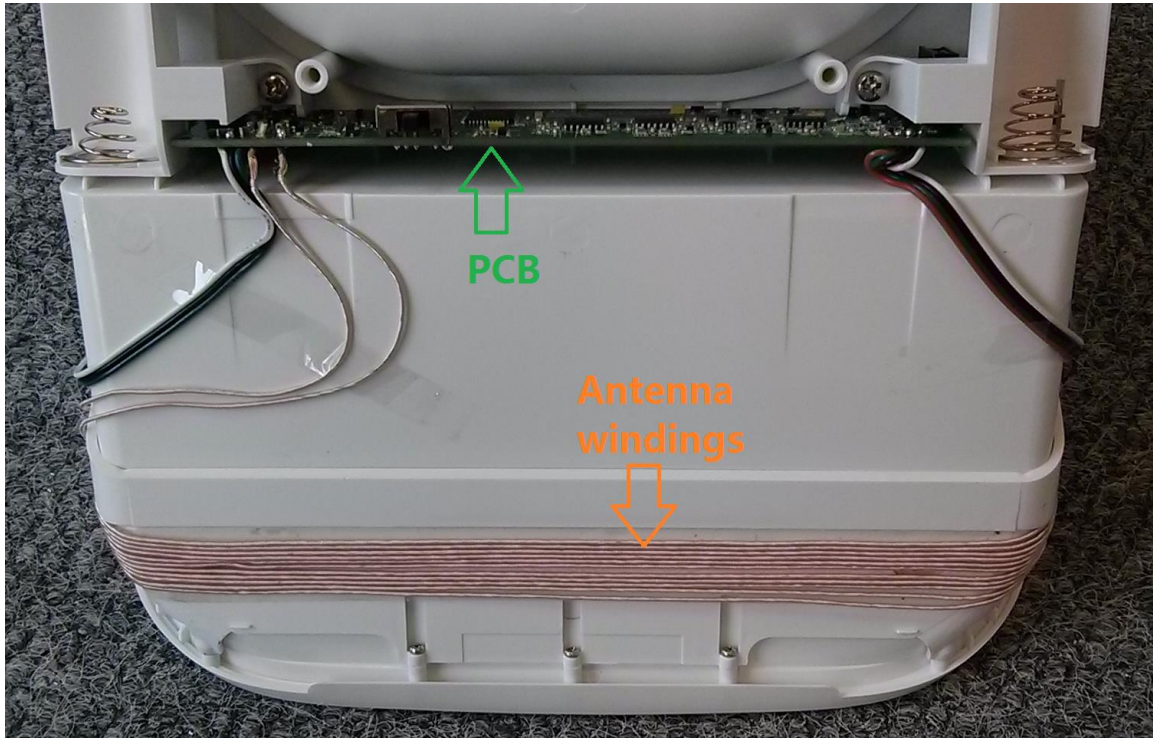


Figure 6: Antenna windings and Main PCB

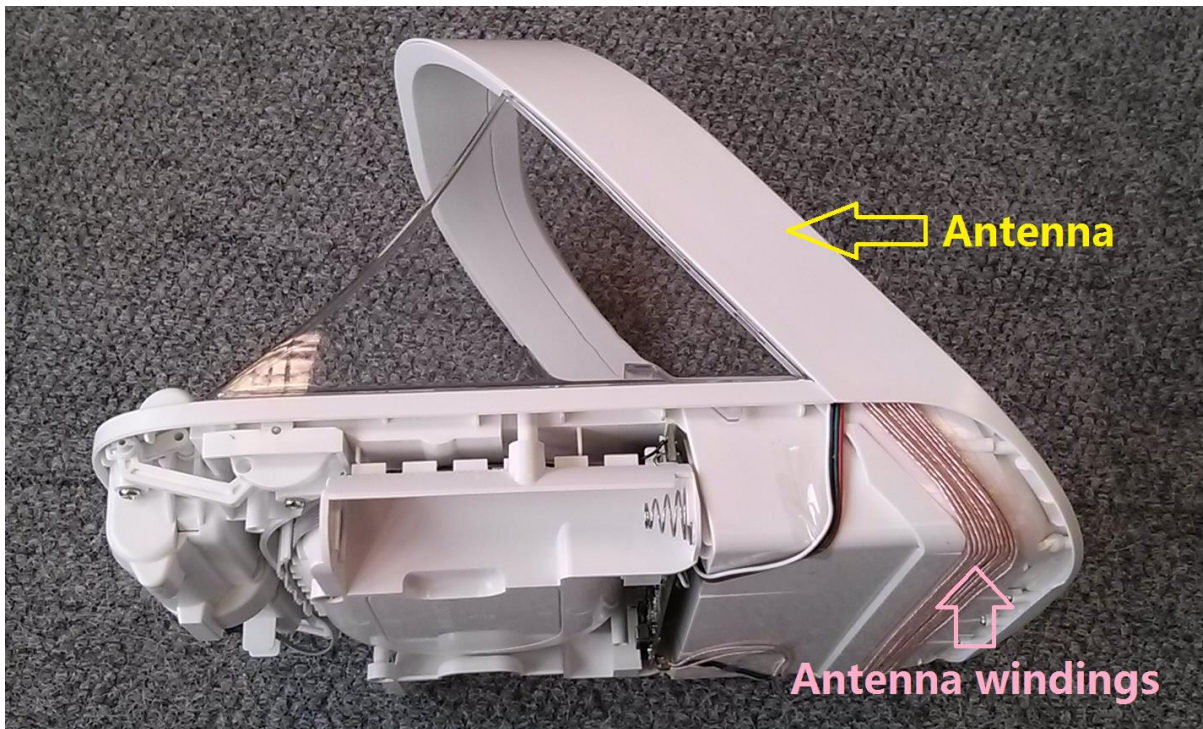


Figure 7: Antenna and antenna windings side view

SURE FLAP[®]

PETCARE INNOVATION

Model ID: MPF001

FCC Detail

FRN:

0019054196

FCC ID:

XO9-MPF001-001

IC Detail

IC Company NO:

8906A

IC No:

8906A-MPF01001

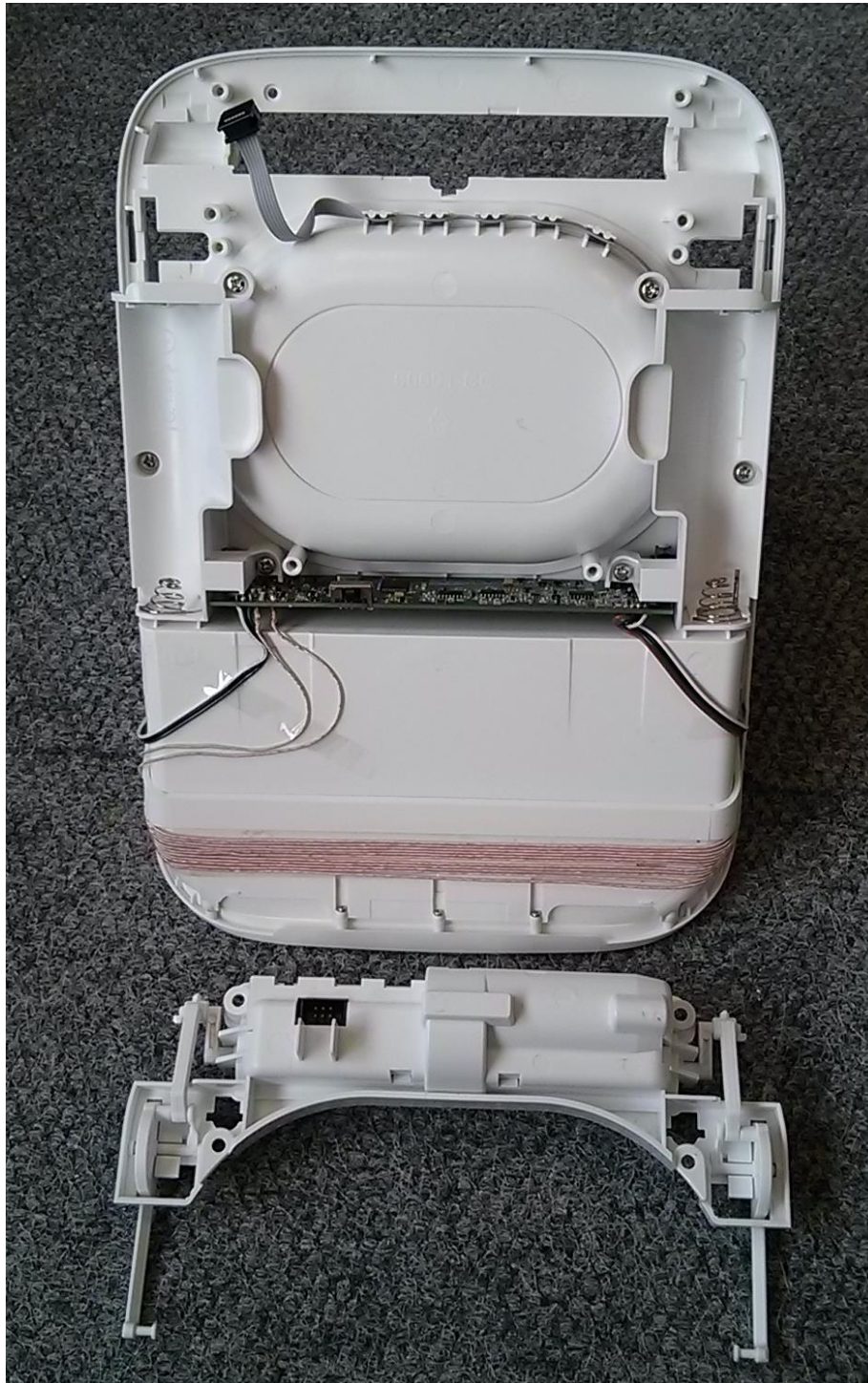


Figure 8: Motor Cartridge removed

SURE FLAP[®]

PETCARE INNOVATION

Model ID: MPF001

FCC Detail

FRN: 0019054196
FCC ID: XO9-MPF001-001

IC Detail

IC Company NO: 8906A
IC No: 8906A-MPF01001



Figure 9: Motor Cartridge Bottom View



Figure 10: Motor Cartridge Top View



Figure 11: Motor Housing in the Motor Cartridge

SURE FLAP[®]

PETCARE INNOVATION

Model ID: MPF001

FCC Detail

FRN: 0019054196
FCC ID: XO9-MPF001-001

IC Detail

IC Company NO: 8906A
IC No: 8906A-MPF01001

PCB

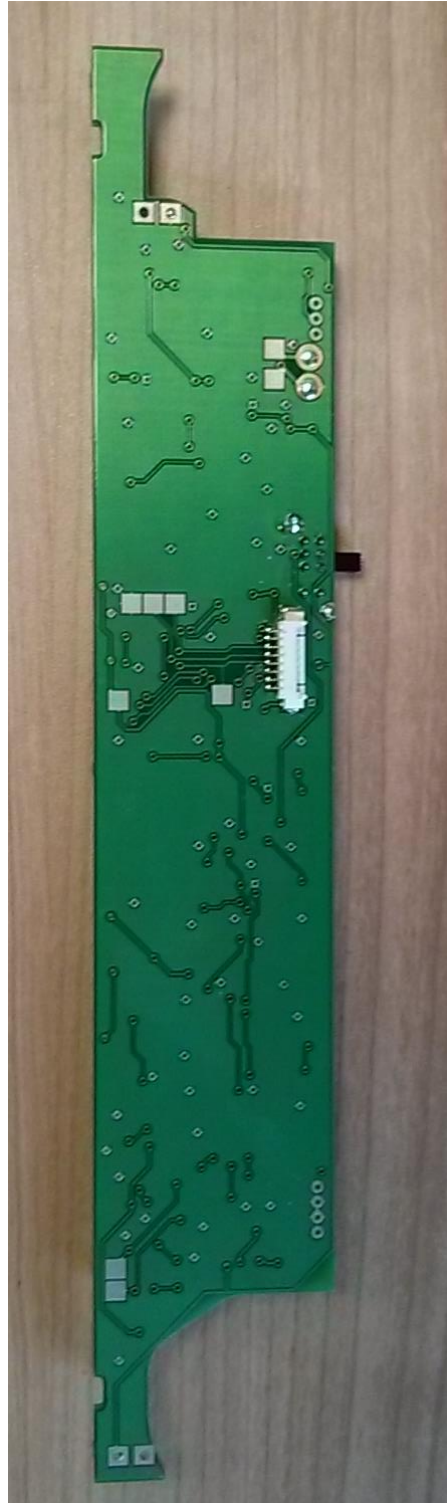


Figure 12: Main PCB Top and Bottom View

SURE FLAP[®]

PETCARE INNOVATION

Model ID: MPF001

FCC Detail

FRN:

0019054196

FCC ID:

XO9-MPF001-001

IC Detail

IC Company NO:

8906A

IC No:

8906A-MPF01001

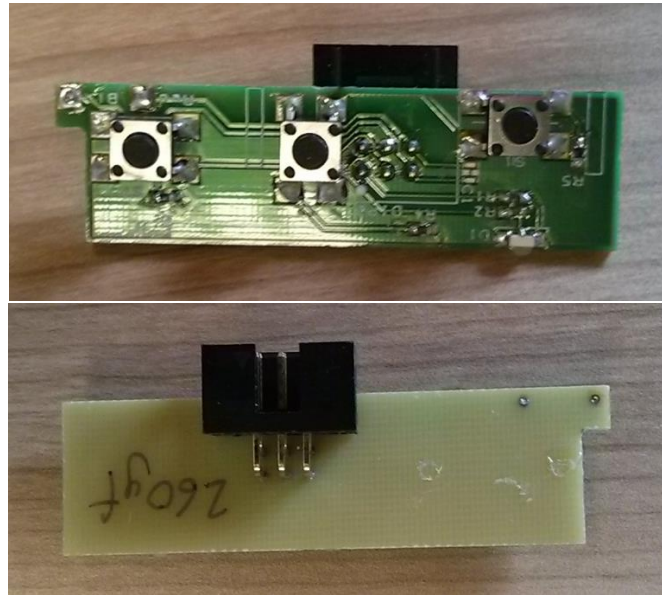


Figure 13: Daughter PCB Top and Bottom View



Figure 14: Emitter Board



Figure 15: Receiver Board