

DSCF v2

FCC details

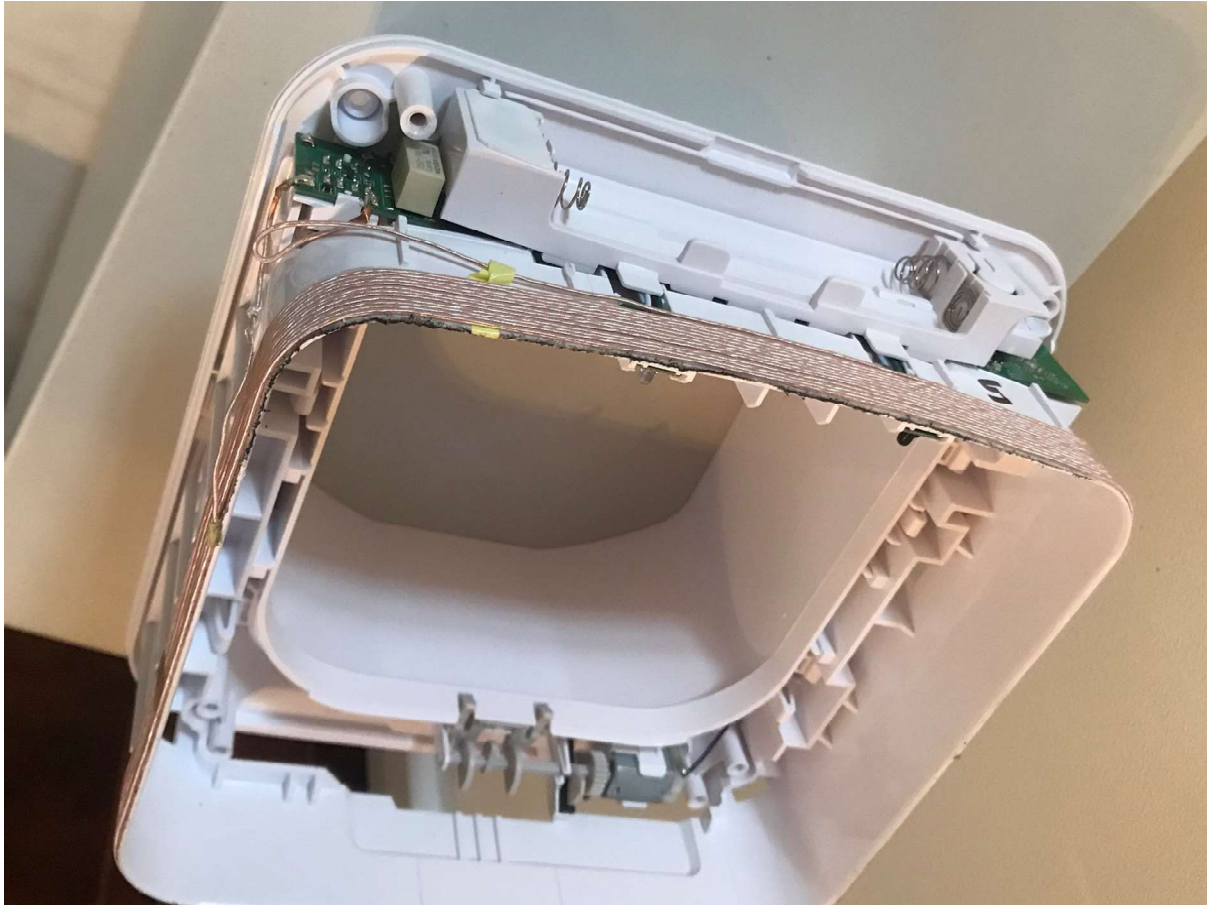
FRN: 0019054196
FCC ID: XO9-DSCF003
Model ID: DSCF



Ground Floor Building 2030
Cambourne Business Park
Cambourne
Cambridge
CB23 6DW
United Kingdom

Tel: +44 (0)1954 211 664
surepetcare.com

Product Internal Images



Product with front cover removed – oblique view

DSCF v2

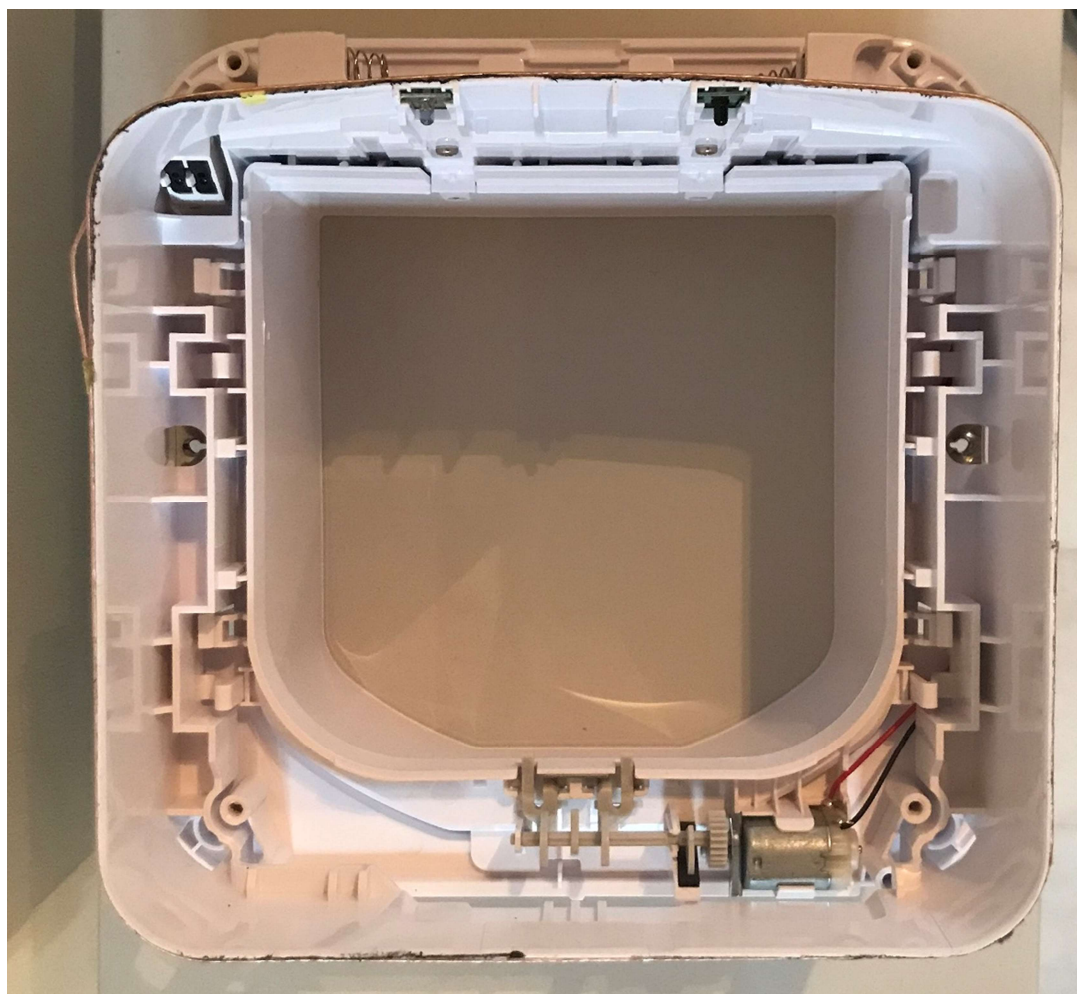
FCC details

FRN: 0019054196
FCC ID: XO9-DSCF003
Model ID: DSCF



Ground Floor Building 2030
Cambourne Business Park
Cambourne
Cambridge
CB23 6DW
United Kingdom

Tel: +44 (0)1954 211 664
surepetcare.com



Product with front cover removed – top down view – note motor location at bottom of unit

DSCF v2

FCC details

FRN: 0019054196
FCC ID: XO9-DSCF003
Model ID: DSCF



Ground Floor Building 2030
Cambourne Business Park
Cambourne
Cambridge
CB23 6DW
United Kingdom

Tel: +44 (0)1954 211 664
surepetcare.com



Inside of the front cover showing latch system

DSCF v2

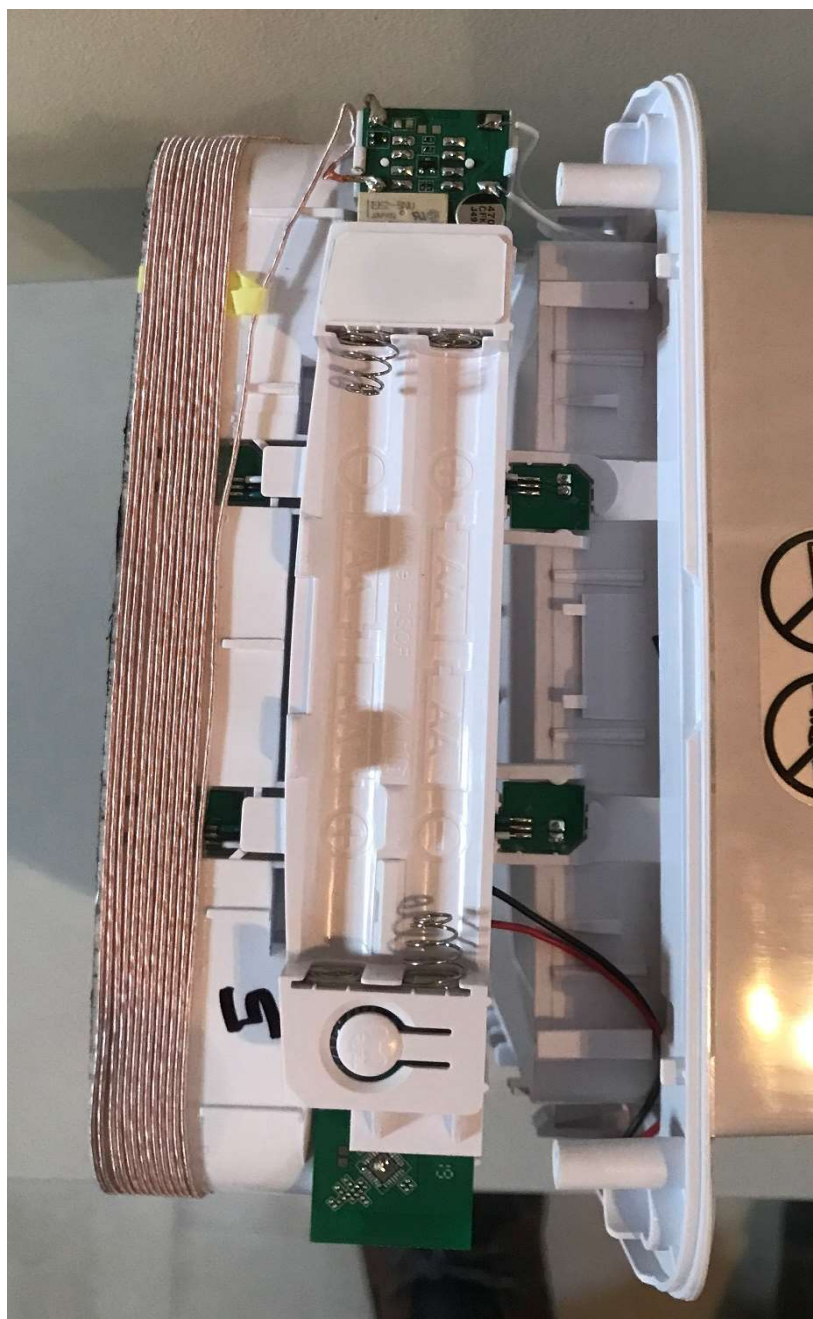
FCC details

FRN: 0019054196
FCC ID: XO9-DSCF003
Model ID: DSCF



Ground Floor Building 2030
Cambourne Business Park
Cambourne
Cambridge
CB23 6DW
United Kingdom

Tel: +44 (0)1954 211 664
surepetcare.com



View from above showing battery tray with the PCB underneath. Also visible are the small PCBs holding the LED emitters and receivers for the internal and external detectors.

DSCF v2

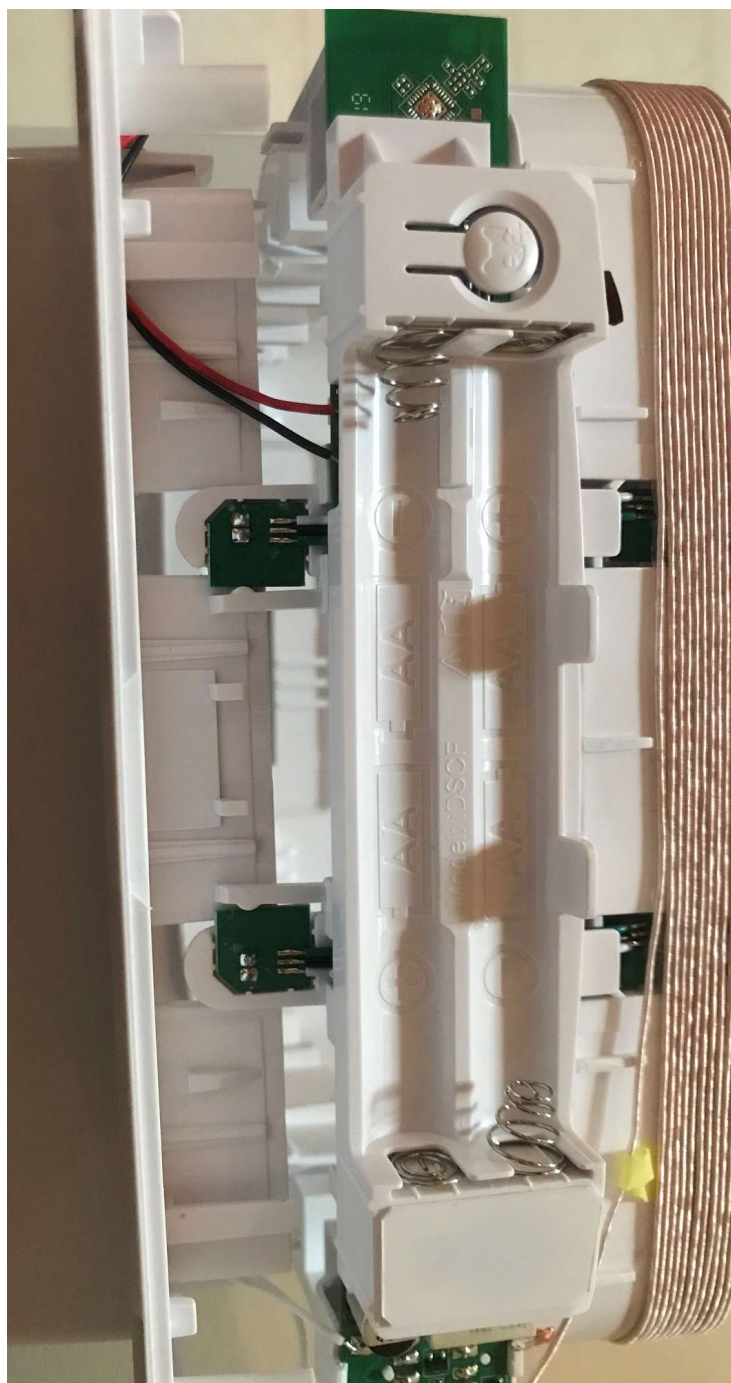
FCC details

FRN: 0019054196
FCC ID: XO9-DSCF003
Model ID: DSCF



Ground Floor Building 2030
Cambourne Business Park
Cambourne
Cambridge
CB23 6DW
United Kingdom

Tel: +44 (0)1954 211 664
surepetcare.com



detail view of battery tray and internal antenna winding

DSCF v2

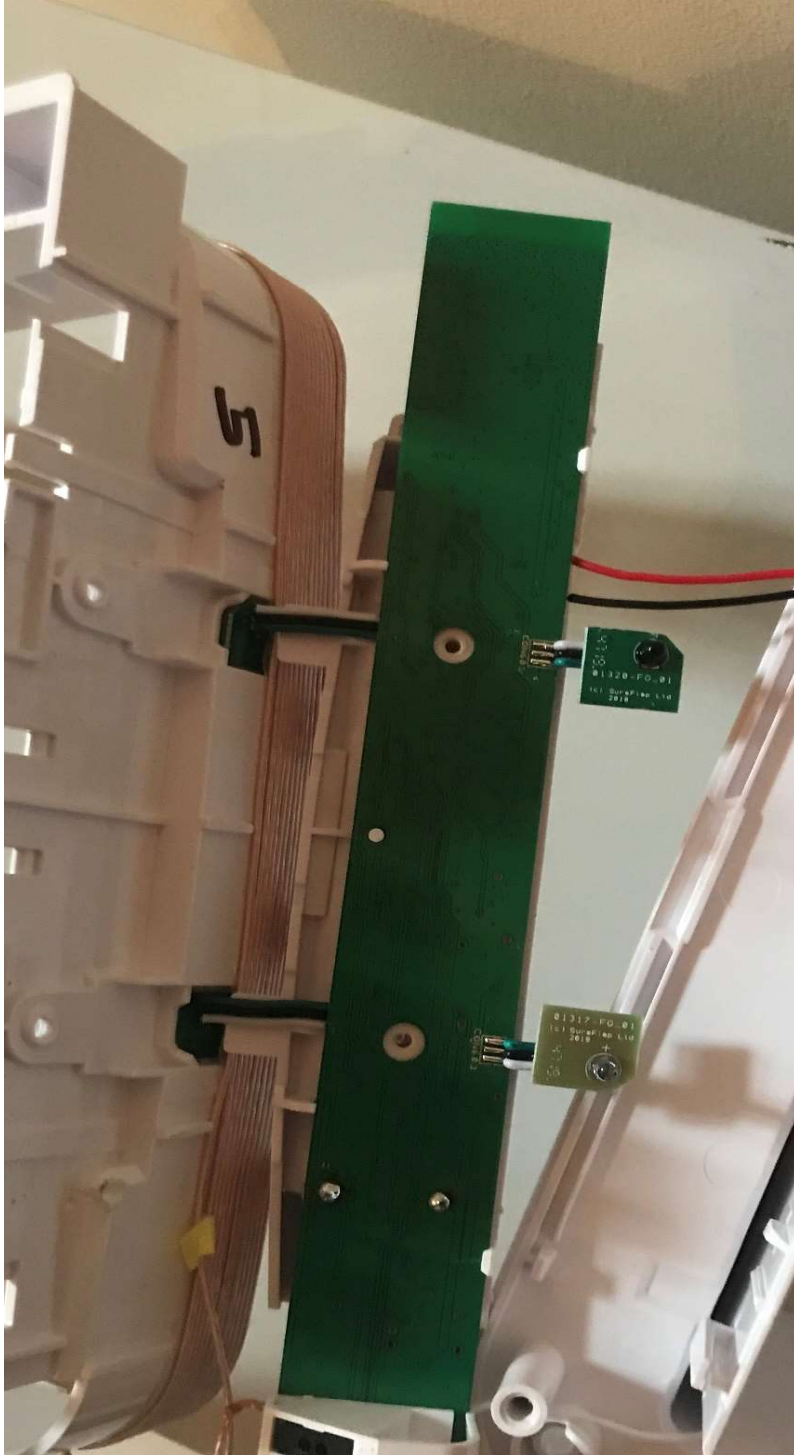
FCC details

FRN: 0019054196
FCC ID: XO9-DSCF003
Model ID: DSCF



Ground Floor Building 2030
Cambourne Business Park
Cambourne
Cambridge
CB23 6DW
United Kingdom

Tel: +44 (0)1954 211 664
surepetcare.com



Reverse of PCB showing infra red detector and emitter PCBs

DSCF v2

FCC details

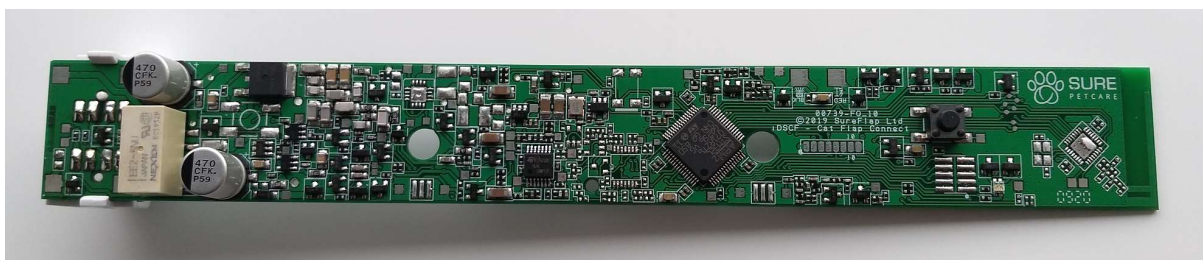
FRN: 0019054196
FCC ID: XO9-DSCF003
Model ID: DSCF



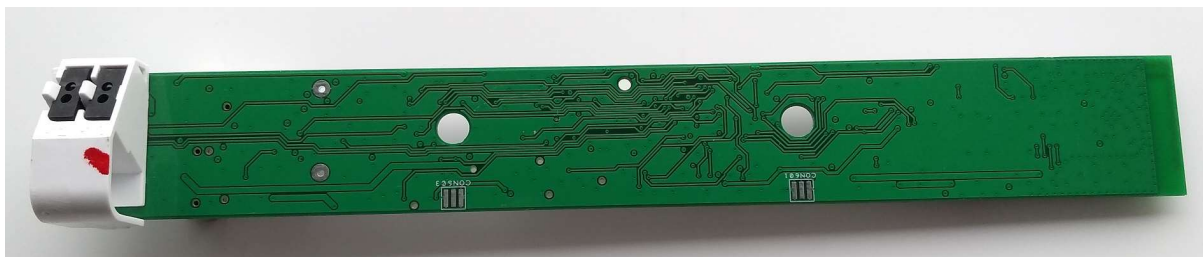
Ground Floor Building 2030
Cambourne Business Park
Cambourne
Cambridge
CB23 6DW
United Kingdom

Tel: +44 (0)1954 211 664
surepetcare.com

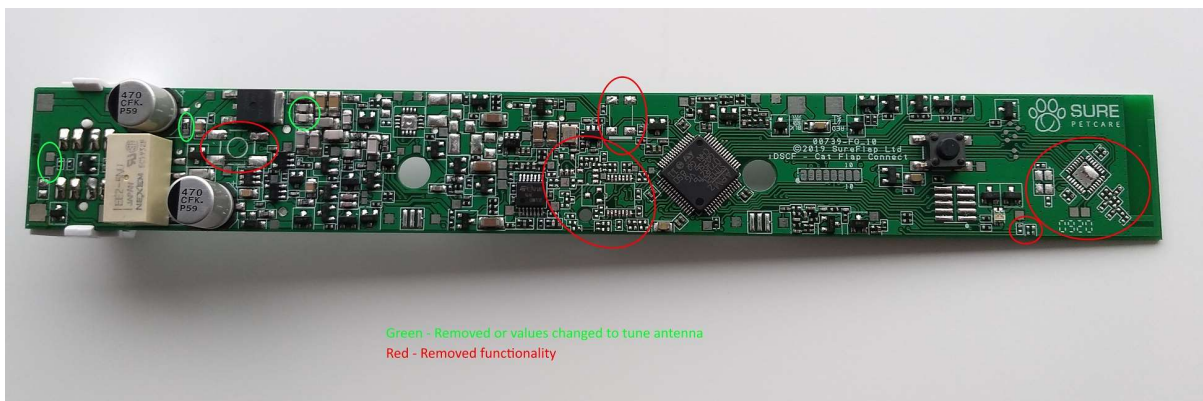
Main PCBa assembly



Component side with battery tray removed



Reverse side of PCB



Detail showing areas of change to the main PCBa from the iDSCF board. Red ring shows depopulated area of PCB