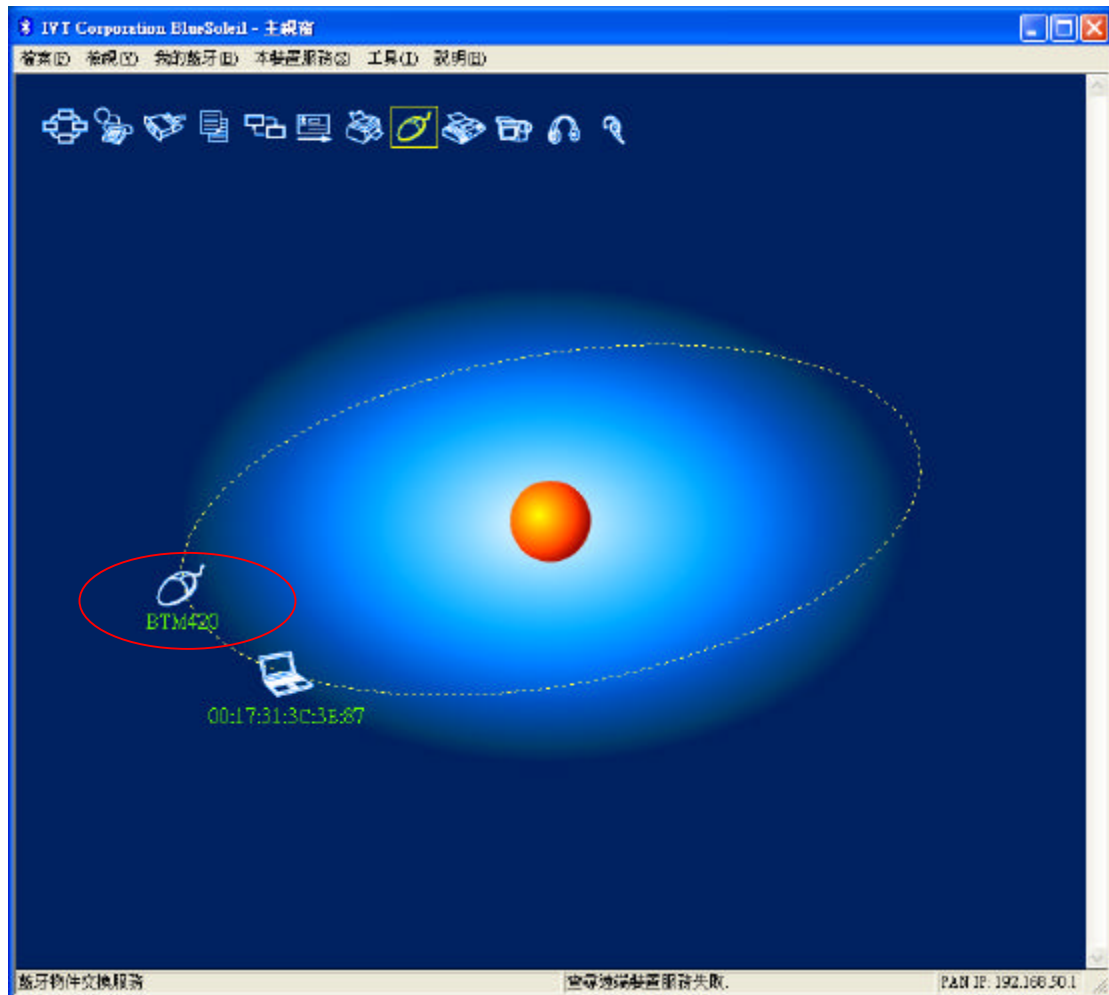


## BTM420 user guide from AIRUS

- 1). Put on the battery. First time the battery in, BTM420 will start automatically and in discovery mode.
- 2). On PC site using IVT or Toshiba or Widcomm Bluetooth software (Remember use built-in or USB Bluetooth dongle)
- 3). Search the Bluetooth device from IVT or Toshiba. If you success, you will see the screen-shot below (IVT):



- 4). When press the key, you will see the LED flash twice. And press page up/down in powerpoint.
- 5). After 5 mins, the BTM420 will power off automatically and LED

light 3 times. After that you can power on by press the key.

- 6). When the BTM420 power on, you will see the LED light 3 times. And notice that press 3 sec is power on, 5 sec continuous is in discovery mode (You can pair to another Bluetooth device).

IMPORTANT NOTE: To comply with the FCC RF exposure compliance requirements, no change to the antenna or the device is permitted. Any change to the antenna or the device could result in the device exceeding the RF exposure requirements and void user's authority to operate the device.

#### FCC INFORMATION

The Federal Communication Commission Radio Frequency Interference Statement includes the following paragraph:

The equipment has been tested and found to comply with the limits for a Class B Digital Device, pursuant to part 15 of the FCC Rules. These limits are designed to provide reasonable protection against harmful interference in a residential installation. This equipment generates, uses and can radiate radio frequency energy and, if not installed and used in accordance with the instruction, may cause harmful interference to radio communication. However, there is no grantee that interference will not occur in a particular installation. If this equipment dose cause harmful interference to radio or television reception, which can be determined by turning the equipment off and on , the user is encouraged to try to correct the interference by one or more of the following measures:

- Reorient or relocate the receiving antenna.
- Increase the separation between the equipment and receiver.
- Connect the equipment into an outlet on a circuit different from that to which the receiver is connected.
- Consult the dealer or an experienced radio/TV technician for help.

The user should not modify or change this equipment without written approval form **Parrot's Technology GmbH**. Modification could void authority to use this equipment.

**This device complies with Part15 of the FCC Rules.**

**Operation is subject to the following two conditions :**

- (1) This device may not cause harmful interference , and**
- (2) This device must accept any interference received, including.  
Interference that may cause undesired operation.**

**Model No. : BTM420**

**FCC ID : XNPBTM420**