

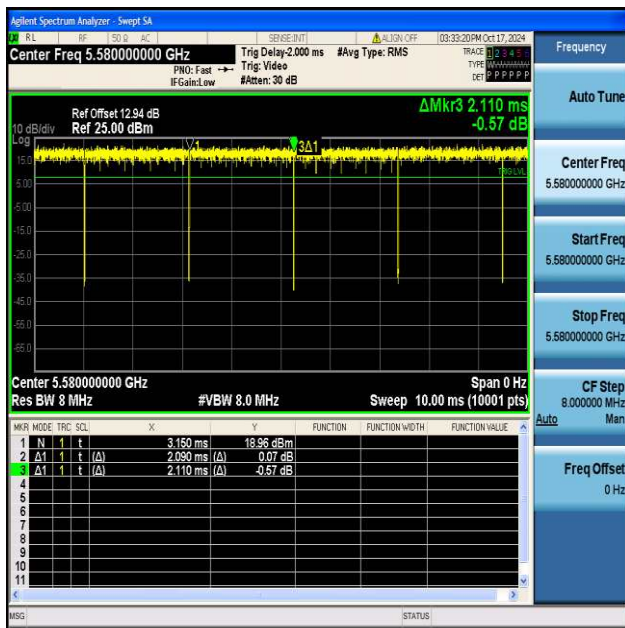
## Test Graphs



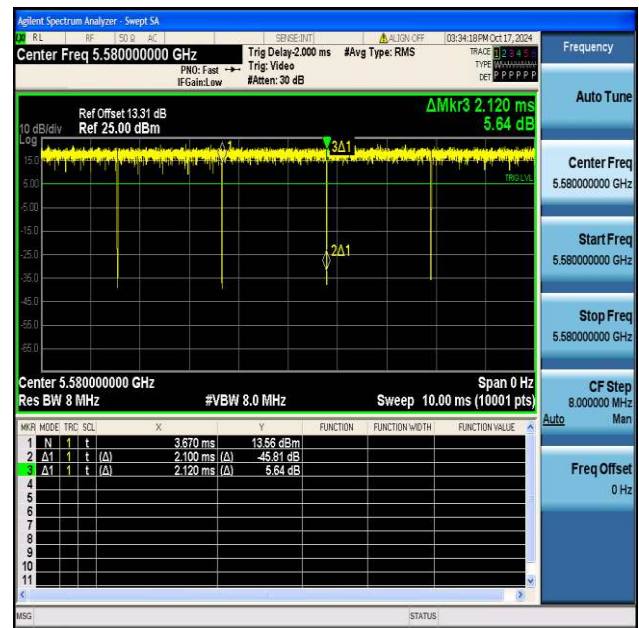
NTVN-11a-CDD-Ant1-5500



NTVN-11a-CDD-Ant2-5500



NTVN-11a-CDD-Ant1-5580



NTVN-11a-CDD-Ant2-5580



NTNV-11a-CDD-Ant1-5700



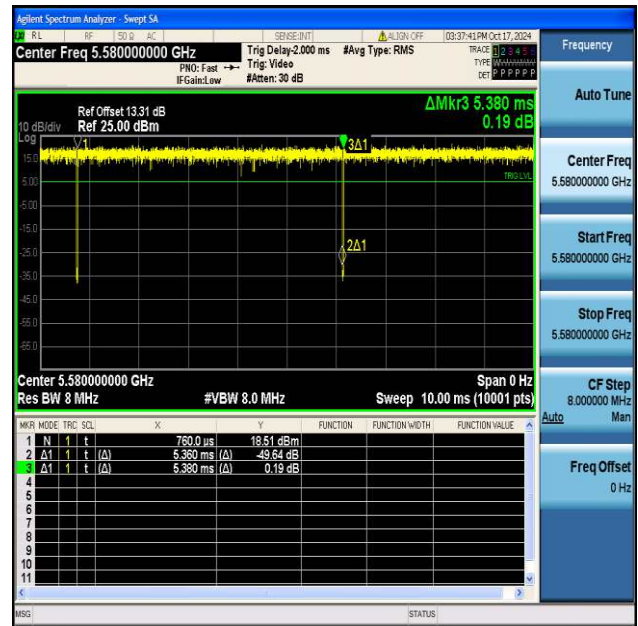
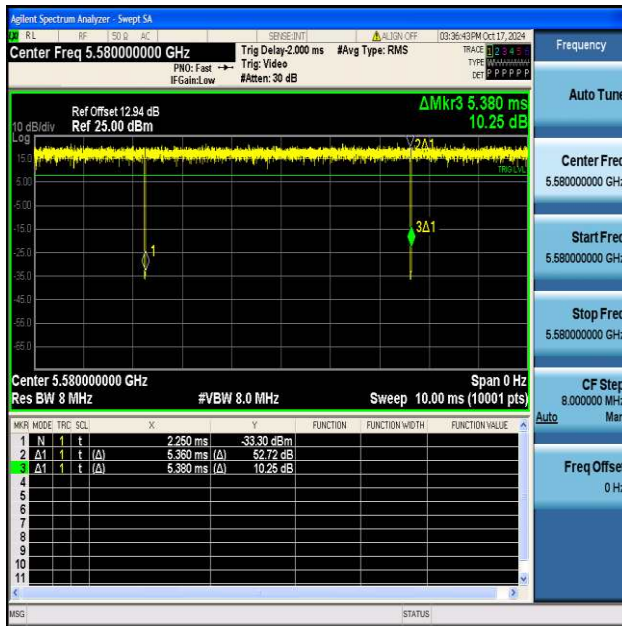
NTNV-11a-CDD-Ant2-5700



NTNV-11n20MIMO-Ant1-5500



NTNV-11n20MIMO-Ant2-5500



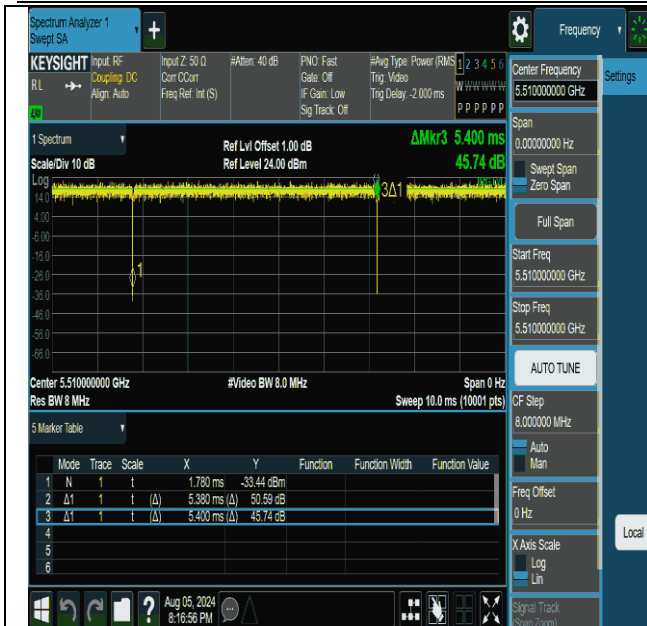
NTNV-11n20MIMO-Ant1-5580



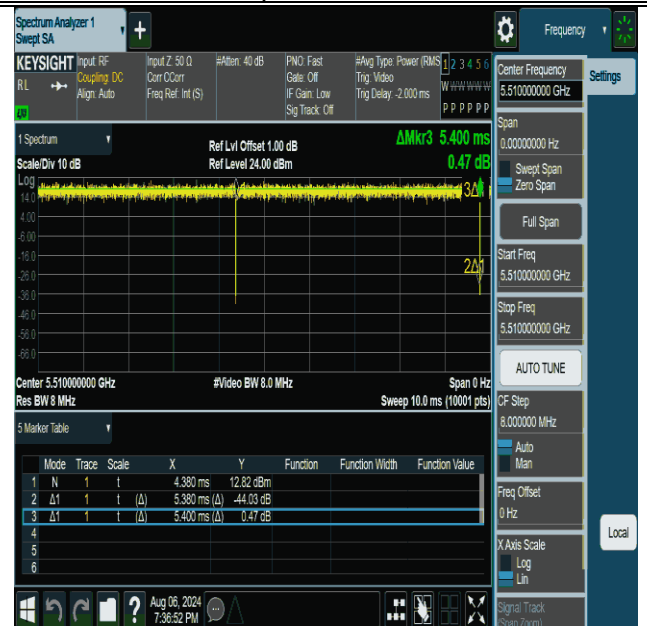
NTNV-11n20MIMO-Ant1-5700



NTNV-11n20MIMO-Ant2-5700



NTNV-11n40MIMO-Ant1-5510



NTNV-11n40MIMO-Ant2-5510



NTNV-11n40MIMO-Ant1-5590



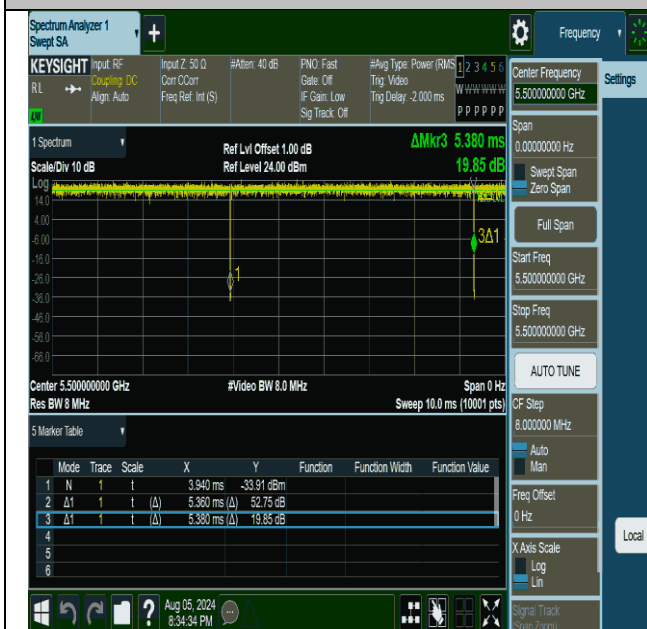
NTNV-11n40MIMO-Ant2-5590



NTNV-11n40MIMO-Ant1-5670



NTNV-11n40MIMO-Ant2-5670

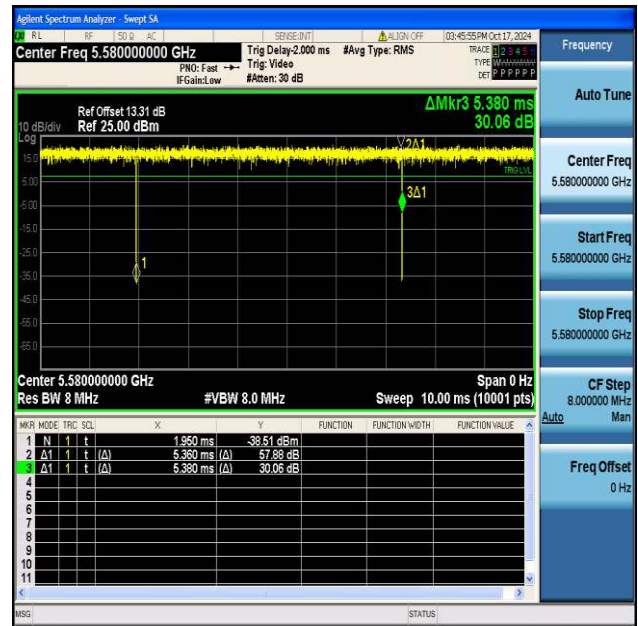
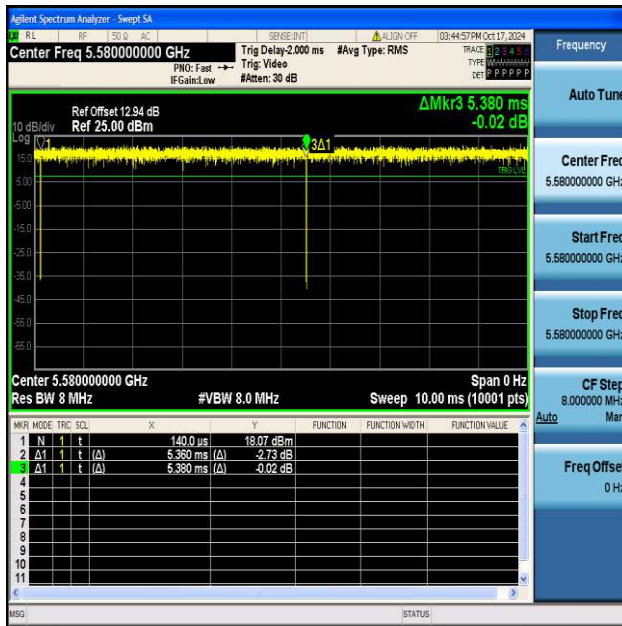


NTNV-11ac20MIMO-Ant1-5500



NTNV-11ac20MIMO-Ant2-5500





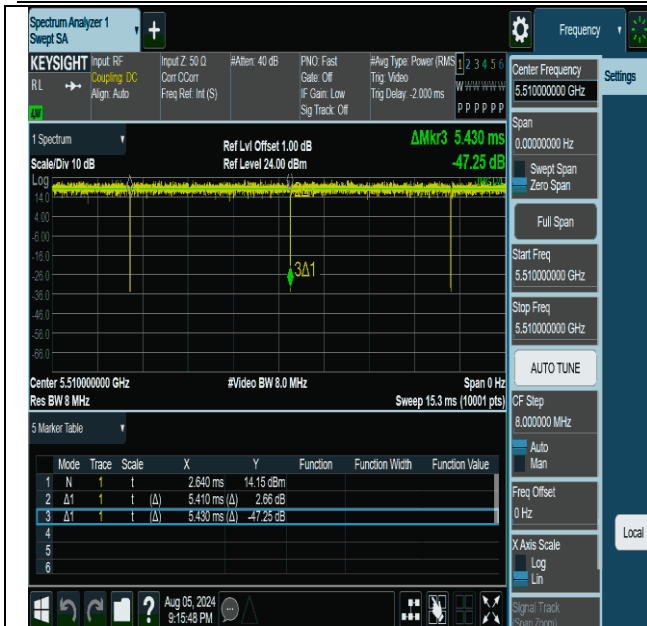
NTNV-11ac20MIMO-Ant1-5580



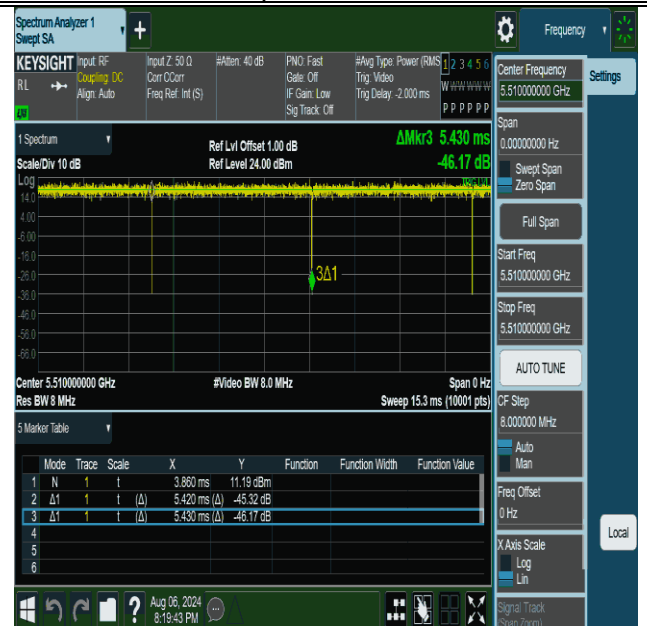
NTNV-11ac20MIMO-Ant1-5700



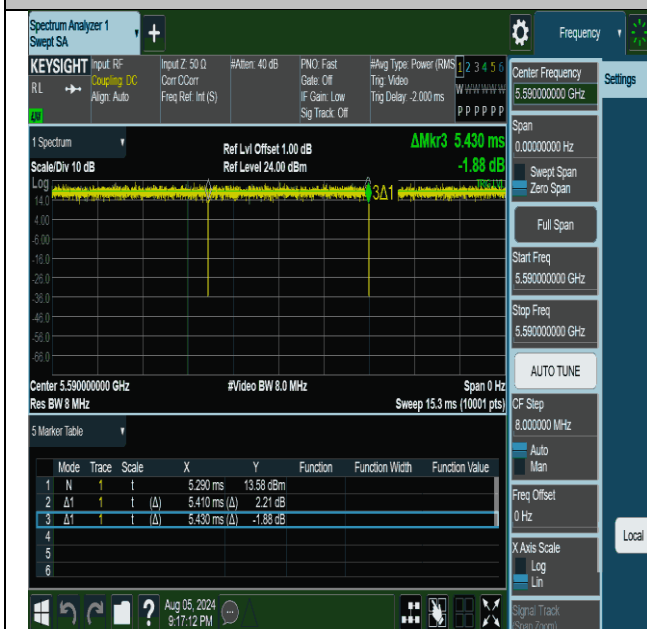
NTNV-11ac20MIMO-Ant2-5700



NTNV-11ac40MIMO-Ant1-5510



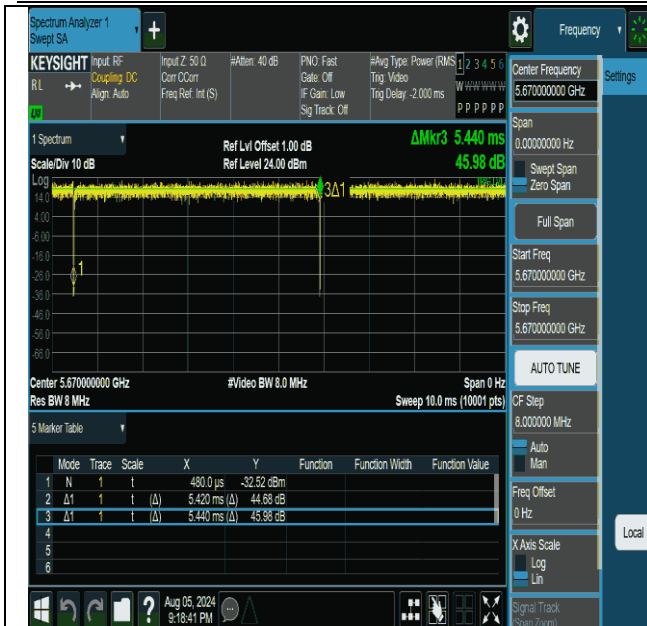
NTNV-11ac40MIMO-Ant2-5510



NTNV-11ac40MIMO-Ant1-5590



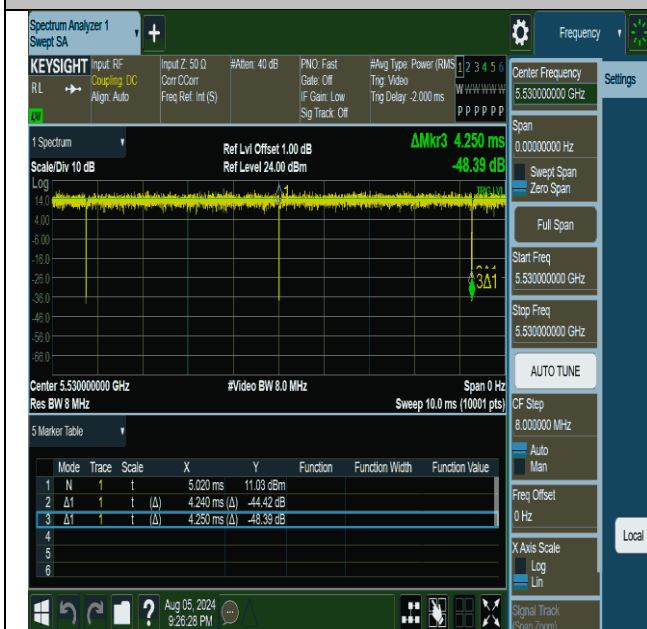
NTNV-11ac40MIMO-Ant2-5590



NTNV-11ac40MIMO-Ant1-5670



NTNV-11ac40MIMO-Ant2-5670

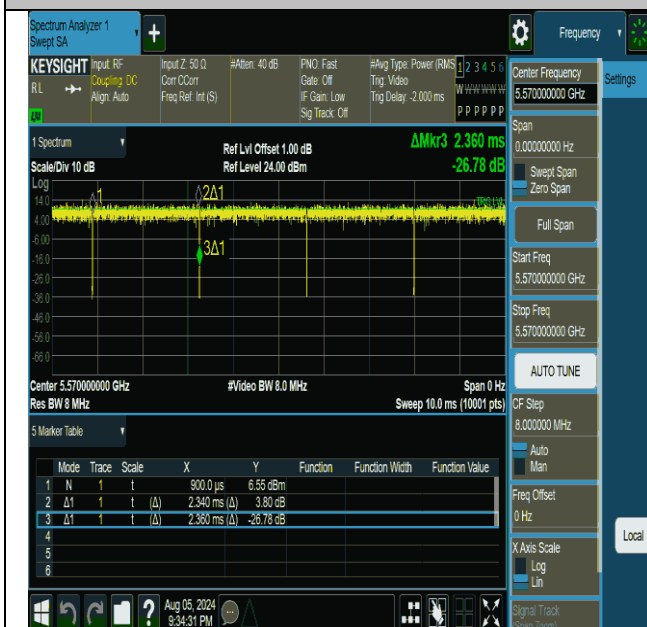


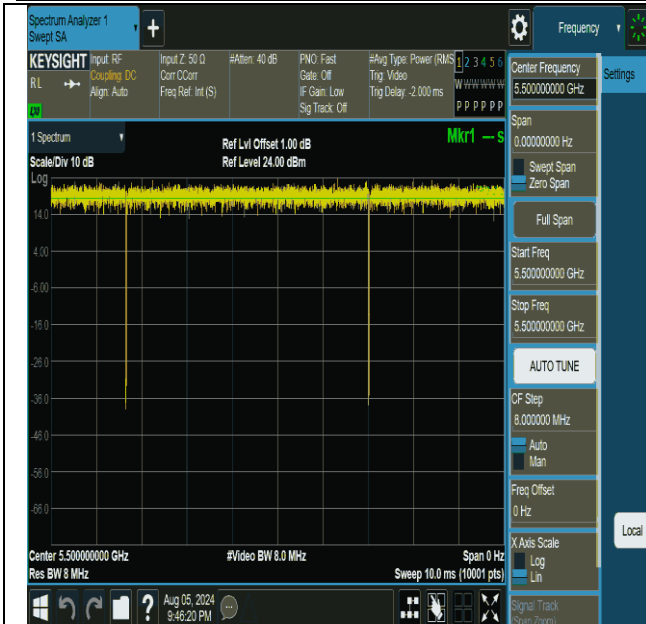
NTNV-11ac80MIMO-Ant1-5530



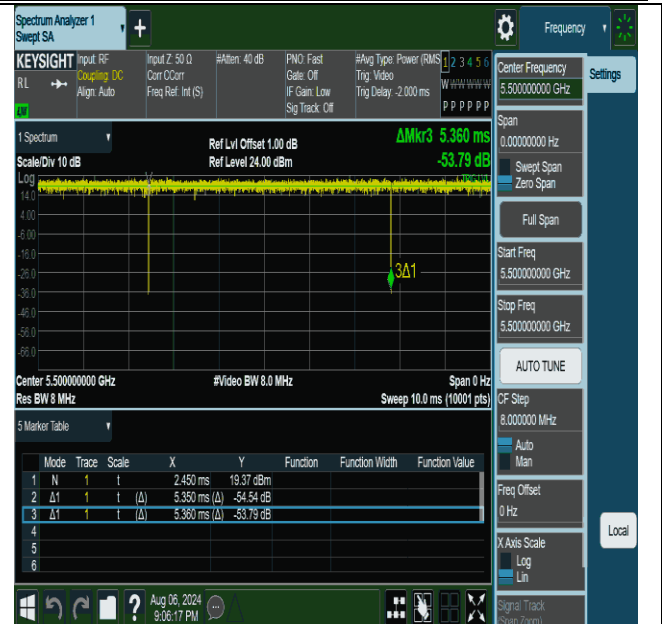
NTNV-11ac80MIMO-Ant2-5530



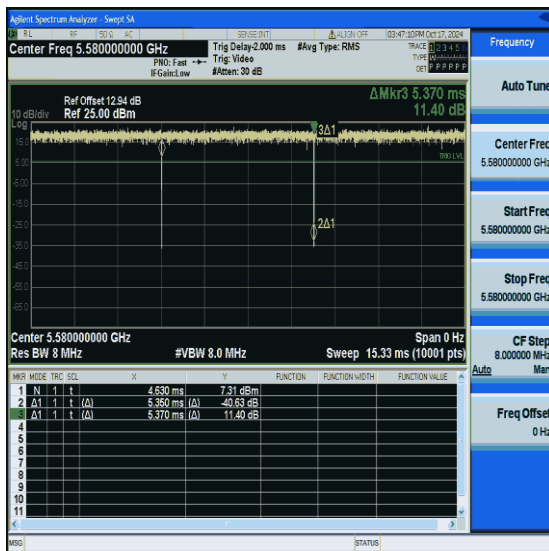




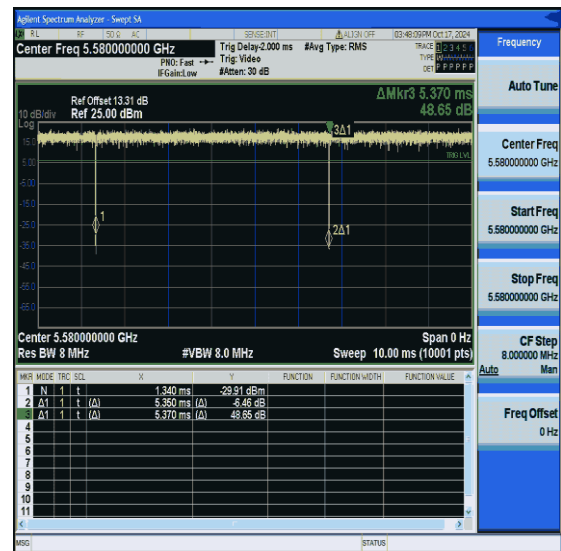
NTVN-11ax20MIMO-Ant1-5500



NTVN-11ax20MIMO-Ant2-5500



NTVN-11ax20MIMO-Ant1-5580



NTVN-11ax20MIMO-Ant2-5580



NTVN-11ax20MIMO-Ant1-5700



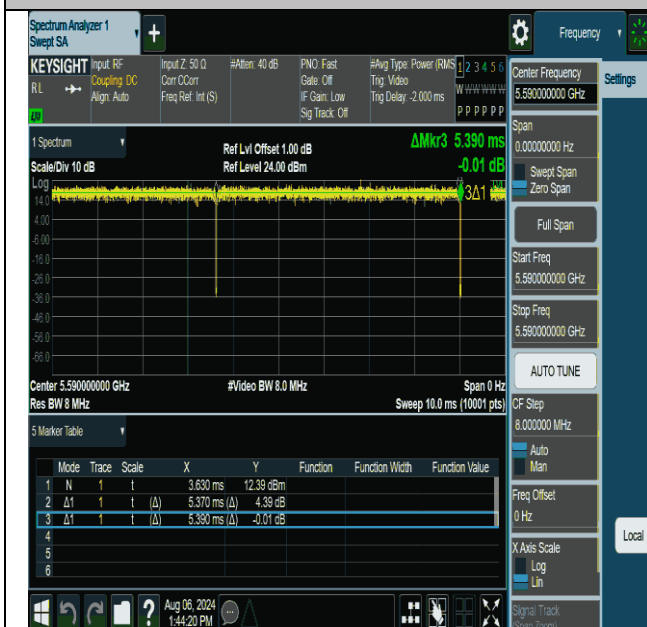
NTVN-11ax20MIMO-Ant2-5700



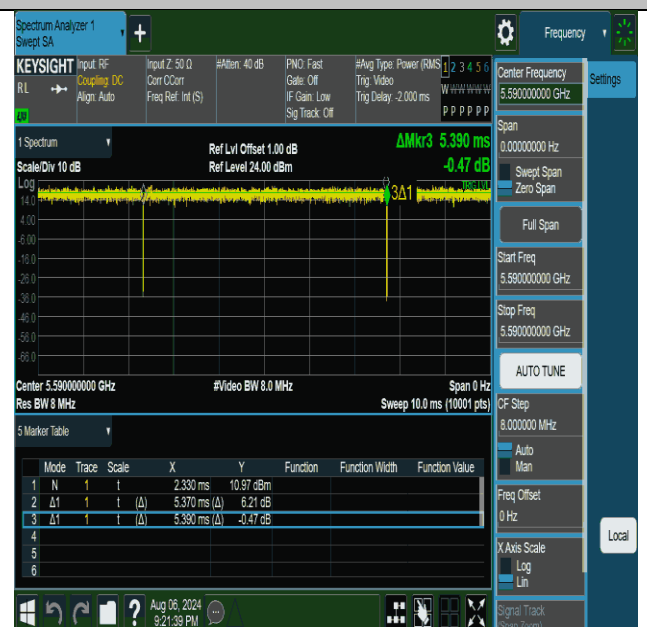
NTVN-11ax40MIMO-Ant1-5510



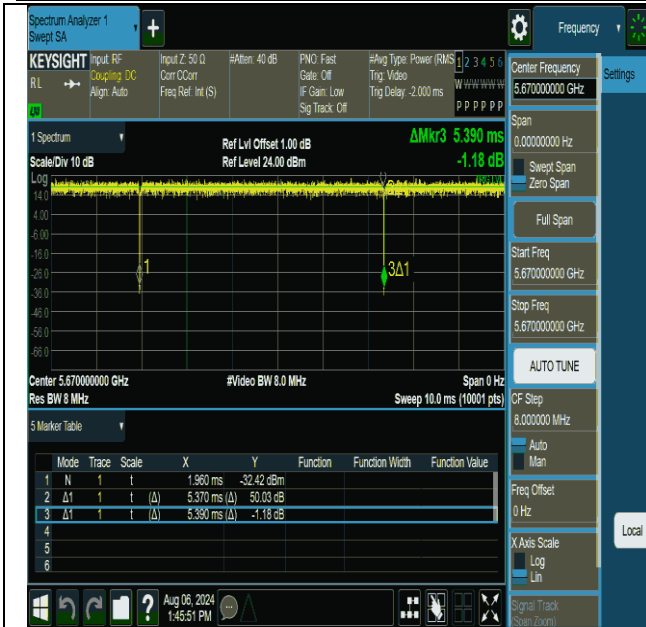
NTVN-11ax40MIMO-Ant2-5510

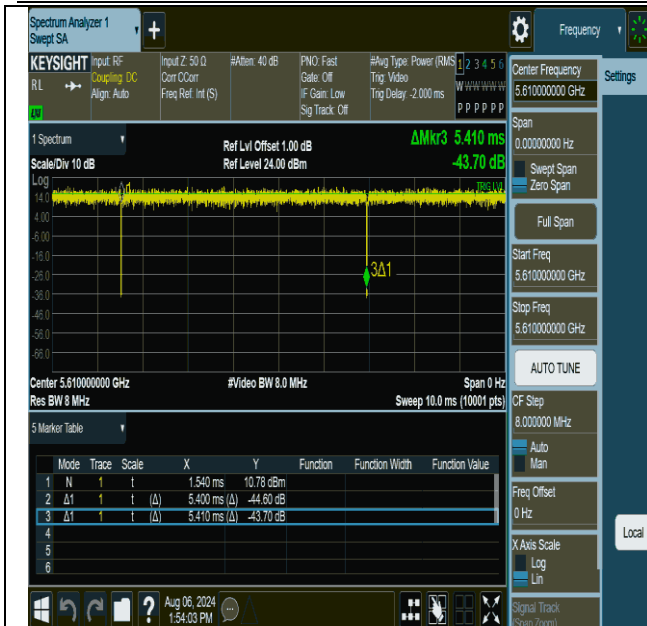


NTVN-11ax40MIMO-Ant1-5590



NTVN-11ax40MIMO-Ant2-5590





NTNV-11ax80MIMO-Ant1-5610



NTNV-11ax80MIMO-Ant2-5610



NTNV-11ax160MIMO-Ant1-5570



NTNV-11ax160MIMO-Ant2-5570

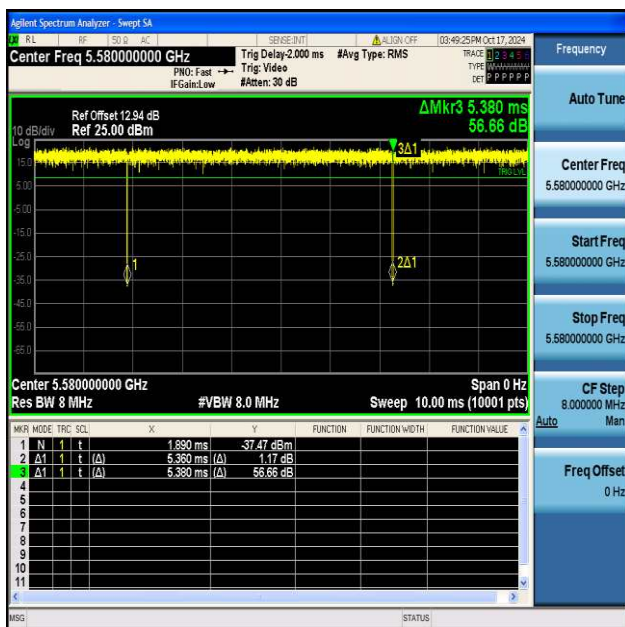




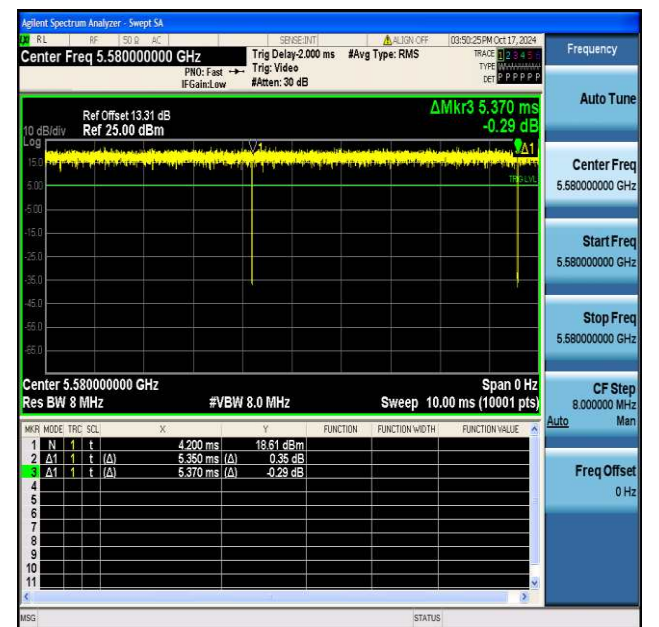
NTNV-11be20MIMO-Ant1-5500



NTNV-11be20MIMO-Ant2-5500



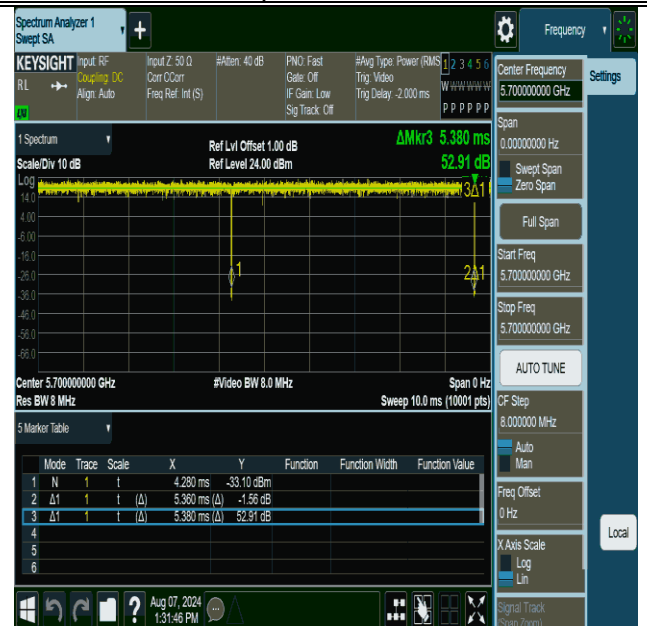
NTNV-11be20MIMO-Ant1-5580



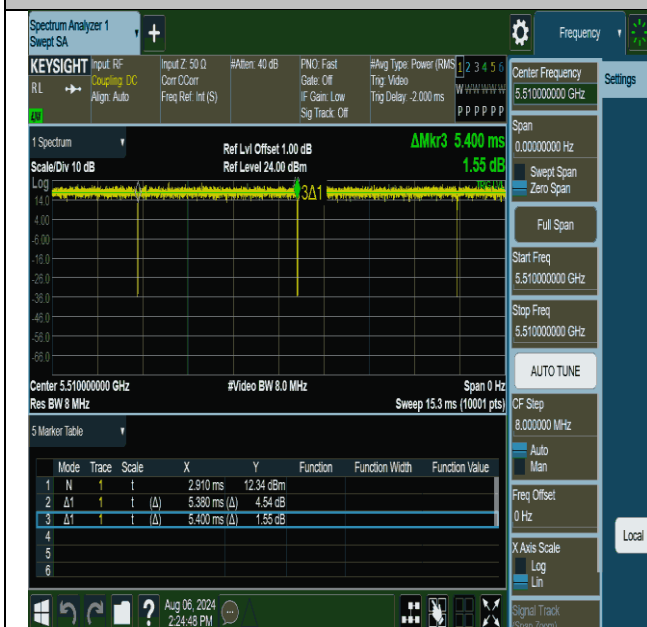
NTNV-11be20MIMO-Ant2-5580



NTNV-11be20MIMO-Ant1-5700



NTNV-11be20MIMO-Ant2-5700



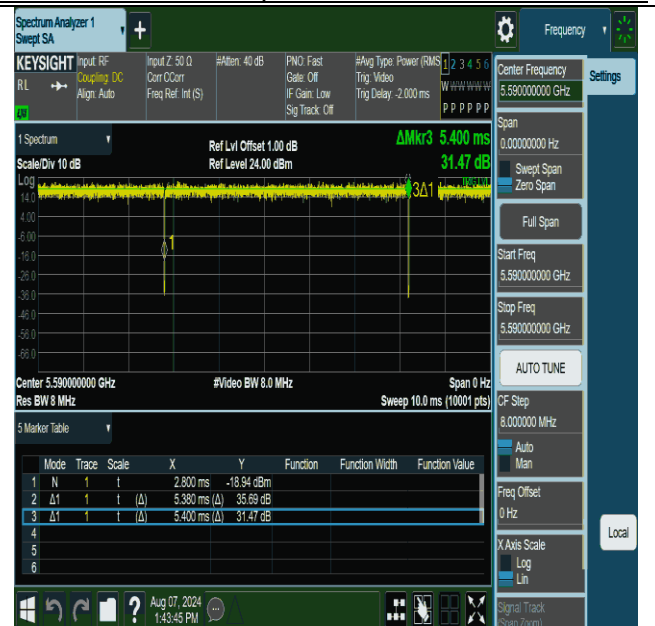
NTNV-11be40MIMO-Ant1-5510



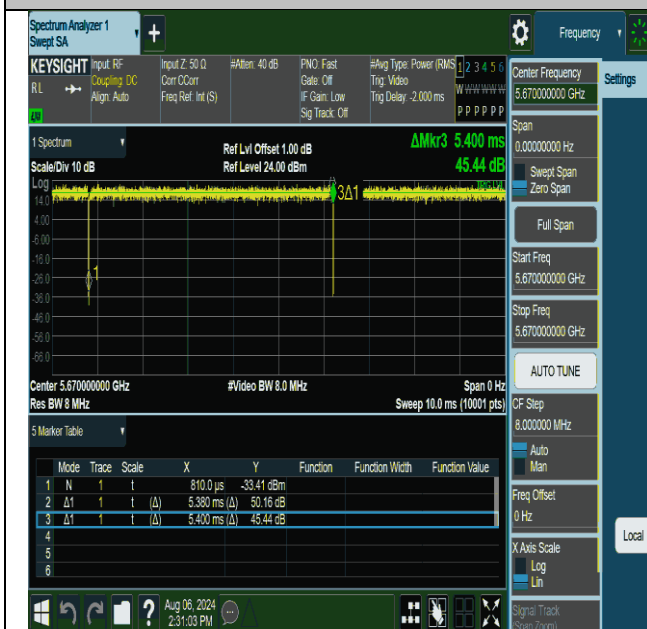
NTNV-11be40MIMO-Ant2-5510



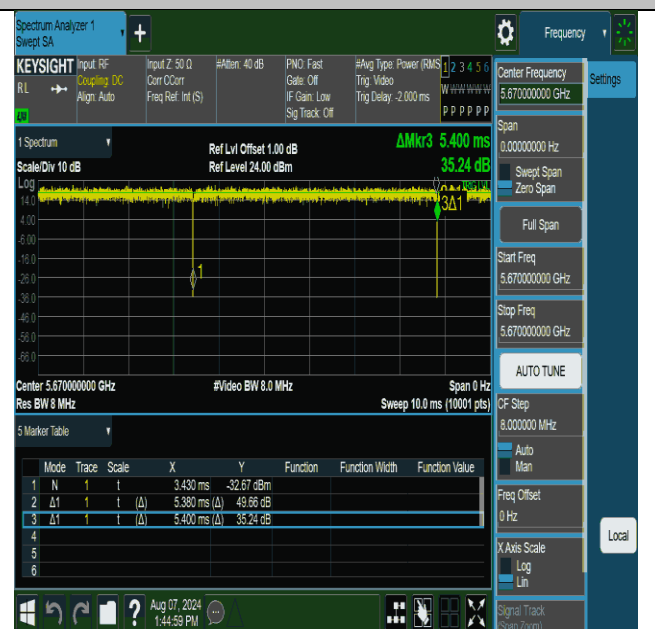
NTNV-11be40MIMO-Ant1-5590



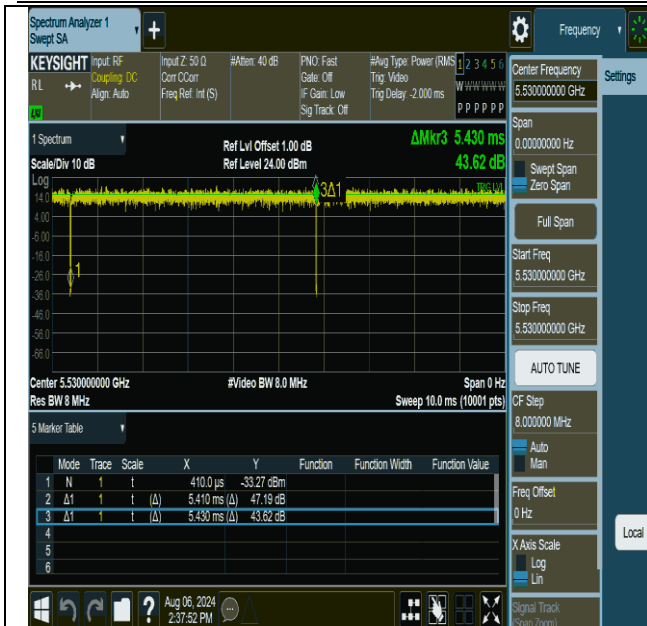
NTNV-11be40MIMO-Ant2-5590



NTNV-11be40MIMO-Ant1-5670



NTNV-11be40MIMO-Ant2-5670



NTVN-11be80MIMO-Ant1-5530



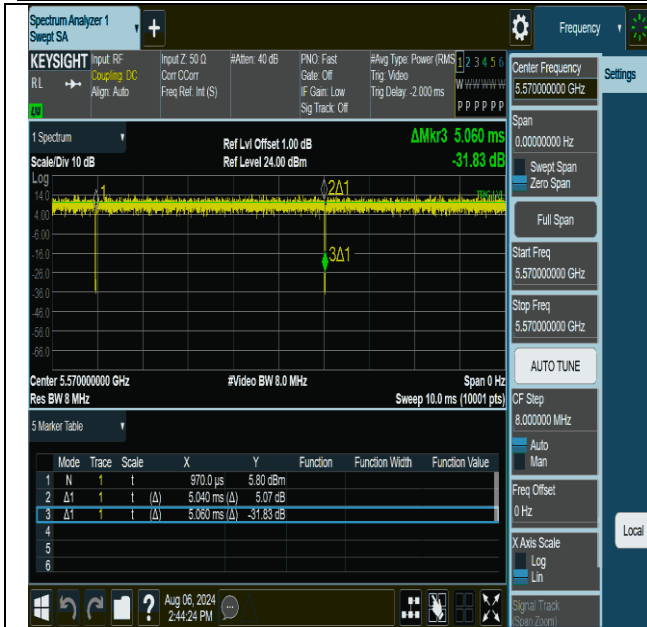
NTVN-11be80MIMO-Ant2-5530



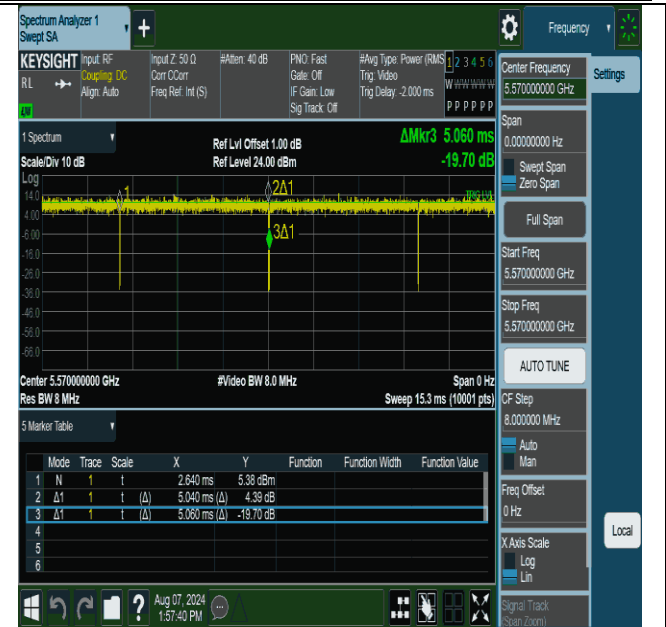
NTVN-11be80MIMO-Ant1-5610



NTVN-11be80MIMO-Ant2-5610



NTVN-11be160MIMO-Ant1-5570



NTVN-11be160MIMO-Ant2-5570



**Maximum conducted output power****Test Result**

TestMode	Antenna	Frequency[MHz]	Result [dBm]	Limit [dBm]	Verdict
11a-CDD	Ant1	5500	15.125	≤23.98	PASS
11a-CDD	Ant2	5500	15.26	≤23.98	PASS
11a-CDD	total	5500	18.203	≤23.98	PASS
11a-CDD	Ant1	5580	15.313	≤23.98	PASS
11a-CDD	Ant2	5580	14.876	≤23.98	PASS
11a-CDD	total	5580	18.110	≤23.98	PASS
11a-CDD	Ant1	5700	13.801	≤23.98	PASS
11a-CDD	Ant2	5700	13.714	≤23.98	PASS
11a-CDD	total	5700	16.768	≤23.98	PASS
11n20MIMO	Ant1	5500	14.406	≤23.98	PASS
11n20MIMO	Ant2	5500	14.501	≤23.98	PASS
11n20MIMO	total	5500	17.464	≤23.98	PASS
11n20MIMO	Ant1	5580	14.527	≤23.98	PASS
11n20MIMO	Ant2	5580	14.621	≤23.98	PASS
11n20MIMO	total	5580	17.585	≤23.98	PASS
11n20MIMO	Ant1	5700	14.226	≤23.98	PASS
11n20MIMO	Ant2	5700	13.711	≤23.98	PASS
11n20MIMO	total	5700	16.986	≤23.98	PASS
11n40MIMO	Ant1	5510	17.229	≤23.98	PASS
11n40MIMO	Ant2	5510	17.222	≤23.98	PASS
11n40MIMO	total	5510	20.236	≤23.98	PASS
11n40MIMO	Ant1	5590	16.977	≤23.98	PASS
11n40MIMO	Ant2	5590	17.095	≤23.98	PASS
11n40MIMO	total	5590	20.047	≤23.98	PASS
11n40MIMO	Ant1	5670	17.205	≤23.98	PASS
11n40MIMO	Ant2	5670	17.096	≤23.98	PASS
11n40MIMO	total	5670	20.161	≤23.98	PASS
11ac20MIMO	Ant1	5500	14.519	≤23.98	PASS
11ac20MIMO	Ant2	5500	14.547	≤23.98	PASS
11ac20MIMO	total	5500	17.543	≤23.98	PASS
11ac20MIMO	Ant1	5580	14.653	≤23.98	PASS
11ac20MIMO	Ant2	5580	14.446	≤23.98	PASS
11ac20MIMO	total	5580	17.561	≤23.98	PASS
11ac20MIMO	Ant1	5700	13.833	≤23.98	PASS
11ac20MIMO	Ant2	5700	13.761	≤23.98	PASS
11ac20MIMO	total	5700	16.807	≤23.98	PASS
11ac40MIMO	Ant1	5510	17.288	≤23.98	PASS
11ac40MIMO	Ant2	5510	17.24	≤23.98	PASS
11ac40MIMO	total	5510	20.274	≤23.98	PASS
11ac40MIMO	Ant1	5590	17.083	≤23.98	PASS
11ac40MIMO	Ant2	5590	17.074	≤23.98	PASS

11ac40MIMO	total	5590	20.089	≤23.98	PASS
11ac40MIMO	Ant1	5670	17.195	≤23.98	PASS
11ac40MIMO	Ant2	5670	17.455	≤23.98	PASS
11ac40MIMO	total	5670	20.337	≤23.98	PASS
11ac80MIMO	Ant1	5530	16.906	≤23.98	PASS
11ac80MIMO	Ant2	5530	16.716	≤23.98	PASS
11ac80MIMO	total	5530	19.822	≤23.98	PASS
11ac80MIMO	Ant1	5610	16.812	≤23.98	PASS
11ac80MIMO	Ant2	5610	16.707	≤23.98	PASS
11ac80MIMO	total	5610	19.770	≤23.98	PASS
11ac160MIMO	Ant1	5570	15.937	≤23.98	PASS
11ac160MIMO	Ant2	5570	15.829	≤23.98	PASS
11ac160MIMO	total	5570	18.894	≤23.98	PASS
11ax20MIMO	Ant1	5500	15.165	≤23.98	PASS
11ax20MIMO	Ant2	5500	15.313	≤23.98	PASS
11ax20MIMO	total	5500	18.250	≤23.98	PASS
11ax20MIMO	Ant1	5580	15.129	≤23.98	PASS
11ax20MIMO	Ant2	5580	15.211	≤23.98	PASS
11ax20MIMO	total	5580	18.180	≤23.98	PASS
11ax20MIMO	Ant1	5700	14.443	≤23.98	PASS
11ax20MIMO	Ant2	5700	14.442	≤23.98	PASS
11ax20MIMO	total	5700	17.453	≤23.98	PASS
11ax40MIMO	Ant1	5510	17.432	≤23.98	PASS
11ax40MIMO	Ant2	5510	17.321	≤23.98	PASS
11ax40MIMO	total	5510	20.387	≤23.98	PASS
11ax40MIMO	Ant1	5590	17.104	≤23.98	PASS
11ax40MIMO	Ant2	5590	17.295	≤23.98	PASS
11ax40MIMO	total	5590	20.211	≤23.98	PASS
11ax40MIMO	Ant1	5670	17.333	≤23.98	PASS
11ax40MIMO	Ant2	5670	17.328	≤23.98	PASS
11ax40MIMO	total	5670	20.341	≤23.98	PASS
11ax80MIMO	Ant1	5530	16.588	≤23.98	PASS
11ax80MIMO	Ant2	5530	16.422	≤23.98	PASS
11ax80MIMO	total	5530	19.516	≤23.98	PASS
11ax80MIMO	Ant1	5610	16.541	≤23.98	PASS
11ax80MIMO	Ant2	5610	16.591	≤23.98	PASS
11ax80MIMO	total	5610	19.576	≤23.98	PASS
11ax160MIMO	Ant1	5570	15.957	≤23.98	PASS
11ax160MIMO	Ant2	5570	15.771	≤23.98	PASS
11ax160MIMO	total	5570	18.875	≤23.98	PASS
11be20MIMO	Ant1	5500	15.242	≤23.98	PASS
11be20MIMO	Ant2	5500	15.199	≤23.98	PASS
11be20MIMO	total	5500	18.231	≤23.98	PASS
11be20MIMO	Ant1	5580	15.430	≤23.98	PASS
11be20MIMO	Ant2	5580	15.254	≤23.98	PASS
11be20MIMO	total	5580	18.353	≤23.98	PASS

11be20MIMO	Ant1	5700	14.536	≤23.98	PASS
11be20MIMO	Ant2	5700	14.447	≤23.98	PASS
11be20MIMO	total	5700	17.502	≤23.98	PASS
11be40MIMO	Ant1	5510	16.839	≤23.98	PASS
11be40MIMO	Ant2	5510	17.126	≤23.98	PASS
11be40MIMO	total	5510	19.995	≤23.98	PASS
11be40MIMO	Ant1	5590	17.014	≤23.98	PASS
11be40MIMO	Ant2	5590	17.047	≤23.98	PASS
11be40MIMO	total	5590	20.041	≤23.98	PASS
11be40MIMO	Ant1	5670	17.146	≤23.98	PASS
11be40MIMO	Ant2	5670	17.135	≤23.98	PASS
11be40MIMO	total	5670	20.151	≤23.98	PASS
11be80MIMO	Ant1	5530	14.875	≤23.98	PASS
11be80MIMO	Ant2	5530	14.723	≤23.98	PASS
11be80MIMO	total	5530	17.810	≤23.98	PASS
11be80MIMO	Ant1	5610	16.810	≤23.98	PASS
11be80MIMO	Ant2	5610	16.664	≤23.98	PASS
11be80MIMO	total	5610	19.748	≤23.98	PASS
11be160MIMO	Ant1	5570	15.294	≤23.98	PASS
11be160MIMO	Ant2	5570	15.012	≤23.98	PASS
11be160MIMO	total	5570	18.166	≤23.98	PASS

## Test Result for AX Part RU\_Trigger-Based

Test Mode	ANT	Freq. [MHz]	Ru Size	Ru Index	Result [dBm]	Limit [dBm]	Verdict
11be20MIMO	Ant1	5500	26Tone	RU0	7.712	≤23.98	PASS
11be20MIMO	Ant2	5500	26Tone	RU0	7.672	≤23.98	PASS
11be20MIMO	total	5500	26Tone	RU0	10.70	≤23.98	PASS
11be20MIMO	Ant1	5500	26Tone	RU8	7.629	≤23.98	PASS
11be20MIMO	Ant2	5500	26Tone	RU8	7.685	≤23.98	PASS
11be20MIMO	total	5500	26Tone	RU8	10.67	≤23.98	PASS
11be20MIMO	Ant1	5500	52Tone	RU37	11.122	≤23.98	PASS
11be20MIMO	Ant2	5500	52Tone	RU37	11.117	≤23.98	PASS
11be20MIMO	total	5500	52Tone	RU37	14.13	≤23.98	PASS
11be20MIMO	Ant1	5500	52Tone	RU40	11.176	≤23.98	PASS
11be20MIMO	Ant2	5500	52Tone	RU40	11.066	≤23.98	PASS
11be20MIMO	total	5500	52Tone	RU40	14.13	≤23.98	PASS
11be20MIMO	Ant1	5500	106Tone	RU53	12.821	≤23.98	PASS
11be20MIMO	Ant2	5500	106Tone	RU53	12.934	≤23.98	PASS
11be20MIMO	total	5500	106Tone	RU53	15.89	≤23.98	PASS
11be20MIMO	Ant1	5500	106Tone	RU54	12.896	≤23.98	PASS
11be20MIMO	Ant2	5500	106Tone	RU54	12.813	≤23.98	PASS
11be20MIMO	total	5500	106Tone	RU54	15.86	≤23.98	PASS
11be20MIMO	Ant1	5600	26Tone	RU0	7.569	≤23.98	PASS
11be20MIMO	Ant2	5600	26Tone	RU0	7.321	≤23.98	PASS
11be20MIMO	total	5600	26Tone	RU0	10.46	≤23.98	PASS
11be20MIMO	Ant1	5600	26Tone	RU8	7.603	≤23.98	PASS
11be20MIMO	Ant2	5600	26Tone	RU8	7.208	≤23.98	PASS
11be20MIMO	total	5600	26Tone	RU8	10.42	≤23.98	PASS
11be20MIMO	Ant1	5600	52Tone	RU37	10.542	≤23.98	PASS
11be20MIMO	Ant2	5600	52Tone	RU37	9.935	≤23.98	PASS
11be20MIMO	total	5600	52Tone	RU37	13.26	≤23.98	PASS
11be20MIMO	Ant1	5600	52Tone	RU40	10.542	≤23.98	PASS
11be20MIMO	Ant2	5600	52Tone	RU40	9.845	≤23.98	PASS
11be20MIMO	total	5600	52Tone	RU40	13.22	≤23.98	PASS
11be20MIMO	Ant1	5600	106Tone	RU53	12.24	≤23.98	PASS
11be20MIMO	Ant2	5600	106Tone	RU53	11.766	≤23.98	PASS
11be20MIMO	total	5600	106Tone	RU53	15.02	≤23.98	PASS
11be20MIMO	Ant1	5600	106Tone	RU54	12.241	≤23.98	PASS
11be20MIMO	Ant2	5600	106Tone	RU54	11.772	≤23.98	PASS
11be20MIMO	total	5600	106Tone	RU54	15.02	≤23.98	PASS
11be20MIMO	Ant1	5700	26Tone	RU0	6.964	≤23.98	PASS
11be20MIMO	Ant2	5700	26Tone	RU0	7.023	≤23.98	PASS
11be20MIMO	total	5700	26Tone	RU0	10.00	≤23.98	PASS
11be20MIMO	Ant1	5700	26Tone	RU8	6.848	≤23.98	PASS
11be20MIMO	Ant2	5700	26Tone	RU8	6.87	≤23.98	PASS
11be20MIMO	total	5700	26Tone	RU8	9.87	≤23.98	PASS

11be20MIMO	Ant1	5700	52Tone	RU37	10.34	≤23.98	PASS
11be20MIMO	Ant2	5700	52Tone	RU37	10.404	≤23.98	PASS
11be20MIMO	total	5700	52Tone	RU37	13.38	≤23.98	PASS
11be20MIMO	Ant1	5700	52Tone	RU40	10.434	≤23.98	PASS
11be20MIMO	Ant2	5700	52Tone	RU40	10.14	≤23.98	PASS
11be20MIMO	total	5700	52Tone	RU40	13.30	≤23.98	PASS
11be20MIMO	Ant1	5700	106Tone	RU53	12.339	≤23.98	PASS
11be20MIMO	Ant2	5700	106Tone	RU53	11.997	≤23.98	PASS
11be20MIMO	total	5700	106Tone	RU53	15.18	≤23.98	PASS
11be20MIMO	Ant1	5700	106Tone	RU54	12.124	≤23.98	PASS
11be20MIMO	Ant2	5700	106Tone	RU54	11.842	≤23.98	PASS
11be20MIMO	total	5700	106Tone	RU54	15.00	≤23.98	PASS
11be40MIMO	Ant1	5510	242Tone	RU61	14.685	≤23.98	PASS
11be40MIMO	Ant2	5510	242Tone	RU61	14.577	≤23.98	PASS
11be40MIMO	total	5510	242Tone	RU61	17.64	≤23.98	PASS
11be40MIMO	Ant1	5510	242Tone	RU62	14.696	≤23.98	PASS
11be40MIMO	Ant2	5510	242Tone	RU62	14.379	≤23.98	PASS
11be40MIMO	total	5510	242Tone	RU62	17.55	≤23.98	PASS
11be40MIMO	Ant1	5590	242Tone	RU61	14.911	≤23.98	PASS
11be40MIMO	Ant2	5590	242Tone	RU61	14.527	≤23.98	PASS
11be40MIMO	total	5590	242Tone	RU61	17.73	≤23.98	PASS
11be40MIMO	Ant1	5590	242Tone	RU62	14.780	≤23.98	PASS
11be40MIMO	Ant2	5590	242Tone	RU62	14.332	≤23.98	PASS
11be40MIMO	total	5590	242Tone	RU62	17.57	≤23.98	PASS
11be40MIMO	Ant1	5670	242Tone	RU61	15.045	≤23.98	PASS
11be40MIMO	Ant2	5670	242Tone	RU61	14.416	≤23.98	PASS
11be40MIMO	total	5670	242Tone	RU61	17.75	≤23.98	PASS
11be40MIMO	Ant1	5670	242Tone	RU62	14.980	≤23.98	PASS
11be40MIMO	Ant2	5670	242Tone	RU62	14.271	≤23.98	PASS
11be40MIMO	total	5670	242Tone	RU62	17.65	≤23.98	PASS
11be80MIMO	Ant1	5530	484Tone	RU65	13.574	≤23.98	PASS
11be80MIMO	Ant2	5530	484Tone	RU65	12.977	≤23.98	PASS
11be80MIMO	total	5530	484Tone	RU65	16.30	≤23.98	PASS
11be80MIMO	Ant1	5530	484Tone	RU66	14.912	≤23.98	PASS
11be80MIMO	Ant2	5530	484Tone	RU66	14.887	≤23.98	PASS
11be80MIMO	total	5530	484Tone	RU66	17.91	≤23.98	PASS
11be80MIMO	Ant1	5610	484Tone	RU65	15.273	≤23.98	PASS
11be80MIMO	Ant2	5610	484Tone	RU65	14.992	≤23.98	PASS
11be80MIMO	total	5610	484Tone	RU65	18.15	≤23.98	PASS
11be80MIMO	Ant1	5610	484Tone	RU66	15.214	≤23.98	PASS
11be80MIMO	Ant2	5610	484Tone	RU66	14.91	≤23.98	PASS
11be80MIMO	total	5610	484Tone	RU66	18.07	≤23.98	PASS
11be160MIMO	Ant1	5570	996Tone	RU67	13.4	≤23.98	PASS
11be160MIMO	Ant2	5570	996Tone	RU67	12.872	≤23.98	PASS
11be160MIMO	total	5570	996Tone	RU67	16.15	≤23.98	PASS
11be160MIMO	Ant1	5570	996Tone	RU68	13.396	≤23.98	PASS



11be160MIMO	Ant2	5570	996Tone	RU68	12.702	≤23.98	PASS
11be160MIMO	total	5570	996Tone	RU68	16.07	≤23.98	PASS

**Maximum power spectral density****Test Result**

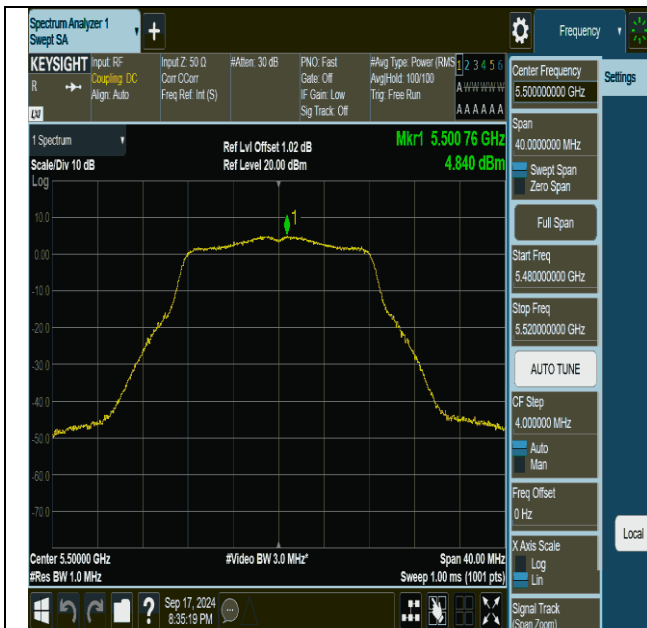
TestMode	Antenna	Frequency[MHz]	Result [dBm/MHz]	Gain [dBi]	EIRP [dBm/MHz]	Limit [dBm/MHz]	Verdict
11a-CDD	Ant1	5500	4.84	-1.20	3.64	≤11.00	PASS
11a-CDD	Ant2	5500	5.59	-1.20	4.39	≤11.00	PASS
11a-CDD	total	5500	8.24	1.81	10.05	≤11.00	PASS
11a-CDD	Ant1	5580	6.11	-1.20	4.91	≤11.00	PASS
11a-CDD	Ant2	5580	6.20	-1.20	5	≤11.00	PASS
11a-CDD	total	5580	9.17	1.81	10.98	≤11.00	PASS
11a-CDD	Ant1	5700	5.41	-1.20	4.21	≤11.00	PASS
11a-CDD	Ant2	5700	5.18	-1.20	3.98	≤11.00	PASS
11a-CDD	total	5700	8.31	1.81	10.12	≤11.00	PASS
11n20MIMO	Ant1	5500	4.40	-1.20	3.2	≤11.00	PASS
11n20MIMO	Ant2	5500	4.31	-1.20	3.11	≤11.00	PASS
11n20MIMO	total	5500	7.37	1.81	9.18	≤11.00	PASS
11n20MIMO	Ant1	5580	5.56	-1.20	4.36	≤11.00	PASS
11n20MIMO	Ant2	5580	5.47	-1.20	4.27	≤11.00	PASS
11n20MIMO	total	5580	8.53	1.81	10.34	≤11.00	PASS
11n20MIMO	Ant1	5700	5.01	-1.20	3.81	≤11.00	PASS
11n20MIMO	Ant2	5700	4.90	-1.20	3.7	≤11.00	PASS
11n20MIMO	total	5700	7.97	1.81	9.78	≤11.00	PASS
11n40MIMO	Ant1	5510	4.22	-1.20	3.02	≤11.00	PASS
11n40MIMO	Ant2	5510	4.59	-1.20	3.39	≤11.00	PASS
11n40MIMO	total	5510	7.42	1.81	9.23	≤11.00	PASS
11n40MIMO	Ant1	5590	4.31	-1.20	3.11	≤11.00	PASS
11n40MIMO	Ant2	5590	4.85	-1.20	3.65	≤11.00	PASS
11n40MIMO	total	5590	7.60	1.81	9.41	≤11.00	PASS
11n40MIMO	Ant1	5670	4.36	-1.20	3.16	≤11.00	PASS
11n40MIMO	Ant2	5670	4.47	-1.20	3.27	≤11.00	PASS
11n40MIMO	total	5670	7.43	1.81	9.24	≤11.00	PASS
11ac20MIMO	Ant1	5500	4.36	-1.20	3.16	≤11.00	PASS
11ac20MIMO	Ant2	5500	4.54	-1.20	3.34	≤11.00	PASS
11ac20MIMO	total	5500	7.46	1.81	9.27	≤11.00	PASS
11ac20MIMO	Ant1	5580	5.56	-1.20	4.36	≤11.00	PASS
11ac20MIMO	Ant2	5580	5.38	-1.20	4.18	≤11.00	PASS
11ac20MIMO	total	5580	8.48	1.81	10.29	≤11.00	PASS
11ac20MIMO	Ant1	5700	5.02	-1.20	3.82	≤11.00	PASS
11ac20MIMO	Ant2	5700	4.95	-1.20	3.75	≤11.00	PASS
11ac20MIMO	total	5700	8.00	1.81	9.81	≤11.00	PASS
11ac40MIMO	Ant1	5510	4.20	-1.20	3	≤11.00	PASS
11ac40MIMO	Ant2	5510	4.53	-1.20	3.33	≤11.00	PASS
11ac40MIMO	total	5510	7.38	1.81	9.19	≤11.00	PASS
11ac40MIMO	Ant1	5590	4.34	-1.20	3.14	≤11.00	PASS

11ac40MIMO	Ant2	5590	4.91	-1.20	3.71	≤11.00	PASS
11ac40MIMO	total	5590	7.64	1.81	9.45	≤11.00	PASS
11ac40MIMO	Ant1	5670	4.36	-1.20	3.16	≤11.00	PASS
11ac40MIMO	Ant2	5670	4.43	-1.20	3.23	≤11.00	PASS
11ac40MIMO	total	5670	7.41	1.81	9.22	≤11.00	PASS
11ac80MIMO	Ant1	5530	0.57	-1.20	-0.63	≤11.00	PASS
11ac80MIMO	Ant2	5530	0.55	-1.20	-0.65	≤11.00	PASS
11ac80MIMO	total	5530	3.57	1.81	5.38	≤11.00	PASS
11ac80MIMO	Ant1	5610	0.82	-1.20	-0.38	≤11.00	PASS
11ac80MIMO	Ant2	5610	1.19	-1.20	-0.01	≤11.00	PASS
11ac80MIMO	total	5610	4.02	1.81	5.83	≤11.00	PASS
11ac160MIMO	Ant1	5570	-3.43	-1.20	-4.63	≤11.00	PASS
11ac160MIMO	Ant2	5570	-3.45	-1.20	-4.65	≤11.00	PASS
11ac160MIMO	total	5570	-0.43	1.81	1.38	≤11.00	PASS
11ax20MIMO	Ant1	5500	4.67	-1.20	3.47	≤11.00	PASS
11ax20MIMO	Ant2	5500	5.17	-1.20	3.97	≤11.00	PASS
11ax20MIMO	total	5500	7.94	1.81	9.75	≤11.00	PASS
11ax20MIMO	Ant1	5580	6.01	-1.20	4.81	≤11.00	PASS
11ax20MIMO	Ant2	5580	5.89	-1.20	4.69	≤11.00	PASS
11ax20MIMO	total	5580	8.96	1.81	10.77	≤11.00	PASS
11ax20MIMO	Ant1	5700	5.58	-1.20	4.38	≤11.00	PASS
11ax20MIMO	Ant2	5700	5.32	-1.20	4.12	≤11.00	PASS
11ax20MIMO	total	5700	8.46	1.81	10.27	≤11.00	PASS
11ax40MIMO	Ant1	5510	4.48	-1.20	3.28	≤11.00	PASS
11ax40MIMO	Ant2	5510	4.68	-1.20	3.48	≤11.00	PASS
11ax40MIMO	total	5510	7.59	1.81	9.4	≤11.00	PASS
11ax40MIMO	Ant1	5590	4.65	-1.20	3.45	≤11.00	PASS
11ax40MIMO	Ant2	5590	4.49	-1.20	3.29	≤11.00	PASS
11ax40MIMO	total	5590	7.58	1.81	9.39	≤11.00	PASS
11ax40MIMO	Ant1	5670	4.62	-1.20	3.42	≤11.00	PASS
11ax40MIMO	Ant2	5670	4.57	-1.20	3.37	≤11.00	PASS
11ax40MIMO	total	5670	7.61	1.81	9.42	≤11.00	PASS
11ax80MIMO	Ant1	5530	-0.19	-1.20	-1.39	≤11.00	PASS
11ax80MIMO	Ant2	5530	0.23	-1.20	-0.97	≤11.00	PASS
11ax80MIMO	total	5530	3.04	1.81	4.85	≤11.00	PASS
11ax80MIMO	Ant1	5610	0.46	-1.20	-0.74	≤11.00	PASS
11ax80MIMO	Ant2	5610	0.79	-1.20	-0.41	≤11.00	PASS
11ax80MIMO	total	5610	3.64	1.81	5.45	≤11.00	PASS
11ax160MIMO	Ant1	5570	-3.63	-1.20	-4.83	≤11.00	PASS
11ax160MIMO	Ant2	5570	-3.67	-1.20	-4.87	≤11.00	PASS
11ax160MIMO	total	5570	-0.64	1.81	1.17	≤11.00	PASS
11be20MIMO	Ant1	5500	4.75	-1.20	3.55	≤11.00	PASS
11be20MIMO	Ant2	5500	4.91	-1.20	3.71	≤11.00	PASS
11be20MIMO	total	5500	7.84	1.81	9.65	≤11.00	PASS
11be20MIMO	Ant1	5580	5.95	-1.20	4.75	≤11.00	PASS
11be20MIMO	Ant2	5580	5.91	-1.20	4.71	≤11.00	PASS

11be20MIMO	total	5580	8.94	1.81	10.75	≤11.00	PASS
11be20MIMO	Ant1	5700	5.81	-1.20	4.61	≤11.00	PASS
11be20MIMO	Ant2	5700	5.48	-1.20	4.28	≤11.00	PASS
11be20MIMO	total	5700	8.66	1.81	10.47	≤11.00	PASS
11be40MIMO	Ant1	5510	4.55	-1.20	3.35	≤11.00	PASS
11be40MIMO	Ant2	5510	3.99	-1.20	2.79	≤11.00	PASS
11be40MIMO	total	5510	7.29	1.81	9.1	≤11.00	PASS
11be40MIMO	Ant1	5590	4.47	-1.20	3.27	≤11.00	PASS
11be40MIMO	Ant2	5590	4.75	-1.20	3.55	≤11.00	PASS
11be40MIMO	total	5590	7.62	1.81	9.43	≤11.00	PASS
11be40MIMO	Ant1	5670	4.40	-1.20	3.2	≤11.00	PASS
11be40MIMO	Ant2	5670	4.39	-1.20	3.19	≤11.00	PASS
11be40MIMO	total	5670	7.41	1.81	9.22	≤11.00	PASS
11be80MIMO	Ant1	5530	0.10	-1.20	-1.1	≤11.00	PASS
11be80MIMO	Ant2	5530	-1.40	-1.20	-2.6	≤11.00	PASS
11be80MIMO	total	5530	2.42	1.81	4.23	≤11.00	PASS
11be80MIMO	Ant1	5610	0.71	-1.20	-0.49	≤11.00	PASS
11be80MIMO	Ant2	5610	0.91	-1.20	-0.29	≤11.00	PASS
11be80MIMO	total	5610	3.82	1.81	5.63	≤11.00	PASS
11be160MIMO	Ant1	5570	-3.02	-1.20	-4.22	≤11.00	PASS
11be160MIMO	Ant2	5570	-3.84	-1.20	-5.04	≤11.00	PASS
11be160MIMO	total	5570	-0.40	1.81	1.41	≤11.00	PASS

Note: 1.The Result and Limit Unit is dBm/500 kHz in the band 5.725–5.85 GHz.  
2.The Duty Cycle Factor and RBW Factor is compensated in the graph.

## Test Graphs



11a-CDD-Ant1-5500-PASS



11a-CDD-Ant2-5500-PASS

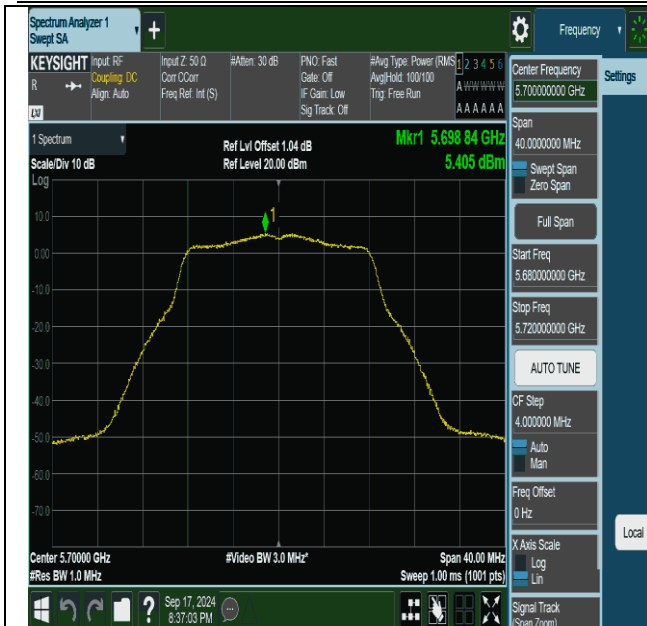


11a-CDD-Ant1-5580-PASS



11a-CDD-Ant2-5580-PASS





11a-CDD-Ant1-5700-PASS



11a-CDD-Ant2-5700-PASS



11n20MIMO-Ant1-5500-PASS



11n20MIMO-Ant2-5500-PASS



11n20MIMO-Ant1-5580-PASS

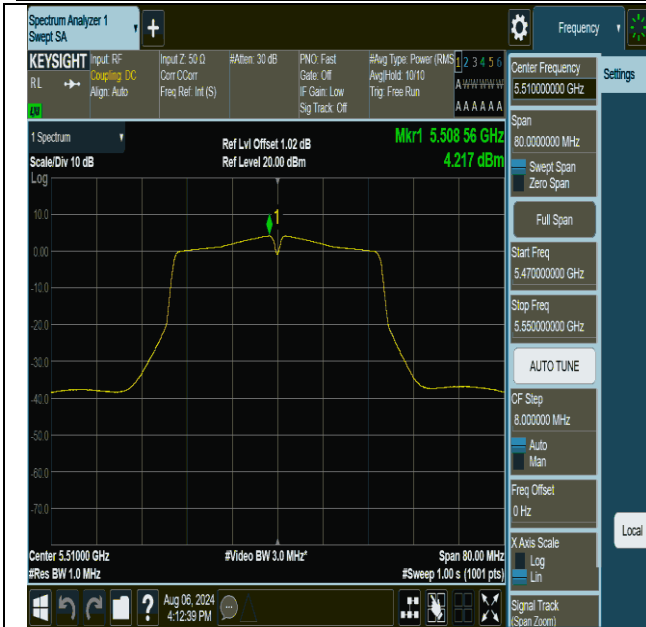


11n20MIMO-Ant1-5700-PASS

11n20MIMO-Ant2-5580-PASS



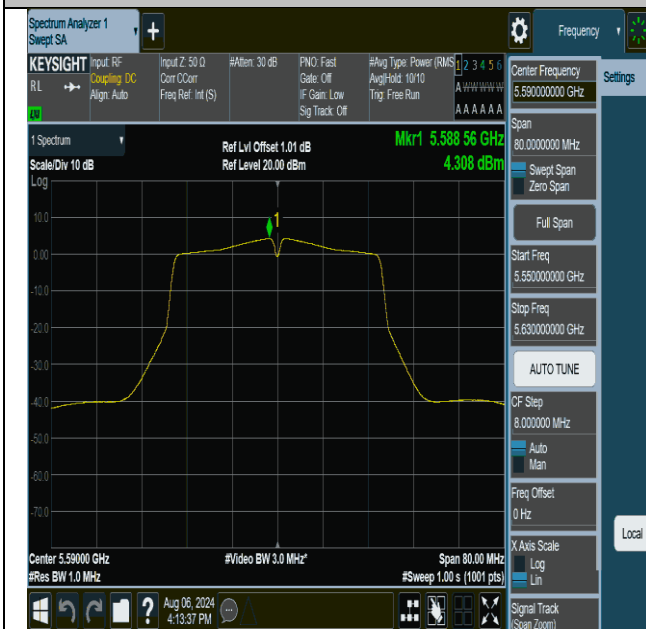
11n20MIMO-Ant2-5700-PASS



11n40MIMO-Ant1-5510-PASS



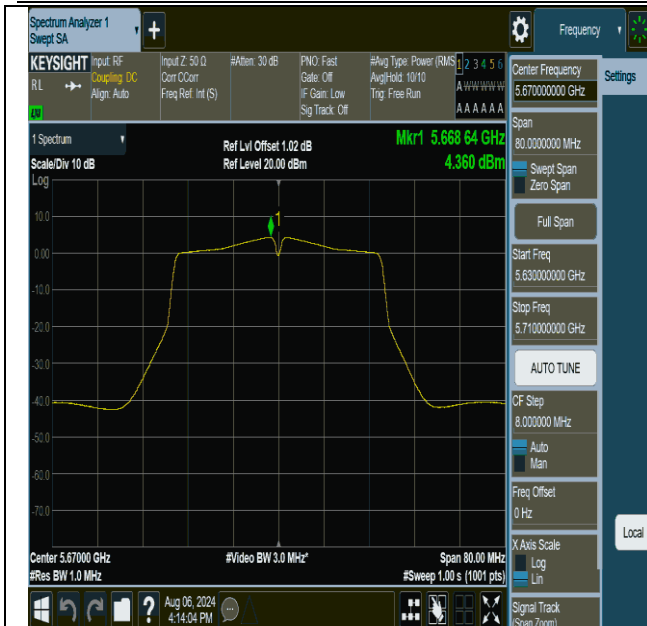
11n40MIMO-Ant2-5510-PASS



11n40MIMO-Ant1-5590-PASS



11n40MIMO-Ant2-5590-PASS



11n40MIMO-Ant1-5670-PASS



11n40MIMO-Ant2-5670-PASS



11ac20MIMO-Ant1-5500-PASS



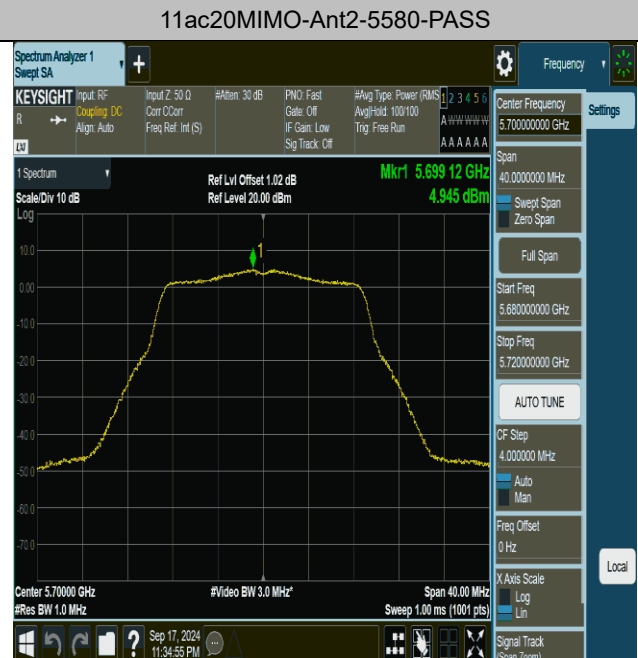
11ac20MIMO-Ant2-5500-PASS



11ac20MIMO-Ant1-5580-PASS



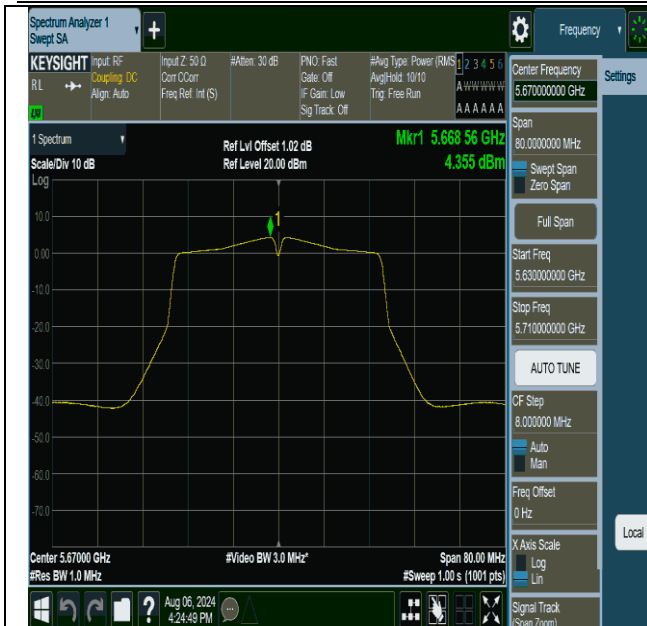
11ac20MIMO-Ant1-5700-PASS



11ac20MIMO-Ant2-5700-PASS







11ac40MIMO-Ant1-5670-PASS



11ac40MIMO-Ant2-5670-PASS



11ac80MIMO-Ant1-5530-PASS



11ac80MIMO-Ant2-5530-PASS



11ac80MIMO-Ant1-5610-PASS



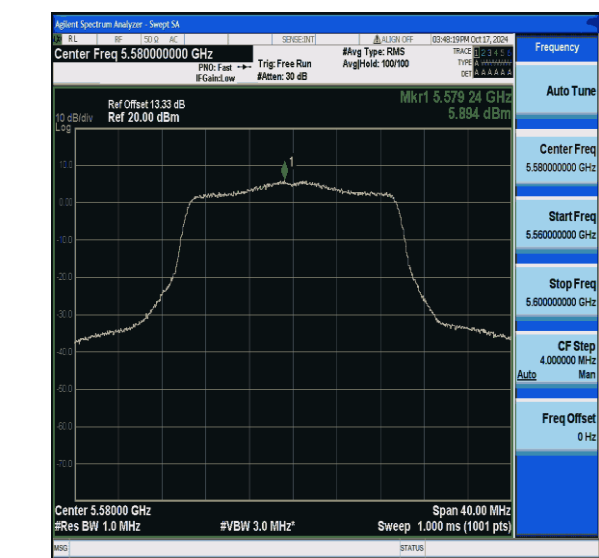
11ac80MIMO-Ant2-5610-PASS

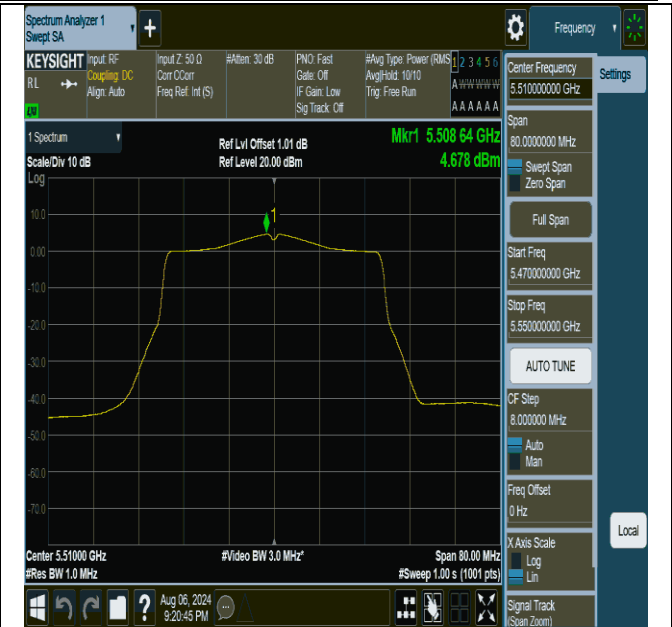
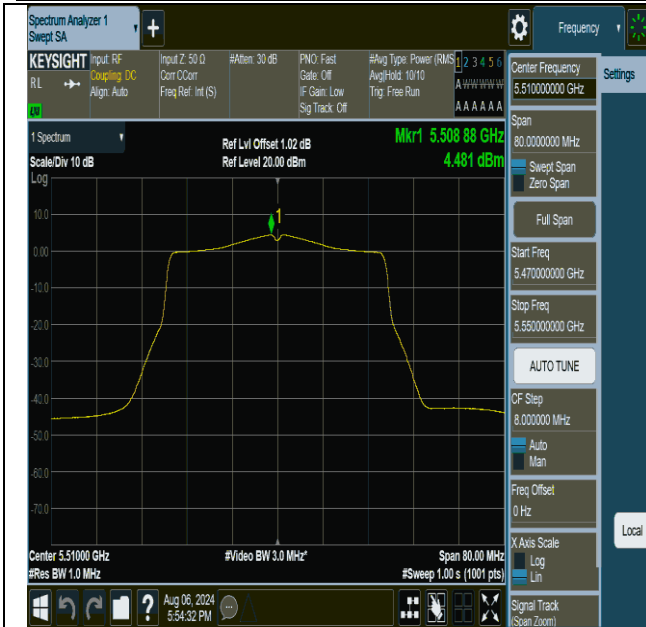


11ac160MIMO-Ant1-5570-PASS



11ac160MIMO-Ant2-5570-PASS









11ax80MIMO-Ant1-5610-PASS



11ax80MIMO-Ant2-5610-PASS



11ax160MIMO-Ant1-5570-PASS



11ax160MIMO-Ant2-5570-PASS





11be20MIMO-Ant1-5500-PASS



11be20MIMO-Ant2-5500-PASS



11be20MIMO-Ant1-5580-PASS



11be20MIMO-Ant2-5580-PASS



11be20MIMO-Ant1-5700-PASS



11be20MIMO-Ant2-5700-PASS



11be40MIMO-Ant1-5510-PASS



11be40MIMO-Ant2-5510-PASS