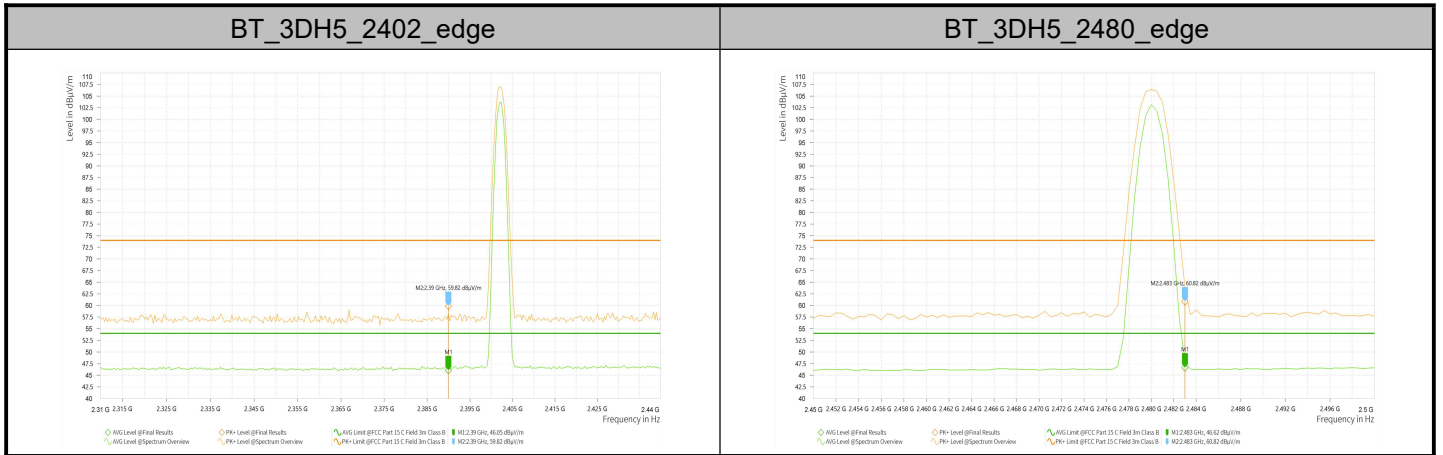


Test Report

Report No.: PD20230213RF01

Report Version: 01



Test Result_Spurious Emission

Note1: Test result Sweep the whole frequency band through the range from 9kHz to the 10th harmonic of the carrier the Emissions in the frequency band 9kHz-30MHz and 18GHz-26.5GHz are more than 20dB below the limit are not reported.

Note2: 'Low' indicates a frequency range below 1GHz, and 'High' indicates a frequency range above 1GHz.

Test Mode & Test Freq.[MHz]	Frequency [MHz]	PK+ Level [dBμV/m]	PK+ Limit [dBμV/m]	PK+ Margin [dB]	AVG Level [dBμV/m]	AVG Limit [dBμV/m]	AVG Margin [dB]	Polarization	Azimuth [deg]
BT_DH5_2402_High	4,804.000	53.45	74.00	20.55	40.72	54.00	13.28	H	0
	7,206.000	56.02	74.00	17.98	43.53	54.00	10.47	H	251.9
	9,608.000	47.57	74.00	26.43	34.90	54.00	19.10	V	138.4
	12,010.000	48.47	74.00	25.53	36.24	54.00	17.76	H	137.1
	14,412.000	49.81	74.00	24.19	37.19	54.00	16.81	H	221.7
	16,814.000	53.70	74.00	20.30	40.96	54.00	13.04	H	221.7
BT_DH5_2441_High	4,882.000	54.03	74.00	19.97	40.74	54.00	13.26	H	359.4
	7,323.000	56.34	74.00	17.66	43.63	54.00	10.37	H	360
	9,764.000	47.49	74.00	26.51	35.35	54.00	18.65	H	360
	12,205.000	48.76	74.00	25.24	36.11	54.00	17.89	H	0
	14,646.000	49.35	74.00	24.65	37.30	54.00	16.70	H	360
	17,087.000	54.68	74.00	19.32	40.98	54.00	13.02	H	352.3
BT_DH5_2480_High	4,960.000	53.37	74.00	20.63	40.79	54.00	13.21	H	0
	7,440.000	56.42	74.00	17.58	43.78	54.00	10.22	H	251.9
	9,920.000	47.82	74.00	26.18	35.19	54.00	18.81	V	7.7
	12,400.000	49.42	74.00	24.58	36.61	54.00	17.39	H	199.4
	14,880.000	50.05	74.00	23.95	37.32	54.00	16.68	H	0
	17,360.000	52.55	74.00	21.45	40.12	54.00	13.88	H	161.9
BT_2DH5_2402_High	4,804.000	52.87	74.00	21.13	40.37	54.00	13.63	H	259.9

Test Report

Report No.: PD20230213RF01

Report Version: 01

	7,206.000	55.83	74.00	18.17	43.11	54.00	10.89	H	19.4
	9,608.000	47.73	74.00	26.27	34.59	54.00	19.41	H	71.4
	12,010.000	48.20	74.00	25.80	35.80	54.00	18.20	H	360
	14,412.000	50.12	74.00	23.88	36.96	54.00	17.04	H	201.7
	16,814.000	53.80	74.00	20.20	40.83	54.00	13.17	H	201.7
BT_2DH5_2441_High	4,882.000	53.09	74.00	20.91	40.62	54.00	13.38	H	53.2
	7,323.000	56.04	74.00	17.96	43.54	54.00	10.46	V	16.8
	9,764.000	47.69	74.00	26.31	35.23	54.00	18.77	V	0
	12,205.000	48.77	74.00	25.23	35.98	54.00	18.02	V	360
	14,646.000	49.72	74.00	24.28	37.30	54.00	16.70	H	160.7
BT_2DH5_2480_High	17,087.000	53.48	74.00	20.52	40.91	54.00	13.09	H	225.3
	4,960.000	53.50	74.00	20.50	40.81	54.00	13.19	H	360
	7,440.000	56.22	74.00	17.78	43.84	54.00	10.16	H	153.8
	9,920.000	47.77	74.00	26.23	34.78	54.00	19.22	H	137.1
	12,400.000	48.98	74.00	25.02	36.75	54.00	17.25	H	360
	14,880.000	50.32	74.00	23.68	37.38	54.00	16.62	H	199.4
BT_3DH5_2402_High	17,360.000	53.17	74.00	20.83	40.20	54.00	13.80	H	292.2
	4,804.000	52.90	74.00	21.10	40.31	54.00	13.69	H	0
	7,206.000	55.98	74.00	18.02	43.05	54.00	10.95	H	84.6
	9,608.000	47.42	74.00	26.58	34.48	54.00	19.52	H	352.7
	12,010.000	48.51	74.00	25.49	35.84	54.00	18.16	H	360
	14,412.000	49.54	74.00	24.46	36.85	54.00	17.15	H	0
BT_3DH5_2441_High	16,814.000	53.28	74.00	20.72	41.03	54.00	12.97	V	360
	4,882.000	53.20	74.00	20.80	40.71	54.00	13.29	H	55.6
	7,323.000	55.75	74.00	18.25	43.47	54.00	10.53	V	0
	9,764.000	47.67	74.00	26.33	35.14	54.00	18.86	H	8.9
	12,205.000	49.22	74.00	24.78	36.05	54.00	17.95	H	0
	14,646.000	50.09	74.00	23.91	37.40	54.00	16.60	H	137.1
BT_3DH5_2480_High	17,087.000	53.40	74.00	20.60	40.94	54.00	13.06	H	199.4
	4,960.000	53.18	74.00	20.82	40.68	54.00	13.32	H	306.9
	7,440.000	56.03	74.00	17.97	43.62	54.00	10.38	H	108.2
	9,920.000	47.95	74.00	26.05	34.77	54.00	19.23	H	9.6
	12,400.000	48.96	74.00	25.04	36.33	54.00	17.67	H	9.6
	14,880.000	49.71	74.00	24.29	37.37	54.00	16.63	H	0
	17,360.000	52.83	74.00	21.17	40.18	54.00	13.82	H	0

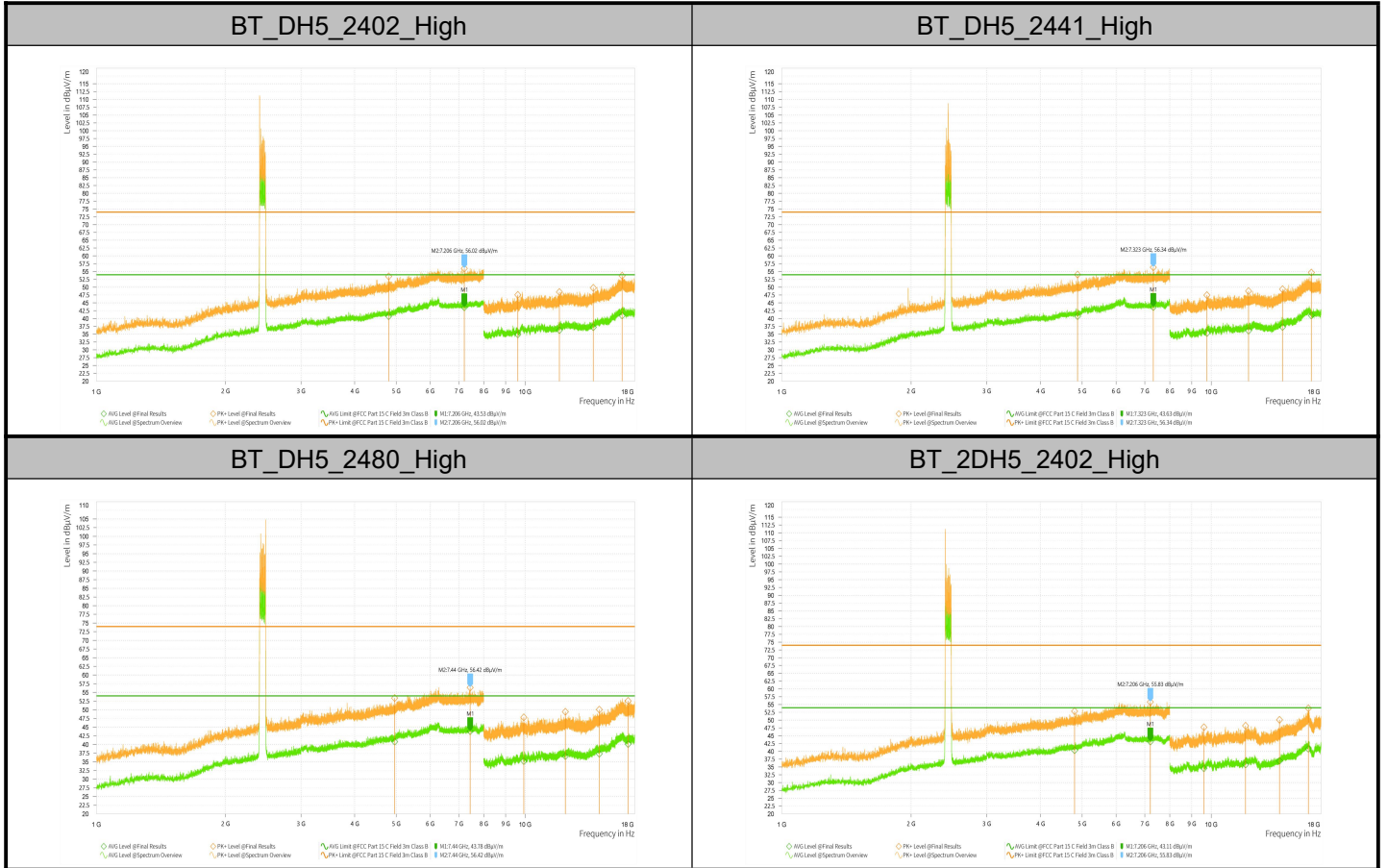
Test Report

Report No.: PD20230213RF01

Report Version: 01

Test Mode & Test Freq.[MHz]	Frequency [MHz]	QPK Level [dBμV/m]	QPK Limit [dBμV/m]	QPK Margin [dB]	Pol.	Azimuth [deg]
BT_3DH5_2402_Low	32.802	31.12	40.00	8.88	V	313.8
	38.407	33.11	40.00	6.89	V	250.4
	61.148	22.70	40.00	17.30	V	219.3
	99.571	23.00	43.50	20.50	V	90.2
	232.730	23.32	46.00	22.68	H	360
	441.172	20.34	46.00	25.66	H	185.9
	937.758	15.94	46.00	30.06	H	109.7

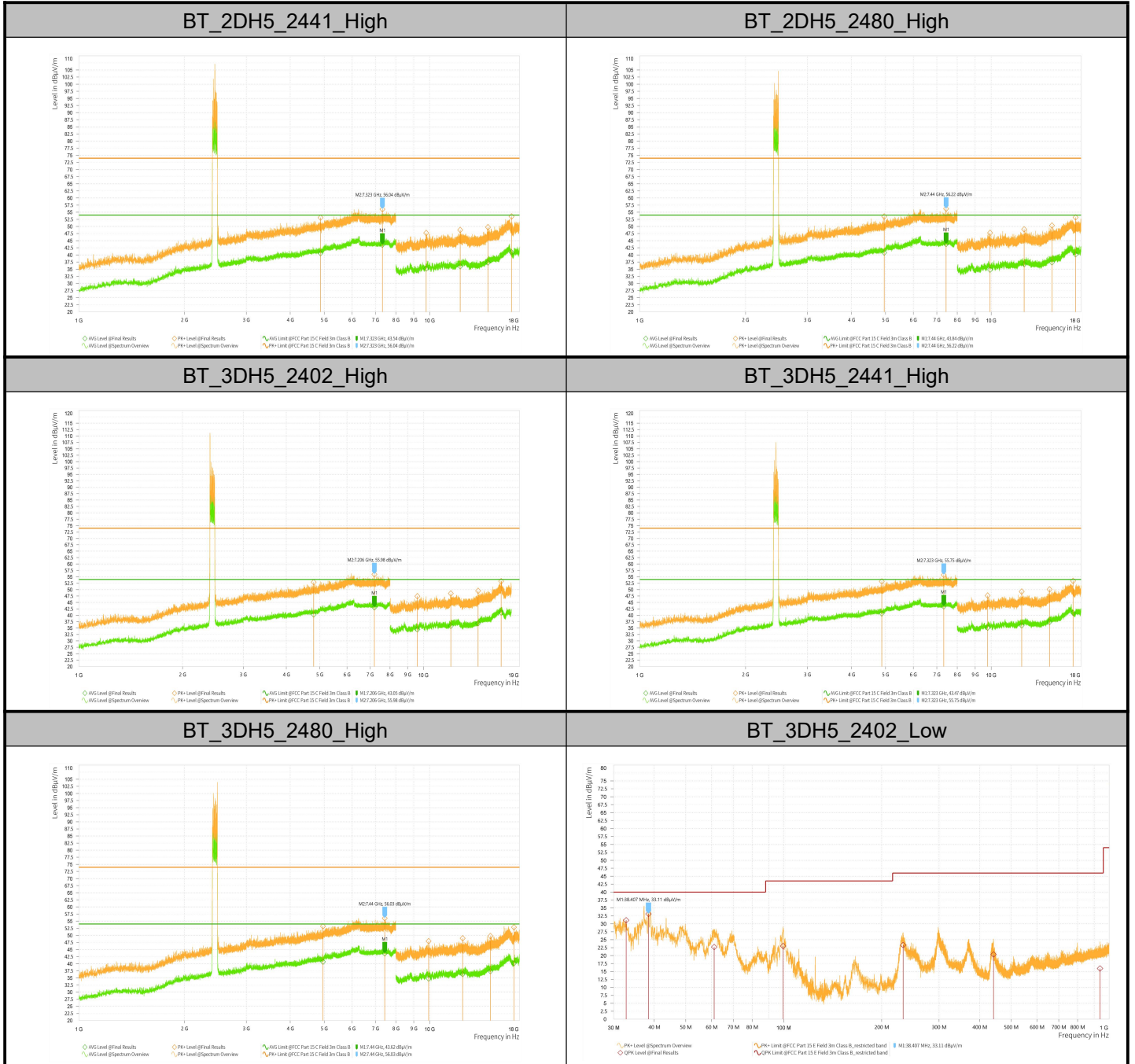
Test Graphs_Spurious Emission



Test Report

Report No.: PD20230213RF01

Report Version: 01



Appendix C – The EUT Appearance

Refer to “Attachment 1: External Photograph” and “ Attachment 2: Internal Photograph” file.

Appendix D – Test Setup Photograph

Refer to “Attachment 5: RF Test Setup Photograph” file.

*****End of the Report*****