



N77-3700-3980	30	30	CP-QPSK	L	Outer_Full	22.74	21.47	25.16	19.06	PASS
N77-3700-3980	30	30	CP-16QAM	L	Inner_1RB_Left	24.6	23.43	27.06	20.96	PASS
N77-3700-3980	30	30	CP-16QAM	L	Inner_1RB_Right	25	23.85	27.47	21.37	PASS
N77-3700-3980	30	30	CP-16QAM	L	Outer_Full	22.79	21.58	25.24	19.14	PASS
N77-3700-3980	30	30	CP-64QAM	L	Inner_1RB_Left	22.79	21.65	25.27	19.17	PASS
N77-3700-3980	30	30	CP-64QAM	L	Inner_1RB_Right	22.84	21.5	25.23	19.13	PASS
N77-3700-3980	30	30	CP-64QAM	L	Outer_Full	22.2	21.08	24.69	18.59	PASS
N77-3700-3980	30	30	CP-256QAM	L	Inner_1RB_Left	19.2	17.89	21.6	15.5	PASS
N77-3700-3980	30	30	CP-256QAM	L	Inner_1RB_Right	19.32	18.15	21.78	15.68	PASS
N77-3700-3980	30	30	CP-256QAM	L	Outer_Full	19.22	18.15	21.73	15.63	PASS
N77-3700-3980	30	30	DFT-PI2BPSK	M	Inner_1RB_Left	27.05	25.76	29.46	23.36	PASS
N77-3700-3980	30	30	DFT-PI2BPSK	M	Inner_1RB_Right	26.83	25.37	29.17	23.07	PASS
N77-3700-3980	30	30	DFT-PI2BPSK	M	Outer_Full	24.8	23.94	27.4	21.3	PASS
N77-3700-3980	30	30	DFT-QPSK	M	Inner_1RB_Left	27.02	25.74	29.44	23.34	PASS
N77-3700-3980	30	30	DFT-QPSK	M	Inner_1RB_Right	26.81	25.66	29.28	23.18	PASS
N77-3700-3980	30	30	DFT-QPSK	M	Outer_Full	24.76	23.54	27.2	21.1	PASS
N77-3700-3980	30	30	DFT-16QAM	M	Inner_1RB_Left	26.17	24.4	28.38	22.28	PASS
N77-3700-3980	30	30	DFT-16QAM	M	Inner_1RB_Right	26.08	25.01	28.59	22.49	PASS
N77-3700-3980	30	30	DFT-16QAM	M	Outer_Full	23.8	22.45	26.19	20.09	PASS
N77-3700-3980	30	30	DFT-64QAM	M	Inner_1RB_Left	25.46	24.35	27.95	21.85	PASS
N77-3700-3980	30	30	DFT-64QAM	M	Inner_1RB_Right	25.53	24.42	28.02	21.92	PASS
N77-3700-3980	30	30	DFT-64QAM	M	Outer_Full	23.89	22.64	26.32	20.22	PASS
N77-3700-3980	30	30	DFT-256QAM	M	Inner_1RB_Left	23.68	22.56	26.17	20.07	PASS
N77-3700-3980	30	30	DFT-256QAM	M	Inner_1RB_Right	23.9	22.62	26.32	20.22	PASS
N77-3700-3980	30	30	DFT-256QAM	M	Outer_Full	23.43	21.94	25.76	19.66	PASS
N77-3700-3980	30	30	CP-QPSK	M	Inner_1RB_Left	25.5	24.06	27.85	21.75	PASS
N77-3700-3980	30	30	CP-QPSK	M	Inner_1RB_Right	24.99	23.72	27.41	21.31	PASS
N77-3700-3980	30	30	CP-QPSK	M	Outer_Full	22.74	21.39	25.13	19.03	PASS
N77-3700-3980	30	30	CP-16QAM	M	Inner_1RB_Left	25.09	23.72	27.47	21.37	PASS
N77-3700-3980	30	30	CP-16QAM	M	Inner_1RB_Right	24.97	23.69	27.39	21.29	PASS
N77-3700-3980	30	30	CP-16QAM	M	Outer_Full	22.8	21.53	25.22	19.12	PASS
N77-3700-3980	30	30	CP-64QAM	M	Inner_1RB_Left	23.08	21.74	25.47	19.37	PASS
N77-3700-3980	30	30	CP-64QAM	M	Inner_1RB_Right	22.64	21.4	25.07	18.97	PASS
N77-3700-3980	30	30	CP-64QAM	M	Outer_Full	22.29	21.08	24.74	18.64	PASS
N77-3700-3980	30	30	CP-256QAM	M	Inner_1RB_Left	19.44	18.06	21.81	15.71	PASS
N77-3700-3980	30	30	CP-256QAM	M	Inner_1RB_Right	18.89	17.99	21.47	15.37	PASS
N77-3700-3980	30	30	CP-256QAM	M	Outer_Full	19.32	18.12	21.77	15.67	PASS
N77-3700-3980	30	30	DFT-PI2BPSK	H	Inner_1RB_Left	26.67	25.58	29.17	23.07	PASS



Unless otherwise agreed in writing, this document is issued by the Company subject to its General Conditions of Service printed overleaf, available on request or accessible at <http://www.sgs.com/en/Terms-and-Conditions.aspx> and, for electronic format documents, subject to Terms and Conditions for Electronic Documents at <http://www.sgs.com/en/Terms-and-Conditions/Terms-e-Documents.aspx>. Attention is drawn to the limitation of liability, indemnification and jurisdiction issues defined therein. Any holder of this document is advised that information contained hereon reflects the Company's findings at the time of its intervention only and within the limits of Client's instructions, if any. The Company's sole responsibility is to its Client and this document does not exonerate parties to a transaction from exercising all their rights and obligations under the transaction documents. This document cannot be reproduced except in full, without prior written approval of the Company. Any unauthorized alteration, forgery or falsification of the content or appearance of this document is unlawful and offenders may be prosecuted to the fullest extent of the law. Unless otherwise stated the results shown in this test report refer only to the sample(s) tested and such sample(s) are retained for 30 days only.

Attention: To check the authenticity of testing/inspection report & certificate, please contact us at telephone: (86-755) 8307 1443, or email: CN.Doccheck@sgs.com

South of No. 6 Plant, No. 1, Pansheng Road, Suzhou Industrial Park, Suzhou Area, China (Jiangsu) Pilot Free Trade Zone 215000 t (86-512) 62992980 www.sgs.com.cn
 中国·苏州·中国(江苏)自由贸易试验区苏州片区苏州工业园区海胜路1号的6号厂房南楼 邮编: 215000 t (86-512) 62992980 sgs.china@sgs.com



Report No.: SEWM2304000122RG02

Rev.: 01

Page: 24 of 307

N77-3700-3980	30	30	DFT-PI2BPSK	H	Inner_1RB_Right	26.96	25.5	29.3	23.2	PASS
N77-3700-3980	30	30	DFT-PI2BPSK	H	Outer_Full	24.83	23.97	27.43	21.33	PASS
N77-3700-3980	30	30	DFT-QPSK	H	Inner_1RB_Left	27.02	25.74	29.44	23.34	PASS
N77-3700-3980	30	30	DFT-QPSK	H	Inner_1RB_Right	26.79	25.64	29.26	23.16	PASS
N77-3700-3980	30	30	DFT-QPSK	H	Outer_Full	24.76	23.54	27.2	21.1	PASS
N77-3700-3980	30	30	DFT-16QAM	H	Inner_1RB_Left	26.11	24.34	28.32	22.22	PASS
N77-3700-3980	30	30	DFT-16QAM	H	Inner_1RB_Right	25.99	24.92	28.5	22.4	PASS
N77-3700-3980	30	30	DFT-16QAM	H	Outer_Full	23.86	22.51	26.25	20.15	PASS
N77-3700-3980	30	30	DFT-64QAM	H	Inner_1RB_Left	25.55	24.44	28.04	21.94	PASS
N77-3700-3980	30	30	DFT-64QAM	H	Inner_1RB_Right	25.36	24.25	27.85	21.75	PASS
N77-3700-3980	30	30	DFT-64QAM	H	Outer_Full	23.86	22.61	26.29	20.19	PASS
N77-3700-3980	30	30	DFT-256QAM	H	Inner_1RB_Left	23.87	22.75	26.36	20.26	PASS
N77-3700-3980	30	30	DFT-256QAM	H	Inner_1RB_Right	23.79	22.51	26.21	20.11	PASS
N77-3700-3980	30	30	DFT-256QAM	H	Outer_Full	23.54	22.05	25.87	19.77	PASS
N77-3700-3980	30	30	CP-QPSK	H	Inner_1RB_Left	24.88	23.69	27.34	21.24	PASS
N77-3700-3980	30	30	CP-QPSK	H	Inner_1RB_Right	25.18	23.71	27.52	21.42	PASS
N77-3700-3980	30	30	CP-QPSK	H	Outer_Full	22.71	20.98	24.94	18.84	PASS
N77-3700-3980	30	30	CP-16QAM	H	Inner_1RB_Left	24.54	23.48	27.05	20.95	PASS
N77-3700-3980	30	30	CP-16QAM	H	Inner_1RB_Right	24.87	23.54	27.27	21.17	PASS
N77-3700-3980	30	30	CP-16QAM	H	Outer_Full	22.72	21.04	24.97	18.87	PASS
N77-3700-3980	30	30	CP-64QAM	H	Inner_1RB_Left	22.56	21.6	25.12	19.02	PASS
N77-3700-3980	30	30	CP-64QAM	H	Inner_1RB_Right	22.96	21.49	25.3	19.2	PASS
N77-3700-3980	30	30	CP-64QAM	H	Outer_Full	22.26	20.65	24.54	18.44	PASS
N77-3700-3980	30	30	CP-256QAM	H	Inner_1RB_Left	19.01	18.19	21.63	15.53	PASS
N77-3700-3980	30	30	CP-256QAM	H	Inner_1RB_Right	19.49	18.24	21.92	15.82	PASS
N77-3700-3980	30	30	CP-256QAM	H	Outer_Full	19.24	17.63	21.52	15.42	PASS
N77-3700-3980	30	40	DFT-PI2BPSK	L	Inner_1RB_Left	26.76	25.9	29.36	23.26	PASS
N77-3700-3980	30	40	DFT-PI2BPSK	L	Inner_1RB_Right	26.98	25.52	29.32	23.22	PASS
N77-3700-3980	30	40	DFT-PI2BPSK	L	Outer_Full	24.83	23.97	27.43	21.33	PASS
N77-3700-3980	30	40	DFT-QPSK	L	Inner_1RB_Left	26.99	25.71	29.41	23.31	PASS
N77-3700-3980	30	40	DFT-QPSK	L	Inner_1RB_Right	26.75	25.6	29.22	23.12	PASS
N77-3700-3980	30	40	DFT-QPSK	L	Outer_Full	24.89	23.67	27.33	21.23	PASS
N77-3700-3980	30	40	DFT-16QAM	L	Inner_1RB_Left	26.26	24.49	28.47	22.37	PASS
N77-3700-3980	30	40	DFT-16QAM	L	Inner_1RB_Right	26	24.93	28.51	22.41	PASS
N77-3700-3980	30	40	DFT-16QAM	L	Outer_Full	23.89	22.54	26.28	20.18	PASS
N77-3700-3980	30	40	DFT-64QAM	L	Inner_1RB_Left	25.58	24.47	28.07	21.97	PASS
N77-3700-3980	30	40	DFT-64QAM	L	Inner_1RB_Right	25.54	24.43	28.03	21.93	PASS
N77-3700-3980	30	40	DFT-64QAM	L	Outer_Full	23.67	22.42	26.1	20	PASS



Unless otherwise agreed in writing, this document is issued by the Company subject to its General Conditions of Service printed overleaf, available on request or accessible at <http://www.sgs.com/en/Terms-and-Conditions.aspx> and, for electronic format documents, subject to Terms and Conditions for Electronic Documents at <http://www.sgs.com/en/Terms-and-Conditions/Terms-e-Documents.aspx>. Attention is drawn to the limitation of liability, indemnification and jurisdiction issues defined therein. Any holder of this document is advised that information contained hereon reflects the Company's findings at the time of its intervention only and within the limits of Client's instructions, if any. The Company's sole responsibility is to its Client and this document does not exonerate parties to a transaction from exercising all their rights and obligations under the transaction documents. This document cannot be reproduced except in full, without prior written approval of the Company. Any unauthorized alteration, forgery or falsification of the content or appearance of this document is unlawful and offenders may be prosecuted to the fullest extent of the law. Unless otherwise stated the results shown in this test report refer only to the sample(s) tested and such sample(s) are retained for 30 days only.

Attention: To check the authenticity of testing/inspection report & certificate, please contact us at telephone: (86-755) 8307 1443, or email: CN.Doccheck@sgs.com

South of No. 6 Plant, No. 1, Pansheng Road, Suzhou Industrial Park, Suzhou Area, China (Jiangsu) Pilot Free Trade Zone 215000 t (86-512) 62992980 www.sgs.com.cn
 中国·苏州·中国(江苏)自由贸易试验区苏州片区苏州工业园区海胜路1号的6号厂房南楼 邮编: 215000 t (86-512) 62992980 sgs.china@sgs.com



Report No.: SEWM2304000122RG02

Rev.: 01

Page: 25 of 307

N77-3700-3980	30	40	DFT-256QAM	L	Inner_1RB_Left	23.84	22.72	26.33	20.23	PASS
N77-3700-3980	30	40	DFT-256QAM	L	Inner_1RB_Right	23.84	22.56	26.26	20.16	PASS
N77-3700-3980	30	40	DFT-256QAM	L	Outer_Full	23.5	22.01	25.83	19.73	PASS
N77-3700-3980	30	40	CP-QPSK	L	Inner_1RB_Left	25.37	24.16	27.82	21.72	PASS
N77-3700-3980	30	40	CP-QPSK	L	Inner_1RB_Right	25.33	23.89	27.68	21.58	PASS
N77-3700-3980	30	40	CP-QPSK	L	Outer_Full	22.74	21.53	25.19	19.09	PASS
N77-3700-3980	30	40	CP-16QAM	L	Inner_1RB_Left	24.77	23.74	27.3	21.2	PASS
N77-3700-3980	30	40	CP-16QAM	L	Inner_1RB_Right	24.95	23.51	27.3	21.2	PASS
N77-3700-3980	30	40	CP-16QAM	L	Outer_Full	22.8	21.53	25.22	19.12	PASS
N77-3700-3980	30	40	CP-64QAM	L	Inner_1RB_Left	22.79	21.77	25.32	19.22	PASS
N77-3700-3980	30	40	CP-64QAM	L	Inner_1RB_Right	23	21.59	25.36	19.26	PASS
N77-3700-3980	30	40	CP-64QAM	L	Outer_Full	22.27	21.05	24.71	18.61	PASS
N77-3700-3980	30	40	CP-256QAM	L	Inner_1RB_Left	19.1	18.23	21.7	15.6	PASS
N77-3700-3980	30	40	CP-256QAM	L	Inner_1RB_Right	19.23	18.11	21.72	15.62	PASS
N77-3700-3980	30	40	CP-256QAM	L	Outer_Full	19.29	18.1	21.75	15.65	PASS
N77-3700-3980	30	40	DFT-PI2BPSK	M	Inner_1RB_Left	26.87	25.69	29.33	23.23	PASS
N77-3700-3980	30	40	DFT-PI2BPSK	M	Inner_1RB_Right	26.78	25.32	29.12	23.02	PASS
N77-3700-3980	30	40	DFT-PI2BPSK	M	Outer_Full	24.85	23.99	27.45	21.35	PASS
N77-3700-3980	30	40	DFT-QPSK	M	Inner_1RB_Left	26.91	25.63	29.33	23.23	PASS
N77-3700-3980	30	40	DFT-QPSK	M	Inner_1RB_Right	26.72	25.57	29.19	23.09	PASS
N77-3700-3980	30	40	DFT-QPSK	M	Outer_Full	24.87	23.65	27.31	21.21	PASS
N77-3700-3980	30	40	DFT-16QAM	M	Inner_1RB_Left	26.26	24.49	28.47	22.37	PASS
N77-3700-3980	30	40	DFT-16QAM	M	Inner_1RB_Right	26.11	25.04	28.62	22.52	PASS
N77-3700-3980	30	40	DFT-16QAM	M	Outer_Full	23.94	22.59	26.33	20.23	PASS
N77-3700-3980	30	40	DFT-64QAM	M	Inner_1RB_Left	25.63	24.52	28.12	22.02	PASS
N77-3700-3980	30	40	DFT-64QAM	M	Inner_1RB_Right	25.45	24.34	27.94	21.84	PASS
N77-3700-3980	30	40	DFT-64QAM	M	Outer_Full	23.68	22.43	26.11	20.01	PASS
N77-3700-3980	30	40	DFT-256QAM	M	Inner_1RB_Left	23.78	22.66	26.27	20.17	PASS
N77-3700-3980	30	40	DFT-256QAM	M	Inner_1RB_Right	23.73	22.45	26.15	20.05	PASS
N77-3700-3980	30	40	DFT-256QAM	M	Outer_Full	23.55	22.06	25.88	19.78	PASS
N77-3700-3980	30	40	CP-QPSK	M	Inner_1RB_Left	25.59	24.06	27.9	21.8	PASS
N77-3700-3980	30	40	CP-QPSK	M	Inner_1RB_Right	25.21	23.82	27.58	21.48	PASS
N77-3700-3980	30	40	CP-QPSK	M	Outer_Full	22.82	21.38	25.17	19.07	PASS
N77-3700-3980	30	40	CP-16QAM	M	Inner_1RB_Left	25.18	23.75	27.53	21.43	PASS
N77-3700-3980	30	40	CP-16QAM	M	Inner_1RB_Right	24.9	23.83	27.41	21.31	PASS
N77-3700-3980	30	40	CP-16QAM	M	Outer_Full	22.86	21.52	25.25	19.15	PASS
N77-3700-3980	30	40	CP-64QAM	M	Inner_1RB_Left	23.1	21.82	25.52	19.42	PASS
N77-3700-3980	30	40	CP-64QAM	M	Inner_1RB_Right	22.78	21.72	25.29	19.19	PASS



Unless otherwise agreed in writing, this document is issued by the Company subject to its General Conditions of Service printed overleaf, available on request or accessible at <http://www.sgs.com/en/Terms-and-Conditions.aspx> and, for electronic format documents, subject to Terms and Conditions for Electronic Documents at <http://www.sgs.com/en/Terms-and-Conditions/Terms-e-Documents.aspx>. Attention is drawn to the limitation of liability, indemnification and jurisdiction issues defined therein. Any holder of this document is advised that information contained hereon reflects the Company's findings at the time of its intervention only and within the limits of Client's instructions, if any. The Company's sole responsibility is to its Client and this document does not exonerate parties to a transaction from exercising all their rights and obligations under the transaction documents. This document cannot be reproduced except in full, without prior written approval of the Company. Any unauthorized alteration, forgery or falsification of the content or appearance of this document is unlawful and offenders may be prosecuted to the fullest extent of the law. Unless otherwise stated the results shown in this test report refer only to the sample(s) tested and such sample(s) are retained for 30 days only.

Attention: To check the authenticity of testing/inspection report & certificate, please contact us at telephone: (86-755) 8307 1443, or email: CN.Doccheck@sgs.com

South of No. 6 Plant, No. 1, Pansheng Road, Suzhou Industrial Park, Suzhou Area, China (Jiangsu) Pilot Free Trade Zone 215000 t (86-512) 62992980 www.sgs.com.cn
 中国·苏州·中国(江苏)自由贸易试验区苏州片区苏州工业园区海胜路1号的6号厂房南楼 邮编: 215000 t (86-512) 62992980 sgs.china@sgs.com



Report No.: SEWM2304000122RG02

Rev.: 01

Page: 26 of 307

N77-3700-3980	30	40	CP-64QAM	M	Outer_Full	22.38	21.14	24.81	18.71	PASS
N77-3700-3980	30	40	CP-256QAM	M	Inner_1RB_Left	19.7	18.54	22.17	16.07	PASS
N77-3700-3980	30	40	CP-256QAM	M	Inner_1RB_Right	19.25	18.29	21.81	15.71	PASS
N77-3700-3980	30	40	CP-256QAM	M	Outer_Full	19.37	18.1	21.79	15.69	PASS
N77-3700-3980	30	40	DFT-PI2BPSK	H	Inner_1RB_Left	26.71	25.53	29.17	23.07	PASS
N77-3700-3980	30	40	DFT-PI2BPSK	H	Inner_1RB_Right	26.89	25.43	29.23	23.13	PASS
N77-3700-3980	30	40	DFT-PI2BPSK	H	Outer_Full	24.93	24.07	27.53	21.43	PASS
N77-3700-3980	30	40	DFT-QPSK	H	Inner_1RB_Left	26.96	25.68	29.38	23.28	PASS
N77-3700-3980	30	40	DFT-QPSK	H	Inner_1RB_Right	26.72	25.57	29.19	23.09	PASS
N77-3700-3980	30	40	DFT-QPSK	H	Outer_Full	24.77	23.55	27.21	21.11	PASS
N77-3700-3980	30	40	DFT-16QAM	H	Inner_1RB_Left	26.3	24.53	28.51	22.41	PASS
N77-3700-3980	30	40	DFT-16QAM	H	Inner_1RB_Right	26.16	25.09	28.67	22.57	PASS
N77-3700-3980	30	40	DFT-16QAM	H	Outer_Full	23.89	22.54	26.28	20.18	PASS
N77-3700-3980	30	40	DFT-64QAM	H	Inner_1RB_Left	25.64	24.53	28.13	22.03	PASS
N77-3700-3980	30	40	DFT-64QAM	H	Inner_1RB_Right	25.46	24.35	27.95	21.85	PASS
N77-3700-3980	30	40	DFT-64QAM	H	Outer_Full	23.71	22.46	26.14	20.04	PASS
N77-3700-3980	30	40	DFT-256QAM	H	Inner_1RB_Left	23.84	22.72	26.33	20.23	PASS
N77-3700-3980	30	40	DFT-256QAM	H	Inner_1RB_Right	23.86	22.58	26.28	20.18	PASS
N77-3700-3980	30	40	DFT-256QAM	H	Outer_Full	23.55	22.06	25.88	19.78	PASS
N77-3700-3980	30	40	CP-QPSK	H	Inner_1RB_Left	26.68	25.57	29.17	23.07	PASS
N77-3700-3980	30	40	CP-QPSK	H	Inner_1RB_Right	26.89	25.43	29.23	23.13	PASS
N77-3700-3980	30	40	CP-QPSK	H	Outer_Full	22.82	21.18	25.09	18.99	PASS
N77-3700-3980	30	40	CP-16QAM	H	Inner_1RB_Left	24.49	22.98	26.81	20.71	PASS
N77-3700-3980	30	40	CP-16QAM	H	Inner_1RB_Right	24.94	23.51	27.29	21.19	PASS
N77-3700-3980	30	40	CP-16QAM	H	Outer_Full	22.69	21.23	25.03	18.93	PASS
N77-3700-3980	30	40	CP-64QAM	H	Inner_1RB_Left	22.57	21.18	24.94	18.84	PASS
N77-3700-3980	30	40	CP-64QAM	H	Inner_1RB_Right	23.01	21.71	25.42	19.32	PASS
N77-3700-3980	30	40	CP-64QAM	H	Outer_Full	22.22	20.8	24.58	18.48	PASS
N77-3700-3980	30	40	CP-256QAM	H	Inner_1RB_Left	19.32	18.06	21.75	15.65	PASS
N77-3700-3980	30	40	CP-256QAM	H	Inner_1RB_Right	19.29	18.01	21.71	15.61	PASS
N77-3700-3980	30	40	CP-256QAM	H	Outer_Full	19.25	17.82	21.6	15.5	PASS
N77-3700-3980	30	50	DFT-PI2BPSK	L	Inner_1RB_Left	26.83	25.67	29.30	23.20	PASS
N77-3700-3980	30	50	DFT-PI2BPSK	L	Inner_1RB_Right	26.78	25.32	29.12	23.02	PASS
N77-3700-3980	30	50	DFT-PI2BPSK	L	Outer_Full	24.82	23.96	27.42	21.32	PASS
N77-3700-3980	30	50	DFT-QPSK	L	Inner_1RB_Left	26.97	25.69	29.39	23.29	PASS
N77-3700-3980	30	50	DFT-QPSK	L	Inner_1RB_Right	26.81	25.66	29.28	23.18	PASS
N77-3700-3980	30	50	DFT-QPSK	L	Outer_Full	24.84	23.62	27.28	21.18	PASS
N77-3700-3980	30	50	DFT-16QAM	L	Inner_1RB_Left	26.28	24.51	28.49	22.39	PASS



Unless otherwise agreed in writing, this document is issued by the Company subject to its General Conditions of Service printed overleaf, available on request or accessible at <http://www.sgs.com/en/Terms-and-Conditions.aspx> and, for electronic format documents, subject to Terms and Conditions for Electronic Documents at <http://www.sgs.com/en/Terms-and-Conditions/Terms-e-Documents.aspx>. Attention is drawn to the limitation of liability, indemnification and jurisdiction issues defined therein. Any holder of this document is advised that information contained hereon reflects the Company's findings at the time of its intervention only and within the limits of Client's instructions, if any. The Company's sole responsibility is to its Client and this document does not exonerate parties to a transaction from exercising all their rights and obligations under the transaction documents. This document cannot be reproduced except in full, without prior written approval of the Company. Any unauthorized alteration, forgery or falsification of the content or appearance of this document is unlawful and offenders may be prosecuted to the fullest extent of the law. Unless otherwise stated the results shown in this test report refer only to the sample(s) tested and such sample(s) are retained for 30 days only.

Attention: To check the authenticity of testing/inspection report & certificate, please contact us at telephone: (86-755) 8307 1443, or email: CN.Doccheck@sgs.com

South of No. 6 Plant, No. 1, Runsheng Road, Suzhou Industrial Park, Suzhou Area, China (Jiangsu) Pilot Free Trade Zone 215000 t (86-512) 62992980 www.sgs.com.cn
 中国·苏州·中国(江苏)自由贸易试验区苏州片区苏州工业园区润胜路1号的6号厂房南楼 邮编: 215000 t (86-512) 62992980 sgs.china@sgs.com



Report No.: SEWM2304000122RG02

Rev.: 01

Page: 27 of 307

N77-3700-3980	30	50	DFT-16QAM	L	Inner_1RB_Right	26.12	25.05	28.63	22.53	PASS
N77-3700-3980	30	50	DFT-16QAM	L	Outer_Full	23.97	22.62	26.36	20.26	PASS
N77-3700-3980	30	50	DFT-64QAM	L	Inner_1RB_Left	25.45	24.34	27.94	21.84	PASS
N77-3700-3980	30	50	DFT-64QAM	L	Inner_1RB_Right	25.49	24.38	27.98	21.88	PASS
N77-3700-3980	30	50	DFT-64QAM	L	Outer_Full	23.85	22.6	26.28	20.18	PASS
N77-3700-3980	30	50	DFT-256QAM	L	Inner_1RB_Left	23.85	22.73	26.34	20.24	PASS
N77-3700-3980	30	50	DFT-256QAM	L	Inner_1RB_Right	23.69	22.41	26.11	20.01	PASS
N77-3700-3980	30	50	DFT-256QAM	L	Outer_Full	23.42	21.93	25.75	19.65	PASS
N77-3700-3980	30	50	CP-QPSK	L	Inner_1RB_Left	25.08	23.74	27.47	21.37	PASS
N77-3700-3980	30	50	CP-QPSK	L	Inner_1RB_Right	24.89	23.63	27.32	21.22	PASS
N77-3700-3980	30	50	CP-QPSK	L	Outer_Full	22.71	21.21	25.03	18.93	PASS
N77-3700-3980	30	50	CP-16QAM	L	Inner_1RB_Left	24.63	23.22	26.99	20.89	PASS
N77-3700-3980	30	50	CP-16QAM	L	Inner_1RB_Right	24.51	23.02	26.84	20.74	PASS
N77-3700-3980	30	50	CP-16QAM	L	Outer_Full	22.73	21.19	25.04	18.94	PASS
N77-3700-3980	30	50	CP-64QAM	L	Inner_1RB_Left	22.8	21.51	25.21	19.11	PASS
N77-3700-3980	30	50	CP-64QAM	L	Inner_1RB_Right	22.57	21.34	25.01	18.91	PASS
N77-3700-3980	30	50	CP-64QAM	L	Outer_Full	22.23	20.72	24.55	18.45	PASS
N77-3700-3980	30	50	CP-256QAM	L	Inner_1RB_Left	19.03	17.91	21.52	15.42	PASS
N77-3700-3980	30	50	CP-256QAM	L	Inner_1RB_Right	18.92	17.73	21.38	15.28	PASS
N77-3700-3980	30	50	CP-256QAM	L	Outer_Full	19.16	17.69	21.5	15.4	PASS
N77-3700-3980	30	50	DFT-PI2BPSK	M	Inner_1RB_Left	26.78	25.54	29.21	23.11	PASS
N77-3700-3980	30	50	DFT-PI2BPSK	M	Inner_1RB_Right	26.97	25.51	29.31	23.21	PASS
N77-3700-3980	30	50	DFT-PI2BPSK	M	Outer_Full	24.82	23.96	27.42	21.32	PASS
N77-3700-3980	30	50	DFT-QPSK	M	Inner_1RB_Left	26.88	25.6	29.3	23.2	PASS
N77-3700-3980	30	50	DFT-QPSK	M	Inner_1RB_Right	26.75	25.6	29.22	23.12	PASS
N77-3700-3980	30	50	DFT-QPSK	M	Outer_Full	24.81	23.59	27.25	21.15	PASS
N77-3700-3980	30	50	DFT-16QAM	M	Inner_1RB_Left	26.15	24.38	28.36	22.26	PASS
N77-3700-3980	30	50	DFT-16QAM	M	Inner_1RB_Right	26.19	25.12	28.7	22.6	PASS
N77-3700-3980	30	50	DFT-16QAM	M	Outer_Full	23.97	22.62	26.36	20.26	PASS
N77-3700-3980	30	50	DFT-64QAM	M	Inner_1RB_Left	25.55	24.44	28.04	21.94	PASS
N77-3700-3980	30	50	DFT-64QAM	M	Inner_1RB_Right	25.39	24.28	27.88	21.78	PASS
N77-3700-3980	30	50	DFT-64QAM	M	Outer_Full	23.88	22.63	26.31	20.21	PASS
N77-3700-3980	30	50	DFT-256QAM	M	Inner_1RB_Left	23.87	22.75	26.36	20.26	PASS
N77-3700-3980	30	50	DFT-256QAM	M	Inner_1RB_Right	23.7	22.42	26.12	20.02	PASS
N77-3700-3980	30	50	DFT-256QAM	M	Outer_Full	23.39	21.9	25.72	19.62	PASS
N77-3700-3980	30	50	CP-QPSK	M	Inner_1RB_Left	25.19	23.79	27.56	21.46	PASS
N77-3700-3980	30	50	CP-QPSK	M	Inner_1RB_Right	24.98	23.8	27.44	21.34	PASS
N77-3700-3980	30	50	CP-QPSK	M	Outer_Full	22.64	21.2	24.99	18.89	PASS



Unless otherwise agreed in writing, this document is issued by the Company subject to its General Conditions of Service printed overleaf, available on request or accessible at <http://www.sgs.com/en/Terms-and-Conditions.aspx> and, for electronic format documents, subject to Terms and Conditions for Electronic Documents at <http://www.sgs.com/en/Terms-and-Conditions/Terms-e-Documents.aspx>. Attention is drawn to the limitation of liability, indemnification and jurisdiction issues defined therein. Any holder of this document is advised that information contained hereon reflects the Company's findings at the time of its intervention only and within the limits of Client's instructions, if any. The Company's sole responsibility is to its Client and this document does not exonerate parties to a transaction from exercising all their rights and obligations under the transaction documents. This document cannot be reproduced except in full, without prior written approval of the Company. Any unauthorized alteration, forgery or falsification of the content or appearance of this document is unlawful and offenders may be prosecuted to the fullest extent of the law. Unless otherwise stated the results shown in this test report refer only to the sample(s) tested and such sample(s) are retained for 30 days only.

Attention: To check the authenticity of testing/inspection report & certificate, please contact us at telephone: (86-755) 8307 1443, or email: CN.Doccheck@sgs.com

South of No. 6 Plant, No. 1, Pansheng Road, Suzhou Industrial Park, Suzhou Area, China (Jiangsu) Pilot Free Trade Zone 215000 t (86-512) 62992980 www.sgs.com.cn
 中国·苏州·中国(江苏)自由贸易试验区苏州片区苏州工业园区海胜路1号厂房南楼 邮编: 215000 t (86-512) 62992980 sgs.china@sgs.com



Report No.: SEWM2304000122RG02

Rev.: 01

Page: 28 of 307

N77-3700-3980	30	50	CP-16QAM	M	Inner_1RB_Left	24.71	23.41	27.12	21.02	PASS
N77-3700-3980	30	50	CP-16QAM	M	Inner_1RB_Right	24.81	23.58	27.25	21.15	PASS
N77-3700-3980	30	50	CP-16QAM	M	Outer_Full	22.6	21.34	25.03	18.93	PASS
N77-3700-3980	30	50	CP-64QAM	M	Inner_1RB_Left	22.78	21.57	25.23	19.13	PASS
N77-3700-3980	30	50	CP-64QAM	M	Inner_1RB_Right	22.67	21.63	25.19	19.09	PASS
N77-3700-3980	30	50	CP-64QAM	M	Outer_Full	22.12	20.9	24.56	18.46	PASS
N77-3700-3980	30	50	CP-256QAM	M	Inner_1RB_Left	19.12	18.04	21.62	15.52	PASS
N77-3700-3980	30	50	CP-256QAM	M	Inner_1RB_Right	19.25	18.31	21.82	15.72	PASS
N77-3700-3980	30	50	CP-256QAM	M	Outer_Full	19.1	17.88	21.54	15.44	PASS
N77-3700-3980	30	50	DFT-PI2BPSK	H	Inner_1RB_Left	26.86	25.56	29.27	23.17	PASS
N77-3700-3980	30	50	DFT-PI2BPSK	H	Inner_1RB_Right	26.89	25.43	29.23	23.13	PASS
N77-3700-3980	30	50	DFT-PI2BPSK	H	Outer_Full	24.87	24.01	27.47	21.37	PASS
N77-3700-3980	30	50	DFT-QPSK	H	Inner_1RB_Left	26.85	25.57	29.27	23.17	PASS
N77-3700-3980	30	50	DFT-QPSK	H	Inner_1RB_Right	26.86	25.71	29.33	23.23	PASS
N77-3700-3980	30	50	DFT-QPSK	H	Outer_Full	24.79	23.57	27.23	21.13	PASS
N77-3700-3980	30	50	DFT-16QAM	H	Inner_1RB_Left	26.31	24.54	28.52	22.42	PASS
N77-3700-3980	30	50	DFT-16QAM	H	Inner_1RB_Right	26.02	24.95	28.53	22.43	PASS
N77-3700-3980	30	50	DFT-16QAM	H	Outer_Full	23.84	22.49	26.23	20.13	PASS
N77-3700-3980	30	50	DFT-64QAM	H	Inner_1RB_Left	25.51	24.4	28	21.9	PASS
N77-3700-3980	30	50	DFT-64QAM	H	Inner_1RB_Right	25.41	24.3	27.9	21.8	PASS
N77-3700-3980	30	50	DFT-64QAM	H	Outer_Full	23.76	22.51	26.19	20.09	PASS
N77-3700-3980	30	50	DFT-256QAM	H	Inner_1RB_Left	23.79	22.67	26.28	20.18	PASS
N77-3700-3980	30	50	DFT-256QAM	H	Inner_1RB_Right	23.83	22.55	26.25	20.15	PASS
N77-3700-3980	30	50	DFT-256QAM	H	Outer_Full	23.36	21.87	25.69	19.59	PASS
N77-3700-3980	30	50	CP-QPSK	H	Inner_1RB_Left	24.79	23.11	27.04	20.94	PASS
N77-3700-3980	30	50	CP-QPSK	H	Inner_1RB_Right	25.2	23.63	27.5	21.4	PASS
N77-3700-3980	30	50	CP-QPSK	H	Outer_Full	22.54	20.93	24.82	18.72	PASS
N77-3700-3980	30	50	CP-16QAM	H	Inner_1RB_Left	24.35	22.8	26.65	20.55	PASS
N77-3700-3980	30	50	CP-16QAM	H	Inner_1RB_Right	24.74	23.15	27.03	20.93	PASS
N77-3700-3980	30	50	CP-16QAM	H	Outer_Full	22.57	21.05	24.89	18.79	PASS
N77-3700-3980	30	50	CP-64QAM	H	Inner_1RB_Left	22.46	20.99	24.8	18.7	PASS
N77-3700-3980	30	50	CP-64QAM	H	Inner_1RB_Right	22.88	21.61	25.3	19.2	PASS
N77-3700-3980	30	50	CP-64QAM	H	Outer_Full	21.93	20.54	24.3	18.2	PASS
N77-3700-3980	30	50	CP-256QAM	H	Inner_1RB_Left	19.01	17.64	21.39	15.29	PASS
N77-3700-3980	30	50	CP-256QAM	H	Inner_1RB_Right	19.36	18.1	21.79	15.69	PASS
N77-3700-3980	30	50	CP-256QAM	H	Outer_Full	18.94	17.56	21.31	15.21	PASS
N77-3700-3980	30	60	DFT-PI2BPSK	L	Inner_1RB_Left	26.99	25.7	29.4	23.3	PASS
N77-3700-3980	30	60	DFT-PI2BPSK	L	Inner_1RB_Right	26.81	25.35	29.15	23.05	PASS



Unless otherwise agreed in writing, this document is issued by the Company subject to its General Conditions of Service printed overleaf, available on request or accessible at <http://www.sgs.com/en/Terms-and-Conditions.aspx> and, for electronic format documents, subject to Terms and Conditions for Electronic Documents at <http://www.sgs.com/en/Terms-and-Conditions/Terms-e-Documents.aspx>. Attention is drawn to the limitation of liability, indemnification and jurisdiction issues defined therein. Any holder of this document is advised that information contained hereon reflects the Company's findings at the time of its intervention only and within the limits of Client's instructions, if any. The Company's sole responsibility is to its Client and this document does not exonerate parties to a transaction from exercising all their rights and obligations under the transaction documents. This document cannot be reproduced except in full, without prior written approval of the Company. Any unauthorized alteration, forgery or falsification of the content or appearance of this document is unlawful and offenders may be prosecuted to the fullest extent of the law. Unless otherwise stated the results shown in this test report refer only to the sample(s) tested and such sample(s) are retained for 30 days only.

Attention: To check the authenticity of testing/inspection report & certificate, please contact us at telephone: (86-755) 8307 1443, or email: CN.Doccheck@sgs.com

South of No. 6 Plant, No. 1, Pansheng Road, Suzhou Industrial Park, Suzhou Area, China (Jiangsu) Pilot Free Trade Zone 215000 t (86-512) 62992980 www.sgs.com.cn
 中国·苏州·中国(江苏)自由贸易试验区苏州片区苏州工业园区海胜路1号的6号厂房南楼 邮编: 215000 t (86-512) 62992980 sgs.china@sgs.com



Table with 11 columns: Test ID, Sample No., Lot No., Modulation, Bandwidth, Test Method, Mean, Std Dev, Min, Max, Result. Rows include various modulation types like DFT-PI2BPSK, DFT-QPSK, DFT-16QAM, DFT-64QAM, DFT-256QAM, CP-QPSK, and CP-16QAM/CP-64QAM/CP-256QAM.



Unless otherwise agreed in writing, this document is issued by the Company subject to its General Conditions of Service printed overleaf... Attention: To check the authenticity of testing/inspection report & certificate, please contact us at telephone: (86-755) 8307 1443, or email: CN.Doccheck@sgs.com



Report No.: SEWM2304000122RG02

Rev.: 01

Page: 30 of 307

N77-3700-3980	30	60	DFT-256QAM	M	Inner_1RB_Right	23.74	22.46	26.16	20.06	PASS
N77-3700-3980	30	60	DFT-256QAM	M	Outer_Full	23.33	21.84	25.66	19.56	PASS
N77-3700-3980	30	60	CP-QPSK	M	Inner_1RB_Left	25.06	23.61	27.41	21.31	PASS
N77-3700-3980	30	60	CP-QPSK	M	Inner_1RB_Right	24.95	23.61	27.34	21.24	PASS
N77-3700-3980	30	60	CP-QPSK	M	Outer_Full	22.75	21.26	25.08	18.98	PASS
N77-3700-3980	30	60	CP-16QAM	M	Inner_1RB_Left	24.8	23.42	27.17	21.07	PASS
N77-3700-3980	30	60	CP-16QAM	M	Inner_1RB_Right	24.65	23.58	27.16	21.06	PASS
N77-3700-3980	30	60	CP-16QAM	M	Outer_Full	22.59	21.37	25.03	18.93	PASS
N77-3700-3980	30	60	CP-64QAM	M	Inner_1RB_Left	22.75	21.55	25.2	19.1	PASS
N77-3700-3980	30	60	CP-64QAM	M	Inner_1RB_Right	22.74	21.76	25.29	19.19	PASS
N77-3700-3980	30	60	CP-64QAM	M	Outer_Full	22.13	20.95	24.59	18.49	PASS
N77-3700-3980	30	60	CP-256QAM	M	Inner_1RB_Left	19	18.25	21.65	15.55	PASS
N77-3700-3980	30	60	CP-256QAM	M	Inner_1RB_Right	19.03	17.97	21.54	15.44	PASS
N77-3700-3980	30	60	CP-256QAM	M	Outer_Full	19.17	18	21.63	15.53	PASS
N77-3700-3980	30	60	DFT-PI2BPSK	H	Inner_1RB_Left	26.59	25.43	29.06	22.96	PASS
N77-3700-3980	30	60	DFT-PI2BPSK	H	Inner_1RB_Right	26.84	25.38	29.18	23.08	PASS
N77-3700-3980	30	60	DFT-PI2BPSK	H	Outer_Full	24.98	24.12	27.58	21.48	PASS
N77-3700-3980	30	60	DFT-QPSK	H	Inner_1RB_Left	26.98	25.7	29.4	23.3	PASS
N77-3700-3980	30	60	DFT-QPSK	H	Inner_1RB_Right	26.72	25.57	29.19	23.09	PASS
N77-3700-3980	30	60	DFT-QPSK	H	Outer_Full	24.87	23.65	27.31	21.21	PASS
N77-3700-3980	30	60	DFT-16QAM	H	Inner_1RB_Left	26.26	24.49	28.47	22.37	PASS
N77-3700-3980	30	60	DFT-16QAM	H	Inner_1RB_Right	26.06	24.99	28.57	22.47	PASS
N77-3700-3980	30	60	DFT-16QAM	H	Outer_Full	23.88	22.53	26.27	20.17	PASS
N77-3700-3980	30	60	DFT-64QAM	H	Inner_1RB_Left	25.62	24.51	28.11	22.01	PASS
N77-3700-3980	30	60	DFT-64QAM	H	Inner_1RB_Right	25.52	24.41	28.01	21.91	PASS
N77-3700-3980	30	60	DFT-64QAM	H	Outer_Full	23.74	22.49	26.17	20.07	PASS
N77-3700-3980	30	60	DFT-256QAM	H	Inner_1RB_Left	23.82	22.7	26.31	20.21	PASS
N77-3700-3980	30	60	DFT-256QAM	H	Inner_1RB_Right	23.75	22.47	26.17	20.07	PASS
N77-3700-3980	30	60	DFT-256QAM	H	Outer_Full	23.34	21.85	25.67	19.57	PASS
N77-3700-3980	30	60	CP-QPSK	H	Inner_1RB_Left	24.88	23.39	27.21	21.11	PASS
N77-3700-3980	30	60	CP-QPSK	H	Inner_1RB_Right	25.14	23.74	27.51	21.41	PASS
N77-3700-3980	30	60	CP-QPSK	H	Outer_Full	22.54	20.99	24.84	18.74	PASS
N77-3700-3980	30	60	CP-16QAM	H	Inner_1RB_Left	24.57	23.04	26.88	20.78	PASS
N77-3700-3980	30	60	CP-16QAM	H	Inner_1RB_Right	24.76	23.22	27.07	20.97	PASS
N77-3700-3980	30	60	CP-16QAM	H	Outer_Full	22.48	21.06	24.84	18.74	PASS
N77-3700-3980	30	60	CP-64QAM	H	Inner_1RB_Left	22.71	21.21	25.03	18.93	PASS
N77-3700-3980	30	60	CP-64QAM	H	Inner_1RB_Right	23	21.51	25.33	19.23	PASS
N77-3700-3980	30	60	CP-64QAM	H	Outer_Full	22.08	20.6	24.41	18.31	PASS



Unless otherwise agreed in writing, this document is issued by the Company subject to its General Conditions of Service printed overleaf, available on request or accessible at <http://www.sgs.com/en/Terms-and-Conditions.aspx> and, for electronic format documents, subject to Terms and Conditions for Electronic Documents at <http://www.sgs.com/en/Terms-and-Conditions/Terms-e-Documents.aspx>. Attention is drawn to the limitation of liability, indemnification and jurisdiction issues defined therein. Any holder of this document is advised that information contained hereon reflects the Company's findings at the time of its intervention only and within the limits of Client's instructions, if any. The Company's sole responsibility is to its Client and this document does not exonerate parties to a transaction from exercising all their rights and obligations under the transaction documents. This document cannot be reproduced except in full, without prior written approval of the Company. Any unauthorized alteration, forgery or falsification of the content or appearance of this document is unlawful and offenders may be prosecuted to the fullest extent of the law. Unless otherwise stated the results shown in this test report refer only to the sample(s) tested and such sample(s) are retained for 30 days only.

Attention: To check the authenticity of testing/inspection report & certificate, please contact us at telephone: (86-755) 8307 1443, or email: CN.Doccheck@sgs.com

South of No. 6 Plant, No. 1, Pansheng Road, Suzhou Industrial Park, Suzhou Area, China (Jiangsu) Pilot Free Trade Zone 215000 t (86-512) 62992980 www.sgs.com.cn
 中国·苏州·中国(江苏)自由贸易试验区苏州片区苏州工业园区海胜路1号的6号厂房南楼 邮编: 215000 t (86-512) 62992980 sgs.china@sgs.com



Report No.: SEWM2304000122RG02

Rev.: 01

Page: 31 of 307

N77-3700-3980	30	60	CP-256QAM	H	Inner_1RB_Left	19.09	17.7	21.46	15.36	PASS
N77-3700-3980	30	60	CP-256QAM	H	Inner_1RB_Right	19.19	18.03	21.66	15.56	PASS
N77-3700-3980	30	60	CP-256QAM	H	Outer_Full	19.12	17.64	21.45	15.35	PASS
N77-3700-3980	30	70	DFT-PI2BPSK	L	Inner_1RB_Left	26.73	25.64	29.23	23.13	PASS
N77-3700-3980	30	70	DFT-PI2BPSK	L	Inner_1RB_Right	26.88	25.42	29.22	23.12	PASS
N77-3700-3980	30	70	DFT-PI2BPSK	L	Outer_Full	24.97	24.11	27.57	21.47	PASS
N77-3700-3980	30	70	DFT-QPSK	L	Inner_1RB_Left	26.84	25.56	29.26	23.16	PASS
N77-3700-3980	30	70	DFT-QPSK	L	Inner_1RB_Right	26.84	25.69	29.31	23.21	PASS
N77-3700-3980	30	70	DFT-QPSK	L	Outer_Full	24.74	23.52	27.18	21.08	PASS
N77-3700-3980	30	70	DFT-16QAM	L	Inner_1RB_Left	26.26	24.49	28.47	22.37	PASS
N77-3700-3980	30	70	DFT-16QAM	L	Inner_1RB_Right	25.98	24.91	28.49	22.39	PASS
N77-3700-3980	30	70	DFT-16QAM	L	Outer_Full	23.86	22.51	26.25	20.15	PASS
N77-3700-3980	30	70	DFT-64QAM	L	Inner_1RB_Left	25.64	24.53	28.13	22.03	PASS
N77-3700-3980	30	70	DFT-64QAM	L	Inner_1RB_Right	25.37	24.26	27.86	21.76	PASS
N77-3700-3980	30	70	DFT-64QAM	L	Outer_Full	23.87	22.62	26.3	20.2	PASS
N77-3700-3980	30	70	DFT-256QAM	L	Inner_1RB_Left	23.84	22.72	26.33	20.23	PASS
N77-3700-3980	30	70	DFT-256QAM	L	Inner_1RB_Right	23.79	22.51	26.21	20.11	PASS
N77-3700-3980	30	70	DFT-256QAM	L	Outer_Full	23.43	21.94	25.76	19.66	PASS
N77-3700-3980	30	70	CP-QPSK	L	Inner_1RB_Left	17.64	23.57	24.56	18.46	PASS
N77-3700-3980	30	70	CP-QPSK	L	Inner_1RB_Right	24.82	23.53	27.23	21.13	PASS
N77-3700-3980	30	70	CP-QPSK	L	Outer_Full	22.41	21.12	24.82	18.72	PASS
N77-3700-3980	30	70	CP-16QAM	L	Inner_1RB_Left	24.34	23.05	26.75	20.65	PASS
N77-3700-3980	30	70	CP-16QAM	L	Inner_1RB_Right	24.37	22.95	26.73	20.63	PASS
N77-3700-3980	30	70	CP-16QAM	L	Outer_Full	22.47	21.08	24.84	18.74	PASS
N77-3700-3980	30	70	CP-64QAM	L	Inner_1RB_Left	22.44	21.31	24.92	18.82	PASS
N77-3700-3980	30	70	CP-64QAM	L	Inner_1RB_Right	22.59	21.1	24.92	18.82	PASS
N77-3700-3980	30	70	CP-64QAM	L	Outer_Full	21.96	20.6	24.34	18.24	PASS
N77-3700-3980	30	70	CP-256QAM	L	Inner_1RB_Left	18.76	17.64	21.25	15.15	PASS
N77-3700-3980	30	70	CP-256QAM	L	Inner_1RB_Right	19.13	17.36	21.34	15.24	PASS
N77-3700-3980	30	70	CP-256QAM	L	Outer_Full	18.99	17.6	21.36	15.26	PASS
N77-3700-3980	30	70	DFT-PI2BPSK	M	Inner_1RB_Left	26.97	25.61	29.35	23.25	PASS
N77-3700-3980	30	70	DFT-PI2BPSK	M	Inner_1RB_Right	26.8	25.34	29.14	23.04	PASS
N77-3700-3980	30	70	DFT-PI2BPSK	M	Outer_Full	24.98	24.12	27.58	21.48	PASS
N77-3700-3980	30	70	DFT-QPSK	M	Inner_1RB_Left	26.88	25.6	29.3	23.2	PASS
N77-3700-3980	30	70	DFT-QPSK	M	Inner_1RB_Right	26.72	25.57	29.19	23.09	PASS
N77-3700-3980	30	70	DFT-QPSK	M	Outer_Full	24.76	23.54	27.2	21.1	PASS
N77-3700-3980	30	70	DFT-16QAM	M	Inner_1RB_Left	26.15	24.38	28.36	22.26	PASS
N77-3700-3980	30	70	DFT-16QAM	M	Inner_1RB_Right	26.04	24.97	28.55	22.45	PASS



Unless otherwise agreed in writing, this document is issued by the Company subject to its General Conditions of Service printed overleaf, available on request or accessible at <http://www.sgs.com/en/Terms-and-Conditions.aspx> and, for electronic format documents, subject to Terms and Conditions for Electronic Documents at <http://www.sgs.com/en/Terms-and-Conditions/Terms-e-Documents.aspx>. Attention is drawn to the limitation of liability, indemnification and jurisdiction issues defined therein. Any holder of this document is advised that information contained hereon reflects the Company's findings at the time of its intervention only and within the limits of Client's instructions, if any. The Company's sole responsibility is to its Client and this document does not exonerate parties to a transaction from exercising all their rights and obligations under the transaction documents. This document cannot be reproduced except in full, without prior written approval of the Company. Any unauthorized alteration, forgery or falsification of the content or appearance of this document is unlawful and offenders may be prosecuted to the fullest extent of the law. Unless otherwise stated the results shown in this test report refer only to the sample(s) tested and such sample(s) are retained for 30 days only.

Attention: To check the authenticity of testing/inspection report & certificate, please contact us at telephone: (86-755) 8307 1443, or email: CN.Doccheck@sgs.com

South of No. 6 Plant, No. 1, Runsheng Road, Suzhou Industrial Park, Suzhou Area, China (Jiangsu) Pilot Free Trade Zone 215000 t (86-512) 62992980 www.sgs.com.cn
 中国·苏州·中国(江苏)自由贸易试验区苏州片区苏州工业园区润胜路1号的6号厂房南楼 邮编: 215000 t (86-512) 62992980 sgs.china@sgs.com



Table with 11 columns: Test ID, Sample No., Lot No., Test Method, Modulation, Location, and 5 Pass/Fail values. Contains 48 rows of test data.



Unless otherwise agreed in writing, this document is issued by the Company subject to its General Conditions of Service printed overleaf... Attention: To check the authenticity of testing/inspection report & certificate, please contact us at telephone: (86-755) 8307 1443, or email: CN.Doccheck@sgs.com



Table with 11 columns: Test ID, Sample No., Lot No., Standard, Method, Location, and 5 numerical results, and a Pass/Fail status. It contains 40 rows of test data.



Unless otherwise agreed in writing, this document is issued by the Company subject to its General Conditions of Service printed overleaf, available on request or accessible at http://www.sgs.com/en/Terms-and-Conditions.aspx and, for electronic format documents, subject to Terms and Conditions for Electronic Documents at http://www.sgs.com/en/Terms-and-Conditions/Terms-e-Documents.aspx. Attention is drawn to the limitation of liability, indemnification and jurisdiction issues defined therein. Any holder of this document is advised that information contained hereon reflects the Company's findings at the time of its intervention only and within the limits of Client's instructions, if any. The Company's sole responsibility is to its Client and this document does not exonerate parties to a transaction from exercising all their rights and obligations under the transaction documents. This document cannot be reproduced except in full, without prior written approval of the Company. Any unauthorized alteration, forgery or falsification of the content or appearance of this document is unlawful and offenders may be prosecuted to the fullest extent of the law. Unless otherwise stated the results shown in this test report refer only to the sample(s) tested and such sample(s) are retained for 30 days only. Attention: To check the authenticity of testing/inspection report & certificate, please contact us at telephone: (86-755) 8307 1443, or email: CN.Doccheck@sgs.com

South of No. 6 Plant, No. 1, Pansheng Road, Suzhou Industrial Park, Suzhou Area, China (Jiangsu) Pilot Free Trade Zone 215000
中国·苏州·中国(江苏)自由贸易试验区苏州片区苏州工业园区海胜路1号的6号厂房南楼 邮编: 215000

t (86-512) 62992980 www.sgs.com.cn
t (86-512) 62992980 sgs.china@sgs.com



Table with 11 columns: Test ID, Sample No., Lot No., Modulation, Modulation, Carrier, Power, Power, Power, Power, Result. Rows include various modulation types like DFT-QPSK, DFT-16QAM, DFT-64QAM, DFT-256QAM, CP-QPSK, CP-16QAM, CP-64QAM, CP-256QAM, DFT-PI2BPSK.



Unless otherwise agreed in writing, this document is issued by the Company subject to its General Conditions of Service printed overleaf... Attention: To check the authenticity of testing/inspection report & certificate, please contact us at telephone: (86-755) 8307 1443, or email: CN.Doccheck@sgs.com



Report No.: SEWM2304000122RG02

Rev.: 01

Page: 35 of 307

N77-3700-3980	30	80	DFT-256QAM	H	Outer_Full	23.48	21.99	25.81	19.71	PASS
N77-3700-3980	30	80	CP-QPSK	H	Inner_1RB_Left	25.15	23.66	27.48	21.38	PASS
N77-3700-3980	30	80	CP-QPSK	H	Inner_1RB_Right	25.13	23.4	27.36	21.26	PASS
N77-3700-3980	30	80	CP-QPSK	H	Outer_Full	22.55	20.77	24.76	18.66	PASS
N77-3700-3980	30	80	CP-16QAM	H	Inner_1RB_Left	24.51	23.16	26.9	20.8	PASS
N77-3700-3980	30	80	CP-16QAM	H	Inner_1RB_Right	24.54	22.91	26.81	20.71	PASS
N77-3700-3980	30	80	CP-16QAM	H	Outer_Full	22.48	20.83	24.74	18.64	PASS
N77-3700-3980	30	80	CP-64QAM	H	Inner_1RB_Left	22.65	21.33	25.05	18.95	PASS
N77-3700-3980	30	80	CP-64QAM	H	Inner_1RB_Right	22.67	21.17	24.99	18.89	PASS
N77-3700-3980	30	80	CP-64QAM	H	Outer_Full	22.09	20.45	24.36	18.26	PASS
N77-3700-3980	30	80	CP-256QAM	H	Inner_1RB_Left	18.76	17.49	21.18	15.08	PASS
N77-3700-3980	30	80	CP-256QAM	H	Inner_1RB_Right	18.92	17.87	21.44	15.34	PASS
N77-3700-3980	30	80	CP-256QAM	H	Outer_Full	19.1	17.47	21.37	15.27	PASS
N77-3700-3980	30	90	DFT-PI2BPSK	L	Inner_1RB_Left	26.79	25.68	29.28	23.18	PASS
N77-3700-3980	30	90	DFT-PI2BPSK	L	Inner_1RB_Right	26.86	25.4	29.2	23.1	PASS
N77-3700-3980	30	90	DFT-PI2BPSK	L	Outer_Full	24.9	24.04	27.5	21.4	PASS
N77-3700-3980	30	90	DFT-QPSK	L	Inner_1RB_Left	26.85	25.57	29.27	23.17	PASS
N77-3700-3980	30	90	DFT-QPSK	L	Inner_1RB_Right	26.71	25.56	29.18	23.08	PASS
N77-3700-3980	30	90	DFT-QPSK	L	Outer_Full	24.67	23.45	27.11	21.01	PASS
N77-3700-3980	30	90	DFT-16QAM	L	Inner_1RB_Left	26.26	24.49	28.47	22.37	PASS
N77-3700-3980	30	90	DFT-16QAM	L	Inner_1RB_Right	26.11	25.04	28.62	22.52	PASS
N77-3700-3980	30	90	DFT-16QAM	L	Outer_Full	23.89	22.54	26.28	20.18	PASS
N77-3700-3980	30	90	DFT-64QAM	L	Inner_1RB_Left	25.62	24.51	28.11	22.01	PASS
N77-3700-3980	30	90	DFT-64QAM	L	Inner_1RB_Right	25.37	24.26	27.86	21.76	PASS
N77-3700-3980	30	90	DFT-64QAM	L	Outer_Full	23.84	22.59	26.27	20.17	PASS
N77-3700-3980	30	90	DFT-256QAM	L	Inner_1RB_Left	23.79	22.67	26.28	20.18	PASS
N77-3700-3980	30	90	DFT-256QAM	L	Inner_1RB_Right	23.74	22.46	26.16	20.06	PASS
N77-3700-3980	30	90	DFT-256QAM	L	Outer_Full	23.44	21.95	25.77	19.67	PASS
N77-3700-3980	30	90	CP-QPSK	L	Inner_1RB_Left	24.71	23.45	27.14	21.04	PASS
N77-3700-3980	30	90	CP-QPSK	L	Inner_1RB_Right	24.8	23.5	27.21	21.11	PASS
N77-3700-3980	30	90	CP-QPSK	L	Outer_Full	22.5	21.09	24.86	18.76	PASS
N77-3700-3980	30	90	CP-16QAM	L	Inner_1RB_Left	24.17	22.92	26.6	20.5	PASS
N77-3700-3980	30	90	CP-16QAM	L	Inner_1RB_Right	24.58	22.98	26.86	20.76	PASS
N77-3700-3980	30	90	CP-16QAM	L	Outer_Full	22.47	21.06	24.83	18.73	PASS
N77-3700-3980	30	90	CP-64QAM	L	Inner_1RB_Left	22.58	21.14	24.93	18.83	PASS
N77-3700-3980	30	90	CP-64QAM	L	Inner_1RB_Right	22.58	21.19	24.95	18.85	PASS
N77-3700-3980	30	90	CP-64QAM	L	Outer_Full	21.96	20.56	24.33	18.23	PASS
N77-3700-3980	30	90	CP-256QAM	L	Inner_1RB_Left	18.73	18	21.39	15.29	PASS



Unless otherwise agreed in writing, this document is issued by the Company subject to its General Conditions of Service printed overleaf, available on request or accessible at <http://www.sgs.com/en/Terms-and-Conditions.aspx> and, for electronic format documents, subject to Terms and Conditions for Electronic Documents at <http://www.sgs.com/en/Terms-and-Conditions/Terms-e-Documents.aspx>. Attention is drawn to the limitation of liability, indemnification and jurisdiction issues defined therein. Any holder of this document is advised that information contained hereon reflects the Company's findings at the time of its intervention only and within the limits of Client's instructions, if any. The Company's sole responsibility is to its Client and this document does not exonerate parties to a transaction from exercising all their rights and obligations under the transaction documents. This document cannot be reproduced except in full, without prior written approval of the Company. Any unauthorized alteration, forgery or falsification of the content or appearance of this document is unlawful and offenders may be prosecuted to the fullest extent of the law. Unless otherwise stated the results shown in this test report refer only to the sample(s) tested and such sample(s) are retained for 30 days only.

Attention: To check the authenticity of testing/inspection report & certificate, please contact us at telephone: (86-755) 8307 1443, or email: CN.Doccheck@sgs.com

South of No. 6 Plant, No. 1, Pansheng Road, Suzhou Industrial Park, Suzhou Area, China (Jiangsu) Pilot Free Trade Zone 215000 t (86-512) 62992980 www.sgs.com.cn
 中国·苏州·中国(江苏)自由贸易试验区苏州片区苏州工业园区海胜路1号的6号厂房南楼 邮编: 215000 t (86-512) 62992980 sgs.china@sgs.com



Report No.: SEWM2304000122RG02

Rev.: 01

Page: 36 of 307

N77-3700-3980	30	90	CP-256QAM	L	Inner_1RB_Right	19.2	17.43	21.41	15.31	PASS
N77-3700-3980	30	90	CP-256QAM	L	Outer_Full	19.01	17.58	21.36	15.26	PASS
N77-3700-3980	30	90	DFT-PI2BPSK	M	Inner_1RB_Left	27.03	25.51	29.35	23.25	PASS
N77-3700-3980	30	90	DFT-PI2BPSK	M	Inner_1RB_Right	26.81	25.35	29.15	23.05	PASS
N77-3700-3980	30	90	DFT-PI2BPSK	M	Outer_Full	24.83	23.97	27.43	21.33	PASS
N77-3700-3980	30	90	DFT-QPSK	M	Inner_1RB_Left	26.88	25.6	29.3	23.2	PASS
N77-3700-3980	30	90	DFT-QPSK	M	Inner_1RB_Right	26.81	25.66	29.28	23.18	PASS
N77-3700-3980	30	90	DFT-QPSK	M	Outer_Full	24.88	23.66	27.32	21.22	PASS
N77-3700-3980	30	90	DFT-16QAM	M	Inner_1RB_Left	26.23	24.46	28.44	22.34	PASS
N77-3700-3980	30	90	DFT-16QAM	M	Inner_1RB_Right	25.97	24.9	28.48	22.38	PASS
N77-3700-3980	30	90	DFT-16QAM	M	Outer_Full	23.87	22.52	26.26	20.16	PASS
N77-3700-3980	30	90	DFT-64QAM	M	Inner_1RB_Left	25.59	24.48	28.08	21.98	PASS
N77-3700-3980	30	90	DFT-64QAM	M	Inner_1RB_Right	25.36	24.25	27.85	21.75	PASS
N77-3700-3980	30	90	DFT-64QAM	M	Outer_Full	23.82	22.57	26.25	20.15	PASS
N77-3700-3980	30	90	DFT-256QAM	M	Inner_1RB_Left	23.7	22.58	26.19	20.09	PASS
N77-3700-3980	30	90	DFT-256QAM	M	Inner_1RB_Right	23.74	22.46	26.16	20.06	PASS
N77-3700-3980	30	90	DFT-256QAM	M	Outer_Full	23.52	22.03	25.85	19.75	PASS
N77-3700-3980	30	90	CP-QPSK	M	Inner_1RB_Left	24.86	23.53	27.26	21.16	PASS
N77-3700-3980	30	90	CP-QPSK	M	Inner_1RB_Right	24.69	23.2	27.02	20.92	PASS
N77-3700-3980	30	90	CP-QPSK	M	Outer_Full	22.5	21.2	24.91	18.81	PASS
N77-3700-3980	30	90	CP-16QAM	M	Inner_1RB_Left	24.52	22.76	26.74	20.64	PASS
N77-3700-3980	30	90	CP-16QAM	M	Inner_1RB_Right	24.37	22.72	26.63	20.53	PASS
N77-3700-3980	30	90	CP-16QAM	M	Outer_Full	22.53	21.19	24.92	18.82	PASS
N77-3700-3980	30	90	CP-64QAM	M	Inner_1RB_Left	22.51	21.14	24.89	18.79	PASS
N77-3700-3980	30	90	CP-64QAM	M	Inner_1RB_Right	22.49	20.91	24.78	18.68	PASS
N77-3700-3980	30	90	CP-64QAM	M	Outer_Full	21.96	20.69	24.38	18.28	PASS
N77-3700-3980	30	90	CP-256QAM	M	Inner_1RB_Left	18.88	17.55	21.28	15.18	PASS
N77-3700-3980	30	90	CP-256QAM	M	Inner_1RB_Right	18.88	17.28	21.16	15.06	PASS
N77-3700-3980	30	90	CP-256QAM	M	Outer_Full	18.94	17.74	21.39	15.29	PASS
N77-3700-3980	30	90	DFT-PI2BPSK	H	Inner_1RB_Left	26.72	25.64	29.22	23.12	PASS
N77-3700-3980	30	90	DFT-PI2BPSK	H	Inner_1RB_Right	26.81	25.35	29.15	23.05	PASS
N77-3700-3980	30	90	DFT-PI2BPSK	H	Outer_Full	24.94	24.08	27.54	21.44	PASS
N77-3700-3980	30	90	DFT-QPSK	H	Inner_1RB_Left	26.87	25.59	29.29	23.19	PASS
N77-3700-3980	30	90	DFT-QPSK	H	Inner_1RB_Right	26.91	25.76	29.38	23.28	PASS
N77-3700-3980	30	90	DFT-QPSK	H	Outer_Full	24.81	23.59	27.25	21.15	PASS
N77-3700-3980	30	90	DFT-16QAM	H	Inner_1RB_Left	26.3	24.53	28.51	22.41	PASS
N77-3700-3980	30	90	DFT-16QAM	H	Inner_1RB_Right	26	24.93	28.51	22.41	PASS
N77-3700-3980	30	90	DFT-16QAM	H	Outer_Full	23.92	22.57	26.31	20.21	PASS



Unless otherwise agreed in writing, this document is issued by the Company subject to its General Conditions of Service printed overleaf, available on request or accessible at <http://www.sgs.com/en/Terms-and-Conditions.aspx> and, for electronic format documents, subject to Terms and Conditions for Electronic Documents at <http://www.sgs.com/en/Terms-and-Conditions/Terms-e-Documents.aspx>. Attention is drawn to the limitation of liability, indemnification and jurisdiction issues defined therein. Any holder of this document is advised that information contained hereon reflects the Company's findings at the time of its intervention only and within the limits of Client's instructions, if any. The Company's sole responsibility is to its Client and this document does not exonerate parties to a transaction from exercising all their rights and obligations under the transaction documents. This document cannot be reproduced except in full, without prior written approval of the Company. Any unauthorized alteration, forgery or falsification of the content or appearance of this document is unlawful and offenders may be prosecuted to the fullest extent of the law. Unless otherwise stated the results shown in this test report refer only to the sample(s) tested and such sample(s) are retained for 30 days only.

Attention: To check the authenticity of testing/inspection report & certificate, please contact us at telephone: (86-755) 8307 1443, or email: CN.Doccheck@sgs.com

South of No. 6 Plant, No. 1, Pansheng Road, Suzhou Industrial Park, Suzhou Area, China (Jiangsu) Pilot Free Trade Zone 215000 t (86-512) 62992980 www.sgs.com.cn
 中国·苏州·中国(江苏)自由贸易试验区苏州片区苏州工业园区海胜路1号厂房南楼 邮编: 215000 t (86-512) 62992980 sgs.china@sgs.com



Report No.: SEWM2304000122RG02

Rev.: 01

Page: 37 of 307

N77-3700-3980	30	90	DFT-64QAM	H	Inner_1RB_Left	25.45	24.34	27.94	21.84	PASS
N77-3700-3980	30	90	DFT-64QAM	H	Inner_1RB_Right	25.52	24.41	28.01	21.91	PASS
N77-3700-3980	30	90	DFT-64QAM	H	Outer_Full	23.88	22.63	26.31	20.21	PASS
N77-3700-3980	30	90	DFT-256QAM	H	Inner_1RB_Left	23.66	22.54	26.15	20.05	PASS
N77-3700-3980	30	90	DFT-256QAM	H	Inner_1RB_Right	23.68	22.4	26.1	20	PASS
N77-3700-3980	30	90	DFT-256QAM	H	Outer_Full	23.54	22.05	25.87	19.77	PASS
N77-3700-3980	30	90	CP-QPSK	H	Inner_1RB_Left	24.56	22.94	26.84	20.74	PASS
N77-3700-3980	30	90	CP-QPSK	H	Inner_1RB_Right	25.1	23.51	27.39	21.29	PASS
N77-3700-3980	30	90	CP-QPSK	H	Outer_Full	22.45	20.8	24.71	18.61	PASS
N77-3700-3980	30	90	CP-16QAM	H	Inner_1RB_Left	24.24	22.47	26.45	20.35	PASS
N77-3700-3980	30	90	CP-16QAM	H	Inner_1RB_Right	24.72	22.82	26.88	20.78	PASS
N77-3700-3980	30	90	CP-16QAM	H	Outer_Full	22.52	20.84	24.77	18.67	PASS
N77-3700-3980	30	90	CP-64QAM	H	Inner_1RB_Left	22.22	20.61	24.5	18.4	PASS
N77-3700-3980	30	90	CP-64QAM	H	Inner_1RB_Right	22.81	21.18	25.08	18.98	PASS
N77-3700-3980	30	90	CP-64QAM	H	Outer_Full	21.99	20.42	24.29	18.19	PASS
N77-3700-3980	30	90	CP-256QAM	H	Inner_1RB_Left	18.87	16.91	21.01	14.91	PASS
N77-3700-3980	30	90	CP-256QAM	H	Inner_1RB_Right	19.03	17.45	21.32	15.22	PASS
N77-3700-3980	30	90	CP-256QAM	H	Outer_Full	18.99	17.45	21.3	15.2	PASS
N77-3700-3980	30	100	DFT-PI2BPSK	L	Inner_1RB_Left	26.68	25.39	29.09	22.99	PASS
N77-3700-3980	30	100	DFT-PI2BPSK	L	Inner_1RB_Right	26.88	25.42	29.22	23.12	PASS
N77-3700-3980	30	100	DFT-PI2BPSK	L	Outer_Full	24.94	24.08	27.54	21.44	PASS
N77-3700-3980	30	100	DFT-QPSK	L	Inner_1RB_Left	26.88	25.6	29.3	23.2	PASS
N77-3700-3980	30	100	DFT-QPSK	L	Inner_1RB_Right	26.74	25.59	29.21	23.11	PASS
N77-3700-3980	30	100	DFT-QPSK	L	Outer_Full	24.75	23.53	27.19	21.09	PASS
N77-3700-3980	30	100	DFT-16QAM	L	Inner_1RB_Left	26.21	24.44	28.42	22.32	PASS
N77-3700-3980	30	100	DFT-16QAM	L	Inner_1RB_Right	26.12	25.05	28.63	22.53	PASS
N77-3700-3980	30	100	DFT-16QAM	L	Outer_Full	23.9	22.55	26.29	20.19	PASS
N77-3700-3980	30	100	DFT-64QAM	L	Inner_1RB_Left	25.53	24.42	28.02	21.92	PASS
N77-3700-3980	30	100	DFT-64QAM	L	Inner_1RB_Right	25.44	24.33	27.93	21.83	PASS
N77-3700-3980	30	100	DFT-64QAM	L	Outer_Full	23.79	22.54	26.22	20.12	PASS
N77-3700-3980	30	100	DFT-256QAM	L	Inner_1RB_Left	23.81	22.69	26.3	20.2	PASS
N77-3700-3980	30	100	DFT-256QAM	L	Inner_1RB_Right	23.84	22.56	26.26	20.16	PASS
N77-3700-3980	30	100	DFT-256QAM	L	Outer_Full	23.39	21.9	25.72	19.62	PASS
N77-3700-3980	30	100	CP-QPSK	L	Inner_1RB_Left	24.69	23.37	27.09	20.99	PASS
N77-3700-3980	30	100	CP-QPSK	L	Inner_1RB_Right	24.97	23.45	27.29	21.19	PASS
N77-3700-3980	30	100	CP-QPSK	L	Outer_Full	22.38	21.09	24.79	18.69	PASS
N77-3700-3980	30	100	CP-16QAM	L	Inner_1RB_Left	24.37	23.14	26.81	20.71	PASS
N77-3700-3980	30	100	CP-16QAM	L	Inner_1RB_Right	24.37	22.96	26.73	20.63	PASS



Unless otherwise agreed in writing, this document is issued by the Company subject to its General Conditions of Service printed overleaf, available on request or accessible at <http://www.sgs.com/en/Terms-and-Conditions.aspx> and, for electronic format documents, subject to Terms and Conditions for Electronic Documents at <http://www.sgs.com/en/Terms-and-Conditions/Terms-e-Documents.aspx>. Attention is drawn to the limitation of liability, indemnification and jurisdiction issues defined therein. Any holder of this document is advised that information contained hereon reflects the Company's findings at the time of its intervention only and within the limits of Client's instructions, if any. The Company's sole responsibility is to its Client and this document does not exonerate parties to a transaction from exercising all their rights and obligations under the transaction documents. This document cannot be reproduced except in full, without prior written approval of the Company. Any unauthorized alteration, forgery or falsification of the content or appearance of this document is unlawful and offenders may be prosecuted to the fullest extent of the law. Unless otherwise stated the results shown in this test report refer only to the sample(s) tested and such sample(s) are retained for 30 days only.

Attention: To check the authenticity of testing/inspection report & certificate, please contact us at telephone: (86-755) 8307 1443, or email: CN.Doccheck@sgs.com

South of No. 6 Plant, No. 1, Pansheng Road, Suzhou Industrial Park, Suzhou Area, China (Jiangsu) Pilot Free Trade Zone 215000 t (86-512) 62992980 www.sgsgroup.com.cn
 中国·苏州·中国(江苏)自由贸易试验区苏州片区苏州工业园区海胜路1号的6号厂房南楼 邮编: 215000 t (86-512) 62992980 sgs.china@sgs.com



N77-3700-3980	30	100	CP-16QAM	L	Outer_Full	22.42	21.1	24.82	18.72	PASS
N77-3700-3980	30	100	CP-64QAM	L	Inner_1RB_Left	22.41	21.24	24.87	18.77	PASS
N77-3700-3980	30	100	CP-64QAM	L	Inner_1RB_Right	22.59	21.07	24.91	18.81	PASS
N77-3700-3980	30	100	CP-64QAM	L	Outer_Full	21.96	20.62	24.35	18.25	PASS
N77-3700-3980	30	100	CP-256QAM	L	Inner_1RB_Left	18.91	17.78	21.39	15.29	PASS
N77-3700-3980	30	100	CP-256QAM	L	Inner_1RB_Right	19.19	17.5	21.44	15.34	PASS
N77-3700-3980	30	100	CP-256QAM	L	Outer_Full	18.96	17.63	21.36	15.26	PASS
N77-3700-3980	30	100	DFT-PI2BPSK	M	Inner_1RB_Left	27	25.71	29.41	23.31	PASS
N77-3700-3980	30	100	DFT-PI2BPSK	M	Inner_1RB_Right	26.87	25.41	29.21	23.11	PASS
N77-3700-3980	30	100	DFT-PI2BPSK	M	Outer_Full	24.97	24.11	27.57	21.47	PASS
N77-3700-3980	30	100	DFT-QPSK	M	Inner_1RB_Left	26.99	25.71	29.41	23.31	PASS
N77-3700-3980	30	100	DFT-QPSK	M	Inner_1RB_Right	26.82	25.67	29.29	23.19	PASS
N77-3700-3980	30	100	DFT-QPSK	M	Outer_Full	24.85	23.63	27.29	21.19	PASS
N77-3700-3980	30	100	DFT-16QAM	M	Inner_1RB_Left	26.18	24.41	28.39	22.29	PASS
N77-3700-3980	30	100	DFT-16QAM	M	Inner_1RB_Right	26.05	24.98	28.56	22.46	PASS
N77-3700-3980	30	100	DFT-16QAM	M	Outer_Full	23.77	22.42	26.16	20.06	PASS
N77-3700-3980	30	100	DFT-64QAM	M	Inner_1RB_Left	25.64	24.53	28.13	22.03	PASS
N77-3700-3980	30	100	DFT-64QAM	M	Inner_1RB_Right	25.53	24.42	28.02	21.92	PASS
N77-3700-3980	30	100	DFT-64QAM	M	Outer_Full	23.79	22.54	26.22	20.12	PASS
N77-3700-3980	30	100	DFT-256QAM	M	Inner_1RB_Left	23.85	22.73	26.34	20.24	PASS
N77-3700-3980	30	100	DFT-256QAM	M	Inner_1RB_Right	23.89	22.61	26.31	20.21	PASS
N77-3700-3980	30	100	DFT-256QAM	M	Outer_Full	23.51	22.02	25.84	19.74	PASS
N77-3700-3980	30	100	CP-QPSK	M	Inner_1RB_Left	24.78	23.07	27.02	20.92	PASS
N77-3700-3980	30	100	CP-QPSK	M	Inner_1RB_Right	24.79	23.33	27.13	21.03	PASS
N77-3700-3980	30	100	CP-QPSK	M	Outer_Full	22.47	20.98	24.8	18.7	PASS
N77-3700-3980	30	100	CP-16QAM	M	Inner_1RB_Left	24.27	22.68	26.56	20.46	PASS
N77-3700-3980	30	100	CP-16QAM	M	Inner_1RB_Right	24.48	22.89	26.77	20.67	PASS
N77-3700-3980	30	100	CP-16QAM	M	Outer_Full	22.46	21.11	24.85	18.75	PASS
N77-3700-3980	30	100	CP-64QAM	M	Inner_1RB_Left	22.53	21.03	24.85	18.75	PASS
N77-3700-3980	30	100	CP-64QAM	M	Inner_1RB_Right	22.48	21.14	24.87	18.77	PASS
N77-3700-3980	30	100	CP-64QAM	M	Outer_Full	22.04	20.74	24.45	18.35	PASS
N77-3700-3980	30	100	CP-256QAM	M	Inner_1RB_Left	19.03	17.42	21.31	15.21	PASS
N77-3700-3980	30	100	CP-256QAM	M	Inner_1RB_Right	18.91	17.64	21.33	15.23	PASS
N77-3700-3980	30	100	CP-256QAM	M	Outer_Full	18.98	17.71	21.4	15.3	PASS
N77-3700-3980	30	100	DFT-PI2BPSK	H	Inner_1RB_Left	26.87	25.46	29.23	23.13	PASS
N77-3700-3980	30	100	DFT-PI2BPSK	H	Inner_1RB_Right	26.94	25.48	29.28	23.18	PASS
N77-3700-3980	30	100	DFT-PI2BPSK	H	Outer_Full	24.88	24.02	27.48	21.38	PASS
N77-3700-3980	30	100	DFT-QPSK	H	Inner_1RB_Left	26.79	25.44	29.18	23.08	PASS



Unless otherwise agreed in writing, this document is issued by the Company subject to its General Conditions of Service printed overleaf, available on request or accessible at <http://www.sgs.com/en/Terms-and-Conditions.aspx> and, for electronic format documents, subject to Terms and Conditions for Electronic Documents at <http://www.sgs.com/en/Terms-and-Conditions/Terms-e-Documents.aspx>. Attention is drawn to the limitation of liability, indemnification and jurisdiction issues defined therein. Any holder of this document is advised that information contained hereon reflects the Company's findings at the time of its intervention only and within the limits of Client's instructions, if any. The Company's sole responsibility is to its Client and this document does not exonerate parties to a transaction from exercising all their rights and obligations under the transaction documents. This document cannot be reproduced except in full, without prior written approval of the Company. Any unauthorized alteration, forgery or falsification of the content or appearance of this document is unlawful and offenders may be prosecuted to the fullest extent of the law. Unless otherwise stated the results shown in this test report refer only to the sample(s) tested and such sample(s) are retained for 30 days only.

Attention: To check the authenticity of testing/inspection report & certificate, please contact us at telephone: (86-755) 8307 1443, or email: CN.Doccheck@sgs.com

South of No. 6 Plant, No. 1, Pansheng Road, Suzhou Industrial Park, Suzhou Area, China (Jiangsu) Pilot Free Trade Zone 215000 t (86-512) 62992980 www.sgsgroup.com.cn
 中国·苏州·中国(江苏)自由贸易试验区苏州片区苏州工业园区海胜路1号的6号厂房南楼 邮编: 215000 t (86-512) 62992980 sgs.china@sgs.com



Report No.: SEWM2304000122RG02

Rev.: 01

Page: 39 of 307

N77-3700-3980	30	100	DFT-QPSK	H	Inner_1RB_Right	26.88	25.73	29.35	23.25	PASS
N77-3700-3980	30	100	DFT-QPSK	H	Outer_Full	24.79	23.57	27.23	21.13	PASS
N77-3700-3980	30	100	DFT-16QAM	H	Inner_1RB_Left	26.31	24.54	28.52	22.42	PASS
N77-3700-3980	30	100	DFT-16QAM	H	Inner_1RB_Right	26.09	25.02	28.6	22.5	PASS
N77-3700-3980	30	100	DFT-16QAM	H	Outer_Full	23.84	22.49	26.23	20.13	PASS
N77-3700-3980	30	100	DFT-64QAM	H	Inner_1RB_Left	25.63	24.52	28.12	22.02	PASS
N77-3700-3980	30	100	DFT-64QAM	H	Inner_1RB_Right	25.5	24.39	27.99	21.89	PASS
N77-3700-3980	30	100	DFT-64QAM	H	Outer_Full	23.69	22.44	26.12	20.02	PASS
N77-3700-3980	30	100	DFT-256QAM	H	Inner_1RB_Left	23.69	22.57	26.18	20.08	PASS
N77-3700-3980	30	100	DFT-256QAM	H	Inner_1RB_Right	23.82	22.54	26.24	20.14	PASS
N77-3700-3980	30	100	DFT-256QAM	H	Outer_Full	23.55	22.06	25.88	19.78	PASS
N77-3700-3980	30	100	CP-QPSK	H	Inner_1RB_Left	24.5	22.37	26.57	20.47	PASS
N77-3700-3980	30	100	CP-QPSK	H	Inner_1RB_Right	25.16	23.47	27.41	21.31	PASS
N77-3700-3980	30	100	CP-QPSK	H	Outer_Full	22.58	20.78	24.78	18.68	PASS
N77-3700-3980	30	100	CP-16QAM	H	Inner_1RB_Left	24.06	22.07	26.19	20.09	PASS
N77-3700-3980	30	100	CP-16QAM	H	Inner_1RB_Right	24.78	23.05	27.01	20.91	PASS
N77-3700-3980	30	100	CP-16QAM	H	Outer_Full	22.47	20.91	24.77	18.67	PASS
N77-3700-3980	30	100	CP-64QAM	H	Inner_1RB_Left	21.98	20.09	24.15	18.05	PASS
N77-3700-3980	30	100	CP-64QAM	H	Inner_1RB_Right	22.92	21.25	25.18	19.08	PASS
N77-3700-3980	30	100	CP-64QAM	H	Outer_Full	21.99	20.49	24.31	18.21	PASS
N77-3700-3980	30	100	CP-256QAM	H	Inner_1RB_Left	18.54	16.57	20.68	14.58	PASS
N77-3700-3980	30	100	CP-256QAM	H	Inner_1RB_Right	19.26	17.69	21.56	15.46	PASS
N77-3700-3980	30	100	CP-256QAM	H	Outer_Full	19	17.36	21.27	15.17	PASS



Unless otherwise agreed in writing, this document is issued by the Company subject to its General Conditions of Service printed overleaf, available on request or accessible at <http://www.sgs.com/en/Terms-and-Conditions.aspx> and, for electronic format documents, subject to Terms and Conditions for Electronic Documents at <http://www.sgs.com/en/Terms-and-Conditions/Terms-e-Documents.aspx>. Attention is drawn to the limitation of liability, indemnification and jurisdiction issues defined therein. Any holder of this document is advised that information contained hereon reflects the Company's findings at the time of its intervention only and within the limits of Client's instructions, if any. The Company's sole responsibility is to its Client and this document does not exonerate parties to a transaction from exercising all their rights and obligations under the transaction documents. This document cannot be reproduced except in full, without prior written approval of the Company. Any unauthorized alteration, forgery or falsification of the content or appearance of this document is unlawful and offenders may be prosecuted to the fullest extent of the law. Unless otherwise stated the results shown in this test report refer only to the sample(s) tested and such sample(s) are retained for 30 days only.

Attention: To check the authenticity of testing/inspection report & certificate, please contact us at telephone: (86-755) 8307 1443, or email: CN.Doccheck@sgs.com

South of No. 6 Plant, No. 1, Runsheng Road, Suzhou Industrial Park, Suzhou Area, China (Jiangsu) Pilot Free Trade Zone 215000
 中国·苏州·中国(江苏)自由贸易试验区苏州片区苏州工业园区润胜路1号的6号厂房南楼 邮编: 215000

t (86-512) 62992980 www.sgs.com.cn
 t (86-512) 62992980 sgs.china@sgs.com

Peak-to-Average Ratio for SA

Test Result

Band	SCS	Bandwidth	Modulation	Channel	RB Config	Result	Limit	Verdict
N77-3700-3980	30	100	DFT-256QAM	L	Outer_Full	9.83	≤13	PASS
N77-3700-3980	30	100	CP-256QAM	L	Outer_Full	10.38	≤13	PASS
N77-3700-3980	30	100	DFT-256QAM	M	Outer_Full	9.89	≤13	PASS
N77-3700-3980	30	100	CP-256QAM	M	Outer_Full	10.30	≤13	PASS
N77-3700-3980	30	100	DFT-256QAM	H	Outer_Full	9.38	≤13	PASS
N77-3700-3980	30	100	CP-256QAM	H	Outer_Full	10.19	≤13	PASS

Test Result for MIMO

Band	SCS	Bandwidth	Modulation	Channel	RB Config	DutyCycle	Factor	Result	Limit	Verdict
N77-3700-3980	30	100	DFT-256QAM	L	Outer_Full	19.6%	7.08	2.60	≤13	PASS
N77-3700-3980	30	100	CP-256QAM	L	Outer_Full	19.6%	7.08	2.93	≤13	PASS
N77-3700-3980	30	100	DFT-256QAM	M	Outer_Full	19.6%	7.08	2.55	≤13	PASS
N77-3700-3980	30	100	CP-256QAM	M	Outer_Full	19.6%	7.08	2.14	≤13	PASS
N77-3700-3980	30	100	DFT-256QAM	H	Outer_Full	19.6%	7.08	2.48	≤13	PASS
N77-3700-3980	30	100	CP-256QAM	H	Outer_Full	19.6%	7.08	2.83	≤13	PASS



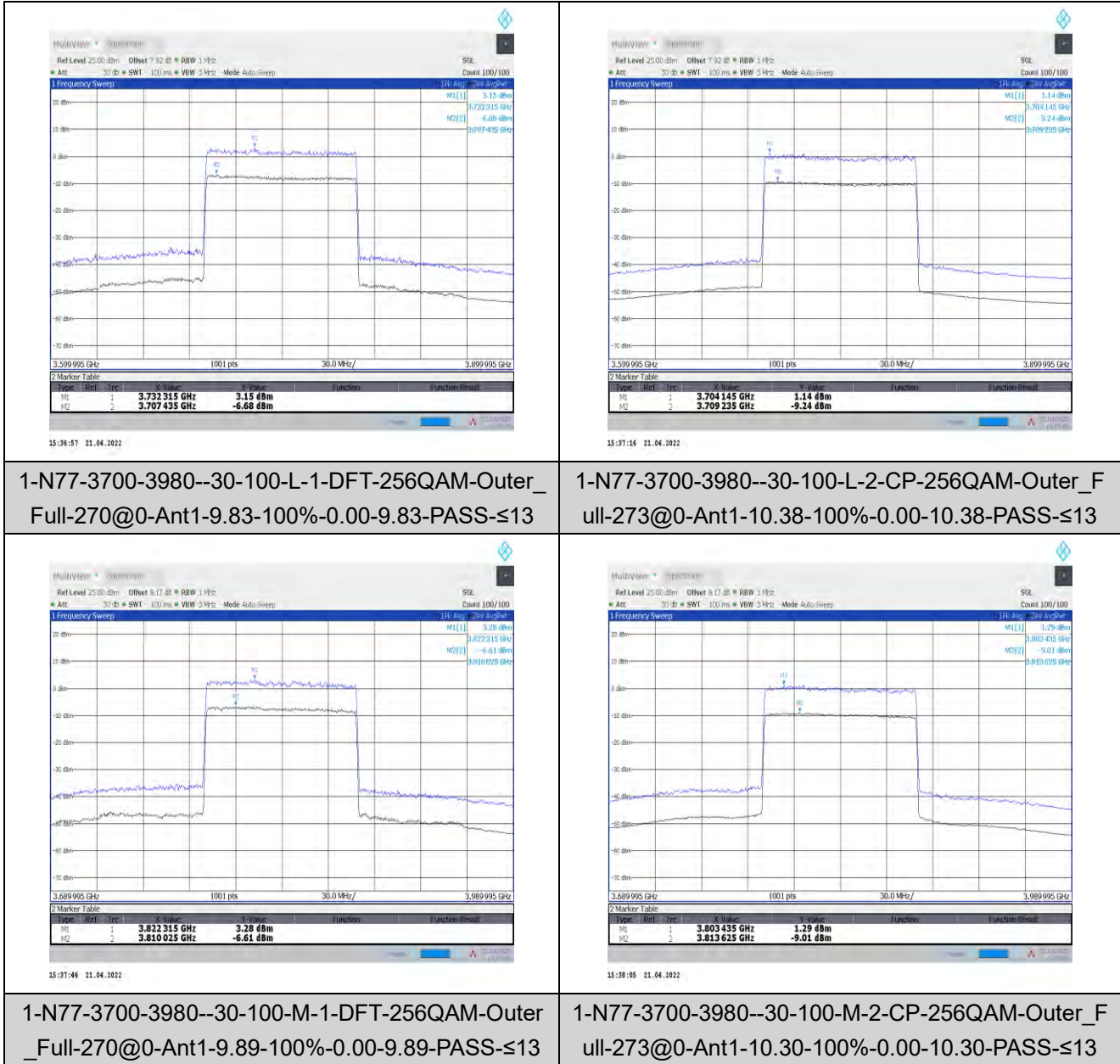
Unless otherwise agreed in writing, this document is issued by the Company subject to its General Conditions of Service printed overleaf, available on request or accessible at <http://www.sgs.com/en/Terms-and-Conditions.aspx> and, for electronic format documents, subject to Terms and Conditions for Electronic Documents at <http://www.sgs.com/en/Terms-and-Conditions/Terms-e-Documents.aspx>. Attention is drawn to the limitation of liability, indemnification and jurisdiction issues defined therein. Any holder of this document is advised that information contained hereon reflects the Company's findings at the time of its intervention only and within the limits of Client's instructions, if any. The Company's sole responsibility is to its Client and this document does not exonerate parties to a transaction from exercising all their rights and obligations under the transaction documents. This document cannot be reproduced except in full, without prior written approval of the Company. Any unauthorized alteration, forgery or falsification of the content or appearance of this document is unlawful and offenders may be prosecuted to the fullest extent of the law. Unless otherwise stated the results shown in this test report refer only to the sample(s) tested and such sample(s) are retained for 30 days only.

Attention: To check the authenticity of testing/inspection report & certificate, please contact us at telephone: (86-755) 8307 1443, or email: CN.Doccheck@sgs.com

South of No. 6 Plant, No. 1, Pansheng Road, Suzhou Industrial Park, Suzhou Area, China (Jiangsu) Pilot Free Trade Zone 215000
 中国·苏州·中国(江苏)自由贸易试验区苏州片区苏州工业园区海胜路1号的6号厂房南楼 邮编: 215000

t (86-512) 62992980 www.sgs.com.cn
 t (86-512) 62992980 sgs.china@sgs.com

Test Graphs



Unless otherwise agreed in writing, this document is issued by the Company subject to its General Conditions of Service printed overleaf, available on request or accessible at <http://www.sgs.com/en/Terms-and-Conditions.aspx> and, for electronic format documents, subject to Terms and Conditions for Electronic Documents at <http://www.sgs.com/en/Terms-and-Conditions/Terms-e-Documents.aspx>. Attention is drawn to the limitation of liability, indemnification and jurisdiction issues defined therein. Any holder of this document is advised that information contained hereon reflects the Company's findings at the time of its intervention only and within the limits of Client's instructions, if any. The Company's sole responsibility is to its Client and this document does not exonerate parties to a transaction from exercising all their rights and obligations under the transaction documents. This document cannot be reproduced except in full, without prior written approval of the Company. Any unauthorized alteration, forgery or falsification of the content or appearance of this document is unlawful and offenders may be prosecuted to the fullest extent of the law. Unless otherwise stated the results shown in this test report refer only to the sample(s) tested and such sample(s) are retained for 30 days only.
Attention: To check the authenticity of testing/inspection report & certificate, please contact us at telephone: (86-755) 8307 1443, or email: CN.Doccheck@sgs.com
 South of No. 6 Plant, No. 1, Pansheng Road, Suzhou Industrial Park, Suzhou Area, China (Jiangsu) Pilot Free Trade Zone 215000 t (86-512) 62992980 www.sgs.com.cn
 中国·苏州·中国(江苏)自由贸易试验区苏州片区苏州工业园区海胜路1号的6号厂房南楼 邮编: 215000 t (86-512) 62992980 sgs.china@sgs.com



1-N77-3700-3980--30-100-H-1-DFT-256QAM-Outer_Full-270@0-Ant1-9.38-100%-0.00-9.38-PASS-≤13



1-N77-3700-3980--30-100-H-2-CP-256QAM-Outer_Full-273@0-Ant1-10.19-100%-0.00-10.19-PASS-≤13



Unless otherwise agreed in writing, this document is issued by the Company subject to its General Conditions of Service printed overleaf, available on request or accessible at <http://www.sgs.com/en/Terms-and-Conditions.aspx> and, for electronic format documents, subject to Terms and Conditions for Electronic Documents at <http://www.sgs.com/en/Terms-and-Conditions/Terms-e-Documents.aspx>. Attention is drawn to the limitation of liability, indemnification and jurisdiction issues defined therein. Any holder of this document is advised that information contained hereon reflects the Company's findings at the time of its intervention only and within the limits of Client's instructions, if any. The Company's sole responsibility is to its Client and this document does not exonerate parties to a transaction from exercising all their rights and obligations under the transaction documents. This document cannot be reproduced except in full, without prior written approval of the Company. Any unauthorized alteration, forgery or falsification of the content or appearance of this document is unlawful and offenders may be prosecuted to the fullest extent of the law. Unless otherwise stated the results shown in this test report refer only to the sample(s) tested and such sample(s) are retained for 30 days only.
Attention: To check the authenticity of testing/inspection report & certificate, please contact us at telephone: (86-755) 8307 1443, or email: CN.Doccheck@sgs.com
 South of No. 6 Plant, No. 1, Runsheng Road, Suzhou Industrial Park, Suzhou Area, China (Jiangsu) Pilot Free Trade Zone 215000 t (86-512) 62992980 www.sgs.com.cn
 中国·苏州·中国(江苏)自由贸易试验区苏州片区苏州工业园区润胜路1号的6号厂房南楼 邮编: 215000 t (86-512) 62992980 sgs.china@sgs.com

Test Graphs for MIMO

<p>1-N77-3700-3980-PC1-30-100-L-1-DFT-256QAM-Outer_Full-270@0-Ant1-9.68-19.6%-7.08-2.60-PASS-≤13</p>	<p>1-N77-3700-3980-PC1-30-100-L-2-CP-256QAM-Outer_Full-273@0-Ant1-10.01-19.6%-7.08-2.93-PASS-≤13</p>
<p>1-N77-3700-3980-PC1-30-100-M-1-DFT-256QAM-Outer_Full-270@0-Ant1-9.63-19.6%-7.08-2.55-PASS-≤13</p>	<p>1-N77-3700-3980-PC1-30-100-M-2-CP-256QAM-Outer_Full-273@0-Ant1-9.22-19.6%-7.08-2.14-PASS-≤13</p>

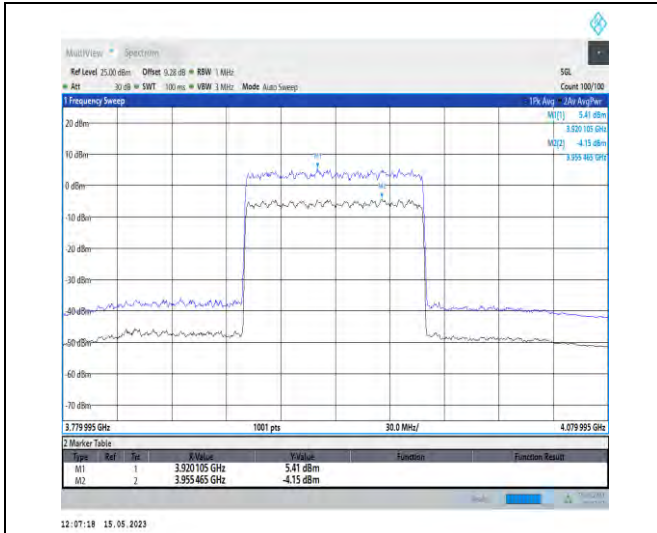


Unless otherwise agreed in writing, this document is issued by the Company subject to its General Conditions of Service printed overleaf, available on request or accessible at <http://www.sgs.com/en/Terms-and-Conditions.aspx> and, for electronic format documents, subject to Terms and Conditions for Electronic Documents at <http://www.sgs.com/en/Terms-and-Conditions/Terms-e-Documents.aspx>. Attention is drawn to the limitation of liability, indemnification and jurisdiction issues defined therein. Any holder of this document is advised that information contained hereon reflects the Company's findings at the time of its intervention only and within the limits of Client's instructions, if any. The Company's sole responsibility is to its Client and this document does not exonerate parties to a transaction from exercising all their rights and obligations under the transaction documents. This document cannot be reproduced except in full, without prior written approval of the Company. Any unauthorized alteration, forgery or falsification of the content or appearance of this document is unlawful and offenders may be prosecuted to the fullest extent of the law. Unless otherwise stated the results shown in this test report refer only to the sample(s) tested and such sample(s) are retained for 30 days only.

Attention: To check the authenticity of testing/inspection report & certificate, please contact us at telephone: (86-755) 8307 1443, or email: CN.Doccheck@sgs.com

South of No. 6 Plant, No. 1, Pansheng Road, Suzhou Industrial Park, Suzhou Area, China (Jiangsu) Pilot Free Trade Zone 215000
 中国·苏州·中国(江苏)自由贸易试验区苏州片区苏州工业园区海陆路1号的6号厂房南面 邮编: 215000

t (86-512) 62992980 www.sgs.com.cn
 t (86-512) 62992980 sgs.china@sgs.com



1-N77-3700-3980-PC1-30-100-H-1-DFT-256QAM-Outer_Full-270@0-Ant1-9.56-19.6%-7.08-2.48-PASS-≤13



1-N77-3700-3980-PC1-30-100-H-2-CP-256QAM-Outer_Full-273@0-Ant1-9.91-19.6%-7.08-2.83-PASS-≤13



Modulation characteristics for SA

Test Result

Band	SCS	Bandwidth	Modulation	Channel	RB Config	Result	Verdict
N77-3700-3980	30	100	DFT-PI2BPSK	M	Outer_Full	see graph	PASS
N77-3700-3980	30	100	DFT-QPSK	M	Outer_Full	see graph	PASS
N77-3700-3980	30	100	DFT-16QAM	M	Outer_Full	see graph	PASS
N77-3700-3980	30	100	DFT-64QAM	M	Outer_Full	see graph	PASS
N77-3700-3980	30	100	DFT-256QAM	M	Outer_Full	see graph	PASS
N77-3700-3980	30	100	CP-QPSK	M	Outer_Full	see graph	PASS
N77-3700-3980	30	100	CP-16QAM	M	Outer_Full	see graph	PASS
N77-3700-3980	30	100	CP-64QAM	M	Outer_Full	see graph	PASS
N77-3700-3980	30	100	CP-256QAM	M	Outer_Full	see graph	PASS



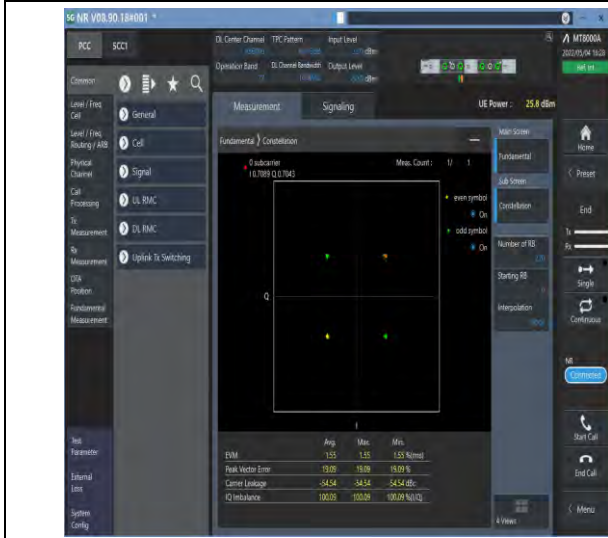
Unless otherwise agreed in writing, this document is issued by the Company subject to its General Conditions of Service printed overleaf, available on request or accessible at <http://www.sgs.com/en/Terms-and-Conditions.aspx> and, for electronic format documents, subject to Terms and Conditions for Electronic Documents at <http://www.sgs.com/en/Terms-and-Conditions/Terms-e-Documents.aspx>. Attention is drawn to the limitation of liability, indemnification and jurisdiction issues defined therein. Any holder of this document is advised that information contained hereon reflects the Company's findings at the time of its intervention only and within the limits of Client's instructions, if any. The Company's sole responsibility is to its Client and this document does not exonerate parties to a transaction from exercising all their rights and obligations under the transaction documents. This document cannot be reproduced except in full, without prior written approval of the Company. Any unauthorized alteration, forgery or falsification of the content or appearance of this document is unlawful and offenders may be prosecuted to the fullest extent of the law. Unless otherwise stated the results shown in this test report refer only to the sample(s) tested and such sample(s) are retained for 30 days only.

Attention: To check the authenticity of testing/inspection report & certificate, please contact us at telephone: (86-755) 8307 1443, or email: CN.Doccheck@sgs.com

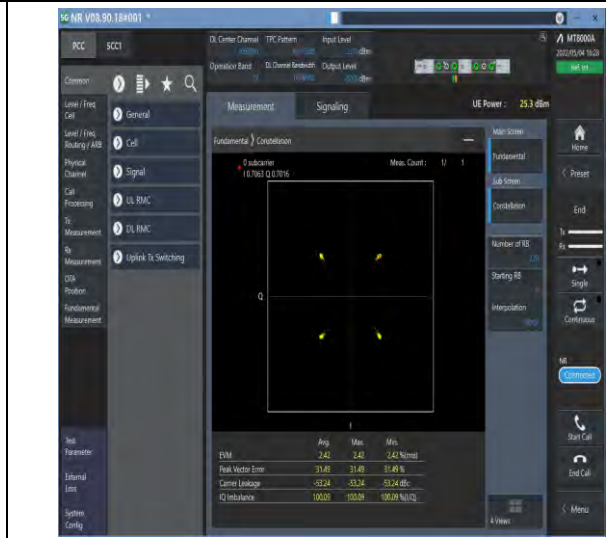
South of No. 6 Plant, No. 1, Runsheng Road, Suzhou Industrial Park, Suzhou Area, China (Jiangsu) Pilot Free Trade Zone 215000
 中国·苏州·中国(江苏)自由贸易试验区苏州片区苏州工业园区海胜路1号的6号厂房南楼 邮编: 215000

t (86-512) 62992980 www.sgs.com.cn
 t (86-512) 62992980 sgs.china@sgs.com

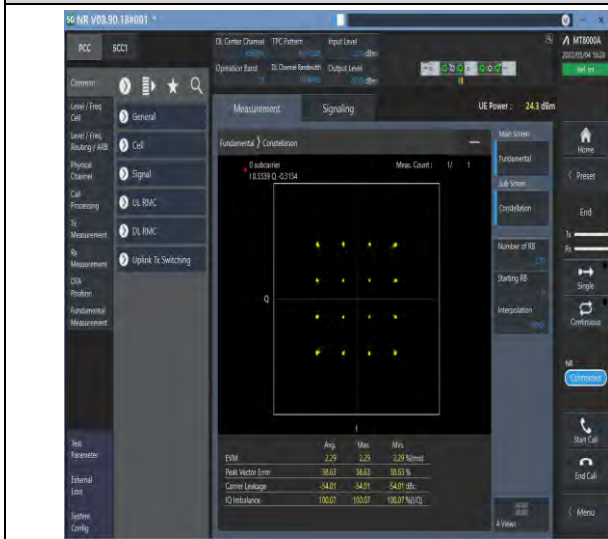
Test Graphs



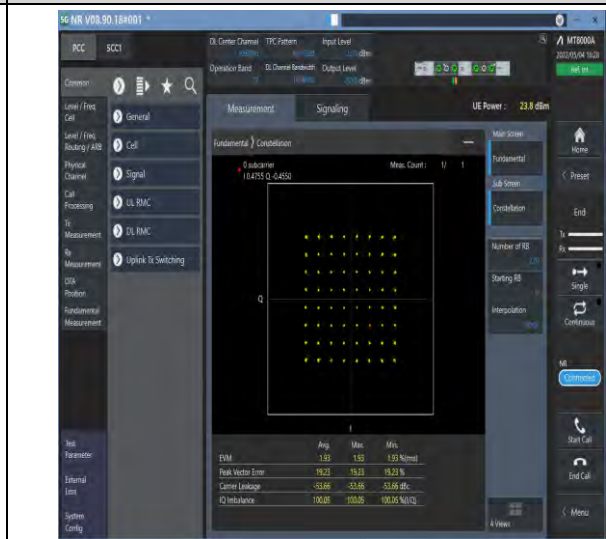
1-N77-3700-3980-PC2-30-100-M-1-DFT-PI2BPSK-Outer_Full-270@0-Ant1-see graph-PASS



1-N77-3700-3980-PC2-30-100-M-2-DFT-QPSK-Out er_Full-270@0-Ant1-see graph-PASS



1-N77-3700-3980-PC2-30-100-M-3-DFT-16QAM-Out er_Full-270@0-Ant1-see graph-PASS



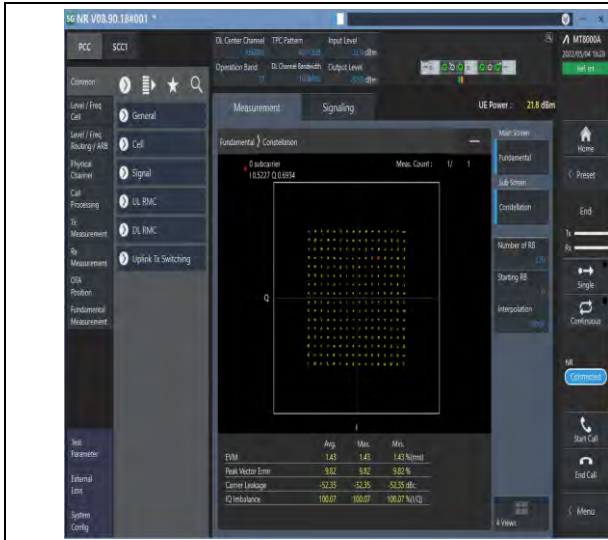
1-N77-3700-3980-PC2-30-100-M-4-DFT-64QAM-Out er_Full-270@0-Ant1-see graph-PASS



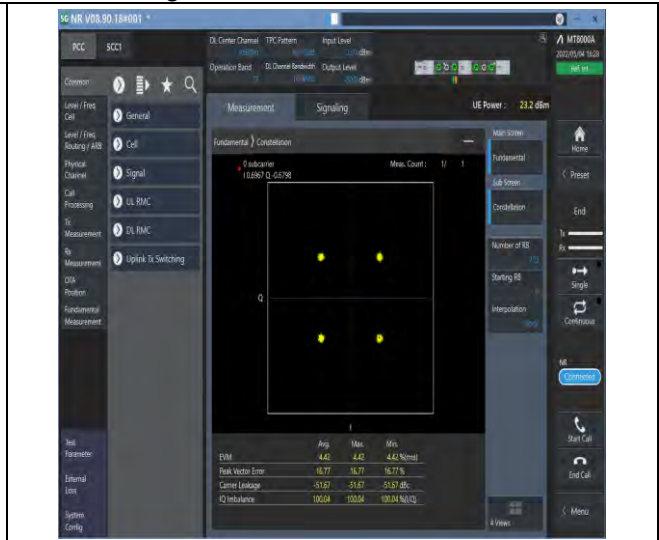
Unless otherwise agreed in writing, this document is issued by the Company subject to its General Conditions of Service printed overleaf, available on request or accessible at <http://www.sgs.com/en/Terms-and-Conditions.aspx> and, for electronic format documents, subject to Terms and Conditions for Electronic Documents at <http://www.sgs.com/en/Terms-and-Conditions/Terms-e-Documents.aspx>. Attention is drawn to the limitation of liability, indemnification and jurisdiction issues defined therein. Any holder of this document is advised that information contained hereon reflects the Company's findings at the time of its intervention only and within the limits of Client's instructions, if any. The Company's sole responsibility is to its Client and this document does not exonerate parties to a transaction from exercising all their rights and obligations under the transaction documents. This document cannot be reproduced except in full, without prior written approval of the Company. Any unauthorized alteration, forgery or falsification of the content or appearance of this document is unlawful and offenders may be prosecuted to the fullest extent of the law. Unless otherwise stated the results shown in this test report refer only to the sample(s) tested and such sample(s) are retained for 30 days only.

Attention: To check the authenticity of testing/inspection report & certificate, please contact us at telephone: (86-755) 8307 1443, or email: CN.Doccheck@sgs.com

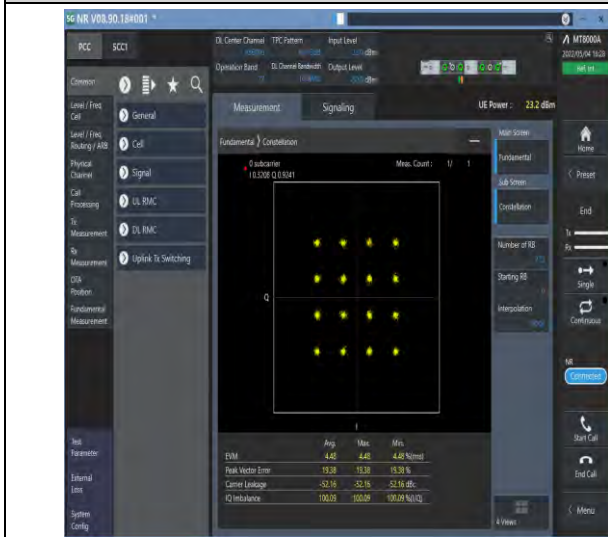
South of No. 6 Plant, No. 1, Runsheng Road, Suzhou Industrial Park, Suzhou Area, China (Jiangsu) Pilot Free Trade Zone 215000 t (86-512) 62992980 www.sgs.com.cn
 中国·苏州·中国(江苏)自由贸易试验区苏州片区苏州工业园区海胜路1号的6号厂房南楼 邮编: 215000 t (86-512) 62992980 sgs.china@sgs.com



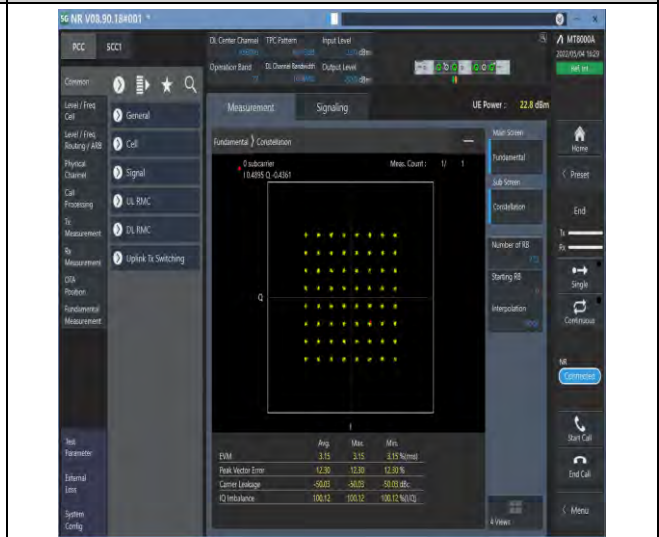
1-N77-3700-3980-PC2-30-100-M-5-DFT-256QAM-Outer_Full-270@0-Ant1-see graph-PASS



1-N77-3700-3980-PC2-30-100-M-6-CP-QPSK-Outer_Full-273@0-Ant1-see graph-PASS



1-N77-3700-3980-PC2-30-100-M-7-CP-16QAM-Outer_Full-273@0-Ant1-see graph-PASS



1-N77-3700-3980-PC2-30-100-M-8-CP-64QAM-Outer_Full-273@0-Ant1-see graph-PASS

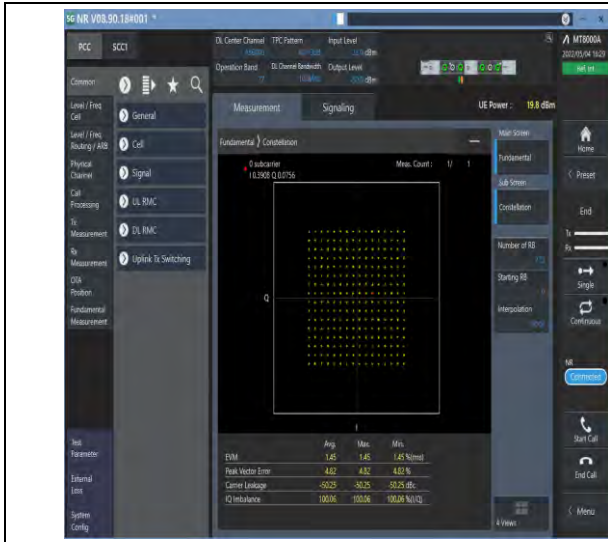


Unless otherwise agreed in writing, this document is issued by the Company subject to its General Conditions of Service printed overleaf, available on request or accessible at <http://www.sgs.com/en/Terms-and-Conditions.aspx> and, for electronic format documents, subject to Terms and Conditions for Electronic Documents at <http://www.sgs.com/en/Terms-and-Conditions/Terms-e-Documents.aspx>. Attention is drawn to the limitation of liability, indemnification and jurisdiction issues defined therein. Any holder of this document is advised that information contained hereon reflects the Company's findings at the time of its intervention only and within the limits of Client's instructions, if any. The Company's sole responsibility is to its Client and this document does not exonerate parties to a transaction from exercising all their rights and obligations under the transaction documents. This document cannot be reproduced except in full, without prior written approval of the Company. Any unauthorized alteration, forgery or falsification of the content or appearance of this document is unlawful and offenders may be prosecuted to the fullest extent of the law. Unless otherwise stated the results shown in this test report refer only to the sample(s) tested and such sample(s) are retained for 30 days only.

Attention: To check the authenticity of testing/inspection report & certificate, please contact us at telephone: (86-755) 8307 1443, or email: CN.Doccheck@sgs.com

South of No. 6 Plant, No. 1, Pansheng Road, Suzhou Industrial Park, Suzhou Area, China (Jiangsu) Pilot Free Trade Zone 215000
 中国·苏州·中国(江苏)自由贸易试验区苏州片区苏州工业园区海胜路1号的6号厂房南座 邮编: 215000

t (86-512) 62992980 www.sgs.com.cn
 t (86-512) 62992980 sgs.china@sgs.com



1-N77-3700-3980-PC2-30-100-M-9-CP-256QAM-Out
er_Full-273@0-Ant1-see graph-PASS



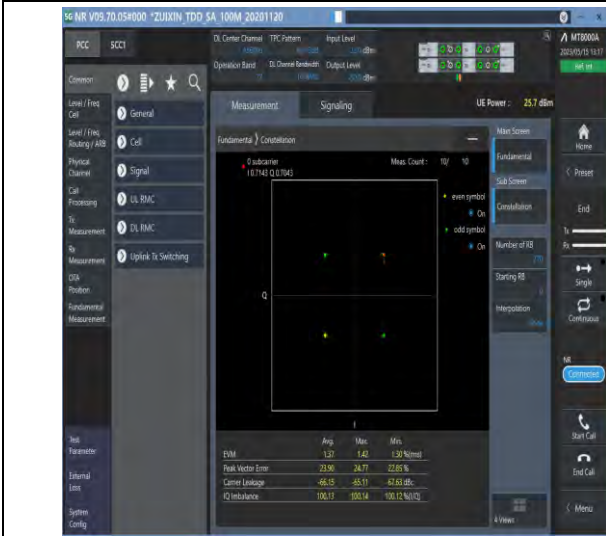
Unless otherwise agreed in writing, this document is issued by the Company subject to its General Conditions of Service printed overleaf, available on request or accessible at <http://www.sgs.com/en/Terms-and-Conditions.aspx> and, for electronic format documents, subject to Terms and Conditions for Electronic Documents at <http://www.sgs.com/en/Terms-and-Conditions/Terms-e-Documents.aspx>. Attention is drawn to the limitation of liability, indemnification and jurisdiction issues defined therein. Any holder of this document is advised that information contained hereon reflects the Company's findings at the time of its intervention only and within the limits of Client's instructions, if any. The Company's sole responsibility is to its Client and this document does not exonerate parties to a transaction from exercising all their rights and obligations under the transaction documents. This document cannot be reproduced except in full, without prior written approval of the Company. Any unauthorized alteration, forgery or falsification of the content or appearance of this document is unlawful and offenders may be prosecuted to the fullest extent of the law. Unless otherwise stated the results shown in this test report refer only to the sample(s) tested and such sample(s) are retained for 30 days only.

Attention: To check the authenticity of testing/inspection report & certificate, please contact us at telephone: (86-755) 8307 1443, or email: CN.Doccheck@sgs.com

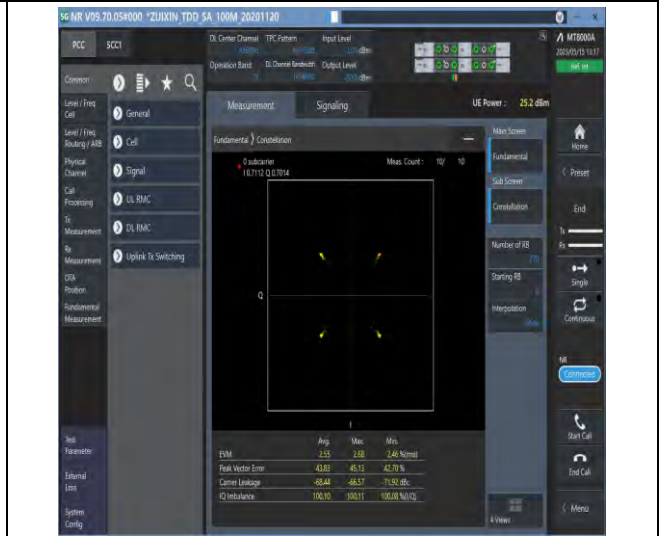
South of No. 6 Plant, No. 1, Runsheng Road, Suzhou Industrial Park, Suzhou Area, China (Jiangsu) Pilot Free Trade Zone 215000
中国·苏州·中国(江苏)自由贸易试验区苏州片区苏州工业园区润胜路1号的6号厂房南楼 邮编: 215000

t (86-512) 62992980 www.sgs.com.cn
t (86-512) 62992980 sgs.china@sgs.com

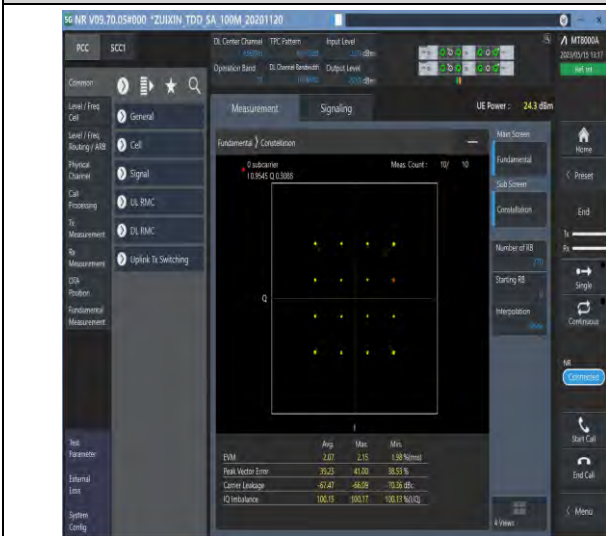
Test Graphs for MIMO



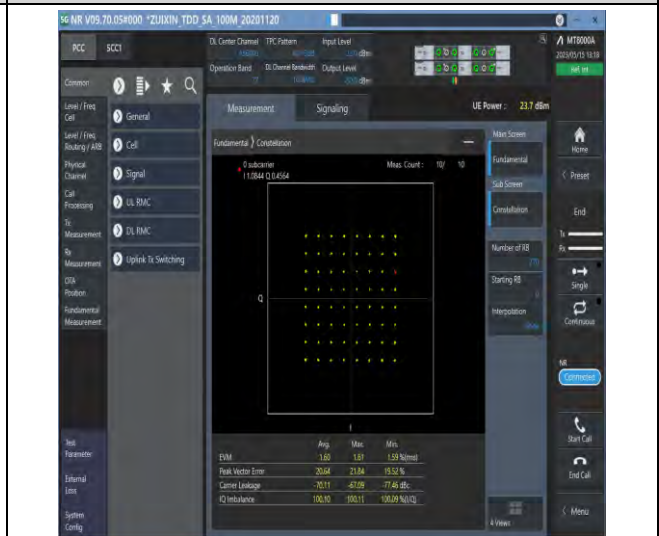
1-N77-3700-3980-PC1-30-100-M-1-DFT-PI2BPSK-Outer_Full-270@0-Ant1-see graph-PASS



1-N77-3700-3980-PC1-30-100-M-2-DFT-QPSK-Out er_Full-270@0-Ant1-see graph-PASS

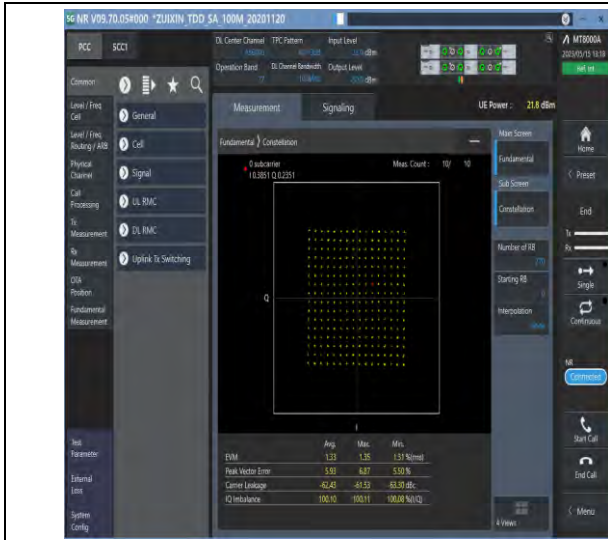


1-N77-3700-3980-PC1-30-100-M-3-DFT-16QAM-Out er_Full-270@0-Ant1-see graph-PASS

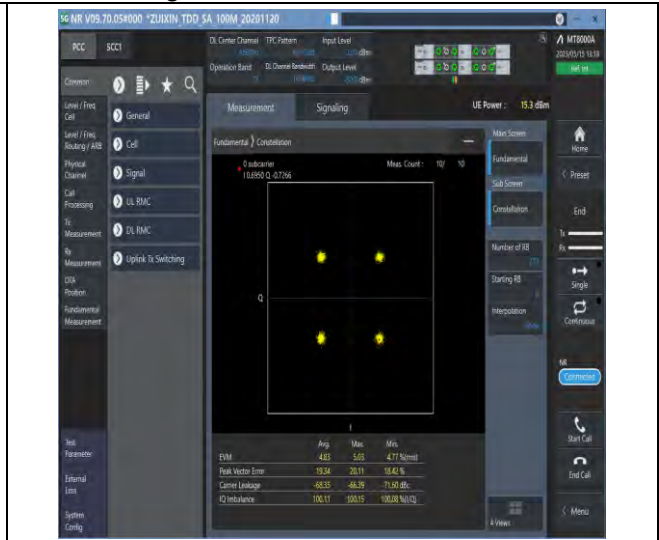


1-N77-3700-3980-PC1-30-100-M-4-DFT-64QAM-Out er_Full-270@0-Ant1-see graph-PASS

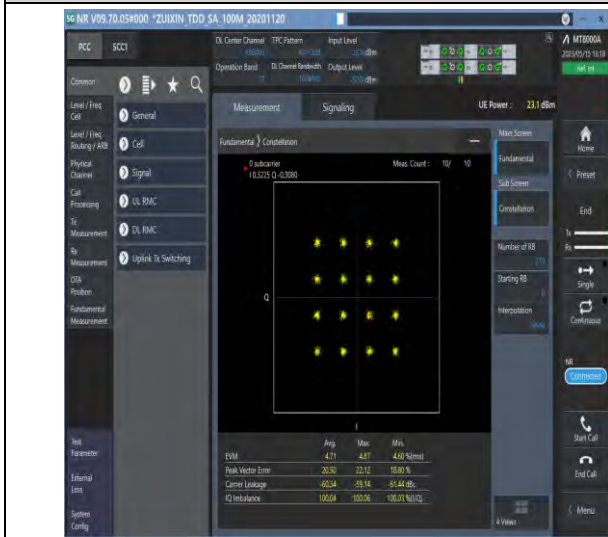




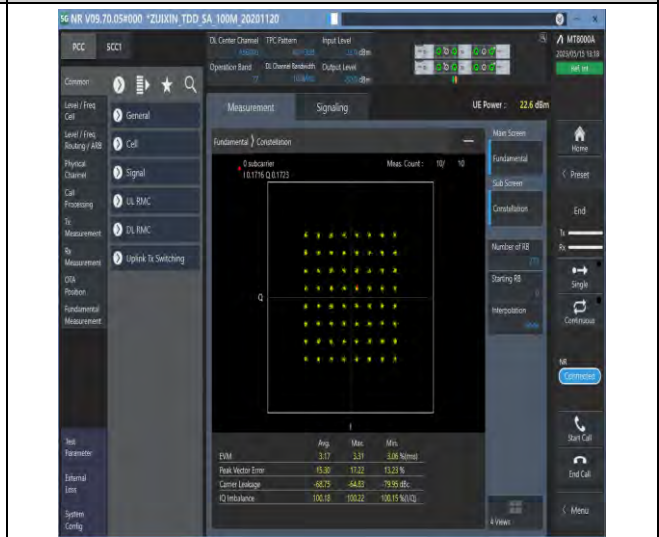
1-N77-3700-3980-PC1-30-100-M-5-DFT-256QAM-Outer_Full-270@0-Ant1-see graph-PASS



1-N77-3700-3980-PC1-30-100-M-6-CP-QPSK-Outer_Full-273@0-Ant1-see graph-PASS



1-N77-3700-3980-PC1-30-100-M-7-CP-16QAM-Outer_Full-273@0-Ant1-see graph-PASS



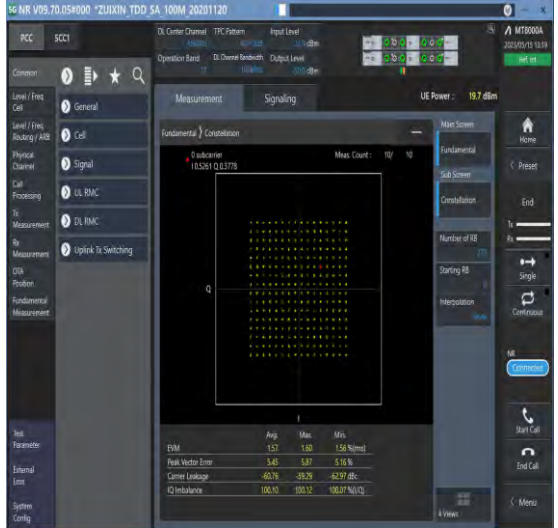
1-N77-3700-3980-PC1-30-100-M-8-CP-64QAM-Outer_Full-273@0-Ant1-see graph-PASS



Unless otherwise agreed in writing, this document is issued by the Company subject to its General Conditions of Service printed overleaf, available on request or accessible at <http://www.sgs.com/en/Terms-and-Conditions.aspx> and, for electronic format documents, subject to Terms and Conditions for Electronic Documents at <http://www.sgs.com/en/Terms-and-Conditions/Terms-e-Documents.aspx>. Attention is drawn to the limitation of liability, indemnification and jurisdiction issues defined therein. Any holder of this document is advised that information contained hereon reflects the Company's findings at the time of its intervention only and within the limits of Client's instructions, if any. The Company's sole responsibility is to its Client and this document does not exonerate parties to a transaction from exercising all their rights and obligations under the transaction documents. This document cannot be reproduced except in full, without prior written approval of the Company. Any unauthorized alteration, forgery or falsification of the content or appearance of this document is unlawful and offenders may be prosecuted to the fullest extent of the law. Unless otherwise stated the results shown in this test report refer only to the sample(s) tested and such sample(s) are retained for 30 days only.
Attention: To check the authenticity of testing/inspection report & certificate, please contact us at telephone: (86-755) 8307 1443, or email: CN.Doccheck@sgs.com

South of No. 6 Plant, No. 1, Pansheng Road, Suzhou Industrial Park, Suzhou Area, China (Jiangsu) Pilot Free Trade Zone 215000
 中国·苏州·中国(江苏)自由贸易试验区苏州片区苏州工业园区海胜路1号的6号厂房南部 邮编: 215000

t (86-512) 62992980 www.sgs.com.cn
 t (86-512) 62992980 sgs.china@sgs.com



	Avg	Max	Min
EVM	1.57	1.60	1.56 Normed
Peak Vector Error	5.45	5.87	5.16 %
Carrier Leakage	-60.76	-59.29	-62.97 dBc
IQ Imbalance	100.40	100.32	100.37 %/IQ

1-N77-3700-3980-PC1-30-100-M-9-CP-256QAM-Out
er_Full-273@0-Ant1-see graph-PASS



Unless otherwise agreed in writing, this document is issued by the Company subject to its General Conditions of Service printed overleaf, available on request or accessible at <http://www.sgs.com/en/Terms-and-Conditions.aspx> and, for electronic format documents, subject to Terms and Conditions for Electronic Documents at <http://www.sgs.com/en/Terms-and-Conditions/Terms-e-Documents.aspx>. Attention is drawn to the limitation of liability, indemnification and jurisdiction issues defined therein. Any holder of this document is advised that information contained hereon reflects the Company's findings at the time of its intervention only and within the limits of Client's instructions, if any. The Company's sole responsibility is to its Client and this document does not exonerate parties to a transaction from exercising all their rights and obligations under the transaction documents. This document cannot be reproduced except in full, without prior written approval of the Company. Any unauthorized alteration, forgery or falsification of the content or appearance of this document is unlawful and offenders may be prosecuted to the fullest extent of the law. Unless otherwise stated the results shown in this test report refer only to the sample(s) tested and such sample(s) are retained for 30 days only.

Attention: To check the authenticity of testing/inspection report & certificate, please contact us at telephone: (86-755) 8307 1443, or email: CN.Doccheck@sgs.com

South of No. 6 Plant, No. 1, Runsheng Road, Suzhou Industrial Park, Suzhou Area, China (Jiangsu) Pilot Free Trade Zone 215000 t (86-512) 62992980 www.sgsgroup.com.cn
 中国·苏州·中国(江苏)自由贸易试验区苏州片区苏州工业园区润胜路1号的6号厂房南楼 邮编: 215000 t (86-512) 62992980 sgs.china@sgs.com

26dB Bandwidth and Occupied Bandwidth for SA

Test Result

Band	SCS	Bandwidth	Modulation	Channel	RB Config	Result (99%)	Result (26dB)	Verdict
N77-3700-3980	30	10	DFT-QPSK	L	Outer_Full	8.628	9.580	PASS
N77-3700-3980	30	10	DFT-PI2BPSK	L	Outer_Full	8.569	9.220	PASS
N77-3700-3980	30	10	DFT-16QAM	L	Outer_Full	8.620	9.640	PASS
N77-3700-3980	30	10	DFT-64QAM	L	Outer_Full	8.567	9.580	PASS
N77-3700-3980	30	10	DFT-256QAM	L	Outer_Full	8.548	9.640	PASS
N77-3700-3980	30	10	CP-QPSK	L	Outer_Full	8.624	9.620	PASS
N77-3700-3980	30	10	CP-16QAM	L	Outer_Full	8.597	9.180	PASS
N77-3700-3980	30	10	CP-64QAM	L	Outer_Full	8.611	9.740	PASS
N77-3700-3980	30	10	CP-256QAM	L	Outer_Full	8.591	9.780	PASS
N77-3700-3980	30	10	DFT-QPSK	M	Outer_Full	8.598	9.840	PASS
N77-3700-3980	30	10	DFT-PI2BPSK	M	Outer_Full	8.581	9.420	PASS
N77-3700-3980	30	10	DFT-16QAM	M	Outer_Full	8.630	9.380	PASS
N77-3700-3980	30	10	DFT-64QAM	M	Outer_Full	8.592	9.440	PASS
N77-3700-3980	30	10	DFT-256QAM	M	Outer_Full	8.545	9.540	PASS
N77-3700-3980	30	10	CP-QPSK	M	Outer_Full	8.598	9.820	PASS
N77-3700-3980	30	10	CP-16QAM	M	Outer_Full	8.608	9.820	PASS
N77-3700-3980	30	10	CP-64QAM	M	Outer_Full	8.591	9.780	PASS
N77-3700-3980	30	10	CP-256QAM	M	Outer_Full	8.593	9.420	PASS
N77-3700-3980	30	10	DFT-QPSK	H	Outer_Full	8.586	9.240	PASS
N77-3700-3980	30	10	DFT-PI2BPSK	H	Outer_Full	8.560	9.420	PASS
N77-3700-3980	30	10	DFT-16QAM	H	Outer_Full	8.567	9.380	PASS
N77-3700-3980	30	10	DFT-64QAM	H	Outer_Full	8.595	9.300	PASS
N77-3700-3980	30	10	DFT-256QAM	H	Outer_Full	8.564	9.560	PASS
N77-3700-3980	30	10	CP-QPSK	H	Outer_Full	8.589	9.600	PASS
N77-3700-3980	30	10	CP-16QAM	H	Outer_Full	8.599	9.840	PASS
N77-3700-3980	30	10	CP-64QAM	H	Outer_Full	8.604	9.760	PASS
N77-3700-3980	30	10	CP-256QAM	H	Outer_Full	8.571	9.460	PASS
N77-3700-3980	30	15	DFT-QPSK	L	Outer_Full	12.905	14.250	PASS
N77-3700-3980	30	15	DFT-PI2BPSK	L	Outer_Full	12.865	14.250	PASS
N77-3700-3980	30	15	DFT-16QAM	L	Outer_Full	12.825	13.920	PASS
N77-3700-3980	30	15	DFT-64QAM	L	Outer_Full	12.889	13.740	PASS
N77-3700-3980	30	15	DFT-256QAM	L	Outer_Full	12.852	13.740	PASS



Unless otherwise agreed in writing, this document is issued by the Company subject to its General Conditions of Service printed overleaf, available on request or accessible at <http://www.sgs.com/en/Terms-and-Conditions.aspx> and, for electronic format documents, subject to Terms and Conditions for Electronic Documents at <http://www.sgs.com/en/Terms-and-Conditions/Terms-e-Documents.aspx>. Attention is drawn to the limitation of liability, indemnification and jurisdiction issues defined therein. Any holder of this document is advised that information contained hereon reflects the Company's findings at the time of its intervention only and within the limits of Client's instructions, if any. The Company's sole responsibility is to its Client and this document does not exonerate parties to a transaction from exercising all their rights and obligations under the transaction documents. This document cannot be reproduced except in full, without prior written approval of the Company. Any unauthorized alteration, forgery or falsification of the content or appearance of this document is unlawful and offenders may be prosecuted to the fullest extent of the law. Unless otherwise stated the results shown in this test report refer only to the sample(s) tested and such sample(s) are retained for 30 days only.

Attention: To check the authenticity of testing/inspection report & certificate, please contact us at telephone: (86-755) 8307 1443, or email: CN.Doccheck@sgs.com

South of No. 6 Plant, No. 1, Pansheng Road, Suzhou Industrial Park, Suzhou Area, China (Jiangsu) Pilot Free Trade Zone 215000 t (86-512) 62992980 www.sgs.com.cn
 中国·苏州·中国(江苏)自由贸易试验区苏州片区苏州工业园区海胜路1号的6号厂房南楼 邮编: 215000 t (86-512) 62992980 sgs.china@sgs.com