

Report No.: SEWA2303000029RG02

Rev.: 01

Page: 1 of 50

Appendix B.39

NR Band n70



Unless otherwise agreed in writing, this document is issued by the Company subject to its General Conditions of Service printed overleaf, available on request or accessible at <http://www.sgs.com/en/Terms-and-Conditions.aspx> and, for electronic format documents, subject to Terms and Conditions for Electronic Documents at <http://www.sgs.com/en/Terms-and-Conditions/Terms-e-Documents.aspx>. Attention is drawn to the limitation of liability, indemnification and jurisdiction issues defined therein. Any holder of this document is advised that information contained hereon reflects the Company's findings at the time of its intervention only and within the limits of Client's instructions, if any. The Company's sole responsibility is to its Client and this document does not exonerate parties to a transaction from exercising all their rights and obligations under the transaction documents. This document cannot be reproduced except in full, without prior written approval of the Company. Any unauthorized alteration, forgery or falsification of the content or appearance of this document is unlawful and offenders may be prosecuted to the fullest extent of the law. Unless otherwise stated the results shown in this test report refer only to the sample(s) tested and such sample(s) are retained for 30 days only.
Attention: To check the authenticity of testing/inspection report & certificate, please contact us at telephone: (86-755) 8307 1443, or email: CN.Doccheck@sgs.com

South of No. 6 Plant, No. 1, Runsheng Road, Suzhou Industrial Park, Suzhou Area, China (Jiangsu) Pilot Free Trade Zone 215000
中国·苏州·中国(江苏)自由贸易试验区苏州片区苏州工业园区润胜路1号的6号厂房南楼 邮编: 215000

t (86-512) 62992980 www.sgs.com.cn
t (86-512) 62992980 sgs.china@sgs.com

Effective (Isotropic) Radiated Power Output Data for SA

Test Result

Band	SCS	Bandwidth	Modulation	Channel	RB Config	Power (dBm)	EIRP (dBm)	Limit	Verdict
N70	15	5	DFT-PI2BPSK	L	Inner_1RB_Left	23.5	22.7	30	PASS
N70	15	5	DFT-PI2BPSK	L	Inner_1RB_Right	23.56	22.76	30	PASS
N70	15	5	DFT-PI2BPSK	L	Outer_Full	23.06	22.26	30	PASS
N70	15	5	DFT-QPSK	L	Inner_1RB_Left	23.58	22.78	30	PASS
N70	15	5	DFT-QPSK	L	Inner_1RB_Right	23.61	22.81	30	PASS
N70	15	5	DFT-QPSK	L	Outer_Full	22.52	21.72	30	PASS
N70	15	5	DFT-16QAM	L	Inner_1RB_Left	22.22	21.42	30	PASS
N70	15	5	DFT-16QAM	L	Inner_1RB_Right	22.23	21.43	30	PASS
N70	15	5	DFT-16QAM	L	Outer_Full	21.94	21.14	30	PASS
N70	15	5	DFT-64QAM	L	Inner_1RB_Left	21.25	20.45	30	PASS
N70	15	5	DFT-64QAM	L	Inner_1RB_Right	21.25	20.45	30	PASS
N70	15	5	DFT-64QAM	L	Outer_Full	21.42	20.62	30	PASS
N70	15	5	DFT-256QAM	L	Inner_1RB_Left	19.5	18.7	30	PASS
N70	15	5	DFT-256QAM	L	Inner_1RB_Right	19.7	18.9	30	PASS
N70	15	5	DFT-256QAM	L	Outer_Full	19.39	18.59	30	PASS
N70	15	5	DFT-PI2BPSK	M	Inner_1RB_Left	23.59	22.79	30	PASS
N70	15	5	DFT-PI2BPSK	M	Inner_1RB_Right	23.59	22.79	30	PASS
N70	15	5	DFT-PI2BPSK	M	Outer_Full	23.11	22.31	30	PASS
N70	15	5	DFT-QPSK	M	Inner_1RB_Left	23.6	22.8	30	PASS
N70	15	5	DFT-QPSK	M	Inner_1RB_Right	23.64	22.84	30	PASS
N70	15	5	DFT-QPSK	M	Outer_Full	22.6	21.8	30	PASS
N70	15	5	DFT-16QAM	M	Inner_1RB_Left	22.25	21.45	30	PASS
N70	15	5	DFT-16QAM	M	Inner_1RB_Right	22.31	21.51	30	PASS
N70	15	5	DFT-16QAM	M	Outer_Full	21.98	21.18	30	PASS
N70	15	5	DFT-64QAM	M	Inner_1RB_Left	21.28	20.48	30	PASS
N70	15	5	DFT-64QAM	M	Inner_1RB_Right	21.26	20.46	30	PASS
N70	15	5	DFT-64QAM	M	Outer_Full	21.38	20.58	30	PASS
N70	15	5	DFT-256QAM	M	Inner_1RB_Left	19.63	18.83	30	PASS
N70	15	5	DFT-256QAM	M	Inner_1RB_Right	19.62	18.82	30	PASS
N70	15	5	DFT-256QAM	M	Outer_Full	19.48	18.68	30	PASS
N70	15	5	DFT-PI2BPSK	H	Inner_1RB_Left	23.64	22.84	30	PASS
N70	15	5	DFT-PI2BPSK	H	Inner_1RB_Right	23.67	22.87	30	PASS



Unless otherwise agreed in writing, this document is issued by the Company subject to its General Conditions of Service printed overleaf, available on request or accessible at <http://www.sgs.com/en/Terms-and-Conditions.aspx> and, for electronic format documents, subject to Terms and Conditions for Electronic Documents at <http://www.sgs.com/en/Terms-and-Conditions/Terms-e-Documents.aspx>. Attention is drawn to the limitation of liability, indemnification and jurisdiction issues defined therein. Any holder of this document is advised that information contained hereon reflects the Company's findings at the time of its intervention only and within the limits of Client's instructions, if any. The Company's sole responsibility is to its Client and this document does not exonerate parties to a transaction from exercising all their rights and obligations under the transaction documents. This document cannot be reproduced except in full, without prior written approval of the Company. Any unauthorized alteration, forgery or falsification of the content or appearance of this document is unlawful and offenders may be prosecuted to the fullest extent of the law. Unless otherwise stated the results shown in this test report refer only to the sample(s) tested and such sample(s) are retained for 30 days only.

Attention: To check the authenticity of testing/inspection report & certificate, please contact us at telephone: (86-755) 8307 1443, or email: CN.Doccheck@sgs.com
 South of No. 6 Plant, No. 1, Runsheng Road, Suzhou Industrial Park, Suzhou Area, China (Jiangsu) Pilot Free Trade Zone 215000 t (86-512) 62992980 www.sgsgroup.com.cn
 中国·苏州·中国(江苏)自由贸易试验区苏州片区苏州工业园区润胜路1号的6号厂房南楼 邮编: 215000 t (86-512) 62992980 sgs.china@sgs.com



Report No.: SEWA2303000029RG02

Rev.: 01

Page: 3 of 50

N70	15	5	DFT-PI2BPSK	H	Outer_Full	23.19	22.39	30	PASS
N70	15	5	DFT-QPSK	H	Inner_1RB_Left	23.66	22.86	30	PASS
N70	15	5	DFT-QPSK	H	Inner_1RB_Right	23.7	22.9	30	PASS
N70	15	5	DFT-QPSK	H	Outer_Full	22.66	21.86	30	PASS
N70	15	5	DFT-16QAM	H	Inner_1RB_Left	22.35	21.55	30	PASS
N70	15	5	DFT-16QAM	H	Inner_1RB_Right	22.33	21.53	30	PASS
N70	15	5	DFT-16QAM	H	Outer_Full	22.02	21.22	30	PASS
N70	15	5	DFT-64QAM	H	Inner_1RB_Left	21.26	20.46	30	PASS
N70	15	5	DFT-64QAM	H	Inner_1RB_Right	21.34	20.54	30	PASS
N70	15	5	DFT-64QAM	H	Outer_Full	21.5	20.7	30	PASS
N70	15	5	DFT-256QAM	H	Inner_1RB_Left	19.65	18.85	30	PASS
N70	15	5	DFT-256QAM	H	Inner_1RB_Right	19.69	18.89	30	PASS
N70	15	5	DFT-256QAM	H	Outer_Full	19.46	18.66	30	PASS
N70	15	10	DFT-PI2BPSK	L	Inner_1RB_Left	23.47	22.67	30	PASS
N70	15	10	DFT-PI2BPSK	L	Inner_1RB_Right	23.62	22.82	30	PASS
N70	15	10	DFT-PI2BPSK	L	Outer_Full	23.07	22.27	30	PASS
N70	15	10	DFT-QPSK	L	Inner_1RB_Left	23.58	22.78	30	PASS
N70	15	10	DFT-QPSK	L	Inner_1RB_Right	23.66	22.86	30	PASS
N70	15	10	DFT-QPSK	L	Outer_Full	22.6	21.8	30	PASS
N70	15	10	DFT-16QAM	L	Inner_1RB_Left	22.33	21.53	30	PASS
N70	15	10	DFT-16QAM	L	Inner_1RB_Right	22.36	21.56	30	PASS
N70	15	10	DFT-16QAM	L	Outer_Full	21.97	21.17	30	PASS
N70	15	10	DFT-64QAM	L	Inner_1RB_Left	21.25	20.45	30	PASS
N70	15	10	DFT-64QAM	L	Inner_1RB_Right	21.27	20.47	30	PASS
N70	15	10	DFT-64QAM	L	Outer_Full	21.39	20.59	30	PASS
N70	15	10	DFT-256QAM	L	Inner_1RB_Left	19.62	18.82	30	PASS
N70	15	10	DFT-256QAM	L	Inner_1RB_Right	19.65	18.85	30	PASS
N70	15	10	DFT-256QAM	L	Outer_Full	19.39	18.59	30	PASS
N70	15	10	DFT-PI2BPSK	M	Inner_1RB_Left	23.54	22.74	30	PASS
N70	15	10	DFT-PI2BPSK	M	Inner_1RB_Right	23.66	22.86	30	PASS
N70	15	10	DFT-PI2BPSK	M	Outer_Full	23.14	22.34	30	PASS
N70	15	10	DFT-QPSK	M	Inner_1RB_Left	23.63	22.83	30	PASS
N70	15	10	DFT-QPSK	M	Inner_1RB_Right	23.73	22.93	30	PASS
N70	15	10	DFT-QPSK	M	Outer_Full	22.64	21.84	30	PASS
N70	15	10	DFT-16QAM	M	Inner_1RB_Left	22.29	21.49	30	PASS
N70	15	10	DFT-16QAM	M	Inner_1RB_Right	22.33	21.53	30	PASS
N70	15	10	DFT-16QAM	M	Outer_Full	21.94	21.14	30	PASS



Unless otherwise agreed in writing, this document is issued by the Company subject to its General Conditions of Service printed overleaf, available on request or accessible at <http://www.sgs.com/en/Terms-and-Conditions.aspx> and, for electronic format documents, subject to Terms and Conditions for Electronic Documents at <http://www.sgs.com/en/Terms-and-Conditions/Terms-e-Documents.aspx>. Attention is drawn to the limitation of liability, indemnification and jurisdiction issues defined therein. Any holder of this document is advised that information contained hereon reflects the Company's findings at the time of its intervention only and within the limits of Client's instructions, if any. The Company's sole responsibility is to its Client and this document does not exonerate parties to a transaction from exercising all their rights and obligations under the transaction documents. This document cannot be reproduced except in full, without prior written approval of the Company. Any unauthorized alteration, forgery or falsification of the content or appearance of this document is unlawful and offenders may be prosecuted to the fullest extent of the law. Unless otherwise stated the results shown in this test report refer only to the sample(s) tested and such sample(s) are retained for 30 days only.

Attention: to check the authenticity of testing/inspection report & certificate, please contact us at telephone: (86-755) 8307 1443, or email: CN.Doccheck@sgs.com

South of No. 6 Plant, No. 1, Runsheng Road, Suzhou Industrial Park, Suzhou Area, China (Jiangsu) Pilot Free Trade Zone 215000
 中国·苏州·中国(江苏)自由贸易试验区苏州片区苏州工业园区润胜路1号的6号厂房南楼 邮编: 215000

t (86-512) 62992980 www.sgs.com.cn
 t (86-512) 62992980 sgs.china@sgs.com



Report No.: SEWA2303000029RG02

Rev.: 01

Page: 4 of 50

N70	15	10	DFT-64QAM	M	Inner_1RB_Left	21.2	20.4	30	PASS
N70	15	10	DFT-64QAM	M	Inner_1RB_Right	21.33	20.53	30	PASS
N70	15	10	DFT-64QAM	M	Outer_Full	21.36	20.56	30	PASS
N70	15	10	DFT-256QAM	M	Inner_1RB_Left	19.52	18.72	30	PASS
N70	15	10	DFT-256QAM	M	Inner_1RB_Right	19.36	18.56	30	PASS
N70	15	10	DFT-256QAM	M	Outer_Full	19.78	18.98	30	PASS
N70	15	10	DFT-PI2BPSK	H	Inner_1RB_Left	23.58	22.78	30	PASS
N70	15	10	DFT-PI2BPSK	H	Inner_1RB_Right	23.68	22.88	30	PASS
N70	15	10	DFT-PI2BPSK	H	Outer_Full	23.13	22.33	30	PASS
N70	15	10	DFT-QPSK	H	Inner_1RB_Left	23.64	22.84	30	PASS
N70	15	10	DFT-QPSK	H	Inner_1RB_Right	23.75	22.95	30	PASS
N70	15	10	DFT-QPSK	H	Outer_Full	22.63	21.83	30	PASS
N70	15	10	DFT-16QAM	H	Inner_1RB_Left	22.27	21.47	30	PASS
N70	15	10	DFT-16QAM	H	Inner_1RB_Right	22.35	21.55	30	PASS
N70	15	10	DFT-16QAM	H	Outer_Full	21.99	21.19	30	PASS
N70	15	10	DFT-64QAM	H	Inner_1RB_Left	21.25	20.45	30	PASS
N70	15	10	DFT-64QAM	H	Inner_1RB_Right	21.36	20.56	30	PASS
N70	15	10	DFT-64QAM	H	Outer_Full	21.47	20.67	30	PASS
N70	15	10	DFT-256QAM	H	Inner_1RB_Left	19.69	18.89	30	PASS
N70	15	10	DFT-256QAM	H	Inner_1RB_Right	19.71	18.91	30	PASS
N70	15	10	DFT-256QAM	H	Outer_Full	19.51	18.71	30	PASS
N70	15	15	DFT-PI2BPSK	L	Inner_1RB_Left	23.51	22.71	30	PASS
N70	15	15	DFT-PI2BPSK	L	Inner_1RB_Right	23.7	22.9	30	PASS
N70	15	15	DFT-PI2BPSK	L	Outer_Full	23.14	22.34	30	PASS
N70	15	15	DFT-QPSK	L	Inner_1RB_Left	23.62	22.82	30	PASS
N70	15	15	DFT-QPSK	L	Inner_1RB_Right	23.72	22.92	30	PASS
N70	15	15	DFT-QPSK	L	Outer_Full	22.65	21.85	30	PASS
N70	15	15	DFT-16QAM	L	Inner_1RB_Left	21.63	20.83	30	PASS
N70	15	15	DFT-16QAM	L	Inner_1RB_Right	21.25	20.45	30	PASS
N70	15	15	DFT-16QAM	L	Outer_Full	21.53	20.73	30	PASS
N70	15	15	DFT-64QAM	L	Inner_1RB_Left	20.36	19.56	30	PASS
N70	15	15	DFT-64QAM	L	Inner_1RB_Right	20.21	19.41	30	PASS
N70	15	15	DFT-64QAM	L	Outer_Full	20.52	19.72	30	PASS
N70	15	15	DFT-256QAM	L	Inner_1RB_Left	19.23	18.43	30	PASS
N70	15	15	DFT-256QAM	L	Inner_1RB_Right	19.03	18.23	30	PASS
N70	15	15	DFT-256QAM	L	Outer_Full	18.85	18.05	30	PASS
N70	15	15	DFT-PI2BPSK	M	Inner_1RB_Left	23.47	22.67	30	PASS



Unless otherwise agreed in writing, this document is issued by the Company subject to its General Conditions of Service printed overleaf, available on request or accessible at <http://www.sgs.com/en/Terms-and-Conditions.aspx> and, for electronic format documents, subject to Terms and Conditions for Electronic Documents at <http://www.sgs.com/en/Terms-and-Conditions/Terms-e-Documents.aspx>. Attention is drawn to the limitation of liability, indemnification and jurisdiction issues defined therein. Any holder of this document is advised that information contained hereon reflects the Company's findings at the time of its intervention only and within the limits of Client's instructions, if any. The Company's sole responsibility is to its Client and this document does not exonerate parties to a transaction from exercising all their rights and obligations under the transaction documents. This document cannot be reproduced except in full, without prior written approval of the Company. Any unauthorized alteration, forgery or falsification of the content or appearance of this document is unlawful and offenders may be prosecuted to the fullest extent of the law. Unless otherwise stated the results shown in this test report refer only to the sample(s) tested and such sample(s) are retained for 30 days only.

Attention: to check the authenticity of testing/inspection report & certificate, please contact us at telephone: (86-755) 8307 1443, or email: CN.Doccheck@sgs.com

South of No. 6 Plant, No. 1, Runsheng Road, Suzhou Industrial Park, Suzhou Area, China (Jiangsu) Pilot Free Trade Zone
 中国·苏州·中国(江苏)自由贸易试验区苏州片区苏州工业园区润胜路1号的6号厂房南楼 邮编: 215000

t (86-512) 62992980 www.sgs.com.cn
 t (86-512) 62992980 sgs.china@sgs.com



Report No.: SEWA2303000029RG02

Rev.: 01

Page: 5 of 50

N70	15	15	DFT-PI2BPSK	M	Inner_1RB_Right	23.69	22.89	30	PASS
N70	15	15	DFT-PI2BPSK	M	Outer_Full	23.17	22.37	30	PASS
N70	15	15	DFT-QPSK	M	Inner_1RB_Left	23.59	22.79	30	PASS
N70	15	15	DFT-QPSK	M	Inner_1RB_Right	23.74	22.94	30	PASS
N70	15	15	DFT-QPSK	M	Outer_Full	22.66	21.86	30	PASS
N70	15	15	DFT-16QAM	M	Inner_1RB_Left	22.25	21.45	30	PASS
N70	15	15	DFT-16QAM	M	Inner_1RB_Right	22.42	21.62	30	PASS
N70	15	15	DFT-16QAM	M	Outer_Full	22.03	21.23	30	PASS
N70	15	15	DFT-64QAM	M	Inner_1RB_Left	21.26	20.46	30	PASS
N70	15	15	DFT-64QAM	M	Inner_1RB_Right	21.36	20.56	30	PASS
N70	15	15	DFT-64QAM	M	Outer_Full	21.57	20.77	30	PASS
N70	15	15	DFT-256QAM	M	Inner_1RB_Left	19.54	18.74	30	PASS
N70	15	15	DFT-256QAM	M	Inner_1RB_Right	19.73	18.93	30	PASS
N70	15	15	DFT-256QAM	M	Outer_Full	19.44	18.64	30	PASS
N70	15	15	DFT-PI2BPSK	H	Inner_1RB_Left	23	22.2	30	PASS
N70	15	15	DFT-PI2BPSK	H	Inner_1RB_Right	23.69	22.89	30	PASS
N70	15	15	DFT-PI2BPSK	H	Outer_Full	23.16	22.36	30	PASS
N70	15	15	DFT-QPSK	H	Inner_1RB_Left	23.6	22.8	30	PASS
N70	15	15	DFT-QPSK	H	Inner_1RB_Right	23.74	22.94	30	PASS
N70	15	15	DFT-QPSK	H	Outer_Full	22.64	21.84	30	PASS
N70	15	15	DFT-16QAM	H	Inner_1RB_Left	22.31	21.51	30	PASS
N70	15	15	DFT-16QAM	H	Inner_1RB_Right	22.37	21.57	30	PASS
N70	15	15	DFT-16QAM	H	Outer_Full	22.03	21.23	30	PASS
N70	15	15	DFT-64QAM	H	Inner_1RB_Left	21.23	20.43	30	PASS
N70	15	15	DFT-64QAM	H	Inner_1RB_Right	21.43	20.63	30	PASS
N70	15	15	DFT-64QAM	H	Outer_Full	21.56	20.76	30	PASS
N70	15	15	DFT-256QAM	H	Inner_1RB_Left	19.64	18.84	30	PASS
N70	15	15	DFT-256QAM	H	Inner_1RB_Right	19.78	18.98	30	PASS
N70	15	15	DFT-256QAM	H	Outer_Full	19.42	18.62	30	PASS



Unless otherwise agreed in writing, this document is issued by the Company subject to its General Conditions of Service printed overleaf, available on request or accessible at <http://www.sgs.com/en/Terms-and-Conditions.aspx> and, for electronic format documents, subject to Terms and Conditions for Electronic Documents at <http://www.sgs.com/en/Terms-and-Conditions/Terms-e-Documents.aspx>. Attention is drawn to the limitation of liability, indemnification and jurisdiction issues defined therein. Any holder of this document is advised that information contained hereon reflects the Company's findings at the time of its intervention only and within the limits of Client's instructions, if any. The Company's sole responsibility is to its Client and this document does not exonerate parties to a transaction from exercising all their rights and obligations under the transaction documents. This document cannot be reproduced except in full, without prior written approval of the Company. Any unauthorized alteration, forgery or falsification of the content or appearance of this document is unlawful and offenders may be prosecuted to the fullest extent of the law. Unless otherwise stated the results shown in this test report refer only to the sample(s) tested and such sample(s) are retained for 30 days only.

Attention: To check the authenticity of testing/inspection report & certificate, please contact us at telephone: (86-755) 8307 1443, or email: CN.Doccheck@sgs.com
 South of No. 6 Plant, No. 1, Runsheng Road, Suzhou Industrial Park, Suzhou Area, China (Jiangsu) Pilot Free Trade Zone 215000 t (86-512) 62992980 www.sgsgroup.com.cn
 中国·苏州·中国(江苏)自由贸易试验区苏州片区苏州工业园区润胜路1号的6号厂房南楼 邮编: 215000 t (86-512) 62992980 sgs.china@sgs.com

Peak-to-Average Ratio for SA

Peak-to-Average Ratio(PAPR)

Test Result

Band	SCS	Bandwidth	Modulation	Channel	RB Config	DutyCycle	Factor	Result	Limit	Verdict
N70	15	15	DFT-256QAM	L	Outer_Full	100%	0.00	8.81	≤13	PASS
N70	15	15	CP-256QAM	L	Outer_Full	100%	0.00	9.64	≤13	PASS
N70	15	15	DFT-256QAM	M	Outer_Full	100%	0.00	8.83	≤13	PASS
N70	15	15	CP-256QAM	M	Outer_Full	100%	0.00	9.67	≤13	PASS
N70	15	15	DFT-256QAM	H	Outer_Full	100%	0.00	8.89	≤13	PASS
N70	15	15	CP-256QAM	H	Outer_Full	100%	0.00	9.72	≤13	PASS

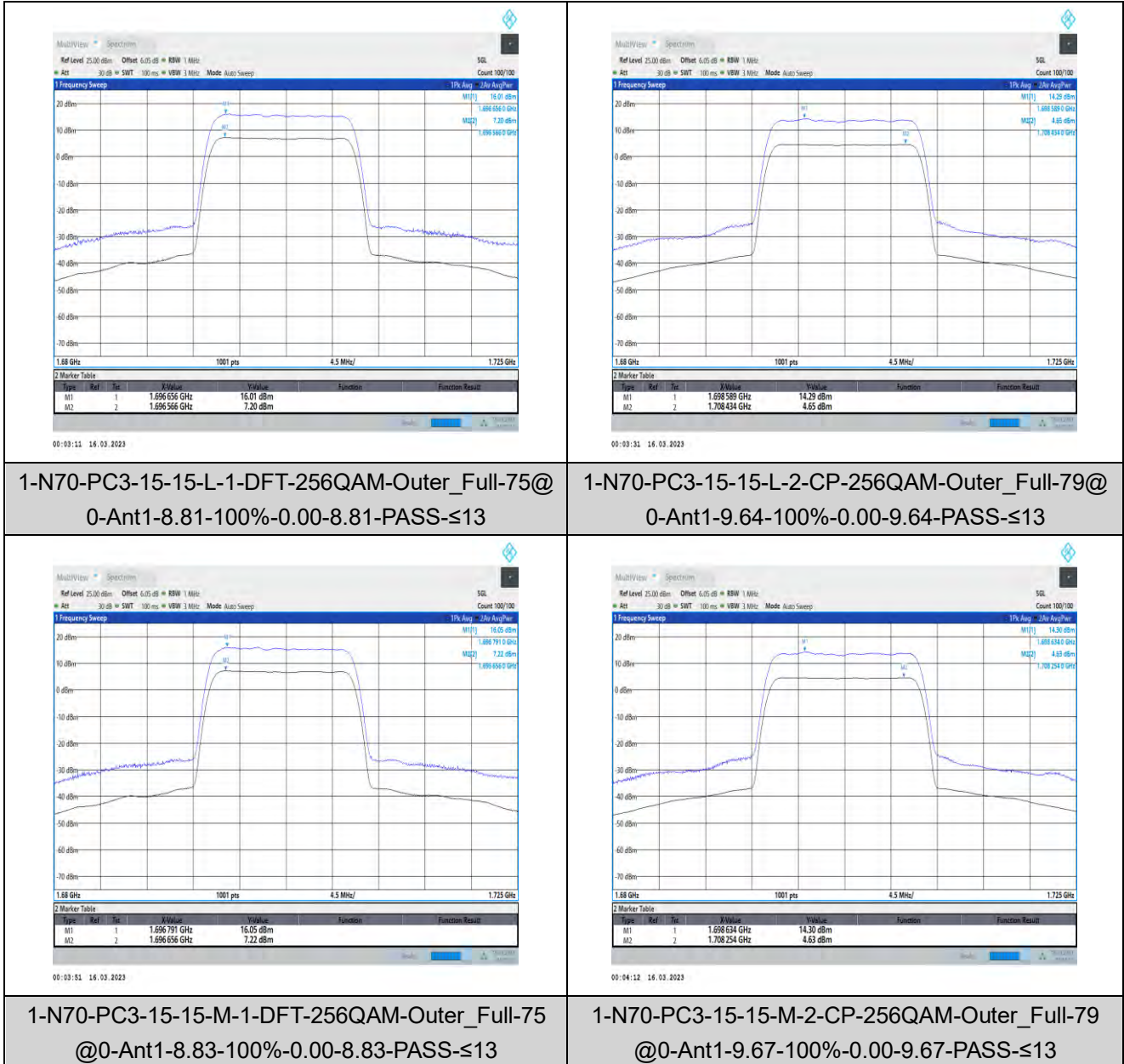


Unless otherwise agreed in writing, this document is issued by the Company subject to its General Conditions of Service printed overleaf, available on request or accessible at <http://www.sgs.com/en/Terms-and-Conditions.aspx> and, for electronic format documents, subject to Terms and Conditions for Electronic Documents at <http://www.sgs.com/en/Terms-and-Conditions/Terms-e-Documents.aspx>. Attention is drawn to the limitation of liability, indemnification and jurisdiction issues defined therein. Any holder of this document is advised that information contained hereon reflects the Company's findings at the time of its intervention only and within the limits of Client's instructions, if any. The Company's sole responsibility is to its Client and this document does not exonerate parties to a transaction from exercising all their rights and obligations under the transaction documents. This document cannot be reproduced except in full, without prior written approval of the Company. Any unauthorized alteration, forgery or falsification of the content or appearance of this document is unlawful and offenders may be prosecuted to the fullest extent of the law. Unless otherwise stated the results shown in this test report refer only to the sample(s) tested and such sample(s) are retained for 30 days only.
Attention: To check the authenticity of testing/inspection report & certificate, please contact us at telephone: (86-755) 8307 1443, or email: CN.Doccheck@sgs.com

South of No. 6 Plant, No. 1, Runsheng Road, Suzhou Industrial Park, Suzhou Area, China (Jiangsu) Pilot Free Trade Zone 215000
 中国·苏州·中国(江苏)自由贸易试验区苏州片区苏州工业园区润胜路1号的6号厂房南楼 邮编: 215000

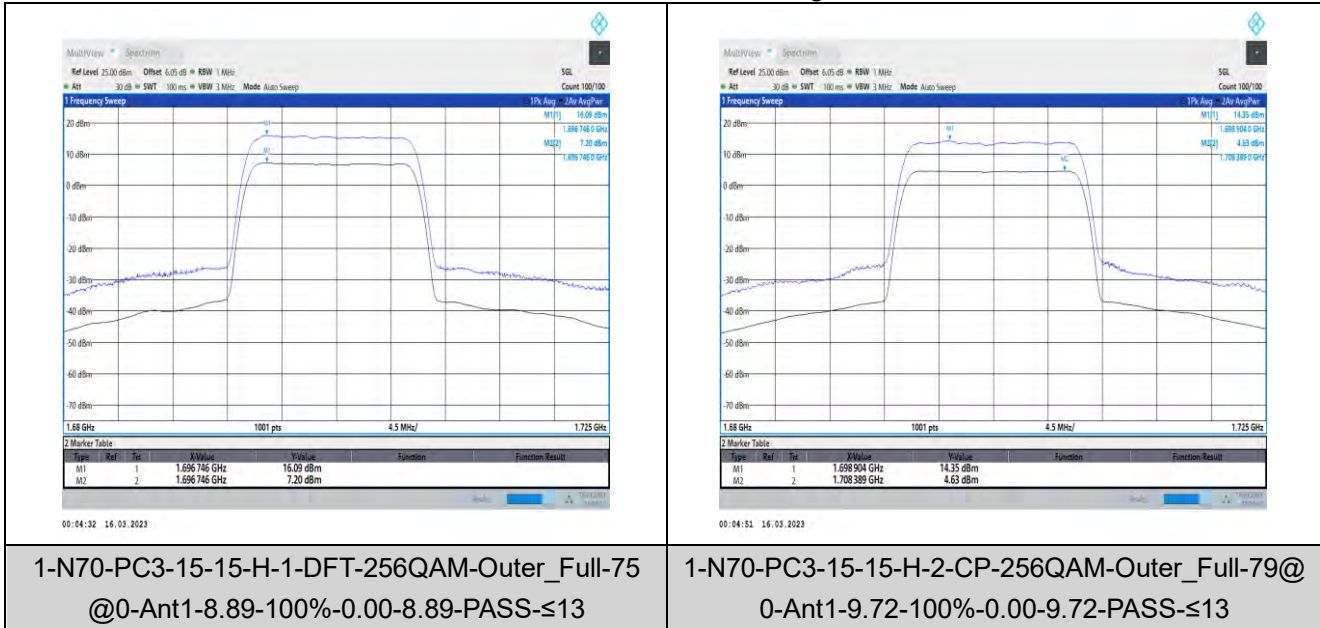
t (86-512) 62992980 www.sgsgroup.com.cn
 t (86-512) 62992980 sgs.china@sgs.com

Test Graphs



Unless otherwise agreed in writing, this document is issued by the Company subject to its General Conditions of Service printed overleaf, available on request or accessible at <http://www.sgs.com/en/Terms-and-Conditions.aspx> and, for electronic format documents, subject to Terms and Conditions for Electronic Documents at <http://www.sgs.com/en/Terms-and-Conditions/Terms-e-Documents.aspx>. Attention is drawn to the limitation of liability, indemnification and jurisdiction issues defined therein. Any holder of this document is advised that information contained hereon reflects the Company's findings at the time of its intervention only and within the limits of the Client's instructions, if any. The Company's sole responsibility is to its Client and this document does not exonerate parties to a transaction from exercising all their rights and obligations under the transaction documents. This document cannot be reproduced except in full, without prior written approval of the Company. Any unauthorized alteration, forgery or falsification of the content or appearance of this document is unlawful and offenders may be prosecuted to the fullest extent of the law. Unless otherwise stated the results shown in this test report refer only to the sample(s) tested and such sample(s) are retained for 30 days only.

Attention: To check the authenticity of testing/inspection report & certificate, please contact us at telephone: (86-755) 8307 1443, or email: CN.Doccheck@sgs.com
 South of No. 6 Plant, No. 1, Runsheng Road, Suzhou Industrial Park, Suzhou Area, China (Jiangsu) Pilot Free Trade Zone 215000 t (86-512) 62992980 www.sgsgroup.com.cn
 中国·苏州·中国(江苏)自由贸易试验区苏州片区苏州工业园区润胜路1号的6号厂房南楼 邮编: 215000 t (86-512) 62992980 sgs.china@sgs.com



1-N70-PC3-15-15-H-1-DFT-256QAM-Outer_Full-75
@0-Ant1-8.89-100%-0.00-8.89-PASS-≤13

1-N70-PC3-15-15-H-2-CP-256QAM-Outer_Full-79@
0-Ant1-9.72-100%-0.00-9.72-PASS-≤13



Unless otherwise agreed in writing, this document is issued by the Company subject to its General Conditions of Service printed overleaf, available on request or accessible at <http://www.sgs.com/en/Terms-and-Conditions.aspx> and, for electronic format documents, subject to Terms and Conditions for Electronic Documents at <http://www.sgs.com/en/Terms-and-Conditions/Terms-e-Documents.aspx>. Attention is drawn to the limitation of liability, indemnification and jurisdiction issues defined therein. Any holder of this document is advised that information contained hereon reflects the Company's findings at the time of its intervention only and within the limits of Client's instructions, if any. The Company's sole responsibility is to its Client and this document does not exonerate parties to a transaction from exercising all their rights and obligations under the transaction documents. This document cannot be reproduced except in full, without prior written approval of the Company. Any unauthorized alteration, forgery or falsification of the content or appearance of this document is unlawful and offenders may be prosecuted to the fullest extent of the law. Unless otherwise stated the results shown in this test report refer only to the sample(s) tested and such sample(s) are retained for 30 days only.

Attention: To check the authenticity of testing/inspection report & certificate, please contact us at telephone: (86-755) 8307 1443, or email: CN.Doccheck@sgs.com
 South of No. 6 Plant, No. 1, Runsheng Road, Suzhou Industrial Park, Suzhou Area, China (Jiangsu) Pilot Free Trade Zone 215000 t (86-512) 62992980 www.sgs.com.cn
 中国·苏州·中国(江苏)自由贸易试验区苏州片区苏州工业园区润胜路1号的6号厂房南楼 邮编: 215000 t (86-512) 62992980 sgs.china@sgs.com

Modulation characteristics for SA

Test Result

Band	SCS	Bandwidth	Modulation	Channel	RB Config	Result	Verdict
N70	15	15	DFT-PI2BPSK	M	Outer_Full	see graph	PASS
N70	15	15	DFT-QPSK	M	Outer_Full	see graph	PASS
N70	15	15	DFT-16QAM	M	Outer_Full	see graph	PASS
N70	15	15	DFT-64QAM	M	Outer_Full	see graph	PASS
N70	15	15	DFT-256QAM	M	Outer_Full	see graph	PASS
N70	15	15	CP-QPSK	M	Outer_Full	see graph	PASS
N70	15	15	CP-16QAM	M	Outer_Full	see graph	PASS
N70	15	15	CP-64QAM	M	Outer_Full	see graph	PASS
N70	15	15	CP-256QAM	M	Outer_Full	see graph	PASS



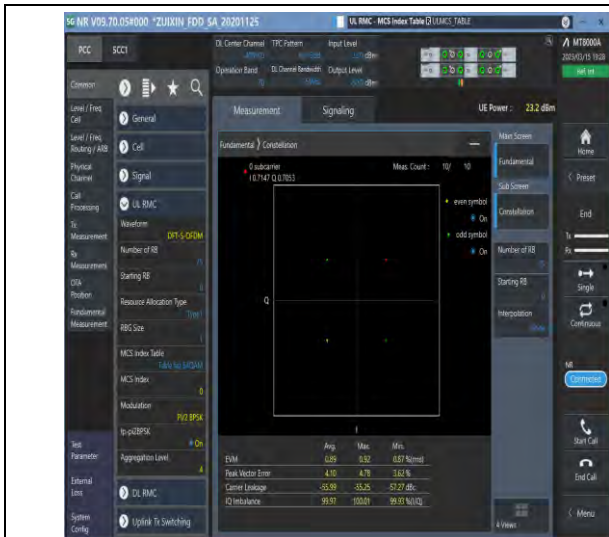
Unless otherwise agreed in writing, this document is issued by the Company subject to its General Conditions of Service printed overleaf, available on request or accessible at <http://www.sgs.com/en/Terms-and-Conditions.aspx> and, for electronic format documents, subject to Terms and Conditions for Electronic Documents at <http://www.sgs.com/en/Terms-and-Conditions/Terms-e-Documents.aspx>. Attention is drawn to the limitation of liability, indemnification and jurisdiction issues defined therein. Any holder of this document is advised that information contained hereon reflects the Company's findings at the time of its intervention only and within the limits of Client's instructions, if any. The Company's sole responsibility is to its Client and this document does not exonerate parties to a transaction from exercising all their rights and obligations under the transaction documents. This document cannot be reproduced except in full, without prior written approval of the Company. Any unauthorized alteration, forgery or falsification of the content or appearance of this document is unlawful and offenders may be prosecuted to the fullest extent of the law. Unless otherwise stated the results shown in this test report refer only to the sample(s) tested and such sample(s) are retained for 30 days only.

Attention: To check the authenticity of testing/inspection report & certificate, please contact us at telephone: (86-755) 8307 1443, or email: CN.Doccheck@sgs.com

South of No. 6 Plant, No. 1, Runsheng Road, Suzhou Industrial Park, Suzhou Area, China (Jiangsu) Pilot Free Trade Zone 215000
中国·苏州·中国(江苏)自由贸易试验区苏州片区苏州工业园区润胜路1号的6号厂房南楼 邮编: 215000

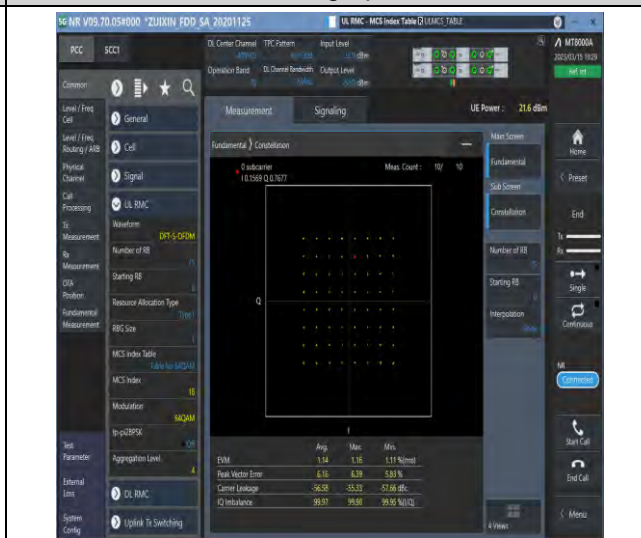
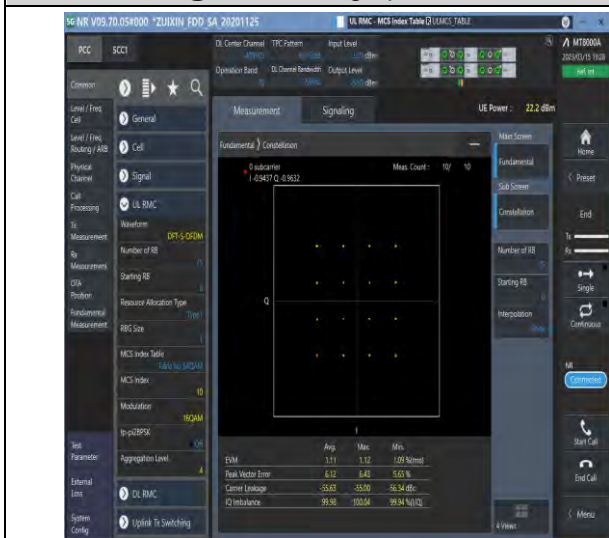
t (86-512) 62992980 www.sgsgroup.com.cn
t (86-512) 62992980 sgs.china@sgs.com

Test Graphs



1-N70-PC3-15-15-M-1-DFT-PI2BPSK-Outer_Full-75
 @0-Ant1-see graph-PASS

1-N70-PC3-15-15-M-2-DFT-QPSK-Outer_Full-75@
 0-Ant1-see graph-PASS



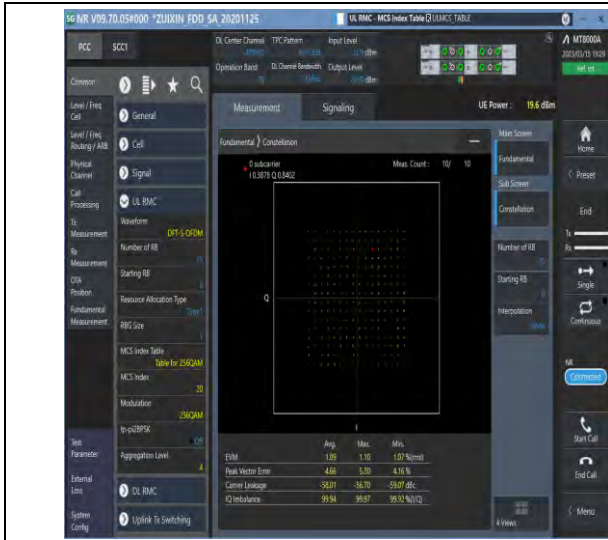
1-N70-PC3-15-15-M-3-DFT-16QAM-Outer_Full-75@
 0-Ant1-see graph-PASS

1-N70-PC3-15-15-M-4-DFT-64QAM-Outer_Full-75
 @0-Ant1-see graph-PASS

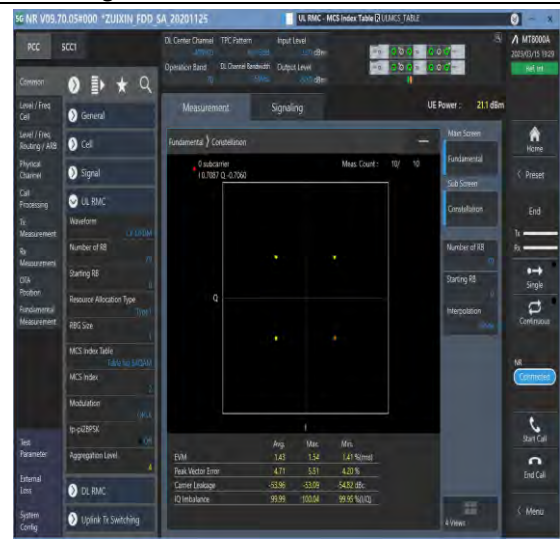


Unless otherwise agreed in writing, this document is issued by the Company subject to its General Conditions of Service printed overleaf, available on request or accessible at <http://www.sgs.com/en/Terms-and-Conditions.aspx> and, for electronic format documents, subject to Terms and Conditions for Electronic Documents at <http://www.sgs.com/en/Terms-and-Conditions/Terms-e-Documents.aspx>. Attention is drawn to the limitation of liability, indemnification and jurisdiction issues defined therein. Any holder of this document is advised that information contained hereon reflects the Company's findings at the time of its intervention only and within the limits of Client's instructions, if any. The Company's sole responsibility is to its Client and this document does not exonerate parties to a transaction from exercising all their rights and obligations under the transaction documents. This document cannot be reproduced except in full, without prior written approval of the Company. Any unauthorized alteration, forgery or falsification of the content or appearance of this document is unlawful and offenders may be prosecuted to the fullest extent of the law. Unless otherwise stated the results shown in this test report refer only to the sample(s) tested and such sample(s) are retained for 30 days only.

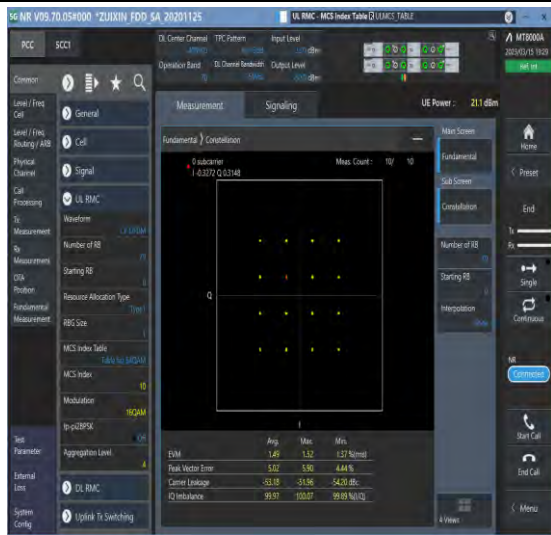
Attention: To check the authenticity of testing/inspection report & certificate, please contact us at telephone: (86-755) 8307 1443, or email: CN.Doccheck@sgs.com
 South of No. 6 Plant, No. 1, Runsheng Road, Suzhou Industrial Park, Suzhou Area, China (Jiangsu) Pilot Free Trade Zone 215000 t (86-512) 62992980 www.sgs.com.cn
 中国·苏州·中国(江苏)自由贸易试验区苏州片区苏州工业园区润胜路1号的6号厂房南楼 邮编: 215000 t (86-512) 62992980 sgs.china@sgs.com



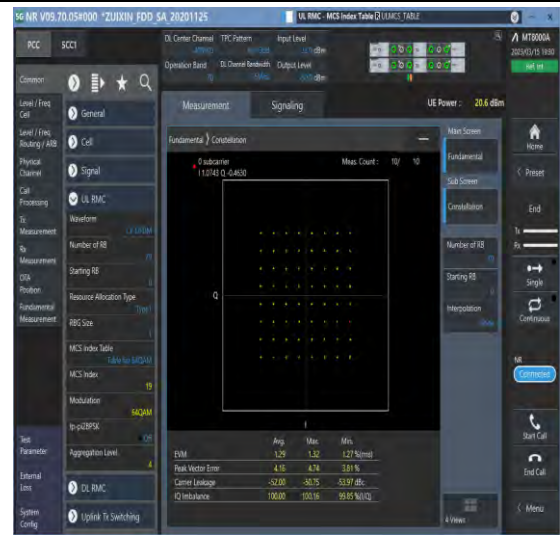
1-N70-PC3-15-15-M-5-DFT-256QAM-Outer_Full-75 @0-Ant1-see graph-PASS



1-N70-PC3-15-15-M-6-CP-QPSK-Outer_Full-79@0-Ant1-see graph-PASS



1-N70-PC3-15-15-M-7-CP-16QAM-Outer_Full-79@0-Ant1-see graph-PASS



1-N70-PC3-15-15-M-8-CP-64QAM-Outer_Full-79@0-Ant1-see graph-PASS



Unless otherwise agreed in writing, this document is issued by the Company subject to its General Conditions of Service printed overleaf, available on request or accessible at <http://www.sgs.com/en/Terms-and-Conditions.aspx> and, for electronic format documents, subject to Terms and Conditions for Electronic Documents at <http://www.sgs.com/en/Terms-and-Conditions/Terms-e-Documents.aspx>. Attention is drawn to the limitation of liability, indemnification and jurisdiction issues defined therein. Any holder of this document is advised that information contained hereon reflects the Company's findings at the time of its intervention only and within the limits of Client's instructions, if any. The Company's sole responsibility is to its Client and this document does not exonerate parties to a transaction from exercising all their rights and obligations under the transaction documents. This document cannot be reproduced except in full, without prior written approval of the Company. Any unauthorized alteration, forgery or falsification of the content or appearance of this document is unlawful and offenders may be prosecuted to the fullest extent of the law. Unless otherwise stated the results shown in this test report refer only to the sample(s) tested and such sample(s) are retained for 30 days only.

South of No. 6 Plant, No. 1, Runsheng Road, Suzhou Industrial Park, Suzhou Area, China (Jiangsu) Pilot Free Trade Zone
 中国·苏州·中国(江苏)自由贸易试验区苏州片区苏州工业园区润胜路1号的6号厂房南座 邮编: 215000

t (86-512) 62992980 www.sgs.com.cn
 t (86-512) 62992980 sgs.china@sgs.com

	Av	Min	Max
EVM	1.56	1.19	1.93
Peak Vector Error	3.46	3.85	3.11%
Carrier Leakage	-54.63	-53.89	-55.19 dBc
IQ Imbalance	100.06	100.12	100.06 %/1Q

1-N70-PC3-15-15-M-9-CP-256QAM-Outer_Full-79@
0-Ant1-see graph-PASS



Unless otherwise agreed in writing, this document is issued by the Company subject to its General Conditions of Service printed overleaf, available on request or accessible at <http://www.sgs.com/en/Terms-and-Conditions.aspx> and, for electronic format documents, subject to Terms and Conditions for Electronic Documents at <http://www.sgs.com/en/Terms-and-Conditions/Terms-e-Documents.aspx>. Attention is drawn to the limitation of liability, indemnification and jurisdiction issues defined therein. Any holder of this document is advised that information contained hereon reflects the Company's findings at the time of its intervention only and within the limits of Client's instructions, if any. The Company's sole responsibility is to its Client and this document does not exonerate parties to a transaction from exercising all their rights and obligations under the transaction documents. This document cannot be reproduced except in full, without prior written approval of the Company. Any unauthorized alteration, forgery or falsification of the content or appearance of this document is unlawful and offenders may be prosecuted to the fullest extent of the law. Unless otherwise stated the results shown in this test report refer only to the sample(s) tested and such sample(s) are retained for 30 days only.

Attention: To check the authenticity of testing/inspection report & certificate, please contact us at telephone: (86-755) 8307 1443, or email: CN.Doccheck@sgs.com

South of No. 6 Plant, No. 1, Runsheng Road, Suzhou Industrial Park, Suzhou Area, China (Jiangsu) Pilot Free Trade Zone	215000	t (86-512) 62992980	www.sgsgroup.com.cn
中国·苏州·中国(江苏)自由贸易试验区苏州片区苏州工业园区润胜路1号的6号厂房南座	邮编: 215000	t (86-512) 62992980	sgs.china@sgs.com

26dB Bandwidth and Occupied Bandwidth for SA

Test Result

Band	SCS	Bandwidth	Modulation	Channel	RB Config	Result (99%)	Result (26dB)	Verdict
N70	15	5	DFT-QPSK	L	Outer_Full	4.469	4.810	PASS
N70	15	5	DFT-PI2BPSK	L	Outer_Full	4.47	4.810	PASS
N70	15	5	DFT-16QAM	L	Outer_Full	4.464	4.840	PASS
N70	15	5	DFT-64QAM	L	Outer_Full	4.471	4.770	PASS
N70	15	5	DFT-256QAM	L	Outer_Full	4.466	4.830	PASS
N70	15	5	CP-QPSK	L	Outer_Full	4.467	4.820	PASS
N70	15	5	CP-16QAM	L	Outer_Full	4.465	4.810	PASS
N70	15	5	CP-64QAM	L	Outer_Full	4.469	4.780	PASS
N70	15	5	CP-256QAM	L	Outer_Full	4.466	4.780	PASS
N70	15	5	DFT-QPSK	M	Outer_Full	4.454	4.820	PASS
N70	15	5	DFT-PI2BPSK	M	Outer_Full	4.477	4.830	PASS
N70	15	5	DFT-16QAM	M	Outer_Full	4.463	4.810	PASS
N70	15	5	DFT-64QAM	M	Outer_Full	4.463	4.790	PASS
N70	15	5	DFT-256QAM	M	Outer_Full	4.454	4.800	PASS
N70	15	5	CP-QPSK	M	Outer_Full	4.465	4.870	PASS
N70	15	5	CP-16QAM	M	Outer_Full	4.469	4.860	PASS
N70	15	5	CP-64QAM	M	Outer_Full	4.466	4.830	PASS
N70	15	5	CP-256QAM	M	Outer_Full	4.471	4.820	PASS
N70	15	5	DFT-QPSK	H	Outer_Full	4.466	4.790	PASS
N70	15	5	DFT-PI2BPSK	H	Outer_Full	4.467	4.780	PASS
N70	15	5	DFT-16QAM	H	Outer_Full	4.467	4.800	PASS
N70	15	5	DFT-64QAM	H	Outer_Full	4.456	4.790	PASS
N70	15	5	DFT-256QAM	H	Outer_Full	4.462	4.750	PASS
N70	15	5	CP-QPSK	H	Outer_Full	4.463	4.830	PASS
N70	15	5	CP-16QAM	H	Outer_Full	4.47	4.850	PASS
N70	15	5	CP-64QAM	H	Outer_Full	4.476	4.790	PASS
N70	15	5	CP-256QAM	H	Outer_Full	4.474	4.840	PASS
N70	15	10	DFT-QPSK	L	Outer_Full	8.903	9.420	PASS
N70	15	10	DFT-PI2BPSK	L	Outer_Full	8.909	9.420	PASS
N70	15	10	DFT-16QAM	L	Outer_Full	8.907	9.380	PASS
N70	15	10	DFT-64QAM	L	Outer_Full	8.911	9.400	PASS
N70	15	10	DFT-256QAM	L	Outer_Full	8.909	9.360	PASS



Unless otherwise agreed in writing, this document is issued by the Company subject to its General Conditions of Service printed overleaf, available on request or accessible at <http://www.sgs.com/en/Terms-and-Conditions.aspx> and, for electronic format documents, subject to Terms and Conditions for Electronic Documents at <http://www.sgs.com/en/Terms-and-Conditions/Terms-e-Documents.aspx>. Attention is drawn to the limitation of liability, indemnification and jurisdiction issues defined therein. Any holder of this document is advised that information contained hereon reflects the Company's findings at the time of its intervention only and within the limits of Client's instructions, if any. The Company's sole responsibility is to its Client and this document does not exonerate parties to a transaction from exercising all their rights and obligations under the transaction documents. This document cannot be reproduced except in full, without prior written approval of the Company. Any unauthorized alteration, forgery or falsification of the content or appearance of this document is unlawful and offenders may be prosecuted to the fullest extent of the law. Unless otherwise stated the results shown in this test report refer only to the sample(s) tested and such sample(s) are retained for 30 days only.

Attention: To check the authenticity of testing/inspection report & certificate, please contact us at telephone: (86-755) 8307 1443, or email: CN.Doccheck@sgs.com
 South of No. 6 Plant, No. 1, Runsheng Road, Suzhou Industrial Park, Suzhou Area, China (Jiangsu) Pilot Free Trade Zone 215000 t (86-512) 62992980 www.sgs.com.cn
 中国·苏州·中国(江苏)自由贸易试验区苏州片区苏州工业园区润胜路1号的6号厂房南楼 邮编: 215000 t (86-512) 62992980 sgs.china@sgs.com

N70	15	10	CP-QPSK	L	Outer_Full	9.274	9.800	PASS
N70	15	10	CP-16QAM	L	Outer_Full	9.27	9.740	PASS
N70	15	10	CP-64QAM	L	Outer_Full	9.276	9.780	PASS
N70	15	10	CP-256QAM	L	Outer_Full	9.289	9.800	PASS
N70	15	10	DFT-QPSK	M	Outer_Full	8.924	9.420	PASS
N70	15	10	DFT-PI2BPSK	M	Outer_Full	8.919	9.480	PASS
N70	15	10	DFT-16QAM	M	Outer_Full	8.908	9.360	PASS
N70	15	10	DFT-64QAM	M	Outer_Full	8.921	9.420	PASS
N70	15	10	DFT-256QAM	M	Outer_Full	8.911	9.400	PASS
N70	15	10	CP-QPSK	M	Outer_Full	9.29	9.740	PASS
N70	15	10	CP-16QAM	M	Outer_Full	9.269	9.720	PASS
N70	15	10	CP-64QAM	M	Outer_Full	9.284	9.760	PASS
N70	15	10	CP-256QAM	M	Outer_Full	9.272	9.800	PASS
N70	15	10	DFT-QPSK	H	Outer_Full	8.925	9.380	PASS
N70	15	10	DFT-PI2BPSK	H	Outer_Full	8.914	9.420	PASS
N70	15	10	DFT-16QAM	H	Outer_Full	8.901	9.340	PASS
N70	15	10	DFT-64QAM	H	Outer_Full	8.901	9.400	PASS
N70	15	10	DFT-256QAM	H	Outer_Full	8.912	9.380	PASS
N70	15	10	CP-QPSK	H	Outer_Full	9.282	9.800	PASS
N70	15	10	CP-16QAM	H	Outer_Full	9.276	9.800	PASS
N70	15	10	CP-64QAM	H	Outer_Full	9.298	9.760	PASS
N70	15	10	CP-256QAM	H	Outer_Full	9.292	9.780	PASS
N70	15	15	DFT-QPSK	L	Outer_Full	13.434	14.070	PASS
N70	15	15	DFT-PI2BPSK	L	Outer_Full	13.432	14.040	PASS
N70	15	15	DFT-16QAM	L	Outer_Full	13.438	14.160	PASS
N70	15	15	DFT-64QAM	L	Outer_Full	13.438	14.130	PASS
N70	15	15	DFT-256QAM	L	Outer_Full	13.425	14.100	PASS
N70	15	15	CP-QPSK	L	Outer_Full	14.096	14.850	PASS
N70	15	15	CP-16QAM	L	Outer_Full	14.163	14.790	PASS
N70	15	15	CP-64QAM	L	Outer_Full	14.134	14.820	PASS
N70	15	15	CP-256QAM	L	Outer_Full	14.124	14.790	PASS
N70	15	15	DFT-QPSK	M	Outer_Full	13.444	14.040	PASS
N70	15	15	DFT-PI2BPSK	M	Outer_Full	13.447	14.160	PASS
N70	15	15	DFT-16QAM	M	Outer_Full	13.408	14.100	PASS
N70	15	15	DFT-64QAM	M	Outer_Full	13.455	14.100	PASS
N70	15	15	DFT-256QAM	M	Outer_Full	13.418	14.100	PASS
N70	15	15	CP-QPSK	M	Outer_Full	14.097	14.850	PASS



Unless otherwise agreed in writing, this document is issued by the Company subject to its General Conditions of Service printed overleaf, available on request or accessible at <http://www.sgs.com/en/Terms-and-Conditions.aspx> and, for electronic format documents, subject to Terms and Conditions for Electronic Documents at <http://www.sgs.com/en/Terms-and-Conditions/Terms-e-Documents.aspx>. Attention is drawn to the limitation of liability, indemnification and jurisdiction issues defined therein. Any holder of this document is advised that information contained hereon reflects the Company's findings at the time of its intervention only and within the limits of Client's instructions, if any. The Company's sole responsibility is to its Client and this document does not exonerate parties to a transaction from exercising all their rights and obligations under the transaction documents. This document cannot be reproduced except in full, without prior written approval of the Company. Any unauthorized alteration, forgery or falsification of the content or appearance of this document is unlawful and offenders may be prosecuted to the fullest extent of the law. Unless otherwise stated the results shown in this test report refer only to the sample(s) tested and such sample(s) are retained for 30 days only.

Attention: to check the authenticity of testing/inspection report & certificate, please contact us at telephone: (86-755) 8307 1443, or email: CN.Doccheck@sgs.com

South of No. 6 Plant, No. 1, Ruisi Road, Suzhou Industrial Park, Suzhou Area, China (Jiangsu) Pilot Free Trade Zone 215000 t (86-512) 62992980 www.sgs.com.cn
 中国·苏州·中国(江苏)自由贸易试验区苏州片区苏州工业园区润胜路1号的6号厂房南楼 邮编: 215000 t (86-512) 62992980 sgs.china@sgs.com



Report No.: SEWA2303000029RG02

Rev.: 01

Page: 15 of 50

N70	15	15	CP-16QAM	M	Outer_Full	14.162	14.760	PASS
N70	15	15	CP-64QAM	M	Outer_Full	14.099	14.790	PASS
N70	15	15	CP-256QAM	M	Outer_Full	14.139	14.730	PASS
N70	15	15	DFT-QPSK	H	Outer_Full	13.44	14.070	PASS
N70	15	15	DFT-PI2BPSK	H	Outer_Full	13.43	14.160	PASS
N70	15	15	DFT-16QAM	H	Outer_Full	13.423	14.130	PASS
N70	15	15	DFT-64QAM	H	Outer_Full	13.418	14.100	PASS
N70	15	15	DFT-256QAM	H	Outer_Full	13.435	14.040	PASS
N70	15	15	CP-QPSK	H	Outer_Full	14.117	15.540	PASS
N70	15	15	CP-16QAM	H	Outer_Full	14.129	14.820	PASS
N70	15	15	CP-64QAM	H	Outer_Full	14.095	14.760	PASS
N70	15	15	CP-256QAM	H	Outer_Full	14.109	14.820	PASS

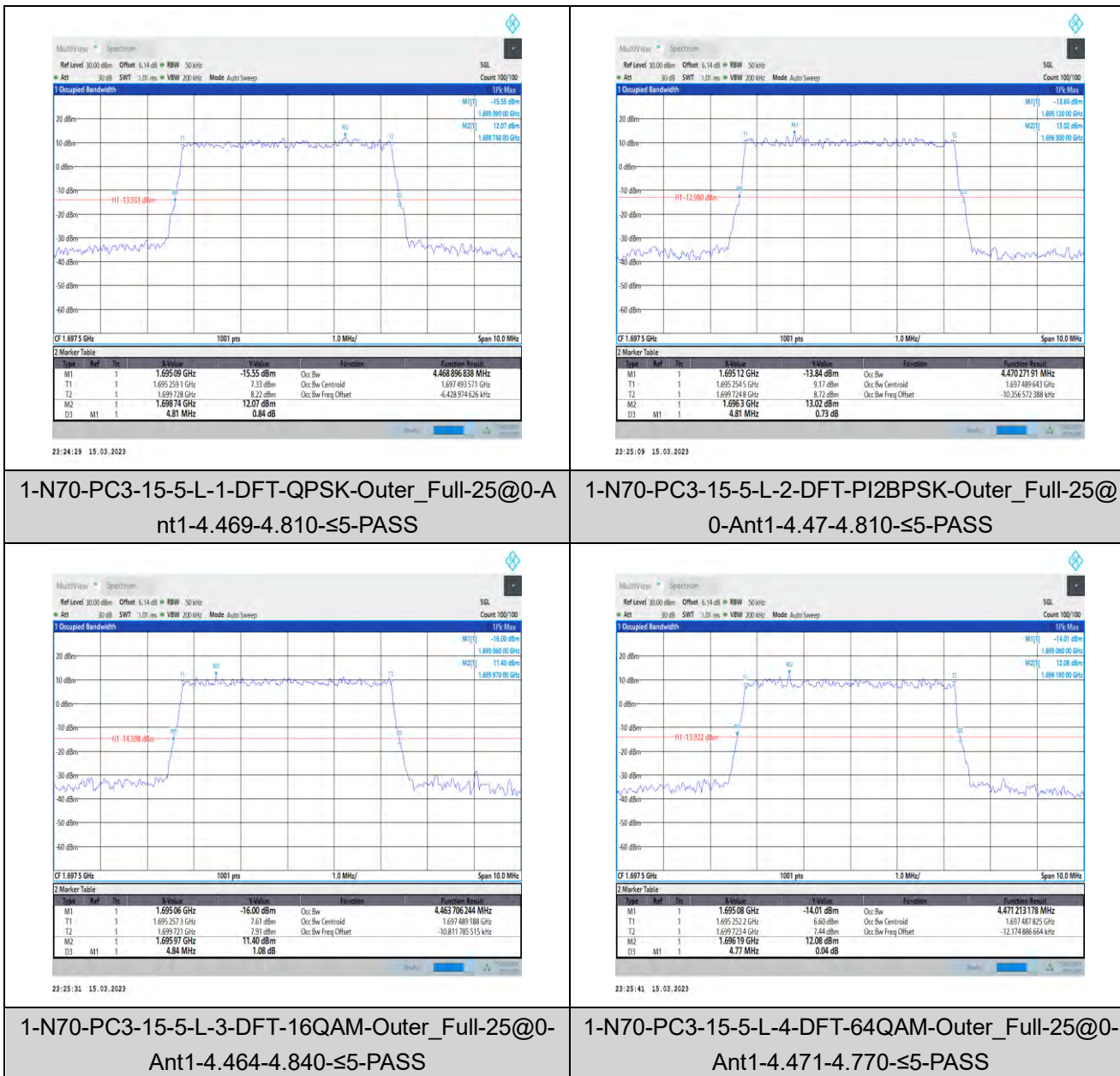


Unless otherwise agreed in writing, this document is issued by the Company subject to its General Conditions of Service printed overleaf, available on request or accessible at <http://www.sgs.com/en/Terms-and-Conditions.aspx> and, for electronic format documents, subject to Terms and Conditions for Electronic Documents at <http://www.sgs.com/en/Terms-and-Conditions/Terms-e-Documents.aspx>. Attention is drawn to the limitation of liability, indemnification and jurisdiction issues defined therein. Any holder of this document is advised that information contained hereon reflects the Company's findings at the time of its intervention only and within the limits of Client's instructions, if any. The Company's sole responsibility is to its Client and this document does not exonerate parties to a transaction from exercising all their rights and obligations under the transaction documents. This document cannot be reproduced except in full, without prior written approval of the Company. Any unauthorized alteration, forgery or falsification of the content or appearance of this document is unlawful and offenders may be prosecuted to the fullest extent of the law. Unless otherwise stated the results shown in this test report refer only to the sample(s) tested and such sample(s) are retained for 30 days only.

Attention: To check the authenticity of testing/inspection report & certificate, please contact us at telephone: (86-755) 8307 1443, or email: CN.Doccheck@sgs.com

South of No. 6 Plant, No. 1, Runsheng Road, Suzhou Industrial Park, Suzhou Area, China (Jiangsu) Pilot Free Trade Zone 215000 t (86-512) 62992980 www.sgs.com.cn
 中国·苏州·中国(江苏)自由贸易试验区苏州片区苏州工业园区润胜路1号的6号厂房南楼 邮编: 215000 t (86-512) 62992980 sgs.china@sgs.com

Test Graphs



Unless otherwise agreed in writing, this document is issued by the Company subject to its General Conditions of Service printed overleaf, available on request or accessible at <http://www.sgs.com/en/Terms-and-Conditions.aspx> and, for electronic format documents, subject to Terms and Conditions for Electronic Documents at <http://www.sgs.com/en/Terms-and-Conditions/Terms-e-Documents.aspx>. Attention is drawn to the limitation of liability, indemnification and jurisdiction issues defined therein. Any holder of this document is advised that information contained hereon reflects the Company's findings at the time of its intervention only and within the limits of Client's instructions, if any. The Company's sole responsibility is to its Client and this document does not exonerate parties to a transaction from exercising all their rights and obligations under the transaction documents. This document cannot be reproduced except in full, without prior written approval of the Company. Any unauthorized alteration, forgery or falsification of the content or appearance of this document is unlawful and offenders may be prosecuted to the fullest extent of the law. Unless otherwise stated the results shown in this test report refer only to the sample(s) tested and such sample(s) are retained for 30 days only.

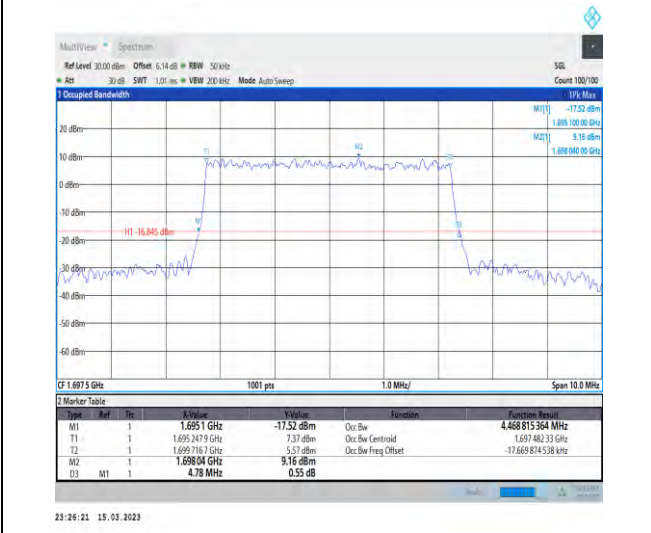
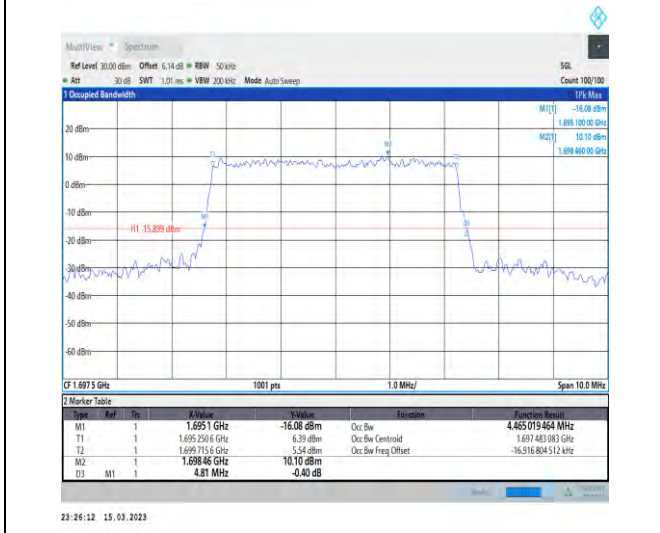
Attention: To check the authenticity of testing/inspection report & certificate, please contact us at telephone: (86-755) 8307 1443, or email: CN.Doccheck@sgs.com

South of No. 6 Plant, No. 1, Runsheng Road, Suzhou Industrial Park, Suzhou Area, China (Jiangsu) Pilot Free Trade Zone 215000 t (86-512) 62992980 www.sgs.com.cn
 中国·苏州·中国(江苏)自由贸易试验区苏州片区苏州工业园区润胜路1号的6号厂房南楼 邮编: 215000 t (86-512) 62992980 sgs.china@sgs.com



1-N70-PC3-15-5-L-5-DFT-256QAM-Outer_Full-25@0-Ant1-4.466-4.830-\leq5-PASS

1-N70-PC3-15-5-L-6-CP-QPSK-Outer_Full-25@0-Ant1-4.467-4.820-\leq5-PASS



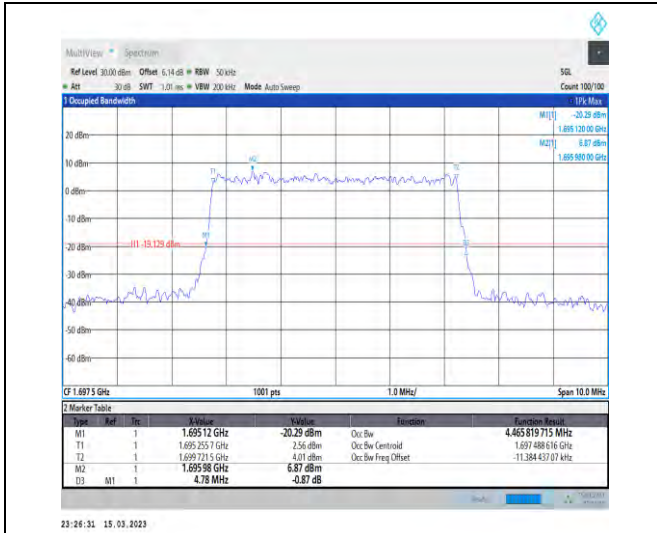
1-N70-PC3-15-5-L-7-CP-16QAM-Outer_Full-25@0-Ant1-4.465-4.810-\leq5-PASS

1-N70-PC3-15-5-L-8-CP-64QAM-Outer_Full-25@0-Ant1-4.469-4.780-\leq5-PASS



Unless otherwise agreed in writing, this document is issued by the Company subject to its General Conditions of Service printed overleaf, available on request or accessible at <http://www.sgs.com/en/Terms-and-Conditions.aspx> and, for electronic format documents, subject to Terms and Conditions for Electronic Documents at <http://www.sgs.com/en/Terms-and-Conditions/Terms-e-Documents.aspx>. Attention is drawn to the limitation of liability, indemnification and jurisdiction issues defined therein. Any holder of this document is advised that information contained hereon reflects the Company's findings at the time of its intervention only and within the limits of Client's instructions, if any. The Company's sole responsibility is to its Client and this document does not exonerate parties to a transaction from exercising all their rights and obligations under the transaction documents. This document cannot be reproduced except in full, without prior written approval of the Company. Any unauthorized alteration, forgery or falsification of the content or appearance of this document is unlawful and offenders may be prosecuted to the fullest extent of the law. Unless otherwise stated the results shown in this test report refer only to the sample(s) tested and such sample(s) are retained for 30 days only.

Attention: To check the authenticity of testing/inspection report & certificate, please contact us at telephone: (86-755) 83071443, or email: CN.Doccheck@sgs.com
 South of No. 6 Plant, No. 1, Runsheng Road, Suzhou Industrial Park, Suzhou Area, China (Jiangsu) Pilot Free Trade Zone 215000 t (86-512) 62992980 www.sgs.com.cn
 中国·苏州·中国(江苏)自由贸易试验区苏州片区苏州工业园区润胜路1号的6号厂房南楼 邮编: 215000 t (86-512) 62992980 sgs.china@sgs.com



1-N70-PC3-15-5-L-9-CP-256QAM-Outer_Full-25@0-Ant1-4.466-4.780-≤5-PASS



1-N70-PC3-15-5-M-1-DFT-QPSK-Outer_Full-25@0-Ant1-4.454-4.820-≤5-PASS



1-N70-PC3-15-5-M-2-DFT-PI2BPSK-Outer_Full-25@0-Ant1-4.477-4.830-≤5-PASS

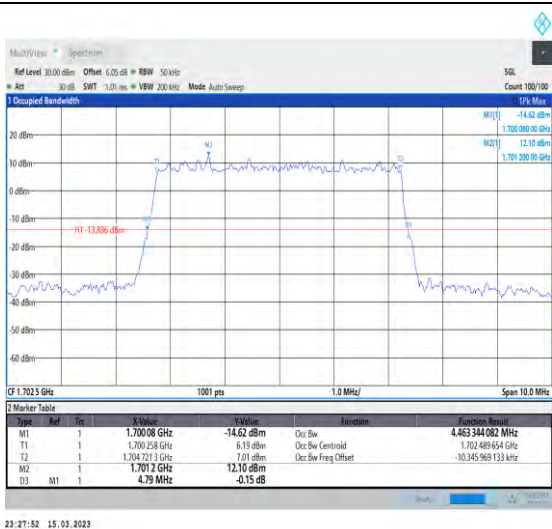


1-N70-PC3-15-5-M-3-DFT-16QAM-Outer_Full-25@0-Ant1-4.463-4.810-≤5-PASS



Unless otherwise agreed in writing, this document is issued by the Company subject to its General Conditions of Service printed overleaf, available on request or accessible at <http://www.sgs.com/en/Terms-and-Conditions.aspx> and, for electronic format documents, subject to Terms and Conditions for Electronic Documents at <http://www.sgs.com/en/Terms-and-Conditions/Terms-e-Documents.aspx>. Attention is drawn to the limitation of liability, indemnification and jurisdiction issues defined therein. Any holder of this document is advised that information contained hereon reflects the Company's findings at the time of its intervention only and within the limits of Client's instructions, if any. The Company's sole responsibility is to its Client and this document does not exonerate parties to a transaction from exercising all their rights and obligations under the transaction documents. This document cannot be reproduced except in full, without prior written approval of the Company. Any unauthorized alteration, forgery or falsification of the content or appearance of this document is unlawful and offenders may be prosecuted to the fullest extent of the law. Unless otherwise stated the results shown in this test report refer only to the sample(s) tested and such sample(s) are retained for 30 days only.

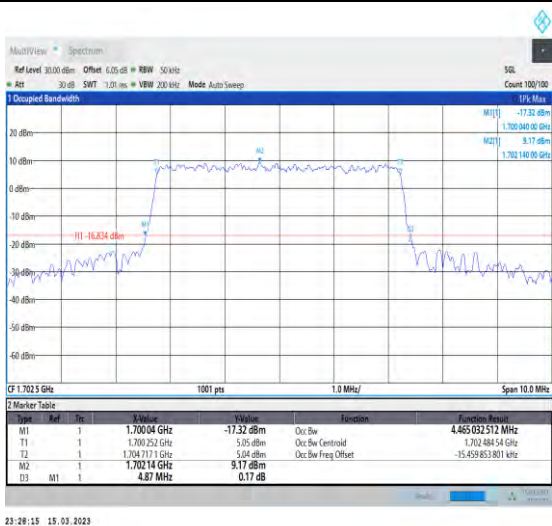
Attention: To check the authenticity of testing/inspection report & certificate, please contact us at telephone: (86-755) 8307 1443, or email: CN.Doccheck@sgs.com
 South of No. 6 Plant, No. 1, Runsheng Road, Suzhou Industrial Park, Suzhou Area, China (Jiangsu) Pilot Free Trade Zone 215000 t (86-512) 62992980 www.sgs.com.cn
 中国·苏州·中国(江苏)自由贸易试验区苏州片区苏州工业园区润胜路1号的6号厂房南楼 邮编: 215000 t (86-512) 62992980 sgs.china@sgs.com



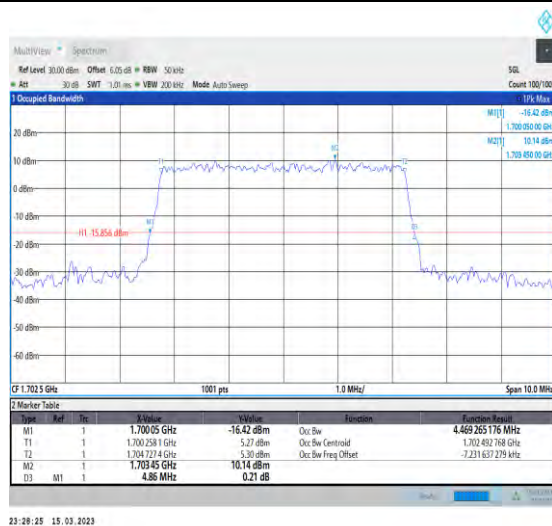
1-N70-PC3-15-5-M-4-DFT-64QAM-Outer_Full-25@0-Ant1-4.463-4.790-≤5-PASS



1-N70-PC3-15-5-M-5-DFT-256QAM-Outer_Full-25@0-Ant1-4.454-4.800-≤5-PASS



1-N70-PC3-15-5-M-6-CP-QPSK-Outer_Full-25@0-Ant1-4.465-4.870-≤5-PASS



1-N70-PC3-15-5-M-7-CP-16QAM-Outer_Full-25@0-Ant1-4.469-4.860-≤5-PASS



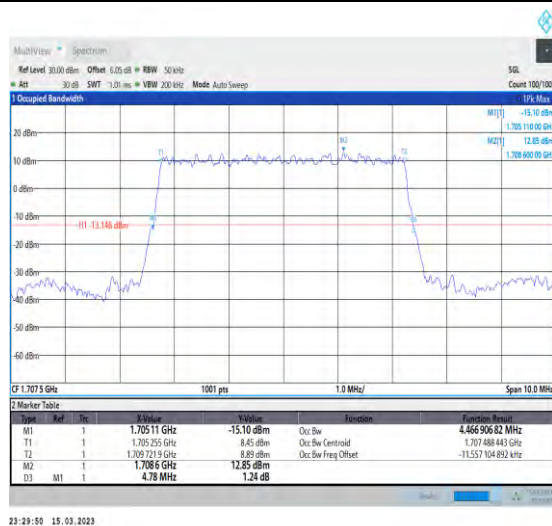
Unless otherwise agreed in writing, this document is issued by the Company subject to its General Conditions of Service printed overleaf, available on request or accessible at <http://www.sgs.com/en/Terms-and-Conditions.aspx> and, for electronic format documents, subject to Terms and Conditions for Electronic Documents at <http://www.sgs.com/en/Terms-and-Conditions/Terms-e-Documents.aspx>. Attention is drawn to the limitation of liability, indemnification and jurisdiction issues defined therein. Any holder of this document is advised that information contained hereon reflects the Company's findings at the time of its intervention only and within the limits of Client's instructions, if any. The Company's sole responsibility is to its Client and this document does not exonerate parties to a transaction from exercising all their rights and obligations under the transaction documents. This document cannot be reproduced except in full, without prior written approval of the Company. Any unauthorized alteration, forgery or falsification of the content or appearance of this document is unlawful and offenders may be prosecuted to the fullest extent of the law. Unless otherwise stated the results shown in this test report refer only to the sample(s) tested and such sample(s) are retained for 30 days only.

Attention: To check the authenticity of testing/inspection report & certificate, please contact us at telephone: (86-755) 83071443, or email: CN.Doccheck@sgs.com
 South of No. 6 Plant, No. 1, Runsheng Road, Suzhou Industrial Park, Suzhou Area, China (Jiangsu) Pilot Free Trade Zone 215000 t (86-512) 62992980 www.sgs.com.cn
 中国·苏州·中国(江苏)自由贸易试验区苏州片区苏州工业园区润胜路1号的6号厂房南楼 邮编: 215000 t (86-512) 62992980 sgs.china@sgs.com



1-N70-PC3-15-5-M-8-CP-64QAM-Outer_Full-25@0-Ant1-4.466-4.830-≤5-PASS

1-N70-PC3-15-5-M-9-CP-256QAM-Outer_Full-25@0-Ant1-4.471-4.820-≤5-PASS



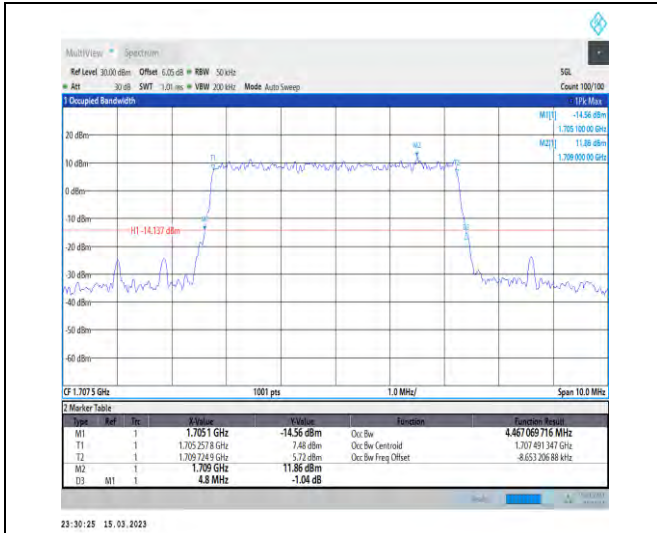
1-N70-PC3-15-5-H-1-DFT-QPSK-Outer_Full-25@0-Ant1-4.466-4.790-≤5-PASS

1-N70-PC3-15-5-H-2-DFT-PI2BPSK-Outer_Full-25@0-Ant1-4.467-4.780-≤5-PASS

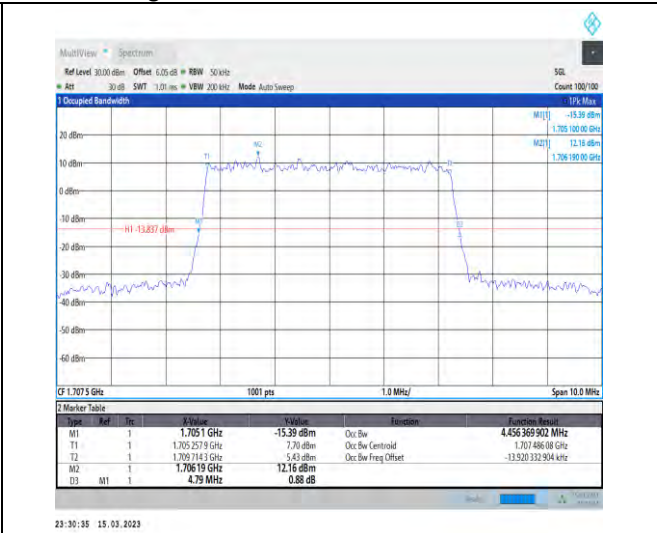


Unless otherwise agreed in writing, this document is issued by the Company subject to its General Conditions of Service printed overleaf, available on request or accessible at <http://www.sgs.com/en/Terms-and-Conditions.aspx> and, for electronic format documents, subject to Terms and Conditions for Electronic Documents at <http://www.sgs.com/en/Terms-and-Conditions/Terms-e-Documents.aspx>. Attention is drawn to the limitation of liability, indemnification and jurisdiction issues defined therein. Any holder of this document is advised that information contained hereon reflects the Company's findings at the time of its intervention only and within the limits of Client's instructions, if any. The Company's sole responsibility is to its Client and this document does not exonerate parties to a transaction from exercising all their rights and obligations under the transaction documents. This document cannot be reproduced except in full, without prior written approval of the Company. Any unauthorized alteration, forgery or falsification of the content or appearance of this document is unlawful and offenders may be prosecuted to the fullest extent of the law. Unless otherwise stated the results shown in this test report refer only to the sample(s) tested and such sample(s) are retained for 30 days only.

Attention: To check the authenticity of testing/inspection report & certificate, please contact us at telephone: (86-755) 83071443, or email: CN.Doccheck@sgs.com
 South of No. 6 Plant, No. 1, Runsheng Road, Suzhou Industrial Park, Suzhou Area, China (Jiangsu) Pilot Free Trade Zone 215000 t (86-512) 62992980 www.sgs.com.cn
 中国·苏州·中国(江苏)自由贸易试验区苏州片区苏州工业园区润胜路1号的6号厂房南楼 邮编: 215000 t (86-512) 62992980 sgs.china@sgs.com



1-N70-PC3-15-5-H-3-DFT-16QAM-Outer_Full-25@0-Ant1-4.467-4.800-≤5-PASS



1-N70-PC3-15-5-H-4-DFT-64QAM-Outer_Full-25@0-Ant1-4.456-4.790-≤5-PASS



1-N70-PC3-15-5-H-5-DFT-256QAM-Outer_Full-25@0-Ant1-4.462-4.750-≤5-PASS



1-N70-PC3-15-5-H-6-CP-QPSK-Outer_Full-25@0-Ant1-4.463-4.830-≤5-PASS



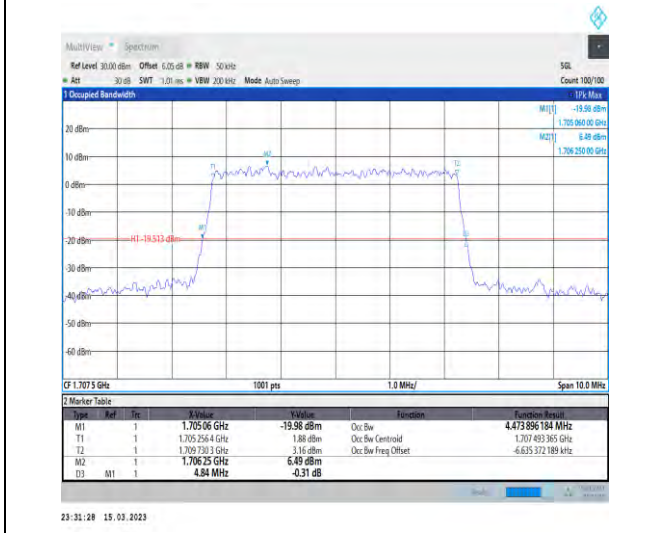
Unless otherwise agreed in writing, this document is issued by the Company subject to its General Conditions of Service printed overleaf, available on request or accessible at <http://www.sgs.com/en/Terms-and-Conditions.aspx> and, for electronic format documents, subject to Terms and Conditions for Electronic Documents at <http://www.sgs.com/en/Terms-and-Conditions/Terms-e-Documents.aspx>. Attention is drawn to the limitation of liability, indemnification and jurisdiction issues defined therein. Any holder of this document is advised that information contained hereon reflects the Company's findings at the time of its intervention only and within the limits of Client's instructions, if any. The Company's sole responsibility is to its Client and this document does not exonerate parties to a transaction from exercising all their rights and obligations under the transaction documents. This document cannot be reproduced except in full, without prior written approval of the Company. Any unauthorized alteration, forgery or falsification of the content or appearance of this document is unlawful and offenders may be prosecuted to the fullest extent of the law. Unless otherwise stated the results shown in this test report refer only to the sample(s) tested and such sample(s) are retained for 30 days only.

Attention: To check the authenticity of testing/inspection report & certificate, please contact us at telephone: (86-755) 83071443, or email: CN.Doccheck@sgs.com
 South of No. 6 Plant, No. 1, Runsheng Road, Suzhou Industrial Park, Suzhou Area, China (Jiangsu) Pilot Free Trade Zone 215000 t (86-512) 62992980 www.sgs.com.cn
 中国·苏州·中国(江苏)自由贸易试验区苏州片区苏州工业园区润胜路1号的6号厂房南楼 邮编: 215000 t (86-512) 62992980 sgs.china@sgs.com



1-N70-PC3-15-5-H-7-CP-16QAM-Outer_Full-25@0-Ant1-4.47-4.850-≤5-PASS

1-N70-PC3-15-5-H-8-CP-64QAM-Outer_Full-25@0-Ant1-4.476-4.790-≤5-PASS



1-N70-PC3-15-5-H-9-CP-256QAM-Outer_Full-25@0-Ant1-4.474-4.840-≤5-PASS

1-N70-PC3-15-10-L-1-DFT-QPSK-Outer_Full-50@0-Ant1-8.903-9.420-≤10-PASS



Unless otherwise agreed in writing, this document is issued by the Company subject to its General Conditions of Service printed overleaf, available on request or accessible at <http://www.sgs.com/en/Terms-and-Conditions.aspx> and, for electronic format documents, subject to Terms and Conditions for Electronic Documents at <http://www.sgs.com/en/Terms-and-Conditions/Terms-e-Documents.aspx>. Attention is drawn to the limitation of liability, indemnification and jurisdiction issues defined therein. Any holder of this document is advised that information contained hereon reflects the Company's findings at the time of its intervention only and within the limits of Client's instructions, if any. The Company's sole responsibility is to its Client and this document does not exonerate parties to a transaction from exercising all their rights and obligations under the transaction documents. This document cannot be reproduced except in full, without prior written approval of the Company. Any unauthorized alteration, forgery or falsification of the content or appearance of this document is unlawful and offenders may be prosecuted to the fullest extent of the law. Unless otherwise stated the results shown in this test report refer only to the sample(s) tested and such sample(s) are retained for 30 days only.

Attention: To check the authenticity of testing/inspection report & certificate, please contact us at telephone: (86-755) 8307 1443, or email: CN.Doccheck@sgs.com
 South of No. 6 Plant, No. 1, Runsheng Road, Suzhou Industrial Park, Suzhou Area, China (Jiangsu) Pilot Free Trade Zone 215000 t (86-512) 62992980 www.sgs.com.cn
 中国·苏州·中国(江苏)自由贸易试验区苏州片区苏州工业园区润胜路1号的6号厂房南楼 邮编: 215000 t (86-512) 62992980 sgs.china@sgs.com



1-N70-PC3-15-10-L-2-DFT-PI2BPSK-Outer_Full-50 @0-Ant1-8.909-9.420-≤10-PASS

1-N70-PC3-15-10-L-3-DFT-16QAM-Outer_Full-50 @0-Ant1-8.907-9.380-≤10-PASS



1-N70-PC3-15-10-L-4-DFT-64QAM-Outer_Full-50 @0-Ant1-8.911-9.400-≤10-PASS

1-N70-PC3-15-10-L-5-DFT-256QAM-Outer_Full-50 @0-Ant1-8.909-9.360-≤10-PASS

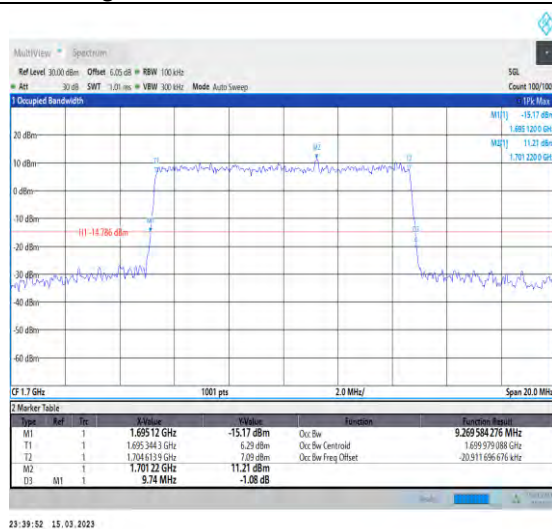


Unless otherwise agreed in writing, this document is issued by the Company subject to its General Conditions of Service printed overleaf, available on request or accessible at <http://www.sgs.com/en/Terms-and-Conditions.aspx> and, for electronic format documents, subject to Terms and Conditions for Electronic Documents at <http://www.sgs.com/en/Terms-and-Conditions/Terms-e-Documents.aspx>. Attention is drawn to the limitation of liability, indemnification and jurisdiction issues defined therein. Any holder of this document is advised that information contained hereon reflects the Company's findings at the time of its intervention only and within the limits of Client's instructions, if any. The Company's sole responsibility is to its Client and this document does not exonerate parties to a transaction from exercising all their rights and obligations under the transaction documents. This document cannot be reproduced except in full, without prior written approval of the Company. Any unauthorized alteration, forgery or falsification of the content or appearance of this document is unlawful and offenders may be prosecuted to the fullest extent of the law. Unless otherwise stated the results shown in this test report refer only to the sample(s) tested and such sample(s) are retained for 30 days only.

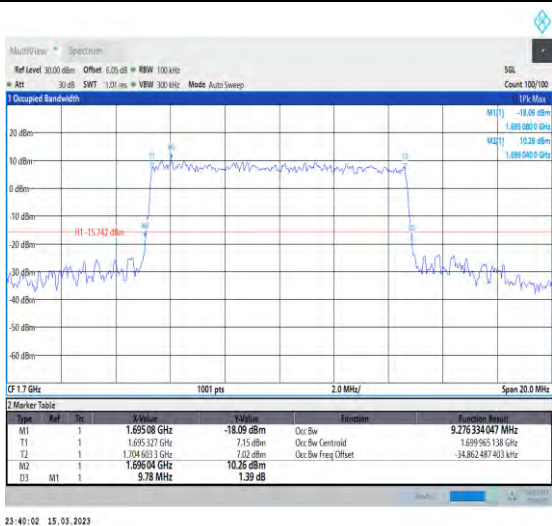
Attention: To check the authenticity of testing/inspection report & certificate, please contact us at telephone: (86-755) 83071443, or email: CN.Doccheck@sgs.com
 South of No. 6 Plant, No. 1, Runsheng Road, Suzhou Industrial Park, Suzhou Area, China (Jiangsu) Pilot Free Trade Zone 215000 t (86-512) 62992980 www.sgs.com.cn
 中国·苏州·中国(江苏)自由贸易试验区苏州片区苏州工业园区润胜路1号的6号厂房南楼 邮编: 215000 t (86-512) 62992980 sgs.china@sgs.com



1-N70-PC3-15-10-L-6-CP-QPSK-Outer_Full-52@0-A
 Ant1-9.274-9.800-≤10-PASS



1-N70-PC3-15-10-L-7-CP-16QAM-Outer_Full-52@0-
 Ant1-9.27-9.740-≤10-PASS



1-N70-PC3-15-10-L-8-CP-64QAM-Outer_Full-52@0-
 Ant1-9.276-9.780-≤10-PASS

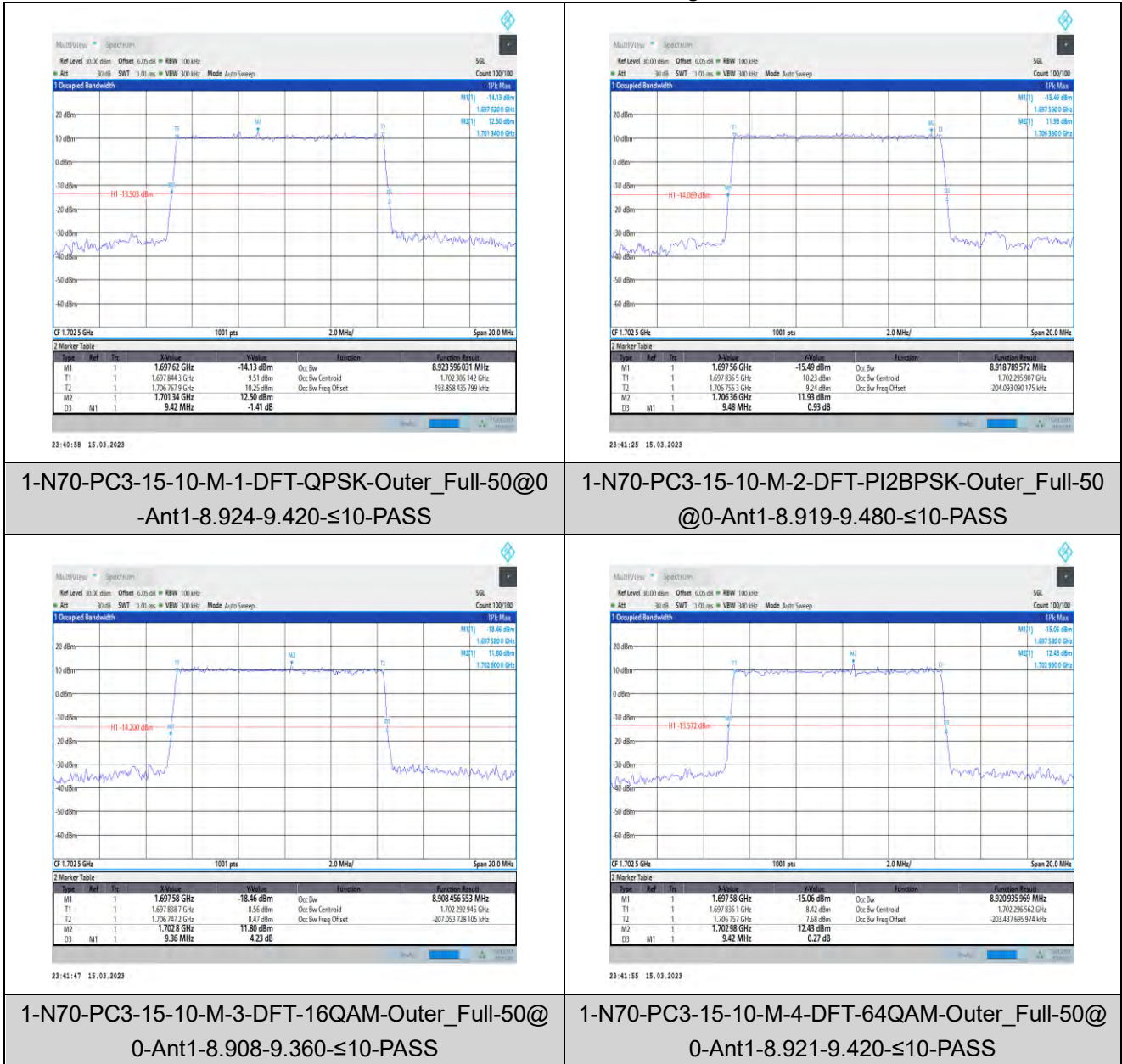


1-N70-PC3-15-10-L-9-CP-256QAM-Outer_Full-52@0-
 Ant1-9.289-9.800-≤10-PASS



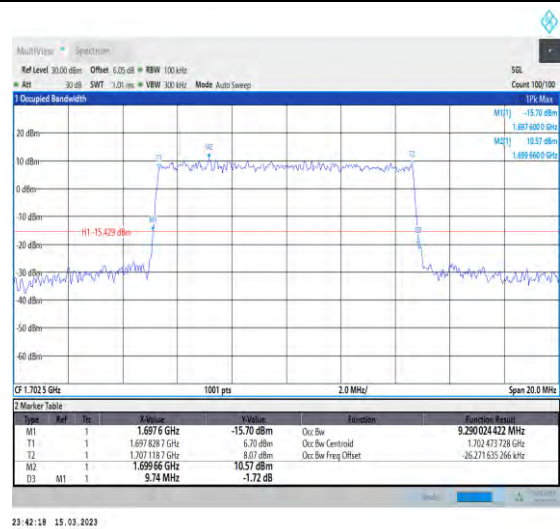
Unless otherwise agreed in writing, this document is issued by the Company subject to its General Conditions of Service printed overleaf, available on request or accessible at <http://www.sgs.com/en/Terms-and-Conditions.aspx> and, for electronic format documents, subject to Terms and Conditions for Electronic Documents at <http://www.sgs.com/en/Terms-and-Conditions/Terms-e-Documents.aspx>. Attention is drawn to the limitation of liability, indemnification and jurisdiction issues defined therein. Any holder of this document is advised that information contained hereon reflects the Company's findings at the time of its intervention only and within the limits of Client's instructions, if any. The Company's sole responsibility is to its Client and this document does not exonerate parties to a transaction from exercising all their rights and obligations under the transaction documents. This document cannot be reproduced except in full, without prior written approval of the Company. Any unauthorized alteration, forgery or falsification of the content or appearance of this document is unlawful and offenders may be prosecuted to the fullest extent of the law. Unless otherwise stated the results shown in this test report refer only to the sample(s) tested and such sample(s) are retained for 30 days only.

Attention: To check the authenticity of testing/inspection report & certificate, please contact us at telephone: (86-755) 83071443, or email: CN.Doccheck@sgs.com
 South of No. 6 Plant, No. 1, Runsheng Road, Suzhou Industrial Park, Suzhou Area, China (Jiangsu) Pilot Free Trade Zone 215000 t (86-512) 62992980 www.sgs.com.cn
 中国·苏州·中国(江苏)自由贸易试验区苏州片区苏州工业园区润胜路1号的6号厂房南楼 邮编: 215000 t (86-512) 62992980 sgs.china@sgs.com



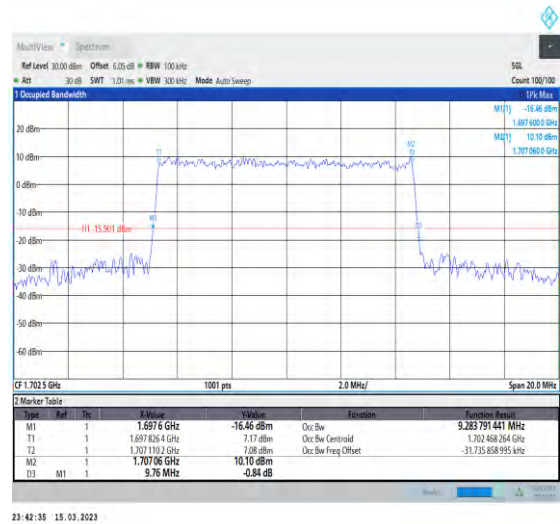
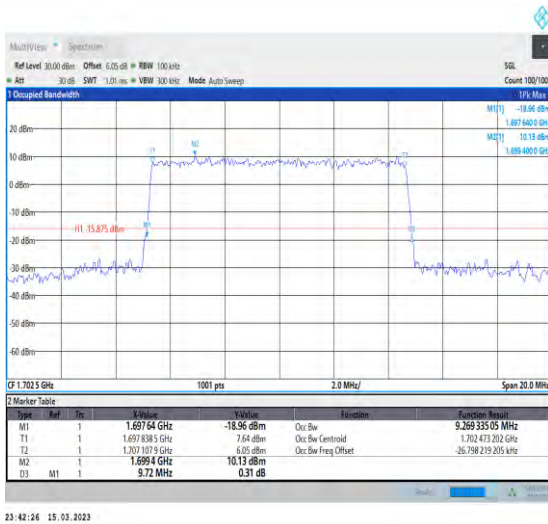
Unless otherwise agreed in writing, this document is issued by the Company subject to its General Conditions of Service printed overleaf, available on request or accessible at <http://www.sgs.com/en/Terms-and-Conditions.aspx> and, for electronic format documents, subject to Terms and Conditions for Electronic Documents at <http://www.sgs.com/en/Terms-and-Conditions/Terms-e-Documents.aspx>. Attention is drawn to the limitation of liability, indemnification and jurisdiction issues defined therein. Any holder of this document is advised that information contained hereon reflects the Company's findings at the time of its intervention only and within the limits of Client's instructions, if any. The Company's sole responsibility is to its Client and this document does not exonerate parties to a transaction from exercising all their rights and obligations under the transaction documents. This document cannot be reproduced except in full, without prior written approval of the Company. Any unauthorized alteration, forgery or falsification of the content or appearance of this document is unlawful and offenders may be prosecuted to the fullest extent of the law. Unless otherwise stated the results shown in this test report refer only to the sample(s) tested and such sample(s) are retained for 30 days only.

Attention: To check the authenticity of testing/inspection report & certificate, please contact us at telephone: (86-755) 8307 1443, or email: CN.Doccheck@sgs.com
 South of No. 6 Plant, No. 1, Runsheng Road, Suzhou Industrial Park, Suzhou Area, China (Jiangsu) Pk01 Free Trade Zone 215000 t (86-512) 62992980 www.sgsgroup.com.cn
 中国·苏州·中国(江苏)自由贸易试验区苏州片区苏州工业园区润胜路1号的6号厂房南楼 邮编: 215000 t (86-512) 62992980 sgs.china@sgs.com



1-N70-PC3-15-10-M-5-DFT-256QAM-Outer_Full-50@0-Ant1-8.911-9.400-≤10-PASS

1-N70-PC3-15-10-M-6-CP-QPSK-Outer_Full-52@0-Ant1-9.29-9.740-≤10-PASS



1-N70-PC3-15-10-M-7-CP-16QAM-Outer_Full-52@0-Ant1-9.269-9.720-≤10-PASS

1-N70-PC3-15-10-M-8-CP-64QAM-Outer_Full-52@0-Ant1-9.284-9.760-≤10-PASS

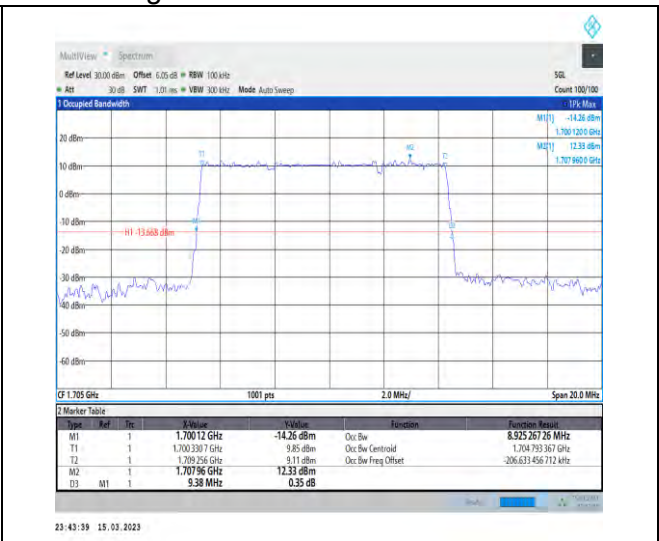


Unless otherwise agreed in writing, this document is issued by the Company subject to its General Conditions of Service printed overleaf, available on request or accessible at <http://www.sgs.com/en/Terms-and-Conditions.aspx> and, for electronic format documents, subject to Terms and Conditions for Electronic Documents at <http://www.sgs.com/en/Terms-and-Conditions/Terms-e-Documents.aspx>. Attention is drawn to the limitation of liability, indemnification and jurisdiction issues defined therein. Any holder of this document is advised that information contained hereon reflects the Company's findings at the time of its intervention only and within the limits of Client's instructions, if any. The Company's sole responsibility is to its Client and this document does not exonerate parties to a transaction from exercising all their rights and obligations under the transaction documents. This document cannot be reproduced except in full, without prior written approval of the Company. Any unauthorized alteration, forgery or falsification of the content or appearance of this document is unlawful and offenders may be prosecuted to the fullest extent of the law. Unless otherwise stated the results shown in this test report refer only to the sample(s) tested and such sample(s) are retained for 30 days only.

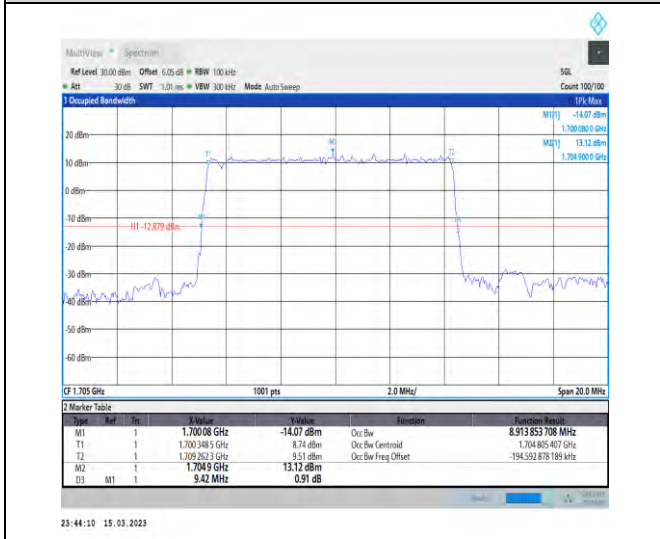
Attention: To check the authenticity of testing/inspection report & certificate, please contact us at telephone: (86-755) 83071443, or email: CN.Doccheck@sgs.com
 South of No. 6 Plant, No. 1, Runsheng Road, Suzhou Industrial Park, Suzhou Area, China (Jiangsu) Pilot Free Trade Zone 215000 t (86-512) 62992980 www.sgs.com.cn
 中国·苏州·中国(江苏)自由贸易试验区苏州片区苏州工业园区润胜路1号的6号厂房南楼 邮编: 215000 t (86-512) 62992980 sgs.china@sgs.com



1-N70-PC3-15-10-M-9-CP-256QAM-Outer_Full-52@
 0-Ant1-9.272-9.800-≤10-PASS



1-N70-PC3-15-10-H-1-DFT-QPSK-Outer_Full-50@
 0-Ant1-8.925-9.380-≤10-PASS



1-N70-PC3-15-10-H-2-DFT-PI2BPSK-Outer_Full-50
 @0-Ant1-8.914-9.420-≤10-PASS



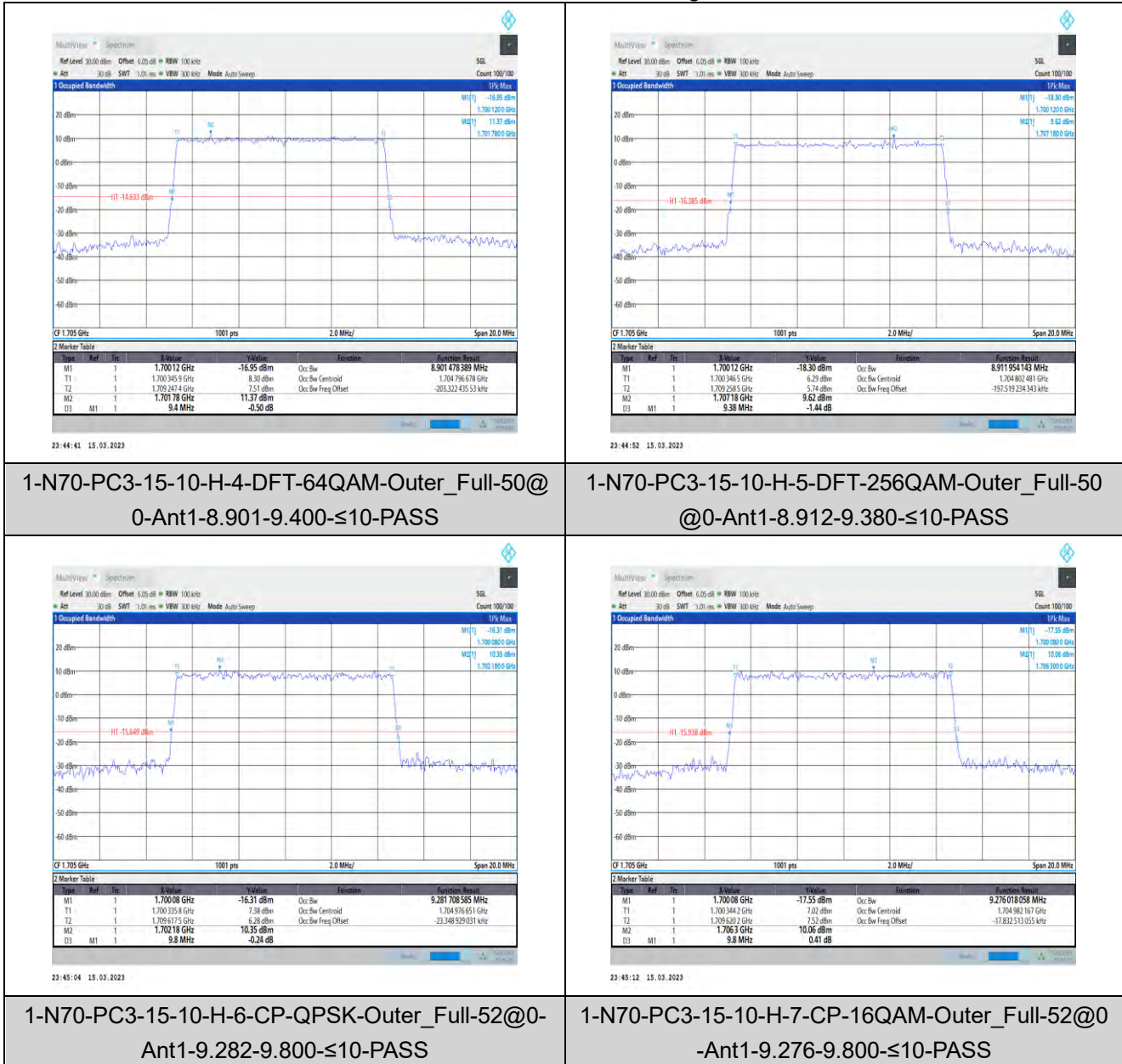
1-N70-PC3-15-10-H-3-DFT-16QAM-Outer_Full-50@
 0-Ant1-8.901-9.340-≤10-PASS



Unless otherwise agreed in writing, this document is issued by the Company subject to its General Conditions of Service printed overleaf, available on request or accessible at <http://www.sgs.com/en/Terms-and-Conditions.aspx> and, for electronic format documents, subject to Terms and Conditions for Electronic Documents at <http://www.sgs.com/en/Terms-and-Conditions/Terms-e-Documents.aspx>. Attention is drawn to the limitation of liability, indemnification and jurisdiction issues defined therein. Any holder of this document is advised that information contained hereon reflects the Company's findings at the time of its intervention only and within the limits of Client's instructions, if any. The Company's sole responsibility is to its Client and this document does not exonerate parties to a transaction from exercising all their rights and obligations under the transaction documents. This document cannot be reproduced except in full, without prior written approval of the Company. Any unauthorized alteration, forgery or falsification of the content or appearance of this document is unlawful and offenders may be prosecuted to the fullest extent of the law. Unless otherwise stated the results shown in this test report refer only to the sample(s) tested and such sample(s) are retained for 30 days only.

Attention: To check the authenticity of testing/inspection report & certificate, please contact us at telephone: (86-755) 8307 1443, or email: CN.Doccheck@sgs.com

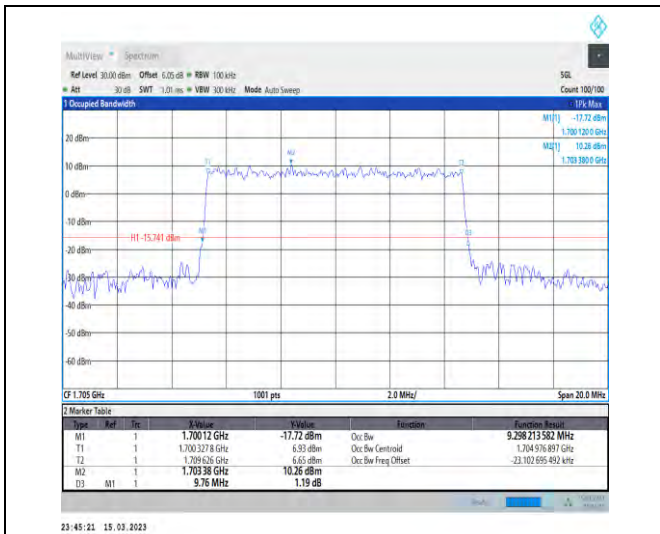
South of No. 6 Plant, No. 1, Runsheng Road, Suzhou Industrial Park, Suzhou Area, China (Jiangsu) Pilot Free Trade Zone 215000 t (86-512) 62992980 www.sgs.com.cn
 中国·苏州·中国(江苏)自由贸易试验区苏州片区苏州工业园区润胜路1号的6号厂房南楼 邮编: 215000 t (86-512) 62992980 sgs.china@sgs.com



Unless otherwise agreed in writing, this document is issued by the Company subject to its General Conditions of Service printed overleaf, available on request or accessible at <http://www.sgs.com/en/Terms-and-Conditions.aspx> and, for electronic format documents, subject to Terms and Conditions for Electronic Documents at <http://www.sgs.com/en/Terms-and-Conditions/Terms-e-Documents.aspx>. Attention is drawn to the limitation of liability, indemnification and jurisdiction issues defined therein. Any holder of this document is advised that information contained hereon reflects the Company's findings at the time of its intervention only and within the limits of Client's instructions, if any. The Company's sole responsibility is to its Client and this document does not exonerate parties to a transaction from exercising all their rights and obligations under the transaction documents. This document cannot be reproduced except in full, without prior written approval of the Company. Any unauthorized alteration, forgery or falsification of the content or appearance of this document is unlawful and offenders may be prosecuted to the fullest extent of the law. Unless otherwise stated the results shown in this test report refer only to the sample(s) tested and such sample(s) are retained for 30 days only.

Attention: To check the authenticity of testing/inspection report & certificate, please contact us at telephone: (86-755) 83071443, or email: CN.Doccheck@sgs.com

South of No. 6 Plant, No. 1, Runsheng Road, Suzhou Industrial Park, Suzhou Area, China (Jiangsu) Pilot Free Trade Zone 215000 t (86-512) 62992980 www.sgs.com.cn
 中国·苏州·中国(江苏)自由贸易试验区苏州片区苏州工业园区润胜路1号的6号厂房南楼 邮编: 215000 t (86-512) 62992980 sgs.china@sgs.com



1-N70-PC3-15-10-H-8-CP-64QAM-Outer_Full-52@0-Ant1-9.298-9.760-≤10-PASS

1-N70-PC3-15-10-H-9-CP-256QAM-Outer_Full-52@0-Ant1-9.292-9.780-≤10-PASS



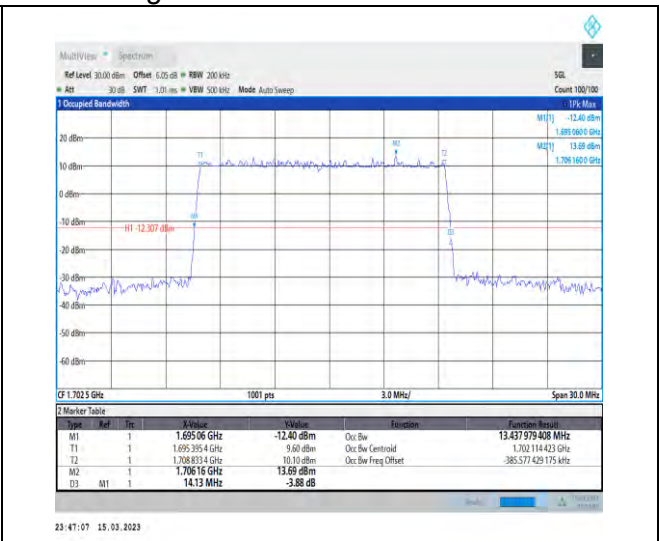
1-N70-PC3-15-15-L-1-DFT-QPSK-Outer_Full-75@0-Ant1-13.434-14.070-≤15-PASS

1-N70-PC3-15-15-L-2-DFT-PI2BPSK-Outer_Full-75@0-Ant1-13.432-14.040-≤15-PASS



Unless otherwise agreed in writing, this document is issued by the Company subject to its General Conditions of Service printed overleaf, available on request or accessible at <http://www.sgs.com/en/Terms-and-Conditions.aspx> and, for electronic format documents, subject to Terms and Conditions for Electronic Documents at <http://www.sgs.com/en/Terms-and-Conditions/Terms-e-Documents.aspx>. Attention is drawn to the limitation of liability, indemnification and jurisdiction issues defined therein. Any holder of this document is advised that information contained hereon reflects the Company's findings at the time of its intervention only and within the limits of Client's instructions, if any. The Company's sole responsibility is to its Client and this document does not exonerate parties to a transaction from exercising all their rights and obligations under the transaction documents. This document cannot be reproduced except in full, without prior written approval of the Company. Any unauthorized alteration, forgery or falsification of the content or appearance of this document is unlawful and offenders may be prosecuted to the fullest extent of the law. Unless otherwise stated the results shown in this test report refer only to the sample(s) tested and such sample(s) are retained for 30 days only.

Attention: To check the authenticity of testing/inspection report & certificate, please contact us at telephone: (86-755) 8307 1443, or email: CN.Doccheck@sgs.com
 South of No. 6 Plant, No. 1, Runsheng Road, Suzhou Industrial Park, Suzhou Area, China (Jiangsu) Pilot Free Trade Zone 215000 t (86-512) 62992980 www.sgs.com.cn
 中国·苏州·中国(江苏)自由贸易试验区苏州片区苏州工业园区润胜路1号的6号厂房南楼 邮编: 215000 t (86-512) 62992980 sgs.china@sgs.com



1-N70-PC3-15-15-L-3-DFT-16QAM-Outer_Full-75@0-Ant1-13.438-14.160-≤15-PASS

1-N70-PC3-15-15-L-4-DFT-64QAM-Outer_Full-75@0-Ant1-13.438-14.130-≤15-PASS



1-N70-PC3-15-15-L-5-DFT-256QAM-Outer_Full-75@0-Ant1-13.425-14.100-≤15-PASS

1-N70-PC3-15-15-L-6-CP-QPSK-Outer_Full-79@0-Ant1-14.096-14.850-≤15-PASS

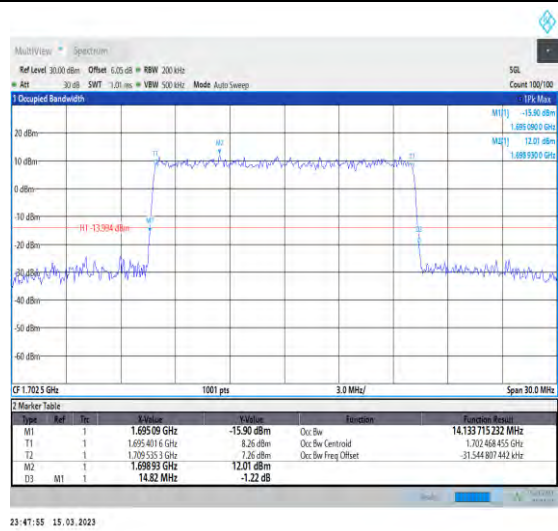


Unless otherwise agreed in writing, this document is issued by the Company subject to its General Conditions of Service printed overleaf, available on request or accessible at <http://www.sgs.com/en/Terms-and-Conditions.aspx> and, for electronic format documents, subject to Terms and Conditions for Electronic Documents at <http://www.sgs.com/en/Terms-and-Conditions/Terms-e-Documents.aspx>. Attention is drawn to the limitation of liability, indemnification and jurisdiction issues defined therein. Any holder of this document is advised that information contained hereon reflects the Company's findings at the time of its intervention only and within the limits of Client's instructions, if any. The Company's sole responsibility is to its Client and this document does not exonerate parties to a transaction from exercising all their rights and obligations under the transaction documents. This document cannot be reproduced except in full, without prior written approval of the Company. Any unauthorized alteration, forgery or falsification of the content or appearance of this document is unlawful and offenders may be prosecuted to the fullest extent of the law. Unless otherwise stated the results shown in this test report refer only to the sample(s) tested and such sample(s) are retained for 30 days only.

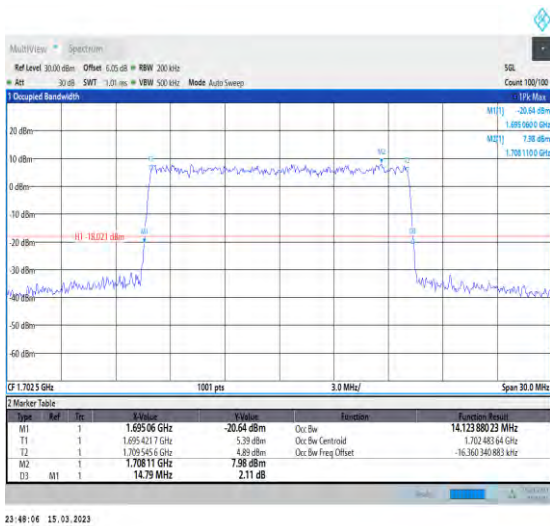
Attention: To check the authenticity of testing/inspection report & certificate, please contact us at telephone: (86-755) 8307 1443, or email: CN.Doccheck@sgs.com
 South of No. 6 Plant, No. 1, Runsheng Road, Suzhou Industrial Park, Suzhou Area, China (Jiangsu) Pilot Free Trade Zone 215000 t (86-512) 62992980 www.sgs.com.cn
 中国·苏州·中国(江苏)自由贸易试验区苏州片区苏州工业园区润胜路1号的6号厂房南楼 邮编: 215000 t (86-512) 62992980 sgs.china@sgs.com



1-N70-PC3-15-15-L-7-CP-16QAM-Outer_Full-79@0-Ant1-14.163-14.790-≤15-PASS



1-N70-PC3-15-15-L-8-CP-64QAM-Outer_Full-79@0-Ant1-14.134-14.820-≤15-PASS



1-N70-PC3-15-15-L-9-CP-256QAM-Outer_Full-79@0-Ant1-14.124-14.790-≤15-PASS



1-N70-PC3-15-15-M-1-DFT-QPSK-Outer_Full-75@0-Ant1-13.444-14.040-≤15-PASS



Unless otherwise agreed in writing, this document is issued by the Company subject to its General Conditions of Service printed overleaf, available on request or accessible at <http://www.sgs.com/en/Terms-and-Conditions.aspx> and, for electronic format documents, subject to Terms and Conditions for Electronic Documents at <http://www.sgs.com/en/Terms-and-Conditions/Terms-e-Documents.aspx>. Attention is drawn to the limitation of liability, indemnification and jurisdiction issues defined therein. Any holder of this document is advised that information contained hereon reflects the Company's findings at the time of its intervention only and within the limits of Client's instructions, if any. The Company's sole responsibility is to its Client and this document does not exonerate parties to a transaction from exercising all their rights and obligations under the transaction documents. This document cannot be reproduced except in full, without prior written approval of the Company. Any unauthorized alteration, forgery or falsification of the content or appearance of this document is unlawful and offenders may be prosecuted to the fullest extent of the law. Unless otherwise stated the results shown in this test report refer only to the sample(s) tested and such sample(s) are retained for 30 days only.

Attention: To check the authenticity of testing/inspection report & certificate, please contact us at telephone: (86-755) 83071443, or email: CN.Doccheck@sgs.com
 South of No. 6 Plant, No. 1, Runsheng Road, Suzhou Industrial Park, Suzhou Area, China (Jiangsu) Pilot Free Trade Zone 215000 t (86-512) 62992980 www.sgs.com.cn
 中国·苏州·中国(江苏)自由贸易试验区苏州片区苏州工业园区润胜路1号的6号厂房南楼 邮编: 215000 t (86-512) 62992980 sgs.china@sgs.com



1-N70-PC3-15-15-M-2-DFT-PI2BPSK-Outer_Full-75 @0-Ant1-13.447-14.160-≤15-PASS

1-N70-PC3-15-15-M-3-DFT-16QAM-Outer_Full-75 @0-Ant1-13.408-14.100-≤15-PASS



1-N70-PC3-15-15-M-4-DFT-64QAM-Outer_Full-75 @0-Ant1-13.455-14.100-≤15-PASS

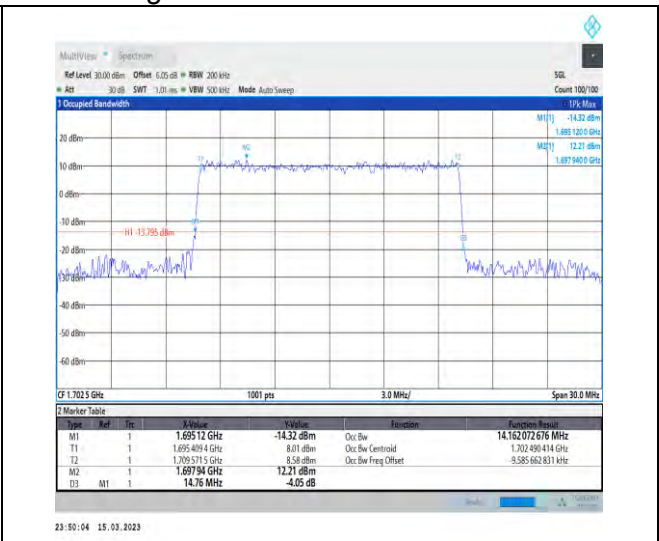
1-N70-PC3-15-15-M-5-DFT-256QAM-Outer_Full-75 @0-Ant1-13.418-14.100-≤15-PASS



Unless otherwise agreed in writing, this document is issued by the Company subject to its General Conditions of Service printed overleaf, available on request or accessible at <http://www.sgs.com/en/Terms-and-Conditions.aspx> and, for electronic format documents, subject to Terms and Conditions for Electronic Documents at <http://www.sgs.com/en/Terms-and-Conditions/Terms-e-Documents.aspx>. Attention is drawn to the limitation of liability, indemnification and jurisdiction issues defined therein. Any holder of this document is advised that information contained hereon reflects the Company's findings at the time of its intervention only and within the limits of Client's instructions, if any. The Company's sole responsibility is to its Client and this document does not exonerate parties to a transaction from exercising all their rights and obligations under the transaction documents. This document cannot be reproduced except in full, without prior written approval of the Company. Any unauthorized alteration, forgery or falsification of the content or appearance of this document is unlawful and offenders may be prosecuted to the fullest extent of the law. Unless otherwise stated the results shown in this test report refer only to the sample(s) tested and such sample(s) are retained for 30 days only.

Attention: To check the authenticity of testing/inspection report & certificate, please contact us at telephone: (86-755) 83071443, or email: CN.Doccheck@sgs.com

South of No. 6 Plant, No. 1, Runsheng Road, Suzhou Industrial Park, Suzhou Area, China (Jiangsu) Pilot Free Trade Zone 215000 t (86-512) 62992980 www.sgs.com.cn
 中国·苏州·中国(江苏)自由贸易试验区苏州片区苏州工业园区润胜路1号的6号厂房南座 邮编: 215000 t (86-512) 62992980 sgs.china@sgs.com



1-N70-PC3-15-15-M-6-CP-QPSK-Outer_Full-79@0-Ant1-14.097-14.850-≤15-PASS

1-N70-PC3-15-15-M-7-CP-16QAM-Outer_Full-79@0-Ant1-14.162-14.760-≤15-PASS



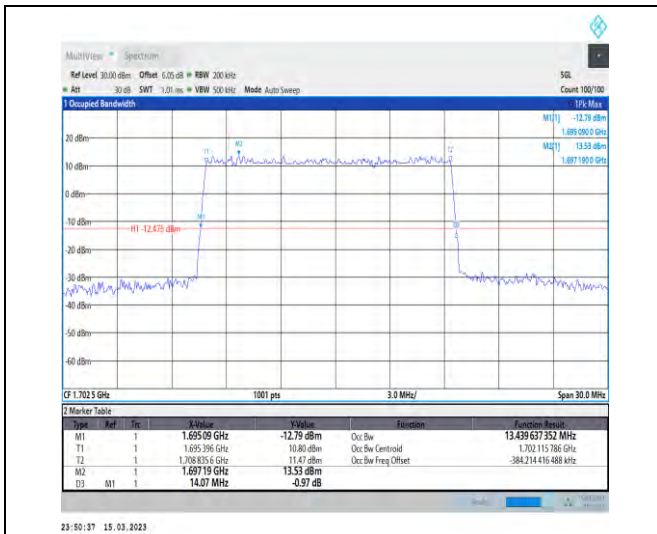
1-N70-PC3-15-15-M-8-CP-64QAM-Outer_Full-79@0-Ant1-14.099-14.790-≤15-PASS

1-N70-PC3-15-15-M-9-CP-256QAM-Outer_Full-79@0-Ant1-14.139-14.730-≤15-PASS

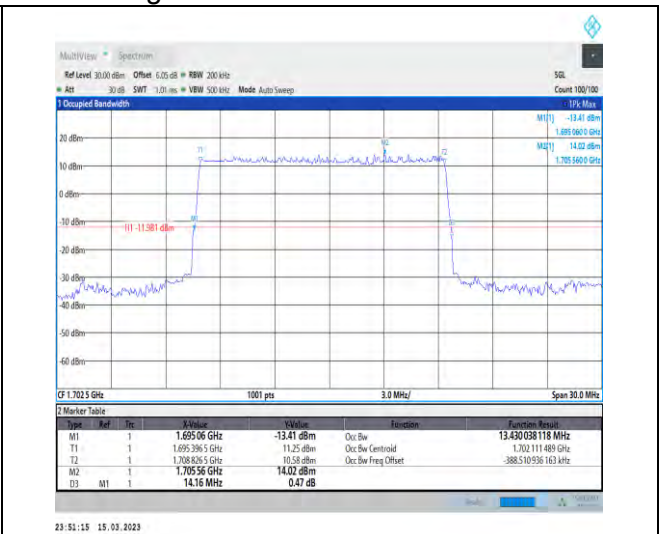


Unless otherwise agreed in writing, this document is issued by the Company subject to its General Conditions of Service printed overleaf, available on request or accessible at <http://www.sgs.com/en/Terms-and-Conditions.aspx> and, for electronic format documents, subject to Terms and Conditions for Electronic Documents at <http://www.sgs.com/en/Terms-and-Conditions/Terms-e-Documents.aspx>. Attention is drawn to the limitation of liability, indemnification and jurisdiction issues defined therein. Any holder of this document is advised that information contained hereon reflects the Company's findings at the time of its intervention only and within the limits of Client's instructions, if any. The Company's sole responsibility is to its Client and this document does not exonerate parties to a transaction from exercising all their rights and obligations under the transaction documents. This document cannot be reproduced except in full, without prior written approval of the Company. Any unauthorized alteration, forgery or falsification of the content or appearance of this document is unlawful and offenders may be prosecuted to the fullest extent of the law. Unless otherwise stated the results shown in this test report refer only to the sample(s) tested and such sample(s) are retained for 30 days only.

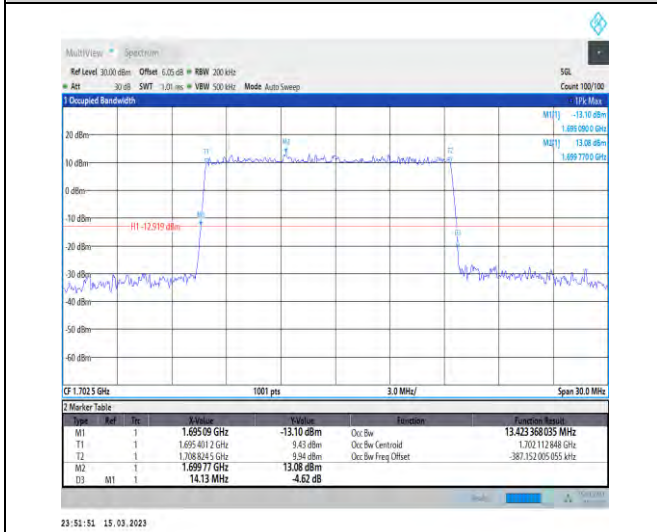
Attention: To check the authenticity of testing/inspection report & certificate, please contact us at telephone: (86-755) 8307 1443, or email: CN.Doccheck@sgs.com
 South of No. 6 Plant, No. 1, Runsheng Road, Suzhou Industrial Park, Suzhou Area, China (Jiangsu) Pilot Free Trade Zone 215000 t (86-512) 62992980 www.sgs.com.cn
 中国·苏州·中国(江苏)自由贸易试验区苏州片区苏州工业园区润胜路1号的6号厂房南楼 邮编: 215000 t (86-512) 62992980 sgs.china@sgs.com



1-N70-PC3-15-15-H-1-DFT-QPSK-Outer_Full-75@0-Ant1-13.44-14.070-≤15-PASS



1-N70-PC3-15-15-H-2-DFT-PI2BPSK-Outer_Full-75@0-Ant1-13.43-14.160-≤15-PASS



1-N70-PC3-15-15-H-3-DFT-16QAM-Outer_Full-75@0-Ant1-13.423-14.130-≤15-PASS



1-N70-PC3-15-15-H-4-DFT-64QAM-Outer_Full-75@0-Ant1-13.418-14.100-≤15-PASS



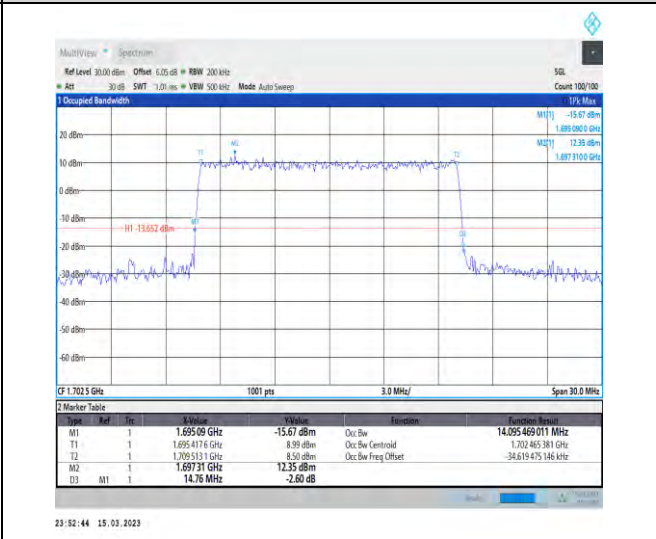
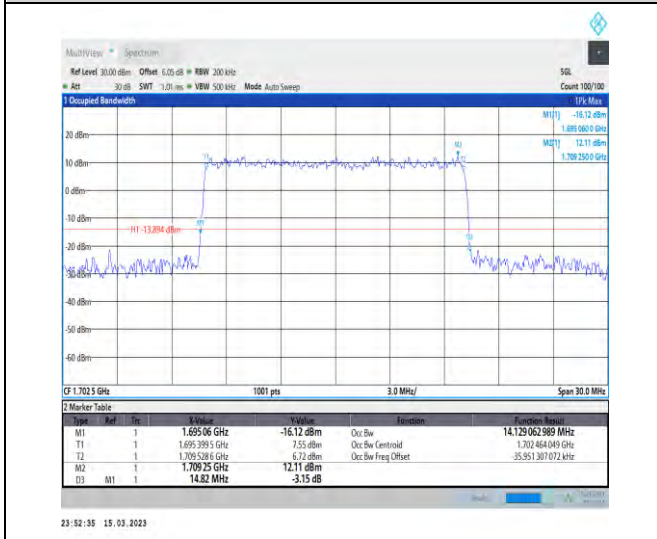
Unless otherwise agreed in writing, this document is issued by the Company subject to its General Conditions of Service printed overleaf, available on request or accessible at <http://www.sgs.com/en/Terms-and-Conditions.aspx> and, for electronic format documents, subject to Terms and Conditions for Electronic Documents at <http://www.sgs.com/en/Terms-and-Conditions/Terms-e-Documents.aspx>. Attention is drawn to the limitation of liability, indemnification and jurisdiction issues defined therein. Any holder of this document is advised that information contained hereon reflects the Company's findings at the time of its intervention only and within the limits of Client's instructions, if any. The Company's sole responsibility is to its Client and this document does not exonerate parties to a transaction from exercising all their rights and obligations under the transaction documents. This document cannot be reproduced except in full, without prior written approval of the Company. Any unauthorized alteration, forgery or falsification of the content or appearance of this document is unlawful and offenders may be prosecuted to the fullest extent of the law. Unless otherwise stated the results shown in this test report refer only to the sample(s) tested and such sample(s) are retained for 30 days only.

Attention: To check the authenticity of testing/inspection report & certificate, please contact us at telephone: (86-755) 83071443, or email: CN.Doccheck@sgs.com
 South of No. 6 Plant, No. 1, Runsheng Road, Suzhou Industrial Park, Suzhou Area, China (Jiangsu) Pilot Free Trade Zone 215000 t (86-512) 62992980 www.sgs.com.cn
 中国·苏州·中国(江苏)自由贸易试验区苏州片区苏州工业园区润胜路1号的6号厂房南楼 邮编: 215000 t (86-512) 62992980 sgs.china@sgs.com



1-N70-PC3-15-15-H-5-DFT-256QAM-Outer_Full-75@0-Ant1-13.435-14.040-≤15-PASS

1-N70-PC3-15-15-H-6-CP-QPSK-Outer_Full-79@0-Ant1-14.117-15.540-≤15-PASS



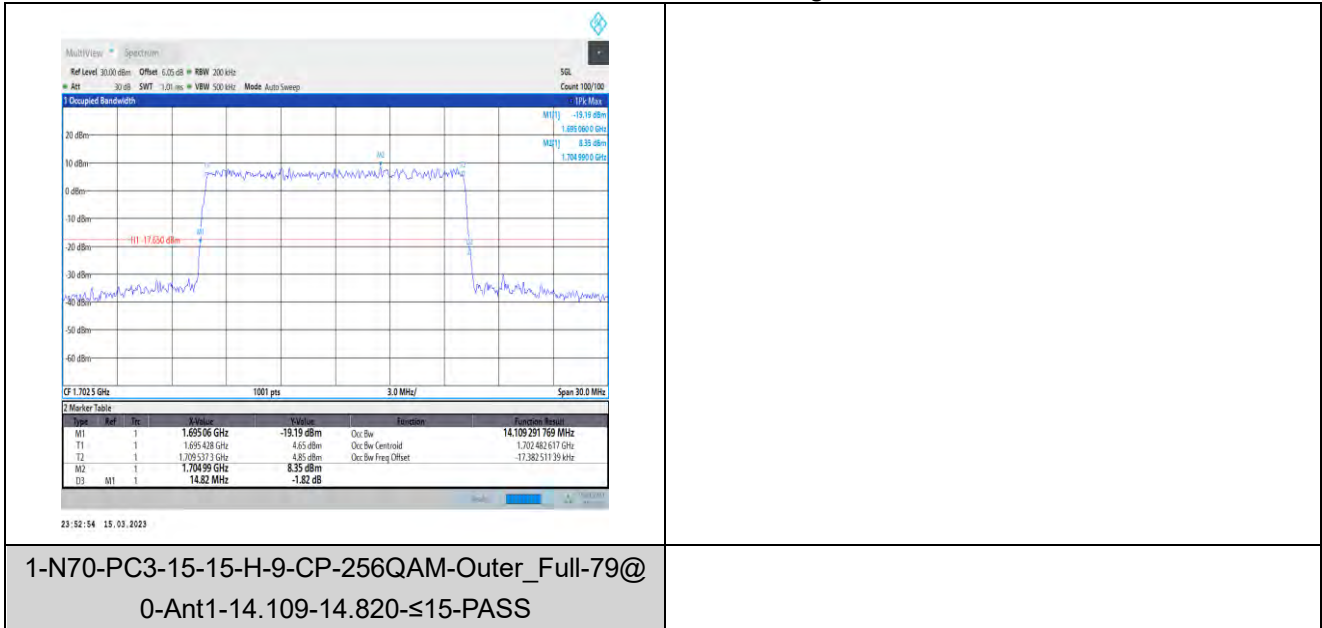
1-N70-PC3-15-15-H-7-CP-16QAM-Outer_Full-79@0-Ant1-14.129-14.820-≤15-PASS

1-N70-PC3-15-15-H-8-CP-64QAM-Outer_Full-79@0-Ant1-14.095-14.760-≤15-PASS



Unless otherwise agreed in writing, this document is issued by the Company subject to its General Conditions of Service printed overleaf, available on request or accessible at <http://www.sgs.com/en/Terms-and-Conditions.aspx> and, for electronic format documents, subject to Terms and Conditions for Electronic Documents at <http://www.sgs.com/en/Terms-and-Conditions/Terms-e-Documents.aspx>. Attention is drawn to the limitation of liability, indemnification and jurisdiction issues defined therein. Any holder of this document is advised that information contained hereon reflects the Company's findings at the time of its intervention only and within the limits of Client's instructions, if any. The Company's sole responsibility is to its Client and this document does not exonerate parties to a transaction from exercising all their rights and obligations under the transaction documents. This document cannot be reproduced except in full, without prior written approval of the Company. Any unauthorized alteration, forgery or falsification of the content or appearance of this document is unlawful and offenders may be prosecuted to the fullest extent of the law. Unless otherwise stated the results shown in this test report refer only to the sample(s) tested and such sample(s) are retained for 30 days only.

Attention: To check the authenticity of testing/inspection report & certificate, please contact us at telephone: (86-755) 8307 1443, or email: CN.Doccheck@sgs.com
 South of No. 6 Plant, No. 1, Runsheng Road, Suzhou Industrial Park, Suzhou Area, China (Jiangsu) Pilot Free Trade Zone 215000 t (86-512) 62992980 www.sgs.com.cn
 中国·苏州·中国(江苏)自由贸易试验区苏州片区苏州工业园区润胜路1号的6号厂房南楼 邮编: 215000 t (86-512) 62992980 sgs.china@sgs.com



1-N70-PC3-15-15-H-9-CP-256QAM-Outer_Full-79@
0-Ant1-14.109-14.820-≤15-PASS

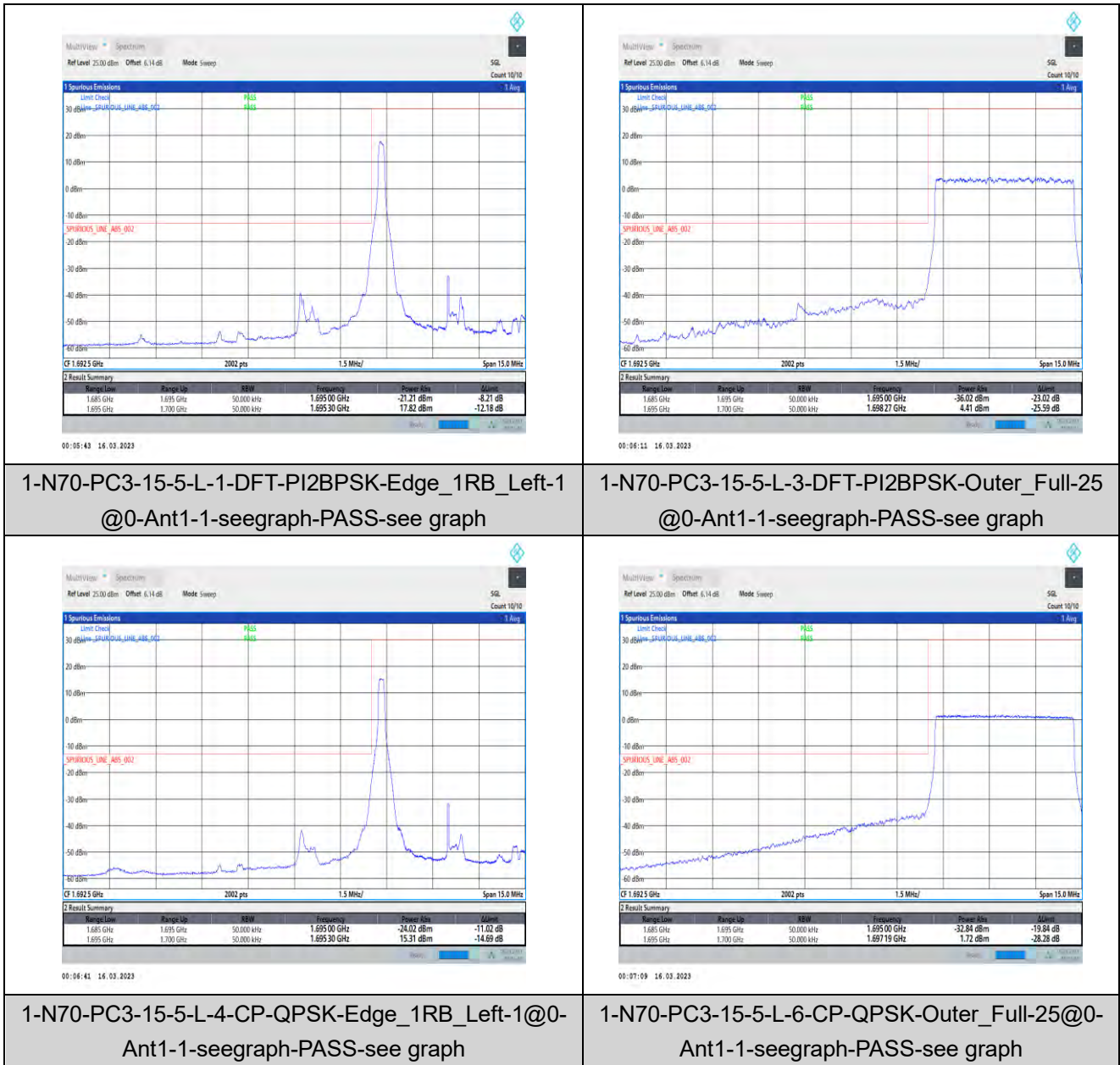


Unless otherwise agreed in writing, this document is issued by the Company subject to its General Conditions of Service printed overleaf, available on request or accessible at <http://www.sgs.com/en/Terms-and-Conditions.aspx> and, for electronic format documents, subject to Terms and Conditions for Electronic Documents at <http://www.sgs.com/en/Terms-and-Conditions/Terms-e-Documents.aspx>. Attention is drawn to the limitation of liability, indemnification and jurisdiction issues defined therein. Any holder of this document is advised that information contained hereon reflects the Company's findings at the time of its intervention only and within the limits of Client's instructions, if any. The Company's sole responsibility is to its Client and this document does not exonerate parties to a transaction from exercising all their rights and obligations under the transaction documents. This document cannot be reproduced except in full, without prior written approval of the Company. Any unauthorized alteration, forgery or falsification of the content or appearance of this document is unlawful and offenders may be prosecuted to the fullest extent of the law. Unless otherwise stated the results shown in this test report refer only to the sample(s) tested and such sample(s) are retained for 30 days only.

Attention: To check the authenticity of testing/inspection report & certificate, please contact us at telephone: (86-755) 8307 1443, or email: CN.Doccheck@sgs.com
 South of No. 6 Plant, No. 1, Runsheng Road, Suzhou Industrial Park, Suzhou Area, China (Jiangsu) Pilot Free Trade Zone 215000 t (86-512) 62992980 www.sgs.com.cn
 中国·苏州·中国(江苏)自由贸易试验区苏州片区苏州工业园区润胜路1号的6号厂房南楼 邮编: 215000 t (86-512) 62992980 sgs.china@sgs.com

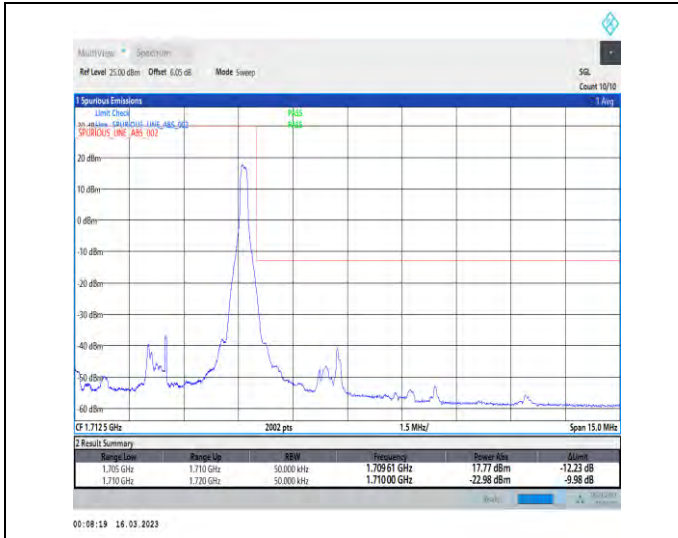
Band Edge for SA

Test Graphs



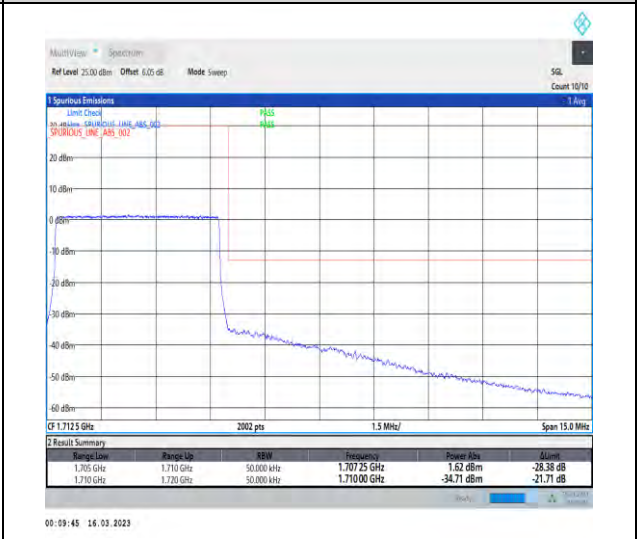
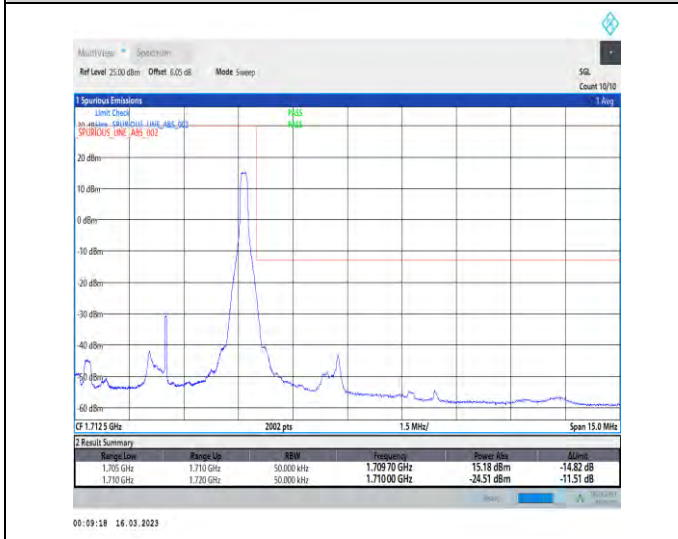
Unless otherwise agreed in writing, this document is issued by the Company subject to its General Conditions of Service printed overleaf, available on request or accessible at <http://www.sgs.com/en/Terms-and-Conditions.aspx> and, for electronic format documents, subject to Terms and Conditions for Electronic Documents at <http://www.sgs.com/en/Terms-and-Conditions/Terms-e-Documents.aspx>. Attention is drawn to the limitation of liability, indemnification and jurisdiction issues defined therein. Any holder of this document is advised that information contained hereon reflects the Company's findings at the time of its intervention only and within the limits of Client's instructions, if any. The Company's sole responsibility is to its Client and this document does not exonerate parties to a transaction from exercising all their rights and obligations under the transaction documents. This document cannot be reproduced except in full, without prior written approval of the Company. Any unauthorized alteration, forgery or falsification of the content or appearance of this document is unlawful and offenders may be prosecuted to the fullest extent of the law. Unless otherwise stated the results shown in this test report refer only to the sample(s) tested and such sample(s) are retained for 30 days only.

Attention: To check the authenticity of testing/inspection report & certificate, please contact us at telephone: (86-755) 8307 1443, or email: CN.Doccheck@sgs.com
 South of No. 6 Plant, No. 1, Runsheng Road, Suzhou Industrial Park, Suzhou Area, China (Jiangsu) Pilot Free Trade Zone 215000 t (86-512) 62992980 www.sgs.com.cn
 中国·苏州·中国(江苏)自由贸易试验区苏州片区苏州工业园区润胜路1号的6号厂房南楼 邮编: 215000 t (86-512) 62992980 sgs.china@sgs.com



1-N70-PC3-15-5-H-2-DFT-PI2BPSK-Edge_1RB_Right-1@24-Ant1-1-seegraph-PASS-see graph

1-N70-PC3-15-5-H-3-DFT-PI2BPSK-Outer_Full-25@0-Ant1-1-seegraph-PASS-see graph



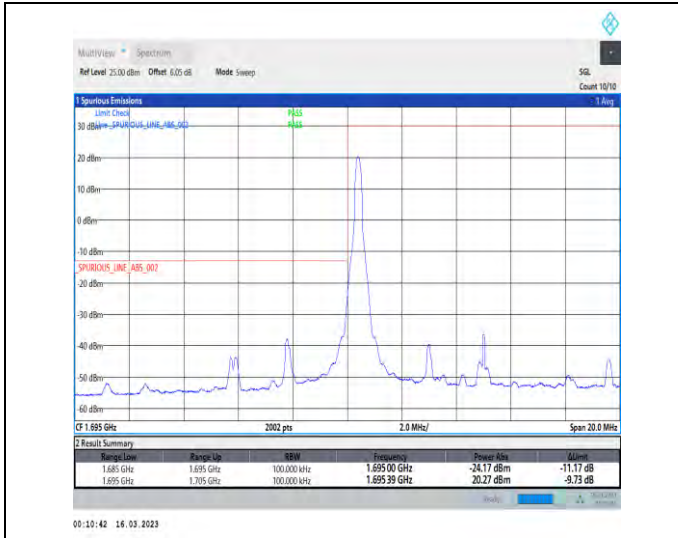
1-N70-PC3-15-5-H-5-CP-QPSK-Edge_1RB_Right-1@24-Ant1-1-seegraph-PASS-see graph

1-N70-PC3-15-5-H-6-CP-QPSK-Outer_Full-25@0-Ant1-1-seegraph-PASS-see graph



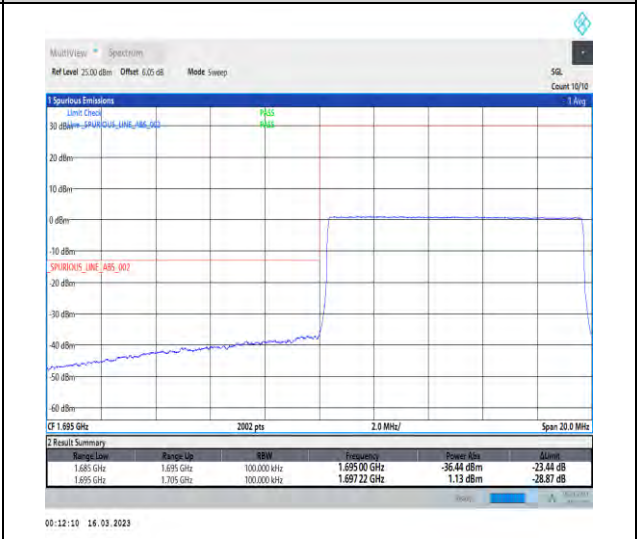
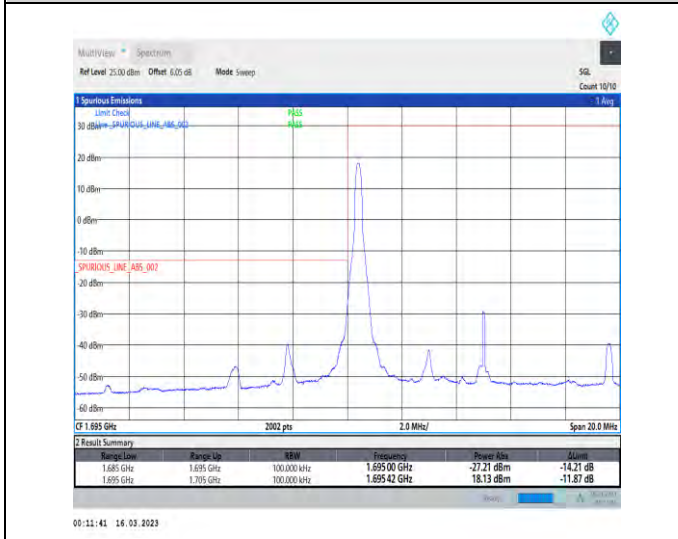
Unless otherwise agreed in writing, this document is issued by the Company subject to its General Conditions of Service printed overleaf, available on request or accessible at <http://www.sgs.com/en/Terms-and-Conditions.aspx> and, for electronic format documents, subject to Terms and Conditions for Electronic Documents at <http://www.sgs.com/en/Terms-and-Conditions/Terms-e-Documents.aspx>. Attention is drawn to the limitation of liability, indemnification and jurisdiction issues defined therein. Any holder of this document is advised that information contained hereon reflects the Company's findings at the time of its intervention only and within the limits of Client's instructions, if any. The Company's sole responsibility is to its Client and this document does not exonerate parties to a transaction from exercising all their rights and obligations under the transaction documents. This document cannot be reproduced except in full, without prior written approval of the Company. Any unauthorized alteration, forgery or falsification of the content or appearance of this document is unlawful and offenders may be prosecuted to the fullest extent of the law. Unless otherwise stated the results shown in this test report refer only to the sample(s) tested and such sample(s) are retained for 30 days only.

Attention: To check the authenticity of testing/inspection report & certificate, please contact us at telephone: (86-755) 8307 1443, or email: CN.Doccheck@sgs.com
 South of No. 6 Plant, No. 1, Runsheng Road, Suzhou Industrial Park, Suzhou Area, China (Jiangsu) Pilot Free Trade Zone 215000 t (86-512) 62992980 www.sgs.com.cn
 中国·苏州·中国(江苏)自由贸易试验区苏州片区苏州工业园区润胜路1号的6号厂房南楼 邮编: 215000 t (86-512) 62992980 sgs.china@sgs.com



1-N70-PC3-15-10-L-1-DFT-PI2BPSK-Edge_1RB_Left-1@0-Ant1-1-seegraph-PASS-see graph

1-N70-PC3-15-10-L-3-DFT-PI2BPSK-Outer_Full-50@0-Ant1-1-seegraph-PASS-see graph



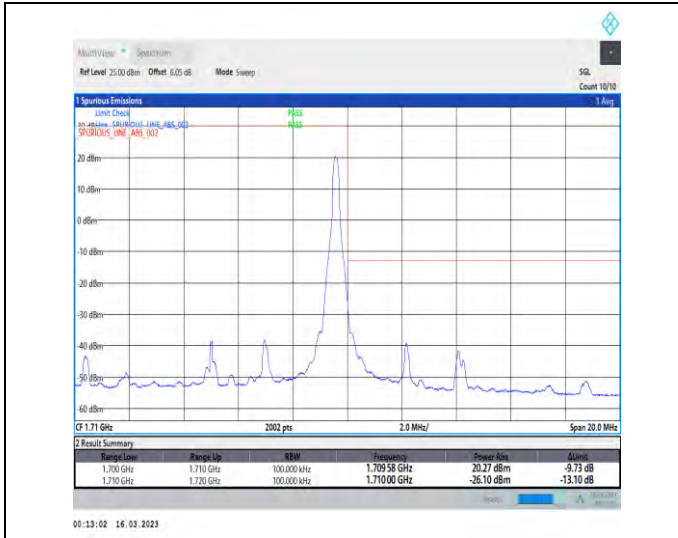
1-N70-PC3-15-10-L-4-CP-QPSK-Edge_1RB_Left-1@0-Ant1-1-seegraph-PASS-see graph

1-N70-PC3-15-10-L-6-CP-QPSK-Outer_Full-52@0-Ant1-1-seegraph-PASS-see graph



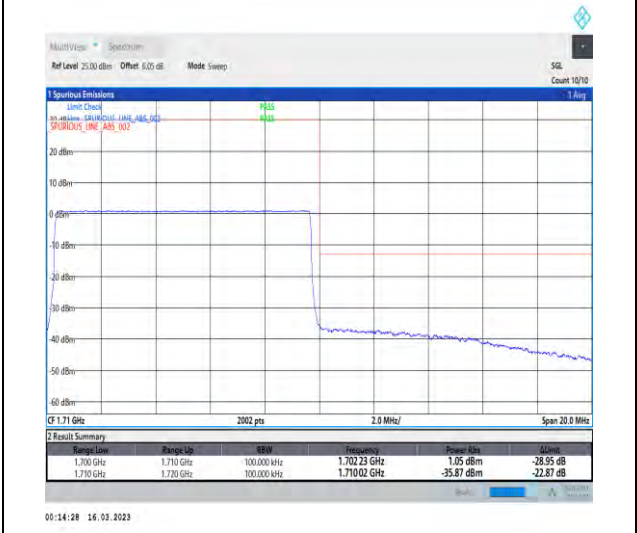
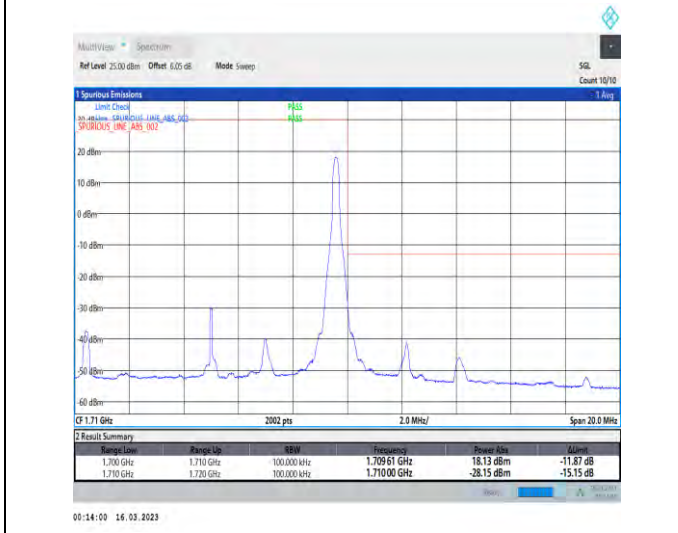
Unless otherwise agreed in writing, this document is issued by the Company subject to its General Conditions of Service printed overleaf, available on request or accessible at <http://www.sgs.com/en/Terms-and-Conditions.aspx> and, for electronic format documents, subject to Terms and Conditions for Electronic Documents at <http://www.sgs.com/en/Terms-and-Conditions/Terms-e-Documents.aspx>. Attention is drawn to the limitation of liability, indemnification and jurisdiction issues defined therein. Any holder of this document is advised that information contained hereon reflects the Company's findings at the time of its intervention only and within the limits of Client's instructions, if any. The Company's sole responsibility is to its Client and this document does not exonerate parties to a transaction from exercising all their rights and obligations under the transaction documents. This document cannot be reproduced except in full, without prior written approval of the Company. Any unauthorized alteration, forgery or falsification of the content or appearance of this document is unlawful and offenders may be prosecuted to the fullest extent of the law. Unless otherwise stated the results shown in this test report refer only to the sample(s) tested and such sample(s) are retained for 30 days only.

Attention: To check the authenticity of testing/inspection report & certificate, please contact us at telephone: (86-755) 8307 1443, or email: CN.Doccheck@sgs.com
 South of No. 6 Plant, No. 1, Runsheng Road, Suzhou Industrial Park, Suzhou Area, China (Jiangsu) Pk01 Free Trade Zone 215000 t (86-512) 62992980 www.sgs.com.cn
 中国·苏州·中国(江苏)自由贸易试验区苏州片区苏州工业园区润胜路1号的6号厂房南楼 邮编: 215000 t (86-512) 62992980 sgs.china@sgs.com



1-N70-PC3-15-10-H-2-DFT-PI2BPSK-Edge_1RB_Right-t@51-Ant1-1-seegraph-PASS-see graph

1-N70-PC3-15-10-H-3-DFT-PI2BPSK-Outer_Full-50@0-Ant1-1-seegraph-PASS-see graph



1-N70-PC3-15-10-H-5-CP-QPSK-Edge_1RB_Right-1@51-Ant1-1-seegraph-PASS-see graph

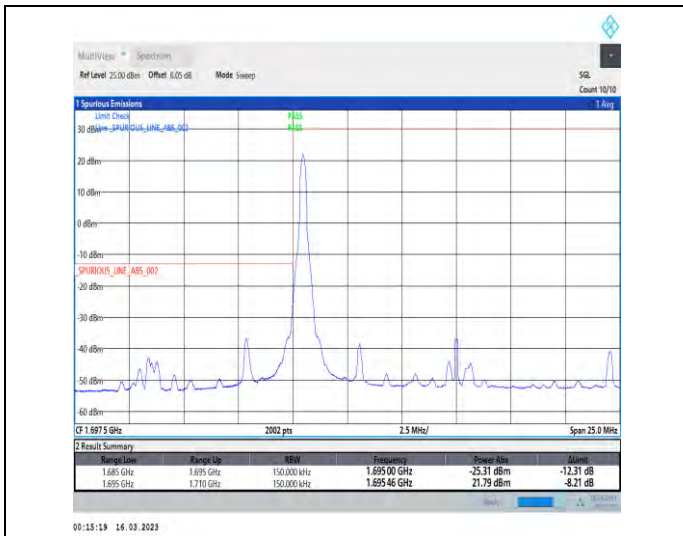
1-N70-PC3-15-10-H-6-CP-QPSK-Outer_Full-52@0-Ant1-1-seegraph-PASS-see graph



Unless otherwise agreed in writing, this document is issued by the Company subject to its General Conditions of Service printed overleaf, available on request or accessible at <http://www.sgs.com/en/Terms-and-Conditions.aspx> and, for electronic format documents, subject to Terms and Conditions for Electronic Documents at <http://www.sgs.com/en/Terms-and-Conditions/Terms-e-Documents.aspx>. Attention is drawn to the limitation of liability, indemnification and jurisdiction issues defined therein. Any holder of this document is advised that information contained hereon reflects the Company's findings at the time of its intervention only and within the limits of Client's instructions, if any. The Company's sole responsibility is to its Client and this document does not exonerate parties to a transaction from exercising all their rights and obligations under the transaction documents. This document cannot be reproduced except in full, without prior written approval of the Company. Any unauthorized alteration, forgery or falsification of the content or appearance of this document is unlawful and offenders may be prosecuted to the fullest extent of the law. Unless otherwise stated the results shown in this test report refer only to the sample(s) tested and such sample(s) are retained for 30 days only.

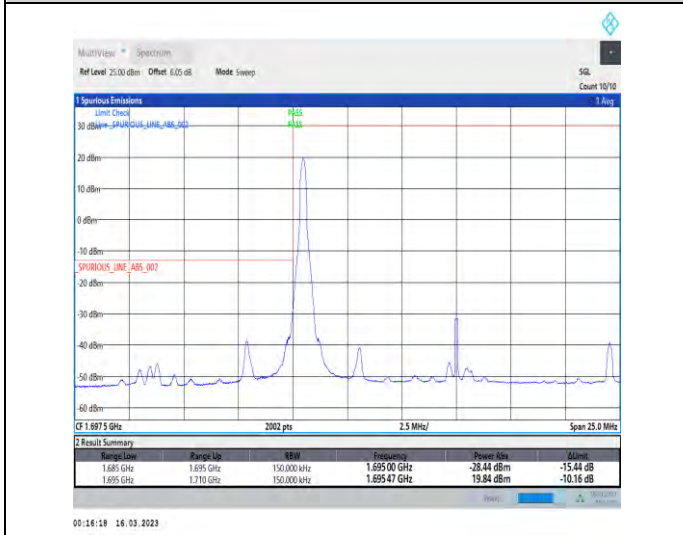
Attention: To check the authenticity of testing/inspection report & certificate, please contact us at telephone: (86-755) 8307 1443, or email: CN.Doccheck@sgs.com

South of No. 6 Plant, No. 1, Runsheng Road, Suzhou Industrial Park, Suzhou Area, China (Jiangsu) Pilot Free Trade Zone 215000 t (86-512) 62992980 www.sgs.com.cn
 中国·苏州·中国(江苏)自由贸易试验区苏州片区苏州工业园区润胜路1号的6号厂房南楼 邮编: 215000 t (86-512) 62992980 sgs.china@sgs.com



1-N70-PC3-15-15-L-1-DFT-PI2BPSK-Edge_1RB_Left-1@0-Ant1-1-seegraph-PASS-see graph

1-N70-PC3-15-15-L-3-DFT-PI2BPSK-Outer_Full-75@0-Ant1-1-seegraph-PASS-see graph



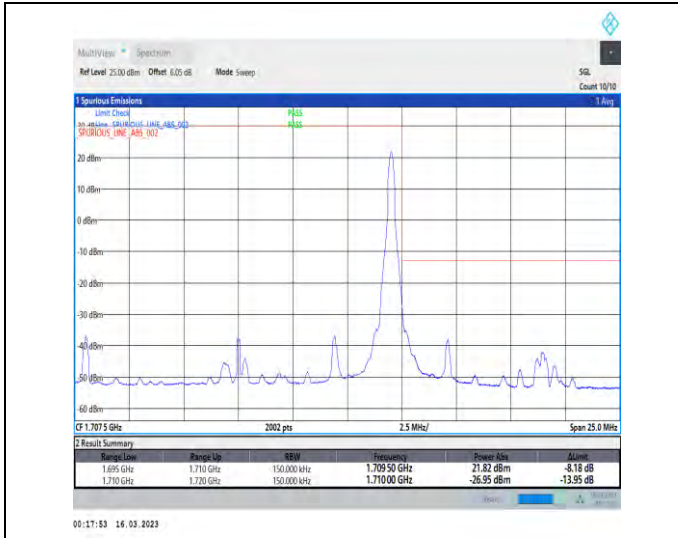
1-N70-PC3-15-15-L-4-CP-QPSK-Edge_1RB_Left-1@0-Ant1-1-seegraph-PASS-see graph

1-N70-PC3-15-15-L-6-CP-QPSK-Outer_Full-79@0-Ant1-1-seegraph-PASS-see graph



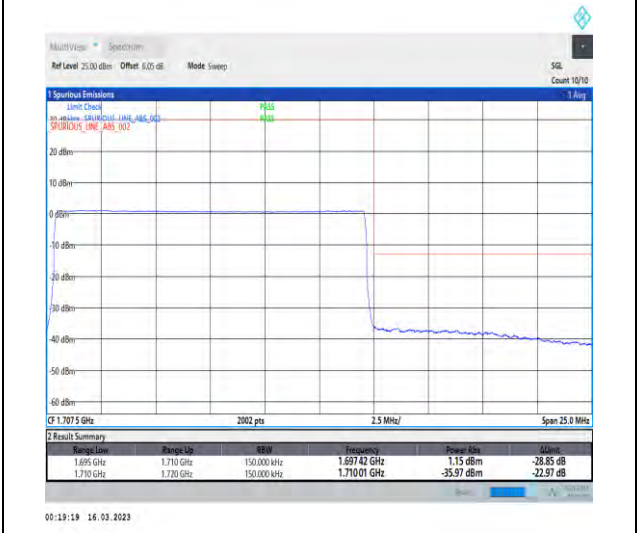
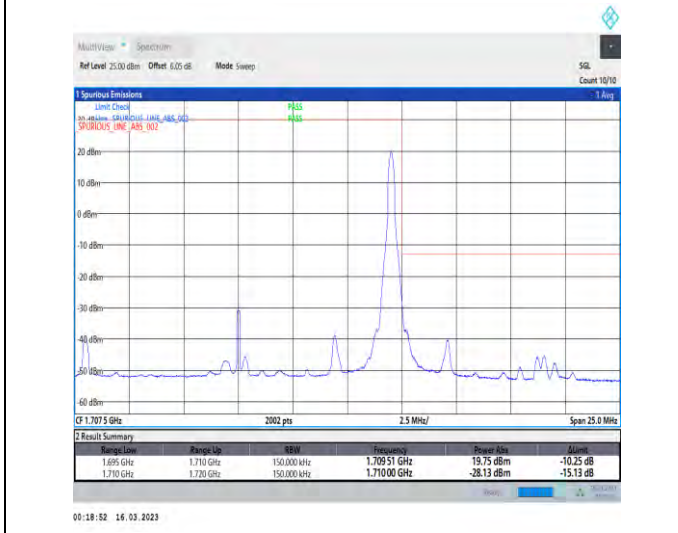
Unless otherwise agreed in writing, this document is issued by the Company subject to its General Conditions of Service printed overleaf, available on request or accessible at <http://www.sgs.com/en/Terms-and-Conditions.aspx> and, for electronic format documents, subject to Terms and Conditions for Electronic Documents at <http://www.sgs.com/en/Terms-and-Conditions/Terms-e-Documents.aspx>. Attention is drawn to the limitation of liability, indemnification and jurisdiction issues defined therein. Any holder of this document is advised that information contained hereon reflects the Company's findings at the time of its intervention only and within the limits of Client's instructions, if any. The Company's sole responsibility is to its Client and this document does not exonerate parties to a transaction from exercising all their rights and obligations under the transaction documents. This document cannot be reproduced except in full, without prior written approval of the Company. Any unauthorized alteration, forgery or falsification of the content or appearance of this document is unlawful and offenders may be prosecuted to the fullest extent of the law. Unless otherwise stated the results shown in this test report refer only to the sample(s) tested and such sample(s) are retained for 30 days only.

Attention: To check the authenticity of testing/inspection report & certificate, please contact us at telephone: (86-755) 8307 1443, or email: CN.Doccheck@sgs.com
 South of No. 6 Plant, No. 1, Runsheng Road, Suzhou Industrial Park, Suzhou Area, China (Jiangsu) Pilot Free Trade Zone 215000 t (86-512) 62992980 www.sgs.com.cn
 中国·苏州·中国(江苏)自由贸易试验区苏州片区苏州工业园区润胜路1号的6号厂房南座 邮编: 215000 t (86-512) 62992980 sgs.china@sgs.com



1-N70-PC3-15-15-H-2-DFT-PI2BPSK-Edge_1RB_Right-t1@78-Ant1-1-seegraph-PASS-see graph

1-N70-PC3-15-15-H-3-DFT-PI2BPSK-Outer_Full-75@0-Ant1-1-seegraph-PASS-see graph



1-N70-PC3-15-15-H-5-CP-QPSK-Edge_1RB_Right-1@78-Ant1-1-seegraph-PASS-see graph

1-N70-PC3-15-15-H-6-CP-QPSK-Outer_Full-79@0-Ant1-1-seegraph-PASS-see graph

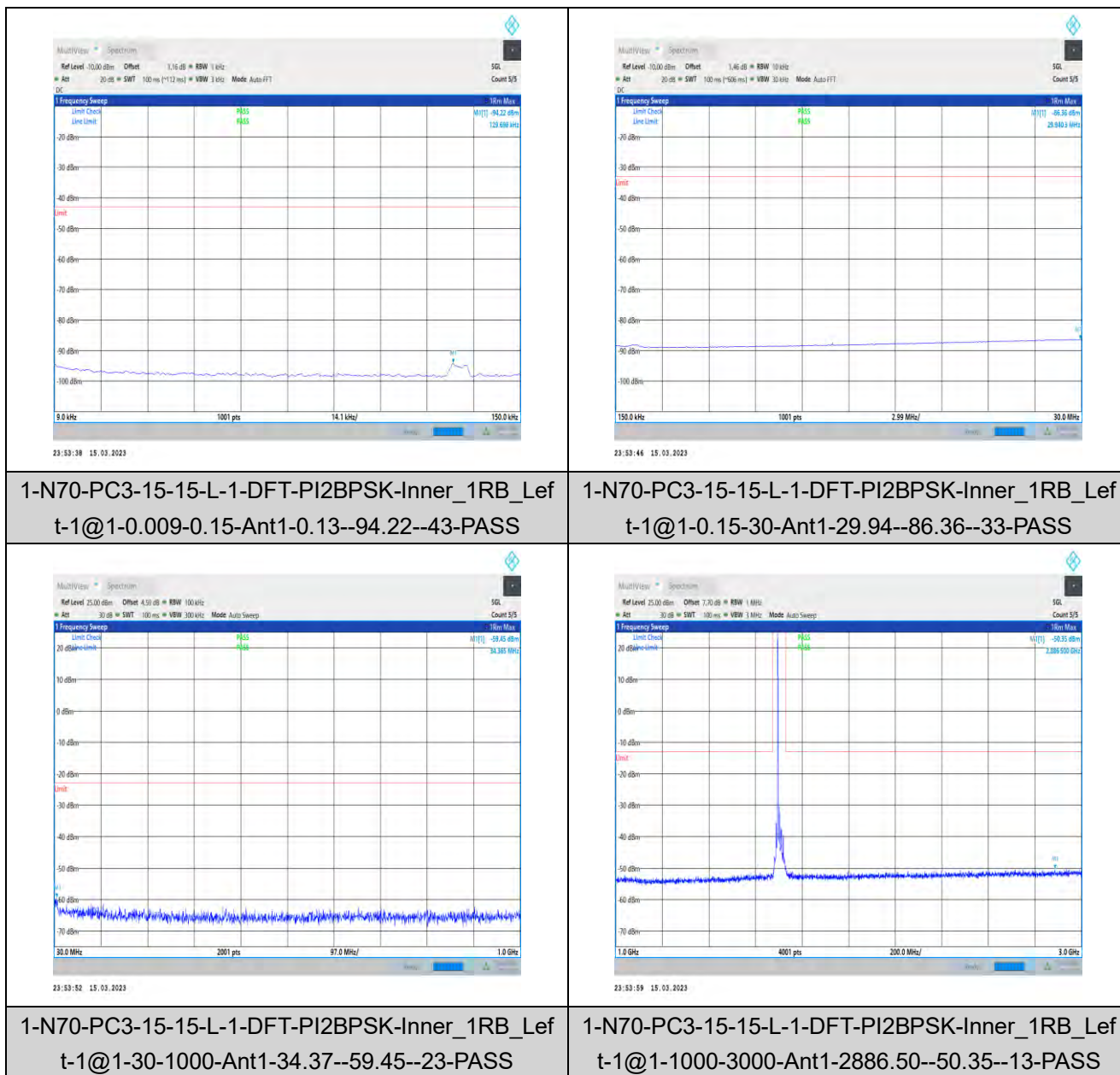


Unless otherwise agreed in writing, this document is issued by the Company subject to its General Conditions of Service printed overleaf, available on request or accessible at <http://www.sgs.com/en/Terms-and-Conditions.aspx> and, for electronic format documents, subject to Terms and Conditions for Electronic Documents at <http://www.sgs.com/en/Terms-and-Conditions/Terms-e-Documents.aspx>. Attention is drawn to the limitation of liability, indemnification and jurisdiction issues defined therein. Any holder of this document is advised that information contained hereon reflects the Company's findings at the time of its intervention only and within the limits of Client's instructions, if any. The Company's sole responsibility is to its Client and this document does not exonerate parties to a transaction from exercising all their rights and obligations under the transaction documents. This document cannot be reproduced except in full, without prior written approval of the Company. Any unauthorized alteration, forgery or falsification of the content or appearance of this document is unlawful and offenders may be prosecuted to the fullest extent of the law. Unless otherwise stated the results shown in this test report refer only to the sample(s) tested and such sample(s) are retained for 30 days only.

Attention: To check the authenticity of testing/inspection report & certificate, please contact us at telephone: (86-755) 8307 1443, or email: CN.Doccheck@sgs.com
 South of No. 6 Plant, No. 1, Runsheng Road, Suzhou Industrial Park, Suzhou Area, China (Jiangsu) Pilot Free Trade Zone 215000 t (86-512) 62992980 www.sgs.com.cn
 中国·苏州·中国(江苏)自由贸易试验区苏州片区苏州工业园区润胜路1号的6号厂房南楼 邮编: 215000 t (86-512) 62992980 sgs.china@sgs.com

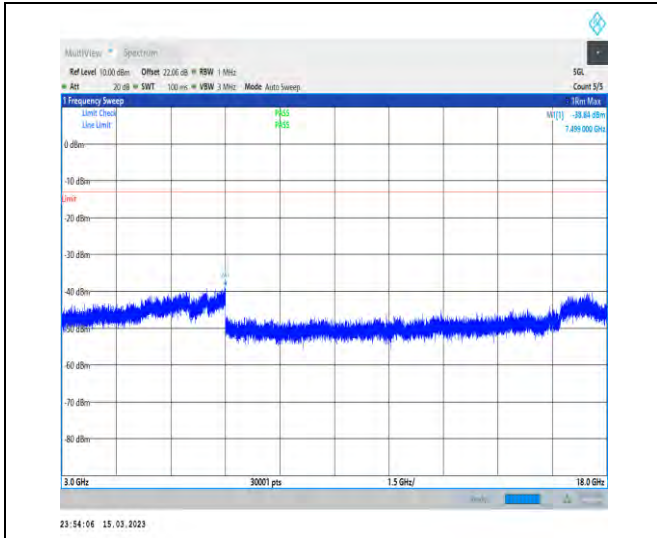
Conducted Spurious Emission for SA

Test Graphs

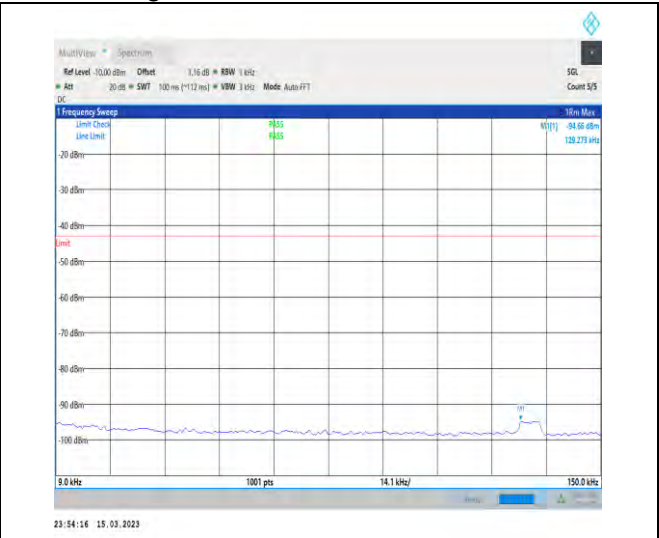


Unless otherwise agreed in writing, this document is issued by the Company subject to its General Conditions of Service printed overleaf, available on request or accessible at <http://www.sgs.com/en/Terms-and-Conditions.aspx> and, for electronic format documents, subject to Terms and Conditions for Electronic Documents at <http://www.sgs.com/en/Terms-and-Conditions/Terms-e-Documents.aspx>. Attention is drawn to the limitation of liability, indemnification and jurisdiction issues defined therein. Any holder of this document is advised that information contained hereon reflects the Company's findings at the time of its intervention only and within the limits of Client's instructions, if any. The Company's sole responsibility is to its Client and this document does not exonerate parties to a transaction from exercising all their rights and obligations under the transaction documents. This document cannot be reproduced except in full, without prior written approval of the Company. Any unauthorized alteration, forgery or falsification of the content or appearance of this document is unlawful and offenders may be prosecuted to the fullest extent of the law. Unless otherwise stated the results shown in this test report refer only to the sample(s) tested and such sample(s) are retained for 30 days only.

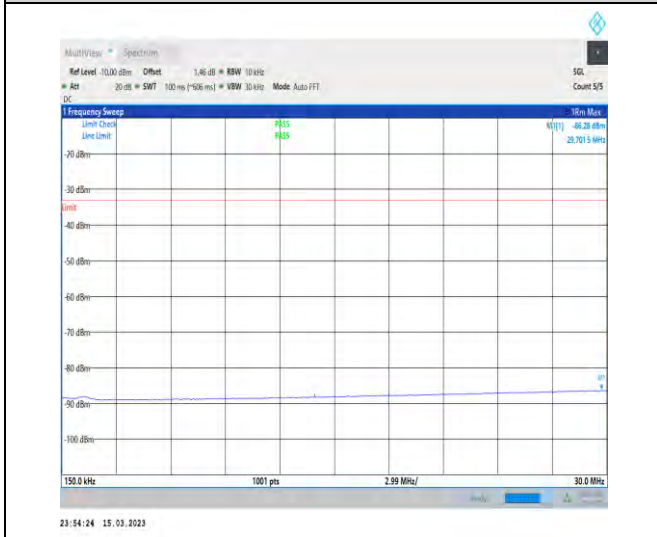
Attention: To check the authenticity of testing/inspection report & certificate, please contact us at telephone: (86-755) 8307 1443, or email: CN.Doccheck@sgs.com
 South of No. 6 Plant, No. 1, Runsheng Road, Suzhou Industrial Park, Suzhou Area, China (Jiangsu) Pilot Free Trade Zone 215000 t (86-512) 62992980 www.sgs.com.cn
 中国·苏州·中国(江苏)自由贸易试验区苏州片区苏州工业园区润胜路1号的6号厂房南楼 邮编: 215000 t (86-512) 62992980 sgs.china@sgs.com



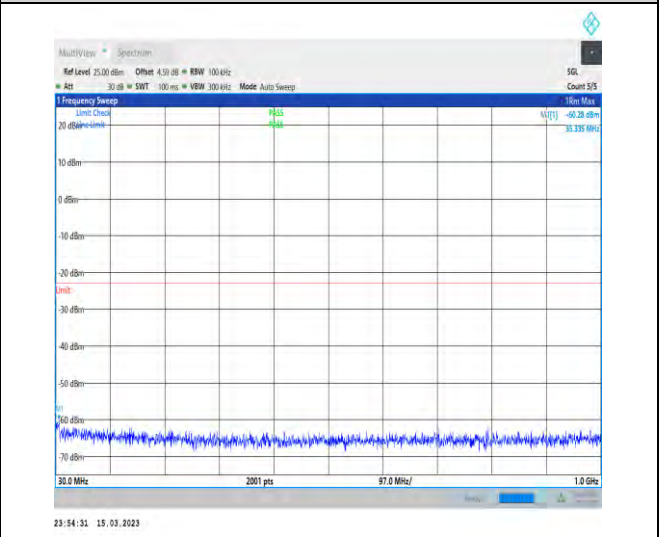
1-N70-PC3-15-15-L-1-DFT-PI2BPSK-Inner_1RB_Lef t-1@1-3000-18000-Ant1-7499.00--38.84--13-PASS



1-N70-PC3-15-15-M-1-DFT-PI2BPSK-Inner_1RB_Le ft-1@1-0.009-0.15-Ant1-0.13--94.66--43-PASS



1-N70-PC3-15-15-M-1-DFT-PI2BPSK-Inner_1RB_Le ft-1@1-0.15-30-Ant1-29.70--86.28--33-PASS

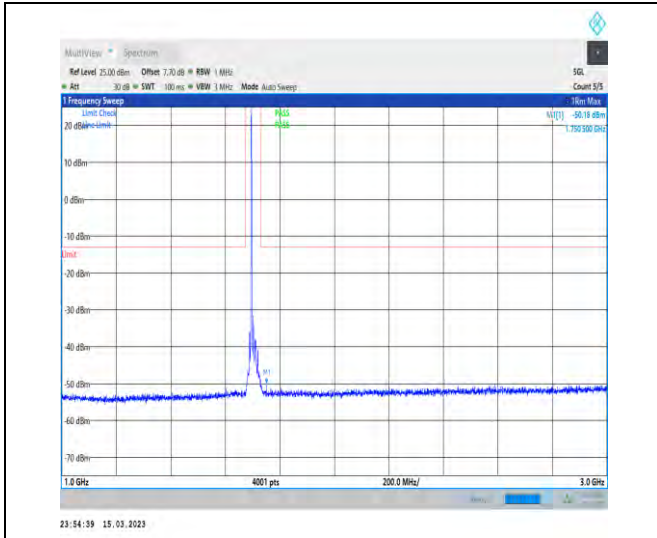


1-N70-PC3-15-15-M-1-DFT-PI2BPSK-Inner_1RB_Le ft-1@1-30-1000-Ant1-35.34--60.28--23-PASS

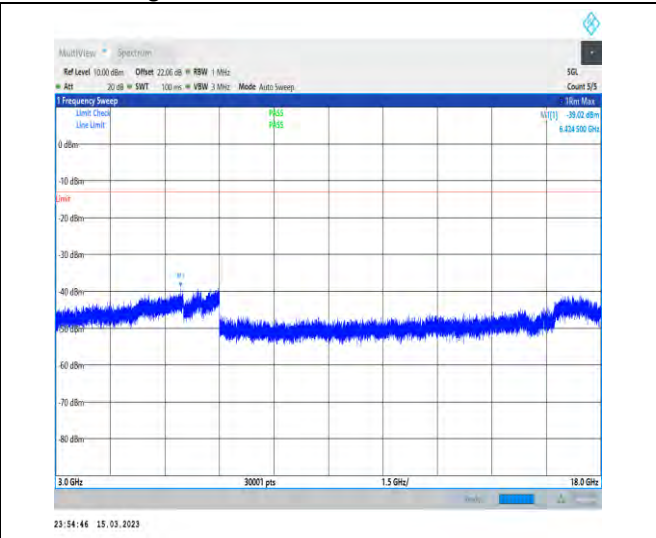


Unless otherwise agreed in writing, this document is issued by the Company subject to its General Conditions of Service printed overleaf, available on request or accessible at <http://www.sgs.com/en/Terms-and-Conditions.aspx> and, for electronic format documents, subject to Terms and Conditions for Electronic Documents at <http://www.sgs.com/en/Terms-and-Conditions/Terms-e-Documents.aspx>. Attention is drawn to the limitation of liability, indemnification and jurisdiction issues defined therein. Any holder of this document is advised that information contained hereon reflects the Company's findings at the time of its intervention only and within the limits of Client's instructions, if any. The Company's sole responsibility is to its Client and this document does not exonerate parties to a transaction from exercising all their rights and obligations under the transaction documents. This document cannot be reproduced except in full, without prior written approval of the Company. Any unauthorized alteration, forgery or falsification of the content or appearance of this document is unlawful and offenders may be prosecuted to the fullest extent of the law. Unless otherwise stated the results shown in this test report refer only to the sample(s) tested and such sample(s) are retained for 30 days only.

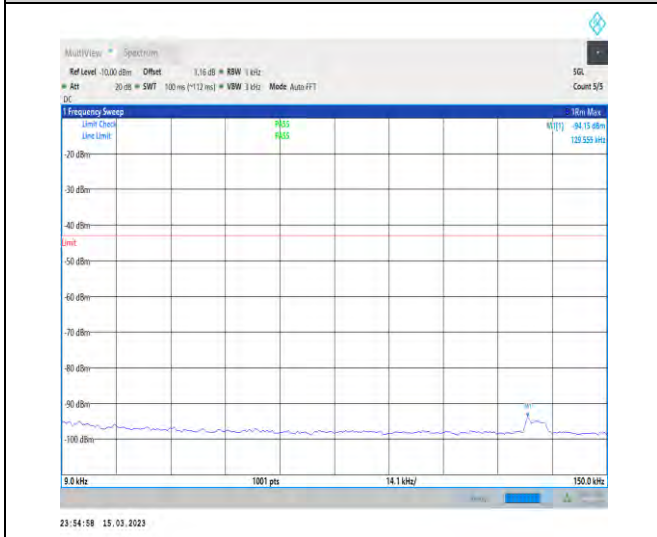
Attention: To check the authenticity of testing/inspection report & certificate, please contact us at telephone: (86-755) 8307 1443, or email: CN.Doccheck@sgs.com
 South of No. 6 Plant, No. 1, Runsheng Road, Suzhou Industrial Park, Suzhou Area, China (Jiangsu) Pilot Free Trade Zone 215000 t (86-512) 62992980 www.sgs.com.cn
 中国·苏州·中国(江苏)自由贸易试验区苏州片区苏州工业园区润胜路1号的6号厂房南楼 邮编: 215000 t (86-512) 62992980 sgs.china@sgs.com



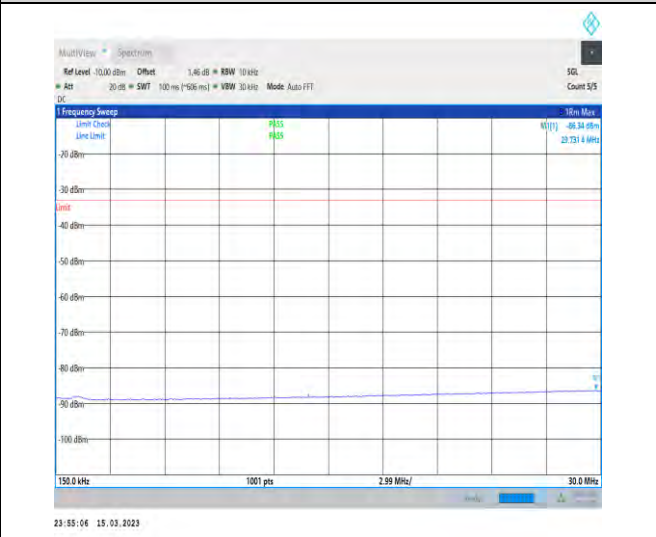
1-N70-PC3-15-15-M-1-DFT-PI2BPSK-Inner_1RB_Le
ft-1@1-1000-3000-Ant1-1750.50--50.18--13-PASS



1-N70-PC3-15-15-M-1-DFT-PI2BPSK-Inner_1RB_Le
ft-1@1-3000-18000-Ant1-6424.50--39.02--13-PASS



1-N70-PC3-15-15-H-1-DFT-PI2BPSK-Inner_1RB_Le
ft-1@1-0.009-0.15-Ant1-0.13--94.15--43-PASS

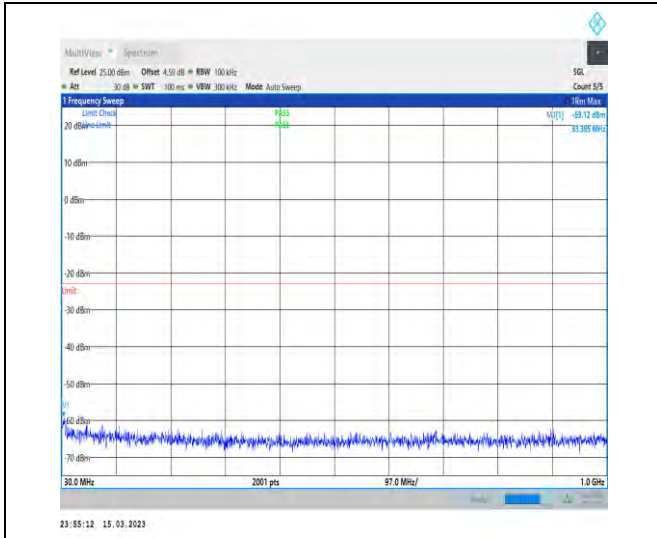


1-N70-PC3-15-15-H-1-DFT-PI2BPSK-Inner_1RB_Le
ft-1@1-0.15-30-Ant1-29.73--86.34--33-PASS

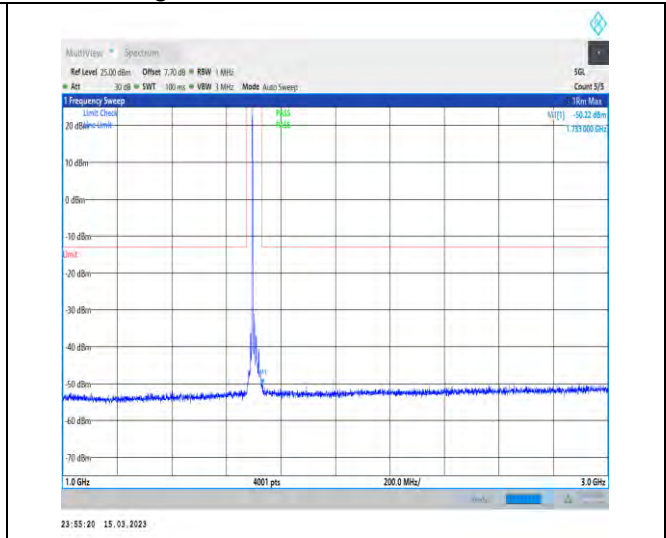


Unless otherwise agreed in writing, this document is issued by the Company subject to its General Conditions of Service printed overleaf, available on request or accessible at <http://www.sgs.com/en/Terms-and-Conditions.aspx> and, for electronic format documents, subject to Terms and Conditions for Electronic Documents at <http://www.sgs.com/en/Terms-and-Conditions/Terms-e-Documents.aspx>. Attention is drawn to the limitation of liability, indemnification and jurisdiction issues defined therein. Any holder of this document is advised that information contained hereon reflects the Company's findings at the time of its intervention only and within the limits of Client's instructions, if any. The Company's sole responsibility is to its Client and this document does not exonerate parties to a transaction from exercising all their rights and obligations under the transaction documents. This document cannot be reproduced except in full, without prior written approval of the Company. Any unauthorized alteration, forgery or falsification of the content or appearance of this document is unlawful and offenders may be prosecuted to the fullest extent of the law. Unless otherwise stated the results shown in this test report refer only to the sample(s) tested and such sample(s) are retained for 30 days only.

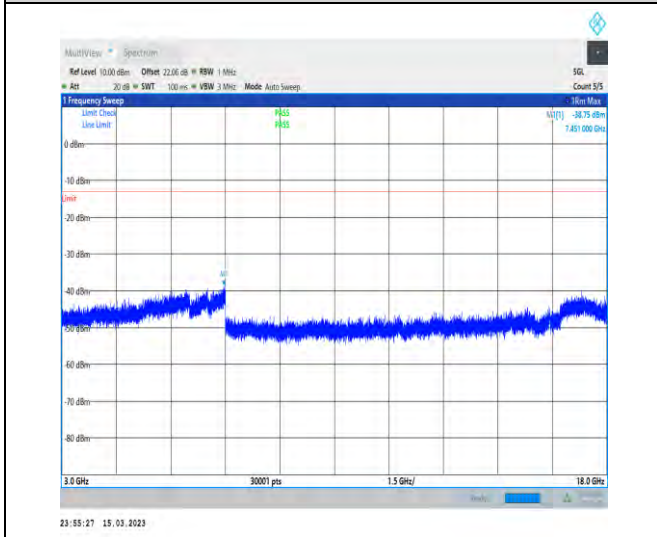
Attention: To check the authenticity of testing/inspection report & certificate, please contact us at telephone: (86-755) 8307 1443, or email: CN.Doccheck@sgs.com
 South of No. 6 Plant, No. 1, Runsheng Road, Suzhou Industrial Park, Suzhou Area, China (Jiangsu) Pilot Free Trade Zone 215000 t (86-512) 62992980 www.sgs.com.cn
 中国·苏州·中国(江苏)自由贸易试验区苏州片区苏州工业园区润胜路1号的6号厂房南楼 邮编: 215000 t (86-512) 62992980 sgs.china@sgs.com



1-N70-PC3-15-15-H-1-DFT-PI2BPSK-Inner_1RB_Le ft-1@1-30-1000-Ant1-33.40--59.12--23-PASS



1-N70-PC3-15-15-H-1-DFT-PI2BPSK-Inner_1RB_Le ft-1@1-1000-3000-Ant1-1733.00--50.22--13-PASS



1-N70-PC3-15-15-H-1-DFT-PI2BPSK-Inner_1RB_Le ft-1@1-3000-18000-Ant1-7451.00--38.75--13-PASS



Unless otherwise agreed in writing, this document is issued by the Company subject to its General Conditions of Service printed overleaf, available on request or accessible at <http://www.sgs.com/en/Terms-and-Conditions.aspx> and, for electronic format documents, subject to Terms and Conditions for Electronic Documents at <http://www.sgs.com/en/Terms-and-Conditions/Terms-e-Documents.aspx>. Attention is drawn to the limitation of liability, indemnification and jurisdiction issues defined therein. Any holder of this document is advised that information contained hereon reflects the Company's findings at the time of its intervention only and within the limits of Client's instructions, if any. The Company's sole responsibility is to its Client and this document does not exonerate parties to a transaction from exercising all their rights and obligations under the transaction documents. This document cannot be reproduced except in full, without prior written approval of the Company. Any unauthorized alteration, forgery or falsification of the content or appearance of this document is unlawful and offenders may be prosecuted to the fullest extent of the law. Unless otherwise stated the results shown in this test report refer only to the sample(s) tested and such sample(s) are retained for 30 days only.

Attention: To check the authenticity of testing/inspection report & certificate, please contact us at telephone: (86-755) 8307 1443, or email: CN.Doccheck@sgs.com
 South of No. 6 Plant, No. 1, Runsheng Road, Suzhou Industrial Park, Suzhou Area, China (Jiangsu) Pilot Free Trade Zone 215000 t (86-512) 62992980 www.sgs.com.cn
 中国·苏州·中国(江苏)自由贸易试验区苏州片区苏州工业园区润胜路1号的6号厂房南楼 邮编: 215000 t (86-512) 62992980 sgs.china@sgs.com

Field Strength of Spurious Radiation

Test Band = SA Band70_15MHz_TM1

Test Channel = Low

Final Data List										
NO.	Frequency [MHz]	Reading [dBμV]	Factor [dB]	AF[dB/m]	Level [dBm]	Limit [dBm]	Margin [dB]	Height [cm]	Angle [°]	Polarity
1	3971.25	42.58	-46.11	30.73	-68.06	-13.00	55.06	247	303	Horizontal
2	4843.5	43.28	-45.54	32.44	-65.07	-13.00	52.07	142	19	Horizontal
3	6192.75	40.93	-44.74	34.20	-64.87	-13.00	51.87	136	182	Horizontal
4	7205.25	40.12	-43.44	36.60	-61.98	-13.00	48.98	259	317	Horizontal
5	9434.25	36.85	-39.97	38.48	-59.90	-13.00	46.90	155	0	Horizontal
6	11212.5	33.44	-37.39	39.11	-60.10	-13.00	47.10	160	0	Horizontal

Final Data List										
NO.	Frequency [MHz]	Reading [dBμV]	Factor [dB]	AF[dB/m]	Level [dBm]	Limit [dBm]	Margin [dB]	Height [cm]	Angle [°]	Polarity
1	3788.25	42.42	-45.87	30.29	-68.42	-13.00	55.42	255	243	Vertical
2	4600.5	42.23	-45.67	31.71	-66.99	-13.00	53.99	174	0	Vertical
3	5999.25	41.37	-44.83	34.13	-64.59	-13.00	51.59	146	9	Vertical
4	7246.5	40.11	-43.57	36.57	-62.15	-13.00	49.15	198	257	Vertical
5	9862.5	35.12	-39.39	38.30	-61.22	-13.00	48.22	186	317	Vertical
6	11451	32.62	-37.34	39.05	-60.93	-13.00	47.93	253	151	Vertical



Unless otherwise agreed in writing, this document is issued by the Company subject to its General Conditions of Service printed overleaf, available on request or accessible at <http://www.sgs.com/en/Terms-and-Conditions.aspx> and, for electronic format documents, subject to Terms and Conditions for Electronic Documents at <http://www.sgs.com/en/Terms-and-Conditions/Terms-e-Documents.aspx>. Attention is drawn to the limitation of liability, indemnification and jurisdiction issues defined therein. Any holder of this document is advised that information contained hereon reflects the Company's findings at the time of its intervention only and within the limits of Client's instructions, if any. The Company's sole responsibility is to its Client and this document does not exonerate parties to a transaction from exercising all their rights and obligations under the transaction documents. This document cannot be reproduced except in full, without prior written approval of the Company. Any unauthorized alteration, forgery or falsification of the content or appearance of this document is unlawful and offenders may be prosecuted to the fullest extent of the law. Unless otherwise stated the results shown in this test report refer only to the sample(s) tested and such sample(s) are retained for 30 days only.

Attention: To check the authenticity of testing/inspection report & certificate, please contact us at telephone: (86-755) 8307 1443, or email: CN.Doccheck@sgs.com
 South of No. 6 Plant, No. 1, Runsheng Road, Suzhou Industrial Park, Suzhou Area, China (Jiangsu) Pilot Free Trade Zone 215000 t (86-512) 62992980 www.sgsgroup.com.cn
 中国·苏州·中国(江苏)自由贸易试验区苏州片区工业园区润胜路1号的6号厂房南楼 邮编: 215000 t (86-512) 62992980 sgs.china@sgs.com

Test Band = SA Band70_15MHz_TM1

Test Channel = Mid

Final Data List										
NO.	Frequency [MHz]	Reading [dBμV]	Factor [dB]	AF[dB/m]	Level [dBm]	Limit [dBm]	Margin [dB]	Height [cm]	Angle [°]	Polarity
1	3958.5	42.45	-46.14	30.70	-68.25	-13.00	55.25	211	300	Horizontal
2	5100	41.17	-45.37	32.94	-66.53	-13.00	53.53	154	61	Horizontal
3	6069.75	41.18	-44.56	34.15	-64.49	-13.00	51.49	169	181	Horizontal
4	7047.75	40.48	-43.87	36.20	-62.44	-13.00	49.44	125	195	Horizontal
5	9407.25	36.27	-39.86	38.49	-60.36	-13.00	47.36	183	61	Horizontal
6	11238	33.40	-37.40	39.11	-60.15	-13.00	47.15	217	8	Horizontal

Final Data List										
NO.	Frequency [MHz]	Reading [dBμV]	Factor [dB]	AF[dB/m]	Level [dBm]	Limit [dBm]	Margin [dB]	Height [cm]	Angle [°]	Polarity
1	3669	42.00	-45.70	29.86	-69.10	-13.00	56.10	126	135	Vertical
2	4843.5	44.74	-45.54	32.44	-63.61	-13.00	50.61	231	212	Vertical
3	6172.5	40.92	-44.67	34.19	-64.82	-13.00	51.82	148	286	Vertical
4	7433.25	40.75	-43.32	36.47	-61.36	-13.00	48.36	192	8	Vertical
5	9665.25	35.74	-39.52	38.37	-60.67	-13.00	47.67	140	0	Vertical
6	11597.25	31.91	-36.91	38.89	-61.37	-13.00	48.37	120	8	Vertical



Unless otherwise agreed in writing, this document is issued by the Company subject to its General Conditions of Service printed overleaf, available on request or accessible at <http://www.sgs.com/en/Terms-and-Conditions.aspx> and, for electronic format documents, subject to Terms and Conditions for Electronic Documents at <http://www.sgs.com/en/Terms-and-Conditions/Terms-e-Documents.aspx>. Attention is drawn to the limitation of liability, indemnification and jurisdiction issues defined therein. Any holder of this document is advised that information contained hereon reflects the Company's findings at the time of its intervention only and within the limits of Client's instructions, if any. The Company's sole responsibility is to its Client and this document does not exonerate parties to a transaction from exercising all their rights and obligations under the transaction documents. This document cannot be reproduced except in full, without prior written approval of the Company. Any unauthorized alteration, forgery or falsification of the content or appearance of this document is unlawful and offenders may be prosecuted to the fullest extent of the law. Unless otherwise stated the results shown in this test report refer only to the sample(s) tested and such sample(s) are retained for 30 days only.

Attention: To check the authenticity of testing/inspection report & certificate, please contact us at telephone: (86-755) 8307 1443, or email: CN.Doccheck@sgs.com
 South of No. 6 Plant, No. 1, Runsheng Road, Suzhou Industrial Park, Suzhou Area, China (Jiangsu) Pilot Free Trade Zone 215000 t (86-512) 62992980 www.sgs.com.cn
 中国·苏州·中国(江苏)自由贸易试验区苏州片区苏州工业园区润胜路1号的6号厂房南楼 邮编: 215000 t (86-512) 62992980 sgs.china@sgs.com

Test Band = SA Band70_15MHz_TM1

Test Channel = High

Final Data List										
NO.	Frequency [MHz]	Reading [dBμV]	Factor [dB]	AF[dB/m]	Level [dBm]	Limit [dBm]	Margin [dB]	Height [cm]	Angle [°]	Polarity
1	4584	42.19	-45.68	31.69	-67.05	-13.00	54.05	218	196	Horizontal
2	5759.25	40.89	-44.79	33.60	-65.56	-13.00	52.56	146	242	Horizontal
3	6825	40.76	-44.15	35.87	-62.78	-13.00	49.78	299	242	Horizontal
4	8796.75	37.83	-41.26	38.07	-60.62	-13.00	47.62	174	0	Horizontal
5	12930.75	32.35	-37.18	39.76	-60.33	-13.00	47.33	152	108	Horizontal
6	13368	31.38	-36.49	40.11	-60.26	-13.00	47.26	143	47	Horizontal

Final Data List										
NO.	Frequency [MHz]	Reading [dBμV]	Factor [dB]	AF[dB/m]	Level [dBm]	Limit [dBm]	Margin [dB]	Height [cm]	Angle [°]	Polarity
1	3745.5	42.31	-45.69	30.13	-68.51	-13.00	55.51	255	286	Vertical
2	5881.5	41.39	-44.93	33.90	-64.89	-13.00	51.89	184	196	Vertical
3	7859.25	39.62	-42.61	36.85	-61.40	-13.00	48.40	175	255	Vertical
4	10704.75	34.07	-37.91	39.14	-59.96	-13.00	46.96	163	315	Vertical
5	13324.5	31.57	-36.74	40.06	-60.37	-13.00	47.37	256	29	Vertical
6	14603.25	31.29	-35.27	39.94	-59.30	-13.00	46.30	133	105	Vertical

Remark:

1) The field strength is calculated by adding the Antenna Factor, Cable Factor & AMP. The basic equation with a sample calculation is as follows:

AF = Antenna Factor(dB/m)

Factor = Cable Factor(dB) - Preamplifier (dB)

Level = Reading Level + AF + Factor -95.26

Margin = Limit – Level



Unless otherwise agreed in writing, this document is issued by the Company subject to its General Conditions of Service printed overleaf, available on request or accessible at <http://www.sgs.com/en/Terms-and-Conditions.aspx> and, for electronic format documents, subject to Terms and Conditions for Electronic Documents at <http://www.sgs.com/en/Terms-and-Conditions/Terms-e-Documents.aspx>. Attention is drawn to the limitation of liability, indemnification and jurisdiction issues defined therein. Any holder of this document is advised that information contained hereon reflects the Company's findings at the time of its intervention only and within the limits of Client's instructions, if any. The Company's sole responsibility is to its Client and this document does not exonerate parties to a transaction from exercising all their rights and obligations under the transaction documents. This document cannot be reproduced except in full, without prior written approval of the Company. Any unauthorized alteration, forgery or falsification of the content or appearance of this document is unlawful and offenders may be prosecuted to the fullest extent of the law. Unless otherwise stated the results shown in this test report refer only to the sample(s) tested and such sample(s) are retained for 30 days only.

Attention: To check the authenticity of testing/inspection report & certificate, please contact us at telephone: (86-755) 8307 1443, or email: CN.Doccheck@sgs.com
 South of No. 6 Plant, No. 1, Runsheng Road, Suzhou Industrial Park, Suzhou Area, China (Jiangsu) Pilot Free Trade Zone 215000 t (86-512) 62992980 www.sgs.com.cn
 中国·苏州·中国(江苏)自由贸易试验区苏州片区苏州工业园区润胜路1号的6号厂房南楼 邮编: 215000 t (86-512) 62992980 sgs.china@sgs.com

Frequency Stability for SA

Test Result

Frequency Error VS. Voltage

Band	SCS	Bandwidth	Modulation	Channel	RB Config	Voltage	Temperature	Deviation(Hz)	Deviation (ppm)	Verdict
N70	15	15	DFT-PI2BPSK	M	Outer_Full	VH	NT	1.000000	0.000587	PASS
N70	15	15	DFT-PI2BPSK	M	Outer_Full	VN	NT	-0.600000	-0.000352	PASS
N70	15	15	DFT-PI2BPSK	M	Outer_Full	VL	NT	3.900000	0.002291	PASS
N70	15	15	CP-QPSK	M	Outer_Full	VH	NT	-2.500000	-0.001468	PASS
N70	15	15	CP-QPSK	M	Outer_Full	VN	NT	-3.100000	-0.001821	PASS
N70	15	15	CP-QPSK	M	Outer_Full	VL	NT	-1.400000	-0.000822	PASS

Frequency Error VS. Temperature

Band	SCS	Bandwidth	Modulation	Channel	RB Config	Voltage	Temperature	Deviation(Hz)	Deviation (ppm)	Verdict
N70	15	15	DFT-PI2BPSK	M	Outer_Full	NV	-30	0.700000	0.000411	PASS
N70	15	15	DFT-PI2BPSK	M	Outer_Full	NV	-20	4.700000	0.002761	PASS
N70	15	15	DFT-PI2BPSK	M	Outer_Full	NV	-10	2.800000	0.001645	PASS
N70	15	15	DFT-PI2BPSK	M	Outer_Full	NV	0	2.600000	0.001527	PASS
N70	15	15	DFT-PI2BPSK	M	Outer_Full	NV	10	1.800000	0.001057	PASS
N70	15	15	DFT-PI2BPSK	M	Outer_Full	NV	20	-2.200000	-0.001292	PASS
N70	15	15	DFT-PI2BPSK	M	Outer_Full	NV	30	-1.200000	-0.000705	PASS
N70	15	15	DFT-PI2BPSK	M	Outer_Full	NV	40	3.300000	0.001938	PASS
N70	15	15	DFT-PI2BPSK	M	Outer_Full	NV	50	1.700000	0.000999	PASS
N70	15	15	CP-QPSK	M	Outer_Full	NV	-30	-1.200000	-0.000705	PASS
N70	15	15	CP-QPSK	M	Outer_Full	NV	-20	-1.600000	-0.000940	PASS
N70	15	15	CP-QPSK	M	Outer_Full	NV	-10	-1.700000	-0.000999	PASS
N70	15	15	CP-QPSK	M	Outer_Full	NV	0	-3.400000	-0.001997	PASS
N70	15	15	CP-QPSK	M	Outer_Full	NV	10	-3.500000	-0.002056	PASS
N70	15	15	CP-QPSK	M	Outer_Full	NV	20	-4.000000	-0.002349	PASS
N70	15	15	CP-QPSK	M	Outer_Full	NV	30	-2.700000	-0.001586	PASS
N70	15	15	CP-QPSK	M	Outer_Full	NV	40	-3.700000	-0.002173	PASS
N70	15	15	CP-QPSK	M	Outer_Full	NV	50	-3.600000	-0.002115	PASS

---End of Attachment---



Unless otherwise agreed in writing, this document is issued by the Company subject to its General Conditions of Service printed overleaf, available on request or accessible at <http://www.sgs.com/en/Terms-and-Conditions.aspx> and, for electronic format documents, subject to Terms and Conditions for Electronic Documents at <http://www.sgs.com/en/Terms-and-Conditions/Terms-e-Documents.aspx>. Attention is drawn to the limitation of liability, indemnification and jurisdiction issues defined therein. Any holder of this document is advised that information contained hereon reflects the Company's findings at the time of its intervention only and within the limits of Client's instructions, if any. The Company's sole responsibility is to its Client and this document does not exonerate parties to a transaction from exercising all their rights and obligations under the transaction documents. This document cannot be reproduced except in full, without prior written approval of the Company. Any unauthorized alteration, forgery or falsification of the content or appearance of this document is unlawful and offenders may be prosecuted to the fullest extent of the law. Unless otherwise stated the results shown in this test report refer only to the sample(s) tested and such sample(s) are retained for 30 days only.

Attention: To check the authenticity of testing/inspection report & certificate, please contact us at telephone: (86-755) 8307 1443, or email: CN.Doccheck@sgs.com
 South of No. 6 Plant, No. 1, Runsheng Road, Suzhou Industrial Park, Suzhou Area, China (Jiangsu) Pilot Free Trade Zone 215000 t (86-512) 62992980 www.sgsgroup.com.cn
 中国·苏州·中国(江苏)自由贸易试验区苏州片区苏州工业园区润胜路1号的6号厂房南座 邮编: 215000 t (86-512) 62992980 sgs.china@sgs.com