



Appendix B.50

NR Band n48(3550-3700)



Unless otherwise agreed in writing, this document is issued by the Company subject to its General Conditions of Service printed overleaf, available on request or accessible at <http://www.sgs.com/en/Terms-and-Conditions.aspx> and, for electronic format documents, subject to Terms and Conditions for Electronic Documents at <http://www.sgs.com/en/Terms-and-Conditions/Terms-e-Documents.aspx>. Attention is drawn to the limitation of liability, indemnification and jurisdiction issues defined therein. Any holder of this document is advised that information contained hereon reflects the Company's findings at the time of its intervention only and within the limits of Client's instructions, if any. The Company's sole responsibility is to its Client and this document does not exonerate parties to a transaction from exercising all their rights and obligations under the transaction documents. This document cannot be reproduced except in full, without prior written approval of the Company. Any unauthorized alteration, forgery or falsification of the content or appearance of this document is unlawful and offenders may be prosecuted to the fullest extent of the law. Unless otherwise stated the results shown in this test report refer only to the sample(s) tested and such sample(s) are retained for 30 days only.
Attention: To check the authenticity of testing / inspection report & certificate, please contact us at telephone: (86-755) 8307 1443, or email: CN.Doccheck@sgs.com

Effective (Isotropic) Radiated Power Output Data for SA

Test Result

Band	SCS	Bandwidth	Modulation	Channel	RB Config	Power (dBm)	EIRP (dBm)	limit (dBm)	Verdict
N48	30	10	DFT-PI2BPSK	L	Inner_1RB_Left	21.63	17.34	23	PASS
N48	30	10	DFT-PI2BPSK	L	Inner_1RB_Right	21.8	17.51	23	PASS
N48	30	10	DFT-PI2BPSK	L	Outer_Full	21.27	16.98	23	PASS
N48	30	10	DFT-QPSK	L	Inner_1RB_Left	21.52	17.23	23	PASS
N48	30	10	DFT-QPSK	L	Inner_1RB_Right	21.79	17.5	23	PASS
N48	30	10	DFT-QPSK	L	Outer_Full	20.8	16.51	23	PASS
N48	30	10	DFT-16QAM	L	Inner_1RB_Left	20.66	16.37	23	PASS
N48	30	10	DFT-16QAM	L	Inner_1RB_Right	20.73	16.44	23	PASS
N48	30	10	DFT-16QAM	L	Outer_Full	19.78	15.49	23	PASS
N48	30	10	DFT-64QAM	L	Inner_1RB_Left	19.38	15.09	23	PASS
N48	30	10	DFT-64QAM	L	Inner_1RB_Right	19.42	15.13	23	PASS
N48	30	10	DFT-64QAM	L	Outer_Full	19.29	15	23	PASS
N48	30	10	DFT-256QAM	L	Inner_1RB_Left	17.41	13.12	23	PASS
N48	30	10	DFT-256QAM	L	Inner_1RB_Right	17.49	13.2	23	PASS
N48	30	10	DFT-256QAM	L	Outer_Full	17.52	13.23	23	PASS
N48	30	10	DFT-PI2BPSK	M	Inner_1RB_Left	21.3	17.01	23	PASS
N48	30	10	DFT-PI2BPSK	M	Inner_1RB_Right	21.82	17.53	23	PASS
N48	30	10	DFT-PI2BPSK	M	Outer_Full	21.26	16.97	23	PASS
N48	30	10	DFT-QPSK	M	Inner_1RB_Left	21.77	17.48	23	PASS
N48	30	10	DFT-QPSK	M	Inner_1RB_Right	21.78	17.49	23	PASS
N48	30	10	DFT-QPSK	M	Outer_Full	20.79	16.5	23	PASS
N48	30	10	DFT-16QAM	M	Inner_1RB_Left	20.76	16.47	23	PASS
N48	30	10	DFT-16QAM	M	Inner_1RB_Right	20.77	16.48	23	PASS
N48	30	10	DFT-16QAM	M	Outer_Full	19.81	15.52	23	PASS
N48	30	10	DFT-64QAM	M	Inner_1RB_Left	19.43	15.14	23	PASS
N48	30	10	DFT-64QAM	M	Inner_1RB_Right	19.43	15.14	23	PASS
N48	30	10	DFT-64QAM	M	Outer_Full	19.33	15.04	23	PASS
N48	30	10	DFT-256QAM	M	Inner_1RB_Left	17.52	13.23	23	PASS
N48	30	10	DFT-256QAM	M	Inner_1RB_Right	17.48	13.19	23	PASS



Unless otherwise agreed in writing, this document is issued by the Company subject to its General Conditions of Service printed overleaf, available on request or accessible at <http://www.sgs.com/en/Terms-and-Conditions.aspx> and, for electronic format documents, subject to Terms and Conditions for Electronic Documents at <http://www.sgs.com/en/Terms-and-Conditions/Terms-e-Documents.aspx>. Attention is drawn to the limitation of liability, indemnification and jurisdiction issues defined therein. Any holder of this document is advised that information contained hereon reflects the Company's findings at the time of its intervention only and within the limits of Client's instructions, if any. The Company's sole responsibility is to its Client and this document does not exonerate parties to a transaction from exercising all their rights and obligations under the transaction documents. This document cannot be reproduced except in full, without prior written approval of the Company. Any unauthorized alteration, forgery or falsification of the content or appearance of this document is unlawful and offenders may be prosecuted to the fullest extent of the law. Unless otherwise stated the results shown in this test report refer only to the sample(s) tested and such sample(s) are retained for 30 days only.

Attention: To check the authenticity of testing/inspection report & certificate, please contact us at telephone: (86-755) 8307 1443, or email: CN.Doccheck@sgs.com
 No.1 Workshop, M-10, Middle Section, Science & Technology Park, Shenzhen, China 518057 t (86-755) 26012053 f (86-755) 26710594 www.sgs.com.cn
 中国·深圳·科技园中区M-10栋一号厂房 邮编: 518057 t (86-755) 26012053 f (86-755) 26710594 sgs.china@sgs.com



N48	30	10	DFT-256QAM	M	Outer_Full	17.61	13.32	23	PASS
N48	30	10	DFT-PI2BPSK	H	Inner_1RB_Left	20.44	16.15	23	PASS
N48	30	10	DFT-PI2BPSK	H	Inner_1RB_Right	20.36	16.07	23	PASS
N48	30	10	DFT-PI2BPSK	H	Outer_Full	19.91	15.62	23	PASS
N48	30	10	DFT-QPSK	H	Inner_1RB_Left	20.45	16.16	23	PASS
N48	30	10	DFT-QPSK	H	Inner_1RB_Right	20.35	16.06	23	PASS
N48	30	10	DFT-QPSK	H	Outer_Full	21.12	16.83	23	PASS
N48	30	10	DFT-16QAM	H	Inner_1RB_Left	20.36	16.07	23	PASS
N48	30	10	DFT-16QAM	H	Inner_1RB_Right	20.32	16.03	23	PASS
N48	30	10	DFT-16QAM	H	Outer_Full	20.12	15.83	23	PASS
N48	30	10	DFT-64QAM	H	Inner_1RB_Left	19.52	15.23	23	PASS
N48	30	10	DFT-64QAM	H	Inner_1RB_Right	19.52	15.23	23	PASS
N48	30	10	DFT-64QAM	H	Outer_Full	19.36	15.07	23	PASS
N48	30	10	DFT-256QAM	H	Inner_1RB_Left	16.14	11.85	23	PASS
N48	30	10	DFT-256QAM	H	Inner_1RB_Right	16.06	11.77	23	PASS
N48	30	10	DFT-256QAM	H	Outer_Full	16.17	11.88	23	PASS
N48	30	20	DFT-PI2BPSK	L	Inner_1RB_Left	21.8	17.51	23	PASS
N48	30	20	DFT-PI2BPSK	L	Inner_1RB_Right	21.78	17.49	23	PASS
N48	30	20	DFT-PI2BPSK	L	Outer_Full	21.39	17.1	23	PASS
N48	30	20	DFT-QPSK	L	Inner_1RB_Left	21.78	17.49	23	PASS
N48	30	20	DFT-QPSK	L	Inner_1RB_Right	21.78	17.49	23	PASS
N48	30	20	DFT-QPSK	L	Outer_Full	20.91	16.62	23	PASS
N48	30	20	DFT-16QAM	L	Inner_1RB_Left	20.65	16.36	23	PASS
N48	30	20	DFT-16QAM	L	Inner_1RB_Right	20.65	16.36	23	PASS
N48	30	20	DFT-16QAM	L	Outer_Full	19.83	15.54	23	PASS
N48	30	20	DFT-64QAM	L	Inner_1RB_Left	19.37	15.08	23	PASS
N48	30	20	DFT-64QAM	L	Inner_1RB_Right	19.29	15	23	PASS
N48	30	20	DFT-64QAM	L	Outer_Full	19.28	14.99	23	PASS
N48	30	20	DFT-256QAM	L	Inner_1RB_Left	17.6	13.31	23	PASS
N48	30	20	DFT-256QAM	L	Inner_1RB_Right	17.56	13.27	23	PASS
N48	30	20	DFT-256QAM	L	Outer_Full	17.61	13.32	23	PASS
N48	30	20	DFT-PI2BPSK	M	Inner_1RB_Left	21.91	17.62	23	PASS
N48	30	20	DFT-PI2BPSK	M	Inner_1RB_Right	21.85	17.56	23	PASS
N48	30	20	DFT-PI2BPSK	M	Outer_Full	21.35	17.06	23	PASS



Unless otherwise agreed in writing, this document is issued by the Company subject to its General Conditions of Service printed overleaf, available on request or accessible at <http://www.sgs.com/en/Terms-and-Conditions.aspx> and, for electronic format documents, subject to Terms and Conditions for Electronic Documents at <http://www.sgs.com/en/Terms-and-Conditions/Terms-e-Documents.aspx>. Attention is drawn to the limitation of liability, indemnification and jurisdiction issues defined therein. Any holder of this document is advised that information contained hereon reflects the Company's findings at the time of its intervention only and within the limits of Client's instructions, if any. The Company's sole responsibility is to its Client and this document does not exonerate parties to a transaction from exercising all their rights and obligations under the transaction documents. This document cannot be reproduced except in full, without prior written approval of the Company. Any unauthorized alteration, forgery or falsification of the content or appearance of this document is unlawful and offenders may be prosecuted to the fullest extent of the law. Unless otherwise stated the results shown in this test report refer only to the sample(s) tested and such sample(s) are retained for 30 days only.
Attention: To check the authenticity of testing/inspection report & certificate, please contact us at telephone: (86-755) 8307 1443, or email: CN.Doccheck@sgs.com



N48	30	20	DFT-QPSK	M	Inner_1RB_Left	20.92	16.63	23	PASS
N48	30	20	DFT-QPSK	M	Inner_1RB_Right	21.81	17.52	23	PASS
N48	30	20	DFT-QPSK	M	Outer_Full	20.85	16.56	23	PASS
N48	30	20	DFT-16QAM	M	Inner_1RB_Left	20.91	16.62	23	PASS
N48	30	20	DFT-16QAM	M	Inner_1RB_Right	20.72	16.43	23	PASS
N48	30	20	DFT-16QAM	M	Outer_Full	19.83	15.54	23	PASS
N48	30	20	DFT-64QAM	M	Inner_1RB_Left	19.63	15.34	23	PASS
N48	30	20	DFT-64QAM	M	Inner_1RB_Right	19.46	15.17	23	PASS
N48	30	20	DFT-64QAM	M	Outer_Full	19.27	14.98	23	PASS
N48	30	20	DFT-256QAM	M	Inner_1RB_Left	17.64	13.35	23	PASS
N48	30	20	DFT-256QAM	M	Inner_1RB_Right	17.45	13.16	23	PASS
N48	30	20	DFT-256QAM	M	Outer_Full	17.64	13.35	23	PASS
N48	30	20	DFT-PI2BPSK	H	Inner_1RB_Left	21.63	17.34	23	PASS
N48	30	20	DFT-PI2BPSK	H	Inner_1RB_Right	21.25	16.96	23	PASS
N48	30	20	DFT-PI2BPSK	H	Outer_Full	21.23	16.94	23	PASS
N48	30	20	DFT-QPSK	H	Inner_1RB_Left	20.69	16.4	23	PASS
N48	30	20	DFT-QPSK	H	Inner_1RB_Right	20.47	16.18	23	PASS
N48	30	20	DFT-QPSK	H	Outer_Full	20.54	16.25	23	PASS
N48	30	20	DFT-16QAM	H	Inner_1RB_Left	19.56	15.27	23	PASS
N48	30	20	DFT-16QAM	H	Inner_1RB_Right	19.65	15.36	23	PASS
N48	30	20	DFT-16QAM	H	Outer_Full	19.52	15.23	23	PASS
N48	30	20	DFT-64QAM	H	Inner_1RB_Left	18.52	14.23	23	PASS
N48	30	20	DFT-64QAM	H	Inner_1RB_Right	18.63	14.34	23	PASS
N48	30	20	DFT-64QAM	H	Outer_Full	18.12	13.83	23	PASS
N48	30	20	DFT-256QAM	H	Inner_1RB_Left	17.63	13.34	23	PASS
N48	30	20	DFT-256QAM	H	Inner_1RB_Right	17.52	13.23	23	PASS
N48	30	20	DFT-256QAM	H	Outer_Full	17	12.71	23	PASS
N48	30	40	DFT-PI2BPSK	L	Inner_1RB_Left	21.95	17.66	23	PASS
N48	30	40	DFT-PI2BPSK	L	Inner_1RB_Right	21.59	17.3	23	PASS
N48	30	40	DFT-PI2BPSK	L	Outer_Full	21.28	16.99	23	PASS
N48	30	40	DFT-QPSK	L	Inner_1RB_Left	21.96	17.67	23	PASS
N48	30	40	DFT-QPSK	L	Inner_1RB_Right	21.59	17.3	23	PASS
N48	30	40	DFT-QPSK	L	Outer_Full	20.81	16.52	23	PASS
N48	30	40	DFT-16QAM	L	Inner_1RB_Left	20.93	16.64	23	PASS



Unless otherwise agreed in writing, this document is issued by the Company subject to its General Conditions of Service printed overleaf, available on request or accessible at <http://www.sgs.com/en/Terms-and-Conditions.aspx> and, for electronic format documents, subject to Terms and Conditions for Electronic Documents at <http://www.sgs.com/en/Terms-and-Conditions/Terms-e-Documents.aspx>. Attention is drawn to the limitation of liability, indemnification and jurisdiction issues defined therein. Any holder of this document is advised that information contained hereon reflects the Company's findings at the time of its intervention only and within the limits of Client's instructions, if any. The Company's sole responsibility is to its Client and this document does not exonerate parties to a transaction from exercising all their rights and obligations under the transaction documents. This document cannot be reproduced except in full, without prior written approval of the Company. Any unauthorized alteration, forgery or falsification of the content or appearance of this document is unlawful and offenders may be prosecuted to the fullest extent of the law. Unless otherwise stated the results shown in this test report refer only to the sample(s) tested and such sample(s) are retained for 30 days only.
Attention: To check the authenticity of testing/inspection report & certificate, please contact us at telephone: (86-755) 8307 1443, or email: CN.Doccheck@sgs.com



N48	30	40	DFT-16QAM	L	Inner_1RB_Right	20.54	16.25	23	PASS
N48	30	40	DFT-16QAM	L	Outer_Full	19.77	15.48	23	PASS
N48	30	40	DFT-64QAM	L	Inner_1RB_Left	19.63	15.34	23	PASS
N48	30	40	DFT-64QAM	L	Inner_1RB_Right	19.23	14.94	23	PASS
N48	30	40	DFT-64QAM	L	Outer_Full	19.3	15.01	23	PASS
N48	30	40	DFT-256QAM	L	Inner_1RB_Left	17.55	13.26	23	PASS
N48	30	40	DFT-256QAM	L	Inner_1RB_Right	17.15	12.86	23	PASS
N48	30	40	DFT-256QAM	L	Outer_Full	17.43	13.14	23	PASS
N48	30	40	DFT-PI2BPSK	M	Inner_1RB_Left	22.08	17.79	23	PASS
N48	30	40	DFT-PI2BPSK	M	Inner_1RB_Right	21.66	17.37	23	PASS
N48	30	40	DFT-PI2BPSK	M	Outer_Full	21.41	17.12	23	PASS
N48	30	40	DFT-QPSK	M	Inner_1RB_Left	22.02	17.73	23	PASS
N48	30	40	DFT-QPSK	M	Inner_1RB_Right	21.63	17.34	23	PASS
N48	30	40	DFT-QPSK	M	Outer_Full	20.89	16.6	23	PASS
N48	30	40	DFT-16QAM	M	Inner_1RB_Left	21.06	16.77	23	PASS
N48	30	40	DFT-16QAM	M	Inner_1RB_Right	20.62	16.33	23	PASS
N48	30	40	DFT-16QAM	M	Outer_Full	19.88	15.59	23	PASS
N48	30	40	DFT-64QAM	M	Inner_1RB_Left	19.72	15.43	23	PASS
N48	30	40	DFT-64QAM	M	Inner_1RB_Right	19.3	15.01	23	PASS
N48	30	40	DFT-64QAM	M	Outer_Full	19.36	15.07	23	PASS
N48	30	40	DFT-256QAM	M	Inner_1RB_Left	17.7	13.41	23	PASS
N48	30	40	DFT-256QAM	M	Inner_1RB_Right	17.12	12.83	23	PASS
N48	30	40	DFT-256QAM	M	Outer_Full	17.56	13.27	23	PASS
N48	30	40	DFT-PI2BPSK	H	Inner_1RB_Left	21.21	16.92	23	PASS
N48	30	40	DFT-PI2BPSK	H	Inner_1RB_Right	20.49	16.2	23	PASS
N48	30	40	DFT-PI2BPSK	H	Outer_Full	20.38	16.09	23	PASS
N48	30	40	DFT-QPSK	H	Inner_1RB_Left	20.12	15.83	23	PASS
N48	30	40	DFT-QPSK	H	Inner_1RB_Right	20.49	16.2	23	PASS
N48	30	40	DFT-QPSK	H	Outer_Full	19.9	15.61	23	PASS
N48	30	40	DFT-16QAM	H	Inner_1RB_Left	20.2	15.91	23	PASS
N48	30	40	DFT-16QAM	H	Inner_1RB_Right	19.49	15.2	23	PASS
N48	30	40	DFT-16QAM	H	Outer_Full	18.93	14.64	23	PASS
N48	30	40	DFT-64QAM	H	Inner_1RB_Left	18.93	14.64	23	PASS
N48	30	40	DFT-64QAM	H	Inner_1RB_Right	18.21	13.92	23	PASS



Unless otherwise agreed in writing, this document is issued by the Company subject to its General Conditions of Service printed overleaf, available on request or accessible at <http://www.sgs.com/en/Terms-and-Conditions.aspx> and, for electronic format documents, subject to Terms and Conditions for Electronic Documents at <http://www.sgs.com/en/Terms-and-Conditions/Terms-e-Documents.aspx>. Attention is drawn to the limitation of liability, indemnification and jurisdiction issues defined therein. Any holder of this document is advised that information contained hereon reflects the Company's findings at the time of its intervention only and within the limits of Client's instructions, if any. The Company's sole responsibility is to its Client and this document does not exonerate parties to a transaction from exercising all their rights and obligations under the transaction documents. This document cannot be reproduced except in full, without prior written approval of the Company. Any unauthorized alteration, forgery or falsification of the content or appearance of this document is unlawful and offenders may be prosecuted to the fullest extent of the law. Unless otherwise stated the results shown in this test report refer only to the sample(s) tested and such sample(s) are retained for 30 days only.
Attention: To check the authenticity of testing/inspection report & certificate, please contact us at telephone: (86-755) 8307 1443, or email: CN.Doccheck@sgs.com



N48	30	40	DFT-64QAM	H	Outer_Full	18.37	14.08	23	PASS
N48	30	40	DFT-256QAM	H	Inner_1RB_Left	16.74	12.45	23	PASS
N48	30	40	DFT-256QAM	H	Inner_1RB_Right	16.01	11.72	23	PASS
N48	30	40	DFT-256QAM	H	Outer_Full	16.5	12.21	23	PASS



Unless otherwise agreed in writing, this document is issued by the Company subject to its General Conditions of Service printed overleaf, available on request or accessible at <http://www.sgs.com/en/Terms-and-Conditions.aspx> and, for electronic format documents, subject to Terms and Conditions for Electronic Documents at <http://www.sgs.com/en/Terms-and-Conditions/Terms-e-Documents.aspx>. Attention is drawn to the limitation of liability, indemnification and jurisdiction issues defined therein. Any holder of this document is advised that information contained hereon reflects the Company's findings at the time of its intervention only and within the limits of Client's instructions, if any. The Company's sole responsibility is to its Client and this document does not exonerate parties to a transaction from exercising all their rights and obligations under the transaction documents. This document cannot be reproduced except in full, without prior written approval of the Company. Any unauthorized alteration, forgery or falsification of the content or appearance of this document is unlawful and offenders may be prosecuted to the fullest extent of the law. Unless otherwise stated the results shown in this test report refer only to the sample(s) tested and such sample(s) are retained for 30 days only.
Attention: To check the authenticity of testing / inspection report & certificate, please contact us at telephone: (86-755) 8307 1443, or email: CN.Doccheck@sgs.com

Effective (Isotropic) Radiated Power Output Data for MIMO

Test Result

Band	SCS	Bandwidth	Modulation	Channel	RB Config	Power Ant1	Power Ant2	Total Power	ERIP	LIMIT	Verdict
N48	30	10	CP-QPSK	L	Inner_1RB_Left	18.56	17.65	21.14	16.85	23	PASS
N48	30	10	CP-QPSK	L	Inner_1RB_Right	18.55	17.55	21.09	16.80	23	PASS
N48	30	10	CP-QPSK	L	Outer_Full	17.26	16.43	19.88	15.59	23	PASS
N48	30	10	CP-16QAM	L	Inner_1RB_Left	17.99	17.54	20.78	16.49	23	PASS
N48	30	10	CP-16QAM	L	Inner_1RB_Right	18.02	17.39	20.73	16.44	23	PASS
N48	30	10	CP-16QAM	L	Outer_Full	17.29	16.46	19.91	15.62	23	PASS
N48	30	10	CP-64QAM	L	Inner_1RB_Left	16.48	15.76	19.15	14.86	23	PASS
N48	30	10	CP-64QAM	L	Inner_1RB_Right	16.48	15.71	19.12	14.83	23	PASS
N48	30	10	CP-64QAM	L	Outer_Full	16.72	15.84	19.31	15.02	23	PASS
N48	30	10	CP-256QAM	L	Inner_1RB_Left	13.78	12.73	16.30	12.01	23	PASS
N48	30	10	CP-256QAM	L	Inner_1RB_Right	13.77	12.67	16.27	11.98	23	PASS
N48	30	10	CP-256QAM	L	Outer_Full	13.72	12.83	16.31	12.02	23	PASS
N48	30	10	CP-QPSK	M	Inner_1RB_Left	18.89	17.82	21.40	17.11	23	PASS
N48	30	10	CP-QPSK	M	Inner_1RB_Right	18.74	17.85	21.33	17.04	23	PASS
N48	30	10	CP-QPSK	M	Outer_Full	17.46	16.5	20.02	15.73	23	PASS
N48	30	10	CP-16QAM	M	Inner_1RB_Left	18.29	17.53	20.94	16.65	23	PASS
N48	30	10	CP-16QAM	M	Inner_1RB_Right	18.2	17.69	20.96	16.67	23	PASS
N48	30	10	CP-16QAM	M	Outer_Full	17.44	16.55	20.03	15.74	23	PASS
N48	30	10	CP-64QAM	M	Inner_1RB_Left	16.68	15.69	19.22	14.93	23	PASS
N48	30	10	CP-64QAM	M	Inner_1RB_Right	16.59	15.89	19.26	14.97	23	PASS
N48	30	10	CP-64QAM	M	Outer_Full	16.95	16.01	19.52	15.23	23	PASS
N48	30	10	CP-256QAM	M	Inner_1RB_Left	13.96	12.81	16.43	12.14	23	PASS
N48	30	10	CP-256QAM	M	Inner_1RB_Right	13.97	12.93	16.49	12.20	23	PASS
N48	30	10	CP-256QAM	M	Outer_Full	13.94	13.06	16.53	12.24	23	PASS
N48	30	10	CP-QPSK	H	Inner_1RB_Left	13.8	13.06	16.46	12.17	23	PASS
N48	30	10	CP-QPSK	H	Inner_1RB_Right	13.85	12.97	16.44	12.15	23	PASS
N48	30	10	CP-QPSK	H	Outer_Full	14.13	13.26	16.73	12.44	23	PASS



Unless otherwise agreed in writing, this document is issued by the Company subject to its General Conditions of Service printed overleaf, available on request or accessible at <http://www.sgs.com/en/Terms-and-Conditions.aspx> and, for electronic format documents, subject to Terms and Conditions for Electronic Documents at <http://www.sgs.com/en/Terms-and-Conditions/Terms-e-Document.aspx>. Attention is drawn to the limitation of liability, indemnification and jurisdiction issues defined therein. Any holder of this document is advised that information contained hereon reflects the Company's findings at the time of its intervention only and within the limits of Client's instructions, if any. The Company's sole responsibility is to its Client and this document does not exonerate parties to a transaction from exercising all their rights and obligations under the transaction documents. This document cannot be reproduced except in full, without prior written approval of the Company. Any unauthorized alteration, forgery or falsification of the content or appearance of this document is unlawful and offenders may be prosecuted to the fullest extent of the law. Unless otherwise stated the results shown in this test report refer only to the sample(s) tested and such sample(s) are retained for 30 days only.

Attention: To check the authenticity of testing/inspection report & certificate, please contact us at telephone: (86-755) 8307 1443, or email: CN.Doccheck@sgs.com
 No.1 Workshop, M-10, Middle Section, Science & Technology Park, Shenzhen, China 518057 t (86-755) 26012053 f (86-755) 26710594 www.sgs.com.cn
 中国·深圳·科技园中区M-10栋一号厂房 邮编: 518057 t (86-755) 26012053 f (86-755) 26710594 sgs.china@sgs.com



N48	30	10	CP-16QAM	H	Inner_1RB_Left	13.56	13.31	16.45	12.16	23	PASS
N48	30	10	CP-16QAM	H	Inner_1RB_Right	13.57	13.24	16.42	12.13	23	PASS
N48	30	10	CP-16QAM	H	Outer_Full	14.13	13.36	16.77	12.48	23	PASS
N48	30	10	CP-64QAM	H	Inner_1RB_Left	13.63	13.01	16.34	12.05	23	PASS
N48	30	10	CP-64QAM	H	Inner_1RB_Right	13.7	12.93	16.34	12.05	23	PASS
N48	30	10	CP-64QAM	H	Outer_Full	14.17	13.27	16.75	12.46	23	PASS
N48	30	10	CP-256QAM	H	Inner_1RB_Left	13.71	12.62	16.21	11.92	23	PASS
N48	30	10	CP-256QAM	H	Inner_1RB_Right	13.71	12.66	16.23	11.94	23	PASS
N48	30	10	CP-256QAM	H	Outer_Full	13.64	12.79	16.25	11.96	23	PASS
N48	30	20	CP-QPSK	L	Inner_1RB_Left	18.73	17.92	21.35	17.06	23	PASS
N48	30	20	CP-QPSK	L	Inner_1RB_Right	18.76	17.86	21.34	17.05	23	PASS
N48	30	20	CP-QPSK	L	Outer_Full	17.34	16.36	19.89	15.60	23	PASS
N48	30	20	CP-16QAM	L	Inner_1RB_Left	18.17	17.61	20.91	16.62	23	PASS
N48	30	20	CP-16QAM	L	Inner_1RB_Right	18.04	17.68	20.87	16.58	23	PASS
N48	30	20	CP-16QAM	L	Outer_Full	17.39	16.37	19.92	15.63	23	PASS
N48	30	20	CP-64QAM	L	Inner_1RB_Left	16.53	15.91	19.24	14.95	23	PASS
N48	30	20	CP-64QAM	L	Inner_1RB_Right	16.54	15.85	19.22	14.93	23	PASS
N48	30	20	CP-64QAM	L	Outer_Full	16.82	15.84	19.37	15.08	23	PASS
N48	30	20	CP-256QAM	L	Inner_1RB_Left	13.83	12.83	16.37	12.08	23	PASS
N48	30	20	CP-256QAM	L	Inner_1RB_Right	13.89	12.83	16.40	12.11	23	PASS
N48	30	20	CP-256QAM	L	Outer_Full	13.86	12.94	16.43	12.14	23	PASS
N48	30	20	CP-QPSK	M	Inner_1RB_Left	18.94	17.72	21.38	17.09	23	PASS
N48	30	20	CP-QPSK	M	Inner_1RB_Right	18.71	17.71	21.25	16.96	23	PASS
N48	30	20	CP-QPSK	M	Outer_Full	17.42	16.45	19.97	15.68	23	PASS
N48	30	20	CP-16QAM	M	Inner_1RB_Left	18.31	17.53	20.95	16.66	23	PASS
N48	30	20	CP-16QAM	M	Inner_1RB_Right	18.16	17.49	20.85	16.56	23	PASS
N48	30	20	CP-16QAM	M	Outer_Full	17.49	16.47	20.02	15.73	23	PASS
N48	30	20	CP-64QAM	M	Inner_1RB_Left	16.77	15.7	19.28	14.99	23	PASS
N48	30	20	CP-64QAM	M	Inner_1RB_Right	16.58	15.78	19.21	14.92	23	PASS
N48	30	20	CP-64QAM	M	Outer_Full	16.9	15.97	19.47	15.18	23	PASS
N48	30	20	CP-256QAM	M	Inner_1RB_Left	14.08	12.66	16.44	12.15	23	PASS
N48	30	20	CP-256QAM	M	Inner_1RB_Right	13.85	12.69	16.32	12.03	23	PASS
N48	30	20	CP-256QAM	M	Outer_Full	14.01	13.03	16.56	12.27	23	PASS
N48	30	20	CP-QPSK	H	Inner_1RB_Left	13.57	13.07	16.34	12.05	23	PASS



Unless otherwise agreed in writing, this document is issued by the Company subject to its General Conditions of Service printed overleaf, available on request or accessible at <http://www.sgs.com/en/Terms-and-Conditions.aspx> and, for electronic format documents, subject to Terms and Conditions for Electronic Documents at <http://www.sgs.com/en/Terms-and-Conditions/Terms-e-Documents.aspx>. Attention is drawn to the limitation of liability, indemnification and jurisdiction issues defined therein. Any holder of this document is advised that information contained hereon reflects the Company's findings at the time of its intervention only and within the limits of Client's instructions, if any. The Company's sole responsibility is to its Client and this document does not exonerate parties to a transaction from exercising all their rights and obligations under the transaction documents. This document cannot be reproduced except in full, without prior written approval of the Company. Any unauthorized alteration, forgery or falsification of the content or appearance of this document is unlawful and offenders may be prosecuted to the fullest extent of the law. Unless otherwise stated the results shown in this test report refer only to the sample(s) tested and such sample(s) are retained for 30 days only.

Attention: To check the authenticity of testing/inspection report & certificate, please contact us at telephone: (86-755) 8307 1443, or email: CN.Doccheck@sgs.com



N48	30	20	CP-QPSK	H	Inner_1RB_Right	13.92	13.04	16.51	12.22	23	PASS
N48	30	20	CP-QPSK	H	Outer_Full	14.06	13.54	16.82	12.53	23	PASS
N48	30	20	CP-16QAM	H	Inner_1RB_Left	13.67	13.15	16.43	12.14	23	PASS
N48	30	20	CP-16QAM	H	Inner_1RB_Right	13.82	12.92	16.40	12.11	23	PASS
N48	30	20	CP-16QAM	H	Outer_Full	14.13	13.5	16.84	12.55	23	PASS
N48	30	20	CP-64QAM	H	Inner_1RB_Left	13.5	13.51	16.52	12.23	23	PASS
N48	30	20	CP-64QAM	H	Inner_1RB_Right	13.64	13.07	16.37	12.08	23	PASS
N48	30	20	CP-64QAM	H	Outer_Full	14.02	13.34	16.70	12.41	23	PASS
N48	30	20	CP-256QAM	H	Inner_1RB_Left	13.61	12.79	16.23	11.94	23	PASS
N48	30	20	CP-256QAM	H	Inner_1RB_Right	13.8	12.59	16.25	11.96	23	PASS
N48	30	20	CP-256QAM	H	Outer_Full	13.71	12.91	16.34	12.05	23	PASS
N48	30	40	CP-QPSK	L	Inner_1RB_Left	18.81	17.79	21.34	17.05	23	PASS
N48	30	40	CP-QPSK	L	Inner_1RB_Right	18.56	17.56	21.10	16.81	23	PASS
N48	30	40	CP-QPSK	L	Outer_Full	17.17	16.32	19.78	15.49	23	PASS
N48	30	40	CP-16QAM	L	Inner_1RB_Left	18.09	17.44	20.79	16.50	23	PASS
N48	30	40	CP-16QAM	L	Inner_1RB_Right	17.9	17.36	20.65	16.36	23	PASS
N48	30	40	CP-16QAM	L	Outer_Full	17.23	16.36	19.83	15.54	23	PASS
N48	30	40	CP-64QAM	L	Inner_1RB_Left	16.58	15.72	19.18	14.89	23	PASS
N48	30	40	CP-64QAM	L	Inner_1RB_Right	16.31	15.63	18.99	14.70	23	PASS
N48	30	40	CP-64QAM	L	Outer_Full	16.6	15.82	19.24	14.95	23	PASS
N48	30	40	CP-256QAM	L	Inner_1RB_Left	13.91	12.67	16.34	12.05	23	PASS
N48	30	40	CP-256QAM	L	Inner_1RB_Right	13.59	12.54	16.11	11.82	23	PASS
N48	30	40	CP-256QAM	L	Outer_Full	13.73	12.8	16.30	12.01	23	PASS
N48	30	40	CP-QPSK	M	Inner_1RB_Left	19	17.55	21.35	17.06	23	PASS
N48	30	40	CP-QPSK	M	Inner_1RB_Right	18.57	17.14	20.92	16.63	23	PASS
N48	30	40	CP-QPSK	M	Outer_Full	17.37	16.15	19.81	15.52	23	PASS
N48	30	40	CP-16QAM	M	Inner_1RB_Left	18.3	17.32	20.85	16.56	23	PASS
N48	30	40	CP-16QAM	M	Inner_1RB_Right	17.98	16.97	20.51	16.22	23	PASS
N48	30	40	CP-16QAM	M	Outer_Full	17.39	16.12	19.81	15.52	23	PASS
N48	30	40	CP-64QAM	M	Inner_1RB_Left	16.77	15.61	19.24	14.95	23	PASS
N48	30	40	CP-64QAM	M	Inner_1RB_Right	16.4	15.17	18.84	14.55	23	PASS
N48	30	40	CP-64QAM	M	Outer_Full	16.79	15.71	19.29	15.00	23	PASS
N48	30	40	CP-256QAM	M	Inner_1RB_Left	14.01	12.57	16.36	12.07	23	PASS
N48	30	40	CP-256QAM	M	Inner_1RB_Right	13.64	12.13	15.96	11.67	23	PASS



Unless otherwise agreed in writing, this document is issued by the Company subject to its General Conditions of Service printed overleaf, available on request or accessible at <http://www.sgs.com/en/Terms-and-Conditions.aspx> and, for electronic format documents, subject to Terms and Conditions for Electronic Documents at <http://www.sgs.com/en/Terms-and-Conditions/Terms-e-Documents.aspx>. Attention is drawn to the limitation of liability, indemnification and jurisdiction issues defined therein. Any holder of this document is advised that information contained hereon reflects the Company's findings at the time of its intervention only and within the limits of Client's instructions, if any. The Company's sole responsibility is to its Client and this document does not exonerate parties to a transaction from exercising all their rights and obligations under the transaction documents. This document cannot be reproduced except in full, without prior written approval of the Company. Any unauthorized alteration, forgery or falsification of the content or appearance of this document is unlawful and offenders may be prosecuted to the fullest extent of the law. Unless otherwise stated the results shown in this test report refer only to the sample(s) tested and such sample(s) are retained for 30 days only.

Attention: To check the authenticity of testing/inspection report & certificate, please contact us at telephone: (86-755) 8307 1443, or email: CN.Doccheck@sgs.com



N48	30	40	CP-256QAM	M	Outer_Full	13.87	12.69	16.33	12.04	23	PASS
N48	30	40	CP-QPSK	H	Inner_1RB_Left	14.09	13.2	16.68	12.39	23	PASS
N48	30	40	CP-QPSK	H	Inner_1RB_Right	14.16	12.82	16.55	12.26	23	PASS
N48	30	40	CP-QPSK	H	Outer_Full	14	13.26	16.66	12.37	23	PASS
N48	30	40	CP-16QAM	H	Inner_1RB_Left	13.53	13.46	16.51	12.22	23	PASS
N48	30	40	CP-16QAM	H	Inner_1RB_Right	13.69	13.19	16.46	12.17	23	PASS
N48	30	40	CP-16QAM	H	Outer_Full	14.06	13.35	16.73	12.44	23	PASS
N48	30	40	CP-64QAM	H	Inner_1RB_Left	13.59	13.03	16.33	12.04	23	PASS
N48	30	40	CP-64QAM	H	Inner_1RB_Right	13.61	12.81	16.24	11.95	23	PASS
N48	30	40	CP-64QAM	H	Outer_Full	13.97	13.35	16.68	12.39	23	PASS
N48	30	40	CP-256QAM	H	Inner_1RB_Left	13.54	12.65	16.13	11.84	23	PASS
N48	30	40	CP-256QAM	H	Inner_1RB_Right	13.65	12.43	16.09	11.80	23	PASS
N48	30	40	CP-256QAM	H	Outer_Full	13.61	12.83	16.25	11.96	23	PASS



Unless otherwise agreed in writing, this document is issued by the Company subject to its General Conditions of Service printed overleaf, available on request or accessible at <http://www.sgs.com/en/Terms-and-Conditions.aspx> and, for electronic format documents, subject to Terms and Conditions for Electronic Documents at <http://www.sgs.com/en/Terms-and-Conditions/Terms-e-Documents.aspx>. Attention is drawn to the limitation of liability, indemnification and jurisdiction issues defined therein. Any holder of this document is advised that information contained hereon reflects the Company's findings at the time of its intervention only and within the limits of Client's instructions, if any. The Company's sole responsibility is to its Client and this document does not exonerate parties to a transaction from exercising all their rights and obligations under the transaction documents. This document cannot be reproduced except in full, without prior written approval of the Company. Any unauthorized alteration, forgery or falsification of the content or appearance of this document is unlawful and offenders may be prosecuted to the fullest extent of the law. Unless otherwise stated the results shown in this test report refer only to the sample(s) tested and such sample(s) are retained for 30 days only.
Attention: To check the authenticity of testing / inspection report & certificate, please contact us at telephone: (86-755) 8307 1443, or email: CN.Doccheck@sgs.com

Peak-to-Average Ratio for SA

Peak-to-Average Ratio(PAPR)

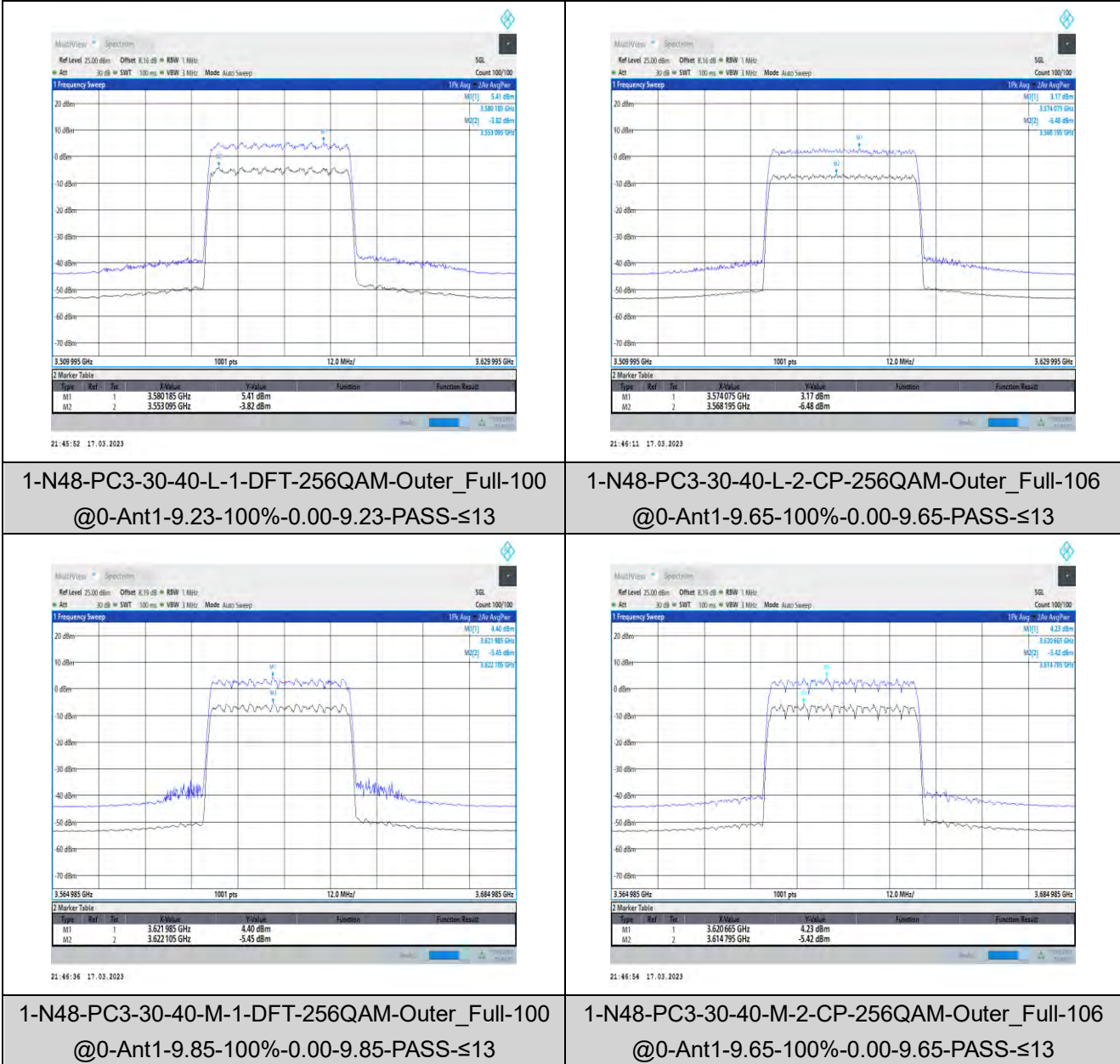
Test Result

Band	SCS	Bandwidth	Modulation	Channel	RB Config	DutyCycle	Factor	Result	Limit	Verdict
N48	30	40	DFT-256QAM	L	Outer_Full	100%	0.00	9.23	≤13	PASS
N48	30	40	CP-256QAM	L	Outer_Full	100%	0.00	9.65	≤13	PASS
N48	30	40	DFT-256QAM	M	Outer_Full	100%	0.00	9.85	≤13	PASS
N48	30	40	CP-256QAM	M	Outer_Full	100%	0.00	9.65	≤13	PASS
N48	30	40	DFT-256QAM	H	Outer_Full	100%	0.00	9.36	≤13	PASS
N48	30	40	CP-256QAM	H	Outer_Full	100%	0.00	9.63	≤13	PASS



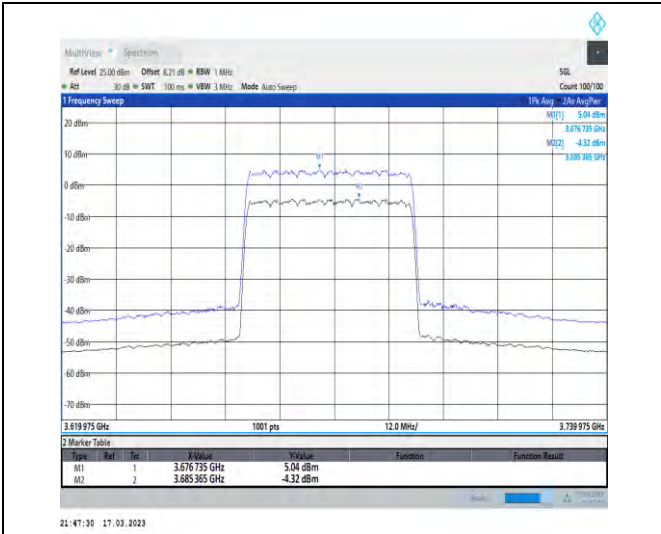
Unless otherwise agreed in writing, this document is issued by the Company subject to its General Conditions of Service printed overleaf, available on request or accessible at <http://www.sgs.com/en/Terms-and-Conditions.aspx> and, for electronic format documents, subject to Terms and Conditions for Electronic Documents at <http://www.sgs.com/en/Terms-and-Conditions/Terms-e-Documents.aspx>. Attention is drawn to the limitation of liability, indemnification and jurisdiction issues defined therein. Any holder of this document is advised that information contained hereon reflects the Company's findings at the time of its intervention only and within the limits of Client's instructions, if any. The Company's sole responsibility is to its Client and this document does not exonerate parties to a transaction from exercising all their rights and obligations under the transaction documents. This document cannot be reproduced except in full, without prior written approval of the Company. Any unauthorized alteration, forgery or falsification of the content or appearance of this document is unlawful and offenders may be prosecuted to the fullest extent of the law. Unless otherwise stated the results shown in this test report refer only to the sample(s) tested and such sample(s) are retained for 30 days only.
Attention: To check the authenticity of testing / inspection report & certificate, please contact us at telephone: (86-755) 8307 1443, or email: CN.Doccheck@sgs.com

Test Graphs

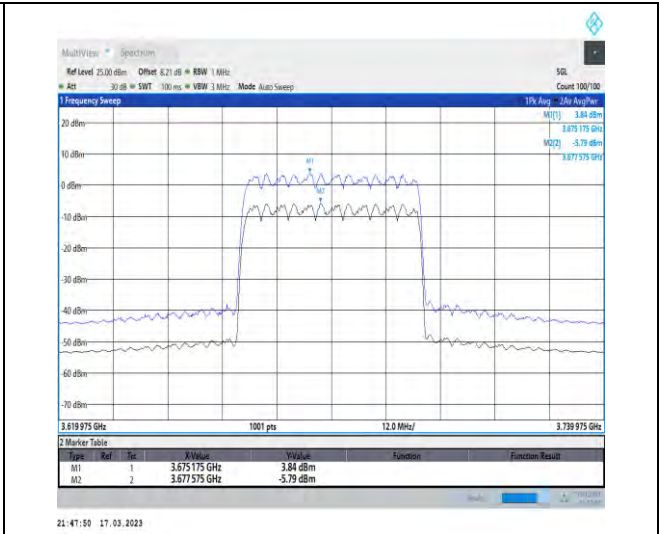


Unless otherwise agreed in writing, this document is issued by the Company subject to its General Conditions of Service printed overleaf, available on request or accessible at <http://www.sgs.com/en/Terms-and-Conditions.aspx> and, for electronic format documents, subject to Terms and Conditions for Electronic Documents at <http://www.sgs.com/en/Terms-and-Conditions/Terms-e-Documents.aspx>. Attention is drawn to the limitation of liability, indemnification and jurisdiction issues defined therein. Any holder of this document is advised that information contained hereon reflects the Company's findings at the time of its intervention only and within the limits of Client's instructions, if any. The Company's sole responsibility is to its Client and this document does not exonerate parties to a transaction from exercising all their rights and obligations under the transaction documents. This document cannot be reproduced except in full, without prior written approval of the Company. Any unauthorized alteration, forgery or falsification of the content or appearance of this document is unlawful and offenders may be prosecuted to the fullest extent of the law. Unless otherwise stated the results shown in this test report refer only to the sample(s) tested and such sample(s) are retained for 30 days only.
Attention: To check the authenticity of testing/inspection report & certificate, please contact us at telephone: (86-755) 8307 1443, or email: CN.Doccheck@sgs.com

No.1 Workshop, M-10, Middle Section, Science & Technology Park, Shenzhen, China 518057 t (86-755) 26012053 f (86-755) 26710594 www.sgs.com.cn
 中国·深圳·科技园中区M-10栋一号厂房 邮编: 518057 t (86-755) 26012053 f (86-755) 26710594 sgs.china@sgs.com



1-N48-PC3-30-40-H-1-DFT-256QAM-Outer_Full-100
@0-Ant1-9.36-100%-0.00-9.36-PASS-≤13



1-N48-PC3-30-40-H-2-CP-256QAM-Outer_Full-106
@0-Ant1-9.63-100%-0.00-9.63-PASS-≤13



Unless otherwise agreed in writing, this document is issued by the Company subject to its General Conditions of Service printed overleaf, available on request or accessible at <http://www.sgs.com/en/Terms-and-Conditions.aspx> and, for electronic format documents, subject to Terms and Conditions for Electronic Documents at <http://www.sgs.com/en/Terms-and-Conditions/Terms-e-Documents.aspx>. Attention is drawn to the limitation of liability, indemnification and jurisdiction issues defined therein. Any holder of this document is advised that information contained hereon reflects the Company's findings at the time of its intervention only and within the limits of Client's instructions, if any. The Company's sole responsibility is to its Client and this document does not exonerate parties to a transaction from exercising all their rights and obligations under the transaction documents. This document cannot be reproduced except in full, without prior written approval of the Company. Any unauthorized alteration, forgery or falsification of the content or appearance of this document is unlawful and offenders may be prosecuted to the fullest extent of the law. Unless otherwise stated the results shown in this test report refer only to the sample(s) tested and such sample(s) are retained for 30 days only.
Attention: To check the authenticity of testing/inspection report & certificate, please contact us at telephone: (86-755) 83071443, or email: CN.Doccheck@sgs.com

Modulation characteristics for SA

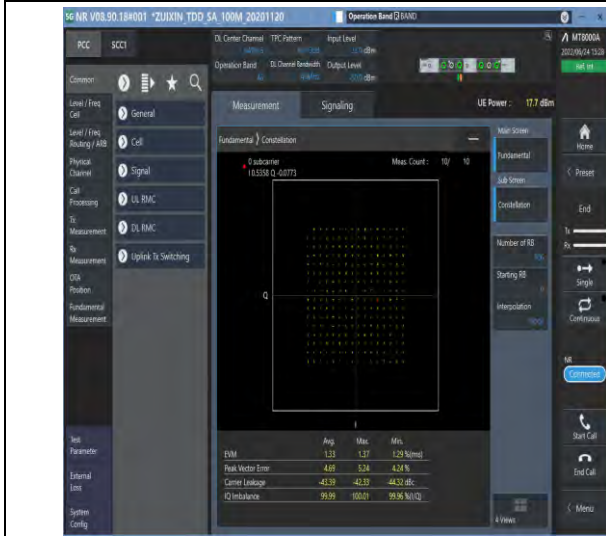
Test Result

Band	SCS	Bandwidth	Modulation	Channel	RB Config	Result	Verdict
N48	30	40	DFT-PI2BPSK	M	Outer_Full	see graph	PASS
N48	30	40	DFT-QPSK	M	Outer_Full	see graph	PASS
N48	30	40	DFT-16QAM	M	Outer_Full	see graph	PASS
N48	30	40	DFT-64QAM	M	Outer_Full	see graph	PASS
N48	30	40	DFT-256QAM	M	Outer_Full	see graph	PASS
N48	30	40	CP-QPSK	M	Outer_Full	see graph	PASS
N48	30	40	CP-16QAM	M	Outer_Full	see graph	PASS
N48	30	40	CP-64QAM	M	Outer_Full	see graph	PASS
N48	30	40	CP-256QAM	M	Outer_Full	see graph	PASS

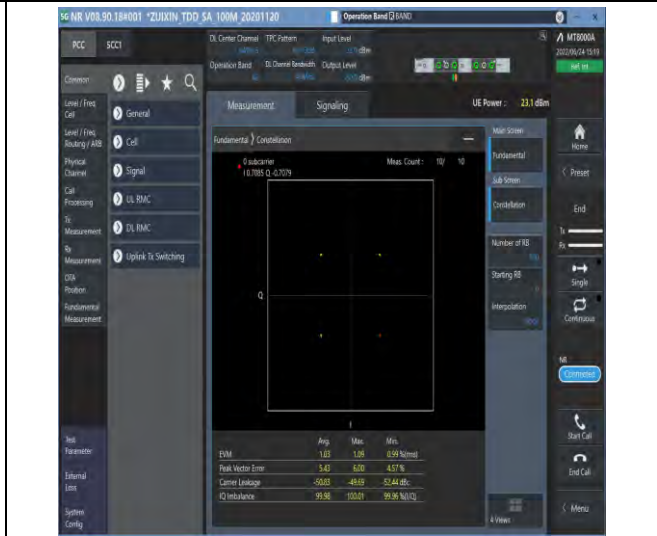


Unless otherwise agreed in writing, this document is issued by the Company subject to its General Conditions of Service printed overleaf, available on request or accessible at <http://www.sgs.com/en/Terms-and-Conditions.aspx> and, for electronic format documents, subject to Terms and Conditions for Electronic Documents at <http://www.sgs.com/en/Terms-and-Conditions/Terms-e-Documents.aspx>. Attention is drawn to the limitation of liability, indemnification and jurisdiction issues defined therein. Any holder of this document is advised that information contained hereon reflects the Company's findings at the time of its intervention only and within the limits of Client's instructions, if any. The Company's sole responsibility is to its Client and this document does not exonerate parties to a transaction from exercising all their rights and obligations under the transaction documents. This document cannot be reproduced except in full, without prior written approval of the Company. Any unauthorized alteration, forgery or falsification of the content or appearance of this document is unlawful and offenders may be prosecuted to the fullest extent of the law. Unless otherwise stated the results shown in this test report refer only to the sample(s) tested and such sample(s) are retained for 30 days only.
Attention: To check the authenticity of testing / inspection report & certificate, please contact us at telephone: (86-755) 8307 1443, or email: CN.Doccheck@sgs.com

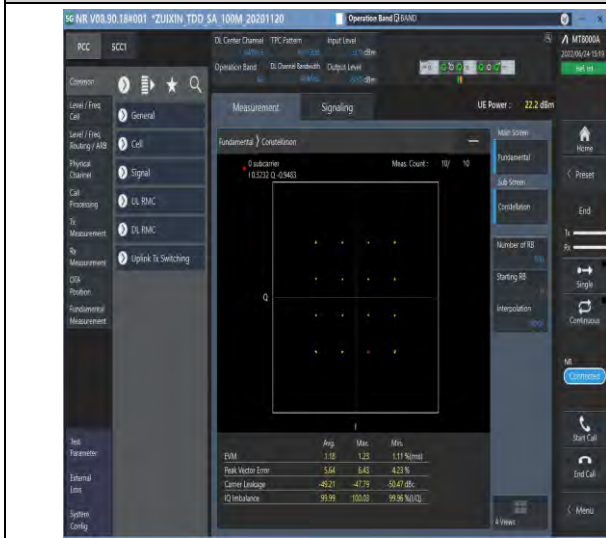
Test Graphs



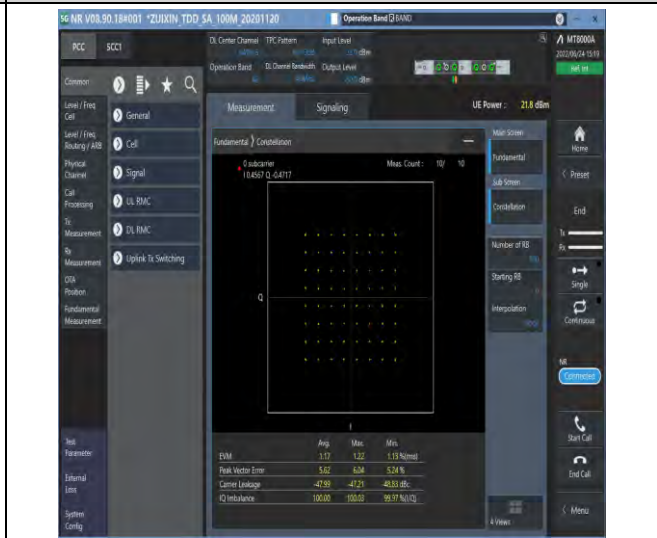
1-N48-PC3-30-40-M-9-CP-256QAM-Outer_Full-106
@0-Ant1-see graph-PASS



1-N48-PC3-30-40-M-2-DFT-QPSK-Outer_Full-100@
0-Ant1-see graph-PASS



1-N48-PC3-30-40-M-3-DFT-16QAM-Outer_Full-100
@0-Ant1-see graph-PASS

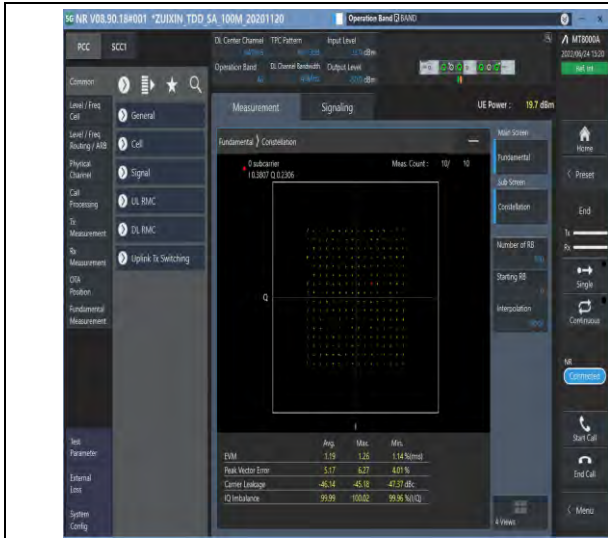


1-N48-PC3-30-40-M-4-DFT-64QAM-Outer_Full-100
@0-Ant1-see graph-PASS

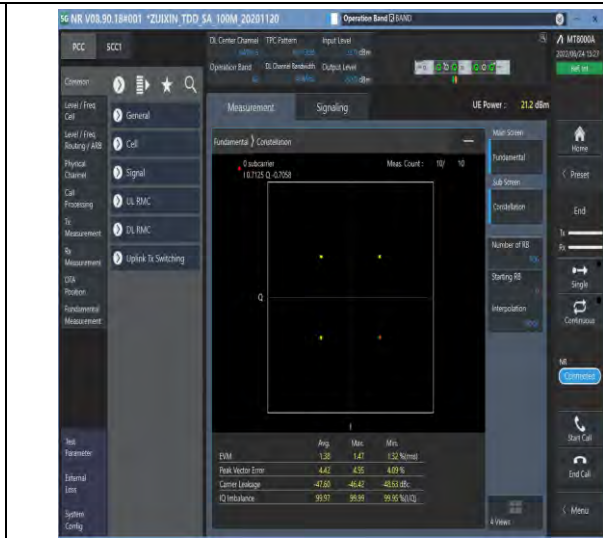


Unless otherwise agreed in writing, this document is issued by the Company subject to its General Conditions of Service printed overleaf, available on request or accessible at <http://www.sgs.com/en/Terms-and-Conditions.aspx> and, for electronic format documents, subject to Terms and Conditions for Electronic Documents at <http://www.sgs.com/en/Terms-and-Conditions/Terms-e-Document.aspx>. Attention is drawn to the limitation of liability, indemnification and jurisdiction issues defined therein. Any holder of this document is advised that information contained hereon reflects the Company's findings at the time of its intervention only and within the limits of Client's instructions, if any. The Company's sole responsibility is to its Client and this document does not exonerate parties to a transaction from exercising all their rights and obligations under the transaction documents. This document cannot be reproduced except in full, without prior written approval of the Company. Any unauthorized alteration, forgery or falsification of the content or appearance of this document is unlawful and offenders may be prosecuted to the fullest extent of the law. Unless otherwise stated the results shown in this test report refer only to the sample(s) tested and such sample(s) are retained for 30 days only.

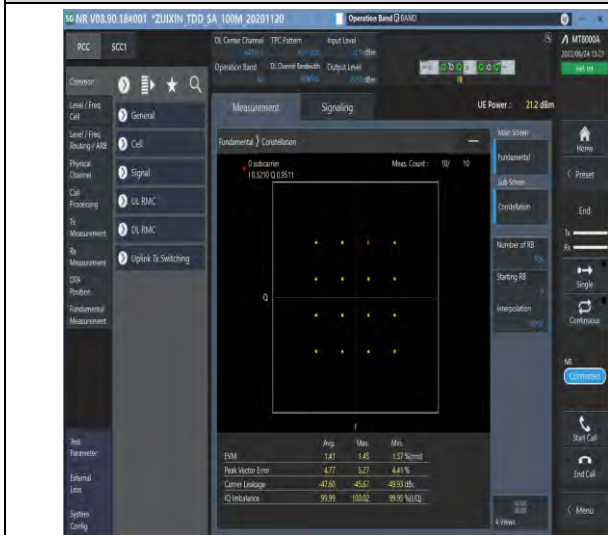
Attention: To check the authenticity of testing/inspection report & certificate, please contact us at telephone: (86-755) 8307 1443, or email: CN.Doccheck@sgs.com
 No.1 Workshop, M-10, Middle Section, Science & Technology Park, Shenzhen, China 518057 t (86-755) 26012053 f (86-755) 26710594 www.sgs.com.cn
 中国·深圳·科技园中区M-10栋一号厂房 邮编: 518057 t (86-755) 26012053 f (86-755) 26710594 sgs.china@sgs.com



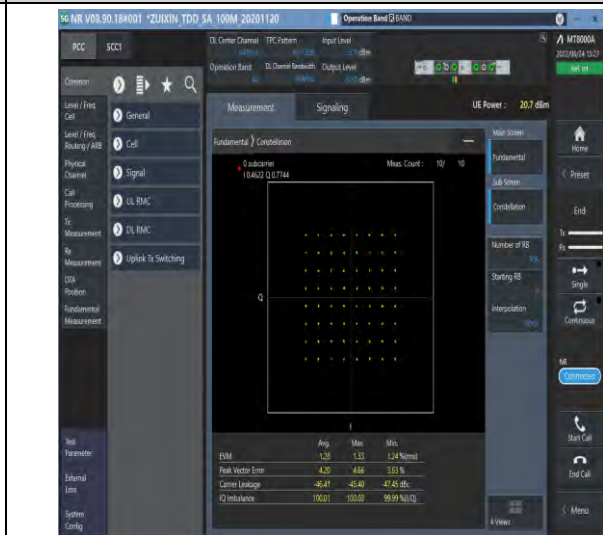
1-N48-PC3-30-40-M-5-DFT-256QAM-Outer_Full-100
@0-Ant1-see graph-PASS



1-N48-PC3-30-40-M-6-CP-QPSK-Outer_Full-106@
0-Ant1-see graph-PASS



1-N48-PC3-30-40-M-7-CP-16QAM-Outer_Full-106@
0-Ant1-see graph-PASS



1-N48-PC3-30-40-M-8-CP-64QAM-Outer_Full-106
@0-Ant1-see graph-PASS



Unless otherwise agreed in writing, this document is issued by the Company subject to its General Conditions of Service printed overleaf, available on request or accessible at <http://www.sgs.com/en/Terms-and-Conditions.aspx> and, for electronic format documents, subject to Terms and Conditions for Electronic Documents at <http://www.sgs.com/en/Terms-and-Conditions/Terms-e-Documents.aspx>. Attention is drawn to the limitation of liability, indemnification and jurisdiction issues defined therein. Any holder of this document is advised that information contained hereon reflects the Company's findings at the time of its intervention only and within the limits of Client's instructions, if any. The Company's sole responsibility is to its Client and this document does not exonerate parties to a transaction from exercising all their rights and obligations under the transaction documents. This document cannot be reproduced except in full, without prior written approval of the Company. Any unauthorized alteration, forgery or falsification of the content or appearance of this document is unlawful and offenders may be prosecuted to the fullest extent of the law. Unless otherwise stated the results shown in this test report refer only to the sample(s) tested and such sample(s) are retained for 30 days only.

Attention: To check the authenticity of testing/inspection report & certificate, please contact us at telephone: (86-755) 8307 1443, or email: CN.Doccheck@sgs.com
 No.1 Workshop, M-10, Middle Section, Science & Technology Park, Shenzhen, China 518057 t (86-755) 26012053 f (86-755) 26710594 www.sgs.com.cn
 中国·深圳·科技园中区M-10栋一号厂房 邮编: 518057 t (86-755) 26012053 f (86-755) 26710594 sgs.china@sgs.com

26dB Bandwidth and Occupied Bandwidth for SA

Test Result

Band	SCS	Bandwidth	Modulation	Channel	RB Config	Result (99%)	Result (26dB)	Verdict
N48	30	10	DFT-QPSK	L	Outer_Full	8.571	9.200	PASS
N48	30	10	DFT-PI2BPSK	L	Outer_Full	8.564	9.260	PASS
N48	30	10	DFT-16QAM	L	Outer_Full	8.587	9.140	PASS
N48	30	10	DFT-64QAM	L	Outer_Full	8.586	9.200	PASS
N48	30	10	DFT-256QAM	L	Outer_Full	8.58	9.040	PASS
N48	30	10	CP-QPSK	L	Outer_Full	8.584	9.020	PASS
N48	30	10	CP-16QAM	L	Outer_Full	8.58	9.360	PASS
N48	30	10	CP-64QAM	L	Outer_Full	8.561	9.100	PASS
N48	30	10	CP-256QAM	L	Outer_Full	8.556	9.040	PASS
N48	30	10	DFT-QPSK	M	Outer_Full	8.585	9.180	PASS
N48	30	10	DFT-PI2BPSK	M	Outer_Full	8.589	9.220	PASS
N48	30	10	DFT-16QAM	M	Outer_Full	8.573	9.120	PASS
N48	30	10	DFT-64QAM	M	Outer_Full	8.576	9.280	PASS
N48	30	10	DFT-256QAM	M	Outer_Full	8.598	9.100	PASS
N48	30	10	CP-QPSK	M	Outer_Full	8.6	9.160	PASS
N48	30	10	CP-16QAM	M	Outer_Full	8.574	9.180	PASS
N48	30	10	CP-64QAM	M	Outer_Full	8.562	9.220	PASS
N48	30	10	CP-256QAM	M	Outer_Full	8.59	9.280	PASS
N48	30	10	DFT-QPSK	H	Outer_Full	8.588	9.020	PASS
N48	30	10	DFT-PI2BPSK	H	Outer_Full	8.604	9.060	PASS
N48	30	10	DFT-16QAM	H	Outer_Full	8.621	9.280	PASS
N48	30	10	DFT-64QAM	H	Outer_Full	8.608	9.240	PASS
N48	30	10	DFT-256QAM	H	Outer_Full	8.57	9.160	PASS
N48	30	10	CP-QPSK	H	Outer_Full	8.566	9.240	PASS
N48	30	10	CP-16QAM	H	Outer_Full	8.587	9.180	PASS
N48	30	10	CP-64QAM	H	Outer_Full	8.572	9.220	PASS
N48	30	10	CP-256QAM	H	Outer_Full	8.564	9.260	PASS
N48	30	15	DFT-QPSK	H	Outer_Full	12.798	13.500	PASS
N48	30	15	DFT-PI2BPSK	H	Outer_Full	12.864	13.680	PASS
N48	30	15	DFT-16QAM	H	Outer_Full	12.869	13.650	PASS
N48	30	15	DFT-64QAM	H	Outer_Full	12.763	13.470	PASS
N48	30	15	DFT-256QAM	H	Outer_Full	12.83	13.680	PASS
N48	30	15	CP-QPSK	H	Outer_Full	13.559	14.280	PASS



Unless otherwise agreed in writing, this document is issued by the Company subject to its General Conditions of Service printed overleaf, available on request or accessible at <http://www.sgs.com/en/Terms-and-Conditions.aspx> and, for electronic format documents, subject to Terms and Conditions for Electronic Documents at <http://www.sgs.com/en/Terms-and-Conditions/Terms-e-Documents.aspx>. Attention is drawn to the limitation of liability, indemnification and jurisdiction issues defined therein. Any holder of this document is advised that information contained hereon reflects the Company's findings at the time of its intervention only and within the limits of Client's instructions, if any. The Company's sole responsibility is to its Client and this document does not exonerate parties to a transaction from exercising all their rights and obligations under the transaction documents. This document cannot be reproduced except in full, without prior written approval of the Company. Any unauthorized alteration, forgery or falsification of the content or appearance of this document is unlawful and offenders may be prosecuted to the fullest extent of the law. Unless otherwise stated the results shown in this test report refer only to the sample(s) tested and such sample(s) are retained for 30 days only.

Attention: To check the authenticity of testing/inspection report & certificate, please contact us at telephone: (86-755) 83071443, or email: CN.Doccheck@sgs.com
 No.1 Workshop, M-10, Middle Section, Science & Technology Park, Shenzhen, China 518057 t (86-755) 26012053 f (86-755) 26710594 www.sgs.com.cn
 中国·深圳·科技园中区M-10栋一号厂房 邮编: 518057 t (86-755) 26012053 f (86-755) 26710594 sgs.china@sgs.com



N48	30	15	CP-16QAM	H	Outer_Full	13.558	14.370	PASS
N48	30	15	CP-64QAM	H	Outer_Full	13.576	14.490	PASS
N48	30	15	CP-256QAM	H	Outer_Full	13.552	14.310	PASS
N48	30	20	DFT-QPSK	L	Outer_Full	17.84	18.680	PASS
N48	30	20	DFT-PI2BPSK	L	Outer_Full	17.851	18.520	PASS
N48	30	20	DFT-16QAM	L	Outer_Full	17.801	18.680	PASS
N48	30	20	DFT-64QAM	L	Outer_Full	17.831	18.600	PASS
N48	30	20	DFT-256QAM	L	Outer_Full	17.773	18.720	PASS
N48	30	20	CP-QPSK	L	Outer_Full	18.154	19.200	PASS
N48	30	20	CP-16QAM	L	Outer_Full	18.233	19.080	PASS
N48	30	20	CP-64QAM	L	Outer_Full	18.175	20.160	PASS
N48	30	20	CP-256QAM	L	Outer_Full	18.281	18.960	PASS
N48	30	20	DFT-QPSK	M	Outer_Full	17.81	18.720	PASS
N48	30	20	DFT-PI2BPSK	M	Outer_Full	17.802	18.520	PASS
N48	30	20	DFT-16QAM	M	Outer_Full	17.803	18.720	PASS
N48	30	20	DFT-64QAM	M	Outer_Full	17.866	18.760	PASS
N48	30	20	DFT-256QAM	M	Outer_Full	17.839	18.640	PASS
N48	30	20	CP-QPSK	M	Outer_Full	18.192	18.960	PASS
N48	30	20	CP-16QAM	M	Outer_Full	18.138	18.920	PASS
N48	30	20	CP-64QAM	M	Outer_Full	18.208	19.160	PASS
N48	30	20	CP-256QAM	M	Outer_Full	18.223	19.200	PASS
N48	30	20	DFT-QPSK	H	Outer_Full	17.722	18.640	PASS
N48	30	20	DFT-PI2BPSK	H	Outer_Full	17.845	18.680	PASS
N48	30	20	DFT-16QAM	H	Outer_Full	17.81	18.600	PASS
N48	30	20	DFT-64QAM	H	Outer_Full	17.824	18.720	PASS
N48	30	20	DFT-256QAM	H	Outer_Full	17.81	18.680	PASS
N48	30	20	CP-QPSK	H	Outer_Full	18.2	19.120	PASS
N48	30	20	CP-16QAM	H	Outer_Full	18.203	19.040	PASS
N48	30	20	CP-64QAM	H	Outer_Full	18.231	18.960	PASS
N48	30	20	CP-256QAM	H	Outer_Full	18.218	19.040	PASS
N48	30	40	DFT-QPSK	L	Outer_Full	35.712	37.280	PASS
N48	30	40	DFT-PI2BPSK	L	Outer_Full	35.765	37.600	PASS
N48	30	40	DFT-16QAM	L	Outer_Full	35.857	37.440	PASS
N48	30	40	DFT-64QAM	L	Outer_Full	35.674	37.440	PASS
N48	30	40	DFT-256QAM	L	Outer_Full	35.73	37.520	PASS
N48	30	40	CP-QPSK	L	Outer_Full	37.852	39.680	PASS
N48	30	40	CP-16QAM	L	Outer_Full	37.823	39.440	PASS
N48	30	40	CP-64QAM	L	Outer_Full	37.692	39.440	PASS
N48	30	40	CP-256QAM	L	Outer_Full	37.823	39.600	PASS



Unless otherwise agreed in writing, this document is issued by the Company subject to its General Conditions of Service printed overleaf, available on request or accessible at <http://www.sgs.com/en/Terms-and-Conditions.aspx> and, for electronic format documents, subject to Terms and Conditions for Electronic Documents at <http://www.sgs.com/en/Terms-and-Conditions/Terms-e-Document.aspx>. Attention is drawn to the limitation of liability, indemnification and jurisdiction issues defined therein. Any holder of this document is advised that information contained hereon reflects the Company's findings at the time of its intervention only and within the limits of Client's instructions, if any. The Company's sole responsibility is to its Client and this document does not exonerate parties to a transaction from exercising all their rights and obligations under the transaction documents. This document cannot be reproduced except in full, without prior written approval of the Company. Any unauthorized alteration, forgery or falsification of the content or appearance of this document is unlawful and offenders may be prosecuted to the fullest extent of the law. Unless otherwise stated the results shown in this test report refer only to the sample(s) tested and such sample(s) are retained for 30 days only.

Attention: To check the authenticity of testing/inspection report & certificate, please contact us at telephone: (86-755) 8307 1443, or email: CN.Doccheck@sgs.com
 No. 1 Workshop, M-10, Middle Section, Science & Technology Park, Shenzhen, China 518057 t (86-755) 26012053 f (86-755) 26710594 www.sgs.com.cn
 中国·深圳·科技园中区M-10栋一号厂房 邮编: 518057 t (86-755) 26012053 f (86-755) 26710594 sgs.china@sgs.com

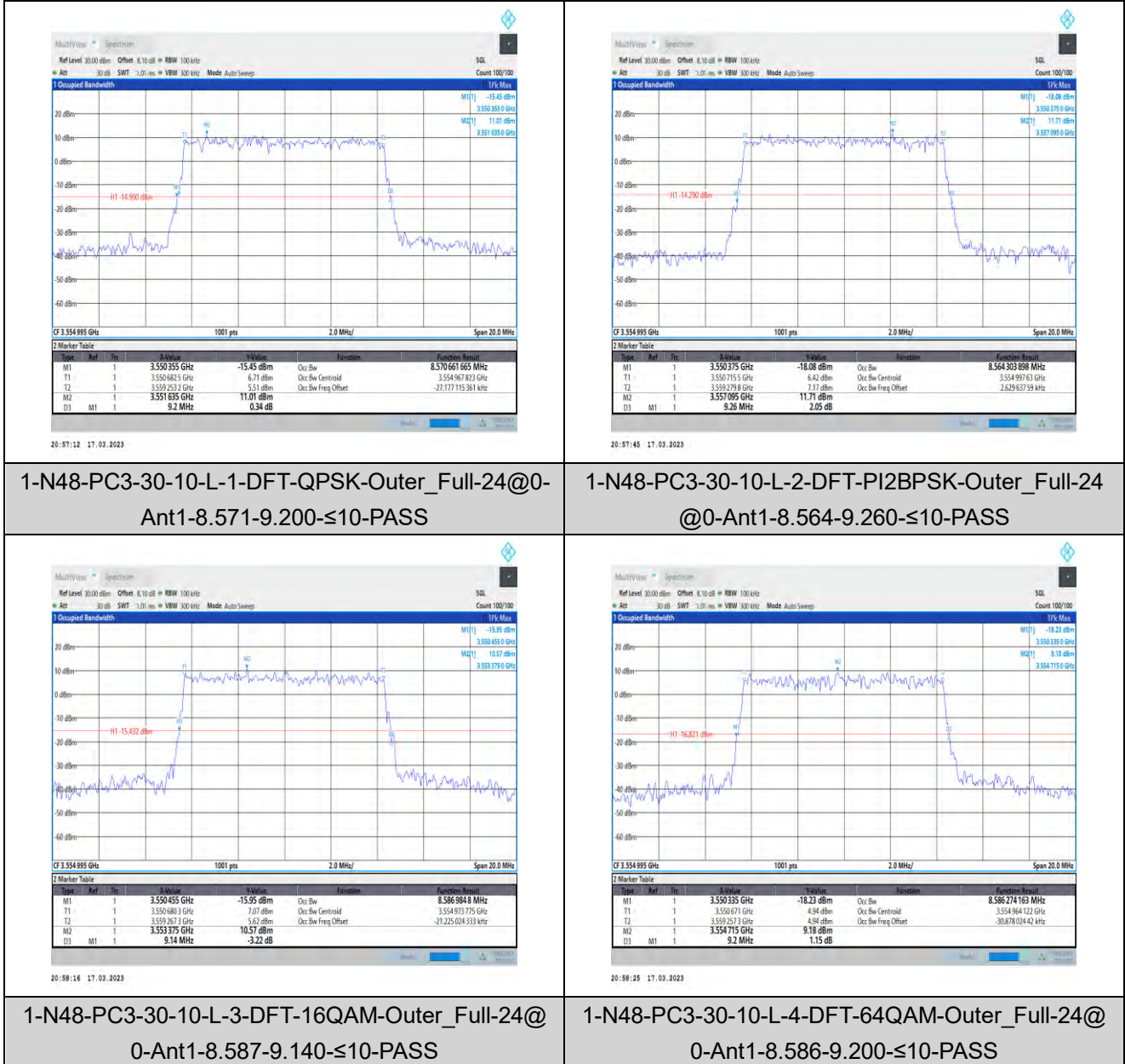


N48	30	40	DFT-QPSK	M	Outer_Full	35.621	37.440	PASS
N48	30	40	DFT-PI2BPSK	M	Outer_Full	35.711	37.440	PASS
N48	30	40	DFT-16QAM	M	Outer_Full	35.703	37.360	PASS
N48	30	40	DFT-64QAM	M	Outer_Full	35.795	37.440	PASS
N48	30	40	DFT-256QAM	M	Outer_Full	35.807	37.440	PASS
N48	30	40	CP-QPSK	M	Outer_Full	37.739	39.440	PASS
N48	30	40	CP-16QAM	M	Outer_Full	37.825	39.440	PASS
N48	30	40	CP-64QAM	M	Outer_Full	37.83	39.520	PASS
N48	30	40	CP-256QAM	M	Outer_Full	37.926	39.600	PASS
N48	30	40	DFT-QPSK	H	Outer_Full	35.755	37.200	PASS
N48	30	40	DFT-PI2BPSK	H	Outer_Full	35.793	37.280	PASS
N48	30	40	DFT-16QAM	H	Outer_Full	35.762	37.200	PASS
N48	30	40	DFT-64QAM	H	Outer_Full	35.788	37.520	PASS
N48	30	40	DFT-256QAM	H	Outer_Full	35.816	37.360	PASS
N48	30	40	CP-QPSK	H	Outer_Full	37.897	39.440	PASS
N48	30	40	CP-16QAM	H	Outer_Full	37.748	39.520	PASS
N48	30	40	CP-64QAM	H	Outer_Full	37.779	39.520	PASS
N48	30	40	CP-256QAM	H	Outer_Full	37.808	39.360	PASS



Unless otherwise agreed in writing, this document is issued by the Company subject to its General Conditions of Service printed overleaf, available on request or accessible at <http://www.sgs.com/en/Terms-and-Conditions.aspx> and, for electronic format documents, subject to Terms and Conditions for Electronic Documents at <http://www.sgs.com/en/Terms-and-Conditions/Terms-e-Documents.aspx>. Attention is drawn to the limitation of liability, indemnification and jurisdiction issues defined therein. Any holder of this document is advised that information contained hereon reflects the Company's findings at the time of its intervention only and within the limits of Client's instructions, if any. The Company's sole responsibility is to its Client and this document does not exonerate parties to a transaction from exercising all their rights and obligations under the transaction documents. This document cannot be reproduced except in full, without prior written approval of the Company. Any unauthorized alteration, forgery or falsification of the content or appearance of this document is unlawful and offenders may be prosecuted to the fullest extent of the law. Unless otherwise stated the results shown in this test report refer only to the sample(s) tested and such sample(s) are retained for 30 days only.
Attention: To check the authenticity of testing / inspection report & certificate, please contact us at telephone: (86-755) 8307 1443, or email: CN.Doccheck@sgs.com

Test Graphs



Unless otherwise agreed in writing, this document is issued by the Company subject to its General Conditions of Service printed overleaf, available on request or accessible at <http://www.sgs.com/en/Terms-and-Conditions.aspx> and, for electronic format documents, subject to Terms and Conditions for Electronic Documents at <http://www.sgs.com/en/Terms-and-Conditions/Terms-e-Documents.aspx>. Attention is drawn to the limitation of liability, indemnification and jurisdiction issues defined therein. Any holder of this document is advised that information contained hereon reflects the Company's findings at the time of its intervention only and within the limits of Client's instructions, if any. The Company's sole responsibility is to its Client and this document does not exonerate parties to a transaction from exercising all their rights and obligations under the transaction documents. This document cannot be reproduced except in full, without prior written approval of the Company. Any unauthorized alteration, forgery or falsification of the content or appearance of this document is unlawful and offenders may be prosecuted to the fullest extent of the law. Unless otherwise stated the results shown in this test report refer only to the sample(s) tested and such sample(s) are retained for 30 days only.

Attention: To check the authenticity of testing/inspection report & certificate, please contact us at telephone: (86-755) 83071443, or email: CN.Doccheck@sgs.com

No.1 Workshop, M-10, Middle Section, Science & Technology Park, Shenzhen, China 518057 t (86-755) 26012053 f (86-755) 26710594 www.sgs.com.cn
中国·深圳·科技园中区M-10栋一号厂房 邮编: 518057 t (86-755) 26012053 f (86-755) 26710594 sgs.china@sgs.com



1-N48-PC3-30-10-L-5-DFT-256QAM-Outer_Full-24 @0-Ant1-8.58-9.040-≤10-PASS



1-N48-PC3-30-10-L-6-CP-QPSK-Outer_Full-24@0-Ant1-8.584-9.020-≤10-PASS



1-N48-PC3-30-10-L-7-CP-16QAM-Outer_Full-24@0-Ant1-8.58-9.360-≤10-PASS

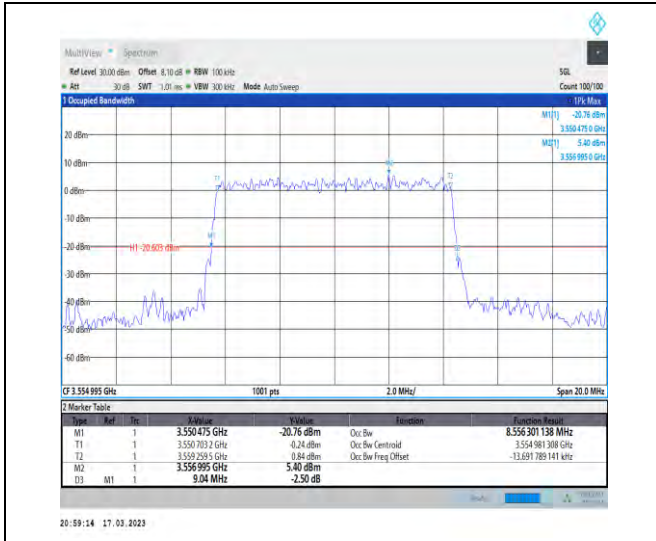


1-N48-PC3-30-10-L-8-CP-64QAM-Outer_Full-24@0-Ant1-8.561-9.100-≤10-PASS

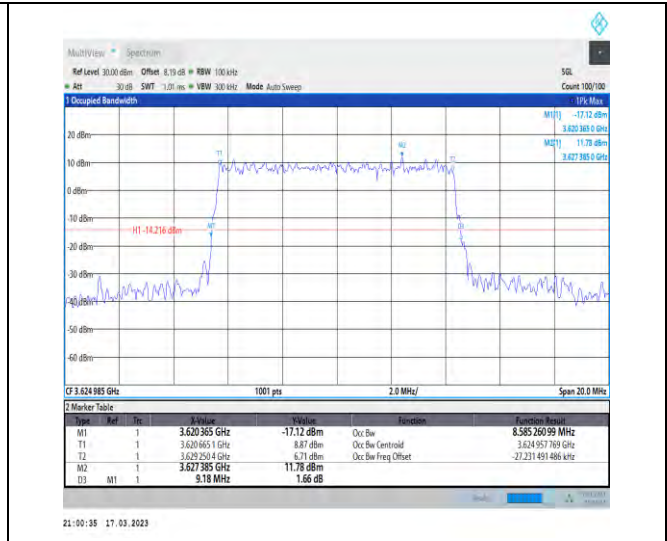


Unless otherwise agreed in writing, this document is issued by the Company subject to its General Conditions of Service printed overleaf, available on request or accessible at <http://www.sgs.com/en/Terms-and-Conditions.aspx> and, for electronic format documents, subject to Terms and Conditions for Electronic Documents at <http://www.sgs.com/en/Terms-and-Conditions/Terms-e-Documents.aspx>. Attention is drawn to the limitation of liability, indemnification and jurisdiction issues defined therein. Any holder of this document is advised that information contained hereon reflects the Company's findings at the time of its intervention only and within the limits of Client's instructions, if any. The Company's sole responsibility is to its Client and this document does not exonerate parties to a transaction from exercising all their rights and obligations under the transaction documents. This document cannot be reproduced except in full, without prior written approval of the Company. Any unauthorized alteration, forgery or falsification of the content or appearance of this document is unlawful and offenders may be prosecuted to the fullest extent of the law. Unless otherwise stated the results shown in this test report refer only to the sample(s) tested and such sample(s) are retained for 30 days only.
Attention: To check the authenticity of testing/inspection report & certificate, please contact us at telephone: (86-755) 83071443, or email: CN.Doccheck@sgs.com

No.1 Workshop, M-10, Middle Section, Science & Technology Park, Shenzhen, China 518057 t (86-755) 26012053 f (86-755) 26710594 www.sgs.com.cn
中国·深圳·科技园中区M-10栋一号厂房 邮编: 518057 t (86-755) 26012053 f (86-755) 26710594 sgs.china@sgs.com



1-N48-PC3-30-10-L-9-CP-256QAM-Outer_Full-24@
0-Ant1-8.556-9.040-≤10-PASS



1-N48-PC3-30-10-M-1-DFT-QPSK-Outer_Full-24@
0-Ant1-8.585-9.180-≤10-PASS



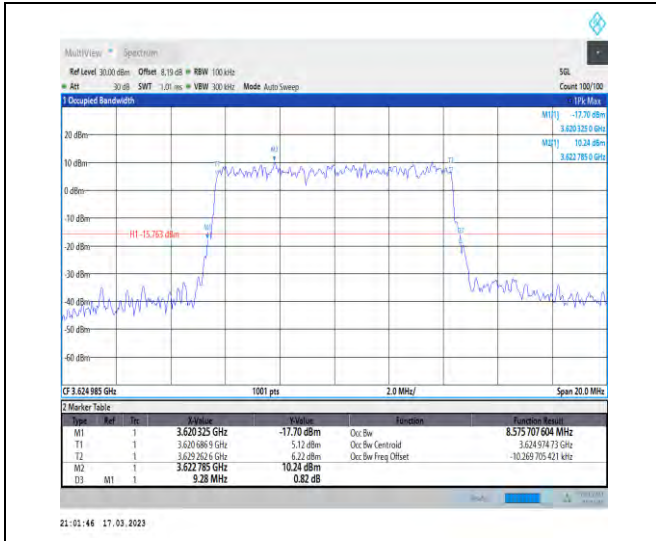
1-N48-PC3-30-10-M-2-DFT-PI2BPSK-Outer_Full-24
@0-Ant1-8.589-9.220-≤10-PASS



1-N48-PC3-30-10-M-3-DFT-16QAM-Outer_Full-24@
0-Ant1-8.573-9.120-≤10-PASS



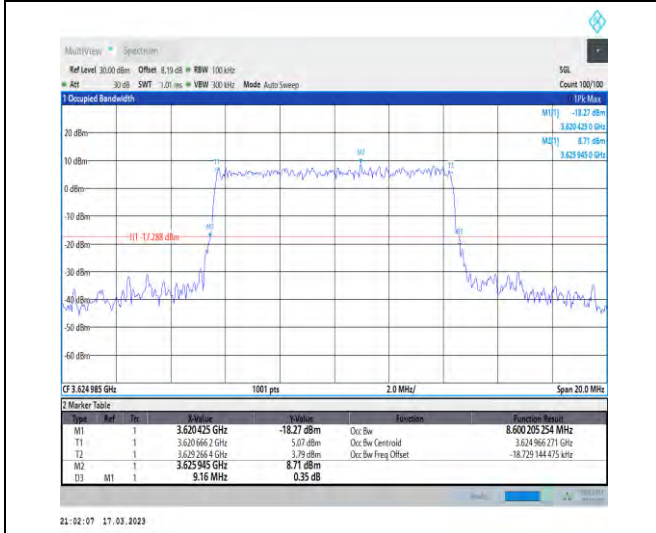
Unless otherwise agreed in writing, this document is issued by the Company subject to its General Conditions of Service printed overleaf, available on request or accessible at <http://www.sgs.com/en/Terms-and-Conditions.aspx> and, for electronic format documents, subject to Terms and Conditions for Electronic Documents at <http://www.sgs.com/en/Terms-and-Conditions/Terms-e-Documents.aspx>. Attention is drawn to the limitation of liability, indemnification and jurisdiction issues defined therein. Any holder of this document is advised that information contained hereon reflects the Company's findings at the time of its intervention only and within the limits of Client's instructions, if any. The Company's sole responsibility is to its Client and this document does not exonerate parties to a transaction from exercising all their rights and obligations under the transaction documents. This document cannot be reproduced except in full, without prior written approval of the Company. Any unauthorized alteration, forgery or falsification of the content or appearance of this document is unlawful and offenders may be prosecuted to the fullest extent of the law. Unless otherwise stated the results shown in this test report refer only to the sample(s) tested and such sample(s) are retained for 30 days only.
Attention: To check the authenticity of testing/inspection report & certificate, please contact us at telephone: (86-755) 83071443, or email: CN.Doccheck@sgs.com



1-N48-PC3-30-10-M-4-DFT-64QAM-Outer_Full-24@0-Ant1-8.576-9.280-<=10-PASS



1-N48-PC3-30-10-M-5-DFT-256QAM-Outer_Full-24@0-Ant1-8.598-9.100-<=10-PASS



1-N48-PC3-30-10-M-6-CP-QPSK-Outer_Full-24@0-Ant1-8.6-9.160-<=10-PASS

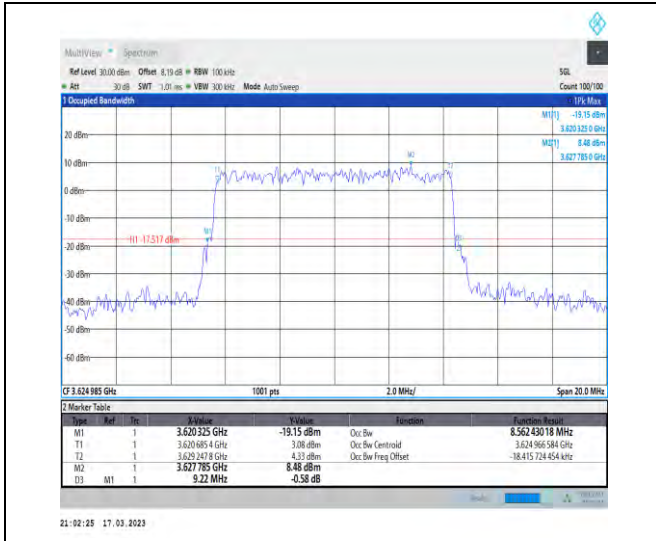


1-N48-PC3-30-10-M-7-CP-16QAM-Outer_Full-24@0-Ant1-8.574-9.180-<=10-PASS

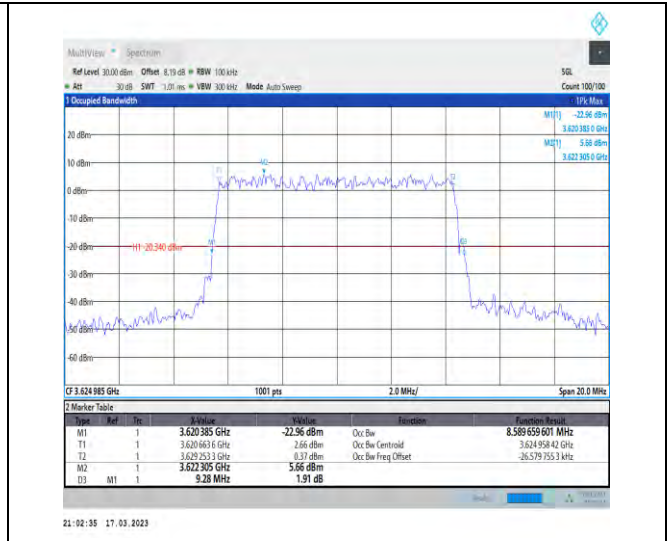


Unless otherwise agreed in writing, this document is issued by the Company subject to its General Conditions of Service printed overleaf, available on request or accessible at <http://www.sgs.com/en/Terms-and-Conditions.aspx> and, for electronic format documents, subject to Terms and Conditions for Electronic Documents at <http://www.sgs.com/en/Terms-and-Conditions/Terms-e-Documents.aspx>. Attention is drawn to the limitation of liability, indemnification and jurisdiction issues defined therein. Any holder of this document is advised that information contained hereon reflects the Company's findings at the time of its intervention only and within the limits of Client's instructions, if any. The Company's sole responsibility is to its Client and this document does not exonerate parties to a transaction from exercising all their rights and obligations under the transaction documents. This document cannot be reproduced except in full, without prior written approval of the Company. Any unauthorized alteration, forgery or falsification of the content or appearance of this document is unlawful and offenders may be prosecuted to the fullest extent of the law. Unless otherwise stated the results shown in this test report refer only to the sample(s) tested and such sample(s) are retained for 30 days only.

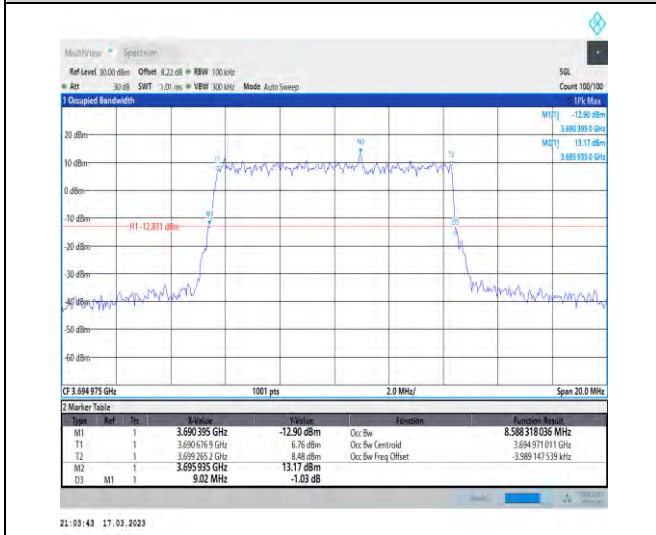
Attention: To check the authenticity of testing/inspection report & certificate, please contact us at telephone: (86-755) 83071443, or email: CN.Doccheck@sgs.com



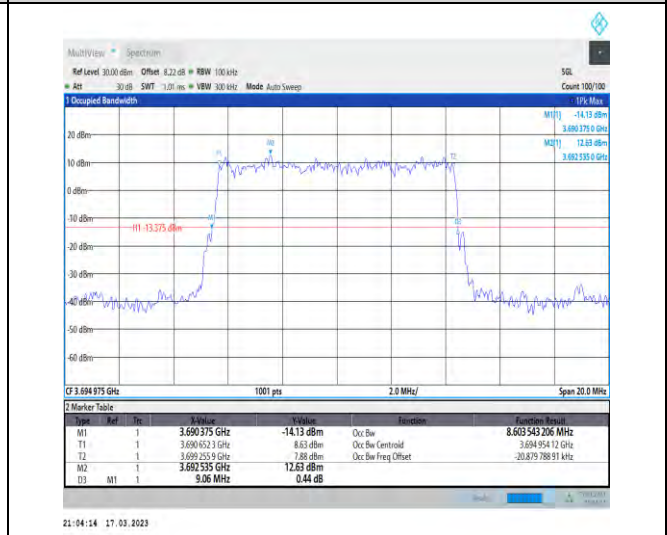
1-N48-PC3-30-10-M-8-CP-64QAM-Outer_Full-24@0
-Ant1-8.562-9.220-≤10-PASS



1-N48-PC3-30-10-M-9-CP-256QAM-Outer_Full-24@0-Ant1-8.59-9.280-≤10-PASS



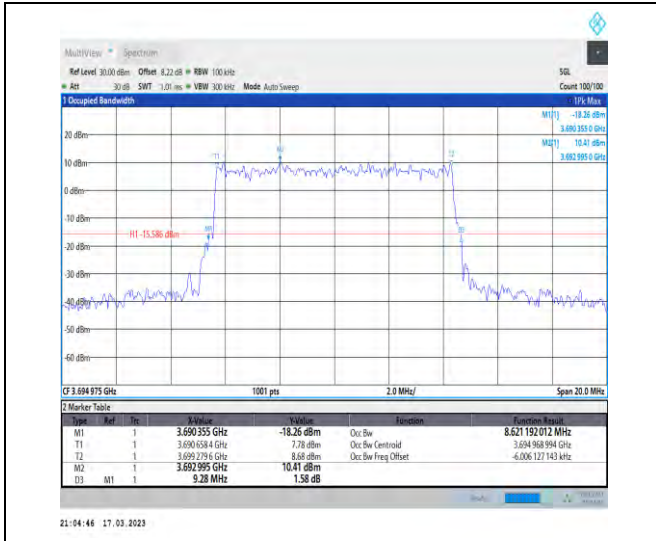
1-N48-PC3-30-10-H-1-DFT-QPSK-Outer_Full-24@0-Ant1-8.588-9.020-≤10-PASS



1-N48-PC3-30-10-H-2-DFT-PI2BPSK-Outer_Full-24@0-Ant1-8.604-9.060-≤10-PASS



Unless otherwise agreed in writing, this document is issued by the Company subject to its General Conditions of Service printed overleaf, available on request or accessible at <http://www.sgs.com/en/Terms-and-Conditions.aspx> and, for electronic format documents, subject to Terms and Conditions for Electronic Documents at <http://www.sgs.com/en/Terms-and-Conditions/Terms-e-Document.aspx>. Attention is drawn to the limitation of liability, indemnification and jurisdiction issues defined therein. Any holder of this document is advised that information contained hereon reflects the Company's findings at the time of its intervention only and within the limits of Client's instructions, if any. The Company's sole responsibility is to its Client and this document does not exonerate parties to a transaction from exercising all their rights and obligations under the transaction documents. This document cannot be reproduced except in full, without prior written approval of the Company. Any unauthorized alteration, forgery or falsification of the content or appearance of this document is unlawful and offenders may be prosecuted to the fullest extent of the law. Unless otherwise stated the results shown in this test report refer only to the sample(s) tested and such sample(s) are retained for 30 days only.
Attention: To check the authenticity of testing/inspection report & certificate, please contact us at telephone: (86-755) 83071443, or email: CN.Doccheck@sgs.com



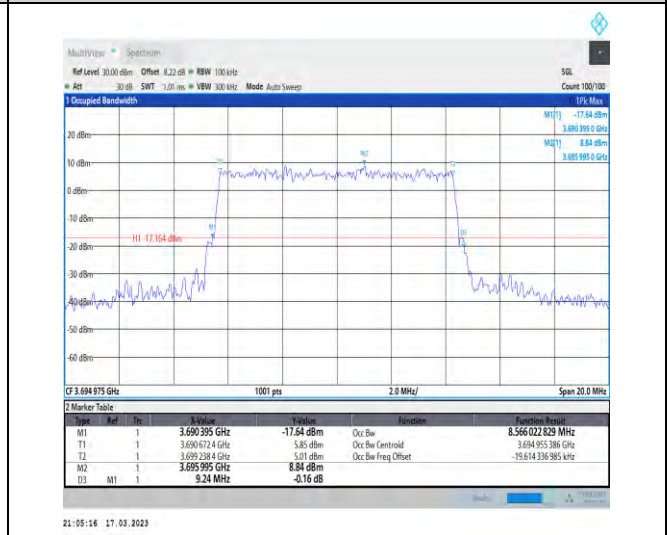
1-N48-PC3-30-10-H-3-DFT-16QAM-Outer_Full-24@
0-Ant1-8.621-9.280-≤10-PASS



1-N48-PC3-30-10-H-4-DFT-64QAM-Outer_Full-24@
0-Ant1-8.608-9.240-≤10-PASS



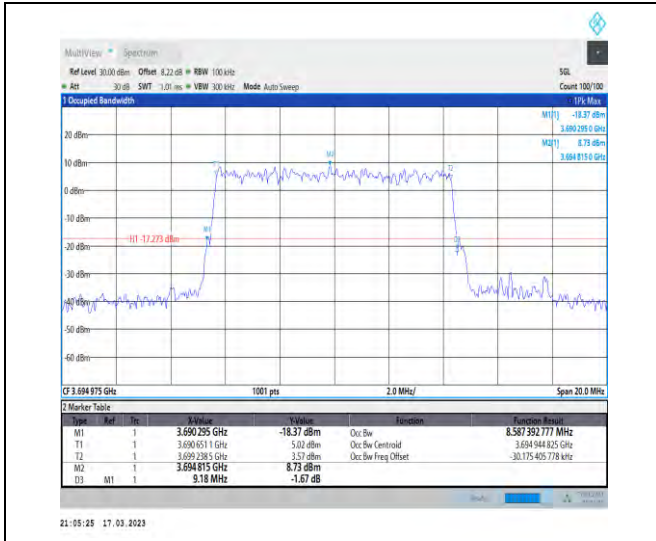
1-N48-PC3-30-10-H-5-DFT-256QAM-Outer_Full-24
@0-Ant1-8.57-9.160-≤10-PASS



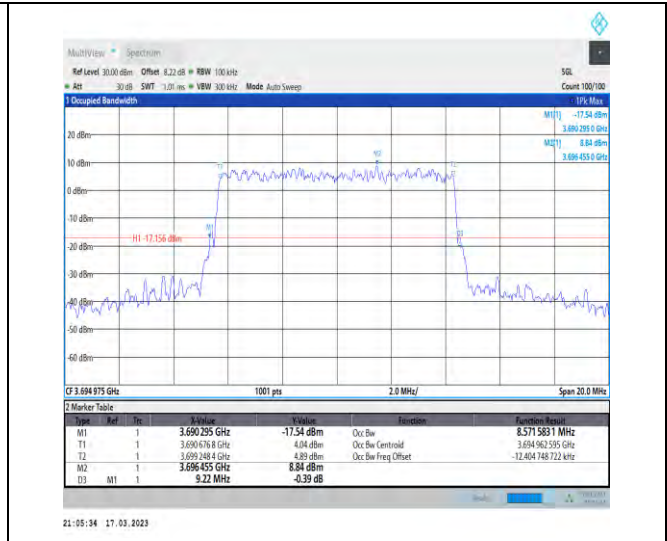
1-N48-PC3-30-10-H-6-CP-QPSK-Outer_Full-24@0-
Ant1-8.566-9.240-≤10-PASS



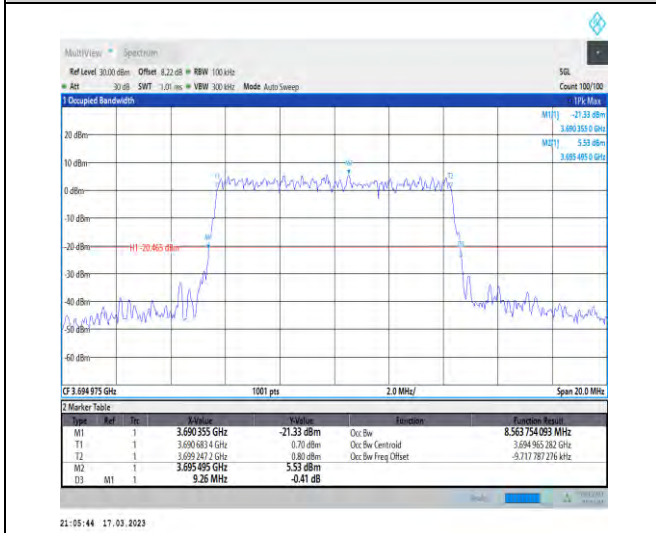
Unless otherwise agreed in writing, this document is issued by the Company subject to its General Conditions of Service printed overleaf, available on request or accessible at <http://www.sgs.com/en/Terms-and-Conditions.aspx> and, for electronic format documents, subject to Terms and Conditions for Electronic Documents at <http://www.sgs.com/en/Terms-and-Conditions/Terms-e-Document.aspx>. Attention is drawn to the limitation of liability, indemnification and jurisdiction issues defined therein. Any holder of this document is advised that information contained hereon reflects the Company's findings at the time of its intervention only and within the limits of Client's instructions, if any. The Company's sole responsibility is to its Client and this document does not exonerate parties to a transaction from exercising all their rights and obligations under the transaction documents. This document cannot be reproduced except in full, without prior written approval of the Company. Any unauthorized alteration, forgery or falsification of the content or appearance of this document is unlawful and offenders may be prosecuted to the fullest extent of the law. Unless otherwise stated the results shown in this test report refer only to the sample(s) tested and such sample(s) are retained for 30 days only.
Attention: To check the authenticity of testing/inspection report & certificate, please contact us at telephone: (86-755) 83071443, or email: CN.Doccheck@sgs.com



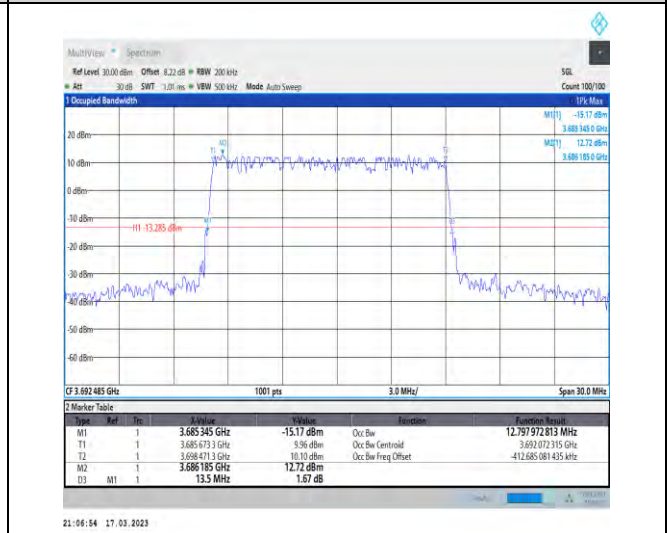
1-N48-PC3-30-10-H-7-CP-16QAM-Outer_Full-24@0
-Ant1-8.587-9.180-≤10-PASS



1-N48-PC3-30-10-H-8-CP-64QAM-Outer_Full-24@0
-Ant1-8.572-9.220-≤10-PASS



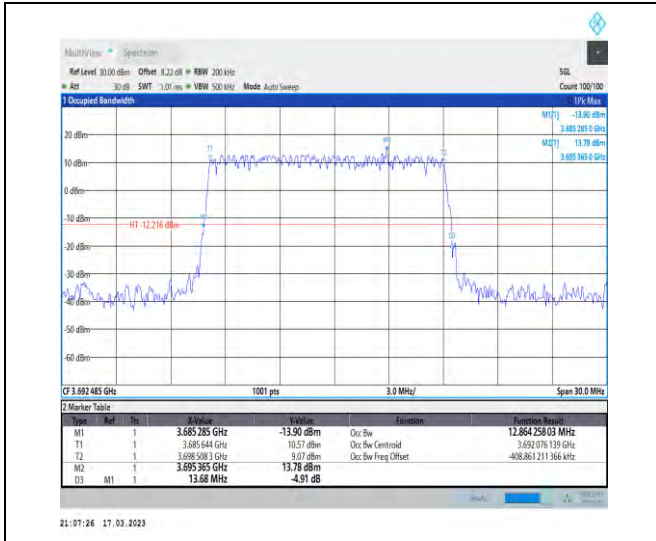
1-N48-PC3-30-10-H-9-CP-256QAM-Outer_Full-24@0
-Ant1-8.564-9.260-≤10-PASS



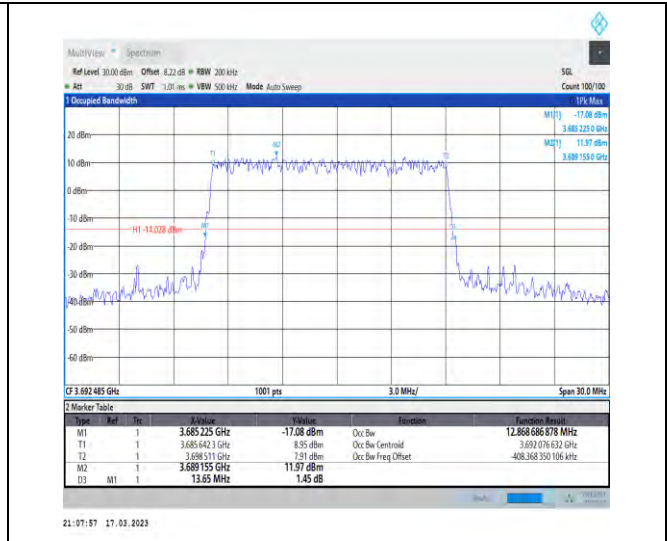
1-N48-PC3-30-15-H-1-DFT-QPSK-Outer_Full-36@0
-Ant1-12.798-13.500-≤15-PASS



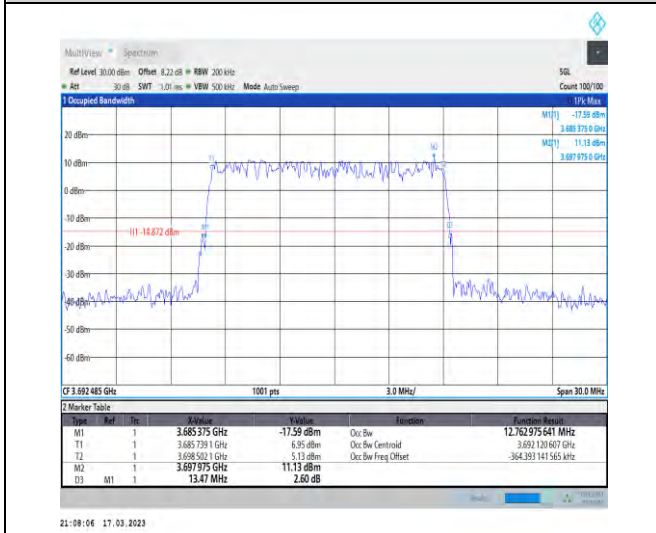
Unless otherwise agreed in writing, this document is issued by the Company subject to its General Conditions of Service printed overleaf, available on request or accessible at <http://www.sgs.com/en/Terms-and-Conditions.aspx> and, for electronic format documents, subject to Terms and Conditions for Electronic Documents at <http://www.sgs.com/en/Terms-and-Conditions/Terms-e-Documents.aspx>. Attention is drawn to the limitation of liability, indemnification and jurisdiction issues defined therein. Any holder of this document is advised that information contained hereon reflects the Company's findings at the time of its intervention only and within the limits of Client's instructions, if any. The Company's sole responsibility is to its Client and this document does not exonerate parties to a transaction from exercising all their rights and obligations under the transaction documents. This document cannot be reproduced except in full, without prior written approval of the Company. Any unauthorized alteration, forgery or falsification of the content or appearance of this document is unlawful and offenders may be prosecuted to the fullest extent of the law. Unless otherwise stated the results shown in this test report refer only to the sample(s) tested and such sample(s) are retained for 30 days only.
Attention: To check the authenticity of testing/inspection report & certificate, please contact us at telephone: (86-755) 83071443, or email: CN.Doccheck@sgs.com



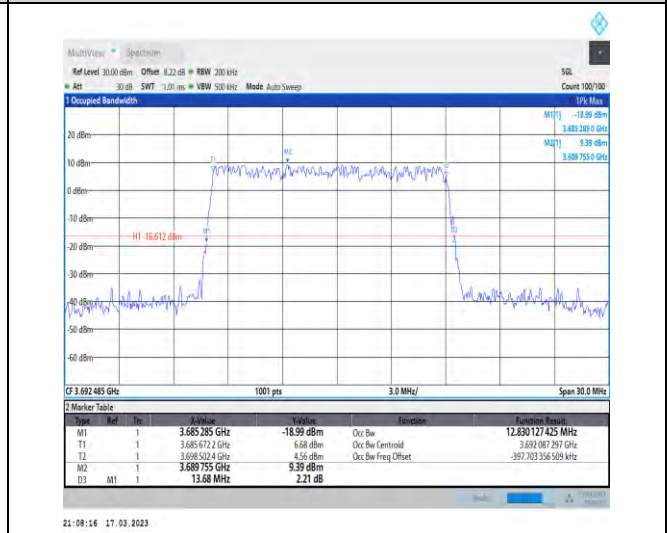
1-N48-PC3-30-15-H-2-DFT-PI2BPSK-Outer_Full-36 @0-Ant1-12.864-13.680-≤15-PASS



1-N48-PC3-30-15-H-3-DFT-16QAM-Outer_Full-36 @0-Ant1-12.869-13.650-≤15-PASS



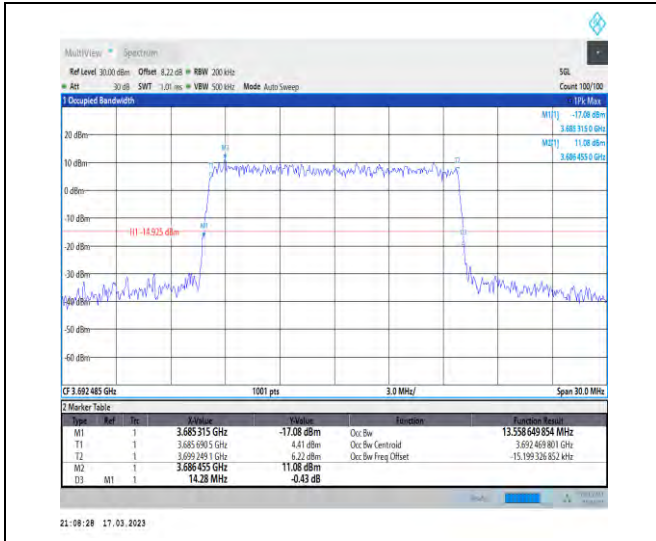
1-N48-PC3-30-15-H-4-DFT-64QAM-Outer_Full-36 @0-Ant1-12.763-13.470-≤15-PASS



1-N48-PC3-30-15-H-5-DFT-256QAM-Outer_Full-36 @0-Ant1-12.83-13.680-≤15-PASS



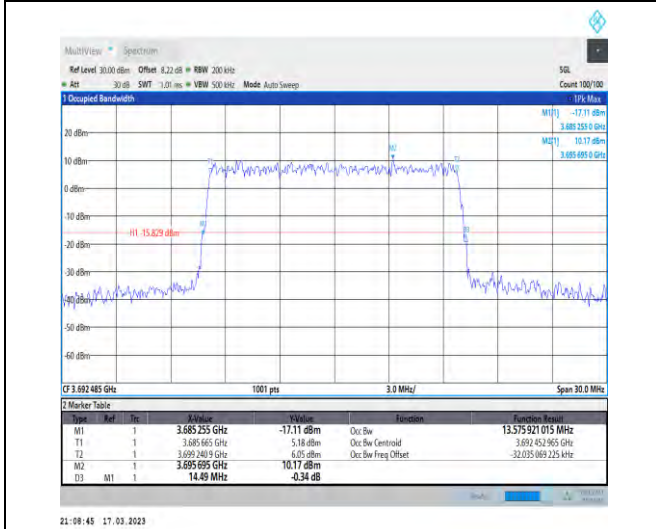
Unless otherwise agreed in writing, this document is issued by the Company subject to its General Conditions of Service printed overleaf, available on request or accessible at <http://www.sgs.com/en/Terms-and-Conditions.aspx> and, for electronic format documents, subject to Terms and Conditions for Electronic Documents at <http://www.sgs.com/en/Terms-and-Conditions/Terms-e-Documents.aspx>. Attention is drawn to the limitation of liability, indemnification and jurisdiction issues defined therein. Any holder of this document is advised that information contained hereon reflects the Company's findings at the time of its intervention only and within the limits of Client's instructions, if any. The Company's sole responsibility is to its Client and this document does not exonerate parties to a transaction from exercising all their rights and obligations under the transaction documents. This document cannot be reproduced except in full, without prior written approval of the Company. Any unauthorized alteration, forgery or falsification of the content or appearance of this document is unlawful and offenders may be prosecuted to the fullest extent of the law. Unless otherwise stated the results shown in this test report refer only to the sample(s) tested and such sample(s) are retained for 30 days only. Attention: To check the authenticity of testing/inspection report & certificate, please contact us at telephone: (86-755) 83071443, or email: CN.Doccheck@sgs.com



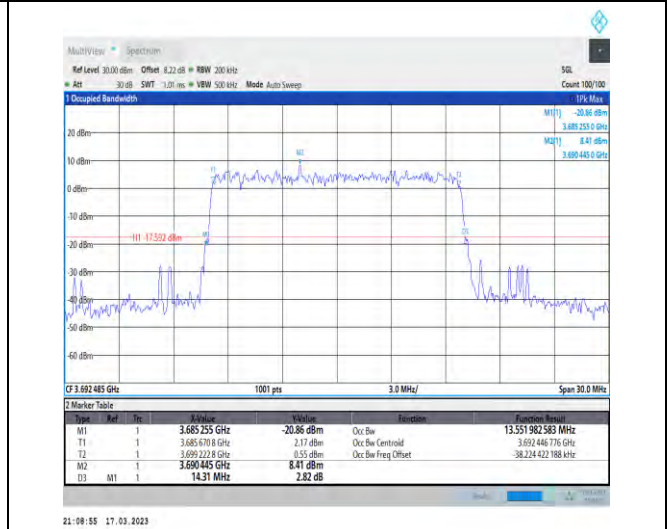
1-N48-PC3-30-15-H-6-CP-QPSK-Outer_Full-38@0-Ant1-13.559-14.280-≤15-PASS



1-N48-PC3-30-15-H-7-CP-16QAM-Outer_Full-38@0-Ant1-13.558-14.370-≤15-PASS



1-N48-PC3-30-15-H-8-CP-64QAM-Outer_Full-38@0-Ant1-13.576-14.490-≤15-PASS

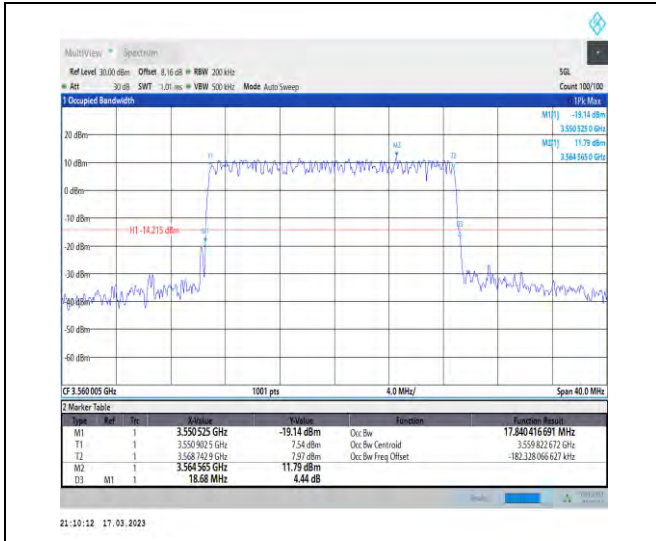


1-N48-PC3-30-15-H-9-CP-256QAM-Outer_Full-38@0-Ant1-13.552-14.310-≤15-PASS

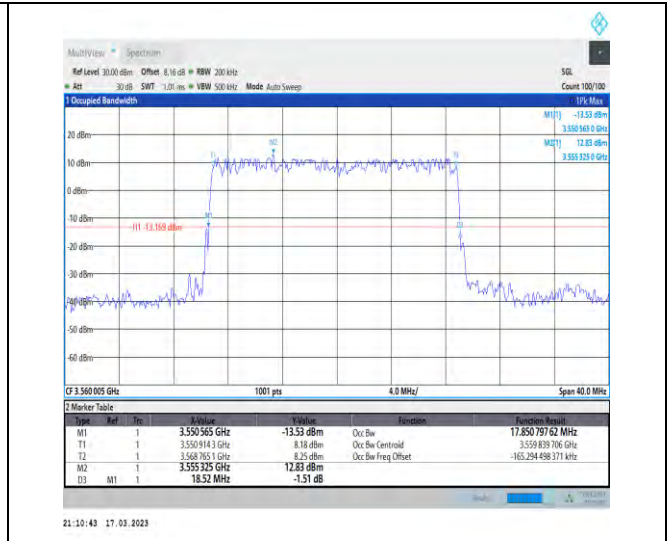


Unless otherwise agreed in writing, this document is issued by the Company subject to its General Conditions of Service printed overleaf, available on request or accessible at <http://www.sgs.com/en/Terms-and-Conditions.aspx> and, for electronic format documents, subject to Terms and Conditions for Electronic Documents at <http://www.sgs.com/en/Terms-and-Conditions/Terms-e-Documents.aspx>. Attention is drawn to the limitation of liability, indemnification and jurisdiction issues defined therein. Any holder of this document is advised that information contained hereon reflects the Company's findings at the time of its intervention only and within the limits of Client's instructions, if any. The Company's sole responsibility is to its Client and this document does not exonerate parties to a transaction from exercising all their rights and obligations under the transaction documents. This document cannot be reproduced except in full, without prior written approval of the Company. Any unauthorized alteration, forgery or falsification of the content or appearance of this document is unlawful and offenders may be prosecuted to the fullest extent of the law. Unless otherwise stated the results shown in this test report refer only to the sample(s) tested and such sample(s) are retained for 30 days only.
Attention: To check the authenticity of testing/inspection report & certificate, please contact us at telephone: (86-755) 83071443, or email: CN.Doccheck@sgs.com

No.1 Workshop, M-10, Middle Section, Science & Technology Park, Shenzhen, China 518057 t (86-755) 26012053 f (86-755) 26710594 www.sgs.com.cn
中国·深圳·科技园中区M-10栋一号厂房 邮编: 518057 t (86-755) 26012053 f (86-755) 26710594 sgs.china@sgs.com



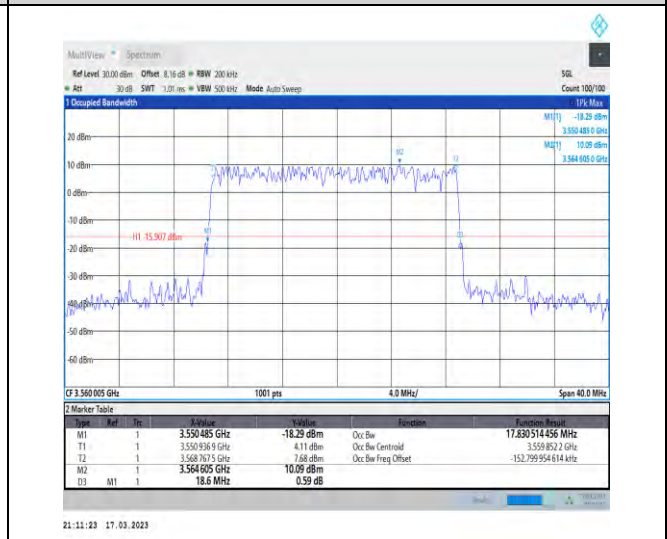
1-N48-PC3-30-20-L-1-DFT-QPSK-Outer_Full-50@0-Ant1-17.84-18.680-<=20-PASS



1-N48-PC3-30-20-L-2-DFT-PI2BPSK-Outer_Full-50@0-Ant1-17.851-18.520-<=20-PASS



1-N48-PC3-30-20-L-3-DFT-16QAM-Outer_Full-50@0-Ant1-17.801-18.680-<=20-PASS

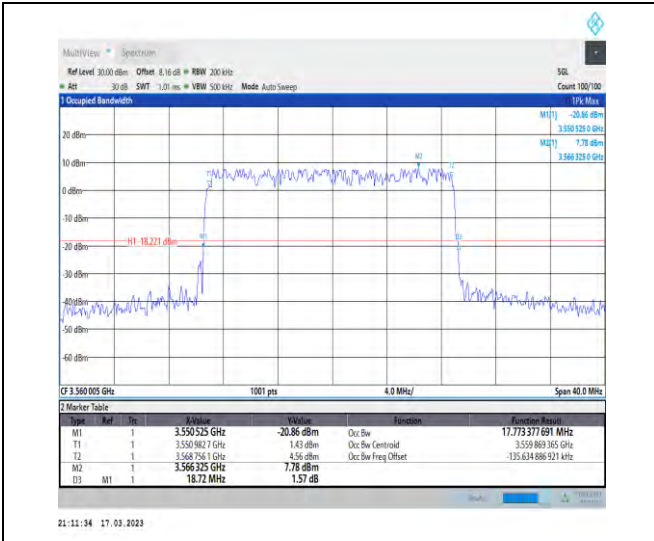


1-N48-PC3-30-20-L-4-DFT-64QAM-Outer_Full-50@0-Ant1-17.831-18.600-<=20-PASS



Unless otherwise agreed in writing, this document is issued by the Company subject to its General Conditions of Service printed overleaf, available on request or accessible at <http://www.sgs.com/en/Terms-and-Conditions.aspx> and, for electronic format documents, subject to Terms and Conditions for Electronic Documents at <http://www.sgs.com/en/Terms-and-Conditions/Terms-e-Documents.aspx>. Attention is drawn to the limitation of liability, indemnification and jurisdiction issues defined therein. Any holder of this document is advised that information contained hereon reflects the Company's findings at the time of its intervention only and within the limits of Client's instructions, if any. The Company's sole responsibility is to its Client and this document does not exonerate parties to a transaction from exercising all their rights and obligations under the transaction documents. This document cannot be reproduced except in full, without prior written approval of the Company. Any unauthorized alteration, forgery or falsification of the content or appearance of this document is unlawful and offenders may be prosecuted to the fullest extent of the law. Unless otherwise stated the results shown in this test report refer only to the sample(s) tested and such sample(s) are retained for 30 days only.

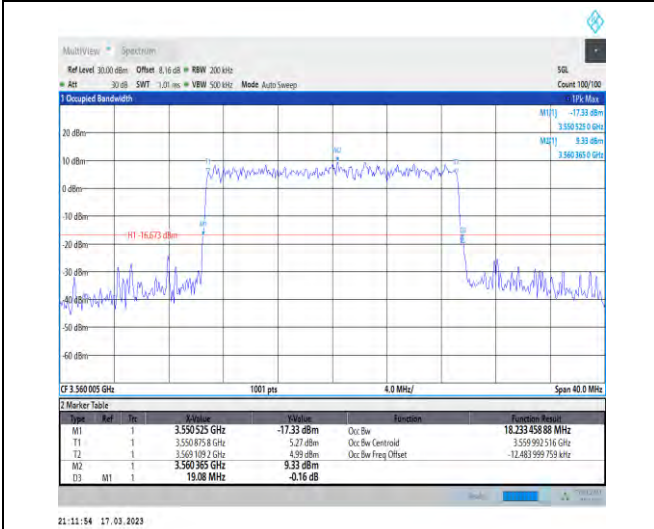
Attention: To check the authenticity of testing/inspection report & certificate, please contact us at telephone: (86-755) 83071443, or email: CN.Doccheck@sgs.com



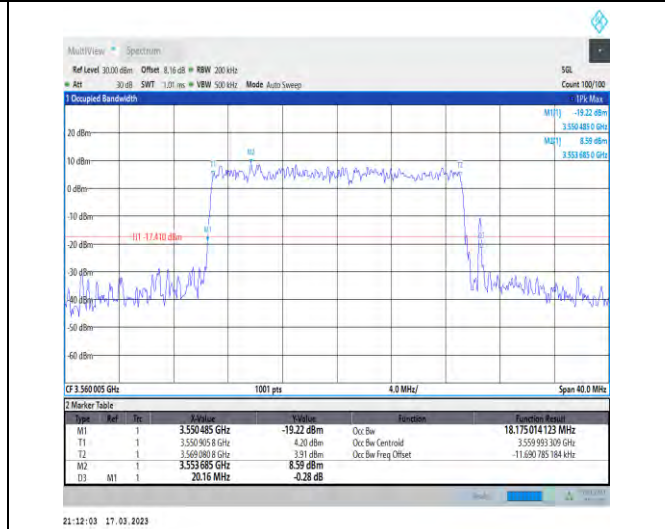
1-N48-PC3-30-20-L-5-DFT-256QAM-Outer_Full-50
@0-Ant1-17.773-18.720-<=20-PASS



1-N48-PC3-30-20-L-6-CP-QPSK-Outer_Full-51@0-A
nt1-18.154-19.200-<=20-PASS



1-N48-PC3-30-20-L-7-CP-16QAM-Outer_Full-51@0-
Ant1-18.233-19.080-<=20-PASS

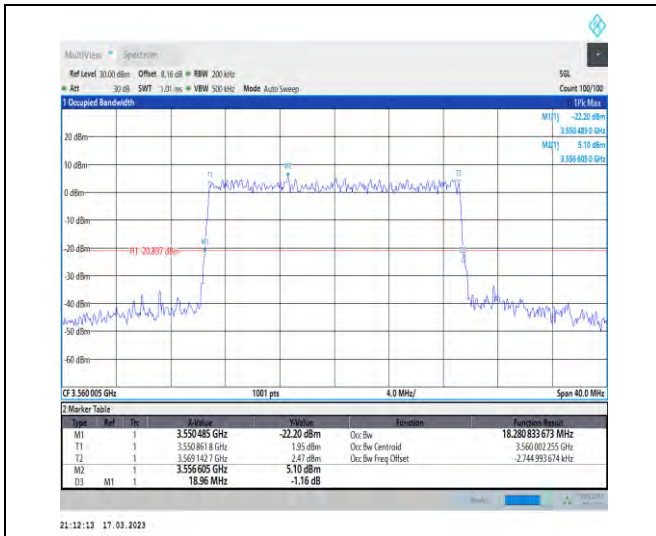


1-N48-PC3-30-20-L-8-CP-64QAM-Outer_Full-51@0-
Ant1-18.175-20.160-<=20-PASS

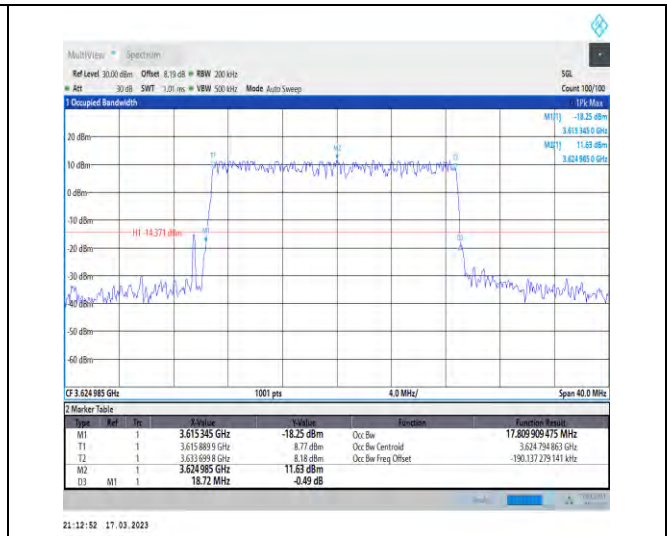


Unless otherwise agreed in writing, this document is issued by the Company subject to its General Conditions of Service printed overleaf, available on request or accessible at <http://www.sgs.com/en/Terms-and-Conditions.aspx> and, for electronic format documents, subject to Terms and Conditions for Electronic Documents at <http://www.sgs.com/en/Terms-and-Conditions/Terms-e-Documents.aspx>. Attention is drawn to the limitation of liability, indemnification and jurisdiction issues defined therein. Any holder of this document is advised that information contained hereon reflects the Company's findings at the time of its intervention only and within the limits of Client's instructions, if any. The Company's sole responsibility is to its Client and this document does not exonerate parties to a transaction from exercising all their rights and obligations under the transaction documents. This document cannot be reproduced except in full, without prior written approval of the Company. Any unauthorized alteration, forgery or falsification of the content or appearance of this document is unlawful and offenders may be prosecuted to the fullest extent of the law. Unless otherwise stated the results shown in this test report refer only to the sample(s) tested and such sample(s) are retained for 30 days only.
Attention: To check the authenticity of testing/inspection report & certificate, please contact us at telephone: (86-755) 83071443, or email: CN.Doccheck@sgs.com

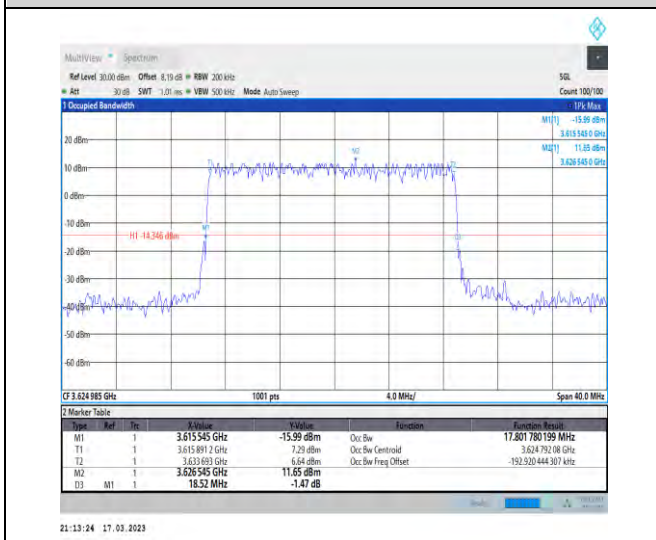
No.1 Workshop, M-10, Middle Section, Science & Technology Park, Shenzhen, China 518057 t (86-755) 26012053 f (86-755) 26710594 www.sgs.com.cn
中国·深圳·科技园中区M-10栋一号厂房 邮编: 518057 t (86-755) 26012053 f (86-755) 26710594 sgs.china@sgs.com



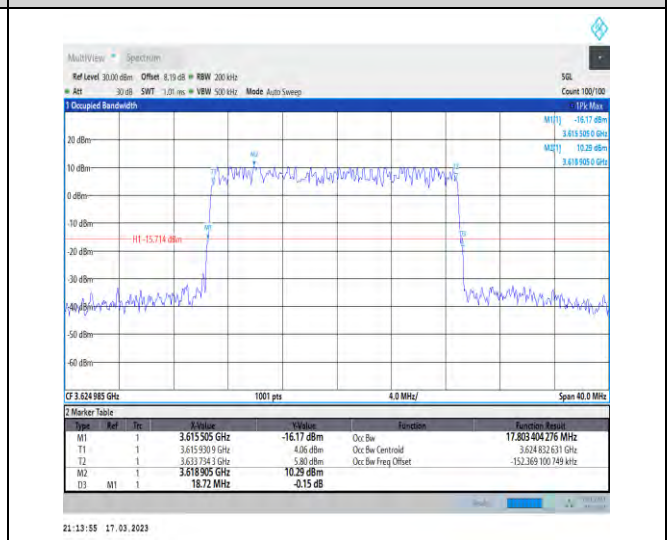
1-N48-PC3-30-20-L-9-CP-256QAM-Outer_Full-51@
0-Ant1-18.281-18.960-≤20-PASS



1-N48-PC3-30-20-M-1-DFT-QPSK-Outer_Full-50@
0-Ant1-17.81-18.720-≤20-PASS



1-N48-PC3-30-20-M-2-DFT-PI2BPSK-Outer_Full-50
@0-Ant1-17.802-18.520-≤20-PASS



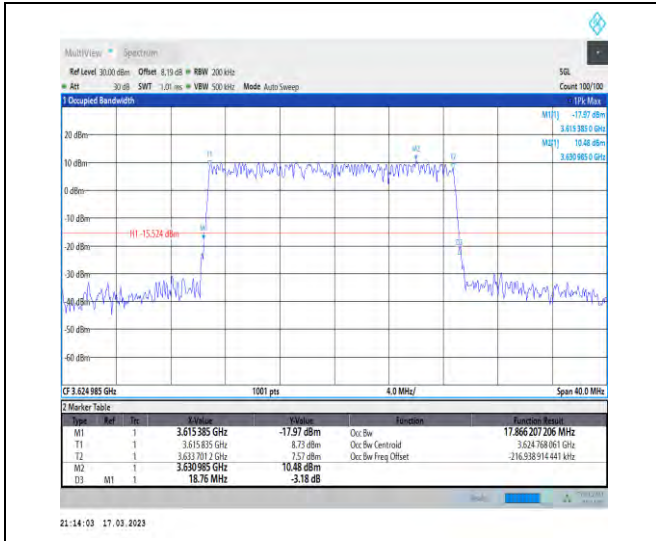
1-N48-PC3-30-20-M-3-DFT-16QAM-Outer_Full-50@
0-Ant1-17.803-18.720-≤20-PASS



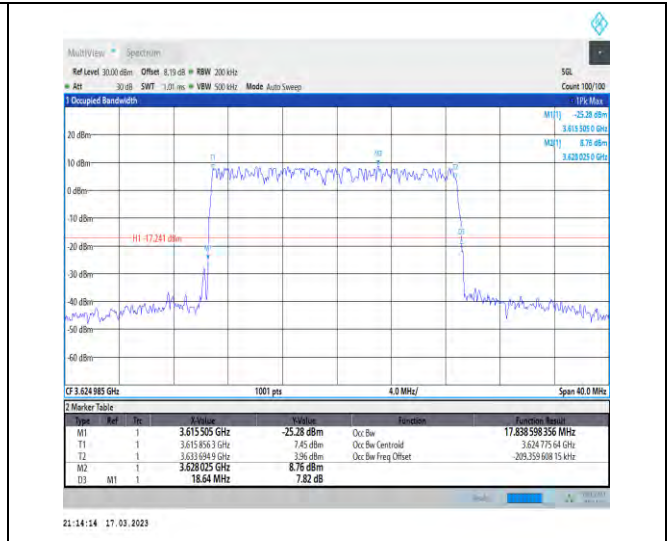
Unless otherwise agreed in writing, this document is issued by the Company subject to its General Conditions of Service printed overleaf, available on request or accessible at <http://www.sgs.com/en/Terms-and-Conditions.aspx> and, for electronic format documents, subject to Terms and Conditions for Electronic Documents at <http://www.sgs.com/en/Terms-and-Conditions/Terms-e-Document.aspx>. Attention is drawn to the limitation of liability, indemnification and jurisdiction issues defined therein. Any holder of this document is advised that information contained hereon reflects the Company's findings at the time of its intervention only and within the limits of Client's instructions, if any. The Company's sole responsibility is to its Client and this document does not exonerate parties to a transaction from exercising all their rights and obligations under the transaction documents. This document cannot be reproduced except in full, without prior written approval of the Company. Any unauthorized alteration, forgery or falsification of the content or appearance of this document is unlawful and offenders may be prosecuted to the fullest extent of the law. Unless otherwise stated the results shown in this test report refer only to the sample(s) tested and such sample(s) are retained for 30 days only.

Attention: To check the authenticity of testing/inspection report & certificate, please contact us at telephone: (86-755) 83071443, or email: CN.Doccheck@sgs.com

No.1 Workshop, M-10, Middle Section, Science & Technology Park, Shenzhen, China 518057 t (86-755) 26012053 f (86-755) 26710594 www.sgs.com.cn
 中国·深圳·科技园中区M-10栋一号厂房 邮编: 518057 t (86-755) 26012053 f (86-755) 26710594 sgs.china@sgs.com



1-N48-PC3-30-20-M-4-DFT-64QAM-Outer_Full-50@
0-Ant1-17.866-18.760-<=20-PASS



1-N48-PC3-30-20-M-5-DFT-256QAM-Outer_Full-50
@0-Ant1-17.839-18.640-<=20-PASS



1-N48-PC3-30-20-M-6-CP-QPSK-Outer_Full-51@0-
Ant1-18.192-18.960-<=20-PASS



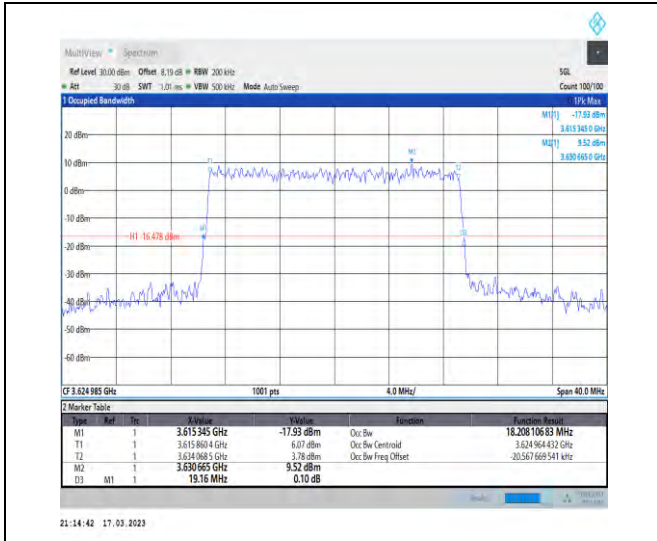
1-N48-PC3-30-20-M-7-CP-16QAM-Outer_Full-51@0-
-Ant1-18.138-18.920-<=20-PASS



Unless otherwise agreed in writing, this document is issued by the Company subject to its General Conditions of Service printed overleaf, available on request or accessible at <http://www.sgs.com/en/Terms-and-Conditions.aspx> and, for electronic format documents, subject to Terms and Conditions for Electronic Documents at <http://www.sgs.com/en/Terms-and-Conditions/Terms-e-Documents.aspx>. Attention is drawn to the limitation of liability, indemnification and jurisdiction issues defined therein. Any holder of this document is advised that information contained hereon reflects the Company's findings at the time of its intervention only and within the limits of Client's instructions, if any. The Company's sole responsibility is to its Client and this document does not exonerate parties to a transaction from exercising all their rights and obligations under the transaction documents. This document cannot be reproduced except in full, without prior written approval of the Company. Any unauthorized alteration, forgery or falsification of the content or appearance of this document is unlawful and offenders may be prosecuted to the fullest extent of the law. Unless otherwise stated the results shown in this test report refer only to the sample(s) tested and such sample(s) are retained for 30 days only.

Attention: To check the authenticity of testing/inspection report & certificate, please contact us at telephone: (86-755) 83071443, or email: CN.Doccheck@sgs.com

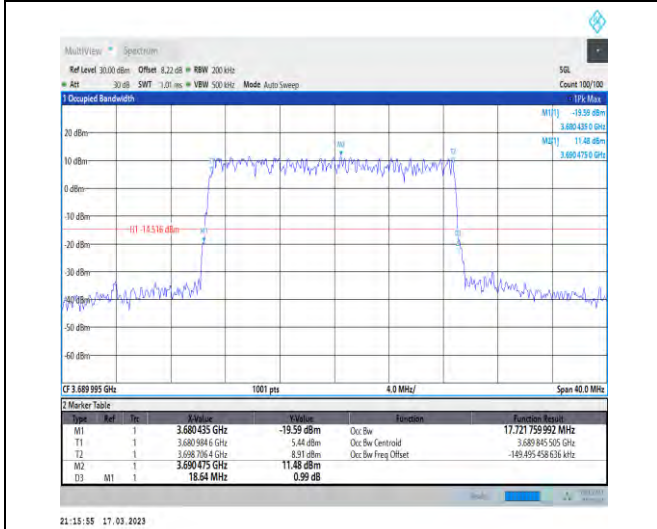
No.1 Workshop, M-10, Middle Section, Science & Technology Park, Shenzhen, China 518057 t (86-755) 26012053 f (86-755) 26710594 www.sgs.com.cn
 中国·深圳·科技园中区M-10栋一号厂房 邮编: 518057 t (86-755) 26012053 f (86-755) 26710594 sgs.china@sgs.com



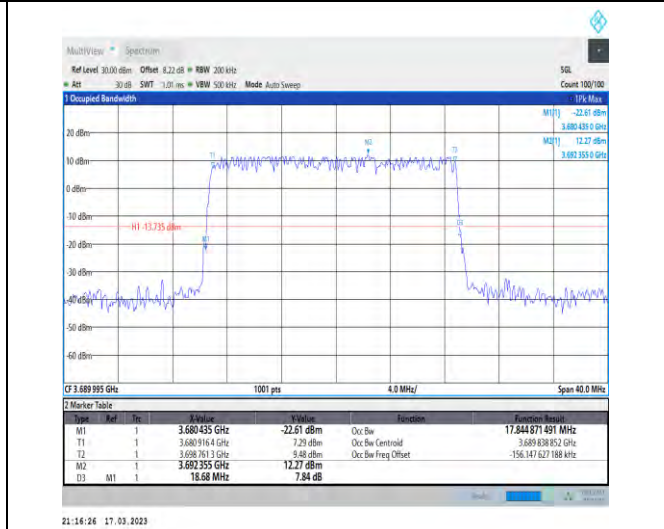
1-N48-PC3-30-20-M-8-CP-64QAM-Outer_Full-51@0-Ant1-18.208-19.160-≤20-PASS



1-N48-PC3-30-20-M-9-CP-256QAM-Outer_Full-51@0-Ant1-18.223-19.200-≤20-PASS



1-N48-PC3-30-20-H-1-DFT-QPSK-Outer_Full-50@0-Ant1-17.722-18.640-≤20-PASS

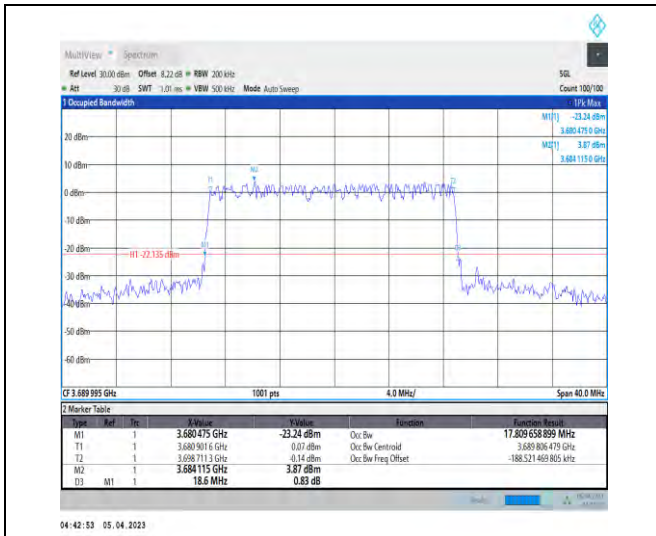


1-N48-PC3-30-20-H-2-DFT-PI2BPSK-Outer_Full-50@0-Ant1-17.845-18.680-≤20-PASS



Unless otherwise agreed in writing, this document is issued by the Company subject to its General Conditions of Service printed overleaf, available on request or accessible at <http://www.sgs.com/en/Terms-and-Conditions.aspx> and, for electronic format documents, subject to Terms and Conditions for Electronic Documents at <http://www.sgs.com/en/Terms-and-Conditions/Terms-e-Document.aspx>. Attention is drawn to the limitation of liability, indemnification and jurisdiction issues defined therein. Any holder of this document is advised that information contained hereon reflects the Company's findings at the time of its intervention only and within the limits of Client's instructions, if any. The Company's sole responsibility is to its Client and this document does not exonerate parties to a transaction from exercising all their rights and obligations under the transaction documents. This document cannot be reproduced except in full, without prior written approval of the Company. Any unauthorized alteration, forgery or falsification of the content or appearance of this document is unlawful and offenders may be prosecuted to the fullest extent of the law. Unless otherwise stated the results shown in this test report refer only to the sample(s) tested and such sample(s) are retained for 30 days only.

Attention: To check the authenticity of testing/inspection report & certificate, please contact us at telephone: (86-755) 83071443, or email: CN.Doccheck@sgs.com



1-N48-PC3-30-20-H-3-DFT-16QAM-Outer_Full-50@
0-Ant1-3.071-3.320-≤20-PASS



1-N48-PC3-30-20-H-4-DFT-64QAM-Outer_Full-50@
0-Ant1-7.442-7.720-≤20-PASS



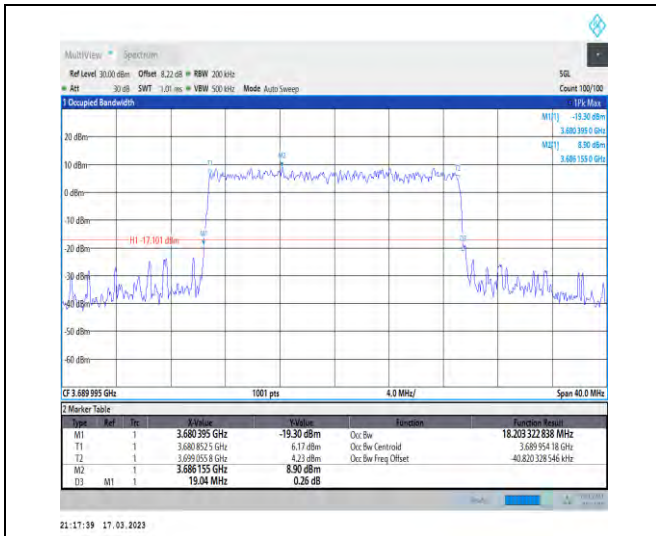
1-N48-PC3-30-20-H-5-DFT-256QAM-Outer_Full-50
@0-Ant1-12.67-13.160-≤20-PASS



1-N48-PC3-30-20-H-6-CP-QPSK-Outer_Full-51@0-
Ant1-18.2-19.120-≤20-PASS



Unless otherwise agreed in writing, this document is issued by the Company subject to its General Conditions of Service printed overleaf, available on request or accessible at <http://www.sgs.com/en/Terms-and-Conditions.aspx> and, for electronic format documents, subject to Terms and Conditions for Electronic Documents at <http://www.sgs.com/en/Terms-and-Conditions/Terms-e-Documents.aspx>. Attention is drawn to the limitation of liability, indemnification and jurisdiction issues defined therein. Any holder of this document is advised that information contained hereon reflects the Company's findings at the time of its intervention only and within the limits of Client's instructions, if any. The Company's sole responsibility is to its Client and this document does not exonerate parties to a transaction from exercising all their rights and obligations under the transaction documents. This document cannot be reproduced except in full, without prior written approval of the Company. Any unauthorized alteration, forgery or falsification of the content or appearance of this document is unlawful and offenders may be prosecuted to the fullest extent of the law. Unless otherwise stated the results shown in this test report refer only to the sample(s) tested and such sample(s) are retained for 30 days only.
Attention: To check the authenticity of testing/inspection report & certificate, please contact us at telephone: (86-755) 83071443, or email: CN.Doccheck@sgs.com



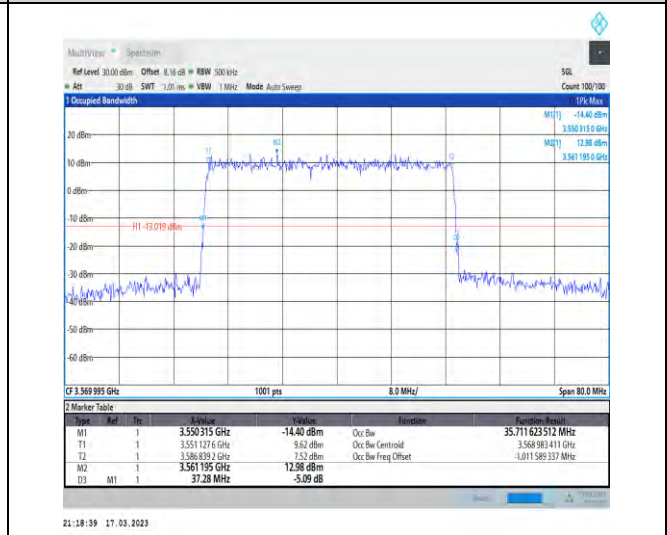
1-N48-PC3-30-20-H-7-CP-16QAM-Outer_Full-51@0
-Ant1-18.203-19.040-≤20-PASS



1-N48-PC3-30-20-H-8-CP-64QAM-Outer_Full-51@0
-Ant1-18.231-18.960-≤20-PASS



1-N48-PC3-30-20-H-9-CP-256QAM-Outer_Full-51@0
0-Ant1-18.218-19.040-≤20-PASS



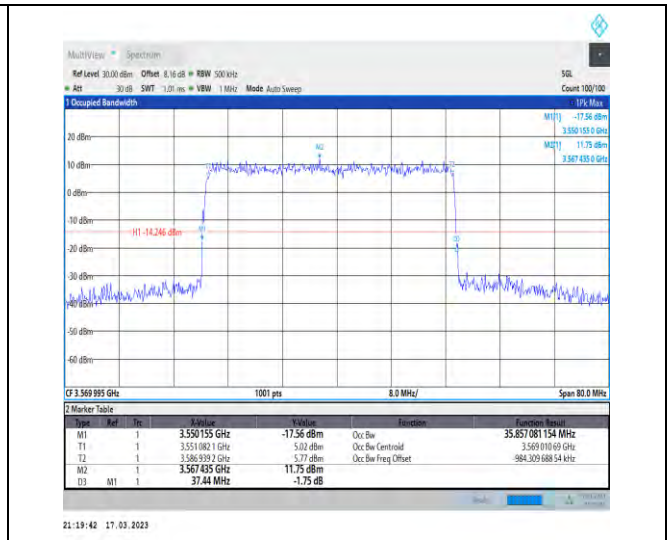
1-N48-PC3-30-40-L-1-DFT-QPSK-Outer_Full-100@0
0-Ant1-35.712-37.280-≤40-PASS



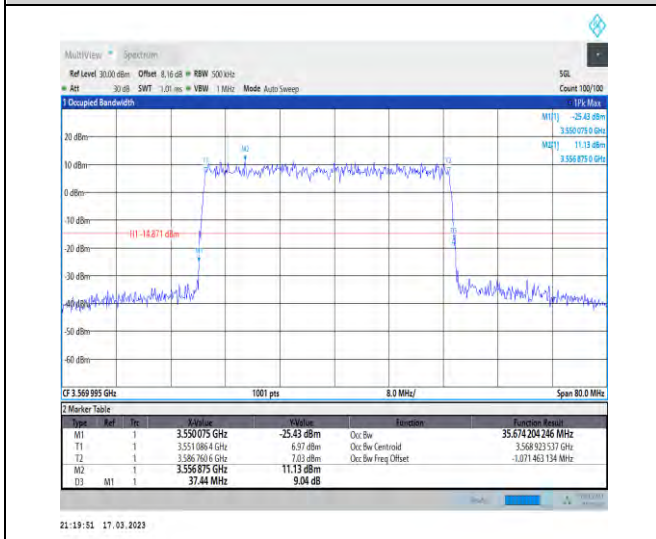
Unless otherwise agreed in writing, this document is issued by the Company subject to its General Conditions of Service printed overleaf, available on request or accessible at <http://www.sgs.com/en/Terms-and-Conditions.aspx> and, for electronic format documents, subject to Terms and Conditions for Electronic Documents at <http://www.sgs.com/en/Terms-and-Conditions/Terms-e-Documents.aspx>. Attention is drawn to the limitation of liability, indemnification and jurisdiction issues defined therein. Any holder of this document is advised that information contained hereon reflects the Company's findings at the time of its intervention only and within the limits of Client's instructions, if any. The Company's sole responsibility is to its Client and this document does not exonerate parties to a transaction from exercising all their rights and obligations under the transaction documents. This document cannot be reproduced except in full, without prior written approval of the Company. Any unauthorized alteration, forgery or falsification of the content or appearance of this document is unlawful and offenders may be prosecuted to the fullest extent of the law. Unless otherwise stated the results shown in this test report refer only to the sample(s) tested and such sample(s) are retained for 30 days only.
Attention: To check the authenticity of testing/inspection report & certificate, please contact us at telephone: (86-755) 83071443, or email: CN.Doccheck@sgs.com



1-N48-PC3-30-40-L-2-DFT-PI2BPSK-Outer_Full-100
@0-Ant1-35.765-37.600-≤40-PASS



1-N48-PC3-30-40-L-3-DFT-16QAM-Outer_Full-100
@0-Ant1-35.857-37.440-≤40-PASS



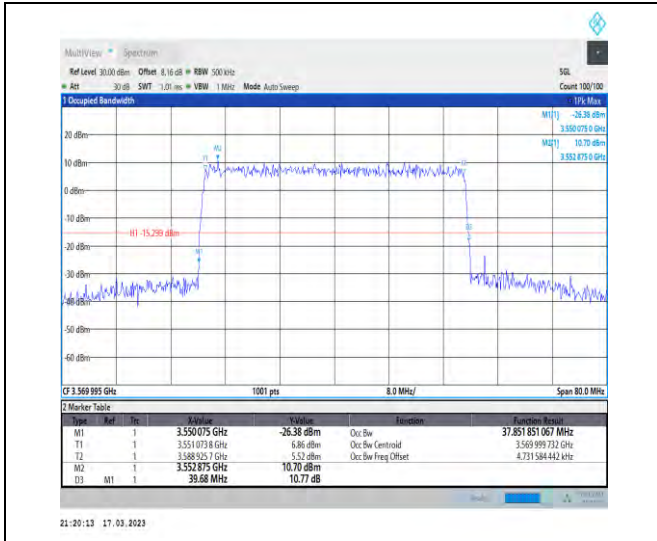
1-N48-PC3-30-40-L-4-DFT-64QAM-Outer_Full-100
@0-Ant1-35.674-37.440-≤40-PASS



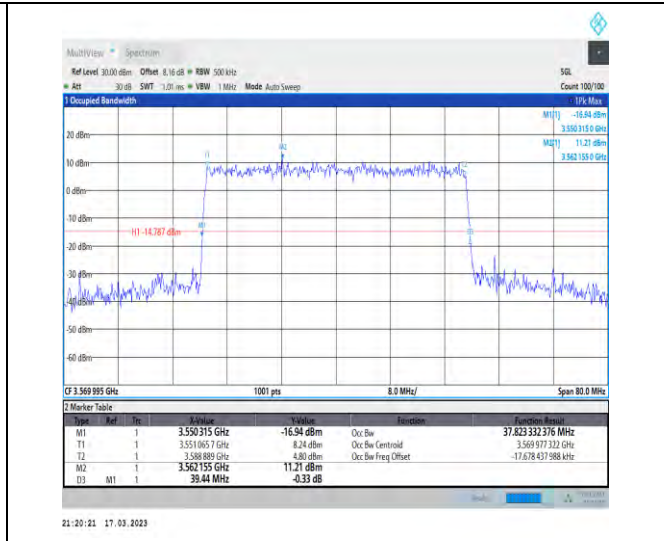
1-N48-PC3-30-40-L-5-DFT-256QAM-Outer_Full-100
@0-Ant1-35.73-37.520-≤40-PASS



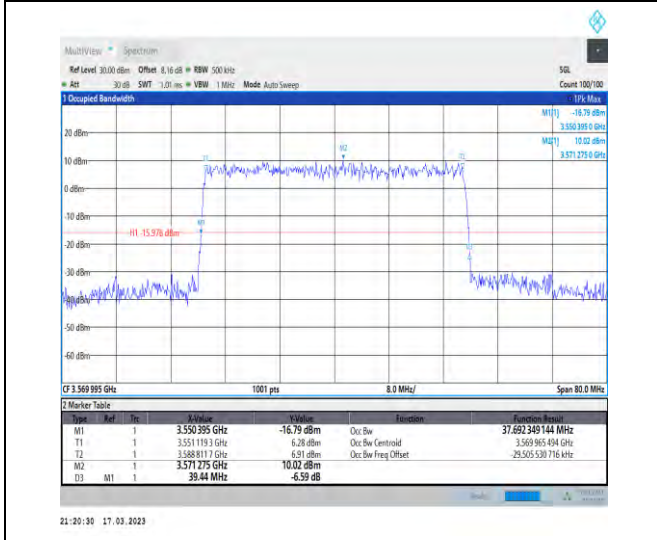
Unless otherwise agreed in writing, this document is issued by the Company subject to its General Conditions of Service printed overleaf, available on request or accessible at <http://www.sgs.com/en/Terms-and-Conditions.aspx> and, for electronic format documents, subject to Terms and Conditions for Electronic Documents at <http://www.sgs.com/en/Terms-and-Conditions/Terms-e-Documents.aspx>. Attention is drawn to the limitation of liability, indemnification and jurisdiction issues defined therein. Any holder of this document is advised that information contained hereon reflects the Company's findings at the time of its intervention only and within the limits of Client's instructions, if any. The Company's sole responsibility is to its Client and this document does not exonerate parties to a transaction from exercising all their rights and obligations under the transaction documents. This document cannot be reproduced except in full, without prior written approval of the Company. Any unauthorized alteration, forgery or falsification of the content or appearance of this document is unlawful and offenders may be prosecuted to the fullest extent of the law. Unless otherwise stated the results shown in this test report refer only to the sample(s) tested and such sample(s) are retained for 30 days only.
Attention: To check the authenticity of testing/inspection report & certificate, please contact us at telephone: (86-755) 83071443, or email: CN.Doccheck@sgs.com



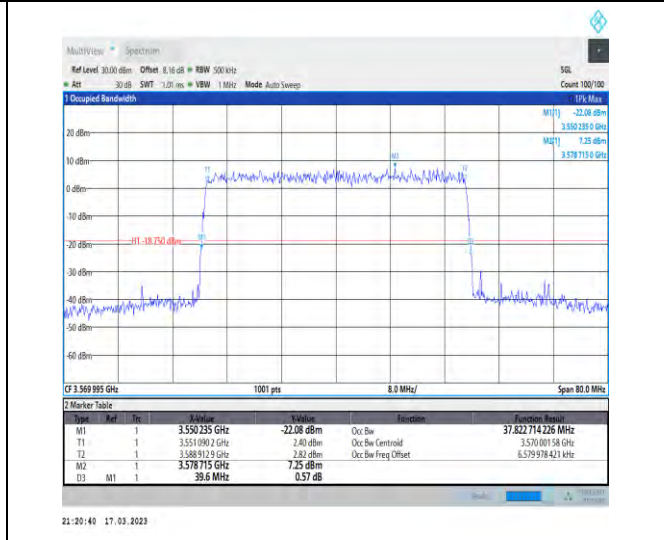
1-N48-PC3-30-40-L-6-CP-QPSK-Outer_Full-106@0-Ant1-37.852-39.680-≤ 40-PASS



1-N48-PC3-30-40-L-7-CP-16QAM-Outer_Full-106@0-Ant1-37.823-39.440-≤ 40-PASS



1-N48-PC3-30-40-L-8-CP-64QAM-Outer_Full-106@0-Ant1-37.692-39.440-≤ 40-PASS



1-N48-PC3-30-40-L-9-CP-256QAM-Outer_Full-106@0-Ant1-37.823-39.600-≤ 40-PASS



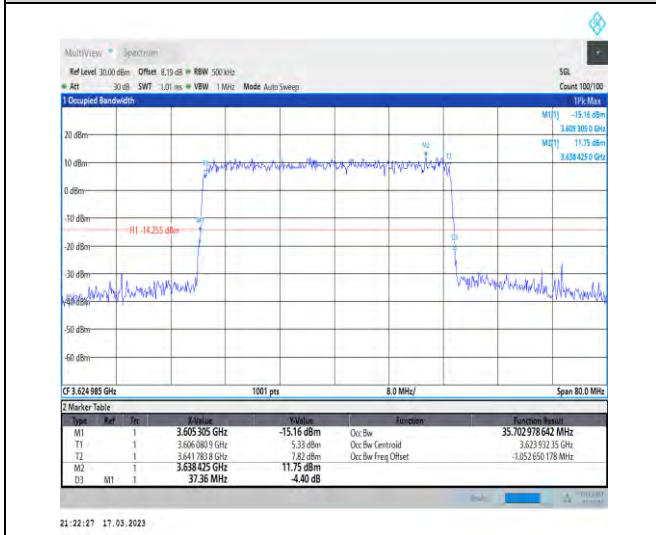
Unless otherwise agreed in writing, this document is issued by the Company subject to its General Conditions of Service printed overleaf, available on request or accessible at <http://www.sgs.com/en/Terms-and-Conditions.aspx> and, for electronic format documents, subject to Terms and Conditions for Electronic Documents at <http://www.sgs.com/en/Terms-and-Conditions/Terms-e-Document.aspx>. Attention is drawn to the limitation of liability, indemnification and jurisdiction issues defined therein. Any holder of this document is advised that information contained hereon reflects the Company's findings at the time of its intervention only and within the limits of Client's instructions, if any. The Company's sole responsibility is to its Client and this document does not exonerate parties to a transaction from exercising all their rights and obligations under the transaction documents. This document cannot be reproduced except in full, without prior written approval of the Company. Any unauthorized alteration, forgery or falsification of the content or appearance of this document is unlawful and offenders may be prosecuted to the fullest extent of the law. Unless otherwise stated the results shown in this test report refer only to the sample(s) tested and such sample(s) are retained for 30 days only.
Attention: To check the authenticity of testing/inspection report & certificate, please contact us at telephone: (86-755) 8307 1443, or email: CN.Doccheck@sgs.com



1-N48-PC3-30-40-M-1-DFT-QPSK-Outer_Full-100@
0-Ant1-35.621-37.440-≤40-PASS



1-N48-PC3-30-40-M-2-DFT-PI2BPSK-Outer_Full-100@
0-Ant1-35.711-37.440-≤40-PASS



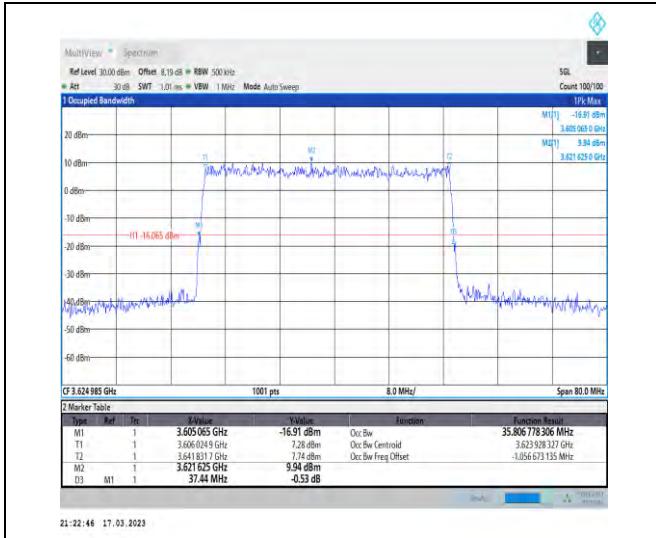
1-N48-PC3-30-40-M-3-DFT-16QAM-Outer_Full-100@
0-Ant1-35.703-37.360-≤40-PASS



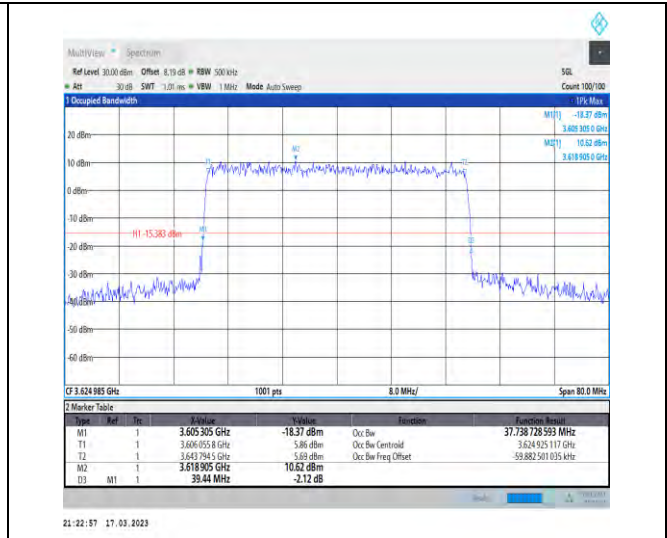
1-N48-PC3-30-40-M-4-DFT-64QAM-Outer_Full-100@
0-Ant1-35.795-37.440-≤40-PASS



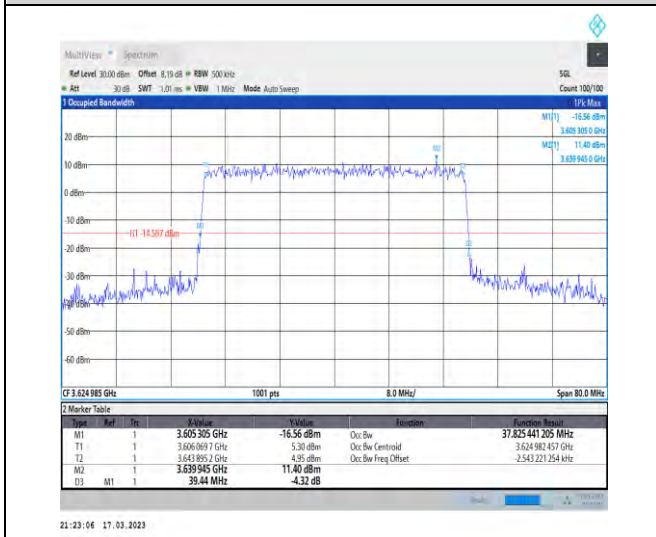
Unless otherwise agreed in writing, this document is issued by the Company subject to its General Conditions of Service printed overleaf, available on request or accessible at <http://www.sgs.com/en/Terms-and-Conditions.aspx> and, for electronic format documents, subject to Terms and Conditions for Electronic Documents at <http://www.sgs.com/en/Terms-and-Conditions/Terms-e-Document.aspx>. Attention is drawn to the limitation of liability, indemnification and jurisdiction issues defined therein. Any holder of this document is advised that information contained hereon reflects the Company's findings at the time of its intervention only and within the limits of Client's instructions, if any. The Company's sole responsibility is to its Client and this document does not exonerate parties to a transaction from exercising all their rights and obligations under the transaction documents. This document cannot be reproduced except in full, without prior written approval of the Company. Any unauthorized alteration, forgery or falsification of the content or appearance of this document is unlawful and offenders may be prosecuted to the fullest extent of the law. Unless otherwise stated the results shown in this test report refer only to the sample(s) tested and such sample(s) are retained for 30 days only.
Attention: To check the authenticity of testing/inspection report & certificate, please contact us at telephone: (86-755) 83071443, or email: CN.Doccheck@sgs.com



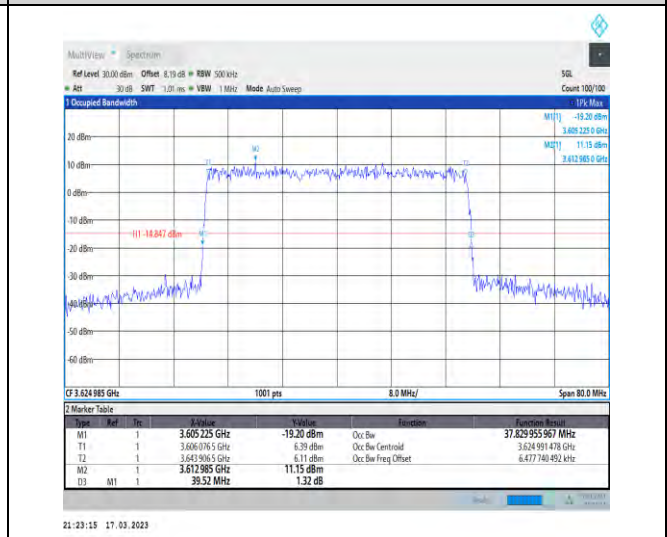
1-N48-PC3-30-40-M-5-DFT-256QAM-Outer_Full-100 @0-Ant1-35.807-37.440-≤40-PASS



1-N48-PC3-30-40-M-6-CP-QPSK-Outer_Full-106@0 -Ant1-37.739-39.440-≤40-PASS



1-N48-PC3-30-40-M-7-CP-16QAM-Outer_Full-106@0-Ant1-37.825-39.440-≤40-PASS



1-N48-PC3-30-40-M-8-CP-64QAM-Outer_Full-106@0-Ant1-37.83-39.520-≤40-PASS



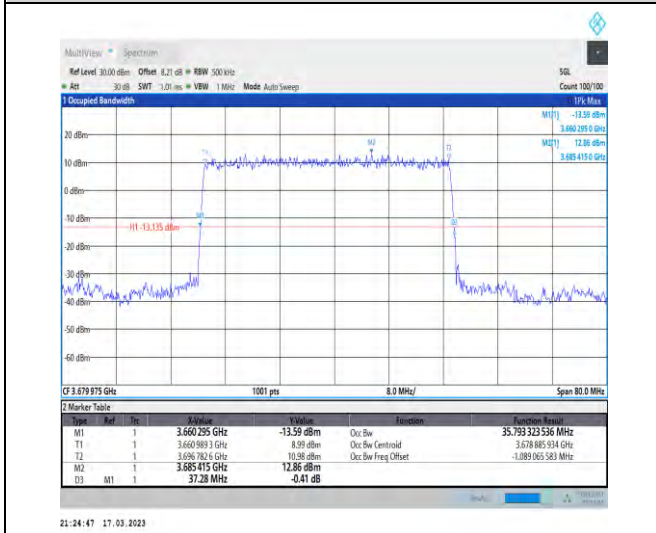
Unless otherwise agreed in writing, this document is issued by the Company subject to its General Conditions of Service printed overleaf, available on request or accessible at <http://www.sgs.com/en/Terms-and-Conditions.aspx> and, for electronic format documents, subject to Terms and Conditions for Electronic Documents at <http://www.sgs.com/en/Terms-and-Conditions/Terms-e-Documents.aspx>. Attention is drawn to the limitation of liability, indemnification and jurisdiction issues defined therein. Any holder of this document is advised that information contained hereon reflects the Company's findings at the time of its intervention only and within the limits of Client's instructions, if any. The Company's sole responsibility is to its Client and this document does not exonerate parties to a transaction from exercising all their rights and obligations under the transaction documents. This document cannot be reproduced except in full, without prior written approval of the Company. Any unauthorized alteration, forgery or falsification of the content or appearance of this document is unlawful and offenders may be prosecuted to the fullest extent of the law. Unless otherwise stated the results shown in this test report refer only to the sample(s) tested and such sample(s) are retained for 30 days only.
Attention: To check the authenticity of testing/inspection report & certificate, please contact us at telephone: (86-755) 83071443, or email: CN.Doccheck@sgs.com



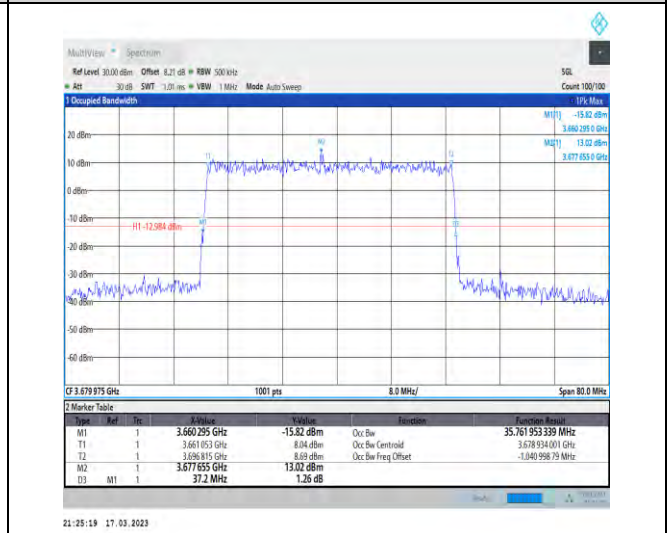
1-N48-PC3-30-40-M-9-CP-256QAM-Outer_Full-106
@0-Ant1-37.926-39.600-≤40-PASS



1-N48-PC3-30-40-H-1-DFT-QPSK-Outer_Full-100@
0-Ant1-35.755-37.200-≤40-PASS



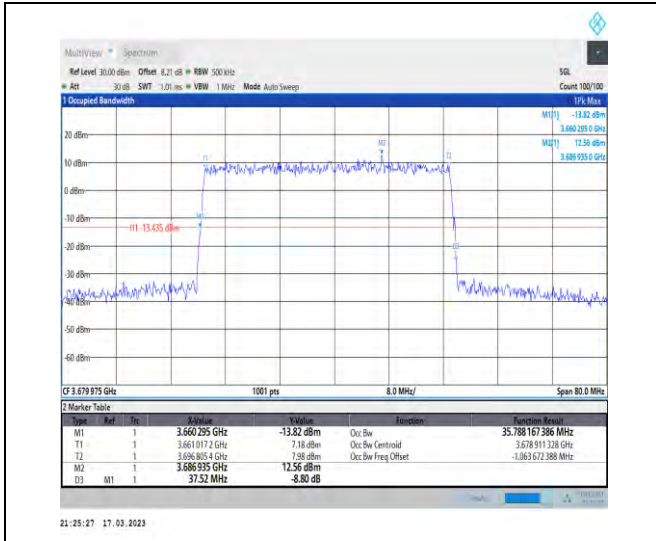
1-N48-PC3-30-40-H-2-DFT-PI2BPSK-Outer_Full-100
@0-Ant1-35.793-37.280-≤40-PASS



1-N48-PC3-30-40-H-3-DFT-16QAM-Outer_Full-100
@0-Ant1-35.762-37.200-≤40-PASS

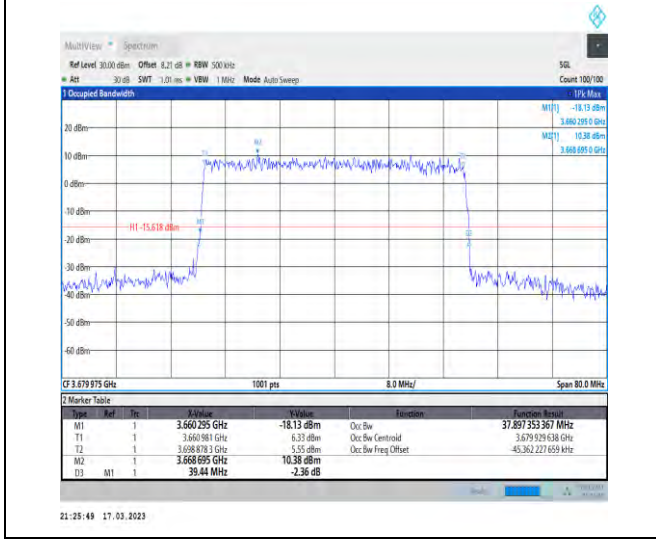


Unless otherwise agreed in writing, this document is issued by the Company subject to its General Conditions of Service printed overleaf, available on request or accessible at <http://www.sgs.com/en/Terms-and-Conditions.aspx> and, for electronic format documents, subject to Terms and Conditions for Electronic Documents at <http://www.sgs.com/en/Terms-and-Conditions/Terms-e-Document.aspx>. Attention is drawn to the limitation of liability, indemnification and jurisdiction issues defined therein. Any holder of this document is advised that information contained hereon reflects the Company's findings at the time of its intervention only and within the limits of Client's instructions, if any. The Company's sole responsibility is to its Client and this document does not exonerate parties to a transaction from exercising all their rights and obligations under the transaction documents. This document cannot be reproduced except in full, without prior written approval of the Company. Any unauthorized alteration, forgery or falsification of the content or appearance of this document is unlawful and offenders may be prosecuted to the fullest extent of the law. Unless otherwise stated the results shown in this test report refer only to the sample(s) tested and such sample(s) are retained for 30 days only.
Attention: To check the authenticity of testing/inspection report & certificate, please contact us at telephone: (86-755) 83071443, or email: CN.Doccheck@sgs.com



1-N48-PC3-30-40-H-4-DFT-64QAM-Outer_Full-100
@0-Ant1-35.788-37.520-≤40-PASS

1-N48-PC3-30-40-H-5-DFT-256QAM-Outer_Full-100
@0-Ant1-35.816-37.360-≤40-PASS



1-N48-PC3-30-40-H-6-CP-QPSK-Outer_Full-106@0
-Ant1-37.897-39.440-≤40-PASS

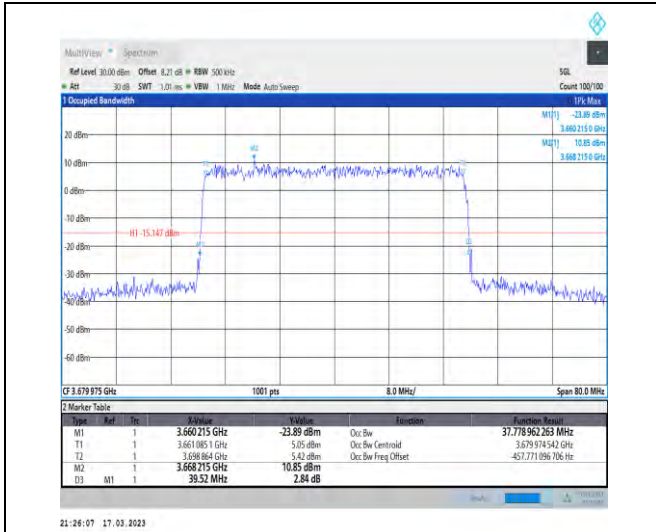
1-N48-PC3-30-40-H-7-CP-16QAM-Outer_Full-106@0
0-Ant1-37.748-39.520-≤40-PASS



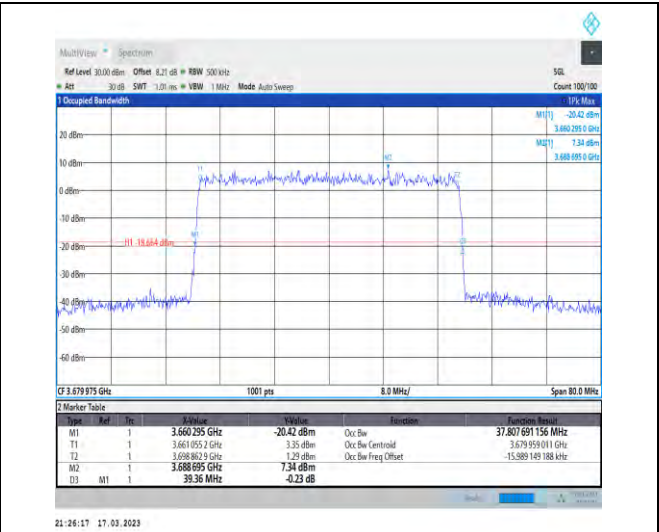
Unless otherwise agreed in writing, this document is issued by the Company subject to its General Conditions of Service printed overleaf, available on request or accessible at <http://www.sgs.com/en/Terms-and-Conditions.aspx> and, for electronic format documents, subject to Terms and Conditions for Electronic Documents at <http://www.sgs.com/en/Terms-and-Conditions/Terms-e-Document.aspx>. Attention is drawn to the limitation of liability, indemnification and jurisdiction issues defined therein. Any holder of this document is advised that information contained hereon reflects the Company's findings at the time of its intervention only and within the limits of Client's instructions, if any. The Company's sole responsibility is to its Client and this document does not exonerate parties to a transaction from exercising all their rights and obligations under the transaction documents. This document cannot be reproduced except in full, without prior written approval of the Company. Any unauthorized alteration, forgery or falsification of the content or appearance of this document is unlawful and offenders may be prosecuted to the fullest extent of the law. Unless otherwise stated the results shown in this test report refer only to the sample(s) tested and such sample(s) are retained for 30 days only.

Attention: To check the authenticity of testing/inspection report & certificate, please contact us at telephone: (86-755) 83071443, or email: CN.Doccheck@sgs.com

No.1 Workshop, M-10, Middle Section, Science & Technology Park, Shenzhen, China 518057 t (86-755) 26012053 f (86-755) 26710594 www.sgs.com.cn
中国·深圳·科技园中区M-10栋一号厂房 邮编: 518057 t (86-755) 26012053 f (86-755) 26710594 sgs.china@sgs.com



1-N48-PC3-30-40-H-8-CP-64QAM-Outer_Full-106@
0-Ant1-37.779-39.520-≤40-PASS



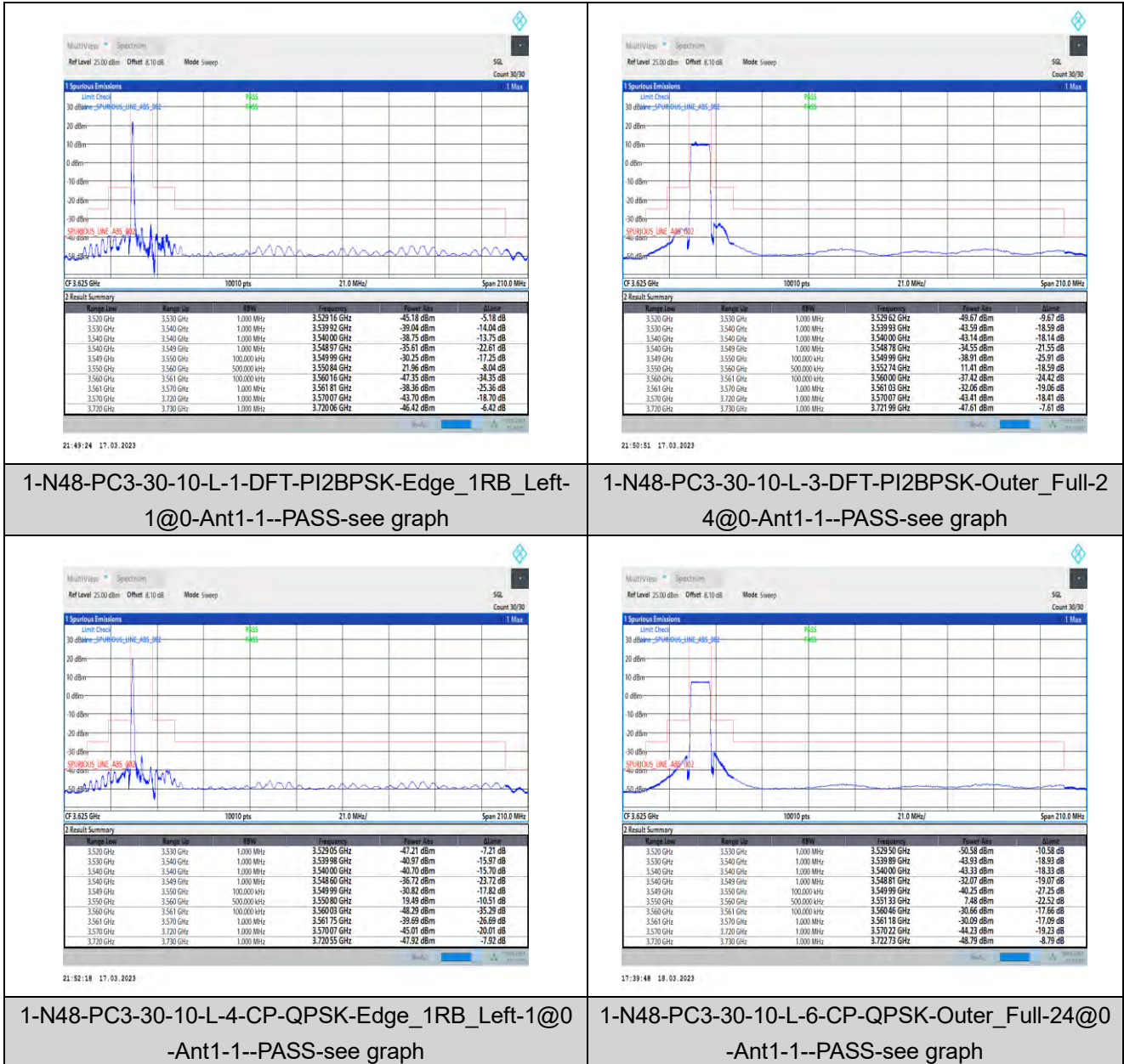
1-N48-PC3-30-40-H-9-CP-256QAM-Outer_Full-106
@0-Ant1-37.808-39.360-≤40-PASS



Unless otherwise agreed in writing, this document is issued by the Company subject to its General Conditions of Service printed overleaf, available on request or accessible at <http://www.sgs.com/en/Terms-and-Conditions.aspx> and, for electronic format documents, subject to Terms and Conditions for Electronic Documents at <http://www.sgs.com/en/Terms-and-Conditions/Terms-e-Document.aspx>. Attention is drawn to the limitation of liability, indemnification and jurisdiction issues defined therein. Any holder of this document is advised that information contained hereon reflects the Company's findings at the time of its intervention only and within the limits of Client's instructions, if any. The Company's sole responsibility is to its Client and this document does not exonerate parties to a transaction from exercising all their rights and obligations under the transaction documents. This document cannot be reproduced except in full, without prior written approval of the Company. Any unauthorized alteration, forgery or falsification of the content or appearance of this document is unlawful and offenders may be prosecuted to the fullest extent of the law. Unless otherwise stated the results shown in this test report refer only to the sample(s) tested and such sample(s) are retained for 30 days only.
Attention: To check the authenticity of testing / inspection report & certificate, please contact us at telephone: (86-755) 8307 1443, or email: CN_Doccheck@sgs.com

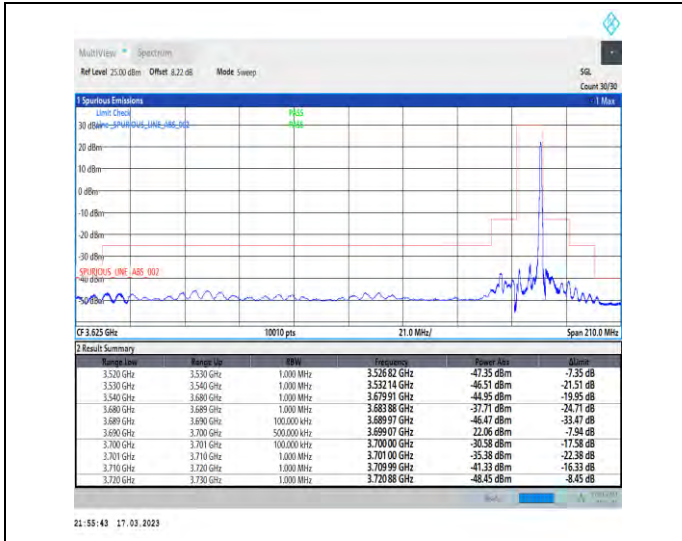
Band Edge for SA

Test Graphs

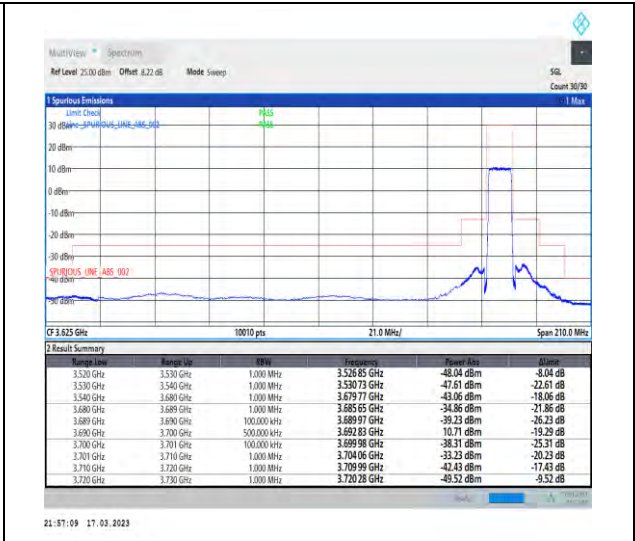


Unless otherwise agreed in writing, this document is issued by the Company subject to its General Conditions of Service printed overleaf, available on request or accessible at <http://www.sgs.com/en/Terms-and-Conditions.aspx> and, for electronic format documents, subject to Terms and Conditions for Electronic Documents at <http://www.sgs.com/en/Terms-and-Conditions/Terms-e-Documents.aspx>. Attention is drawn to the limitation of liability, indemnification and jurisdiction issues defined therein. Any holder of this document is advised that information contained hereon reflects the Company's findings at the time of its intervention only and within the limits of Client's instructions, if any. The Company's sole responsibility is to its Client and this document does not exonerate parties to a transaction from exercising all their rights and obligations under the transaction documents. This document cannot be reproduced except in full, without prior written approval of the Company. Any unauthorized alteration, forgery or falsification of the content or appearance of this document is unlawful and offenders may be prosecuted to the fullest extent of the law. Unless otherwise stated the results shown in this test report refer only to the sample(s) tested and such sample(s) are retained for 30 days only.

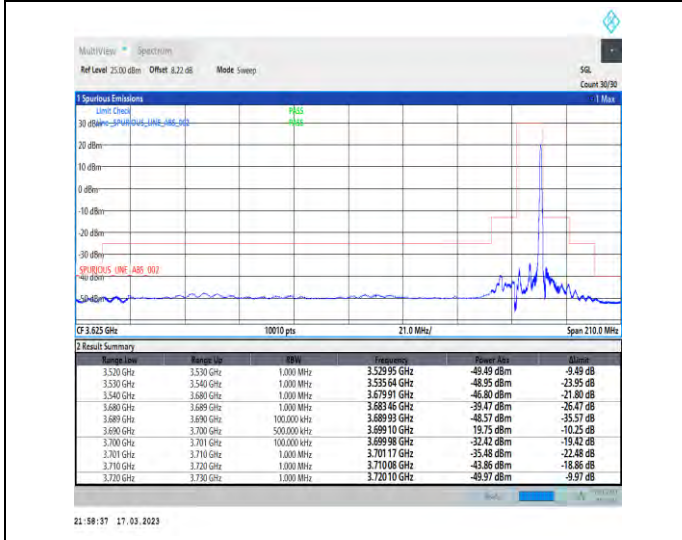
Attention: To check the authenticity of testing/inspection report & certificate, please contact us at telephone: (86-755) 83071443, or email: CN.Doccheck@sgs.com



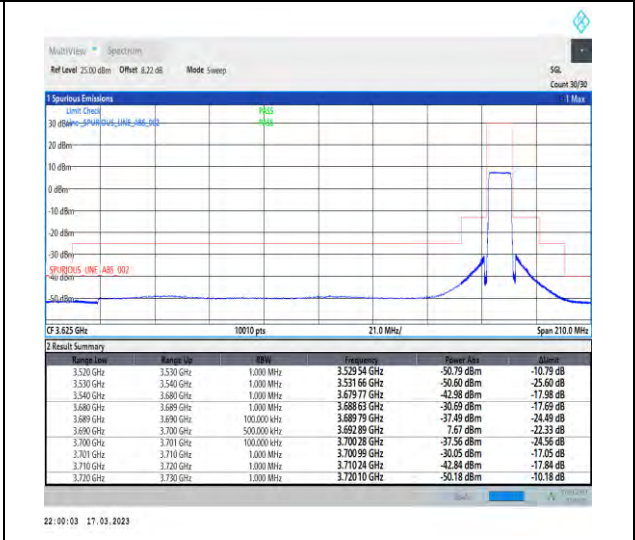
1-N48-PC3-30-10-H-2-DFT-PI2BPSK-Edge_1RB_Right-t-1@23-Ant1-1--PASS-see graph



1-N48-PC3-30-10-H-3-DFT-PI2BPSK-Outer_Full-24@0-Ant1-1--PASS-see graph



1-N48-PC3-30-10-H-5-CP-QPSK-Edge_1RB_Right-1@23-Ant1-1--PASS-see graph



1-N48-PC3-30-10-H-6-CP-QPSK-Outer_Full-24@0-Ant1-1--PASS-see graph



Unless otherwise agreed in writing, this document is issued by the Company subject to its General Conditions of Service printed overleaf, available on request or accessible at <http://www.sgs.com/en/Terms-and-Conditions.aspx> and, for electronic format documents, subject to Terms and Conditions for Electronic Documents at <http://www.sgs.com/en/Terms-and-Conditions/Terms-e-Documents.aspx>. Attention is drawn to the limitation of liability, indemnification and jurisdiction issues defined therein. Any holder of this document is advised that information contained hereon reflects the Company's findings at the time of its intervention only and within the limits of Client's instructions, if any. The Company's sole responsibility is to its Client and this document does not exonerate parties to a transaction from exercising all their rights and obligations under the transaction documents. This document cannot be reproduced except in full, without prior written approval of the Company. Any unauthorized alteration, forgery or falsification of the content or appearance of this document is unlawful and offenders may be prosecuted to the fullest extent of the law. Unless otherwise stated the results shown in this test report refer only to the sample(s) tested and such sample(s) are retained for 30 days only.

Attention: To check the authenticity of testing/inspection report & certificate, please contact us at telephone: (86-755) 83071443, or email: CN.Doccheck@sgs.com
 No.1 Workshop, M-10, Middle Section, Science & Technology Park, Shenzhen, China 518057 t (86-755) 26012053 f (86-755) 26710594 www.sgs.com.cn
 中国·深圳·科技园中区M-10栋一号厂房 邮编: 518057 t (86-755) 26012053 f (86-755) 26710594 sgs.china@sgs.com