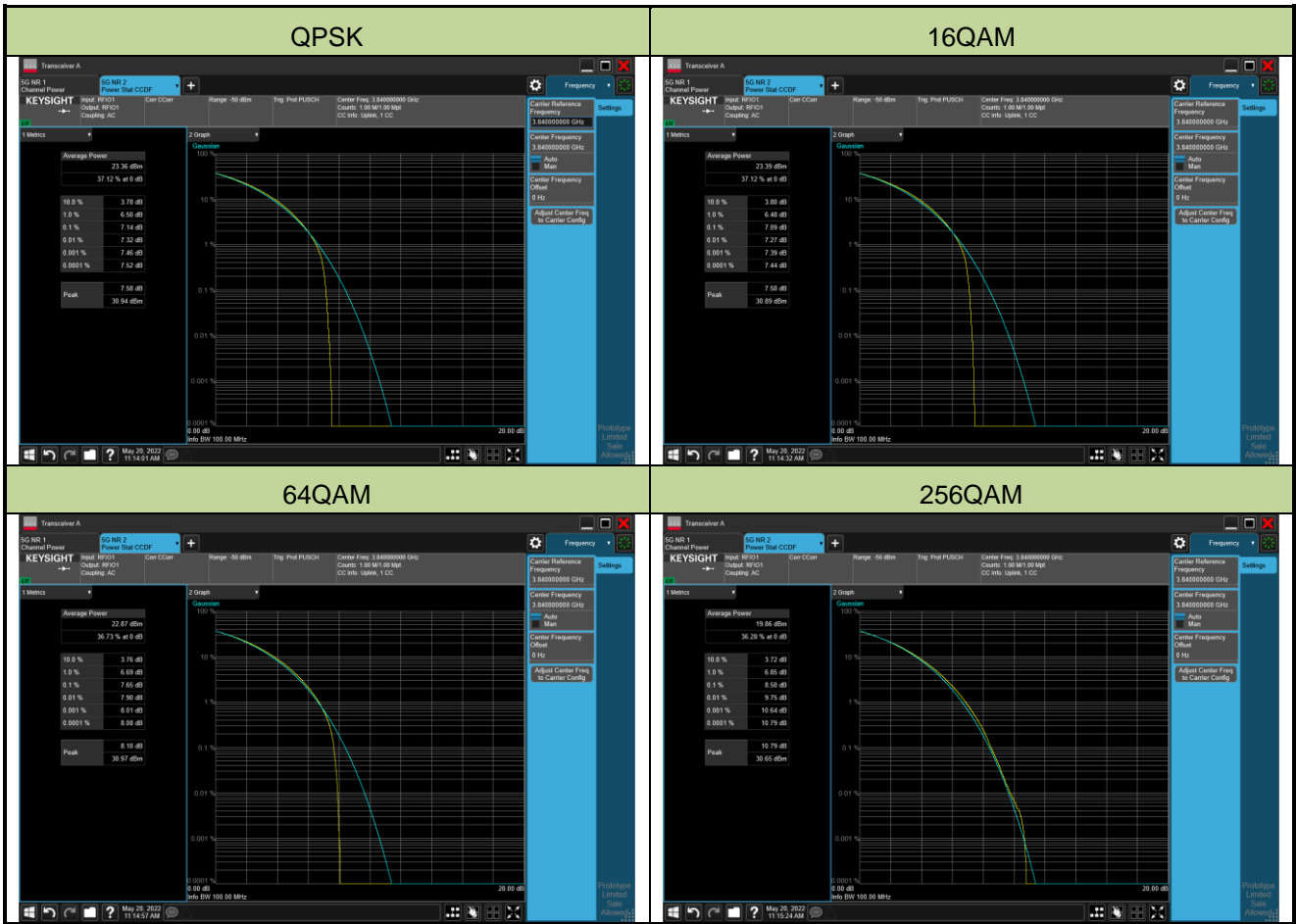


Test Site	SIP-SR1	Test Engineer	Candy Luo
Test Date	2022/05/20	Test Band	n77/n78_SA_HPUE (3700~3980MHz)

Frequency (MHz)	Channel Bandwidth (MHz)	Peak to Average Ratio (dB)	Limit (dB)	Result
QPSK				
3840.00	100	7.14	≤ 13.00	Pass
16QAM				
3840.00	100	7.09	≤ 13.00	Pass
64QAM				
3840.00	100	7.65	≤ 13.00	Pass
256QAM				
3840.00	100	8.50	≤ 13.00	Pass



A.5 Band Edge Test Result

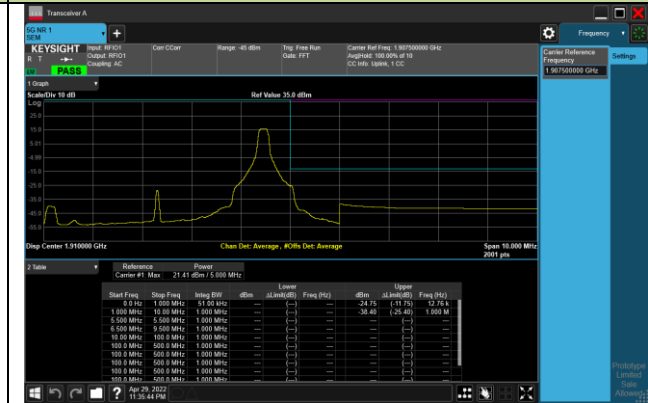
Test Site	SIP-SR1	Test Engineer	Candy Luo
Test Date	2022/04/29	Test Band	n2_SA

5MHz Channel Bandwidth - 1RB

Lower Band Edge



Upper Band Edge

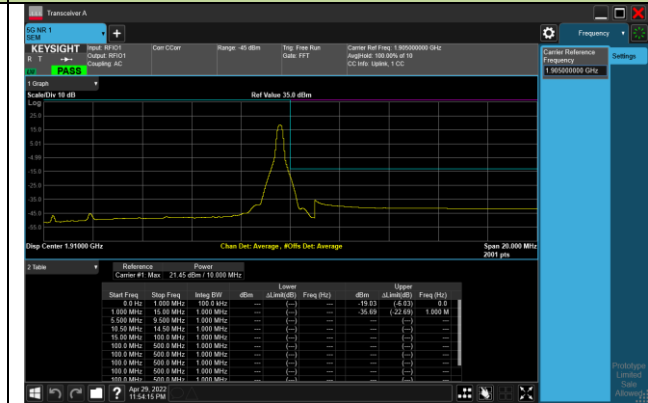


10MHz Channel Bandwidth - 1RB

Lower Band Edge

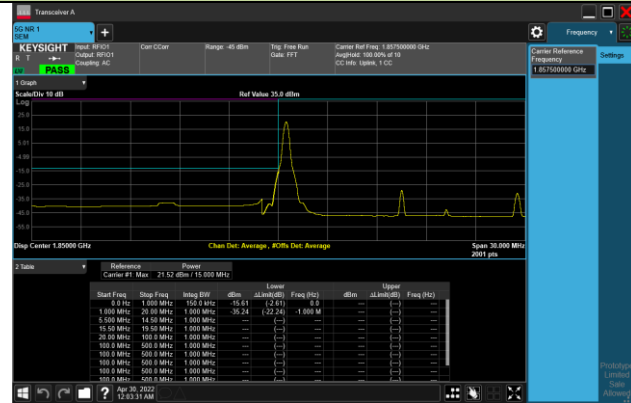


Upper Band Edge



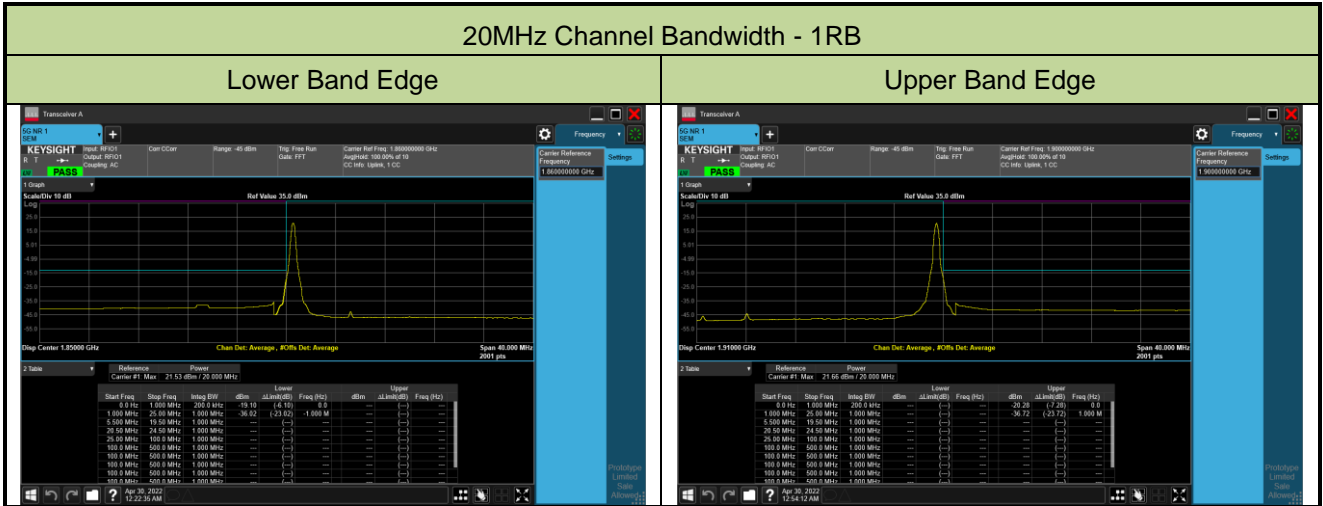
15MHz Channel Bandwidth - 1RB

Lower Band Edge



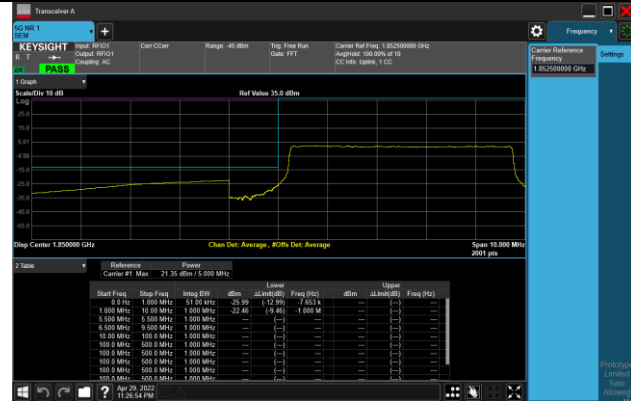
Upper Band Edge



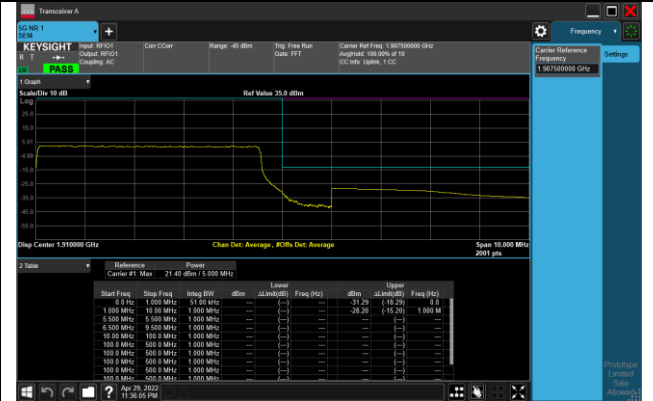


5MHz Channel Bandwidth - Full RB

Lower Band Edge



Upper Band Edge



10MHz Channel Bandwidth - Full RB

Lower Band Edge

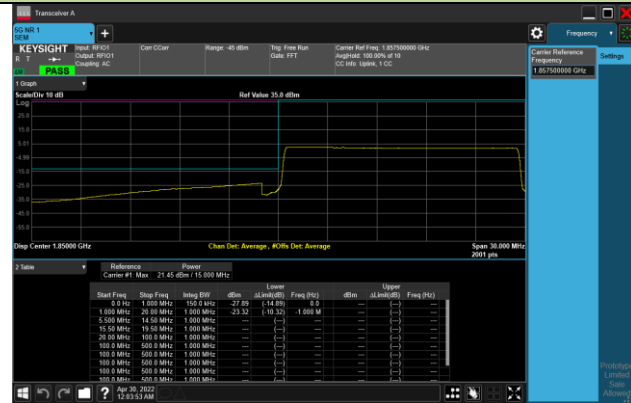


Upper Band Edge



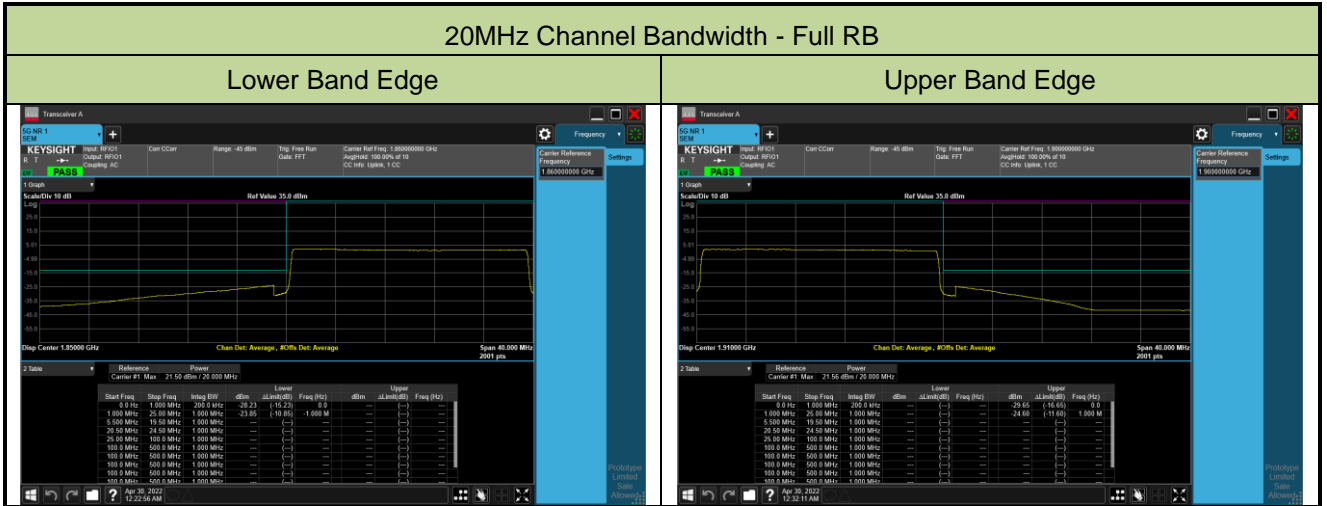
15MHz Channel Bandwidth - Full RB

Lower Band Edge

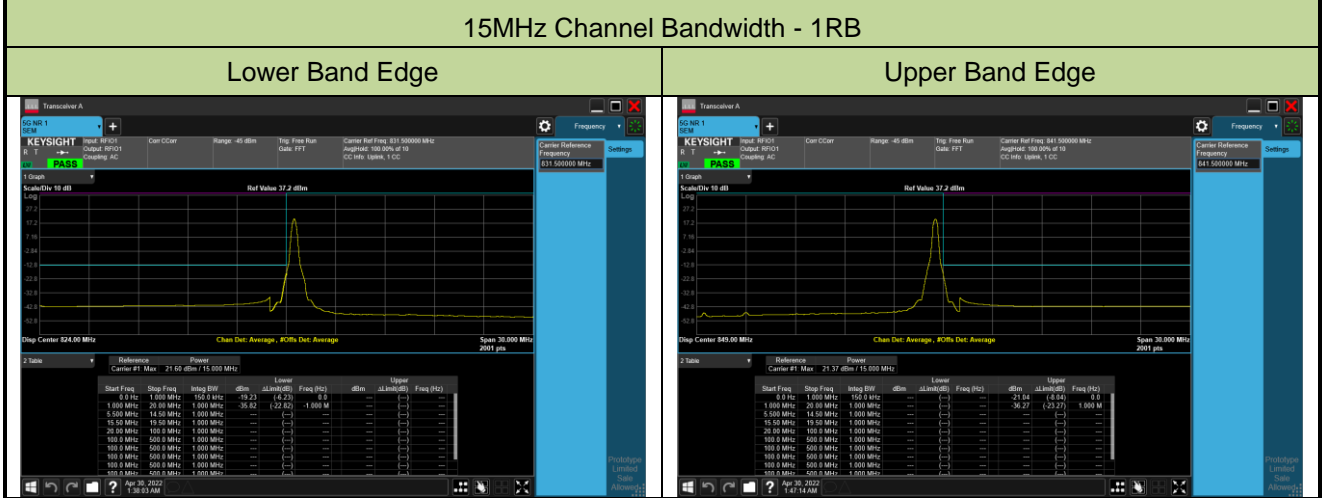
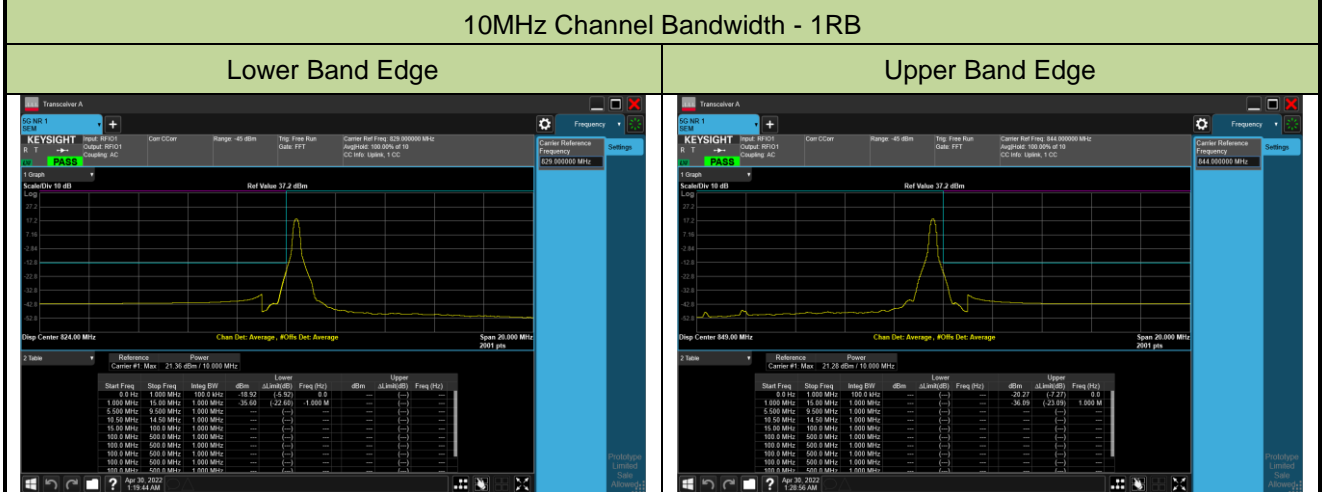
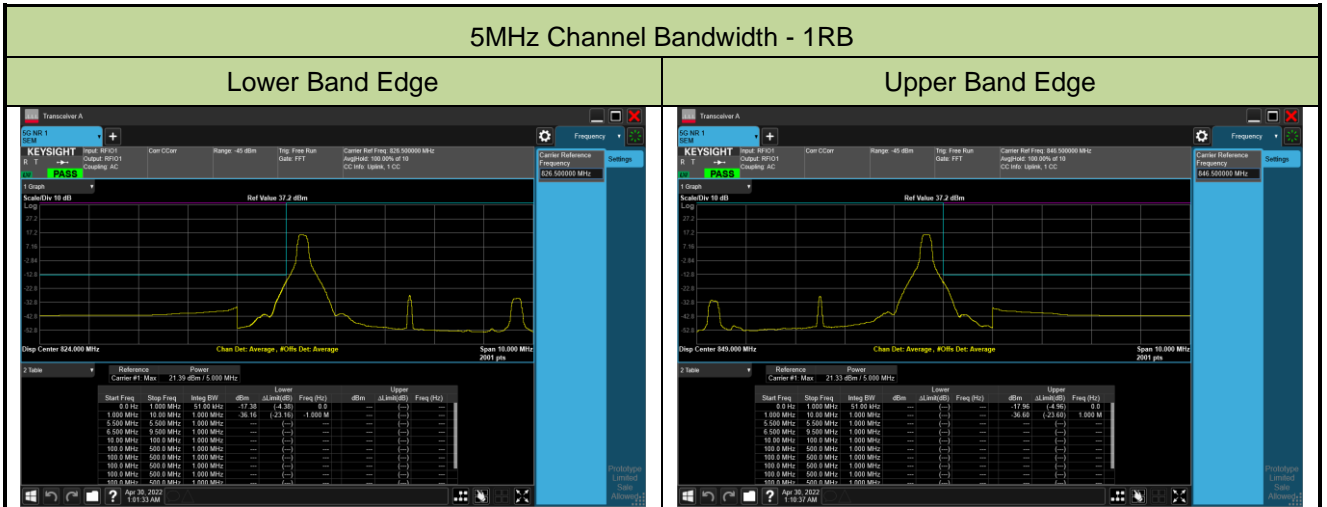


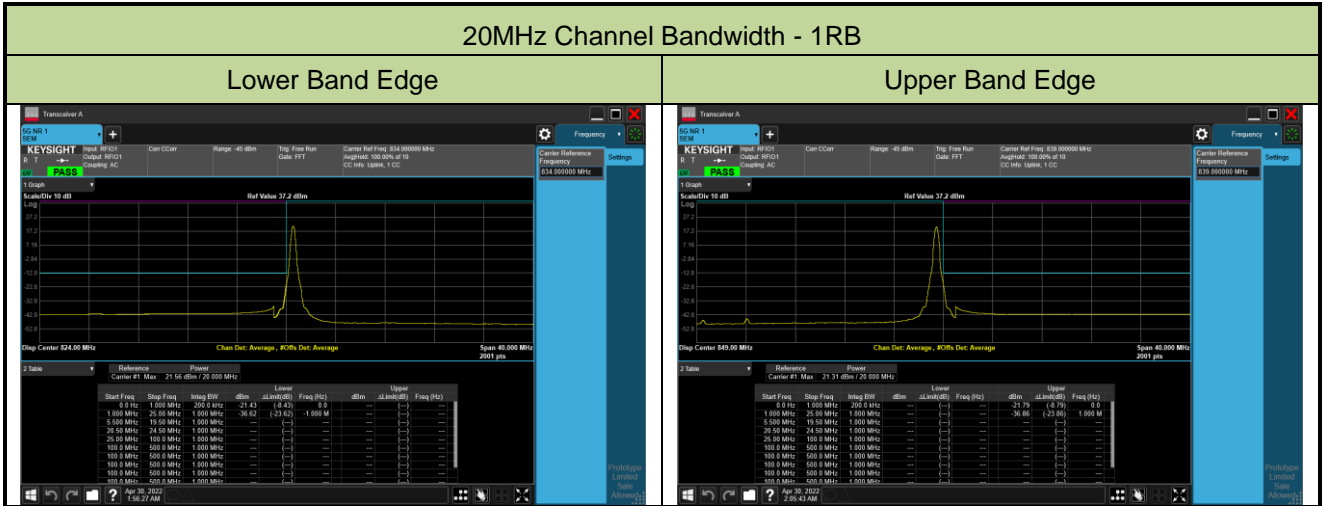
Upper Band Edge





Test Site	SIP-SR1	Test Engineer	Candy Luo
Test Date	2022/04/30	Test Band	N5_SA





5MHz Channel Bandwidth - Full RB

Lower Band Edge



Upper Band Edge



10MHz Channel Bandwidth - Full RB

Lower Band Edge

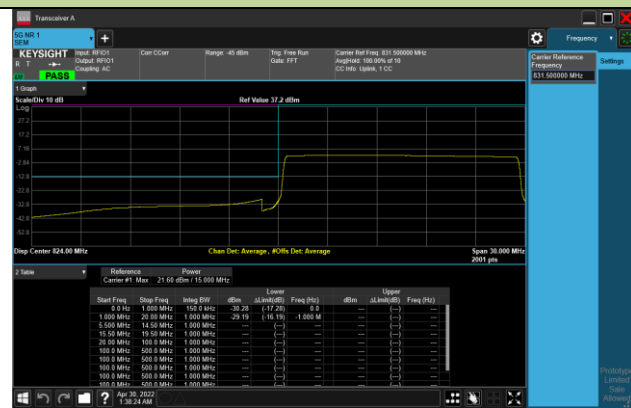


Upper Band Edge

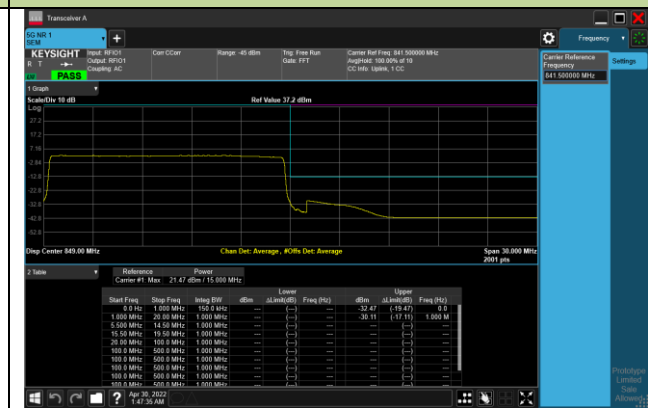


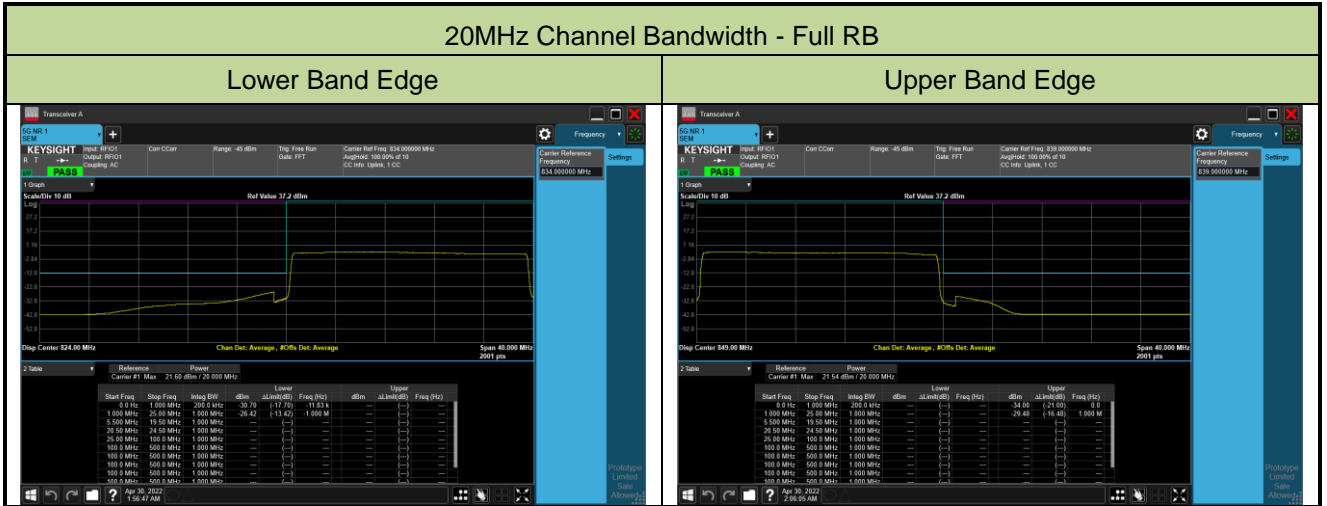
15MHz Channel Bandwidth - Full RB

Lower Band Edge



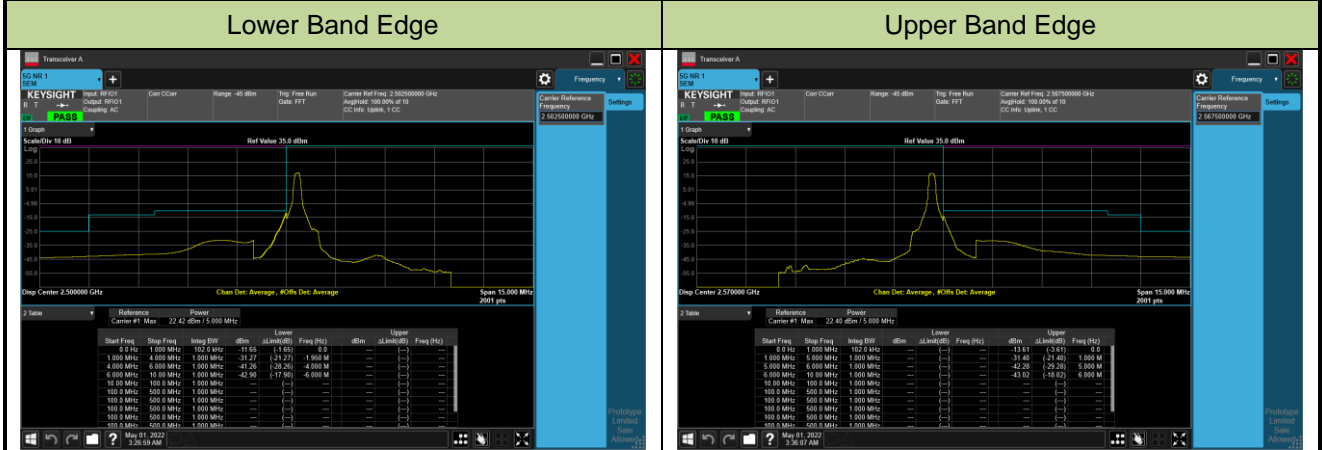
Upper Band Edge



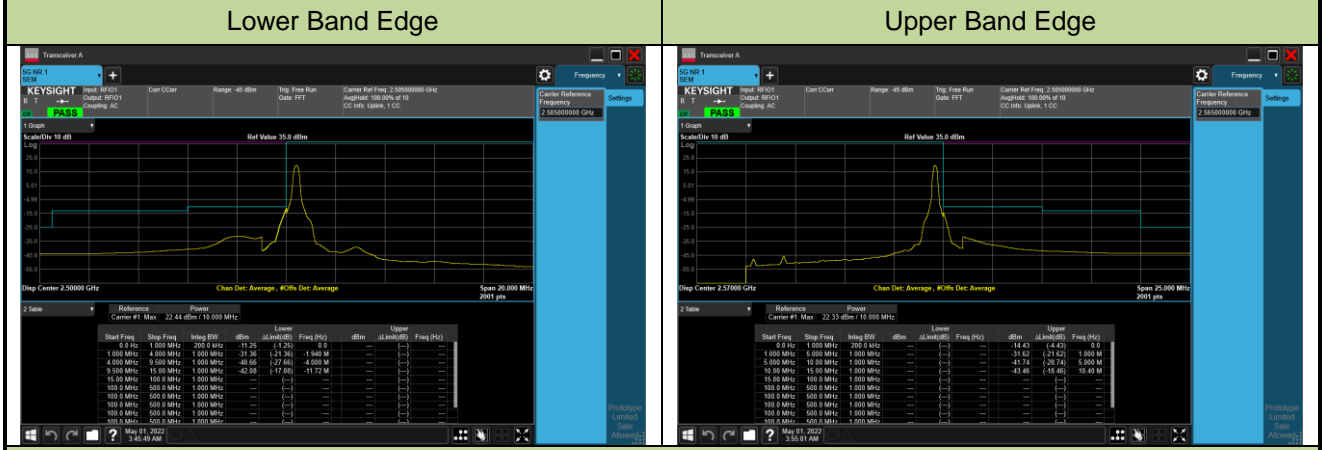


Test Site	SIP-SR1	Test Engineer	Candy Luo
Test Date	2022/05/01	Test Band	n7_SA

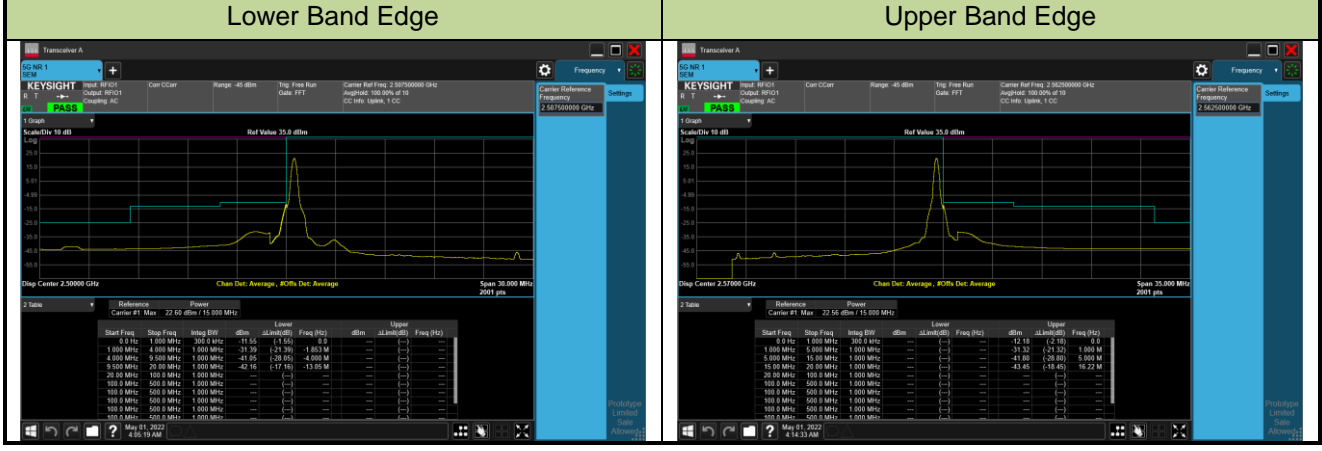
5MHz Channel Bandwidth - 1RB



10MHz Channel Bandwidth - 1RB



15MHz Channel Bandwidth - 1RB



20MHz Channel Bandwidth - 1RB

Lower Band Edge



Upper Band Edge

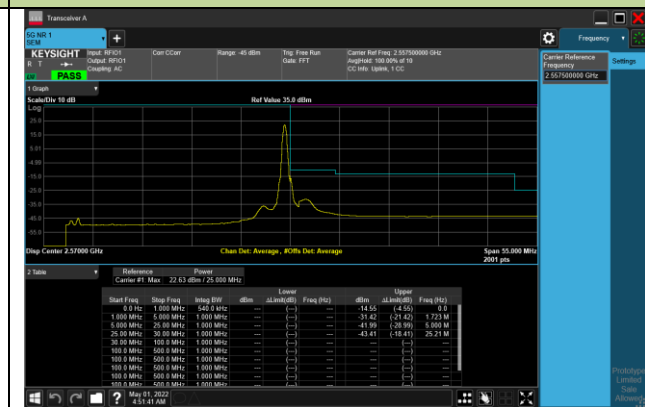


25MHz Channel Bandwidth - 1RB

Lower Band Edge



Upper Band Edge

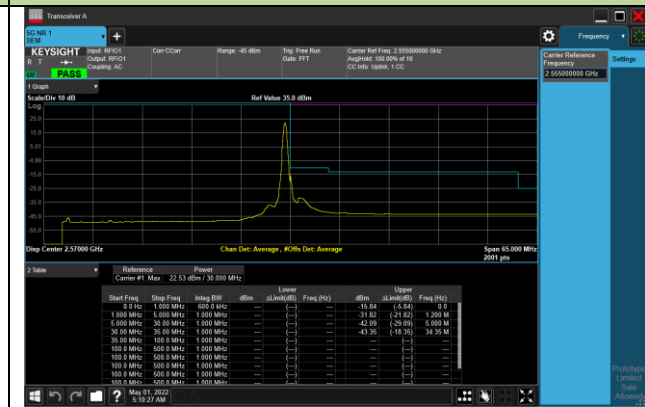


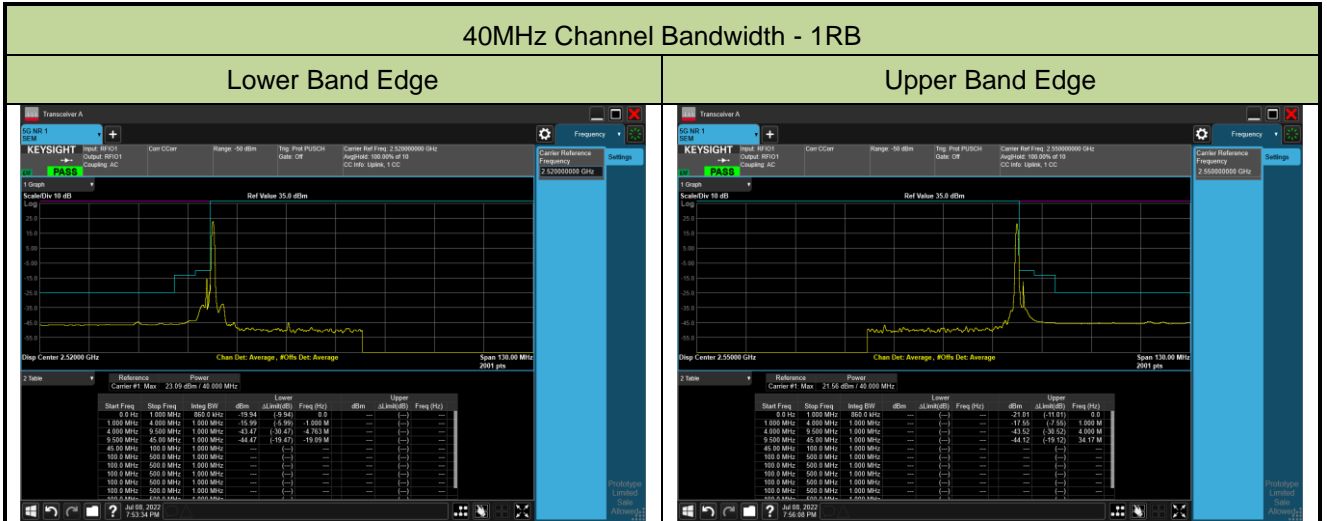
30MHz Channel Bandwidth - 1RB

Lower Band Edge



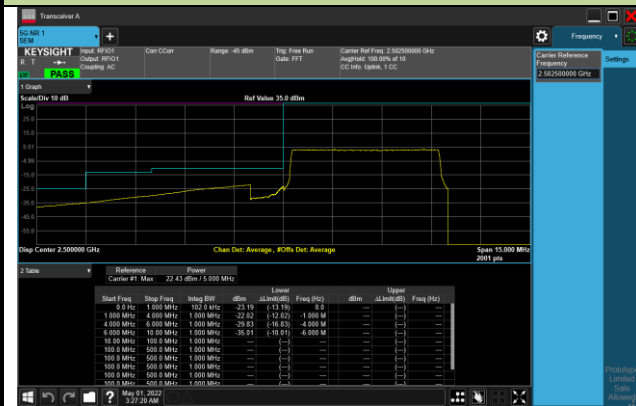
Upper Band Edge



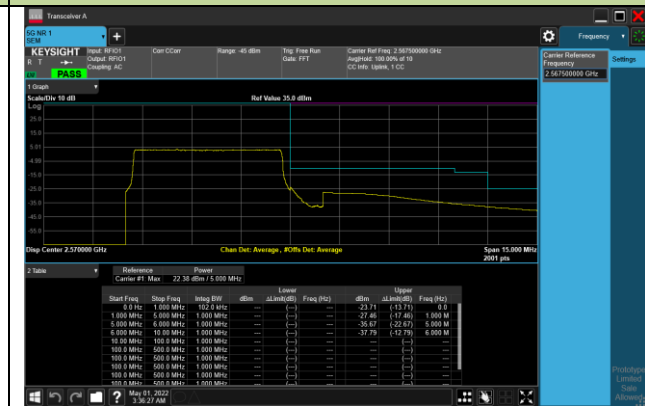


5MHz Channel Bandwidth - Full RB

Lower Band Edge

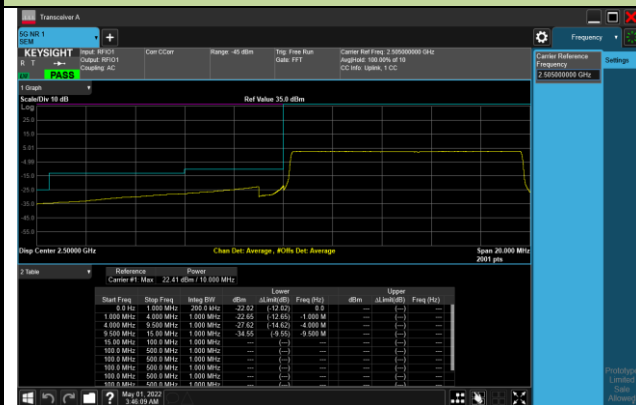


Upper Band Edge

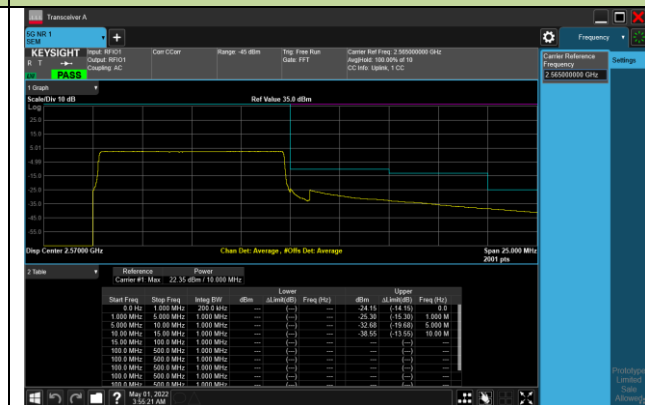


10MHz Channel Bandwidth - Full RB

Lower Band Edge



Upper Band Edge

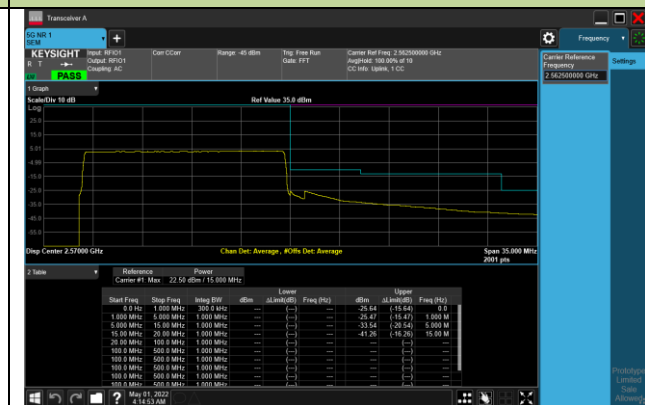


15MHz Channel Bandwidth - Full RB

Lower Band Edge



Upper Band Edge

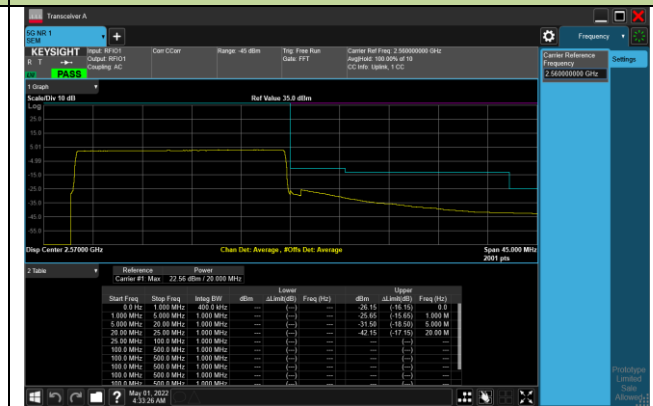


20MHz Channel Bandwidth - Full RB

Lower Band Edge

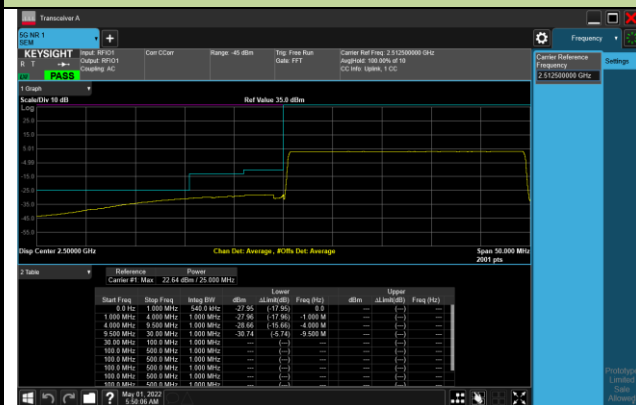


Upper Band Edge



25MHz Channel Bandwidth - Full RB

Lower Band Edge

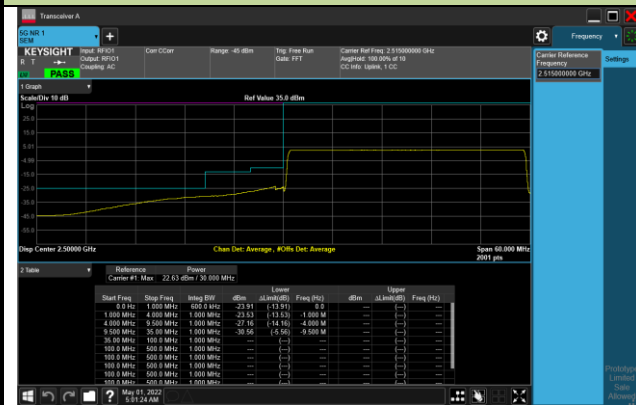


Upper Band Edge

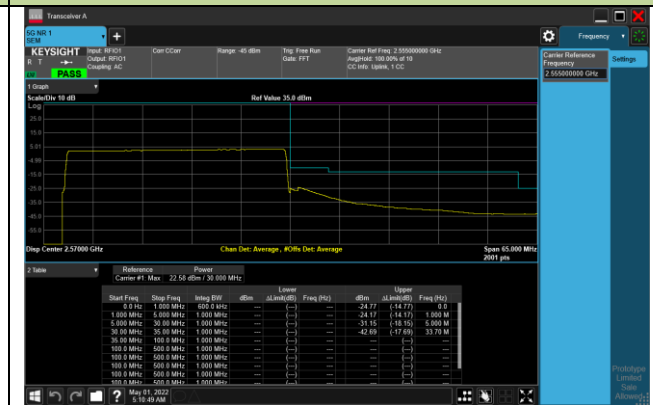


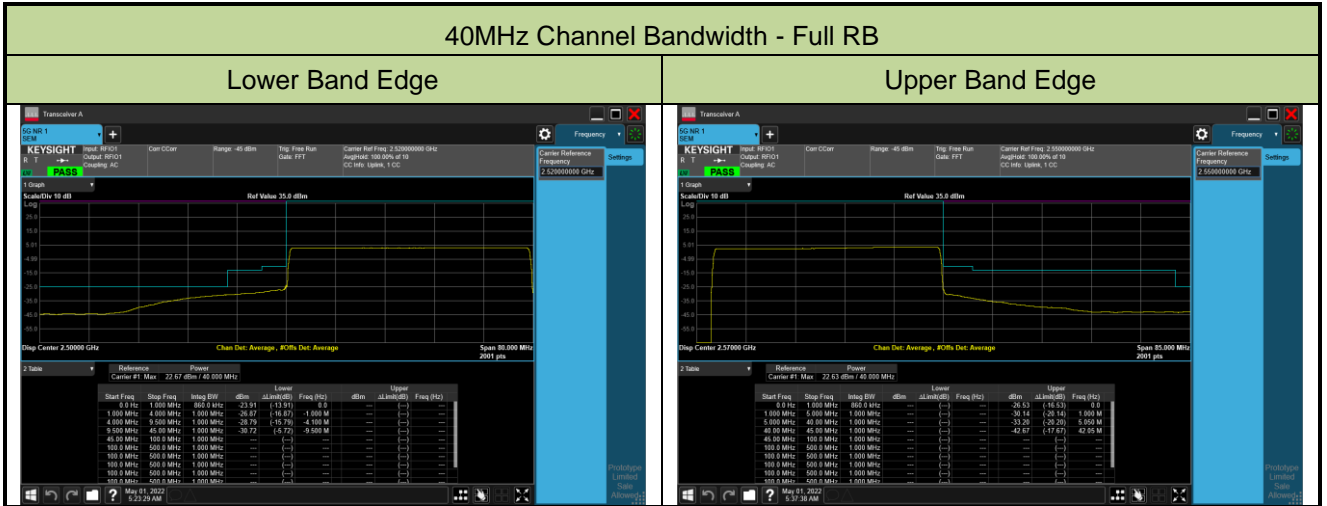
30MHz Channel Bandwidth - Full RB

Lower Band Edge



Upper Band Edge





Test Site	SIP-SR1	Test Engineer	Candy Luo
Test Date	2022/04/30	Test Band	n12_SA

5MHz Channel Bandwidth - 1RB

Lower Band Edge

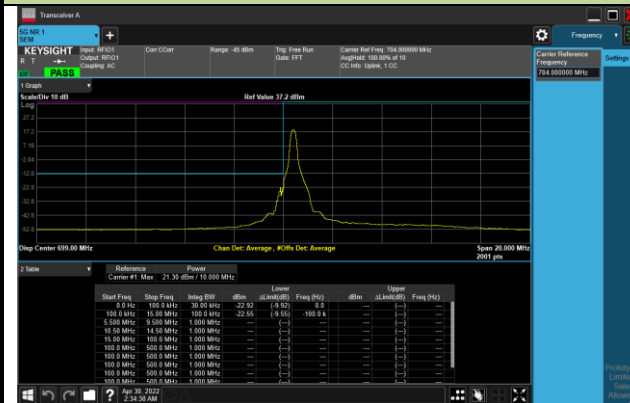


Upper Band Edge



10MHz Channel Bandwidth - 1RB

Lower Band Edge

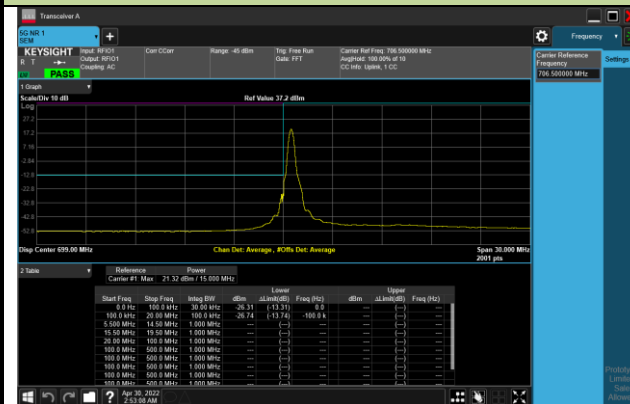


Upper Band Edge

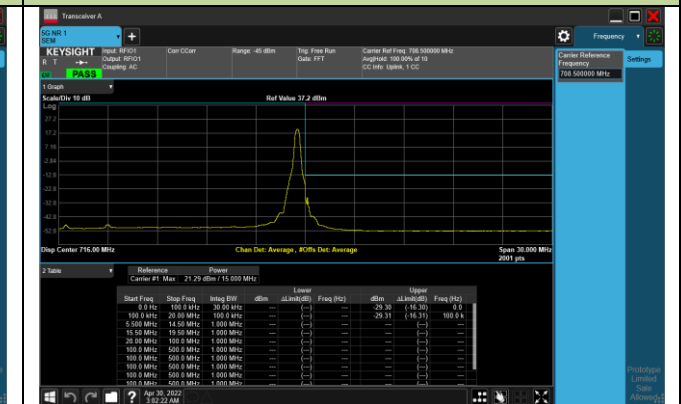


15MHz Channel Bandwidth - 1RB

Lower Band Edge

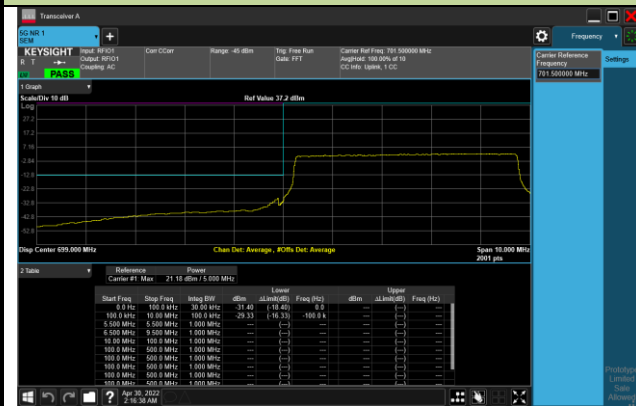


Upper Band Edge



5MHz Channel Bandwidth - Full RB

Lower Band Edge

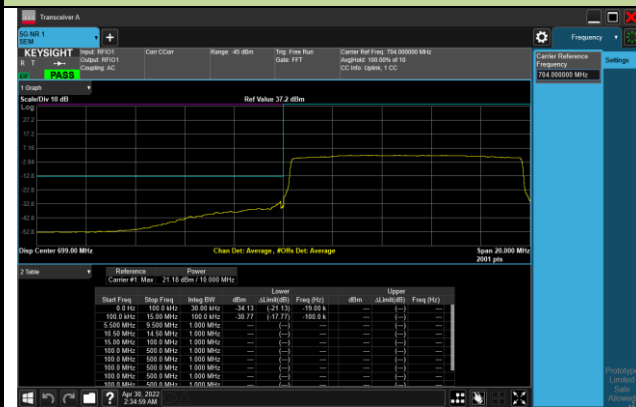


Upper Band Edge



10MHz Channel Bandwidth - Full RB

Lower Band Edge

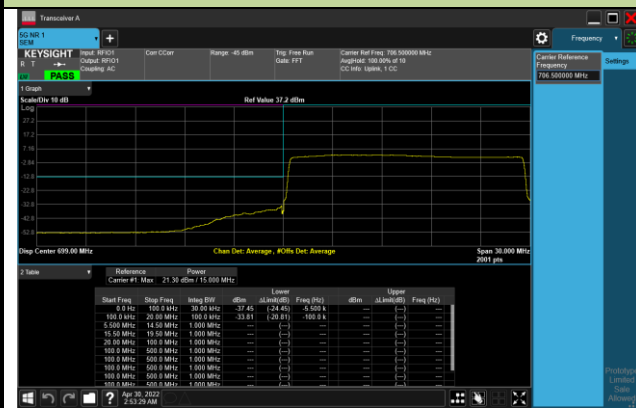


Upper Band Edge



15MHz Channel Bandwidth - Full RB

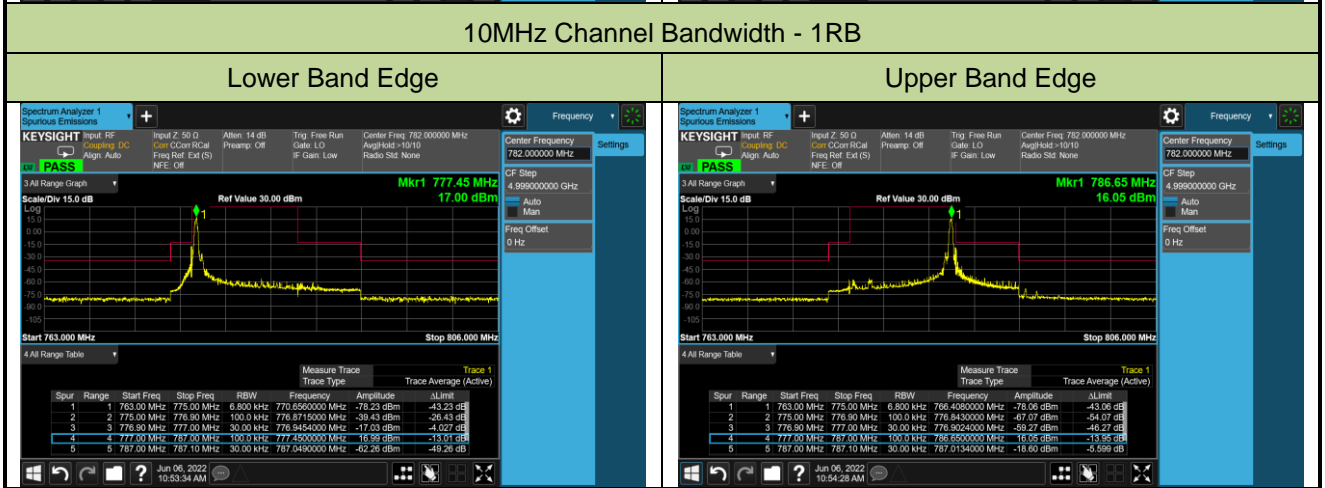
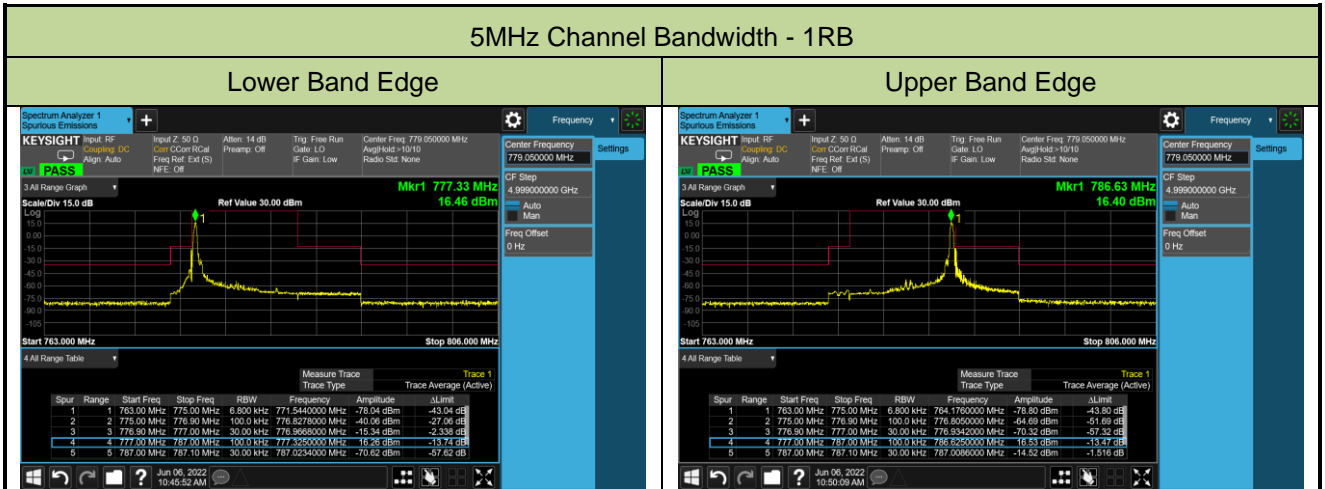
Lower Band Edge



Upper Band Edge

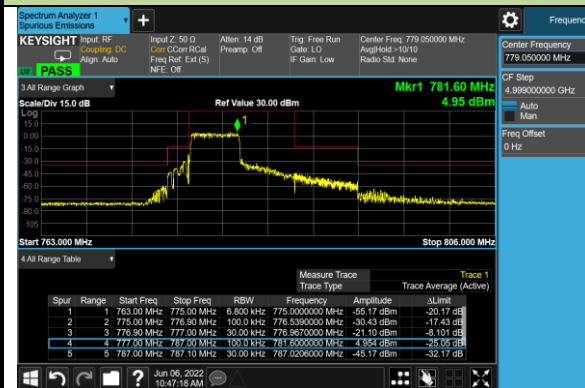


Test Site	SIP-SR1	Test Engineer	Candy Luo
Test Date	2022/06/06	Test Band	n13_SA

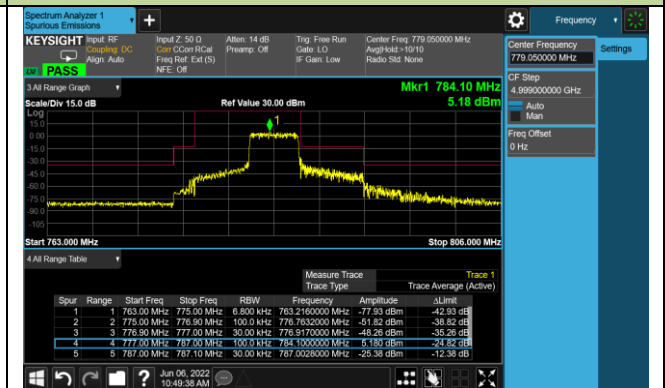


5MHz Channel Bandwidth - Full RB

Lower Band Edge

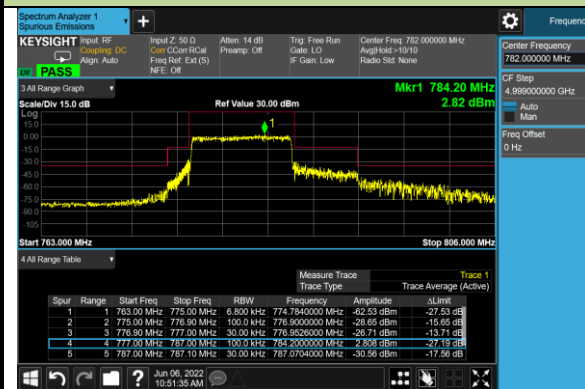


Upper Band Edge



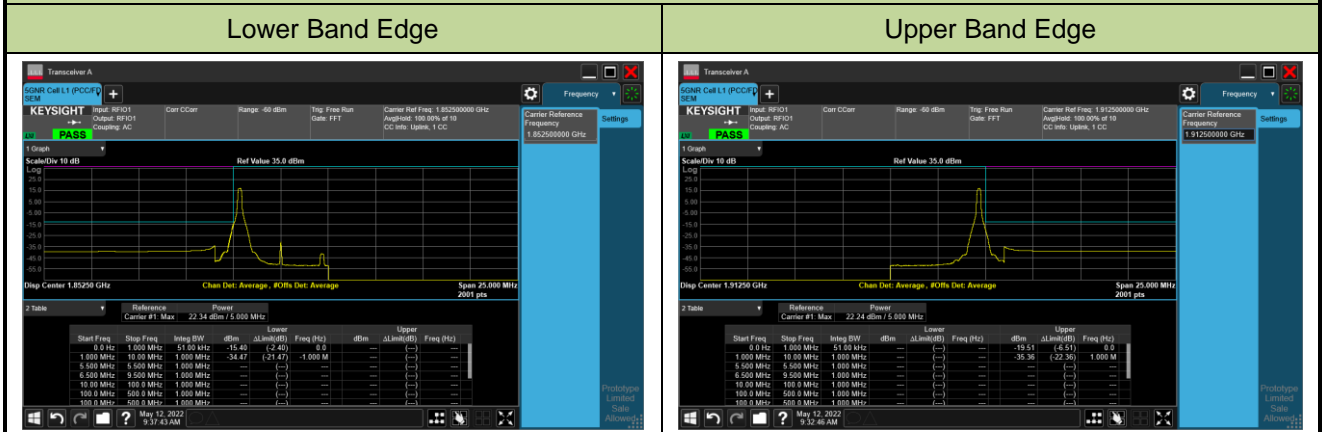
10MHz Channel Bandwidth - Full RB

Lower Band Edge

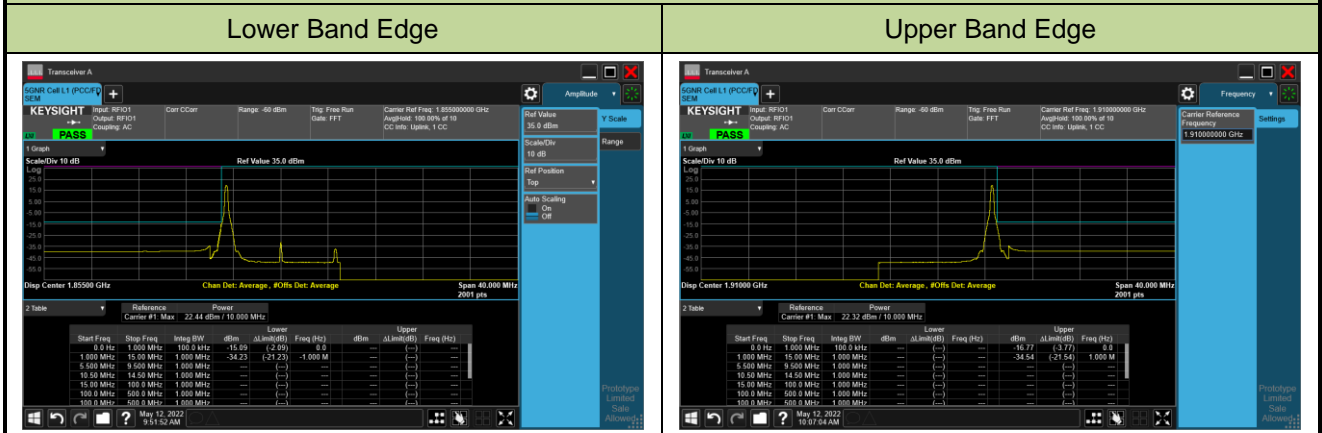


Test Site	SIP-SR1	Test Engineer	Candy Luo
Test Date	2022/05/12	Test Band	n25_SA

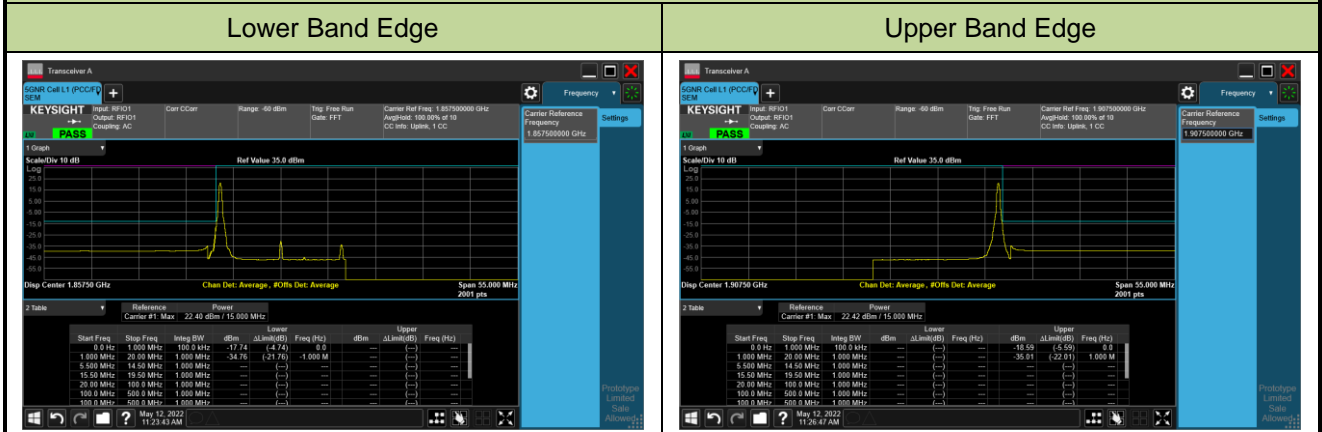
5MHz Channel Bandwidth - 1RB



10MHz Channel Bandwidth - 1RB

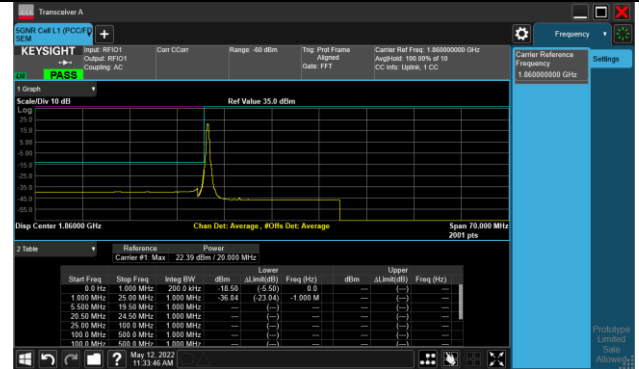


15MHz Channel Bandwidth - 1RB

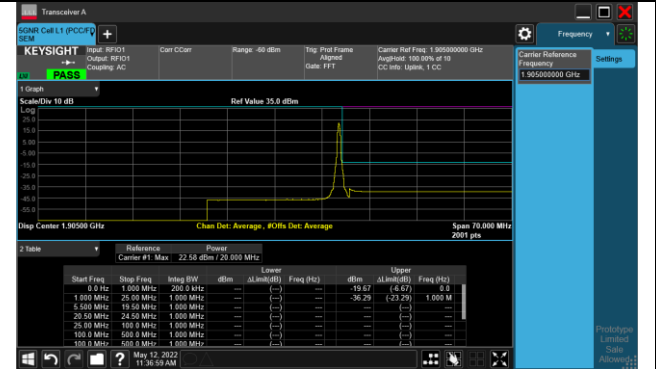


20MHz Channel Bandwidth - 1RB

Lower Band Edge

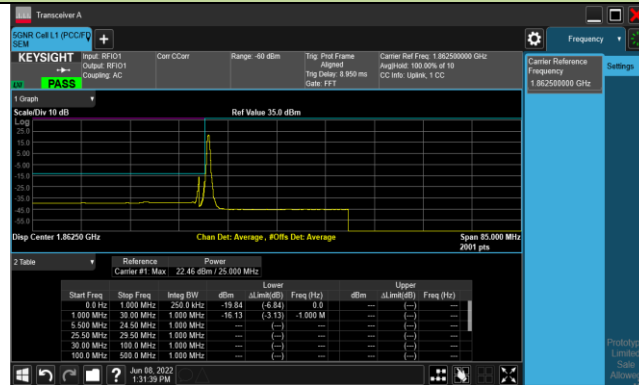


Upper Band Edge

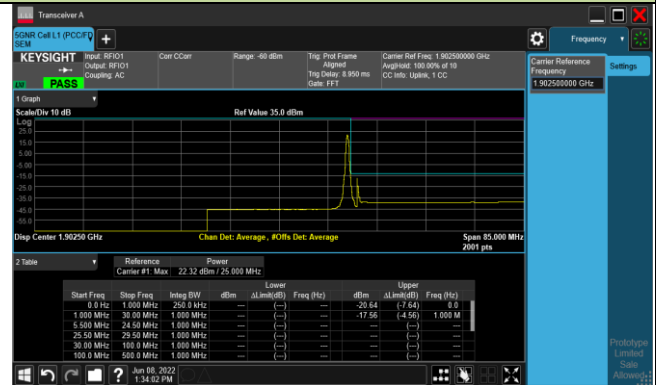


25MHz Channel Bandwidth - 1RB

Lower Band Edge

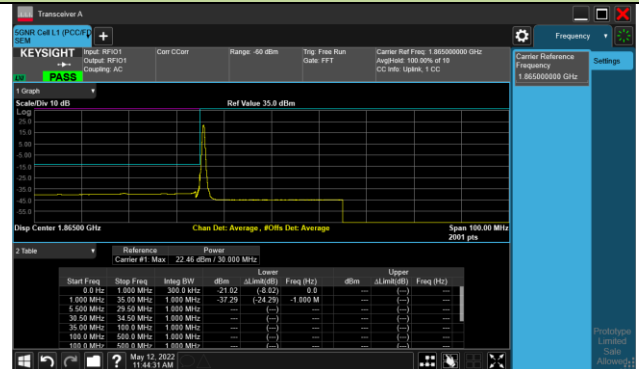


Upper Band Edge



30MHz Channel Bandwidth - 1RB

Lower Band Edge



Upper Band Edge

