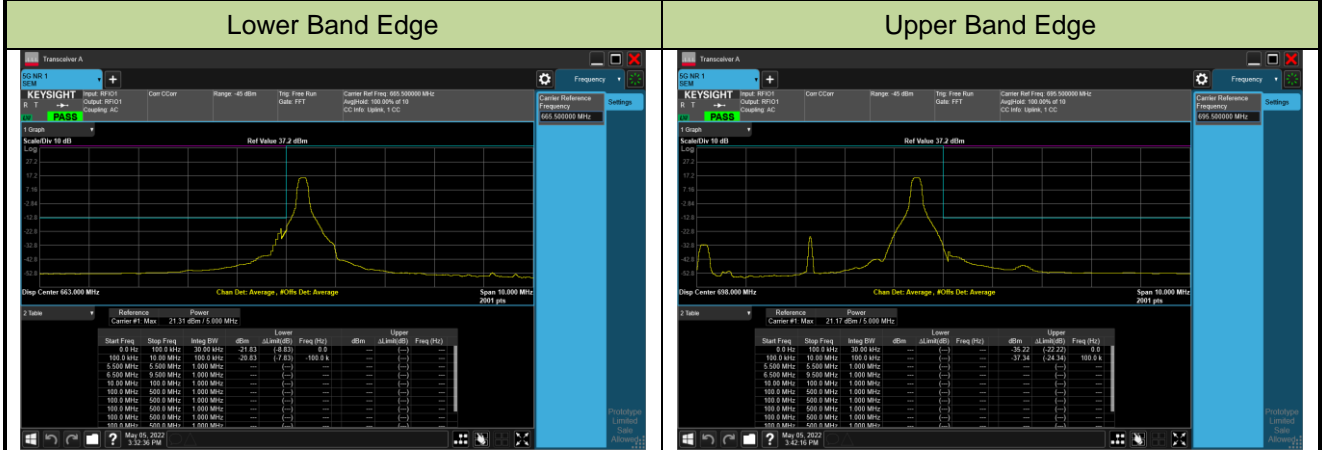
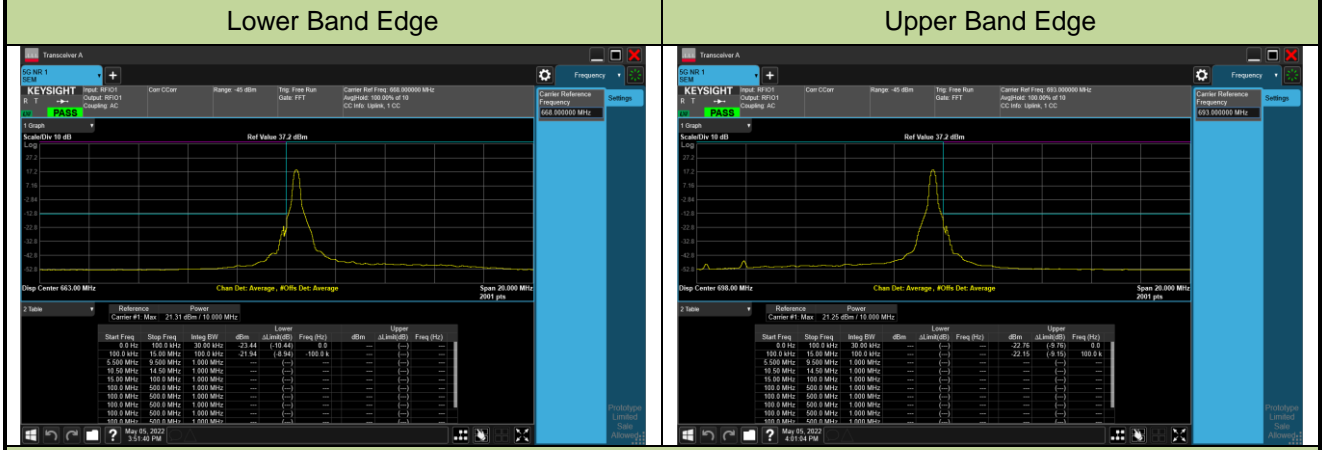


Test Site	SIP-SR1	Test Engineer	Candy Luo
Test Date	2022/05/05	Test Band	n71_SA

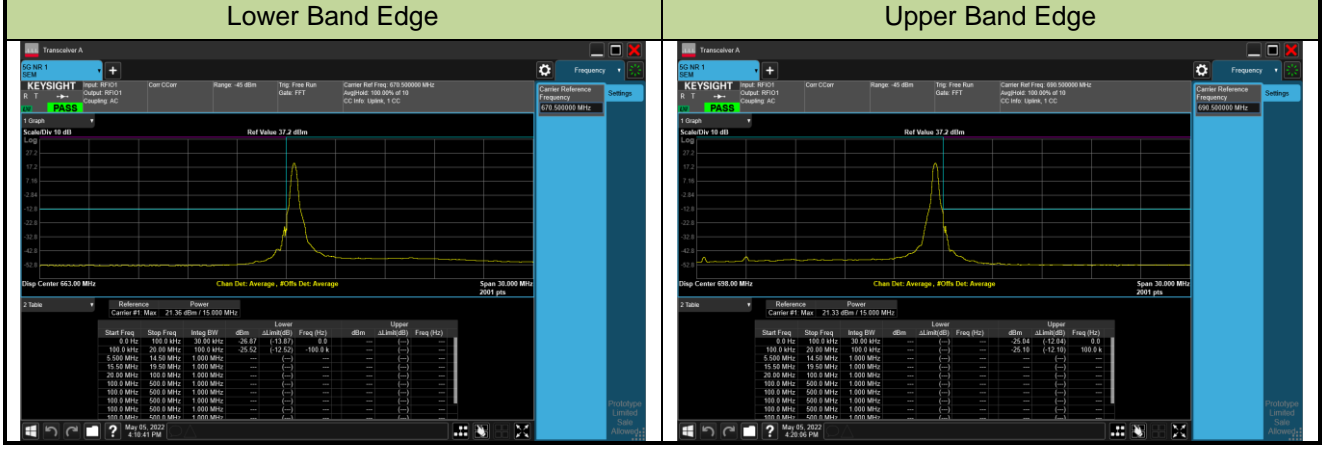
5MHz Channel Bandwidth - 1RB

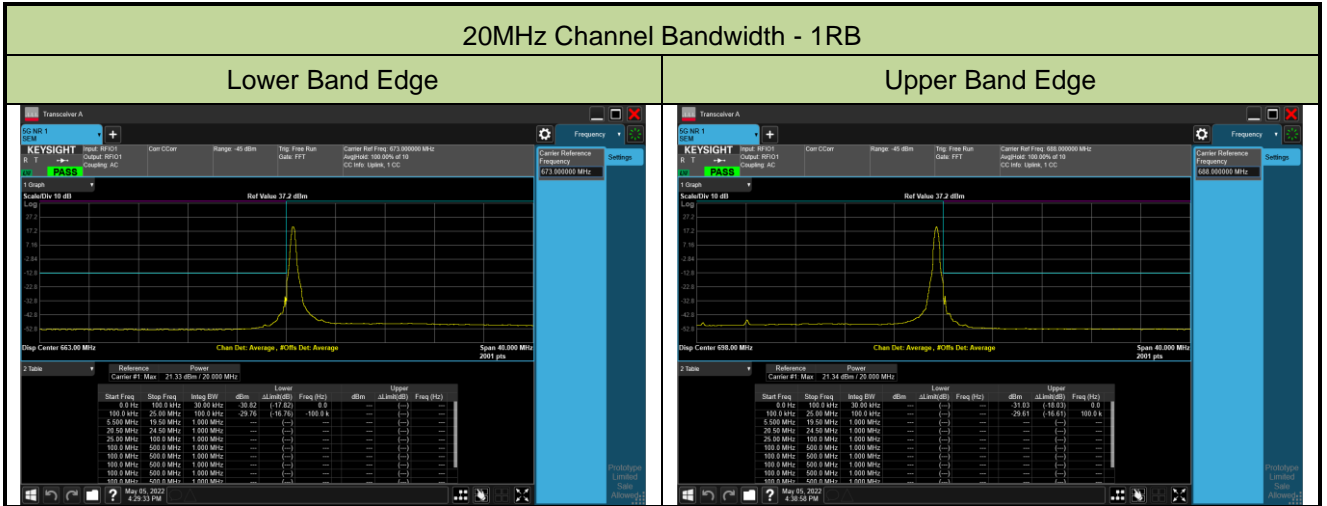


10MHz Channel Bandwidth - 1RB



15MHz Channel Bandwidth - 1RB



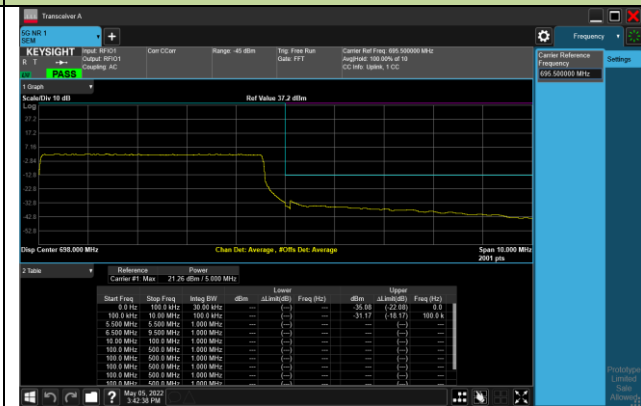


5MHz Channel Bandwidth - Full RB

Lower Band Edge



Upper Band Edge

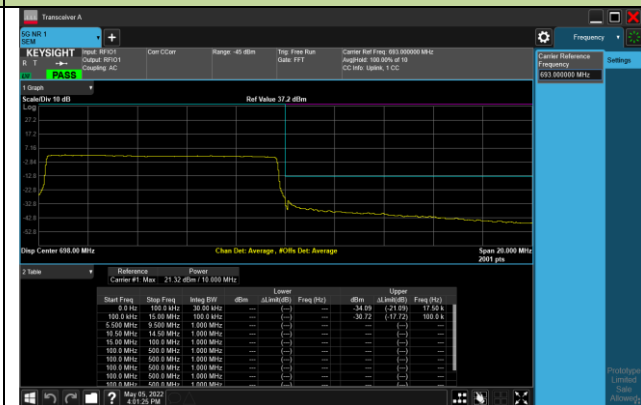


10MHz Channel Bandwidth - Full RB

Lower Band Edge

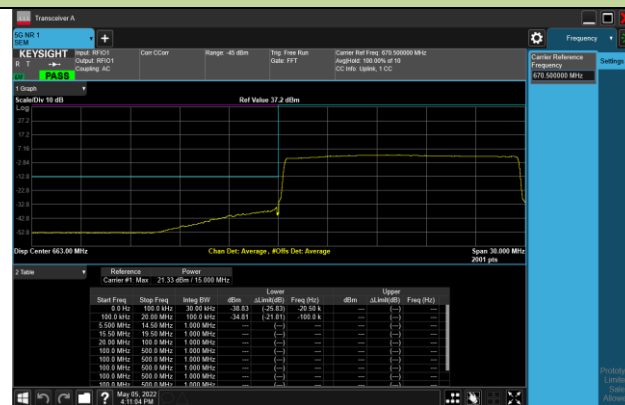


Upper Band Edge



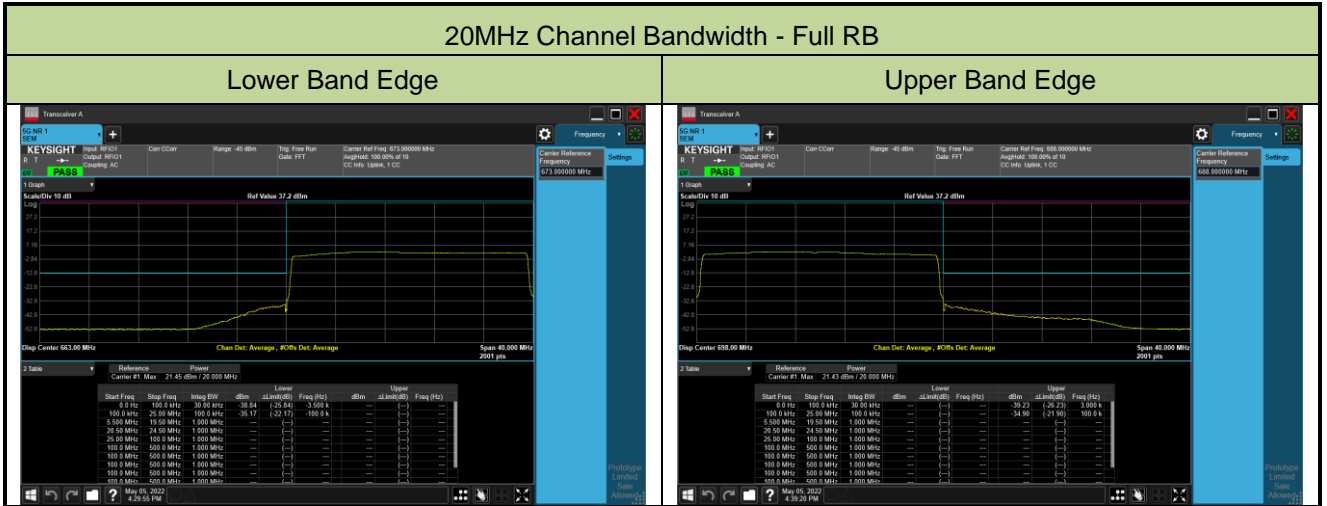
15MHz Channel Bandwidth - Full RB

Lower Band Edge



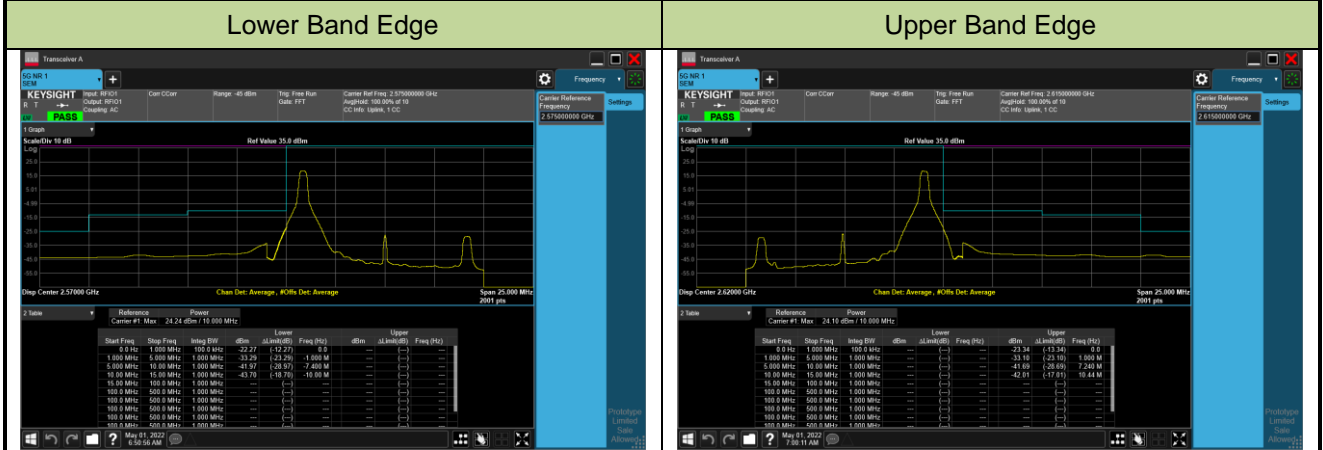
Upper Band Edge



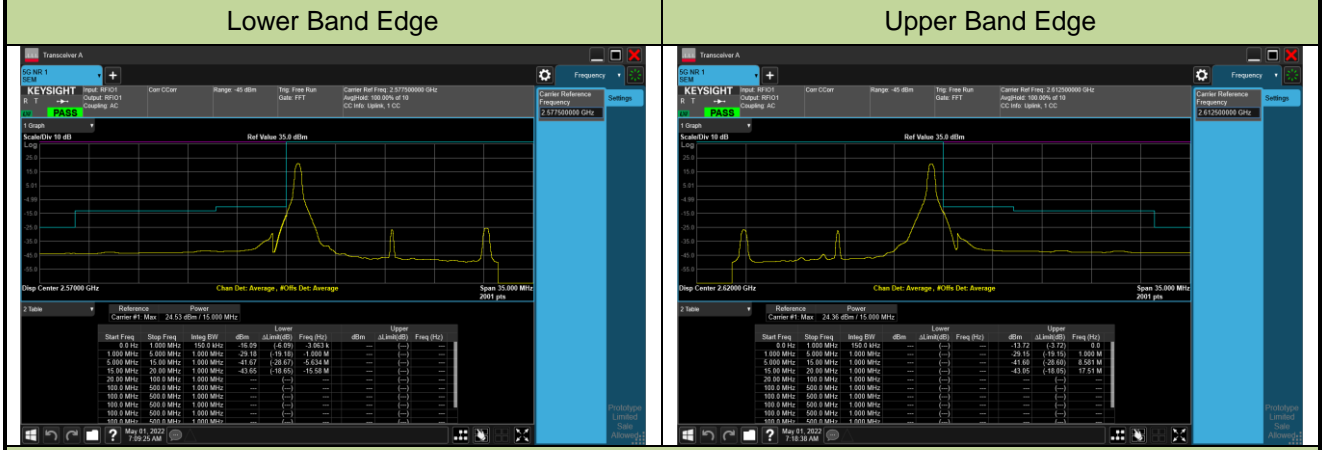


Test Site	SIP-SR1	Test Engineer	Candy Luo
Test Date	2022/05/01	Test Band	n38_SA_HPUE

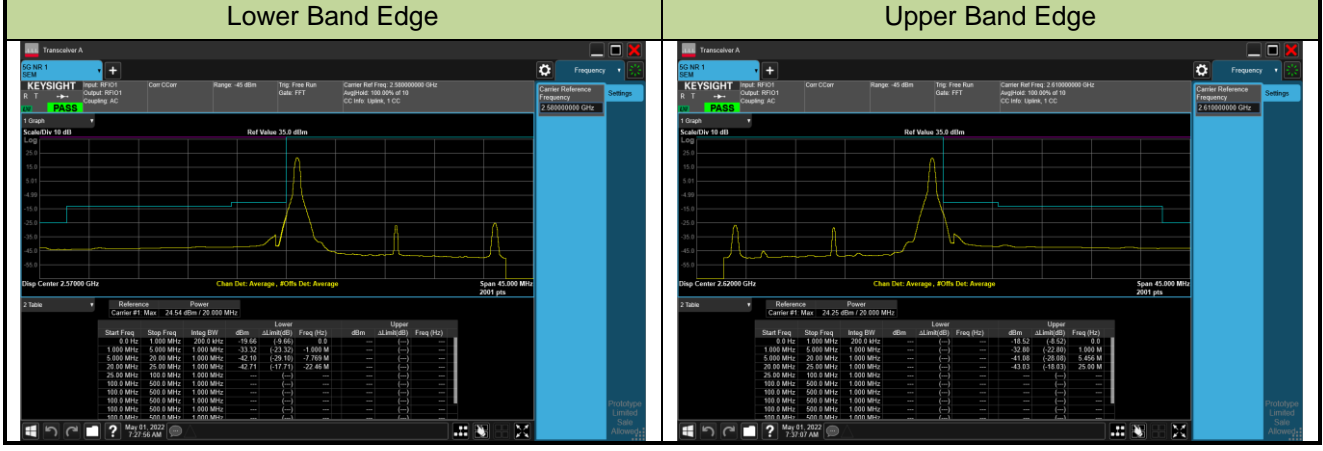
10MHz Channel Bandwidth - 1RB



15MHz Channel Bandwidth - 1RB



20MHz Channel Bandwidth - 1RB



30MHz Channel Bandwidth - 1RB

Lower Band Edge

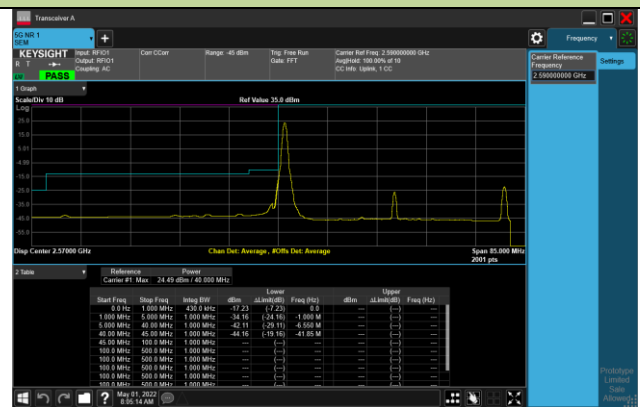


Upper Band Edge



40MHz Channel Bandwidth - 1RB

Lower Band Edge

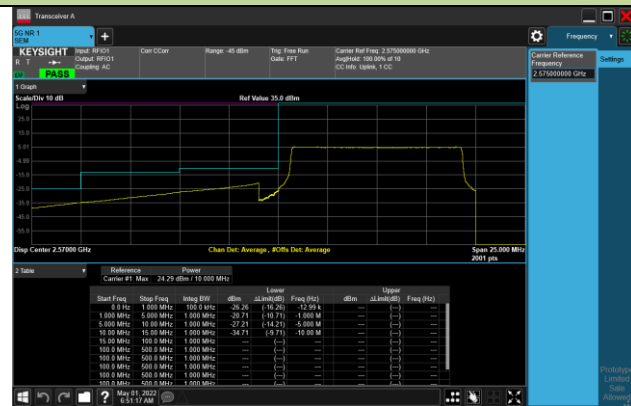


Upper Band Edge



10MHz Channel Bandwidth - Full RB

Lower Band Edge

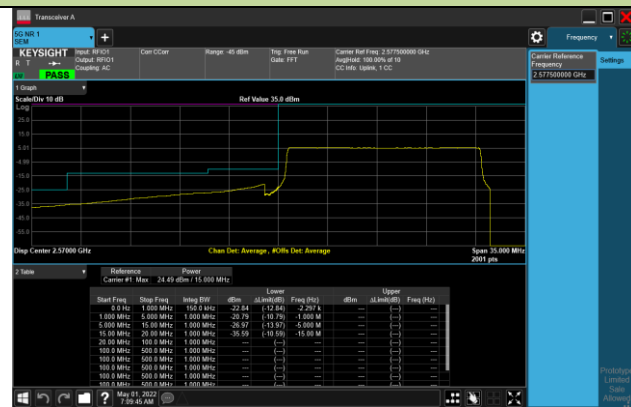


Upper Band Edge

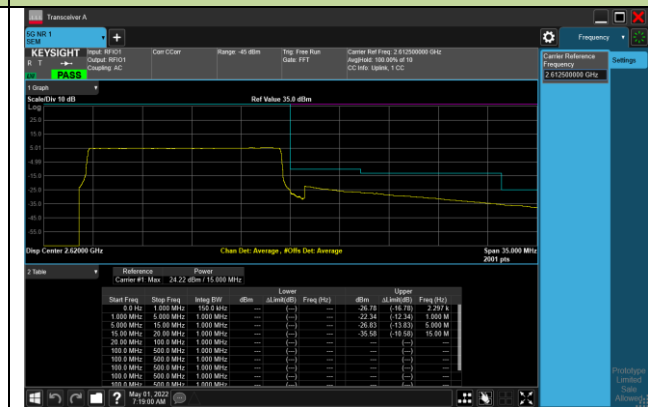


15MHz Channel Bandwidth - Full RB

Lower Band Edge

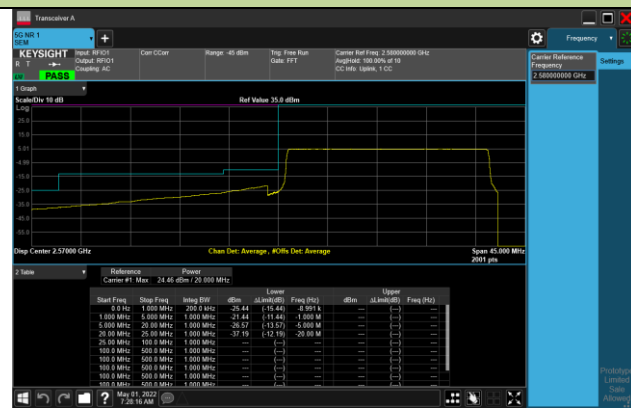


Upper Band Edge



20MHz Channel Bandwidth - Full RB

Lower Band Edge

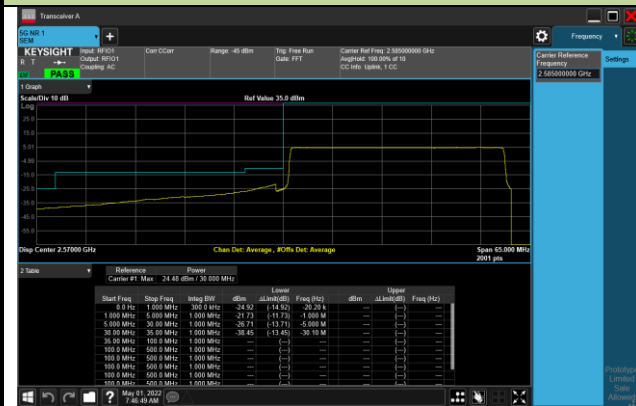


Upper Band Edge



30MHz Channel Bandwidth - Full RB

Lower Band Edge



Upper Band Edge

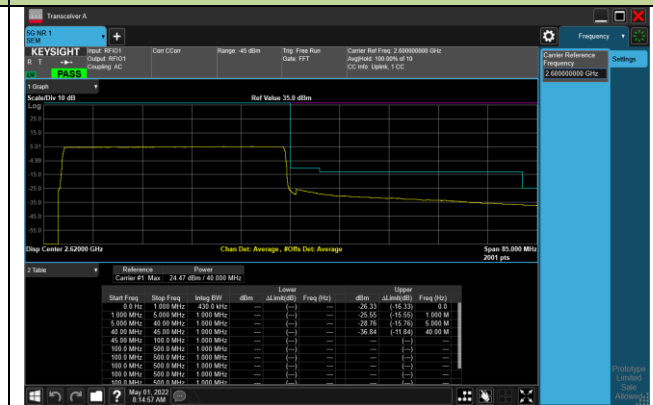


40MHz Channel Bandwidth - Full RB

Lower Band Edge

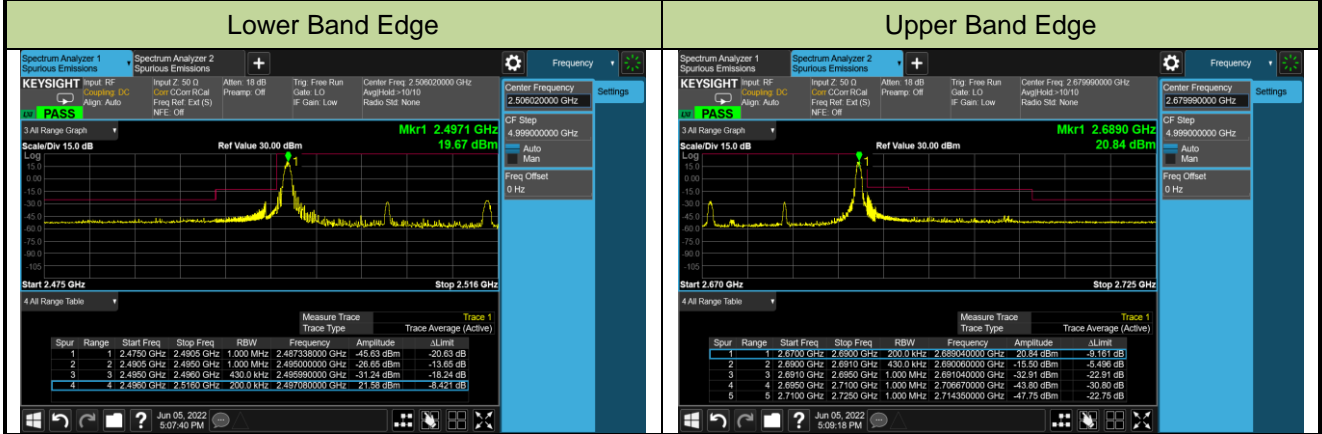


Upper Band Edge

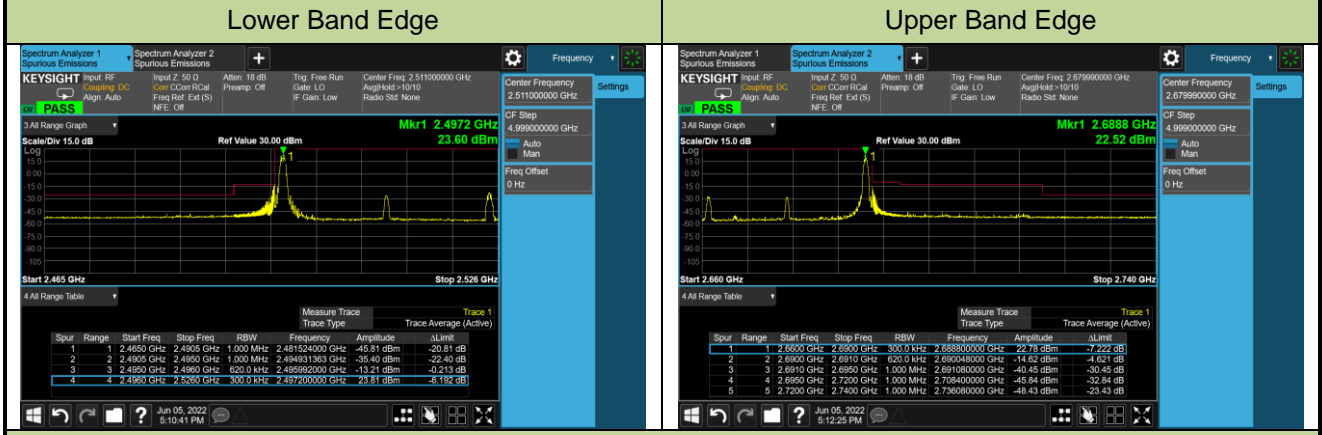


Test Site	SIP-SR1	Test Engineer	Candy Luo
Test Date	2022/06/05	Test Band	n41_SA_HPUE

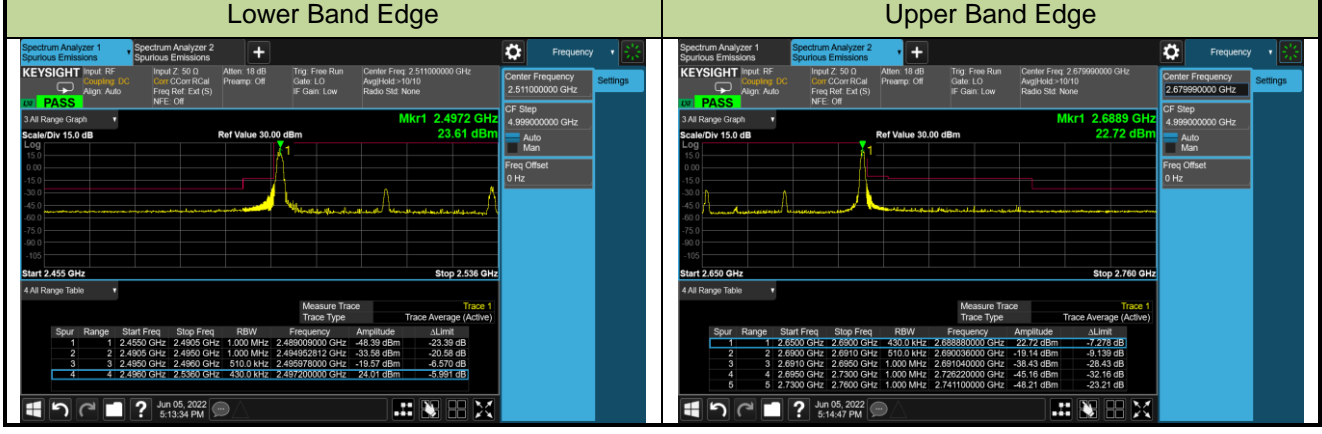
20MHz Channel Bandwidth - 1RB



30MHz Channel Bandwidth - 1RB

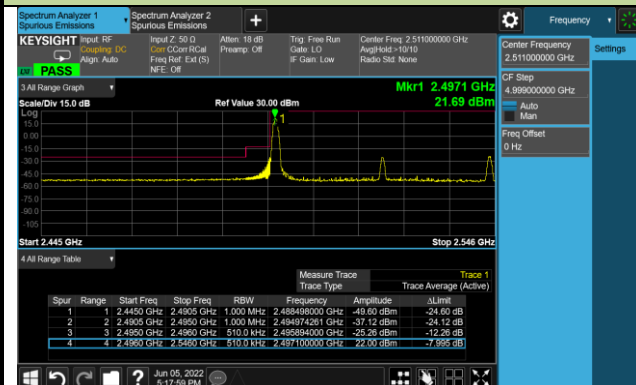


40MHz Channel Bandwidth - 1RB

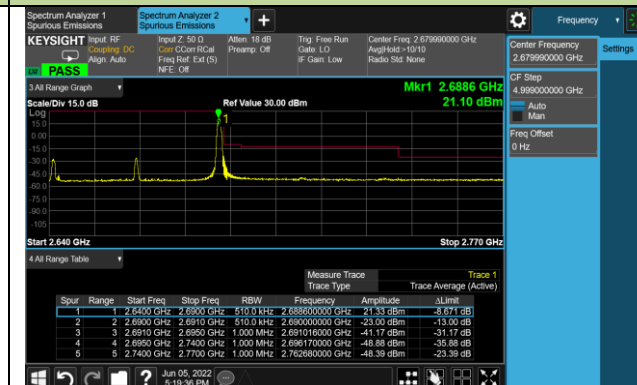


50MHz Channel Bandwidth - 1RB

Lower Band Edge

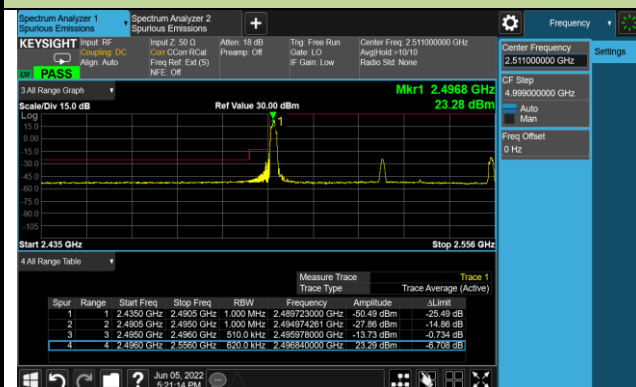


Upper Band Edge

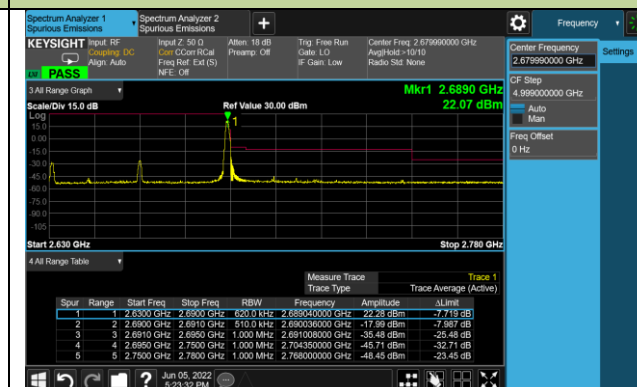


60MHz Channel Bandwidth - 1RB

Lower Band Edge

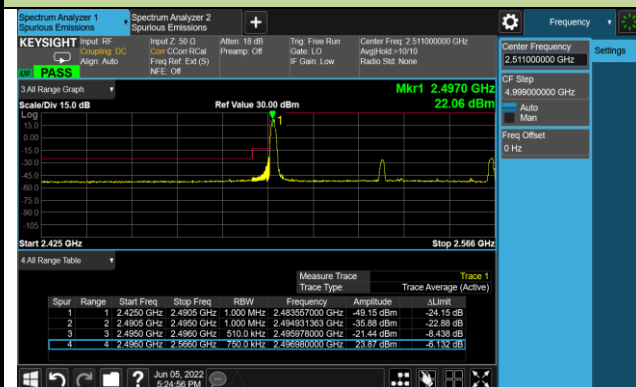


Upper Band Edge

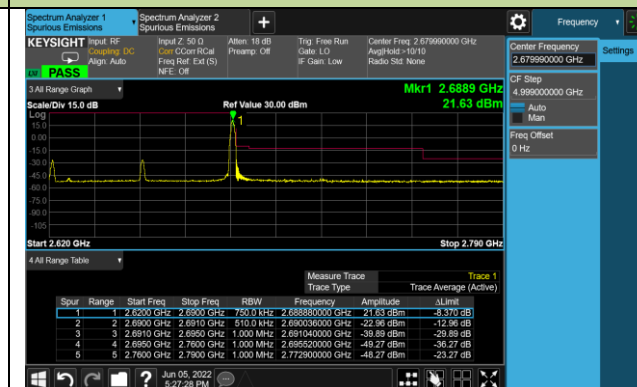


70MHz Channel Bandwidth - 1RB

Lower Band Edge

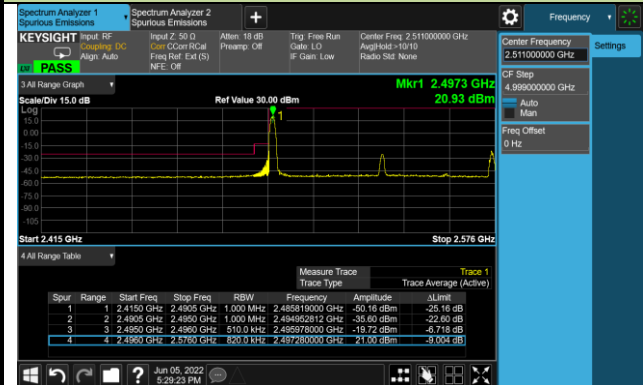


Upper Band Edge

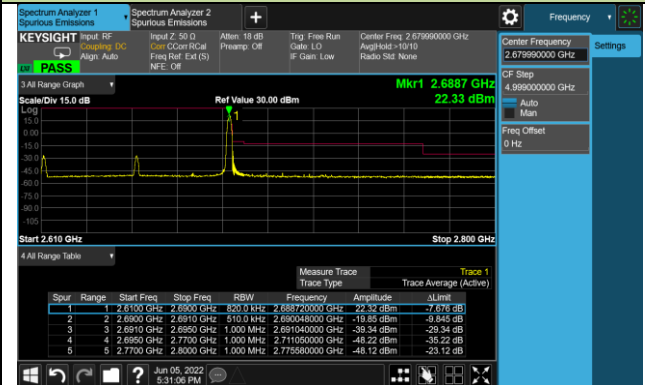


80MHz Channel Bandwidth - 1RB

Lower Band Edge

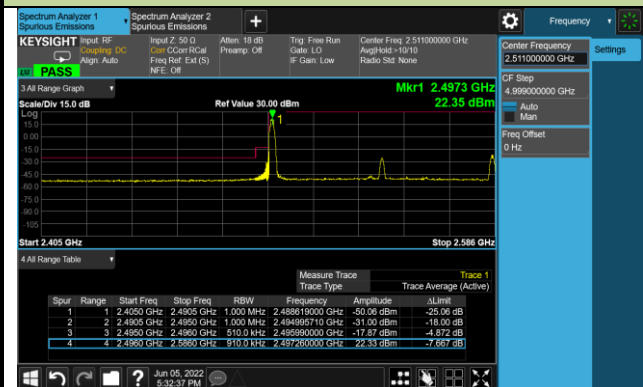


Upper Band Edge

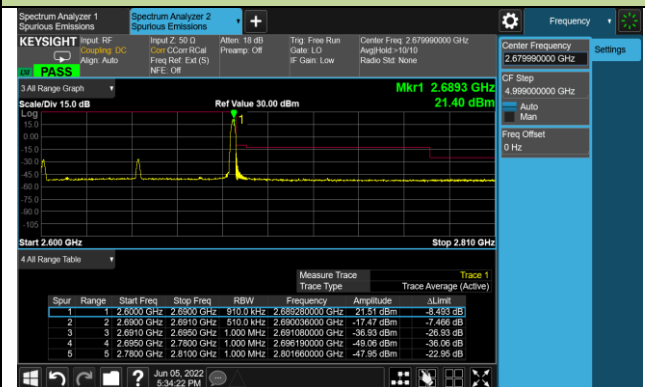


90MHz Channel Bandwidth - 1RB

Lower Band Edge

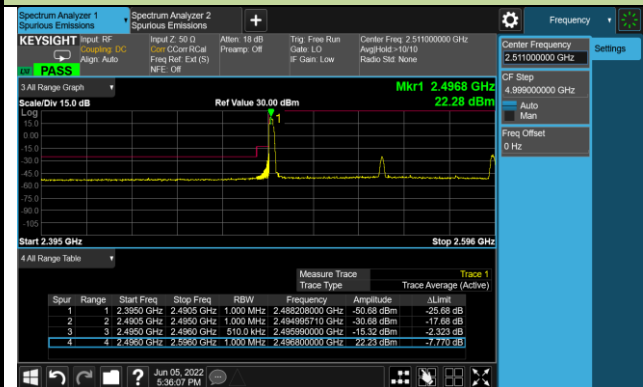


Upper Band Edge

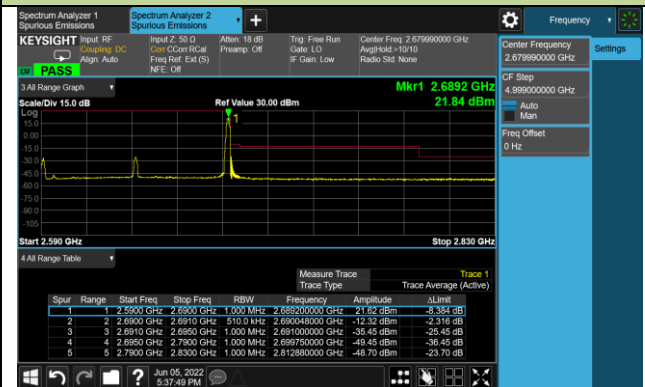


100MHz Channel Bandwidth - 1RB

Lower Band Edge

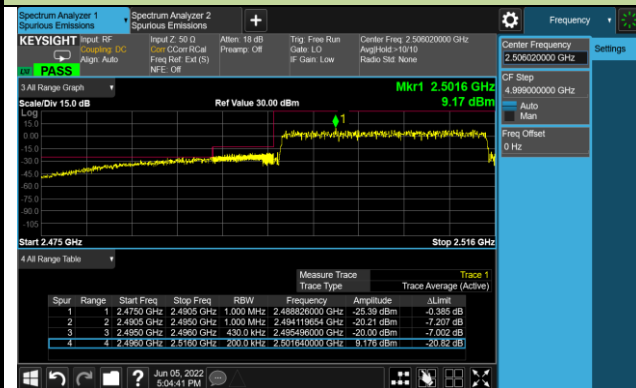


Upper Band Edge

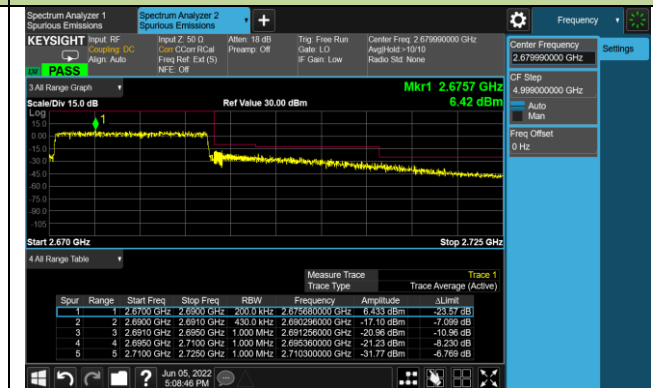


20MHz Channel Bandwidth - Full RB

Lower Band Edge

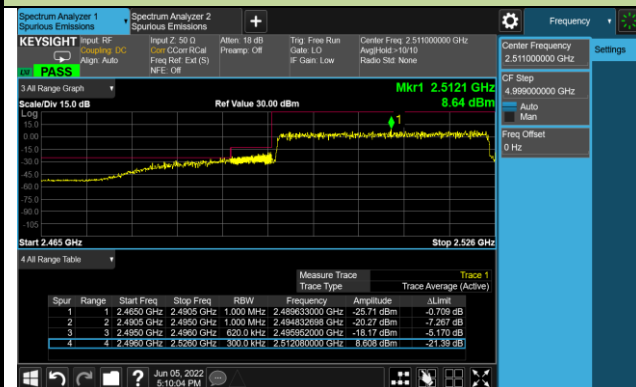


Upper Band Edge

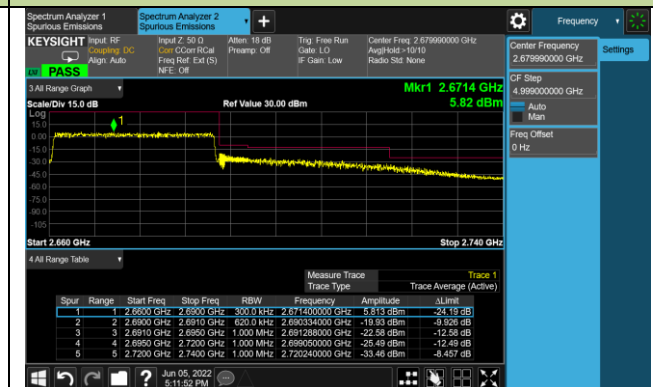


30MHz Channel Bandwidth - Full RB

Lower Band Edge

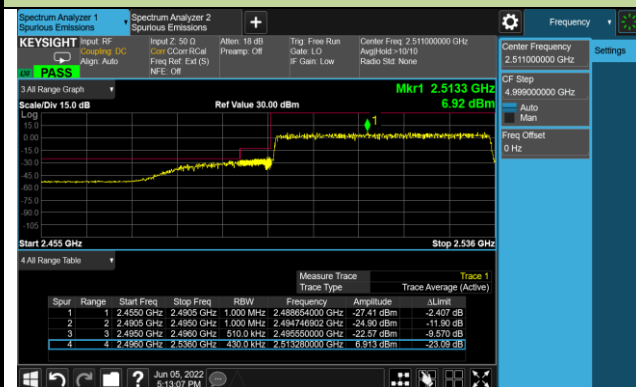


Upper Band Edge

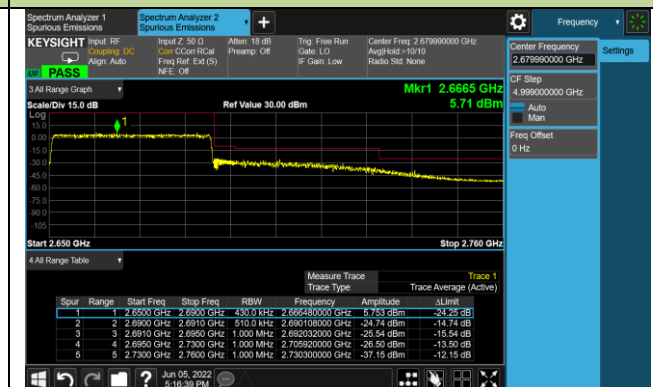


40MHz Channel Bandwidth - Full RB

Lower Band Edge

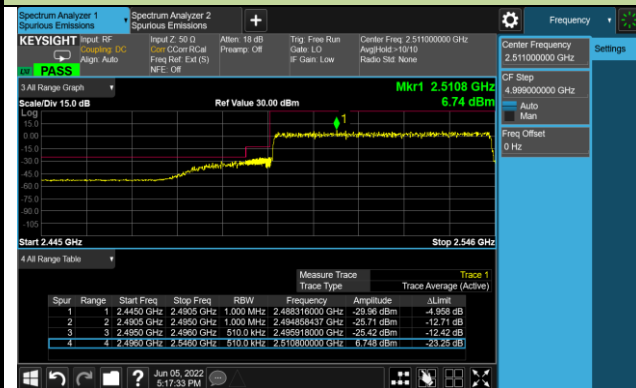


Upper Band Edge

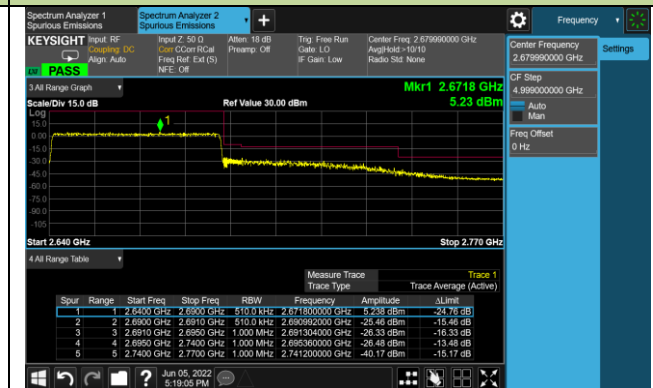


50MHz Channel Bandwidth - Full RB

Lower Band Edge

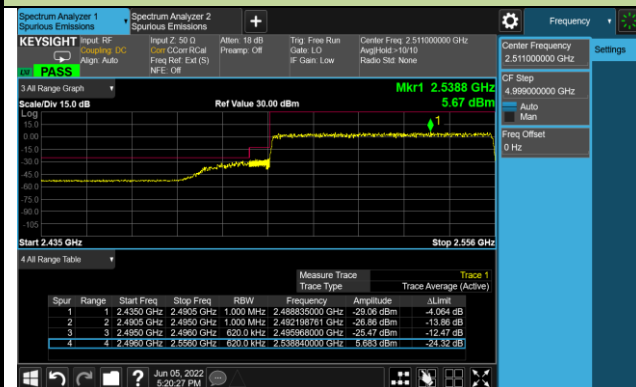


Upper Band Edge

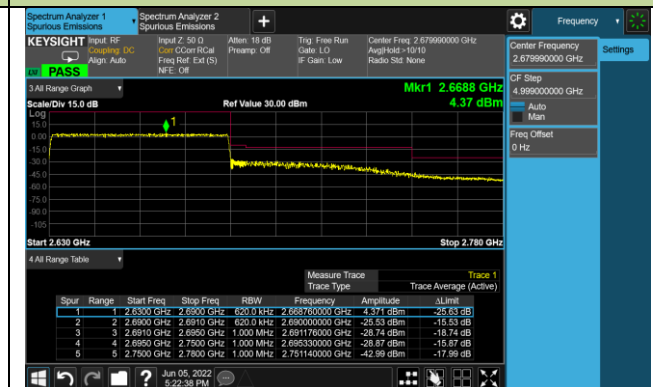


60MHz Channel Bandwidth - Full RB

Lower Band Edge

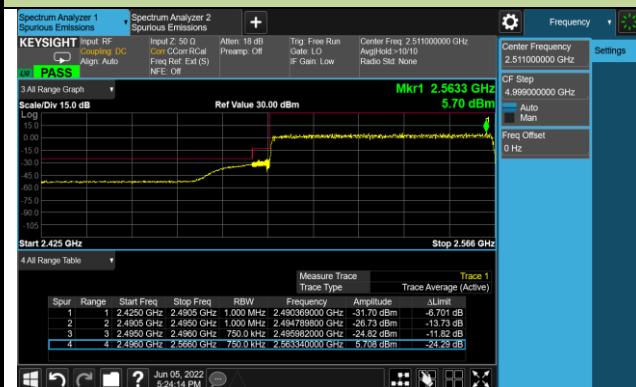


Upper Band Edge

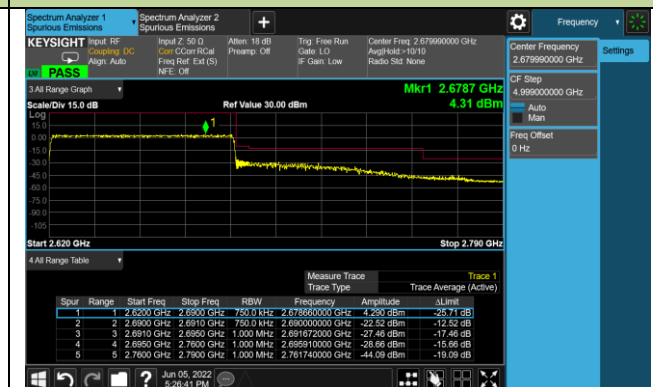


70MHz Channel Bandwidth - Full RB

Lower Band Edge

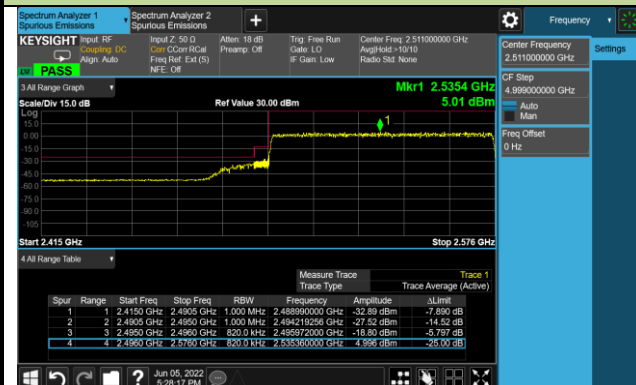


Upper Band Edge

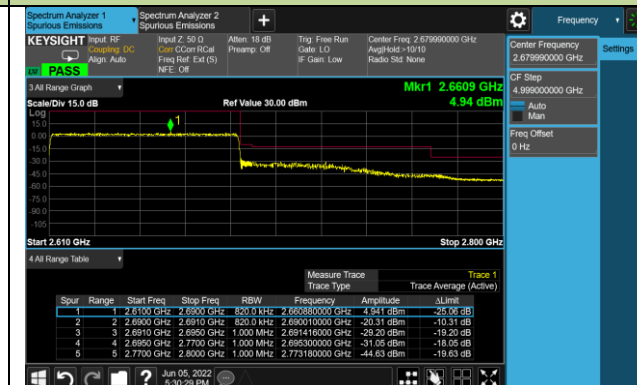


80MHz Channel Bandwidth - Full RB

Lower Band Edge

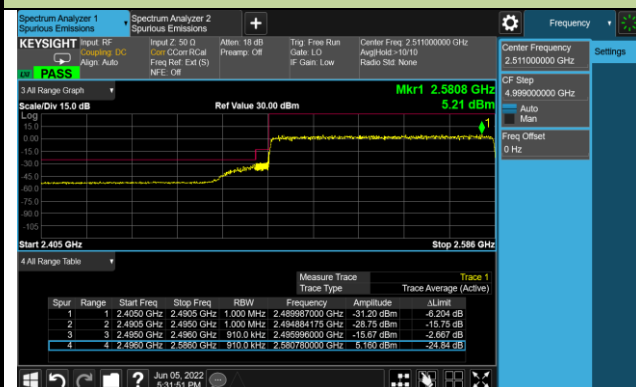


Upper Band Edge

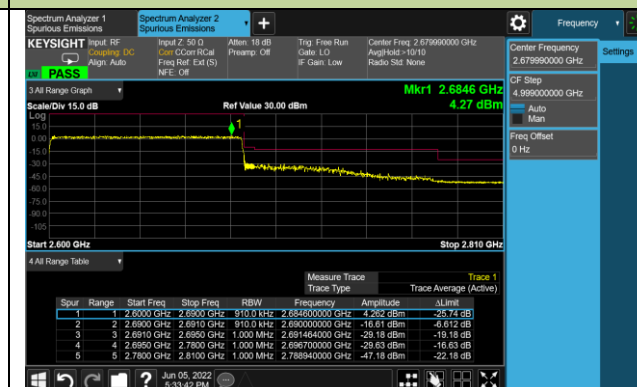


90MHz Channel Bandwidth - Full RB

Lower Band Edge

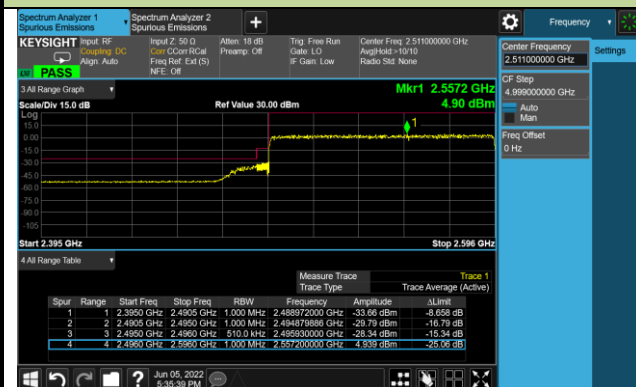


Upper Band Edge

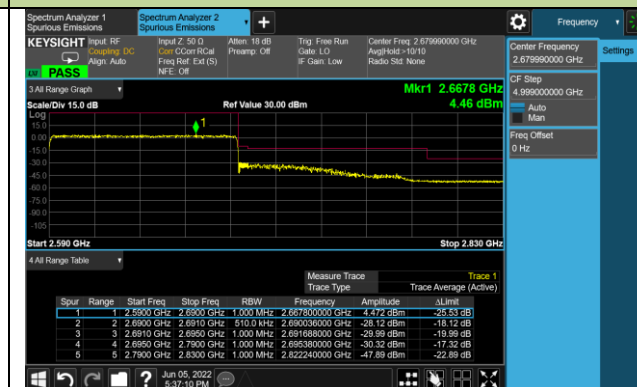


100MHz Channel Bandwidth - Full RB

Lower Band Edge

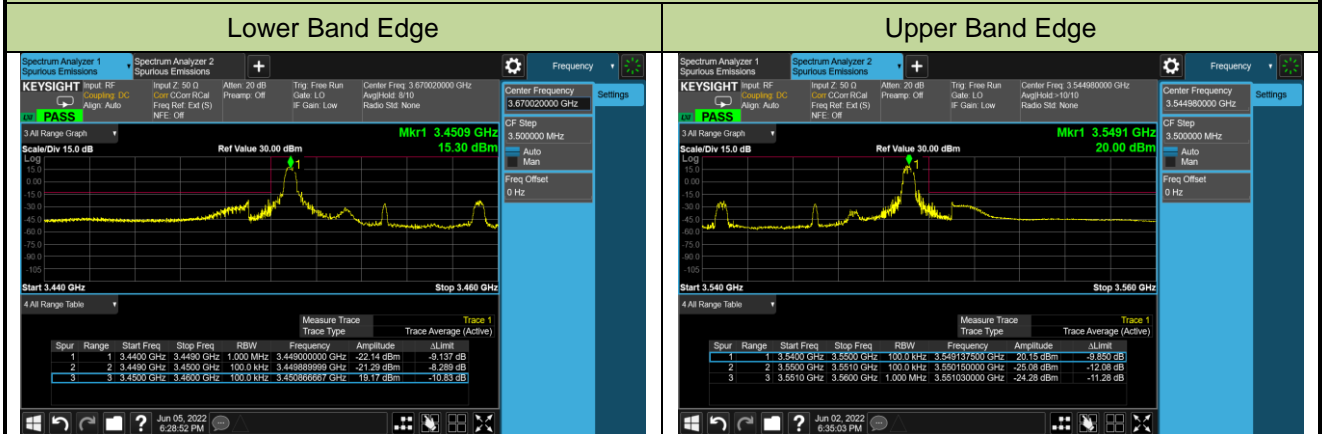


Upper Band Edge

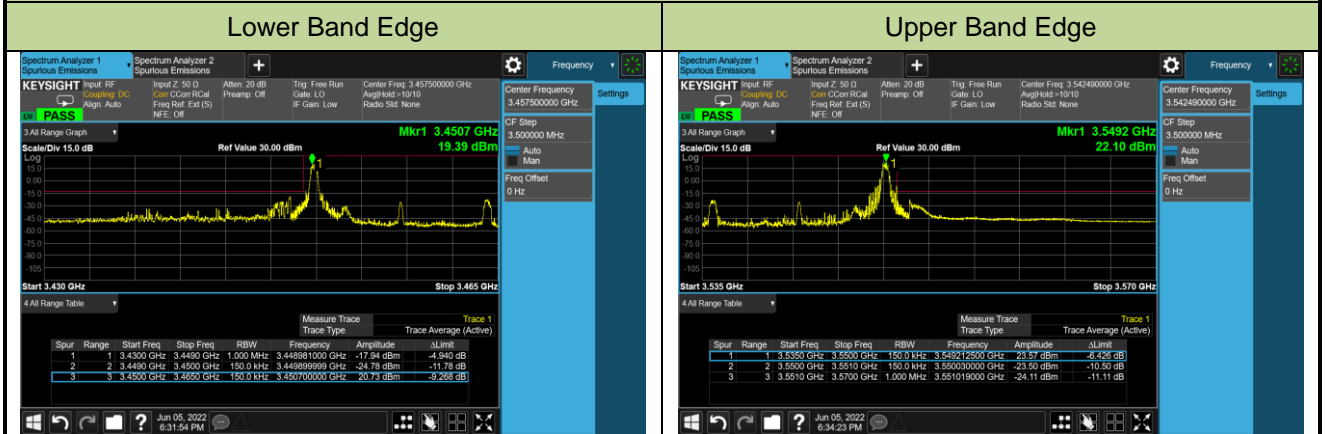


Test Site	SIP-SR1	Test Engineer	Candy Luo
Test Date	2022/06/05	Test Band	n77/n78_SA_HPUE (3450 ~ 3550MHz)

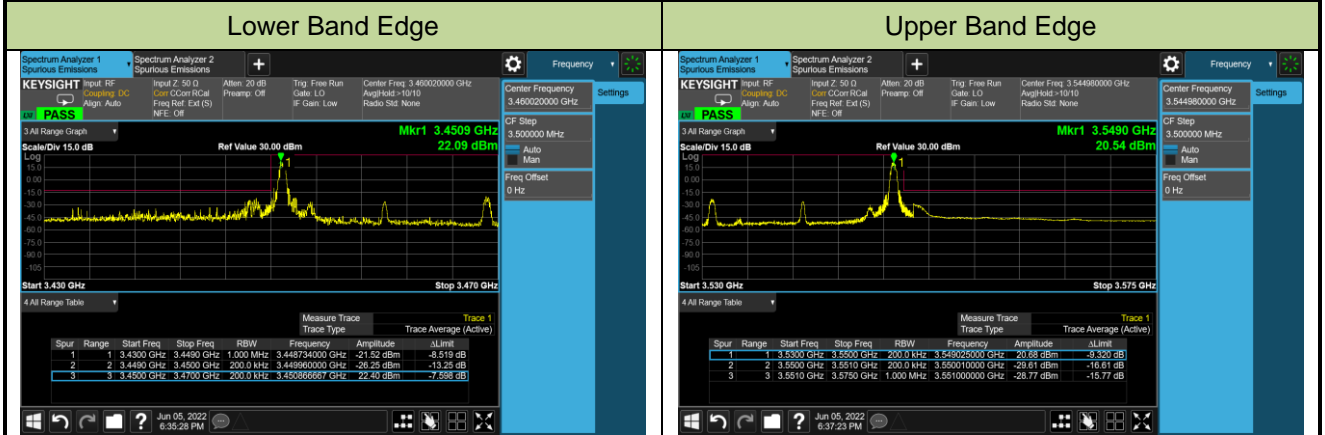
10MHz Channel Bandwidth - 1RB



15MHz Channel Bandwidth - 1RB

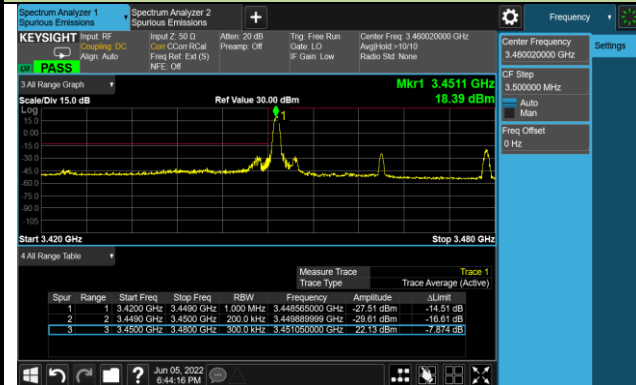


20MHz Channel Bandwidth - 1RB



30MHz Channel Bandwidth - 1RB

Lower Band Edge

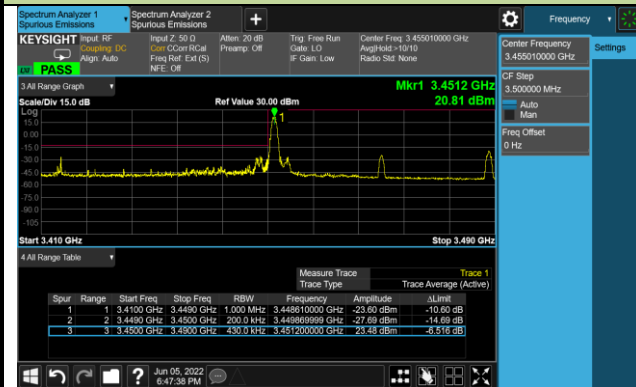


Upper Band Edge

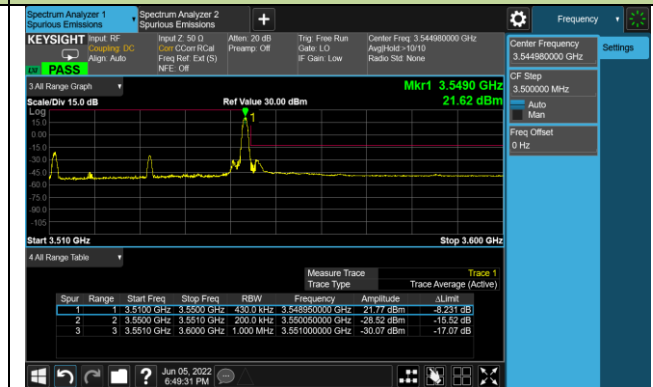


40MHz Channel Bandwidth - 1RB

Lower Band Edge

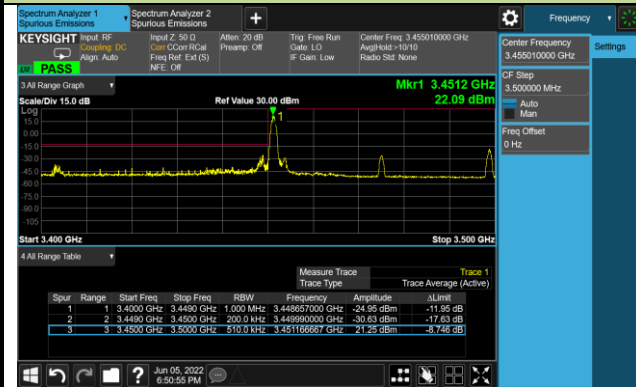


Upper Band Edge



50MHz Channel Bandwidth - 1RB

Lower Band Edge



Upper Band Edge

