

Statement

We **Quectel Wireless Solutions Co., Ltd** declare the following models.

Product: LTE Module

Model Number: EM061K-GL

Hardware Version: R1.0

These are all LTE modules. They use the same baseband chipset and different RF hardware design.

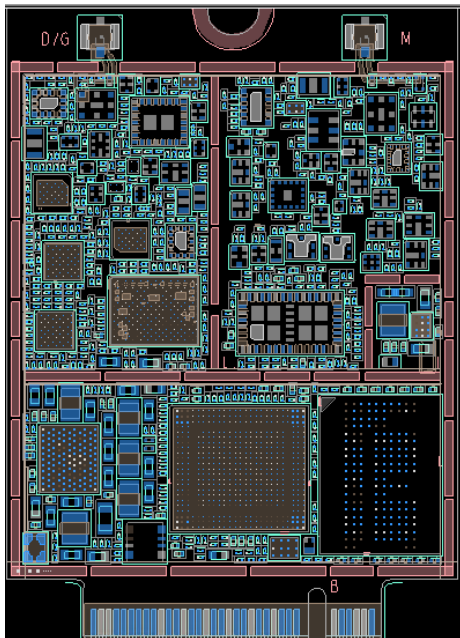
➤ **Software difference on frequencies configuration as below.**

Module	Category	Supported Band	Supported CA
(EM060K-GL)-Original FCC ID: XMR2022EM060KGL IC: 10224A-22EM060KGL	DL Cat6	WCDMA: B1/B2/B3/B4/B5/B6/B8/B19 LTE-FDD: B1/B2/B3/B4/B5/B7/B8/B12/B13/B14/B17/B18/B19/B20/B25/B26/B28/B29/B30/B32/B66/B71 LTE-TDD: B34/B38/B39/B40/B41/B42/B43 /B48 GNSS:L1	Please refer to "Quectel_Module A_Series_CA_Features"
(EM061K-GL)-NEW FCC ID: XMR2023EM061KGL IC: 10224A-23EM061KGL	DL Cat6	WCDMA: B1/B2/B3/B4/B5/B6/B8/B19 LTE-FDD: B1/B2/B3/B4/B5/B7/B8/B12/B13/B14/B17/B18/B19/B20/B25/B26/B28/B29/B30/B32/B66/B71 LTE-TDD: B34/B38/B39/B40/B41 GNSS:L1	Please refer to "Quectel_Module A_Series_CA_Features"

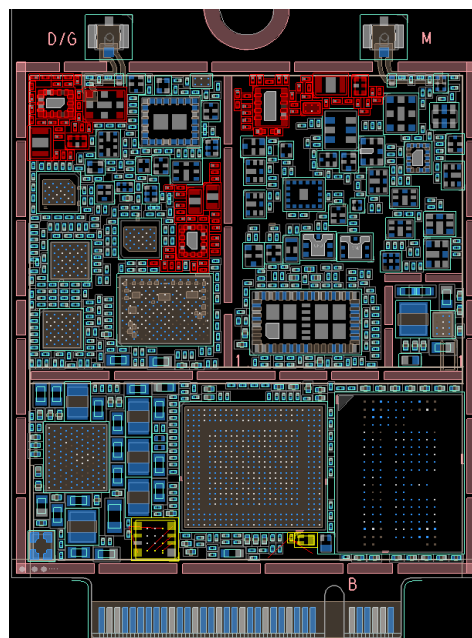
➤ **Hardware difference**

1. compartments usage:

EM060K-GL (Part Description)	Quantity	EM061K-GL (Part Description)	Quantity	
QLN-4642-0-LGA15F-TR-04-0 (LNA for B42/43/48)	1	QLN-4642-0-LGA15F-TR-04-0 (LNA for B42/43/48)	0	B42/43/48 RX
QLN-4650-0-LGA15F-SR-05-0 (LNA for B46)	1	QLN-4650-0-LGA15F-SR-05-0 (LNA for B46)	0	B46 RX
DEA165538BT-2263A1-H (SAW for B46)	2	DEA165538BT-2263A1-H (SAW for B46)	0	B46 RX
QM52042TR13-5K (PA for B42/43/48)	1	QM52042TR13-5K (PA for B42/43/48)	0	B42/43/48 TX
RTC8604 (LNA for GPS)	1	CAN6107C (LNA for GPS)	1	GNSS
SAFFB722MAA0F0AR1X (SAW for B29 RX)	1	NDFH064-0722SA (SAW for B29 RX)	1	B29 RX
SAFFB1G47AA0F0AR1X (SAW for B32 RX)	2	MS11U1G47-RX32C (SAW for B32 RX)	2	B32 RX



PCB: EM060K-GL



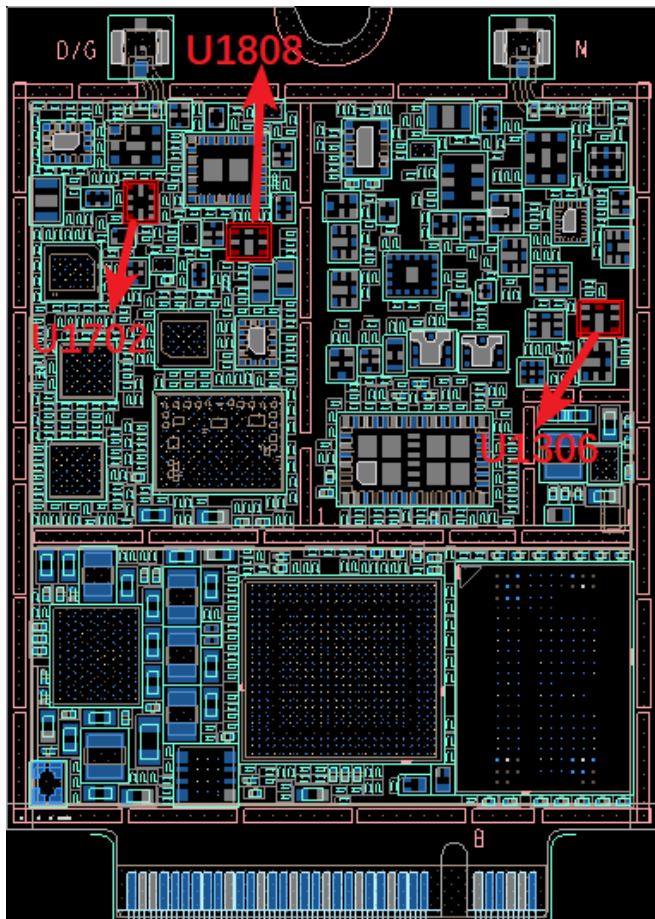
EM061K-GL

2.DUP and SAW

Designator	EM060K-GL	EM061K-GL
U1306	B39781B1250P810 IC RF DPX LTE UNBalance B28AB 1.8x1.4mm H0.475mm RO	SAYRH725MBC0B0AR00 IC RF DPX LTE UNBalance B28AB 1.8x1.4mm H0.6mm RO
U1702	B39162B8666L210 IC RF SAW Extraor GPS_GLOASS_BEIDOU L1/Cellular Unbalance 1.7x1.3mm H0.5mm RO	B39162B8905L210 IC RF SAW Extraor GPS_GLOASS_BEIDOU L1/Cellular Unbalance PINS10 1.7x1.3mm H0.7mm RO
U1808	SATEY1G96AV2F0AR00 IC RF RX filter UNBalance B25/B66/B30 10dBm 1.8x1.4mm H0.6mm RO	B39242B9954P810 IC RF RX filter UNBalance B25/B66/B30 10dBm PINS8 1.8x1.4mm H0.475mm RO

Add the second source for U1702 and U1808 on EM061K-GL

Change the supplier of U1306.



3. Shielding shell

There is a change in the structure of the shielding frame, please refer to the corresponding EUT photos for details.

Their difference shows on above, except Listings above, the others are the same as previous version.

The change will not impact RF performance for the others frequency bands.

Based on the above changes, Power, RSE and EMC of EM061K-GL (FCC ID: XMR2023EM061KGL, IC: 10224A-23EM061KGL) were fully tested in this report, and other items data please refer to the EM061K-GL (FCC ID: XMR2022EM060KGL, IC: 10224A-22EM060KGL)

Name/Surname:

Jian

Position/Title: Certification Manager

Address/Location: Building 5, Shanghai Business Park Phase III (Area B), No.1016

Tianlin Road, Minhang District, Shanghai 200233, China

Issue Date: 2023/6/25