

Statement

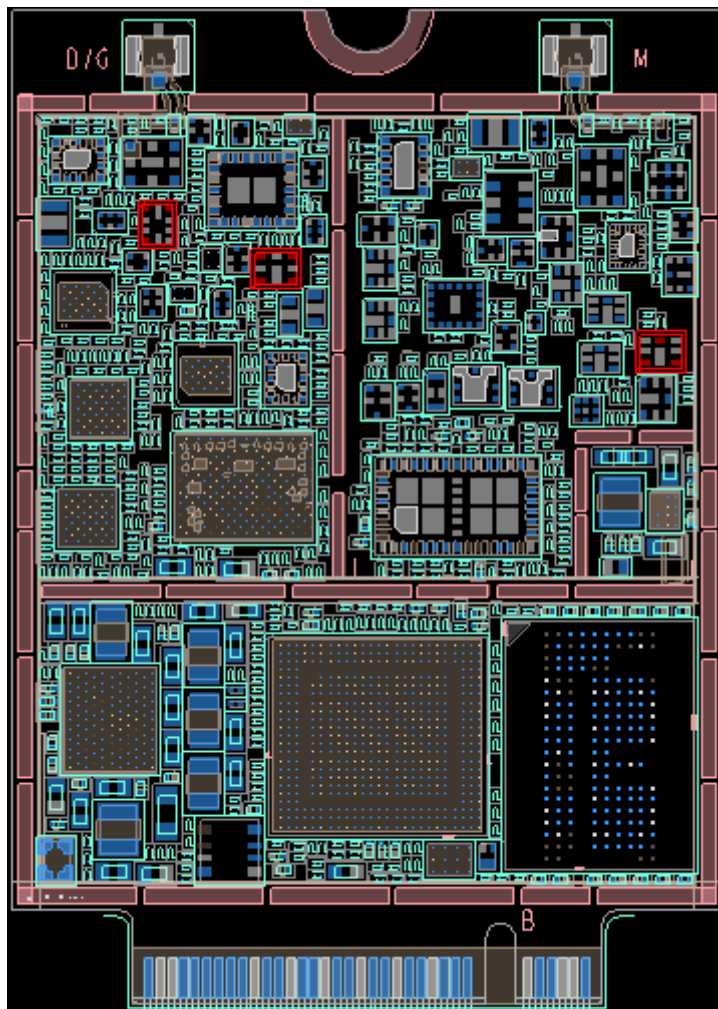
We Quectel Wireless Solutions Co., Ltd declare the following models.

Product Name: LTE-A Cat 6 M.2 Module

Model Number: EM060K-GL

Hardware Version: R1.0

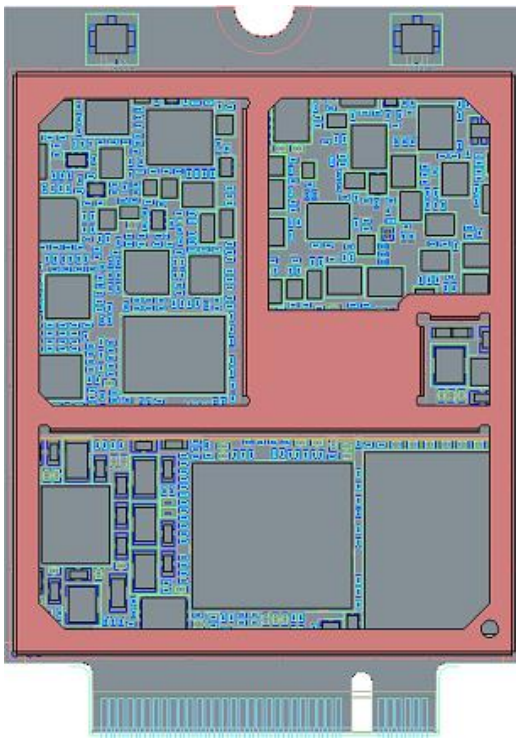
The new version of EM060K-GL share the same HW design with the certificated version, The main differences are the DUP and saw filter as follow:



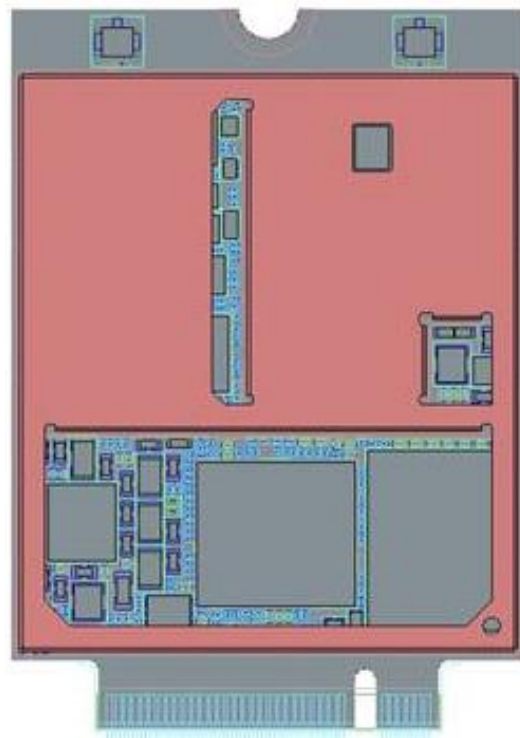
Designator	EM060K-GL (new version) (Part Description)	EM060K-GL (Original) (Part Description)
------------	--	--

U1306 (B28 duplexer)	SAYRH725MBC0B0AR00 MURATA IC RF DPX LTE UNBalance B28AB 1.8x1.4mm H0.6mm RO	B39781B1250P810 RF360 IC RF DPX LTE UNBalance B28AB 1.8x1.4mm H0.475mm RO
U1702 (GPS Extrator)	B39162B8905L210 RF360 IC RF SAW Extraor GPS_GLONASS_BEIDOU L1/Cellular Unbalance PINS10 1.7x1.3mm H0.7mm RO	B39162B8666L210 RF360 IC RF SAW Extraor GPS_GLONASS_BEIDOU L1/Cellular Unbalance 1.7x1.3mm H0.5mm RO
U1808 (B25/B66/B30 RX SAW)	B39242B9954P810 RF360 IC RF RX filter UNBalance B25/B66/B30 10dBm PINS8 1.8x1.4mm H0.475mm RO	SATEY1G96AV2F0AR00 MURATA IC RF RX filter UNBalance B25/B66/B30 10dBm 1.8x1.4mm H0.6mm RO

1. There are some differences in the shielding frame of EM060K-GL original and new version.



EM060K-GL shielding frame(Module original)



EM060K-GL shielding frame(new version)

Above changes won't impact the protocol and RF performance for original frequency bands.

Your assistance on this matter is highly appreciated.

Sincerely,

Name: Jean Hu

Title: Certification Section