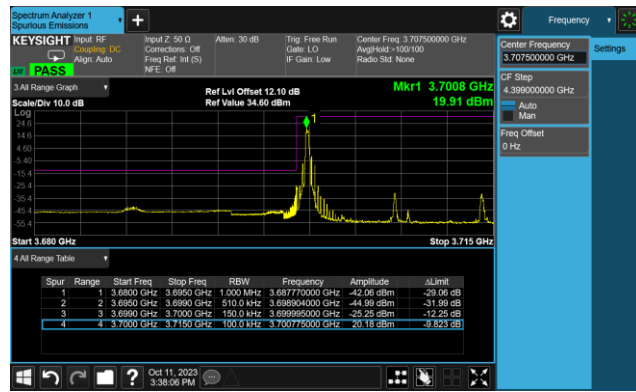
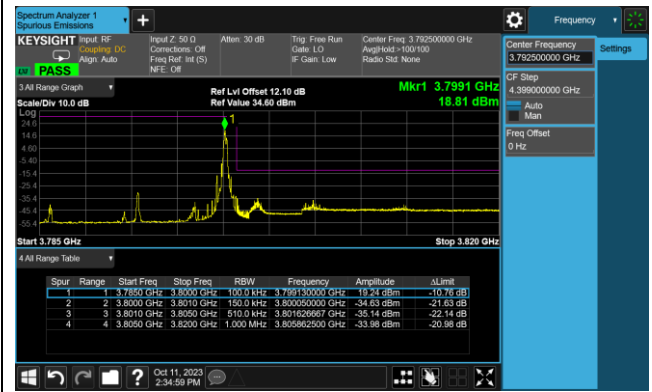


15MHz Channel Bandwidth - 1RB

Lower Band Edge

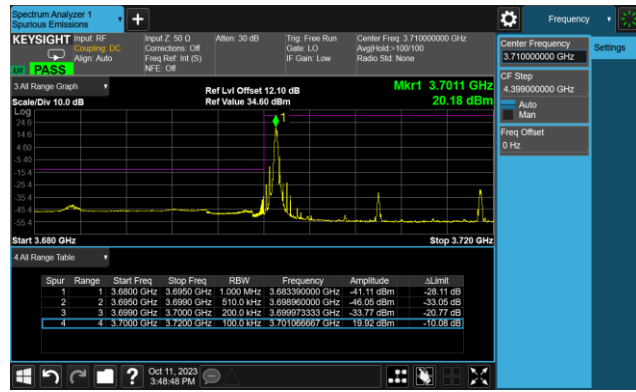


Upper Band Edge

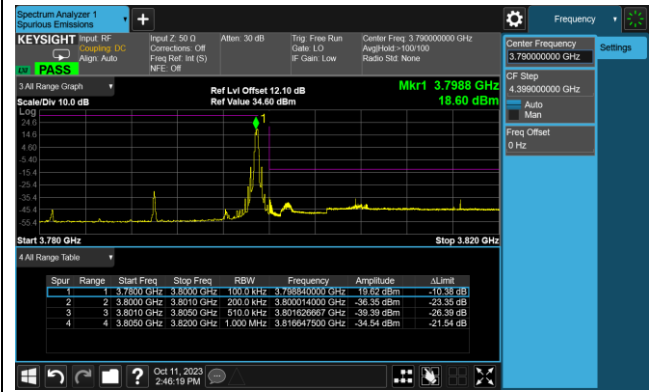


20MHz Channel Bandwidth - 1RB

Lower Band Edge

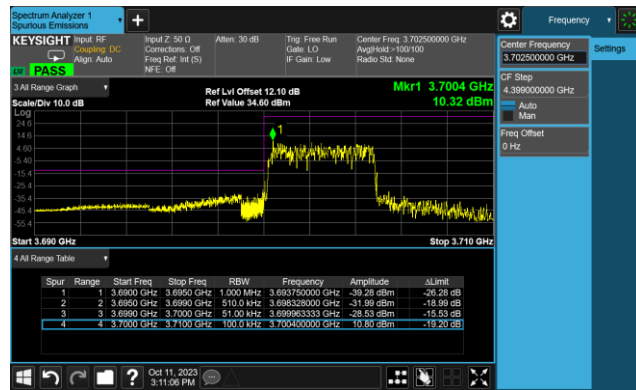


Upper Band Edge

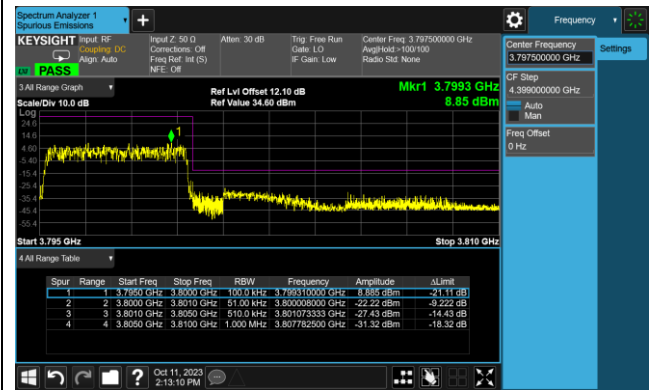


### 5MHz Channel Bandwidth - Full RB

#### Lower Band Edge

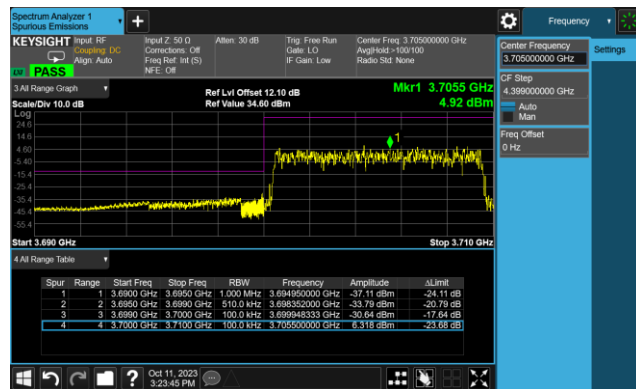


#### Upper Band Edge

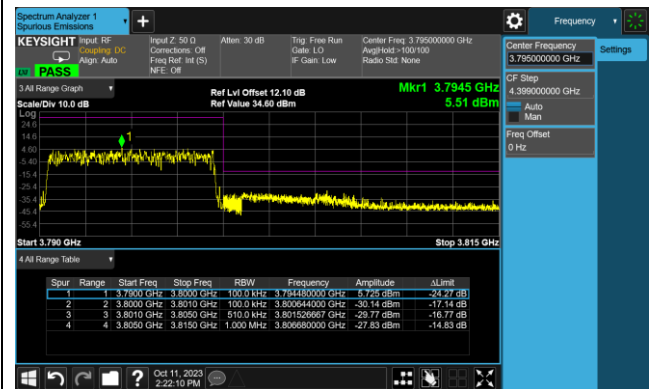


### 10MHz Channel Bandwidth - Full RB

#### Lower Band Edge

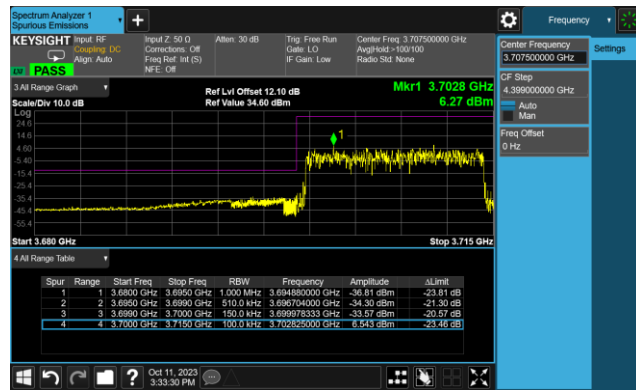


#### Upper Band Edge

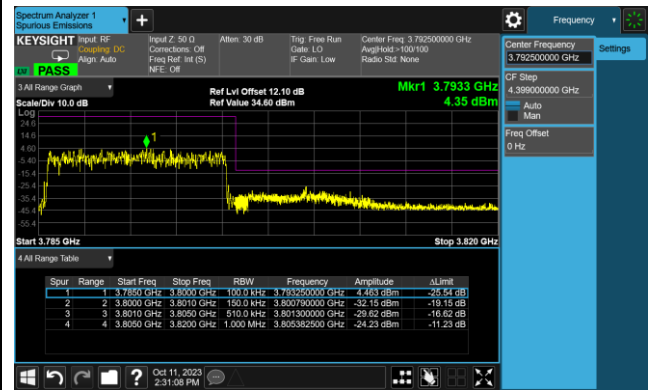


### 15MHz Channel Bandwidth - Full RB

#### Lower Band Edge

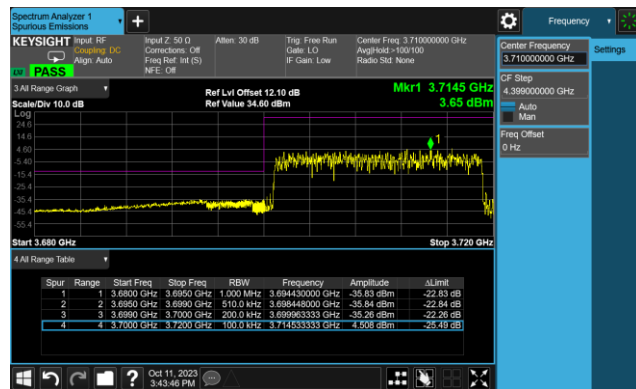


#### Upper Band Edge

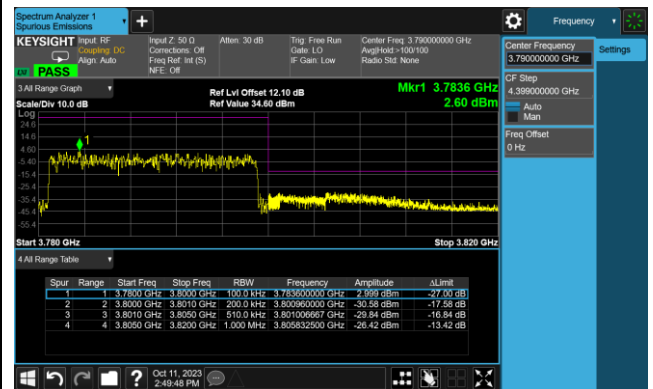


### 20MHz Channel Bandwidth - Full RB

#### Lower Band Edge



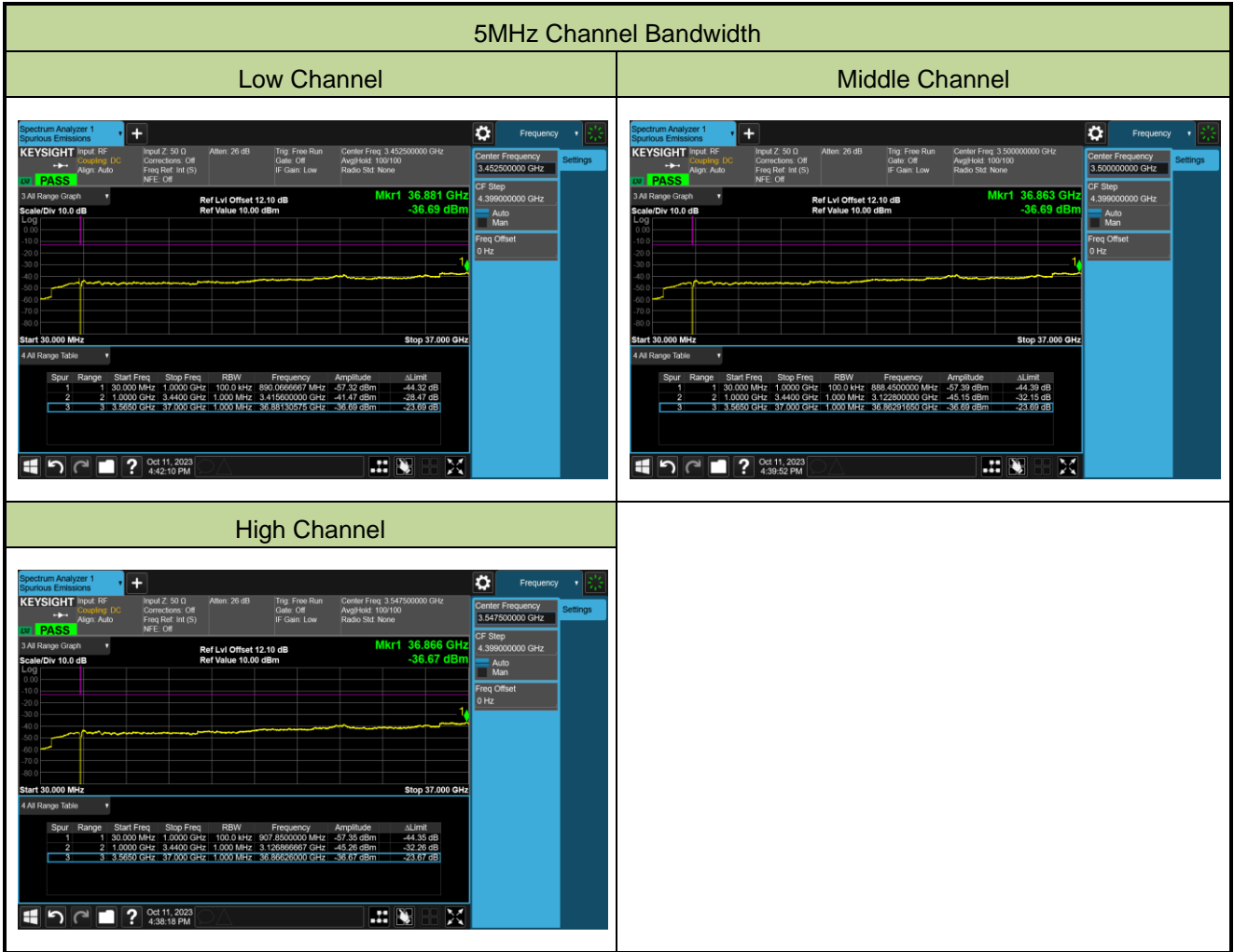
#### Upper Band Edge

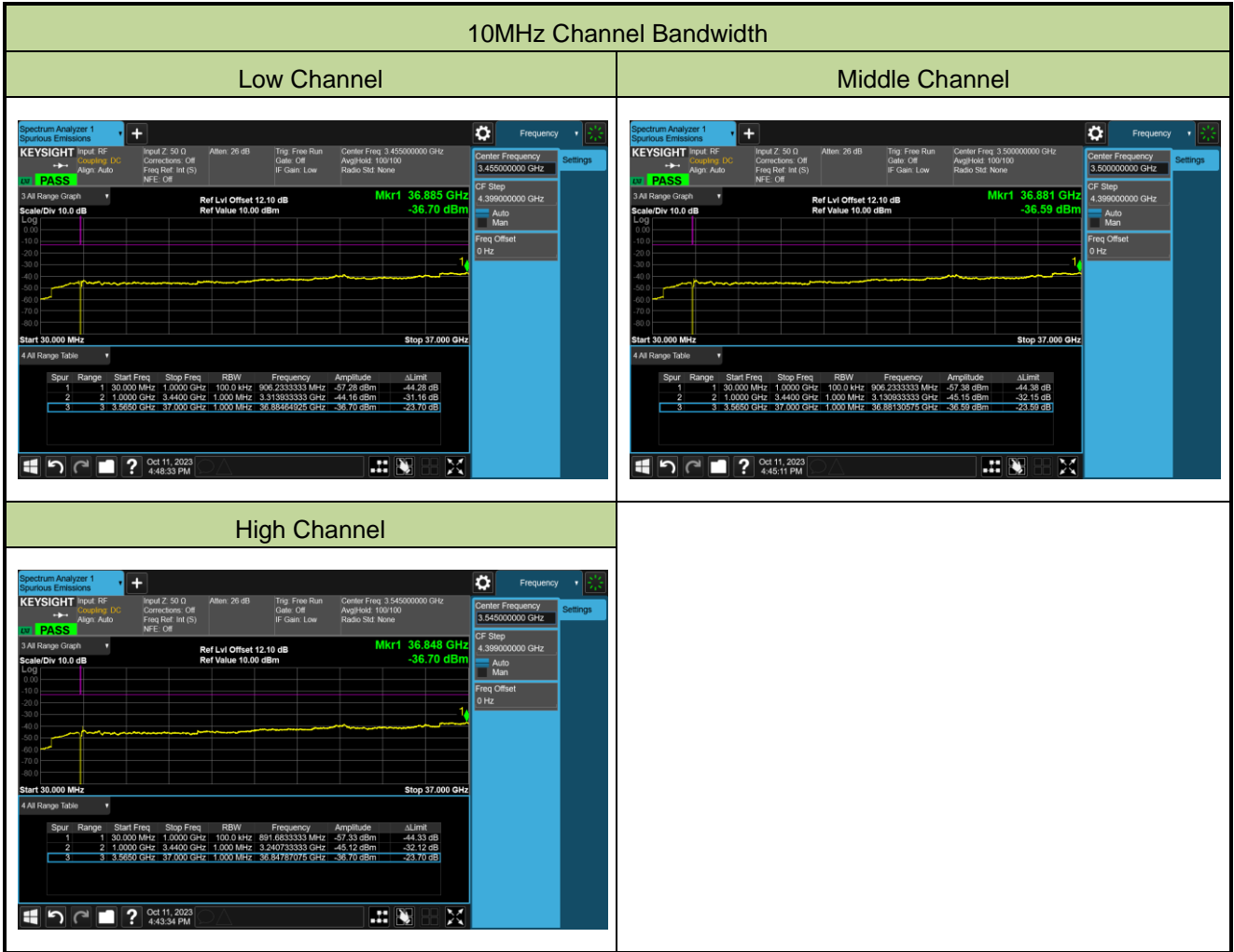


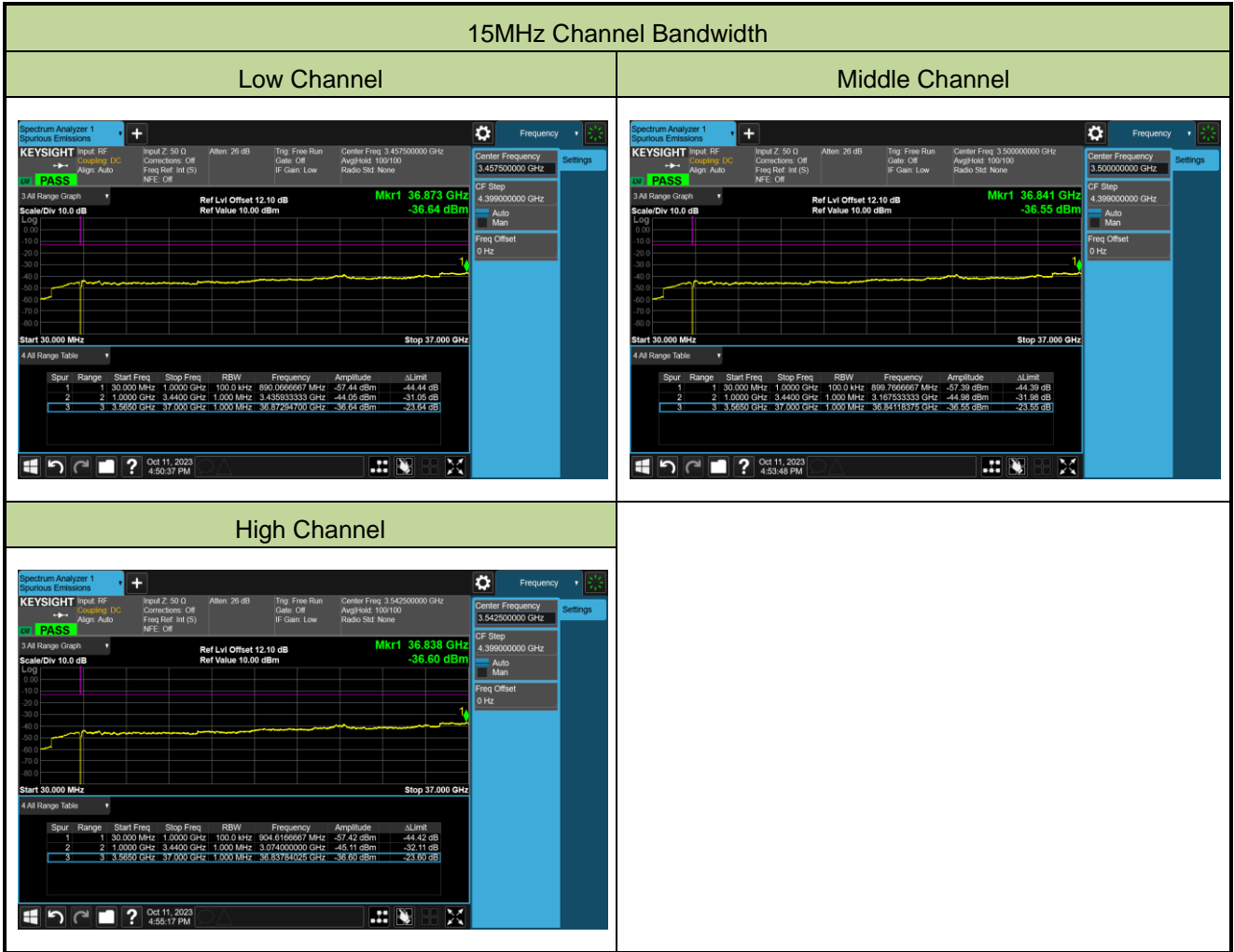
**A.6 Conducted Spurious Emissions Test Result**

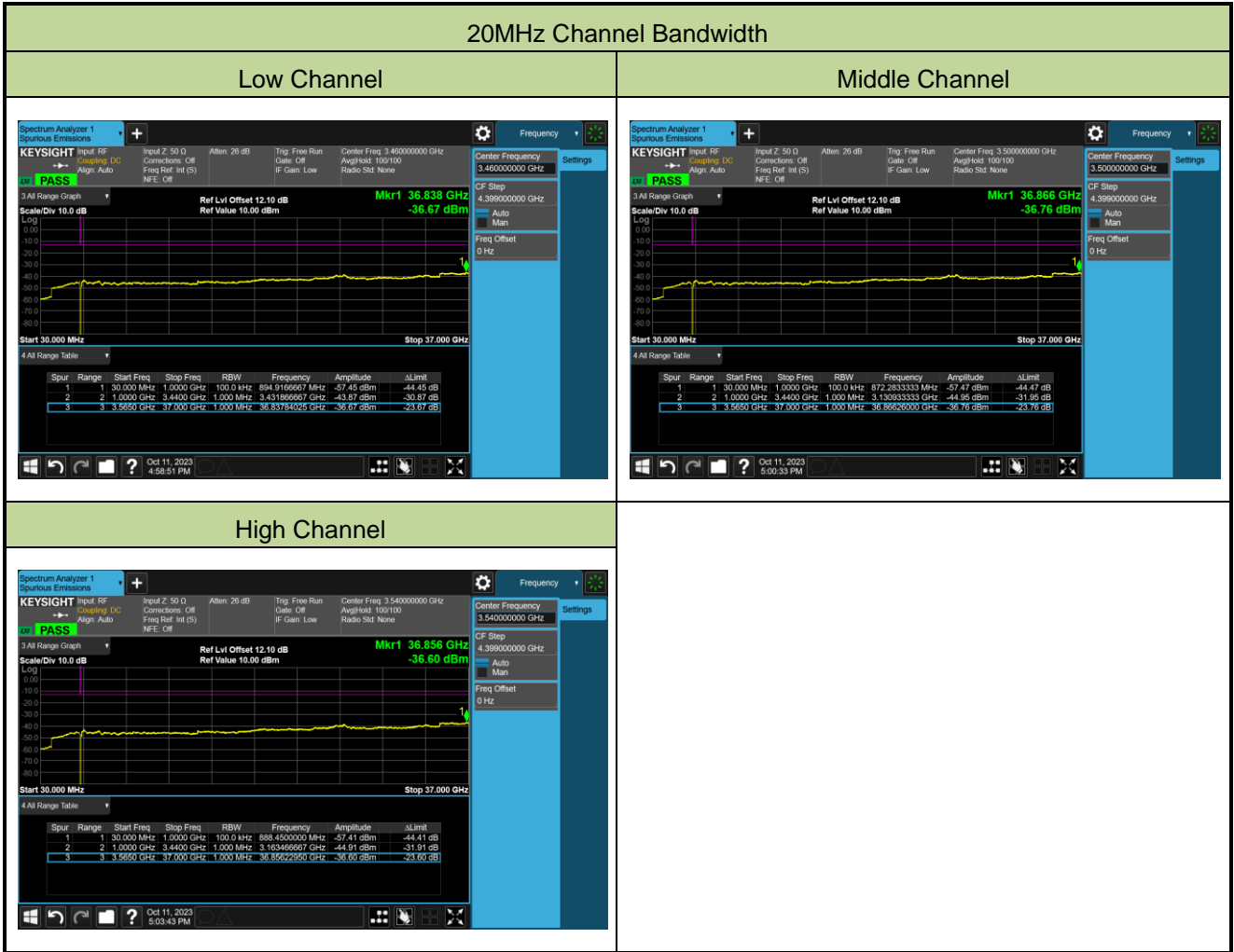
Test Site	SIP-SR1	Test Engineer	Yoniter Yang
Test Date	2023-10-11	Test Band	LTE Band 42, 1RB, QPSK

Channel Bandwidth (MHz)	Frequency (MHz)	Frequency Range (MHz)	Max Spurious Emissions (dBm)	Limit (dBm)	Result
5	3452.50	30 ~ 37000	-36.69	≤ -13.00	Pass
5	3500.00	30 ~ 37000	-36.69	≤ -13.00	Pass
5	3547.50	30 ~ 37000	-36.67	≤ -13.00	Pass
10	3455.00	30 ~ 37000	-36.70	≤ -13.00	Pass
10	3500.00	30 ~ 37000	-36.59	≤ -13.00	Pass
10	3545.00	30 ~ 37000	-36.70	≤ -13.00	Pass
15	3457.50	30 ~ 37000	-36.64	≤ -13.00	Pass
15	3500.00	30 ~ 37000	-36.55	≤ -13.00	Pass
15	3542.50	30 ~ 37000	-36.60	≤ -13.00	Pass
20	3460.00	30 ~ 37000	-36.67	≤ -13.00	Pass
20	3500.00	30 ~ 37000	-36.76	≤ -13.00	Pass
20	3540.00	30 ~ 37000	-36.60	≤ -13.00	Pass





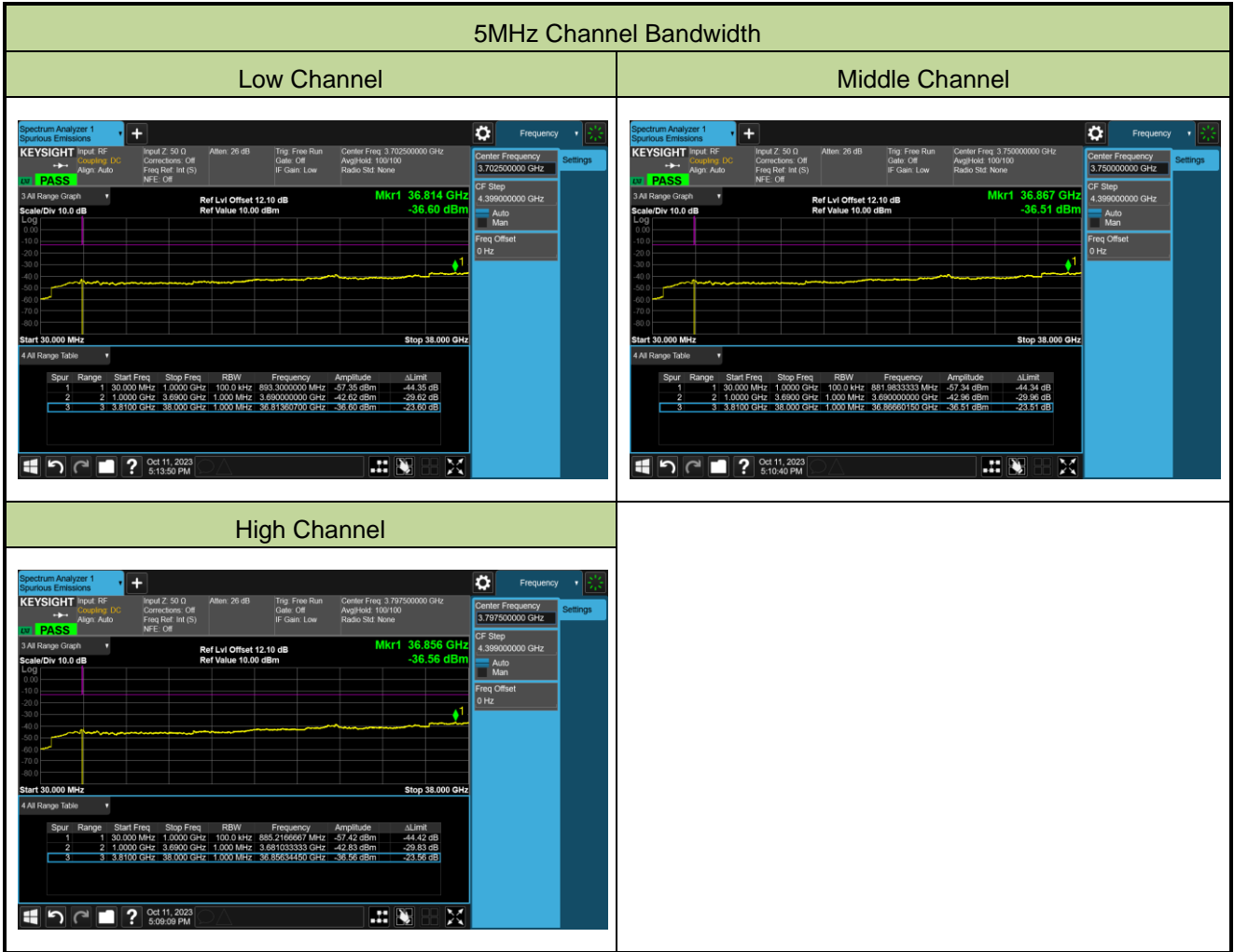


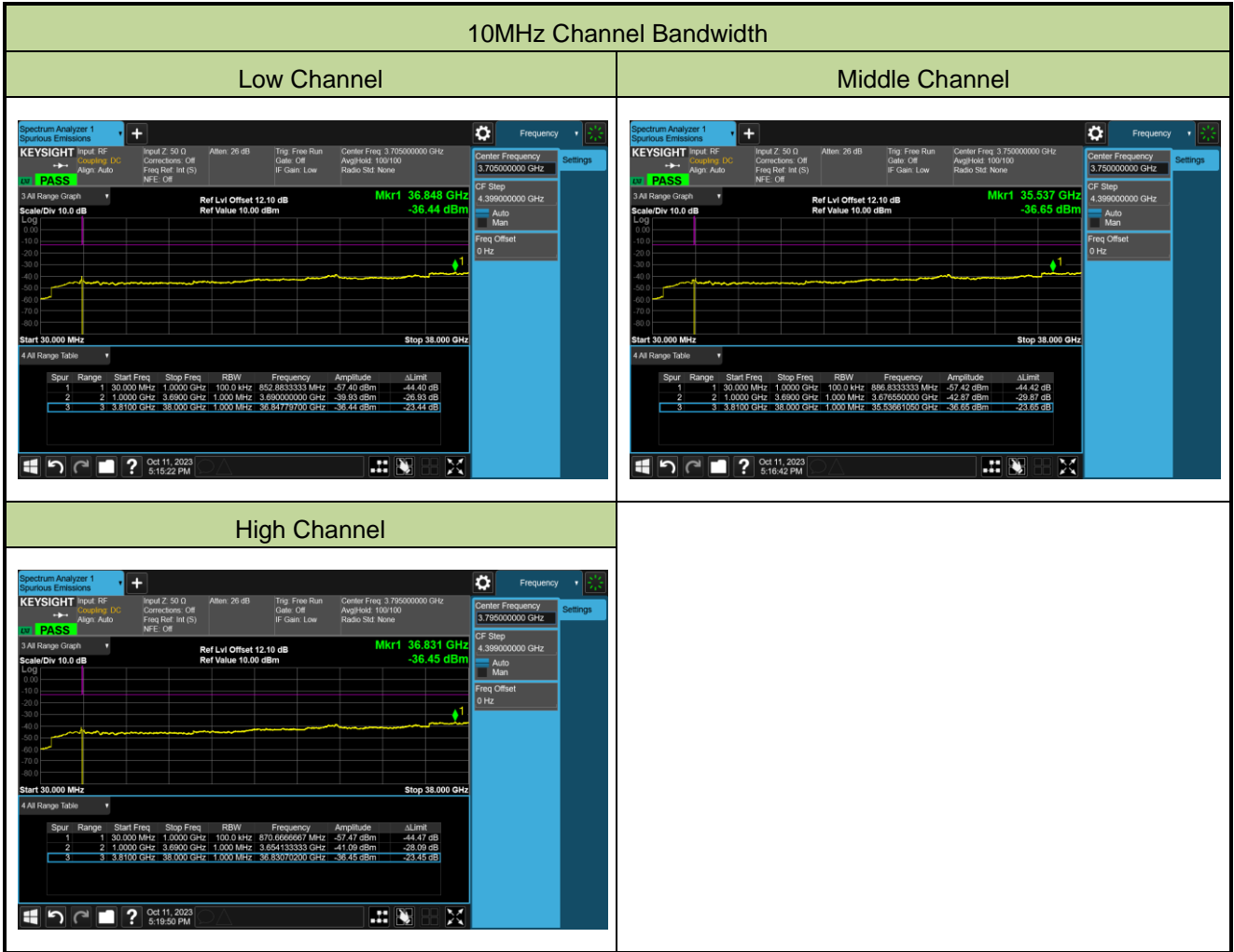


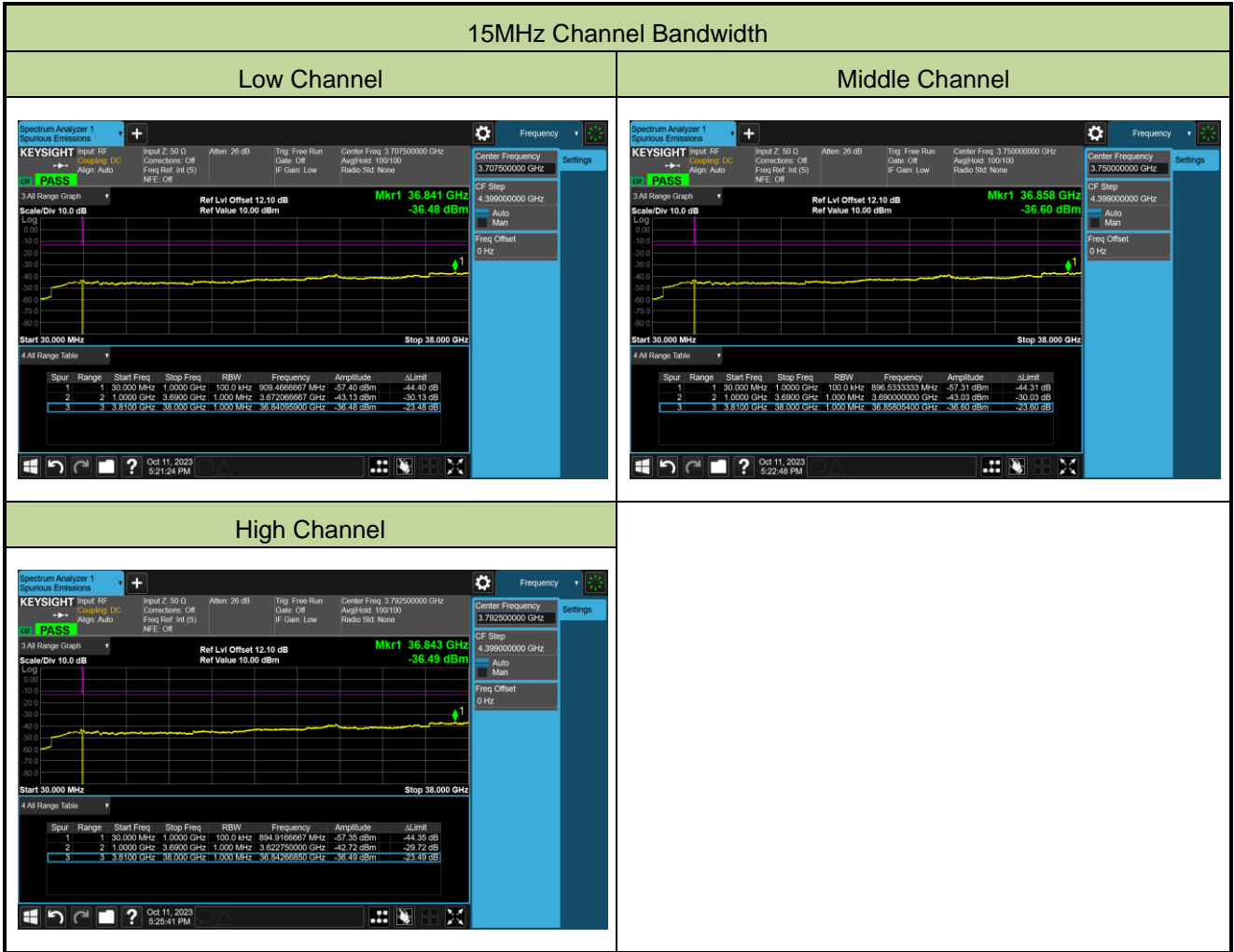


Test Site	SIP-SR1	Test Engineer	Yoniter Yang
Test Date	2023-10-11	Test Band	LTE Band 43 1RB, QPSK

Channel Bandwidth (MHz)	Frequency (MHz)	Frequency Range (MHz)	Max Spurious Emissions (dBm)	Limit (dBm)	Result
5	3702.50	30 ~ 38000	-36.60	≤ -13.00	Pass
5	3750.00	30 ~ 38000	-36.51	≤ -13.00	Pass
5	3797.50	30 ~ 38000	-36.56	≤ -13.00	Pass
10	3705.00	30 ~ 38000	-36.44	≤ -13.00	Pass
10	3750.00	30 ~ 38000	-36.65	≤ -13.00	Pass
10	3795.00	30 ~ 38000	-36.45	≤ -13.00	Pass
15	3707.50	30 ~ 38000	-36.48	≤ -13.00	Pass
15	3750.00	30 ~ 38000	-36.60	≤ -13.00	Pass
15	3792.50	30 ~ 38000	-36.49	≤ -13.00	Pass
20	3710.00	30 ~ 38000	-36.49	≤ -13.00	Pass
20	3750.00	30 ~ 38000	-36.41	≤ -13.00	Pass
20	3790.00	30 ~ 38000	-36.59	≤ -13.00	Pass









**A.7 Radiated Spurious Emissions Test Result**

Test Site	WZ-AC2	Test Engineer	Carl Jiang
Test Date	2023-09-29 ~ 2023-09-30	Test Band	LTE Band 42, 1RB, QPSK

Frequency (MHz)	Reading Level (dBμV)	Factor (dB/m)	Measure Level (dBμV/m)	Limit (dBμV/m)	Margin (dB)	Detector	Polarization
<b>Low Channel</b>							
56.230	-2.5	20.0	17.5	82.3	-64.8	Quasi-peak	Horizontal
489.230	-2.1	25.2	23.1	82.3	-59.2	Quasi-peak	Horizontal
32.540	19.9	17.1	37.0	82.3	-45.3	Quasi-peak	Vertical
104.800	-2.4	18.6	16.2	82.3	-66.1	Quasi-peak	Vertical
7545.000	32.6	12.0	44.6	82.3	-37.7	Peak	Horizontal
11565.500	31.5	17.6	49.1	82.3	-33.2	Peak	Horizontal
10834.500	31.9	16.6	48.5	82.3	-33.8	Peak	Vertical
14455.500	31.3	19.2	50.5	82.3	-31.8	Peak	Vertical
<b>Middle Channel</b>							
50.230	-2.2	20.5	18.3	82.3	-64.0	Quasi-peak	Horizontal
822.260	-2.6	30.8	28.2	82.3	-54.1	Quasi-peak	Horizontal
33.890	19.9	17.0	36.9	82.3	-45.4	Quasi-peak	Vertical
55.240	9.6	20.1	29.7	82.3	-52.6	Quasi-peak	Vertical
9636.000	32.6	13.5	46.1	82.3	-36.2	Peak	Horizontal
14821.000	32.3	19.3	51.6	82.3	-30.7	Peak	Horizontal
10452.000	32.3	15.6	47.9	82.3	-34.4	Peak	Vertical
14022.000	31.7	18.8	50.5	82.3	-31.8	Peak	Vertical
<b>High Channel</b>							
46.320	-2.4	20.4	18.0	82.3	-64.3	Quasi-peak	Horizontal
513.540	-2.4	25.4	23.0	82.3	-59.3	Quasi-peak	Horizontal
32.560	19.6	17.1	36.7	82.3	-45.6	Quasi-peak	Vertical
53.540	10.9	20.3	31.2	82.3	-51.1	Quasi-peak	Vertical
9721.000	33.4	13.7	47.1	82.3	-35.2	Peak	Horizontal
13622.500	32.2	18.6	50.8	82.3	-31.5	Peak	Horizontal
7094.500	34.6	10.9	45.5	82.3	-36.8	Peak	Vertical
11531.500	31.6	17.2	48.8	82.3	-33.5	Peak	Vertical

Note: Measure Level (dBμV/m) = Reading Level (dBμV) + Factor (dB/m)

Factor (dB/m) = Cable Loss (dB) + Antenna Factor (dB/m).

Test Site	WZ-AC2	Test Engineer	Carl Jiang
Test Date	2023-09-29 ~ 2023-09-30	Test Band	LTE Band 43, 1RB, QPSK

Frequency (MHz)	Reading Level (dBμV)	Factor (dB/m)	Measure Level (dBμV/m)	Limit (dBμV/m)	Margin (dB)	Detector	Polarization
<b>Low Channel</b>							
54.360	-2.2	20.2	18.0	82.3	-64.3	Quasi-peak	Horizontal
599.010	-2.4	27.6	25.2	82.3	-57.1	Quasi-peak	Horizontal
32.890	18.6	17.1	35.7	82.3	-46.6	Quasi-peak	Vertical
53.310	10.9	20.3	31.2	82.3	-51.1	Quasi-peak	Vertical
10809.000	32.1	16.7	48.8	82.3	-33.5	Peak	Horizontal
14991.000	32.4	19.0	51.4	82.3	-30.9	Peak	Horizontal
7400.500	37.7	11.8	49.5	82.3	-32.8	Peak	Vertical
13367.500	32.1	18.6	50.7	82.3	-31.6	Peak	Vertical
<b>Middle Channel</b>							
54.230	-2.5	20.2	17.7	82.3	-64.6	Quasi-peak	Horizontal
596.360	-2.1	27.6	25.5	82.3	-56.8	Quasi-peak	Horizontal
33.580	18.5	17.1	35.6	82.3	-46.7	Quasi-peak	Vertical
53.240	10.5	20.3	30.8	82.3	-51.5	Quasi-peak	Vertical
10554.000	32.6	15.3	47.9	82.3	-34.4	Peak	Horizontal
14812.500	32.1	19.0	51.1	82.3	-31.2	Peak	Horizontal
7494.000	35.6	12.0	47.6	82.3	-34.7	Peak	Vertical
11557.000	32.1	17.7	49.8	82.3	-32.5	Peak	Vertical
<b>High Channel</b>							
52.750	-2.2	20.4	18.2	82.3	-64.1	Quasi-peak	Horizontal
547.210	-2.6	26.0	23.4	82.3	-58.9	Quasi-peak	Horizontal
32.890	18.0	17.1	35.1	82.3	-47.2	Quasi-peak	Vertical
50.020	9.0	20.5	29.5	82.3	-52.8	Quasi-peak	Vertical
9134.500	32.1	13.4	45.5	82.3	-36.8	Peak	Horizontal
14438.500	31.8	19.1	50.9	82.3	-31.4	Peak	Horizontal
7587.500	41.6	11.4	53.0	82.3	-29.3	Peak	Vertical
14787.000	33.0	18.8	51.8	82.3	-30.5	Peak	Vertical

Note: Measure Level (dBμV/m) = Reading Level (dBμV) + Factor (dB/m)

Factor (dB/m) = Cable Loss (dB) + Antenna Factor (dB/m).

## **Appendix B - Test Setup Photograph**

Refer to "2309RSU052-UT" file.



## Appendix C - EUT Photograph

Refer to "2309RSU052-UE" file.