



Report No.: SEWA2212000088RG02
Rev.: 01
Page: 1 of 99

Appendix B.18

NR Band n25



Unless otherwise agreed in writing, this document is issued by the Company subject to its General Conditions of Service printed overleaf, available on request or accessible at <http://www.sgs.com/en/Terms-and-Conditions.aspx> and, for electronic format documents, subject to Terms and Conditions for Electronic Documents at <http://www.sgs.com/en/Terms-and-Conditions/Terms-e-Documents.aspx>. Attention is drawn to the limitation of liability, indemnification and jurisdiction issues defined therein. Any holder of this document is advised that information contained hereon reflects the Company's findings at the time of its intervention only and within the limits of Client's instructions, if any. The Company's sole responsibility is to its Client and this document does not exonerate parties to a transaction from exercising all their rights and obligations under the transaction documents. This document cannot be reproduced except in full, without prior written approval of the Company. Any unauthorized alteration, forgery or falsification of the content or appearance of this document is unlawful and offenders may be prosecuted to the fullest extent of the law. Unless otherwise stated the results shown in this test report refer only to the sample(s) tested and such sample(s) are retained for 30 days only.
Attention: To check the authenticity of testing/inspection report & certificate, please contact us at telephone: (86-755) 8307 1443, or email: CN.Doccheck@sgs.com

South of No. 6 Plant, No. 1, Runsheng Road, Suzhou Industrial Park, Suzhou Area, China (Jiangsu) Pilot Free Trade Zone 215000 t (86-512) 62992980 www.sgs.com.cn
中国·苏州·中国(江苏)自由贸易试验区苏州片区苏州工业园区海胜路1号的6号厂房南楼 邮编: 215000 t (86-512) 62992980 sgs.china@sgs.com

Effective (Isotropic) Radiated Power Output Data for SA

Test Result

Band	SCS	Bandwidth	Modulation	Channel	RB Config	Power (dBm)	EIRP (dBm)	Limit (dBm)	Verdict
N25	15	5	DFT-PI2BPSK	L	Inner_1RB_Left	23.63	23.99	33	PASS
N25	15	5	DFT-PI2BPSK	L	Inner_1RB_Right	23.67	24.03	33	PASS
N25	15	5	DFT-PI2BPSK	L	Outer_Full	22.7	23.06	33	PASS
N25	15	5	DFT-QPSK	L	Inner_1RB_Left	23.64	24	33	PASS
N25	15	5	DFT-QPSK	L	Inner_1RB_Right	23.69	24.05	33	PASS
N25	15	5	DFT-QPSK	L	Outer_Full	22.77	23.13	33	PASS
N25	15	5	DFT-16QAM	L	Inner_1RB_Left	22.47	22.83	33	PASS
N25	15	5	DFT-16QAM	L	Inner_1RB_Right	22.58	22.94	33	PASS
N25	15	5	DFT-16QAM	L	Outer_Full	21.72	22.08	33	PASS
N25	15	5	DFT-64QAM	L	Inner_1RB_Left	21.21	21.57	33	PASS
N25	15	5	DFT-64QAM	L	Inner_1RB_Right	21.21	21.57	33	PASS
N25	15	5	DFT-64QAM	L	Outer_Full	21.26	21.62	33	PASS
N25	15	5	DFT-256QAM	L	Inner_1RB_Left	19.1	19.46	33	PASS
N25	15	5	DFT-256QAM	L	Inner_1RB_Right	19.12	19.48	33	PASS
N25	15	5	DFT-256QAM	L	Outer_Full	19.18	19.54	33	PASS
N25	15	5	DFT-PI2BPSK	M	Inner_1RB_Left	23.87	24.23	33	PASS
N25	15	5	DFT-PI2BPSK	M	Inner_1RB_Right	23.88	24.24	33	PASS
N25	15	5	DFT-PI2BPSK	M	Outer_Full	22.91	23.27	33	PASS
N25	15	5	DFT-QPSK	M	Inner_1RB_Left	23.83	24.19	33	PASS
N25	15	5	DFT-QPSK	M	Inner_1RB_Right	23.8	24.16	33	PASS
N25	15	5	DFT-QPSK	M	Outer_Full	22.89	23.25	33	PASS



Unless otherwise agreed in writing, this document is issued by the Company subject to its General Conditions of Service printed overleaf, available on request or accessible at <http://www.sgs.com/en/Terms-and-Conditions.aspx> and, for electronic format documents, subject to Terms and Conditions for Electronic Documents at <http://www.sgs.com/en/Terms-and-Conditions/Terms-e-Documents.aspx>. Attention is drawn to the limitation of liability, indemnification and jurisdiction issues defined therein. Any holder of this document is advised that information contained hereon reflects the Company's findings at the time of its intervention only and within the limits of Client's instructions, if any. The Company's sole responsibility is to its Client and this document does not exonerate parties to a transaction from exercising all their rights and obligations under the transaction documents. This document cannot be reproduced except in full, without prior written approval of the Company. Any unauthorized alteration, forgery or falsification of the content or appearance of this document is unlawful and offenders may be prosecuted to the fullest extent of the law. Unless otherwise stated the results shown in this test report refer only to the sample(s) tested and such sample(s) are retained for 30 days only.

Attention: To check the authenticity of testing/inspection report & certificate, please contact us at telephone: (86-755) 8307 1443, or email: CN.Doccheck@sgs.com

South of No. 6 Plant, No. 1, Pansheng Road, Suzhou Industrial Park, Suzhou Area, China (Jiangsu) Pilot Free Trade Zone 215000
 中国·苏州·中国(江苏)自由贸易试验区苏州片区苏州工业园区海胜路1号的6号厂房南楼 邮编: 215000

t (86-512) 62992980 www.sgs.com.cn
 t (86-512) 62992980 sgs.china@sgs.com



Report No.: SEWA2212000088RG02

Rev.: 01

Page: 3 of 99

N25	15	5	DFT-16QAM	M	Inner_1RB_Left	22.44	22.8	33	PASS
N25	15	5	DFT-16QAM	M	Inner_1RB_Righ t	22.51	22.87	33	PASS
N25	15	5	DFT-16QAM	M	Outer_Full	21.58	21.94	33	PASS
N25	15	5	DFT-64QAM	M	Inner_1RB_Left	21.22	21.58	33	PASS
N25	15	5	DFT-64QAM	M	Inner_1RB_Righ t	21.32	21.68	33	PASS
N25	15	5	DFT-64QAM	M	Outer_Full	21.42	21.78	33	PASS
N25	15	5	DFT-256QAM	M	Inner_1RB_Left	19.34	19.7	33	PASS
N25	15	5	DFT-256QAM	M	Inner_1RB_Righ t	19.38	19.74	33	PASS
N25	15	5	DFT-256QAM	M	Outer_Full	19.38	19.74	33	PASS
N25	15	5	DFT-PI2BPS K	H	Inner_1RB_Left	23.77	24.13	33	PASS
N25	15	5	DFT-PI2BPS K	H	Inner_1RB_Righ t	23.76	24.12	33	PASS
N25	15	5	DFT-PI2BPS K	H	Outer_Full	22.86	23.22	33	PASS
N25	15	5	DFT-QPSK	H	Inner_1RB_Left	23.76	24.12	33	PASS
N25	15	5	DFT-QPSK	H	Inner_1RB_Righ t	23.76	24.12	33	PASS
N25	15	5	DFT-QPSK	H	Outer_Full	22.83	23.19	33	PASS
N25	15	5	DFT-16QAM	H	Inner_1RB_Left	22.38	22.74	33	PASS
N25	15	5	DFT-16QAM	H	Inner_1RB_Righ t	22.37	22.73	33	PASS
N25	15	5	DFT-16QAM	H	Outer_Full	21.81	22.17	33	PASS
N25	15	5	DFT-64QAM	H	Inner_1RB_Left	21.16	21.52	33	PASS
N25	15	5	DFT-64QAM	H	Inner_1RB_Righ t	21.24	21.6	33	PASS
N25	15	5	DFT-64QAM	H	Outer_Full	21.41	21.77	33	PASS
N25	15	5	DFT-256QAM	H	Inner_1RB_Left	19.23	19.59	33	PASS
N25	15	5	DFT-256QAM	H	Inner_1RB_Righ t	19.3	19.66	33	PASS
N25	15	5	DFT-256QAM	H	Outer_Full	19.24	19.6	33	PASS
N25	15	10	DFT-PI2BPS K	L	Inner_1RB_Left	23.75	24.11	33	PASS
N25	15	10	DFT-PI2BPS K	L	Inner_1RB_Righ t	23.76	24.12	33	PASS



Unless otherwise agreed in writing, this document is issued by the Company subject to its General Conditions of Service printed overleaf, available on request or accessible at <http://www.sgs.com/en/Terms-and-Conditions.aspx> and, for electronic format documents, subject to Terms and Conditions for Electronic Documents at <http://www.sgs.com/en/Terms-and-Conditions/Terms-e-Documents.aspx>. Attention is drawn to the limitation of liability, indemnification and jurisdiction issues defined therein. Any holder of this document is advised that information contained hereon reflects the Company's findings at the time of its intervention only and within the limits of Client's instructions, if any. The Company's sole responsibility is to its Client and this document does not exonerate parties to a transaction from exercising all their rights and obligations under the transaction documents. This document cannot be reproduced except in full, without prior written approval of the Company. Any unauthorized alteration, forgery or falsification of the content or appearance of this document is unlawful and offenders may be prosecuted to the fullest extent of the law. Unless otherwise stated the results shown in this test report refer only to the sample(s) tested and such sample(s) are retained for 30 days only.

Attention: To check the authenticity of testing/inspection report & certificate, please contact us at telephone: (86-755) 8307 1443, or email: CN.Doccheck@sgs.com

South of No. 6 Plant, No. 1, Pansheng Road, Suzhou Industrial Park, Suzhou Area, China (Jiangsu) Pilot Free Trade Zone 215000
中国·苏州·中国(江苏)自由贸易试验区苏州片区苏州工业园区海胜路1号的6号厂房南楼 邮编: 215000

t (86-512) 62992980 www.sgs.com.cn
t (86-512) 62992980 sgs.china@sgs.com



Report No.: SEWA2212000088RG02

Rev.: 01

Page: 4 of 99

N25	15	10	DFT-PI2BPS K	L	Outer_Full	22.76	23.12	33	PASS
N25	15	10	DFT-QPSK	L	Inner_1RB_Left	23.75	24.11	33	PASS
N25	15	10	DFT-QPSK	L	Inner_1RB_Righ t	23.74	24.1	33	PASS
N25	15	10	DFT-QPSK	L	Outer_Full	22.8	23.16	33	PASS
N25	15	10	DFT-16QAM	L	Inner_1RB_Left	22.34	22.7	33	PASS
N25	15	10	DFT-16QAM	L	Inner_1RB_Righ t	22.36	22.72	33	PASS
N25	15	10	DFT-16QAM	L	Outer_Full	21.75	22.11	33	PASS
N25	15	10	DFT-64QAM	L	Inner_1RB_Left	21.16	21.52	33	PASS
N25	15	10	DFT-64QAM	L	Inner_1RB_Righ t	21.22	21.58	33	PASS
N25	15	10	DFT-64QAM	L	Outer_Full	21.26	21.62	33	PASS
N25	15	10	DFT-256QAM	L	Inner_1RB_Left	19.24	19.6	33	PASS
N25	15	10	DFT-256QAM	L	Inner_1RB_Righ t	19.31	19.67	33	PASS
N25	15	10	DFT-256QAM	L	Outer_Full	19.25	19.61	33	PASS
N25	15	10	DFT-PI2BPS K	M	Inner_1RB_Left	23.98	24.34	33	PASS
N25	15	10	DFT-PI2BPS K	M	Inner_1RB_Righ t	23.96	24.32	33	PASS
N25	15	10	DFT-PI2BPS K	M	Outer_Full	22.97	23.33	33	PASS
N25	15	10	DFT-QPSK	M	Inner_1RB_Left	24	24.36	33	PASS
N25	15	10	DFT-QPSK	M	Inner_1RB_Righ t	23.97	24.33	33	PASS
N25	15	10	DFT-QPSK	M	Outer_Full	22.97	23.33	33	PASS
N25	15	10	DFT-16QAM	M	Inner_1RB_Left	22.57	22.93	33	PASS
N25	15	10	DFT-16QAM	M	Inner_1RB_Righ t	22.54	22.9	33	PASS
N25	15	10	DFT-16QAM	M	Outer_Full	21.95	22.31	33	PASS
N25	15	10	DFT-64QAM	M	Inner_1RB_Left	21.38	21.74	33	PASS
N25	15	10	DFT-64QAM	M	Inner_1RB_Righ t	21.3	21.66	33	PASS
N25	15	10	DFT-64QAM	M	Outer_Full	21.44	21.8	33	PASS
N25	15	10	DFT-256QAM	M	Inner_1RB_Left	19.45	19.81	33	PASS
N25	15	10	DFT-256QAM	M	Inner_1RB_Righ	19.4	19.76	33	PASS



Unless otherwise agreed in writing, this document is issued by the Company subject to its General Conditions of Service printed overleaf, available on request or accessible at <http://www.sgs.com/en/Terms-and-Conditions.aspx> and, for electronic format documents, subject to Terms and Conditions for Electronic Documents at <http://www.sgs.com/en/Terms-and-Conditions/Terms-e-Documents.aspx>. Attention is drawn to the limitation of liability, indemnification and jurisdiction issues defined therein. Any holder of this document is advised that information contained hereon reflects the Company's findings at the time of its intervention only and within the limits of Client's instructions, if any. The Company's sole responsibility is to its Client and this document does not exonerate parties to a transaction from exercising all their rights and obligations under the transaction documents. This document cannot be reproduced except in full, without prior written approval of the Company. Any unauthorized alteration, forgery or falsification of the content or appearance of this document is unlawful and offenders may be prosecuted to the fullest extent of the law. Unless otherwise stated the results shown in this test report refer only to the sample(s) tested and such sample(s) are retained for 30 days only.

Attention: To check the authenticity of testing/inspection report & certificate, please contact us at telephone: (86-755) 8307 1443, or email: CN.Doccheck@sgs.com

South of No. 6 Plant, No. 1, Pansheng Road, Suzhou Industrial Park, Suzhou Area, China (Jiangsu) Pilot Free Trade Zone 215000 t (86-512) 62992980 www.sgs.com.cn
 中国·苏州·中国(江苏)自由贸易试验区苏州片区苏州工业园区海胜路1号的6号厂房南楼 邮编: 215000 t (86-512) 62992980 sgs.china@sgs.com



					t				
N25	15	10	DFT-256QAM	M	Outer_Full	19.43	19.79	33	PASS
N25	15	10	DFT-PI2BPS K	H	Inner_1RB_Left	23.81	24.17	33	PASS
N25	15	10	DFT-PI2BPS K	H	Inner_1RB_Righ t	23.91	24.27	33	PASS
N25	15	10	DFT-PI2BPS K	H	Outer_Full	22.91	23.27	33	PASS
N25	15	10	DFT-QPSK	H	Inner_1RB_Left	23.84	24.2	33	PASS
N25	15	10	DFT-QPSK	H	Inner_1RB_Righ t	23.8	24.16	33	PASS
N25	15	10	DFT-QPSK	H	Outer_Full	22.95	23.31	33	PASS
N25	15	10	DFT-16QAM	H	Inner_1RB_Left	22.63	22.99	33	PASS
N25	15	10	DFT-16QAM	H	Inner_1RB_Righ t	22.57	22.93	33	PASS
N25	15	10	DFT-16QAM	H	Outer_Full	21.94	22.3	33	PASS
N25	15	10	DFT-64QAM	H	Inner_1RB_Left	21.08	21.44	33	PASS
N25	15	10	DFT-64QAM	H	Inner_1RB_Righ t	21.16	21.52	33	PASS
N25	15	10	DFT-64QAM	H	Outer_Full	21.43	21.79	33	PASS
N25	15	10	DFT-256QAM	H	Inner_1RB_Left	19.33	19.69	33	PASS
N25	15	10	DFT-256QAM	H	Inner_1RB_Righ t	19.37	19.73	33	PASS
N25	15	10	DFT-256QAM	H	Outer_Full	19.42	19.78	33	PASS
N25	15	15	DFT-PI2BPS K	L	Inner_1RB_Left	23.81	24.17	33	PASS
N25	15	15	DFT-PI2BPS K	L	Inner_1RB_Righ t	23.9	24.26	33	PASS
N25	15	15	DFT-PI2BPS K	L	Outer_Full	22.89	23.25	33	PASS
N25	15	15	DFT-QPSK	L	Inner_1RB_Left	23.82	24.18	33	PASS
N25	15	15	DFT-QPSK	L	Inner_1RB_Righ t	23.93	24.29	33	PASS
N25	15	15	DFT-QPSK	L	Outer_Full	22.88	23.24	33	PASS
N25	15	15	DFT-16QAM	L	Inner_1RB_Left	22.36	22.72	33	PASS
N25	15	15	DFT-16QAM	L	Inner_1RB_Righ t	22.4	22.76	33	PASS
N25	15	15	DFT-16QAM	L	Outer_Full	21.87	22.23	33	PASS



Unless otherwise agreed in writing, this document is issued by the Company subject to its General Conditions of Service printed overleaf, available on request or accessible at <http://www.sgs.com/en/Terms-and-Conditions.aspx> and, for electronic format documents, subject to Terms and Conditions for Electronic Documents at <http://www.sgs.com/en/Terms-and-Conditions/Terms-e-Documents.aspx>. Attention is drawn to the limitation of liability, indemnification and jurisdiction issues defined therein. Any holder of this document is advised that information contained hereon reflects the Company's findings at the time of its intervention only and within the limits of Client's instructions, if any. The Company's sole responsibility is to its Client and this document does not exonerate parties to a transaction from exercising all their rights and obligations under the transaction documents. This document cannot be reproduced except in full, without prior written approval of the Company. Any unauthorized alteration, forgery or falsification of the content or appearance of this document is unlawful and offenders may be prosecuted to the fullest extent of the law. Unless otherwise stated the results shown in this test report refer only to the sample(s) tested and such sample(s) are retained for 30 days only.

Attention: To check the authenticity of testing/inspection report & certificate, please contact us at telephone: (86-755) 8307 1443, or email: CN.Doccheck@sgs.com

South of No. 6 Plant, No. 1, Pansheng Road, Suzhou Industrial Park, Suzhou Area, China (Jiangsu) Pilot Free Trade Zone 215000 t (86-512) 62992980 www.sgs.com.cn
 中国·苏州·中国(江苏)自由贸易试验区苏州片区苏州工业园区海胜路1号的6号厂房南楼 邮编: 215000 t (86-512) 62992980 sgs.china@sgs.com



Report No.: SEWA2212000088RG02

Rev.: 01

Page: 6 of 99

N25	15	15	DFT-64QAM	L	Inner_1RB_Left	21.13	21.49	33	PASS
N25	15	15	DFT-64QAM	L	Inner_1RB_Righ t	21.23	21.59	33	PASS
N25	15	15	DFT-64QAM	L	Outer_Full	21.31	21.67	33	PASS
N25	15	15	DFT-256QAM	L	Inner_1RB_Left	19.34	19.7	33	PASS
N25	15	15	DFT-256QAM	L	Inner_1RB_Righ t	19.39	19.75	33	PASS
N25	15	15	DFT-256QAM	L	Outer_Full	19.39	19.75	33	PASS
N25	15	15	DFT-PI2BPS K	M	Inner_1RB_Left	23.91	24.27	33	PASS
N25	15	15	DFT-PI2BPS K	M	Inner_1RB_Righ t	23.89	24.25	33	PASS
N25	15	15	DFT-PI2BPS K	M	Outer_Full	23.03	23.39	33	PASS
N25	15	15	DFT-QPSK	M	Inner_1RB_Left	23.96	24.32	33	PASS
N25	15	15	DFT-QPSK	M	Inner_1RB_Righ t	23.87	24.23	33	PASS
N25	15	15	DFT-QPSK	M	Outer_Full	23	23.36	33	PASS
N25	15	15	DFT-16QAM	M	Inner_1RB_Left	22.49	22.85	33	PASS
N25	15	15	DFT-16QAM	M	Inner_1RB_Righ t	22.47	22.83	33	PASS
N25	15	15	DFT-16QAM	M	Outer_Full	22.04	22.4	33	PASS
N25	15	15	DFT-64QAM	M	Inner_1RB_Left	21.31	21.67	33	PASS
N25	15	15	DFT-64QAM	M	Inner_1RB_Righ t	21.2	21.56	33	PASS
N25	15	15	DFT-64QAM	M	Outer_Full	21.49	21.85	33	PASS
N25	15	15	DFT-256QAM	M	Inner_1RB_Left	19.44	19.8	33	PASS
N25	15	15	DFT-256QAM	M	Inner_1RB_Righ t	19.37	19.73	33	PASS
N25	15	15	DFT-256QAM	M	Outer_Full	19.5	19.86	33	PASS
N25	15	15	DFT-PI2BPS K	H	Inner_1RB_Left	23.64	24	33	PASS
N25	15	15	DFT-PI2BPS K	H	Inner_1RB_Righ t	23.77	24.13	33	PASS
N25	15	15	DFT-PI2BPS K	H	Outer_Full	22.84	23.2	33	PASS
N25	15	15	DFT-QPSK	H	Inner_1RB_Left	23.72	24.08	33	PASS
N25	15	15	DFT-QPSK	H	Inner_1RB_Righ	23.79	24.15	33	PASS



Unless otherwise agreed in writing, this document is issued by the Company subject to its General Conditions of Service printed overleaf, available on request or accessible at <http://www.sgs.com/en/Terms-and-Conditions.aspx> and, for electronic format documents, subject to Terms and Conditions for Electronic Documents at <http://www.sgs.com/en/Terms-and-Conditions/Terms-e-Documents.aspx>. Attention is drawn to the limitation of liability, indemnification and jurisdiction issues defined therein. Any holder of this document is advised that information contained hereon reflects the Company's findings at the time of its intervention only and within the limits of Client's instructions, if any. The Company's sole responsibility is to its Client and this document does not exonerate parties to a transaction from exercising all their rights and obligations under the transaction documents. This document cannot be reproduced except in full, without prior written approval of the Company. Any unauthorized alteration, forgery or falsification of the content or appearance of this document is unlawful and offenders may be prosecuted to the fullest extent of the law. Unless otherwise stated the results shown in this test report refer only to the sample(s) tested and such sample(s) are retained for 30 days only.
Attention: To check the authenticity of testing/inspection report & certificate, please contact us at telephone: (86-755) 8307 1443, or email: CN.Doccheck@sgs.com

SGS-CSTC Standards Technical Services (Suzhou) Co., Ltd.
Wireless Laboratories

South of No. 6 Plant, No. 1, Pansheng Road, Suzhou Industrial Park, Suzhou Area, China (Jiangsu) Pilot Free Trade Zone 215000
中国·苏州·中国(江苏)自由贸易试验区苏州片区苏州工业园区海胜路1号的6号厂房南楼 邮编: 215000

t (86-512) 62992980 www.sgs.com.cn
t (86-512) 62992980 sgs.china@sgs.com



Report No.: SEWA2212000088RG02

Rev.: 01

Page: 7 of 99

					t				
N25	15	15	DFT-QPSK	H	Outer_Full	22.86	23.22	33	PASS
N25	15	15	DFT-16QAM	H	Inner_1RB_Left	22.25	22.61	33	PASS
N25	15	15	DFT-16QAM	H	Inner_1RB_Righ t	22.35	22.71	33	PASS
N25	15	15	DFT-16QAM	H	Outer_Full	21.87	22.23	33	PASS
N25	15	15	DFT-64QAM	H	Inner_1RB_Left	21.09	21.45	33	PASS
N25	15	15	DFT-64QAM	H	Inner_1RB_Righ t	21.18	21.54	33	PASS
N25	15	15	DFT-64QAM	H	Outer_Full	21.31	21.67	33	PASS
N25	15	15	DFT-256QAM	H	Inner_1RB_Left	19.28	19.64	33	PASS
N25	15	15	DFT-256QAM	H	Inner_1RB_Righ t	19.26	19.62	33	PASS
N25	15	15	DFT-256QAM	H	Outer_Full	19.32	19.68	33	PASS
N25	15	20	DFT-PI2BPS K	L	Inner_1RB_Left	23.9	24.26	33	PASS
N25	15	20	DFT-PI2BPS K	L	Inner_1RB_Righ t	23.89	24.25	33	PASS
N25	15	20	DFT-PI2BPS K	L	Outer_Full	22.93	23.29	33	PASS
N25	15	20	DFT-QPSK	L	Inner_1RB_Left	23.91	24.27	33	PASS
N25	15	20	DFT-QPSK	L	Inner_1RB_Righ t	23.9	24.26	33	PASS
N25	15	20	DFT-QPSK	L	Outer_Full	22.96	23.32	33	PASS
N25	15	20	DFT-16QAM	L	Inner_1RB_Left	22.49	22.85	33	PASS
N25	15	20	DFT-16QAM	L	Inner_1RB_Righ t	22.48	22.84	33	PASS
N25	15	20	DFT-16QAM	L	Outer_Full	21.94	22.3	33	PASS
N25	15	20	DFT-64QAM	L	Inner_1RB_Left	21.25	21.61	33	PASS
N25	15	20	DFT-64QAM	L	Inner_1RB_Righ t	21.21	21.57	33	PASS
N25	15	20	DFT-64QAM	L	Outer_Full	21.45	21.81	33	PASS
N25	15	20	DFT-256QAM	L	Inner_1RB_Left	19.41	19.77	33	PASS
N25	15	20	DFT-256QAM	L	Inner_1RB_Righ t	19.41	19.77	33	PASS
N25	15	20	DFT-256QAM	L	Outer_Full	19.45	19.81	33	PASS
N25	15	20	DFT-PI2BPS K	M	Inner_1RB_Left	23.94	24.3	33	PASS



Unless otherwise agreed in writing, this document is issued by the Company subject to its General Conditions of Service printed overleaf, available on request or accessible at <http://www.sgs.com/en/Terms-and-Conditions.aspx> and, for electronic format documents, subject to Terms and Conditions for Electronic Documents at <http://www.sgs.com/en/Terms-and-Conditions/Terms-e-Documents.aspx>. Attention is drawn to the limitation of liability, indemnification and jurisdiction issues defined therein. Any holder of this document is advised that information contained hereon reflects the Company's findings at the time of its intervention only and within the limits of Client's instructions, if any. The Company's sole responsibility is to its Client and this document does not exonerate parties to a transaction from exercising all their rights and obligations under the transaction documents. This document cannot be reproduced except in full, without prior written approval of the Company. Any unauthorized alteration, forgery or falsification of the content or appearance of this document is unlawful and offenders may be prosecuted to the fullest extent of the law. Unless otherwise stated the results shown in this test report refer only to the sample(s) tested and such sample(s) are retained for 30 days only.

Attention: To check the authenticity of testing/inspection report & certificate, please contact us at telephone: (86-755) 8307 1443, or email: CN.Doccheck@sgs.com

South of No. 6 Plant, No. 1, Pansheng Road, Suzhou Industrial Park, Suzhou Area, China (Jiangsu) Pilot Free Trade Zone 215000
中国·苏州·中国(江苏)自由贸易试验区苏州片区苏州工业园区海胜路1号的6号厂房南楼 邮编: 215000

t (86-512) 62992980 www.sgs.com.cn
t (86-512) 62992980 sgs.china@sgs.com



Report No.: SEWA2212000088RG02

Rev.: 01

Page: 8 of 99

N25	15	20	DFT-PI2BPS K	M	Inner_1RB_Righ t	23.78	24.14	33	PASS
N25	15	20	DFT-PI2BPS K	M	Outer_Full	23.01	23.37	33	PASS
N25	15	20	DFT-QPSK	M	Inner_1RB_Left	24.01	24.37	33	PASS
N25	15	20	DFT-QPSK	M	Inner_1RB_Righ t	23.86	24.22	33	PASS
N25	15	20	DFT-QPSK	M	Outer_Full	22.99	23.35	33	PASS
N25	15	20	DFT-16QAM	M	Inner_1RB_Left	22.57	22.93	33	PASS
N25	15	20	DFT-16QAM	M	Inner_1RB_Righ t	22.37	22.73	33	PASS
N25	15	20	DFT-16QAM	M	Outer_Full	22.02	22.38	33	PASS
N25	15	20	DFT-64QAM	M	Inner_1RB_Left	21.31	21.67	33	PASS
N25	15	20	DFT-64QAM	M	Inner_1RB_Righ t	21.12	21.48	33	PASS
N25	15	20	DFT-64QAM	M	Outer_Full	21.53	21.89	33	PASS
N25	15	20	DFT-256QAM	M	Inner_1RB_Left	19.49	19.85	33	PASS
N25	15	20	DFT-256QAM	M	Inner_1RB_Righ t	19.36	19.72	33	PASS
N25	15	20	DFT-256QAM	M	Outer_Full	19.49	19.85	33	PASS
N25	15	20	DFT-PI2BPS K	H	Inner_1RB_Left	23.75	24.11	33	PASS
N25	15	20	DFT-PI2BPS K	H	Inner_1RB_Righ t	23.72	24.08	33	PASS
N25	15	20	DFT-PI2BPS K	H	Outer_Full	22.86	23.22	33	PASS
N25	15	20	DFT-QPSK	H	Inner_1RB_Left	23.78	24.14	33	PASS
N25	15	20	DFT-QPSK	H	Inner_1RB_Righ t	23.72	24.08	33	PASS
N25	15	20	DFT-QPSK	H	Outer_Full	22.86	23.22	33	PASS
N25	15	20	DFT-16QAM	H	Inner_1RB_Left	22.29	22.65	33	PASS
N25	15	20	DFT-16QAM	H	Inner_1RB_Righ t	22.3	22.66	33	PASS
N25	15	20	DFT-16QAM	H	Outer_Full	21.88	22.24	33	PASS
N25	15	20	DFT-64QAM	H	Inner_1RB_Left	21.11	21.47	33	PASS
N25	15	20	DFT-64QAM	H	Inner_1RB_Righ t	21.07	21.43	33	PASS
N25	15	20	DFT-64QAM	H	Outer_Full	21.33	21.69	33	PASS



Unless otherwise agreed in writing, this document is issued by the Company subject to its General Conditions of Service printed overleaf, available on request or accessible at <http://www.sgs.com/en/Terms-and-Conditions.aspx> and, for electronic format documents, subject to Terms and Conditions for Electronic Documents at <http://www.sgs.com/en/Terms-and-Conditions/Terms-e-Documents.aspx>. Attention is drawn to the limitation of liability, indemnification and jurisdiction issues defined therein. Any holder of this document is advised that information contained hereon reflects the Company's findings at the time of its intervention only and within the limits of Client's instructions, if any. The Company's sole responsibility is to its Client and this document does not exonerate parties to a transaction from exercising all their rights and obligations under the transaction documents. This document cannot be reproduced except in full, without prior written approval of the Company. Any unauthorized alteration, forgery or falsification of the content or appearance of this document is unlawful and offenders may be prosecuted to the fullest extent of the law. Unless otherwise stated the results shown in this test report refer only to the sample(s) tested and such sample(s) are retained for 30 days only.

Attention: To check the authenticity of testing/inspection report & certificate, please contact us at telephone: (86-755) 8307 1443, or email: CN.Doccheck@sgs.com

South of No. 6 Plant, No. 1, Pansheng Road, Suzhou Industrial Park, Suzhou Area, China (Jiangsu) Pilot Free Trade Zone 215000 t (86-512) 62992980 www.sgs.com.cn
 中国·苏州·中国(江苏)自由贸易试验区苏州片区苏州工业园区海胜路1号的6号厂房南楼 邮编: 215000 t (86-512) 62992980 sgs.china@sgs.com



Report No.: SEWA2212000088RG02

Rev.: 01

Page: 9 of 99

N25	15	20	DFT-256QAM	H	Inner_1RB_Left	19.27	19.63	33	PASS
N25	15	20	DFT-256QAM	H	Inner_1RB_Righ t	19.2	19.56	33	PASS
N25	15	20	DFT-256QAM	H	Outer_Full	19.34	19.7	33	PASS
N25	15	25	DFT-PI2BPS K	L	Inner_1RB_Left	24.02	24.38	33	PASS
N25	15	25	DFT-PI2BPS K	L	Inner_1RB_Righ t	24.19	24.55	33	PASS
N25	15	25	DFT-PI2BPS K	L	Outer_Full	23.01	23.37	33	PASS
N25	15	25	DFT-QPSK	L	Inner_1RB_Left	24.03	24.39	33	PASS
N25	15	25	DFT-QPSK	L	Inner_1RB_Righ t	24.21	24.57	33	PASS
N25	15	25	DFT-QPSK	L	Outer_Full	22.99	23.35	33	PASS
N25	15	25	DFT-16QAM	L	Inner_1RB_Left	22.62	22.98	33	PASS
N25	15	25	DFT-16QAM	L	Inner_1RB_Righ t	22.79	23.15	33	PASS
N25	15	25	DFT-16QAM	L	Outer_Full	22.01	22.37	33	PASS
N25	15	25	DFT-64QAM	L	Inner_1RB_Left	21.4	21.76	33	PASS
N25	15	25	DFT-64QAM	L	Inner_1RB_Righ t	21.56	21.92	33	PASS
N25	15	25	DFT-64QAM	L	Outer_Full	21.46	21.82	33	PASS
N25	15	25	DFT-256QAM	L	Inner_1RB_Left	19.54	19.9	33	PASS
N25	15	25	DFT-256QAM	L	Inner_1RB_Righ t	19.73	20.09	33	PASS
N25	15	25	DFT-256QAM	L	Outer_Full	19.45	19.81	33	PASS
N25	15	25	DFT-PI2BPS K	M	Inner_1RB_Left	24.04	24.4	33	PASS
N25	15	25	DFT-PI2BPS K	M	Inner_1RB_Righ t	24.16	24.52	33	PASS
N25	15	25	DFT-PI2BPS K	M	Outer_Full	23.04	23.4	33	PASS
N25	15	25	DFT-QPSK	M	Inner_1RB_Left	24.05	24.41	33	PASS
N25	15	25	DFT-QPSK	M	Inner_1RB_Righ t	24.2	24.56	33	PASS
N25	15	25	DFT-QPSK	M	Outer_Full	23.06	23.42	33	PASS
N25	15	25	DFT-16QAM	M	Inner_1RB_Left	22.63	22.99	33	PASS
N25	15	25	DFT-16QAM	M	Inner_1RB_Righ	22.7	23.06	33	PASS



Unless otherwise agreed in writing, this document is issued by the Company subject to its General Conditions of Service printed overleaf, available on request or accessible at <http://www.sgs.com/en/Terms-and-Conditions.aspx> and, for electronic format documents, subject to Terms and Conditions for Electronic Documents at <http://www.sgs.com/en/Terms-and-Conditions/Terms-e-Documents.aspx>. Attention is drawn to the limitation of liability, indemnification and jurisdiction issues defined therein. Any holder of this document is advised that information contained hereon reflects the Company's findings at the time of its intervention only and within the limits of Client's instructions, if any. The Company's sole responsibility is to its Client and this document does not exonerate parties to a transaction from exercising all their rights and obligations under the transaction documents. This document cannot be reproduced except in full, without prior written approval of the Company. Any unauthorized alteration, forgery or falsification of the content or appearance of this document is unlawful and offenders may be prosecuted to the fullest extent of the law. Unless otherwise stated the results shown in this test report refer only to the sample(s) tested and such sample(s) are retained for 30 days only.

Attention: To check the authenticity of testing/inspection report & certificate, please contact us at telephone: (86-755) 8307 1443, or email: CN.Doccheck@sgs.com

South of No. 6 Plant, No. 1, Pansheng Road, Suzhou Industrial Park, Suzhou Area, China (Jiangsu) Pilot Free Trade Zone 215000 t (86-512) 62992980 www.sgs.com.cn
 中国·苏州·中国(江苏)自由贸易试验区苏州片区苏州工业园区海胜路1号的6号厂房南楼 邮编: 215000 t (86-512) 62992980 sgs.china@sgs.com



					t				
N25	15	25	DFT-16QAM	M	Outer_Full	22	22.36	33	PASS
N25	15	25	DFT-64QAM	M	Inner_1RB_Left	21.43	21.79	33	PASS
N25	15	25	DFT-64QAM	M	Inner_1RB_Righ t	21.51	21.87	33	PASS
N25	15	25	DFT-64QAM	M	Outer_Full	21.51	21.87	33	PASS
N25	15	25	DFT-256QAM	M	Inner_1RB_Left	19.57	19.93	33	PASS
N25	15	25	DFT-256QAM	M	Inner_1RB_Righ t	19.68	20.04	33	PASS
N25	15	25	DFT-256QAM	M	Outer_Full	19.52	19.88	33	PASS
N25	15	25	DFT-PI2BPS K	H	Inner_1RB_Left	23.99	24.35	33	PASS
N25	15	25	DFT-PI2BPS K	H	Inner_1RB_Righ t	24	24.36	33	PASS
N25	15	25	DFT-PI2BPS K	H	Outer_Full	22.91	23.27	33	PASS
N25	15	25	DFT-QPSK	H	Inner_1RB_Left	23.99	24.35	33	PASS
N25	15	25	DFT-QPSK	H	Inner_1RB_Righ t	20.92	21.28	33	PASS
N25	15	25	DFT-QPSK	H	Outer_Full	22.89	23.25	33	PASS
N25	15	25	DFT-16QAM	H	Inner_1RB_Left	22.58	22.94	33	PASS
N25	15	25	DFT-16QAM	H	Inner_1RB_Righ t	22.61	22.97	33	PASS
N25	15	25	DFT-16QAM	H	Outer_Full	21.9	22.26	33	PASS
N25	15	25	DFT-64QAM	H	Inner_1RB_Left	21.36	21.72	33	PASS
N25	15	25	DFT-64QAM	H	Inner_1RB_Righ t	21.37	21.73	33	PASS
N25	15	25	DFT-64QAM	H	Outer_Full	21.36	21.72	33	PASS
N25	15	25	DFT-256QAM	H	Inner_1RB_Left	19.44	19.8	33	PASS
N25	15	25	DFT-256QAM	H	Inner_1RB_Righ t	19.57	19.93	33	PASS
N25	15	25	DFT-256QAM	H	Outer_Full	19.36	19.72	33	PASS
N25	15	30	DFT-PI2BPS K	L	Inner_1RB_Left	23.99	24.35	33	PASS
N25	15	30	DFT-PI2BPS K	L	Inner_1RB_Righ t	24.15	24.51	33	PASS
N25	15	30	DFT-PI2BPS K	L	Outer_Full	23.06	23.42	33	PASS



Unless otherwise agreed in writing, this document is issued by the Company subject to its General Conditions of Service printed overleaf, available on request or accessible at <http://www.sgs.com/en/Terms-and-Conditions.aspx> and, for electronic format documents, subject to Terms and Conditions for Electronic Documents at <http://www.sgs.com/en/Terms-and-Conditions/Terms-e-Documents.aspx>. Attention is drawn to the limitation of liability, indemnification and jurisdiction issues defined therein. Any holder of this document is advised that information contained hereon reflects the Company's findings at the time of its intervention only and within the limits of Client's instructions, if any. The Company's sole responsibility is to its Client and this document does not exonerate parties to a transaction from exercising all their rights and obligations under the transaction documents. This document cannot be reproduced except in full, without prior written approval of the Company. Any unauthorized alteration, forgery or falsification of the content or appearance of this document is unlawful and offenders may be prosecuted to the fullest extent of the law. Unless otherwise stated the results shown in this test report refer only to the sample(s) tested and such sample(s) are retained for 30 days only.

Attention: To check the authenticity of testing/inspection report & certificate, please contact us at telephone: (86-755) 8307 1443, or email: CN.Doccheck@sgs.com

South of No. 6 Plant, No. 1, Pansheng Road, Suzhou Industrial Park, Suzhou Area, China (Jiangsu) Pilot Free Trade Zone 215000
中国·苏州·中国(江苏)自由贸易试验区苏州片区苏州工业园区海胜路1号的6号厂房南楼 邮编: 215000

t (86-512) 62992980 www.sgs.com.cn
t (86-512) 62992980 sgs.china@sgs.com



N25	15	30	DFT-QPSK	L	Inner_1RB_Left	23.97	24.33	33	PASS
N25	15	30	DFT-QPSK	L	Inner_1RB_Righ t	24.12	24.48	33	PASS
N25	15	30	DFT-QPSK	L	Outer_Full	23.01	23.37	33	PASS
N25	15	30	DFT-16QAM	L	Inner_1RB_Left	22.53	22.89	33	PASS
N25	15	30	DFT-16QAM	L	Inner_1RB_Righ t	22.73	23.09	33	PASS
N25	15	30	DFT-16QAM	L	Outer_Full	22.03	22.39	33	PASS
N25	15	30	DFT-64QAM	L	Inner_1RB_Left	21.34	21.7	33	PASS
N25	15	30	DFT-64QAM	L	Inner_1RB_Righ t	21.52	21.88	33	PASS
N25	15	30	DFT-64QAM	L	Outer_Full	21.5	21.86	33	PASS
N25	15	30	DFT-256QAM	L	Inner_1RB_Left	19.54	19.9	33	PASS
N25	15	30	DFT-256QAM	L	Inner_1RB_Righ t	19.71	20.07	33	PASS
N25	15	30	DFT-256QAM	L	Outer_Full	19.51	19.87	33	PASS
N25	15	30	DFT-PI2BPS K	M	Inner_1RB_Left	23.98	24.34	33	PASS
N25	15	30	DFT-PI2BPS K	M	Inner_1RB_Righ t	24.15	24.51	33	PASS
N25	15	30	DFT-PI2BPS K	M	Outer_Full	23.1	23.46	33	PASS
N25	15	30	DFT-QPSK	M	Inner_1RB_Left	23.98	24.34	33	PASS
N25	15	30	DFT-QPSK	M	Inner_1RB_Righ t	24.14	24.5	33	PASS
N25	15	30	DFT-QPSK	M	Outer_Full	23.07	23.43	33	PASS
N25	15	30	DFT-16QAM	M	Inner_1RB_Left	22.53	22.89	33	PASS
N25	15	30	DFT-16QAM	M	Inner_1RB_Righ t	22.72	23.08	33	PASS
N25	15	30	DFT-16QAM	M	Outer_Full	22.11	22.47	33	PASS
N25	15	30	DFT-64QAM	M	Inner_1RB_Left	21.36	21.72	33	PASS
N25	15	30	DFT-64QAM	M	Inner_1RB_Righ t	21.52	21.88	33	PASS
N25	15	30	DFT-64QAM	M	Outer_Full	21.56	21.92	33	PASS
N25	15	30	DFT-256QAM	M	Inner_1RB_Left	19.47	19.83	33	PASS
N25	15	30	DFT-256QAM	M	Inner_1RB_Righ t	19.68	20.04	33	PASS
N25	15	30	DFT-256QAM	M	Outer_Full	19.57	19.93	33	PASS



Unless otherwise agreed in writing, this document is issued by the Company subject to its General Conditions of Service printed overleaf, available on request or accessible at <http://www.sgs.com/en/Terms-and-Conditions.aspx> and, for electronic format documents, subject to Terms and Conditions for Electronic Documents at <http://www.sgs.com/en/Terms-and-Conditions/Terms-e-Documents.aspx>. Attention is drawn to the limitation of liability, indemnification and jurisdiction issues defined therein. Any holder of this document is advised that information contained hereon reflects the Company's findings at the time of its intervention only and within the limits of Client's instructions, if any. The Company's sole responsibility is to its Client and this document does not exonerate parties to a transaction from exercising all their rights and obligations under the transaction documents. This document cannot be reproduced except in full, without prior written approval of the Company. Any unauthorized alteration, forgery or falsification of the content or appearance of this document is unlawful and offenders may be prosecuted to the fullest extent of the law. Unless otherwise stated the results shown in this test report refer only to the sample(s) tested and such sample(s) are retained for 30 days only.

Attention: To check the authenticity of testing/inspection report & certificate, please contact us at telephone: (86-755) 8307 1443, or email: CN.Doccheck@sgs.com

South of No. 6 Plant, No. 1, Pansheng Road, Suzhou Industrial Park, Suzhou Area, China (Jiangsu) Pilot Free Trade Zone 215000
中国·苏州·中国(江苏)自由贸易试验区苏州片区苏州工业园区海胜路1号的6号厂房南楼 邮编: 215000

t (86-512) 62992980 www.sgs.com.cn
t (86-512) 62992980 sgs.china@sgs.com



N25	15	30	DFT-PI2BPS K	H	Inner_1RB_Left	23.85	24.21	33	PASS
N25	15	30	DFT-PI2BPS K	H	Inner_1RB_Righ t	23.98	24.34	33	PASS
N25	15	30	DFT-PI2BPS K	H	Outer_Full	22.94	23.3	33	PASS
N25	15	30	DFT-QPSK	H	Inner_1RB_Left	23.9	24.26	33	PASS
N25	15	30	DFT-QPSK	H	Inner_1RB_Righ t	24	24.36	33	PASS
N25	15	30	DFT-QPSK	H	Outer_Full	22.94	23.3	33	PASS
N25	15	30	DFT-16QAM	H	Inner_1RB_Left	22.43	22.79	33	PASS
N25	15	30	DFT-16QAM	H	Inner_1RB_Righ t	22.56	22.92	33	PASS
N25	15	30	DFT-16QAM	H	Outer_Full	21.96	22.32	33	PASS
N25	15	30	DFT-64QAM	H	Inner_1RB_Left	21.22	21.58	33	PASS
N25	15	30	DFT-64QAM	H	Inner_1RB_Righ t	21.32	21.68	33	PASS
N25	15	30	DFT-64QAM	H	Outer_Full	21.41	21.77	33	PASS
N25	15	30	DFT-256QAM	H	Inner_1RB_Left	19.34	19.7	33	PASS
N25	15	30	DFT-256QAM	H	Inner_1RB_Righ t	19.51	19.87	33	PASS
N25	15	30	DFT-256QAM	H	Outer_Full	19.46	19.82	33	PASS
N25	15	40	DFT-PI2BPS K	L	Inner_1RB_Left	24.09	24.45	33	PASS
N25	15	40	DFT-PI2BPS K	L	Inner_1RB_Righ t	24.26	24.62	33	PASS
N25	15	40	DFT-PI2BPS K	L	Outer_Full	23.04	23.4	33	PASS
N25	15	40	DFT-QPSK	L	Inner_1RB_Left	24.18	24.54	33	PASS
N25	15	40	DFT-QPSK	L	Inner_1RB_Righ t	24.33	24.69	33	PASS
N25	15	40	DFT-QPSK	L	Outer_Full	23.06	23.42	33	PASS
N25	15	40	DFT-16QAM	L	Inner_1RB_Left	22.89	23.25	33	PASS
N25	15	40	DFT-16QAM	L	Inner_1RB_Righ t	22.75	23.11	33	PASS
N25	15	40	DFT-16QAM	L	Outer_Full	22	22.36	33	PASS
N25	15	40	DFT-64QAM	L	Inner_1RB_Left	21.27	21.63	33	PASS
N25	15	40	DFT-64QAM	L	Inner_1RB_Righ	21.51	21.87	33	PASS



Unless otherwise agreed in writing, this document is issued by the Company subject to its General Conditions of Service printed overleaf, available on request or accessible at <http://www.sgs.com/en/Terms-and-Conditions.aspx> and, for electronic format documents, subject to Terms and Conditions for Electronic Documents at <http://www.sgs.com/en/Terms-and-Conditions/Terms-e-Documents.aspx>. Attention is drawn to the limitation of liability, indemnification and jurisdiction issues defined therein. Any holder of this document is advised that information contained hereon reflects the Company's findings at the time of its intervention only and within the limits of Client's instructions, if any. The Company's sole responsibility is to its Client and this document does not exonerate parties to a transaction from exercising all their rights and obligations under the transaction documents. This document cannot be reproduced except in full, without prior written approval of the Company. Any unauthorized alteration, forgery or falsification of the content or appearance of this document is unlawful and offenders may be prosecuted to the fullest extent of the law. Unless otherwise stated the results shown in this test report refer only to the sample(s) tested and such sample(s) are retained for 30 days only.

Attention: To check the authenticity of testing/inspection report & certificate, please contact us at telephone: (86-755) 8307 1443, or email: CN.Doccheck@sgs.com

South of No. 6 Plant, No. 1, Pansheng Road, Suzhou Industrial Park, Suzhou Area, China (Jiangsu) Pilot Free Trade Zone 215000 t (86-512) 62992980 www.sgs.com.cn
 中国·苏州·中国(江苏)自由贸易试验区苏州片区苏州工业园区海胜路1号的6号厂房南楼 邮编: 215000 t (86-512) 62992980 sgs.china@sgs.com



Report No.: SEWA2212000088RG02

Rev.: 01

Page: 13 of 99

					t				
N25	15	40	DFT-64QAM	L	Outer_Full	21.5	21.86	33	PASS
N25	15	40	DFT-256QAM	L	Inner_1RB_Left	19.67	20.03	33	PASS
N25	15	40	DFT-256QAM	L	Inner_1RB_Righ t	19.85	20.21	33	PASS
N25	15	40	DFT-256QAM	L	Outer_Full	19.5	19.86	33	PASS
N25	15	40	DFT-PI2BPS K	M	Inner_1RB_Left	24.09	24.45	33	PASS
N25	15	40	DFT-PI2BPS K	M	Inner_1RB_Righ t	24.22	24.58	33	PASS
N25	15	40	DFT-PI2BPS K	M	Outer_Full	23.08	23.44	33	PASS
N25	15	40	DFT-QPSK	M	Inner_1RB_Left	24.08	24.44	33	PASS
N25	15	40	DFT-QPSK	M	Inner_1RB_Righ t	24.27	24.63	33	PASS
N25	15	40	DFT-QPSK	M	Outer_Full	23.06	23.42	33	PASS
N25	15	40	DFT-16QAM	M	Inner_1RB_Left	22.63	22.99	33	PASS
N25	15	40	DFT-16QAM	M	Inner_1RB_Righ t	22.79	23.15	33	PASS
N25	15	40	DFT-16QAM	M	Outer_Full	22.07	22.43	33	PASS
N25	15	40	DFT-64QAM	M	Inner_1RB_Left	21.46	21.82	33	PASS
N25	15	40	DFT-64QAM	M	Inner_1RB_Righ t	21.56	21.92	33	PASS
N25	15	40	DFT-64QAM	M	Outer_Full	21.54	21.9	33	PASS
N25	15	40	DFT-256QAM	M	Inner_1RB_Left	19.59	19.95	33	PASS
N25	15	40	DFT-256QAM	M	Inner_1RB_Righ t	19.79	20.15	33	PASS
N25	15	40	DFT-256QAM	M	Outer_Full	19.56	19.92	33	PASS
N25	15	40	DFT-PI2BPS K	H	Inner_1RB_Left	24.12	24.48	33	PASS
N25	15	40	DFT-PI2BPS K	H	Inner_1RB_Righ t	24.13	24.49	33	PASS
N25	15	40	DFT-PI2BPS K	H	Outer_Full	23.04	23.4	33	PASS
N25	15	40	DFT-QPSK	H	Inner_1RB_Left	24.1	24.46	33	PASS
N25	15	40	DFT-QPSK	H	Inner_1RB_Righ t	24.17	24.53	33	PASS
N25	15	40	DFT-QPSK	H	Outer_Full	23.06	23.42	33	PASS



Unless otherwise agreed in writing, this document is issued by the Company subject to its General Conditions of Service printed overleaf, available on request or accessible at <http://www.sgs.com/en/Terms-and-Conditions.aspx> and, for electronic format documents, subject to Terms and Conditions for Electronic Documents at <http://www.sgs.com/en/Terms-and-Conditions/Terms-e-Documents.aspx>. Attention is drawn to the limitation of liability, indemnification and jurisdiction issues defined therein. Any holder of this document is advised that information contained hereon reflects the Company's findings at the time of its intervention only and within the limits of Client's instructions, if any. The Company's sole responsibility is to its Client and this document does not exonerate parties to a transaction from exercising all their rights and obligations under the transaction documents. This document cannot be reproduced except in full, without prior written approval of the Company. Any unauthorized alteration, forgery or falsification of the content or appearance of this document is unlawful and offenders may be prosecuted to the fullest extent of the law. Unless otherwise stated the results shown in this test report refer only to the sample(s) tested and such sample(s) are retained for 30 days only.
Attention: To check the authenticity of testing/inspection report & certificate, please contact us at telephone: (86-755) 8307 1443, or email: CN.Doccheck@sgs.com
 South of No. 6 Plant, No. 1, Pansheng Road, Suzhou Industrial Park, Suzhou Area, China (Jiangsu) Pilot Free Trade Zone 215000 t (86-512) 62992980 www.sgs.com.cn
 中国·苏州·中国(江苏)自由贸易试验区苏州片区苏州工业园区海胜路1号的6号厂房南楼 邮编: 215000 t (86-512) 62992980 sgs.china@sgs.com



Report No.: SEWA2212000088RG02

Rev.: 01

Page: 14 of 99

N25	15	40	DFT-16QAM	H	Inner_1RB_Left	22.65	23.01	33	PASS
N25	15	40	DFT-16QAM	H	Inner_1RB_Right	22.71	23.07	33	PASS
N25	15	40	DFT-16QAM	H	Outer_Full	22.02	22.38	33	PASS
N25	15	40	DFT-64QAM	H	Inner_1RB_Left	21.41	21.77	33	PASS
N25	15	40	DFT-64QAM	H	Inner_1RB_Right	21.43	21.79	33	PASS
N25	15	40	DFT-64QAM	H	Outer_Full	21.52	21.88	33	PASS
N25	15	40	DFT-256QAM	H	Inner_1RB_Left	19.64	20	33	PASS
N25	15	40	DFT-256QAM	H	Inner_1RB_Right	19.8	20.16	33	PASS
N25	15	40	DFT-256QAM	H	Outer_Full	19.5	19.86	33	PASS



Unless otherwise agreed in writing, this document is issued by the Company subject to its General Conditions of Service printed overleaf, available on request or accessible at <http://www.sgs.com/en/Terms-and-Conditions.aspx> and, for electronic format documents, subject to Terms and Conditions for Electronic Documents at <http://www.sgs.com/en/Terms-and-Conditions/Terms-e-Documents.aspx>. Attention is drawn to the limitation of liability, indemnification and jurisdiction issues defined therein. Any holder of this document is advised that information contained hereon reflects the Company's findings at the time of its intervention only and within the limits of Client's instructions, if any. The Company's sole responsibility is to its Client and this document does not exonerate parties to a transaction from exercising all their rights and obligations under the transaction documents. This document cannot be reproduced except in full, without prior written approval of the Company. Any unauthorized alteration, forgery or falsification of the content or appearance of this document is unlawful and offenders may be prosecuted to the fullest extent of the law. Unless otherwise stated the results shown in this test report refer only to the sample(s) tested and such sample(s) are retained for 30 days only.

Attention: To check the authenticity of testing/inspection report & certificate, please contact us at telephone: (86-755) 8307 1443, or email: CN.Doccheck@sgs.com

South of No. 6 Plant, No. 1, Runsheng Road, Suzhou Industrial Park, Suzhou Area, China (Jiangsu) Pilot Free Trade Zone 215000
 中国·苏州·中国(江苏)自由贸易试验区苏州片区苏州工业园区润胜路1号的6号厂房南楼 邮编: 215000

t (86-512) 62992980 www.sgs.com.cn
 t (86-512) 62992980 sgs.china@sgs.com



Report No.: SEWA2212000088RG02
Rev.: 01
Page: 15 of 99

Peak-to-Average Ratio for SA

Peak-to-Average Ratio(PAPR)

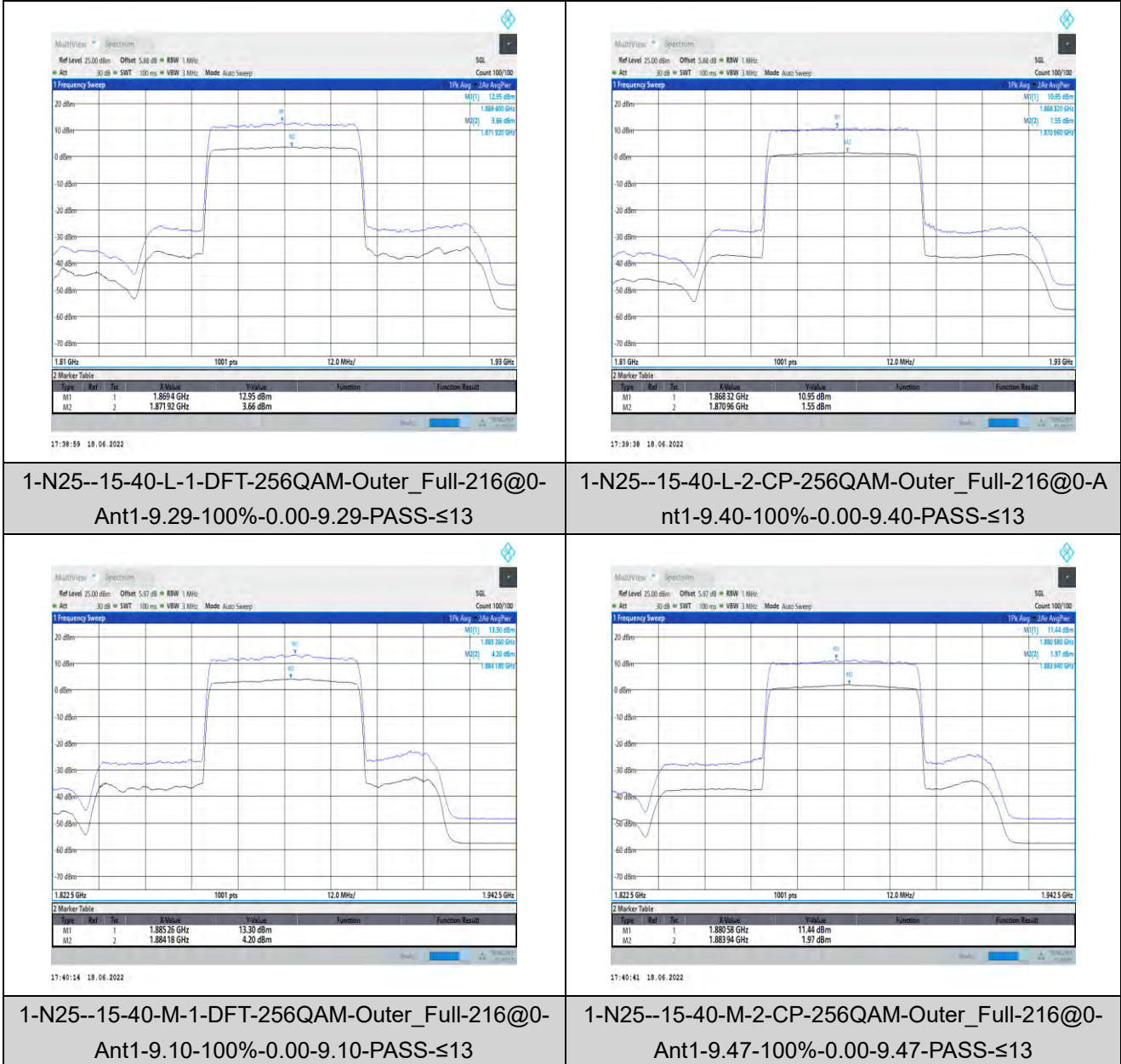
Test Result

Table with 11 columns: Band, SCS, Bandwidth, Modulation, Channel, RB Config, DutyCycle, Factor, Result, Limit, Verdict. It contains 6 rows of test data for N25 band with various modulations and channels, all showing PASS results.



Unless otherwise agreed in writing, this document is issued by the Company subject to its General Conditions of Service printed overleaf... Attention: To check the authenticity of testing/inspection report & certificate, please contact us at telephone: (86-755) 8307 1443, or email: CN.Doccheck@sgs.com

Test Graphs



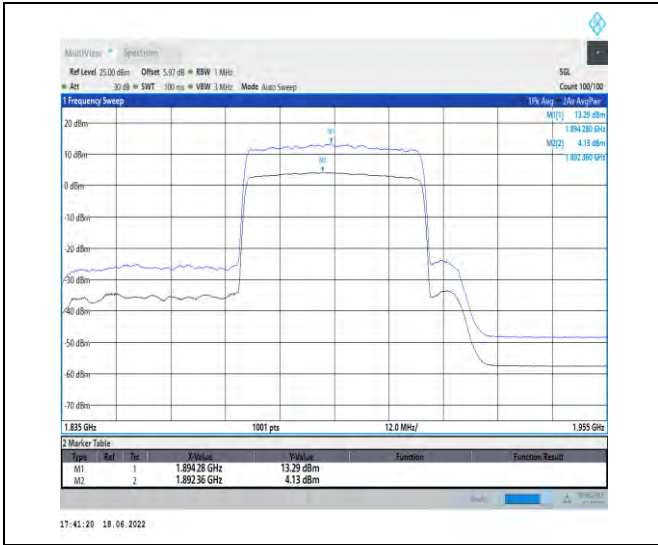
1-N25--15-40-L-1-DFT-256QAM-Outer_Full-216@0-Ant1-9.29-100%-0.00-9.29-PASS-≤13

1-N25--15-40-L-2-CP-256QAM-Outer_Full-216@0-Ant1-9.40-100%-0.00-9.40-PASS-≤13

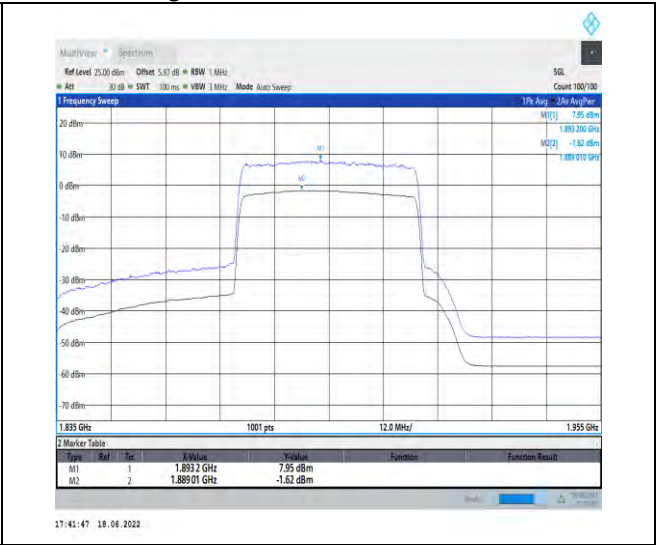
1-N25--15-40-M-1-DFT-256QAM-Outer_Full-216@0-Ant1-9.10-100%-0.00-9.10-PASS-≤13

1-N25--15-40-M-2-CP-256QAM-Outer_Full-216@0-Ant1-9.47-100%-0.00-9.47-PASS-≤13





1-N25--15-40-H-1-DFT-256QAM-Outer_Full-216@0-Ant1-9.16-100%-0.00-9.16-PASS-≤13



1-N25--15-40-H-2-CP-256QAM-Outer_Full-216@0-Ant1-9.57-100%-0.00-9.57-PASS-≤13



Unless otherwise agreed in writing, this document is issued by the Company subject to its General Conditions of Service printed overleaf, available on request or accessible at <http://www.sgs.com/en/Terms-and-Conditions.aspx> and, for electronic format documents, subject to Terms and Conditions for Electronic Documents at <http://www.sgs.com/en/Terms-and-Conditions/Terms-e-Documents.aspx>. Attention is drawn to the limitation of liability, indemnification and jurisdiction issues defined therein. Any holder of this document is advised that information contained hereon reflects the Company's findings at the time of its intervention only and within the limits of Client's instructions, if any. The Company's sole responsibility is to its Client and this document does not exonerate parties to a transaction from exercising all their rights and obligations under the transaction documents. This document cannot be reproduced except in full, without prior written approval of the Company. Any unauthorized alteration, forgery or falsification of the content or appearance of this document is unlawful and offenders may be prosecuted to the fullest extent of the law. Unless otherwise stated the results shown in this test report refer only to the sample(s) tested and such sample(s) are retained for 30 days only.

Attention: To check the authenticity of testing/inspection report & certificate, please contact us at telephone: (86-755) 8307 1443, or email: CN.Doccheck@sgs.com

South of No. 6 Plant, No. 1, Runsheng Road, Suzhou Industrial Park, Suzhou Area, China (Jiangsu) Pilot Free Trade Zone 215000 t (86-512) 62992980 www.sgs.com.cn
 中国·苏州·中国(江苏)自由贸易试验区苏州片区苏州工业园区润胜路1号的6号厂房南楼 邮编: 215000 t (86-512) 62992980 sgs.china@sgs.com



Report No.: SEWA2212000088RG02

Rev.: 01

Page: 18 of 99

Modulation characteristics for SA

Test Result

Band	SCS	Bandwidth	Modulation	Channel	RB Config	Result	Verdict
N25	15	40	DFT-PI2BPSK	M	Outer_Full	see graph	PASS
N25	15	40	DFT-QPSK	M	Outer_Full	see graph	PASS
N25	15	40	DFT-16QAM	M	Outer_Full	see graph	PASS
N25	15	40	DFT-64QAM	M	Outer_Full	see graph	PASS
N25	15	40	DFT-256QAM	M	Outer_Full	see graph	PASS
N25	15	40	CP-QPSK	M	Outer_Full	see graph	PASS
N25	15	40	CP-16QAM	M	Outer_Full	see graph	PASS
N25	15	40	CP-64QAM	M	Outer_Full	see graph	PASS
N25	15	40	CP-256QAM	M	Outer_Full	see graph	PASS

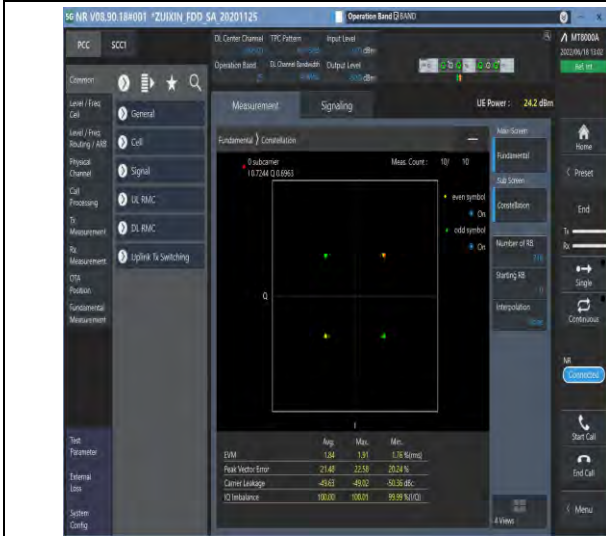


Unless otherwise agreed in writing, this document is issued by the Company subject to its General Conditions of Service printed overleaf, available on request or accessible at <http://www.sgs.com/en/Terms-and-Conditions.aspx> and, for electronic format documents, subject to Terms and Conditions for Electronic Documents at <http://www.sgs.com/en/Terms-and-Conditions/Terms-e-Documents.aspx>. Attention is drawn to the limitation of liability, indemnification and jurisdiction issues defined therein. Any holder of this document is advised that information contained hereon reflects the Company's findings at the time of its intervention only and within the limits of Client's instructions, if any. The Company's sole responsibility is to its Client and this document does not exonerate parties to a transaction from exercising all their rights and obligations under the transaction documents. This document cannot be reproduced except in full, without prior written approval of the Company. Any unauthorized alteration, forgery or falsification of the content or appearance of this document is unlawful and offenders may be prosecuted to the fullest extent of the law. Unless otherwise stated the results shown in this test report refer only to the sample(s) tested and such sample(s) are retained for 30 days only.

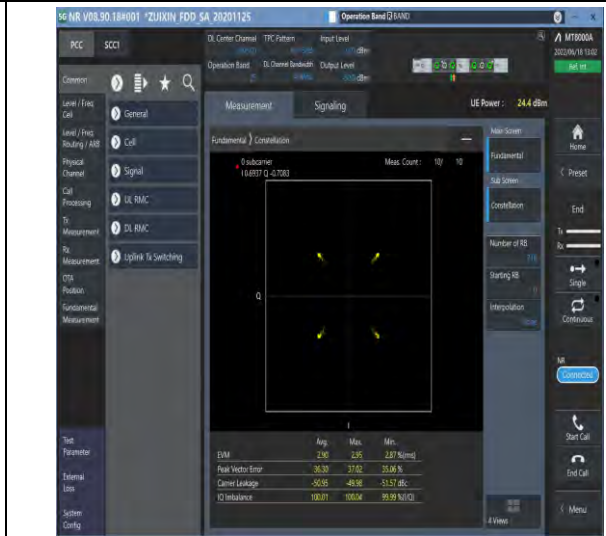
Attention: To check the authenticity of testing/inspection report & certificate, please contact us at telephone: (86-755) 8307 1443, or email: CN.Doccheck@sgs.com

South of No. 6 Plant, No. 1, Pansheng Road, Suzhou Industrial Park, Suzhou Area, China (Jiangsu) Pilot Free Trade Zone 215000 t (86-512) 62992980 www.sgs.com.cn
 中国·苏州·中国(江苏)自由贸易试验区苏州片区苏州工业园区海胜路1号的6号厂房南楼 邮编: 215000 t (86-512) 62992980 sgs.china@sgs.com

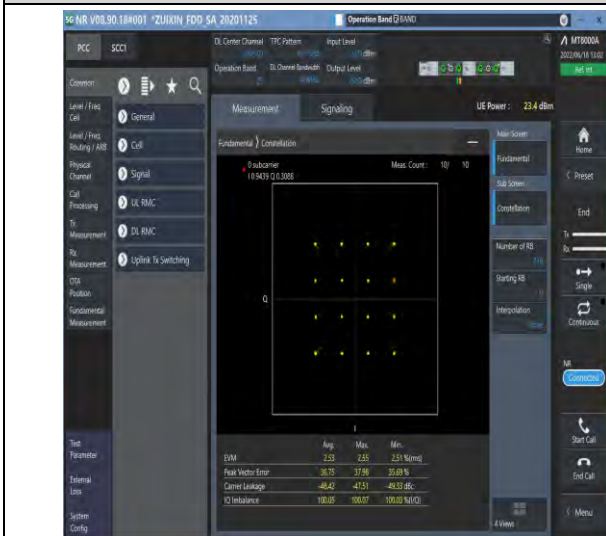
Test Graphs



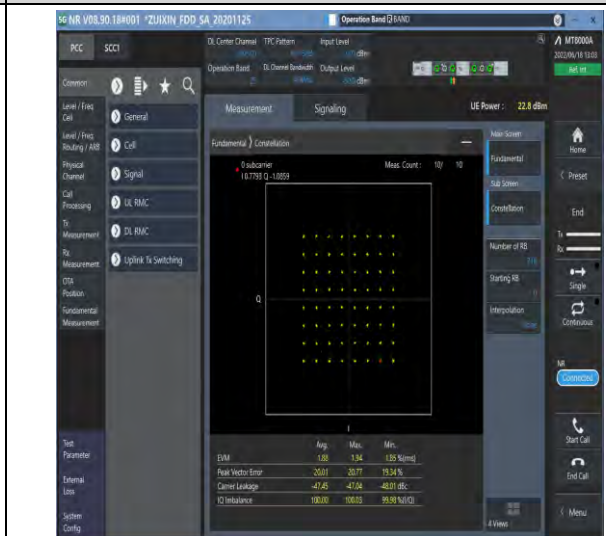
1-N25--15-40-M-1-DFT-PI2BPSK-Outer_Full-216@0-
 Ant1-see graph-PASS



1-N25--15-40-M-2-DFT-QPSK-Outer_Full-216@0-A
 nt1-see graph-PASS



1-N25--15-40-M-3-DFT-16QAM-Outer_Full-216@0-A
 nt1-see graph-PASS



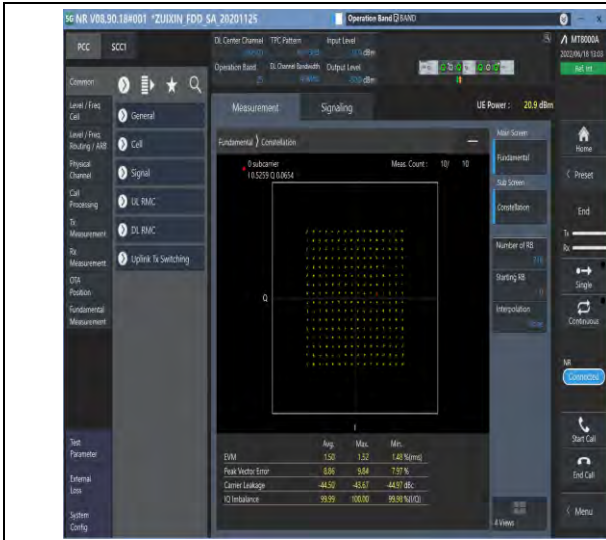
1-N25--15-40-M-4-DFT-64QAM-Outer_Full-216@0-
 Ant1-see graph-PASS



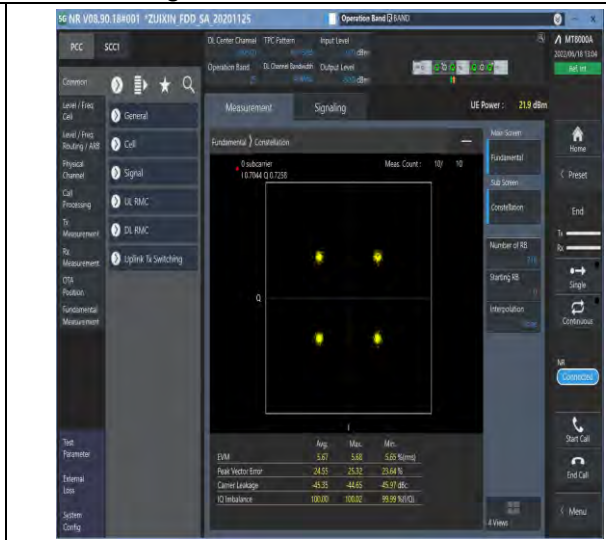
Unless otherwise agreed in writing, this document is issued by the Company subject to its General Conditions of Service printed overleaf, available on request or accessible at <http://www.sgs.com/en/Terms-and-Conditions.aspx> and, for electronic format documents, subject to Terms and Conditions for Electronic Documents at <http://www.sgs.com/en/Terms-and-Conditions/Terms-e-Documents.aspx>. Attention is drawn to the limitation of liability, indemnification and jurisdiction issues defined therein. Any holder of this document is advised that information contained hereon reflects the Company's findings at the time of its intervention only and within the limits of Client's instructions, if any. The Company's sole responsibility is to its Client and this document does not exonerate parties to a transaction from exercising all their rights and obligations under the transaction documents. This document cannot be reproduced except in full, without prior written approval of the Company. Any unauthorized alteration, forgery or falsification of the content or appearance of this document is unlawful and offenders may be prosecuted to the fullest extent of the law. Unless otherwise stated the results shown in this test report refer only to the sample(s) tested and such sample(s) are retained for 30 days only.
Attention: To check the authenticity of testing/inspection report & certificate, please contact us at telephone: (86-755) 8307 1443, or email: CN.Doccheck@sgs.com

South of No. 6 Plant, No. 1, Runsheng Road, Suzhou Industrial Park, Suzhou Area, China (Jiangsu) Pilot Free Trade Zone 215000
 中国·苏州·中国(江苏)自由贸易试验区苏州片区苏州工业园区润胜路1号的6号厂房南楼 邮编: 215000

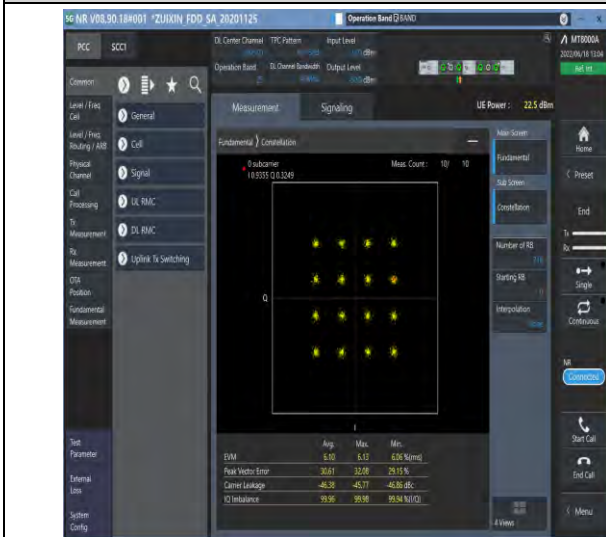
t (86-512) 62992980 www.sgs.com.cn
 t (86-512) 62992980 sgs.china@sgs.com



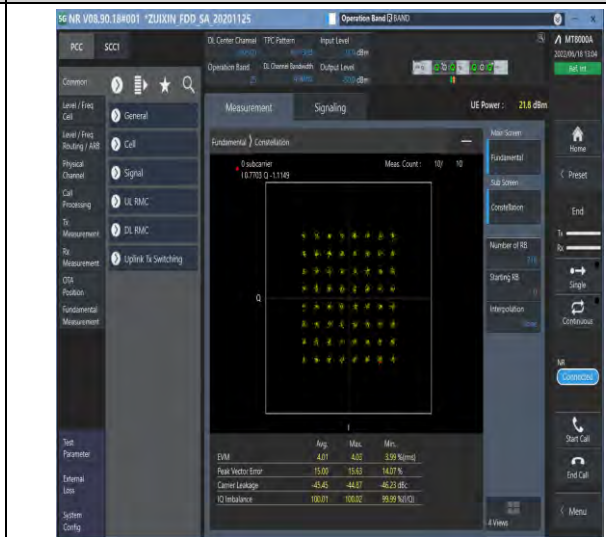
1-N25--15-40-M-5-DFT-256QAM-Outer_Full-216@0-Ant1-see graph-PASS



1-N25--15-40-M-6-CP-QPSK-Outer_Full-216@0-Ant1-see graph-PASS



1-N25--15-40-M-7-CP-16QAM-Outer_Full-216@0-Ant1-see graph-PASS



1-N25--15-40-M-8-CP-64QAM-Outer_Full-216@0-Ant1-see graph-PASS

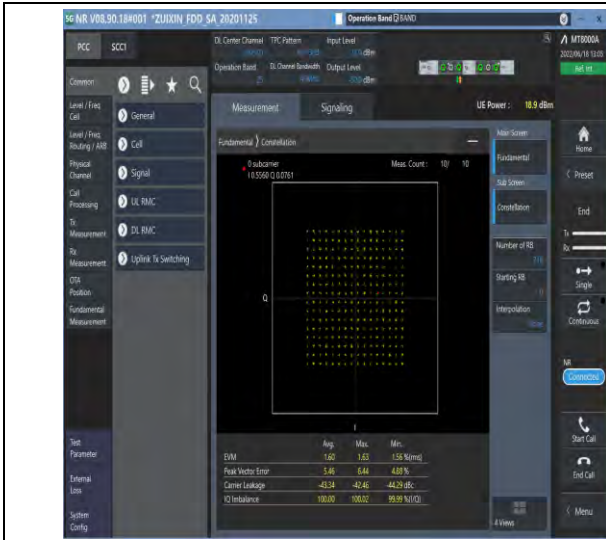


Unless otherwise agreed in writing, this document is issued by the Company subject to its General Conditions of Service printed overleaf, available on request or accessible at <http://www.sgs.com/en/Terms-and-Conditions.aspx> and, for electronic format documents, subject to Terms and Conditions for Electronic Documents at <http://www.sgs.com/en/Terms-and-Conditions/Terms-e-Documents.aspx>. Attention is drawn to the limitation of liability, indemnification and jurisdiction issues defined therein. Any holder of this document is advised that information contained hereon reflects the Company's findings at the time of its intervention only and within the limits of Client's instructions, if any. The Company's sole responsibility is to its Client and this document does not exonerate parties to a transaction from exercising all their rights and obligations under the transaction documents. This document cannot be reproduced except in full, without prior written approval of the Company. Any unauthorized alteration, forgery or falsification of the content or appearance of this document is unlawful and offenders may be prosecuted to the fullest extent of the law. Unless otherwise stated the results shown in this test report refer only to the sample(s) tested and such sample(s) are retained for 30 days only.

Attention: To check the authenticity of testing/inspection report & certificate, please contact us at telephone: (86-755) 8307 1443, or email: CN.Doccheck@sgs.com

South of No. 6 Plant, No. 1, Runsheng Road, Suzhou Industrial Park, Suzhou Area, China (Jiangsu) Pilot Free Trade Zone 215000
 中国·苏州·中国(江苏)自由贸易试验区苏州片区苏州工业园区润胜路1号的6号厂房南座 邮编: 215000

t (86-512) 62992980 www.sgs.com.cn
 t (86-512) 62992980 sgs.china@sgs.com



1-N25--15-40-M-9-CP-256QAM-Outer_Full-216@0-A
nt1-see graph-PASS



Unless otherwise agreed in writing, this document is issued by the Company subject to its General Conditions of Service printed overleaf, available on request or accessible at <http://www.sgs.com/en/Terms-and-Conditions.aspx> and, for electronic format documents, subject to Terms and Conditions for Electronic Documents at <http://www.sgs.com/en/Terms-and-Conditions/Terms-e-Documents.aspx>. Attention is drawn to the limitation of liability, indemnification and jurisdiction issues defined therein. Any holder of this document is advised that information contained hereon reflects the Company's findings at the time of its intervention only and within the limits of Client's instructions, if any. The Company's sole responsibility is to its Client and this document does not exonerate parties to a transaction from exercising all their rights and obligations under the transaction documents. This document cannot be reproduced except in full, without prior written approval of the Company. Any unauthorized alteration, forgery or falsification of the content or appearance of this document is unlawful and offenders may be prosecuted to the fullest extent of the law. Unless otherwise stated the results shown in this test report refer only to the sample(s) tested and such sample(s) are retained for 30 days only.
Attention: To check the authenticity of testing/inspection report & certificate, please contact us at telephone: (86-755) 8307 1443, or email: CN.Doccheck@sgs.com

South of No. 6 Plant, No. 1, Runsheng Road, Suzhou Industrial Park, Suzhou Area, China (Jiangsu) Pilot Free Trade Zone 215000 t (86-512) 62992980 www.sgsgroup.com.cn
中国·苏州·中国(江苏)自由贸易试验区苏州片区苏州工业园区海胜路1号的6号厂房南楼 邮编: 215000 t (86-512) 62992980 sgs.china@sgs.com

26dB Bandwidth and Occupied Bandwidth for SA

Test Result

Band	SCS	Bandwidth	Modulation	Channel	RB Config	Result (99%)	Result (26dB)	Verdict
N25	15	5	DFT-QPSK	L	Outer_Full	4.472	4.880	PASS
N25	15	5	DFT-PI2BPSK	L	Outer_Full	4.447	4.830	PASS
N25	15	5	DFT-16QAM	L	Outer_Full	4.469	4.860	PASS
N25	15	5	DFT-64QAM	L	Outer_Full	4.485	4.930	PASS
N25	15	5	DFT-256QAM	L	Outer_Full	4.475	4.860	PASS
N25	15	5	CP-QPSK	L	Outer_Full	4.455	4.810	PASS
N25	15	5	CP-16QAM	L	Outer_Full	4.471	4.850	PASS
N25	15	5	CP-64QAM	L	Outer_Full	4.472	4.870	PASS
N25	15	5	CP-256QAM	L	Outer_Full	4.464	4.890	PASS
N25	15	5	DFT-QPSK	M	Outer_Full	4.465	4.830	PASS
N25	15	5	DFT-PI2BPSK	M	Outer_Full	4.453	4.910	PASS
N25	15	5	DFT-16QAM	M	Outer_Full	4.472	4.850	PASS
N25	15	5	DFT-64QAM	M	Outer_Full	4.464	4.850	PASS
N25	15	5	DFT-256QAM	M	Outer_Full	4.469	4.880	PASS
N25	15	5	CP-QPSK	M	Outer_Full	4.476	4.890	PASS
N25	15	5	CP-16QAM	M	Outer_Full	4.467	4.880	PASS
N25	15	5	CP-64QAM	M	Outer_Full	4.472	4.860	PASS
N25	15	5	CP-256QAM	M	Outer_Full	4.471	4.970	PASS
N25	15	5	DFT-QPSK	H	Outer_Full	4.481	4.870	PASS
N25	15	5	DFT-PI2BPSK	H	Outer_Full	4.473	4.800	PASS
N25	15	5	DFT-16QAM	H	Outer_Full	4.465	4.880	PASS
N25	15	5	DFT-64QAM	H	Outer_Full	4.469	4.930	PASS
N25	15	5	DFT-256QAM	H	Outer_Full	4.462	4.950	PASS
N25	15	5	CP-QPSK	H	Outer_Full	4.464	4.840	PASS
N25	15	5	CP-16QAM	H	Outer_Full	4.464	4.850	PASS
N25	15	5	CP-64QAM	H	Outer_Full	4.469	4.910	PASS
N25	15	5	CP-256QAM	H	Outer_Full	4.483	4.890	PASS
N25	15	10	DFT-QPSK	L	Outer_Full	8.928	9.500	PASS
N25	15	10	DFT-PI2BPSK	L	Outer_Full	8.924	9.520	PASS
N25	15	10	DFT-16QAM	L	Outer_Full	8.944	9.520	PASS
N25	15	10	DFT-64QAM	L	Outer_Full	8.921	9.440	PASS
N25	15	10	DFT-256QAM	L	Outer_Full	8.934	9.480	PASS



Unless otherwise agreed in writing, this document is issued by the Company subject to its General Conditions of Service printed overleaf, available on request or accessible at <http://www.sgs.com/en/Terms-and-Conditions.aspx> and, for electronic format documents, subject to Terms and Conditions for Electronic Documents at <http://www.sgs.com/en/Terms-and-Conditions/Terms-e-Documents.aspx>. Attention is drawn to the limitation of liability, indemnification and jurisdiction issues defined therein. Any holder of this document is advised that information contained hereon reflects the Company's findings at the time of its intervention only and within the limits of Client's instructions, if any. The Company's sole responsibility is to its Client and this document does not exonerate parties to a transaction from exercising all their rights and obligations under the transaction documents. This document cannot be reproduced except in full, without prior written approval of the Company. Any unauthorized alteration, forgery or falsification of the content or appearance of this document is unlawful and offenders may be prosecuted to the fullest extent of the law. Unless otherwise stated the results shown in this test report refer only to the sample(s) tested and such sample(s) are retained for 30 days only.

Attention: To check the authenticity of testing/inspection report & certificate, please contact us at telephone: (86-755) 8307 1443, or email: CN.Doccheck@sgs.com

South of No. 6 Plant, No. 1, Pansheng Road, Suzhou Industrial Park, Suzhou Area, China (Jiangsu) Pilot Free Trade Zone 215000
 中国·苏州·中国(江苏)自由贸易试验区苏州片区苏州工业园区海胜路1号的6号厂房南楼 邮编: 215000

t (86-512) 62992980 www.sgs.com.cn
 t (86-512) 62992980 sgs.china@sgs.com



Report No.: SEWA2212000088RG02

Rev.: 01

Page: 23 of 99

N25	15	10	CP-QPSK	L	Outer_Full	9.303	9.860	PASS
N25	15	10	CP-16QAM	L	Outer_Full	9.27	9.800	PASS
N25	15	10	CP-64QAM	L	Outer_Full	9.277	9.880	PASS
N25	15	10	CP-256QAM	L	Outer_Full	9.291	9.860	PASS
N25	15	10	DFT-QPSK	M	Outer_Full	8.918	9.480	PASS
N25	15	10	DFT-PI2BPSK	M	Outer_Full	8.914	9.540	PASS
N25	15	10	DFT-16QAM	M	Outer_Full	8.942	9.500	PASS
N25	15	10	DFT-64QAM	M	Outer_Full	8.92	9.540	PASS
N25	15	10	DFT-256QAM	M	Outer_Full	8.937	9.540	PASS
N25	15	10	CP-QPSK	M	Outer_Full	9.285	10.020	PASS
N25	15	10	CP-16QAM	M	Outer_Full	9.28	9.760	PASS
N25	15	10	CP-64QAM	M	Outer_Full	9.283	9.920	PASS
N25	15	10	CP-256QAM	M	Outer_Full	9.295	9.880	PASS
N25	15	10	DFT-QPSK	H	Outer_Full	8.929	9.420	PASS
N25	15	10	DFT-PI2BPSK	H	Outer_Full	8.93	9.480	PASS
N25	15	10	DFT-16QAM	H	Outer_Full	8.93	9.520	PASS
N25	15	10	DFT-64QAM	H	Outer_Full	8.933	9.540	PASS
N25	15	10	DFT-256QAM	H	Outer_Full	8.94	9.520	PASS
N25	15	10	CP-QPSK	H	Outer_Full	9.288	9.980	PASS
N25	15	10	CP-16QAM	H	Outer_Full	9.267	9.760	PASS
N25	15	10	CP-64QAM	H	Outer_Full	9.271	9.840	PASS
N25	15	10	CP-256QAM	H	Outer_Full	9.274	9.940	PASS
N25	15	15	DFT-QPSK	L	Outer_Full	13.437	14.250	PASS
N25	15	15	DFT-PI2BPSK	L	Outer_Full	13.439	14.160	PASS
N25	15	15	DFT-16QAM	L	Outer_Full	13.437	14.370	PASS
N25	15	15	DFT-64QAM	L	Outer_Full	13.426	14.220	PASS
N25	15	15	DFT-256QAM	L	Outer_Full	13.403	14.340	PASS
N25	15	15	CP-QPSK	L	Outer_Full	14.096	14.820	PASS
N25	15	15	CP-16QAM	L	Outer_Full	14.092	14.850	PASS
N25	15	15	CP-64QAM	L	Outer_Full	14.131	14.820	PASS
N25	15	15	CP-256QAM	L	Outer_Full	14.153	14.940	PASS
N25	15	15	DFT-QPSK	M	Outer_Full	13.497	14.250	PASS
N25	15	15	DFT-PI2BPSK	M	Outer_Full	13.436	14.130	PASS
N25	15	15	DFT-16QAM	M	Outer_Full	13.433	14.280	PASS
N25	15	15	DFT-64QAM	M	Outer_Full	13.418	14.130	PASS
N25	15	15	DFT-256QAM	M	Outer_Full	13.431	14.280	PASS
N25	15	15	CP-QPSK	M	Outer_Full	14.107	14.910	PASS
N25	15	15	CP-16QAM	M	Outer_Full	14.108	14.880	PASS



Unless otherwise agreed in writing, this document is issued by the Company subject to its General Conditions of Service printed overleaf, available on request or accessible at <http://www.sgs.com/en/Terms-and-Conditions.aspx> and, for electronic format documents, subject to Terms and Conditions for Electronic Documents at <http://www.sgs.com/en/Terms-and-Conditions/Terms-e-Documents.aspx>. Attention is drawn to the limitation of liability, indemnification and jurisdiction issues defined therein. Any holder of this document is advised that information contained hereon reflects the Company's findings at the time of its intervention only and within the limits of Client's instructions, if any. The Company's sole responsibility is to its Client and this document does not exonerate parties to a transaction from exercising all their rights and obligations under the transaction documents. This document cannot be reproduced except in full, without prior written approval of the Company. Any unauthorized alteration, forgery or falsification of the content or appearance of this document is unlawful and offenders may be prosecuted to the fullest extent of the law. Unless otherwise stated the results shown in this test report refer only to the sample(s) tested and such sample(s) are retained for 30 days only.

Attention: To check the authenticity of testing/inspection report & certificate, please contact us at telephone: (86-755) 8307 1443, or email: CN.Doccheck@sgs.com

South of No. 6 Plant, No. 1, Pansheng Road, Suzhou Industrial Park, Suzhou Area, China (Jiangsu) Pilot Free Trade Zone 215000
 中国·苏州·中国(江苏)自由贸易试验区苏州片区苏州工业园区海胜路1号的6号厂房南楼 邮编: 215000

t (86-512) 62992980 www.sgs.com.cn
 t (86-512) 62992980 sgs.china@sgs.com



Report No.: SEWA2212000088RG02

Rev.: 01

Page: 24 of 99

N25	15	15	CP-64QAM	M	Outer_Full	14.124	14.910	PASS
N25	15	15	CP-256QAM	M	Outer_Full	14.113	14.940	PASS
N25	15	15	DFT-QPSK	H	Outer_Full	13.434	14.130	PASS
N25	15	15	DFT-PI2BPSK	H	Outer_Full	13.439	14.250	PASS
N25	15	15	DFT-16QAM	H	Outer_Full	13.423	14.310	PASS
N25	15	15	DFT-64QAM	H	Outer_Full	13.405	14.250	PASS
N25	15	15	DFT-256QAM	H	Outer_Full	13.416	14.220	PASS
N25	15	15	CP-QPSK	H	Outer_Full	14.129	14.940	PASS
N25	15	15	CP-16QAM	H	Outer_Full	14.102	14.910	PASS
N25	15	15	CP-64QAM	H	Outer_Full	14.117	14.880	PASS
N25	15	15	CP-256QAM	H	Outer_Full	14.13	14.790	PASS
N25	15	20	DFT-QPSK	L	Outer_Full	17.838	18.600	PASS
N25	15	20	DFT-PI2BPSK	L	Outer_Full	17.858	18.720	PASS
N25	15	20	DFT-16QAM	L	Outer_Full	17.852	18.640	PASS
N25	15	20	DFT-64QAM	L	Outer_Full	17.847	18.640	PASS
N25	15	20	DFT-256QAM	L	Outer_Full	17.882	18.600	PASS
N25	15	20	CP-QPSK	L	Outer_Full	18.925	19.840	PASS
N25	15	20	CP-16QAM	L	Outer_Full	18.863	19.800	PASS
N25	15	20	CP-64QAM	L	Outer_Full	18.909	19.760	PASS
N25	15	20	CP-256QAM	L	Outer_Full	18.905	19.760	PASS
N25	15	20	DFT-QPSK	M	Outer_Full	17.85	18.640	PASS
N25	15	20	DFT-PI2BPSK	M	Outer_Full	17.886	18.680	PASS
N25	15	20	DFT-16QAM	M	Outer_Full	17.881	18.720	PASS
N25	15	20	DFT-64QAM	M	Outer_Full	17.861	18.680	PASS
N25	15	20	DFT-256QAM	M	Outer_Full	17.865	18.680	PASS
N25	15	20	CP-QPSK	M	Outer_Full	18.883	19.640	PASS
N25	15	20	CP-16QAM	M	Outer_Full	18.905	19.680	PASS
N25	15	20	CP-64QAM	M	Outer_Full	18.873	19.720	PASS
N25	15	20	CP-256QAM	M	Outer_Full	18.895	19.840	PASS
N25	15	20	DFT-QPSK	H	Outer_Full	17.848	18.520	PASS
N25	15	20	DFT-PI2BPSK	H	Outer_Full	17.867	18.640	PASS
N25	15	20	DFT-16QAM	H	Outer_Full	17.859	18.680	PASS
N25	15	20	DFT-64QAM	H	Outer_Full	17.841	18.680	PASS
N25	15	20	DFT-256QAM	H	Outer_Full	17.842	18.680	PASS
N25	15	20	CP-QPSK	H	Outer_Full	18.904	19.720	PASS
N25	15	20	CP-16QAM	H	Outer_Full	18.913	19.920	PASS
N25	15	20	CP-64QAM	H	Outer_Full	18.917	20.680	PASS
N25	15	20	CP-256QAM	H	Outer_Full	18.893	19.720	PASS



Unless otherwise agreed in writing, this document is issued by the Company subject to its General Conditions of Service printed overleaf, available on request or accessible at <http://www.sgs.com/en/Terms-and-Conditions.aspx> and, for electronic format documents, subject to Terms and Conditions for Electronic Documents at <http://www.sgs.com/en/Terms-and-Conditions/Terms-e-Documents.aspx>. Attention is drawn to the limitation of liability, indemnification and jurisdiction issues defined therein. Any holder of this document is advised that information contained hereon reflects the Company's findings at the time of its intervention only and within the limits of Client's instructions, if any. The Company's sole responsibility is to its Client and this document does not exonerate parties to a transaction from exercising all their rights and obligations under the transaction documents. This document cannot be reproduced except in full, without prior written approval of the Company. Any unauthorized alteration, forgery or falsification of the content or appearance of this document is unlawful and offenders may be prosecuted to the fullest extent of the law. Unless otherwise stated the results shown in this test report refer only to the sample(s) tested and such sample(s) are retained for 30 days only.

Attention: To check the authenticity of testing/inspection report & certificate, please contact us at telephone: (86-755) 8307 1443, or email: CN.Doccheck@sgs.com

South of No. 6 Plant, No. 1, Pansheng Road, Suzhou Industrial Park, Suzhou Area, China (Jiangsu) Pilot Free Trade Zone 215000
 中国·苏州·中国(江苏)自由贸易试验区苏州片区苏州工业园区海胜路1号的6号厂房南楼 邮编: 215000

t (86-512) 62992980 www.sgs.com.cn
 t (86-512) 62992980 sgs.china@sgs.com



Report No.: SEWA2212000088RG02

Rev.: 01

Page: 25 of 99

N25	15	25	DFT-QPSK	L	Outer_Full	22.843	23.850	PASS
N25	15	25	DFT-PI2BPSK	L	Outer_Full	22.86	23.900	PASS
N25	15	25	DFT-16QAM	L	Outer_Full	22.847	23.900	PASS
N25	15	25	DFT-64QAM	L	Outer_Full	22.837	23.800	PASS
N25	15	25	DFT-256QAM	L	Outer_Full	22.89	23.950	PASS
N25	15	25	CP-QPSK	L	Outer_Full	23.741	24.850	PASS
N25	15	25	CP-16QAM	L	Outer_Full	23.783	24.800	PASS
N25	15	25	CP-64QAM	L	Outer_Full	23.686	24.900	PASS
N25	15	25	CP-256QAM	L	Outer_Full	23.699	24.850	PASS
N25	15	25	DFT-QPSK	M	Outer_Full	22.838	23.950	PASS
N25	15	25	DFT-PI2BPSK	M	Outer_Full	22.826	23.850	PASS
N25	15	25	DFT-16QAM	M	Outer_Full	22.844	23.750	PASS
N25	15	25	DFT-64QAM	M	Outer_Full	22.791	23.800	PASS
N25	15	25	DFT-256QAM	M	Outer_Full	22.874	23.900	PASS
N25	15	25	CP-QPSK	M	Outer_Full	23.754	24.750	PASS
N25	15	25	CP-16QAM	M	Outer_Full	23.769	24.950	PASS
N25	15	25	CP-64QAM	M	Outer_Full	23.738	24.850	PASS
N25	15	25	CP-256QAM	M	Outer_Full	23.715	24.950	PASS
N25	15	25	DFT-QPSK	H	Outer_Full	22.84	24.000	PASS
N25	15	25	DFT-PI2BPSK	H	Outer_Full	22.874	23.850	PASS
N25	15	25	DFT-16QAM	H	Outer_Full	22.837	23.800	PASS
N25	15	25	DFT-64QAM	H	Outer_Full	22.867	23.900	PASS
N25	15	25	DFT-256QAM	H	Outer_Full	22.855	23.850	PASS
N25	15	25	CP-QPSK	H	Outer_Full	23.751	24.850	PASS
N25	15	25	CP-16QAM	H	Outer_Full	23.779	24.800	PASS
N25	15	25	CP-64QAM	H	Outer_Full	23.67	24.650	PASS
N25	15	25	CP-256QAM	H	Outer_Full	23.69	24.850	PASS
N25	15	30	DFT-QPSK	L	Outer_Full	28.55	29.700	PASS
N25	15	30	DFT-PI2BPSK	L	Outer_Full	28.625	29.700	PASS
N25	15	30	DFT-16QAM	L	Outer_Full	28.593	29.700	PASS
N25	15	30	DFT-64QAM	L	Outer_Full	28.575	29.700	PASS
N25	15	30	DFT-256QAM	L	Outer_Full	28.558	29.700	PASS
N25	15	30	CP-QPSK	L	Outer_Full	28.497	29.760	PASS
N25	15	30	CP-16QAM	L	Outer_Full	28.593	29.580	PASS
N25	15	30	CP-64QAM	L	Outer_Full	28.427	29.640	PASS
N25	15	30	CP-256QAM	L	Outer_Full	28.439	29.640	PASS
N25	15	30	DFT-QPSK	M	Outer_Full	28.539	29.580	PASS
N25	15	30	DFT-PI2BPSK	M	Outer_Full	28.612	29.700	PASS



Unless otherwise agreed in writing, this document is issued by the Company subject to its General Conditions of Service printed overleaf, available on request or accessible at <http://www.sgs.com/en/Terms-and-Conditions.aspx> and, for electronic format documents, subject to Terms and Conditions for Electronic Documents at <http://www.sgs.com/en/Terms-and-Conditions/Terms-e-Documents.aspx>. Attention is drawn to the limitation of liability, indemnification and jurisdiction issues defined therein. Any holder of this document is advised that information contained hereon reflects the Company's findings at the time of its intervention only and within the limits of Client's instructions, if any. The Company's sole responsibility is to its Client and this document does not exonerate parties to a transaction from exercising all their rights and obligations under the transaction documents. This document cannot be reproduced except in full, without prior written approval of the Company. Any unauthorized alteration, forgery or falsification of the content or appearance of this document is unlawful and offenders may be prosecuted to the fullest extent of the law. Unless otherwise stated the results shown in this test report refer only to the sample(s) tested and such sample(s) are retained for 30 days only.

Attention: To check the authenticity of testing/inspection report & certificate, please contact us at telephone: (86-755) 8307 1443, or email: CN.Doccheck@sgs.com

South of No. 6 Plant, No. 1, Pansheng Road, Suzhou Industrial Park, Suzhou Area, China (Jiangsu) Pilot Free Trade Zone 215000
 中国·苏州·中国(江苏)自由贸易试验区苏州片区苏州工业园区海胜路1号的6号厂房南楼 邮编: 215000

t (86-512) 62992980 www.sgs.com.cn
 t (86-512) 62992980 sgs.china@sgs.com



Report No.: SEWA2212000088RG02

Rev.: 01

Page: 26 of 99

N25	15	30	DFT-16QAM	M	Outer_Full	28.565	29.580	PASS
N25	15	30	DFT-64QAM	M	Outer_Full	28.589	29.580	PASS
N25	15	30	DFT-256QAM	M	Outer_Full	28.525	29.580	PASS
N25	15	30	CP-QPSK	M	Outer_Full	28.418	29.640	PASS
N25	15	30	CP-16QAM	M	Outer_Full	28.559	29.640	PASS
N25	15	30	CP-64QAM	M	Outer_Full	28.486	29.700	PASS
N25	15	30	CP-256QAM	M	Outer_Full	28.46	29.640	PASS
N25	15	30	DFT-QPSK	H	Outer_Full	28.512	29.640	PASS
N25	15	30	DFT-PI2BPSK	H	Outer_Full	28.509	29.700	PASS
N25	15	30	DFT-16QAM	H	Outer_Full	28.527	29.700	PASS
N25	15	30	DFT-64QAM	H	Outer_Full	28.588	29.580	PASS
N25	15	30	DFT-256QAM	H	Outer_Full	28.511	29.760	PASS
N25	15	30	CP-QPSK	H	Outer_Full	28.522	29.640	PASS
N25	15	30	CP-16QAM	H	Outer_Full	28.535	29.760	PASS
N25	15	30	CP-64QAM	H	Outer_Full	28.483	29.640	PASS
N25	15	30	CP-256QAM	H	Outer_Full	28.45	29.640	PASS
N25	15	40	DFT-QPSK	L	Outer_Full	38.532	40.160	PASS
N25	15	40	DFT-PI2BPSK	L	Outer_Full	38.467	40.160	PASS
N25	15	40	DFT-16QAM	L	Outer_Full	38.494	40.160	PASS
N25	15	40	DFT-64QAM	L	Outer_Full	38.532	40.240	PASS
N25	15	40	DFT-256QAM	L	Outer_Full	38.49	40.160	PASS
N25	15	40	CP-QPSK	L	Outer_Full	38.4	40.160	PASS
N25	15	40	CP-16QAM	L	Outer_Full	38.519	40.160	PASS
N25	15	40	CP-64QAM	L	Outer_Full	38.574	40.160	PASS
N25	15	40	CP-256QAM	L	Outer_Full	38.398	40.160	PASS
N25	15	40	DFT-QPSK	M	Outer_Full	38.503	40.160	PASS
N25	15	40	DFT-PI2BPSK	M	Outer_Full	38.411	40.160	PASS
N25	15	40	DFT-16QAM	M	Outer_Full	38.489	40.160	PASS
N25	15	40	DFT-64QAM	M	Outer_Full	38.395	40.160	PASS
N25	15	40	DFT-256QAM	M	Outer_Full	38.357	40.160	PASS
N25	15	40	CP-QPSK	M	Outer_Full	38.496	40.160	PASS
N25	15	40	CP-16QAM	M	Outer_Full	38.424	40.160	PASS
N25	15	40	CP-64QAM	M	Outer_Full	38.433	40.160	PASS
N25	15	40	CP-256QAM	M	Outer_Full	38.384	40.160	PASS
N25	15	40	DFT-QPSK	H	Outer_Full	38.356	40.160	PASS
N25	15	40	DFT-PI2BPSK	H	Outer_Full	38.365	40.080	PASS
N25	15	40	DFT-16QAM	H	Outer_Full	38.443	40.160	PASS
N25	15	40	DFT-64QAM	H	Outer_Full	38.463	40.160	PASS



Unless otherwise agreed in writing, this document is issued by the Company subject to its General Conditions of Service printed overleaf, available on request or accessible at <http://www.sgs.com/en/Terms-and-Conditions.aspx> and, for electronic format documents, subject to Terms and Conditions for Electronic Documents at <http://www.sgs.com/en/Terms-and-Conditions/Terms-e-Documents.aspx>. Attention is drawn to the limitation of liability, indemnification and jurisdiction issues defined therein. Any holder of this document is advised that information contained hereon reflects the Company's findings at the time of its intervention only and within the limits of Client's instructions, if any. The Company's sole responsibility is to its Client and this document does not exonerate parties to a transaction from exercising all their rights and obligations under the transaction documents. This document cannot be reproduced except in full, without prior written approval of the Company. Any unauthorized alteration, forgery or falsification of the content or appearance of this document is unlawful and offenders may be prosecuted to the fullest extent of the law. Unless otherwise stated the results shown in this test report refer only to the sample(s) tested and such sample(s) are retained for 30 days only.

Attention: To check the authenticity of testing/inspection report & certificate, please contact us at telephone: (86-755) 8307 1443, or email: CN.Doccheck@sgs.com

South of No. 6 Plant, No. 1, Pansheng Road, Suzhou Industrial Park, Suzhou Area, China (Jiangsu) Pilot Free Trade Zone 215000
 中国·苏州·中国(江苏)自由贸易试验区苏州片区苏州工业园区海胜路1号的6号厂房南楼 邮编: 215000

t (86-512) 62992980 www.sgs.com.cn
 t (86-512) 62992980 sgs.china@sgs.com



Report No.: SEWA2212000088RG02

Rev.: 01

Page: 27 of 99

N25	15	40	DFT-256QAM	H	Outer_Full	38.315	40.080	PASS
N25	15	40	CP-QPSK	H	Outer_Full	38.473	40.160	PASS
N25	15	40	CP-16QAM	H	Outer_Full	38.536	40.160	PASS
N25	15	40	CP-64QAM	H	Outer_Full	38.433	40.160	PASS
N25	15	40	CP-256QAM	H	Outer_Full	38.5	40.080	PASS



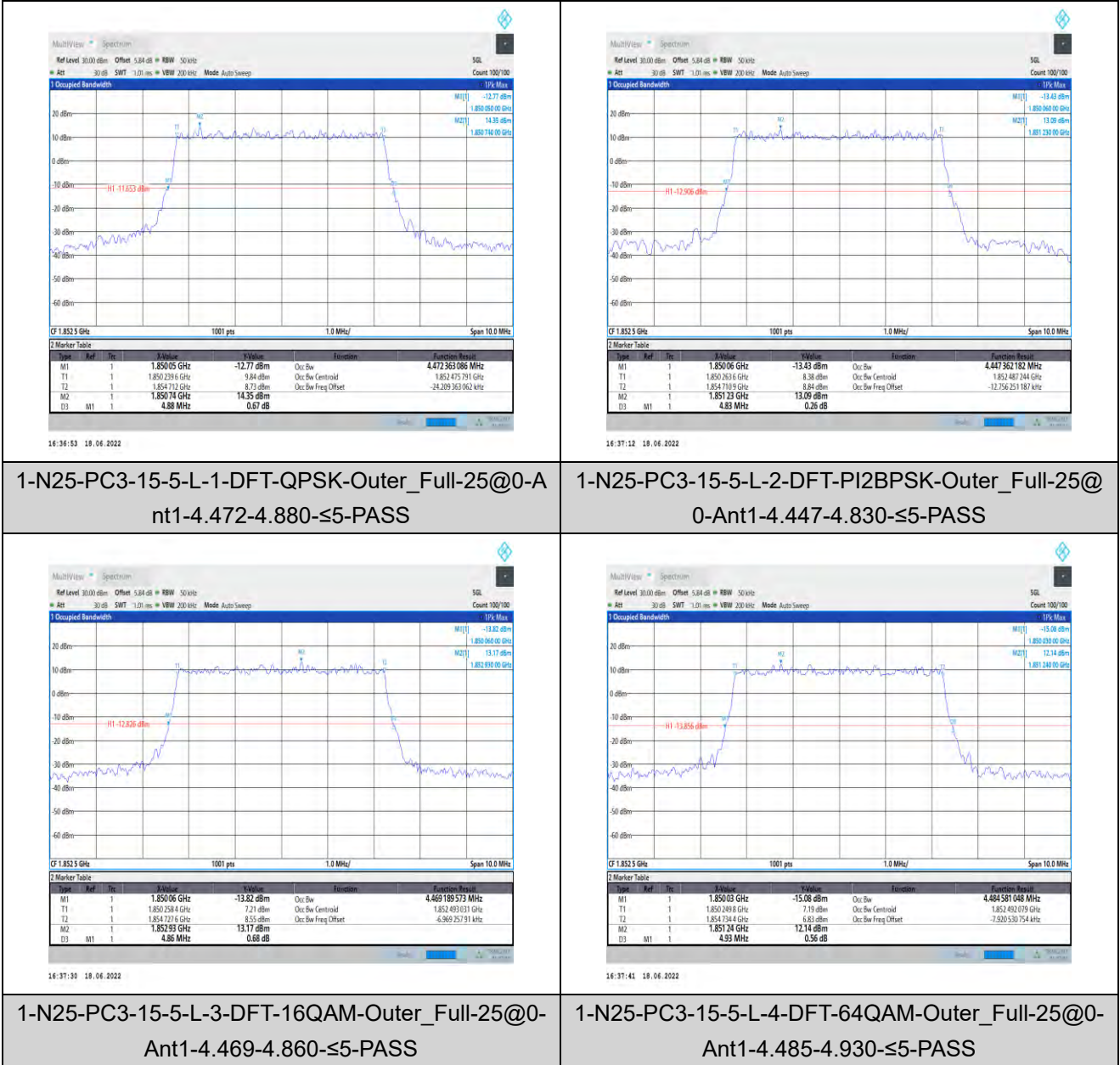
Unless otherwise agreed in writing, this document is issued by the Company subject to its General Conditions of Service printed overleaf, available on request or accessible at <http://www.sgs.com/en/Terms-and-Conditions.aspx> and, for electronic format documents, subject to Terms and Conditions for Electronic Documents at <http://www.sgs.com/en/Terms-and-Conditions/Terms-e-Documents.aspx>. Attention is drawn to the limitation of liability, indemnification and jurisdiction issues defined therein. Any holder of this document is advised that information contained hereon reflects the Company's findings at the time of its intervention only and within the limits of Client's instructions, if any. The Company's sole responsibility is to its Client and this document does not exonerate parties to a transaction from exercising all their rights and obligations under the transaction documents. This document cannot be reproduced except in full, without prior written approval of the Company. Any unauthorized alteration, forgery or falsification of the content or appearance of this document is unlawful and offenders may be prosecuted to the fullest extent of the law. Unless otherwise stated the results shown in this test report refer only to the sample(s) tested and such sample(s) are retained for 30 days only.

Attention: To check the authenticity of testing/inspection report & certificate, please contact us at telephone: (86-755) 8307 1443, or email: CN.Doccheck@sgs.com

South of No. 6 Plant, No. 1, Runsheng Road, Suzhou Industrial Park, Suzhou Area, China (Jiangsu) Pilot Free Trade Zone 215000
 中国·苏州·中国(江苏)自由贸易试验区苏州片区苏州工业园区润胜路1号的6号厂房南楼 邮编: 215000

t (86-512) 62992980 www.sgs.com.cn
 t (86-512) 62992980 sgs.china@sgs.com

Test Graphs

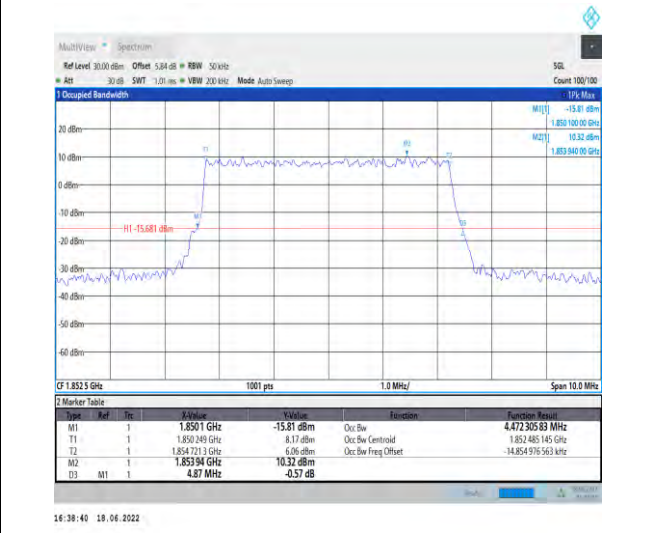


Unless otherwise agreed in writing, this document is issued by the Company subject to its General Conditions of Service printed overleaf, available on request or accessible at <http://www.sgs.com/en/Terms-and-Conditions.aspx> and, for electronic format documents, subject to Terms and Conditions for Electronic Documents at <http://www.sgs.com/en/Terms-and-Conditions/Terms-e-Documents.aspx>. Attention is drawn to the limitation of liability, indemnification and jurisdiction issues defined therein. Any holder of this document is advised that information contained hereon reflects the Company's findings at the time of its intervention only and within the limits of Client's instructions, if any. The Company's sole responsibility is to its Client and this document does not exonerate parties to a transaction from exercising all their rights and obligations under the transaction documents. This document cannot be reproduced except in full, without prior written approval of the Company. Any unauthorized alteration, forgery or falsification of the content or appearance of this document is unlawful and offenders may be prosecuted to the fullest extent of the law. Unless otherwise stated the results shown in this test report refer only to the sample(s) tested and such sample(s) are retained for 30 days only.
Attention: To check the authenticity of testing/inspection report & certificate, please contact us at telephone: (86-755) 83071443, or email: CN.Doccheck@sgs.com
 South of No. 6 Plant, No. 1, Pulinsheng Road, Suzhou Industrial Park, Suzhou Area, China (Jiangsu) Pilot Free Trade Zone 215000 t (86-512) 62992980 www.sgs.com.cn
 中国·苏州·中国(江苏)自由贸易试验区苏州片区苏州工业园区海陆路1号的6号厂房南座 邮编: 215000 t (86-512) 62992980 sgs.china@sgs.com



1-N25-PC3-15-5-L-5-DFT-256QAM-Outer_Full-25@0-Ant1-4.475-4.860-≤5-PASS

1-N25-PC3-15-5-L-6-CP-QPSK-Outer_Full-25@0-An t1-4.455-4.810-≤5-PASS



1-N25-PC3-15-5-L-7-CP-16QAM-Outer_Full-25@0-Ant1-4.471-4.850-≤5-PASS

1-N25-PC3-15-5-L-8-CP-64QAM-Outer_Full-25@0-Ant1-4.472-4.870-≤5-PASS





1-N25-PC3-15-5-L-9-CP-256QAM-Outer_Full-25@0-Ant1-4.464-4.890-≤5-PASS



1-N25-PC3-15-5-M-1-DFT-QPSK-Outer_Full-25@0-Ant1-4.465-4.830-≤5-PASS



1-N25-PC3-15-5-M-2-DFT-PI2BPSK-Outer_Full-25@0-Ant1-4.453-4.910-≤5-PASS



1-N25-PC3-15-5-M-3-DFT-16QAM-Outer_Full-25@0-Ant1-4.472-4.850-≤5-PASS

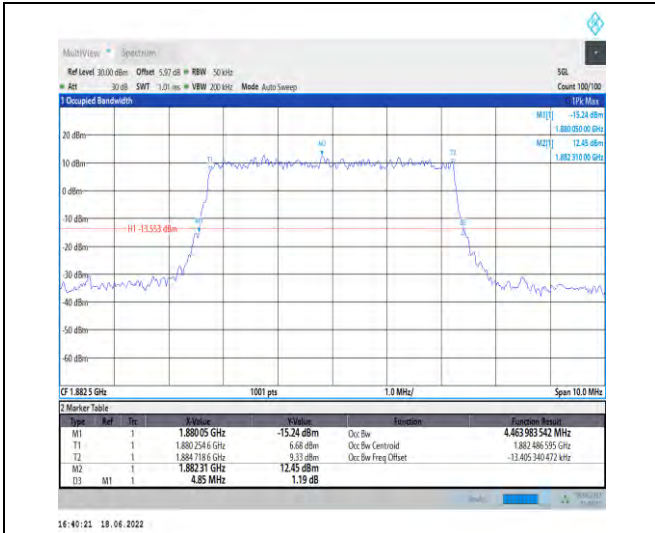


Unless otherwise agreed in writing, this document is issued by the Company subject to its General Conditions of Service printed overleaf, available on request or accessible at <http://www.sgs.com/en/Terms-and-Conditions.aspx> and, for electronic format documents, subject to Terms and Conditions for Electronic Documents at <http://www.sgs.com/en/Terms-and-Conditions/Terms-e-Documents.aspx>. Attention is drawn to the limitation of liability, indemnification and jurisdiction issues defined therein. Any holder of this document is advised that information contained hereon reflects the Company's findings at the time of its intervention only and within the limits of Client's instructions, if any. The Company's sole responsibility is to its Client and this document does not exonerate parties to a transaction from exercising all their rights and obligations under the transaction documents. This document cannot be reproduced except in full, without prior written approval of the Company. Any unauthorized alteration, forgery or falsification of the content or appearance of this document is unlawful and offenders may be prosecuted to the fullest extent of the law. Unless otherwise stated the results shown in this test report refer only to the sample(s) tested and such sample(s) are retained for 30 days only.

Attention: To check the authenticity of testing/inspection report & certificate, please contact us at telephone: (86-755) 83071443, or email: CN.Doccheck@sgs.com

South of No. 6 Plant, No. 1, Pulinsheng Road, Suzhou Industrial Park, Suzhou Area, China (Jiangsu) Pilot Free Trade Zone 215000
 中国·苏州·中国(江苏)自由贸易试验区苏州片区苏州工业园区海胜路1号的6号厂房南座 邮编: 215000

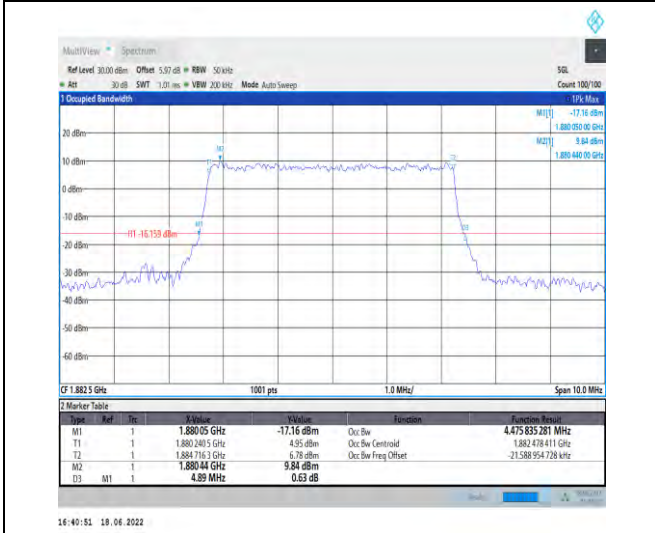
t (86-512) 62992980 www.sgs.com.cn
 t (86-512) 62992980 sgs.china@sgs.com



1-N25-PC3-15-5-M-4-DFT-64QAM-Outer_Full-25@0-Ant1-4.464-4.850-≤5-PASS



1-N25-PC3-15-5-M-5-DFT-256QAM-Outer_Full-25@0-Ant1-4.469-4.880-≤5-PASS



1-N25-PC3-15-5-M-6-CP-QPSK-Outer_Full-25@0-Ant1-4.476-4.890-≤5-PASS



1-N25-PC3-15-5-M-7-CP-16QAM-Outer_Full-25@0-Ant1-4.467-4.880-≤5-PASS

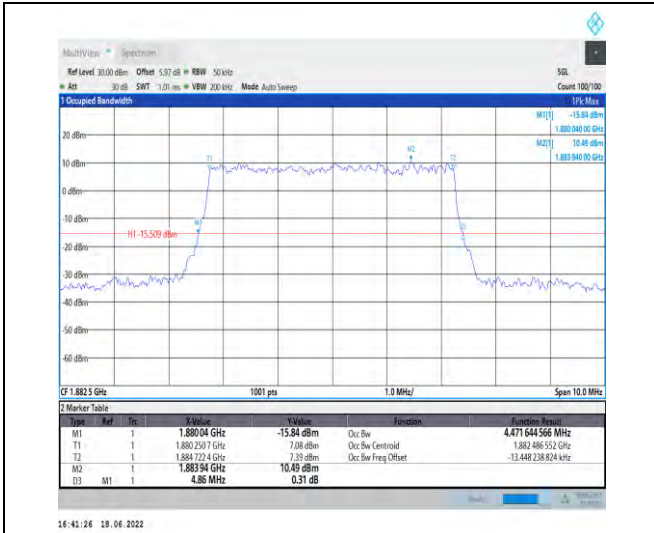


Unless otherwise agreed in writing, this document is issued by the Company subject to its General Conditions of Service printed overleaf, available on request or accessible at <http://www.sgs.com/en/Terms-and-Conditions.aspx> and, for electronic format documents, subject to Terms and Conditions for Electronic Documents at <http://www.sgs.com/en/Terms-and-Conditions/Terms-e-Documents.aspx>. Attention is drawn to the limitation of liability, indemnification and jurisdiction issues defined therein. Any holder of this document is advised that information contained hereon reflects the Company's findings at the time of its intervention only and within the limits of Client's instructions, if any. The Company's sole responsibility is to its Client and this document does not exonerate parties to a transaction from exercising all their rights and obligations under the transaction documents. This document cannot be reproduced except in full, without prior written approval of the Company. Any unauthorized alteration, forgery or falsification of the content or appearance of this document is unlawful and offenders may be prosecuted to the fullest extent of the law. Unless otherwise stated the results shown in this test report refer only to the sample(s) tested and such sample(s) are retained for 30 days only.

Attention: To check the authenticity of testing/inspection report & certificate, please contact us at telephone: (86-755) 8307 1443, or email: CN.Doccheck@sgs.com

South of No. 6 Plant, No. 1, Pulinsheng Road, Suzhou Industrial Park, Suzhou Area, China (Jiangsu) Pilot Free Trade Zone 215000
 中国·苏州·中国(江苏)自由贸易试验区苏州片区苏州工业园区海胜路1号的6号厂房南楼 邮编: 215000

t (86-512) 62992980 www.sgs.com.cn
 t (86-512) 62992980 sgs.china@sgs.com



1-N25-PC3-15-5-M-8-CP-64QAM-Outer_Full-25@0-Ant1-4.472-4.860-≤5-PASS

1-N25-PC3-15-5-M-9-CP-256QAM-Outer_Full-25@0-Ant1-4.471-4.970-≤5-PASS



1-N25-PC3-15-5-H-1-DFT-QPSK-Outer_Full-25@0-Ant1-4.481-4.870-≤5-PASS

1-N25-PC3-15-5-H-2-DFT-PI2BPSK-Outer_Full-25@0-Ant1-4.473-4.800-≤5-PASS



Unless otherwise agreed in writing, this document is issued by the Company subject to its General Conditions of Service printed overleaf, available on request or accessible at <http://www.sgs.com/en/Terms-and-Conditions.aspx> and, for electronic format documents, subject to Terms and Conditions for Electronic Documents at <http://www.sgs.com/en/Terms-and-Conditions/Terms-e-Documents.aspx>. Attention is drawn to the limitation of liability, indemnification and jurisdiction issues defined therein. Any holder of this document is advised that information contained hereon reflects the Company's findings at the time of its intervention only and within the limits of Client's instructions, if any. The Company's sole responsibility is to its Client and this document does not exonerate parties to a transaction from exercising all their rights and obligations under the transaction documents. This document cannot be reproduced except in full, without prior written approval of the Company. Any unauthorized alteration, forgery or falsification of the content or appearance of this document is unlawful and offenders may be prosecuted to the fullest extent of the law. Unless otherwise stated the results shown in this test report refer only to the sample(s) tested and such sample(s) are retained for 30 days only.

Attention: To check the authenticity of testing/inspection report & certificate, please contact us at telephone: (86-755) 8307 1443, or email: CN.Doccheck@sgs.com

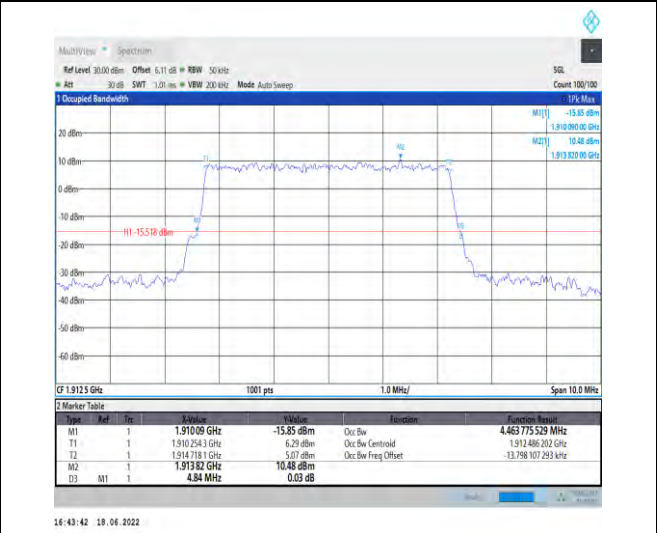
South of No. 6 Plant, No. 1, Pulinsheng Road, Suzhou Industrial Park, Suzhou Area, China (Jiangsu) Pilot Free Trade Zone 215000
 中国·苏州·中国(江苏)自由贸易试验区苏州片区苏州工业园区海胜路1号的6号厂房南座 邮编: 215000

t (86-512) 62992980 www.sgs.com.cn
 t (86-512) 62992980 sgs.china@sgs.com



1-N25-PC3-15-5-H-3-DFT-16QAM-Outer_Full-25@0
-Ant1-4.465-4.880-≤5-PASS

1-N25-PC3-15-5-H-4-DFT-64QAM-Outer_Full-25@0
-Ant1-4.469-4.930-≤5-PASS



1-N25-PC3-15-5-H-5-DFT-256QAM-Outer_Full-25@0
0-Ant1-4.462-4.950-≤5-PASS

1-N25-PC3-15-5-H-6-CP-QPSK-Outer_Full-25@0-A
nt1-4.464-4.840-≤5-PASS

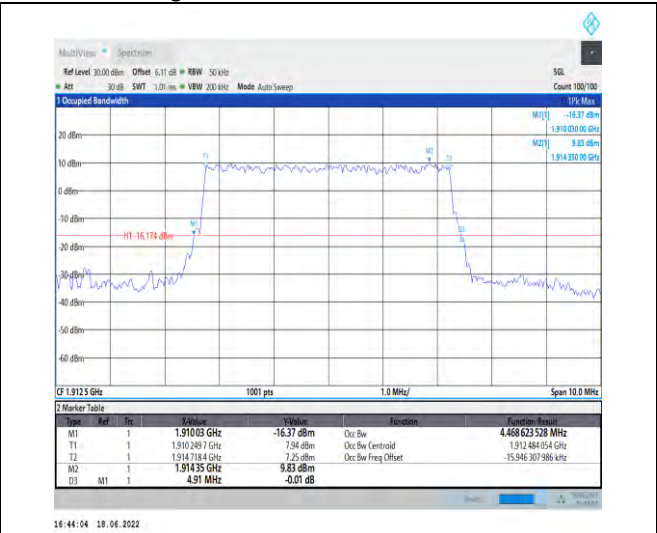
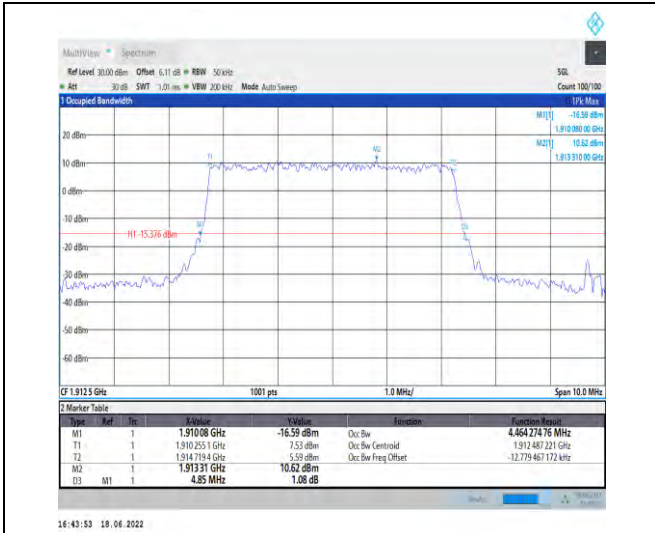


Unless otherwise agreed in writing, this document is issued by the Company subject to its General Conditions of Service printed overleaf, available on request or accessible at <http://www.sgs.com/en/Terms-and-Conditions.aspx> and, for electronic format documents, subject to Terms and Conditions for Electronic Documents at <http://www.sgs.com/en/Terms-and-Conditions/Terms-e-Documents.aspx>. Attention is drawn to the limitation of liability, indemnification and jurisdiction issues defined therein. Any holder of this document is advised that information contained hereon reflects the Company's findings at the time of its intervention only and within the limits of Client's instructions, if any. The Company's sole responsibility is to its Client and this document does not exonerate parties to a transaction from exercising all their rights and obligations under the transaction documents. This document cannot be reproduced except in full, without prior written approval of the Company. Any unauthorized alteration, forgery or falsification of the content or appearance of this document is unlawful and offenders may be prosecuted to the fullest extent of the law. Unless otherwise stated the results shown in this test report refer only to the sample(s) tested and such sample(s) are retained for 30 days only.

Attention: To check the authenticity of testing/inspection report & certificate, please contact us at telephone: (86-755) 83071443, or email: CN.Doccheck@sgs.com

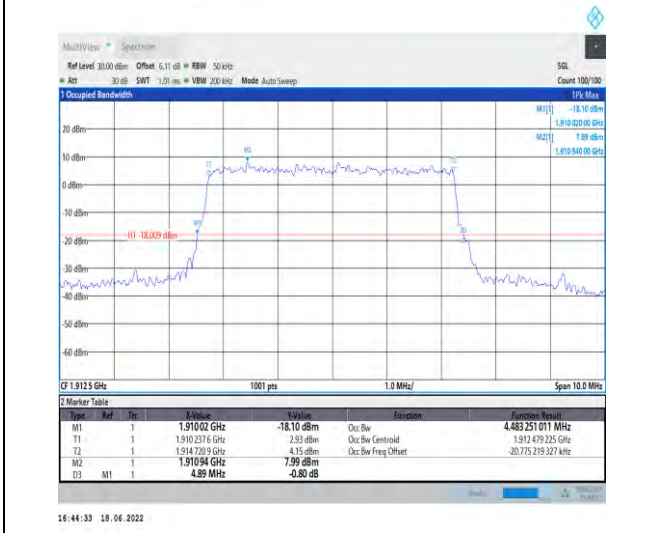
South of No. 6 Plant, No. 1, Pulinsheng Road, Suzhou Industrial Park, Suzhou Area, China (Jiangsu) Pilot Free Trade Zone 215000
中国·苏州·中国(江苏)自由贸易试验区苏州片区苏州工业园区海胜路1号的6号厂房南座 邮编: 215000

t (86-512) 62992980 www.sgs.com.cn
t (86-512) 62992980 sgs.china@sgs.com



1-N25-PC3-15-5-H-7-CP-16QAM-Outer_Full-25@0-Ant1-4.464-4.850-≤5-PASS

1-N25-PC3-15-5-H-8-CP-64QAM-Outer_Full-25@0-Ant1-4.469-4.910-≤5-PASS



1-N25-PC3-15-5-H-9-CP-256QAM-Outer_Full-25@0-Ant1-4.483-4.890-≤5-PASS

1-N25-PC3-15-10-L-1-DFT-QPSK-Outer_Full-50@0-Ant1-8.928-9.500-≤10-PASS

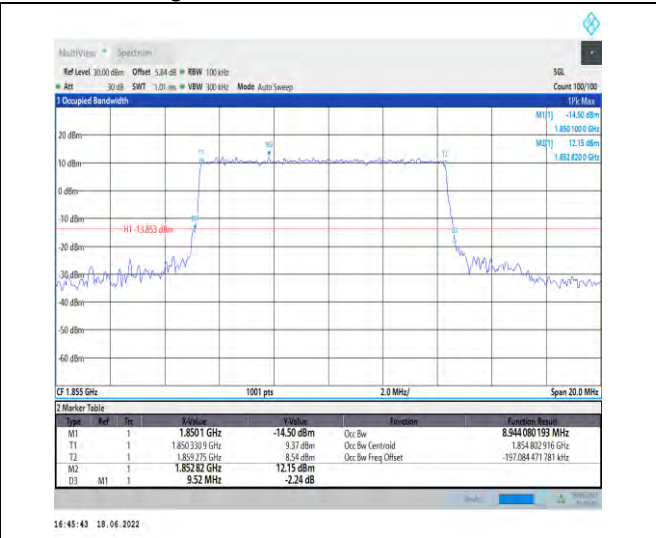


Unless otherwise agreed in writing, this document is issued by the Company subject to its General Conditions of Service printed overleaf, available on request or accessible at <http://www.sgs.com/en/Terms-and-Conditions.aspx> and, for electronic format documents, subject to Terms and Conditions for Electronic Documents at <http://www.sgs.com/en/Terms-and-Conditions/Terms-e-Documents.aspx>. Attention is drawn to the limitation of liability, indemnification and jurisdiction issues defined therein. Any holder of this document is advised that information contained hereon reflects the Company's findings at the time of its intervention only and within the limits of Client's instructions, if any. The Company's sole responsibility is to its Client and this document does not exonerate parties to a transaction from exercising all their rights and obligations under the transaction documents. This document cannot be reproduced except in full, without prior written approval of the Company. Any unauthorized alteration, forgery or falsification of the content or appearance of this document is unlawful and offenders may be prosecuted to the fullest extent of the law. Unless otherwise stated the results shown in this test report refer only to the sample(s) tested and such sample(s) are retained for 30 days only.

Attention: To check the authenticity of testing/inspection report & certificate, please contact us at telephone: (86-755) 8307 1443, or email: CN.Doccheck@sgs.com

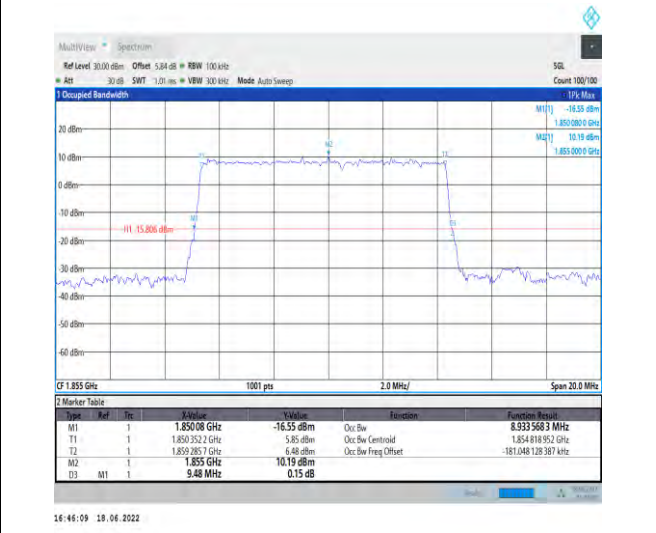
South of No. 6 Plant, No. 1, Pulinsheng Road, Suzhou Industrial Park, Suzhou Area, China (Jiangsu) Pilot Free Trade Zone 215000
 中国·苏州·中国(江苏)自由贸易试验区苏州片区苏州工业园区海胜路1号的6号厂房南座 邮编: 215000

t (86-512) 62992980 www.sgs.com.cn
 t (86-512) 62992980 sgs.china@sgs.com



1-N25-PC3-15-10-L-2-DFT-PI2BPSK-Outer_Full-50 @0-Ant1-8.924-9.520-≤10-PASS

1-N25-PC3-15-10-L-3-DFT-16QAM-Outer_Full-50 @0-Ant1-8.944-9.520-≤10-PASS



1-N25-PC3-15-10-L-4-DFT-64QAM-Outer_Full-50 @0-Ant1-8.921-9.440-≤10-PASS

1-N25-PC3-15-10-L-5-DFT-256QAM-Outer_Full-50 @0-Ant1-8.934-9.480-≤10-PASS



Unless otherwise agreed in writing, this document is issued by the Company subject to its General Conditions of Service printed overleaf, available on request or accessible at <http://www.sgs.com/en/Terms-and-Conditions.aspx> and, for electronic format documents, subject to Terms and Conditions for Electronic Documents at <http://www.sgs.com/en/Terms-and-Conditions/Terms-e-Documents.aspx>. Attention is drawn to the limitation of liability, indemnification and jurisdiction issues defined therein. Any holder of this document is advised that information contained hereon reflects the Company's findings at the time of its intervention only and within the limits of Client's instructions, if any. The Company's sole responsibility is to its Client and this document does not exonerate parties to a transaction from exercising all their rights and obligations under the transaction documents. This document cannot be reproduced except in full, without prior written approval of the Company. Any unauthorized alteration, forgery or falsification of the content or appearance of this document is unlawful and offenders may be prosecuted to the fullest extent of the law. Unless otherwise stated the results shown in this test report refer only to the sample(s) tested and such sample(s) are retained for 30 days only.

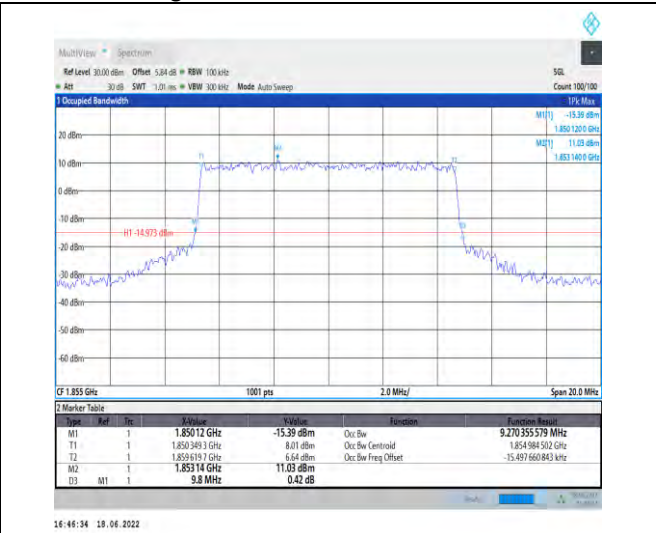
Attention: To check the authenticity of testing/inspection report & certificate, please contact us at telephone: (86-755) 8307 1443, or email: CN.Doccheck@sgs.com

South of No. 6 Plant, No. 1, Pulinsheng Road, Suzhou Industrial Park, Suzhou Area, China (Jiangsu) Pilot Free Trade Zone 215000
 中国·苏州·中国(江苏)自由贸易试验区苏州片区苏州工业园区海陵路1号的6号厂房南楼 邮编: 215000

t (86-512) 62992980 www.sgs.com.cn
 t (86-512) 62992980 sgs.china@sgs.com



1-N25-PC3-15-10-L-6-CP-QPSK-Outer_Full-52@0-A
nt1-9.303-9.860-≤10-PASS



1-N25-PC3-15-10-L-7-CP-16QAM-Outer_Full-52@0-
Ant1-9.27-9.800-≤10-PASS



1-N25-PC3-15-10-L-8-CP-64QAM-Outer_Full-52@0-
Ant1-9.277-9.880-≤10-PASS



1-N25-PC3-15-10-L-9-CP-256QAM-Outer_Full-52@0-
Ant1-9.291-9.860-≤10-PASS



Unless otherwise agreed in writing, this document is issued by the Company subject to its General Conditions of Service printed overleaf, available on request or accessible at <http://www.sgs.com/en/Terms-and-Conditions.aspx> and, for electronic format documents, subject to Terms and Conditions for Electronic Documents at <http://www.sgs.com/en/Terms-and-Conditions/Terms-e-Documents.aspx>. Attention is drawn to the limitation of liability, indemnification and jurisdiction issues defined therein. Any holder of this document is advised that information contained hereon reflects the Company's findings at the time of its intervention only and within the limits of Client's instructions, if any. The Company's sole responsibility is to its Client and this document does not exonerate parties to a transaction from exercising all their rights and obligations under the transaction documents. This document cannot be reproduced except in full, without prior written approval of the Company. Any unauthorized alteration, forgery or falsification of the content or appearance of this document is unlawful and offenders may be prosecuted to the fullest extent of the law. Unless otherwise stated the results shown in this test report refer only to the sample(s) tested and such sample(s) are retained for 30 days only.
Attention: To check the authenticity of testing/inspection report & certificate, please contact us at telephone: (86-755) 8307 1443, or email: CN.Doccheck@sgs.com

South of No. 6 Plant, No. 1, Pulinsheng Road, Suzhou Industrial Park, Suzhou Area, China (Jiangsu) Pilot Free Trade Zone 215000
中国·苏州·中国(江苏)自由贸易试验区苏州片区苏州工业园区海胜路1号的6号厂房南座 邮编: 215000

t (86-512) 62992980 www.sgs.com.cn
t (86-512) 62992980 sgs.china@sgs.com



1-N25-PC3-15-10-M-1-DFT-QPSK-Outer_Full-50@0
-Ant1-8.918-9.480-≤10-PASS



1-N25-PC3-15-10-M-2-DFT-PI2BPSK-Outer_Full-50@0-Ant1-8.914-9.540-≤10-PASS



1-N25-PC3-15-10-M-3-DFT-16QAM-Outer_Full-50@0-Ant1-8.942-9.500-≤10-PASS



1-N25-PC3-15-10-M-4-DFT-64QAM-Outer_Full-50@0-Ant1-8.92-9.540-≤10-PASS



Unless otherwise agreed in writing, this document is issued by the Company subject to its General Conditions of Service printed overleaf, available on request or accessible at <http://www.sgs.com/en/Terms-and-Conditions.aspx> and, for electronic format documents, subject to Terms and Conditions for Electronic Documents at <http://www.sgs.com/en/Terms-and-Conditions/Terms-e-Documents.aspx>. Attention is drawn to the limitation of liability, indemnification and jurisdiction issues defined therein. Any holder of this document is advised that information contained hereon reflects the Company's findings at the time of its intervention only and within the limits of Client's instructions, if any. The Company's sole responsibility is to its Client and this document does not exonerate parties to a transaction from exercising all their rights and obligations under the transaction documents. This document cannot be reproduced except in full, without prior written approval of the Company. Any unauthorized alteration, forgery or falsification of the content or appearance of this document is unlawful and offenders may be prosecuted to the fullest extent of the law. Unless otherwise stated the results shown in this test report refer only to the sample(s) tested and such sample(s) are retained for 30 days only.
Attention: To check the authenticity of testing/inspection report & certificate, please contact us at telephone: (86-755) 83071443, or email: CN.Doccheck@sgs.com

South of No. 6 Plant, No. 1, Pulinsheng Road, Suzhou Industrial Park, Suzhou Area, China (Jiangsu) Pilot Free Trade Zone 215000
中国·苏州·中国(江苏)自由贸易试验区苏州片区苏州工业园区海胜路1号的6号厂房南座 邮编: 215000

t (86-512) 62992980 www.sgs.com.cn
t (86-512) 62992980 sgs.china@sgs.com



1-N25-PC3-15-10-M-5-DFT-256QAM-Outer_Full-50@0-Ant1-8.937-9.540-≤10-PASS

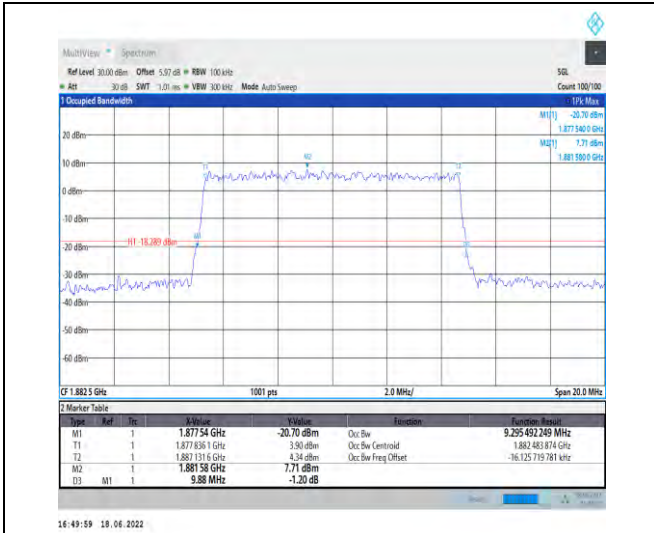
1-N25-PC3-15-10-M-6-CP-QPSK-Outer_Full-52@0-Ant1-9.285-10.020-≤10-PASS



1-N25-PC3-15-10-M-7-CP-16QAM-Outer_Full-52@0-Ant1-9.28-9.760-≤10-PASS

1-N25-PC3-15-10-M-8-CP-64QAM-Outer_Full-52@0-Ant1-9.283-9.920-≤10-PASS





1-N25-PC3-15-10-M-9-CP-256QAM-Outer_Full-52@
0-Ant1-9.295-9.880-≤10-PASS



1-N25-PC3-15-10-H-1-DFT-QPSK-Outer_Full-50@0-
Ant1-8.929-9.420-≤10-PASS



1-N25-PC3-15-10-H-2-DFT-PI2BPSK-Outer_Full-50
@0-Ant1-8.93-9.480-≤10-PASS



1-N25-PC3-15-10-H-3-DFT-16QAM-Outer_Full-50@
0-Ant1-8.93-9.520-≤10-PASS



Unless otherwise agreed in writing, this document is issued by the Company subject to its General Conditions of Service printed overleaf, available on request or accessible at <http://www.sgs.com/en/Terms-and-Conditions.aspx> and, for electronic format documents, subject to Terms and Conditions for Electronic Documents at <http://www.sgs.com/en/Terms-and-Conditions/Terms-e-Documents.aspx>. Attention is drawn to the limitation of liability, indemnification and jurisdiction issues defined therein. Any holder of this document is advised that information contained hereon reflects the Company's findings at the time of its intervention only and within the limits of Client's instructions, if any. The Company's sole responsibility is to its Client and this document does not exonerate parties to a transaction from exercising all their rights and obligations under the transaction documents. This document cannot be reproduced except in full, without prior written approval of the Company. Any unauthorized alteration, forgery or falsification of the content or appearance of this document is unlawful and offenders may be prosecuted to the fullest extent of the law. Unless otherwise stated the results shown in this test report refer only to the sample(s) tested and such sample(s) are retained for 30 days only.

Attention: To check the authenticity of testing/inspection report & certificate, please contact us at telephone: (86-755) 8307 1443, or email: CN.Doccheck@sgs.com

South of No. 6 Plant, No. 1, Pulinsheng Road, Suzhou Industrial Park, Suzhou Area, China (Jiangsu) Pilot Free Trade Zone 215000
中国·苏州·中国(江苏)自由贸易试验区苏州片区苏州工业园区海陵路1号的6号厂房南座 邮编: 215000

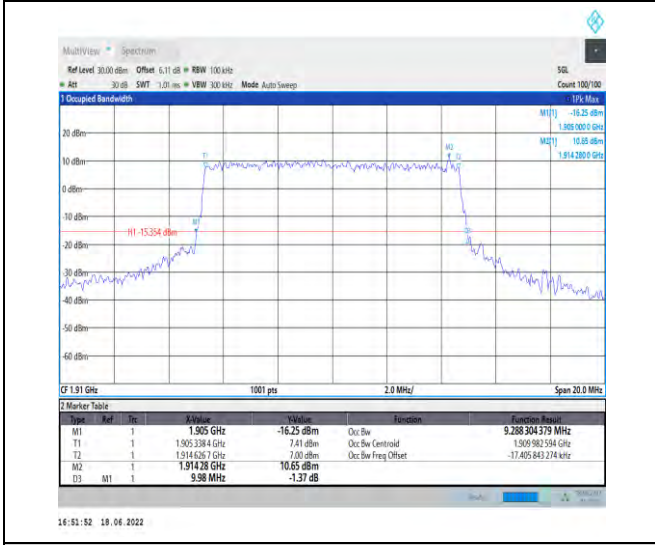
t (86-512) 62992980 www.sgs.com.cn
t (86-512) 62992980 sgs.china@sgs.com



1-N25-PC3-15-10-H-4-DFT-64QAM-Outer_Full-50@
 0-Ant1-8.933-9.540-≤10-PASS



1-N25-PC3-15-10-H-5-DFT-256QAM-Outer_Full-50@
 0-Ant1-8.94-9.520-≤10-PASS

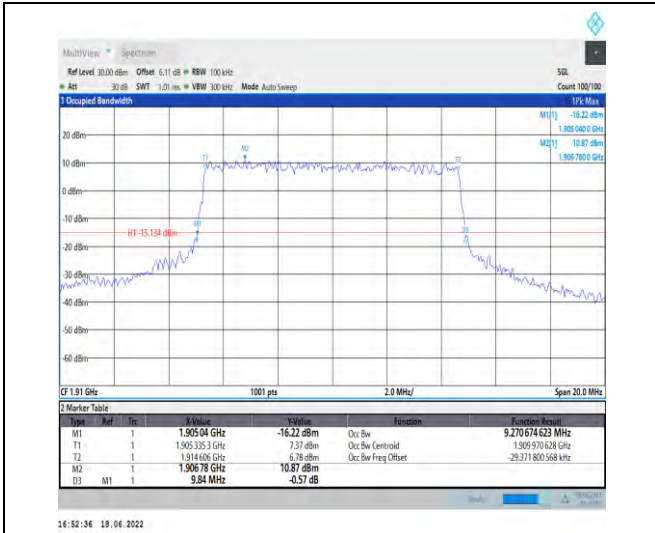


1-N25-PC3-15-10-H-6-CP-QPSK-Outer_Full-52@0-
 Ant1-9.288-9.980-≤10-PASS



1-N25-PC3-15-10-H-7-CP-16QAM-Outer_Full-52@0-
 Ant1-9.267-9.760-≤10-PASS

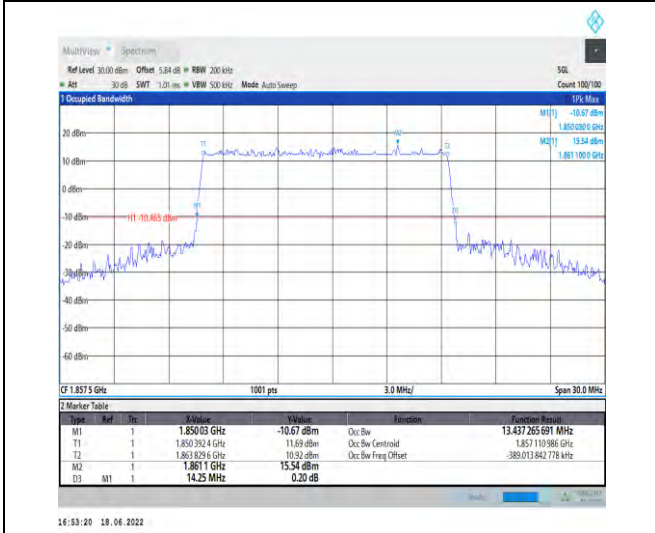




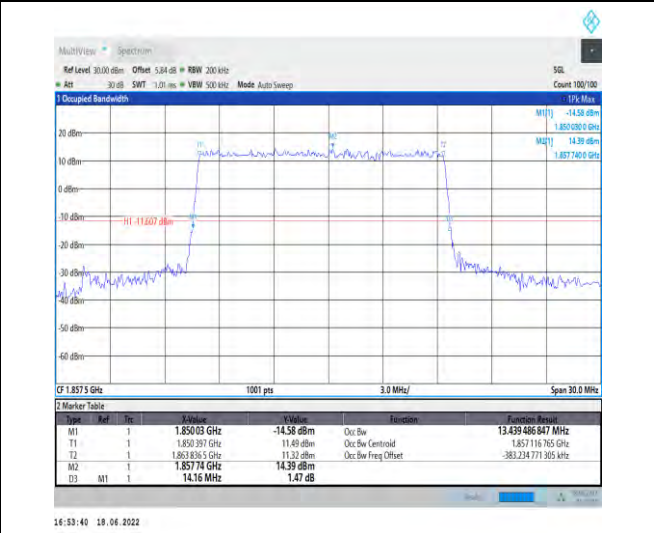
1-N25-PC3-15-10-H-8-CP-64QAM-Outer_Full-52@0
-Ant1-9.271-9.840-≤10-PASS



1-N25-PC3-15-10-H-9-CP-256QAM-Outer_Full-52@0
-Ant1-9.274-9.940-≤10-PASS



1-N25-PC3-15-15-L-1-DFT-QPSK-Outer_Full-75@0-
Ant1-13.437-14.250-≤15-PASS



1-N25-PC3-15-15-L-2-DFT-PI2BPSK-Outer_Full-75@0-
Ant1-13.439-14.160-≤15-PASS



Unless otherwise agreed in writing, this document is issued by the Company subject to its General Conditions of Service printed overleaf, available on request or accessible at <http://www.sgs.com/en/Terms-and-Conditions.aspx> and, for electronic format documents, subject to Terms and Conditions for Electronic Documents at <http://www.sgs.com/en/Terms-and-Conditions/Terms-e-Documents.aspx>. Attention is drawn to the limitation of liability, indemnification and jurisdiction issues defined therein. Any holder of this document is advised that information contained hereon reflects the Company's findings at the time of its intervention only and within the limits of Client's instructions, if any. The Company's sole responsibility is to its Client and this document does not exonerate parties to a transaction from exercising all their rights and obligations under the transaction documents. This document cannot be reproduced except in full, without prior written approval of the Company. Any unauthorized alteration, forgery or falsification of the content or appearance of this document is unlawful and offenders may be prosecuted to the fullest extent of the law. Unless otherwise stated the results shown in this test report refer only to the sample(s) tested and such sample(s) are retained for 30 days only.

Attention: To check the authenticity of testing/inspection report & certificate, please contact us at telephone: (86-755) 83071443, or email: CN.Doccheck@sgs.com

South of No. 6 Plant, No. 1, Pulinsheng Road, Suzhou Industrial Park, Suzhou Area, China (Jiangsu) Pilot Free Trade Zone 215000
中国·苏州·中国(江苏)自由贸易试验区苏州片区苏州工业园区海胜路1号的6号厂房南座 邮编: 215000

t (86-512) 62992980 www.sgs.com.cn
t (86-512) 62992980 sgs.china@sgs.com



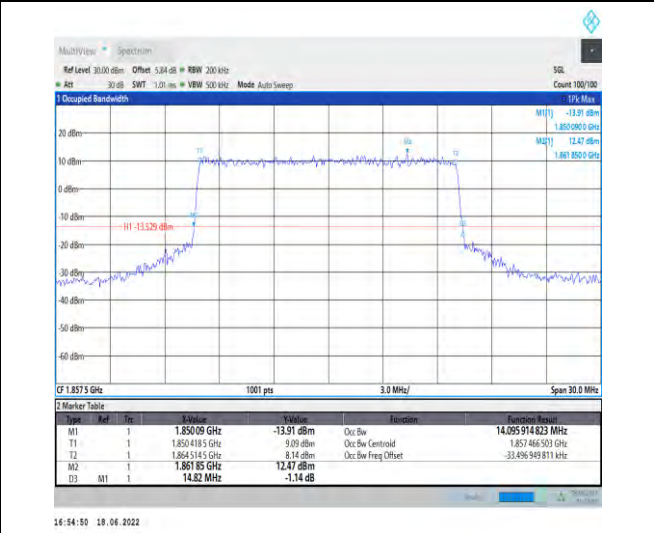
1-N25-PC3-15-15-L-3-DFT-16QAM-Outer_Full-75@
 0-Ant1-13.437-14.370-≤15-PASS



1-N25-PC3-15-15-L-4-DFT-64QAM-Outer_Full-75@
 0-Ant1-13.426-14.220-≤15-PASS



1-N25-PC3-15-15-L-5-DFT-256QAM-Outer_Full-75
 @0-Ant1-13.403-14.340-≤15-PASS



1-N25-PC3-15-15-L-6-CP-QPSK-Outer_Full-79@0-A
 nt1-14.096-14.820-≤15-PASS



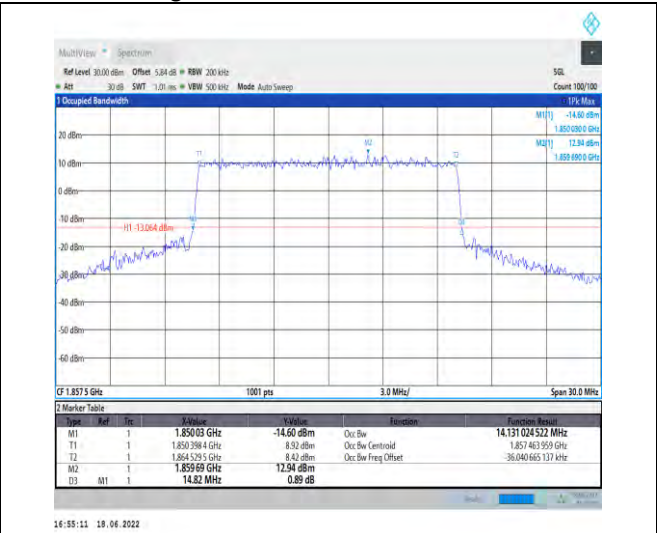
Unless otherwise agreed in writing, this document is issued by the Company subject to its General Conditions of Service printed overleaf, available on request or accessible at <http://www.sgs.com/en/Terms-and-Conditions.aspx> and, for electronic format documents, subject to Terms and Conditions for Electronic Documents at <http://www.sgs.com/en/Terms-and-Conditions/Terms-e-Documents.aspx>. Attention is drawn to the limitation of liability, indemnification and jurisdiction issues defined therein. Any holder of this document is advised that information contained hereon reflects the Company's findings at the time of its intervention only and within the limits of Client's instructions, if any. The Company's sole responsibility is to its Client and this document does not exonerate parties to a transaction from exercising all their rights and obligations under the transaction documents. This document cannot be reproduced except in full, without prior written approval of the Company. Any unauthorized alteration, forgery or falsification of the content or appearance of this document is unlawful and offenders may be prosecuted to the fullest extent of the law. Unless otherwise stated the results shown in this test report refer only to the sample(s) tested and such sample(s) are retained for 30 days only.
Attention: To check the authenticity of testing/inspection report & certificate, please contact us at telephone: (86-755) 8307 1443, or email: CN.Doccheck@sgs.com

South of No. 6 Plant, No. 1, Pulinsheng Road, Suzhou Industrial Park, Suzhou Area, China (Jiangsu) Pilot Free Trade Zone 215000
 中国·苏州·中国(江苏)自由贸易试验区苏州片区苏州工业园区海陆路1号的6号厂房南座 邮编: 215000

t (86-512) 62992980 www.sgs.com.cn
 t (86-512) 62992980 sgs.china@sgs.com



1-N25-PC3-15-15-L-7-CP-16QAM-Outer_Full-79@0-Ant1-14.092-14.850-≤15-PASS



1-N25-PC3-15-15-L-8-CP-64QAM-Outer_Full-79@0-Ant1-14.131-14.820-≤15-PASS



1-N25-PC3-15-15-L-9-CP-256QAM-Outer_Full-79@0-Ant1-14.153-14.940-≤15-PASS



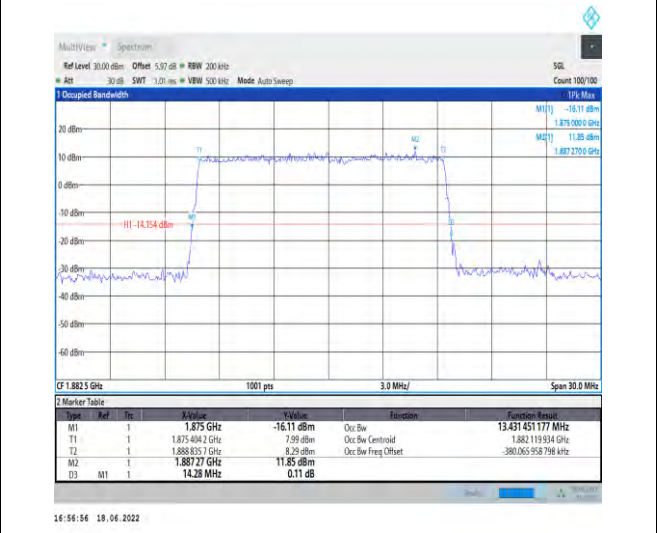
1-N25-PC3-15-15-M-1-DFT-QPSK-Outer_Full-75@0-Ant1-13.497-14.250-≤15-PASS





1-N25-PC3-15-15-M-2-DFT-PI2BPSK-Outer_Full-75 @0-Ant1-13.436-14.130-≤15-PASS

1-N25-PC3-15-15-M-3-DFT-16QAM-Outer_Full-75 @0-Ant1-13.433-14.280-≤15-PASS



1-N25-PC3-15-15-M-4-DFT-64QAM-Outer_Full-75 @0-Ant1-13.418-14.130-≤15-PASS

1-N25-PC3-15-15-M-5-DFT-256QAM-Outer_Full-75 @0-Ant1-13.431-14.280-≤15-PASS

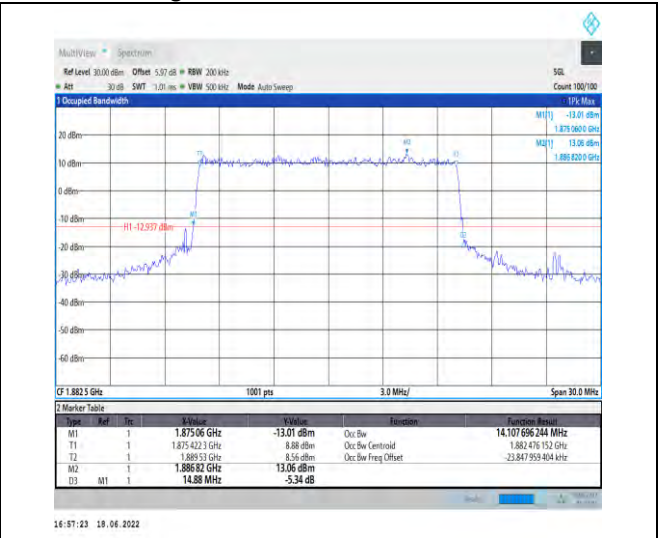


Unless otherwise agreed in writing, this document is issued by the Company subject to its General Conditions of Service printed overleaf, available on request or accessible at <http://www.sgs.com/en/Terms-and-Conditions.aspx> and, for electronic format documents, subject to Terms and Conditions for Electronic Documents at <http://www.sgs.com/en/Terms-and-Conditions/Terms-e-Documents.aspx>. Attention is drawn to the limitation of liability, indemnification and jurisdiction issues defined therein. Any holder of this document is advised that information contained hereon reflects the Company's findings at the time of its intervention only and within the limits of Client's instructions, if any. The Company's sole responsibility is to its Client and this document does not exonerate parties to a transaction from exercising all their rights and obligations under the transaction documents. This document cannot be reproduced except in full, without prior written approval of the Company. Any unauthorized alteration, forgery or falsification of the content or appearance of this document is unlawful and offenders may be prosecuted to the fullest extent of the law. Unless otherwise stated the results shown in this test report refer only to the sample(s) tested and such sample(s) are retained for 30 days only.

Attention: To check the authenticity of testing/inspection report & certificate, please contact us at telephone: (86-755) 83071443, or email: CN.Doccheck@sgs.com

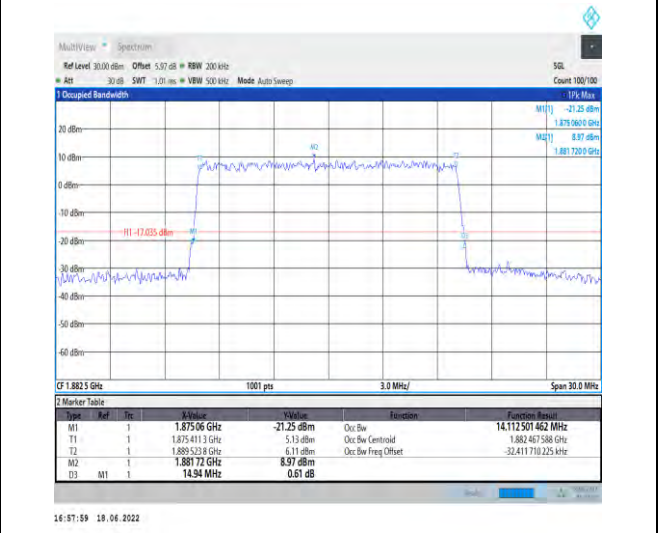
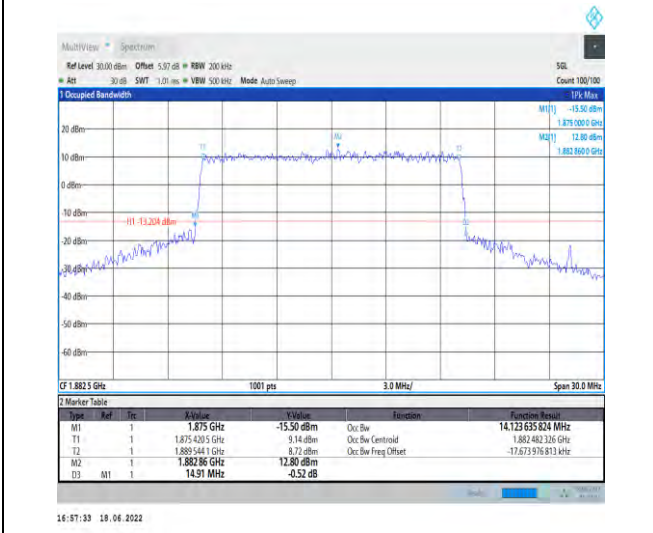
South of No. 6 Plant, No. 1, Pulinsheng Road, Suzhou Industrial Park, Suzhou Area, China (Jiangsu) Pilot Free Trade Zone 215000
 中国·苏州·中国(江苏)自由贸易试验区苏州片区苏州工业园区海胜路1号的6号厂房南座 邮编: 215000

t (86-512) 62992980 www.sgs.com.cn
 t (86-512) 62992980 sgs.china@sgs.com



1-N25-PC3-15-15-M-6-CP-QPSK-Outer_Full-79@0-Ant1-14.107-14.910-≤15-PASS

1-N25-PC3-15-15-M-7-CP-16QAM-Outer_Full-79@0-Ant1-14.108-14.880-≤15-PASS



1-N25-PC3-15-15-M-8-CP-64QAM-Outer_Full-79@0-Ant1-14.124-14.910-≤15-PASS

1-N25-PC3-15-15-M-9-CP-256QAM-Outer_Full-79@0-Ant1-14.113-14.940-≤15-PASS



Unless otherwise agreed in writing, this document is issued by the Company subject to its General Conditions of Service printed overleaf, available on request or accessible at <http://www.sgs.com/en/Terms-and-Conditions.aspx> and, for electronic format documents, subject to Terms and Conditions for Electronic Documents at <http://www.sgs.com/en/Terms-and-Conditions/Terms-e-Documents.aspx>. Attention is drawn to the limitation of liability, indemnification and jurisdiction issues defined therein. Any holder of this document is advised that information contained hereon reflects the Company's findings at the time of its intervention only and within the limits of Client's instructions, if any. The Company's sole responsibility is to its Client and this document does not exonerate parties to a transaction from exercising all their rights and obligations under the transaction documents. This document cannot be reproduced except in full, without prior written approval of the Company. Any unauthorized alteration, forgery or falsification of the content or appearance of this document is unlawful and offenders may be prosecuted to the fullest extent of the law. Unless otherwise stated the results shown in this test report refer only to the sample(s) tested and such sample(s) are retained for 30 days only.

Attention: To check the authenticity of testing/inspection report & certificate, please contact us at telephone: (86-755) 83071443, or email: CN.Doccheck@sgs.com

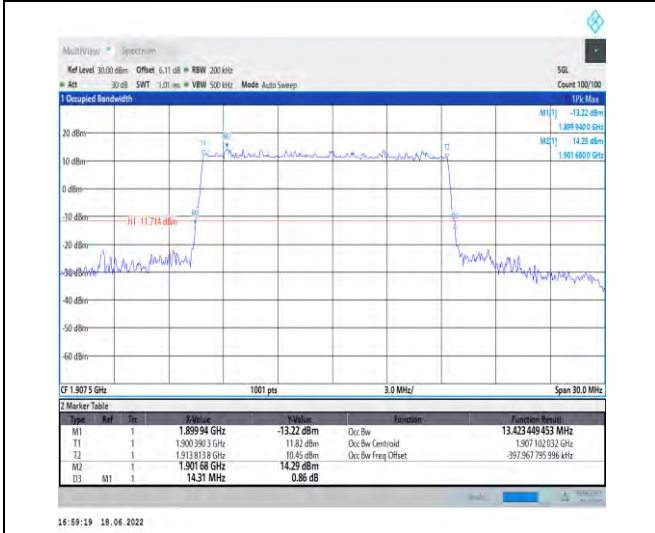
South of No. 6 Plant, No. 1, Pulinsheng Road, Suzhou Industrial Park, Suzhou Area, China (Jiangsu) Pilot Free Trade Zone 215000 t (86-512) 62992980 www.sgs.com.cn
 中国·苏州·中国(江苏)自由贸易试验区苏州片区苏州工业园区海陵路1号的6号厂房南楼 邮编: 215000 t (86-512) 62992980 sgs.china@sgs.com



1-N25-PC3-15-15-H-1-DFT-QPSK-Outer_Full-75@0-Ant1-13.434-14.130-≤15-PASS



1-N25-PC3-15-15-H-2-DFT-PI2BPSK-Outer_Full-75@0-Ant1-13.439-14.250-≤15-PASS



1-N25-PC3-15-15-H-3-DFT-16QAM-Outer_Full-75@0-Ant1-13.423-14.310-≤15-PASS



1-N25-PC3-15-15-H-4-DFT-64QAM-Outer_Full-75@0-Ant1-13.405-14.250-≤15-PASS



Unless otherwise agreed in writing, this document is issued by the Company subject to its General Conditions of Service printed overleaf, available on request or accessible at <http://www.sgs.com/en/Terms-and-Conditions.aspx> and, for electronic format documents, subject to Terms and Conditions for Electronic Documents at <http://www.sgs.com/en/Terms-and-Conditions/Terms-e-Documents.aspx>. Attention is drawn to the limitation of liability, indemnification and jurisdiction issues defined therein. Any holder of this document is advised that information contained hereon reflects the Company's findings at the time of its intervention only and within the limits of Client's instructions, if any. The Company's sole responsibility is to its Client and this document does not exonerate parties to a transaction from exercising all their rights and obligations under the transaction documents. This document cannot be reproduced except in full, without prior written approval of the Company. Any unauthorized alteration, forgery or falsification of the content or appearance of this document is unlawful and offenders may be prosecuted to the fullest extent of the law. Unless otherwise stated the results shown in this test report refer only to the sample(s) tested and such sample(s) are retained for 30 days only.

Attention: To check the authenticity of testing/inspection report & certificate, please contact us at telephone: (86-755) 83071443, or email: CN.Doccheck@sgs.com

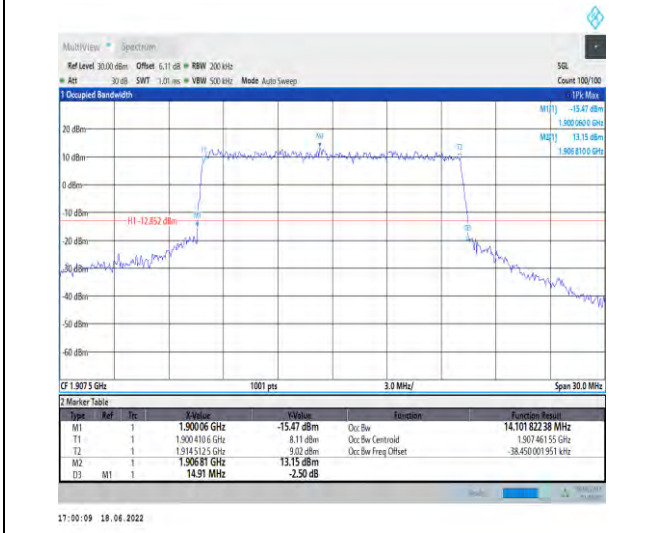
South of No. 6 Plant, No. 1, Pulinsheng Road, Suzhou Industrial Park, Suzhou Area, China (Jiangsu) Pilot Free Trade Zone 215000
 中国·苏州·中国(江苏)自由贸易试验区苏州片区苏州工业园区海胜路1号的6号厂房南座 邮编: 215000

t (86-512) 62992980 www.sgs.com.cn
 t (86-512) 62992980 sgs.china@sgs.com



1-N25-PC3-15-15-H-5-DFT-256QAM-Outer_Full-75 @0-Ant1-13.416-14.220-≤15-PASS

1-N25-PC3-15-15-H-6-CP-QPSK-Outer_Full-79@0-Ant1-14.129-14.940-≤15-PASS



1-N25-PC3-15-15-H-7-CP-16QAM-Outer_Full-79@0 -Ant1-14.102-14.910-≤15-PASS

1-N25-PC3-15-15-H-8-CP-64QAM-Outer_Full-79@0 -Ant1-14.117-14.880-≤15-PASS

