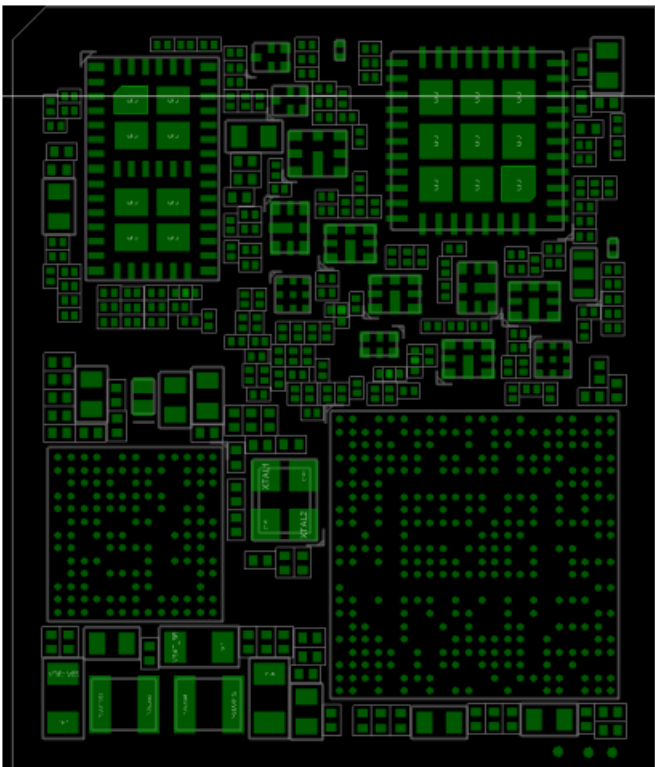


Test Data Reuse Letter

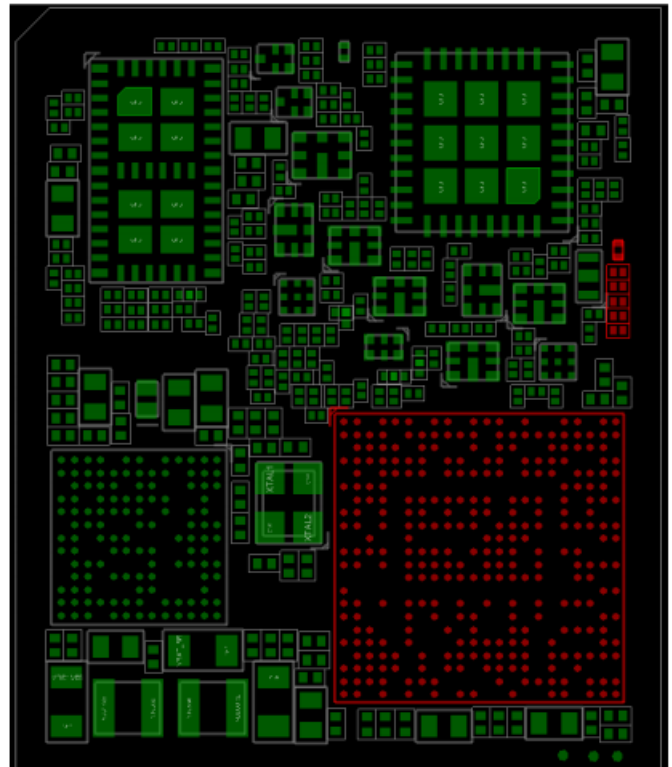
This application is intended to reuse previous test data (from FCC ID: XMR202111EG915ULA, certified on 12/02/2021 of initial application), due to the fact that the two models of products are hardware-wise identical and only the following changes have been made:

FCC ID: XMR202210EG915ULA, FCC ID: XMR202111EG915ULA, two versions of FDD IDs share the same software and hardware design. They both support CAT1. One version of EG915U-LA supports Bluetooth, Wi-Fi Scan functions, the other version doesn't support it. And all the others are the same.

New version of EG915U-LA, FCC ID: XMR202210EG915ULA just Change BB chip from UIS8910DM to UIS8910DM-C1, and delete Bluetooth and Wi-Fi Scan related components, as below picture shows.



**EG915U-LA
(Original)**



**EG915U-LA
(New)**

Verification test items with 1 sample:

- Conducted Power
- Conducted Band Edge & Spurious Emission

please refers to included exhibit "Test Reports.pdf" for detail

Reuse data test items

- Conducted Power / EIRP/ ERP / PAPR / OBW / Modulation characteristics / Frequency stability
- Radiated Emission

Also, both the referenced application and this new application are all subject to the same FCC rule and there is no new rule update for related rules. Accordingly, we believe that the reuse data from previous certified filing is justifiable. Thank you for your attention and please feel free to contact us, if you should have any questions. Sincerely yours,



Jean Hu

Quectel Wireless Solutions Company Limited.

TEL: +86-21-51086236 ext 6511