

Test Data Reuse Letter

This application is intended to reuse previous test data (from **EC25-AF**, FCC ID: XMR201808EC25AF 2018/08/03 initial application), due to the fact that the two models of products are hardware-wise identical and only the following changes have been made:

EC25-AFDL (FCC ID: XMR2021EC25AFDL) is the variant of certified **EC25-AF** module

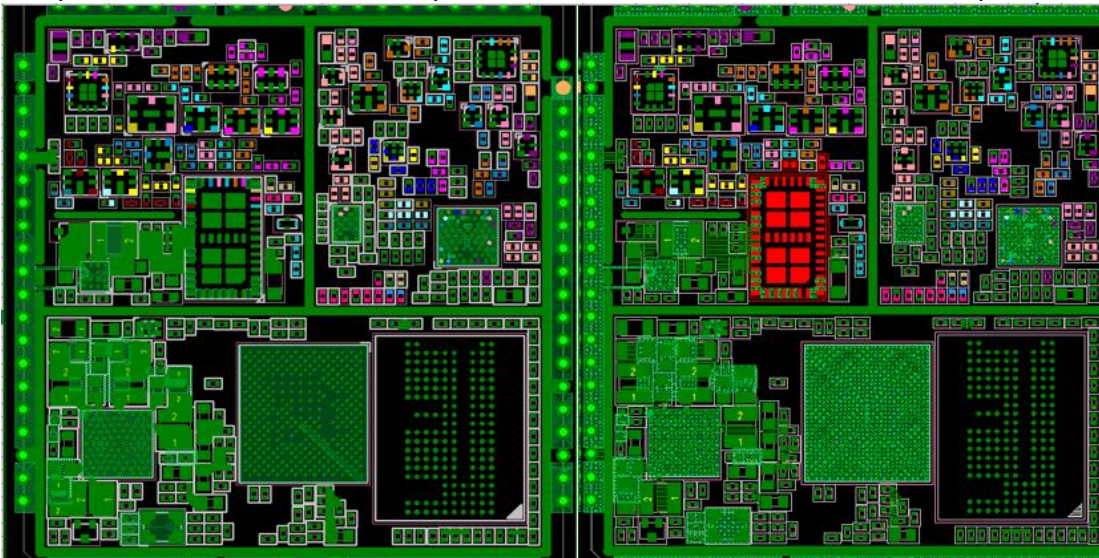
EC25-AF and **EC25-AFDL** are all LTE modules. the differences are just as follow:

1. The platform of **EC25-AF** is MDM9207, **EC25-AFDL** is MDM9307. They use the series chipset. For details, you can check Qualcomm's statement.
2. **EC25-AF** supports LTE and WCDMA. **EC25-AFDL** supports LTE only. The main change of software is disabled WCDMA and voice part.
3. The PA of **EC25-AF** is QM56020, **EC25-AFDL** is QM56030

Main RF components changes as follow table

Designator	EC25-AF	EC25-AFDL	Notes
L0920	NM	CAP C0G 1.0pF +/- 0.1pF 50V CH0201 RO	Capacitor
L0954	NM	CAP C0G 2.0pF +/- 0.1pF 50V CH0201 RO	Capacitor
U1001	QM56020	QM56030	PA

The position of the different components in the PCB is shown in the follow picture



So, we have performed spot checks on the following items to verify that if any unexpected RF conducted power or emission changes can be noted. The test results show that all spot check data are within the instrument measurement uncertainty and data reuse is justifiable.

Quectel Wireless Solutions Company Limited
Building 5, Shanghai Business Park Phase III (Area B), No.1016
Tianlin Road, Minhang District, Shanghai, China 200233



Verification test items with 1 sample:

- Conducted Power
- Conducted, Radiated Spurious Emission Test (choose worse case) For the test result please refers to included exhibit "Test Reports.pdf" for detail

Reuse data test items

- Conducted Power / EIRP/ ERP / PAPR / OBW / Modulation characteristics / Frequency stability
- Band edge

Also, both the referenced application and this new application are all subject to the same ISED rule and there is no new rule update for related rules. Accordingly, we believe that the reuse data from previous certified filing is justifiable. Thank you for your attention and please feel free to contact us, if you should have any questions.

Sincerely yours,

A handwritten signature in black ink that reads "Jean Hu". The signature is written in a cursive, flowing style.

Jean Hu

Quectel Wireless Solutions Company Limited.

TEL: +86-21-51086236 ext 6511