

Statement

We Quectel Wireless Solutions Co., Ltd declare the following models.

Product Name: LTE Module

Model Number: EM160R-GL, EM120R-GL(Variant)

Hardware Version: R1.0

EM160R-GL and EM120R-GL support the same bands, use the same chips, share the same software and hardware design, which support PCIe and USB two modes of interface, and the only difference is on category and DL MIMO configuration as below 1~3 detailed.

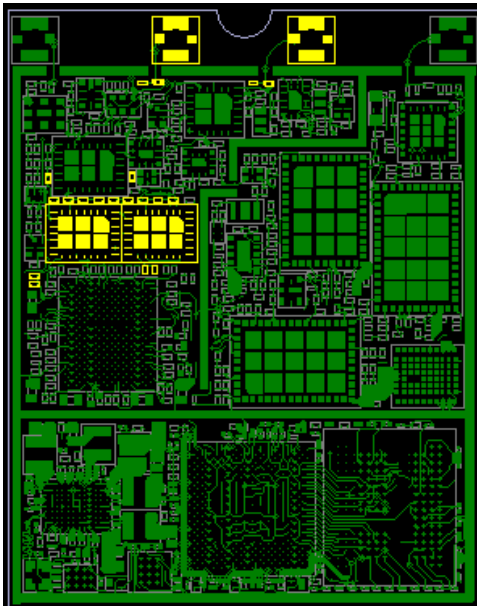
1. EM160R-GL and EM120R-GL support PCIe and USB two modes of interface via software configurations with different firmwares, all other features are same with the 2 modes firmware.

2. EM160R-GL supports CAT16 and EM120R-GL supports CAT12.

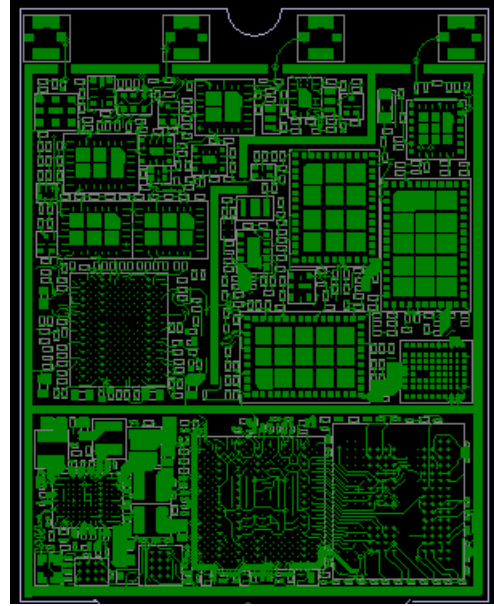
EM160R-GL increases two MIMO paths with middle/high bands, the middle/high bands include B1/2/3/4/7/25/30/32/38/39/40/41/66. All the others are same.

Module	Category	Supported Band	DL MIMO
EM160R-GL	CAT16	WCDMA: B1/B2/B3/B4/B5/B6/B8/B19 LTE-FDD: B1/B2/B3/B4/B5/B7/B8/B12/B13/B14/B17/B18/B19/B20 /B25/B26/B28/B29/B30/B32/B66 LTE-TDD: B38/B39/B40/B41/B42/B43/B46/B48	4
EM120R-GL	CAT12	WCDMA: B1/B2/B3/B4/B5/B6/B8/B19 LTE-FDD: B1/B2/B3/B4/B5/B7/B8/B12/B13/B14/B17/B18/B19/B20 /B25/B26/B28/B29/B30/B32/B66 LTE-TDD: B38/B39/B40/B41/B42/B43/B46/B48	2

3. EM160R-GL and EM120R-GL share the same hardware design, EM120R-GL just removed 4*4 MIMO related components from EM160R-GL as below shows.



EM120R-GL (Yellow marked means vacant)



EM160R-GL

Designator	EM120R-GL (Part Description)	EM160R-GL (Part Description)
U1901	/	IC RF RX DFEM LTE B1/3/7/25/30/32/39/40/41/66 4.4x3.3mm H0.65mm RO
U2001	/	IC RF RX DFEM LTE B1/3/7/25/30/32/39/40/41/66 4.4x3.3mm H0.65mm RO
J1901	/	CON RFC antenna connector 2x2mm H0.6mm RO
J2001	/	CON RFC antenna connector 2x2mm H0.6mm RO

Above changes won't impact the protocol and RF performance for original frequency bands, so test report of FCC ID "XMR2020EM120RGL" refer to test report of "XMR2020EM160RGL".

Your assistance on this matter is highly appreciated.

Jean Hu

Jean Hu

Quectel Wireless Solutions Company Limited.

TEL: +86-21-51086236 ext 6511