

Statement

We **Quectel Wireless Solutions Co., Ltd** declare the following models.

Product Name: LTE Cat M1 & Cat NB2 & EGPRS Module

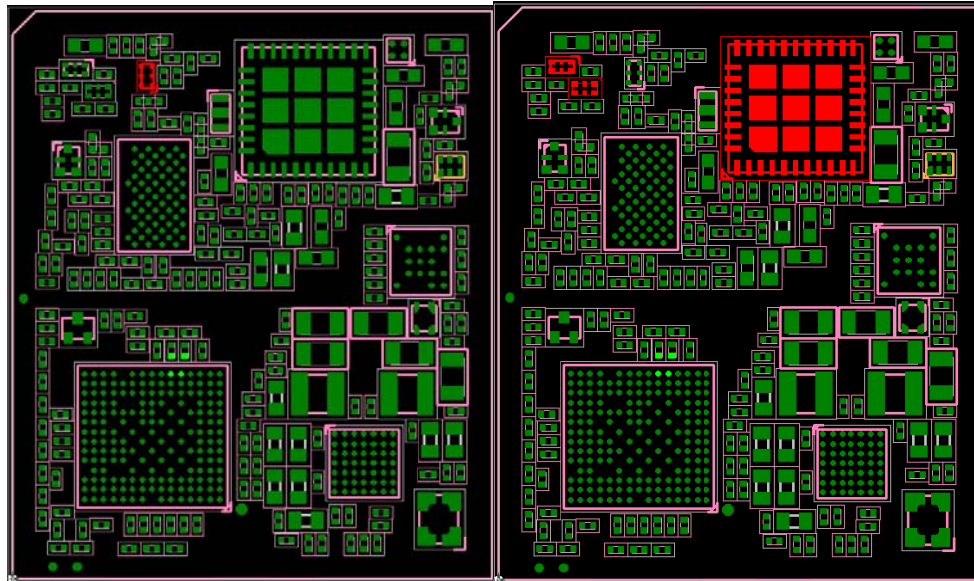
Model Number: BG95-M3, BG95-M2

Hardware Version: R2.1

Module	Category	Supported Band
BG95-M3	CatM1/NB-IoT/EGPRS	<p>Cat M1:</p> <p>LTE-FDD: B1/B2/B3/B4/B5/B8/B12/B13/B14/B18/B19/B20/ B25/B26/B27/ B28/B66/B85</p> <p>Cat NB2:</p> <p>LTE-FDD:B1/B2/B3/B4/B5/B8/B12/B13/ B18/B19/B20/B25/B26/ B28/B66/B71/B85</p> <p>EGPRS: 850/900/1800/1900MHz</p>
BG95-M2	CatM1/NB-IoT	<p>Cat M1:</p> <p>LTE-FDD:B1/B2/B3/B4/B5/B8/B12/B13/B18/B1 9/B20/B25/B26/ B27/B28/B66/B85</p> <p>Cat NB2:</p> <p>LTE-FDD:B1/B2/B3/B4/B5/B8/B12/B13/ B18/B19/B20/B25/B28/B66/B71/B85</p>

BG95-M3 and BG95-M2 share the same HW design, only deletion on the hardware network according to the model requirement of the product definition, BG95-M2 deletes the 2G part on the basis of BG95-M3.

Also, BG95-M2 closed LTE CatM1 Band14 and NB-IoT Band26 through software.



BG95-M3

BG95-M2

Designator	BG95-M3 (Part Description)	BG95-M2 (Part Description)
U602	NA	IC RF THIN-FILM Directional Coupler 450MHz-3800MHz 1.0x0.5mm H0.3mm RO
U603	IC RF SWITCH SP10T + GSM Qualband 5.3x5.5mm H0.905mm RO	NA
U502	IC RF LOW PASS FILTER 698-960MHz 1.0x0.5mm H0.4mm RO	NA
U504	IC RF TX LPF 1695-2180MHz 1.0x0.5mm H0.5mm RO	NA

The change will not impact RF performance of CatM1 and NB-IoT.

Your assistance on this matter is highly appreciated.

Sincerely,

Name: Jean Hu

Title: Certification Section