

# Statement

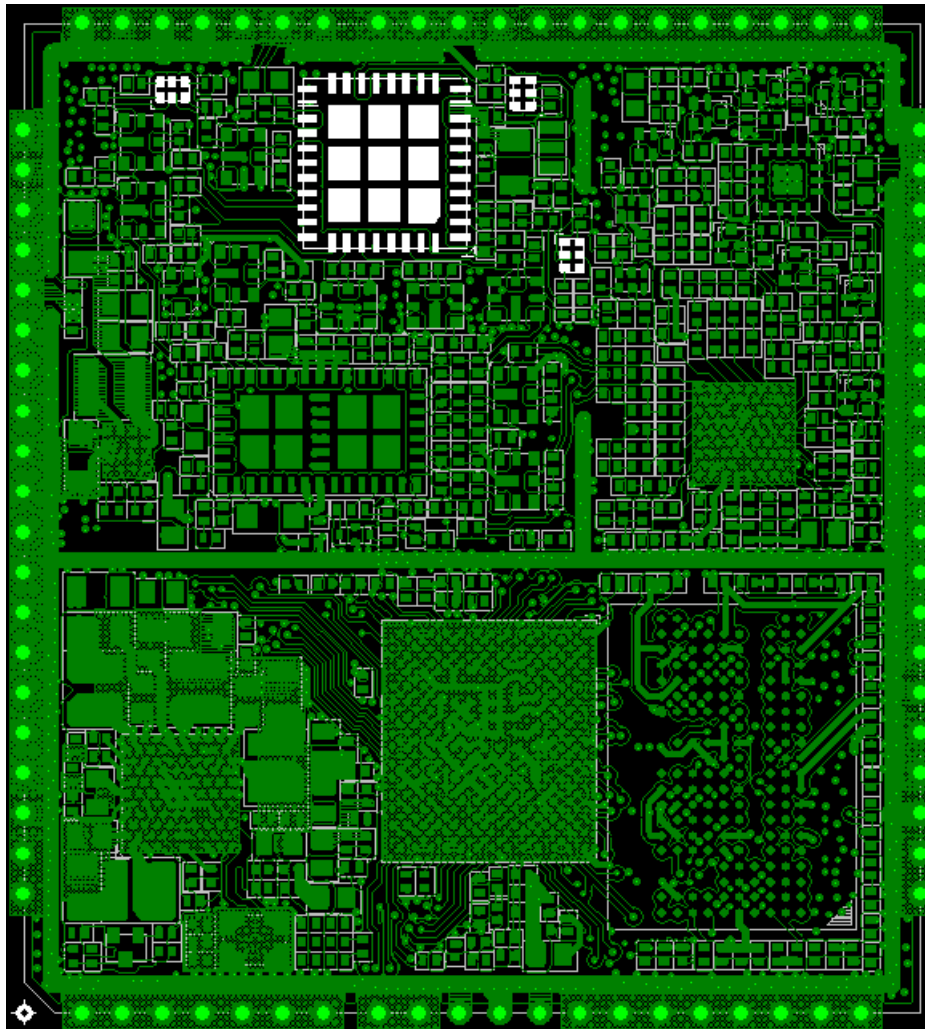
We Quectel Wireless Solutions Co., Ltd declare the following models.

**Product Name:** LTE Module

**Model Number:** EC25-AUX

**Hardware Version:** R2.0

The new version of EC25-AUX share the same HW design with the certificated version,  
The main differences are Switch and TXM as follow:



Quectel Wireless Solutions Co., Ltd

<b>Designator</b>	<b>EC25-AUX (Original) (Part Description)</b>	<b>EC25-AUX (new version) (Part Description)</b>
<b>U0702</b>	BGS12SN6 E6327 IC RF SWITCH SPDT 30dBm 1.1x0.7mm H0.375mm RO	MXD8625C IC RF SWITCH SPDT 36.5dBm 1.1x0.7mm H0.45mm RO
<b>U0703</b>	BGS12SN6 E6327 IC RF SWITCH SPDT 30dBm 1.1x0.7mm H0.375mm RO	MXD8625C IC RF SWITCH SPDT 36.5dBm 1.1x0.7mm H0.45mm RO
<b>U0801</b>	BGS12SN6 E6327 IC RF SWITCH SPDT 30dBm 1.1x0.7mm H0.375mm RO	MXD8625C IC RF SWITCH SPDT 36.5dBm 1.1x0.7mm H0.45mm RO
<b>U0803</b>	VC7912-61 IC RF SWITCH SP10T + GSM Qualband 5.3x5.5mm H0.905mm RO	VC7916-62 IC RF SWITCH SP14T + GSM Qualband 5.3x5.5mm H0.83mm RO

The change will not impact RF performance for original frequency bands.

Verification with the causal impact are related test made, and the results reflect the modification remains compliant below the compliance level.

Your assistance on this matter is highly appreciated.



**Sincerely,**

**Name:** Jean Hu

**Title:** Certification Section