

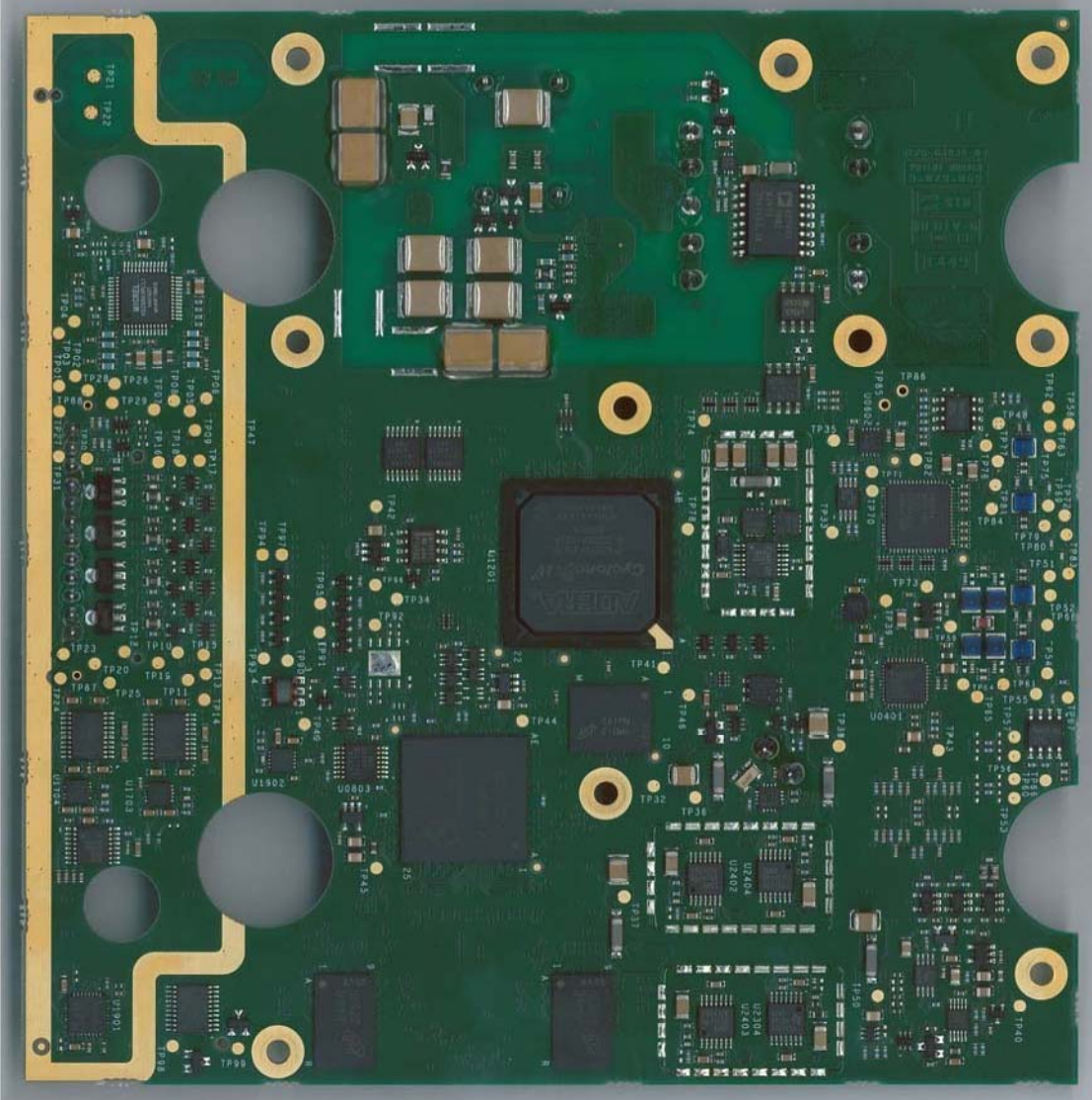
Tornado open in chassis



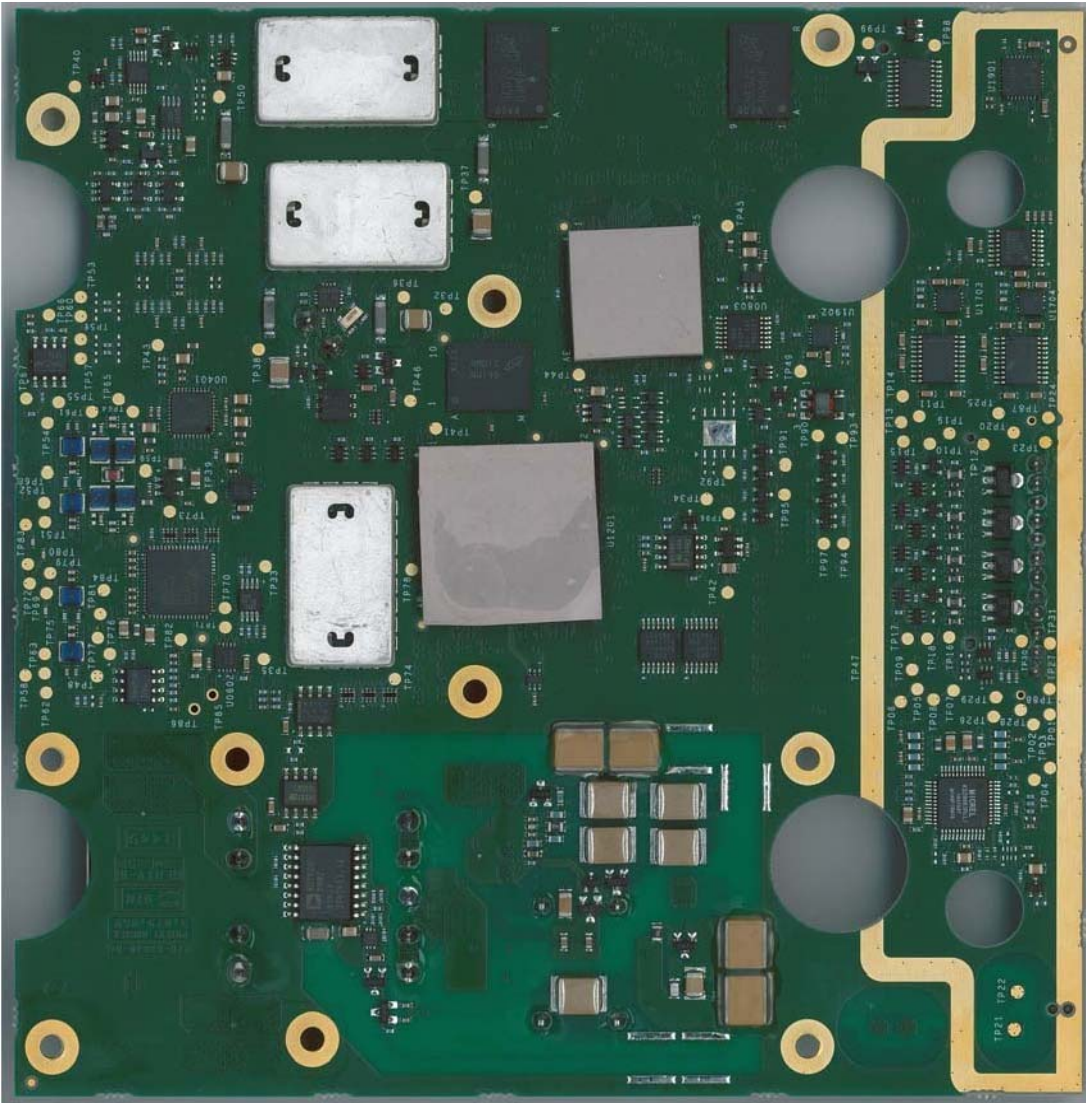
Digital board in chassis



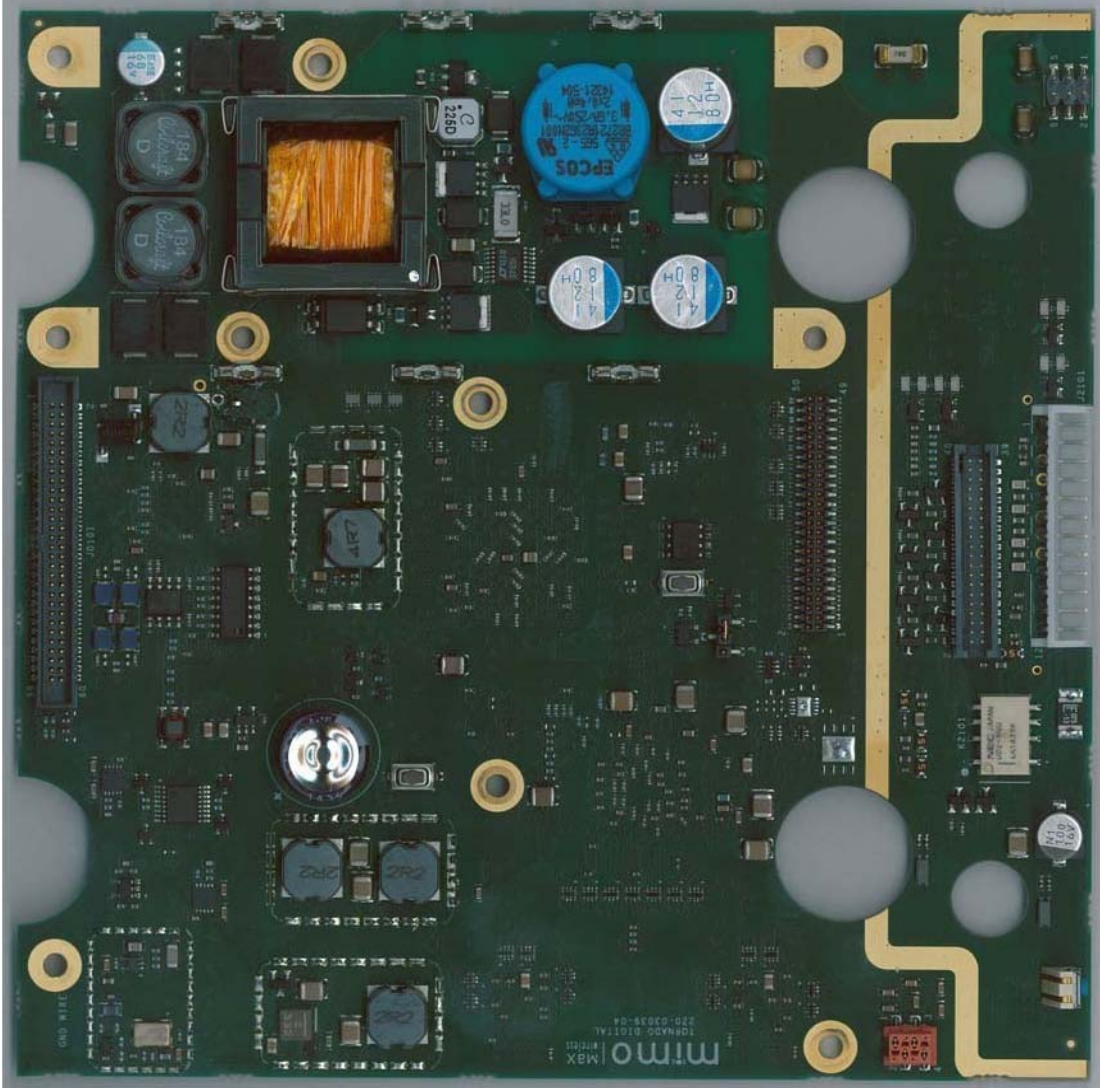
Digital board bottom side no shields



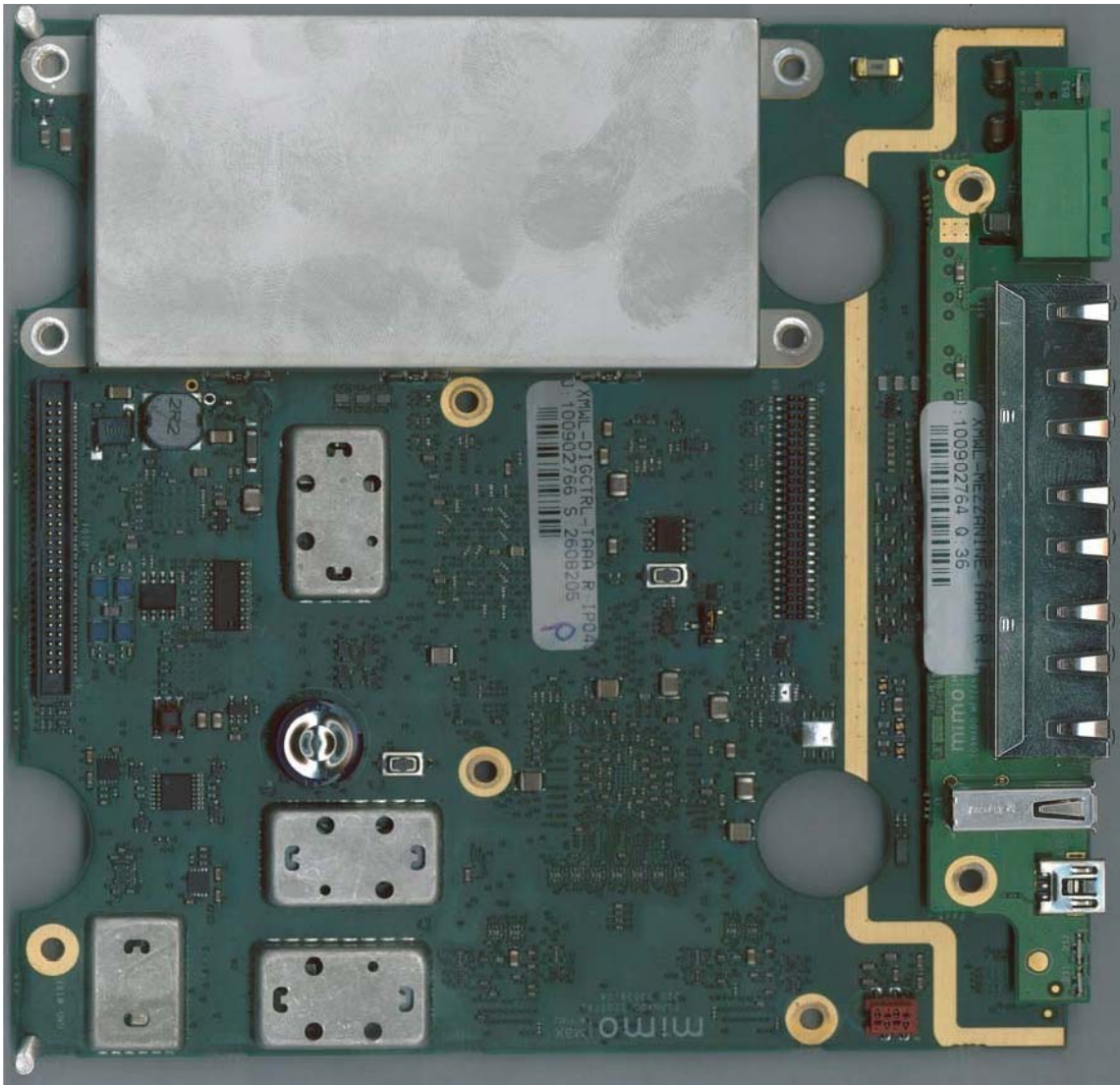
Digital board bottom side with shields



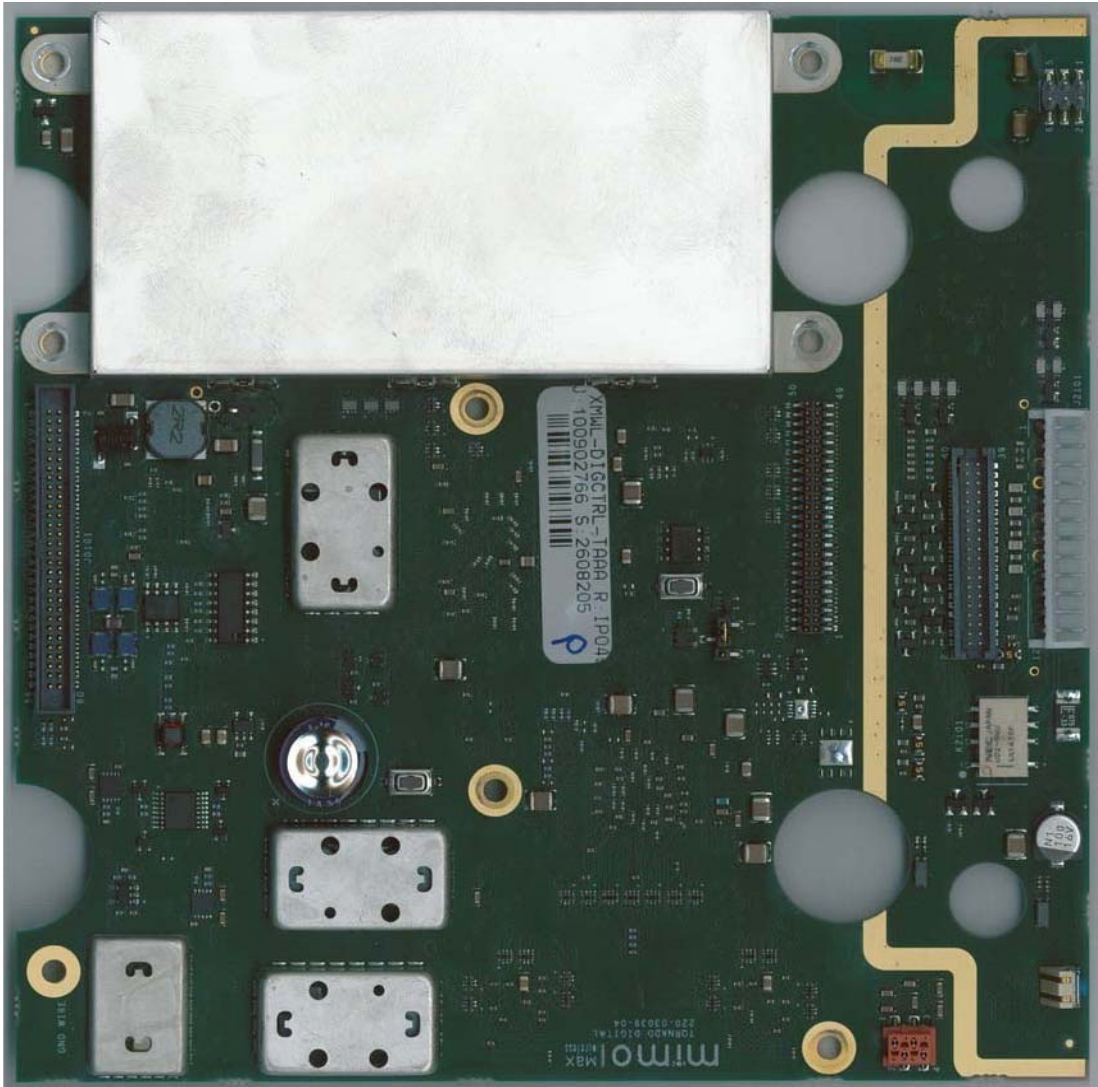
Digital board top side no shields



Digital board top side with shields and interface board



Digital board top side with shields

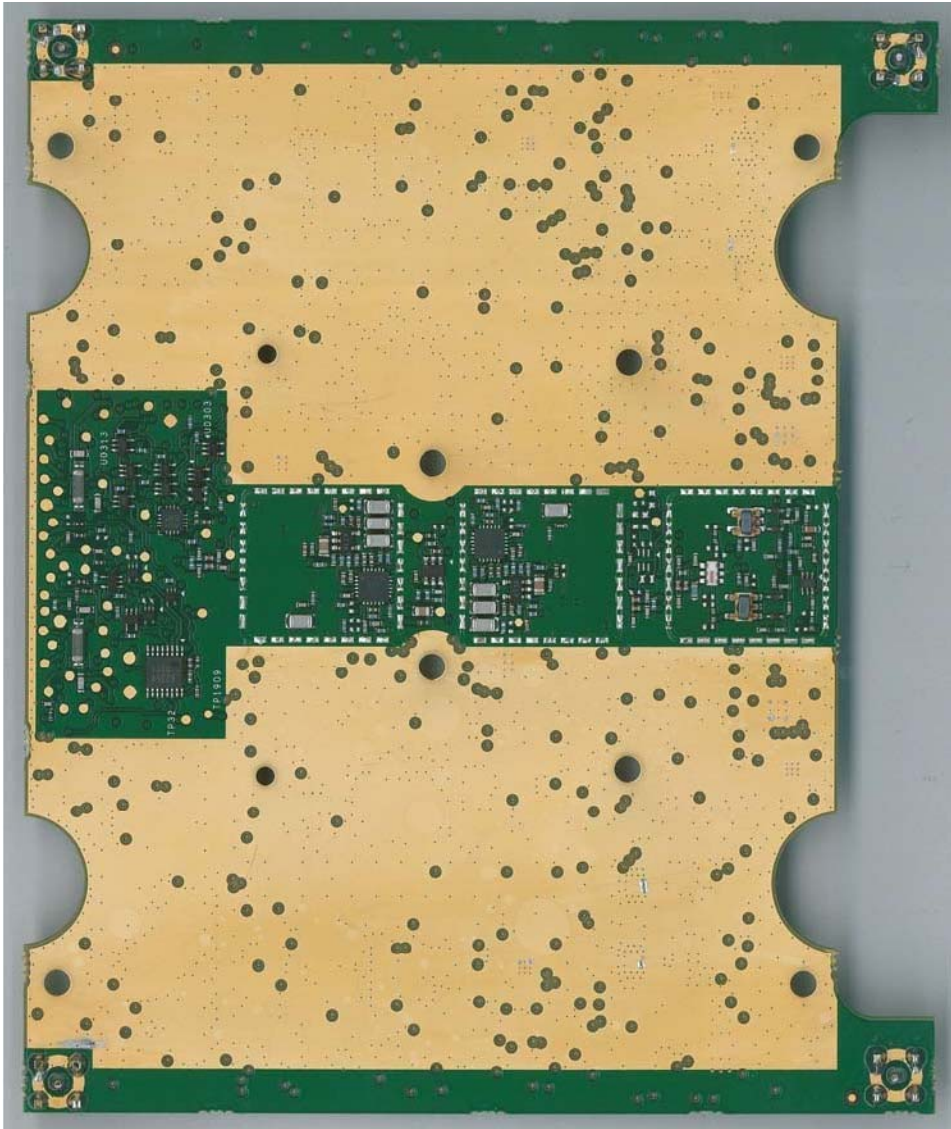


RF board in chassis

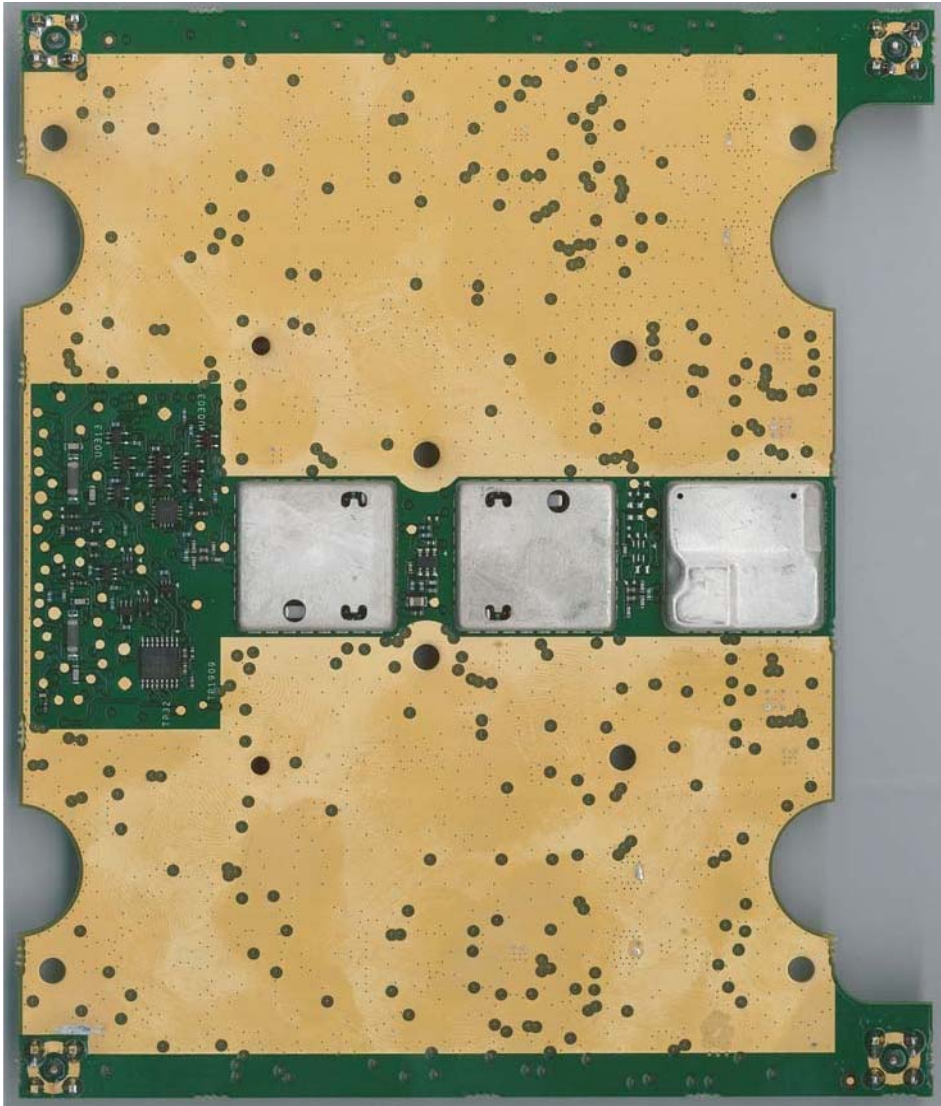




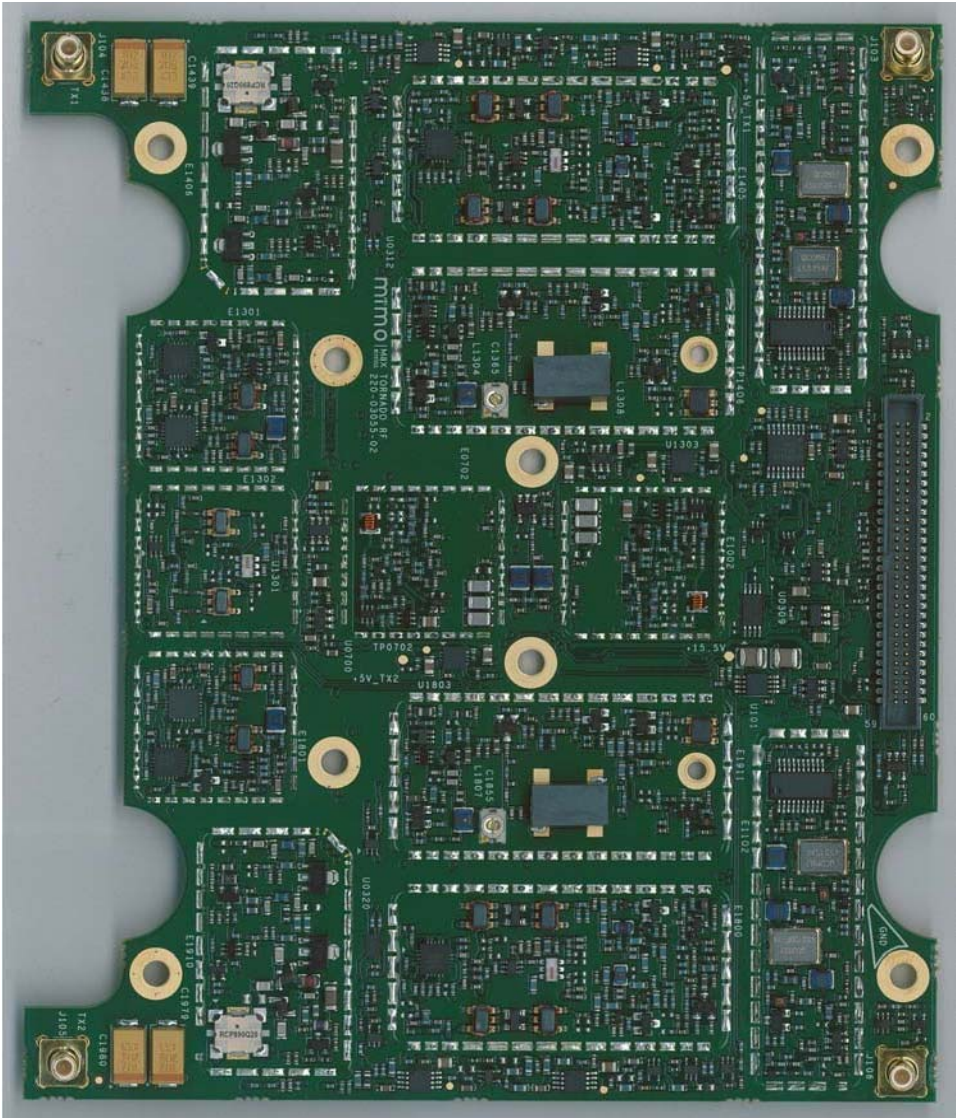
RF board bottom side no shields



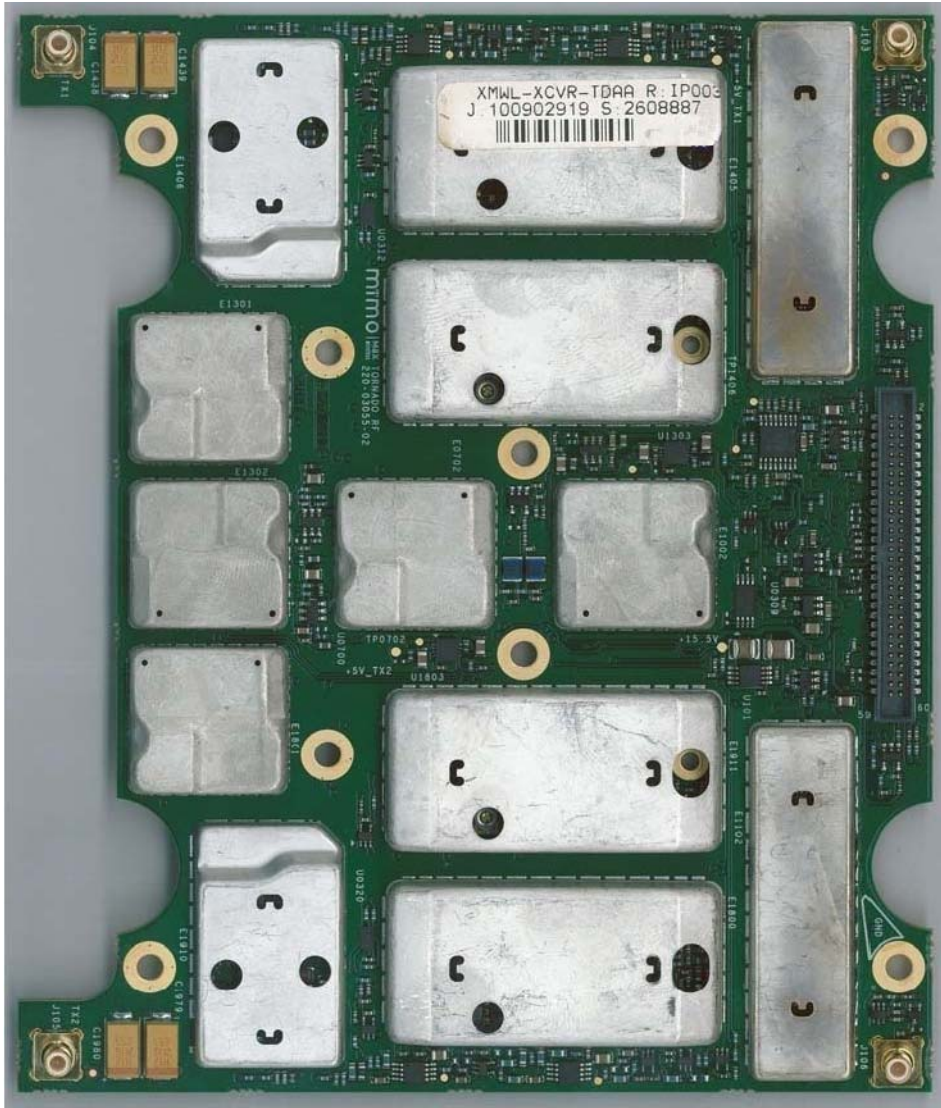
RF board bottom side with shields



RF board top side no shields



RF board top side with shields



Duplexer 800MHz

