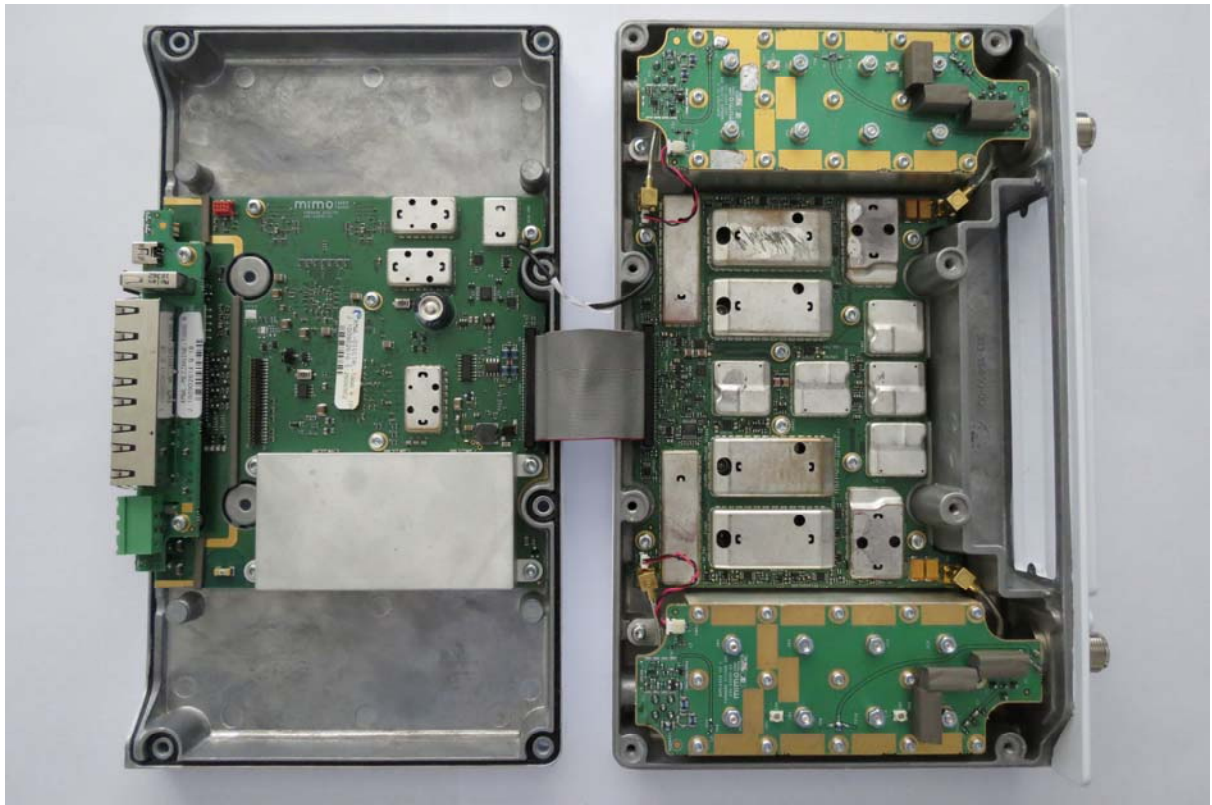


Clam shell with boards



Digital mezzanine in chassis



Digital mezzanine bottom with shields



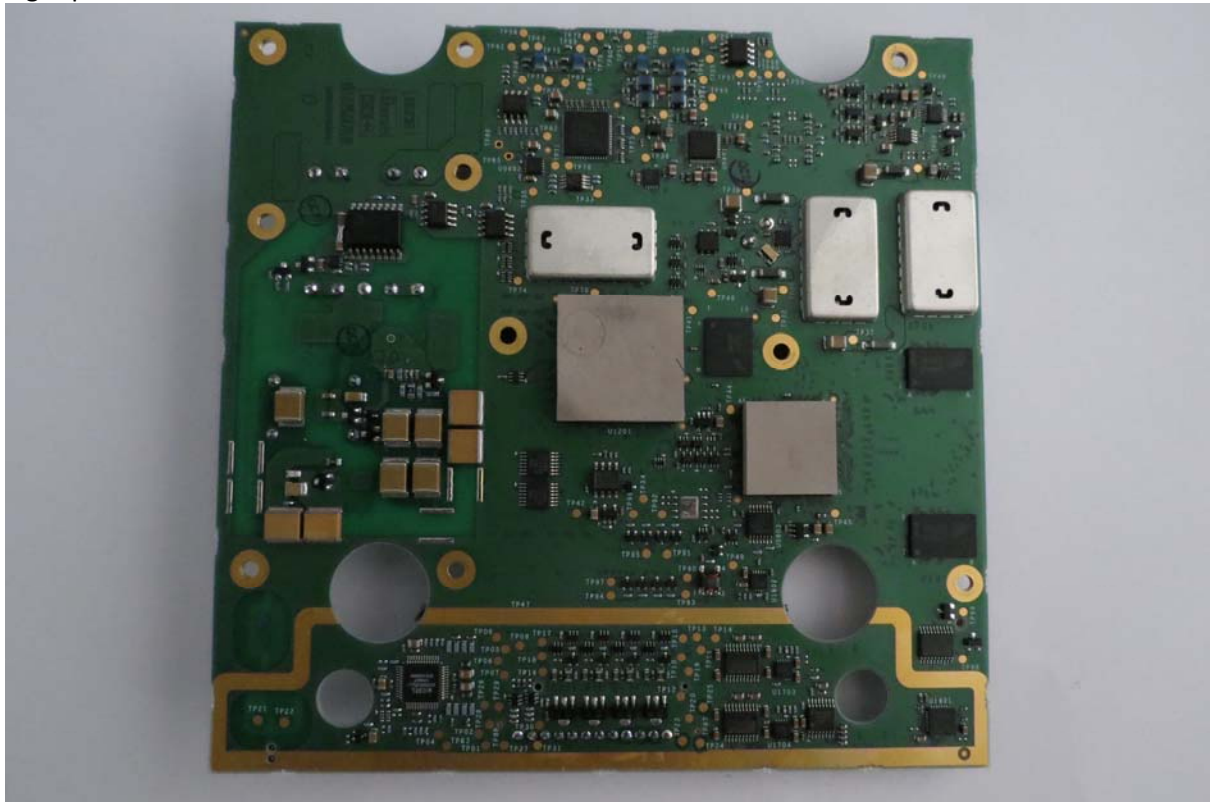
Digital bottom with shields



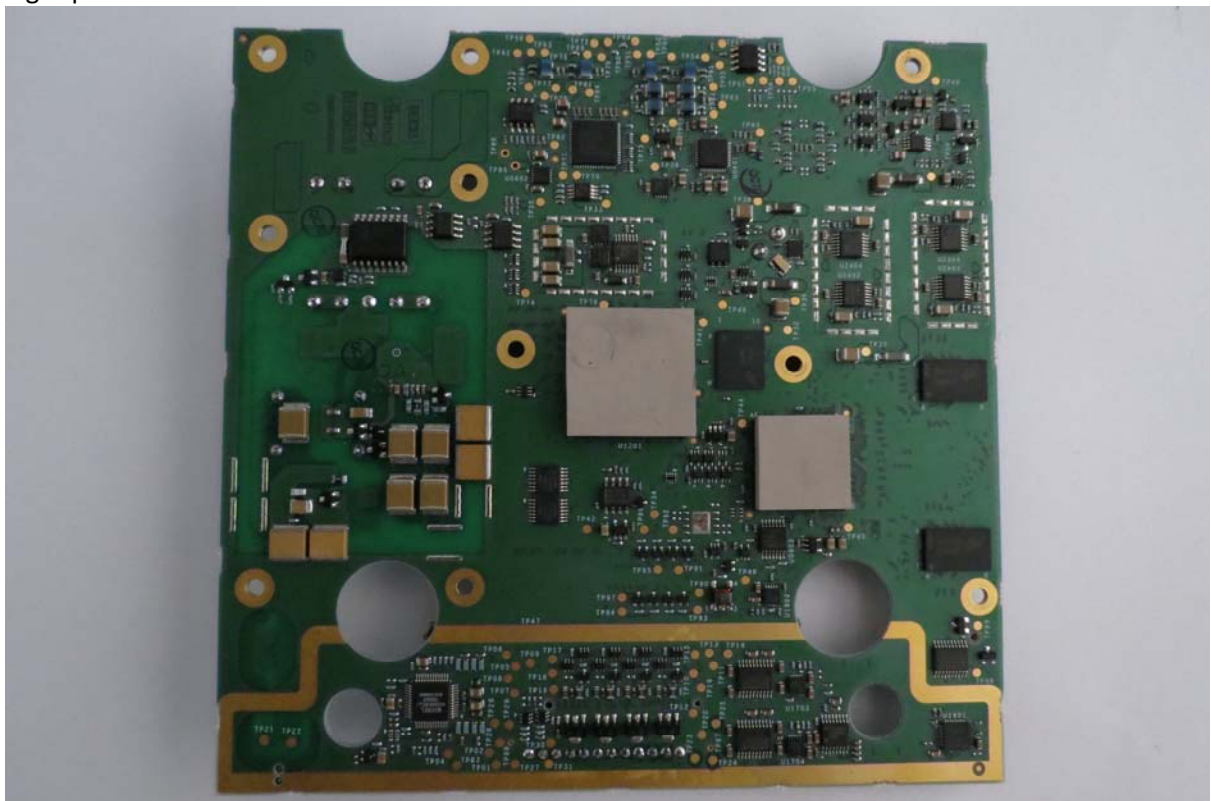
Digital bottom with no shields



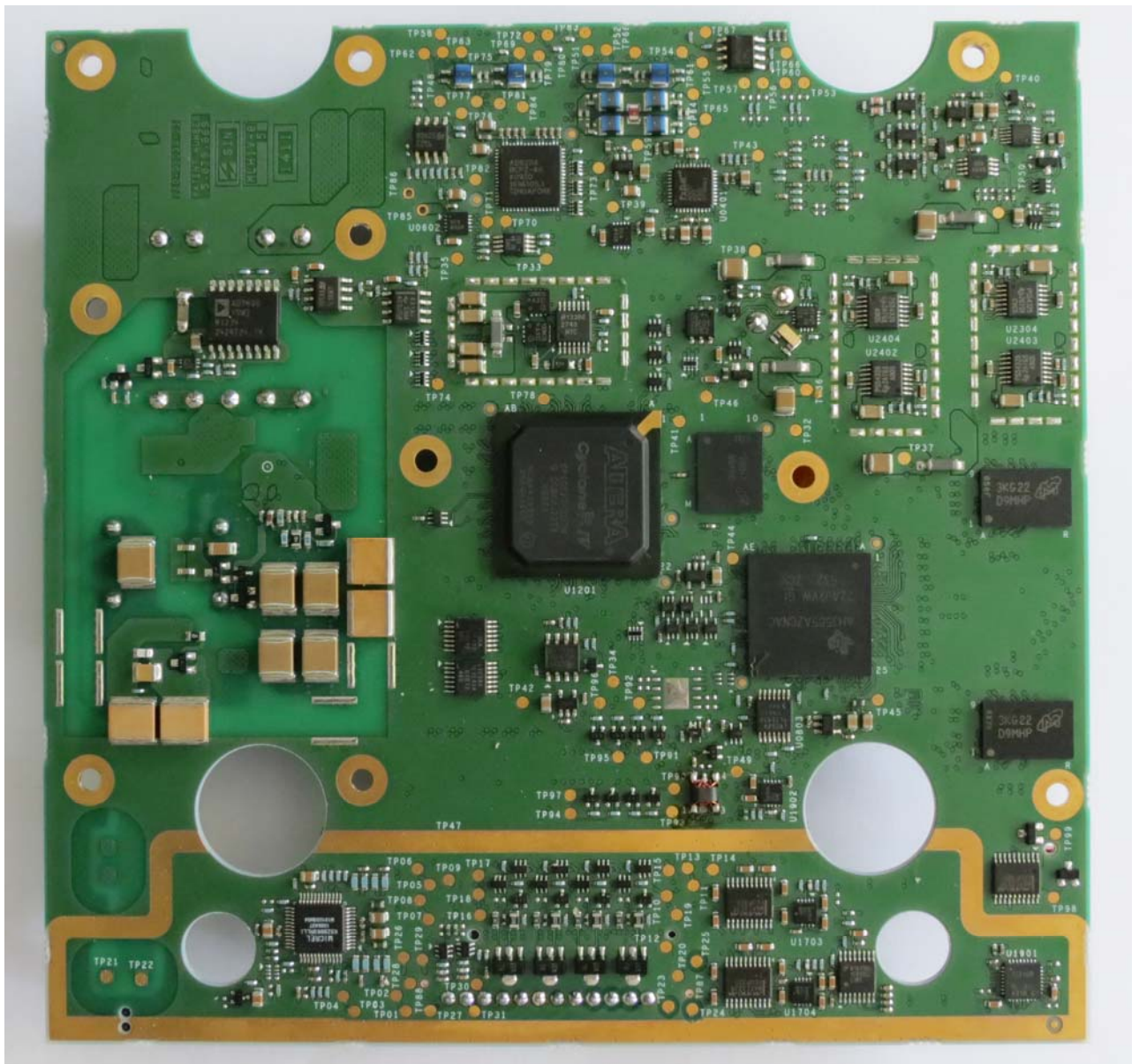
Dig top with shields



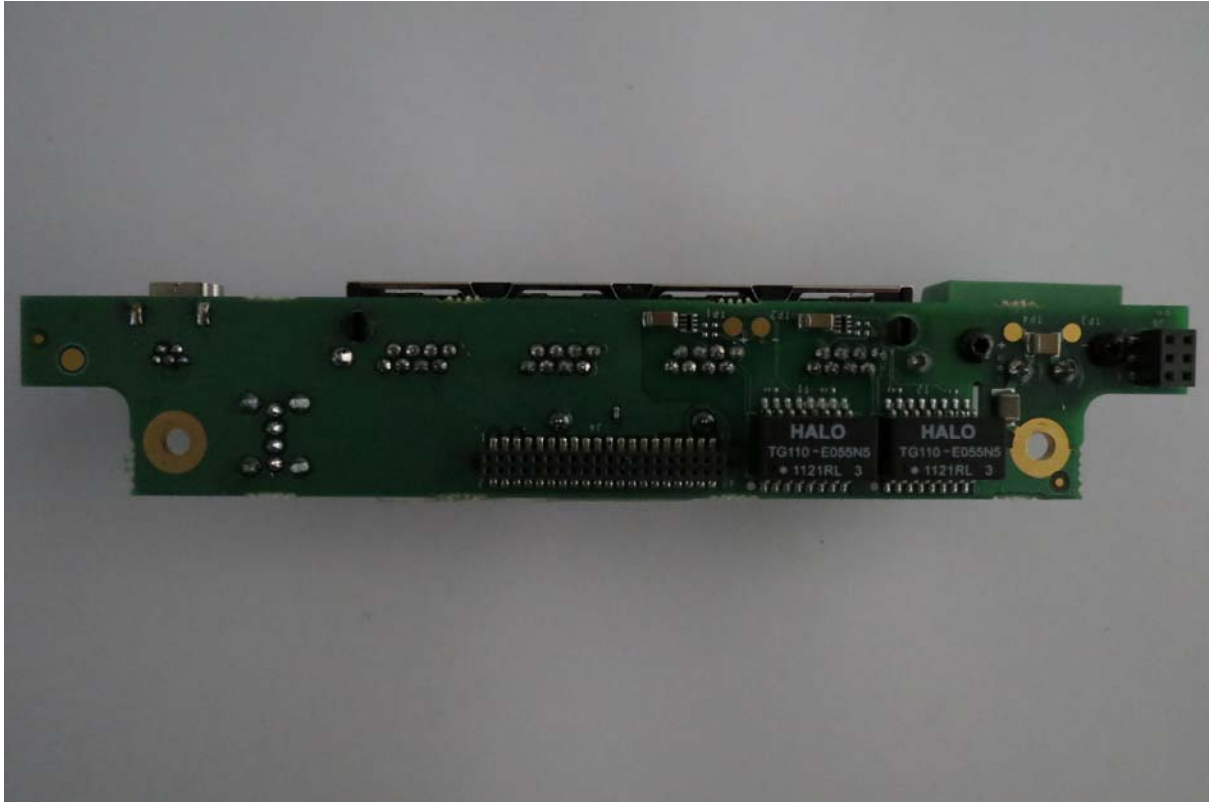
Dig top no shields



Shield removed



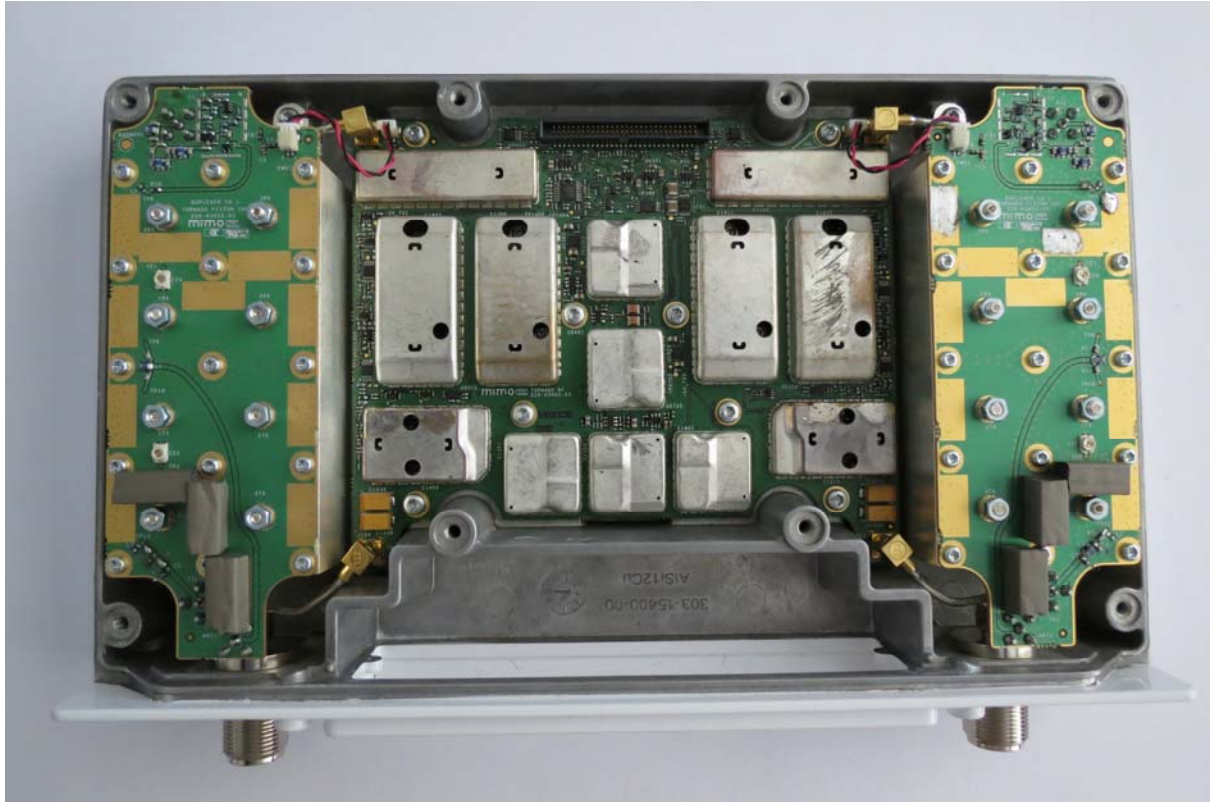
Mezzanine bottom



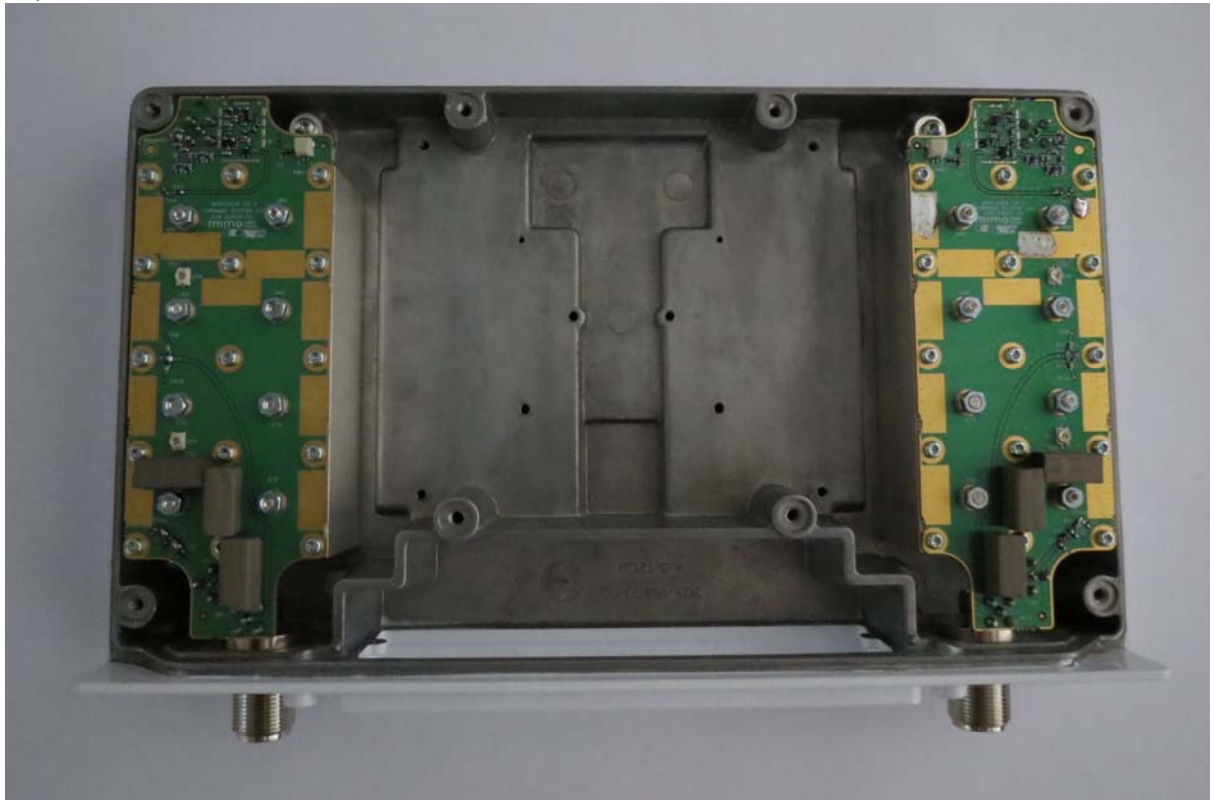
Mezzanine top



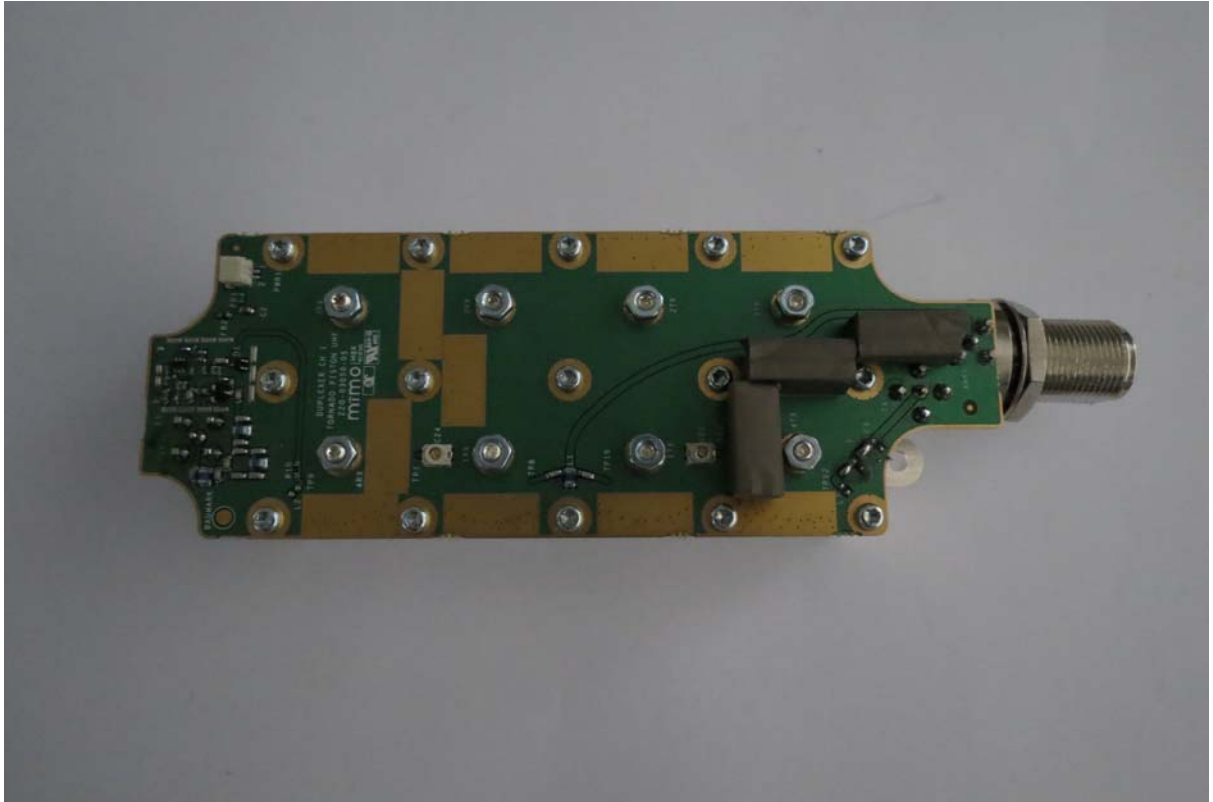
RF Duplexer in Chasis



Duplexer in chasis

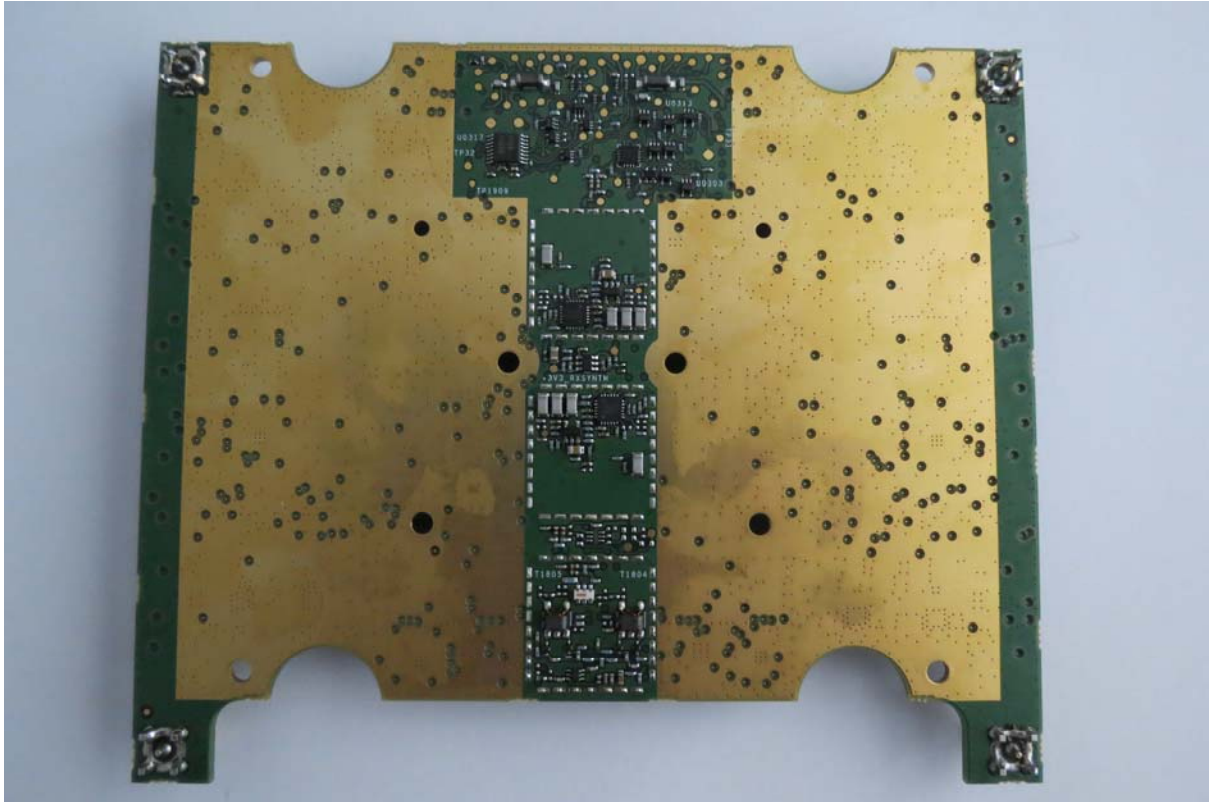


Duplexer top

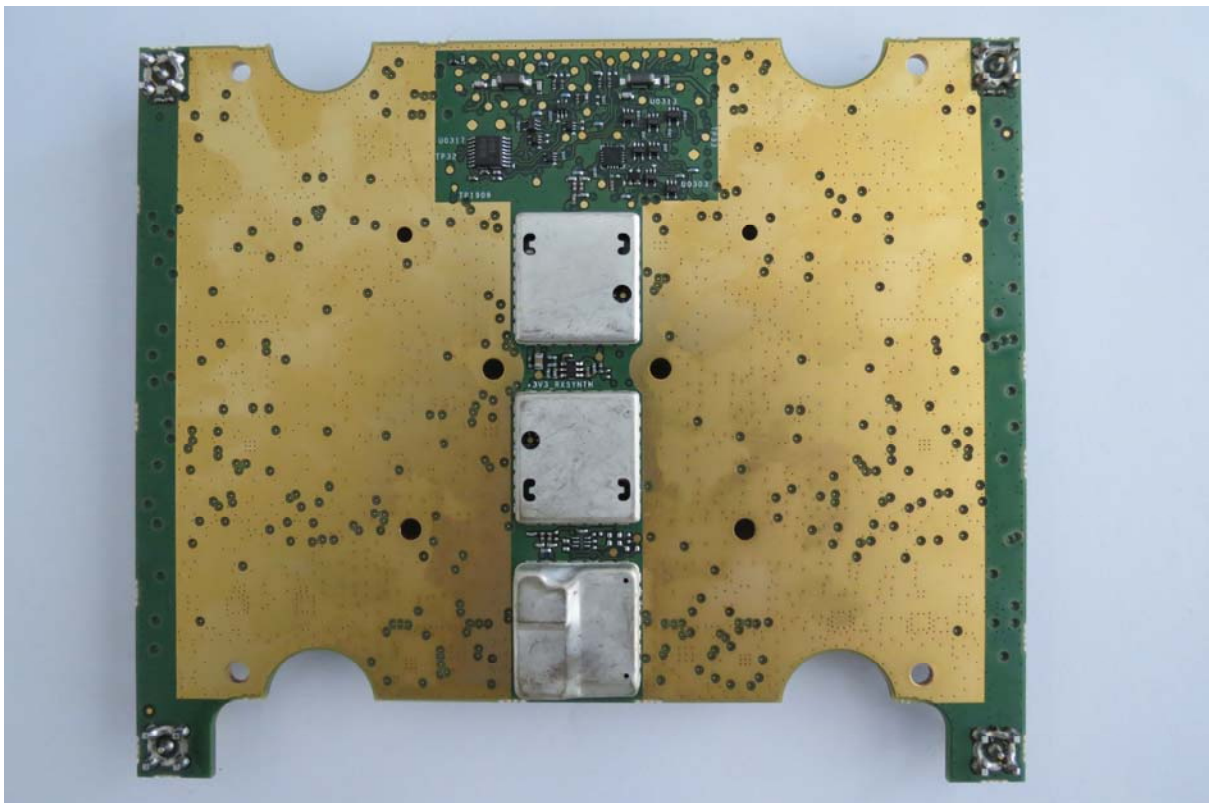




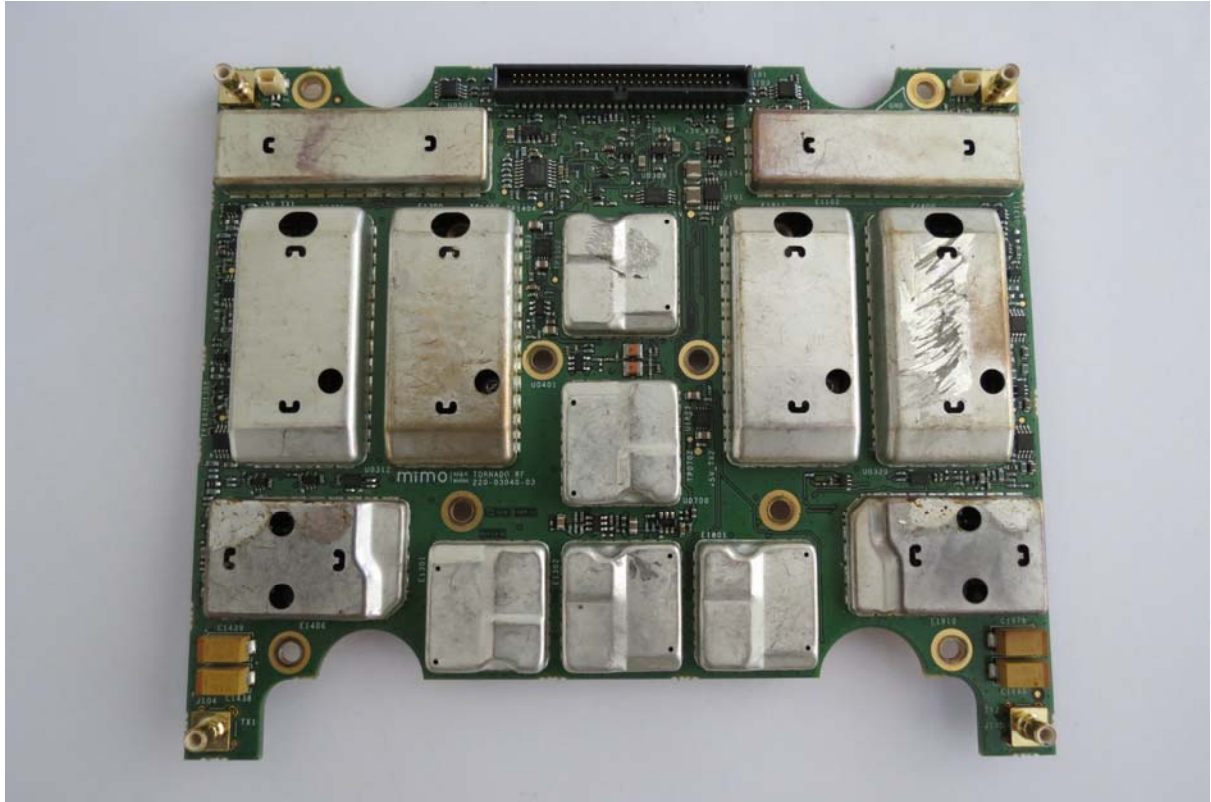
RF PCB bottom with no shields



RF bottom with shields



RF PCB top with shields



RF PCB top with no shields

