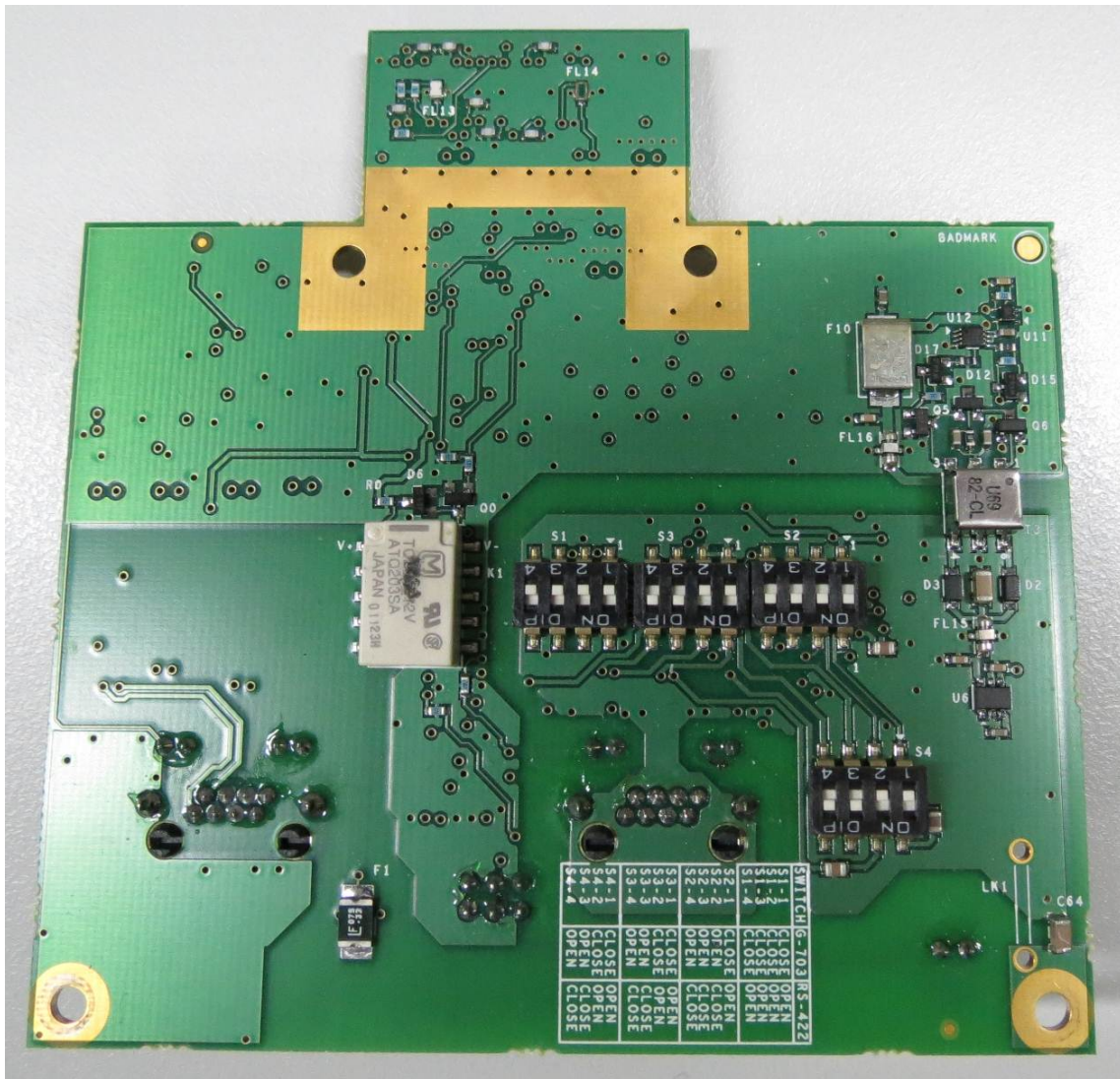


## Internal Views

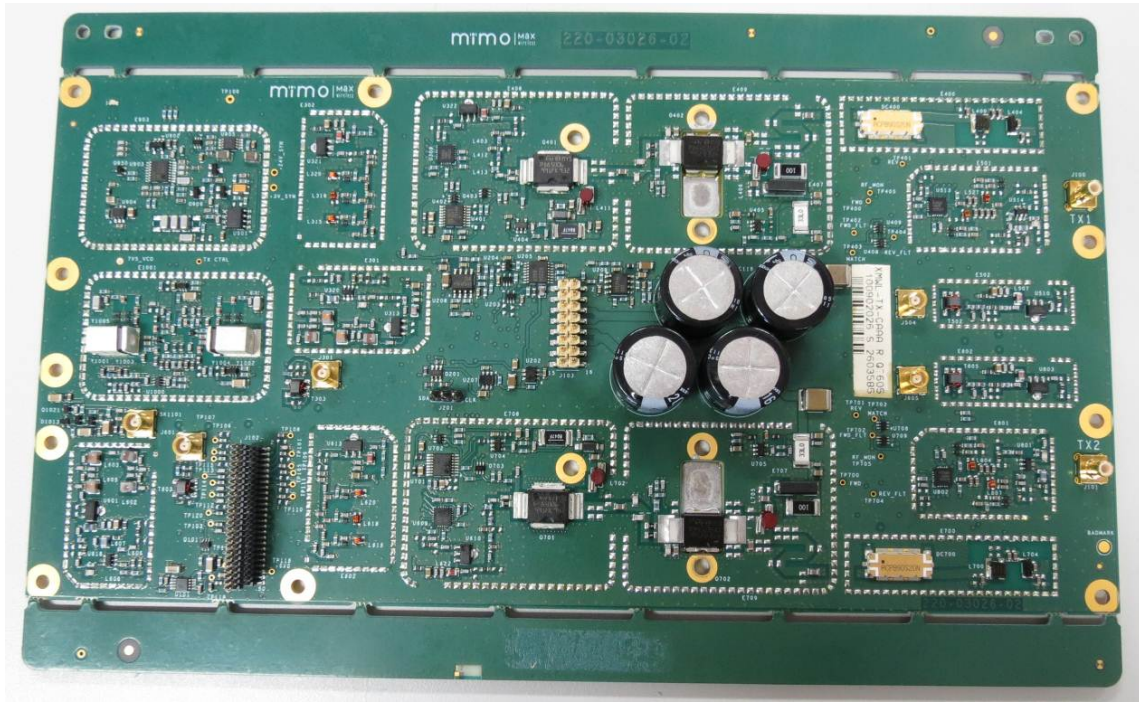
### Main PCB



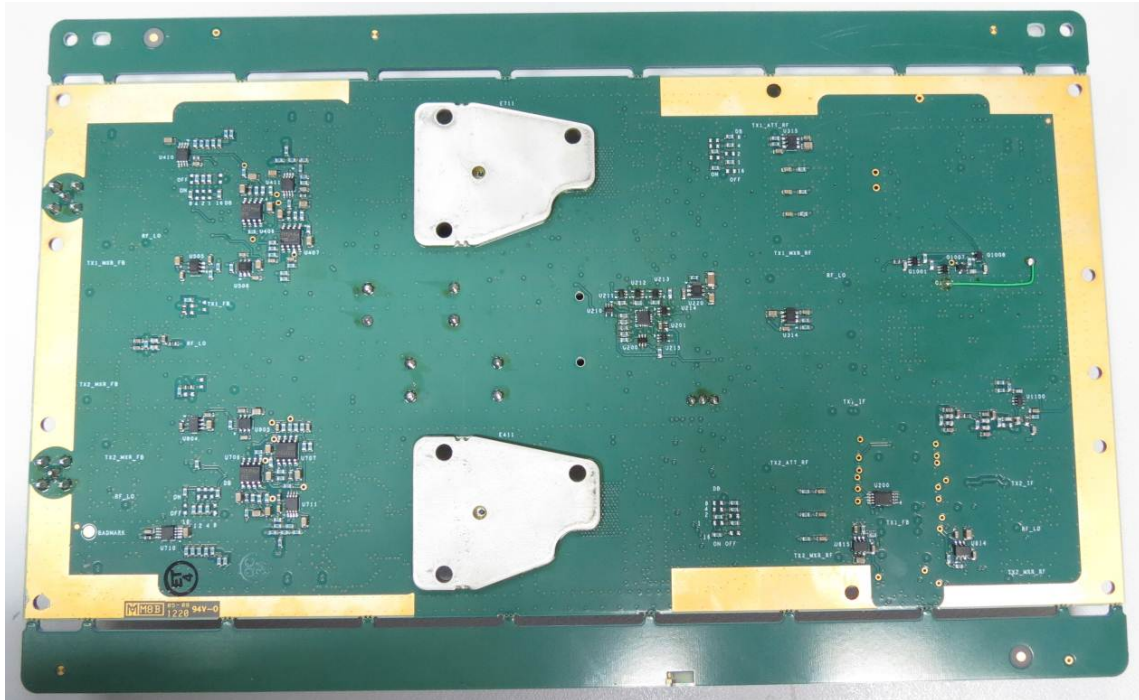
# Main PCB



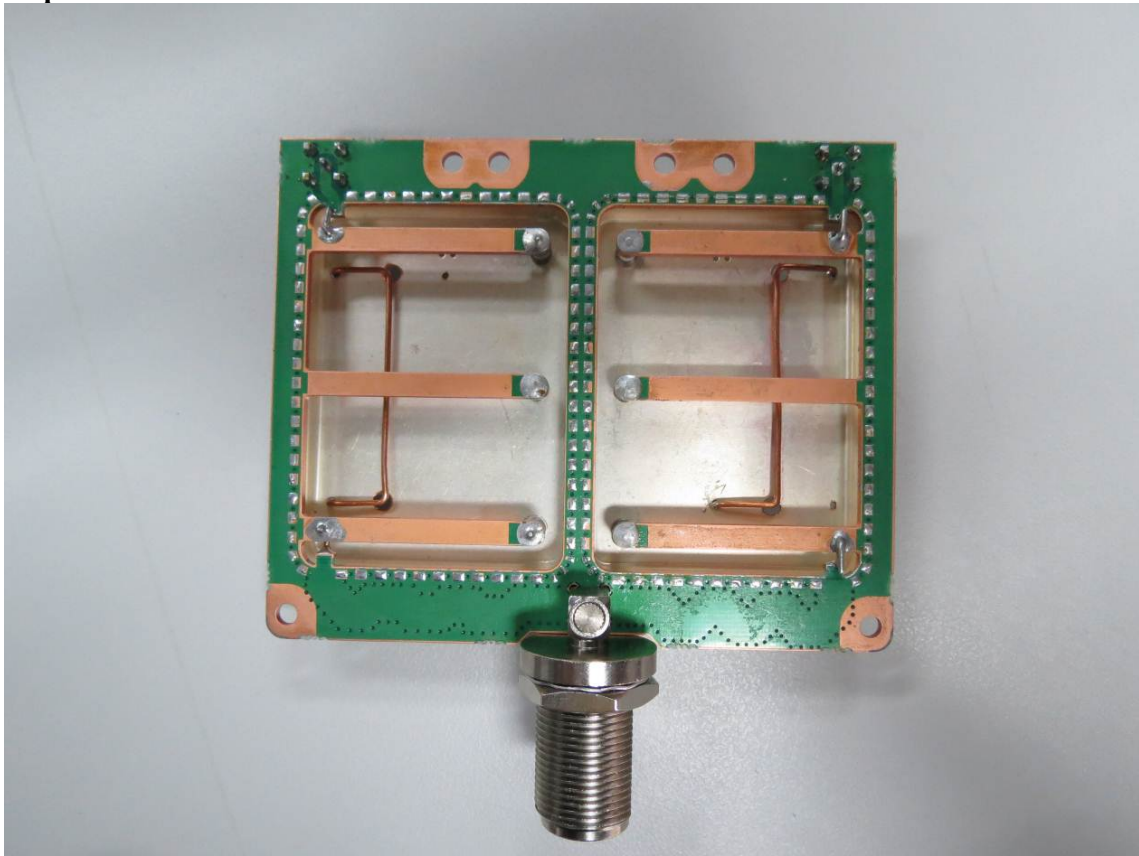
# TX PCB



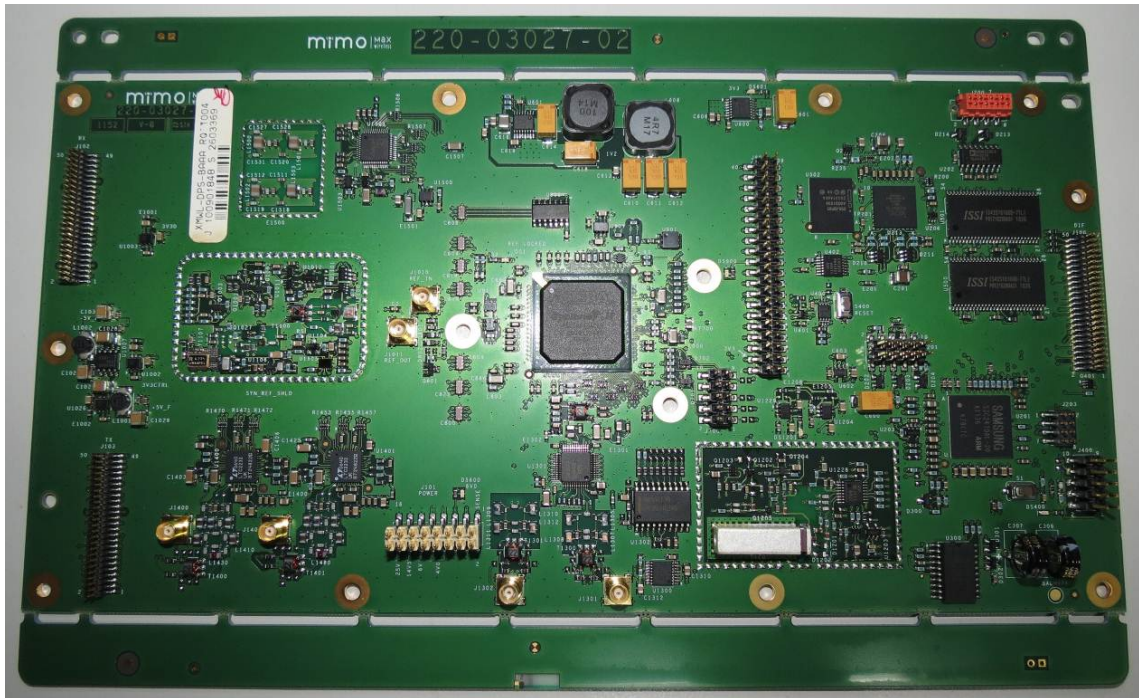
# TX PCB



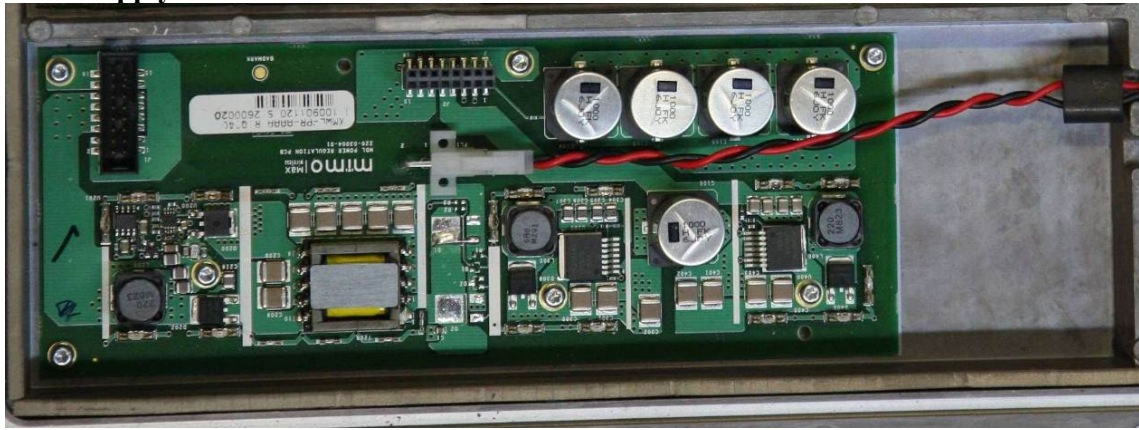
## Duplexer



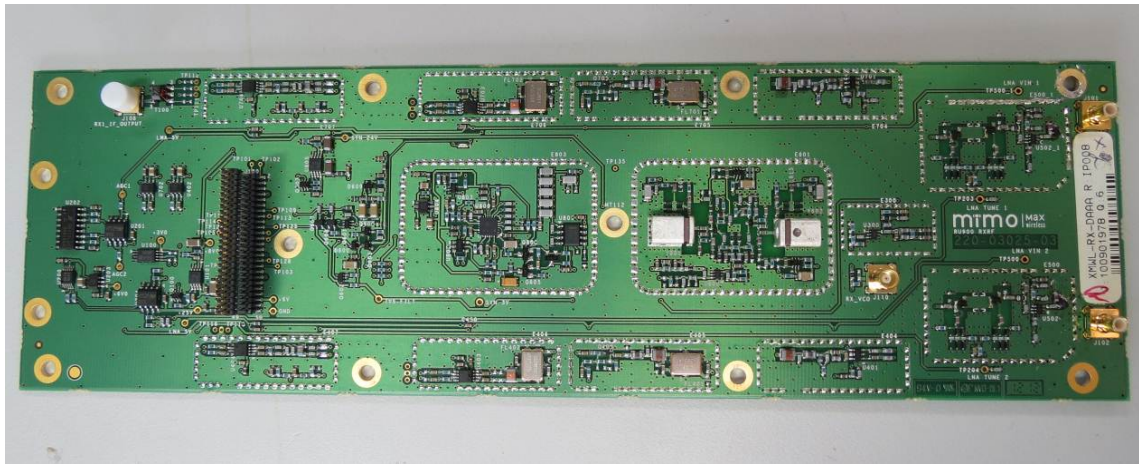
## DPS PCB



## PWR Supply



## RX PCB



Transmitter VCO section of the PCB assembly XMWL-TX-CAAA

This photo shows that only resonators Y1001 and Y1002 are fitted for obtaining coverage over the operating frequency range for USA market

