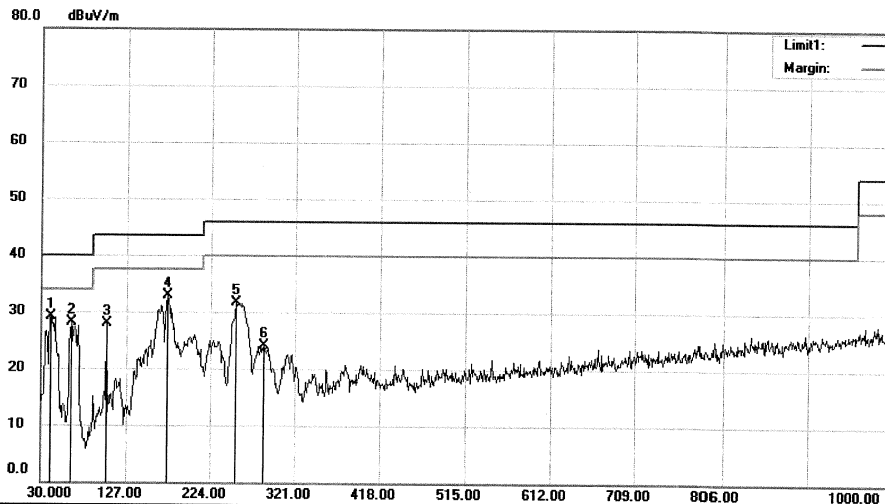


Shenzhen EMTEK Co., Ltd.
 Bldg. 69, Majialong Industry Zone, Nanshan District, Shenzhen, Guangdong, 518052 P. R. China
 www.emtek.com.cn Tel:+86-755-2695 4280 Fax:+86-755-2695 4282


Radiated Emission Measurement

File :TUV Data :#632 Date: 2016/05/27



Site 3m Chamber #3 Polarization: **Vertical** Temperature: 24 C
 Limit: (RE)FCC PART 15 CLASS B Power: AC 120V/60Hz Humidity: 53 %
 EUT: MID
 M/N: NS-P16AT08
 Mode:DQPSK 2441
 Note:

| No. | Mk. | Freq. | Reading Level | Correct Factor | Measurement | Limit | Over | Antenna Height | Table Degree | Detector | Comment |
|-----|-----|----------|---------------|----------------|-------------|--------|--------|----------------|--------------|----------|---------|
| | | MHz | dBuV | dB | dBuV/m | dBuV/m | dB | cm | degree | | |
| 1 | | 40.6700 | 44.36 | -15.34 | 29.02 | 40.00 | -10.98 | | | QP | |
| 2 | | 63.9500 | 44.32 | -16.30 | 28.02 | 40.00 | -11.98 | | | QP | |
| 3 | | 103.7200 | 43.25 | -15.30 | 27.95 | 43.50 | -15.55 | | | QP | |
| 4 | * | 174.5300 | 50.15 | -17.20 | 32.95 | 43.50 | -10.55 | | | QP | |
| 5 | | 253.1000 | 44.99 | -13.33 | 31.66 | 46.00 | -14.34 | | | QP | |
| 6 | | 285.1100 | 36.26 | -12.23 | 24.03 | 46.00 | -21.97 | | | QP | |

*:Maximum data x:Over limit !:over margin

Operator: KK

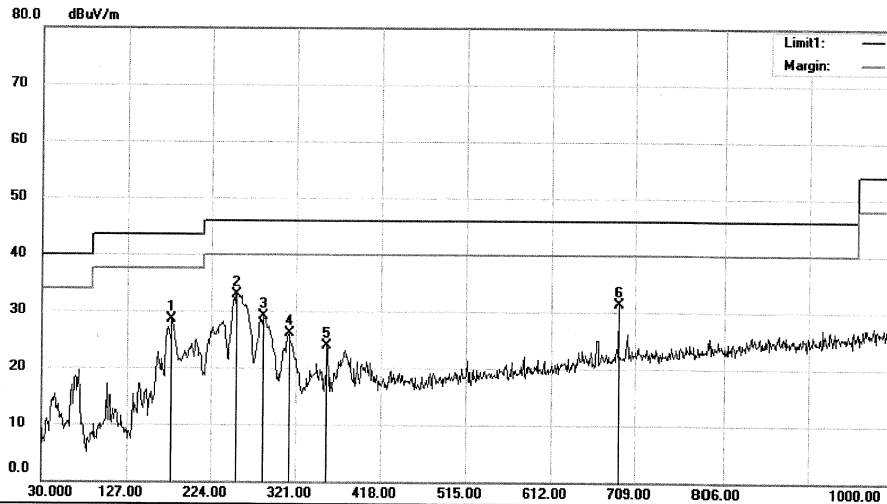
File :TUVData :#632

Page: 1

Shenzhen EMTEK Co., Ltd.
 Bldg. 69, Majialong Industry Zone, Nanshan District, Shenzhen, Guangdong, 518052 P. R. China
 www.emtek.com.cn Tel:+86-755-2695 4280 Fax:+86-755-2695 4282


Radiated Emission Measurement

File :TUV Data :#629 Date: 2016/05/27



Site 3m Chamber #3

Polarization: **Horizontal**

Temperature: 24 C

Limit: (RE)FCC PART 15 CLASS B

Power: AC 120V/60Hz

Humidity: 53 %

EUT: MID

M/N: NS-P16AT08

Mode:DQPSK 2480

Note:

| No. | Mk. | Freq. MHz | Reading Level dBuV | Correct Factor dB | Measure- ment dBuV/m | Limit dBuV/m | Over dB | Antenna Height cm | Table Degree | Comment |
|-----|-----|--------------|--------------------------|-------------------------|----------------------------|-----------------|------------|-------------------------|-----------------|---------|
| 1 | | 178.4100 | 45.71 | -17.17 | 28.54 | 43.50 | -14.96 | QP | | |
| 2 | * | 253.1000 | 46.19 | -13.33 | 32.86 | 46.00 | -13.14 | QP | | |
| 3 | | 284.1400 | 41.34 | -12.28 | 29.06 | 46.00 | -16.94 | QP | | |
| 4 | | 313.2400 | 37.54 | -11.43 | 26.11 | 46.00 | -19.89 | QP | | |
| 5 | | 356.8900 | 34.45 | -10.57 | 23.88 | 46.00 | -22.12 | QP | | |
| 6 | | 689.6000 | 35.64 | -4.40 | 31.24 | 46.00 | -14.76 | QP | | |

*:Maximum data x:Over limit !:over margin

Operator: KK

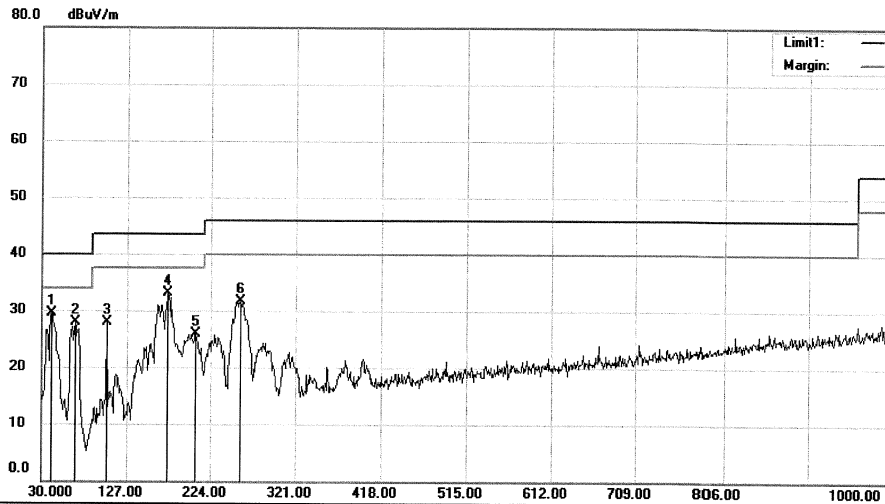
File :TUVData :#629

Page: 1

Shenzhen EMTEK Co., Ltd.
 Bldg. 69, Majialong Industry Zone, Nanshan District, Shenzhen, Guangdong, 518052 P. R. China
 www.emtek.com.cn Tel:+86-755-2695 4280 Fax:+86-755-2695 4282


Radiated Emission Measurement

File :TUV Data #630 Date: 2016/05/27



Site 3m Chamber #3 Polarization: **Vertical** Temperature: 24 C
 Limit: (RE)FCC PART 15 CLASS B Power: AC 120V/60Hz Humidity: 53 %
 EUT: MID
 M/N: NS-P16AT08
 Mode:DQPSK 2480
 Note:

| No. | Mk. | Freq. | Reading Level | Correct Factor | Measurement | Limit | Over | Antenna Height | Table Degree | |
|-----|-----|----------|---------------|----------------|-------------|--------|--------|----------------|--------------|---------|
| | | MHz | dBuV | dB | dBuV/m | dBuV/m | dB | cm | degree | Comment |
| 1 | | 40.6700 | 44.89 | -15.34 | 29.55 | 40.00 | -10.45 | QP | | |
| 2 | | 67.8300 | 45.12 | -17.29 | 27.83 | 40.00 | -12.17 | QP | | |
| 3 | | 103.7200 | 43.16 | -15.30 | 27.86 | 43.50 | -15.64 | QP | | |
| 4 | * | 174.5300 | 50.28 | -17.20 | 33.08 | 43.50 | -10.42 | QP | | |
| 5 | | 206.5400 | 41.16 | -15.20 | 25.96 | 43.50 | -17.54 | QP | | |
| 6 | | 257.9500 | 44.82 | -13.09 | 31.73 | 46.00 | -14.27 | QP | | |

*:Maximum data x:Over limit !:over margin

Operator: KK

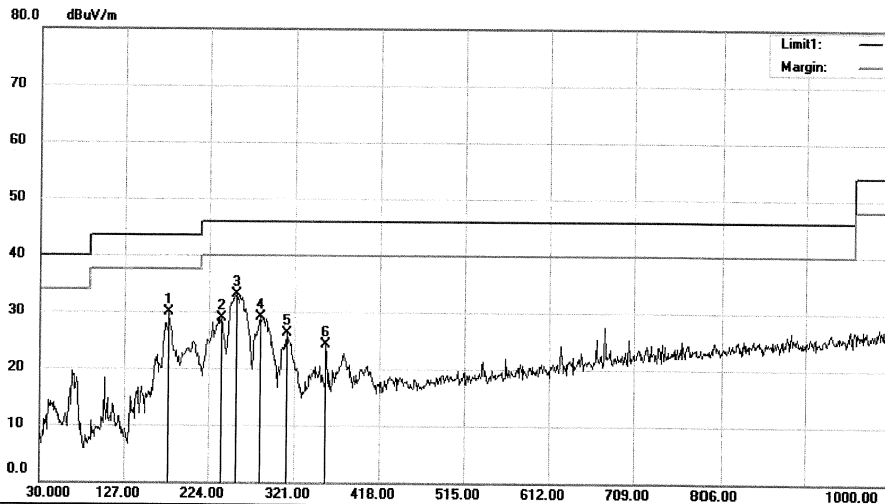
File :TUVData :#630

Page: 1

Shenzhen EMTEK Co., Ltd.
 Bldg. 69, Majialong Industry Zone, Nanshan District, Shenzhen, Guangdong, 518052 P. R. China
 www.emtek.com.cn Tel:+86-755-2695 4280 Fax:+86-755-2695 4282


Radiated Emission Measurement

File :TUV Data :#627 Date: 2016/05/27



Site 3m Chamber #3 Polarization: **Horizontal** Temperature: 24 C
 Limit: (RE)FCC PART 15 CLASS B Power: AC 120V/60Hz Humidity: 53 %
 EUT: MID
 M/N: NS-P16AT08
 Mode:8DPSK 2402
 Note:

| No. | Mk. | Freq. | Reading Level | Correct Factor | Measurement | Limit | Over | Antenna Height | Table Degree | Comment |
|-----|-----|----------|---------------|----------------|-------------|--------|--------|----------------|--------------|---------|
| | | MHz | dBuV | dB | dBuV/m | dBuV/m | dB | cm | degree | |
| 1 | | 178.4100 | 47.14 | -17.17 | 29.97 | 43.50 | -13.53 | QP | | |
| 2 | | 238.5500 | 42.84 | -13.98 | 28.86 | 46.00 | -17.14 | QP | | |
| 3 | * | 255.0400 | 46.37 | -13.23 | 33.14 | 46.00 | -12.86 | QP | | |
| 4 | | 283.1700 | 41.46 | -12.32 | 29.14 | 46.00 | -16.86 | QP | | |
| 5 | | 312.2700 | 37.73 | -11.45 | 26.28 | 46.00 | -19.72 | QP | | |
| 6 | | 356.8900 | 34.79 | -10.57 | 24.22 | 46.00 | -21.78 | QP | | |

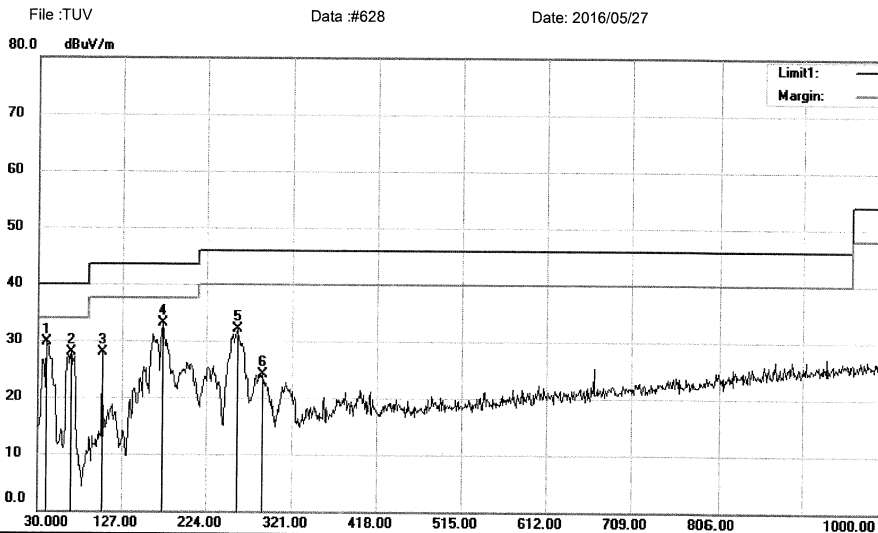
*:Maximum data x:Over limit !:over margin

Operator: KK

File :TUVData :#627

Page: 1

Shenzhen EMTEK Co., Ltd.
 Bldg. 69, Majialong Industry Zone, Nanshan District, Shenzhen, Guangdong, 518052 P. R. China
 www.emtek.com.cn Tel:+86-755-2695 4280 Fax:+86-755-2695 4282


Radiated Emission Measurement


Site 3m Chamber #3 Polarization: **Vertical** Temperature: 24 C
 Limit: (RE)FCC PART 15 CLASS B Power: AC 120V/60Hz Humidity: 53 %
 EUT: MID
 M/N: NS-P16AT08
 Mode:8DPSK 2402
 Note:

| No. | Mk. | Freq. | Reading Level | Correct Factor | Measurement | Limit | Over | Antenna Height | Table Degree | |
|-----|-----|----------|---------------|----------------|-------------|--------|--------|----------------|--------------|---------|
| | | MHz | dBuV | dB | dBuV/m | dBuV/m | dB | cm | degree | Comment |
| 1 | * | 39.7000 | 45.34 | -15.59 | 29.75 | 40.00 | -10.25 | QP | | |
| 2 | | 67.8300 | 45.18 | -17.29 | 27.89 | 40.00 | -12.11 | QP | | |
| 3 | | 103.7200 | 43.29 | -15.30 | 27.99 | 43.50 | -15.51 | QP | | |
| 4 | | 174.5300 | 50.32 | -17.20 | 33.12 | 43.50 | -10.38 | QP | | |
| 5 | | 258.9200 | 45.12 | -13.04 | 32.08 | 46.00 | -13.92 | QP | | |
| 6 | | 288.0200 | 36.22 | -12.11 | 24.11 | 46.00 | -21.89 | QP | | |

*:Maximum data x:Over limit !:over margin

Operator: KK

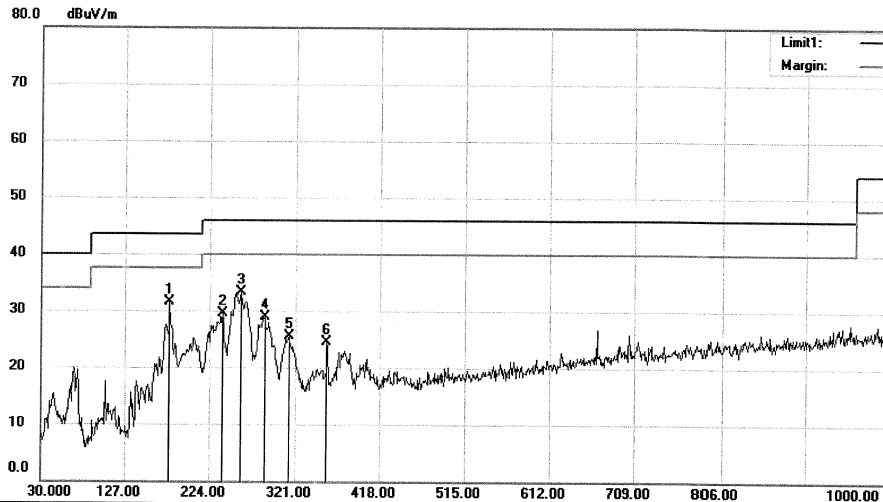
File :TUVData :#628

Page: 1

Shenzhen EMTEK Co., Ltd.
 Bldg. 69, Majialong Industry Zone, Nanshan District, Shenzhen, Guangdong, 518052 P. R. China
 www.emtek.com.cn Tel:+86-755-2695 4280 Fax:+86-755-2695 4282


Radiated Emission Measurement

File :TUV Data :#625 Date: 2016/05/27



Site 3m Chamber #3 Polarization: **Horizontal** Temperature: 24 C
 Limit: (RE)FCC PART 15 CLASS B Power: AC 120V/60Hz Humidity: 53 %
 EUT: MID
 M/N: NS-P16AT08
 Mode:8DPSK 2441
 Note:

| No. | Mk. | Freq. | Reading Level | Correct Factor | Measurement | Limit | Over | Antenna Height | Table Degree | Comment |
|-----|-----|----------|---------------|----------------|-------------|--------|--------|----------------|--------------|---------|
| | | MHz | dBuV | dB | dBuV/m | dBuV/m | dB | cm | degree | |
| 1 | * | 178.4100 | 48.76 | -17.17 | 31.59 | 43.50 | -11.91 | QP | | |
| 2 | | 238.5500 | 43.58 | -13.98 | 29.60 | 46.00 | -16.40 | QP | | |
| 3 | | 258.9200 | 46.26 | -13.04 | 33.22 | 46.00 | -12.78 | QP | | |
| 4 | | 286.0800 | 41.15 | -12.19 | 28.96 | 46.00 | -17.04 | QP | | |
| 5 | | 313.2400 | 36.85 | -11.43 | 25.42 | 46.00 | -20.58 | QP | | |
| 6 | | 356.8900 | 35.13 | -10.57 | 24.56 | 46.00 | -21.44 | QP | | |

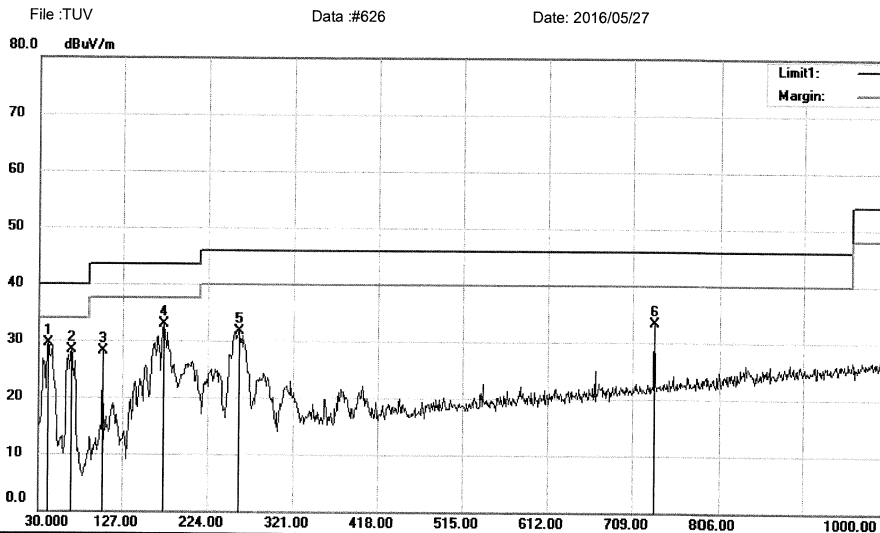
*:Maximum data x:Over limit !:over margin

Operator: KK

File :TUVData :#625

Page: 1

Shenzhen EMTEK Co., Ltd.
 Bldg. 69, Majialong Industry Zone, Nanshan District, Shenzhen, Guangdong, 518052 P. R. China
 www.emtek.com.cn Tel:+86-755-2695 4280 Fax:+86-755-2695 4282


Radiated Emission Measurement


Site 3m Chamber #3 Polarization: **Vertical** Temperature: 24 C
 Limit: (RE)FCC PART 15 CLASS B Power: AC 120V/60Hz Humidity: 53 %
 EUT: MID
 M/N: NS-P16AT08
 Mode:8DPSK 2441
 Note:

| No. | Mk. | Freq. | Reading Level | Correct Factor | Measurement | Limit | Over | Antenna Height | Table Degree | Comment |
|-----|-----|----------|---------------|----------------|-------------|--------|--------|----------------|--------------|---------|
| | | MHz | dBuV | dB | dBuV/m | dBuV/m | dB | cm | degree | |
| 1 | * | 40.6700 | 44.94 | -15.34 | 29.60 | 40.00 | -10.40 | QP | | |
| 2 | | 67.8300 | 45.59 | -17.29 | 28.30 | 40.00 | -11.70 | QP | | |
| 3 | | 103.7200 | 43.37 | -15.30 | 28.07 | 43.50 | -15.43 | QP | | |
| 4 | | 173.5600 | 50.06 | -17.20 | 32.86 | 43.50 | -10.64 | QP | | |
| 5 | | 258.9200 | 44.83 | -13.04 | 31.79 | 46.00 | -14.21 | QP | | |
| 6 | | 734.2200 | 36.98 | -3.76 | 33.22 | 46.00 | -12.78 | QP | | |

*:Maximum data x:Over limit !:over margin

Operator: KK

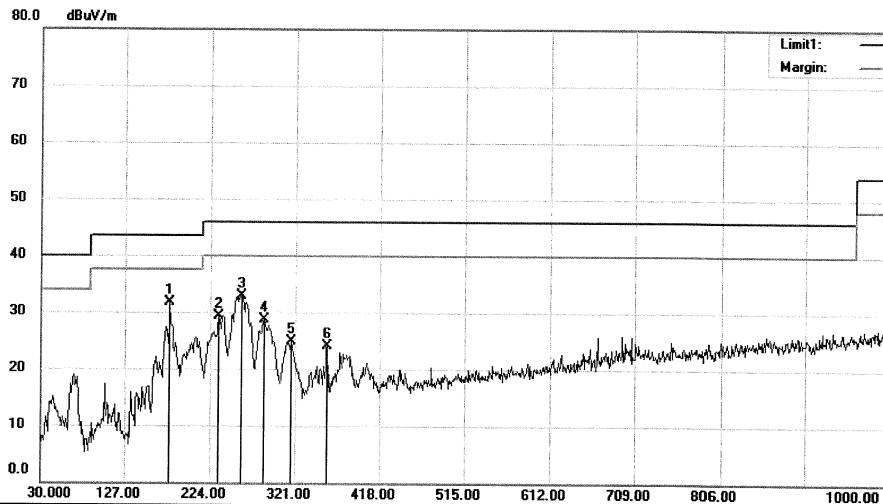
File :TUVData :#626

Page: 1

Shenzhen EMTEK Co., Ltd.
 Bldg. 69, Majialong Industry Zone, Nanshan District, Shenzhen, Guangdong, 518052 P. R. China
 www.emtek.com.cn Tel:+86-755-2695 4280 Fax:+86-755-2695 4282


Radiated Emission Measurement

File :TUV Data :#623 Date: 2016/05/27



Site 3m Chamber #3 Polarization: **Horizontal** Temperature: 24 C
 Limit: (RE)FCC PART 15 CLASS B Power: AC 120V/60Hz Humidity: 53 %
 EUT: MID
 M/N: NS-P16AT08
 Mode:8DPSK 2480
 Note:

| No. | Mk. | Freq. MHz | Reading Level dBuV | Correct Factor dB | Measure- ment dBuV/m | Limit dBuV/m | Over dB | Detector | Antenna Height cm | Table Degree | Comment |
|-----|-----|--------------|--------------------------|-------------------------|----------------------------|-----------------|------------|----------|-------------------------|-----------------|---------|
| 1 | * | 178.4100 | 48.87 | -17.17 | 31.70 | 43.50 | -11.80 | QP | | | |
| 2 | | 233.7000 | 43.47 | -14.12 | 29.35 | 46.00 | -16.65 | QP | | | |
| 3 | | 258.9200 | 45.92 | -13.04 | 32.88 | 46.00 | -13.12 | QP | | | |
| 4 | | 285.1100 | 40.85 | -12.23 | 28.62 | 46.00 | -17.38 | QP | | | |
| 5 | | 316.1500 | 36.25 | -11.39 | 24.86 | 46.00 | -21.14 | QP | | | |
| 6 | | 357.8600 | 34.73 | -10.59 | 24.14 | 46.00 | -21.86 | QP | | | |

*:Maximum data x:Over limit !:over margin

Operator: KK

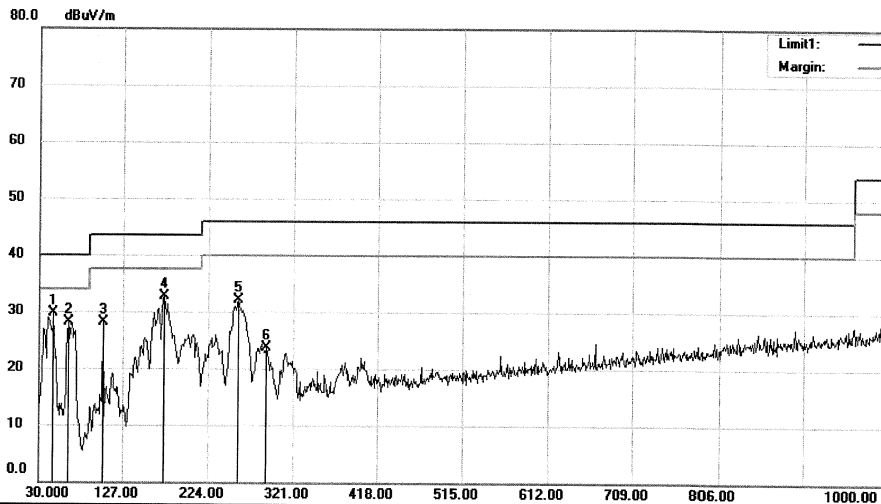
File :TUVData :#623

Page: 1

Shenzhen EMTEK Co., Ltd.
 Bldg. 69, Majialong Industry Zone, Nanshan District, Shenzhen, Guangdong, 518052 P. R. China
 www.emtek.com.cn Tel:+86-755-2695 4280 Fax:+86-755-2695 4282


Radiated Emission Measurement

File :TUV Data :#624 Date: 2016/05/27



Site 3m Chamber #3 Polarization: **Vertical** Temperature: 24 C
 Limit: (RE)FCC PART 15 CLASS B Power: AC 120V/60Hz Humidity: 53 %
 EUT: MID
 M/N: NS-P16AT08
 Mode:8DPSK 2480
 Note:

| No. | Mk. | Freq. | Reading Level | Correct Factor | Measurement | Limit | Over | Antenna Height | Table Degree | Comment |
|-----|-----|----------|---------------|----------------|-------------|--------|--------|----------------|--------------|---------|
| | | MHz | dBuV | dB | dBuV/m | dBuV/m | dB | cm | degree | |
| 1 | * | 46.4900 | 43.68 | -14.00 | 29.68 | 40.00 | -10.32 | QP | | |
| 2 | | 63.9500 | 44.49 | -16.30 | 28.19 | 40.00 | -11.81 | QP | | |
| 3 | | 103.7200 | 43.48 | -15.30 | 28.18 | 43.50 | -15.32 | QP | | |
| 4 | | 173.5600 | 49.98 | -17.20 | 32.78 | 43.50 | -10.72 | QP | | |
| 5 | | 257.9500 | 45.12 | -13.09 | 32.03 | 46.00 | -13.97 | QP | | |
| 6 | | 290.9300 | 35.69 | -11.99 | 23.70 | 46.00 | -22.30 | QP | | |

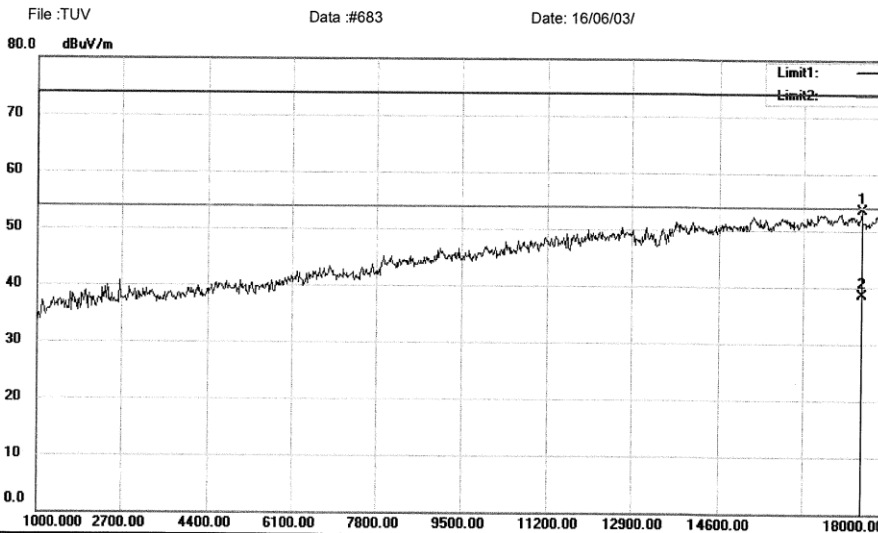
*:Maximum data x:Over limit !:over margin

Operator: KK

File :TUVData :#624

Page: 1

Shenzhen EMTEK Co., Ltd.
 Bldg. 69, Majialong Industry Zone, Nanshan District, Shenzhen, Guangdong, 518052 P. R. China
 www.emtek.com.cn Tel:+86-755-2695 4280 Fax:+86-755-2695 4282


Radiated Emission Measurement


Site 3m Chamber #3 Polarization: **Horizontal** Temperature: 24 C
 Limit: (RE)FCC PART 15 C Power: AC 120V/60Hz Humidity: 53 %
 EUT: MID
 M/N: NS-P16AT08
 Mode:GFSK 2402
 Note:

| No. | Mk. | Freq. | Reading Level | Correct Factor | Measurement | Limit | Over | Antenna Height | Table Degree | Comment |
|-----|-----|----------|---------------|----------------|-------------|--------|--------|----------------|--------------|---------|
| | | MHz | dBuV | dB | dBuV/m | dBuV/m | dB | cm | degree | |
| 1 | | 17456.00 | 57.29 | -3.70 | 53.59 | 74.00 | -20.41 | peak | | |
| 2 | * | 17456.00 | 42.30 | -3.70 | 38.60 | 54.00 | -15.40 | AVG | | |

*:Maximum data x:Over limit !:over margin

Operator: KK

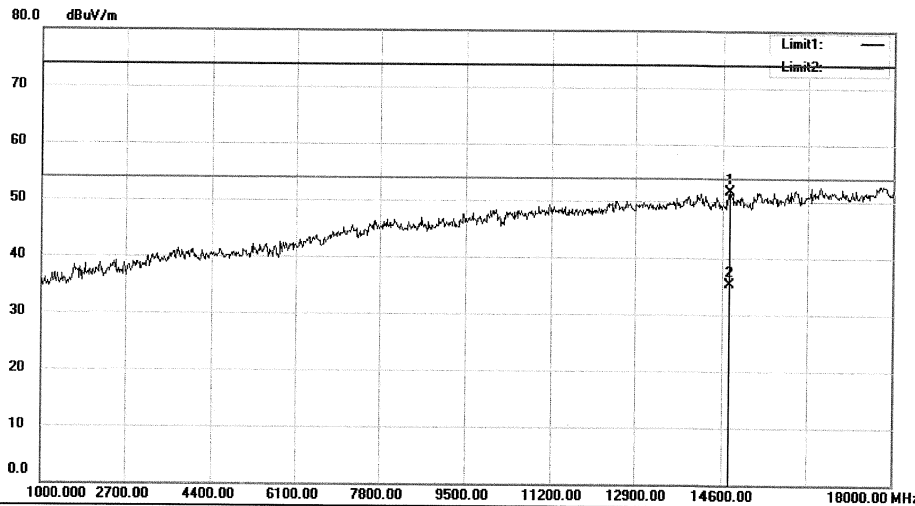
File :TUVData :#683

Page: 1

Shenzhen EMTEK Co., Ltd.
 Bldg. 69, Majialong Industry Zone, Nanshan District, Shenzhen, Guangdong, 518052 P. R. China
 www.emtek.com.cn Tel:+86-755-2695 4280 Fax:+86-755-2695 4282


Radiated Emission Measurement

File :TUV Data :#684 Date: 16/06/03/



Site 3m Chamber #3 Polarization: **Vertical** Temperature: 24 C
 Limit: (RE)FCC PART 15 C Power: AC 120V/60Hz Humidity: 53 %
 EUT: MID
 M/N: NS-P16AT08
 Mode:GFSK 2402
 Note:

| No. | Mk. | Freq. | Reading Level | Correct Factor | Measurement | Limit | Over | Antenna Height | Table Degree | Comment |
|-----|-----|----------|---------------|----------------|-------------|--------|--------|----------------|--------------|---------|
| | | MHz | dBuV | dB | dBuV/m | dBuV/m | dB | cm | degree | |
| 1 | | 14736.00 | 60.80 | -9.13 | 51.67 | 74.00 | -22.33 | peak | | |
| 2 | * | 14736.00 | 44.53 | -9.13 | 35.40 | 54.00 | -18.60 | AVG | | |

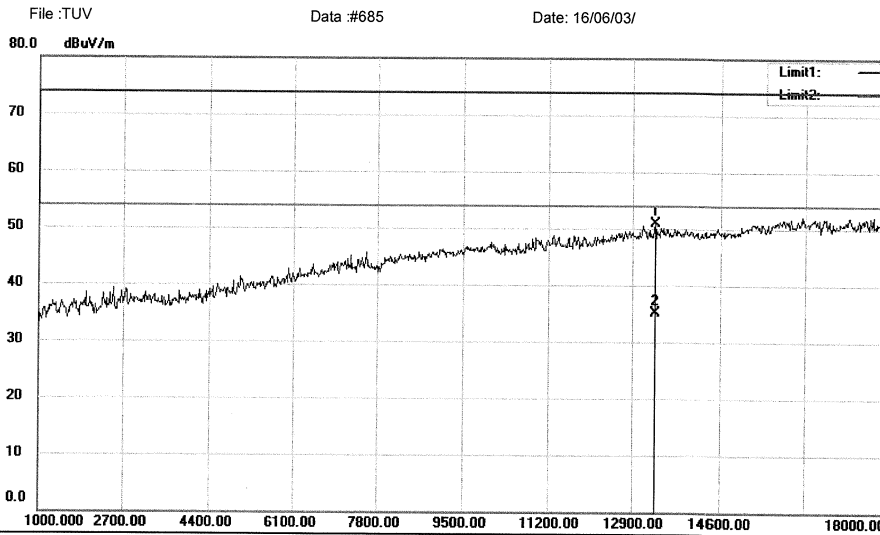
*:Maximum data x:Over limit !:over margin

Operator: KK

File :TUVData :#684

Page: 1

Shenzhen EMTEK Co., Ltd.
 Bldg. 69, Majialong Industry Zone, Nanshan District, Shenzhen, Guangdong, 518052 P. R. China
 www.emtek.com.cn Tel:+86-755-2695 4280 Fax:+86-755-2695 4282


Radiated Emission Measurement


Site 3m Chamber #3 Polarization: **Horizontal** Temperature: 24 C
 Limit: (RE)FCC PART 15 C Power: AC 120V/60Hz Humidity: 53 %
 EUT: MID
 M/N: NS-P16AT08
 Mode:GFSK 2441
 Note:

| No. | Mk. | Freq. | Reading Level | Correct Factor | Measurement | Limit | Over | Antenna Height | Table Degree | |
|-----|-----|----------|---------------|----------------|-------------|--------|--------|----------------|--------------|---------|
| | | MHz | dBuV | dB | dBuV/m | dBuV/m | dB | cm | degree | Comment |
| 1 | | 13359.00 | 61.90 | -10.96 | 50.94 | 74.00 | -23.06 | peak | | |
| 2 | * | 13359.00 | 46.16 | -10.96 | 35.20 | 54.00 | -18.80 | AVG | | |

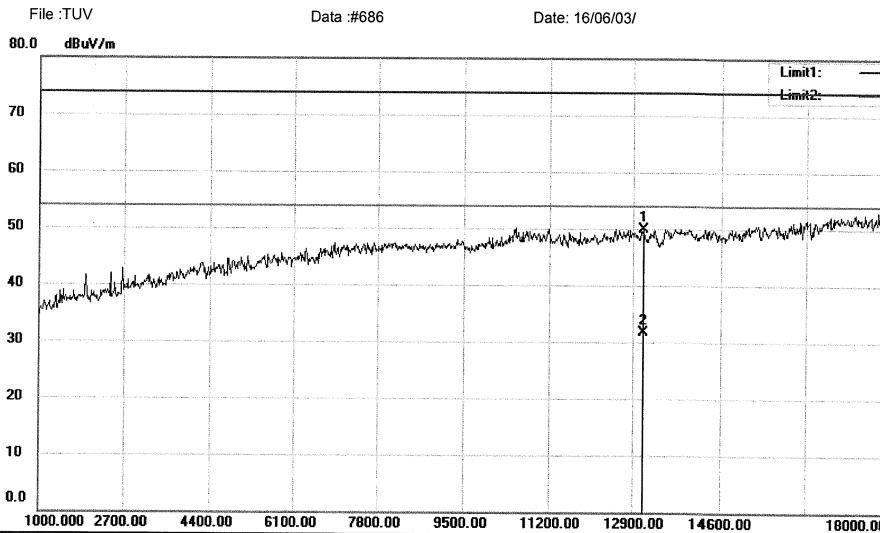
*:Maximum data x:Over limit !:over margin

Operator: KK

File :TUVData #685

Page: 1

Shenzhen EMTEK Co., Ltd.
 Bldg. 69, Majialong Industry Zone, Nanshan District, Shenzhen, Guangdong, 518052 P. R. China
 www.emtek.com.cn Tel:+86-755-2695 4280 Fax:+86-755-2695 4282


Radiated Emission Measurement


Site 3m Chamber #3 Polarization: **Vertical** Temperature: 24 C
 Limit: (RE)FCC PART 15 C Power: AC 120V/60Hz Humidity: 53 %
 EUT: MID
 M/N: NS-P16AT08
 Mode:GFSK 2441
 Note:

| No. | Mk. | Freq. | Reading Level | Correct Factor | Measurement | Limit | Over | Antenna Height | Table Degree | Comment |
|-----|-----|----------|---------------|----------------|-------------|--------|--------|----------------|--------------|---------|
| | | MHz | dBuV | dB | dBuV/m | dBuV/m | dB | cm | degree | |
| 1 | | 13104.00 | 62.20 | -12.21 | 49.99 | 74.00 | -24.01 | peak | | |
| 2 | * | 13104.00 | 43.91 | -12.21 | 31.70 | 54.00 | -22.30 | AVG | | |

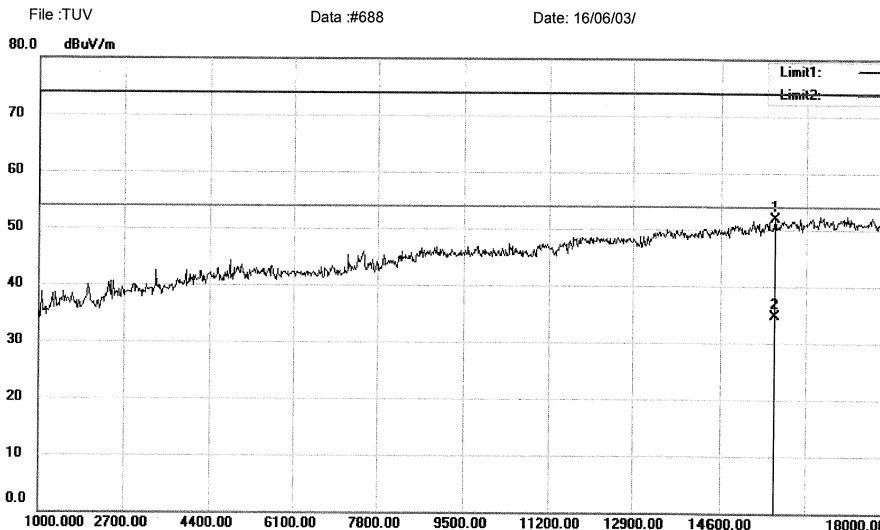
*:Maximum data x:Over limit !:over margin

Operator: KK

File :TUVData :#686

Page: 1

Shenzhen EMTEK Co., Ltd.
 Bldg. 69, Majialong Industry Zone, Nanshan District, Shenzhen, Guangdong, 518052 P. R. China
 www.emtek.com.cn Tel:+86-755-2695 4280 Fax:+86-755-2695 4282


Radiated Emission Measurement


Site 3m Chamber #3 Polarization: **Horizontal** Temperature: 24 C
 Limit: (RE)FCC PART 15 C Power: AC 120V/60Hz Humidity: 53 %
 EUT: MID
 M/N: NS-P16AT08
 Mode:GFSK 2480
 Note:

| No. | Mk. | Freq. | Reading Level | Correct Factor | Measurement | Limit | Over | Antenna Height | Table Degree | Comment |
|-----|-----|----------|---------------|----------------|-------------|--------|--------|----------------|--------------|---------|
| | | MHz | dBuV | dB | dBuV/m | dBuV/m | dB | cm | degree | |
| 1 | | 15671.00 | 63.70 | -11.71 | 51.99 | 74.00 | -22.01 | peak | | |
| 2 | * | 15671.00 | 46.41 | -11.71 | 34.70 | 54.00 | -19.30 | AVG | | |

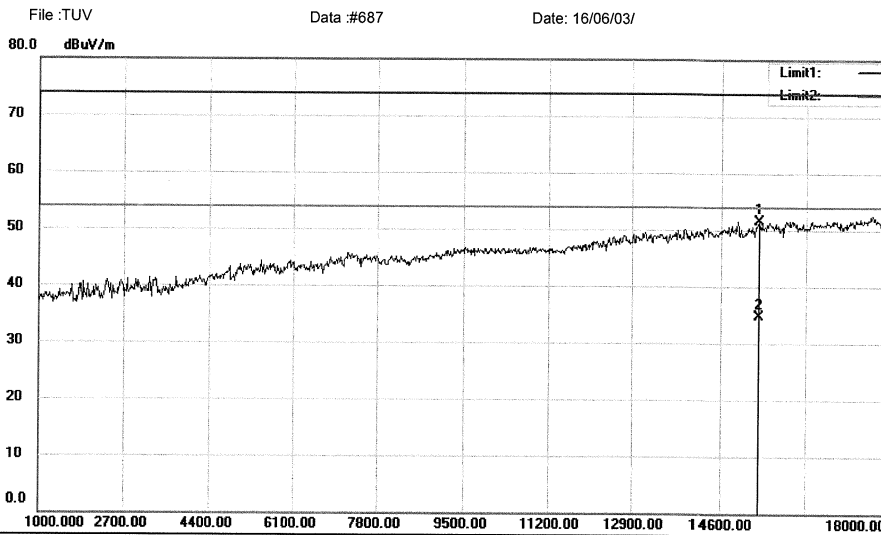
*:Maximum data x:Over limit !:over margin

Operator: KK

File :TUVData :#688

Page: 1

Shenzhen EMTEK Co., Ltd.
 Bldg. 69, Majialong Industry Zone, Nanshan District, Shenzhen, Guangdong, 518052 P. R. China
 www.emtek.com.cn Tel:+86-755-2695 4280 Fax:+86-755-2695 4282


Radiated Emission Measurement


Site 3m Chamber #3 Polarization: **Vertical** Temperature: 24 C
 Limit: (RE)FCC PART 15 C Power: AC 120V/60Hz Humidity: 53 %
 EUT: MID
 M/N: NS-P16AT08
 Mode:GFSK 2480
 Note:

| No. | Mk. | Freq. | Reading Level | Correct Factor | Measurement | Limit | Over | Antenna Height | Table Degree | | |
|-----|-----|----------|---------------|----------------|-------------|--------|--------|----------------|--------------|--------|---------|
| | | MHz | dBuV | dB | dBuV/m | dBuV/m | dB | Detector | cm | degree | Comment |
| 1 | | 15365.00 | 62.22 | -10.74 | 51.48 | 74.00 | -22.52 | peak | | | |
| 2 | * | 15365.00 | 45.54 | -10.74 | 34.80 | 54.00 | -19.20 | AVG | | | |

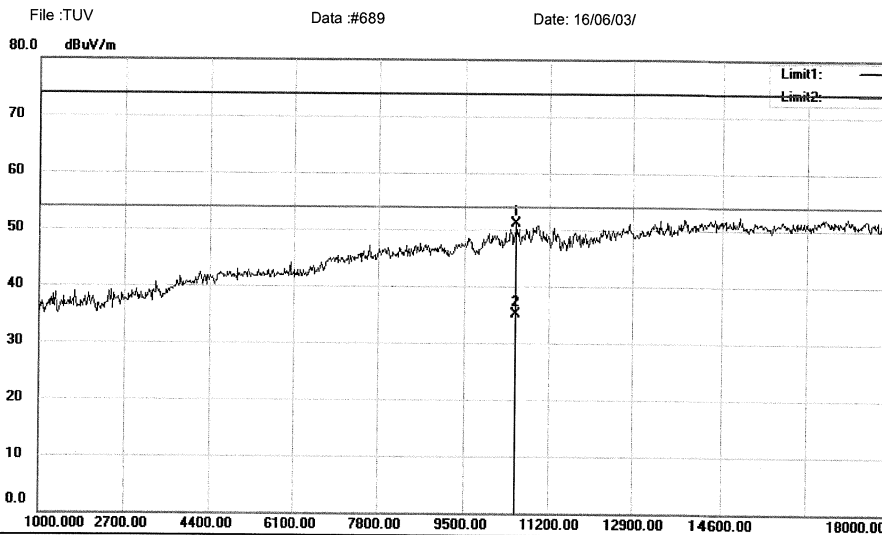
*:Maximum data x:Over limit !:over margin

Operator: KK

File :TUVData :#687

Page: 1

Shenzhen EMTEK Co., Ltd.
 Bldg. 69, Majialong Industry Zone, Nanshan District, Shenzhen, Guangdong, 518052 P. R. China
 www.emtek.com.cn Tel: +86-755-2695 4280 Fax: +86-755-2695 4282


Radiated Emission Measurement


Site 3m Chamber #3 Polarization: **Horizontal** Temperature: 24 C
 Limit: (RE)FCC PART 15 C Power: AC 120V/60Hz Humidity: 53 %
 EUT: MID
 M/N: NS-P16AT08
 Mode:DQPSK 2402
 Note:

| No. | Mk. | Freq. | Reading Level | Correct Factor | Measurement | Limit | Over | Antenna Height | Table Degree | Comment |
|-----|-----|----------|---------------|----------------|-------------|--------|--------|----------------|--------------|---------|
| | | MHz | dBuV | dB | dBuV/m | dBuV/m | dB | cm | degree | |
| 1 | | 10537.00 | 65.63 | -14.54 | 51.09 | 74.00 | -22.91 | peak | | |
| 2 | * | 10537.00 | 49.74 | -14.54 | 35.20 | 54.00 | -18.80 | AVG | | |

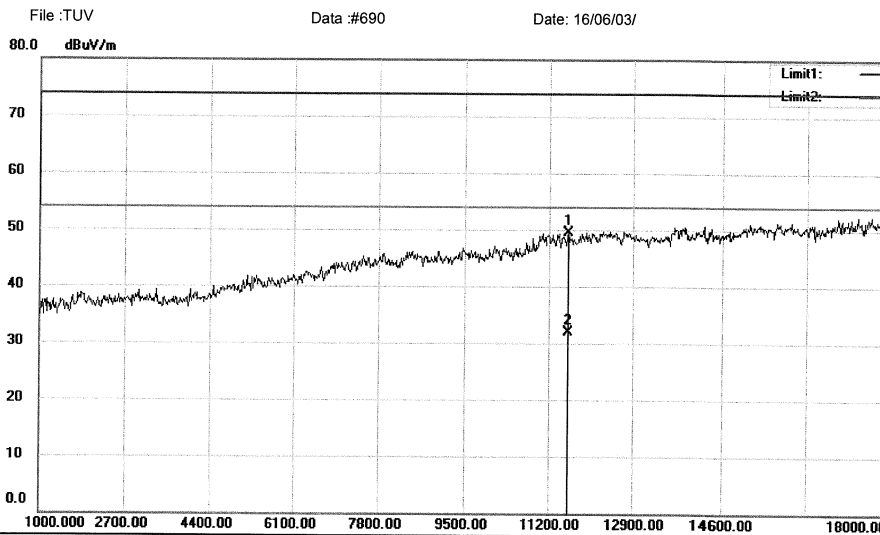
*:Maximum data x:Over limit !:over margin

Operator: KK

File :TUVData :#689

Page: 1

Shenzhen EMTEK Co., Ltd.
 Bldg. 69, Majialong Industry Zone, Nanshan District, Shenzhen, Guangdong, 518052 P. R. China
 www.emtek.com.cn Tel:+86-755-2695 4280 Fax:+86-755-2695 4282


Radiated Emission Measurement


Site 3m Chamber #3 Polarization: **Vertical** Temperature: 24 C
 Limit: (RE)FCC PART 15 C Power: AC 120V/60Hz Humidity: 53 %
 EUT: MID
 M/N: NS-P16AT08
 Mode:DQPSK 2402
 Note:

| No. | Mk. | Freq. | Reading Level | Correct Factor | Measurement | Limit | Over | Antenna Height | Table Degree | Comment |
|-----|-----|----------|---------------|----------------|-------------|--------|--------|----------------|--------------|---------|
| | | MHz | dBuV | dB | dBuV/m | dBuV/m | dB | cm | degree | |
| 1 | | 11591.00 | 63.04 | -13.47 | 49.57 | 74.00 | -24.43 | peak | | |
| 2 | * | 11591.00 | 45.37 | -13.47 | 31.90 | 54.00 | -22.10 | AVG | | |

*:Maximum data x:Over limit !:over margin

Operator: KK

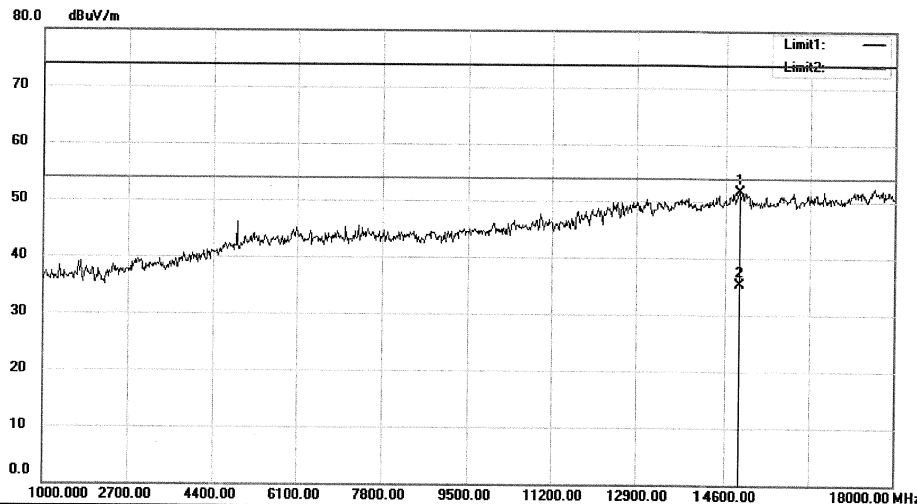
File :TUVData :#690

Page: 1

Shenzhen EMTEK Co., Ltd.
 Bldg. 69, Majialong Industry Zone, Nanshan District, Shenzhen, Guangdong, 518052 P. R. China
 www.emtek.com.cn Tel: +86-755-2695 4280 Fax: +86-755-2695 4282


Radiated Emission Measurement

File :TUV Data :#692 Date: 16/06/03/



Site 3m Chamber #3 Polarization: **Horizontal** Temperature: 24 C
 Limit: (RE)FCC PART 15 C Power: AC 120V/60Hz Humidity: 53 %
 EUT: MID
 M/N: NS-P16AT08
 Mode:DQPSK 2441
 Note:

| No. | Mk. | Freq. | Reading Level | Correct Factor | Measurement | Limit | Over | Antenna Height | Table Degree | Comment |
|-----|-----|----------|---------------|----------------|-------------|--------|--------|----------------|--------------|---------|
| | | MHz | dBuV | dB | dBuV/m | dBuV/m | dB | cm | degree | |
| 1 | | 14872.00 | 61.15 | -9.36 | 51.79 | 74.00 | -22.21 | peak | | |
| 2 | * | 14872.00 | 44.76 | -9.36 | 35.40 | 54.00 | -18.60 | AVG | | |

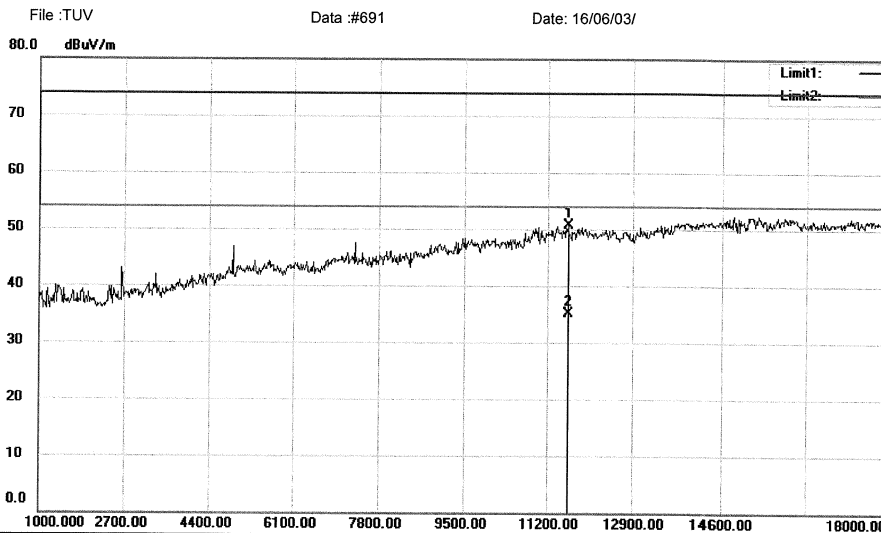
*:Maximum data x:Over limit !:over margin

Operator: KK

File :TUVData :#692

Page: 1

Shenzhen EMTEK Co., Ltd.
 Bldg. 69, Majialong Industry Zone, Nanshan District, Shenzhen, Guangdong, 518052 P. R. China
 www.emtek.com.cn Tel: +86-755-2695 4280 Fax: +86-755-2695 4282


Radiated Emission Measurement


Site 3m Chamber #3 Polarization: **Vertical** Temperature: 24 C
 Limit: (RE)FCC PART 15 C Power: AC 120V/60Hz Humidity: 53 %
 EUT: MID
 M/N: NS-P16AT08
 Mode:DQPSK 2441
 Note:

| No. | Mk. | Freq. | Reading Level | Correct Factor | Measurement | Limit | Over | Antenna Height | Table Degree | Comment |
|-----|-----|----------|---------------|----------------|-------------|--------|--------|----------------|--------------|---------|
| | | MHz | dBuV | dB | dBuV/m | dBuV/m | dB | cm | degree | |
| 1 | | 11608.00 | 64.23 | -13.47 | 50.76 | 74.00 | -23.24 | peak | | |
| 2 | * | 11608.00 | 48.67 | -13.47 | 35.20 | 54.00 | -18.80 | AVG | | |

*:Maximum data x:Over limit !:over margin

Operator: KK

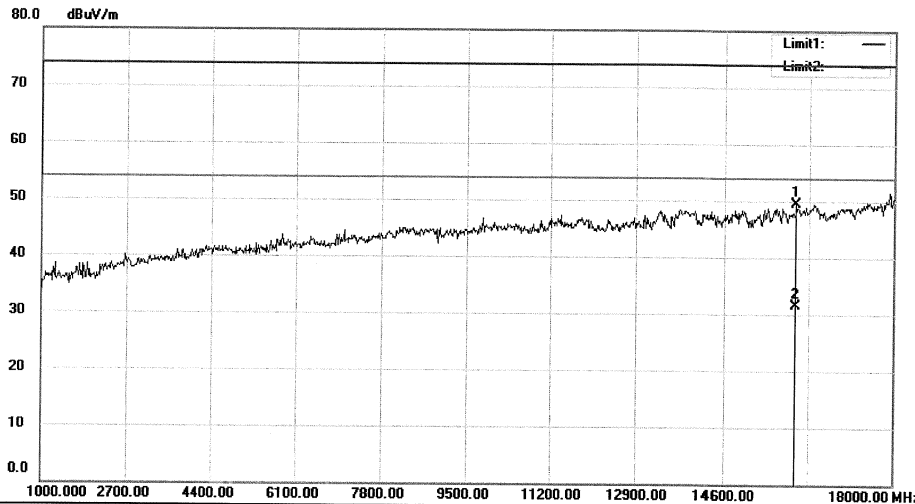
File :TUVData :#691

Page: 1

Shenzhen EMTEK Co., Ltd.
 Bldg. 69, Majialong Industry Zone, Nanshan District, Shenzhen, Guangdong, 518052 P. R. China
 www.emtek.com.cn Tel:+86-755-2695 4280 Fax:+86-755-2695 4282


Radiated Emission Measurement

File :TUV Data :#694 Date: 16/06/03/



Site 3m Chamber #3 Polarization: **Horizontal** Temperature: 24 C
 Limit: (RE)FCC PART 15 C Power: AC 120V/60Hz Humidity: 53 %
 EUT: MID
 M/N: NS-P16AT08
 Mode:DQPSK 2480
 Note:

| No. | Mk. | Freq. | Reading Level | Correct Factor | Measurement | Limit | Over | Antenna Height | Table Degree | |
|-----|-----|----------|---------------|----------------|-------------|--------|--------|----------------|--------------|---------|
| | | MHz | dBuV | dB | dBuV/m | dBuV/m | dB | cm | degree | Comment |
| 1 | | 16045.00 | 62.05 | -12.59 | 49.46 | 74.00 | -24.54 | peak | | |
| 2 | * | 16045.00 | 44.19 | -12.59 | 31.60 | 54.00 | -22.40 | AVG | | |

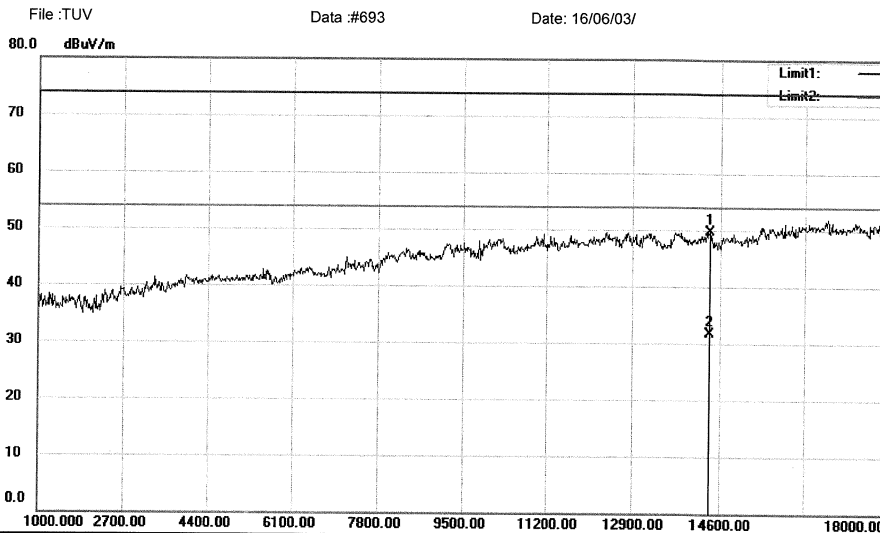
*:Maximum data x:Over limit !:over margin

Operator:

File :TUVData :#694

Page: 1

Shenzhen EMTEK Co., Ltd.
 Bldg. 69, Majialong Industry Zone, Nanshan District, Shenzhen, Guangdong, 518052 P. R. China
 www.emtek.com.cn Tel: +86-755-2695 4280 Fax: +86-755-2695 4282


Radiated Emission Measurement


Site 3m Chamber #3 Polarization: **Vertical** Temperature: 24 C
 Limit: (RE)FCC PART 15 C Power: AC 120V/60Hz Humidity: 53 %
 EUT: MID
 M/N: NS-P16AT08
 Mode:DQPSK 2480
 Note:

| No. | Mk. | Freq. | Reading Level | Correct Factor | Measurement | Limit | Over | Antenna Height | Table Degree | Comment |
|-----|-----|----------|---------------|----------------|-------------|--------|--------|----------------|--------------|---------|
| | | MHz | dBuV | dB | dBuV/m | dBuV/m | dB | cm | degree | |
| 1 | | 14379.00 | 58.12 | -8.49 | 49.63 | 74.00 | -24.37 | peak | | |
| 2 | * | 14379.00 | 40.19 | -8.49 | 31.70 | 54.00 | -22.30 | AVG | | |

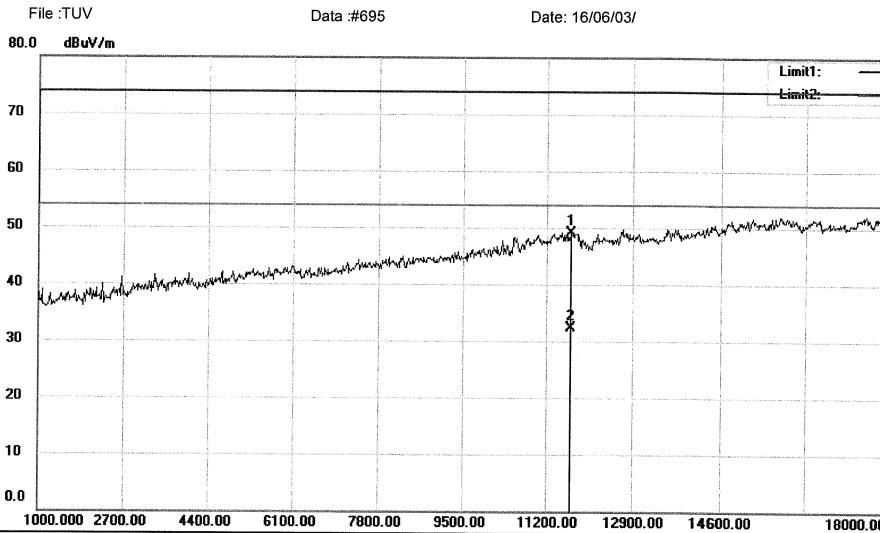
*:Maximum data x:Over limit !:over margin

Operator:

File :TUV\Data :#693

Page: 1

Shenzhen EMTEK Co., Ltd.
 Bldg. 69, Majialong Industry Zone, Nanshan District, Shenzhen, Guangdong, 518052 P. R. China
 www.emtek.com.cn Tel: +86-755-2695 4280 Fax: +86-755-2695 4282


Radiated Emission Measurement


Site 3m Chamber #3 Polarization: **Horizontal** Temperature: 24 C
 Limit: (RE)FCC PART 15 C Power: AC 120V/60Hz Humidity: 53 %
 EUT: MID
 M/N: NS-P16AT08
 Mode: 8DPSK 2402
 Note:

| No. | Mk. | Freq. | Reading Level | Correct Factor | Measurement | Limit | Over | Antenna Height | Table Degree | Comment |
|-----|-----|----------|---------------|----------------|-------------|--------|--------|----------------|--------------|---------|
| | | MHz | dBuV | dB | dBuV/m | dBuV/m | dB | cm | degree | |
| 1 | | 11693.00 | 62.56 | -13.48 | 49.08 | 74.00 | -24.92 | peak | | |
| 2 | * | 11693.00 | 45.78 | -13.48 | 32.30 | 54.00 | -21.70 | AVG | | |

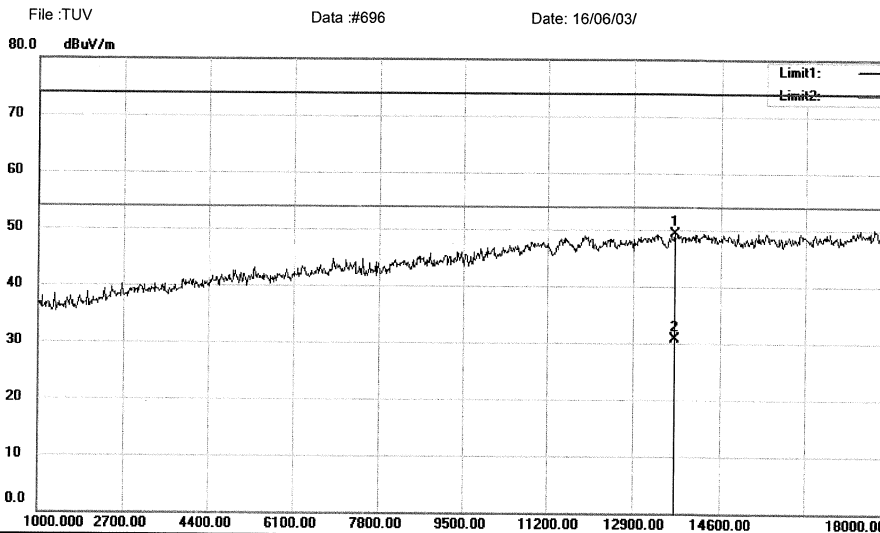
*:Maximum data x:Over limit !:over margin

Operator:

File: TUVData: #695

Page: 1

Shenzhen EMTEK Co., Ltd.
 Bldg. 69, Majialong Industry Zone, Nanshan District, Shenzhen, Guangdong, 518052 P. R. China
 www.emtek.com.cn Tel: +86-755-2695 4280 Fax: +86-755-2695 4282


Radiated Emission Measurement


Site 3m Chamber #3 Polarization: **Vertical** Temperature: 24 C
 Limit: (RE)FCC PART 15 C Power: AC 120V/60Hz Humidity: 53 %
 EUT: MID
 M/N: NS-P16AT08
 Mode:8DPSK 2402
 Note:

| No. | Mk. | Freq. | Reading Level | Correct Factor | Measurement | Limit | Over | Antenna Height | Table Degree | |
|-----|-----|----------|---------------|----------------|-------------|--------|--------|----------------|--------------|---------|
| | | MHz | dBuV | dB | dBuV/m | dBuV/m | dB | cm | degree | Comment |
| 1 | | 13716.00 | 58.55 | -9.21 | 49.34 | 74.00 | -24.66 | peak | | |
| 2 | * | 13716.00 | 40.01 | -9.21 | 30.80 | 54.00 | -23.20 | AVG | | |

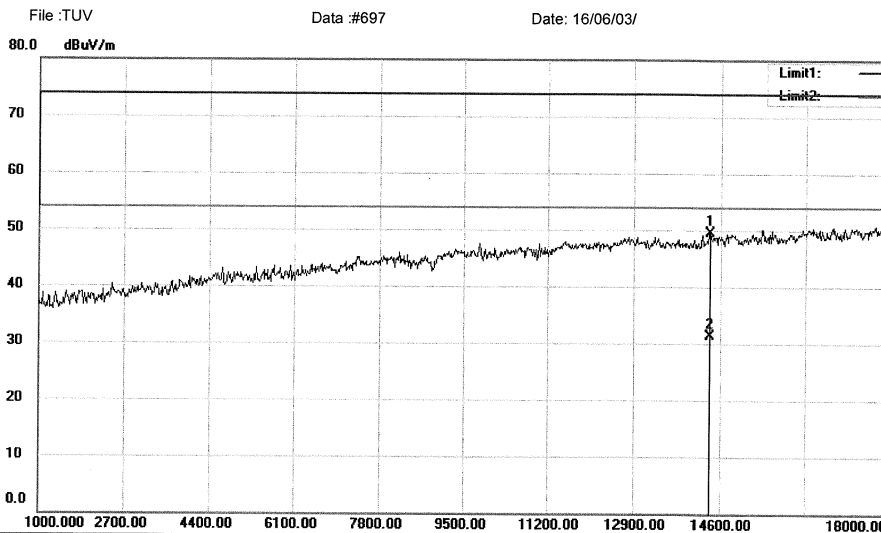
*:Maximum data x:Over limit !:over margin

Operator:

File :TUVData :#696

Page: 1

Shenzhen EMTEK Co., Ltd.
 Bldg. 69, Majialong Industry Zone, Nanshan District, Shenzhen, Guangdong, 518052 P. R. China
 www.emtek.com.cn Tel: +86-755-2695 4280 Fax: +86-755-2695 4282


Radiated Emission Measurement


Site 3m Chamber #3 Polarization: **Horizontal** Temperature: 24 C
 Limit: (RE)FCC PART 15 C Power: AC 120V/60Hz Humidity: 53 %
 EUT: MID
 M/N: NS-P16AT08
 Mode: 8DPSK 2441
 Note:

| No. | Mk. | Freq. | Reading Level | Correct Factor | Measurement | Limit | Over | Antenna Height | Table Degree | Comment |
|-----|-----|----------|---------------|----------------|-------------|--------|--------|----------------|--------------|---------|
| | | MHz | dBuV | dB | dBuV/m | dBuV/m | dB | cm | degree | |
| 1 | | 14379.00 | 58.00 | -8.49 | 49.51 | 74.00 | -24.49 | peak | | |
| 2 | * | 14379.00 | 39.89 | -8.49 | 31.40 | 54.00 | -22.60 | AVG | | |

*:Maximum data x:Over limit !:over margin

Operator:

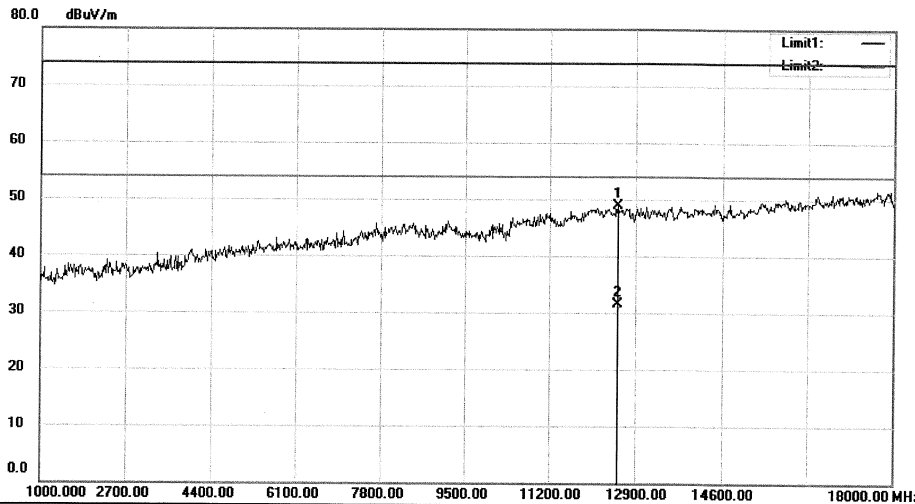
File: TUVData: #697

Page: 1

Shenzhen EMTEK Co., Ltd.
 Bldg. 69, Majialong Industry Zone, Nanshan District, Shenzhen, Guangdong, 518052 P. R. China
 www.emtek.com.cn Tel: +86-755-2695 4280 Fax: +86-755-2695 4282


Radiated Emission Measurement

File :TUV Data :#698 Date: 16/06/03/



Site 3m Chamber #3 Polarization: **Vertical** Temperature: 24 C
 Limit: (RE)FCC PART 15 C Power: AC 120V/60Hz Humidity: 53 %
 EUT: MID
 M/N: NS-P16AT08
 Mode:8DPSK 2441
 Note:

| No. | Mk. | Freq. | Reading Level | Correct Factor | Measurement | Limit | Over | Antenna Height | Table Degree | |
|-----|-----|----------|---------------|----------------|-------------|--------|--------|----------------|--------------|---------|
| | | MHz | dBuV | dB | dBuV/m | dBuV/m | dB | cm | degree | Comment |
| 1 | | 12543.00 | 61.91 | -13.09 | 48.82 | 74.00 | -25.18 | peak | | |
| 2 | * | 12543.00 | 44.69 | -13.09 | 31.60 | 54.00 | -22.40 | AVG | | |

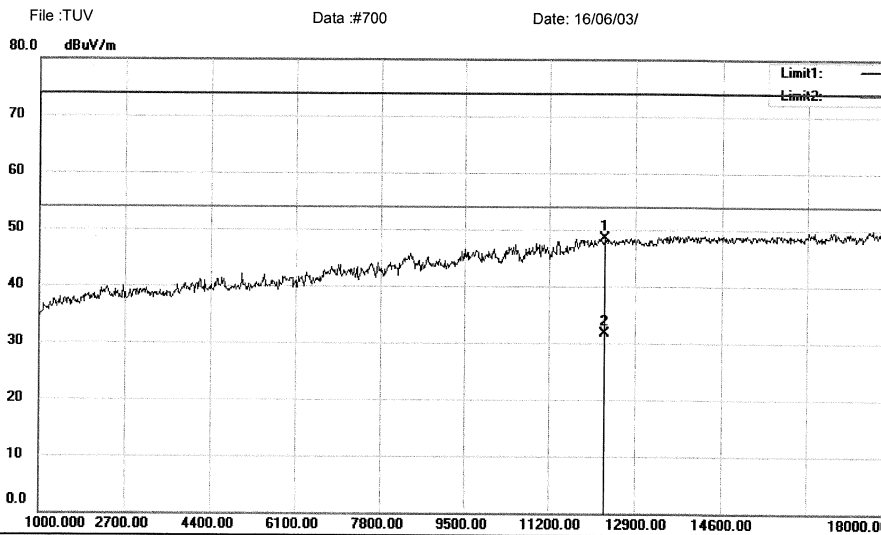
*:Maximum data x:Over limit !:over margin

Operator:

File :TUVData :#698

Page: 1

Shenzhen EMTEK Co., Ltd.
 Bldg. 69, Majialong Industry Zone, Nanshan District, Shenzhen, Guangdong, 518052 P. R. China
 www.emtek.com.cn Tel: +86-755-2695 4280 Fax: +86-755-2695 4282


Radiated Emission Measurement


Site 3m Chamber #3 Polarization: **Horizontal** Temperature: 24 C
 Limit: (RE)FCC PART 15 C Power: AC 120V/60Hz Humidity: 53 %
 EUT: MID
 M/N: NS-P16AT08
 Mode: 8DPSK 2480
 Note:

| No. | Mk. | Freq. | Reading Level | Correct Factor | Measurement | Limit | Over | Antenna Height | Table Degree | |
|-----|-----|----------|---------------|----------------|-------------|--------|--------|----------------|--------------|---------|
| | | MHz | dBuV | dB | dBuV/m | dBuV/m | dB | cm | degree | Comment |
| 1 | | 12305.00 | 61.84 | -13.28 | 48.56 | 74.00 | -25.44 | peak | | |
| 2 | * | 12305.00 | 44.98 | -13.28 | 31.70 | 54.00 | -22.30 | AVG | | |

*:Maximum data x:Over limit !:over margin

Operator: XLX

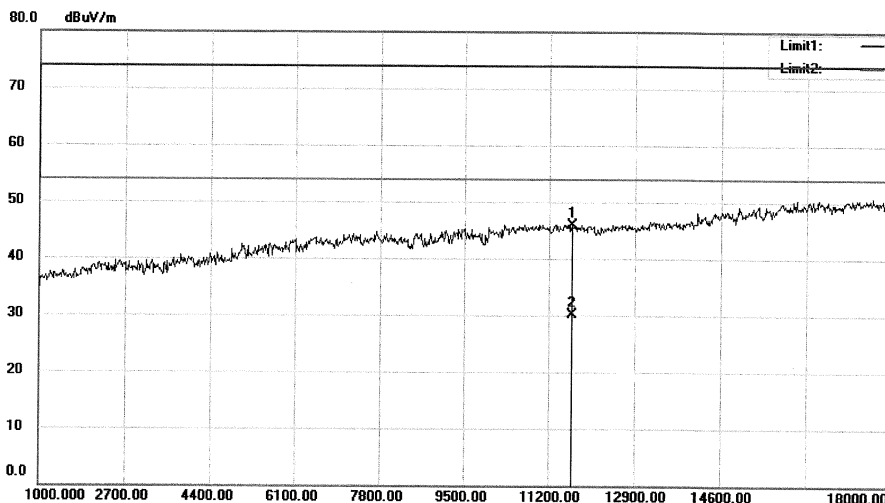
File: TUVData: #700

Page: 1

Shenzhen EMTEK Co., Ltd.
 Bldg. 69, Majialong Industry Zone, Nanshan District, Shenzhen, Guangdong, 518052 P. R. China
 www.emtek.com.cn Tel:+86-755-2695 4280 Fax:+86-755-2695 4282


Radiated Emission Measurement

File :TUV Data :#699 Date: 16/06/03/



Site 3m Chamber #3 Polarization: **Vertical** Temperature: 24 C
 Limit: (RE)FCC PART 15 C Power: AC 120V/60Hz Humidity: 53 %
 EUT: MID
 M/N: NS-P16AT08
 Mode:8DPSK 2480
 Note:

| No. | Mk. | Freq. | Reading Level | Correct Factor | Measurement | Limit | Over | Antenna Height | Table Degree | Comment |
|-----|-----|----------|---------------|----------------|-------------|--------|--------|----------------|--------------|---------|
| | | MHz | dBuV | dB | dBuV/m | dBuV/m | dB | cm | degree | |
| 1 | | 11659.00 | 59.36 | -13.48 | 45.88 | 74.00 | -28.12 | peak | | |
| 2 | * | 11659.00 | 43.68 | -13.48 | 30.20 | 54.00 | -23.80 | AVG | | |

*:Maximum data x:Over limit !:over margin

Operator: XLX

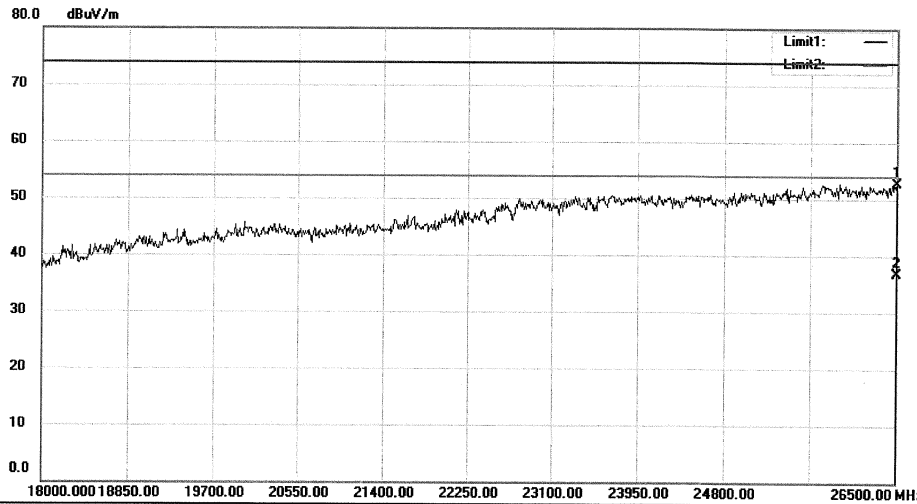
File :TUVData :#699

Page: 1

Shenzhen EMTEK Co., Ltd.
 Bldg. 69, Majialong Industry Zone, Nanshan District, Shenzhen, Guangdong, 518052 P. R. China
 www.emtek.com.cn Tel: +86-755-2695 4280 Fax: +86-755-2695 4282


Radiated Emission Measurement

File: TUV Data: #713 Date: 16/06/03/



Site 3m Chamber #3 Polarization: **Horizontal** Temperature: 24 C
 Limit: (RE)FCC PART 15 C Power: AC 120V/60Hz Humidity: 53 %
 EUT: MID
 M/N: NS-P16AT08
 Mode: GFSK 2402
 Note:

| No. | Mk. | Freq. | Reading Level | Correct Factor | Measurement | Limit | Over | Antenna Height | Table Degree | Comment |
|-----|-----|----------|---------------|----------------|-------------|--------|--------|----------------|--------------|---------|
| | | MHz | dBuV | dB | dBuV/m | dBuV/m | dB | cm | degree | |
| 1 | | 26500.00 | 92.07 | -39.34 | 52.73 | 74.00 | -21.27 | peak | | |
| 2 | * | 26500.00 | 76.14 | -39.34 | 36.80 | 54.00 | -17.20 | AVG | | |

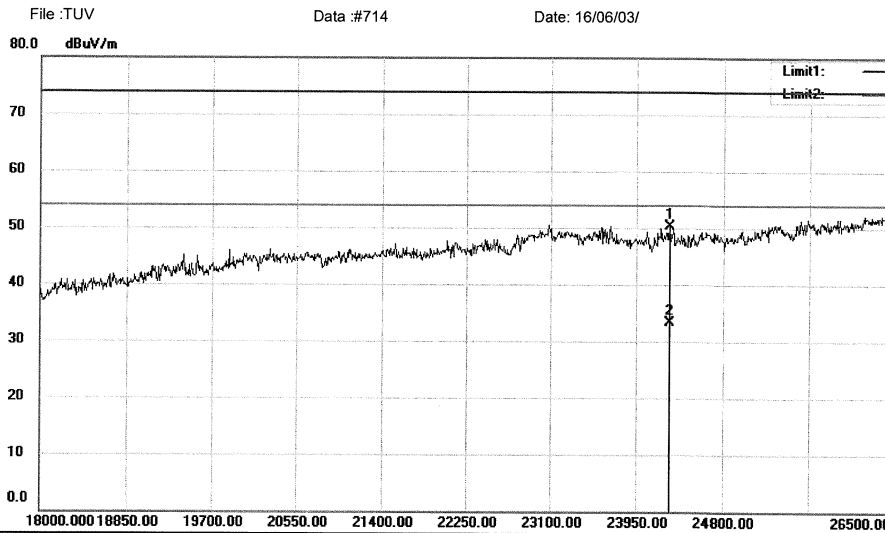
*:Maximum data x:Over limit !:over margin

Operator: KK

File: TUVData: #713

Page: 1

Shenzhen EMTEK Co., Ltd.
 Bldg. 69, Majialong Industry Zone, Nanshan District, Shenzhen, Guangdong, 518052 P. R. China
 www.emtek.com.cn Tel: +86-755-2695 4280 Fax: +86-755-2695 4282


Radiated Emission Measurement


Site 3m Chamber #3 Polarization: **Vertical** Temperature: 24 C
 Limit: (RE)FCC PART 15 C Power: AC 120V/60Hz Humidity: 53 %
 EUT: MID
 M/N: NS-P16AT08
 Mode: GFSK 2402
 Note:

| No. | Mk. | Freq. | Reading Level | Correct Factor | Measurement | Limit | Over | Antenna Height | Table Degree | |
|-----|-----|----------|---------------|----------------|-------------|--------|--------|----------------|--------------|---------|
| | | MHz | dBuV | dB | dBuV/m | dBuV/m | dB | cm | degree | Comment |
| 1 | | 24281.50 | 87.32 | -37.10 | 50.22 | 74.00 | -23.78 | peak | | |
| 2 | * | 24281.50 | 70.50 | -37.10 | 33.40 | 54.00 | -20.60 | AVG | | |

*:Maximum data x:Over limit !:over margin

Operator: KK

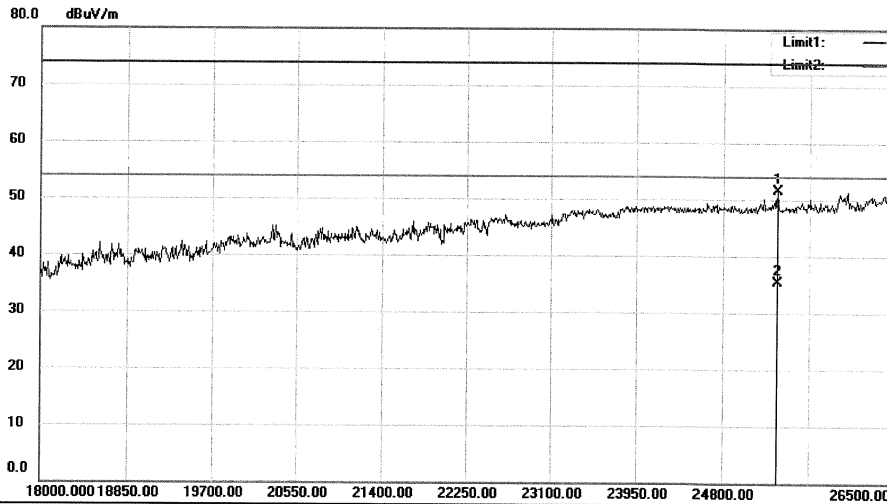
File: TUVData :#714

Page: 1

Shenzhen EMTEK Co., Ltd.
 Bldg. 69, Majialong Industry Zone, Nanshan District, Shenzhen, Guangdong, 518052 P. R. China
 www.emtek.com.cn Tel:+86-755-2695 4280 Fax:+86-755-2695 4282


Radiated Emission Measurement

File :TUV Data #715 Date: 16/06/03/



Site 3m Chamber #3 Polarization: **Horizontal** Temperature: 24 C
 Limit: (RE)FCC PART 15 C Power: AC 120V/60Hz Humidity: 53 %
 EUT: MID
 M/N: NS-P16AT08
 Mode:GFSK 2441
 Note:

| No. | Mk. | Freq. | Reading Level | Correct Factor | Measurement | Limit | Over | Antenna Height | Table Degree | Comment |
|-----|-----|----------|---------------|----------------|-------------|--------|--------|----------------|--------------|---------|
| | | MHz | dBuV | dB | dBuV/m | dBuV/m | dB | cm | degree | |
| 1 | | 25335.50 | 88.20 | -36.60 | 51.60 | 74.00 | -22.40 | peak | | |
| 2 | * | 25335.50 | 72.00 | -36.60 | 35.40 | 54.00 | -18.60 | AVG | | |

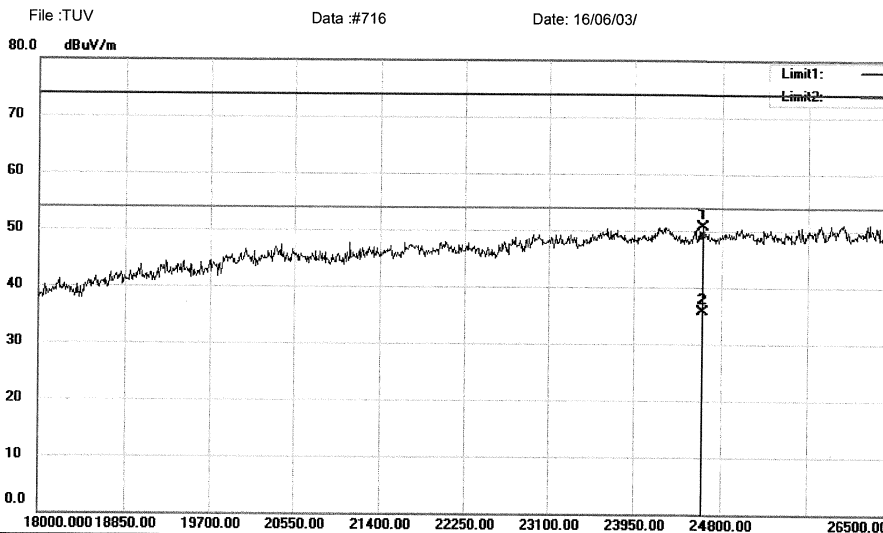
*:Maximum data x:Over limit !:over margin

Operator: KK

File :TUVData :#715

Page: 1

Shenzhen EMTEK Co., Ltd.
 Bldg. 69, Majialong Industry Zone, Nanshan District, Shenzhen, Guangdong, 518052 P. R. China
 www.emtek.com.cn Tel: +86-755-2695 4280 Fax: +86-755-2695 4282


Radiated Emission Measurement


Site 3m Chamber #3 Polarization: **Vertical** Temperature: 24 C
 Limit: (RE)FCC PART 15 C Power: AC 120V/60Hz Humidity: 53 %
 EUT: MID
 M/N: NS-P16AT08
 Mode: GFSK 2441
 Note:

| No. | Mk. | Freq. | Reading Level | Correct Factor | Measurement | Limit | Over | Antenna Height | Table Degree | |
|-----|-----|----------|---------------|----------------|-------------|--------|--------|----------------|--------------|---------|
| | | MHz | dBuV | dB | dBuV/m | dBuV/m | dB | cm | degree | Comment |
| 1 | | 24621.50 | 87.69 | -37.06 | 50.63 | 74.00 | -23.37 | peak | | |
| 2 | * | 24621.50 | 72.86 | -37.06 | 35.80 | 54.00 | -18.20 | AVG | | |

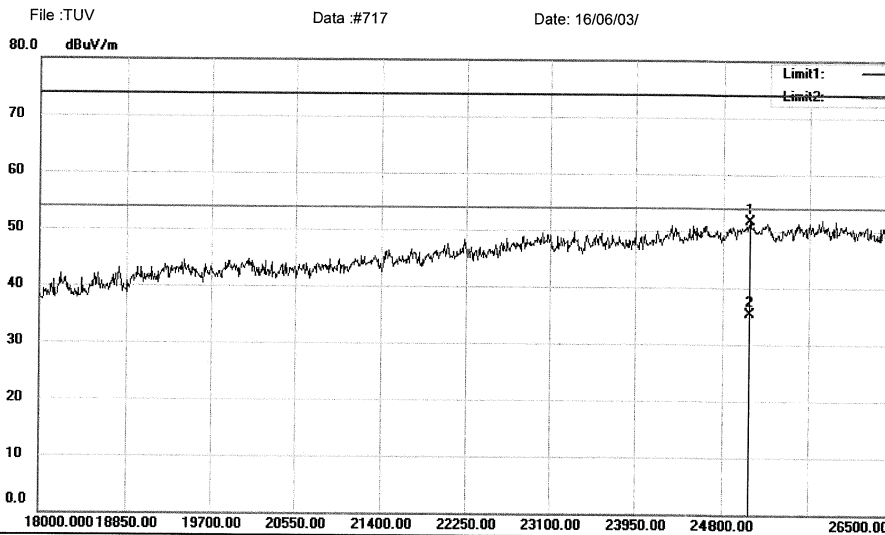
*:Maximum data x:Over limit !:over margin

Operator: KK

File: TUVData: #716

Page: 1

Shenzhen EMTEK Co., Ltd.
 Bldg. 69, Majialong Industry Zone, Nanshan District, Shenzhen, Guangdong, 518052 P. R. China
 www.emtek.com.cn Tel: +86-755-2695 4280 Fax: +86-755-2695 4282


Radiated Emission Measurement


Site 3m Chamber #3 Polarization: **Horizontal** Temperature: 24 C
 Limit: (RE)FCC PART 15 C Power: AC 120V/60Hz Humidity: 53 %
 EUT: MID
 M/N: NS-P16AT08
 Mode: GFSK 2480
 Note:

| No. | Mk. | Freq. | Reading Level | Correct Factor | Measurement | Limit | Over | Antenna Height | Table Degree | Comment |
|-----|-----|----------|---------------|----------------|-------------|--------|--------|----------------|--------------|---------|
| | | MHz | dBuV | dB | dBuV/m | dBuV/m | dB | cm | degree | |
| 1 | | 25063.50 | 88.72 | -36.93 | 51.79 | 74.00 | -22.21 | peak | | |
| 2 | * | 25063.50 | 72.33 | -36.93 | 35.40 | 54.00 | -18.60 | AVG | | |

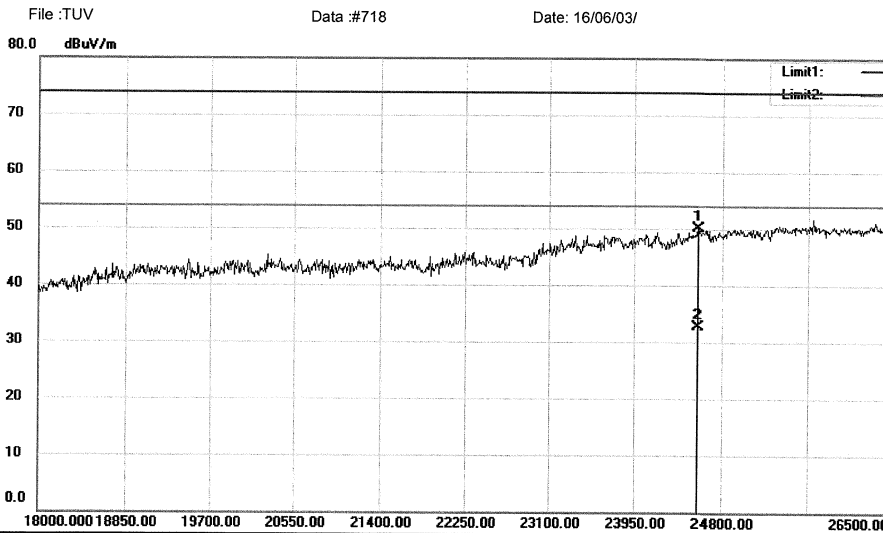
*:Maximum data x:Over limit !:over margin

Operator: KK

File : TUVData : #717

Page: 1

Shenzhen EMTEK Co., Ltd.
 Bldg. 69, Majialong Industry Zone, Nanshan District, Shenzhen, Guangdong, 518052 P. R. China
 www.emtek.com.cn Tel: +86-755-2695 4280 Fax: +86-755-2695 4282


Radiated Emission Measurement


Site 3m Chamber #3 Polarization: **Vertical** Temperature: 24 C
 Limit: (RE)FCC PART 15 C Power: AC 120V/60Hz Humidity: 53 %
 EUT: MID
 M/N: NS-P16AT08
 Mode: GFSK 2480
 Note:

| No. | Mk. | Freq. | Reading Level | Correct Factor | Measurement | Limit | Over | Antenna Height | Table Degree | |
|-----|-----|----------|---------------|----------------|-------------|--------|--------|----------------|--------------|---------|
| | | MHz | dBuV | dB | dBuV/m | dBuV/m | dB | cm | degree | Comment |
| 1 | | 24579.00 | 87.24 | -37.06 | 50.18 | 74.00 | -23.82 | peak | | |
| 2 | * | 24579.00 | 69.76 | -37.06 | 32.70 | 54.00 | -21.30 | AVG | | |

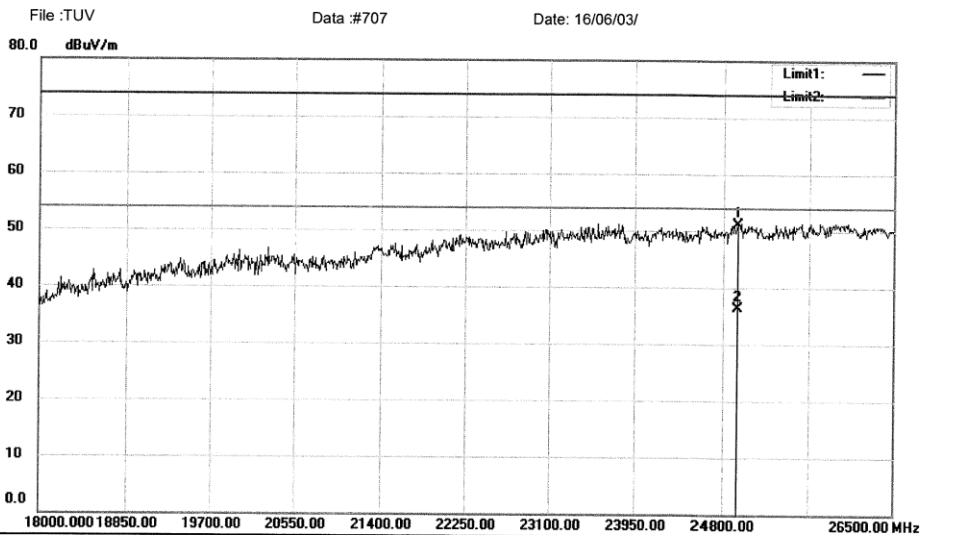
*:Maximum data x:Over limit !:over margin

Operator: KK

File: TUVData.#718

Page: 1

Shenzhen EMTEK Co., Ltd.
 Bldg. 69, Majialong Industry Zone, Nanshan District, Shenzhen, Guangdong, 518052 P. R. China
 www.emtek.com.cn Tel: +86-755-2695 4280 Fax: +86-755-2695 4282


Radiated Emission Measurement


Site 3m Chamber #3 Polarization: **Horizontal** Temperature: 24 C
 Limit: (RE)FCC PART 15 C Power: AC 120V/60Hz Humidity: 53 %
 EUT: MID
 M/N: NS-P16AT08
 Mode: DQPSK 2402
 Note:

| No. | Mk. | Freq. | Reading Level | Correct Factor | Measurement | Limit | Over | Antenna Height | Table Degree | Comment |
|-----|-----|----------|---------------|----------------|-------------|--------|--------|----------------|--------------|---------|
| | | MHz | dBuV | dB | dBuV/m | dBuV/m | dB | cm | degree | |
| 1 | | 24944.50 | 88.18 | -37.02 | 51.16 | 74.00 | -22.84 | peak | | |
| 2 | * | 24944.50 | 73.42 | -37.02 | 36.40 | 54.00 | -17.60 | AVG | | |

*:Maximum data x:Over limit !:over margin

Operator: KK

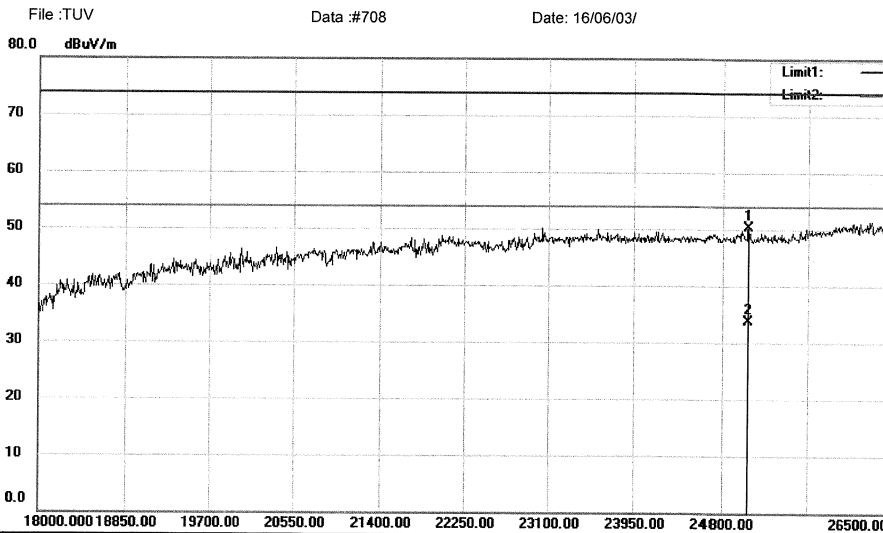
File: TUVData: #707

Page: 1

Shenzhen EMTEK Co., Ltd.
 Bldg. 69, Majialong Industry Zone, Nanshan District, Shenzhen, Guangdong, 518052 P. R. China
 www.emtek.com.cn Tel: +86-755-2695 4280 Fax: +86-755-2695 4282



Radiated Emission Measurement



Site: 3m Chamber #3 Polarization: **Vertical** Temperature: 24 C
 Limit: (RE)FCC PART 15 C Power: AC 120V/60Hz Humidity: 53 %
 EUT: MID
 M/N: NS-P16AT08
 Mode: DQPSK 2402
 Note:

| No. | Mk. | Freq. | Reading Level | Correct Factor | Measurement | Limit | Over | Antenna Height | Table Degree | |
|-----|-----|----------|---------------|----------------|-------------|--------|--------|----------------|--------------|---------|
| | | MHz | dBuV | dB | dBuV/m | dBuV/m | dB | cm | degree | Comment |
| 1 | | 25055.00 | 87.33 | -36.94 | 50.39 | 74.00 | -23.61 | peak | | |
| 2 | * | 25055.00 | 70.74 | -36.94 | 33.80 | 54.00 | -20.20 | AVG | | |

*:Maximum data x:Over limit !:over margin

Operator: KK

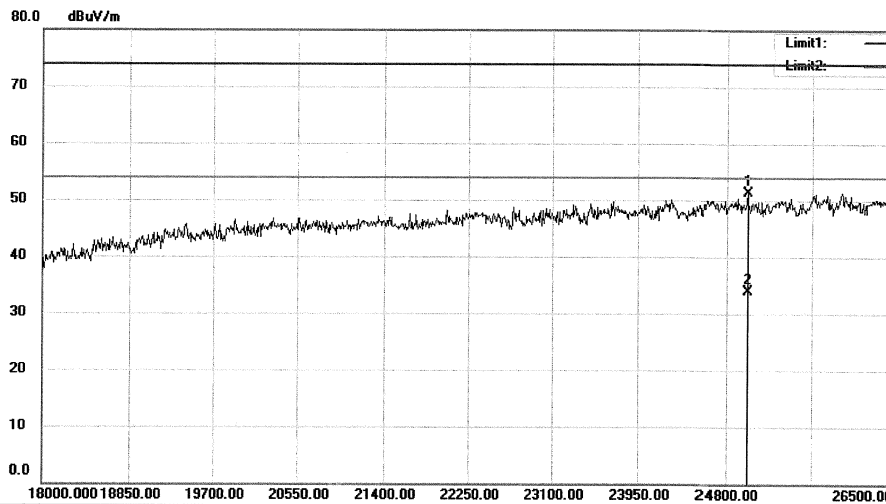
File: TUVData: #708

Page: 1

Shenzhen EMTEK Co., Ltd.
 Bldg. 69, Majialong Industry Zone, Nanshan District, Shenzhen, Guangdong, 518052 P. R. China
 www.emtek.com.cn Tel: +86-755-2695 4280 Fax: +86-755-2695 4282


Radiated Emission Measurement

File :TUV Data :#709 Date: 16/06/03/



Site 3m Chamber #3 Polarization: **Horizontal** Temperature: 24 C
 Limit: (RE)FCC PART 15 C Power: AC 120V/60Hz Humidity: 53 %
 EUT: MID
 M/N: NS-P16AT08
 Mode:DQPSK 2441
 Note:

| No. | Mk. | Freq. | Reading Level | Correct Factor | Measurement | Limit | Over | Antenna Height | Table Degree | | |
|-----|-----|----------|---------------|----------------|-------------|--------|--------|----------------|--------------|--------|---------|
| | | MHz | dBuV | dB | dBuV/m | dBuV/m | dB | Detector | cm | degree | Comment |
| 1 | | 25004.00 | 88.34 | -37.01 | 51.33 | 74.00 | -22.67 | peak | | | |
| 2 | * | 25004.00 | 70.91 | -37.01 | 33.90 | 54.00 | -20.10 | AVG | | | |

*:Maximum data x:Over limit !:over margin

Operator: KK

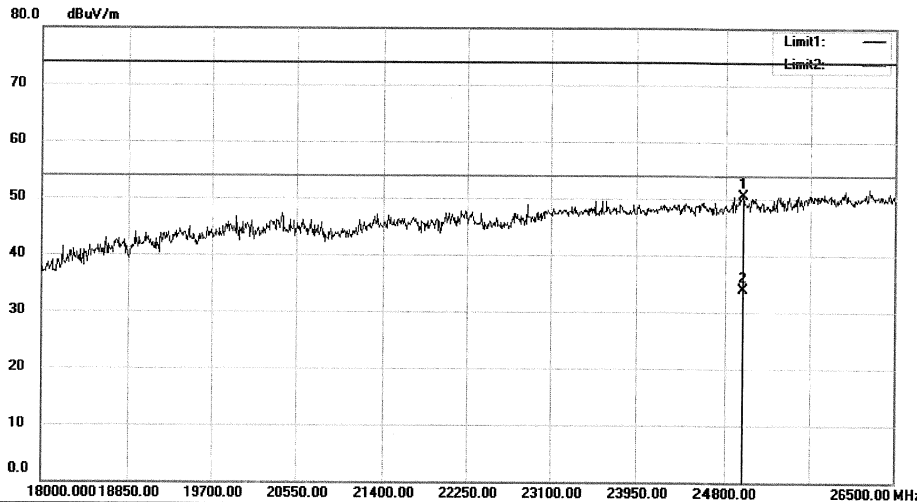
File :TUVData :#709

Page: 1

Shenzhen EMTEK Co., Ltd.
 Bldg. 69, Majialong Industry Zone, Nanshan District, Shenzhen, Guangdong, 518052 P. R. China
 www.emtek.com.cn Tel: +86-755-2695 4280 Fax: +86-755-2695 4282


Radiated Emission Measurement

File: TUV Data: #710 Date: 16/06/03/



Site 3m Chamber #3 Polarization: **Vertical** Temperature: 24 C
 Limit: (RE)FCC PART 15 C Power: AC 120V/60Hz Humidity: 53 %
 EUT: MID
 M/N: NS-P16AT08
 Mode: DQPSK 2441
 Note:

| No. | Mk. | Freq. | Reading Level | Correct Factor | Measurement | Limit | Over | Antenna Height | Table Degree | Comment |
|-----|-----|----------|---------------|----------------|-------------|--------|--------|----------------|--------------|---------|
| | | MHz | dBuV | dB | dBuV/m | dBuV/m | dB | cm | degree | |
| 1 | | 24978.50 | 87.50 | -37.01 | 50.49 | 74.00 | -23.51 | peak | | |
| 2 | * | 24978.50 | 71.01 | -37.01 | 34.00 | 54.00 | -20.00 | AVG | | |

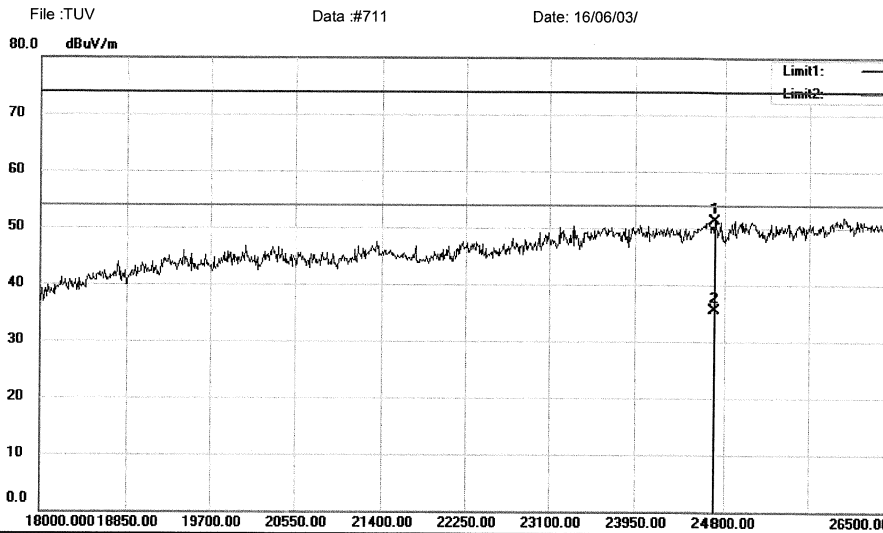
*:Maximum data x:Over limit !:over margin

Operator: KK

File: TUVData :#710

Page: 1

Shenzhen EMTEK Co., Ltd.
 Bldg. 69, Majialong Industry Zone, Nanshan District, Shenzhen, Guangdong, 518052 P. R. China
 www.emtek.com.cn Tel: +86-755-2695 4280 Fax: +86-755-2695 4282


Radiated Emission Measurement


Site 3m Chamber #3 Polarization: **Horizontal** Temperature: 24 C
 Limit: (RE)FCC PART 15 C Power: AC 120V/60Hz Humidity: 53 %
 EUT: MID
 M/N: NS-P16AT08
 Mode: DQPSK 2480
 Note:

| No. | Mk. | Freq. | Reading Level | Correct Factor | Measurement | Limit | Over | Antenna Height | Table Degree | Comment |
|-----|-----|----------|---------------|----------------|-------------|--------|--------|----------------|--------------|---------|
| | | MHz | dBuV | dB | dBuV/m | dBuV/m | dB | cm | degree | |
| 1 | | 24698.00 | 88.41 | -37.05 | 51.36 | 74.00 | -22.64 | peak | | |
| 2 | * | 24698.00 | 72.65 | -37.05 | 35.60 | 54.00 | -18.40 | AVG | | |

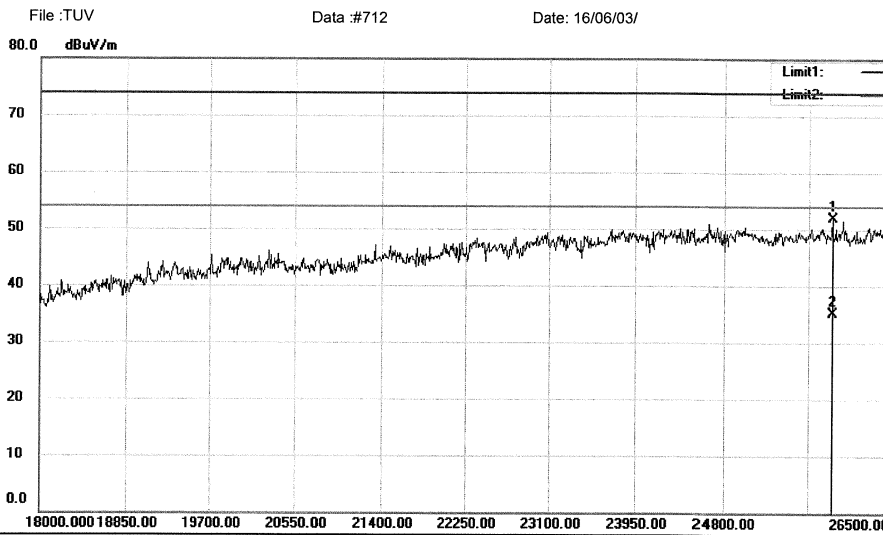
*:Maximum data x:Over limit !:over margin

Operator: KK

File: TUVData.#711

Page: 1

Shenzhen EMTEK Co., Ltd.
 Bldg. 69, Majialong Industry Zone, Nanshan District, Shenzhen, Guangdong, 518052 P. R. China
 www.emtek.com.cn Tel: +86-755-2695 4280 Fax: +86-755-2695 4282


Radiated Emission Measurement


Site 3m Chamber #3 Polarization: **Vertical** Temperature: 24 C
 Limit: (RE)FCC PART 15 C Power: AC 120V/60Hz Humidity: 53 %
 EUT: MID
 M/N: NS-P16AT08
 Mode: DQPSK 2480
 Note:

| No. | Mk. | Freq. | Reading Level | Correct Factor | Measurement | Limit | Over | Antenna Height | Table Degree | |
|-----|-----|----------|---------------|----------------|-------------|--------|--------|----------------|--------------|---------|
| | | MHz | dBuV | dB | dBuV/m | dBuV/m | dB | cm | degree | Comment |
| 1 | | 25888.00 | 87.92 | -35.93 | 51.99 | 74.00 | -22.01 | peak | | |
| 2 | * | 25888.00 | 71.03 | -35.93 | 35.10 | 54.00 | -18.90 | AVG | | |

*:Maximum data x:Over limit !:over margin

Operator: KK

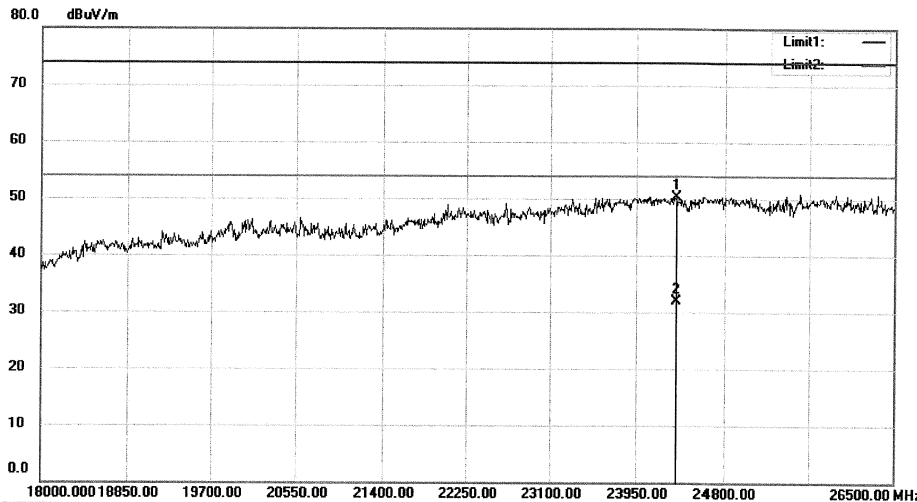
File: TUVData :#712

Page: 1

Shenzhen EMTEK Co., Ltd.
 Bldg. 69, Majialong Industry Zone, Nanshan District, Shenzhen, Guangdong, 518052 P. R. China
 www.emtek.com.cn Tel: +86-755-2695 4280 Fax: +86-755-2695 4282


Radiated Emission Measurement

File: TUV Data: #719 Date: 16/06/03/



Site 3m Chamber #3 Polarization: **Horizontal** Temperature: 24 C
 Limit: (RE)FCC PART 15 C Power: AC 120V/60Hz Humidity: 53 %
 EUT: MID
 M/N: NS-P16AT08
 Mode: 8DPSK 2402
 Note:

| No. | Mk. | Freq. | Reading Level | Correct Factor | Measurement | Limit | Over | Antenna Height | Table Degree |
|-----|-----|----------|---------------|----------------|-------------|--------|--------|----------------|--------------|
| | | MHz | dBuV | dB | dBuV/m | dBuV/m | dB | cm | degree |
| 1 | | 24349.50 | 87.40 | -37.09 | 50.31 | 74.00 | -23.69 | peak | Comment |
| 2 | * | 24349.50 | 68.99 | -37.09 | 31.90 | 54.00 | -22.10 | AVG | |

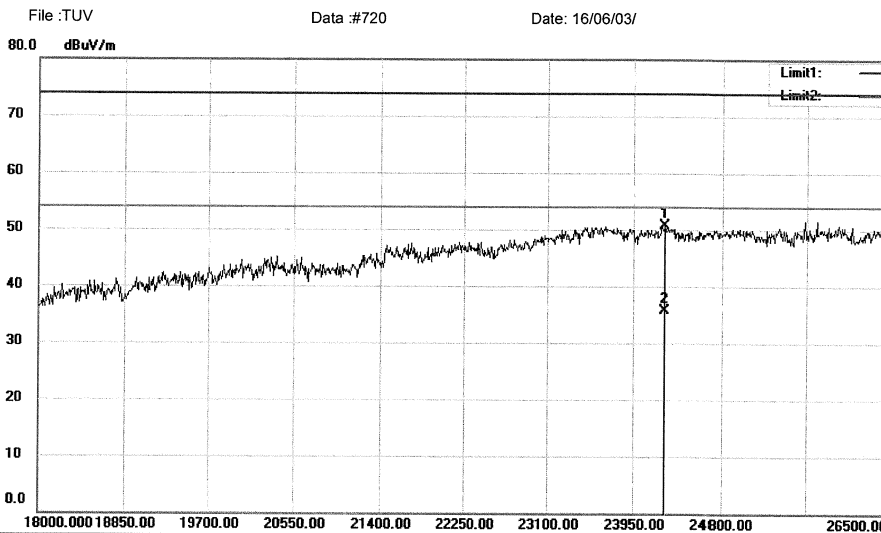
*:Maximum data x:Over limit !:over margin

Operator: KK

File: TUVData :#719

Page: 1

Shenzhen EMTEK Co., Ltd.
 Bldg. 69, Majialong Industry Zone, Nanshan District, Shenzhen, Guangdong, 518052 P. R. China
 www.emtek.com.cn Tel: +86-755-2695 4280 Fax: +86-755-2695 4282


Radiated Emission Measurement


Site 3m Chamber #3 Polarization: **Vertical** Temperature: 24 C
 Limit: (RE)FCC PART 15 C Power: AC 120V/60Hz Humidity: 53 %
 EUT: MID
 M/N: NS-P16AT08
 Mode: 8DPSK 2402
 Note:

| No. | Mk. | Freq. | Reading Level | Correct Factor | Measurement | Limit | Over | Antenna Height | Table Degree | |
|-----|-----|----------|---------------|----------------|-------------|--------|--------|----------------|--------------|---------|
| | | MHz | dBuV | dB | dBuV/m | dBuV/m | dB | cm | degree | Comment |
| 1 | | 24264.50 | 87.76 | -37.10 | 50.66 | 74.00 | -23.34 | peak | | |
| 2 | * | 24264.50 | 72.90 | -37.10 | 35.80 | 54.00 | -18.20 | AVG | | |

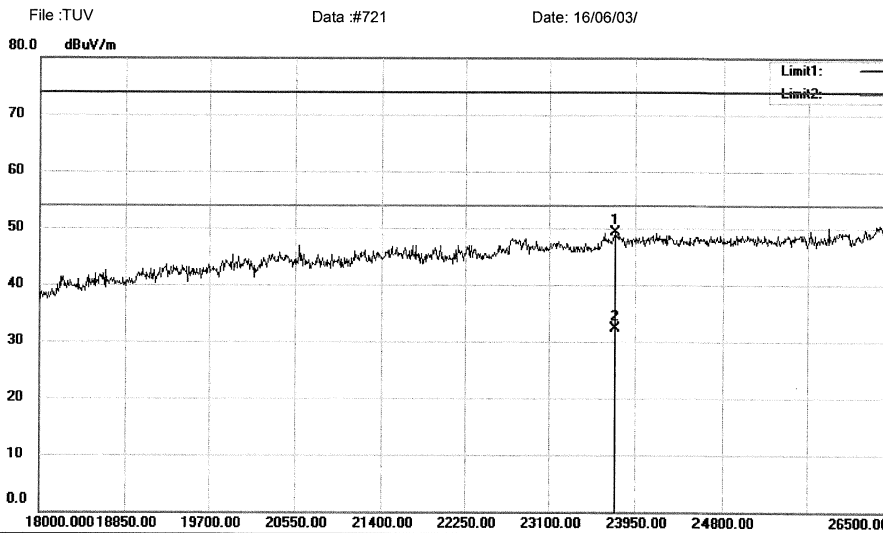
*:Maximum data x:Over limit !:over margin

Operator: KK

File: TUVData: #720

Page: 1

Shenzhen EMTEK Co., Ltd.
 Bldg. 69, Majialong Industry Zone, Nanshan District, Shenzhen, Guangdong, 518052 P. R. China
 www.emtek.com.cn Tel: +86-755-2695 4280 Fax: +86-755-2695 4282


Radiated Emission Measurement


Site 3m Chamber #3 Polarization: **Horizontal** Temperature: 24 C
 Limit: (RE)FCC PART 15 C Power: AC 120V/60Hz Humidity: 53 %
 EUT: MID
 M/N: NS-P16AT08
 Mode: 8DPSK 2441
 Note:

| No. | Mk. | Freq. | Reading Level | Correct Factor | Measurement | Limit | Over | Antenna Height | Table Degree | |
|-----|-----|----------|---------------|----------------|-------------|--------|--------|----------------|--------------|---------|
| | | MHz | dBuV | dB | dBuV/m | dBuV/m | dB | cm | degree | Comment |
| 1 | | 23754.50 | 86.65 | -37.39 | 49.26 | 74.00 | -24.74 | peak | | |
| 2 | * | 23754.50 | 69.69 | -37.39 | 32.30 | 54.00 | -21.70 | AVG | | |

*:Maximum data x:Over limit !:over margin

Operator: KK

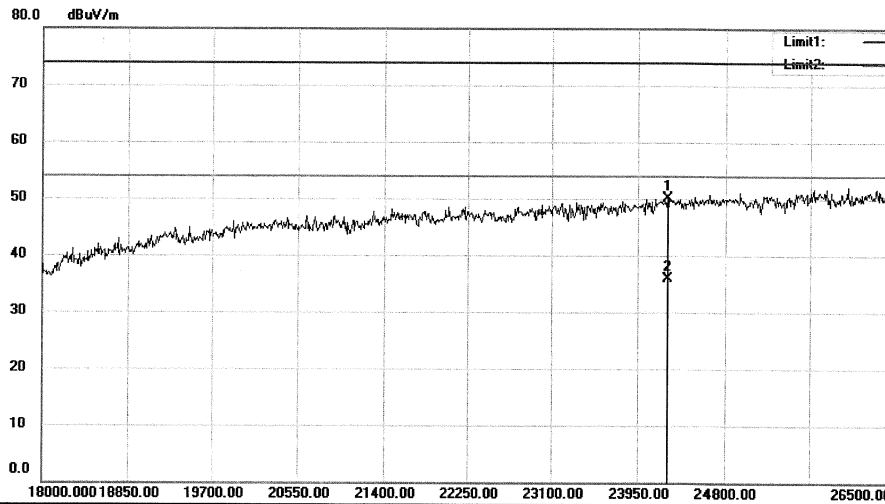
File: TUVData :#721

Page: 1

Shenzhen EMTEK Co., Ltd.
 Bldg. 69, Majialong Industry Zone, Nanshan District, Shenzhen, Guangdong, 518052 P. R. China
 www.emtek.com.cn Tel:+86-755-2695 4280 Fax:+86-755-2695 4282


Radiated Emission Measurement

File :TUV Data :#722 Date: 16/06/03/



Site 3m Chamber #3 Polarization: **Vertical** Temperature: 24 C
 Limit: (RE)FCC PART 15 C Power: AC 120V/60Hz Humidity: 53 %
 EUT: MID
 M/N: NS-P16AT08
 Mode:8DPSK 2441
 Note:

| No. | Mk. | Freq. | Reading Level | Correct Factor | Measurement | Limit | Over | Antenna Height | Table Degree | |
|-----|-----|----------|---------------|----------------|-------------|--------|--------|----------------|--------------|---------|
| | | MHz | dBuV | dB | dBuV/m | dBuV/m | dB | cm | degree | Comment |
| 1 | | 24247.50 | 87.23 | -37.10 | 50.13 | 74.00 | -23.87 | peak | | |
| 2 | * | 24247.50 | 73.00 | -37.10 | 35.90 | 54.00 | -18.10 | AVG | | |

*:Maximum data x:Over limit !:over margin

Operator: KK

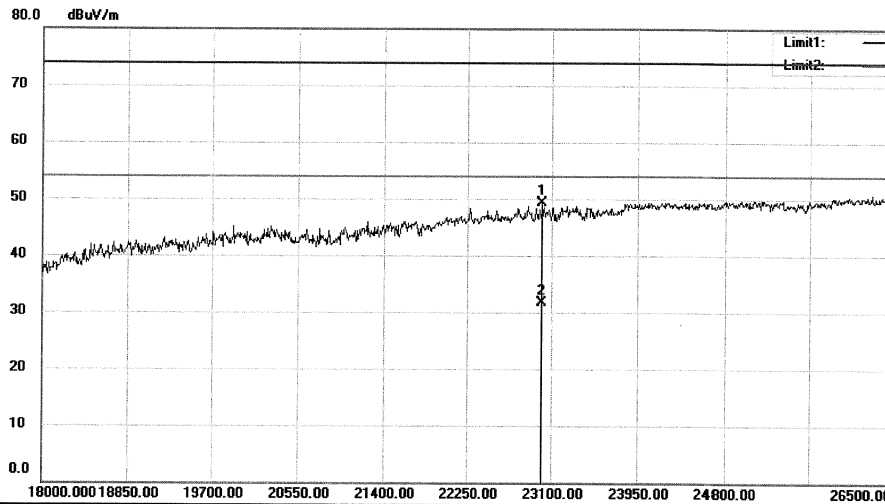
File :TUVData :#722

Page: 1

Shenzhen EMTEK Co., Ltd.
 Bldg. 69, Majialong Industry Zone, Nanshan District, Shenzhen, Guangdong, 518052 P. R. China
 www.emtek.com.cn Tel: +86-755-2695 4280 Fax: +86-755-2695 4282


Radiated Emission Measurement

File: TUV Data: #723 Date: 16/06/03/



Site: 3m Chamber #3 Polarization: **Horizontal** Temperature: 24 C
 Limit: (RE)FCC PART 15 C Power: AC 120V/60Hz Humidity: 53 %
 EUT: MID
 M/N: NS-P16AT08
 Mode: 8DPSK 2480
 Note:

| No. | Mk. | Freq. | Reading Level | Correct Factor | Measurement | Limit | Over | Antenna Height | Table Degree | |
|-----|-----|----------|---------------|----------------|-------------|--------|--------|----------------|--------------|---------|
| | | MHz | dBuV | dB | dBuV/m | dBuV/m | dB | cm | degree | Comment |
| 1 | | 23006.50 | 87.39 | -38.17 | 49.22 | 74.00 | -24.78 | peak | | |
| 2 | * | 23006.50 | 69.87 | -38.17 | 31.70 | 54.00 | -22.30 | AVG | | |

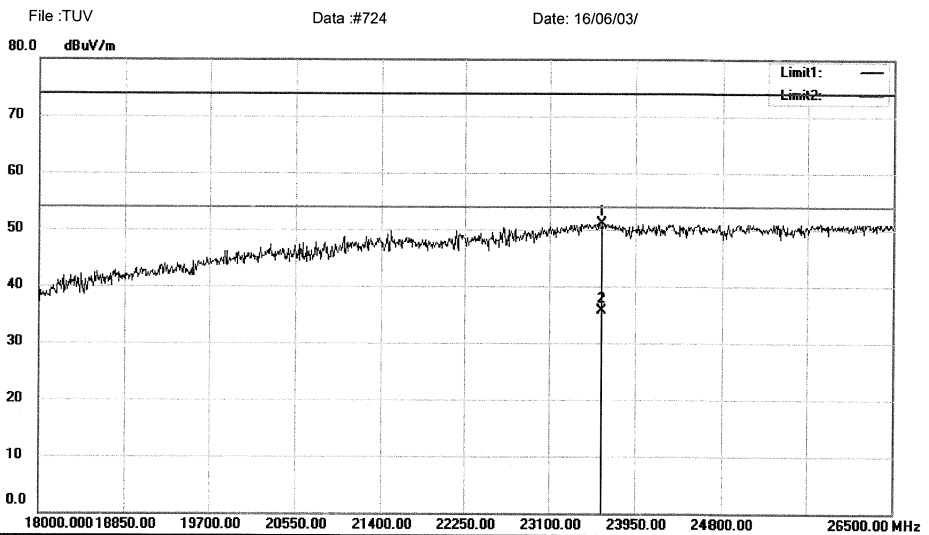
*:Maximum data x:Over limit !:over margin

Operator: KK

File: TUVData: #723

Page: 1

Shenzhen EMTEK Co., Ltd.
 Bldg. 69, Majialong Industry Zone, Nanshan District, Shenzhen, Guangdong, 518052 P. R. China
 www.emtek.com.cn Tel: +86-755-2695 4280 Fax: +86-755-2695 4282


Radiated Emission Measurement


Site 3m Chamber #3 Polarization: **Vertical** Temperature: 24 C
 Limit: (RE)FCC PART 15 C Power: AC 120V/60Hz Humidity: 53 %
 EUT: MID
 M/N: NS-P16AT08
 Mode:8DPSK 2480
 Note:

| No. | Mk. | Freq. | Reading Level | Correct Factor | Measurement | Limit | Over | Antenna Height | Table Degree | |
|-----|-----|----------|---------------|----------------|-------------|--------|--------|----------------|--------------|---------|
| | | MHz | dBuV | dB | dBuV/m | dBuV/m | dB | cm | degree | Comment |
| 1 | | 23618.50 | 88.71 | -37.53 | 51.18 | 74.00 | -22.82 | peak | | |
| 2 | * | 23618.50 | 73.33 | -37.53 | 35.80 | 54.00 | -18.20 | AVG | | |

*:Maximum data x:Over limit !:over margin

Operator: KK

File :TUV\Data :#724

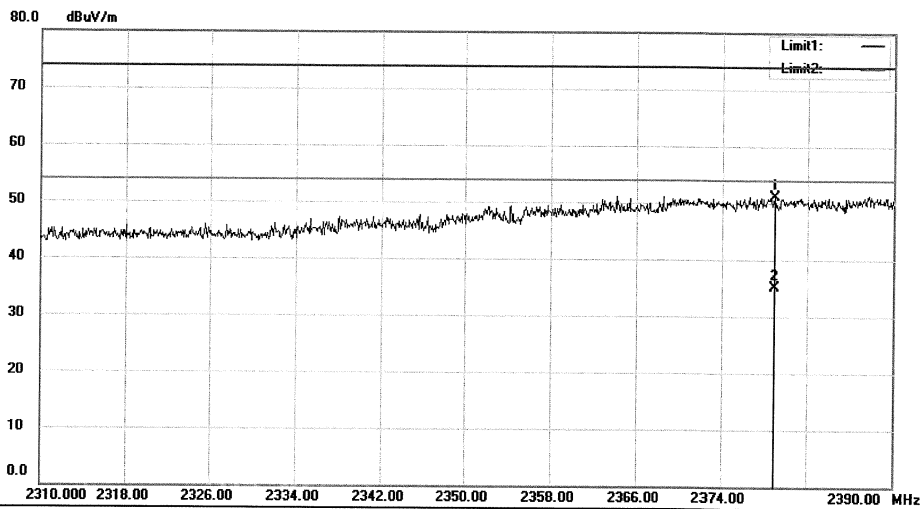
Page: 1

Test Plot of Band Edge of BDR & EDR

Shenzhen EMTEK Co., Ltd.
 Bldg. 69, Majialong Industry Zone, Nanshan District, Shenzhen, Guangdong, 518052 P. R. China
 www.emtek.com.cn Tel:+86-755-2695 4280 Fax:+86-755-2695 4282


Radiated Emission Measurement

File :TUV Data :#761 Date: 16/06/03/



Site 3m Chamber #3 Polarization: **Horizontal** Temperature: 24 C
 Limit: (RE)FCC PART 15 C Power: AC 120V/60Hz Humidity: 53 %
 EUT: MID
 M/N: NS-P16AT08
 Mode:GFSK 2402
 Note:

| No. | Mk. | Freq. | Reading Level | Correct Factor | Measurement | Limit | Over | Antenna Height | Table Degree | | |
|-----|-----|----------|---------------|----------------|-------------|--------|--------|----------------|--------------|--------|---------|
| | | MHz | dBuV | dB | dBuV/m | dBuV/m | dB | Detector | cm | degree | Comment |
| 1 | | 2378.960 | 43.65 | 7.53 | 51.18 | 74.00 | -22.82 | peak | | | |
| 2 | * | 2378.960 | 27.57 | 7.53 | 35.10 | 54.00 | -18.90 | AVG | | | |

*:Maximum data x:Over limit !:over margin

Operator: KK

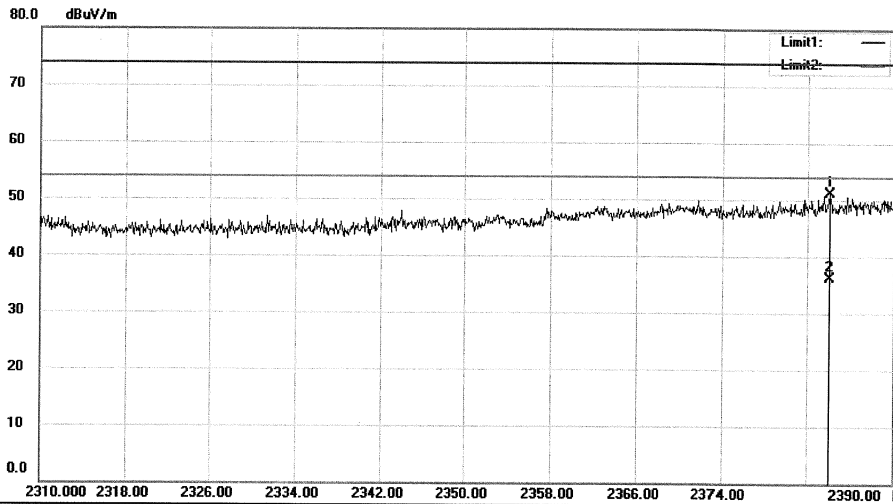
File :TUV\Data :#761

Page: 1

Shenzhen EMTEK Co., Ltd.
 Bldg. 69, Majialong Industry Zone, Nanshan District, Shenzhen, Guangdong, 518052 P. R. China
 www.emtek.com.cn Tel:+86-755-2695 4280 Fax:+86-755-2695 4282


Radiated Emission Measurement

File :TUV Data :#762 Date: 16/06/03/



Site 3m Chamber #3 Polarization: **Vertical** Temperature: 24 C
 Limit: (RE)FCC PART 15 C Power: AC 120V/60Hz Humidity: 53 %
 EUT: MID
 M/N: NS-P16AT08
 Mode:GFSK 2402
 Note:

| No. | Mk. | Freq. | Reading Level | Correct Factor | Measurement | Limit | Over | Antenna Height | Table Degree | Comment |
|-----|-----|----------|---------------|----------------|-------------|--------|--------|----------------|--------------|---------|
| | | MHz | dBuV | dB | dBuV/m | dBuV/m | dB | cm | degree | |
| 1 | | 2384.080 | 43.54 | 7.57 | 51.11 | 74.00 | -22.89 | peak | | |
| 2 | * | 2384.080 | 28.63 | 7.57 | 36.20 | 54.00 | -17.80 | AVG | | |

*:Maximum data x:Over limit !:over margin

Operator: KK

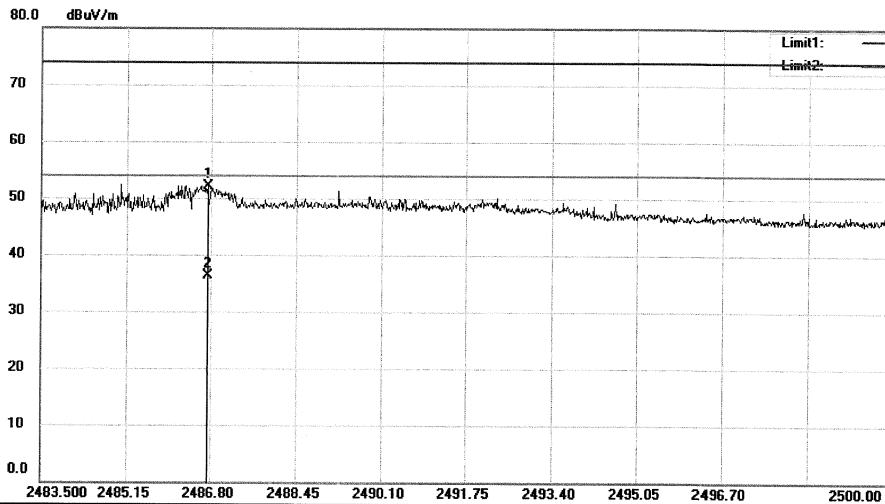
File :TUV\Data :#762

Page: 1

Shenzhen EMTEK Co., Ltd.
 Bldg. 69, Majialong Industry Zone, Nanshan District, Shenzhen, Guangdong, 518052 P. R. China
 www.emtek.com.cn Tel: +86-755-2695 4280 Fax: +86-755-2695 4282


Radiated Emission Measurement

File :TUV Data :#763 Date: 16/06/03/



Site 3m Chamber #3 Polarization: **Horizontal** Temperature: 24 C
 Limit: (RE)FCC PART 15 C Power: AC 120V/60Hz Humidity: 53 %
 EUT: MID
 M/N: NS-P16AT08
 Mode:GFSK 2480
 Note:

| No. | Mk. | Freq. MHz | Reading Level dBuV | Correct Factor dB | Measure- ment dBuV/m | Limit dBuV/m | Over dB | Detector | Antenna Height cm | Table Degree | Comment |
|-----|-----|--------------|--------------------------|-------------------------|----------------------------|-----------------|------------|----------|-------------------------|-----------------|---------|
| 1 | | 2486.734 | 43.86 | 8.31 | 52.17 | 74.00 | -21.83 | peak | | | |
| 2 | * | 2486.734 | 28.09 | 8.31 | 36.40 | 54.00 | -17.60 | AVG | | | |

*:Maximum data x:Over limit !:over margin

Operator: KK

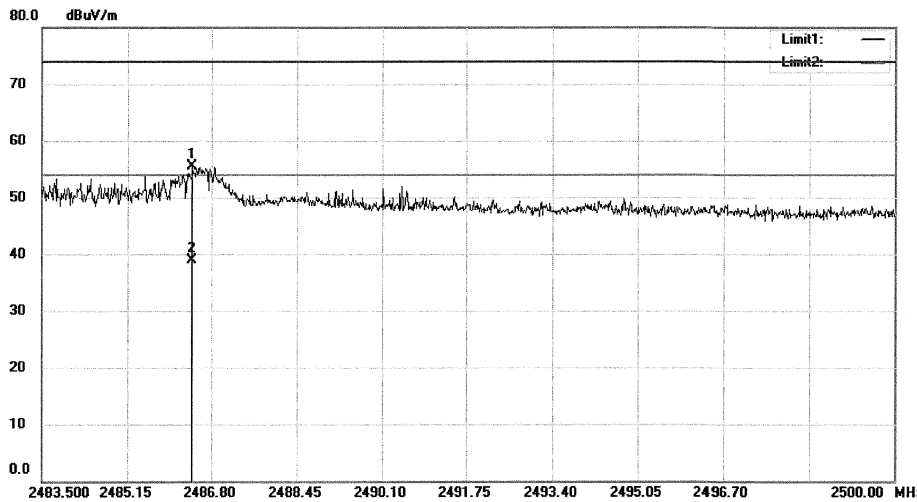
File :TUVData :#763

Page: 1

Shenzhen EMTEK Co., Ltd.
 Bldg. 69, Majialong Industry Zone, Nanshan District, Shenzhen, Guangdong, 518052 P.R. China
 www.emtek.com.cn Tel: +86-755-2695 4280 Fax: +86-755-2695 4282


Radiated Emission Measurement

File :TUV Data :#764 Date: 16/06/03/



Site 3m Chamber #3 Polarization: **Vertical** Temperature: 24 C
 Limit: (RE)FCC PART 15 C Power: AC 120V/60Hz Humidity: 53 %
 EUT: MID
 M/N: NS-P16AT08
 Mode:GFSK 2480
 Note:

| No. | Mk. | Freq. MHz | Reading Level dBuV | Correct Factor dB | Measure- ment dBuV/m | Limit dBuV/m | Over dB | Antenna Height cm | Table Degree degree | Comment |
|-----|-----|--------------|--------------------------|-------------------------|----------------------------|-----------------|------------|-------------------------|---------------------------|---------|
| 1 | | 2486.421 | 47.26 | 8.31 | 55.57 | 74.00 | -18.43 | peak | | |
| 2 | * | 2486.421 | 30.59 | 8.31 | 38.90 | 54.00 | -15.10 | AVG | | |

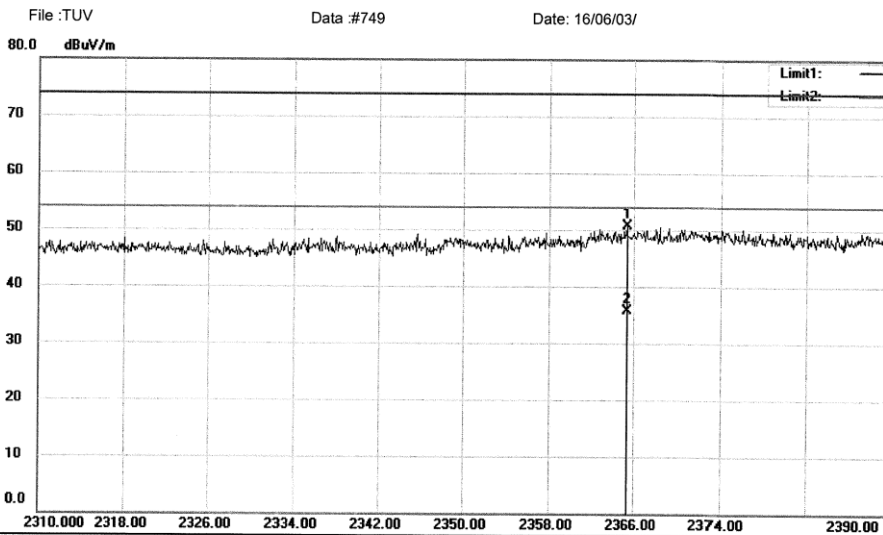
*:Maximum data x:Over limit !:over margin

Operator: KK

File :TUV\Data :#764

Page: 1

Shenzhen EMTEK Co., Ltd.
 Bldg. 69, Majialong Industry Zone, Nanshan District, Shenzhen, Guangdong, 518052 P. R. China
 www.emtek.com.cn Tel: +86-755-2695 4280 Fax: +86-755-2695 4282


Radiated Emission Measurement


Site 3m Chamber #3 Polarization: *Horizontal* Temperature: 24 C
 Limit: (RE)FCC PART 15 C Power: AC 120V/60Hz Humidity: 53 %
 EUT: MID
 M/N: NS-P16AT08
 Mode:DQPSK 2402
 Note:

| No. | Mk. | Freq. | Reading Level | Correct Factor | Measurement | Limit | Over | Antenna Height | Table Degree | |
|-----|-----|----------|---------------|----------------|-------------|--------|--------|----------------|--------------|---------|
| | | MHz | dBuV | dB | dBuV/m | dBuV/m | dB | cm | degree | Comment |
| 1 | | 2365.360 | 43.28 | 7.43 | 50.71 | 74.00 | -23.29 | peak | | |
| 2 | * | 2365.360 | 28.37 | 7.43 | 35.80 | 54.00 | -18.20 | AVG | | |

*:Maximum data x:Over limit !:over margin

Operator: KK

File :TUVData :#749

Page: 1