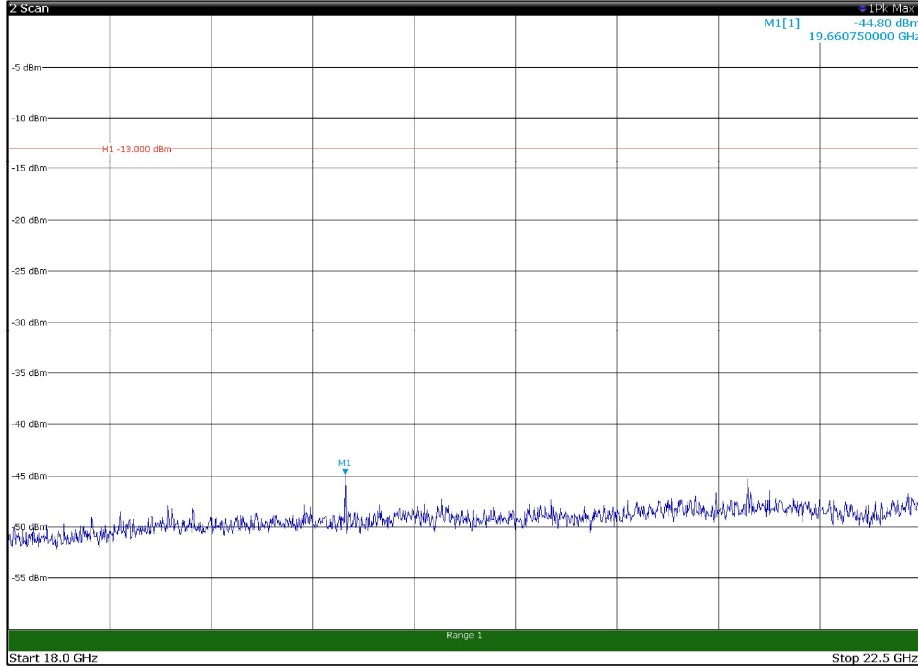


Channel: TOP, Modulation: 256QAM,  
BW=20MHz, Range: 18GHz - 22.5GHz, Polarization: Horizontal



Channel: TOP, Modulation: 256QAM,  
BW=20MHz, Range: 18GHz - 22.5GHz, Polarization: Vertical

### Clause 27.54 Frequency stability

The frequency stability shall be sufficient to ensure that the fundamental emission stays within the authorized bands of operation.

Test date: 10/21/2019 to 12/13/2019

Test results: Pass

### Special notes

Test are performed at 85% (40.8Vdc) and 115% (55.2Vdc) of the primary supply voltage and the same result was found.

### Test data

**RF PORT 1**

Temperature = -30°C				
Channel	Signal	Modulation	Frequency Error	
BOTTOM	LTE 5 MHz	QPSK	-1.138	mHz
BOTTOM	LTE 5 MHz	16QAM	-385	mHz
BOTTOM	LTE 5 MHz	64QAM	205	mHz
BOTTOM	LTE 5 MHz	256QAM	1.274	mHz
MIDDLE	LTE 5 MHz	QPSK	209	mHz
MIDDLE	LTE 5 MHz	16QAM	-648	mHz
MIDDLE	LTE 5 MHz	64QAM	415	mHz
MIDDLE	LTE 5 MHz	256QAM	-385	mHz
TOP	LTE 5 MHz	QPSK	663	mHz
TOP	LTE 5 MHz	16QAM	-1.207	Hz
TOP	LTE 5 MHz	64QAM	-1.364	Hz
TOP	LTE 5 MHz	256QAM	-66	mHz
BOTTOM	LTE 10 MHz	QPSK	-128	mHz
BOTTOM	LTE 10 MHz	16QAM	-528	mHz
BOTTOM	LTE 10 MHz	64QAM	-1.331	Hz
BOTTOM	LTE 10 MHz	256QAM	-1.327	mHz
MIDDLE	LTE 10 MHz	QPSK	-230	mHz
MIDDLE	LTE 10 MHz	16QAM	-475	mHz
MIDDLE	LTE 10 MHz	64QAM	-1.324	mHz
MIDDLE	LTE 10 MHz	256QAM	1.161	mHz
TOP	LTE 10 MHz	QPSK	578	mHz
TOP	LTE 10 MHz	16QAM	-77	mHz
TOP	LTE 10 MHz	64QAM	-731	mHz
TOP	LTE 10 MHz	256QAM	-85	mHz
BOTTOM	LTE 15 MHz	QPSK	439	mHz
BOTTOM	LTE 15 MHz	16QAM	-1.441	Hz
BOTTOM	LTE 15 MHz	64QAM	592	mHz
BOTTOM	LTE 15 MHz	256QAM	-552	mHz
MIDDLE	LTE 15 MHz	QPSK	-679	mHz
MIDDLE	LTE 15 MHz	16QAM	-204	mHz
MIDDLE	LTE 15 MHz	64QAM	1.408	mHz
MIDDLE	LTE 15 MHz	256QAM	592	mHz
TOP	LTE 15 MHz	QPSK	-1.002	mHz
TOP	LTE 15 MHz	16QAM	210	mHz
TOP	LTE 15 MHz	64QAM	-799	mHz
TOP	LTE 15 MHz	256QAM	675	mHz
BOTTOM	LTE 20 MHz	QPSK	-258	mHz
BOTTOM	LTE 20 MHz	16QAM	-1.235	mHz
BOTTOM	LTE 20 MHz	64QAM	989	mHz
BOTTOM	LTE 20 MHz	256QAM	-136	mHz
MIDDLE	LTE 20 MHz	QPSK	-912	mHz
MIDDLE	LTE 20 MHz	16QAM	623	mHz
MIDDLE	LTE 20 MHz	64QAM	-606	mHz
MIDDLE	LTE 20 MHz	256QAM	-676	mHz
TOP	LTE 20 MHz	QPSK	-461	mHz
TOP	LTE 20 MHz	16QAM	309	mHz
TOP	LTE 20 MHz	64QAM	-975	mHz
TOP	LTE 20 MHz	256QAM	736	mHz

Temperature = -20°C				
Channel	Signal	Modulation	Frequency Error	
BOTTOM	LTE 5 MHz	QPSK	1.423	Hz
BOTTOM	LTE 5 MHz	16QAM	1.475	Hz
BOTTOM	LTE 5 MHz	64QAM	1.247	Hz
BOTTOM	LTE 5 MHz	256QAM	-1.398	Hz
MIDDLE	LTE 5 MHz	QPSK	1.158	mHz
MIDDLE	LTE 5 MHz	16QAM	606	mHz
MIDDLE	LTE 5 MHz	64QAM	-976	mHz
MIDDLE	LTE 5 MHz	256QAM	579	mHz
TOP	LTE 5 MHz	QPSK	-73	mHz
TOP	LTE 5 MHz	16QAM	-254	mHz
TOP	LTE 5 MHz	64QAM	-157	mHz
TOP	LTE 5 MHz	256QAM	1.093	Hz
BOTTOM	LTE 10 MHz	QPSK	-578	mHz
BOTTOM	LTE 10 MHz	16QAM	1.291	mHz
BOTTOM	LTE 10 MHz	64QAM	-857	mHz
BOTTOM	LTE 10 MHz	256QAM	-725	mHz
MIDDLE	LTE 10 MHz	QPSK	-679	mHz
MIDDLE	LTE 10 MHz	16QAM	-828	mHz
MIDDLE	LTE 10 MHz	64QAM	1.228	mHz
MIDDLE	LTE 10 MHz	256QAM	-350	mHz
TOP	LTE 10 MHz	QPSK	46	mHz
TOP	LTE 10 MHz	16QAM	-596	mHz
TOP	LTE 10 MHz	64QAM	-1.349	Hz
TOP	LTE 10 MHz	256QAM	-47	mHz
BOTTOM	LTE 15 MHz	QPSK	427	mHz
BOTTOM	LTE 15 MHz	16QAM	-994	mHz
BOTTOM	LTE 15 MHz	64QAM	426	mHz
BOTTOM	LTE 15 MHz	256QAM	-13	mHz
MIDDLE	LTE 15 MHz	QPSK	253	mHz
MIDDLE	LTE 15 MHz	16QAM	-1.344	mHz
MIDDLE	LTE 15 MHz	64QAM	48	mHz
MIDDLE	LTE 15 MHz	256QAM	1.455	mHz
TOP	LTE 15 MHz	QPSK	-1.011	mHz
TOP	LTE 15 MHz	16QAM	-1.09	mHz
TOP	LTE 15 MHz	64QAM	-947	mHz
TOP	LTE 15 MHz	256QAM	-760	mHz
BOTTOM	LTE 20 MHz	QPSK	1.425	mHz
BOTTOM	LTE 20 MHz	16QAM	224	mHz
BOTTOM	LTE 20 MHz	64QAM	-1.419	mHz
BOTTOM	LTE 20 MHz	256QAM	269	mHz
MIDDLE	LTE 20 MHz	QPSK	1.43	mHz
MIDDLE	LTE 20 MHz	16QAM	-261	mHz
MIDDLE	LTE 20 MHz	64QAM	-14	mHz
MIDDLE	LTE 20 MHz	256QAM	-84	mHz
TOP	LTE 20 MHz	QPSK	1.115	mHz
TOP	LTE 20 MHz	16QAM	1.016	mHz
TOP	LTE 20 MHz	64QAM	686	mHz
TOP	LTE 20 MHz	256QAM	429	mHz

Temperature = -10°C				
Channel	Signal	Modulation	Frequency Error	
BOTTOM	LTE 5 MHz	QPSK	-690	mHz
BOTTOM	LTE 5 MHz	16QAM	-1.191	Hz
BOTTOM	LTE 5 MHz	64QAM	646	mHz
BOTTOM	LTE 5 MHz	256QAM	-1.159	mHz
MIDDLE	LTE 5 MHz	QPSK	721	mHz
MIDDLE	LTE 5 MHz	16QAM	1.448	Hz
MIDDLE	LTE 5 MHz	64QAM	1.355	Hz
MIDDLE	LTE 5 MHz	256QAM	1.11	Hz
TOP	LTE 5 MHz	QPSK	724	mHz
TOP	LTE 5 MHz	16QAM	-1.443	Hz
TOP	LTE 5 MHz	64QAM	-989	mHz
TOP	LTE 5 MHz	256QAM	-198	mHz
BOTTOM	LTE 10 MHz	QPSK	-1.211	Hz
BOTTOM	LTE 10 MHz	16QAM	635	mHz
BOTTOM	LTE 10 MHz	64QAM	733	mHz
BOTTOM	LTE 10 MHz	256QAM	-1.256	Hz
MIDDLE	LTE 10 MHz	QPSK	-1.336	Hz
MIDDLE	LTE 10 MHz	16QAM	37	mHz
MIDDLE	LTE 10 MHz	64QAM	1.167	Hz
MIDDLE	LTE 10 MHz	256QAM	-942	mHz
TOP	LTE 10 MHz	QPSK	-1.397	Hz
TOP	LTE 10 MHz	16QAM	-258	mHz
TOP	LTE 10 MHz	64QAM	-609	mHz
TOP	LTE 10 MHz	256QAM	-650	mHz
BOTTOM	LTE 15 MHz	QPSK	-419	mHz
BOTTOM	LTE 15 MHz	16QAM	373	mHz
BOTTOM	LTE 15 MHz	64QAM	-707	mHz
BOTTOM	LTE 15 MHz	256QAM	-593	mHz
MIDDLE	LTE 15 MHz	QPSK	983	mHz
MIDDLE	LTE 15 MHz	16QAM	288	mHz
MIDDLE	LTE 15 MHz	64QAM	392	mHz
MIDDLE	LTE 15 MHz	256QAM	993	mHz
TOP	LTE 15 MHz	QPSK	-56	mHz
TOP	LTE 15 MHz	16QAM	-1.475	Hz
TOP	LTE 15 MHz	64QAM	433	mHz
TOP	LTE 15 MHz	256QAM	156	mHz
BOTTOM	LTE 20 MHz	QPSK	362	mHz
BOTTOM	LTE 20 MHz	16QAM	1.05	mHz
BOTTOM	LTE 20 MHz	64QAM	-660	mHz
BOTTOM	LTE 20 MHz	256QAM	1.228	mHz
MIDDLE	LTE 20 MHz	QPSK	-557	mHz
MIDDLE	LTE 20 MHz	16QAM	-1.196	Hz
MIDDLE	LTE 20 MHz	64QAM	-532	mHz
MIDDLE	LTE 20 MHz	256QAM	231	mHz
TOP	LTE 20 MHz	QPSK	-1.034	Hz
TOP	LTE 20 MHz	16QAM	-193	mHz
TOP	LTE 20 MHz	64QAM	-555	mHz
TOP	LTE 20 MHz	256QAM	-858	mHz

Temperature = 0°C				
Channel	Signal	Modulation	Frequency Error	
BOTTOM	LTE 5 MHz	QPSK	-844	mHz
BOTTOM	LTE 5 MHz	16QAM	-733	mHz
BOTTOM	LTE 5 MHz	64QAM	257	mHz
BOTTOM	LTE 5 MHz	256QAM	873	mHz
MIDDLE	LTE 5 MHz	QPSK	252	mHz
MIDDLE	LTE 5 MHz	16QAM	-374	mHz
MIDDLE	LTE 5 MHz	64QAM	-1.158	Hz
MIDDLE	LTE 5 MHz	256QAM	-14	mHz
TOP	LTE 5 MHz	QPSK	691	mHz
TOP	LTE 5 MHz	16QAM	-930	mHz
TOP	LTE 5 MHz	64QAM	-1.14	Hz
TOP	LTE 5 MHz	256QAM	257	mHz
BOTTOM	LTE 10 MHz	QPSK	-707	mHz
BOTTOM	LTE 10 MHz	16QAM	1.394	Hz
BOTTOM	LTE 10 MHz	64QAM	-187	mHz
BOTTOM	LTE 10 MHz	256QAM	356	mHz
MIDDLE	LTE 10 MHz	QPSK	261	mHz
MIDDLE	LTE 10 MHz	16QAM	-1.215	Hz
MIDDLE	LTE 10 MHz	64QAM	281	mHz
MIDDLE	LTE 10 MHz	256QAM	-793	mHz
TOP	LTE 10 MHz	QPSK	-112	mHz
TOP	LTE 10 MHz	16QAM	-1.162	Hz
TOP	LTE 10 MHz	64QAM	1.488	Hz
TOP	LTE 10 MHz	256QAM	769	mHz
BOTTOM	LTE 15 MHz	QPSK	-8	mHz
BOTTOM	LTE 15 MHz	16QAM	-347	mHz
BOTTOM	LTE 15 MHz	64QAM	921	mHz
BOTTOM	LTE 15 MHz	256QAM	-193	mHz
MIDDLE	LTE 15 MHz	QPSK	980	mHz
MIDDLE	LTE 15 MHz	16QAM	463	mHz
MIDDLE	LTE 15 MHz	64QAM	-791	mHz
MIDDLE	LTE 15 MHz	256QAM	391	mHz
TOP	LTE 15 MHz	QPSK	1.208	Hz
TOP	LTE 15 MHz	16QAM	343	mHz
TOP	LTE 15 MHz	64QAM	962	mHz
TOP	LTE 15 MHz	256QAM	872	mHz
BOTTOM	LTE 20 MHz	QPSK	-395	mHz
BOTTOM	LTE 20 MHz	16QAM	-512	mHz
BOTTOM	LTE 20 MHz	64QAM	-567	mHz
BOTTOM	LTE 20 MHz	256QAM	361	mHz
MIDDLE	LTE 20 MHz	QPSK	149	mHz
MIDDLE	LTE 20 MHz	16QAM	-303	mHz
MIDDLE	LTE 20 MHz	64QAM	1.499	Hz
MIDDLE	LTE 20 MHz	256QAM	659	mHz
TOP	LTE 20 MHz	QPSK	-698	mHz
TOP	LTE 20 MHz	16QAM	-1.154	mHz
TOP	LTE 20 MHz	64QAM	-1.297	mHz
TOP	LTE 20 MHz	256QAM	617	mHz

Temperature = 10°C				
Channel	Signal	Modulation	Frequency Error	
BOTTOM	LTE 5 MHz	QPSK	-1.204	Hz
BOTTOM	LTE 5 MHz	16QAM	900	mHz
BOTTOM	LTE 5 MHz	64QAM	-452	mHz
BOTTOM	LTE 5 MHz	256QAM	108	mHz
MIDDLE	LTE 5 MHz	QPSK	-337	mHz
MIDDLE	LTE 5 MHz	16QAM	-254	mHz
MIDDLE	LTE 5 MHz	64QAM	1.498	Hz
MIDDLE	LTE 5 MHz	256QAM	-1.116	Hz
TOP	LTE 5 MHz	QPSK	692	mHz
TOP	LTE 5 MHz	16QAM	361	mHz
TOP	LTE 5 MHz	64QAM	-1.096	Hz
TOP	LTE 5 MHz	256QAM	1.468	Hz
BOTTOM	LTE 10 MHz	QPSK	956	mHz
BOTTOM	LTE 10 MHz	16QAM	-788	mHz
BOTTOM	LTE 10 MHz	64QAM	514	mHz
BOTTOM	LTE 10 MHz	256QAM	671	mHz
MIDDLE	LTE 10 MHz	QPSK	1.075	Hz
MIDDLE	LTE 10 MHz	16QAM	-946	mHz
MIDDLE	LTE 10 MHz	64QAM	339	mHz
MIDDLE	LTE 10 MHz	256QAM	-1.325	Hz
TOP	LTE 10 MHz	QPSK	1.404	Hz
TOP	LTE 10 MHz	16QAM	-1.177	Hz
TOP	LTE 10 MHz	64QAM	-601	mHz
TOP	LTE 10 MHz	256QAM	1.402	Hz
BOTTOM	LTE 15 MHz	QPSK	-1.154	Hz
BOTTOM	LTE 15 MHz	16QAM	324	mHz
BOTTOM	LTE 15 MHz	64QAM	-22	mHz
BOTTOM	LTE 15 MHz	256QAM	1.159	Hz
MIDDLE	LTE 15 MHz	QPSK	1.308	Hz
MIDDLE	LTE 15 MHz	16QAM	-1	mHz
MIDDLE	LTE 15 MHz	64QAM	-546	mHz
MIDDLE	LTE 15 MHz	256QAM	-737	mHz
TOP	LTE 15 MHz	QPSK	82	mHz
TOP	LTE 15 MHz	16QAM	-376	mHz
TOP	LTE 15 MHz	64QAM	-1.241	Hz
TOP	LTE 15 MHz	256QAM	1.407	Hz
BOTTOM	LTE 20 MHz	QPSK	-741	mHz
BOTTOM	LTE 20 MHz	16QAM	-316	mHz
BOTTOM	LTE 20 MHz	64QAM	587	mHz
BOTTOM	LTE 20 MHz	256QAM	-230	mHz
MIDDLE	LTE 20 MHz	QPSK	-1.232	Hz
MIDDLE	LTE 20 MHz	16QAM	19	mHz
MIDDLE	LTE 20 MHz	64QAM	-639	mHz
MIDDLE	LTE 20 MHz	256QAM	-297	mHz
TOP	LTE 20 MHz	QPSK	-1.133	Hz
TOP	LTE 20 MHz	16QAM	263	mHz
TOP	LTE 20 MHz	64QAM	1.38	Hz
TOP	LTE 20 MHz	256QAM	-186	mHz

Temperature = 20°C				
Channel	Channel	Channel	Channel	Channel
BOTTOM	LTE 5 MHz	QPSK	-32.904	mHz
BOTTOM	LTE 5 MHz	16QAM	-806.83	mHz
BOTTOM	LTE 5 MHz	64QAM	-1.956	Hz
BOTTOM	LTE 5 MHz	256QAM	-706.13	mHz
MIDDLE	LTE 5 MHz	QPSK	697.71	mHz
MIDDLE	LTE 5 MHz	16QAM	-305.31	mHz
MIDDLE	LTE 5 MHz	64QAM	698.33	mHz
MIDDLE	LTE 5 MHz	256QAM	-753.11	mHz
TOP	LTE 5 MHz	QPSK	468.8	mHz
TOP	LTE 5 MHz	16QAM	-439.8	mHz
TOP	LTE 5 MHz	64QAM	-102.06	mHz
TOP	LTE 5 MHz	256QAM	-772.48	mHz
BOTTOM	LTE 10 MHz	QPSK	571.88	mHz
BOTTOM	LTE 10 MHz	16QAM	460.84	mHz
BOTTOM	LTE 10 MHz	64QAM	1.0889	Hz
BOTTOM	LTE 10 MHz	256QAM	-560.1	mHz
MIDDLE	LTE 10 MHz	QPSK	660.18	mHz
MIDDLE	LTE 10 MHz	16QAM	-644.79	mHz
MIDDLE	LTE 10 MHz	64QAM	-127.31	mHz
MIDDLE	LTE 10 MHz	256QAM	127.16	mHz
TOP	LTE 10 MHz	QPSK	127.69	mHz
TOP	LTE 10 MHz	16QAM	-407.5	mHz
TOP	LTE 10 MHz	64QAM	92.951	mHz
TOP	LTE 10 MHz	256QAM	-261.71	mHz
BOTTOM	LTE 15 MHz	QPSK	282.12	mHz
BOTTOM	LTE 15 MHz	16QAM	-481.14	mHz
BOTTOM	LTE 15 MHz	64QAM	-585.44	mHz
BOTTOM	LTE 15 MHz	256QAM	-1.2794	Hz
MIDDLE	LTE 15 MHz	QPSK	-885.16	mHz
MIDDLE	LTE 15 MHz	16QAM	-884.86	mHz
MIDDLE	LTE 15 MHz	64QAM	669.43	mHz
MIDDLE	LTE 15 MHz	256QAM	-1.0072	Hz
TOP	LTE 15 MHz	QPSK	352.29	mHz
TOP	LTE 15 MHz	16QAM	246.07	mHz
TOP	LTE 15 MHz	64QAM	155.54	mHz
TOP	LTE 15 MHz	256QAM	-323.13	mHz
BOTTOM	LTE 20 MHz	QPSK	81.056	mHz
BOTTOM	LTE 20 MHz	16QAM	412.68	mHz
BOTTOM	LTE 20 MHz	64QAM	-87.235	mHz
BOTTOM	LTE 20 MHz	256QAM	792.1	mHz
MIDDLE	LTE 20 MHz	QPSK	306.94	mHz
MIDDLE	LTE 20 MHz	16QAM	-778.43	mHz
MIDDLE	LTE 20 MHz	64QAM	517.59	mHz
MIDDLE	LTE 20 MHz	256QAM	1.0016	Hz
TOP	LTE 20 MHz	QPSK	-588.16	mHz
TOP	LTE 20 MHz	16QAM	-19.807	mHz
TOP	LTE 20 MHz	64QAM	-467.31	mHz
TOP	LTE 20 MHz	256QAM	-205.49	mHz



Temperature = 30°C				
Channel	Signal	Modulation	Frequency Error	
BOTTOM	LTE 5 MHz	QPSK	1.281	Hz
BOTTOM	LTE 5 MHz	16QAM	-301	mHz
BOTTOM	LTE 5 MHz	64QAM	554	mHz
BOTTOM	LTE 5 MHz	256QAM	1.493	Hz
MIDDLE	LTE 5 MHz	QPSK	272	mHz
MIDDLE	LTE 5 MHz	16QAM	134	mHz
MIDDLE	LTE 5 MHz	64QAM	370	mHz
MIDDLE	LTE 5 MHz	256QAM	29	mHz
TOP	LTE 5 MHz	QPSK	-550	mHz
TOP	LTE 5 MHz	16QAM	1.172	Hz
TOP	LTE 5 MHz	64QAM	1.415	Hz
TOP	LTE 5 MHz	256QAM	-918	mHz
BOTTOM	LTE 10 MHz	QPSK	-945	mHz
BOTTOM	LTE 10 MHz	16QAM	-405	mHz
BOTTOM	LTE 10 MHz	64QAM	842	mHz
BOTTOM	LTE 10 MHz	256QAM	-74	mHz
MIDDLE	LTE 10 MHz	QPSK	-1.073	Hz
MIDDLE	LTE 10 MHz	16QAM	-837	mHz
MIDDLE	LTE 10 MHz	64QAM	-721	mHz
MIDDLE	LTE 10 MHz	256QAM	1.401	Hz
TOP	LTE 10 MHz	QPSK	399	mHz
TOP	LTE 10 MHz	16QAM	-1.128	Hz
TOP	LTE 10 MHz	64QAM	-1.324	Hz
TOP	LTE 10 MHz	256QAM	659	mHz
BOTTOM	LTE 15 MHz	QPSK	-586	mHz
BOTTOM	LTE 15 MHz	16QAM	399	mHz
BOTTOM	LTE 15 MHz	64QAM	-1.078	Hz
BOTTOM	LTE 15 MHz	256QAM	685	mHz
MIDDLE	LTE 15 MHz	QPSK	-675	mHz
MIDDLE	LTE 15 MHz	16QAM	1.263	mHz
MIDDLE	LTE 15 MHz	64QAM	1.03	mHz
MIDDLE	LTE 15 MHz	256QAM	1.015	Hz
TOP	LTE 15 MHz	QPSK	-1.484	Hz
TOP	LTE 15 MHz	16QAM	1.378	Hz
TOP	LTE 15 MHz	64QAM	115	mHz
TOP	LTE 15 MHz	256QAM	-1.187	Hz
BOTTOM	LTE 20 MHz	QPSK	-549	mHz
BOTTOM	LTE 20 MHz	16QAM	-438	mHz
BOTTOM	LTE 20 MHz	64QAM	-342	mHz
BOTTOM	LTE 20 MHz	256QAM	39	mHz
MIDDLE	LTE 20 MHz	QPSK	648	mHz
MIDDLE	LTE 20 MHz	16QAM	-661	mHz
MIDDLE	LTE 20 MHz	64QAM	-410	mHz
MIDDLE	LTE 20 MHz	256QAM	-171	mHz
TOP	LTE 20 MHz	QPSK	773	mHz
TOP	LTE 20 MHz	16QAM	-1.027	mHz
TOP	LTE 20 MHz	64QAM	1.465	mHz
TOP	LTE 20 MHz	256QAM	-27	mHz

Temperature = 40°C				
Channel	Signal	Modulation	Frequency Error	
BOTTOM	LTE 5 MHz	QPSK	-830	mHz
BOTTOM	LTE 5 MHz	16QAM	1.231	Hz
BOTTOM	LTE 5 MHz	64QAM	-881	mHz
BOTTOM	LTE 5 MHz	256QAM	71	mHz
MIDDLE	LTE 5 MHz	QPSK	-770	mHz
MIDDLE	LTE 5 MHz	16QAM	-126	mHz
MIDDLE	LTE 5 MHz	64QAM	517	mHz
MIDDLE	LTE 5 MHz	256QAM	-1.29	Hz
TOP	LTE 5 MHz	QPSK	-449	mHz
TOP	LTE 5 MHz	16QAM	584	mHz
TOP	LTE 5 MHz	64QAM	-898	mHz
TOP	LTE 5 MHz	256QAM	-137	mHz
BOTTOM	LTE 10 MHz	QPSK	846	mHz
BOTTOM	LTE 10 MHz	16QAM	893	mHz
BOTTOM	LTE 10 MHz	64QAM	1.281	Hz
BOTTOM	LTE 10 MHz	256QAM	-108	mHz
MIDDLE	LTE 10 MHz	QPSK	-744	mHz
MIDDLE	LTE 10 MHz	16QAM	1.04	Hz
MIDDLE	LTE 10 MHz	64QAM	1.46	Hz
MIDDLE	LTE 10 MHz	256QAM	-1.458	Hz
TOP	LTE 10 MHz	QPSK	-769	mHz
TOP	LTE 10 MHz	16QAM	-387	mHz
TOP	LTE 10 MHz	64QAM	1.247	Hz
TOP	LTE 10 MHz	256QAM	734	mHz
BOTTOM	LTE 15 MHz	QPSK	-601	mHz
BOTTOM	LTE 15 MHz	16QAM	1.261	Hz
BOTTOM	LTE 15 MHz	64QAM	-942	mHz
BOTTOM	LTE 15 MHz	256QAM	-864	mHz
MIDDLE	LTE 15 MHz	QPSK	-799	mHz
MIDDLE	LTE 15 MHz	16QAM	-1.276	Hz
MIDDLE	LTE 15 MHz	64QAM	-716	mHz
MIDDLE	LTE 15 MHz	256QAM	330	mHz
TOP	LTE 15 MHz	QPSK	-436	mHz
TOP	LTE 15 MHz	16QAM	27	mHz
TOP	LTE 15 MHz	64QAM	1.346	Hz
TOP	LTE 15 MHz	256QAM	-974	mHz
BOTTOM	LTE 20 MHz	QPSK	-153	mHz
BOTTOM	LTE 20 MHz	16QAM	837	mHz
BOTTOM	LTE 20 MHz	64QAM	254	mHz
BOTTOM	LTE 20 MHz	256QAM	-926	mHz
MIDDLE	LTE 20 MHz	QPSK	1.5	mHz
MIDDLE	LTE 20 MHz	16QAM	-358	mHz
MIDDLE	LTE 20 MHz	64QAM	-128	mHz
MIDDLE	LTE 20 MHz	256QAM	1.4	Hz
TOP	LTE 20 MHz	QPSK	342	mHz
TOP	LTE 20 MHz	16QAM	852	mHz
TOP	LTE 20 MHz	64QAM	-548	mHz
TOP	LTE 20 MHz	256QAM	865	mHz

Temperature = 50°C				
Channel	Signal	Modulation	Frequency Error	
BOTTOM	LTE 5 MHz	QPSK	603	mHz
BOTTOM	LTE 5 MHz	16QAM	-1.081	Hz
BOTTOM	LTE 5 MHz	64QAM	1.05	Hz
BOTTOM	LTE 5 MHz	256QAM	-1.178	Hz
MIDDLE	LTE 5 MHz	QPSK	750	mHz
MIDDLE	LTE 5 MHz	16QAM	15	mHz
MIDDLE	LTE 5 MHz	64QAM	1.488	Hz
MIDDLE	LTE 5 MHz	256QAM	838	mHz
TOP	LTE 5 MHz	QPSK	-930	mHz
TOP	LTE 5 MHz	16QAM	941	mHz
TOP	LTE 5 MHz	64QAM	331	mHz
TOP	LTE 5 MHz	256QAM	1.066	Hz
BOTTOM	LTE 10 MHz	QPSK	887	mHz
BOTTOM	LTE 10 MHz	16QAM	-278	mHz
BOTTOM	LTE 10 MHz	64QAM	332	mHz
BOTTOM	LTE 10 MHz	256QAM	1.085	Hz
MIDDLE	LTE 10 MHz	QPSK	1.13	Hz
MIDDLE	LTE 10 MHz	16QAM	1.15	Hz
MIDDLE	LTE 10 MHz	64QAM	1.215	Hz
MIDDLE	LTE 10 MHz	256QAM	-192	mHz
TOP	LTE 10 MHz	QPSK	-1.061	Hz
TOP	LTE 10 MHz	16QAM	496	mHz
TOP	LTE 10 MHz	64QAM	-913	mHz
TOP	LTE 10 MHz	256QAM	-1.424	mHz
BOTTOM	LTE 15 MHz	QPSK	440	mHz
BOTTOM	LTE 15 MHz	16QAM	146	mHz
BOTTOM	LTE 15 MHz	64QAM	-829	mHz
BOTTOM	LTE 15 MHz	256QAM	-791	mHz
MIDDLE	LTE 15 MHz	QPSK	85	mHz
MIDDLE	LTE 15 MHz	16QAM	925	mHz
MIDDLE	LTE 15 MHz	64QAM	-15	mHz
MIDDLE	LTE 15 MHz	256QAM	464	mHz
TOP	LTE 15 MHz	QPSK	1.262	mHz
TOP	LTE 15 MHz	16QAM	1.311	mHz
TOP	LTE 15 MHz	64QAM	-12	mHz
TOP	LTE 15 MHz	256QAM	733	mHz
BOTTOM	LTE 20 MHz	QPSK	307	mHz
BOTTOM	LTE 20 MHz	16QAM	-682	mHz
BOTTOM	LTE 20 MHz	64QAM	935	mHz
BOTTOM	LTE 20 MHz	256QAM	519	mHz
MIDDLE	LTE 20 MHz	QPSK	-1.471	mHz
MIDDLE	LTE 20 MHz	16QAM	-1.281	mHz
MIDDLE	LTE 20 MHz	64QAM	1.491	mHz
MIDDLE	LTE 20 MHz	256QAM	835	mHz
TOP	LTE 20 MHz	QPSK	-1.364	mHz
TOP	LTE 20 MHz	16QAM	637	mHz
TOP	LTE 20 MHz	64QAM	-825	mHz
TOP	LTE 20 MHz	256QAM	1.049	mHz

**RF PORT 2**

Temperature = -30°C				
Channel	Signal	Modulation	Frequency Error	
BOTTOM	LTE 5 MHz	QPSK	859	mHz
BOTTOM	LTE 5 MHz	16QAM	115	mHz
BOTTOM	LTE 5 MHz	64QAM	905	mHz
BOTTOM	LTE 5 MHz	256QAM	-288	mHz
MIDDLE	LTE 5 MHz	QPSK	281	mHz
MIDDLE	LTE 5 MHz	16QAM	740	mHz
MIDDLE	LTE 5 MHz	64QAM	328	mHz
MIDDLE	LTE 5 MHz	256QAM	1.474	Hz
TOP	LTE 5 MHz	QPSK	-346	mHz
TOP	LTE 5 MHz	16QAM	-524	mHz
TOP	LTE 5 MHz	64QAM	1.247	Hz
TOP	LTE 5 MHz	256QAM	-1.34	Hz
BOTTOM	LTE 10 MHz	QPSK	-757	mHz
BOTTOM	LTE 10 MHz	16QAM	1.494	Hz
BOTTOM	LTE 10 MHz	64QAM	-1.089	Hz
BOTTOM	LTE 10 MHz	256QAM	-702	mHz
MIDDLE	LTE 10 MHz	QPSK	-739	mHz
MIDDLE	LTE 10 MHz	16QAM	-974	mHz
MIDDLE	LTE 10 MHz	64QAM	-1.162	Hz
MIDDLE	LTE 10 MHz	256QAM	-178	mHz
TOP	LTE 10 MHz	QPSK	-1.448	Hz
TOP	LTE 10 MHz	16QAM	972	mHz
TOP	LTE 10 MHz	64QAM	-1.327	Hz
TOP	LTE 10 MHz	256QAM	556	mHz
BOTTOM	LTE 15 MHz	QPSK	-110	mHz
BOTTOM	LTE 15 MHz	16QAM	219	mHz
BOTTOM	LTE 15 MHz	64QAM	-1.099	Hz
BOTTOM	LTE 15 MHz	256QAM	-1.176	Hz
MIDDLE	LTE 15 MHz	QPSK	120	mHz
MIDDLE	LTE 15 MHz	16QAM	1.377	Hz
MIDDLE	LTE 15 MHz	64QAM	-1.352	Hz
MIDDLE	LTE 15 MHz	256QAM	-829	mHz
TOP	LTE 15 MHz	QPSK	-925	mHz
TOP	LTE 15 MHz	16QAM	162	mHz
TOP	LTE 15 MHz	64QAM	229	mHz
TOP	LTE 15 MHz	256QAM	-590	mHz
BOTTOM	LTE 20 MHz	QPSK	-107	mHz
BOTTOM	LTE 20 MHz	16QAM	808	mHz
BOTTOM	LTE 20 MHz	64QAM	-474	mHz
BOTTOM	LTE 20 MHz	256QAM	1.062	Hz
MIDDLE	LTE 20 MHz	QPSK	268	mHz
MIDDLE	LTE 20 MHz	16QAM	757	mHz
MIDDLE	LTE 20 MHz	64QAM	-390	mHz
MIDDLE	LTE 20 MHz	256QAM	638	mHz
TOP	LTE 20 MHz	QPSK	725	mHz
TOP	LTE 20 MHz	16QAM	433	mHz
TOP	LTE 20 MHz	64QAM	-534	mHz
TOP	LTE 20 MHz	256QAM	86	mHz

Temperature = -20°C				
Channel	Signal	Modulation	Frequency Error	
BOTTOM	LTE 5 MHz	QPSK	544	mHz
BOTTOM	LTE 5 MHz	16QAM	1.494	Hz
BOTTOM	LTE 5 MHz	64QAM	975	mHz
BOTTOM	LTE 5 MHz	256QAM	-1.468	Hz
MIDDLE	LTE 5 MHz	QPSK	490	mHz
MIDDLE	LTE 5 MHz	16QAM	-828	mHz
MIDDLE	LTE 5 MHz	64QAM	1.431	Hz
MIDDLE	LTE 5 MHz	256QAM	756	mHz
TOP	LTE 5 MHz	QPSK	1.221	Hz
TOP	LTE 5 MHz	16QAM	1.166	Hz
TOP	LTE 5 MHz	64QAM	-1.488	Hz
TOP	LTE 5 MHz	256QAM	1.217	Hz
BOTTOM	LTE 10 MHz	QPSK	-295	mHz
BOTTOM	LTE 10 MHz	16QAM	-1.36	Hz
BOTTOM	LTE 10 MHz	64QAM	-194	mHz
BOTTOM	LTE 10 MHz	256QAM	1.097	Hz
MIDDLE	LTE 10 MHz	QPSK	701	mHz
MIDDLE	LTE 10 MHz	16QAM	-1.211	Hz
MIDDLE	LTE 10 MHz	64QAM	1.158	Hz
MIDDLE	LTE 10 MHz	256QAM	398	mHz
TOP	LTE 10 MHz	QPSK	-1.402	Hz
TOP	LTE 10 MHz	16QAM	-1.283	Hz
TOP	LTE 10 MHz	64QAM	875	mHz
TOP	LTE 10 MHz	256QAM	572	mHz
BOTTOM	LTE 15 MHz	QPSK	-1.443	Hz
BOTTOM	LTE 15 MHz	16QAM	-394	mHz
BOTTOM	LTE 15 MHz	64QAM	-1.366	Hz
BOTTOM	LTE 15 MHz	256QAM	-1.28	Hz
MIDDLE	LTE 15 MHz	QPSK	831	mHz
MIDDLE	LTE 15 MHz	16QAM	234	mHz
MIDDLE	LTE 15 MHz	64QAM	-133	mHz
MIDDLE	LTE 15 MHz	256QAM	-1.046	Hz
TOP	LTE 15 MHz	QPSK	-1.225	Hz
TOP	LTE 15 MHz	16QAM	-1.138	Hz
TOP	LTE 15 MHz	64QAM	-368	mHz
TOP	LTE 15 MHz	256QAM	-1.2	Hz
BOTTOM	LTE 20 MHz	QPSK	-9	mHz
BOTTOM	LTE 20 MHz	16QAM	-92	mHz
BOTTOM	LTE 20 MHz	64QAM	-376	mHz
BOTTOM	LTE 20 MHz	256QAM	1.329	Hz
MIDDLE	LTE 20 MHz	QPSK	-225	mHz
MIDDLE	LTE 20 MHz	16QAM	728	mHz
MIDDLE	LTE 20 MHz	64QAM	1.138	Hz
MIDDLE	LTE 20 MHz	256QAM	867	mHz
TOP	LTE 20 MHz	QPSK	-398	mHz
TOP	LTE 20 MHz	16QAM	44	mHz
TOP	LTE 20 MHz	64QAM	-432	mHz
TOP	LTE 20 MHz	256QAM	656	mHz

Temperature = -10°C				
Channel	Signal	Modulation	Frequency Error	
BOTTOM	LTE 5 MHz	QPSK	597	mHz
BOTTOM	LTE 5 MHz	16QAM	1.406	Hz
BOTTOM	LTE 5 MHz	64QAM	1.194	Hz
BOTTOM	LTE 5 MHz	256QAM	1.443	Hz
MIDDLE	LTE 5 MHz	QPSK	652	mHz
MIDDLE	LTE 5 MHz	16QAM	-618	mHz
MIDDLE	LTE 5 MHz	64QAM	431	mHz
MIDDLE	LTE 5 MHz	256QAM	-584	mHz
TOP	LTE 5 MHz	QPSK	333	mHz
TOP	LTE 5 MHz	16QAM	504	mHz
TOP	LTE 5 MHz	64QAM	-454	mHz
TOP	LTE 5 MHz	256QAM	3	mHz
BOTTOM	LTE 10 MHz	QPSK	517	mHz
BOTTOM	LTE 10 MHz	16QAM	-682	mHz
BOTTOM	LTE 10 MHz	64QAM	-951	mHz
BOTTOM	LTE 10 MHz	256QAM	722	mHz
MIDDLE	LTE 10 MHz	QPSK	-1.342	Hz
MIDDLE	LTE 10 MHz	16QAM	-1.045	Hz
MIDDLE	LTE 10 MHz	64QAM	298	mHz
MIDDLE	LTE 10 MHz	256QAM	67	mHz
TOP	LTE 10 MHz	QPSK	1.111	Hz
TOP	LTE 10 MHz	16QAM	-96	mHz
TOP	LTE 10 MHz	64QAM	1.063	Hz
TOP	LTE 10 MHz	256QAM	875	mHz
BOTTOM	LTE 15 MHz	QPSK	1.027	Hz
BOTTOM	LTE 15 MHz	16QAM	-373	mHz
BOTTOM	LTE 15 MHz	64QAM	-1.403	Hz
BOTTOM	LTE 15 MHz	256QAM	1.397	Hz
MIDDLE	LTE 15 MHz	QPSK	1.052	Hz
MIDDLE	LTE 15 MHz	16QAM	-457	mHz
MIDDLE	LTE 15 MHz	64QAM	797	mHz
MIDDLE	LTE 15 MHz	256QAM	-877	mHz
TOP	LTE 15 MHz	QPSK	-1.034	Hz
TOP	LTE 15 MHz	16QAM	959	mHz
TOP	LTE 15 MHz	64QAM	1.038	Hz
TOP	LTE 15 MHz	256QAM	-1.235	Hz
BOTTOM	LTE 20 MHz	QPSK	-1.305	Hz
BOTTOM	LTE 20 MHz	16QAM	487	mHz
BOTTOM	LTE 20 MHz	64QAM	1.469	Hz
BOTTOM	LTE 20 MHz	256QAM	903	mHz
MIDDLE	LTE 20 MHz	QPSK	-1.31	Hz
MIDDLE	LTE 20 MHz	16QAM	127	mHz
MIDDLE	LTE 20 MHz	64QAM	-652	mHz
MIDDLE	LTE 20 MHz	256QAM	641	mHz
TOP	LTE 20 MHz	QPSK	287	mHz
TOP	LTE 20 MHz	16QAM	-571	mHz
TOP	LTE 20 MHz	64QAM	74	mHz
TOP	LTE 20 MHz	256QAM	615	mHz

Temperature = 0°C				
Channel	Signal	Modulation	Frequency Error	
BOTTOM	LTE 5 MHz	QPSK	1.441	Hz
BOTTOM	LTE 5 MHz	16QAM	-290	mHz
BOTTOM	LTE 5 MHz	64QAM	-105	mHz
BOTTOM	LTE 5 MHz	256QAM	226	mHz
MIDDLE	LTE 5 MHz	QPSK	196	mHz
MIDDLE	LTE 5 MHz	16QAM	184	mHz
MIDDLE	LTE 5 MHz	64QAM	1.214	Hz
MIDDLE	LTE 5 MHz	256QAM	-1.363	Hz
TOP	LTE 5 MHz	QPSK	-1.44	Hz
TOP	LTE 5 MHz	16QAM	72	mHz
TOP	LTE 5 MHz	64QAM	239	mHz
TOP	LTE 5 MHz	256QAM	-72	mHz
BOTTOM	LTE 10 MHz	QPSK	-582	mHz
BOTTOM	LTE 10 MHz	16QAM	281	mHz
BOTTOM	LTE 10 MHz	64QAM	1.283	Hz
BOTTOM	LTE 10 MHz	256QAM	1.396	Hz
MIDDLE	LTE 10 MHz	QPSK	-519	mHz
MIDDLE	LTE 10 MHz	16QAM	-39	mHz
MIDDLE	LTE 10 MHz	64QAM	-1.153	Hz
MIDDLE	LTE 10 MHz	256QAM	541	mHz
TOP	LTE 10 MHz	QPSK	-443	mHz
TOP	LTE 10 MHz	16QAM	-567	mHz
TOP	LTE 10 MHz	64QAM	-151	mHz
TOP	LTE 10 MHz	256QAM	-735	mHz
BOTTOM	LTE 15 MHz	QPSK	1.17	Hz
BOTTOM	LTE 15 MHz	16QAM	-287	mHz
BOTTOM	LTE 15 MHz	64QAM	-1.368	Hz
BOTTOM	LTE 15 MHz	256QAM	443	mHz
MIDDLE	LTE 15 MHz	QPSK	-1.054	Hz
MIDDLE	LTE 15 MHz	16QAM	-413	mHz
MIDDLE	LTE 15 MHz	64QAM	-1.333	Hz
MIDDLE	LTE 15 MHz	256QAM	759	mHz
TOP	LTE 15 MHz	QPSK	-520	mHz
TOP	LTE 15 MHz	16QAM	488	mHz
TOP	LTE 15 MHz	64QAM	1.028	Hz
TOP	LTE 15 MHz	256QAM	194	mHz
BOTTOM	LTE 20 MHz	QPSK	595	mHz
BOTTOM	LTE 20 MHz	16QAM	-137	mHz
BOTTOM	LTE 20 MHz	64QAM	-522	mHz
BOTTOM	LTE 20 MHz	256QAM	294	mHz
MIDDLE	LTE 20 MHz	QPSK	-139	mHz
MIDDLE	LTE 20 MHz	16QAM	1.299	Hz
MIDDLE	LTE 20 MHz	64QAM	-1.124	Hz
MIDDLE	LTE 20 MHz	256QAM	857	mHz
TOP	LTE 20 MHz	QPSK	960	mHz
TOP	LTE 20 MHz	16QAM	-1.437	Hz
TOP	LTE 20 MHz	64QAM	466	mHz
TOP	LTE 20 MHz	256QAM	998	mHz

Temperature = 10°C				
Channel	Signal	Modulation	Frequency Error	
BOTTOM	LTE 5 MHz	QPSK	863	mHz
BOTTOM	LTE 5 MHz	16QAM	-561	mHz
BOTTOM	LTE 5 MHz	64QAM	1.271	Hz
BOTTOM	LTE 5 MHz	256QAM	-496	mHz
MIDDLE	LTE 5 MHz	QPSK	120	mHz
MIDDLE	LTE 5 MHz	16QAM	-1.329	Hz
MIDDLE	LTE 5 MHz	64QAM	-1.352	Hz
MIDDLE	LTE 5 MHz	256QAM	-601	mHz
TOP	LTE 5 MHz	QPSK	629	mHz
TOP	LTE 5 MHz	16QAM	-637	mHz
TOP	LTE 5 MHz	64QAM	309	mHz
TOP	LTE 5 MHz	256QAM	-308	mHz
BOTTOM	LTE 10 MHz	QPSK	-861	mHz
BOTTOM	LTE 10 MHz	16QAM	-140	mHz
BOTTOM	LTE 10 MHz	64QAM	81	mHz
BOTTOM	LTE 10 MHz	256QAM	-539	mHz
MIDDLE	LTE 10 MHz	QPSK	-319	mHz
MIDDLE	LTE 10 MHz	16QAM	225	mHz
MIDDLE	LTE 10 MHz	64QAM	1.075	Hz
MIDDLE	LTE 10 MHz	256QAM	-211	mHz
TOP	LTE 10 MHz	QPSK	1.287	Hz
TOP	LTE 10 MHz	16QAM	-1.36	Hz
TOP	LTE 10 MHz	64QAM	-514	mHz
TOP	LTE 10 MHz	256QAM	615	mHz
BOTTOM	LTE 15 MHz	QPSK	-985	mHz
BOTTOM	LTE 15 MHz	16QAM	-83	mHz
BOTTOM	LTE 15 MHz	64QAM	834	mHz
BOTTOM	LTE 15 MHz	256QAM	281	mHz
MIDDLE	LTE 15 MHz	QPSK	416	mHz
MIDDLE	LTE 15 MHz	16QAM	-40	mHz
MIDDLE	LTE 15 MHz	64QAM	510	mHz
MIDDLE	LTE 15 MHz	256QAM	-608	mHz
TOP	LTE 15 MHz	QPSK	1.078	Hz
TOP	LTE 15 MHz	16QAM	39	mHz
TOP	LTE 15 MHz	64QAM	30	mHz
TOP	LTE 15 MHz	256QAM	-353	mHz
BOTTOM	LTE 20 MHz	QPSK	-632	mHz
BOTTOM	LTE 20 MHz	16QAM	-1.416	Hz
BOTTOM	LTE 20 MHz	64QAM	1.322	Hz
BOTTOM	LTE 20 MHz	256QAM	-1.164	Hz
MIDDLE	LTE 20 MHz	QPSK	-1.463	Hz
MIDDLE	LTE 20 MHz	16QAM	-363	mHz
MIDDLE	LTE 20 MHz	64QAM	395	mHz
MIDDLE	LTE 20 MHz	256QAM	-77	mHz
TOP	LTE 20 MHz	QPSK	-773	mHz
TOP	LTE 20 MHz	16QAM	-1.352	Hz
TOP	LTE 20 MHz	64QAM	1.283	Hz
TOP	LTE 20 MHz	256QAM	-777	mHz



Temperature = 20°C				
Channel	Signal	Modulation	Frequency Error	
BOTTOM	LTE 5 MHz	QPSK	-454.940	mHz
BOTTOM	LTE 5 MHz	16QAM	251.570	mHz
BOTTOM	LTE 5 MHz	64QAM	-396.480	mHz
BOTTOM	LTE 5 MHz	256QAM	332.630	mHz
MIDDLE	LTE 5 MHz	QPSK	673.190	mHz
MIDDLE	LTE 5 MHz	16QAM	-971.620	mHz
MIDDLE	LTE 5 MHz	64QAM	507.130	mHz
MIDDLE	LTE 5 MHz	256QAM	291.700	mHz
TOP	LTE 5 MHz	QPSK	-901.930	mHz
TOP	LTE 5 MHz	16QAM	-771.720	mHz
TOP	LTE 5 MHz	64QAM	-516.820	mHz
TOP	LTE 5 MHz	256QAM	700.170	mHz
BOTTOM	LTE 10 MHz	QPSK	610.990	mHz
BOTTOM	LTE 10 MHz	16QAM	676.580	mHz
BOTTOM	LTE 10 MHz	64QAM	37.254	mHz
BOTTOM	LTE 10 MHz	256QAM	697.680	mHz
MIDDLE	LTE 10 MHz	QPSK	504.540	mHz
MIDDLE	LTE 10 MHz	16QAM	-1.447	Hz
MIDDLE	LTE 10 MHz	64QAM	-1.545	Hz
MIDDLE	LTE 10 MHz	256QAM	470.310	mHz
TOP	LTE 10 MHz	QPSK	584.200	mHz
TOP	LTE 10 MHz	16QAM	-712.700	mHz
TOP	LTE 10 MHz	64QAM	463.220	mHz
TOP	LTE 10 MHz	256QAM	-91.165	mHz
BOTTOM	LTE 15 MHz	QPSK	575.490	mHz
BOTTOM	LTE 15 MHz	16QAM	-712.620	mHz
BOTTOM	LTE 15 MHz	64QAM	260.750	mHz
BOTTOM	LTE 15 MHz	256QAM	-375.920	mHz
MIDDLE	LTE 15 MHz	QPSK	842.760	mHz
MIDDLE	LTE 15 MHz	16QAM	429.080	mHz
MIDDLE	LTE 15 MHz	64QAM	820.470	mHz
MIDDLE	LTE 15 MHz	256QAM	-227.290	mHz
TOP	LTE 15 MHz	QPSK	458.980	mHz
TOP	LTE 15 MHz	16QAM	755.090	mHz
TOP	LTE 15 MHz	64QAM	1.090	Hz
TOP	LTE 15 MHz	256QAM	-466.420	mHz
BOTTOM	LTE 20 MHz	QPSK	-216.030	mHz
BOTTOM	LTE 20 MHz	16QAM	-123.120	mHz
BOTTOM	LTE 20 MHz	64QAM	-536.280	mHz
BOTTOM	LTE 20 MHz	256QAM	-681.930	mHz
MIDDLE	LTE 20 MHz	QPSK	-521.150	mHz
MIDDLE	LTE 20 MHz	16QAM	672.350	mHz
MIDDLE	LTE 20 MHz	64QAM	938.440	mHz
MIDDLE	LTE 20 MHz	256QAM	503.760	mHz
TOP	LTE 20 MHz	QPSK	602.430	mHz
TOP	LTE 20 MHz	16QAM	99.250	mHz
TOP	LTE 20 MHz	64QAM	-855.260	mHz
TOP	LTE 20 MHz	256QAM	419.010	mHz

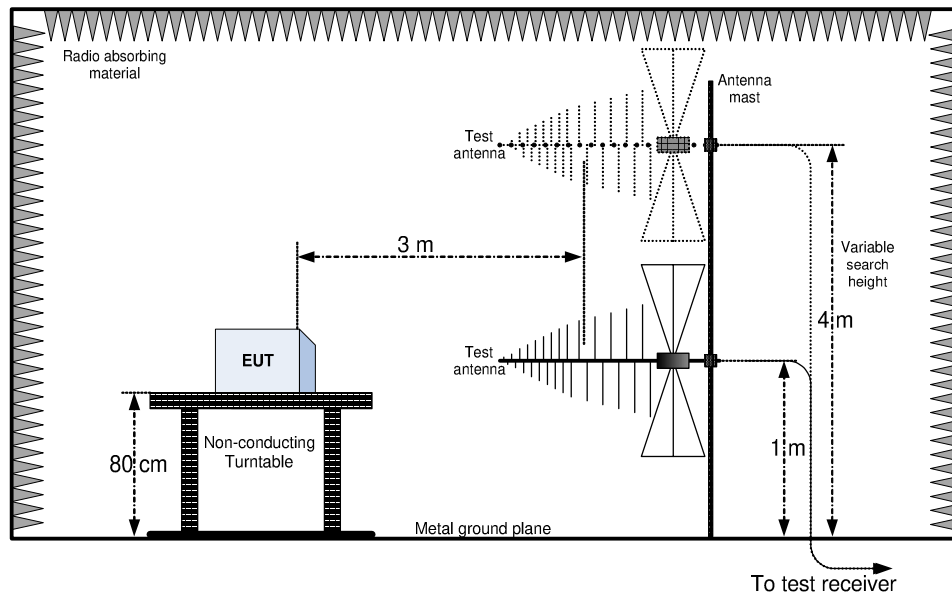
Temperature = 30°C				
Channel	Signal	Modulation	Frequency Error	
BOTTOM	LTE 5 MHz	QPSK	-1.289	Hz
BOTTOM	LTE 5 MHz	16QAM	-205	mHz
BOTTOM	LTE 5 MHz	64QAM	-1.214	Hz
BOTTOM	LTE 5 MHz	256QAM	234	mHz
MIDDLE	LTE 5 MHz	QPSK	1.459	Hz
MIDDLE	LTE 5 MHz	16QAM	1.488	Hz
MIDDLE	LTE 5 MHz	64QAM	-1.28	Hz
MIDDLE	LTE 5 MHz	256QAM	286	mHz
TOP	LTE 5 MHz	QPSK	1.048	Hz
TOP	LTE 5 MHz	16QAM	-816	mHz
TOP	LTE 5 MHz	64QAM	-198	mHz
TOP	LTE 5 MHz	256QAM	41	mHz
BOTTOM	LTE 10 MHz	QPSK	-382	mHz
BOTTOM	LTE 10 MHz	16QAM	-1.186	Hz
BOTTOM	LTE 10 MHz	64QAM	-1.281	Hz
BOTTOM	LTE 10 MHz	256QAM	-187	mHz
MIDDLE	LTE 10 MHz	QPSK	-450	mHz
MIDDLE	LTE 10 MHz	16QAM	822	mHz
MIDDLE	LTE 10 MHz	64QAM	20	mHz
MIDDLE	LTE 10 MHz	256QAM	-246	mHz
TOP	LTE 10 MHz	QPSK	-1.062	Hz
TOP	LTE 10 MHz	16QAM	-445	mHz
TOP	LTE 10 MHz	64QAM	-73	mHz
TOP	LTE 10 MHz	256QAM	-905	mHz
BOTTOM	LTE 15 MHz	QPSK	-629	mHz
BOTTOM	LTE 15 MHz	16QAM	885	mHz
BOTTOM	LTE 15 MHz	64QAM	617	mHz
BOTTOM	LTE 15 MHz	256QAM	1.326	Hz
MIDDLE	LTE 15 MHz	QPSK	1.293	Hz
MIDDLE	LTE 15 MHz	16QAM	-314	mHz
MIDDLE	LTE 15 MHz	64QAM	1.363	Hz
MIDDLE	LTE 15 MHz	256QAM	629	mHz
TOP	LTE 15 MHz	QPSK	-1.086	Hz
TOP	LTE 15 MHz	16QAM	749	mHz
TOP	LTE 15 MHz	64QAM	-633	mHz
TOP	LTE 15 MHz	256QAM	-1.036	Hz
BOTTOM	LTE 20 MHz	QPSK	594	mHz
BOTTOM	LTE 20 MHz	16QAM	-779	mHz
BOTTOM	LTE 20 MHz	64QAM	-681	mHz
BOTTOM	LTE 20 MHz	256QAM	1.178	Hz
MIDDLE	LTE 20 MHz	QPSK	-575	mHz
MIDDLE	LTE 20 MHz	16QAM	-1.022	Hz
MIDDLE	LTE 20 MHz	64QAM	893	mHz
MIDDLE	LTE 20 MHz	256QAM	101	mHz
TOP	LTE 20 MHz	QPSK	-360	mHz
TOP	LTE 20 MHz	16QAM	591	mHz
TOP	LTE 20 MHz	64QAM	-837	mHz
TOP	LTE 20 MHz	256QAM	-361	mHz

Temperature = 40°C				
Channel	Signal	Modulation	Frequency Error	
BOTTOM	LTE 5 MHz	QPSK	614	mHz
BOTTOM	LTE 5 MHz	16QAM	-353	mHz
BOTTOM	LTE 5 MHz	64QAM	-14	mHz
BOTTOM	LTE 5 MHz	256QAM	732	mHz
MIDDLE	LTE 5 MHz	QPSK	-1.417	Hz
MIDDLE	LTE 5 MHz	16QAM	-855	mHz
MIDDLE	LTE 5 MHz	64QAM	95	mHz
MIDDLE	LTE 5 MHz	256QAM	-59	mHz
TOP	LTE 5 MHz	QPSK	-873	mHz
TOP	LTE 5 MHz	16QAM	587	mHz
TOP	LTE 5 MHz	64QAM	-805	mHz
TOP	LTE 5 MHz	256QAM	-24	mHz
BOTTOM	LTE 10 MHz	QPSK	1.123	Hz
BOTTOM	LTE 10 MHz	16QAM	1.23	Hz
BOTTOM	LTE 10 MHz	64QAM	347	mHz
BOTTOM	LTE 10 MHz	256QAM	292	mHz
MIDDLE	LTE 10 MHz	QPSK	1.216	Hz
MIDDLE	LTE 10 MHz	16QAM	21	mHz
MIDDLE	LTE 10 MHz	64QAM	358	mHz
MIDDLE	LTE 10 MHz	256QAM	-110	mHz
TOP	LTE 10 MHz	QPSK	-178	mHz
TOP	LTE 10 MHz	16QAM	703	mHz
TOP	LTE 10 MHz	64QAM	1.245	Hz
TOP	LTE 10 MHz	256QAM	-1.026	Hz
BOTTOM	LTE 15 MHz	QPSK	527	mHz
BOTTOM	LTE 15 MHz	16QAM	342	mHz
BOTTOM	LTE 15 MHz	64QAM	1.021	Hz
BOTTOM	LTE 15 MHz	256QAM	-140	mHz
MIDDLE	LTE 15 MHz	QPSK	1.154	Hz
MIDDLE	LTE 15 MHz	16QAM	180	mHz
MIDDLE	LTE 15 MHz	64QAM	861	mHz
MIDDLE	LTE 15 MHz	256QAM	-1.432	Hz
TOP	LTE 15 MHz	QPSK	-779	mHz
TOP	LTE 15 MHz	16QAM	867	mHz
TOP	LTE 15 MHz	64QAM	90	mHz
TOP	LTE 15 MHz	256QAM	-165	mHz
BOTTOM	LTE 20 MHz	QPSK	-346	mHz
BOTTOM	LTE 20 MHz	16QAM	1.486	Hz
BOTTOM	LTE 20 MHz	64QAM	1.163	Hz
BOTTOM	LTE 20 MHz	256QAM	223	mHz
MIDDLE	LTE 20 MHz	QPSK	1.374	Hz
MIDDLE	LTE 20 MHz	16QAM	-834	mHz
MIDDLE	LTE 20 MHz	64QAM	808	mHz
MIDDLE	LTE 20 MHz	256QAM	680	mHz
TOP	LTE 20 MHz	QPSK	-1.427	Hz
TOP	LTE 20 MHz	16QAM	1.414	Hz
TOP	LTE 20 MHz	64QAM	-1.135	Hz
TOP	LTE 20 MHz	256QAM	1.318	Hz

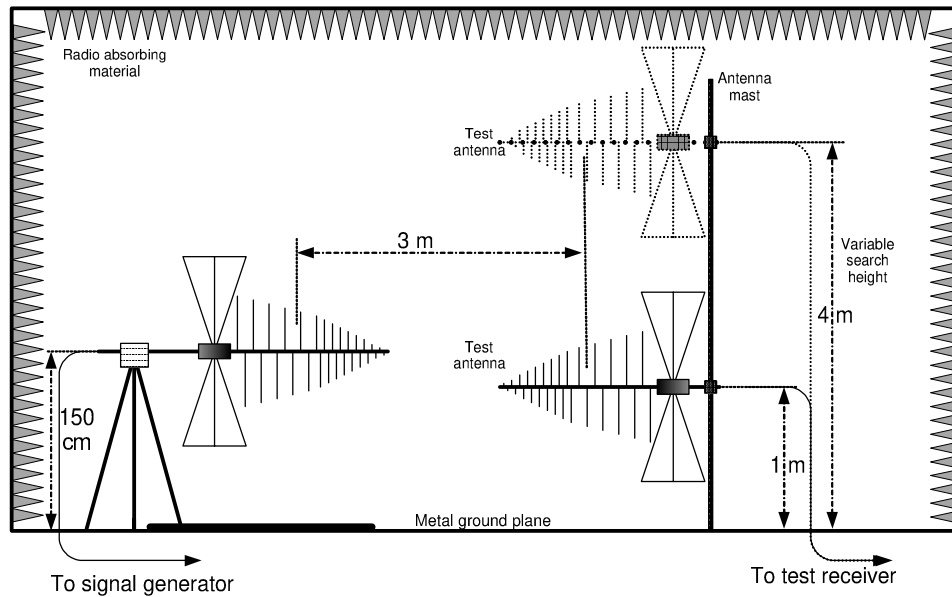
Temperature = 50°C				
Channel	Signal	Modulation	Frequency Error	
BOTTOM	LTE 5 MHz	QPSK	-1.036	Hz
BOTTOM	LTE 5 MHz	16QAM	88	mHz
BOTTOM	LTE 5 MHz	64QAM	-929	mHz
BOTTOM	LTE 5 MHz	256QAM	485	mHz
MIDDLE	LTE 5 MHz	QPSK	239	mHz
MIDDLE	LTE 5 MHz	16QAM	102	mHz
MIDDLE	LTE 5 MHz	64QAM	-1.242	Hz
MIDDLE	LTE 5 MHz	256QAM	1.44	Hz
TOP	LTE 5 MHz	QPSK	1.499	Hz
TOP	LTE 5 MHz	16QAM	-11	mHz
TOP	LTE 5 MHz	64QAM	-1.048	Hz
TOP	LTE 5 MHz	256QAM	221	mHz
BOTTOM	LTE 10 MHz	QPSK	276	mHz
BOTTOM	LTE 10 MHz	16QAM	-472	mHz
BOTTOM	LTE 10 MHz	64QAM	109	mHz
BOTTOM	LTE 10 MHz	256QAM	607	mHz
MIDDLE	LTE 10 MHz	QPSK	859	mHz
MIDDLE	LTE 10 MHz	16QAM	-839	mHz
MIDDLE	LTE 10 MHz	64QAM	537	mHz
MIDDLE	LTE 10 MHz	256QAM	89	mHz
TOP	LTE 10 MHz	QPSK	-1.16	Hz
TOP	LTE 10 MHz	16QAM	-689	mHz
TOP	LTE 10 MHz	64QAM	1.411	Hz
TOP	LTE 10 MHz	256QAM	772	mHz
BOTTOM	LTE 15 MHz	QPSK	391	mHz
BOTTOM	LTE 15 MHz	16QAM	-1.438	Hz
BOTTOM	LTE 15 MHz	64QAM	1.097	Hz
BOTTOM	LTE 15 MHz	256QAM	-150	mHz
MIDDLE	LTE 15 MHz	QPSK	-206	mHz
MIDDLE	LTE 15 MHz	16QAM	-581	mHz
MIDDLE	LTE 15 MHz	64QAM	1.38	Hz
MIDDLE	LTE 15 MHz	256QAM	862	mHz
TOP	LTE 15 MHz	QPSK	-885	mHz
TOP	LTE 15 MHz	16QAM	-411	mHz
TOP	LTE 15 MHz	64QAM	-711	mHz
TOP	LTE 15 MHz	256QAM	-293	mHz
BOTTOM	LTE 20 MHz	QPSK	-1.083	Hz
BOTTOM	LTE 20 MHz	16QAM	-57	mHz
BOTTOM	LTE 20 MHz	64QAM	139	mHz
BOTTOM	LTE 20 MHz	256QAM	-629	mHz
MIDDLE	LTE 20 MHz	QPSK	-95	mHz
MIDDLE	LTE 20 MHz	16QAM	-1.35	Hz
MIDDLE	LTE 20 MHz	64QAM	-701	mHz
MIDDLE	LTE 20 MHz	256QAM	-1.337	Hz
TOP	LTE 20 MHz	QPSK	-1.46	Hz
TOP	LTE 20 MHz	16QAM	-1.166	Hz
TOP	LTE 20 MHz	64QAM	-1.338	Hz
TOP	LTE 20 MHz	256QAM	-995	mHz

## Appendix B: Block diagrams of test set-ups

### Radiated emissions set-up



### Substitution method set-up



## Appendix C: EUT Photos

### Photo Set up

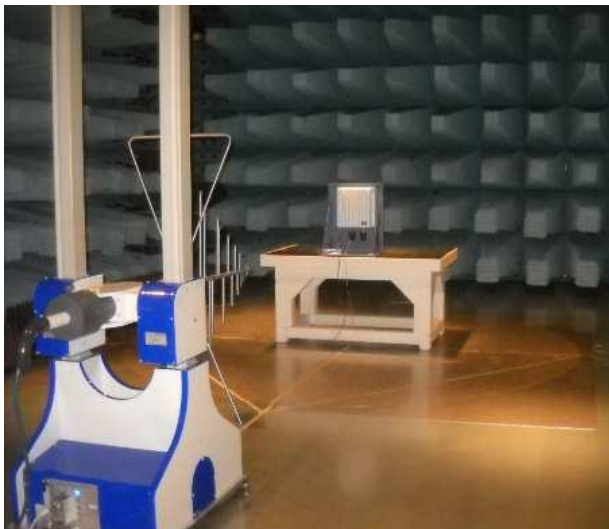
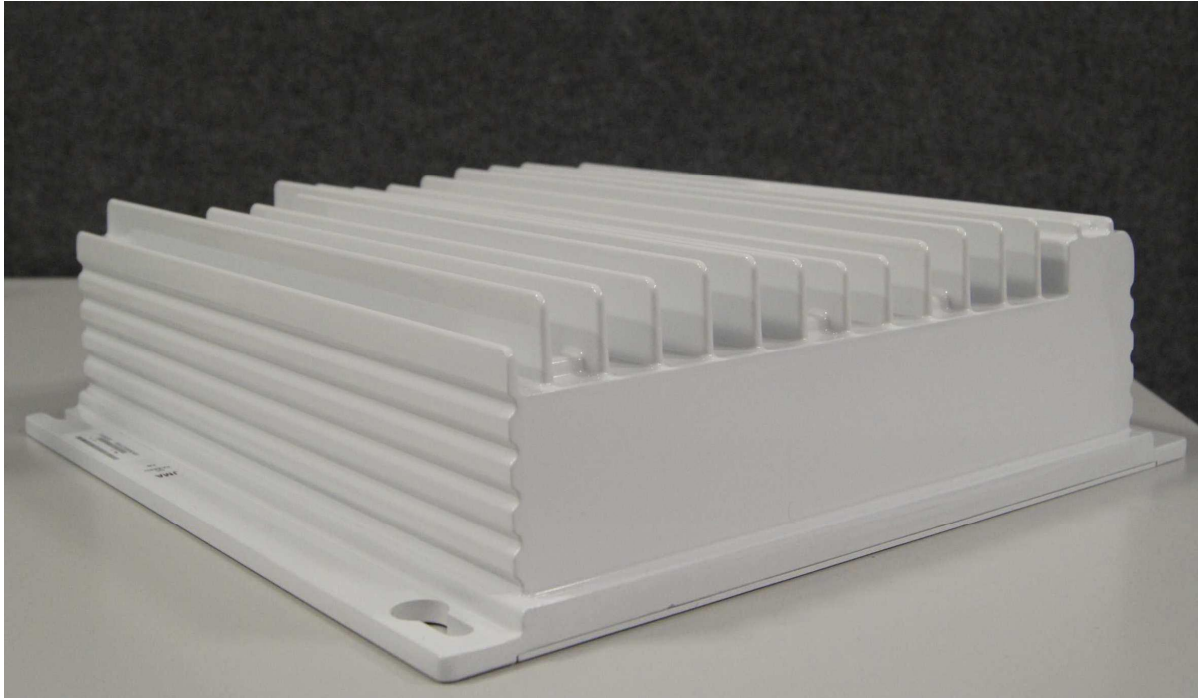




Photo EUT





END OF REPORT