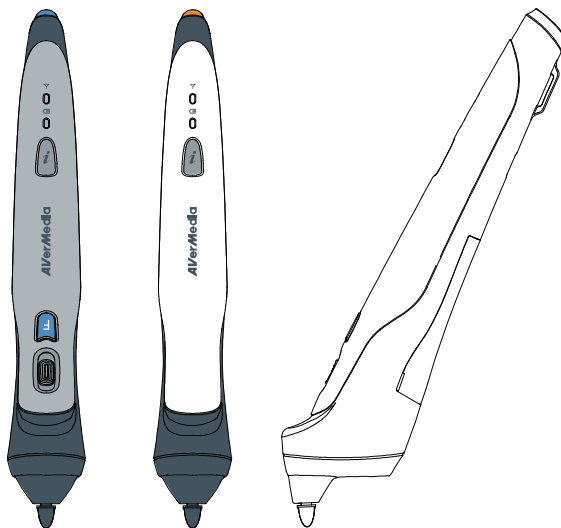


# New *A*Ver<sup>TM</sup>Pen

---

## Quick Guide



## Federal Communication Commission Interference Statement

**FC** This equipment has been tested and found to comply with the limits for a Class B digital device, pursuant to Part 15 of the FCC Rules. These limits are designed to provide reasonable protection against harmful interference in a residential installation. This equipment generates, uses and can radiate radio frequency energy and, if not installed and used in accordance with the instructions, may cause harmful interference to radio communications. However, there is no guarantee that interference will not occur in a particular installation. If this equipment does cause harmful interference to radio or television reception, which can be determined by turning the equipment off and on, the user is encouraged to try to correct the interference by one of the following measures:

- Reorient or relocate the receiving antenna.
- Increase the separation between the equipment and receiver.
- Connect the equipment into an outlet on a circuit different from that to which the receiver is connected.
- Consult the dealer or an experienced radio/TV technician for help.

This device complies with Part 15 of the FCC Rules. Operation is subject to the following two conditions: (1) This device may not cause harmful interference, and (2) this device must accept any interference received, including interference that may cause undesired operation.

**FCC Caution:** Any changes or modifications not expressly approved by the party responsible for compliance could void the user's authority to operate this equipment.

### IMPORTANT NOTE: FCC Radiation Exposure Statement:

This equipment complies with FCC radiation exposure limits set forth for an uncontrolled environment. End users must follow the specific operating instructions for satisfying RF exposure compliance.

This transmitter must not be co-located or operating in conjunction with any other antenna or transmitter.

### CE NOTICE



This is a Class B product.

## Class I LASER Product

低功率電波輻射性電機管理辦法

第十二條

經型式認證合格之低功率射頻電機，非經許可，公司、商號或使用者均不得擅自變更頻率、加大功率或變更原設計之特性及功能。

第十四條

低功率射頻電機之使用不得影響飛航安全及干擾合法通信；經發現有干擾現象時，應立即停用，並改善至無干擾時方得繼續使用。

前項合法通信，指依電信法規定作業之無線電通信。

低功率射頻電機須忍受合法通信或工業、科學及醫療用電波輻射性電機設備之干擾。

## **DISCLAIMER**

No warranty or representation, either expressed or implied, is made with respect to the contents of this documentation, its quality, performance, merchantability, or fitness for a particular purpose. Information presented in this documentation has been carefully checked for reliability; however, no responsibility is assumed for inaccuracies. The information contained in this documentation is subject to change without notice.

In no event will AVerMedia be liable for direct, indirect, special, incidental, or consequential damages arising out of the use or inability to use this product or documentation, even if advised of the possibility of such damages.

## **TRADEMARKS**

"AVerMedia" is a trademark (or registered trademark) of AVerMedia Technologies, Inc and has been authorized AVerMedia Information Inc to use. "AVerVision" and "AVer" are trademarks (or registered trademarks) of AVerMedia Information, Inc. Other trademarks used herein for description purpose only belong to each of their companies.

## **COPYRIGHT**

©2011 by AVerMedia Information, Inc. All right reserved. No part of this document may be reproduced or transmitted in any form, or by any means without the prior written permission of AVerMedia Information Inc. AVerMedia Information Inc. reserves the right to modify its models, including their characteristics, specifications, accessories and any other information stated herein without notice. The official printout of any information shall prevail should there be any discrepancy between the information contained herein and the information contained in that printout.



THE MARK OF CROSSED-OUT WHEELED BIN INDICATES THAT THIS PRODUCT MUST NOT BE DISPOSED OF WITH YOUR OTHER HOUSEHOLD WASTE. INSTEAD, YOU NEED TO DISPOSE OF THE WASTE EQUIPMENT BY HANDING IT OVER TO A DESIGNATED COLLECTION POINT FOR THE RECYCLING OF WASTE ELECTRICAL AND ELECTRONIC EQUIPMENT. FOR MORE INFORMATION ABOUT WHERE TO DROP OFF YOUR WASTE EQUIPMENT FOR RECYCLING, PLEASE CONTACT YOUR HOUSEHOLD WASTE DISPOSAL SERVICE OR THE SHOP WHERE YOU PURCHASED THE PRODUCT.



# Table of Contents

Introduction .....	1
<b>Minimum System Requirements .....</b>	<b>1</b>
Package Contents .....	2
Technical Specification .....	3
Teacher Pen Parts .....	4
Student Pen Parts .....	5
Charging Teacher Pen.....	6
Replacing the Battery.....	6
Connecting the USB Dongle to Computer .....	7
Using the Teacher Pen Slide Switch .....	7
Holding the Pen .....	7
Antenna and Battery LED Status .....	8
Teacher Pen.....	8
Student Pen.....	8
Binding the AVerPen with the Dongle .....	9

## Introduction

Thank you for purchasing AVerMedia® New AVer™Pen. The New AVerPen comes in 2 different packages: teacher pack, and student pack. Each package comes with a dongle that uses advanced 2.4GHz license exempt radio-frequency wireless technology. The pens are already pre-bound with the dongle in the factory. All you need is to install the bundled software and connect the dongle to any free USB slot in your computer.

The New AVerPen design allows the optical pen sensor to have flawless accurate motion detection and easy pen holding. It uses (1) AAA battery which could last for about 8 hour non-stop operation.

## Minimum System Requirements

### For Windows XP

- Intel Pentium III 1 GHz or later x86 processor (Intel Core 2 Duo 1.66GHz recommended)
- 512 MB of RAM (1 GB recommended)
- 100 MB free hard disk space for basic installation (w/o Gallery content)
- CD-ROM and USB 1.1 or above

### For Windows Vista

- Intel Core Duo 1.5 GHz or later x86 processor (Intel Core 2 Duo 1.66GHz recommended)
- 1 GB of RAM (2 GB recommended)
- 100 MB free hard disk space for basic installation (w/o Gallery content)
- CD-ROM and USB 1.1 or compatible

### For Mac OS 10.4 and later

- 1GHz G4 processor or Intel Core Duo 1.83 GHz or later x86 processor (Intel Core 2 Duo 2.0 GHz recommended)
- 1 GB of RAM (2 GB recommended)
- 100 MB free hard disk space for basic installation (w/o Gallery content)
- CD-ROM and USB 1.1 or compatible

## Package Contents

Check the items in the table below the type of package you have.

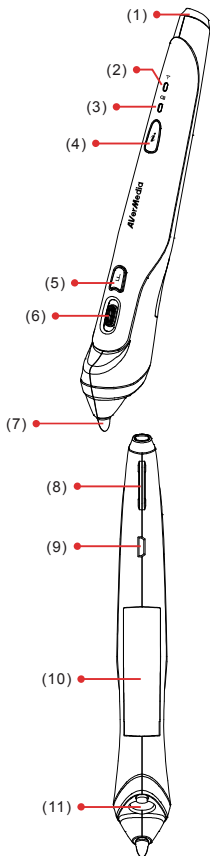
Items	Teacher Pack	Student Pack
	QTY	QTY
Installation CD	1	1
User Manual CD	1	1
Dual USB Port AC Charger	1	-
USB Cable	1	-
Lanyard Chord	1	-
Pen Pouch	1	1
Warranty Card	1	1
Quick Guide	1	1
Pen Sticker	10/sheet	10/sheet
Dongle	1	1
Battery	Rechargeable	Non-rechargeable

## Technical Specification

<b>Length</b>	5.94in (151mm)
<b>Weight</b>	1.59oz (45g)
<b>Buttons</b>	Teacher Pen: Power, Info, F (right-click button), Scroll Up/Down, and Pen tip (left-click button) Student Pen: Power, Info, and Pen tip (left-click button)
<b>Wireless technology</b>	2.4GHz RF Wireless
<b>Range</b>	50ft (15m)
<b>Bandwidth supports up to</b>	7 AVerPen simultaneous operation
<b>Memory</b>	register up to 50 AVerPen
<b>Pen tip technology</b>	proprietary optical sensor
<b>Connectivity</b>	USB dongle
<b>Battery</b>	AAA size
<b>Battery time</b>	8 hours non-stop operation
<b>Power adapter</b>	input : 100-240V / 50-60Hz / 0.4A output : 5V / 3A
<b>Operating temperature</b>	0-40°C (32-104°F)
<b>Warranty</b>	3 years for the New AVerPen, 1 year for the accessories.
<b>Certifications</b>	FCC, CE

## Teacher Pen Parts

The teacher pen can be used in multiple ways and behaves like a master pen which can fully control all the functions with the bundled software. It allows you to use it as a full function mouse with left and right buttons and scroll wheel, use it as a wireless remote presenter to control your PowerPoint slide presentation, and use it to operate the Windows media player.

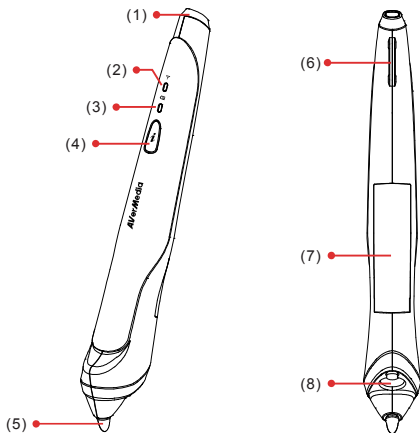


Name	Function
(1) Power	Turn on/off the pen. Press and hold the power button for more than 3 sec to completely turn off the pen.
(2) Antenna LED Indicator	Show the signal strength.
(3) Battery LED Indicator	Show the battery strength.
(4) Info	Check the signal strength and battery status.
(5) Function	Use as the right-click button, start/stop slide show when using in MS PowerPoint, or play/pause the video when using in Windows Media Player.
(6) Slide switch	Use as the mouse wheel, change slide in MS PowerPoint, or adjust the volume in Windows media player. Push it towards F button to scroll down, go to previous slide, or increase the volume and away to scroll up, go to next slide, or decrease the volume.
(7) Pen tip	Use as the left-click button to make a selection.
(8) Lanyard hole	Attach the supplied lanyard strap.
(9) Mini USB port	Use to recharge the battery.
(10) Battery Compartment	Use the supplied rechargeable AAA battery.
(11) Optical Pen Sensor	Detect the movement of the pen to control the motion of the cursor.



## Student Pen Parts

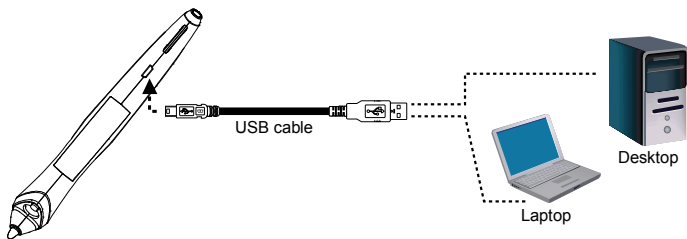
The student pen is restricted to fewer features and can only be used with the bundled software. It requires activating it with the use of a teacher pen or use the computer mouse to enable the student pen to annotate on the screen.



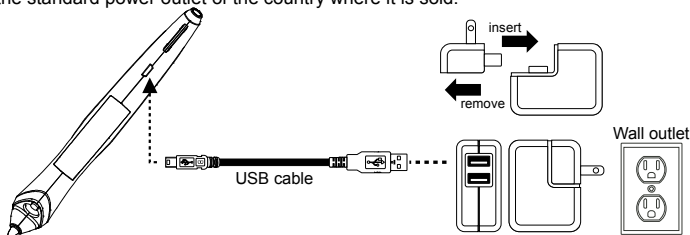
Name	Function
(1) Power	Turn on/off the pen. Press and hold the power button for more than 3 sec to completely turn off the pen.
(2) Antenna LED indicator	Show the signal strength.
(3) Battery LED indicator	Show the battery strength.
(4) Info	Check the signal strength and battery status.
(5) Pen tip	Use as the left-click button to make a selection.
(6) Lanyard hole	Attach a lanyard strap.
(7) Battery compartment	Insert the supplied non-rechargeable AAA size battery.
(8) Optical pen sensor	Detect the movement of the pen to control the motion of the cursor.

## Charging Teacher Pen

Make sure the battery used in teacher pen is an AAA size rechargeable battery. Use the supplied USB cable and connect the mini USB jack to the pen and the other end to computer USB port.

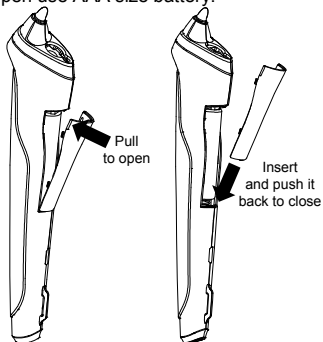


You may also use the supplied dual USB port AC charger. Plug the dual USB port AC charger to a standard 100V~240V AC power outlet. The adapter plug will vary depending on the standard power outlet of the country where it is sold.



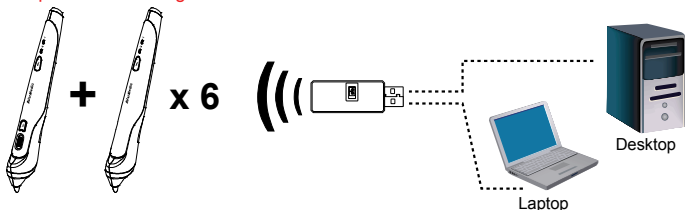
## Replacing the Battery

Both teacher and student pen use AAA size battery.



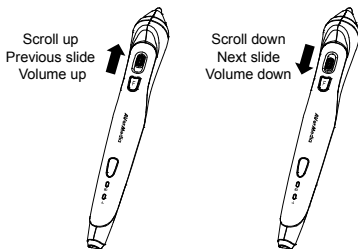
## Connecting the USB Dongle to Computer

The USB dongle can detect the pens within the range of up to 50ft (15m). You can register a maximum of 50 pens per dongle and allows 1 teacher pen and 6 student pen to interact on the same page at the same time. To register the pen with the USB dongle, you need to bind the pen with the dongle.



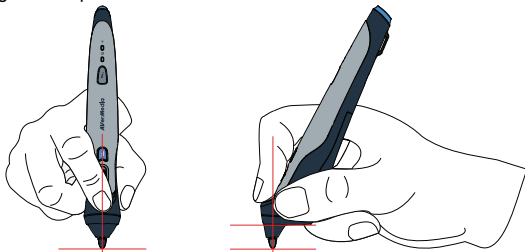
## Using the Teacher Pen Slide Switch

The slide switch in teacher pen acts like the mouse wheel. Pushing towards the pen tip allows you scroll up, switch to previous slide when using it with PowerPoint and increase volume when using it with Windows Media Player. Pushing towards the pen tail allows you to scroll down, switch to next slide and decrease volume.




## Holding the Pen

Grab the AVerPen and hold it as you would normally do with a pen. Keep the pen sensor and the writing surface parallel.



## Antenna and Battery LED Status

Each time you power on the AVerPen, the LED will light to indicate the antenna strength and battery status. To check the antenna strength and battery status, press  button.

### Teacher Pen

Antenna LED	Flash Pattern	State
Green	Flash 3 times and off	Connected
Red	Continuous flashing	No connection
Green + Red	Alternate flashing	Binding with the USB dongle in progress

Battery LED	Flash Pattern	State
Green	Solid for 3 sec and off	> 30% battery life / Power on
	Remain solid	Fully charged
Red	Solid for 3 sec and off	Power off
	Continuous flashing	$\leq$ 10% battery life
	Remain solid	Charging in progress
Amber	Solid for 3 sec and off	$\leq$ 30% and > 10% battery life

### Student Pen

Antenna LED	Flash Pattern	State
Green	Flash 3 times and off	Connected / Activate student to annotate on the screen
Green + Red	Alternate flashing	Binding with the USB dongle in progress
Red	Flash 3 times and off	Deactivate student to annotate on the screen
	Continuous flashing	No connection
Amber	Flash 3 sec and off	Response to AVerPen ID query

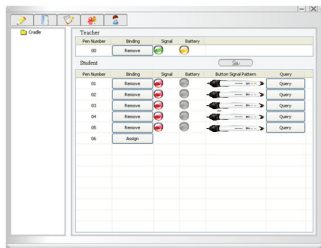
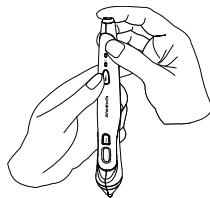
  

Battery LED	Flash Pattern	State
Green	Solid for 3 sec and off	> 30% battery life / Power on
Red	Continuous flashing	$\leq$ 10% battery life
	Solid for 3 sec and off	Power off
Amber	Solid for 3 sec and off	$\leq$ 30% and < 10% battery life

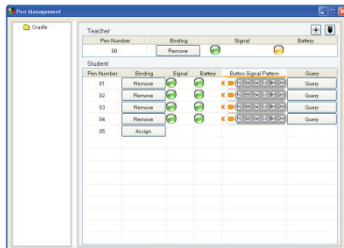
## Binding the AVerPen with the Dongle

In the bundled software Management/Device Management panel, Binding column, click Assign/Add and press the pen

and buttons at the same time. If you are binding a teacher pen, the button in the Binding column will change to Remove button in Teacher table and as for student pen, a new pen will appear in Student table.



AVer+ v1.7



AVer+ 2

## Troubleshooting

Problem	Cause	Solution
Mouse cursor is not responding with the teacher pen	<ul style="list-style-type: none"> <li>Teacher pen is not bound with the dongle.</li> <li>USB dongle is not properly connected to the computer USB port.</li> <li>Teacher pen is power off.</li> <li>Battery life is too low.</li> </ul>	<ul style="list-style-type: none"> <li>Click Assign/Add in the Binding column.</li> <li>Press the pen and buttons at the same time.</li> <li>Check the USB connection.</li> <li>Turn on the pen.</li> <li>Replace the battery.</li> </ul>
Mouse cursor is not responding with the student pen	<ul style="list-style-type: none"> <li>Student pen is not bound with the dongle.</li> <li>Battery life is too low.</li> <li>USB dongle is not properly connected to the computer USB port.</li> </ul>	<ul style="list-style-type: none"> <li>Click Assign/Add in the Binding column.</li> <li>Press the pen and buttons at the same time.</li> <li>Check the USB connection.</li> <li>Replace the battery.</li> </ul>
Mouse cursor moves	The cursor speed is set	

---

too fast

---

too high.

---

---

---

---