

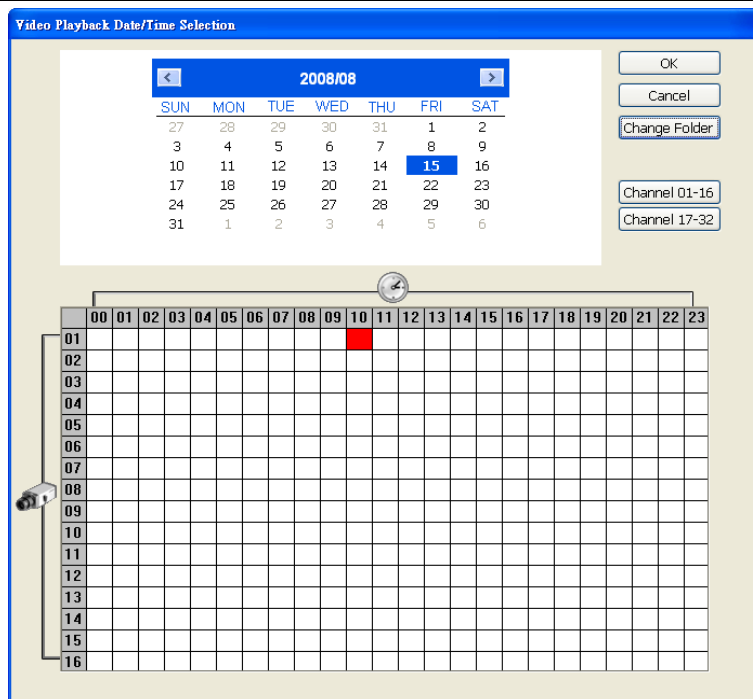
### 4.3.3 Playback Backup File(\*.dvr)

1. Click Open File button.
2. Select **Backup File(\*.dvr)** and click **OK**.
3. Locate the backup file folder and click **OK**.

**i** When open the backup video file, just locate the folder of backup file

4. And then, Playback Date/Time Selection window appears. Select the date and time and click **OK**.

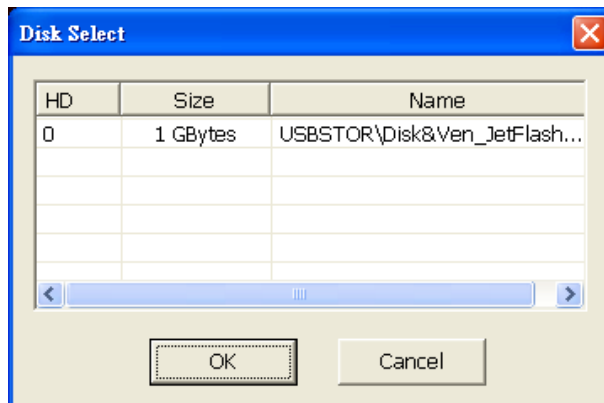
**i** When channels of the DVR is less than 16 channels, the **Channel 01~~16** and **Channel 17~32** buttons are nonfunctional.



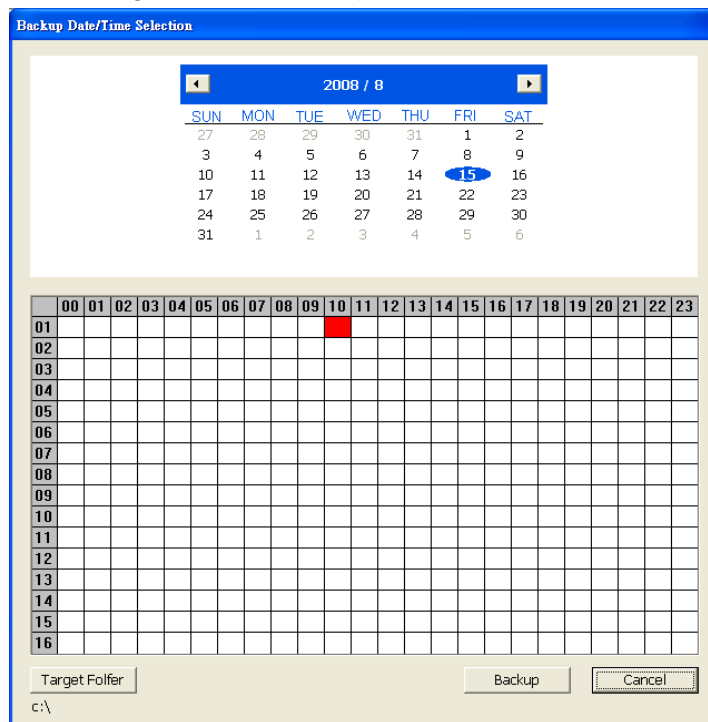
### 4.3.4 To Backup Recorded File

HDD backup function allows user to backup recorded file from hard disk.

1. Click **Adv. Function** → **HDD Backup** on USB Playback Console UI.
2. Select the source hard disk.



3. In Backup date/time selection window, select the date and time. 00-24 represents hours and 01-04 represents channels. Blue block means there has recorded file. Red block means the block has been selected. Click-and-drag can select multiple block at once.



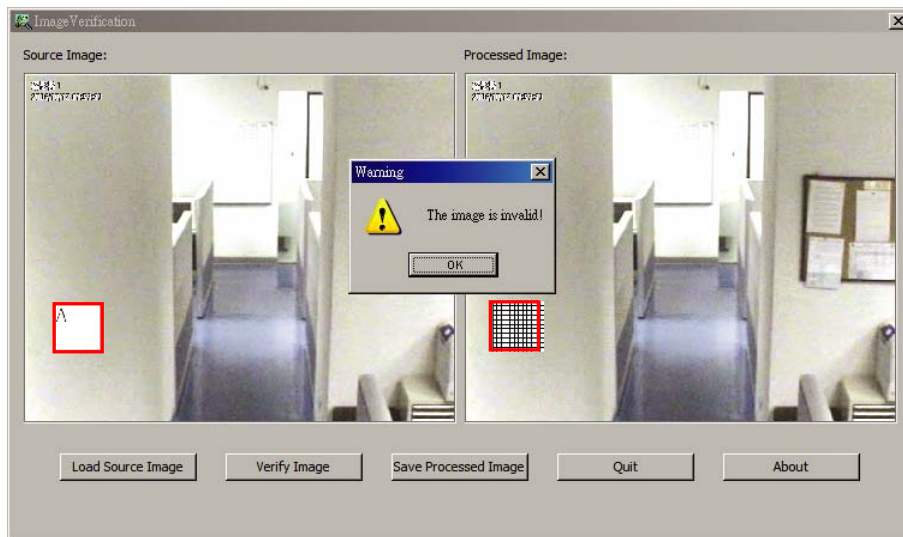
4. Click **Backup** to start backup file.
5. When backup complete, the complete information window will display.

# Chapter 5 ImageVerification

Image Verification is a watermark-checking program to identify the authenticity of a saved image (e.g. by snapshot). This program can only verify uncompressed bmp image files.

## 5.1 To Run the ImageVerification

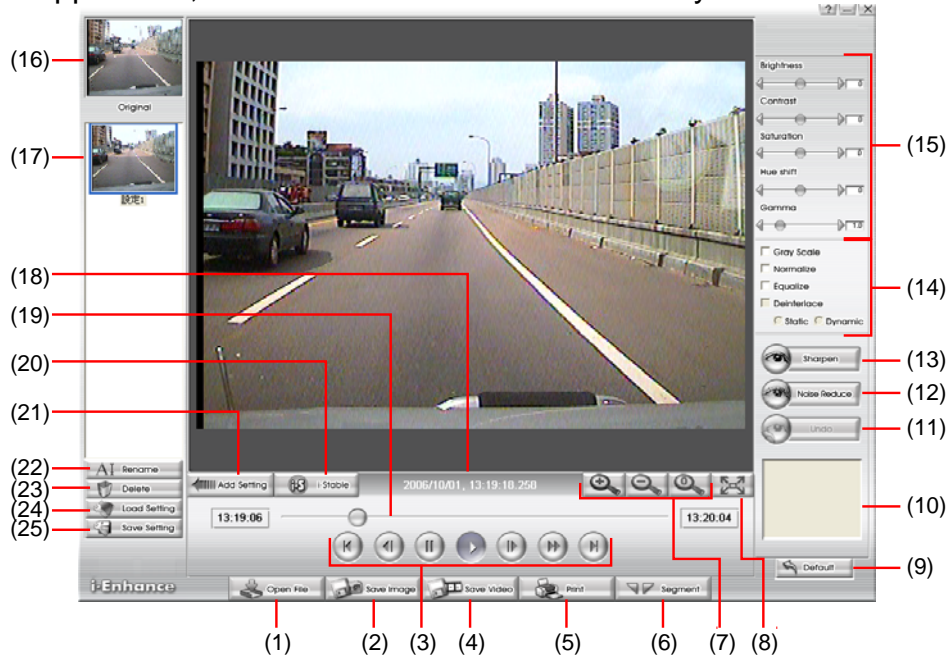
1. To run the ImageVerification application, click the **Watermark** button on USB Playback Application main interface.
2. In the ImageVerification screen, click **Load Source Image** and locate the image source.
3. Click **Verify Image** to begin the process.
4. Check the result in the **Processed Image** screen. If the picture is unmodified, the image in the **Source Image** and **Processed Image** screen would be exactly the same. If the picture is being modified, a warning dialog box would prompt and the modified area is highlighted.



# Chapter 6 iEnhance

The bundled iEnhance is a video editing tool and can only be used with \*.dvr video file. It allows you to adjust the video picture quality, segment and save the selected portion of the video, zoom in and out the image, and print or save the screen shot. You can also save the setting and apply it on other files.

To run iEnhance application, click **iEnhance** button on USB Playback Console interface.



Name	Function
(1) Open File	Access *.dvr video file.
(2) Save Image	Capture and save the screen shot in *.bmp format.
(3) Playback Control Buttons	<ul style="list-style-type: none"> <li> <b>Begin:</b> Move at the beginning of the video file.</li> <li> <b>Previous:</b> Go back to previous frame.</li> <li> <b>Pause:</b> Briefly stop playing the video file.</li> <li> <b>Play:</b> Play the video file.</li> <li> <b>Faster:</b> Play the video file at the faster speed.</li> <li> <b>Next:</b> Go to the next frame.</li> <li> <b>End:</b> Go to the end of the video file.</li> </ul>
(4) Save Video	Save the edited or segmented video in *.avi format.
(5) Print	Print the screen shot.
(6) Segment	Mark the beginning and the end of the selected portion of the video. Two triangle marks will appear on the slider. To cancel video segmentation, click this button again.
(7) Zoom Buttons	Enlarge, reduce, and set the image back to normal size.
(8) Full Screen	Use the entire screen to only display the video.
(9) Default	Set the video back to original state and delete all the changes in the history box.
(10) History Box	List all the actions.
(11) Undo	Delete the last action.

Name	Function
(12) Noise Reduce	Adjust the softness and repair the damaged colours.
(13) Sharpness	Improve the overall image by enhancing edges. This gives the image more depth.
(14) Effects	<p><b>Gray Scale:</b> convert the image into black and white (monochrome).</p> <p><b>Normalize:</b> adjust the brightness intensity.</p> <p><b>Equalize:</b> automatically adjust the images that are too dark.</p> <p><b>De-interlace:</b> smooth out the overlying frames.</p> <ul style="list-style-type: none"> <li>■ <b>Static:</b> de-interlace for motionless scene.</li> <li>■ <b>Dynamic:</b> de-interlace for moving scene.</li> </ul>
(15) Picture Adjustment	Adjust the Brightness, Contrast, Saturation, Hue and Gamma.
(16) Original Screen	Display the original state of the image.
(17) Temporary Setting Block	Display the sample settings. Click the sample to apply the setting on the current video.
(18) Status Bar	Display the date, and time of the video.
(19) Progress Bar	Show the progress of the file being played. You may move the bar to seek at any location of the track.
(20) iStable	To reduce the jolt in the recorded video.(also see <a href="#">Chapter 6.1</a> )
(21) Add Setting	Include the new setting to the temporary setting block.
(22) Rename	Change the name of the selected setting in the temporary setting block.
(23) Delete	Permanently remove the selected setting in the temporary setting block.
(24) Load Setting	Call the saved settings.
(25) Save Setting	Store the settings in the temporary setting block.

## 6.1 To Use iStable

The iStable function can reduce the jolt in the recorded video.

1. Click **Open File** button and select the recorded video.
2. And then, click **iStable** button.
3. iStable window will show up.
4. Select the **smoothness** level – 1(Low), 2, 3, 4, and 5(High). The default value is 3.
5. Click Play button, and then iStable function will start to initial the recorded video.
6. When the initialize is done, user will see the original and stabilized recorded video in two window.

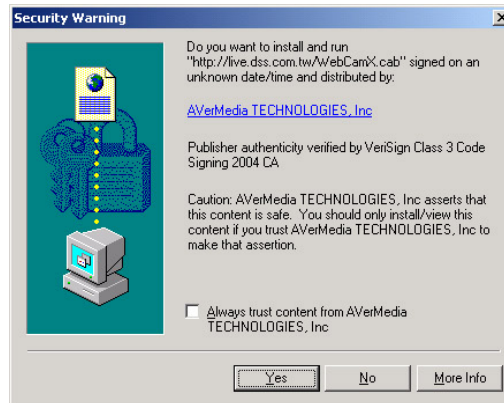


# Chapter 7 Using the Remote Programs

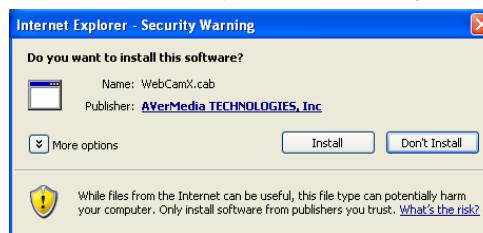
User can use Microsoft Internet Explorer to access DVR system by entering the IP address. To use this feature, make sure that your PC and DVR server both are connected to the internet and the Network feature is enabled.

Accessing this feature for the first time you will be prompted by your browser to install WebCamX.cab, allow the installation and you should be able to connect and login afterwards.

For Windows 2000, click **Yes** when the Security Warning dialog box appears.

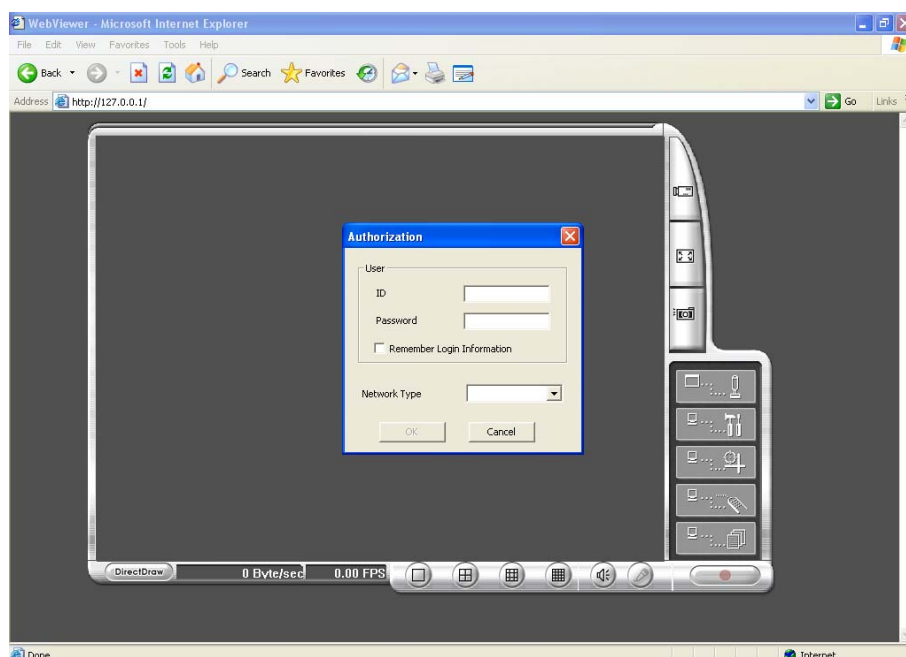


For Windows XP, click Install when the Internet Explorer - Security Warning dialog box appears.



After installing the WebCamX.cab and when connecting to the DVR system, you are required to enter account ID (superuser / user) and password (111111/111111) and select the type of network. **Superuser** has the authority to remote setup the DVR system configuration on WebViewer. **User** only can preview the video on WebViewer and Remote Console.



**i** Changing account password is strongly recommended.



## 7.1 Familiarizing the Buttons in WebViewer

Right-clicking on the WebViewer video screen, enables you to start video recording, change video quality, switch camera and enable/disable DirectDraw.

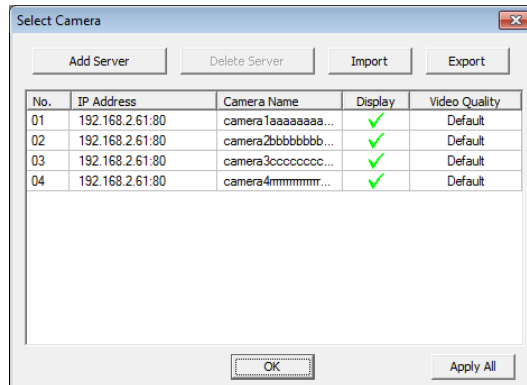


Name	Function
(1) DirectDraw	Enhance the video quality.
 Not all graphic cards can support this function. If you cannot see the screen display correctly or screen is messed, please check with VGA card vendor.	
(2) Received file size	Indicate the size of the data being sent per second.
(3) Camera frames	Indicate the number of frames per second.
(4) One screen view	To view single camera view on screen. User can right click on the screen to switch to different camera view.
(5) Split screen view	To view all cameras on screen simultaneously.
(6) Audio	Enable/disable remote sound.
(7) Record	Start to record the video of the selected camera in AVI format. Directly click screen to select the channel that user wants to record and press <b>Record</b> button.
(8) Remote Console	Initiate Remote Console. It allows you to control DVR server (see also <a href="#">Chapter 7.2</a> ).
(9) Event Log Viewer	Display the Event logs, Operation logs, System logs, and Network logs.
(10) Remote setup	Change the DVR server settings (see also <a href="#">Chapter 7.1.1</a> )
(11) PTZ Control	Initiate PTZ camera controller.
 The EXR6004 WiFi doesn't support PTZ function.	
(12) Snapshot	Capture and save the screen shot in *.bmp format.
(13) Full screen	Use the entire area of the screen to only display the video. To return, Right click the mouse or press ESC on the keyboard.

Name	Function
------	----------

(14) Select cameras to view

Select to the view camera from different server. In Select Camera dialog box, Display column, click to enable/disable viewing the camera.  
Click **Add Server** and select the server type between DVR and IP Cam to add.  
Click **Delete Server** to delete the selected item.  
Click **Import** to load the previous saved list.  
Click **Export** to save the list.  
Click **Apply All** to change all the camera video quality based on the selected setting.  
Click **OK** to exit.



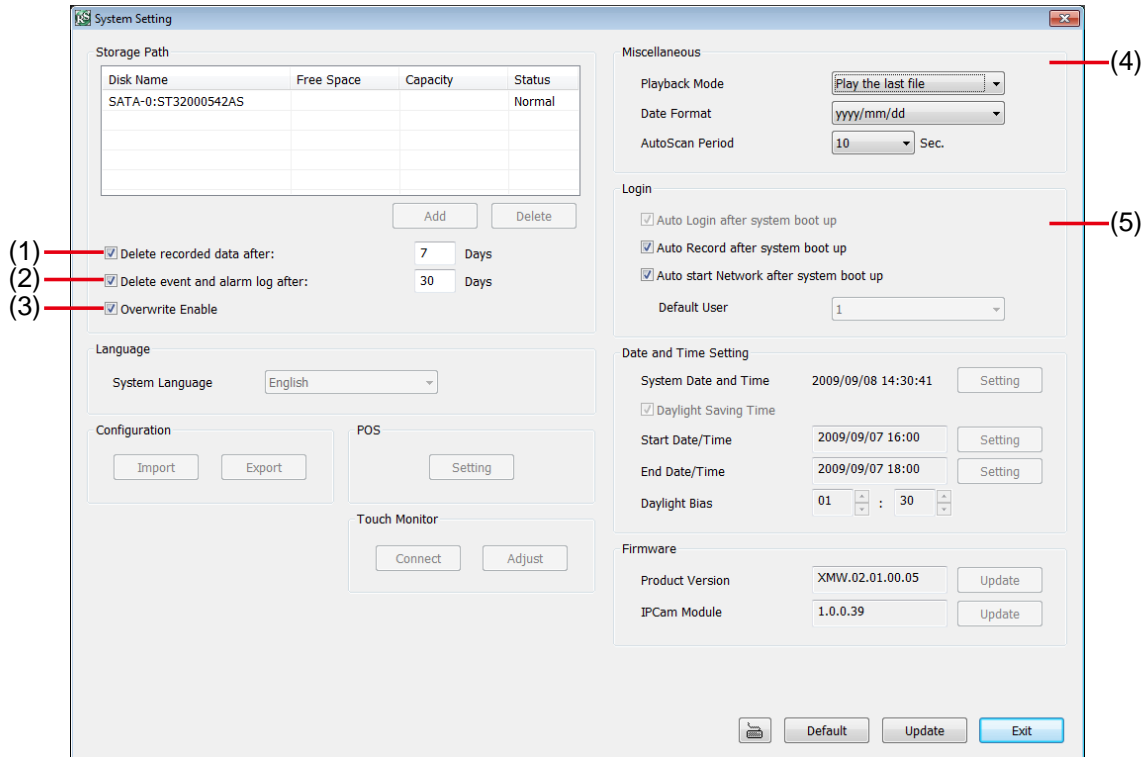


## 7.1.1 To Setup Remote System Setting

The setting here applies to Remote DVR only.

### 7.1.1.1 System Setting

In the System Setting window, click **Update** to accept the new settings, click **Exit** to exit without saving, and click **Default** to revert back to original factory setting.



#### (1) Delete recorded data after

If you want the system to automatically erase the data after a certain days, enable the **Delete recorded data after** check box and enter the numbers of days in **Days** text box.

#### (2) Delete event and alarm log after

If you want the system to automatically erase the event and alarm log files after a certain days, enable the **Delete event and alarm log after** check box and enter the numbers of days in **Days** text box.

#### (3) Overwrite Enable

When there is not enough free space to record one hour data, the system automatically replaces the oldest data.

#### (4) Miscellaneous

Enable the conditions in **Miscellaneous** section you want the system to perform.

##### - Playback Mode

Select the mode of playback the video.

**Select date and time:** Select the date and time which user wants to playback.

**Play the last file:** Automatically playback the video from the last hour

**Instant Playback:** Automatically playback the video which has just recorded

##### - Date Format

Select the date format which wants to display in **Select date and time** playback mode

##### - Auto Scan Period

Set the time gap of the Auto Scan function from 3 to 10 seconds. This automatically switches to the next video in cycle depending on the set time gap.

#### (5) Login

Enable the conditions in Login section you want the system to automatically carry out.

##### - Auto Record after system boot up

Automatically start video recording when the DVR is executed.

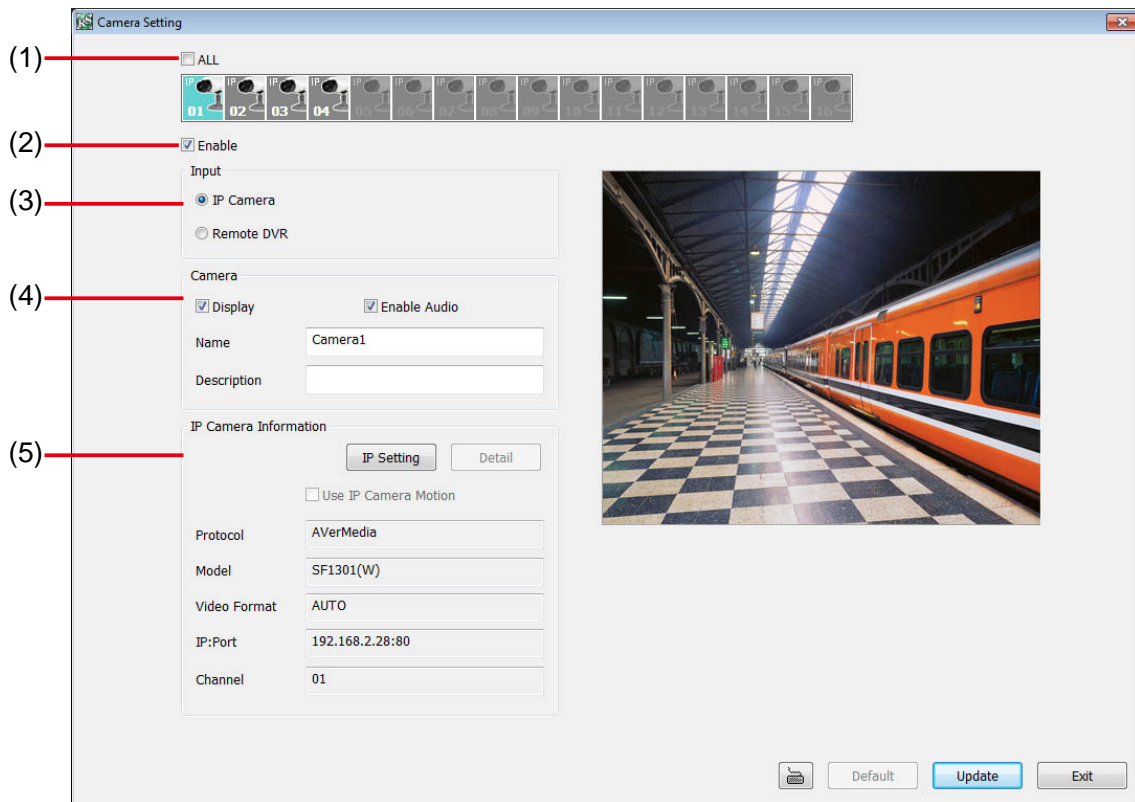
- **Auto start Network after system boot up**

Automatically connect to network when the DVR is executed.

## 7.1.1.2 Camera Setting

Select the camera from remote DVR servers to modify settings. In the Camera Setting window, click **Update** to save and apply the new settings, click **Exit** to exit without saving.

### IP Camera Setting



#### (1) Camera Icons

Select the camera number you want to adjust the video setting. To select all the cameras, enable the **ALL** check box. To select more than one camera, Right click on the camera icon. To select one camera only, Left click on the camera icon. The camera icon turns red when it is selected.

#### (2) Enable

Set to enable/disable the selected camera. When there is no video source on the camera, we suggest disabling it so that the system won't detect it as video loss error.

#### (3) Input

Select the type of camera as IP camera. To modify camera of remote DVR, see [Remote DVR Camera Setting](#).

#### (4) Camera

- **Display**

Enable/disable to show the video. Even if the video of the selected camera is hidden you can still record the video and preview it in playback mode.

- **Enable Audio**

Enable/disable audio of the camera.

- **Name**

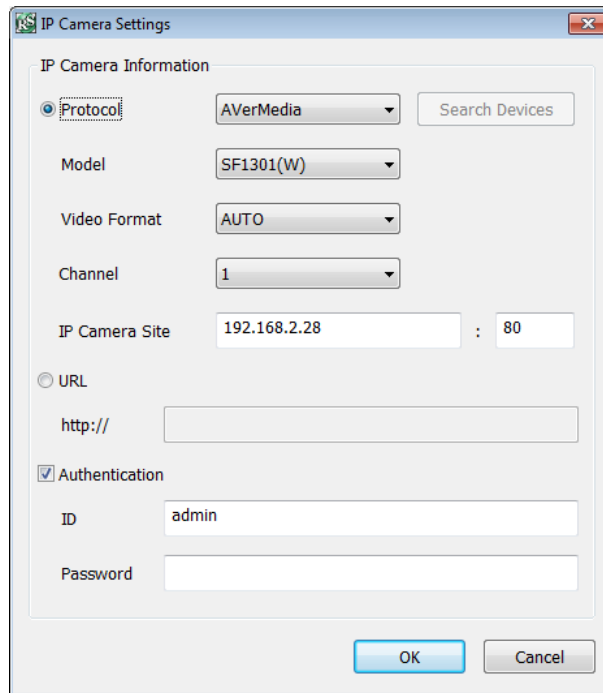
Change the camera name

- **Description**

Add a short comment

## (5) IP Camera Information

Click **IP Setting** to setup the parameters of the IP camera.



The screenshot shows a dialog box titled "IP Camera Settings". It has a tab labeled "IP Camera Information". Under this tab, there are several settings:

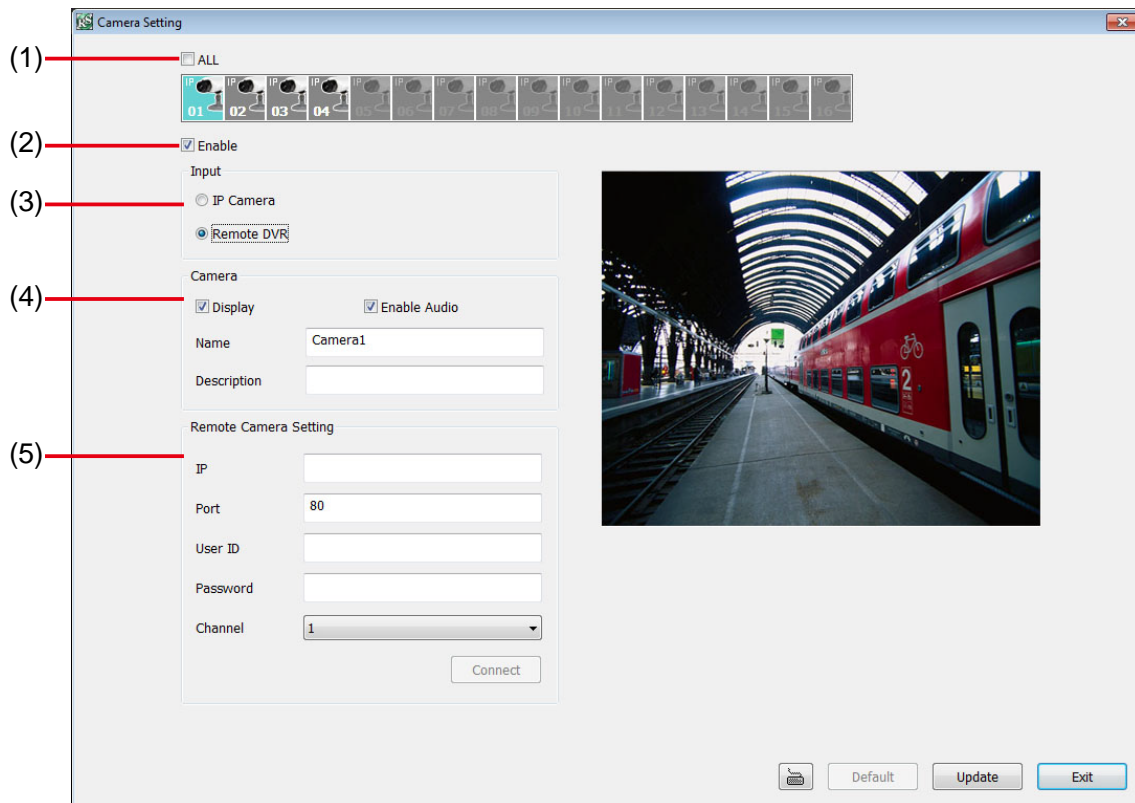
- Protocol:** A radio button is selected, and a dropdown menu shows "AVerMedia". A "Search Devices" button is to the right.
- Model:** A dropdown menu shows "SF1301(W)".
- Video Format:** A dropdown menu shows "AUTO".
- Channel:** A dropdown menu shows "1".
- IP Camera Site:** A text field contains "192.168.2.28" and a port field contains "80".
- URL:** A radio button is unselected, and a text field contains "http://".
- Authentication:** A checkbox is checked. Below it, an "ID" field contains "admin" and a "Password" field is empty.

At the bottom right, there are "OK" and "Cancel" buttons.

1. Select the **Protocol**, **Model**, **Video Format**, and **Channel** of the IP camera.
2. Enter IP address and connecting port in **IP Camera Site** column.
3. Also, user can enter URL of IP camera instead of IP address.
4. If the IP camera has authority request, please enable **Authentication** and enter **ID** and **Password**.
5. Click **OK** to connect with the IP camera.

## Remote DVR Camera Setting

Select the camera to modify settings. In the Camera Setting window, click **Update** to save and apply the new settings, click **Exit** to exit without saving.



### (1) Camera Icons

Select the camera number you want to view. To enable/disable all cameras, click **ALL** check box.

### (2) Enable

Set to enable/disable the selected camera. When there is no video source on the camera, we suggest disabling it so that the system won't detect it as video loss error.

### (3) Input

Select the camera type as **Remote DVR**. For IP camera setting, see [IP Camera Setting](#).

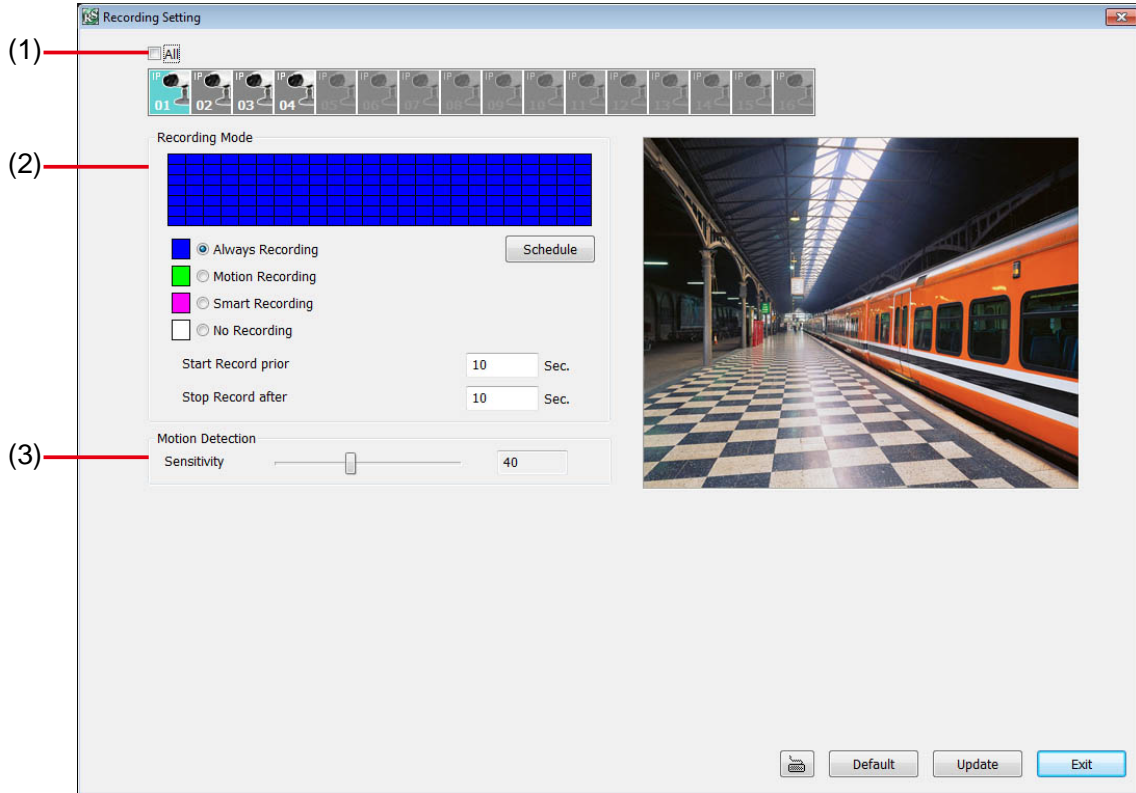
### (4) Camera

- **Display**  
Enable/disable to show the video. Even if the video of the selected camera is hidden you can still record the video and preview it in playback mode.
- **Enable Audio**  
Enable/disable audio of the camera.
- **Name**  
Change the camera name
- **Description**  
Add a short comment
- **IP**  
Enter the IP address of the camera
- **Port**  
The port for connection
- **User ID**  
Enter the user id that for connecting authority
- **Password**  
Enter the password that is for connecting authority
- **Channel**

Select the channel of connected camera

### 7.1.1.3 Record Setting

In the Recording setup window, click **OK** to accept the new settings, click **Exit** to exit without saving, and click **Default** to revert back to original factory setting.

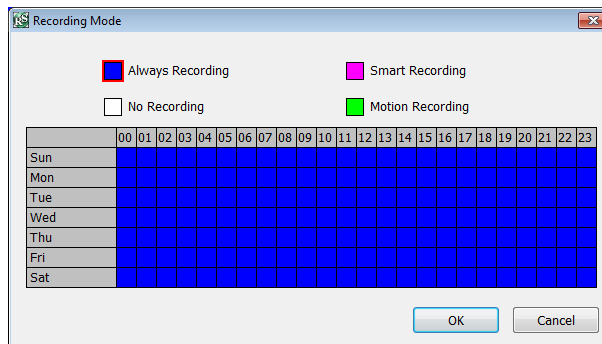


#### (1) Camera Icons

Select the camera number you want to set the recording setting. To select all the cameras, enable the **ALL** check box. To select more than one camera, **Right click** on the camera icon. To select one camera only, **Left click** on the camera icon. The camera icon turns purple when it is selected.

#### (2) Recording Mode

The horizontal blocks from 00 to 23 represent the time in 24-hour clock and the vertical block 1 to 7 represent the day in the week block (Sunday to Saturday). To record in full 24 hours and 7 days a week, select the recording mode and click the  button. If you want to only record at a particular time or day, click **Schedule** button and select the **Recording Mode**, and then click on the time or day blocks. When the system starts recording a red triangle mark would appear at the upper left corner of the screen.



The recording modes are listed below:

- **Always Recording**  
Record the video from the selected camera and save it to the designated storage path
- **Motion Recording**  
Start recording the video from the selected camera only when the system detects movement. Once a motion is detected, the system automatically saves the previous frames and stop based on the

**Start Record Prior** and **Stop Record After** settings.

- **Smart Recording**

Automatically switch to recorded at the maximum frame rate setting once a motion is detected and if there is no motion, it records at the minimum frame rate setting.

- **No Recording**

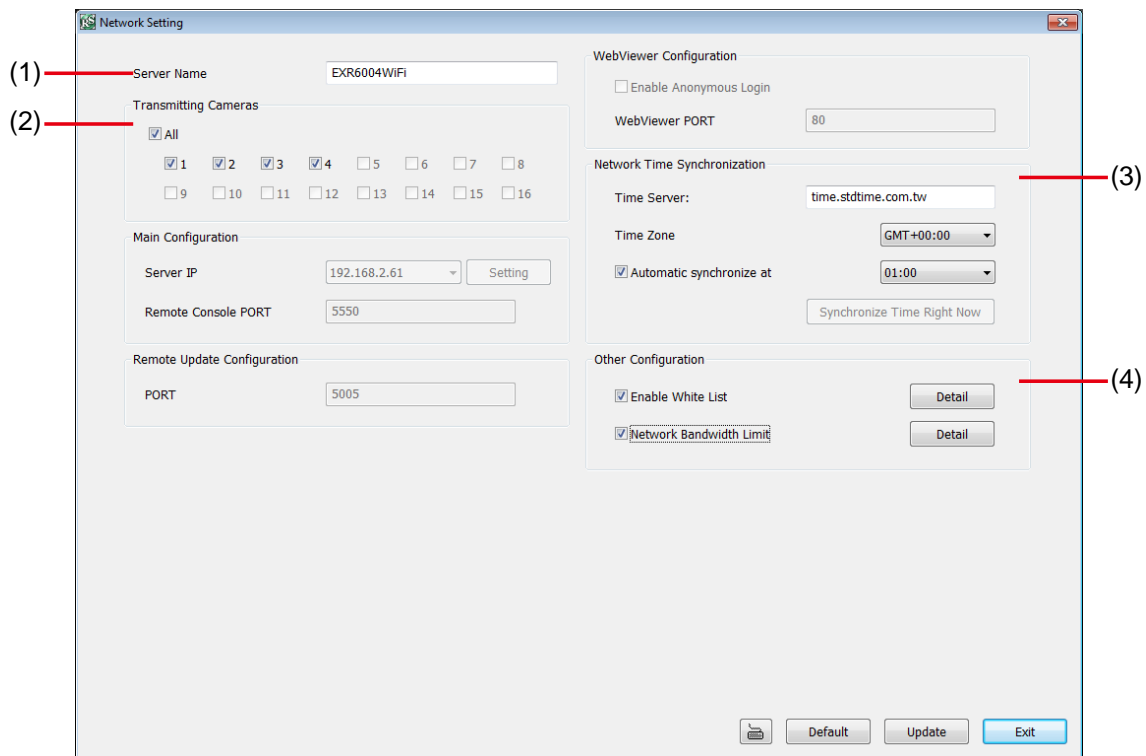
The system won't do any recording.

**(3) Motion Detection**

Adjust the sensitivity of the motion detection. The higher the value, the finer the sensitivity is detected. When it detects a motion, a green triangle mark would appear at the upper left corner of the screen.

## 7.1.1.4 Network Setting

In the Network Setting dialog box, click **Update** to accept the new settings, click **Exit** to exit without saving, and click **Default** to revert back to original factory setting. For the network service ports that use by DVR server, please see [Appendix A](#).



### (1) Server Name

Assign a name for the DVR unit. Alphabet letters and numbers only.

### (2) Transmitting Cameras

Select and click on the camera number in the Transmitting Camera section you want to make it accessible via internet using WebViewer, Remote Console, PDA Viewer and JAVAViewer (still image). To select all the cameras, enable the **ALL** check box.

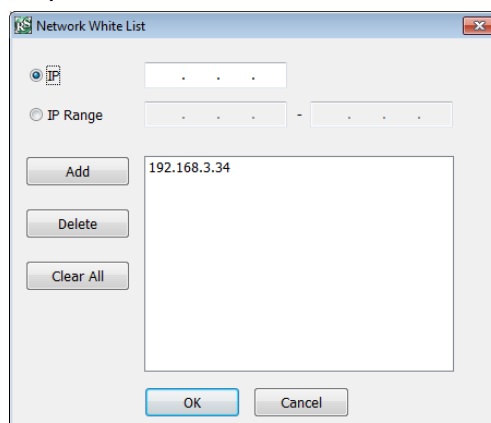
### (3) Network Time Synchronization

Adjust the DVR system time same as network time server. Fill in the **Time Server** IP address or domain name. Select the **Time Zone** that DVR is located. And then, mark the **Automatic Synchronize** time to set automatic synchronize time on a daily basis.

### (4) Other Configuration

#### - Enable White List

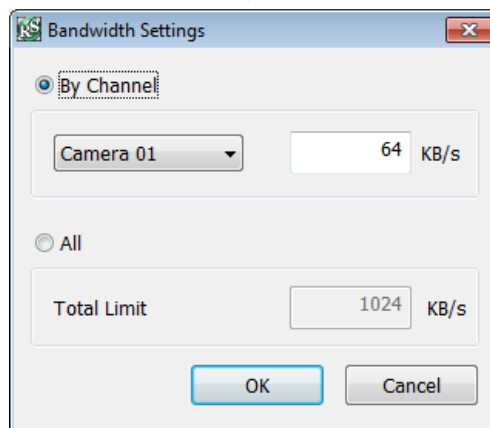
An access permit list for the remote accessing of DVR server. Enter the IP address and click **Add**. Or, enter a range of IP address and click **Add**. To delete the IP from the list, select the IP and click **Delete** button. To reset the input, click **Clear** button.



- **Network Bandwidth Limit**

**By Channel:** Set the network bandwidth by each channel.

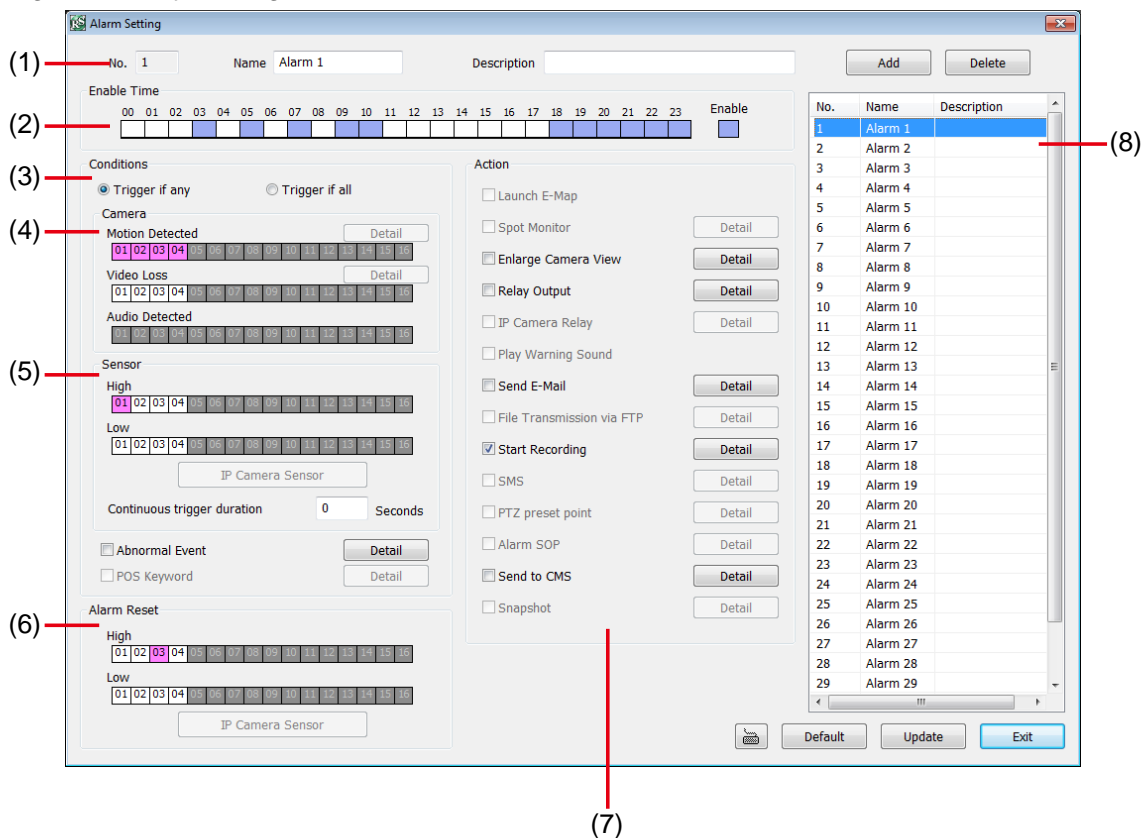
**All:** Set the total network bandwidth consumption limit.



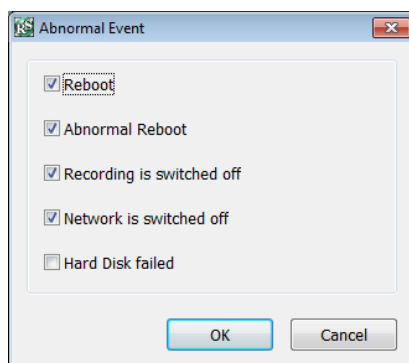


## 7.1.1.5 Alarm Setting

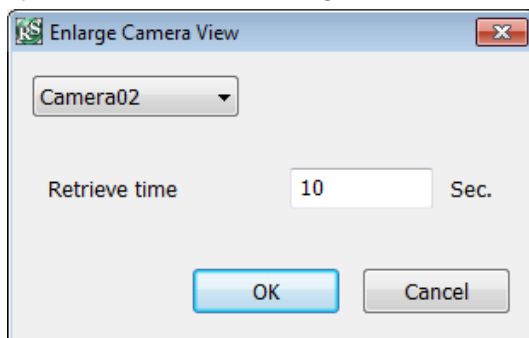
In the Alarm Setting dialog box, click **Add** to insert and set new alarm setting, click **Delete** to remove the selected alarm setting, click **Update** to save the setting, **Exit** to exit without saving, and **Default** to revert back to original factory setting.



1. Click **Add** to insert and set a new alarm setting. Click the items in the **(8) Alarm Setting List** if you want to modify the alarm setting.
2. In **(1) No./Name/Description** enter alarm name and description. Alarm **No.** will be created by DVR system.
3. In **(2) Enable Time**, the number from 00 to 23 represent the time in 24-hour clock. Select the time and click the block you want to activate or deactivate the alarm function. When it is deactivated the color of the block turns white.
4. In **(3) Conditions**, you can set “**Trigger if any**” to activate if it falls to one of the conditions or “**Trigger if all**” to activate if it falls to all conditions.
5. In **(4) Camera** section, select and click on the camera number (01 to 04) in **Motion Detected** and **Video Loss** to set the condition for the system to alarm.
6. In **(5) Sensor**, select and click on the sensor number to set the condition for the system to alarm. If the sensor normal status is high, set the sensor condition to low.
  - Enable/disable the **Abnormal Event** check box, to set the condition of the event for system to alarm.



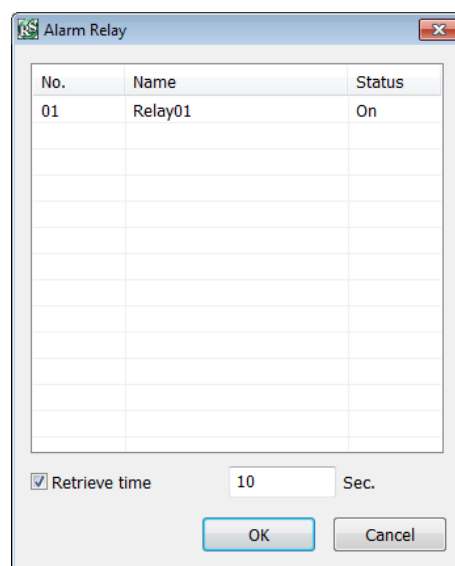
- **Reboot:** when the DVR system reboot without abnormal condition, the system will send out the alarm message.
  - **Abnormal Reboot:** when the DVR system reboot in irregular condition, the system will send out the alarm message.
  - **Recording is switched off:** when the recording has been stopped, the system will send out the alarm message.
  - **Network is switched off:** when the network connection of DVR system is lost, the system will send out the alarm message.
  - **Hard Disk failed:** when the hard disk doesn't work normally, the system will send out the alarm message.
- **Continue trigger duration:** Set a time period that when sensor has been trigger and stay in the same status for that period, then the alarm will be sent out.
7. In **(6) Alarm Reset**, click the camera number to set the reset condition of alarm. Once alarm is reset, all alarm action will stop at the moment. If the sensor normal status is high, set the alarm reset condition to low.
8. In **(7) Action**, you may now set the alarm action for the system to perform when the alarm condition is activated.
- **Enlarge Camera View**
- Switch to only display video in Preview mode from where the alarm is activated.
- a. Select the camera from drop down list to specify which camera video to be enlarged on screen when the alarm is triggered.
  - b. **Retrieve time:** set the waiting duration before system switching back to original Preview mode. If the retrieve time is un-mark, the alarm video will keep enlarging until user switch back to Preview mode manually. The retrieve time range is 0~ 600 seconds.



- **Relay Output**

Set to enable/disable the relay operation when the alarm is activated and to extend additional time in second before it stops the relay operation.

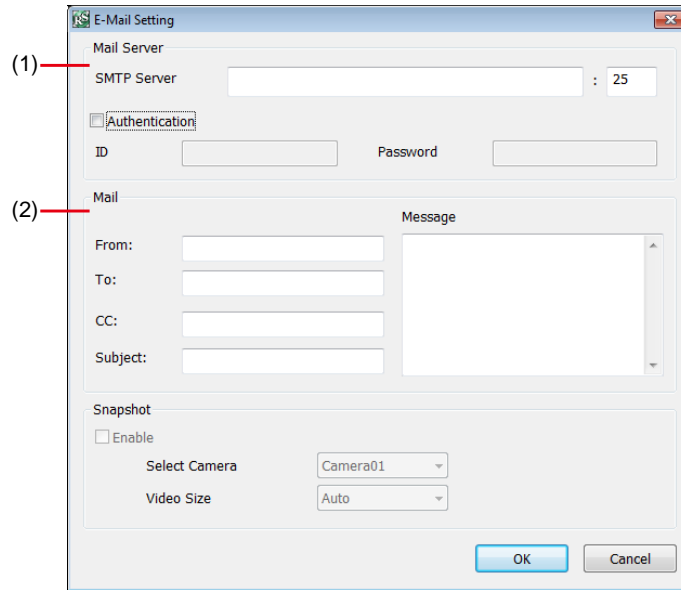
1. Beside the Relay Output check box, click **Detail**.
2. In the Alarm Relay dialog box, select from the available relay list and in the ON column, set to enable/disable the relay operation when the alarm is activated.
3. In the Retrieve time check box, you may enable/disable to extend the relay operation time and set the duration in second.
4. Click **OK** to exit and accept the setting and **Cancel** to exit without saving the setting.



- **Send E-mail**

Send an electronic text message. Beside the Send Email check box, click **Detail**.

In the E-mail Setting dialog box, click **OK** to exit and save the setting and **Cancel** to exit without saving the setting.



**(1) Mail Server**

Enter the **SMTP Server** and **port**. If your e-mail system requires user identification, enable **Authentication** check box and enter **ID** and **Password**.

**(2) Mail**

Fill the mailing information.

**From:** Enter the sender e-mail address.

**To and CC:** Enter the recipient email address and separate it with comma or a semicolon (;).

**Subject:** Enter the message title.

**Message:** Type the message.

- **Start Recording**

Record the video from the selected camera.

1. Beside the Start Recording check box, click **Detail**.

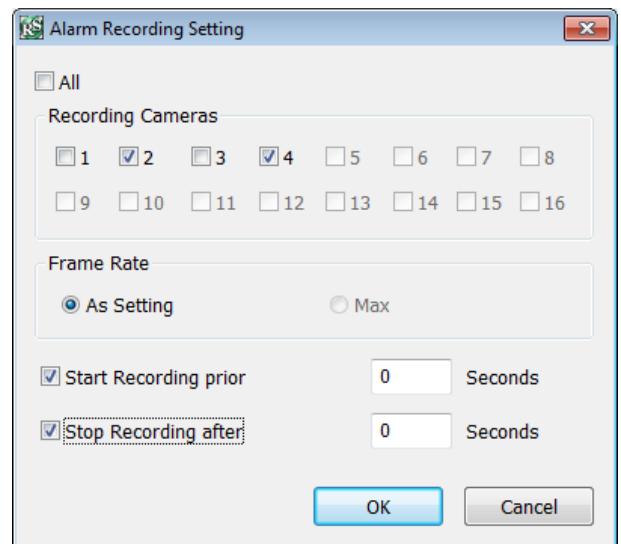
2. In the Alarm Recording Setting dialog box, select the camera to enable/disable video recording. Enable **All** to select all cameras.

3. In the Frame Rate selection, select **As Setting** to record the number of frames based on the Recording Setting.

4. In the **Start Record prior** text box, mark and set the number in second for the program to begin recording after the alarm has been trigger. The time range is 1~10 seconds.

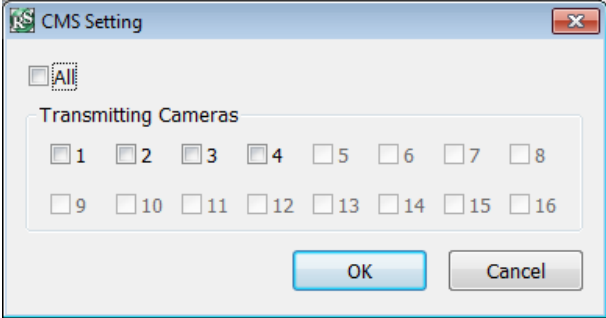
5. In the **Stop Record after** text box, mark and set the number in second for the program to continue recording after the alarm has ended. The time range is 1~999 seconds. If user doesn't mark and set the time, the alarm recording will continue recording until alarm is reset.

6. Click **OK** to accept the new settings and **Cancel** to exit without saving.

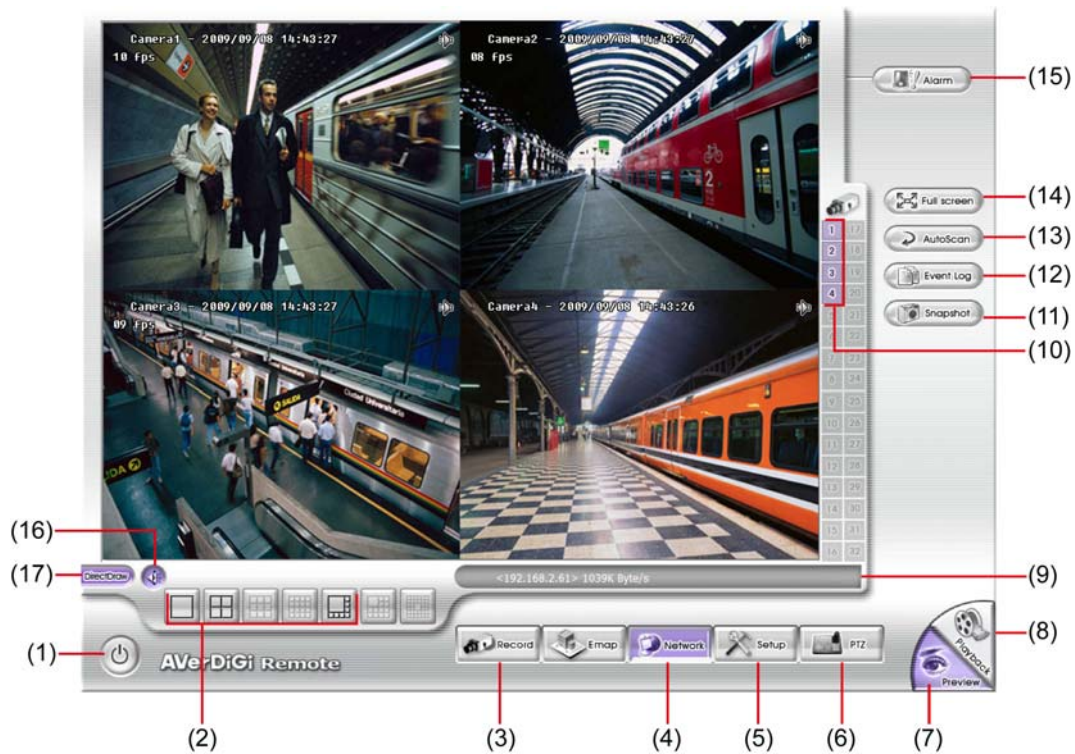


- **Send to CMS (Central Management System)**

Enable/disable the selected camera to send video to CMS when the alarm is activated. Beside the Send to CMS check box, click **Detail**. In the CMS Setting, select the camera to enable/disable sending the video to CMS. Enable **All** to select all cameras. Then, click **OK** to accept the new settings and **Cancel** to exit without saving.



## 7.2 Familiarizing the Buttons in Remote Console

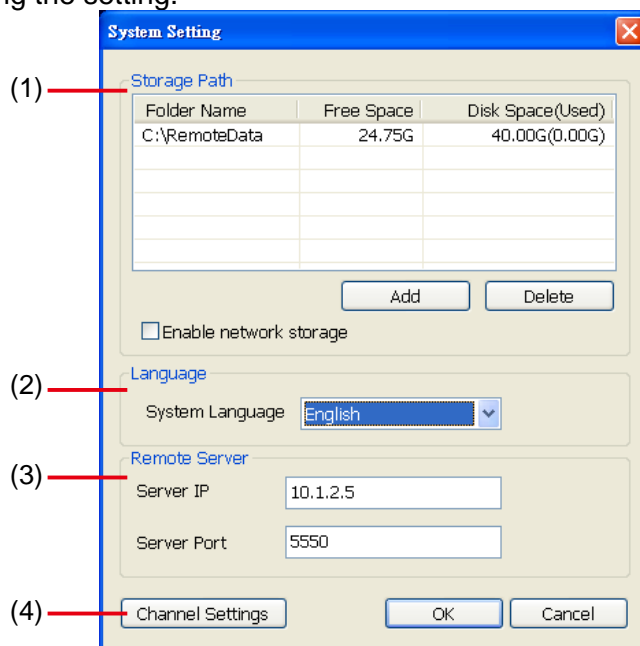


Name	Function
(1) Exit	Close the Remote Console.
(2) Split Screen Mode	Select from 3 different split screen type to playback the recorded video file of one camera, all the cameras or one camera over the other or alongside on a single screen.
(3) Record	Start/stop video recording.
(4) Network	Enable/disable remote system access. This feature allows you to access DVR server from a remote location via internet connection.
(5) Setup	Configure the Remote Console setting. (see also <a href="#">Chapter 7.2.1</a> )
(6) PTZ	Access PTZ control panel.
<p><b>i</b> The EXR6004 WiFi doesn't support PTZ function.</p>	
(7) Preview	Switch to Preview/Playback mode. This allows you to view live camera display.
(8) Playback	Switch to Playback mode. This allows you to view the recorded video file. (see also <a href="#">Chapter 7.3</a> )
(9) Status Bar	Display the current date, time and hard disk free space.
(10) Camera ID	Show the number of cameras that are being viewed. When you are in single screen mode, click the camera ID number to switch and view other camera.
(11) Event Log	Display the Event logs, Operation logs, System logs, and Network logs.
(12) Snapshot	Capture and save the screen shot either in *.jpg or *.bmp format.
(13) Auto Scan	Start/stop video screen cycle switch.
(14) Full screen	Use the entire area of the screen to only display the video. To return, Right click the mouse or press <b>ESC</b> on the keyboard.
(15) Alarm	Alert and display warning info. Superuser and user both can reset the alarm.
(16) Audio button	Enable/disable the sound.
(17) DirectDraw	Enhance the video quality.

**i** Direct Draw function supports for certain VGA card. For more information, please contact your VGA card vendor.

## 7.2.1 To Setup Remote Console Setting

Click **Setup** button to call out the **System Setting** window. Click **OK** to exit and save the setting and **Cancel** to exit without saving the setting.



### (1) Storage Path

Set the directory on where to save the data. When there is not enough free space to record one hour data, the system automatically replaces the oldest data. In case you have more than one storage path, the system automatically saves the data to the next storage path. By default the data is stored in C:\RemoteData, to insert another storage path, click **Add**. To remove the selected path, click **Delete**.

- **Enable network storage**

Select the Enable network storage check box to send the recorded video in network-attached storage.



To add network storage, the Internet storage drive/folder must be mapped as Network Driver in DVR server. To know how to assign or connect to a network drive, please refer to your Windows help file and search "Map Network drive".

### (2) Language

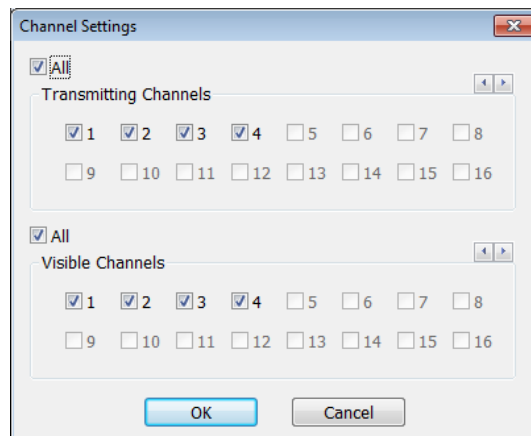
Customize the system to display the tool tips and dialogs based on the selected language. By default the language is in English.

### (3) Remote Server

Enter the DVR Server IP and Server Port number.

### (4) Channel Settings

The numbers from 1 to 4 represent the camera ID. In Transmitting Channels section, enable the camera number to receive the camera signal from the server. In Visible Channels section, enable the camera number to view the camera signal on Remote Console screen. To select all the cameras, enable the **ALL** check box.

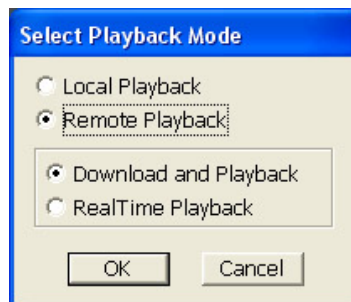


## 7.3 Using the Remote Playback

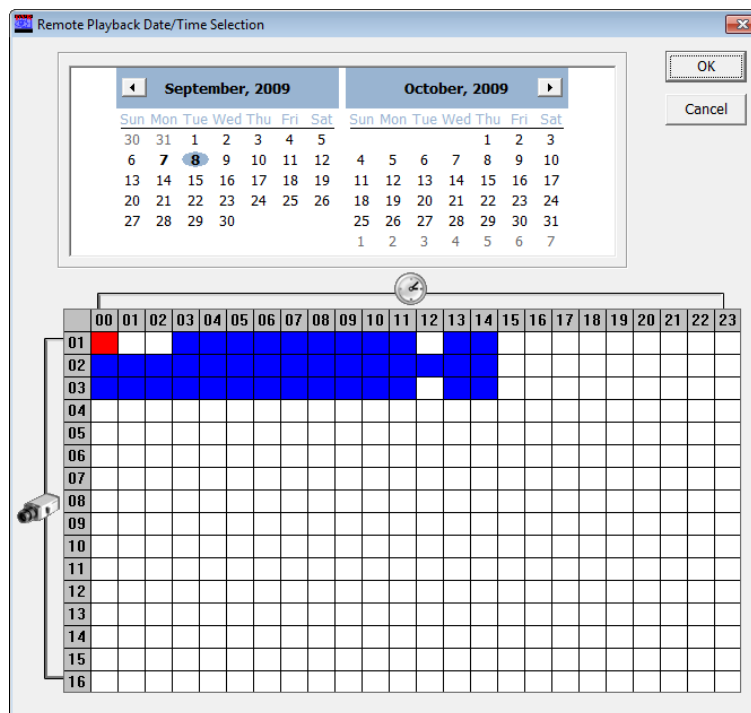
To use this feature, first you need to select the source of the file. In the Select Playback Mode dialog box, choose **Local Playback** to open the file that is recorded in the Remote Console, and **Remote Playback** to open the file that is recorded in the DVR server. When you choose Remote Playback, select **RealTime Playback** if your internet bandwidth is fast and big enough, otherwise choose **Download and Playback**.



Click **OK** to proceed and **Cancel** to void this operation.



In the Video Playback Date/Time Selection, the number from 00 to 23 represent the time in 24-hour clock. The numbers from 01 to 04 represent the camera number.



### To Make a Selection:

1. Select the date in the calendar. Use ◀ and ▶ buttons to shift the calendar to the left or right.
2. In the table below, click on the blue block to select and open the recorded file. The blue block turns red when it is selected. The block that appears in white doesn't have data. You can only select one block when you choose Download and Playback.
3. Click **OK** to proceed and **Cancel** to void this operation.
4. If you select Download Playback and after making the selection, the system divides the selected hour into 16 video thumbnails. In the Time Selection screen, click on the video thumbnail you want to download (see also [Chapter 5.4.3](#)).



### 7.3.1 Familiarizing the Buttons in Local Playback



Name	Function
(1) Split Screen Mode	Select from 6 different split screen type to playback the recorded video file of all the camera, or one camera over the other or alongside on a single screen.
<b>i</b>	<ul style="list-style-type: none"> <li>- If there are only 4 cameras, you won't be able to switch to 8, 16, and 13 split screen mode.</li> <li>- To zoom in an area on the screen, Right click and Drag a square on the area you want to enlarge. To back to normal view, right click the channel screen again.</li> </ul>
(2) Exit	To close the application
(3) Progress bar	Show the progress of the file being played. You may move the bar to seek at any location of the track.
(4) Hour Buttons	Select and click to playback the recorded video file on the specific time frame.
<b>i</b>	The Hour buttons represent the time in 24-hour clock. The blue bar on top of the hour button indicates that there is a recorded video file on that period of time. If there is no recorded data within the hour, there will be no color bar on top of the hour button. While the red bar indicates that you are currently viewing the recorded video file.



Name	Function
(5) Playback Control Buttons	<p> <b>Begin:</b> Move at the beginning of the recorded video file.</p> <p> <b>Previous:</b> Go back to the previous frame.</p> <p> <b>Slower:</b> Play the recorded video file at the speed of 1/2x, 1/4x, or 1/8x.</p> <p> <b>Rewind:</b> Wind back the recorded video file.</p> <p> <b>Pause:</b> Briefly stop playing the recorded video file.</p> <p> <b>Play:</b> Play the recorded video file.</p> <p> <b>Faster:</b> Play the recorded video file at the speed of 2x, 4x, or 8x, 16x or 32x.</p> <p> <b>Next:</b> Go to the next frame.</p> <p> <b>End:</b> Go to the end of the recorded video file.</p>
(6) Archive	<p>Select the date on the calendar and the time from 00 to 23 to where to start playing the recorded video file.</p> <ul style="list-style-type: none"> <li>– <b>OPEN FILE:</b> Click to open the recorded file from certain location.</li> <li>– <b>Channel 01~ 16 &amp; Channel 17 ~ 32:</b> Click to switch to different channel group of playback calendar if the DVR supports more than 16 channels.</li> <li>– Mark <b>Day Light Saving</b>, the playback calendar will show the available playback records during day light saving period.</li> </ul>
	<p>The numbers from 00 to 23 represent the time in 24-hour clock. The numbers from 01 to 04 represent the camera ID. While the red colored column indicates on where to start playing the recorded video file. If there is no any video data, it will be no color bar on top of the date button.</p>
(7) Preview	Switch to Preview mode.
(8) Playback	Switch to Playback mode. This allows you to view the recorded video file.
(9) Status bar	Display the record date, time, HDD capacity in preview mode and play speed in playback mode.
(10) Camera ID	Show the number of cameras that are being viewed. When you are in single screen mode, click the camera ID number to switch and view other camera.
(11) Export	<p>Export includes Snapshot, Print, and Output Video Clip function.</p> <ul style="list-style-type: none"> <li>■ <b>Snapshot:</b> Capture and save the screen shot either in *.jpg format.</li> <li>■ <b>Print:</b> Print the screen shot.</li> <li>■ <b>Output Video Clip:</b> Save the segmented file in *.dvr format (see also <a href="#">Chapter 7.3.1.1</a>).</li> </ul>
(12) Segment	Keep a portion of the recorded video you want (see also <a href="#">Chapter 7.3.1.1</a> ).
(13) Full screen	View in Playback-compact mode. To return, press the right button of the mouse or

Name	Function
	ESC on the keyboard.
(14) Event Log	Show the record of activities that take place in the system
(15) Visual Search	Search from a specific camera by Date, Hour, Minute, 10 Seconds and Second(see also <a href="#">Chapter 7.3.1.2</a> )
(16) Find Next	Search for the next event. You can use this when you are using Event Search function.
(17) Intelligent Search	Search the changes in the motion detector frame (See also <a href="#">Chapter 3.7.4</a> ).
(18) Audio	Enable/disable volume
(19) De-interlace	To enhance the video quality. Set the de-interlace mode to #1, if you are capturing motionless picture and #2, if it captures lots of movement.

### 7.3.1.1 To Cut and Save the Wanted Portion of the Recorded Video

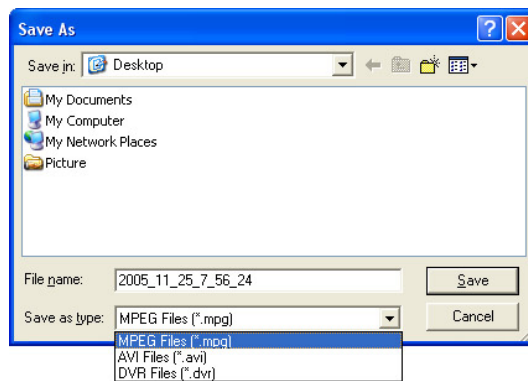
1. Use the Playback Control buttons or drag the bar on the playback progress bar and pause on where you want to start the cut. Then, click Segment to set the begin mark.



2. Use the Playback Control buttons or drag the bar on the playback progress bar and pause on where you want to end the cut. Then, click Segment to set the end mark. To cancel segmentation or set the segment marks from the start, click Segment button again.

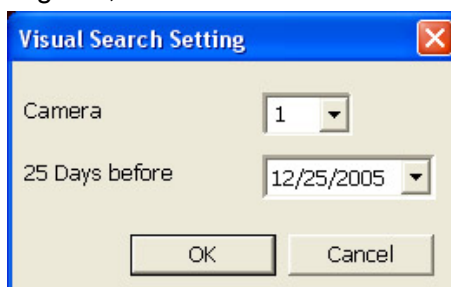


3. Click **Output** button to save the wanted clip.
4. In the Save As dialog box, locate on where you want to save the file, type the filename, and select the video format.



### 7.3.1.2 To Search Using the Visual Search

1. Click **Visual Search**.
2. In the Visual Search Setting dialog box, select the Camera number and the date. Then click **OK**.



3. When a series of frames appear by date, click on the frame to display another series of frames and search by every Hour of that date, every 3Minutes of that hour, every 10 Seconds of that minute, every Second of that 10 seconds. To go back, click . To view from the selected frame and close event search, click .

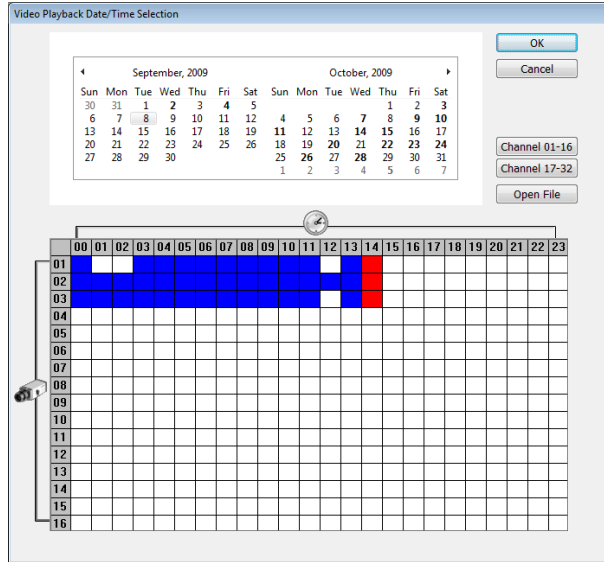
## 7.3.2 Familiarizing the Buttons in RealTime Playback



Name	Function
(1) Split Screen Mode	Select from 6 different split screen type to playback the recorded video file of the entire camera, or one camera.
<b>i</b>	<ul style="list-style-type: none"> <li>- If there are only 4 cameras, you won't be able to switch to 8, 13, and 16 split screen mode.</li> <li>- To zoom in an area on the screen, <b>Right click</b> and <b>Drag</b> a square on the area you want to enlarge.</li> </ul>
(2) Exit	To close the application
(3) Progress bar	Show the progress of the file being played. You may move the bar to seek at any location of the track.
(4) Hour Buttons	Select and click to playback the recorded video file on the specific time frame.
<b>i</b>	The Hour buttons represent the time in 24-hour clock. The blue bar on top of the hour button indicates that there is a recorded video file on that period of time. While the red bar indicates that you are currently viewing the recorded video file.
(5) Playback Control Buttons	<ul style="list-style-type: none"> <li><b>⏪ Begin:</b> Move at the beginning of the recorded video file.</li> <li><b>⏮ Previous:</b> Go back to the previous frame.</li> <li><b>⏴ Slower:</b> Play the recorded video file at the speed of 1/2x, 1/4x, or 1/8x.</li> <li><b>⏮ Rewind:</b> Wind back the recorded video file.</li> <li><b>⏸ Pause:</b> Briefly stop playing the recorded video file.</li> <li><b>▶ Play:</b> Play the recorded video file.</li> <li><b>⏴ Faster:</b> Play the recorded video file at the speed of 2x, 4x, or 8x, 16x or 32x.</li> <li><b>▶ Next:</b> Go to the next frame.</li> <li><b>⏭ End:</b> Go to the end of the recorded video file.</li> </ul>

Name	Function
------	----------

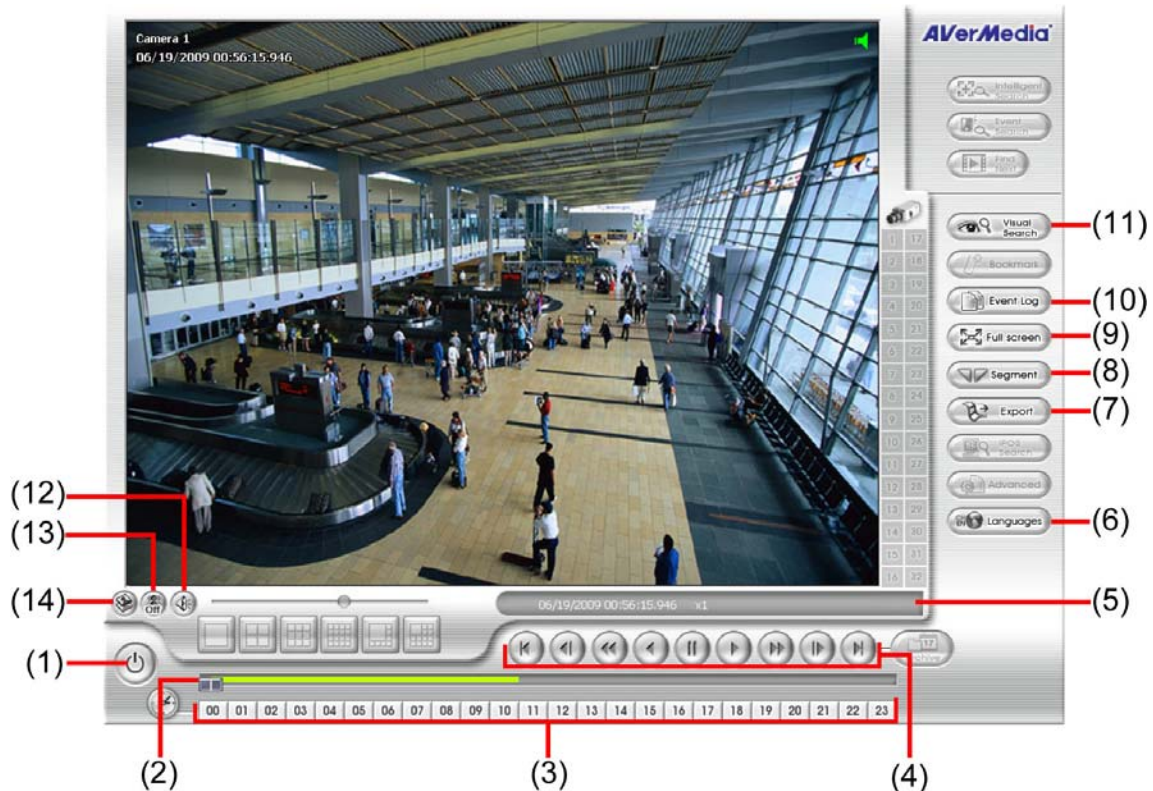
- (6) Archive
- Select the date on the calendar and the time from 00 to 23 to where to start playing the recorded video file.
- **OPEN FILE:** Click to open the recorded file from certain location.
  - **Channel 01~ 16 & Channel 17 ~ 32:** Click to switch to different channel group of playback calendar if the DVR supports more than 16 channels.
  - Mark **Day Light Saving**, the playback calendar will show the available playback records during day light saving period.




**i** The numbers from 00 to 23 represent the time in 24-hour clock. The numbers from 01 to 04 represent the camera ID. The blue colored column indicates that there is a recorded video file on that period of time. While the red colored column indicates on where to start playing the recorded video file.

(7) Preview	Switch to Preview/Advanced mode.
(8) Playback	Switch to Playback mode. This allows you to view the recorded video file.
(9) Status bar	Display the recorded date, time and play speed.
(10) Camera ID	Show the number of cameras that are being viewed. When you are in single screen mode, click the camera ID number to switch and view other camera.
(11) Export	<b>Snapshot:</b> Capture and save the screen shot either in *.jpg or *.bmp format.
(12) Full screen	View in Playback-compact mode. To return, press the right button of the mouse or <b>ESC</b> on the keyboard. When you switch to full screen in multiple-screen mode, <b>Left</b> click to toggle to only display one of the video in the multiple-screen mode or all.
(13) Event Log	Show the record of activities that take place in the system
(14) Audio	Enable/disable volume
(15) De-interlace	To enhance the video quality. Set the de-interlace mode to #1, if you are capturing motionless picture and #2, if it captures lots of movement.

## 7.3.3 Familiarizing the Buttons in Download and Playback



Name	Function
(1) Exit	To close the application.
(2) Progress bar	Show the progress of the file being played. You may move the bar to seek at any location of the track.
(3) Hour Buttons	Select and click to playback the recorded video file on the specific time frame.
<b>i</b>	The Hour buttons represent the time in 24-hour clock. The blue bar on top of the hour button indicates that there is a recorded video file on that period of time. While the red bar indicates that you are currently viewing the recorded video file.
(4) Playback Control Buttons	<p><b>Begin:</b> Move at the beginning of the recorded video file.</p> <p><b>Previous:</b> Go back to the previous frame.</p> <p><b>Slower:</b> Play the recorded video file at the speed of 1/2x, 1/4x, or 1/8x.</p> <p><b>Rewind:</b> Wind back the recorded video file.</p> <p><b>Pause:</b> Briefly stop playing the recorded video file.</p> <p><b>Play:</b> Play the recorded video file.</p> <p><b>Faster:</b> Play the recorded video file at the speed of 2x, 4x, or 8x, 16x or 32x.</p> <p><b>Next:</b> Go to the next frame.</p> <p><b>End:</b> Go to the end of the recorded video file.</p>
(5) Status bar	Display the recorded date, time and play speed.
(6) Language	Customize the system to display the tool tips and dialogs based on the selected language. By default the language is in English.
(7) Export	Export includes Snapshot, Print, and Output Video Clip function. <ul style="list-style-type: none"> <li>■ <b>Snapshot:</b> Capture and save the screen shot either in *.jpg or *.bmp format.</li> <li>■ <b>Print:</b> Print the screen shot.</li> <li>■ <b>Output Video Clip:</b> Save the segmented file in *.mpg, *.avi, or *.dvr format (see also <a href="#">Chapter 7.3.1.1</a>).</li> </ul>
(8) Segment	Keep a portion of the recorded video you want (see also <a href="#">Chapter 7.3.1.1</a> ).
(9) Full screen	View in Playback-compact mode. To return, press the right button of the mouse or <b>ESC</b> on the keyboard. When you switch to full screen in multiple-screen mode, <b>Left</b> click to toggle to only display one of the video in the multiple-screen mode or all.
(10) Event Log	Show the record of activities that take place in the system

Name	Function
(11) Visual Search	Search from a specific camera by Date, Hour, Minute, 10 Seconds and Second. (See also <a href="#">Chapter 7.3.1.2</a> )
(12) Audio	Enable/disable volume
(13) De-interlace	To enhance the video quality. Set the de-interlace mode to #1, if you are capturing motionless picture and #2, if it captures lots of movement.
(14) Watermark	To verify the playback video has not been modified To verify the playback video doesn't been modified. Click  to check the video. Watermark verification window will show up as following:



# Chapter 8 Using HandyViewer to Access DVR Server

Users can use a mobile phone to access the DVR through Internet. Make sure your mobile phone support IE browser and is connected to the internet. To access the DVR server, open IE browser and enter **http://enter server IP or domain name here/mobile**. You can see the latest screen shot. Click << >> to change the channel or camera and **Refresh** to reload new screen shot.

## 8.1 Using PDAViewer to Access DVR Server

Users can also use a PDA to access the DVR through Internet. Make sure your PDA support IE browser and is connected to the internet. To use this feature, you need to install the PDA Viewer software either thru ActiveSync connection or download it from the internet. Please check if your PDA meets the 2 requirements below.

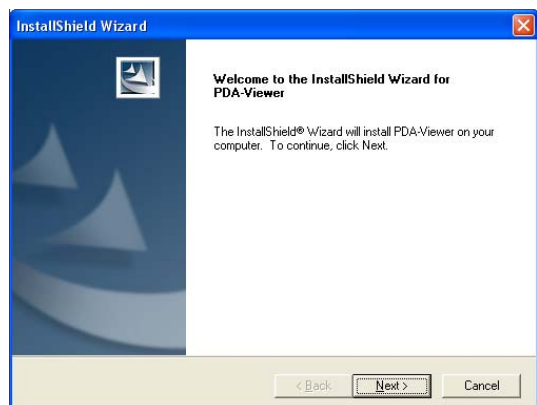
**OS: MS Windows CE 4.0, PocketPC 2002/2003, Mobile 5 PDA version**  
**CPU: ARM architecture**

### 8.1.1 To install PDAViewer thru ActiveSync

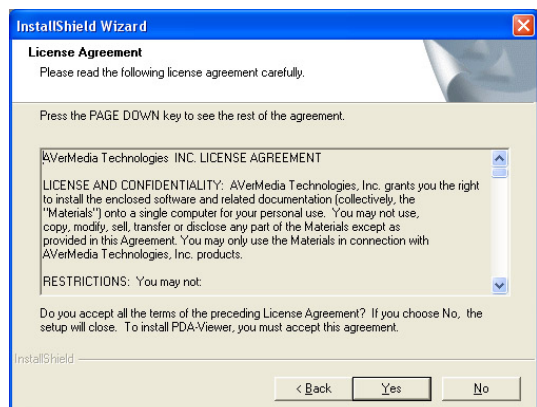
1. Connect your PDA to your PC. Place the CD into the CD-ROM drive then click Install PDAViewer. And follow the on screen instructions.



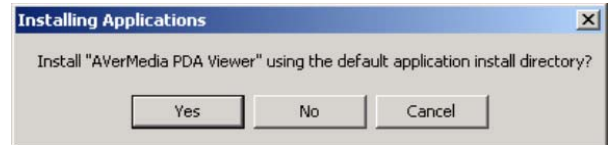
2. Click **Next** to continue.



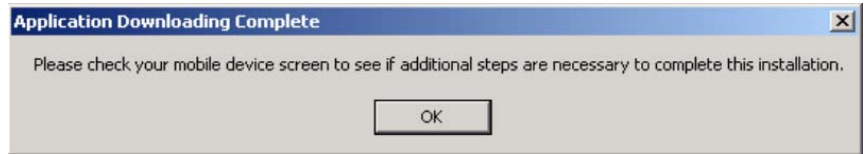
3. Read the license agreement and click **Yes** to accept all the terms. The system will then automatically install the application.



- When you are prompted, click **Yes** to install the application using the default directory.



- When done, click **OK**.



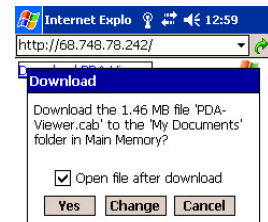
## 8.1.2 To install PDAViewer from the Internet

Make sure you are connected to the internet.

- Open the web browser and enter the server IP. Then click the hyperlink **Download PDAViewer**.



- When the Download dialog box appears, enable **Open file after download** and click **Yes**.



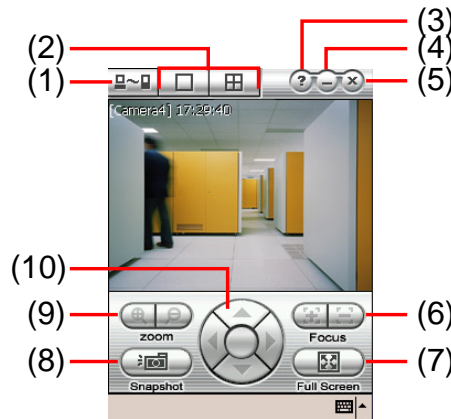
- After the installation, the PDAViewer icon will appear in the Programs list.





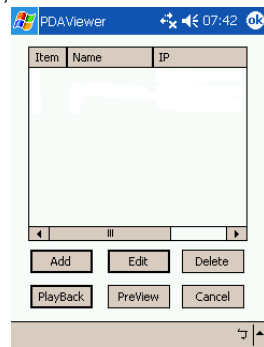
### 8.1.3 To Use the PDAViewer

1. Run the **PDAViewer** in the Programs.
2. Familiarizing the PDAViewer buttons.

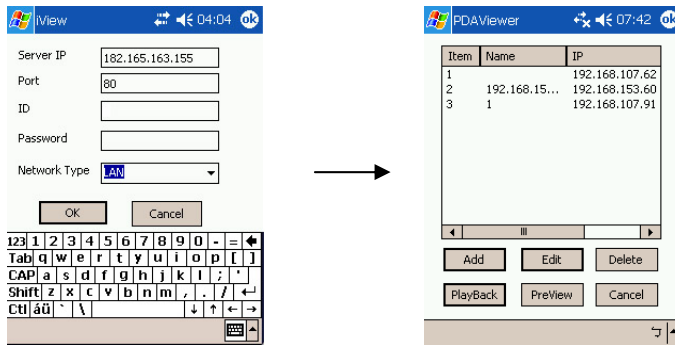


Name	Function
------	----------

(1) Connect Hook up to the DVR server. Make sure you are connected to internet. When the iView screen appears, click Add to add DVR server.



Enter the server IP, port, user ID, password and select the connection type. Then, click **OK**.



User can playback the recorded video from remote DVR server in PDAViewer.(see also [Chapter 8.1.4](#))

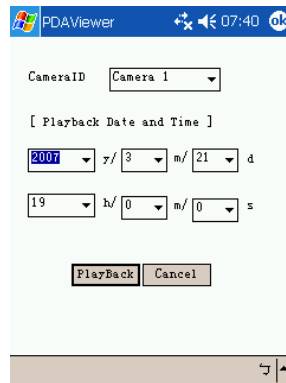
(2) Split Screen Mode	Select between 2 screen display types. It also allows you to switch and view different camera number or channels.
(3) About	Display the PDAViewer software version.
(4) Minimize	Reduce the size to taskbar.
(5) Exit	Close the PDAViewer.
(6) Focus	Adjust the focus of PTZ camera to produce clear image.
(7) Full Screen	Use the entire screen to only display the video.
(8) Snapshot	Capture and save the screen shot in *.bmp format.
(9) Zoom	Zoom in and out the PTZ camera image.
(10) Direction buttons	Adjust and position the focal point of the PTZ camera.

- To change the video quality, enable/disable audio, and select to display different camera, tap on the video screen longer the popup menu will appear.



### 8.1.4 To Playback in PDAViewer

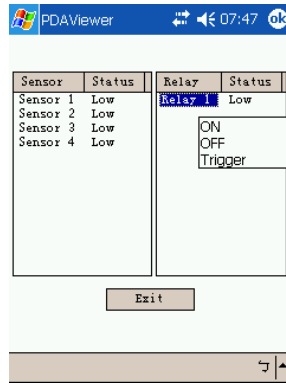
- Run the **PDAViewer** in the Programs.
- Hook up to the DVR server.
- Click **Connect** icon and select the DVR server
- Click **Playback** to enter playback option screen
- Select the **camera, data, and time**
- Click **Playback** to start playing the recorded video



- While playback, user can view and change status of I/O devices
- On the playback screen, tap on video screen longer the pop up menu will appear
- Select the **Remote IO**



- The sensor and relay devices will list as below:



11. User can change the relay status. Select the relay and tap on video screen longer the pop up menu will appear, and then, select the status (ON, OFF, Tigger)

## 8.2 Using JAVAViewer to Access DVR Server

Using the mobile phone within Symbian Smart Phone OS to access the DVR through Internet. Make sure your mobile phone supports Symbian Smart Phone OS and can be connected to the internet. To use this feature, you need to install the JAVA Viewer program that it can be downloading it from the DVR server through the internet.

### 8.2.1 To install JAVAViewer from the DVR Server

1. Open the web browser and enter the DVR server IP (<http://DVR server IP: port/JAVA-Viewer.html>). Then click **Connect**.
2. When the Download screen appears, select **JAVA-Viewer.jad** and download it to your mobile phone.
3. After the installation, the JAVAViewer will be in your mobile phone system. To find the JAVAViewer program where is located, please refer to your mobile phone user's manual.

## 8.2.2 To Use the JAVAViewer

1. Run the JAVAViewer program.
2. Enter the DVR IP address, port number, user ID, and password. Please refer to your DVR server setting for that information.
3. And then, select the Connect to connect to DVR server.
4. Click **Yes** to accept the data from DVR server.
5. When connection is success, you will see the camera video on the screen.
6. To switch to different camera view, select menu and select the channel.
7. The JAVAViewer support PTZ control function, you can refer to **Help** file for detail function control key. Select **menu** and go the way down to select the **Help** file.



# Chapter 9 Web Tools

The bundled Web Tools includes Dispatch Server , Remote Backup, and Remote Setup program. To install Web Tools, place the CD into the CD-ROM drive then click **Install Web Tools**.

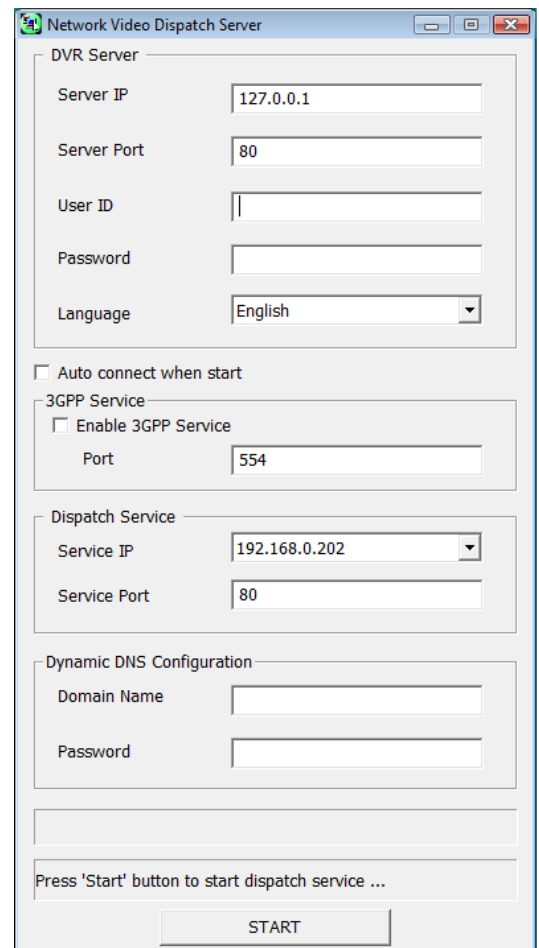


## 9.1 Dispatch Server

Dispatch is designed to reduce the network traffic of the DVR server. Instead of connecting directly to the DVR server, the client can connect to the computer that is connected to the DVR server using the Dispatch program.

### 9.1.1 To Run Dispatch program:

1. Make sure you are connected to the internet.
2. Click **Start>Programs>Web Tool>Dispatch**.
3. In the DVR Server section, enter the DVR server IP, port, user ID and password. You can also select to display the language you prefer.
4. **Auto connect when start:** Enable to automatically connect the dispatch server when start up
5. **3GPP Service**
6. Enable to allow user using 3GPP service to receive video stream from Dispatch server. The **Service Port** must same as RTSP port of 3GPP on DVR server.
7. In the **Dispatch Service** section, if you have installed more than one network card, select the Service IP number.
8. In the **Dynamic DNS Configuration** section, enter the DNS server Name and Password. The DNS server can be the remote storage server for sharing the DVR system loading.
9. Click **START** to connect.



DVR Server	
Server IP	127.0.0.1
Server Port	80
User ID	
Password	
Language	English

Auto connect when start

3GPP Service	
<input type="checkbox"/> Enable 3GPP Service	
Port	554


Dispatch Service	
Service IP	192.168.0.202
Service Port	80

Dynamic DNS Configuration	
Domain Name	
Password	

Press 'Start' button to start dispatch service ...

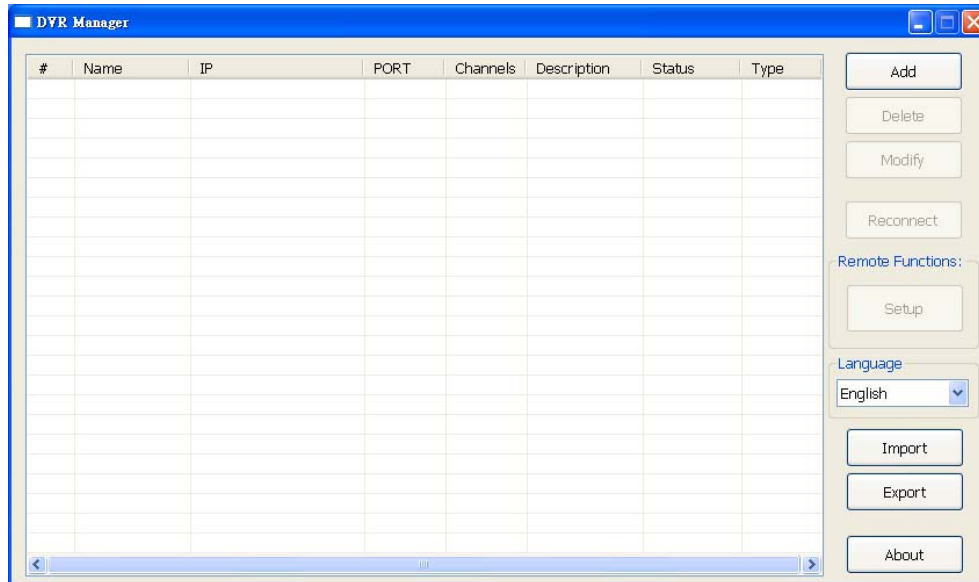
**START**

## 9.2 Remote Setup

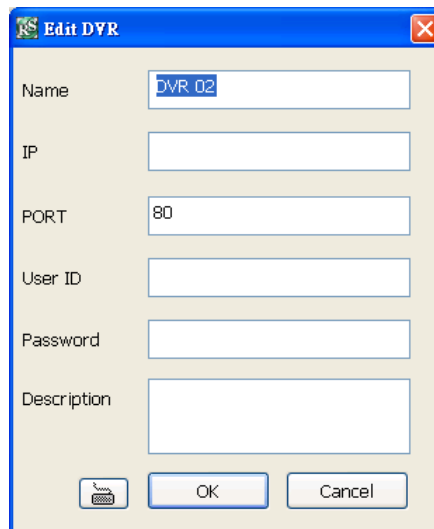
Remote Setup is a tool for configuring DVR server from remote site. To install Remote Setup application, insert the Installation CD into CD-ROM drive and click **Web Tools**. After installation, click  to start the Remote Setup application.

### 9.2.1 To Add DVR server

User need to add a DVR server and make connection in order to setup remote DVR server.



1. Click **Add**
2. In Edit DVR window, fill in the following items:
  - **Name:** give a name for remote DVR server for easy managing
  - **IP:** fill in remote DVR server's IP address
  - **Port:** the port use to connect to remote DVR server. The port number is same the Webviewer port on the remote DVR server. The default is 80.
  - **User ID:** fill in the remote DVR server's login account
  - **Password:** fill in the remote DVR server's login password
  - **Description:** fill in a short description for the remote DVR server



3. Click **OK** to complete adding remote DVR server.
4. The added DVR server will be listed and auto connects to DVR server.
5. Once the connecting is success, user can start to configure DVR server.

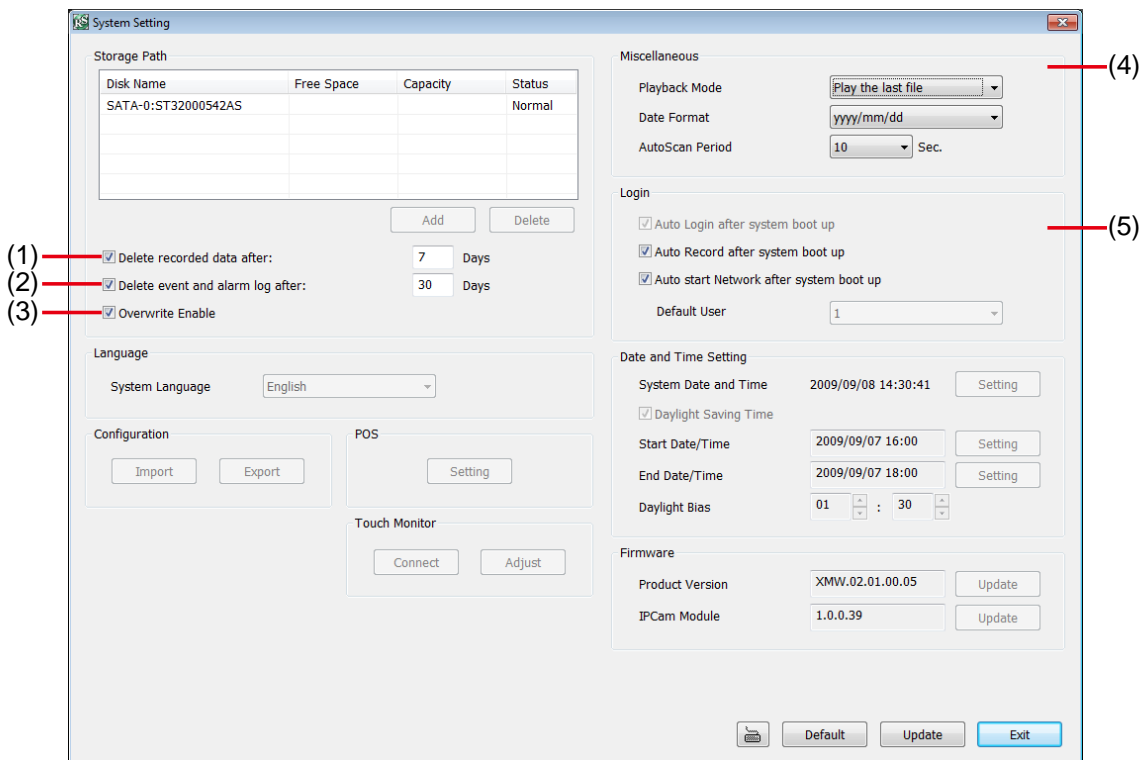
6. When connection is lost, click **Reconnect** to connect again.
7. To modify or delete the added DVR server, select the DVR server from listing and click **Modify** to change the setting and click **Delete** to remove the DVR server.
8. User also can import the setting by clicking **Import** button. To save the setting to local hard disk, click **Export** button.

## 9.2.2 To Setup Remote System Setting

The setting here applies to Remote DVR only.

### 9.2.2.1 System Setting

In the System Setting window, click **Update** to accept the new settings, click **Exit** to exit without saving, and click **Default** to revert back to original factory setting.



#### (1) Delete recorded data after

If you want the system to automatically erase the data after a certain days, enable the **Delete recorded data after** check box and enter the numbers of days in **Days** text box.

#### (2) Delete event and alarm log after

If you want the system to automatically erase the event and alarm log files after a certain days, enable the **Delete event and alarm log after** check box and enter the numbers of days in **Days** text box.

#### (3) Overwrite Enable

When there is not enough free space to record one hour data, the system automatically replaces the oldest data.

#### (4) Miscellaneous

Enable the conditions in **Miscellaneous** section you want the system to perform.

##### - Playback Mode

Select the mode of playback the video.

**Select date and time:** Select the date and time which user wants to playback.

**Play the last file:** Automatically playback the video from the last hour

**Instant Playback:** Automatically playback the video which has just recorded

##### - Date Format

Select the date format which wants to display in **Select date and time** playback mode

### - Auto Scan Period

Set the time gap of the Auto Scan function from 3 to 10 seconds. This automatically switches to the next video in cycle depending on the set time gap.

### (5) Login

Enable the conditions in Login section you want the system to automatically carry out.

#### - Auto Record after system boot up

Automatically start video recording when the DVR is executed.

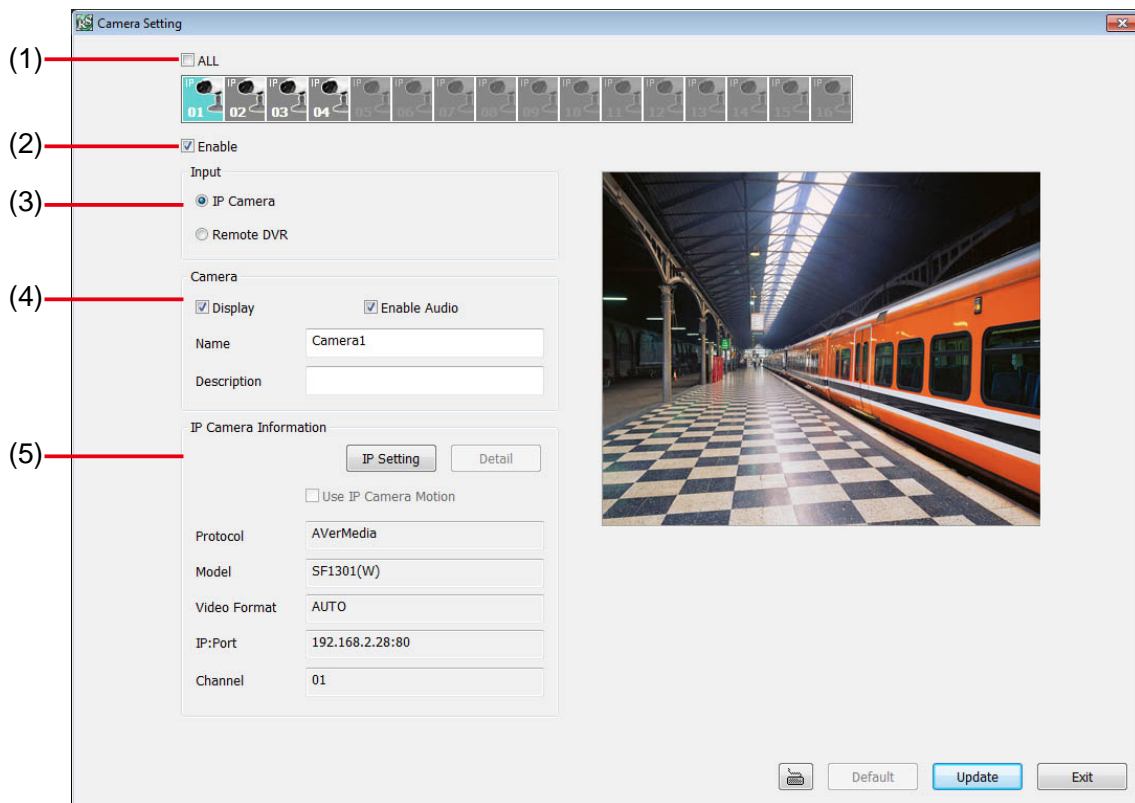
#### - Auto start Network after system boot up

Automatically connect to network when the DVR is executed.

## 9.2.2.2 Camera Setting

Select the camera from remote DVR servers to modify settings. In the Camera Setting window, click **Update** to save and apply the new settings, click **Exit** to exit without saving.

### IP Camera Setting



### (1) Camera Icons

Select the camera number you want to adjust the video setting. To select all the cameras, enable the **ALL** check box. To select more than one camera, Right click on the camera icon. To select one camera only, Left click on the camera icon. The camera icon turns red when it is selected.

### (2) Enable

Set to enable/disable the selected camera. When there is no video source on the camera, we suggest disabling it so that the system won't detect it as video loss error.

### (3) Input

Select the type of camera as IP camera. To modify camera of remote DVR, see [Remote DVR Camera Setting](#).

### (4) Camera

#### - Display

Enable/disable to show the video. Even if the video of the selected camera is hidden you can still record the video and preview it in playback mode.

#### - Enable Audio



Enable/disable audio of the camera.

- **Name**

Change the camera name

- **Description**

Add a short comment

### (5) IP Camera Information

Click **IP Setting** to setup the parameters of the IP camera.

The screenshot shows a window titled "IP Camera Settings". It is divided into two main sections: "IP Camera Information" and "Authentication".

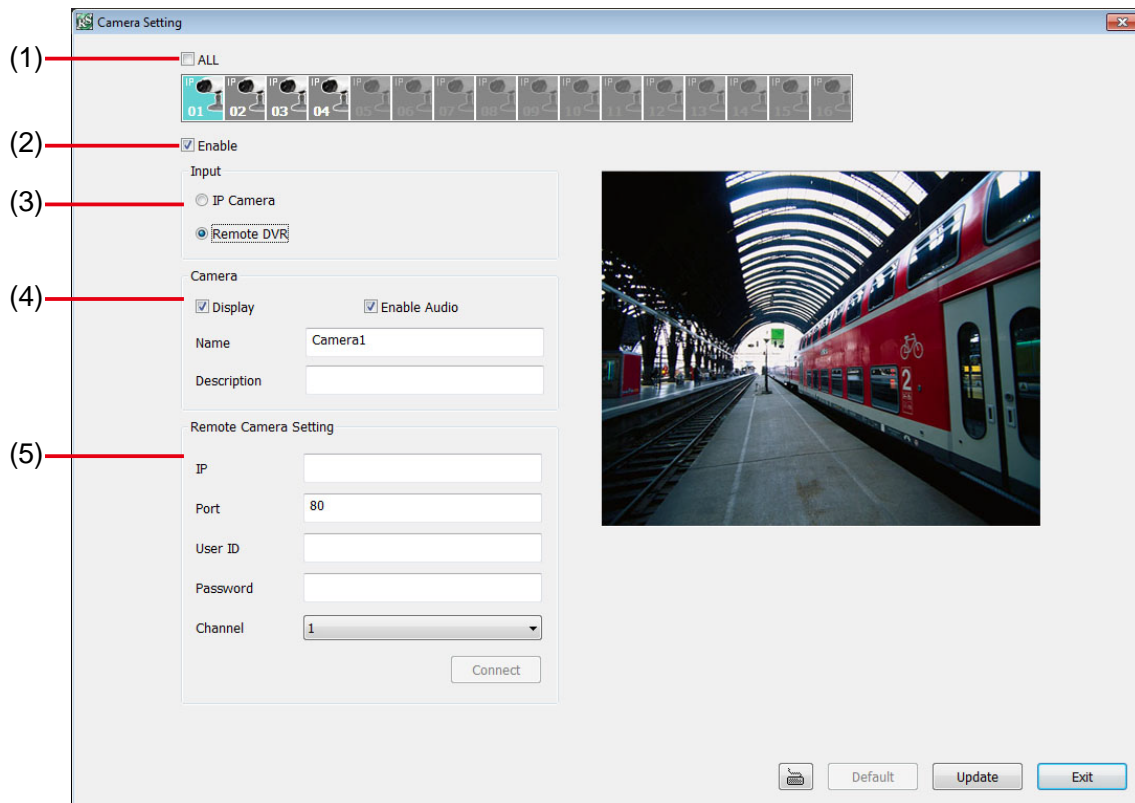
- IP Camera Information:**
  - Protocol: AVerMedia (dropdown), Search Devices (button)
  - Model: SF1301(W) (dropdown)
  - Video Format: AUTO (dropdown)
  - Channel: 1 (dropdown)
  - IP Camera Site: 192.168.2.28 : 80
- Authentication:**
  - Authentication
  - ID: admin
  - Password: (empty field)

Buttons: OK, Cancel

1. Select the **Protocol**, **Model**, **Video Format**, and **Channel** of the IP camera.
2. Enter IP address and connecting port in **IP Camera Site** column.
3. Also, user can enter URL of IP camera instead of IP address.
4. If the IP camera has authority request, please enable **Authentication** and enter **ID** and **Password**.
5. Click **OK** to connect with the IP camera.

## Remote DVR Camera Setting

Select the camera to modify settings. In the Camera Setting window, click **Update** to save and apply the new settings, click **Exit** to exit without saving.



### (1) Camera Icons

Select the camera number you want to view. To enable/disable all cameras, click **ALL** check box.

### (2) Enable

Set to enable/disable the selected camera. When there is no video source on the camera, we suggest disabling it so that the system won't detect it as video loss error.

### (3) Input

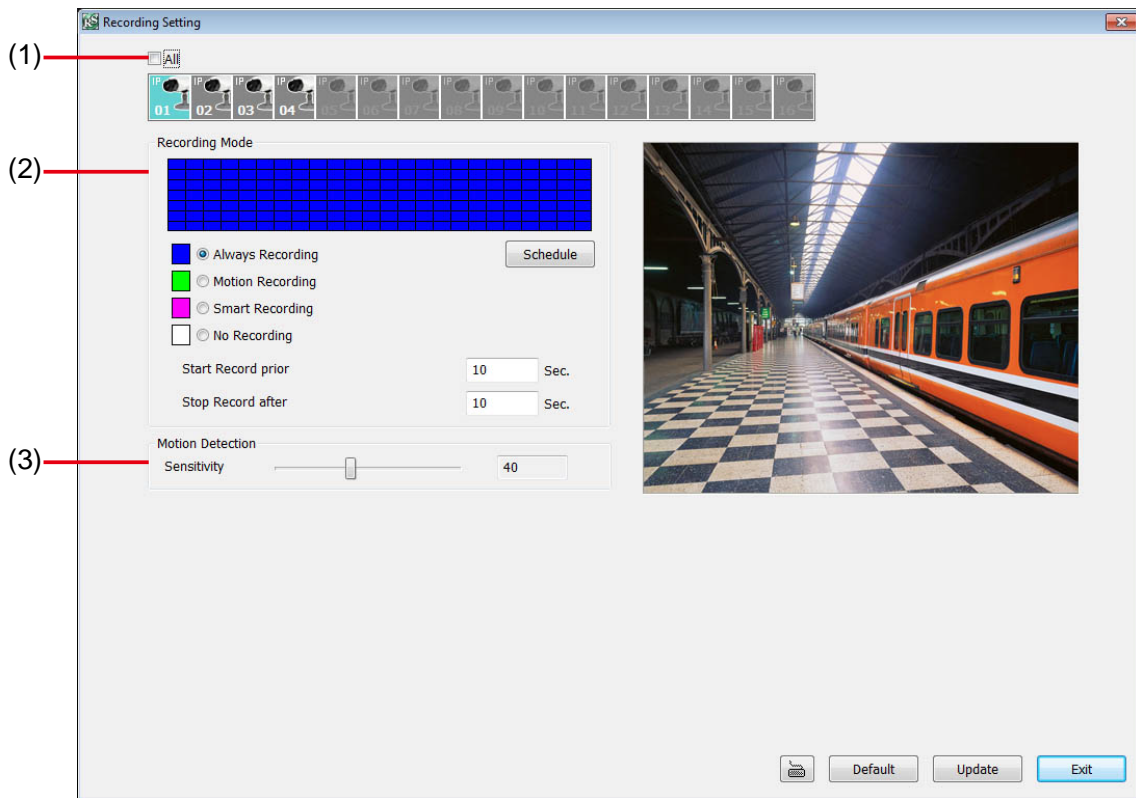
Select the camera type as **Remote DVR**. For IP camera setting, see [IP Camera Setting](#).

### (4) Camera

- **Display**  
Enable/disable to show the video. Even if the video of the selected camera is hidden you can still record the video and preview it in playback mode.
- **Enable Audio**  
Enable/disable audio of the camera.
- **Name**  
Change the camera name
- **Description**  
Add a short comment
- **IP**  
Enter the IP address of the camera
- **Port**  
The port for connection
- **User ID**  
Enter the user id that for connecting authority
- **Password**  
Enter the password that is for connecting authority
- **Channel**  
Select the channel of connected camera

### 9.2.2.3 Record Setting

In the Recording setup window, click **OK** to accept the new settings, click **Exit** to exit without saving, and click **Default** to revert back to original factory setting.

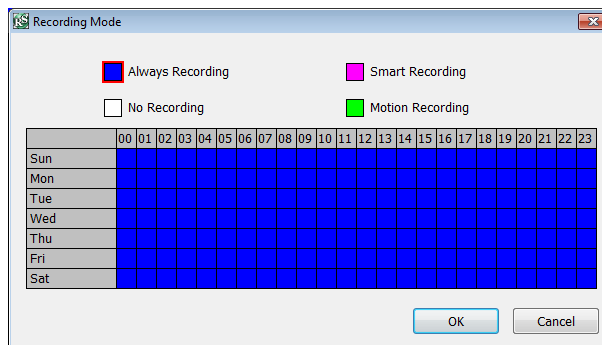


#### (1) Camera Icons

Select the camera number you want to set the recording setting. To select all the cameras, enable the **ALL** check box. To select more than one camera, **Right click** on the camera icon. To select one camera only, **Left click** on the camera icon. The camera icon turns purple when it is selected.

#### (2) Recording Mode

The horizontal blocks from 00 to 23 represent the time in 24-hour clock and the vertical block 1 to 7 represent the day in the week block (Sunday to Saturday). To record in full 24 hours and 7 days a week, select the recording mode and click the  button. If you want to only record at a particular time or day, click **Schedule** button and select the **Recording Mode**, and then click on the time or day blocks. When the system starts recording a red triangle mark would appear at the upper left corner of the screen.



The recording modes are listed below:

- **Always Recording**  
Record the video from the selected camera and save it to the designated storage path
- **Motion Recording**  
Start recording the video from the selected camera only when the system detects movement. Once a motion is detected, the system automatically saves the previous frames and stop based on the **Start Record Prior** and **Stop Record After** settings.

- **Smart Recording**

Automatically switch to recorded at the maximum frame rate setting once a motion is detected and if there is no motion, it records at the minimum frame rate setting.

- **No Recording**

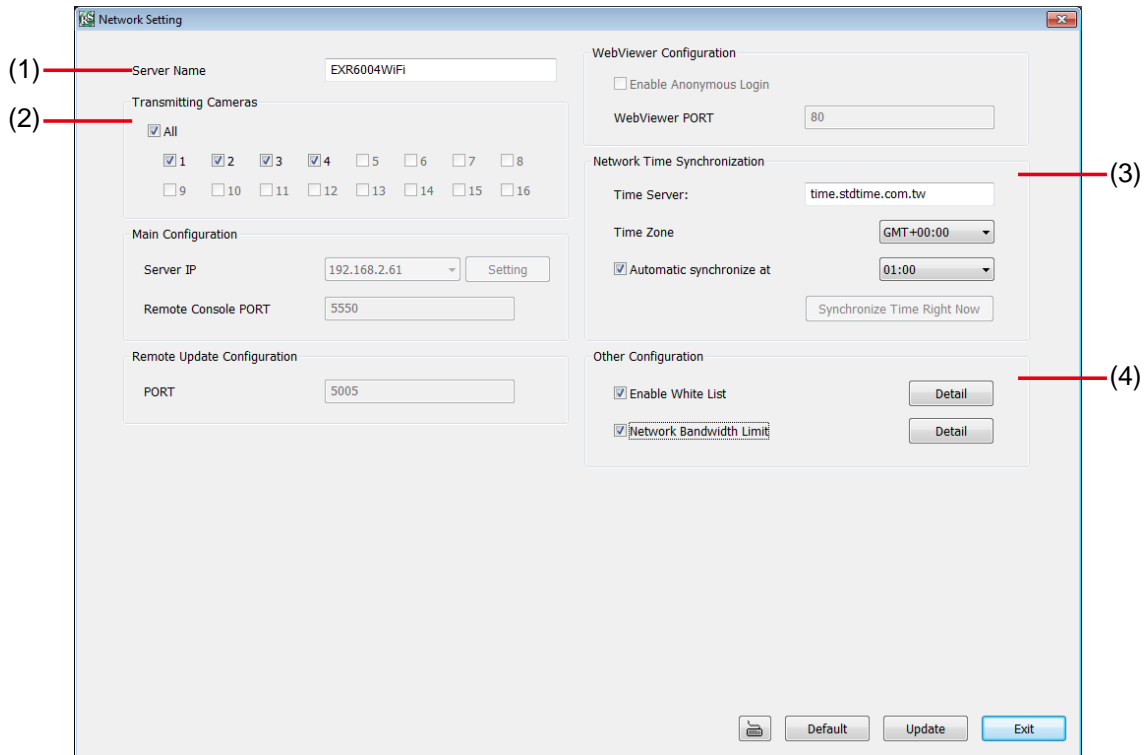
The system won't do any recording.

**(3) Motion Detection**

Adjust the sensitivity of the motion detection. The higher the value, the finer the sensitivity is detected. When it detects a motion, a green triangle mark would appear at the upper left corner of the screen.

## 9.2.2.4 Network Setting

In the Network Setting dialog box, click **Update** to accept the new settings, click **Exit** to exit without saving, and click **Default** to revert back to original factory setting. For the network service ports that use by DVR server, please see [Appendix A](#).



### (1) Server Name

Assign a name for the DVR unit. Alphabet letters and numbers only.

### (2) Transmitting Cameras

Select and click on the camera number in the Transmitting Camera section you want to make it accessible via internet using WebViewer, Remote Console, PDA Viewer and JAVAViewer (still image). To select all the cameras, enable the **ALL** check box.

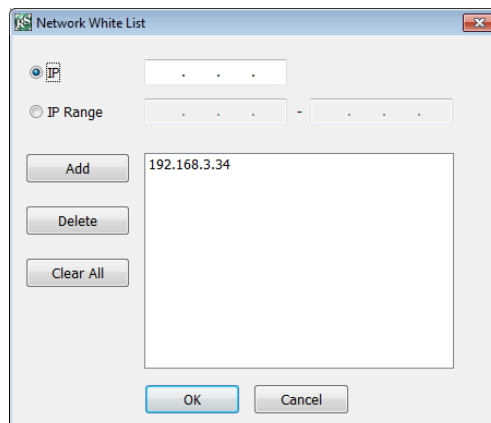
### (3) Network Time Synchronization

Adjust the DVR system time same as network time server. Fill in the **Time Server** IP address or domain name. Select the **Time Zone** that DVR is located. And then, mark the **Automatic Synchronize** time to set automatic synchronize time on a daily basis.

### (4) Other Configuration

#### - Enable White List

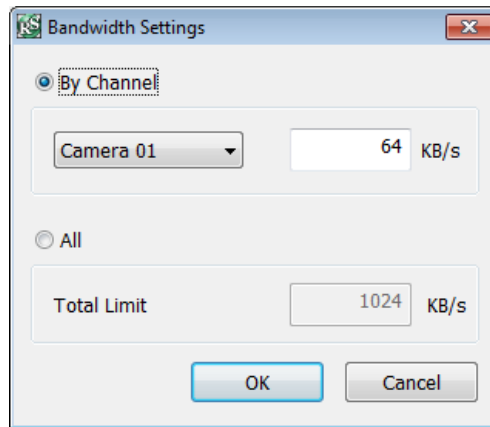
An access permit list for the remote accessing of DVR server. Enter the IP address and click **Add**. Or, enter a range of IP address and click **Add**. To delete the IP from the list, select the IP and click **Delete** button. To reset the input, click **Clear** button.



- **Network Bandwidth Limit**

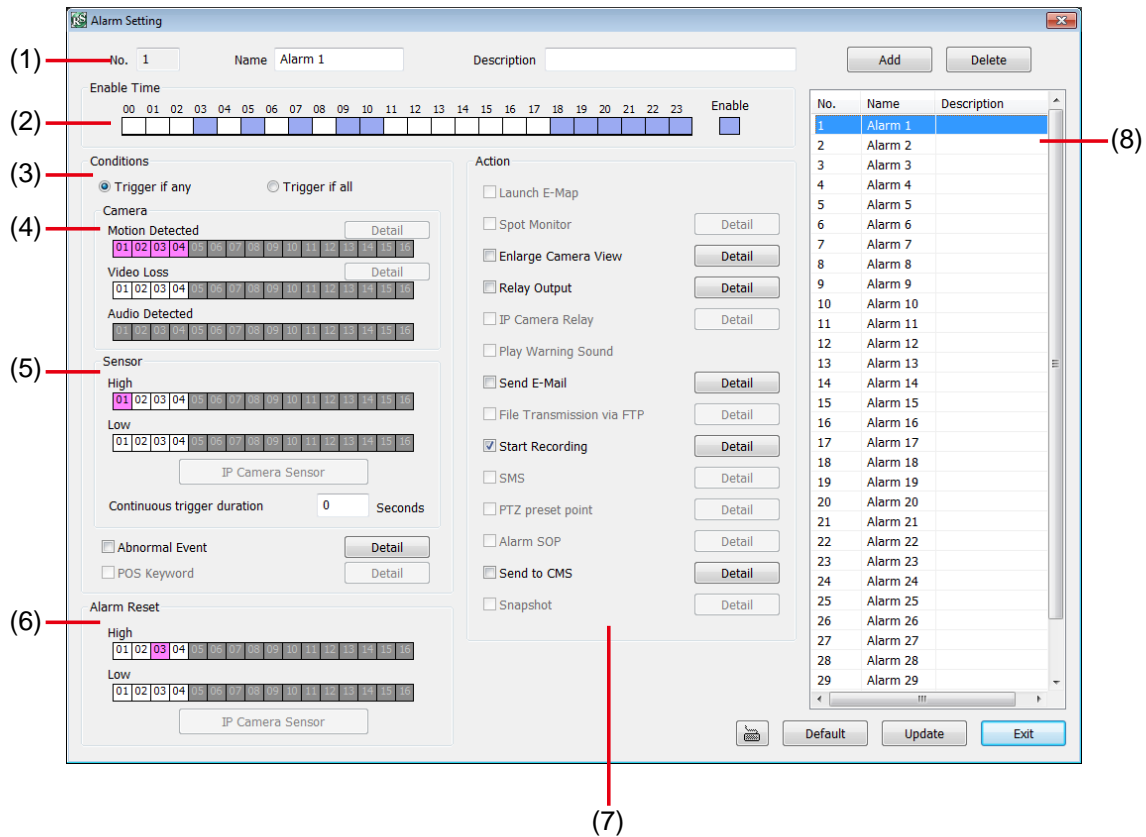
**By Channel:** Set the network bandwidth by each channel.

**All:** Set the total network bandwidth consumption limit.

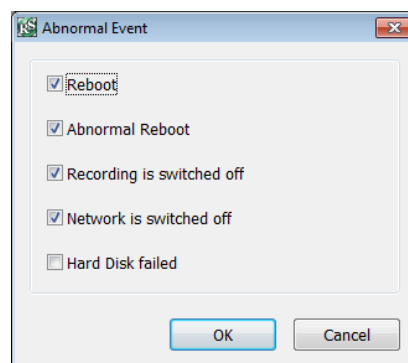


## 9.2.2.5 Alarm Setting

In the Alarm Setting dialog box, click **Add** to insert and set new alarm setting, click **Delete** to remove the selected alarm setting, click **Update** to save the setting, **Exit** to exit without saving, and **Default** to revert back to original factory setting.



1. Click **Add** to insert and set a new alarm setting. Click the items in the **(8) Alarm Setting List** if you want to modify the alarm setting.
2. In **(1) No./Name/Description** enter alarm name and description. Alarm **No.** will be created by DVR system.
3. In **(2) Enable Time**, the number from 00 to 23 represent the time in 24-hour clock. Select the time and click the block you want to activate or deactivate the alarm function. When it is deactivated the color of the block turns white.
4. In **(3) Conditions**, you can set “**Trigger if any**” to activate if it falls to one of the conditions or “**Trigger if all**” to activate if it falls to all conditions.
5. In **(4) Camera** section, select and click on the camera number (01 to 04) in **Motion Detected** and **Video Loss** to set the condition for the system to alarm.
6. In **(5) Sensor**, select and click on the sensor number to set the condition for the system to alarm. If the sensor normal status is high, set the sensor condition to low.
  - Enable/disable the **Abnormal Event** check box, to set the condition of the event for system to alarm.



- **Reboot:** when the DVR system reboot without abnormal condition, the system will send out the alarm message.
- **Abnormal Reboot:** when the DVR system reboot in irregular condition, the system will send out the alarm message.
- **Recording is switched off:** when the recording has been stopped, the system will send out the alarm message.
- **Network is switched off:** when the network connection of DVR system is lost, the system will send out the alarm message.
- **Hard Disk failed:** when the hard disk doesn't work normally, the system will send out the alarm message.

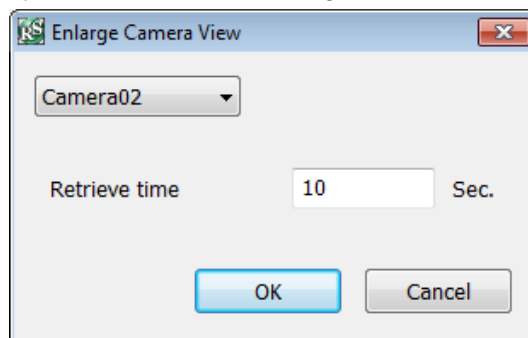
- **Continue trigger duration:** Set a time period that when sensor has been trigger and stay in the same status for that period, then the alarm will be sent out.

7. In **(6) Alarm Reset**, click the camera number to set the reset condition of alarm. Once alarm is reset, all alarm action will stop at the moment. If the sensor normal status is high, set the alarm reset condition to low.
8. In **(7) Action**, you may now set the alarm action for the system to perform when the alarm condition is activated.

- **Enlarge Camera View**

Switch to only display video in Preview mode from where the alarm is activated.

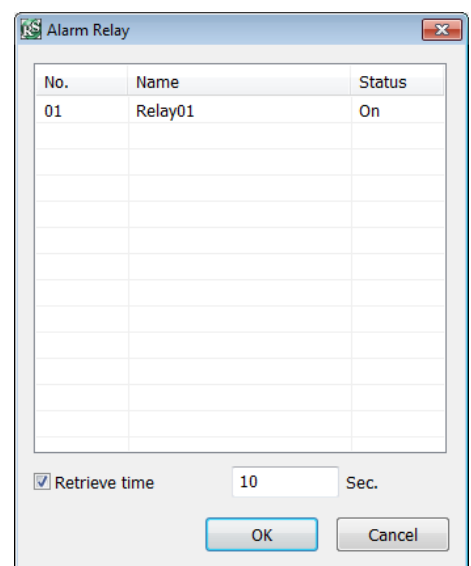
- a. Select the camera from drop down list to specify which camera video to be enlarged on screen when the alarm is triggered.
- b. **Retrieve time:** set the waiting duration before system switching back to original Preview mode. If the retrieve time is un-mark, the alarm video will keep enlarging until user switch back to Preview mode manually. The retrieve time range is 0~ 600 seconds.



- **Relay Output**

Set to enable/disable the relay operation when the alarm is activated and to extend additional time in second before it stops the relay operation.

1. Beside the Relay Output check box, click **Detail**.
2. In the Alarm Relay dialog box, select from the available relay list and in the ON column, set to enable/disable the relay operation when the alarm is activated.
3. In the Retrieve time check box, you may enable/disable to extend the relay operation time and set the duration in second.
4. Click **OK** to exit and accept the setting and **Cancel** to exit without saving the setting.

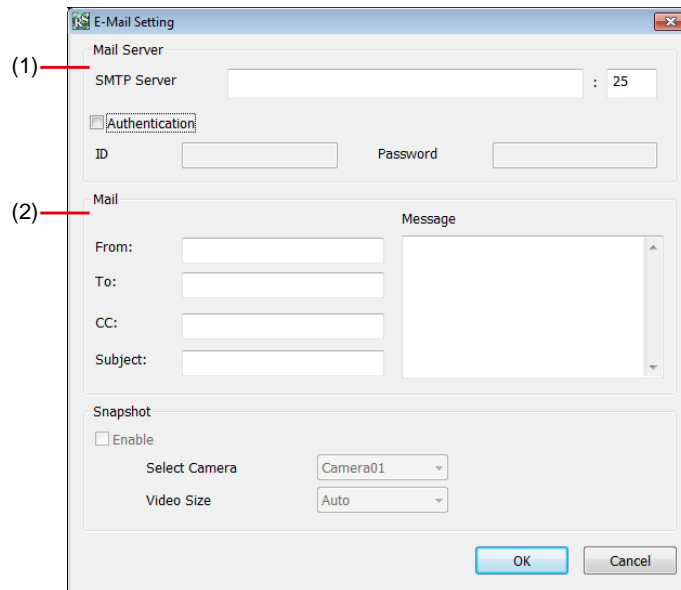




- **Send E-mail**

Send an electronic text message. Beside the Send Email check box, click **Detail**.

In the E-mail Setting dialog box, click **OK** to exit and save the setting and **Cancel** to exit without saving the setting.



**(1) Mail Server**

Enter the **SMTP Server** and **port**. If your e-mail system requires user identification, enable **Authentication** check box and enter **ID** and **Password**.

**(2) Mail**

Fill the mailing information.

**From:** Enter the sender e-mail address.

**To and CC:** Enter the recipient email address and separate it with comma or a semicolon (;).

**Subject:** Enter the message title.

**Message:** Type the message.

- **Start Recording**

Record the video from the selected camera.

1. Beside the Start Recording check box, click **Detail**.

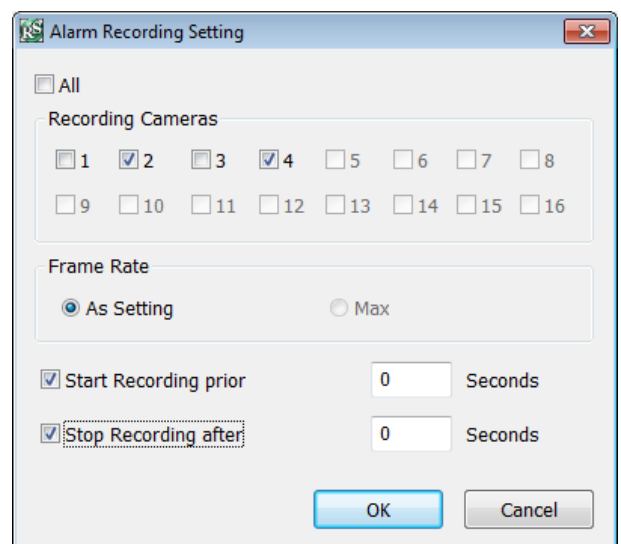
2. In the Alarm Recording Setting dialog box, select the camera to enable/disable video recording. Enable **All** to select all cameras.

3. In the Frame Rate selection, select **As Setting** to record the number of frames based on the Recording Setting.

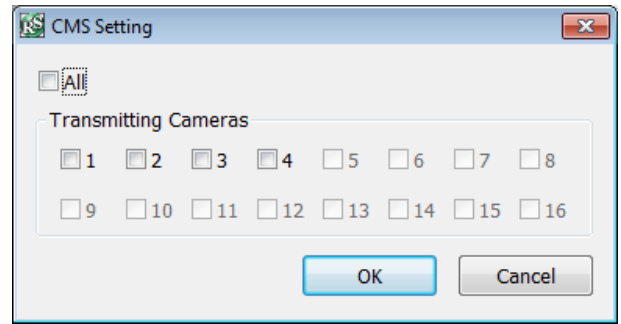
4. In the **Start Record prior** text box, mark and set the number in second for the program to begin recording after the alarm has been trigger. The time range is 1~10 seconds.

5. In the **Stop Record after** text box, mark and set the number in second for the program to continue recording after the alarm has ended. The time range is 1~999 seconds. If user doesn't mark and set the time, the alarm recording will continue recording until alarm is reset.

6. Click **OK** to accept the new settings and **Cancel** to exit without saving.



- **Send to CMS (Central Management System)**  
Enable/disable the selected camera to send video to CMS when the alarm is activated. Beside the Send to CMS check box, click **Detail**. In the CMS Setting, select the camera to enable/disable sending the video to CMS. Enable **All** to select all cameras. Then, click **OK** to accept the new settings and **Cancel** to exit without saving.



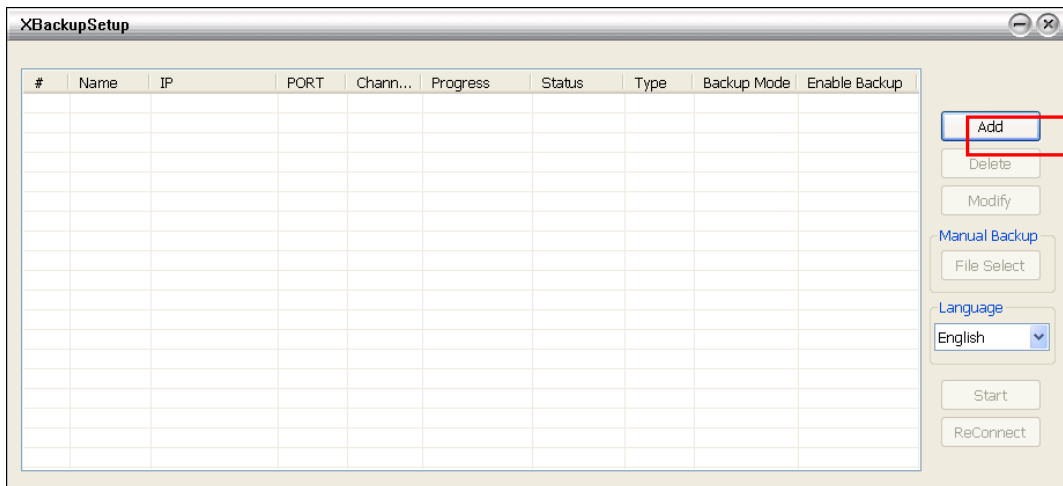
## 9.3 Remote Backup

Remote Backup is purely for backing up the \*.dvr file from the DVR sever. You can select between Auto Backup and Manual Backup. Auto Backup continuously archives one hour of the recorded data at a time, starting from the specified date. As for Manual Backup, it only archives the recorded data of selected date.

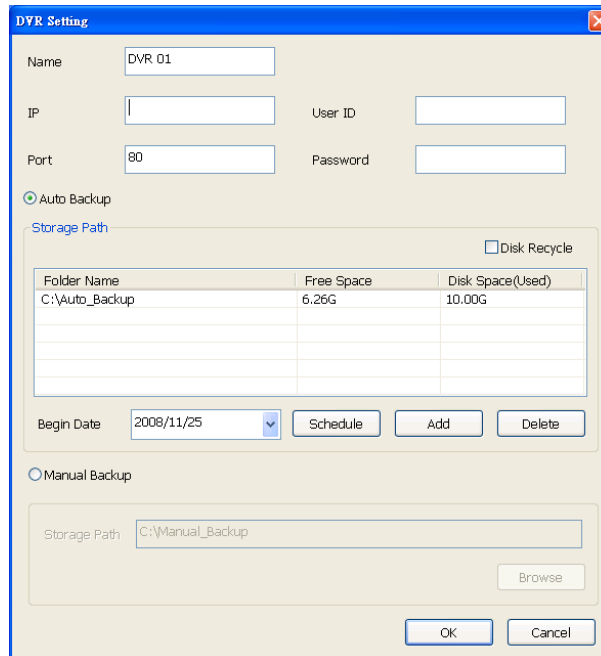
**i** To back up the data, you must have at least 2G hard disk space.

### 9.3.1 To back up the recoded data from the DVR server:

1. Make sure you are connected to the internet.
2. Click **Start >> Program >> Web Tool >> Remote Backup**
3. To add the DVR server, click **Add**



4. In the Add New DVR window, enter the Name, IP, user ID, and password.



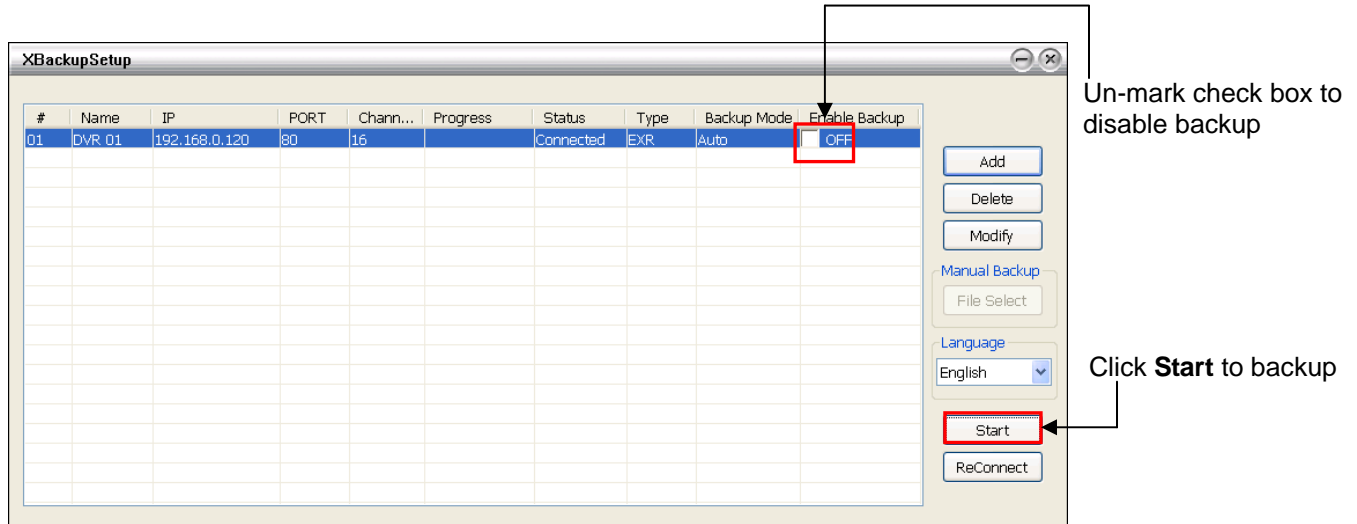
5. Select the Backup mode:
  - Auto Backup mode:** the backup will automatically execute when the setup is completed
    - In Begin Date drop down calendar, select the date from where to start
    - Click **Add** to set the storage path.
    - Click **Delete** to remove the selected storage path.
    - Click **Schedule** to select/unselect the time you want to backup. The red block turns white when it is unselected.

- Enable/disable **Disk Recycle** check box, to automatically overwrite the oldest file when there is not enough free space to backup the file.

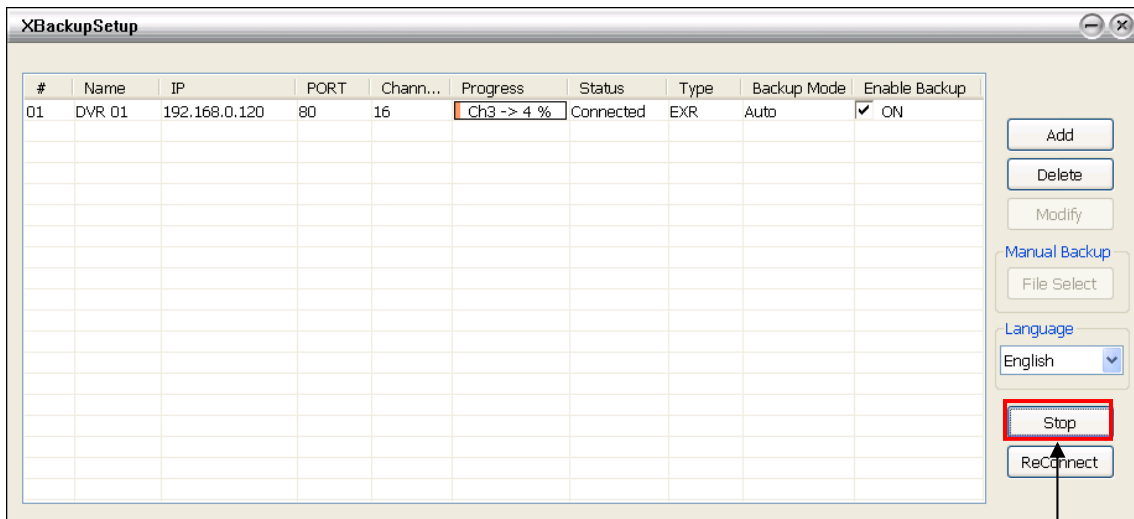
**Manual Backup mode:** the backup progress will start when user press the backup button

- Click **File Select** to choose the date, time and camera you want to back up.
- Click **Browse** to set the storage path.

6. Click **OK** to complete the adding DVR server. The added DVR server will display in Remote Backup main window.

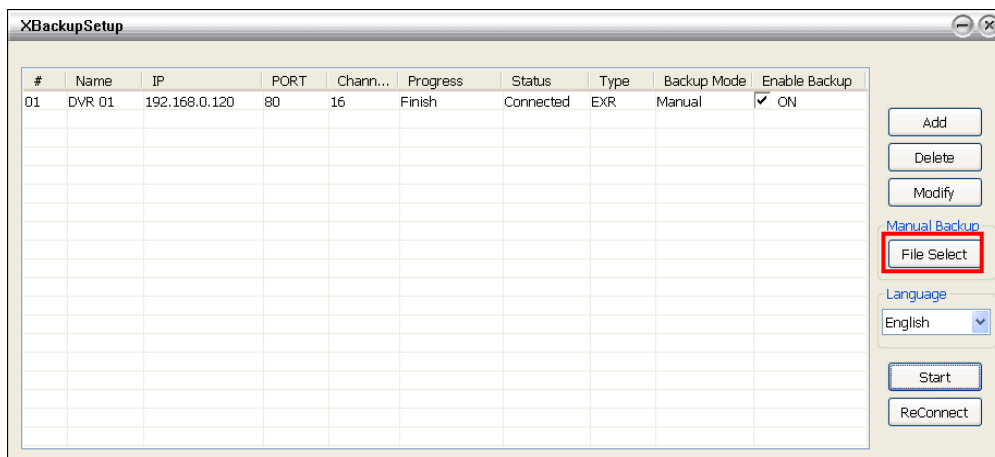


7. Click **Start** to begin backup and click Stop to stop backup progress.



While backup, the **Start** button will turn to **Stop** button

8. For manually backup, click **File select** button and select the DVR to backup.




## Appendix A Registering Domain Name

DDNS (Dynamic Domain Name Service) is a data query service mainly used on the Internet for translating domain names into Internet addresses. It allows remote clients to intelligently search dynamic servers without any previous enquiring for servers' Internet addresses.

In order to take advantage of this intelligent service, first register your domain name on the following Web site <http://ddns.avers.com.tw>

### 1. User Login

Browse the website [ddns.avers.com.tw](http://ddns.avers.com.tw) with Microsoft IE or Netscape Navigator to access the following dialog.



The 'User Login' dialog box has a blue header with the title 'User Login'. Below the header, there are two input fields: 'CD-Key No.' with a text box containing an empty field, and 'Product' with a dropdown menu. At the bottom of the dialog, there are two buttons: 'OK' and 'Reset'.

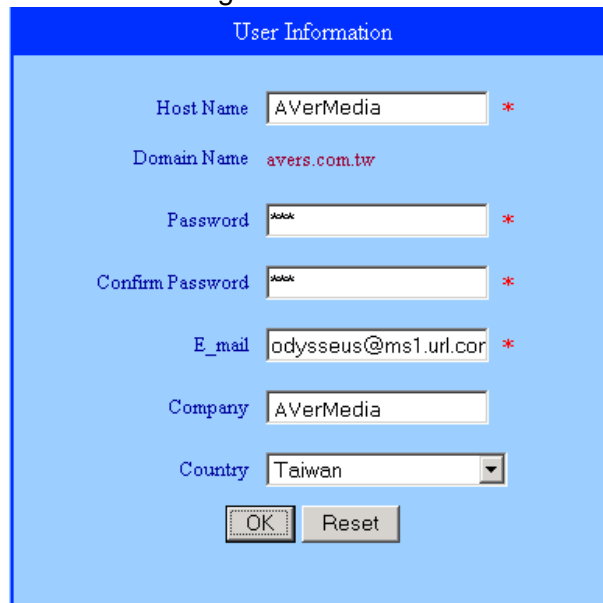
2. First input the MAC address of DVR unit as the CD-Key No. and select the product name. Then click **OK** to login or **Reset** to clear the previous input.



- To know the MAC address of DVR unit, please check the sticker on the back panel of DVR unit.
- Also, user can find the MAC address of DVR unit from the Main Configuration of Network Setting. Please select **SETUP** → **NETWORK** → **Main Configuration**.

### 3. User Information

Please provide the following user information, **Host Name** (user can choose any name he/she likes except the one violence with other users), **Password**, **E-mail**, **Company**, and **Country**. And then, click **OK** to complete the domain name registration.



The 'User Information' dialog box has a blue header with the title 'User Information'. Below the header, there are several input fields: 'Host Name' with a text box containing 'AVerMedia' and a red asterisk; 'Domain Name' with a text box containing 'avers.com.tw'; 'Password' with a text box containing '\*\*\*\*\*' and a red asterisk; 'Confirm Password' with a text box containing '\*\*\*\*\*' and a red asterisk; 'E\_mail' with a text box containing 'odysseus@ms1.url.cor' and a red asterisk; 'Company' with a text box containing 'AVerMedia'; and 'Country' with a dropdown menu showing 'Taiwan'. At the bottom of the dialog, there are two buttons: 'OK' and 'Reset'.

## Warranty Notice

### LIMITED WARRANTY

AVerMedia INFORMATION, Inc. warrants this product to be free of defects resulting from faulty manufacture or components under the following terms:

### WARRANTY LENGTH

Labor is warranted for (1) one year from the date of purchase

Parts are warranted for (1) one year from the date of purchase

Replacement products will be warranted for the remainder of the one year warranty period or (30) thirty days, whichever is longer

### WHO IS PROTECTED

This warranty is enforceable only by the first consumer purchaser

### WHAT IS AND IS NOT COVERED

Except as specified below, this warranty covers all defects resulting from faulty manufacturing of this product. The following are not covered by the warranty.

1. Any product on which the serial number has been defaced, modified, or removed
2. Damage, deterioration, or malfunction resulting from:
  - Accident, abuse, misuse, neglect, fire, water, lightning, or other acts of nature, commercial or industrial use, unauthorized product modification, or failure to follow instructions included with the product.
  - Misapplication of service by someone other than the manufacturer's representative
  - Any shipment damages (Claims must be made with carrier)
  - Any other cause which does not relate to a product defect
3. Cartons, cases, batteries, cabinets, tapes, or accessories used with product
4. AVerMedia does not warrant that this product will meet your requirements; it is your responsibility to determine the suitability of this product for your purpose

### WHAT WE WILL AND WILL NOT PAY FOR

We will pay labor and material expenses for covered items. However, we will not pay for the following:

1. Removal or installation charges
2. Shipping charges
3. Any incidental charges

### EXCLUSION OF DAMAGES

THE MANUFACTURER'S SOLE OBLIGATION AND LIABILITY UNDER THIS WARRANTY IS LIMITED TO THE REPAIR OR REPLACEMENT OF A DEFECTIVE PRODUCT AT OUR OPTION. THE MANUFACTURER SHALL NOT, IN ANY EVENT, BE LIABLE TO THE PURCHASER OR ANY THIRD PARTY FOR ANY INCIDENTAL OR CONSEQUENTIAL DAMAGE (INCLUDING, BUT NOT LIMITED TO, DAMAGES RESULTING FROM INTERRUPTION OF SERVICE AND LOSS OF BUSINESS) OR LIABILITY IN TORT RELATING TO THIS PRODUCT OR RESULTING FROM ITS USE OR POSSESSION.

### LIMITATIONS OF IMPLIED WARRANTIES

There are no other oral or written warranties, expressed or implied, including but not limited to those of merchantability or fitness for a particular purpose. Any implied warranties are limited in duration to one year from the date of purchase

### STATE LAW AND YOUR WARRANTY

This warranty gives you specific legal rights, and you may also have other rights granted under state law. These rights vary from state to state

### CONTACT INFORMATION

Taiwan & International  
5F No. 135, Jian Yi Rd., Chung Ho City, Taipei, Taiwan  
TEL: 886-2-2226-3630  
FAX: 886-2-2226-7241  
Web Site: [www.avermedia.com](http://www.avermedia.com) / [www.averdigi.com](http://www.averdigi.com)