

Annex C Photo documentation

Appendix to Test Report No.: 1-4868/22-02-06

Testing Laboratory

CTC advanced GmbH

Untertürkheimer Straße 6 – 10

66117 Saarbrücken/Germany

Phone: + 49 681 5 98 - 0

Fax: + 49 681 5 98 - 9075

Internet: <http://www.ctcadvanced.com>

e-mail: mail@ctcadvanced.com

Accredited Test Laboratory:

The testing laboratory (area of testing) is accredited according to DIN EN ISO/IEC 17025 (2005) by the Deutsche Akkreditierungsstelle GmbH (DAkkS)

The accreditation is valid for the scope of testing procedures as stated in the accreditation certificate with the registration number: D-PL-12076-01-01

Photo 1: Measurement System DASY

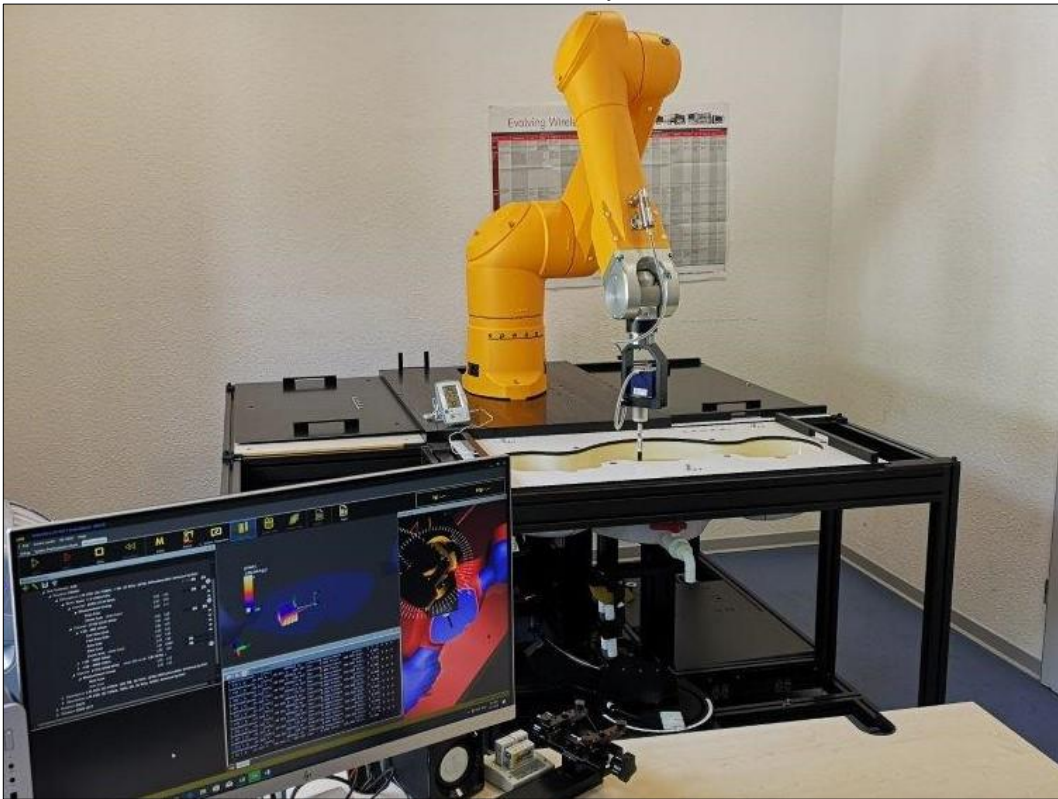


Photo 2: DUT - front view



Photo 3: DUT - right view



Photo 4: DUT - back view



Photo 5: DUT - back view open

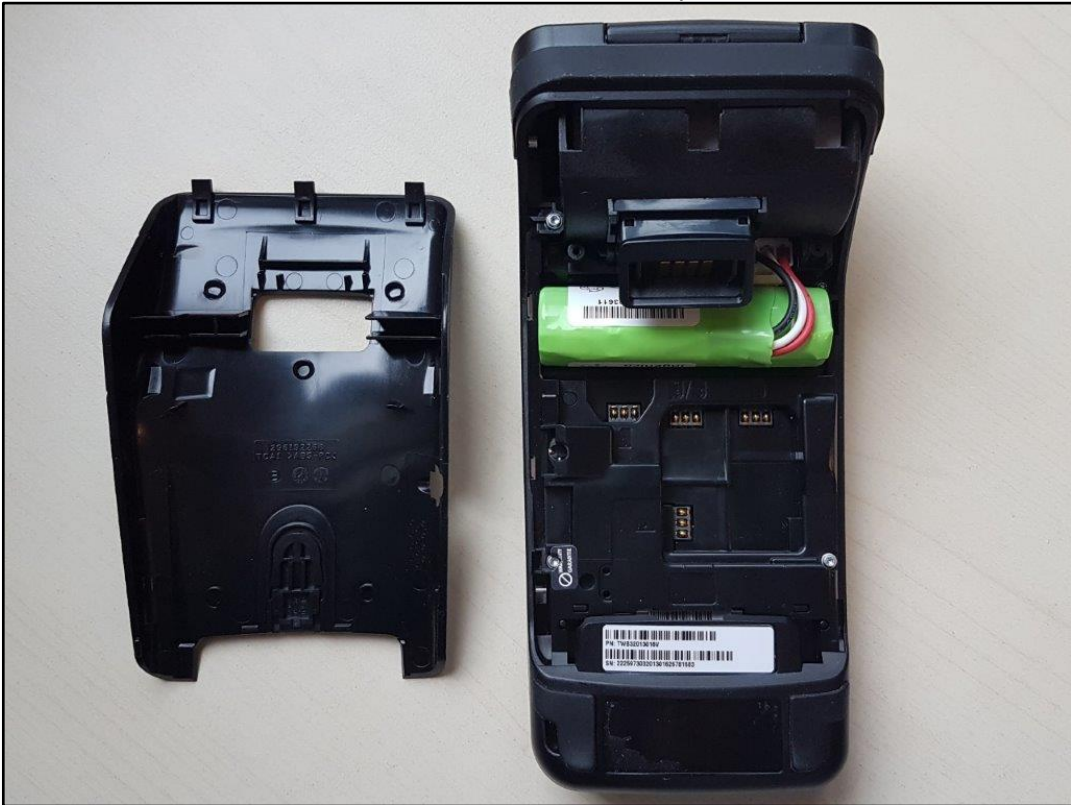


Photo 6: DUT - back view open without battery



Photo 7: DUT - label



Photo 8: Battery



Photo 9: Test position front side without any distance



Photo 10: Test position back side without any distance



Photo 11: Test position left side without any distance



Photo 12: Test position right side without any distance



Photo 13: Test position top side without any distance



Photo 14: Test position bottom side without any distance

