

Internal photos of the EUT

Photo 1: Bottom side back cover removed



Photo 2: Wifi module removed

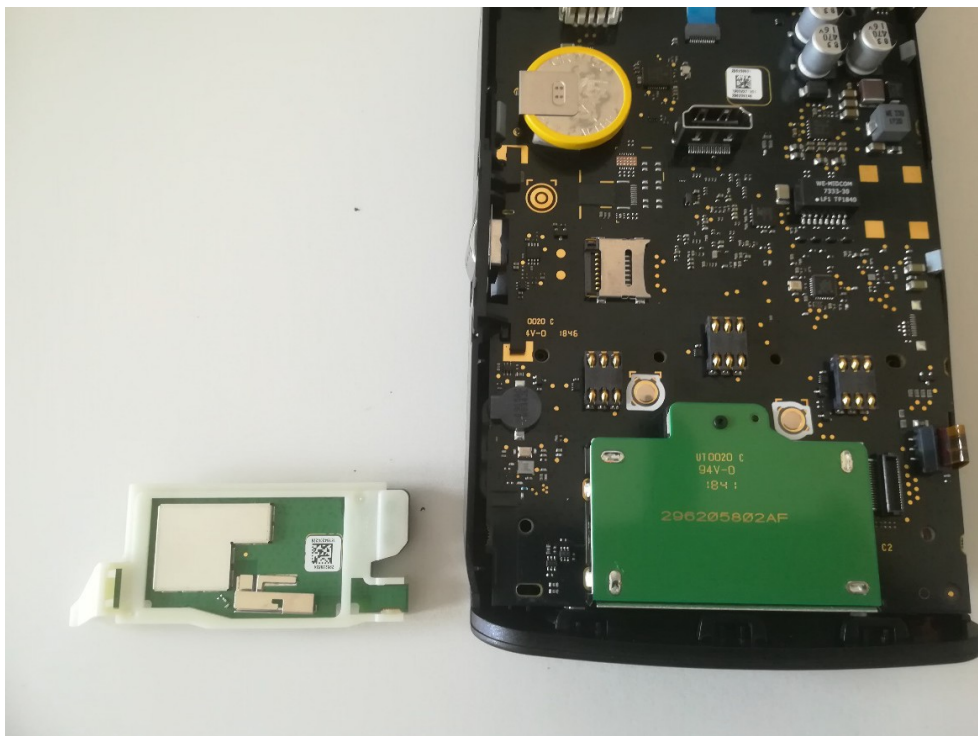
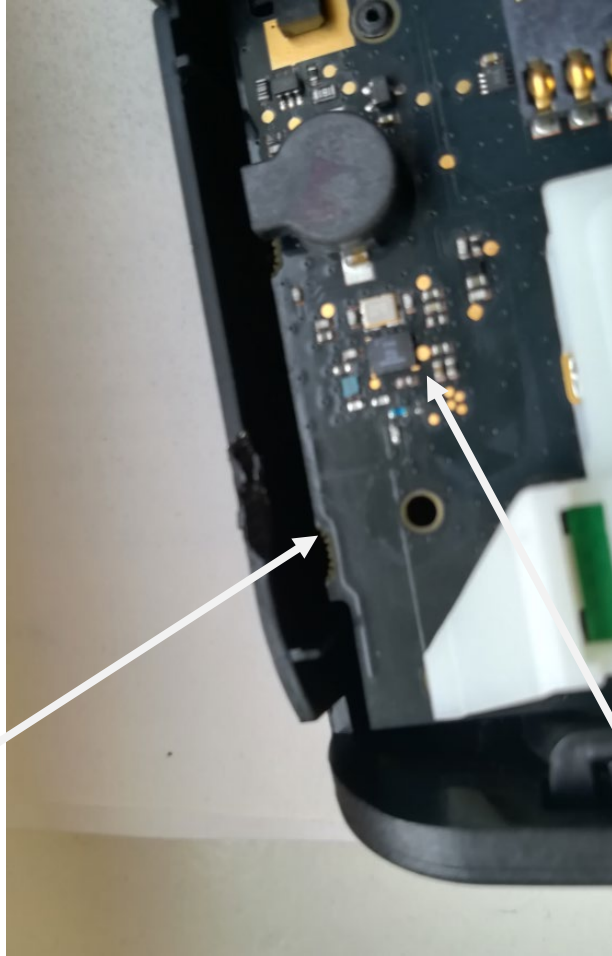


Photo 3: Bluetooth electronics and antenna



Bluetooth
antenna

Bluetooth
electronics

Photo 4: PCB removed from case

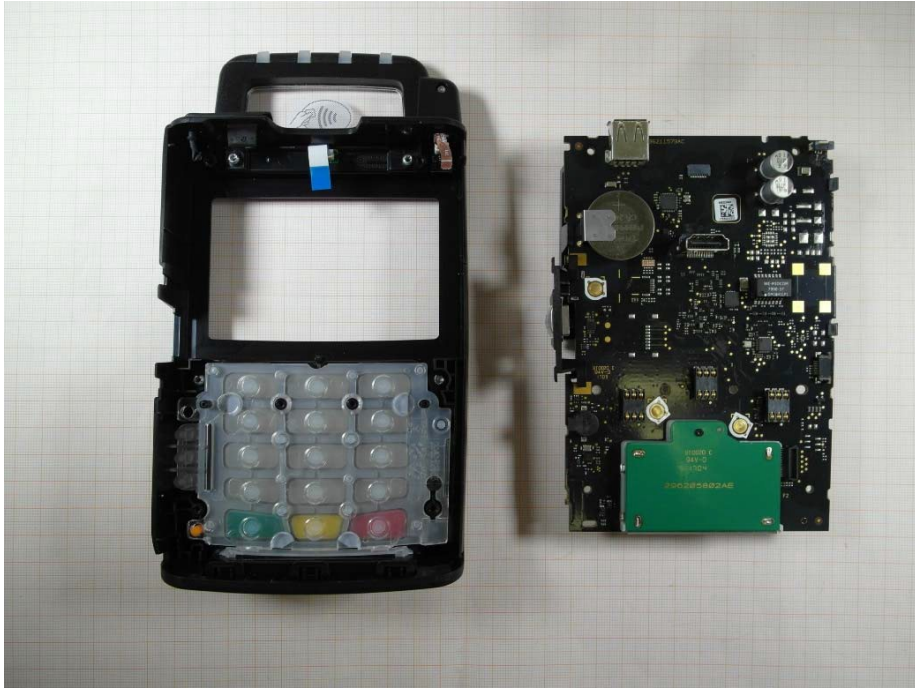


Photo 5: view on PCB with display and card reader



Photo 6: PCB with display removed

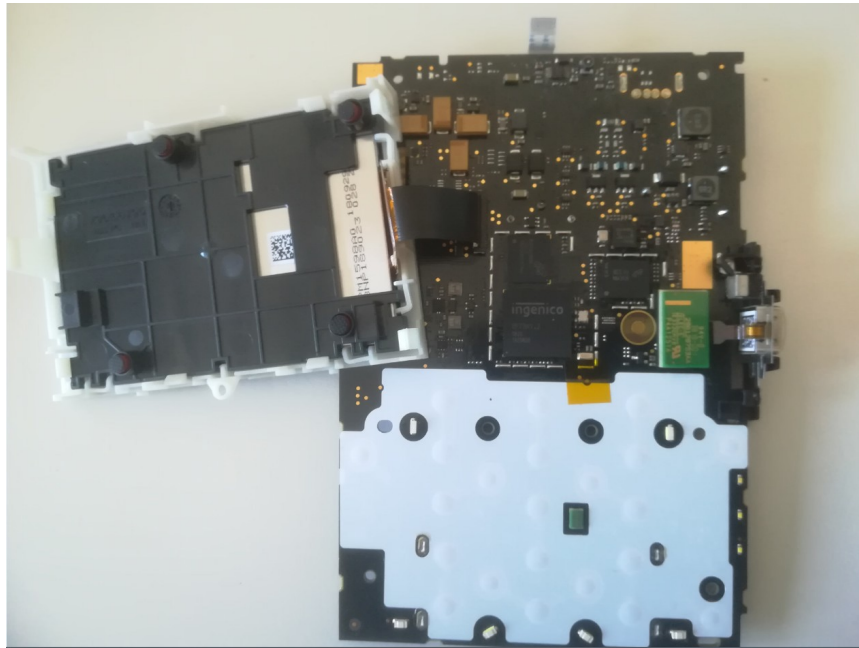


Photo 7: electronics underneath the display

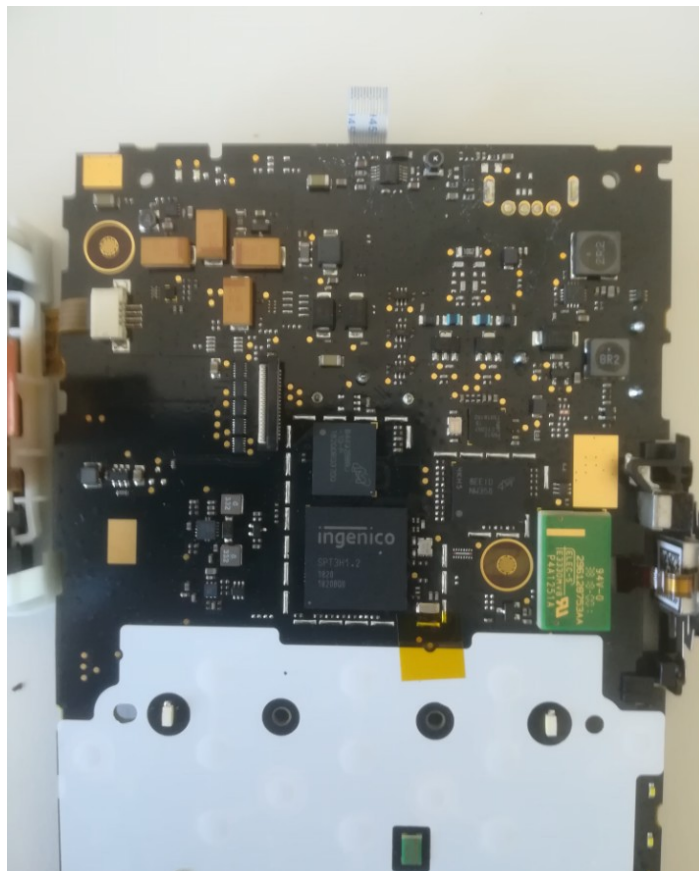


Photo 8: Wifi module Top view (shield removed)

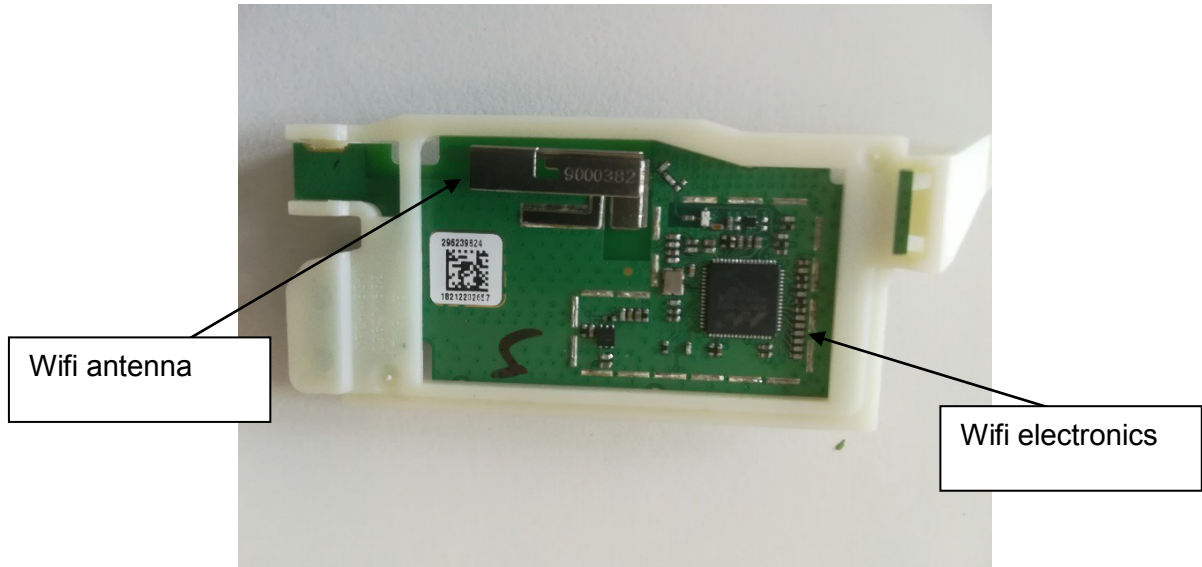


Photo 9: Wifi module bottom view

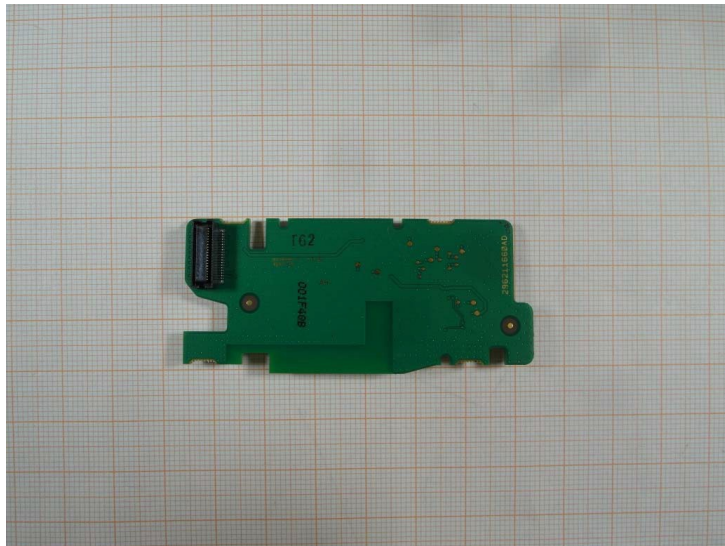


Photo 10: RFID electronics

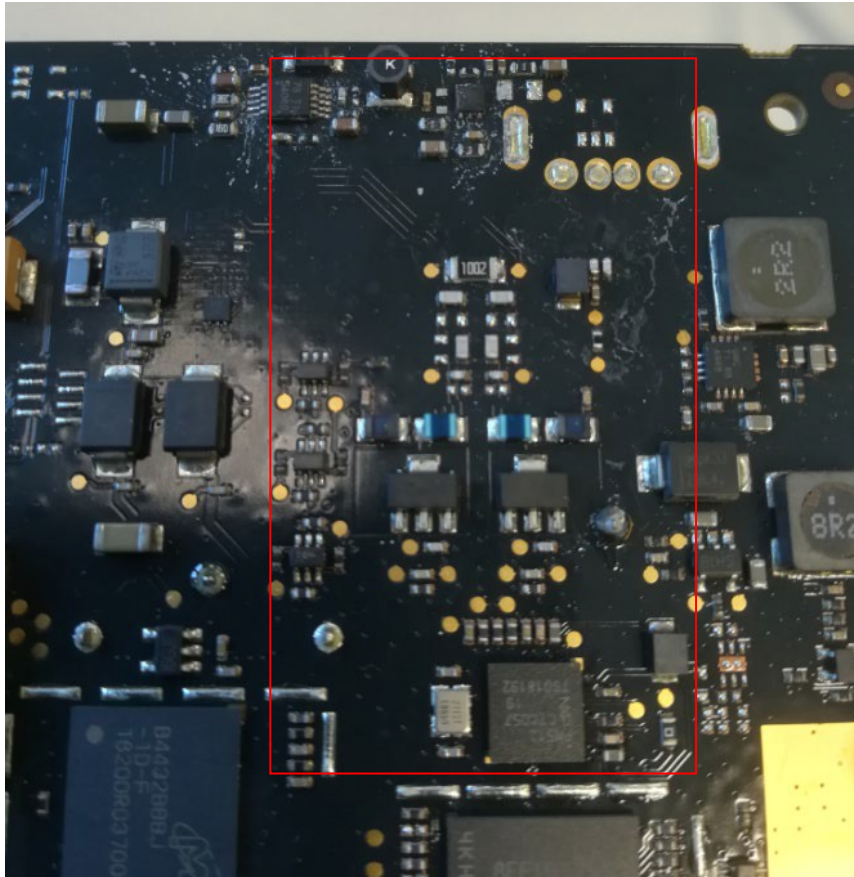


photo 11: top side



Photo 12: Contactless antenna



