

INTERNAL PHOTOS OF TESTED EUT

IWL251-01T1541A

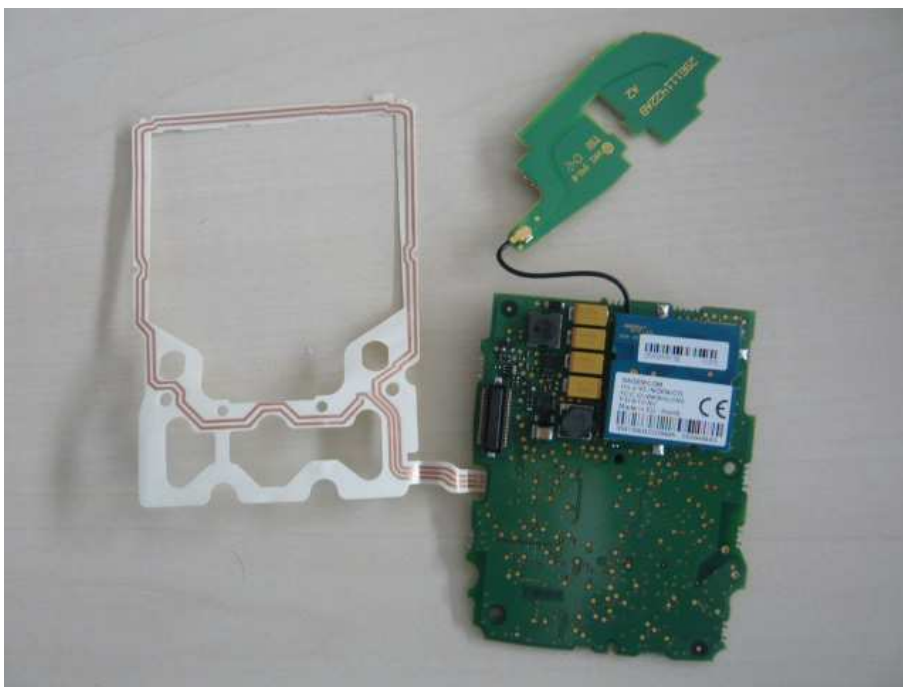


General views without enclosure





General views without enclosure

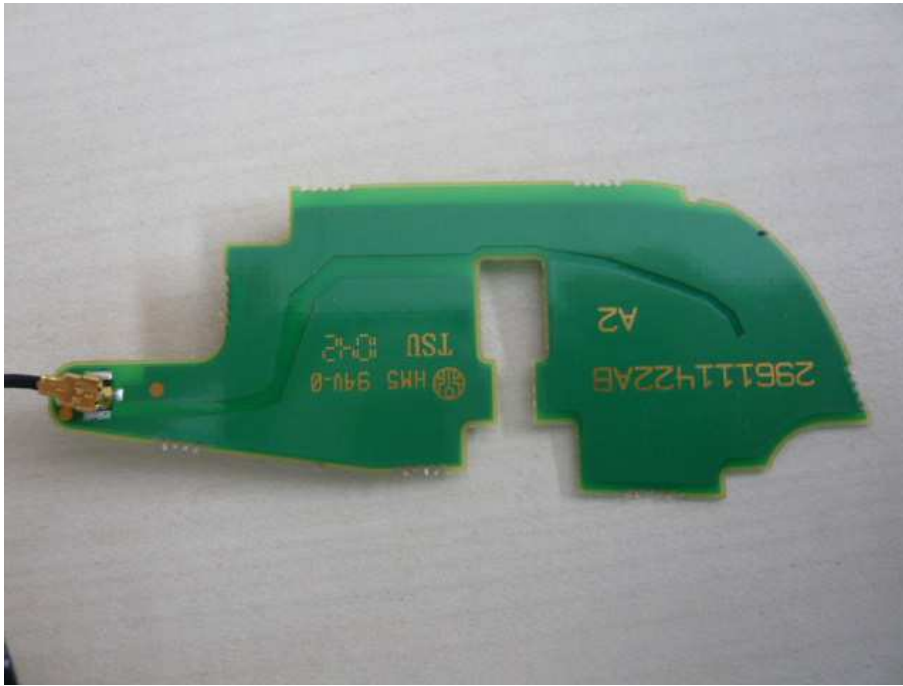


View of RF card

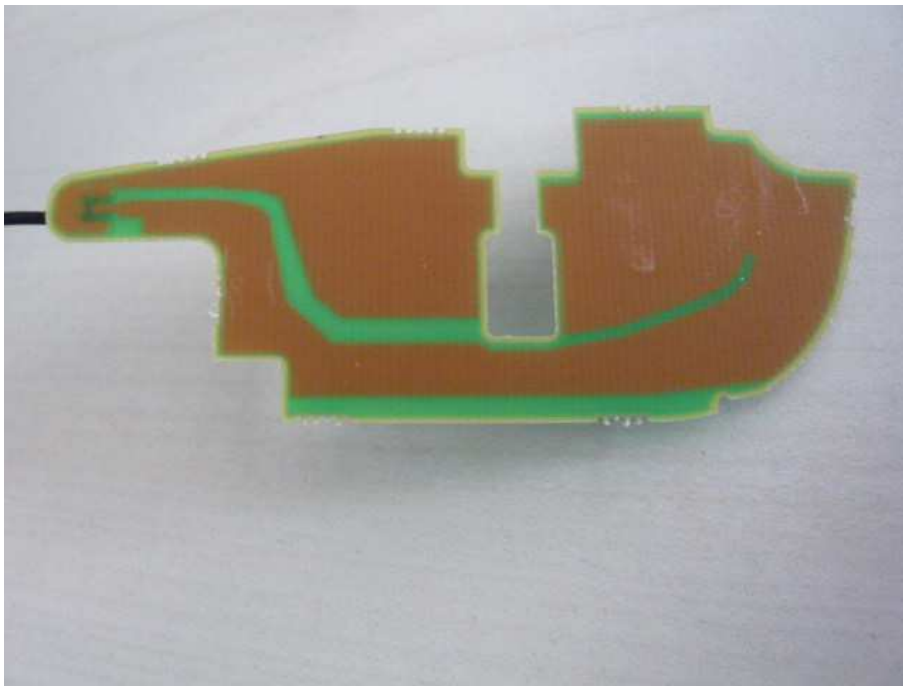


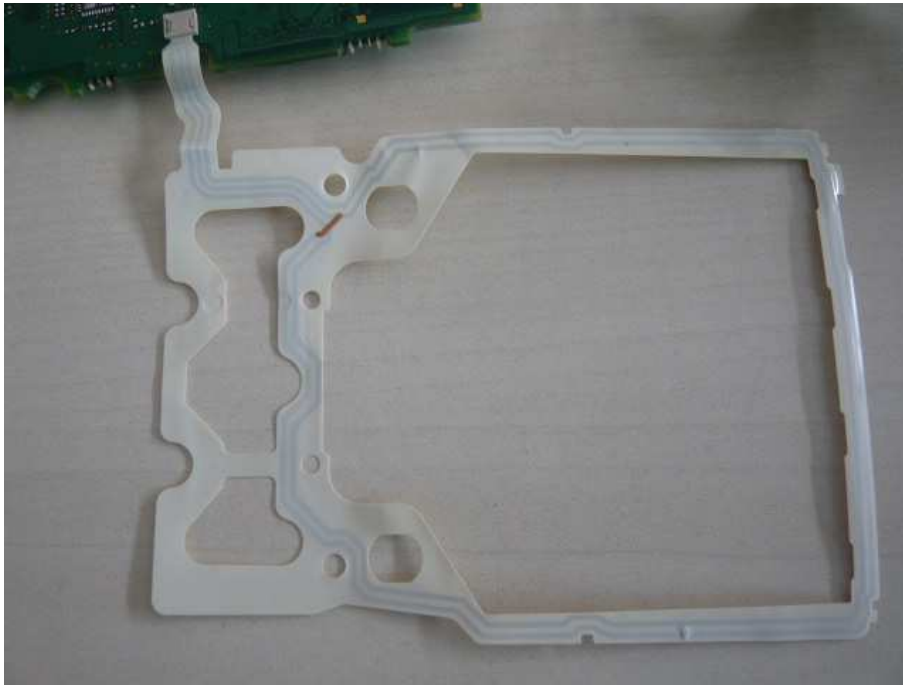
Views of enclosure





Views of GPRS antenna

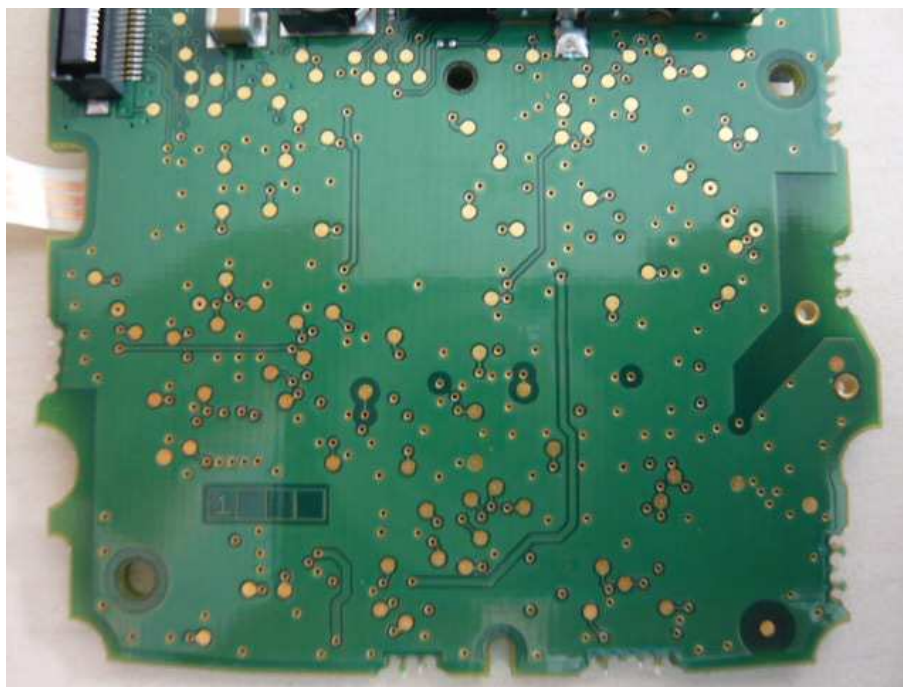


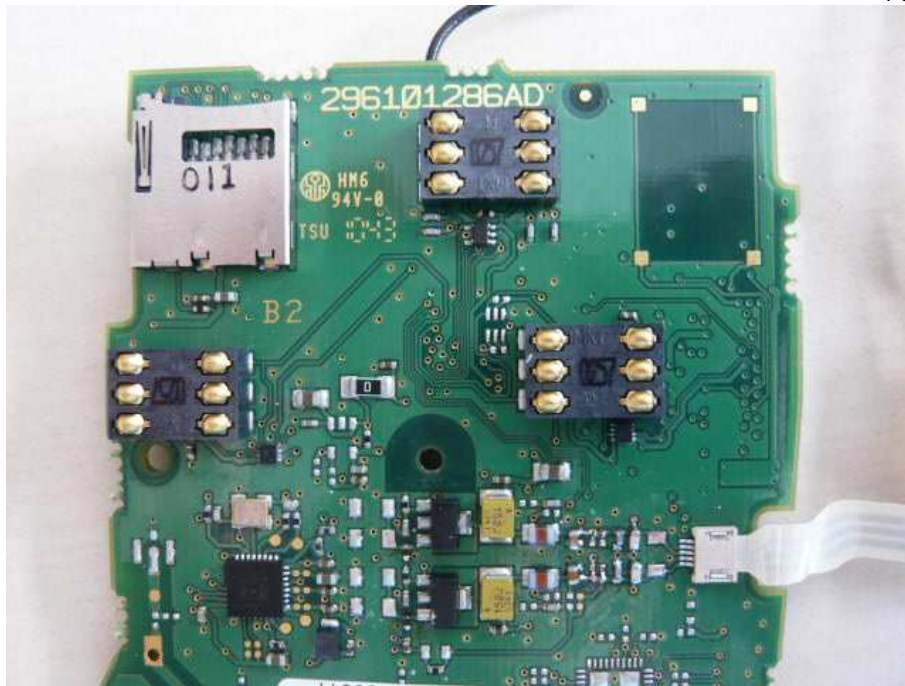


View of RFID antenna



Detail views of RF card and GPRS module





Detail views of RF card





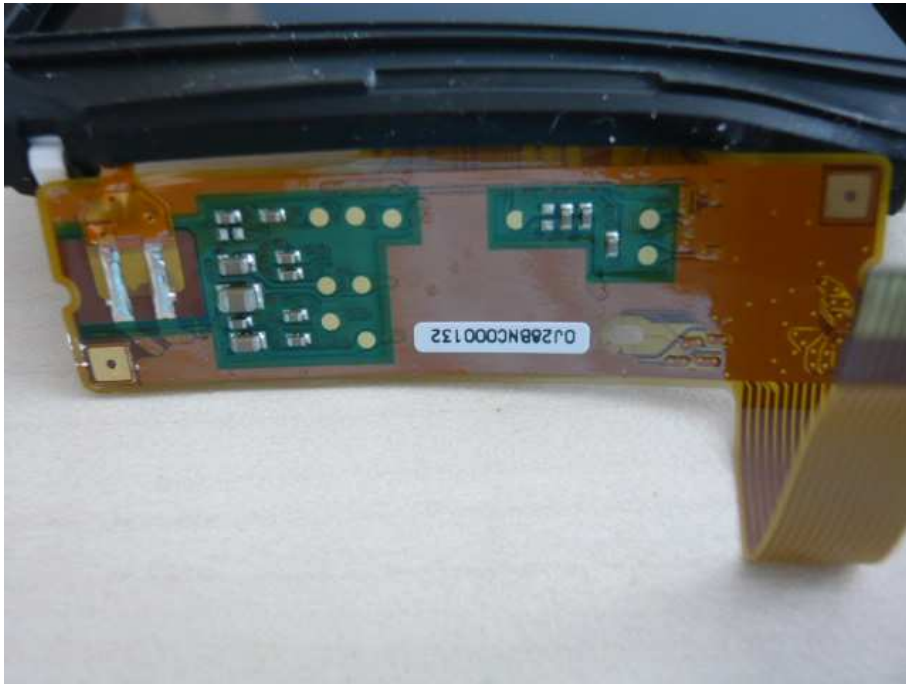
General views of PCB





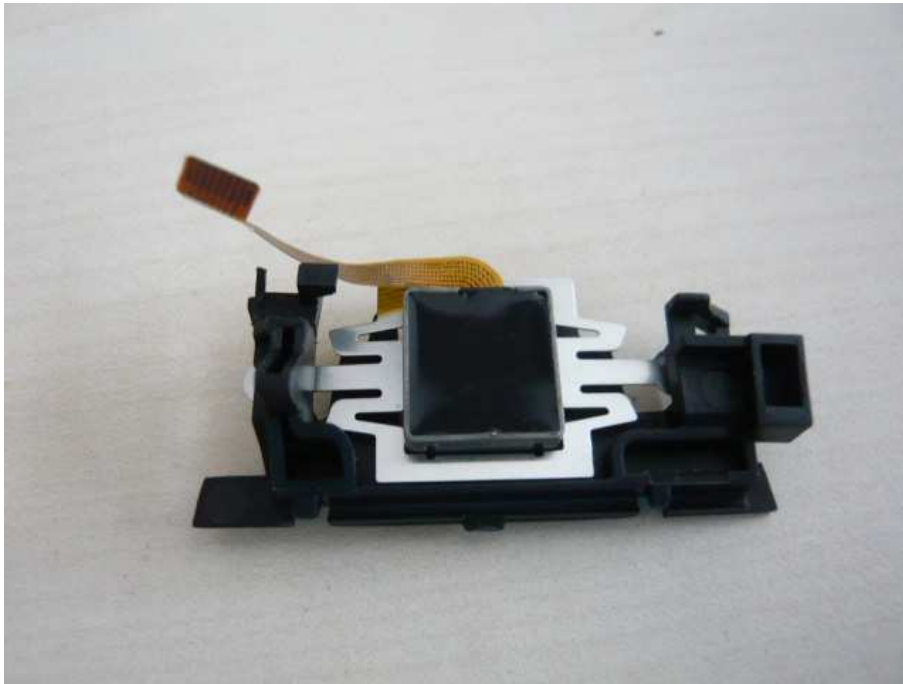
Detail views of display and keyboard





Detail views of display



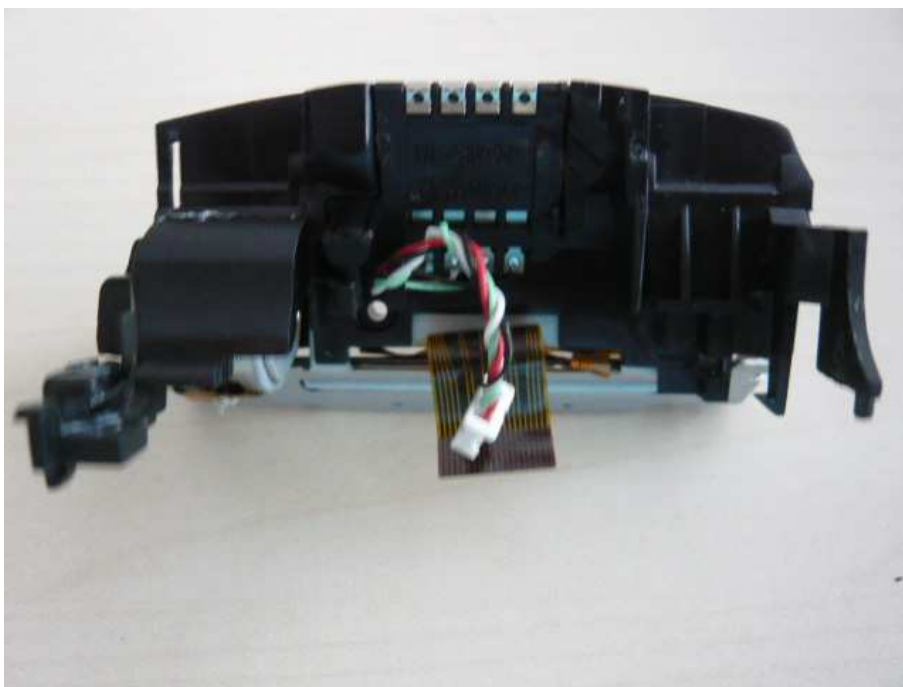


Detail views of magnetic reader





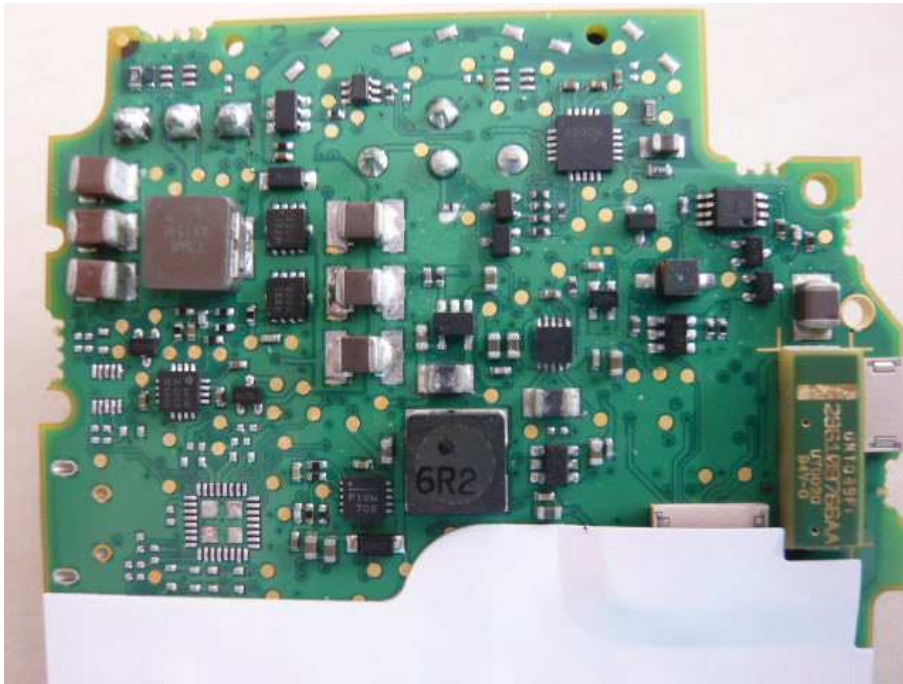
Detail views of printer





Detail views of PCB





Detail views of PCB



Detail views of PCB



Detail views of PCB

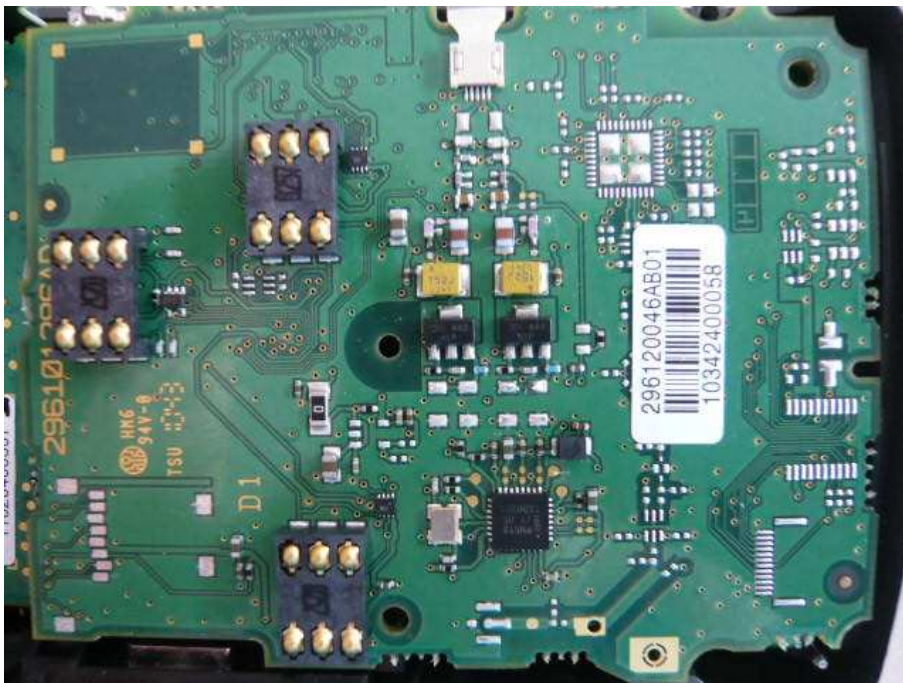


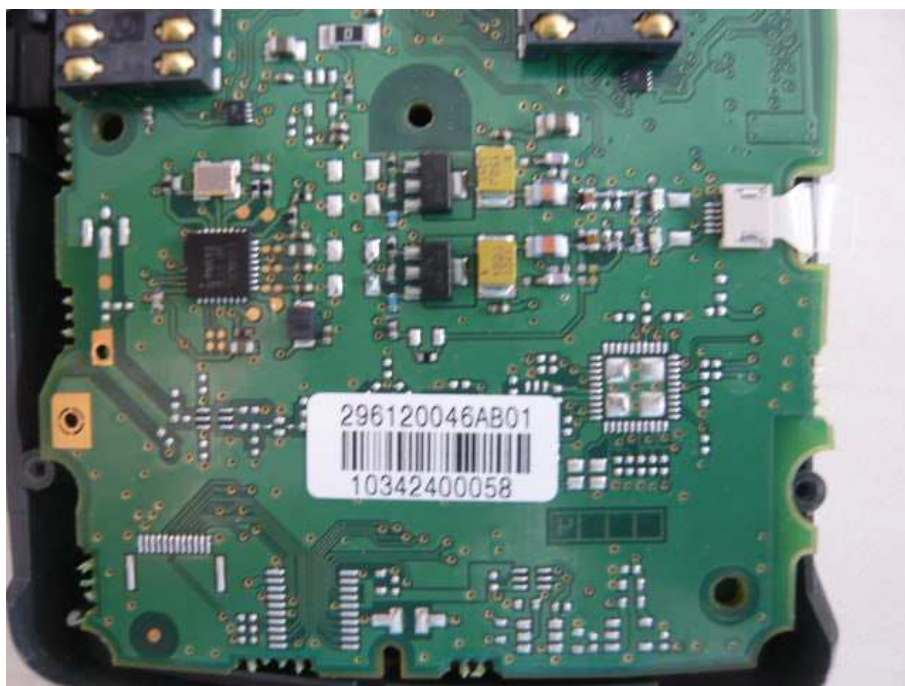
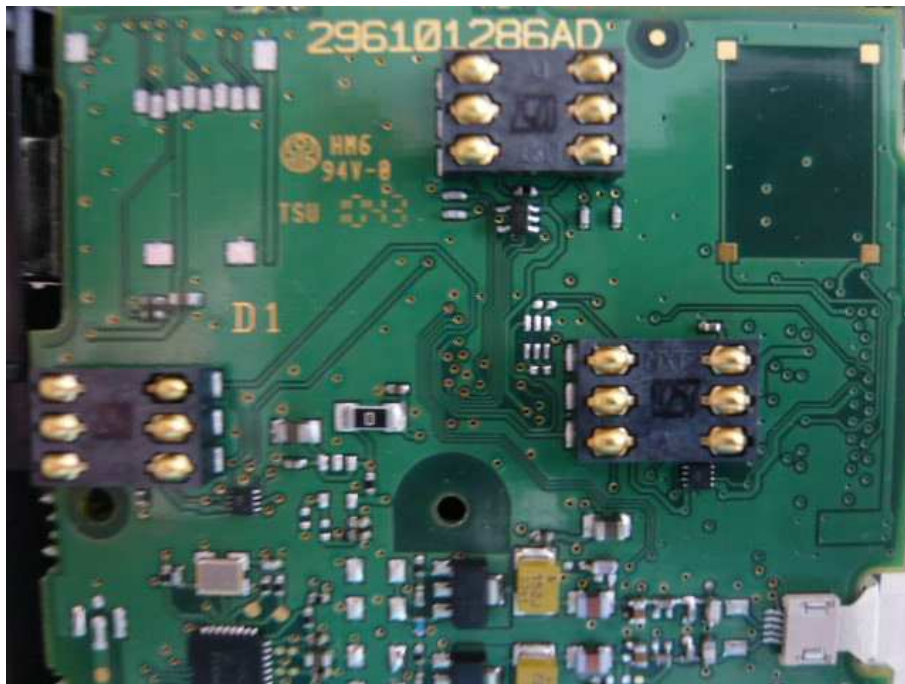
IWL221-01T1539A

Note: Only differences with IWL251-01T1541A are:

- None MicroSD reader
- Enclosure
- Display B&W

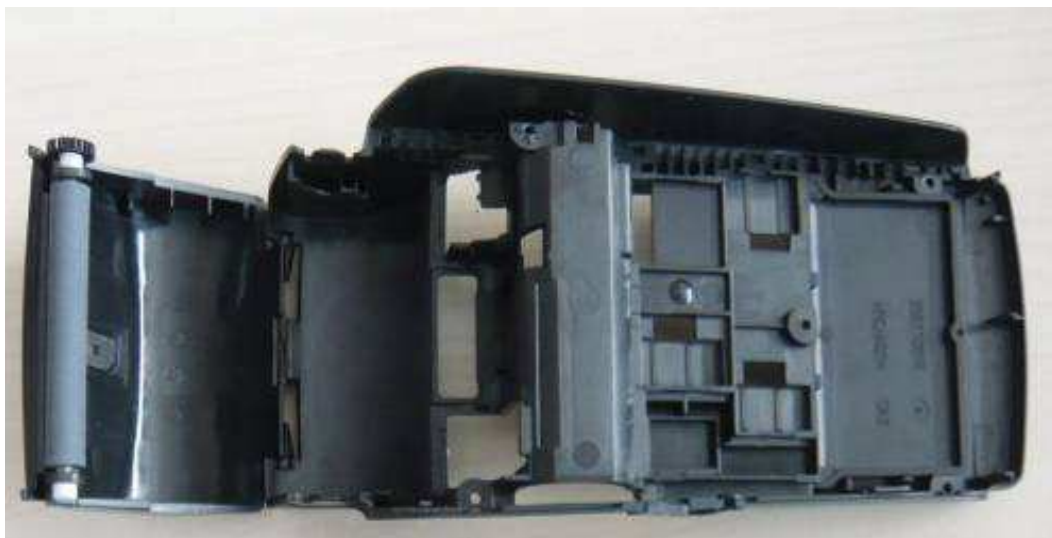
Here, photos of differences.







General views of enclosure





Detail view of display

