

ISMP3 - Internal pictures of the product.



Figure #1 : Battery pack location



Figure #2 : Iphone cover and Iphone holder



Figure #3 : Inf Cover removed

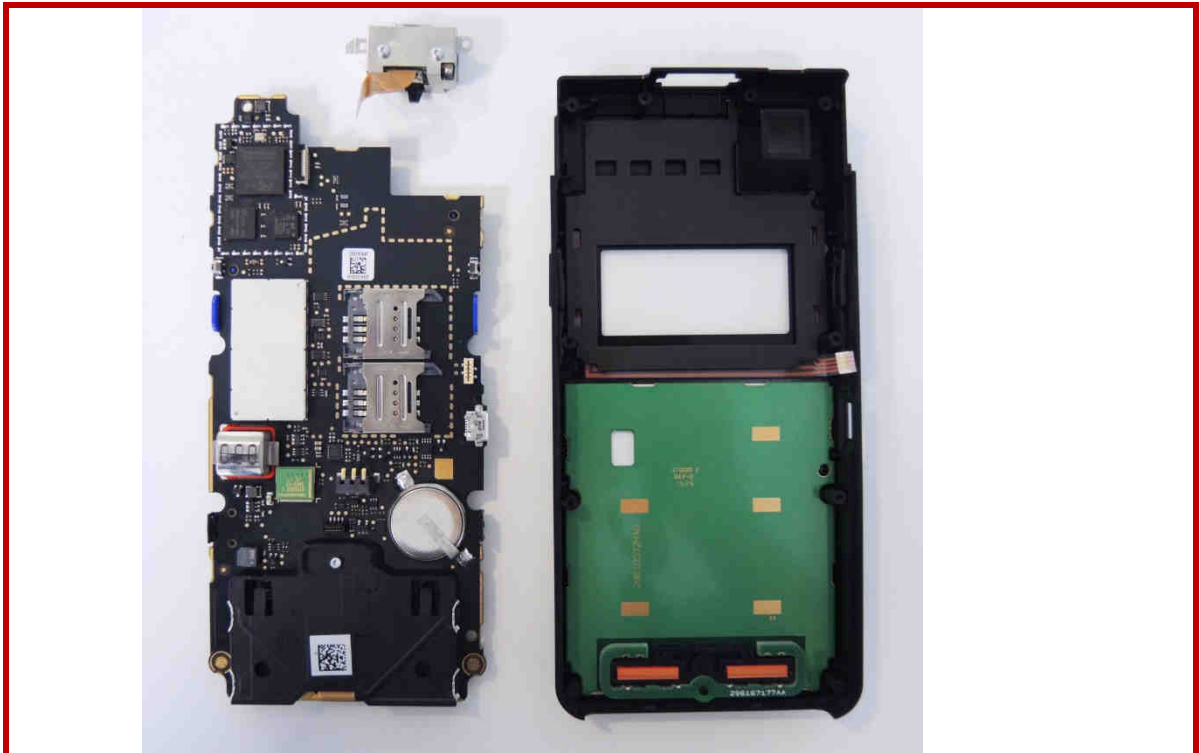


Figure #4 : Main board + Sup cover



Figure #5 : Main board (Top view)



Figure #6: Main Board (top view)

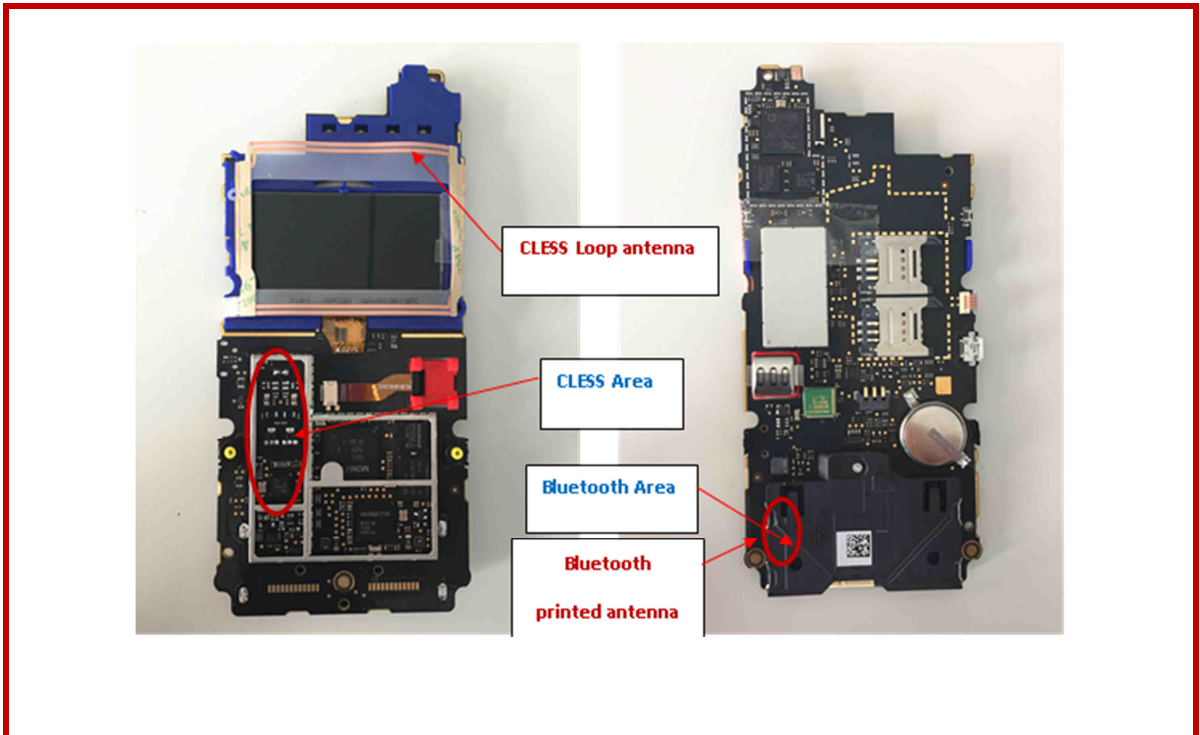


Figure #7 : Electronics on the Top & Bottom side of the pcb

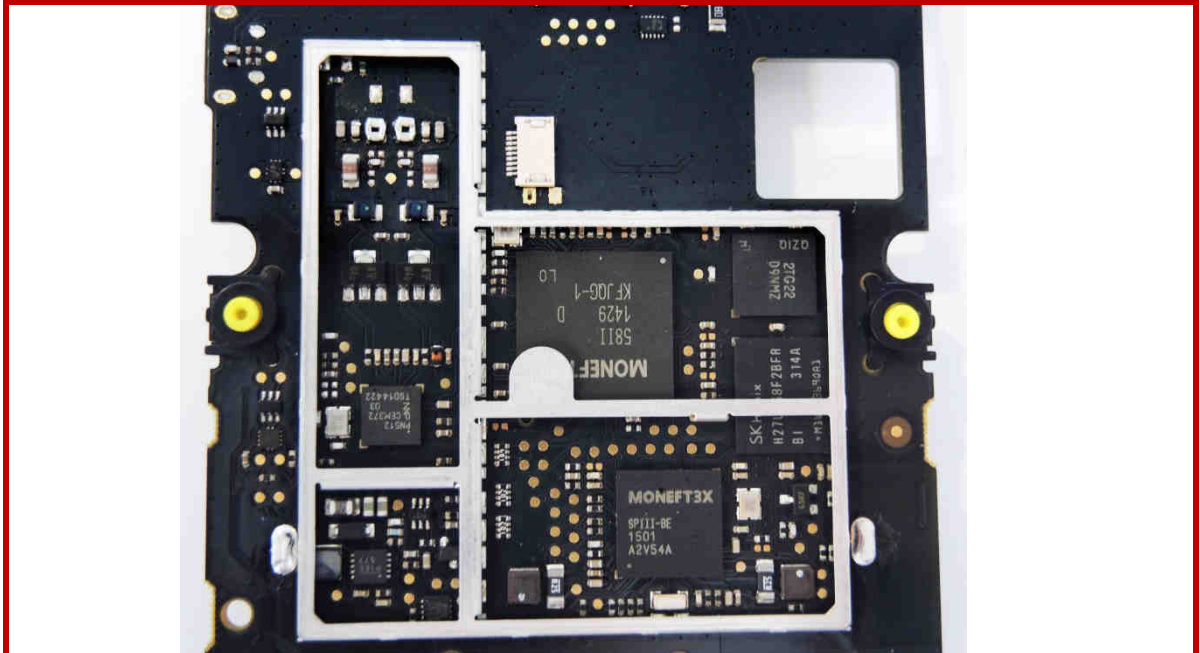


Figure #8 : Electronics on the Top side of the pcb

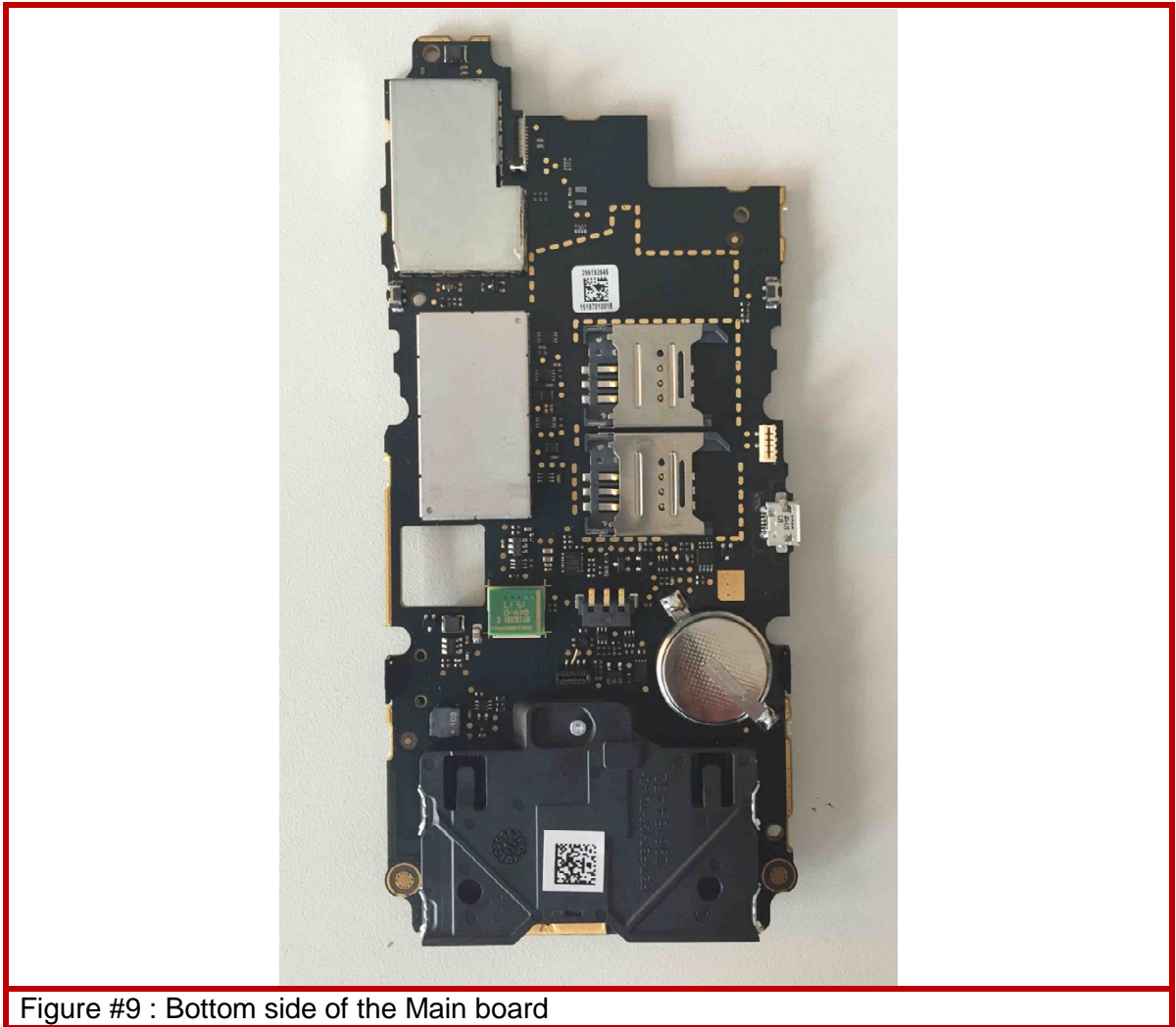


Figure #9 : Bottom side of the Main board



Figure #10 : Bottom side of the Main board

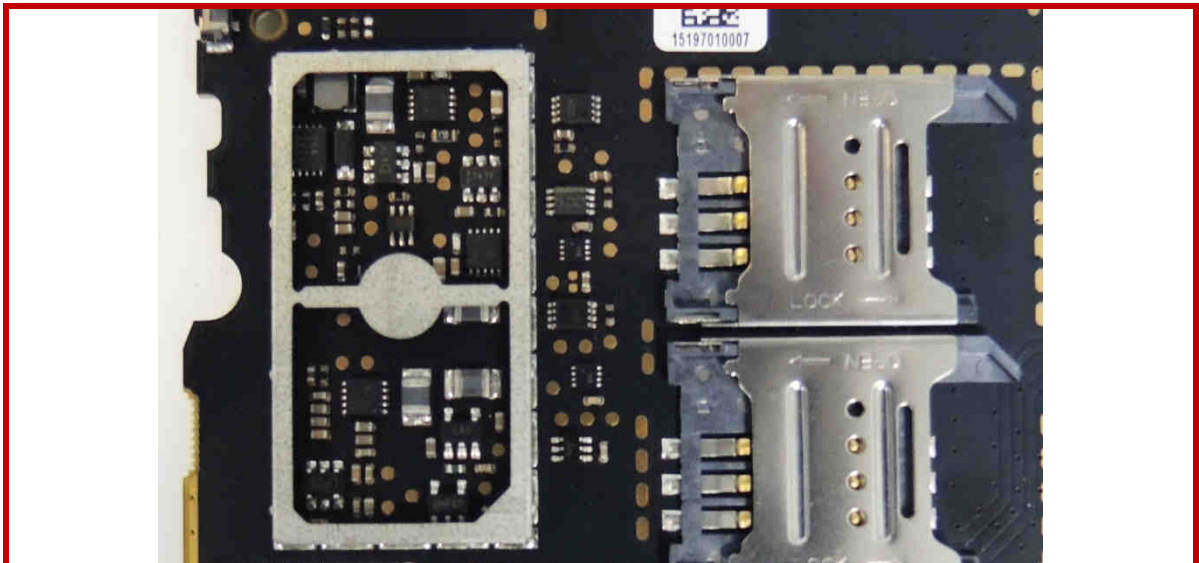


Figure #11 : Bottom side of the Main board : Power Management and 2 Secure Access Modules (or SAM)/

SAMs (Secure Access Module) are used to enhance the security and cryptography performances in the ISMP3 (in specific applications). Not to be confused with SIM

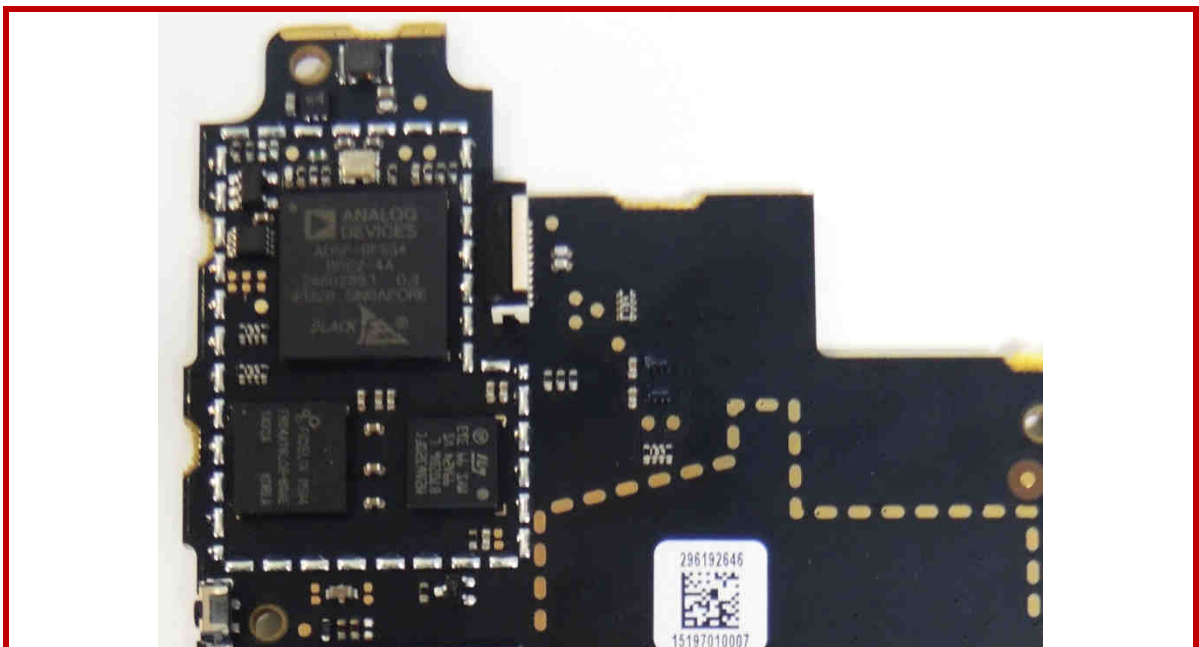


Figure #12 : Bottom side of the Main board : Barcode electronics

