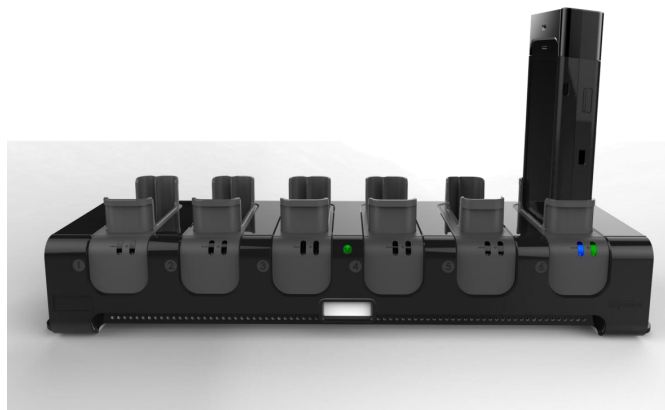


## Intelligent Docking Station for iSMP3

IMP400



# Contents

---

<b>1. Introduction</b>	<b>3</b>
<b>2. Unpacking</b>	<b>4</b>
<b>3. Recommendations</b>	<b>5</b>
3.1. Security	5
3.2. Approvals and markings	6
3.3. EC standard compliance	7
3.4. FCC and IC compliance	8
3.5. Main Characteristics	8
<b>4. Installation and connection</b>	<b>9</b>
4.1. Functional description	9
4.2. Connectivity	9
4.3. Positioning the cradle	9
4.4. Cables connection	10
4.5. Fixing the cradle on its support	11
4.6. iSMP Docking	11
4.7. Charging iSMP	12
<b>5. Maintenance</b>	<b>13</b>
5.1. Cleaning of the cradle	13
5.2. Transport and storage	13
5.3. Troubleshooting	13
5.4. Environment (WEEE, Batteries and Packaging)	14

# 1. Introduction

---

Thank you for choosing an Ingenico product.

We recommend you to read carefully this installation guide: It gives you the necessary information about safety precautions, unpacking, installation, and maintenance of your terminal accessory.



---

## WARRANTY / SECURITY

To benefit from the guarantee-related product, and to respect the security, we ask you to use only accessories delivered in box with the product, entrusting maintenance operations only to an authorized person.

The IMP400 accessory has been designed for iSMP3 product, do not attempt to use for any other use.

Failure to comply with these instructions will void the manufacturer's responsibility.

---



**This symbol indicates an important Warning.**

---



**This symbol indicates a piece of advice.**

---

## 2. Unpacking

---

### 2.1. Inside the Box

---

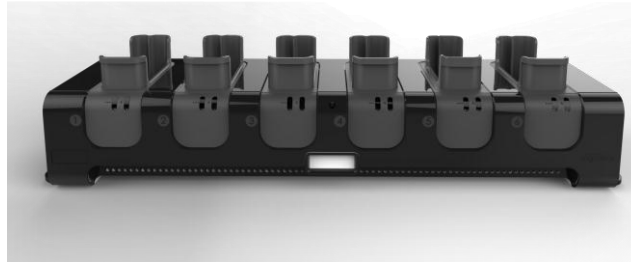


#### ADVICE

Carefully preserve the packaging of the IMP400. It must be re-used whenever the accessory is shipped.

---

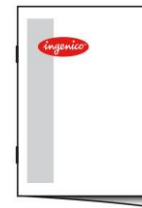
The following items are included in the IMP400 box:



*IMP400 Intelligent Docking Station for iSMP3*



*POWER SUPPLY UNIT (PSU)*



*This User guide*



#### WARNING

The power supply unit provided with your equipment is specially designed for Ingenico terminals. Do not use any other power supply. The use of a power supply with apparently similar voltage/current characteristics may damage your terminal.

---

## 2.2. Indicators on the IMP400

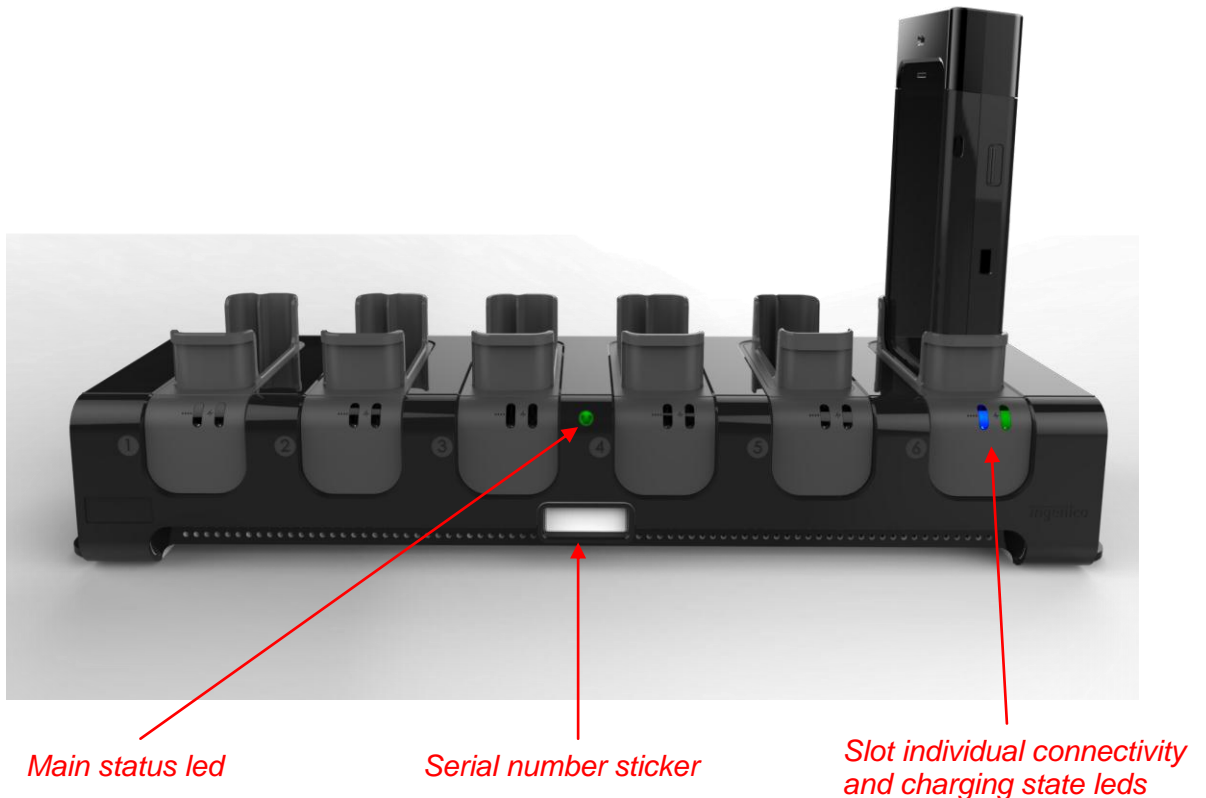
---

There are several indicators on the product, allowing the operator to quickly assess the state of the product, as well as the individual state of docked iSMP3's.

The main status LED indicates the state of the Docking Station.

The serial number sticker provides a unique identifier, allowing to discern a single Docking Station among the fleet.

Finally each slot's blue and green/red LEDs indicate the connectivity and charging state of each docked iSMP3.



## 3. Recommendations

---

### 3.1. Security

---

IMP400 is specially designed for iSMP3 terminals charging.

- Do not short-circuit the metallic contacts.
- Do not attempt to open the product or the PSU.
- Do not attempt to replace the PSU by any other type even the characteristics are similar.
- In case of abnormal behaviour disconnect the main power cord from the wall plug.

Electrical power outlet and power cord:

- Power outlet must be installed near the equipment and easily accessible;
- Main plug of power cord must meet standards and regulations of the country it is used in;
- The protection of the installation must be set to 20 A in US and Canada, 13 A in the UK and 16 A in other countries.



#### WARNING

In such case all the certifications below and warranty for iSMP3 and IMP400 would be voided

---

### 3.2. Approvals and markings

---



Mandatory conformity marking for products sold within the European Economic Area (EEA). It states that the product is assessed before being placed on the market and meets EU safety, health and environmental protection requirements



Indicates that the product has been certified to applicable standards including standards written or administered by the American National Standards Institute (ANSI), Underwriters Laboratories (UL), CSA Group (CSA), NSF International (NSF), and other North American and global organizations



Indicates that the product meet both American and Canadian standards for safety requirements



Indicates that the product has been evaluated, tested and certified for electrical safety by an independent accredited third-party against German and European standards



Mandatory mark for Japan according to the Electrical Appliance and Material Safety Law (DENAN)



Proof a regulated energy-using product imported into Canada has been successfully tested and certified by an impartial and independent Testing Laboratory accredited by the Standards Council of Canada (SCC)



Indicates a device's compliance with applicable Australian Communications and Media Authority (ACMA) technical standards—that is, for telecommunications, radio communications, EMC and EME



Indicates that the product has been tested against EMC and safety standards for Taiwan market



Compulsory safety mark for many products imported, sold or used in the Chinese market



Indicating a power supply meets the level V energy efficiency requirements.



Indicates that when the end-user wishes to discard this product, it must be sent to separate collection facilities for recovery and recycling



Indicates that the product is intended for indoor use only



Indicates that the product operates with a continuous voltage. This symbol is followed by the ratings (voltage and current for instance)

### 3.3. EC standard compliance

EC standard compliance marking certifies that the product stipulated below:

#### **iSMP3 associated to iMP400**

Conforms to the following harmonized standards:

- Safety standards:
  - EN 60950-1:2006/ A1:2010/A11 :2009/A12 :2011
  - IEC 60950-1 :2<sup>nd</sup> ed./A1:2009/A2 :2013
- EMC standards
  - EN 301 489-1 v1.9.2/ EN 301 489-17 v2.1.1
  - EN 55022:2006/A1:2007/EN 55024:2011
- Radio
  - ETSI EN 300 328 v1.8.1

The CE marking indicates IMP400 complies with the requirements of European Directive 1999/5/EC of 9 March 1999 on Radio and Telecommunications Terminal Equipment for:

- The protection of the health and the safety of the user and any other person.
- The protection requirements with respect to electromagnetic compatibility.

And complies with harmonised standards listed above.

### 3.4. FCC and IC compliance

---

This product is registered to the Federal Communication Commission under reference: **FCCID: XKB-IMP403.**

Compliance Statements:

**FCC:**

*NOTE: This equipment has been tested and found to comply with the limits for a Class B digital device, pursuant to part 15 of the FCC Rules. These limits are designed to provide reasonable protection against harmful interference in a residential installation. This equipment generates, uses and can radiate radio frequency energy and, if not installed and used in accordance with the instruction, may cause harmful interference to radio communications. However, there is no guarantee that interference will not occur in a particular installation. If this equipment does cause harmful interference to radio or television reception which can be determined by turning the equipment off and on, the user is encouraged to try to correct interference by one or more of the following measures:*

- Reorient or relocate the receiving antenna.
- Increase the separation between the equipment and receiver.
- Connect the equipment into an outlet on circuit different from that to which the receiver is connected.
- Consult the dealer or an experienced radio/TV technician for help.

*This device complies with Part 15 of the FCC Rules. Operation is subject to the following two conditions: (1) this device may not cause harmful interference, and (2) this device must accept any interference received, including interference that may cause undesired operation.*

**IC:**

*This class (B) digital apparatus complies with Canadian ICES-003.*

### 3.5. Main Characteristics

---

The main technical characteristics of the Intelligent Docking Station are:

<b>Mass</b>	940 g
<b>Dimensions (LxHxh)</b>	400x122x88 mm
<b>Electrical mains network</b>	100-240VAC / 50-60 Hz - Class I
<b>PSU Models</b>	Ingenico ref:296177532-12Vdc/6.67A max

**Operating conditions**

<b>Ambient temperature</b>	-10°C to +45°C
<b>Max relative humidity</b>	85% at +45°C
<b>Connections for terminal</b>	6 x 4 poles sockets – 5Vdc/2A each slot

**Storage conditions**

<b>Storage temperature</b>	-20°C,+70°C
<b>Max relative humidity</b>	85% at +70°C



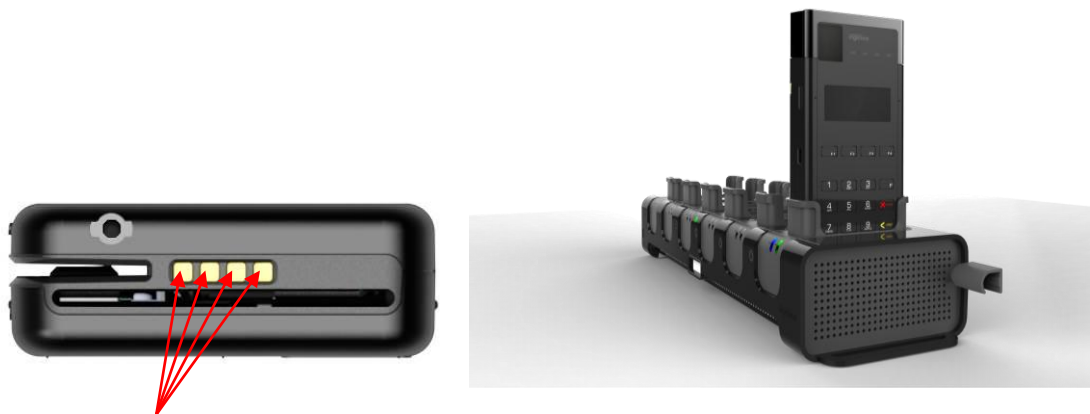
## 4. Installation and connection

---

### 4.1. Functional description

---

The IMP400 is an Intelligent Docking Station (iDS) accessory for iSMP3 terminal. For each of 6 iSMP3 it provides both a 5V 2A power source able to supply the iSMP3 and associated iPhone6, and connectivity between the iSMP3 and the monitoring PC or server.



*Charging and data pads used with charging dock  
(Bottom view)*

### 4.2. Connectivity

---

The IMP400 possesses:

- 2 RJ45 Ethernet sockets compatible with 10/100Base-T/TX Ethernet.
- 1 4 pts Power DIN current inlet to connect the power supply
- 1 USB type B socket for maintenance purposes only
- 6 x 4 poles cradle to receive iSMP3 product, with 5Vdc/2A power outlet and USB connectivity

### 4.3. Positioning the cradle

---

Install the IMP400 on a flat surface, with an easy access to an electrical outlet. Place the IMP400 away from any heat source and protected from dust, vibrations and electromagnetic radiations (away from video terminals, PC, anti-shoplifting barriers ...). Do not place the IMP400 in direct light from the sun.

## 4.4. Cables connection

---



### **WARNING**

**Connect all data cables to the device BEFORE plugging the PSU into the power outlet.**

---

- Plug the Power Jack
- Plug the first Ethernet connector. Pass the cable under the Power Jack, and clip it into the cable guide.
- If needed, plug the second Ethernet connector and clip the cable in the other cable guide, on the other side of the product.



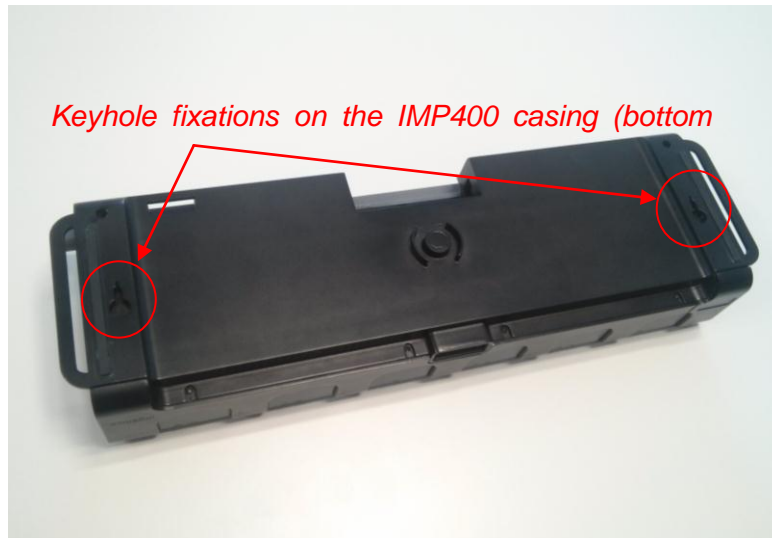
*IMP400 ready to operate*

- Put the IMP400 in place, and finally plug the PSU into the power outlet

## 4.5. Fixing the cradle on its support

---

The IMP400 is equipped with keyholes fixations on the bottom in order to fix it to its support, if need be.



*Location of the keyhole fixations*

The center distance between the two fixations is 340mm.

Mounting instructions:

- Place 2 screws or other fixing devices 340mm from each other, on the intended support of the IMP400.
- Align the widest part of each keyhole with the corresponding screw, and lower on the support.
- Slide it in place by gently pulling towards you until each screw reaches the end of the keyhole.

## 4.6. iSMP3 Docking

---

- Before docking the iSMP3, verify that the IMP400 is up and running. The main LED should be lit green to indicate so.
- Hold the iSMP3 over one of the docking slots, and lower gently into the slot, without dropping it.
- The guide located in the slot is intended to slide into the Swipe Card Reader.
- Once docked, the LEDs on the slot will light up. The charging LED will be Red or Green depending on the charge level of the device. The blue LED will blink while communication with the device is initialized.
- Once the blue LED is lit solid, the iSMP3 is successfully docked and can be left to charge and synchronize.

## 4.7. Charging iSMP

---

- Charging iSMP3 start as soon as iSMP3 is inserted into the cradle
- Charging operation can be monitored on iSMP3 terminal or through LED indicators



---

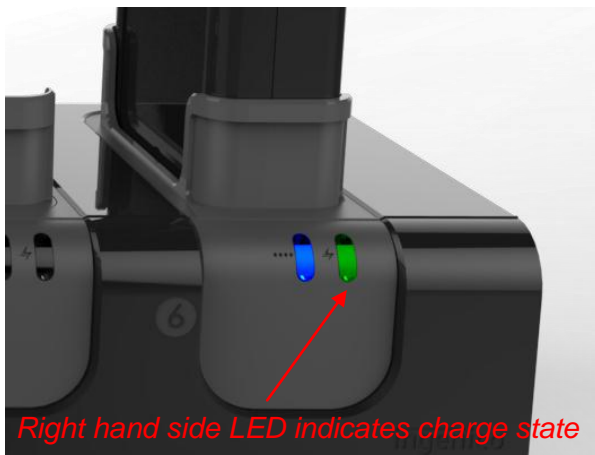
### ADVICE

Before using iSMP3 for the first time, charge it for about 4 hours

After that, approximate charging time is 3 hours to recharge the battery to full capacity

---

LED indicators:



- Red: in charge
- Green: charged

A battery indicator is provided on the iSMP3 screen further indicates the charge of the product.



## 5. Maintenance

---



### **WARNING**

**Before making any operations of maintenance in the terminal, make sure that power supply is disconnected.**

---

### 5.1. Cleaning of the cradle

---

First of all, unplug all the wires from the terminal.

Good rules for proper cleaning of the terminal are:

- Use a soft cloth that is very slightly soaked with soapy water to clean the outside of the cradle.
- Do not clean the electrical connections.
- Do not use in any case, solvents, detergents or abrasive products: Those materials might damage the plastic or electrical contacts.
- Avoid exposing the cradle to the direct rays of the sun.

### 5.2. Transport and storage

---

- Use the original packaging for any unit or stored.

### 5.3. Troubleshooting

---

The terminal does not turn on when inserted into slot or the blue LED does not light up upon docking:

- Battery level is too low. Wait for the terminal to charge up and start before connectivity can be established.
- Check the PSU connections
- Check for iSMP positioning into the slot
- Check for electrical power network

## 5.4.Environment (WEEE, Batteries and Packaging)

---

This product is labeled in accordance with European Directives 2002/96/EC concerning Waste Electrical and Electronic Equipment (WEEE) and 2006/66/EC concerning Batteries and Accumulators. Those provisions are requiring producers and manufacturers to become liable for take-back, treatment and recycling upon end of life of equipment and batteries.



The associated symbol means that WEEE and waste batteries must not be thrown away but collected separately and recycled.

Ingenico ensures that efficient collection and recycling schemes are set-up for WEEE and batteries according to the local regulation of your country. Please contact your retailers for more detailed information about the compliance solution in place for disposing of your old product and used batteries.

Packaging waste must also be collected separately to assure a proper disposal and recycling.

Please note that proper recycling of the electrical and electronic equipment and waste batteries will ensure safety of human health and environment.

“This Document is Copyright © 2015 by INGENICO Group. INGENICO retains full copyright ownership, rights and protection in all material contained in this document. The recipient can receive this document on the condition that he will keep the document confidential and will not use its contents in any form or by any means, except as agreed beforehand, without the prior written permission of INGENICO. Moreover, nobody is authorized to place this document at the disposal of any third party without the prior written permission of INGENICO. If such permission is granted, it will be subject to the condition that the recipient ensures that any other recipient of this document, or information contained therein, is held responsible to INGENICO for the confidentiality of that information.

Care has been taken to ensure that the content of this document is as accurate as possible. INGENICO however declines any responsibility for inaccurate, incomplete or outdated information. The contents of this document may change from time to time without prior notice, and do not create, specify, modify or replace any new or prior contractual obligations agreed upon in writing between INGENICO and the user.

INGENICO is not responsible for any use of this device, which would be non consistent with the present document.

All trademarks used in this document remain the property of their rightful owners.”

iPhone6 is a trademark of Apple, Inc., registered in the U.S. and other countries.

Your contact

Ingenico – 28-32 Boulevard de Grenelle  
75015 PARIS  
Tél. 33(0)1 58 01 80 00 - Fax 33 (0)1 58 01 91 35  
[www.ingenico.com](http://www.ingenico.com)

\*296192