

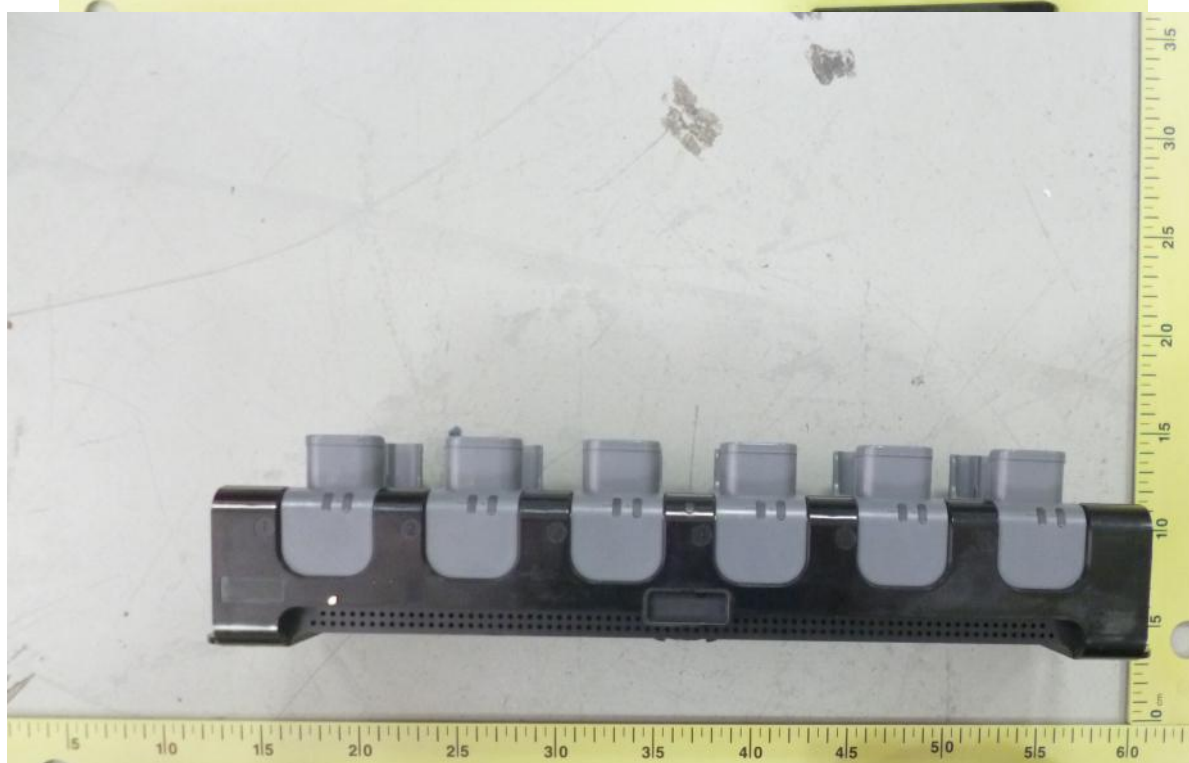
EXTERNAL PHOTOS OF EQUIPMENT

FCCID: XKB-IMP403





LCIE





LCIE





LCIE



Order No.:
GS90A12-R7BBM

AC/DC SWITCHING ADAPTOR (电源适配器) (电源适配器)
 MODEL NO.(型号)(输入): GS90A12
 INPUT(输入)(输入): 100-240VAC, 50/60Hz, 2.0A
 OUTPUT(输出)(输出): 12V = 0.67A, 80W MAX.

This device complies with Part 15 of the FCC Rules. Operation is subject to the following two conditions: (1) This device may not cause harmful interference, and (2) this device must accept any interference received, including interference that may cause undesired operation.

MEAN WELL ENTERPRISES CO., LTD.
 No. 28, Wuquan 3rd Rd., Wugu Dist.,
 New Taipei City 24891, Taiwan (R.O.C.)

CAUTION (警告)
DO NOT OPEN RISK OF ELECTRIC SHOCK
 Öffnen Sie niemals das Gerät. Das Gerät darf
 aus Gründen der elektrischen Sicherheit nur von
 autorisiertem Servicepersonal geöffnet werden.
 (为避免电击危险请勿随意拆卸本产品)
 (为避免电击危险请勿随意拆卸本产品)

ATTENTION:
 RISQUE DE CHOC ELECTRIQUE NE PAS OUVRIER
 S/N: 45452539

MADE IN CHINA (中国制造) (中国制造) MW02

GS90A12-R7BBM1

