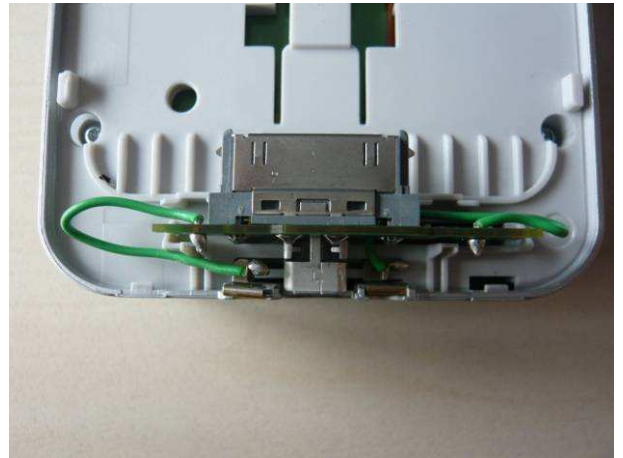
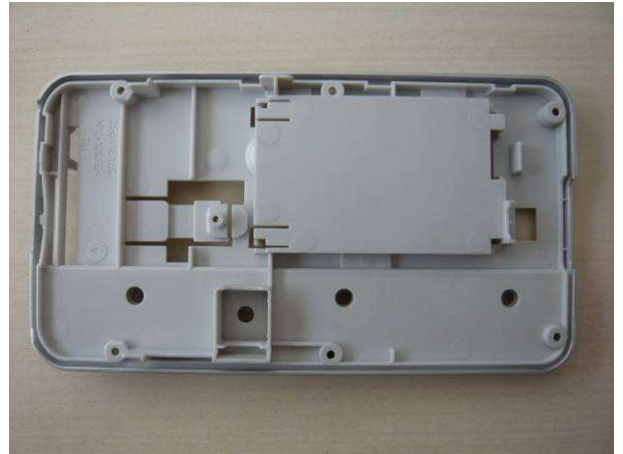


INTERNAL PHOTOS OF TESTED EUT

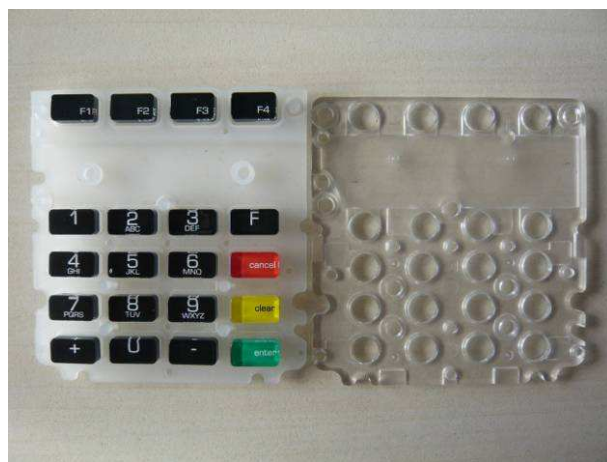


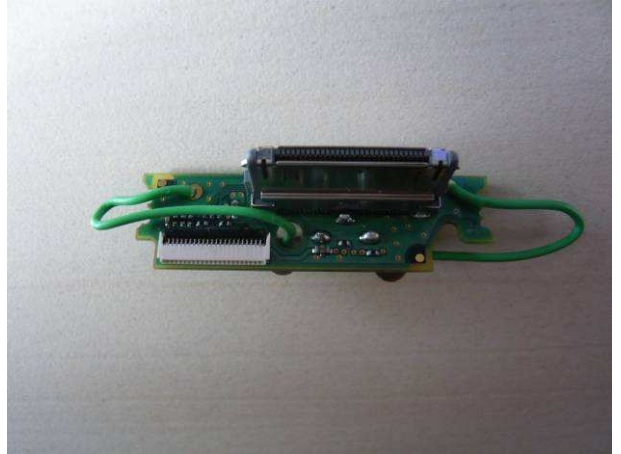
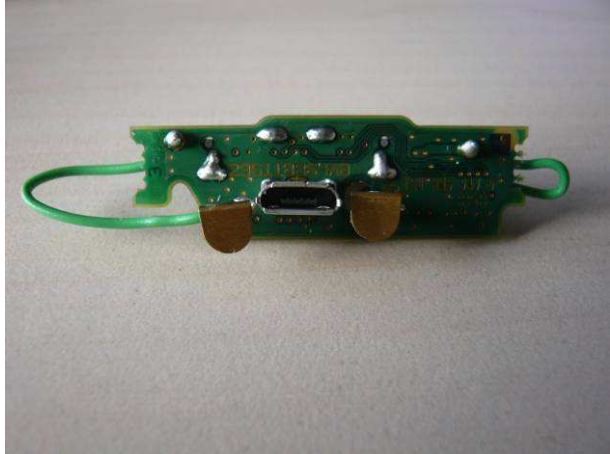
General views of enclosure



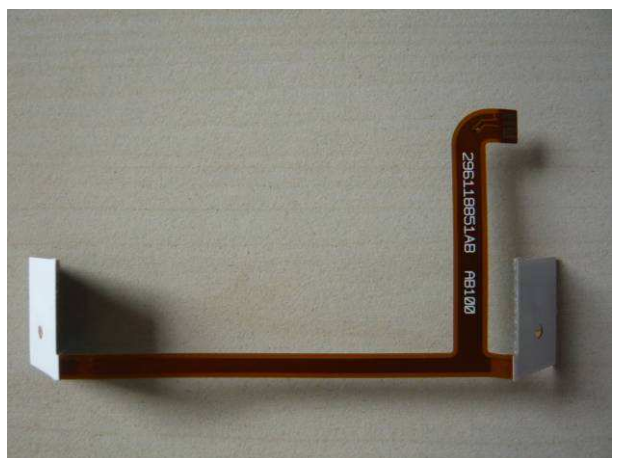
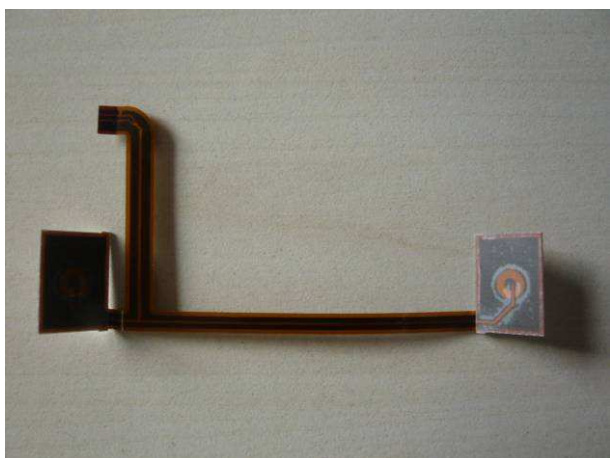


General views of "IPOD touch" casing





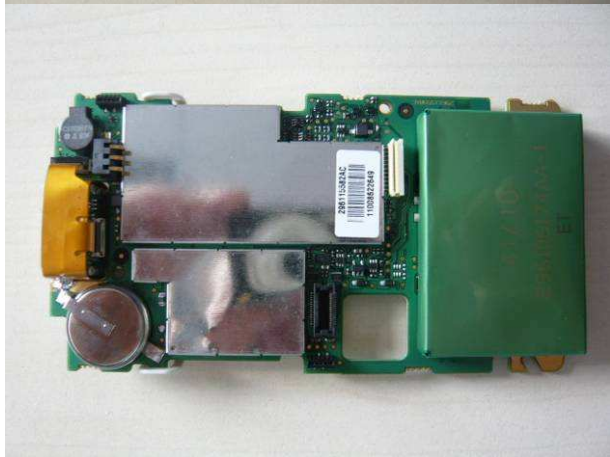
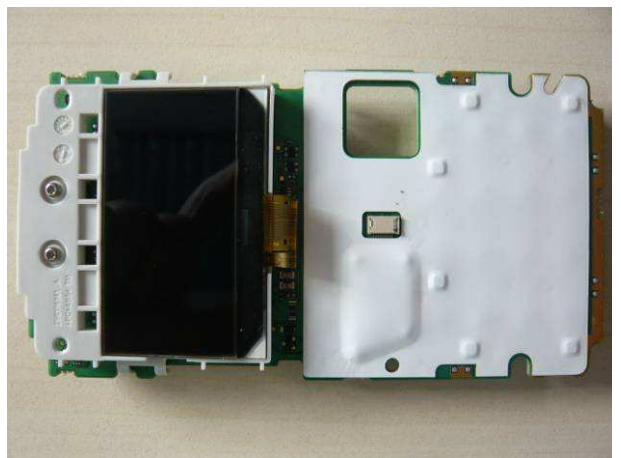
Views of IPOD TOUCH dock



Views of barcode button



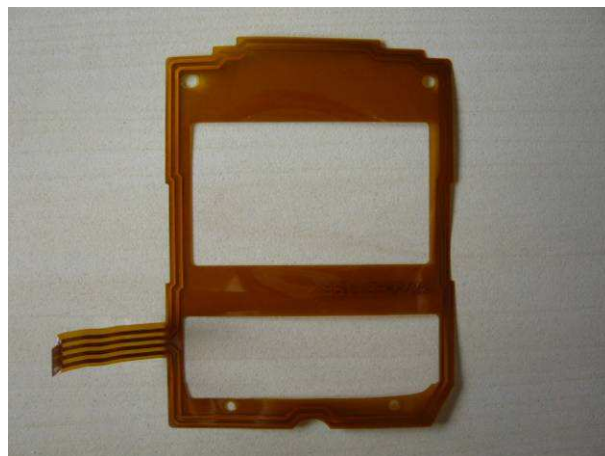
Views of magnetic card



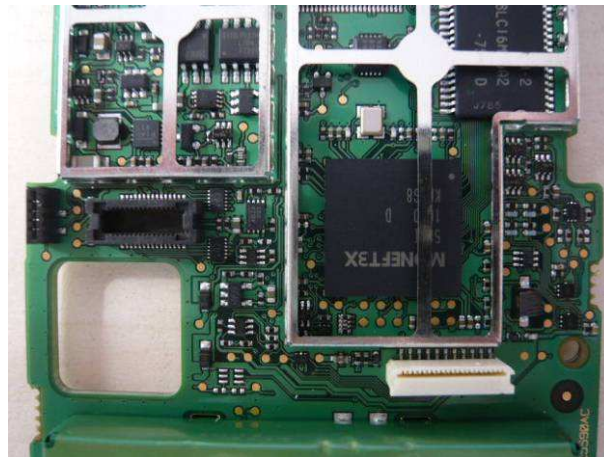
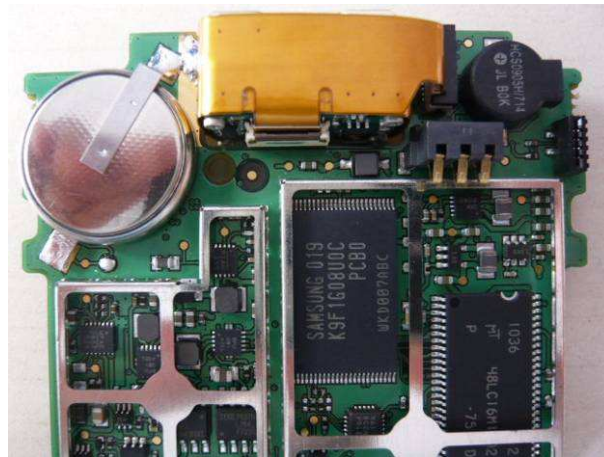
Views of PCB



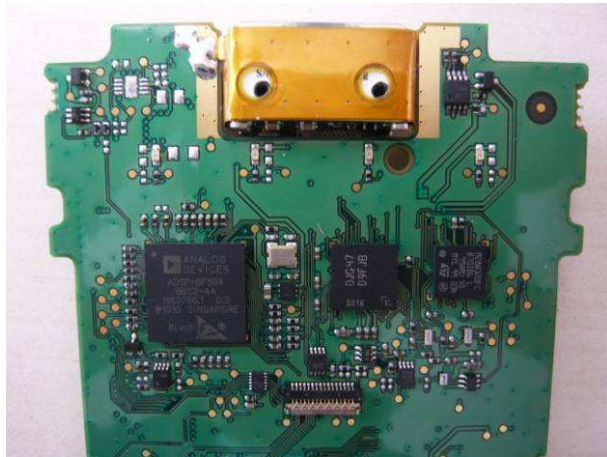
Detail views of screener



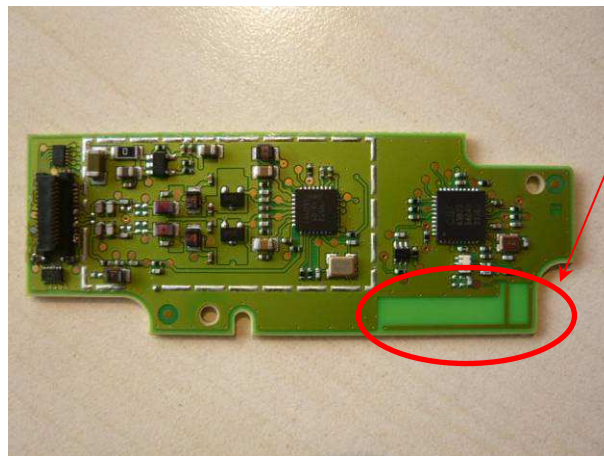
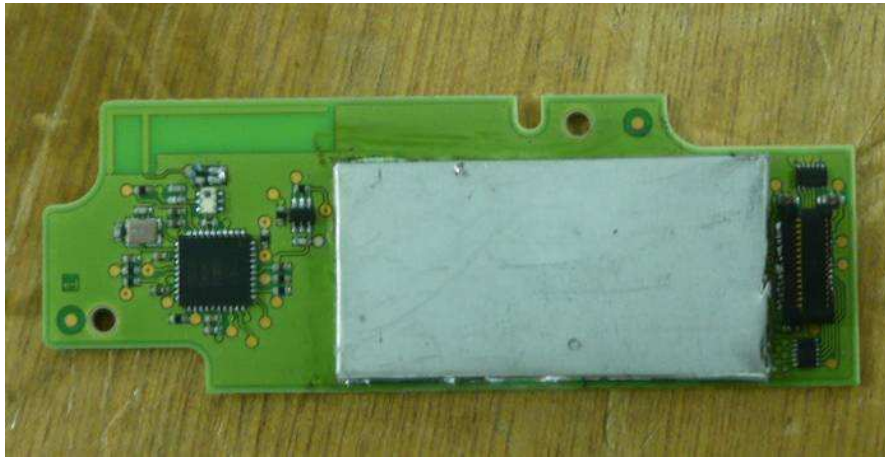
View of RFID antenna



Detail views of PCB



Detail views of PCB



Bluetooth
Antenna



Details views of RF PCB with an without shield (RFID)