



Model: AXIUM EX6000



User Guide

WWW.ingenico.com

28-32, Boulevard de Grenelle, 75015 PARIS - FRANCE/ (T)+33(0)1 58 01 80 00 / (F)+33 (0)1 58 01 91 35
Ingenico-SA au capital de 47 656 332 / 317 218 758 RCS Nanterre

Contents

1. Introduction	3
2. Presentation	4
2.1 Content of the box	4
2.2 Overview of AXIUM EX6000	5
2.3 Keypad Functions	6
2.4 Touch Panel	7
3. Use of the terminal	7
3.1 Power on/Power off the terminal	7
3.2 Reading cards	8
3.3 Usage of Front scanner	9
3.4 USB type-C	10
4. Installation	10
4.1 Recommendations	11
4.2 Installing modules	11
4.3 Battery	13
4.4 Visual Impaired Accessory	14
5. Recommendations	15
5.1 Safety	15
5.2 Security of your terminal	18
5.3 Fixed installation	19
5.4 Cleaning the terminal	20
5.5 Transport and storage	20
6. Standard	21
7. Troubleshooting	23

1. Introduction

We hope that you will be fully satisfied with your new AXIUM EX6000 terminal. Read this guide to understand and make the best use of your terminal. It presents you the necessary information about use, installation, maintenance, safety and security recommendations.



WARRANTY/SECURITY/GARANTIE/SÉCURITÉ

Use only the power supply included with the product to ensure best performance and safety. Maintenance should only be provided by Ingenico authorized technician.

Failure to comply with these instructions will void the manufacturer's responsibility.

Afin d'assurer les meilleures performances et votre sécurité, utiliser seulement le bloc d'alimentation livré par le fabricant avec le produit. La maintenance doit être réalisée seulement par un technicien agréé et autorisé par Ingenico.

Le non-respect de ces instructions dégage la responsabilité du fabricant.



This symbol indicates an important Warning.

Ce symbole indique un avertissement important.



This symbol indicates a piece of advice.

2. Presentation

2.1 Content of the box

- AXIUM EX6000 terminal
- Power adapter
- Abattery pack
- This user guide

WARNING/ATTENTION



The power supply unit provided with your equipment is specially designed for ingenicoAXIUM EX6000 terminal. Do not use any other power supply. The use of a power supply with apparently similar voltage/current characteristics may damage your terminal.

Le bloc d'alimentation fourni avec votre équipement est spécialement conçu pour les terminaux de paiement Ingenico. Ne pas utiliser d'autres sources d'alimentation. L'utilisation d'une alimentation électrique ayant des tensions et courant similaires peut endommager votre équipement.

ADVICE



Keep the package. It must be re-used whenever the terminal is shipped.

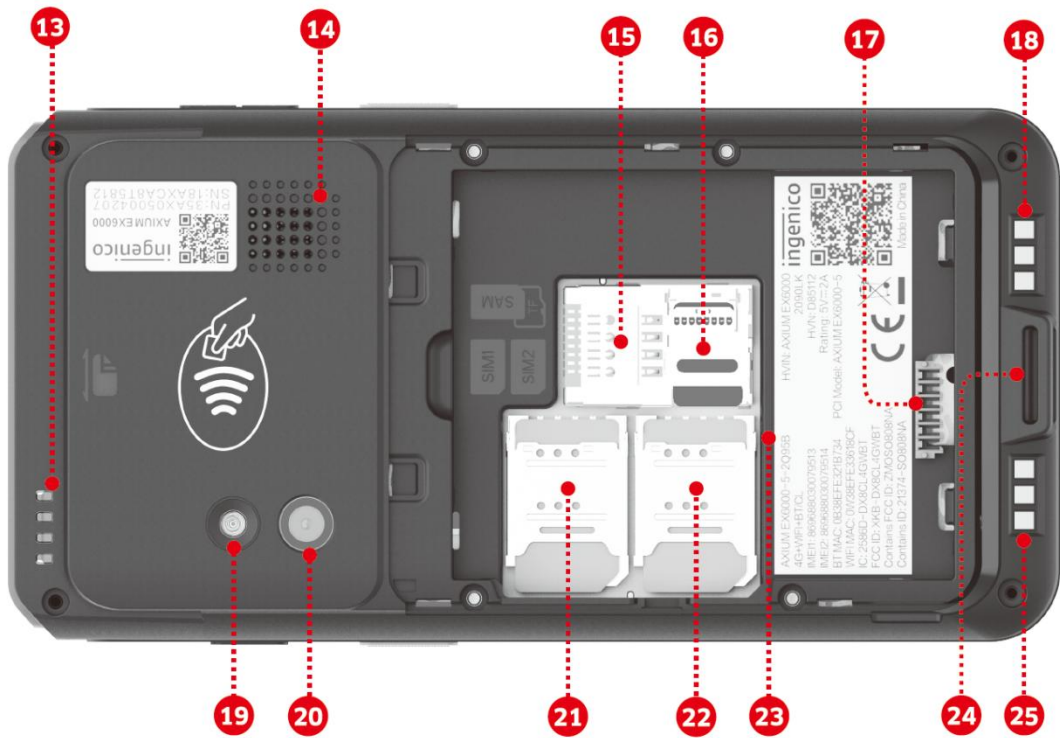
2.2 Overview of AXIUM EX6000

1. Volume Keys
2. Scan Key
3. LCD and touch screen
- 4.USB Type-C connector
- 5.Smart card reader



6. Indicate LED of front scanner
7. Front scanner
8. Illuminate lamp of front scanner
- 9.Magnetic card reader
- 10.Contactless landing zone
- 11.Power Key
12. Scan Key





- 13. LEDs for Contactless Card
- 14. Speaker
- 15. SAM card slot
- 16. Micro SD slot
- 17. Battery socket
- 18. Base Charging interface-
- 19. Flash
- 20. Rear camera
- 21. SIM 1 card slot
- 22. SIM 2 card slot
- 23. Battery compartment
- 24. Lanyard hole
- 25. Base Charging interface+

Weight	261g (including battery)
Dimension (L x W x H)	152.2 X 77.1 X 17.5mm
Electrical mains network	100-240VAC/50-60Hz Class II

2.3 Keypad Functions

The terminal has three physical keys on the left side of the terminal, a power button and two volume keys.

The terminal has a 5.0 inch screen, there are three capacitive keys at the bottom of the screen, Menu, Home and Back keys.



2.4 Touch Panel

The AXIUM EX6000 is equipped with touch panel that allows you capture functions and menus by your finger or use a stylus.

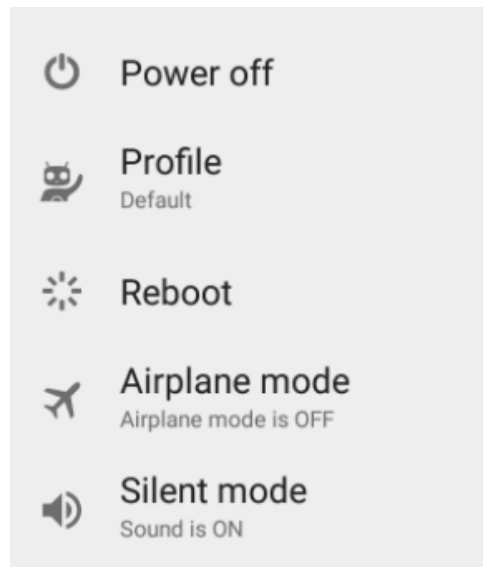
3. Use of the terminal

3.1 Power on/Power off the terminal

To power on: Make sure the terminal battery is correctly installed and Press <Power>

button for about 1s until the display is turned up.

To power off: Press <Power> button for more than 2s until the display show the following figure, then press <Power off>.



If the battery is empty, the terminal automatically shuts off.

Abnormal power off:

When the device works abnormally, for example, it is crashed and no actions menu popped out while pressing the power button, please long-press the power button for 8s, the device will be automatically powered off.

Screen saver mode:

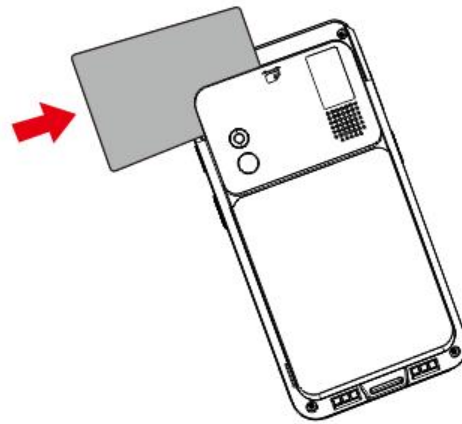
Short-press the power button for about 0.5s, the terminal display will be turned on or off.

3.2 Reading cards

Magnetic stripe card

The card can be read bi-directionally, with the stripe facing the terminal.

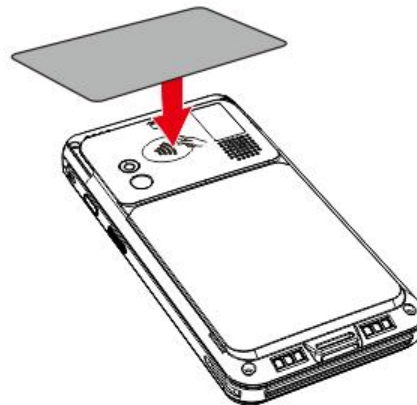
Use a regular movement in order to ensure a reliable card reading.



Contactless card

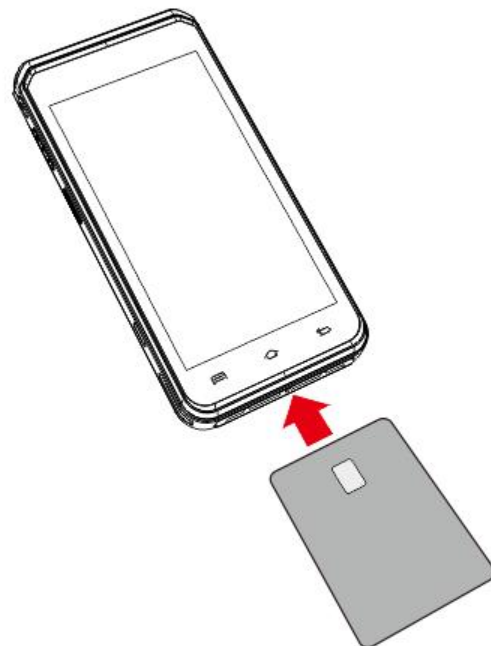
Bring the card firmly up to the active zone. Keep the card close to the reader during the transaction.

On the back ,LEDs are displayed to indicate transaction processing.



Smart card

Insert the card horizontally with the metal chip facing upward and leave in position throughout the transaction.

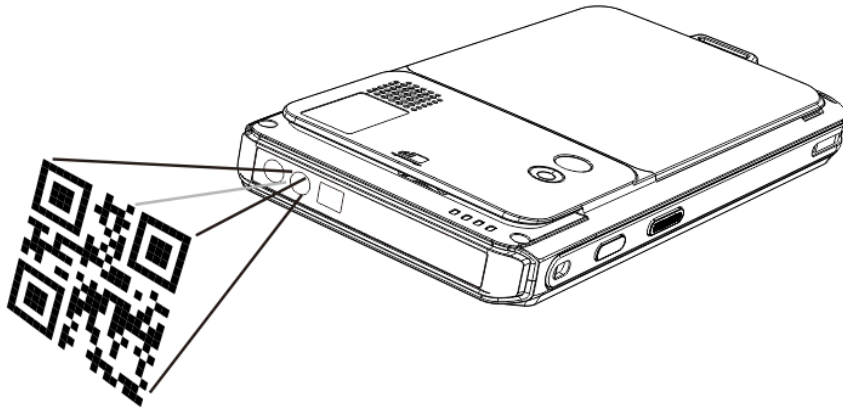


3.3 Usage of Front scanner

➤ Press the scan button to start

scanning.

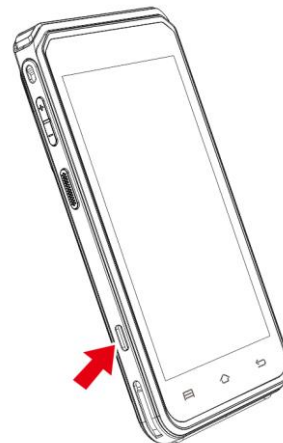
- After starting the barcode scanning, a red laser beam will be emitted from the window in front of the terminal.
- Align the red light beam with the bar code you want to scan
- When the scan is successful, the terminal will automatically turn off the beam and sound a beep.



3.4 USB type-C

There is a USB type-C connector on the left side of terminal.

The connector manages Host and Slave connections.
The connector integrates Audio Jack solution.



the

4. Installation

4.1 Recommendations

Operating conditions

Ambient temperature*	From -10 °C to +50 °C
Max relative humidity	From 10%to 90%, Non-condensing

(*Excluding battery charging)

Battery charging conditions

Ambient temperature	From 0 °C to +40 °C
---------------------	---------------------

Storage conditions

Ambient temperature	From -20 °Cto +70 °C
Max relative humidity	From 5% to 90%, Non-condensing

4.2 Installing modules

4.2.1 SAM/SIM1/SIM2



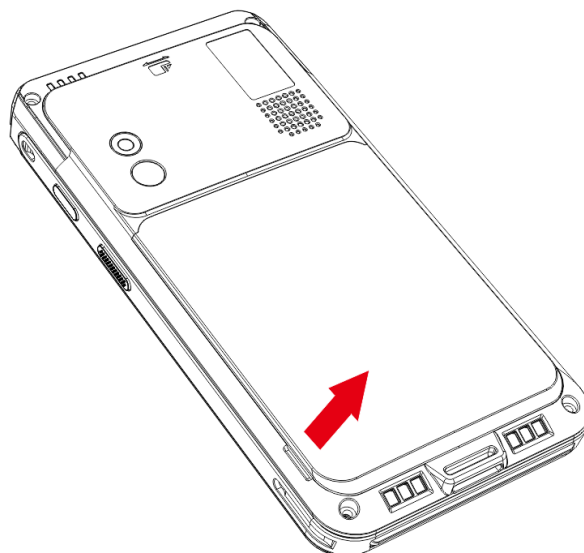
WARNING/ATTENTION

Switch off the terminal before opening the trapdoor.

Mettre hors tension le terminal avant d'ouvrir la trappe.

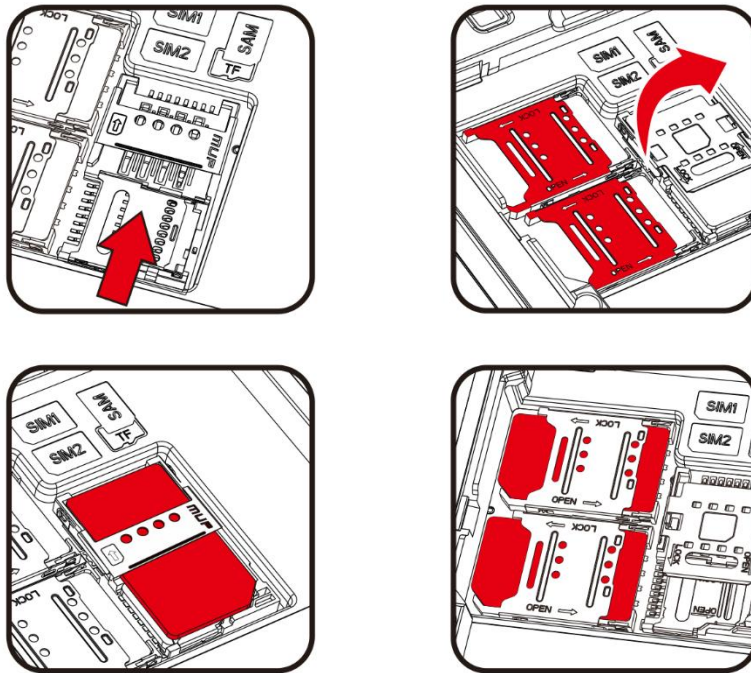
The SAM/SIM connectors are located inside the terminal, in a closed compartment.

- Turn the terminal and remove the trapdoor.



- SAM and SIM1,SIM2 are identified by the engraved marks on the lower housing.

-
- When introducing a SAM/SIM in its slot, be sure to put the cut corner as indicated on the picture.



- Close the trapdoor.



ADVICE

SIM and SAM cards share the same form factor , please do be careful to the SIM card socket position.

4.2.2 MicroSD Memory Card



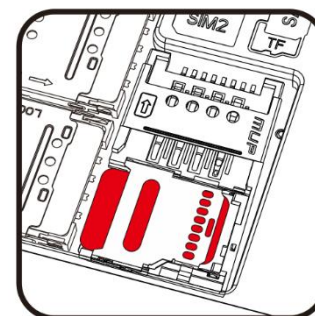
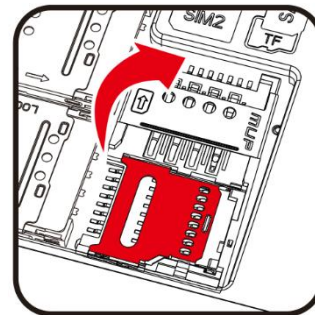
WARNING/ATTENTION

Switch off the terminal before opening the trapdoor.
Mettre hors tension le terminal avant d'ouvrir la trappe.

MicroSD connector is located inside the terminal, in a closed compartment.

- Turn the terminal and remove the trapdoor.
- MicroSD are identified by the engraved marks on the lower housing.
- When introducing a MicroSD in its slot, be sure to put the cut corner as indicated on the picture.
- Close the trapdoor.

The terminal supports MicroSD up to 32GB.



4.3 Battery

4.3.1 Charging the battery

- When does the battery need to be charged?
 - When used daily, the terminal charges its battery each time the power adapter is connected. Charging starts automatically.
- How can the battery be charged?

Using the power adapter

 - Connect the power adapter to the terminal USB type-C connector located on the left side of the terminal.
 - Connect the power adapter to the power supply mains network.
 - Check the charging status on the top of the screen(it means battery charging).

4.3.2 Installing the battery

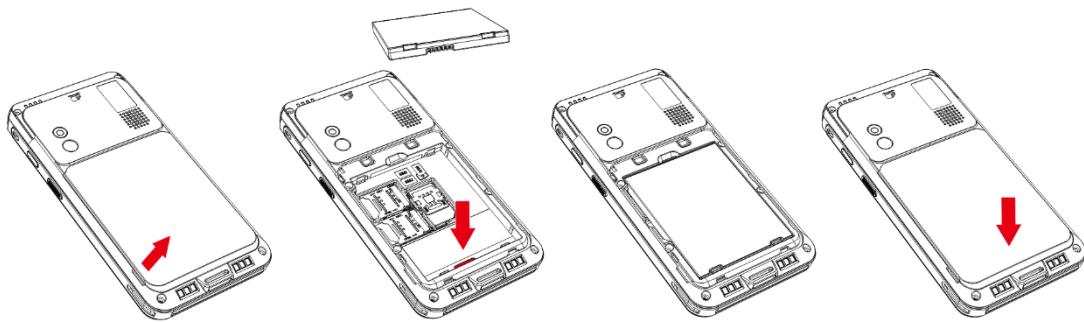


WARNING/ATTENTION

Check that the terminal is not connected to the main electric network.
Vérifier que le terminal n'est pas connecté au secteur.

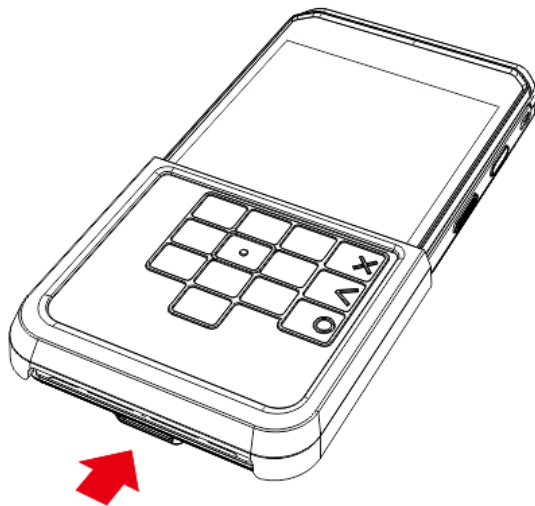
- Turn the terminal and remove the trapdoor.
- Take the battery pack included in the box.
- Locate the battery pack connector beside the battery compartment.
- Plug the battery pack connector according to the connector locating system.

-
- Place the battery pack in its compartment.
 - Close the battery trapdoor.

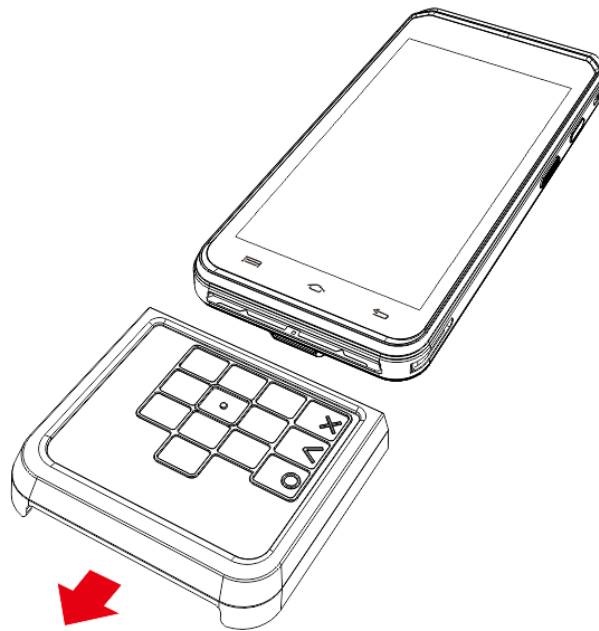


4.4 Visual Impaired Accessory

- Install the VI accessory on the screen.



- Take out the VI accessory.



5. Recommendations

5.1 Safety

Powering down the AXIUM EX6000

Disconnect the AXIUM EX6000 power supply block adapter from the electrical mainsnetwork.

Lithium cell

The AXIUM EX6000 is fitted with an internal lithium cell which should only be accessed by a qualified technician.

Battery

- AXIUM EX6000 is fitted with battery specially designed for this terminal.
- Only use the appropriate chargers and batteries listed in theingenico's catalogue.
- Do not short-circuit the battery.
- Do not attempt to open the battery container.
- Used batteries must be disposed of at the appropriated sites.

The lifespan of battery depends on:

- Features used.
- Number of charge and discharge cycles.
- Use temperature.



CAUTION/ATTENTION

RISK OF EXPLOSION BATTERY IS REPLACED BY AN INCORRECT TYPE.
DISPOSE OF USED BATTERIES ACCORDING TO THE INSTRUCTIONS.
RISQUE D'EXPLOSION LA BATTERIE EST REMPLACÉE PAR UN TYPE INCORRECT.
ÉLIMINEZ LES PILES UTILISÉES CONFORMÉMENT AUX INSTRUCTIONS.

Electrical power supply network

The electrical outlet must meet the following criteria:

- Must be installed near the equipment and easily accessible
- Do not short-circuit the battery.
- Do not attempt to open the battery container.

The power supply label contains seventeen symbols:



CCC (China Compulsory Certificate) Mark



The Regulatory Compliance Mark (RCM)



International Efficiency Marking Protocol (Energy Star Level 6)



In door use only



“Conformite Europe enne” or CE Mark



Double insulation symbol



5 Years China RoHS symbol



10 Years China RoHS symbol



BSMI(Taiwan)



PSE Mark(Japan)



Recycle in accordance with the waste electronic & electrical equipment directive



Underwriters Laboratories Inc (US Compliance)



Made from recyclable material



Low density version of Polyethylene (LDPE)



Chlorinated Polyethylene (CPE)



Risk of explosion if the battery is incorrectly replaced or is placed in a



Dispose of batteries at a hazardous waste collection site or recycling facility



SAM/SIM1/SIM2 Readers compartment

The trapdoor for battery, SAM/SIM1/SIM2, readers located underneath the terminal, must be in place during the normal operation of the terminal. See sections “Installing modules” and “Installing the battery”.

On airplanes

Your terminal must be switched off by removing the battery pack. Remove the battery from the terminal when on an airplane.

Non-compliance with these safety rules may result in legal action and/or a ban on later access to cellular network services.

Explosion areas

Some regulations restrict the use of radio equipment in chemical plants, fuel depots and any site where blasting is carried out. You are urged to comply with these regulations. The terminal shall be protected by a specially fitted and certified cover enabling use in proximity to a fuel pump.

Thunderstorm weather

According to some relevant reports, the mobile phone electromagnetic wave is good conductor of lightning. It is much easier to suffer lightning strike when the damp atmosphere forms a magnetic conductivity, especially in open areas. Do not use wireless terminals under thunderstorm weather.

Electronic health appliances

Your terminal is a radio transmitter which may interfere with health appliances, such as hearing aids, pacemaker, hospital equipment, etc.

Your doctor or the equipment manufacturer will be able to provide you with appropriate advice.

5.2 Security of your terminal

Your device fulfills current applicable PCI PTS security requirements.

Upon receipt of your terminal you should check for signs of tampering of the equipment. It is strongly advised that these checks are performed regularly after receipt. You should check, for example: that the keypad is firmly in place; that there is no evidence of unusual wires that have been connected to any ports on your terminal or associated equipment, the chip card reader, or any other part of your terminal. Such checks would provide warning of any unauthorized modifications to your terminal, and other suspicious behavior of individuals that have access to your terminal. Your terminal detects any “tampered state”. In this state the terminal will repeatedly flash the message “Warning

Detected” and further use of the terminal will not be possible. If you observe the “Warning Detected” message, you should contact the terminal helpdesk immediately.

You are strongly advised to ensure that privileged access to your terminal is only granted to staff that have been independently verified as being trustworthy. The terminal must never be put in or left at a location where it could be stolen or replaced by another device.

5.3 Fixed installation

If the device is to be used in a situation where it is not possible for the cardholder to pick up and shield their PIN entry themselves, the device may be used, but it must be installed in the following manner:

- The device must be angled at 45 or more, so that oversight of the PIN entry from the rear of the device is not possible.
- The device must either be fitted in a swivel stand - so that the customer can position the device in the best angle to prevent oversight - or the device must be fixed in the best possible position to prevent oversight if such a generic position exists in the specific environment to which the device is installed.
- The device environment must be accompanied with conspicuous notices and educational material which informs the customer to shield their PIN during PIN entry.
- The device must be deployed so that oversight from other customers, either in different payment lanes, or in other areas of the shopping environment, is prevented. This may be achieved through the placement of the lanes and device, so that the customer is automatically positioned between the device keypad and other customers. Alternatively, it may be achieved by the environment in which the device is installed, so that the checkout itself shields the PIN entry process.
- The terminal is exclusively made for indoor use.

ADVICE

Positioning of the terminal on check stand must be in such a way to make cardholder PIN (Personal Identification Number) spying infeasible.



Installing device on an adjustable stand must be in such a way that consumers can swivel the terminal sideways and/or tilt it forwards/backwards to a position that makes visual observation of the PIN-entry process difficult.

Positioning of in-store security camera such that the PIN- entry keypad is not visible.

NEVER ask the customer to divulge their PIN Code. Customers should be advised to ensure that they are not being overlooked when entering their PIN Code.

5.4 Cleaning the terminal

Unplug all the wires from terminal.

Good rules for proper cleaning of the terminal are:

- Use a soft cloth that is very slightly soaked with soapy water to clean the outside of terminal.
- Do not clean the electrical connections.
- Do not use in any case, solvents, detergents or abrasive products: Those materials might damage the plastic or electrical contacts.
- Avoid exposing the terminal to the direct rays of the sun.
- Do not put anything into the slot of the smart card reader.

5.5 Transport and storage

Adopt general transportation mode, and prevent the goods from sunlight, snow, shower and mechanical impact. Transport the devices with care, do not throw it forcibly. Prevent the packaging from extrusion during transportation, to avoid breakage.

The product should be stored in the original packing box. The warehouse is not allowed to have all sorts of harmful gases, inflammable, explosive, corrosive chemical goods, strong mechanical vibration and strong magnetic field. Packing box should be at least 15cm above the ground, and be away from heat, cold, window or air inlet source at least 50cm.

6. Standard

FCC Warning

This device complies with part 15 of the FCC Rules. Operation is subject to the following two conditions: (1) This device may not cause harmful interference, and (2) this device must accept any interference received, including interference that may cause undesired operation.

Any Changes or modifications not expressly approved by the party responsible for compliance could void the user's authority to operate the equipment.

Note: This equipment has been tested and found to comply with the limits for a Class B digital device, pursuant to part 15 of the FCC Rules. These limits are designed to provide reasonable protection against harmful interference in a residential installation. This equipment generates, uses and can radiate radio frequency energy and, if not installed and used in accordance with the instructions, may cause harmful interference to radio communications. However, there is no guarantee that interference will not occur in a particular installation. If this equipment does cause harmful interference to radio or television reception, which can be determined by turning the equipment off and on, the user is encouraged to try to correct the interference by one or more of the following measures:

- Reorient or relocate the receiving antenna.
- Increase the separation between the equipment and receiver.
- Connect the equipment into an outlet on a circuit different from that to which the receiver is connected.
- Consult the dealer or an experienced radio/TV technician for help.

ISED WARNING

This device complies with ISED licence-exempt RSS standard (s). Operation is subject to the following two conditions: (1) this device may not cause interference, and (2) this device must accept any interference, including interference that may cause undesired operation of the device.

Le présent appareil est conforme aux CNR d'ISED applicables aux appareils radio exempts de licence.

L'exploitation est autorisée aux deux conditions suivantes:

- (1) l'appareil ne doit pas produire de brouillage, et
- (2) l'appareil doit accepter tout brouillage radioélectrique subi, même si le brouillage est susceptible d'en compromettre le fonctionnement.

Under Innovation, Science and Economic Development Canada regulations, this radio transmitter may only operate using an antenna of a type and maximum (or lesser) gain

approved for the transmitter by Innovation, Science and Economic Development Canada. To reduce potential radio interference to other users, the antenna type and its gain should be so chosen that, the equivalent isotropically radiated power (e.i.r.p.) is not more than that necessary for successful communication.

Conformément à la réglementation ISEDC, le présent émetteur radio peut fonctionner avec une antenne d'un type et d'un gain maximal (ou inférieur) approuvé pour l'émetteur par Industry Canada. Dans le but de réduire les risques de brouillage radioélectrique à l'intention des autres utilisateurs, il faut choisir le type d'antenne et son gain de sorte que la puissance isotrope rayonnée équivalente (p.i.r.e.) ne dépasse pas l'intensité nécessaire à l'établissement d'une communication satisfaisante.

ISED RF exposure statement:

This equipment complies with ISED radiation exposure limits set forth for an uncontrolled environment. This transmitter must not be co-located or operating in conjunction with any other antenna or transmitter.

Le rayonnement de la classe b respecte ISED fixaient un environnement non contrôlés. Lanceurs ou ne peuvent pas coexister cette antenne ou capteurs avec d'autres.

Environment (WEEE, Batteries and packaging)

This product is labeled in accordance with European Directives 2012/19/EU concerning Waste Electrical and Electronic Equipment (WEEE) and 2013/56/EU concerning Batteries and Accumulators. Those provisions are requiring producers and manufacturers to become liable for take-back, treatment and recycling upon end of life of equipment and batteries.

BATTERIES

If your product contains batteries, they must be disposed of at appropriate collection points.

THE PRODUCT



The crossed-out waste bin stuck on the product or its accessories means that the product belongs to the family of electrical and electronic equipment, and waste batteries must not be thrown away but collected separately and recycled.

Please contact your retailers for more detailed information about the compliance solution in place for disposing of your old product and used batteries.

Packaging waste must also be collected separately to assure a proper disposal and recycling.

In this way you can participate in the re-use and upgrading of Electrical and Electronic Equipment Waste, which can have an effect on the environment and human health.

7. Troubleshooting

Q:The terminal cannot be started.

A: The device might be under low energy status or the program may be damaged. Please make sure the power is enough and then restart your device. If it still fails, please contact our customer service department for help.

Q: Transaction Processing Failure

A: Following reasons are likely to cause transaction failure: damaged magnetic card or smartcard SAM card, damaged card reader, improper operation of card swiping, damaged or unconnected, unconnected phone line, etc.

- Try to use more than one magnetic card to test the transaction, to confirm the failure is not caused by magnetic card.
- Make sure card swiping is operated correctly.
- Manually process the transaction instead of card reader. If manual transaction works, the failure may be caused by magnetic card reader.
- Use more than one smart card to test the transaction, to confirm the failure is not caused by smart card. Make sure the SAM card is correctly inserted into the card slot.
- Check if the SIM card is installed correctly and local wireless communication network functions or not.

If there is still problem, please contact our customer service center.

This Document is Copyright © 2020 by ingenico Group. ingenico retains full copyright ownership, rights and protection in all material contained in this document. The recipient can receive this document on the condition that he will keep the document confidential and will not use its contents in any form or by any means, except as agreed beforehand, without the prior written permission of ingenico. Moreover, nobody is authorized to place this document at the disposal of any third party without the prior written permission of ingenico. If such permission is granted, it will be subject to the condition that the recipient ensures that any other recipient of this document, or information contained therein, is held responsible to ingenico for the confidentiality of that information.

Care has been taken to ensure that the content of this document is as accurate as possible. ingenico however declines any responsibility for inaccurate, incomplete or outdated information. The contents of this document may change from time to time without prior notice, and do not create, specify, modify or replace any new or prior contractual obligations agreed upon in writing between ingenico and the user.

ingenico is not responsible for any use of this device, which would be non-consistent with the present document.

All trademarks used in this document remain the property of their rightful owners.

WWW.ingenico.com

28-32, Boulevard de Grenelle, 75015 PARIS - FRANCE/ (T)+33(0)1 58 01 80 00 / (F)+33 (0)1 58 01 91 35

Ingenico-SA au capital de 47 656 332 / 317 218 758 RCS Nanterre.