

BOURNS
PT61017XPL-1
2116

STURLEY
2125

D1
220C
UD

WINDON
W971GG6NB
61097X900
128PGA

SPT31
2107
240ZBK

WINCO
2

1KG-ID
NW799

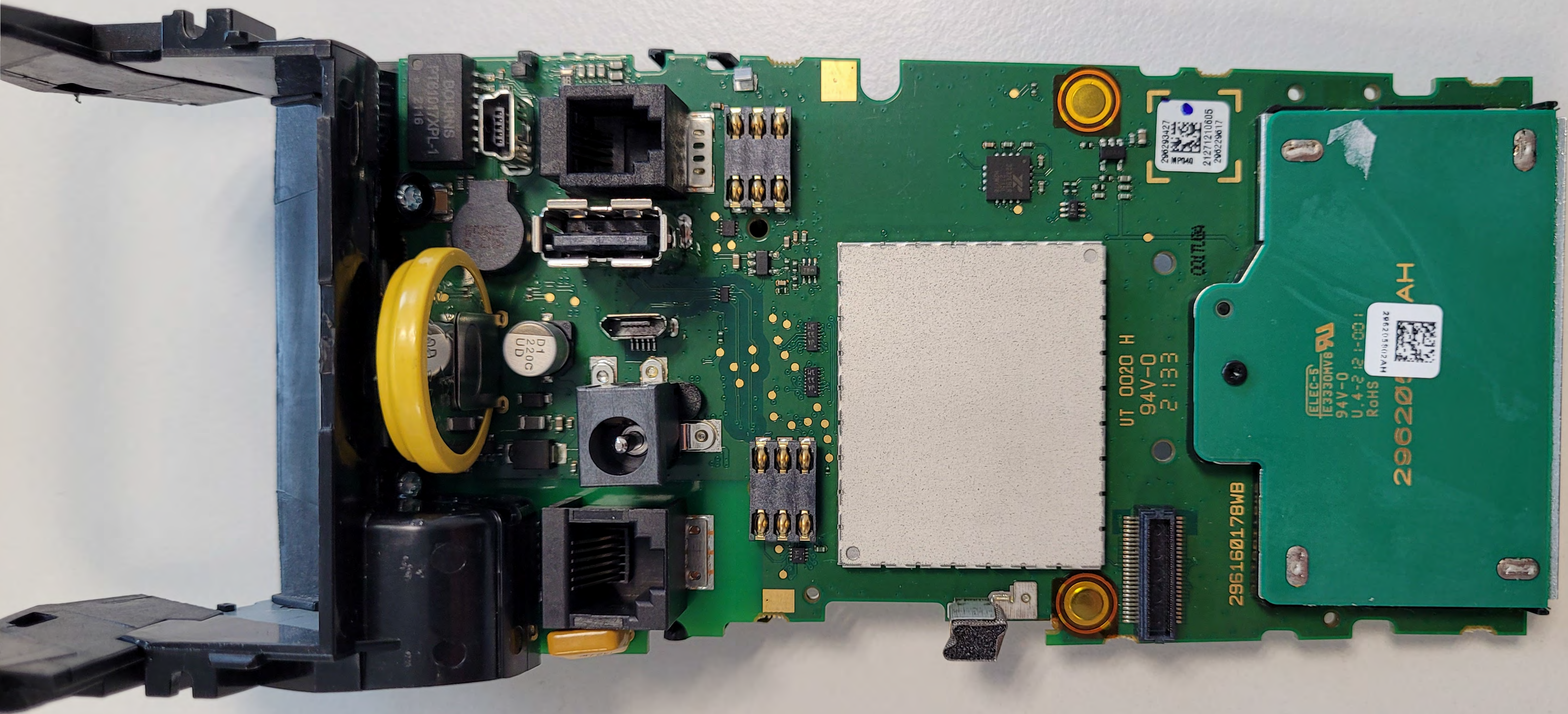
UT 0020 H
94V-0
2133

296200002AH
21271210802
296229617

ELEC-S
E3330HV8 RJ
94V-0
P.3-2 12 1-00:
RoHS

296200002AH

296160178WB



BOURNS
PT81017XPL-1
2116

P1
220G
UD

296293427
MP44
21271210605
296229617

UT 0020 H
94V-0
2133

296160178WB

ELEC-5
E3330MV8
94V-0
U.4-2121-001
RoHS

296200178AH
100-1-001

296200178AH