

INTERNAL PHOTOS OF TESTED EUT



General views internal of Base





General views PCB of Base



Views of connector



General views PCB of Base



General views internal of Terminal





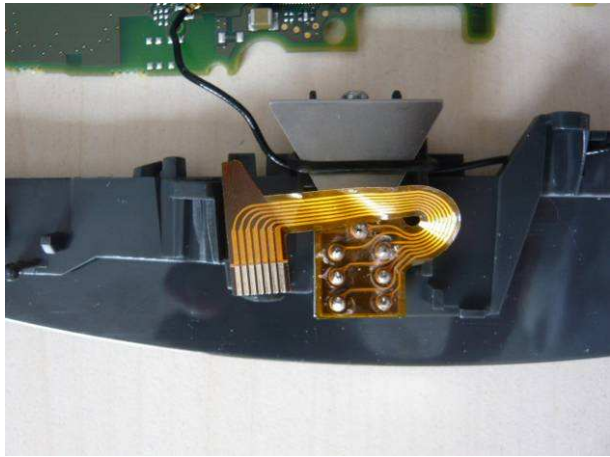
General views PCB of terminal



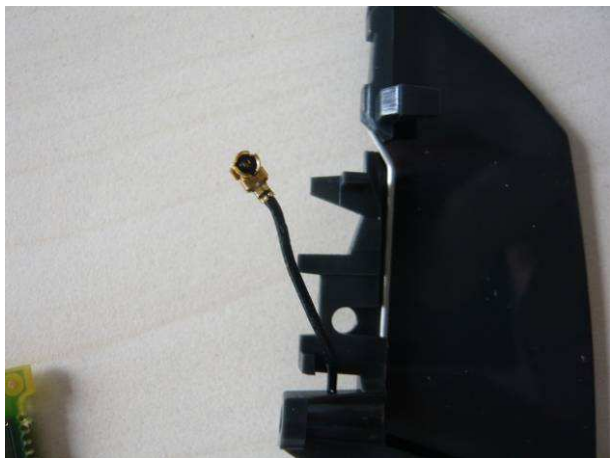


Detail views PCB of terminal

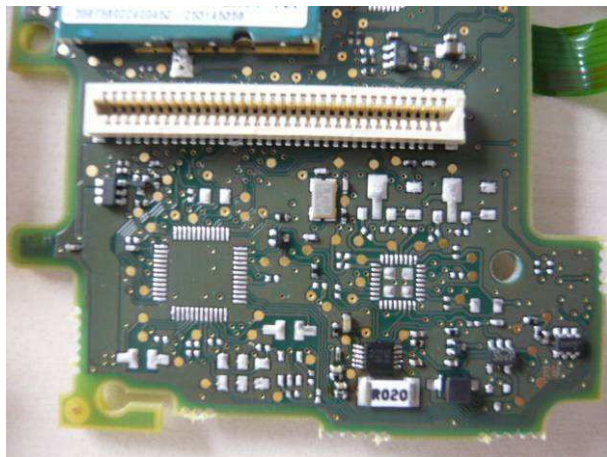




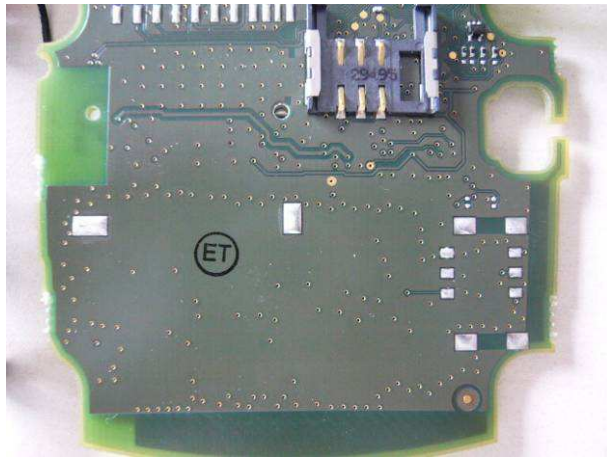
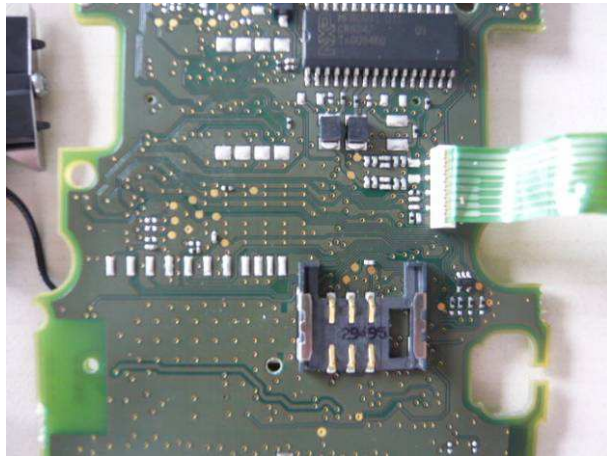
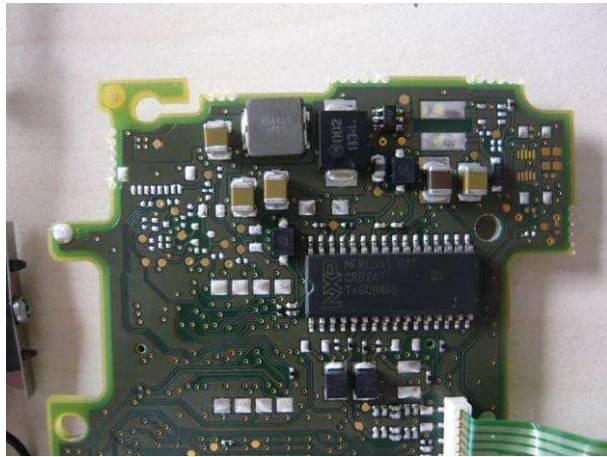
Detail views Chipset-cable-connector-antenna



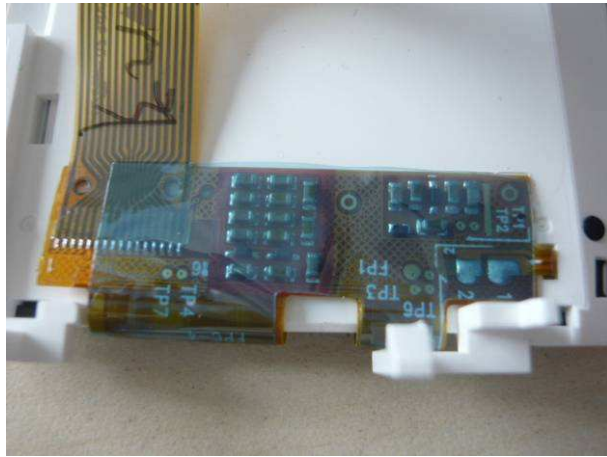
Detail views 13.56MHz antenna



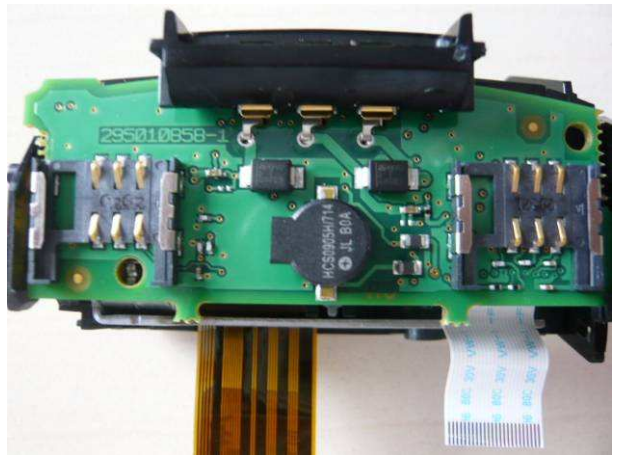
Detail views PCB



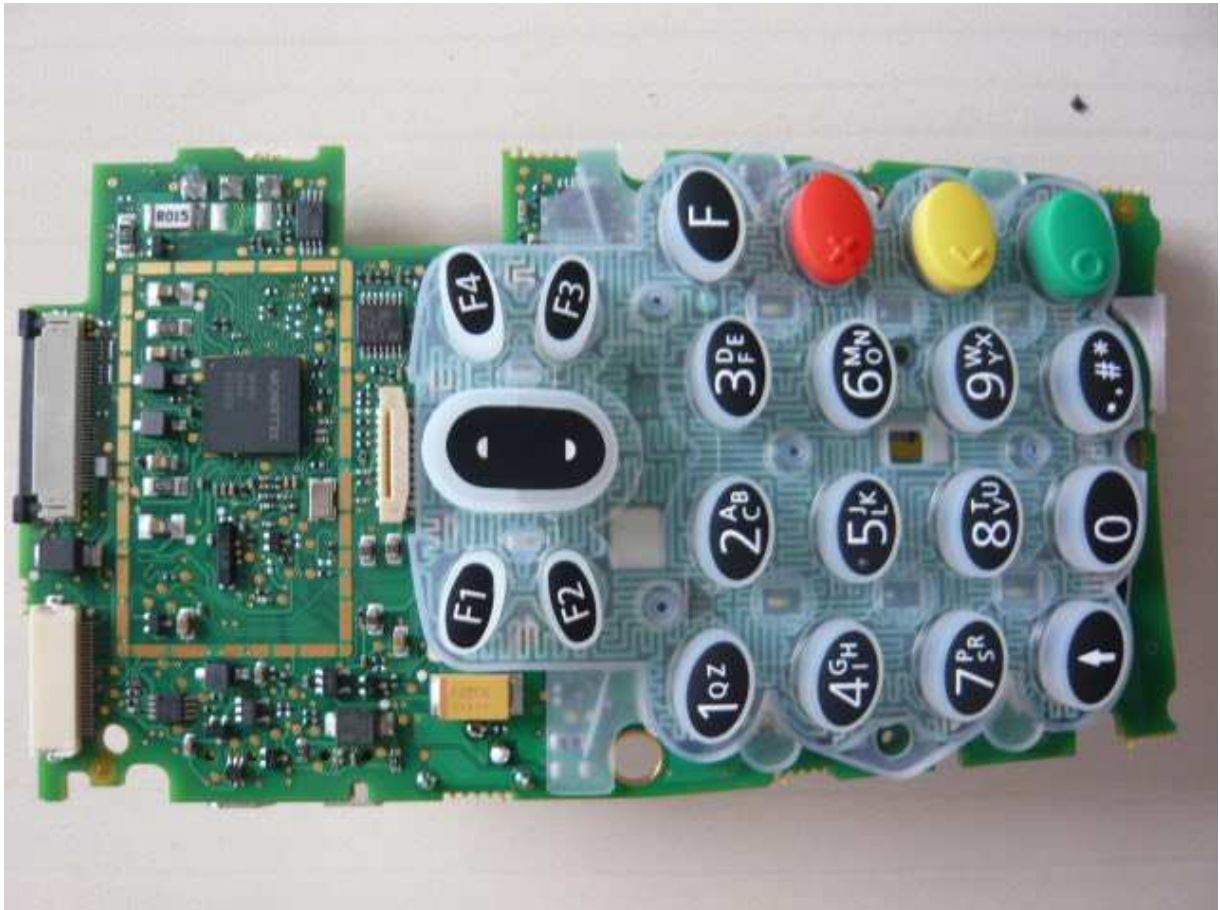
Detail views PCB other side with 13.56MHz antenna connector



Detail views of monitor

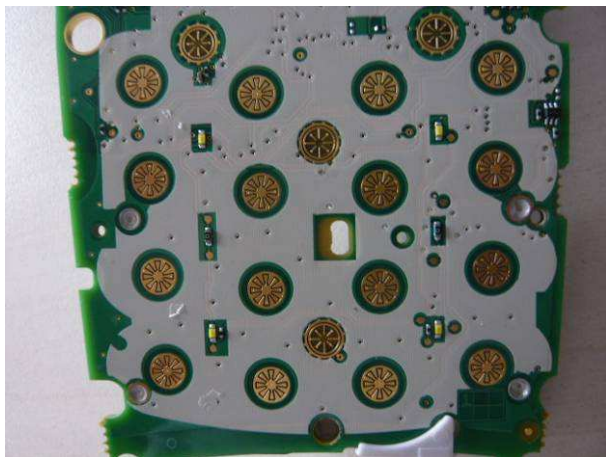
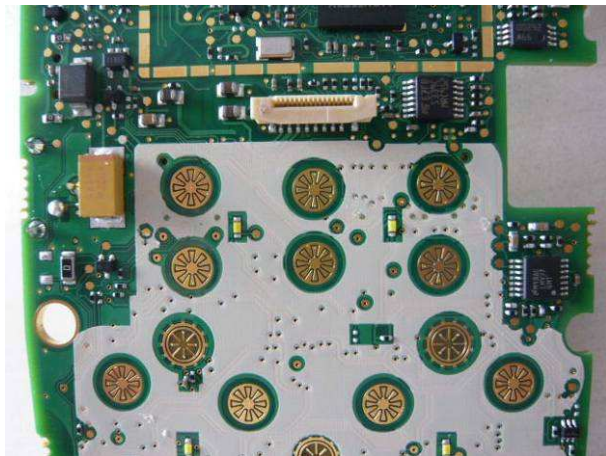


Detail views of PCB printer with SAMs

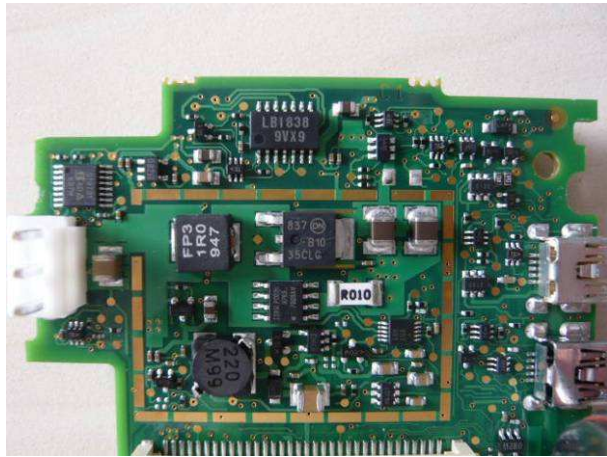


Detail views of PCB





Detail views of PCB



Detail views of PCB