

# AXIUM DOCK

User Guide

**ingenico**  
GROUP

# Contents

<b>1</b>	<b>Introduction</b>	<b>4</b>
<b>2</b>	<b>Presentation</b>	<b>5</b>
<b>2_1</b>	<b>Content of the box</b>	<b>5</b>
<b>2_2</b>	<b>Overview on the AXIUM DOCK</b>	<b>7</b>
<b>3</b>	<b>Use of the Docking Station</b>	<b>9</b>
<b>3_1</b>	<b>Power on the device</b>	<b>9</b>
<b>3_2</b>	<b>Docking / undocking of the D7</b>	<b>9</b>
<b>3_3</b>	<b>AXIUM D7 charging</b>	<b>10</b>
<b>3_4</b>	<b>Advance paper</b>	<b>11</b>
<b>3_5</b>	<b>LED information</b>	<b>11</b>
<b>4</b>	<b>Installation</b>	<b>12</b>
<b>4_1</b>	<b>Recommendations</b>	<b>12</b>
<b>4_2</b>	<b>Docking Station connections</b>	<b>13</b>
<b>4_2_1</b>	<b>USB slots</b>	<b>13</b>
<b>4_2_2</b>	<b>Charging contacts</b>	<b>13</b>
<b>4_2_3</b>	<b>NFC interface for Bluetooth pairing</b>	<b>14</b>
<b>4_3</b>	<b>Paper roll</b>	<b>15</b>
<b>4_3_1</b>	<b>Main characteristics of INGENICO paper roll</b>	<b>15</b>
<b>4_3_2</b>	<b>Installing paper roll</b>	<b>16</b>



<b>4_4</b>	Ethernet connection over WIFI	17
<b>4_4_1</b>	Software configuration	17
<b>4_4_2</b>	Factory default settings	19
<b>4_4_3</b>	Firmware upgrade	20
<b>4_4_4</b>	Emergency firmware upgrade	20
<b>4_4_5</b>	Change settings	21
<b>5</b>	Recommendations	22
<b>5_1</b>	Securisation	22
<b>5_2</b>	Safety	22
<b>5_3</b>	FCC/IC Compliance	23
<b>6</b>	Environment (WEE, Batteries and Packaging)	25
<b>7</b>	Troubleshooting	25
<b>8</b>	Marking	26



# 1\_Introduction

We hope that you will be fully satisfied with your new Docking Station for AXIUM D7 terminal.

Read this guide to understand and make the best use of this accessory. It presents you the necessary information about use, installation, maintenance, safety and security recommendations.



## WARRANTY / SECURITY

Use only the power supply included with the product to ensure best performance and safety. Maintenance should only be provided by Ingenico authorized technician. Failure to comply with these instructions will void the manufacturer's responsibility.

---



---

This symbol indicates an important Warning.

---



---

This symbol indicates a piece of advice.

---



## 2\_Presentation

### 2.1 Content of the box

#### **AXIUM DOCK station**

The AXIUM DOCK is an accessory for AXIUM D7 POS terminal. It offers different types of functions:

- Charge contacts for Axium D7 charging.
- 3 USB slots
- Ethernet connection through a Wifi router (option)

The AXIUM DOCK embeds a thermal printer



#### **User guide**



**> 8V-4V Power supply**



**> Magic box cable (option)**



**> Power cable**



---

**WARNING**



The power supply unit provided with your equipment is specially designed for Ingenico terminals. Do not use any other power supply. The use of a power supply with apparently similar voltage/current characteristics may damage your terminal.

---



---

**ADVICE**

Keep the packaging. It must be re-used whenever the terminal is shipped.

---

## 2\_2 Overview of the AXIUM DOCK

Charging contact +  
USB interface

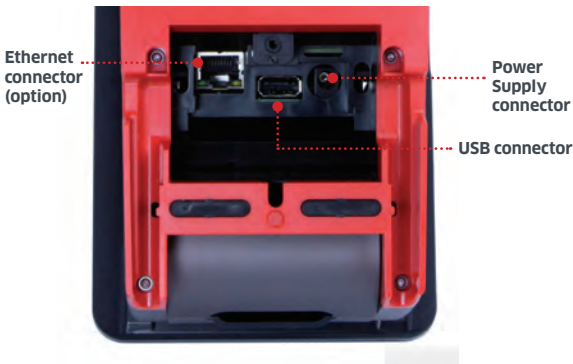


➤ Docking Station unit



## **Compartment below the docking**

- Ethernet connection
- Power supply connection
- USB connection



Weight	780gr
Dimensions (L x w x h)	Terminal : 122 x 212 x 117 mm3
Electrical mains network	100-240VAC / 50-60 Hz - Class VI equipment
Connections on station	3 USB slots Charging contacts + USB interface through the tablet 1 Ethernet port (option)



## 3\_Use of the DOCKING STATION



### ADVICE

Before to use the Docking Station, always check if the paper roll is present.

### 3\_1 Power on the device

To power on the station it is necessary to connect the device to the electrical main network through the power supply unit provided with the station.



Power  
connection

### 3\_2 Docking / undocking of the D7

In order to charge the D7, you have to dock it on the station. This action is automatic by sliding down the D7 on the terminal support as per below.



In case you need to undock the product, please action the dedicated button on the station as per below.



### 3\_3 Axium D7 charging

The Axium Dock allows to charge the Axium D7 through the contacts spring on the tablet holder.

The Axium Dock offers a 5V voltage with a maximum current of 2A.



### 3\_4 Advance paper

Advance the paper by pressing “advance paper key”.



### 3\_5 LED information

Two LEDs are integrated in the docking station :

- One (on the left) to indicate if the station is powered
- The second one (on the right), to indicate the Bluetooth connection during printing ticket.



# 4\_Installation

## 4\_1 Recommendation

### Location of the AXIUM DOCK

Place the terminal on flat surface near an electric socket. The terminal should be placed far from any very hot zones, protected from vibrations, dust, damp and electromagnetic radiation (computer screen, anti-theft barrier etc.).

#### Operating conditions

Ambiant temperature	From 0°C to +40°C
Max relative humidity	85% at +40°C

#### Storage conditions

Ambiant temperature	From -20°C to +70°C
Max relative humidity	85% at +55°C

#### Power supply

Electrical main network	100 - 240VAC / 50-60Hz - Class VI
External power supply	8V - 4A provided by Ingenico

### Securisation of your device

To undock your terminals below the terminal support please press the dedicated button.



## 4\_2 Docking Station connections

### 4\_2\_1 USB slots

The Docking station embeds 3 USB slots. All the 3 ports are available from tablet (Axium D7) when this one is physically connected to the docking Station.

For instance, external barcode reader, external printer or cash drawer can be connected to the Station.



### 4\_2\_2 Charging contacts

The four contacts on the tablet holder offer the power supply to the Axium D7 and the USB interface.



**Insert the Axium D7 terminal on the tablet support to make the charge**



### 4\_2\_3 NFC interface for Bluetooth pairing

The docking Station embeds a passive NFC interface for Bluetooth pairing.

To make the Bluetooth pairing easier.

This interface allows to make key exchange between Axiom D7 and the station for Bluetooth connection.

To proceed to this pairing, please launch the pairing application from the tablet and then approach the terminal to the dock.



## 4\_3 Paper roll

### 4\_3\_1 Mains characteristics of INGENICO paper roll

R40 paper roll characteristics	Precisions
Colour	White
Width	58 mm
Diameter	42 mm (Max)
Length	About 18 metres

The thermal paper can be deteriorated by poor storage condition, so we recommend you to avoid :

- Storage in hot wet places (near air-conditioner, humidity higher than 85%)
- Exposure to sunlight or ultraviolet for the long periods
- Contact with organic solvents (solvent type adhesive)
- Direct contact with materials containing plasticizers (PVC transparent folders or envelopes)
- Direct contact with "dialzo" papers
- Direct contact with water
- Rubbing or pressing the paper too strongly



#### WARNING

For best product performances, **only use heat sensitized paper approved by Ingenico.**



#### WARNING

Switch off the terminal prior to install a paper roll.  
Use only paper approved by Ingenico  
The use of non-approved paper is likely to damage the printer of the Docking Station.



## 4\_3\_2 Installing paper roll

- Open the paper compartment by pulling on the paper door button and pull the door.



- Insert the paper roll in the compartment following the directions shown on the below picture
- Pull the paper up to the top of the terminal
- Maintain the paper and close the lid
- Press simultaneously on both upper corners of the paperflap, as shown by arrows on picture, until it clips into position





## 4\_4 Ethernet connection over WIFI

### 4\_4\_1 Software configuration

The first time you receive your docking station equipped with the Wifi/Ethernet board, this one is under Factory default mode.

You could access the device via Ethernet with IP 192.168.0.50.



**User Name :** Admin

**Password :** Password

Those information can be found on the docking label (below the product)

Remark: if you change some settings on the web interface and you save those settings, you will not be able to access to the Factory default mode.



Once the configuration changed under the Factory Test Mode, you could only access the device via WLAN with IP 192.168.1.1.

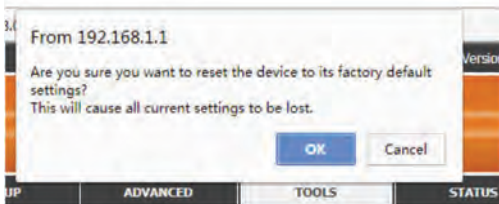
Or you could access the device via Ethernet with WAN IP and management port when the "Enable Remote Management" function is enabled. And with the password you set or default password.

The screenshot shows the web interface for the WNC-AC15 device. At the top, it displays 'Product Page : WNC-AC15', 'Hardware Version : B1', and 'Firmware Version : 1.00'. The 'ingenico' logo is prominently displayed. Below the logo is a navigation bar with tabs for 'WHC-AC15', 'SETUP', 'ADVANCED', 'TOOLS', 'STATUS', and 'SUPPORT'. The 'ADVANCED' tab is selected, and the 'ADMINISTRATOR SETTINGS' section is active. This section includes instructions for the 'admin' account, a 'Save Settings' button, and an 'ADMIN PASSWORD' section with two password input fields. Below that is the 'SYSTEM NAME' section with a 'Gateway Name' field set to 'WNC-AC15'. The 'ADMINISTRATION' section contains options for 'Enable Graphical Authentication', 'Enable HTTPS Server', and 'Remote Admin Port' (set to 8080). A red box highlights the 'Remote Admin Port' field and the 'Use HTTPS' checkbox. The 'Remote Admin Inbound Filter' is set to 'Block All'. A 'WIRELESS' section is visible at the bottom of the page.



## 4\_4\_2 Factory default settings

Enter TOOLS → SYSTEM page and click “Restore Factory Defaults” button and click OK in the Popup message, then the router will restore all factory configuration settings.



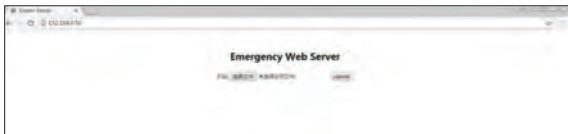
### 4\_4\_3 Firmware upgrade

Enter TOOLS → FIRMWARE page, click on “BROWSE” to search the local hard drive for the firmware to be used for the update



### 4\_4\_4 Emergency firmware upgrade

If the firmware is damaged, the device could not load the runtime firmware and it would stop in bootloader. You could access the device using



## 4.4.5 Change settings

You could access the function page you want to modify and change the setting you need.

Change settings then click “Save Settings” button, the settings will be saved and taking effect.

Below is an example (function details could be found in external spec)

**WIRELESS NETWORK**

Use this section to configure the wireless settings for your Ingenuico router. Please note that changes made in this section may also need to be duplicated on your wireless client.

To protect your privacy you can configure wireless security features. This device supports three wireless security modes including: WEP, WPA and WPA2.

Save Settings Don't Save Settings

**WIRELESS NETWORK SETTINGS**

Wireless Band : 2.4GHz Band

Enable Wireless :

Wireless Network Name : test2@gmail (Also called the SSID)

802.11 Mode : Mixed 802.11n, 802.11g and 802.11b

Enable Auto Channel Scan :

Wireless Channel : 2.412 [2G] - CH 1

Transmission Rate : Auto (Automatic) (Mbps)

Channel Width : 20/40 (Auto)

Visibility Status :  Visible  Invisible

**WIRELESS SECURITY MODE**

Security Mode : WPA2-Personal

**WPA**

Use **WPA** or **WPA2** mode to achieve a balance of strong security and best compatibility. This mode uses WPA for legacy clients while maintaining higher security with stations that are WPA2 capable. Also the strongest cipher that the client supports will be used. For best security, use **WPA2 Only** mode. This mode uses AES(CCM) cipher and legacy stations are not allowed access with WPA security. For maximum compatibility, use **WPA Only**. This mode uses TKIP cipher. Some gaming and legacy devices work only in this mode.

**Helpful hints...**

- Changing your Wireless Network Name is the first step in securing your wireless network. We recommend that you change it to a familiar name that does not contain any personal information.
- Enable Auto Channel Selection let the router scan for the best possible channel for your wireless network to operate on.
- Enabling Hidden Mode is another way to secure your network. With this option enabled, no wireless clients will be able to see your wireless network when they perform a scan to see what's available. In order for your wireless device to connect to your router, you will need to manually enter the Wireless Network Name on each device.
- If you have enabled wireless security, make sure you enter down the WEP Key or Passphrase that you have configured. You will need to enter this information on any wireless device that you connect to your wireless network.

» More...



## 5\_Recommendations

### 5.1 Securisation

AXIUM / series offers the possibility to secure AXIUM DOCK and AXIUM D7 with one single Kensington.

When the D7 is docked lock the Kensington system as per below.



### 5.2 Safety

#### Powering down the AXIUM DOCK

Disconnect the AXIUM DOCK power supply block adapter from the electrical mains network.

#### Electrical power outlet

The electrical outlet must meet the following criteria :

- Must be installed **near the equipment and easily accessible;**
- Do not short-circuit the battery.
- Do not attempt to open the battery container.
- Used batteries must be disposed of at the appropriate sites.



## Explosion areas

Certain regulations restrict the use of radio equipment in chemical plants, fuel depots and any site where blasting is carried out. You are urged to comply with these regulations. The terminal shall be protected by a specially fitted and certified cover enabling use in proximity to a fuel pump.

## Electronic health appliances

Your handset is a radio transmitter which may interfere with health appliances, such as hearing aids, pacemaker, hospital equipment, etc. Your doctor or the equipment manufacturer will be able to provide you with appropriate advice.

## 5\_3 FCC/IC Compliance

You are cautioned that changes or modifications not expressly approved by the part responsible for compliance could void the user's authority to operate the equipment.

This equipment has been tested and found to comply with the limits for a Class B digital device, pursuant to part 15 of the FCC Rules. These limits are designed to provide reasonable protection against harmful interference in a residential installation. This equipment generates, uses and can radiate radio frequency energy and, if not installed and used in accordance with the instruction, may cause harmful interference to radio communications. However, there is no guarantee that interference will not occur in a particular installation. If this equipment does cause harmful interference to radio or television reception which can be determined by turning the equipment off and on, the user is encouraged to try to correct interference by one or more of the following measures:

- Reorient or relocate the receiving antenna.
- Increase the separation between the equipment and receiver.
- Connect the equipment into an outlet on circuit different from that to which the receiver is connected.
- Consult the dealer or an experienced radio/TV technician for help.

This device complies with Industry Canada licence-exempt RSS standard(s). Operation is subject to the following two conditions: (1) this device may not cause interference, and (2) this device must accept any interference, including interference that may cause undesired operation of the device.



Le présent appareil est conforme aux CNR d'Industrie Canada applicables aux appareils radio exempts de licence. L'exploitation est autorisée aux deux conditions suivantes : (1) l'appareil ne doit pas produire de brouillage, et (2) l'utilisateur de l'appareil doit accepter tout brouillage radioélectrique subi, même si le brouillage est susceptible d'en compromettre le fonctionnement.

This device complies with FCC RF radiation exposure limits set forth for general population. This device must be installed to provide a separation distance of at least 20cm from all persons and must not be co-located or operating in conjunction with any other antenna or transmitter.



## 6\_Environment (WEE, Batteries and Packaging)

This product is labeled in accordance with European Directives 2012/19/UE concerning Waste Electrical and Electronic Equipment (WEEE) and 2006/66/EC concerning Batteries and Accumulators. Those provisions are requiring producers and manufacturers to become liable for take-back, treatment and recycling upon end of life of equipment and batteries.



The associated symbol means that WEEE and waste batteries must not be thrown away but collected separately and recycled.

Ingenico ensures that efficient collection and recycling schemes are set-up for WEEE and batteries according to the local regulation of your country. Please contact your retailers for more detailed information about the compliance solution in place for disposing of your old product and used batteries.

Packaging waste must also be collected separately to assure a proper disposal and recycling.

Please note that proper recycling of the electrical and electronic equipment and waste batteries will ensure safety of human health and environment.

## 7\_Troubleshooting

The docking station does not turn on

- Check that the external power supply is correctly plugged
- Get technical support

The Ethernet connection does not work

- Check that the Leds on the Ethernet connector are switch ON
- Get technical support



## 8\_Marking



The CE marking indicates terminal complies with harmonized standards and requirements of European Directives



This marking indicates that the product operates with an alternating current (AC) source (mains). It is completed by afferent values (voltage, frequency and max current).



This marking indicates that your terminal is suitable for direct current (DC) only. It is completed by afferent values (voltage, and max current).



This marking indicates power supply meets the energy efficiency level V requirements.



Marking for Class VI product. Such product does not require a safety connection to electrical earth.



For Indoor use only.



This marking indicates power supply meets limited power source safety requirements.



Power on marking placed on the docking station close to a LED to indicate if the device is switched on.



Bluetooth marking placed on the docking station close to a LED to indicate if the device is connected in Bluetooth.



# NOTES

"This Document is Copyright © 2019 by INGENICO Group. INGENICO retains full copyright ownership, rights and protection in all material contained in this document. The recipient can receive this document on the condition that he will keep the document confidential and will not use its contents in any form or by any means, except as agreed beforehand, without the prior written permission of INGENICO. Moreover, nobody is authorized to place this document at the disposal of any third party without the prior written permission of INGENICO. If such permission is granted, it will be subject to the condition that the recipient ensures that any other recipient of this document, or information contained therein, is held responsible to INGENICO for the confidentiality of that information.

Care has been taken to ensure that the content of this document is as accurate as possible. INGENICO however declines any responsibility for inaccurate, incomplete or outdated information. The contents of this document may change from time to time without prior notice, and do not create, specify, modify or replace any new or prior contractual obligations agreed upon in writing between INGENICO and the user. INGENICO is not responsible for any use of this device, which would be non consistent with the present document.

All trademarks used in this document remain the property of their rightful owners."

## Your contact



[www.ingenico.com](http://www.ingenico.com)

28-32, boulevard de Grenelle, 75015 Paris - France / (T) +33 (0)1 58 01 80 00 / (F) +33 (0)1 58 01 91 35  
Ingenico - SA au capital de 47 656 332 / 317 218 758 RCS Nanterre

● SEAMLESS PAYMENT

AXIUM DOCK



28

Copyright© 2019 Ingenico  
All rights reserved

900035196 R11 000 04/0319