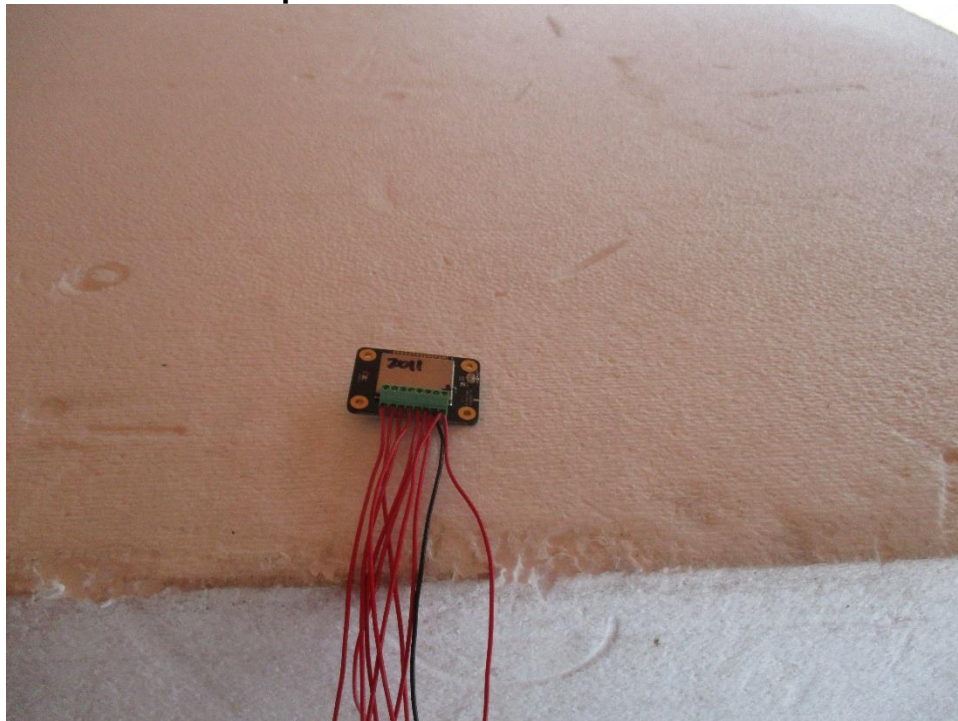


**Test Photographs
Spurious Radiated Emissions**



X Axis



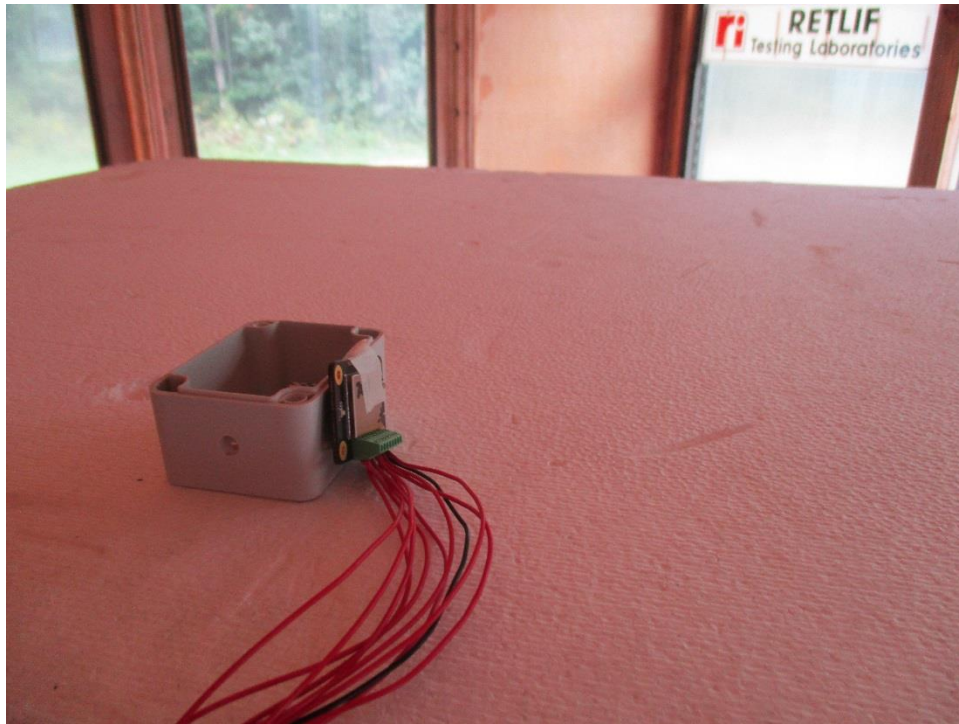
Y Axis



Retlif Testing Laboratories

Report No. R-6339N-1

Test Photographs Spurious Radiated Emissions



Z Axis



Retlif Testing Laboratories

Report No. R-6339N-1

Test Photographs Spurious Radiated Emissions



Horizontal Antenna Polarization, 30 MHz to 200 MHz, Biconical Antenna
Internal Antenna



Vertical Antenna Polarization, 30 MHz to 200 MHz, Biconical Antenna
Internal Antenna



Retlif Testing Laboratories

Report No. R-6339N-1

**Test Photographs
Spurious Radiated Emissions**



Horizontal Antenna Polarization, 200 MHz to 1 GHz, Log Periodic
Internal Antenna



Vertical Antenna Polarization, 200 MHz to 1 GHz, Log Periodic
Internal Antenna



Retlif Testing Laboratories

Report No. R-6339N-1

Test Photographs
Spurious Radiated Emissions



Horizontal Antenna Polarization, 1 MHz to 18 GHz, Log Periodic
Internal Antenna



Vertical Antenna Polarization, 1 GHz to 18 GHz, Log Periodic
Internal Antenna



Retlif Testing Laboratories

Report No. R-6339N-1

Test Photographs Spurious Radiated Emissions



Horizontal Antenna Polarization, 18 GHz to 25 GHz, Log Periodic
Internal Antenna



Vertical Antenna Polarization, 18 GHz to 25 GHz, Log Periodic
Internal Antenna



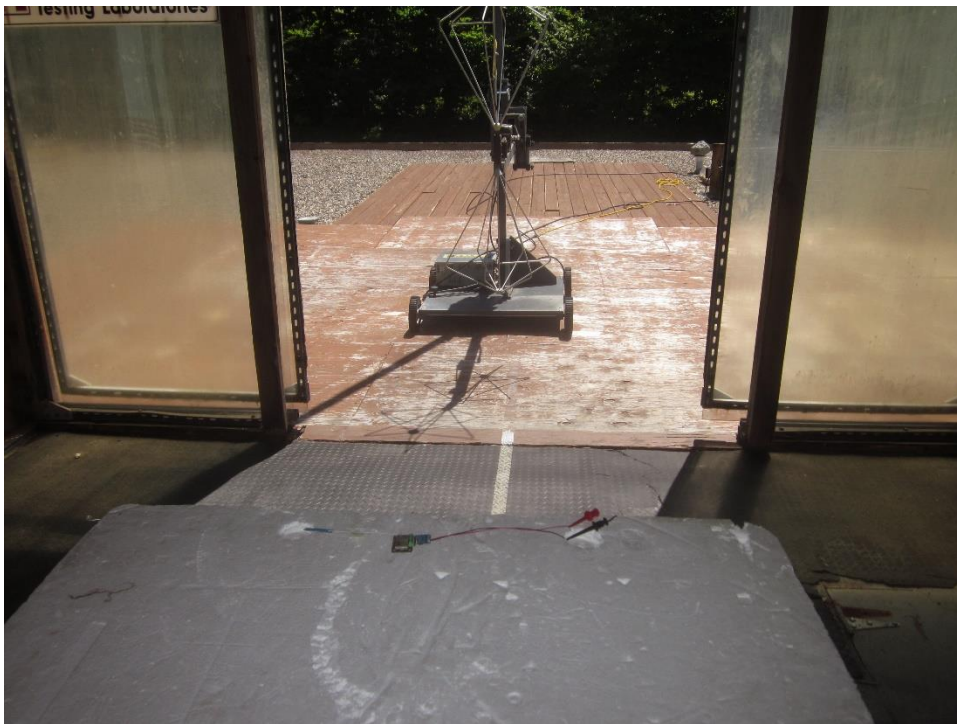
Retlif Testing Laboratories

Report No. R-6339N-1

Test Photographs Spurious Radiated Emissions



Horizontal Antenna Polarization, 30 MHz to 200 MHz, Biconical Antenna,
External Antenna



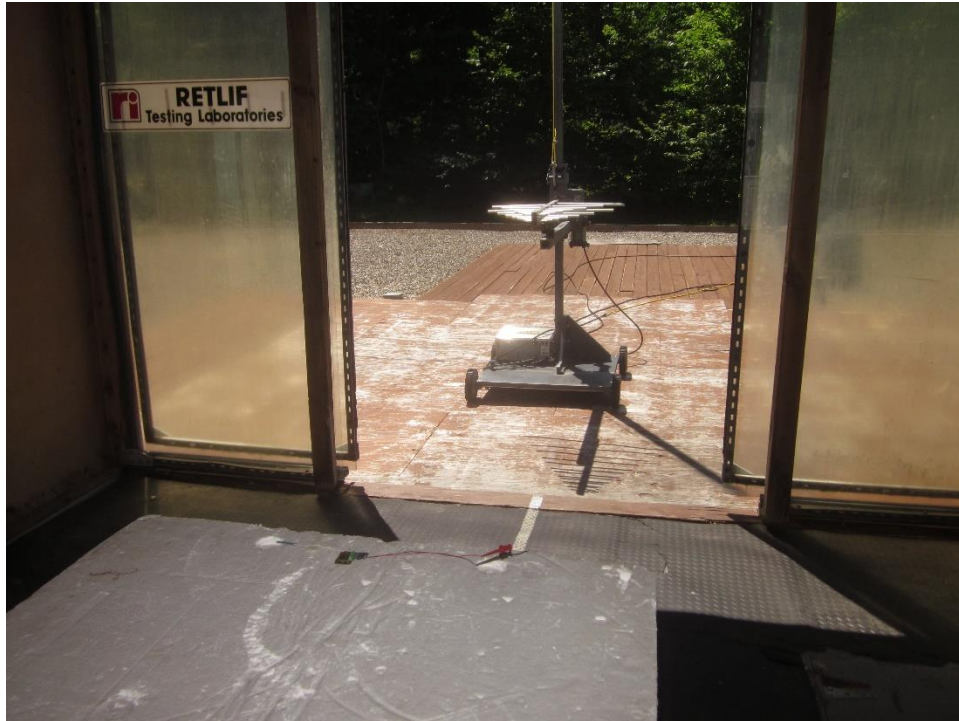
Vertical Antenna Polarization, 30 MHz to 200 MHz, Biconical Antenna,
External Antenna



Retlif Testing Laboratories

Report No. R-6339N-1

Test Photographs Spurious Radiated Emissions



Horizontal Antenna Polarization, 200 MHz to 1 GHz, Log Periodic,
External Antenna



Vertical Antenna Polarization, 200 MHz to 1 GHz, Log Periodic,
External Antenna



Retlif Testing Laboratories

Report No. R-6339N-1

Test Photographs Spurious Radiated Emissions



Horizontal Antenna Polarization, 1 GHz to 18 GHz, Log Periodic,
External Antenna



Vertical Antenna Polarization, 1 GHz to 18 GHz, Log Periodic,
External Antenna



Retlif Testing Laboratories

Report No. R-6339N-1

Test Photographs Spurious Radiated Emissions



Horizontal Antenna Polarization, 18 GHz to 25 GHz, Log Periodic,
External Antenna



Vertical Antenna Polarization, 18 GHz to 25 GHz, Log Periodic,
External Antenna



Retlif Testing Laboratories

Report No. R-6339N-1