



Report No.: RZA2010-0113



OET 65

TEST REPORT

Product Name	Mobile Phone
Model	John's 1
FCC ID	XJG-JOHN1
Client	DESAY A&V SCIENCE AND TECHNOLOGY CO., LTD.

TA Technology (Shanghai) Co., Ltd.



GENERAL SUMMARY

Product Name	Mobile Phone	Model	John's 1
FCC ID	XJG-JOHNS1	Report No.	RZA2010-0113
Client	DESAY A&V SCIENCE AND TECHNOLOGY CO., LTD.		
Manufacturer	DESAY A&V SCIENCE AND TECHNOLOGY CO., LTD.		
Reference Standard(s)	<p>ANSI/IEEE Std C95.1-1999: IEEE Standard for Safety Levels with Respect to Human Exposure to Radio Frequency Electromagnetic Fields, 3 kHz to 300 GHz.</p> <p>IEEE 1528-2003: Recommended Practice for Determining the Peak Spatial-Average Specific Absorption Rate (SAR) in the Human Head Due to Wireless Communications Devices: Experimental Techniques.</p> <p>OET Bulletin 65 supplement C, published June 2001 including DA 02-1438, published June 2002: Additional Information for Evaluating Compliance of Mobile and Portable Devices with FCC Limits. Transition Period for the Phantom Requirements of Supplement C to OET Bulletin 65.</p> <p>IEC 62209-1:2006 Human exposure to radio frequency fields from hand-held and body-mounted wireless communication devices – Human models, instrumentation, and procedures –Part 1: Procedure to determine the Specific Absorption Rate (SAR) for hand-held devices used in close proximity to the ear. (frequency range of 300 MHz to 3 GHz).</p> <p>IEC 62209-2:2008(106/162/CDV): Human exposure to radio frequency fields from handheld and body-mounted wireless communication devices – Human models, instrumentation, and procedures –Part 2: Procedure to determine the Specific Absorption Rate (SAR) for wireless communication devices used in close proximity to the human body. (frequency rang of 30MHz to 6GHz)</p>		
Conclusion	<p>This portable wireless equipment has been measured in all cases requested by the relevant standards. Test results in Chapter 7 of this test report are below limits specified in the relevant standards.</p> <p>General Judgment: Pass</p> <p style="text-align: right;">(Stamp) Date of issue: February 1st, 2010</p>		
Comment	The test result only responds to the measured sample.		

Approved by 杨伟中

Yang Weizhong

Revised by 凌敏宝

Ling Minbao

Performed by 李进昌

Li Jinchang

TABLE OF CONTENT

1. General Information	5
1.1. Notes of the test report	5
1.2. Testing laboratory	5
1.3. Applicant Information	6
1.4. Manufacturer Information	6
1.5. Information of EUT	7
1.6. Test Date	8
2. Operational Conditions during Test	9
2.1. General description of test procedures	9
2.2. GSM Test Configuration	9
3. SAR Measurements System Configuration	10
3.1. SAR Measurement Set-up	10
3.2. DASY4 E-field Probe System	11
3.2.1. EX3DV4 Probe Specification	11
3.2.2. E-field Probe Calibration	12
3.3. Other Test Equipment	12
3.3.1. Device Holder for Transmitters	12
3.3.2. Phantom	13
3.4. Scanning procedure	13
3.5. Data Storage and Evaluation	15
3.5.1. Data Storage	15
3.5.2. Data Evaluation by SEMCAD	15
3.6. System check	18
3.7. Equivalent Tissues	19
4. Laboratory Environment	20
5. Characteristics of the Test	20
5.1. Applicable Limit Regulations	20
5.2. Applicable Measurement Standards	20
6. Conducted Output Power Measurement	21
6.1. Summary	21
6.2. Conducted Power Results	21
7. Test Results	22
7.1. Dielectric Performance	22
7.2. System Check Results	23
7.3. Test Results	24
7.3.1. Summary of Measurement Results (GSM850)	24
7.3.2. Summary of Measurement Results (GSM1900)	25
7.4. Conclusion	25
8. Measurement Uncertainty	26
9. Main Test Instruments	27
ANNEX A: Test Layout	28
ANNEX B: System Check Results	31

TA Technology (Shanghai) Co., Ltd.
Test Report

Report No.: RZA2010-0113

Page 4 of 97

ANNEX C: Graph Results	35
ANNEX D: Probe Calibration Certificate	61
ANNEX E: D835V2 Dipole Calibration Certificate	70
ANNEX F: D1900V2 Dipole Calibration Certificate	79
ANNEX G: DAE4 Calibration Certificate.....	88
ANNEX H: The EUT Appearances and Test Configuration.....	93

1. General Information

1.1. Notes of the test report

TA Technology (Shanghai) Co., Ltd. guarantees the reliability of the data presented in this test report, which is the results of measurements and tests performed for the items under test on the date and under the conditions stated in this test report and is based on the knowledge and technical facilities available at TA Technology (Shanghai) Co., Ltd. at the time of execution of the test.

TA Technology (Shanghai) Co., Ltd. is liable to the client for the maintenance by its personnel of the confidentiality of all information related to the items under test and the results of the test. This report only refers to the item that has undergone the test.

This report standalone dose not constitute or imply by its own an approval of the product by the certification Bodies or competent Authorities. This report cannot be used partially or in full for publicity and/or promotional purposes without previous written approval of **TA Technology (Shanghai) Co., Ltd.** and the Accreditation Bodies, if it applies.

1.2. Testing laboratory

Company: TA Technology (Shanghai) Co., Ltd.
Address: No.145, Jintang Rd, Tangzhen Industry Park, Pudong Shanghai,China
City: Shanghai
Post code: 201201
Country: P. R. China
Contact: Yang Weizhong
Telephone: +86-021-50791141/2/3
Fax: +86-021-50791141/2/3-8000
Website: <http://www.ta-shanghai.com>
E-mail: yangweizhong@ta-shanghai.com

TA Technology (Shanghai) Co., Ltd.
Test Report

Report No.: RZA2010-0113

Page 6 of 97

1.3. Applicant Information

Company: DESAY A&V SCIENCE AND TECHNOLOGY CO., LTD.
Address: DESY 3rd Industry Zone, Zhongkai Road, Chengjiang, Huizhou, Guangdong
City: Huizhou
Postal Code: /
Country: China
Telephone: /
Fax: /

1.4. Manufacturer Information

Company: DESAY A&V SCIENCE AND TECHNOLOGY CO., LTD.
Address: DESY 3rd Industry Zone, Zhongkai Road, Chengjiang, Huizhou, Guangdong
City: Huizhou
Postal Code: /
Country: China
Telephone: /
Fax: /

TA Technology (Shanghai) Co., Ltd.
Test Report

Report No.: RZA2010-0113

Page 7 of 97

1.5. Information of EUT

General information

Device type :	portable device		
Exposure category:	uncontrolled environment / general population		
Product Name:	Mobile Phone		
Device operating configurations :			
Operating mode(s):	GSM850; (tested) GSM1900; (tested)		
Test Modulation:	GMSK		
Operating frequency range(s):	Band	Tx (MHz)	Rx (MHz)
	GSM 850	824.2 ~ 848.8	869.2 ~ 893.8
	GSM 1900	1850.2 ~ 1909.8	1930.2 ~ 1989.8
Power class	GSM 850: 4, tested with power level 5		
	GSM 1900: 1, tested with power level 0		
Test channel (Low –Middle –High)	128 -190 -251	(GSM850)	(tested)
	512 - 661-810	(GSM1900)	(tested)
Hardware version:	DSM918 V1.0		
Software version:	M918_H10S05		
Antenna type:	Internal antenna		

Auxiliary equipment details

AE1: Battery

Model: John's 1
Manufacture: Huizhou Desay Battery Co., Ltd.
IMEI or SN: /

AE2: Travel Adaptor

Model: John's 1
Manufacture: Shenzhen Zhongtian Electronic Co., Ltd.
IMEI or SN: /

Equipment Under Test (EUT) is a model of Mobile Phone with internal antenna. It consists of mobile phone, battery and adaptor and the detail about these is in chapter 1.5 in this report. SAR is tested for GSM850 and GSM 1900.

The sample under test was selected by the Client.

Components list please refer to documents of the manufacturer.

1.6. Test Date

The test is performed from January 27, 2010 to January 28, 2010.

2. Operational Conditions during Test

2.1. General description of test procedures

A communication link is set up with a System Simulator (SS) by air link, and a call is established. The Absolute Radio Frequency Channel Number (ARFCN) is allocated to 128, 190 and 251 in the case of GSM 850, allocated to 512, 661 and 810 in the case of GSM 1900. The EUT is commanded to operate at maximum transmitting power.

Connection to the EUT is established via air interface with E5515C, and the EUT is set to maximum output power by E5515C. The antenna connected to the output of the base station simulator shall be placed at least 50 cm away from the EUT. The signal transmitted by the simulator to the antenna feeding point shall be lower than the output power level of the EUT by at least 30 dB.

2.2. GSM Test Configuration

SAR tests for GSM 850 and GSM 1900, a communication link is set up with a System Simulator (SS) by air link. Using E5515C the power level is set to "5" in head SAR and body SAR of GSM850, set to "0" in head SAR and body SAR of GSM1900. The tests in the band of GSM850 and GSM1900 are performed in the mode of speech transfer function.

3. SAR Measurements System Configuration

3.1. SAR Measurement Set-up

The DASY4 system for performing compliance tests consists of the following items:

- A standard high precision 6-axis robot (Stäubli RX family) with controller and software. An arm extension for accommodating the data acquisition electronics (DAE).
- A dosimetric probe, i.e. an isotropic E-field probe optimized and calibrated for usage in tissue simulating liquid. The probe is equipped with an optical surface detector system.
- A data acquisition electronic (DAE) which performs the signal amplification, signal multiplexing, AD-conversion, offset measurements, mechanical surface detection, collision detection, etc. The unit is battery powered with standard or rechargeable batteries. The signal is optically transmitted to the EOC.
- A unit to operate the optical surface detector which is connected to the EOC.
- The Electro-Optical Coupler (EOC) performs the conversion from the optical into a digital electric signal of the DAE. The EOC is connected to the DASY4 measurement server.
- The DASY4 measurement server, which performs all real-time data evaluation for field measurements and surface detection, controls robot movements and handles safety operation. A computer operating Windows 2003
- DASY4 software and SEMCAD data evaluation software.
- Remote control with teach panel and additional circuitry for robot safety such as warning lamps, etc.
- The generic twin phantom enabling the testing of left-hand and right-hand usage.
- The device holder for handheld mobile phones.
- Tissue simulating liquid mixed according to the given recipes.
- System validation dipoles allowing to validate the proper functioning of the system.

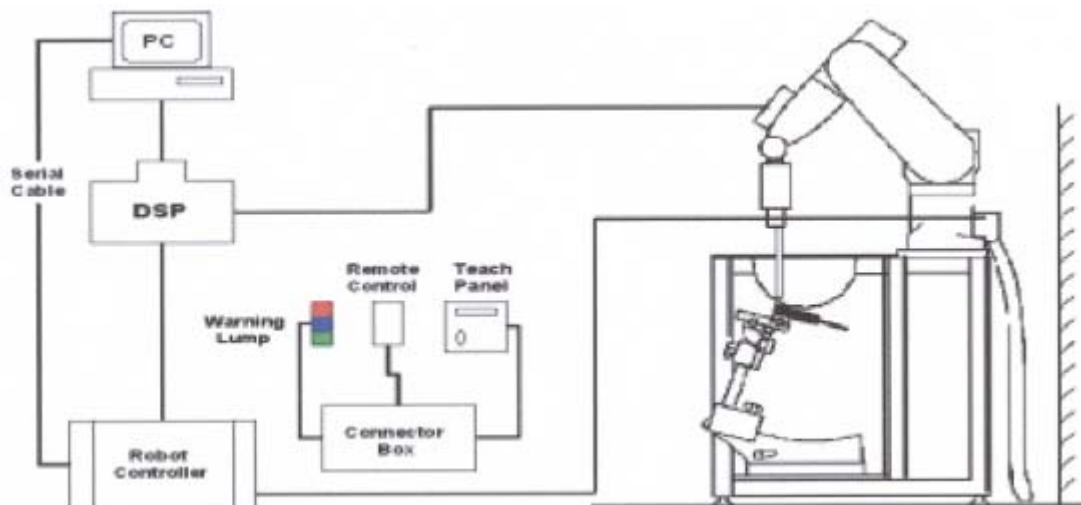


Figure 1 SAR Lab Test Measurement Set-up

3.2. DASY4 E-field Probe System

The SAR measurements were conducted with the dosimetric probe EX3DV4 (manufactured by SPEAG), designed in the classical triangular configuration and optimized for dosimetric evaluation.

3.2.1. EX3DV4 Probe Specification

Construction	Symmetrical design with triangular core Built-in shielding against static charges PEEK enclosure material (resistant to organic solvents, e.g., DGBE)
Calibration	Basic Broad Band Calibration in air Conversion Factors (CF) for HSL 835 ,HSL 900, HSL 1750 and HSL 1950 Additional CF for other liquids and frequencies upon request
Frequency	10 MHz to > 6 GHz Linearity: ± 0.2 dB (30 MHz to 6 GHz)
Directivity	± 0.3 dB in HSL (rotation around probe axis) ± 0.5 dB in tissue material (rotation normal to probe axis)
Dynamic Range	10 μ W/g to > 100 mW/g Linearity: ± 0.2 dB (noise: typically < 1 μ W/g)
Dimensions	Overall length: 330 mm (Tip: 20 mm) Tip diameter: 2.5 mm (Body: 12 mm) Typical distance from probe tip to dipole centers: 1 mm
Application	High precision dosimetric measurements in any exposure scenario (e.g., very strong gradient fields). Only probe which enables compliance testing for frequencies up to 6 GHz with precision of better 30%.



Figure 2. EX3DV4 E-field Probe



Figure 3. EX3DV4 E-field probe

3.2.2. E-field Probe Calibration

Each probe is calibrated according to a dosimetric assessment procedure with accuracy better than $\pm 10\%$. The spherical isotropy was evaluated and found to be better than $\pm 0.25\text{dB}$. The sensitivity parameters (NormX, NormY, NormZ), the diode compression parameter (DCP) and the conversion factor (ConvF) of the probe are tested.

The free space E-field from amplified probe outputs is determined in a test chamber. This is performed in a TEM cell for frequencies below 1 GHz, and in a wave guide above 1 GHz for free space. For the free space calibration, the probe is placed in the volumetric center of the cavity and at the proper orientation with the field. The probe is then rotated 360 degrees.

E-field temperature correlation calibration is performed in a flat phantom filled with the appropriate simulated brain tissue. The measured free space E-field in the medium correlates to temperature rise in a dielectric medium. For temperature correlation calibration a RF transparent thermistor-based temperature probe is used in conjunction with the E-field probe.

$$\text{SAR} = C \frac{\Delta T}{\Delta t}$$

Where: Δt = Exposure time (30 seconds),
C = Heat capacity of tissue (brain or muscle),
 ΔT = Temperature increase due to RF exposure.
Or

$$\text{SAR} = \frac{|E|^2 \sigma}{\rho}$$

Where:
 σ = Simulated tissue conductivity,
 ρ = Tissue density (kg/m³).

3.3. Other Test Equipment

3.3.1. Device Holder for Transmitters

The DASY device holder is designed to cope with the different positions given in the standard.

It has two scales for device rotation (with respect to the body axis) and device inclination (with respect to the line between the ear reference points). The rotation centers for both scales is the ear reference point (ERP). Thus the device needs no repositioning when changing the angles.

The amount of dielectric material has been reduced in the closest vicinity of the device, since measurements have suggested that the inference of the clamp on the test results could thus be lowered.



Figure 4 Device Holder

3.3.2. Phantom

The Generic Twin Phantom is constructed of a fiberglass shell integrated in a wooden Figure. The shape of the shell is based on data from an anatomical study designed to determine the maximum exposure in at least 90% of all users. It enables the dosimetric evaluation of left and right hand phone usage as well as body mounted usage at the flat phantom region. A cover prevents the evaporation of the liquid. Reference markings on the Phantom allow the complete setup of all predefined phantom positions and measurement grids by manually teaching three points in the robot.

Shell Thickness	2±0.1 mm
Filling Volume	Approx. 20 liters
Dimensions	810 x 1000 x 500 mm (H x L x W)
Available	Special



Figure 5 Generic Twin Phantom

3.4. Scanning procedure

The DASY4 installation includes predefined files with recommended procedures for measurements and validation. They are read-only document files and destined as fully defined but unmeasured masks. All test positions (head or body-worn) are tested with the same configuration of test steps differing only in the grid definition for the different test positions.

- The "reference" and "drift" measurements are located at the beginning and end of the batch process. They measure the field drift at one single point in the liquid over the complete procedure. The indicated drift is mainly the variation of the DUT's output power and should vary max. ± 5 %.
- The "surface check" measurement tests the optical surface detection system of the DASY4 system by repeatedly detecting the surface with the optical and mechanical surface detector and comparing the results. The output gives the detecting heights of both systems, the difference between the two systems and the standard deviation of the detection repeatability. Air bubbles or refraction in the liquid due to separation of the sugar-water mixture gives poor repeatability (above ± 0.1mm). To prevent wrong results tests are only executed when the liquid is free of air bubbles. The difference between the optical surface detection and the actual surface depends on the probe and is specified with each probe. (It does not depend on the surface reflectivity or the probe angle to the surface within ± 30°.)
- Area Scan
The Area Scan is used as a fast scan in two dimensions to find the area of high field values

before running a detailed measurement around the hot spot. Before starting the area scan a grid spacing of 15 mm x 15 mm is set. During the scan the distance of the probe to the phantom remains unchanged.

After finishing area scan, the field maxima within a range of 2 dB will be ascertained.

- **Zoom Scan**

Zoom Scans are used to estimate the peak spatial SAR values within a cubic averaging volume containing 1 g and 10 g of simulated tissue. The default Zoom Scan is done by 7x7x7 points within a cube whose base is centered around the maxima found in the preceding area scan.

- **Spatial Peak Detection**

The procedure for spatial peak SAR evaluation has been implemented and can determine values of masses of 1g and 10g, as well as for user-specific masses. The DASY4 system allows evaluations that combine measured data and robot positions, such as:

- maximum search
- extrapolation
- boundary correction
- peak search for averaged SAR

During a maximum search, global and local maxima searches are automatically performed in 2-D after each Area Scan measurement with at least 6 measurement points. It is based on the evaluation of the local SAR gradient calculated by the Quadratic Shepard's method. The algorithm will find the global maximum and all local maxima within -2 dB of the global maxima for all SAR distributions.

Extrapolation routines are used to obtain SAR values between the lowest measurement points and the inner phantom surface. The extrapolation distance is determined by the surface detection distance and the probe sensor offset. Several measurements at different distances are necessary for the extrapolation. Extrapolation routines require at least 10 measurement points in 3-D space. They are used in the Zoom Scan to obtain SAR values between the lowest measurement points and the inner phantom surface. The routine uses the modified Quadratic Shepard's method for extrapolation. For a grid using 7x7x7 measurement points with 5mm resolution amounting to 343 measurement points, the uncertainty of the extrapolation routines is less than 1% for 1g and 10g cubes.

- A Z-axis scan measures the total SAR value at the x-and y-position of the maximum SAR value found during the cube 7x7x7 scan. The probe is moved away in z-direction from the bottom of the SAM phantom in 5mm steps.

3.5. Data Storage and Evaluation

3.5.1. Data Storage

The DASY4 software stores the acquired data from the data acquisition electronics as raw data (in microvolt readings from the probe sensors), together with all necessary software parameters for the data evaluation (probe calibration data, liquid parameters and device frequency and modulation data) in measurement files with the extension ".DA4". The software evaluates the desired unit and format for output each time the data is visualized or exported. This allows verification of the complete software setup even after the measurement and allows correction of incorrect parameter settings. For example, if a measurement has been performed with a wrong crest factor parameter in the device setup, the parameter can be corrected afterwards and the data can be re-evaluated.

The measured data can be visualized or exported in different units or formats, depending on the selected probe type ([V/m], [A/m], [°C], [mW/g], [mW/cm²], [dBrel], etc.). Some of these units are not available in certain situations or show meaningless results, e.g., a SAR output in a lossless media will always be zero. Raw data can also be exported to perform the evaluation with other software packages.

3.5.2. Data Evaluation by SEMCAD

The SEMCAD software automatically executes the following procedures to calculate the field units from the microvolt readings at the probe connector. The parameters used in the evaluation are stored in the configuration modules of the software:

Probe parameters:	- Sensitivity	Norm _i , a _{i0} , a _{i1} , a _{i2}
	- Conversion factor	ConvF _i
	- Diode compression point	Dcp _i
Device parameters:	- Frequency	f
	- Crest factor	cf
Media parameters:	- Conductivity	
	- Density	

These parameters must be set correctly in the software. They can be found in the component documents or they can be imported into the software from the configuration files issued for the DASY4 components. In the direct measuring mode of the multimeter option, the parameters of the actual system setup are used. In the scan visualization and export modes, the parameters stored in the corresponding document files are used.

The first step of the evaluation is a linearization of the filtered input signal to account for the compression characteristics of the detector diode. The compensation depends on the input signal, the diode type and the DC-transmission factor from the diode to the evaluation electronics.

TA Technology (Shanghai) Co., Ltd.
Test Report

Report No.: RZA2010-0113

Page 16 of 97

If the exciting field is pulsed, the crest factor of the signal must be known to correctly compensate for peak power. The formula for each channel can be given as:

$$V_i = U_i + U_i^2 \cdot c f / d c p_i$$

With V_i = compensated signal of channel i (i = x, y, z)

U_i = input signal of channel i (i = x, y, z)

cf = crest factor of exciting field (DASY parameter)

dcp_i = diode compression point (DASY parameter)

From the compensated input signals the primary field data for each channel can be evaluated:

E-field probes: $E_i = (V_i / Norm_i \cdot ConvF)^{1/2}$

H-field probes: $H_i = (V_i)^{1/2} \cdot (a_{i0} + a_{i1} f + a_{i2} f^2) / f$

With V_i = compensated signal of channel i (i = x, y, z)

$Norm_i$ = sensor sensitivity of channel i (i = x, y, z)
[mV/(V/m)²] for E-field Probes

$ConvF$ = sensitivity enhancement in solution

a_{ij} = sensor sensitivity factors for H-field probes

f = carrier frequency [GHz]

E_i = electric field strength of channel i in V/m

H_i = magnetic field strength of channel i in A/m

The RSS value of the field components gives the total field strength (Hermitian magnitude):

$$E_{tot} = (E_x^2 + E_y^2 + E_z^2)^{1/2}$$

The primary field data are used to calculate the derived field units.

$$SAR = (E_{tot}^2 \cdot \dots) / (\dots \cdot 1000)$$

TA Technology (Shanghai) Co., Ltd.
Test Report

Report No.: RZA2010-0113

Page 17 of 97

with **SAR** = local specific absorption rate in mW/g

E_{tot} = total field strength in V/m

σ = conductivity in [mho/m] or [Siemens/m]

ρ = equivalent tissue density in g/cm³

Note that the density is normally set to 1 (or 1.06), to account for actual brain density rather than the density of the simulation liquid. The power flow density is calculated assuming the excitation field to be a free space field.

$$P_{pwe} = E_{tot}^2 / 3770 \quad \text{or} \quad P_{pwe} = H_{tot}^2 \cdot 37.7$$

with **P_{pwe}** = equivalent power density of a plane wave in mW/cm²

E_{tot} = total electric field strength in V/m

H_{tot} = total magnetic field strength in A/m

3.6. System check

The manufacturer calibrates the probes annually. Dielectric parameters of the tissue simulates were measured every day using the dielectric probe kit and the network analyzer. A system check measurement was made following the determination of the dielectric parameters of the simulates, using the dipole validation kit. A power level of 250 mW was supplied to the dipole antenna, which was placed under the flat section of the twin SAM phantom. The system check results (dielectric parameters and SAR values) are given in the table 7 and table 8.

System check results have to be equal or near the values determined during dipole calibration with the relevant liquids and test system ($\pm 10\%$).

System check is performed regularly on all frequency bands where tests are performed with the DASY4 system.

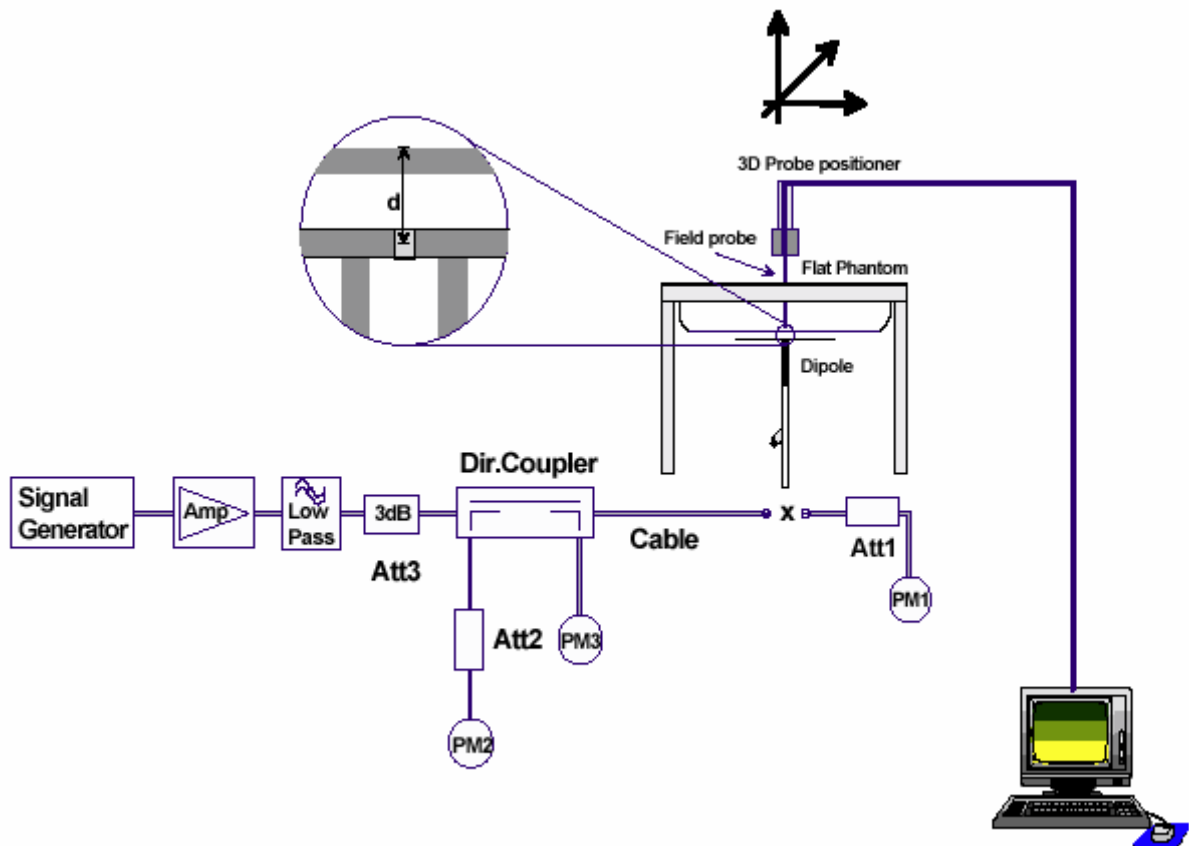


Figure 6 System Check Set-up

TA Technology (Shanghai) Co., Ltd.
Test Report

3.7. Equivalent Tissues

The liquid is consisted of water, salt, Glycol, Sugar, Preventol and Cellulose. The liquid has previously been proven to be suited for worst-case. The Table 1 and Table 2 show the detail solution. It's satisfying the latest tissue dielectric parameters requirements proposed by the OET 65.

Table 1: Composition of the Head Tissue Equivalent Matter

MIXTURE%	FREQUENCY(Brain) 835MHz
Water	41.45
Sugar	56
Salt	1.45
Preventol	0.1
Cellulose	1.0
Dielectric Parameters Target Value	f=835MHz $\epsilon=41.5$ $\sigma=0.9$

MIXTURE%	FREQUENCY(Brain)1900MHz
Water	55.242
Glycol monobutyl	44.452
Salt	0.306
Dielectric Parameters Target Value	f=1900MHz $\epsilon=40.0$ $\sigma=1.40$

Table 2: Composition of the Body Tissue Equivalent Matter

MIXTURE%	FREQUENCY(Body)835MHz
Water	52.5
Sugar	45
Salt	1.4
Preventol	0.1
Cellulose	1.0
Dielectric Parameters Target Value	f=835MHz $\epsilon=55.2$ $\sigma=0.97$

MIXTURE%	FREQUENCY (Body) 1900MHz
Water	69.91
Glycol monobutyl	29.96
Salt	0.13
Dielectric Parameters Target Value	f=1900MHz $\epsilon=53.3$ $\sigma=1.52$

4. Laboratory Environment

Table 3: The Ambient Conditions during Test

Temperature	Min. = 20°C, Max. = 25 °C
Relative humidity	Min. = 30%, Max. = 70%
Ground system resistance	< 0.5 Ω
Ambient noise is checked and found very low and in compliance with requirement of standards.	
Reflection of surrounding objects is minimized and in compliance with requirement of standards.	

5. Characteristics of the Test

5.1. Applicable Limit Regulations

ANSI/IEEE Std C95.1-1999: IEEE Standard for Safety Levels with Respect to Human Exposure to Radio Frequency Electromagnetic Fields, 3 kHz to 300 GHz.

It specifies the maximum exposure limit of 1.6 W/kg as averaged over any 1 gram of tissue for portable devices being used within 20 cm of the user in the uncontrolled environment.

5.2. Applicable Measurement Standards

IEEE 1528–2003: Recommended Practice for Determining the Peak Spatial-Average Specific Absorption Rate (SAR) in the Human Head Due to Wireless Communications Devices: Experimental Techniques.

OET Bulletin 65 supplement C, published June 2001 including DA 02-1438, published June 2002: Additional Information for Evaluating Compliance of Mobile and Portable Devices with FCC Limits. Transition Period for the Phantom Requirements of Supplement C to OET Bulletin 65.

IEC 62209-1:2006 Human exposure to radio frequency fields from hand-held and body-mounted wireless communication devices – Human models, instrumentation, and procedures –Part 1: Procedure to determine the Specific Absorption Rate (SAR) for hand-held devices used in close proximity to the ear. (frequency range of 300 MHz to 3 GHz).

IEC 62209-2:2008(106/162/CDV):: Human exposure to radio frequency fields from handheld and body-mounted wireless communication devices – Human models, instrumentation, and procedures –Part 2: Procedure to determine the Specific Absorption Rate (SAR) for wireless communication devices used in close proximity to the human body. (frequency rang of 30MHz to 6GHz)

6. Conducted Output Power Measurement

6.1. Summary

The DUT is tested using an E5515C communications tester as controller unit to set test channels and maximum output power to the DUT, as well as for measuring the conducted peak power. Conducted output power was measured using an integrated RF connector and attached RF cable. This result contains conducted output power for the EUT.

6.2. Conducted Power Results

Table 4: Conducted Power Measurement Results

GSM 850	Conducted Power		
	Channel 128	Channel 190	Channel 251
	(824.2MHz)	(836.6MHz)	(848.8MHz)
Before Test (dBm)	31.81	32.08	31.18
After Test (dBm)	31.81	32.08	31.18
GSM 1900	Conducted Power		
	Channel 512	Channel 661	Channel 810
	(1850.2MHz)	(1880MHz)	(1909.8MHz)
Before Test (dBm)	29.11	29.28	28.61
After Test (dBm)	29.11	29.28	28.61

7. Test Results

7.1. Dielectric Performance

Table 5: Dielectric Performance of Head Tissue Simulating Liquid

Frequency	Description	Dielectric Parameters		Temp °C
		ϵ_r	σ (s/m)	
835MHz (head)	Target value ± 5% window	41.50 39.43 — 43.58	0.90 0.86 — 0.95	/
	Measurement value 2010-1-28	42.19	0.91	21.8
1900MHz (head)	Target value ±5% window	40.00 38.00 — 42.00	1.40 1.33 — 1.47	/
	Measurement value 2010-1-27	40.03	1.38	21.9

Table 6: Dielectric Performance of Body Tissue Simulating Liquid

Frequency	Description	Dielectric Parameters		Temp °C
		ϵ_r	σ (s/m)	
835MHz (body)	Target value ±5% window	55.20 52.44 — 57.96	0.97 0.92 — 1.02	/
	Measurement value 2010-1-28	54.87	0.98	21.8
1900MHz (body)	Target value ±5% window	53.30 50.64 — 55.97	1.52 1.44 — 1.60	/
	Measurement value 2010-1-27	52.75	1.52	21.9

TA Technology (Shanghai) Co., Ltd.
Test Report

Report No.: RZA2010-0113

Page 23 of 97

7.2. System Check Results

Table 7: System Check for Head tissue simulation liquid

Frequency	Description	SAR(W/kg)		Dielectric Parameters		Temp
		10g	1g	ϵ_r	σ (s/m)	°C
835MHz	Recommended value ±10% window	1.58 1.42 - 1.74	2.42 2.18 - 2.66	40.5	0.89	/
	Measurement value 2010-1-28	1.62	2.48	42.19	0.91	21.9
1900MHz	Recommended value ±10% window	5.38 4.84 - 5.92	10.3 9.27 - 11.33	41	1.42	/
	Measurement value 2010-1-27	5.46	10.6	40.03	1.38	22.1

Note: 1. the graph results see ANNEX B.

2. Recommended Values used derive from the calibration certificate and 250 mW is used as feeding power to the calibrated dipole.

Table 8: System Check for Body tissue simulation liquid

Frequency	Description	SAR(W/kg)		Dielectric Parameters		Temp
		10g	1g	ϵ_r	σ (s/m)	°C
835MHz	Recommended value ±10% window	1.68 1.51 - 1.85	2.56 2.30 - 2.82	53	0.99	/
	Measurement value 2010-1-28	1.68	2.56	54.87	0.98	21.9
1900 MHz	Recommended value ±10% window	5.52 4.97 - 6.07	10.5 9.45 - 11.55	54	1.55	/
	Measurement value 2010-1-27	5.17	9.73	52.75	1.52	21.7

Note: 1. The graph results see ANNEX B.

2. Recommended Values used derive from the calibration certificate and 250 mW is used as feeding power to the Calibrated dipole.

TA Technology (Shanghai) Co., Ltd.

Test Report

7.3. Test Results

7.3.1. Summary of Measurement Results (GSM850)

Table 9: SAR Values (GSM850)

Limit of SAR (W/kg)		10 g Average	1 g Average	Power Drift (dB)	Graph Results
		2.0	1.6	± 0.21	
Test Case Of Head		Measurement Result(W/kg)		Power Drift(dB)	
Different Test Position	Channel	10 g Average	1 g Average		
Test position of Head					
Left hand, Touch cheek	High	0.668	1.040	0.057	Figure 11
	Middle	0.564	0.867	0.134	Figure 12
	Low	0.474	0.729	0.053	Figure 13
Left hand, Tilt 15 Degree	Middle	0.225	0.302	0.107	Figure 14
Right hand, Touch cheek	Middle	0.489	0.705	-0.049	Figure 15
Right hand, Tilt 15 Degree	Middle	0.233	0.318	0.044	Figure 16
Test position of Body (Distance 15mm)					
Towards Ground	High	0.497	0.685	-0.036	Figure 17
	Middle	0.445	0.610	-0.014	Figure 18
	Low	0.382	0.523	-0.015	Figure 19
Towards Phantom	Middle	0.349	0.496	0.034	Figure 20
Worst case position of Body with Earphone (Distance 15mm)					
Towards Ground	High	0.299	0.417	-0.158	Figure 21

Note: 1. The value with blue color is the maximum SAR Value of test case of head and body in each test band.

2. Upper and lower frequencies were measured at the worst position.
3. The SAR test shall be performed at the high, middle and low frequency channels of each operating mode. If the SAR measured at mid-band channel for each test configuration is at least 3.0 dB lower than the SAR limit (< 0.8W/kg), testing at the high and low channels is optional.

TA Technology (Shanghai) Co., Ltd.

Test Report

7.3.2. Summary of Measurement Results (GSM1900)

Table 10: SAR Values (GSM1900)

Limit of SAR (W/kg)		10 g Average	1 g Average	Power Drift (dB)	Graph Results
		2.0	1.6	± 0.21	
Test Case Of Head		Measurement Result(W/kg)		Power Drift(dB)	
Different Test Position	Channel	10 g Average	1 g Average		
Test position of Head					
Left hand, Touch cheek	High	0.628	1.170	-0.007	Figure 22
	Middle	0.495	0.907	-0.040	Figure 23
	Low	0.452	0.818	-0.076	Figure 24
Left hand, Tilt 15 Degree	Middle	0.091	0.143	-0.022	Figure 25
Right hand, Touch cheek	Middle	0.382	0.660	0.023	Figure 26
Right hand, Tilt 15 Degree	Middle	0.090	0.140	-0.041	Figure 27
Test position of Body (Distance 15mm)					
Towards Ground	Middle	0.089	0.149	0.023	Figure 28
Towards Phantom	High	0.131	0.227	-0.037	Figure 29
	Middle	0.097	0.167	-0.041	Figure 30
	Low	0.073	0.123	-0.101	Figure 31
Worst case position of Body with Earphone (Distance 15mm)					
Towards Phantom	High	0.117(max)	0.204(max)	0.023	Figure 32

Note: 1. The value with blue color is the maximum SAR Value of test case of head and body in each test band.

2. Upper and lower frequencies were measured at the worst position.
3. The SAR test shall be performed at the high, middle and low frequency channels of each operating mode. If the SAR measured at mid-band channel for each test configuration is at least 3.0 dB lower than the SAR limit (< 0.8W/kg), testing at the high and low channels is optional.
4. The (max) labeling indicates that during the grid scanning an additional peak was found which was within 2.0dB of the highest peak. The value of the highest cube is given in the table above; the value from the second assessed cube is given in the SAR distribution plots (See ANNEX C).

7.4. Conclusion

Localized Specific Absorption Rate (SAR) of this portable wireless device has been measured in all cases requested by the relevant standards cited in Clause 5.2 of this report. Maximum localized SAR_{1g} are 1.17 W/kg (head) and 0.685 W/kg (body) that are below exposure limits specified in the relevant standards cited in Clause 5.1 of this test report.

TA Technology (Shanghai) Co., Ltd.
Test Report

Report No.: RZA2010-0113

Page 26 of 97

8. Measurement Uncertainty

No.	source	Type	Uncertainty Value (%)	Probability Distribution	k	c _i	Standard uncertainty u _i (%)	Degree of freedom V _{eff} or v _i
1	System repetivity	A	0.5	N	1	1	0.5	9
Measurement system								
2	probe calibration	B	5.9	N	1	1	5.9	∞
3	axial isotropy of the probe	B	4.7	R	$\sqrt{3}$	$\sqrt{0.5}$	1.9	∞
4	Hemispherical isotropy of the probe	B	9.4	R	$\sqrt{3}$	$\sqrt{0.5}$	3.9	∞
6	boundary effect	B	1.9	R	$\sqrt{3}$	1	1.1	∞
7	probe linearity	B	4.7	R	$\sqrt{3}$	1	2.7	∞
8	System detection limits	B	1.0	R	$\sqrt{3}$	1	0.6	∞
9	readout Electronics	B	1.0	N	1	1	1.0	∞
10	response time	B	0	R	$\sqrt{3}$	1	0	∞
11	integration time	B	4.32	R	$\sqrt{3}$	1	2.5	∞
12	noise	B	0	R	$\sqrt{3}$	1	0	∞
13	RF Ambient Conditions	B	3	R	$\sqrt{3}$	1	1.73	∞
14	Probe Positioner Mechanical Tolerance	B	0.4	R	$\sqrt{3}$	1	0.2	∞
15	Probe Positioning with respect to Phantom Shell	B	2.9	R	$\sqrt{3}$	1	1.7	∞
16	Extrapolation, interpolation and Integration Algorithms for Max. SAR Evaluation	B	3.9	R	$\sqrt{3}$	1	2.3	∞
Test sample Related								
17	-Test Sample Positioning	A	2.9	N	1	1	2.9	5
18	-Device Holder Uncertainty	A	4.1	N	1	1	4.1	5
19	-Output Power Variation - SAR drift measurement	B	5.0	R	$\sqrt{3}$	1	2.9	∞
Physical parameter								

TA Technology (Shanghai) Co., Ltd.

Test Report

Report No.: RZA2010-0113

Page 27 of 97

20	-phantom	B	4.0	R	$\sqrt{3}$	1	2.3	∞	
21	-liquid conductivity (deviation from target)	B	5.0	R	$\sqrt{3}$	$\frac{0.6}{4}$	1.8	∞	
22	-liquid conductivity (measurement uncertainty)	B	5.0	N	1	$\frac{0.6}{4}$	3.2	∞	
23	-liquid permittivity (deviation from target)	B	5.0	R	$\sqrt{3}$	0.6	1.7	∞	
24	-liquid permittivity (measurement uncertainty)	B	5.0	N	1	0.6	3.0	∞	
Combined standard uncertainty		$u_c' = \sqrt{\sum_{i=1}^{21} c_i^2 u_i^2}$						12.0	
Expanded uncertainty (confidence interval of 95 %)		$u_e = 2u_c$		N	k=2		24.0		

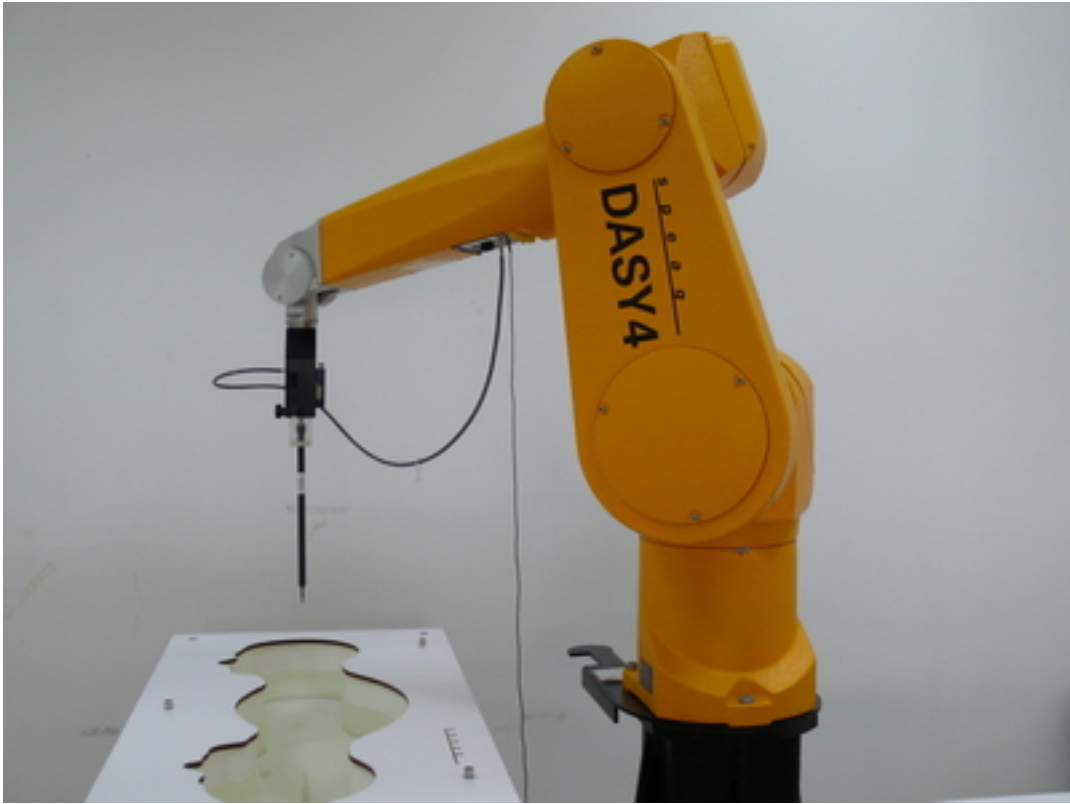
9. Main Test Instruments

Table 11: List of Main Instruments

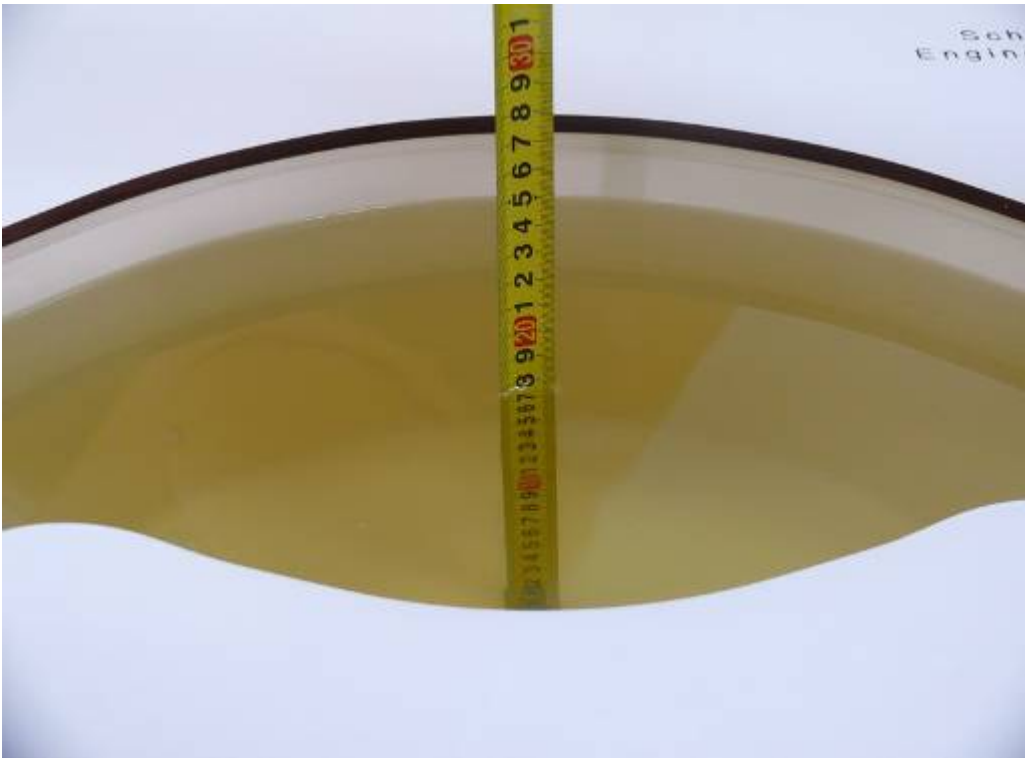
No.	Name	Type	Serial Number	Calibration Date	Valid Period
01	Network analyzer	Agilent 8753E	US37390326	September 13, 2009	One year
02	Dielectric Probe Kit	Agilent 85070E	US44020115	No Calibration Requested	
03	Power meter	Agilent E4417A	GB41291714	March 14, 2009	One year
04	Power sensor	Agilent 8481H	MY41091316	March 14, 2009	One year
05	Signal Generator	HP 8341B	2730A00804	September 13, 2009	One year
06	Amplifier	IXA-020	0401	No Calibration Requested	
07	BTS	E5515C	MY48360988	December 4, 2009	One year
08	E-field Probe	EX3DV4	3677	September 23, 2009	One year
09	DAE	DAE4	905	June 24, 2009	One year
10	Validation Kit 835MHz	D835V2	4d082	July 13, 2009	One year
11	Validation Kit 1900MHz	D1900V2	5d018	June 26, 2009	One year

*****END OF REPORT BODY*****

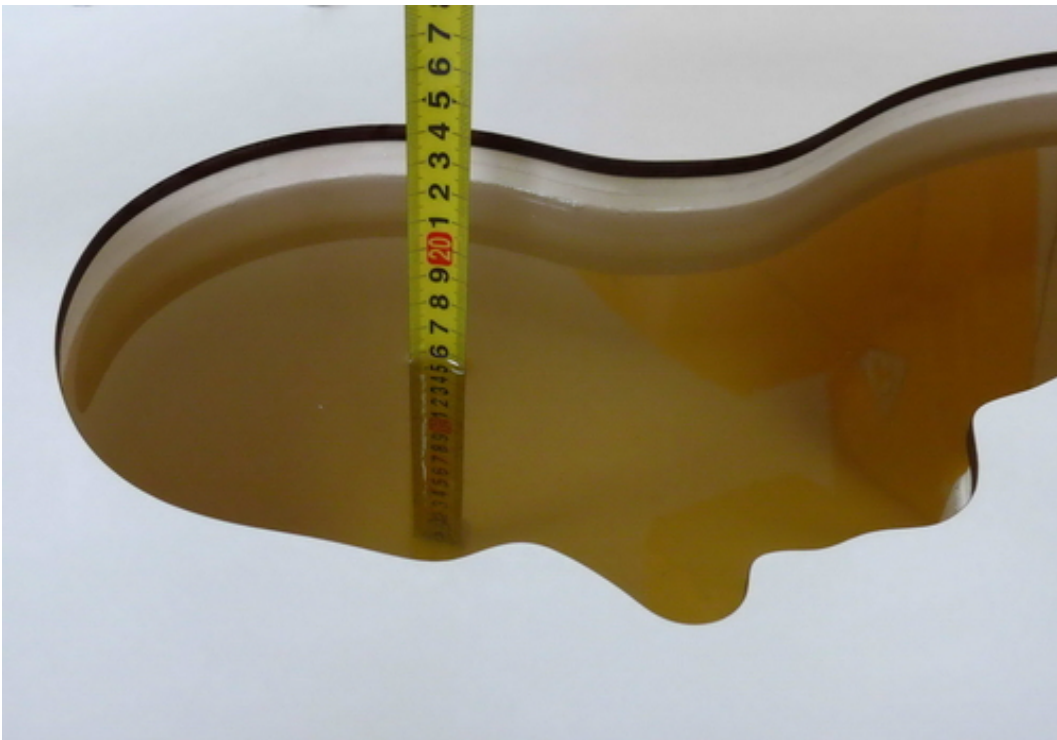
ANNEX A: Test Layout



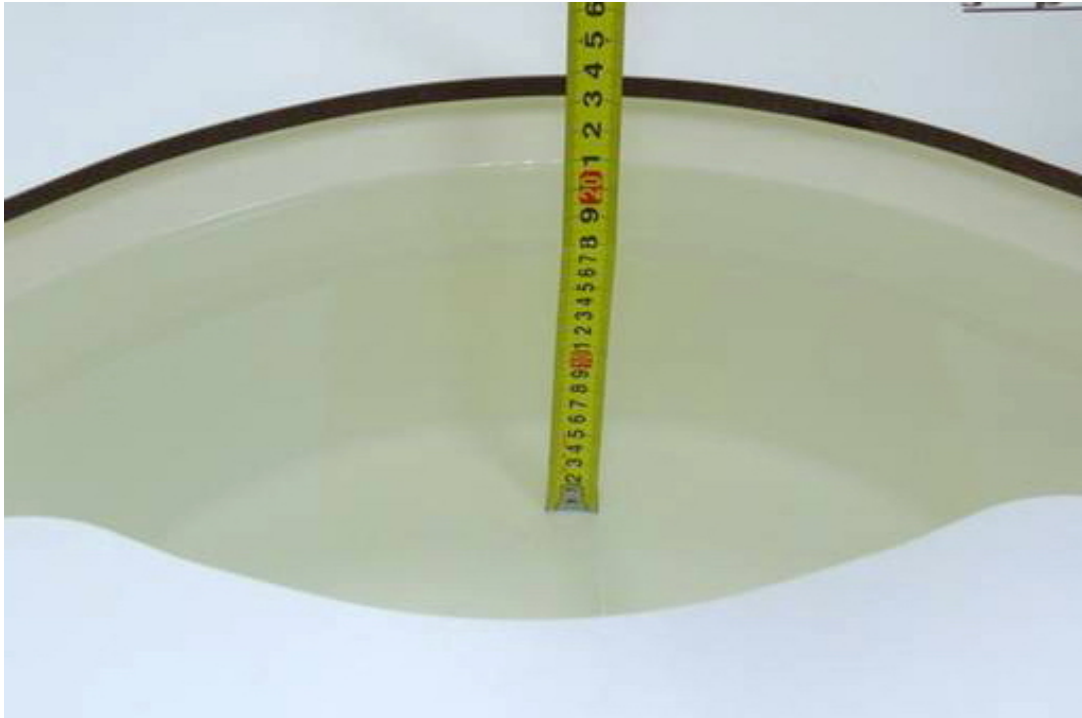
Picture 1: Specific Absorption Rate Test Layout



Picture 2: Liquid depth in the flat Phantom (835MHz)



Picture 3: Liquid depth in the head Phantom (835MHz)



Picture 4: Liquid depth in the flat Phantom (1900 MHz)



Picture 5: Liquid depth in the head Phantom (1900 MHz)

ANNEX B: System Check Results

System Performance Check at 835 MHz Head TSL

DUT: Dipole 835 MHz; Type: D835V2; Serial: D835V2 - SN:4d082

Date/Time: 1/28/2010 9:00:02 AM

Communication System: CW; Frequency: 835 MHz; Duty Cycle: 1:1

Medium parameters used: $f = 835 \text{ MHz}$; $\sigma = 0.91 \text{ mho/m}$; $\epsilon_r = 42.19$; $\rho = 1000 \text{ kg/m}^3$

Ambient Temperature: 22.3 °C Liquid Temperature: 21.5 °C

DASY4 Configuration:

Probe: EX3DV4 - SN3677; ConvF(9.2, 9.2, 9.2); Calibrated: 9/23/2009

Electronics: DAE4 Sn905; Calibrated: 6/24/2009

Phantom: SAM 12; Type: SAM V4.0; Serial: TP-1246

Measurement SW: DASY4, V4.7 Build 80; Postprocessing SW: SEMCAD, V1.8 Build 186

835 MHz Dipole/Area Scan (41x121x1): Measurement grid: $dx=15\text{mm}$, $dy=15\text{mm}$

Maximum value of SAR (interpolated) = 2.71 mW/g

835 MHz Dipole/Zoom Scan (7x7x7)/Cube 0: Measurement grid: $dx=5\text{mm}$, $dy=5\text{mm}$, $dz=5\text{mm}$

Reference Value = 55.5 V/m; Power Drift = -0.092 dB

Peak SAR (extrapolated) = 3.75 W/kg

SAR(1 g) = 2.48 mW/g; SAR(10 g) = 1.62 mW/g

Maximum value of SAR (measured) = 2.67 mW/g

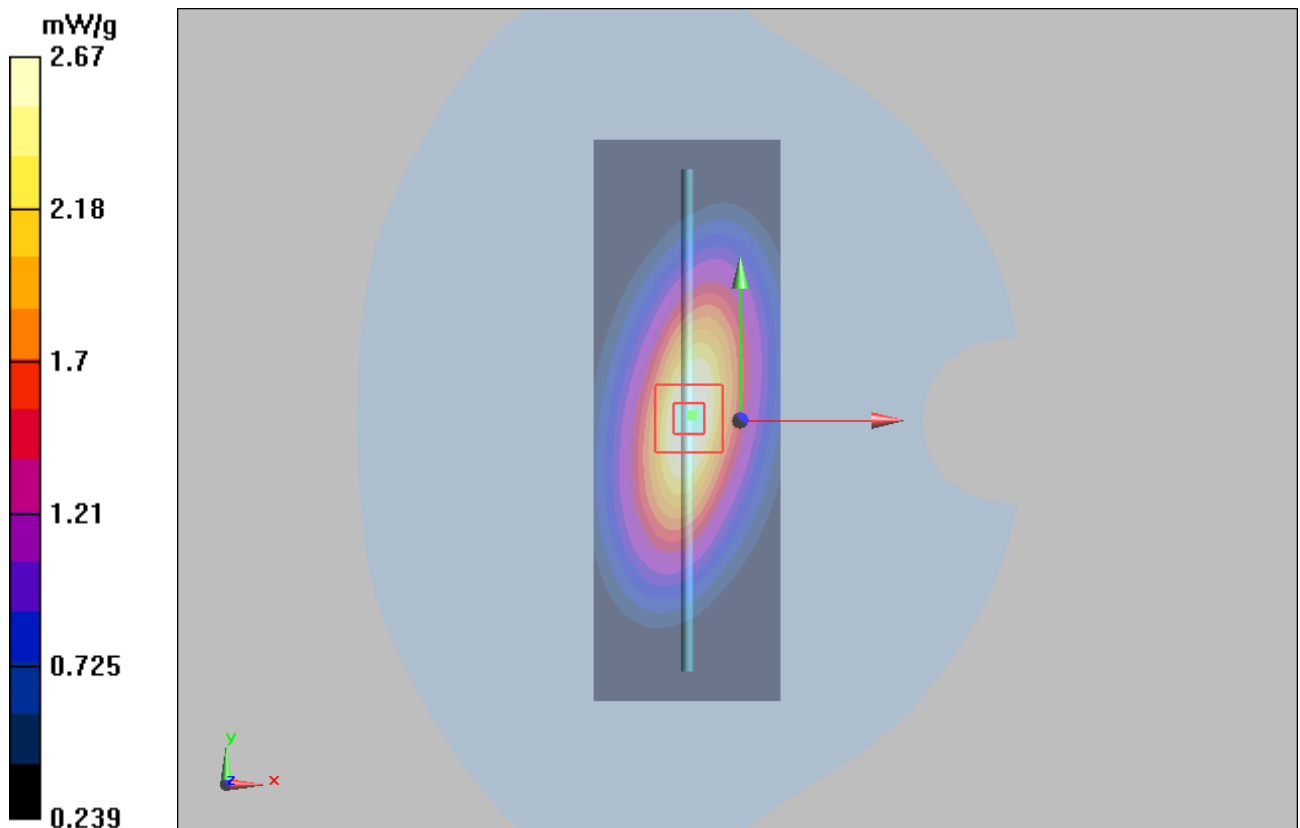


Figure 7 System Performance Check 835MHz 250mW

System Performance Check at 835 MHz Body TSL

DUT: Dipole 835 MHz; Type: D835V2; Serial: D835V2 - SN:4d082

Date/Time: 1/28/2010 7:30:20 PM

Communication System: CW; Frequency: 835 MHz; Duty Cycle: 1:1

Medium parameters used: $f = 835$ MHz; $\sigma = 0.98$ mho/m; $\epsilon_r = 54.87$; $\rho = 1000$ kg/m³

Ambient Temperature: 22.3 °C Liquid Temperature: 21.5 °C

DASY4 Configuration:

Probe: EX3DV4 - SN3677; ConvF(9.11, 9.11, 9.11); Calibrated: 9/23/2009

Electronics: DAE4 Sn905; Calibrated: 6/24/2009

Phantom: SAM 12; Type: SAM V4.0; Serial: TP-1246

Measurement SW: DASY4, V4.7 Build 80; Postprocessing SW: SEMCAD, V1.8 Build 186

835 MHz Dipole/Area Scan (61x121x1): Measurement grid: dx=15mm, dy=15mm

Maximum value of SAR (interpolated) = 2.77 mW/g

835 MHz Dipole/Zoom Scan (7x7x7)/Cube 0: Measurement grid: dx=5mm, dy=5mm, dz=5mm

Reference Value = 50.9 V/m; Power Drift = 0.023 dB

Peak SAR (extrapolated) = 3.68 W/kg

SAR(1 g) = 2.56 mW/g; SAR(10 g) = 1.68 mW/g

Maximum value of SAR (measured) = 2.77 mW/g

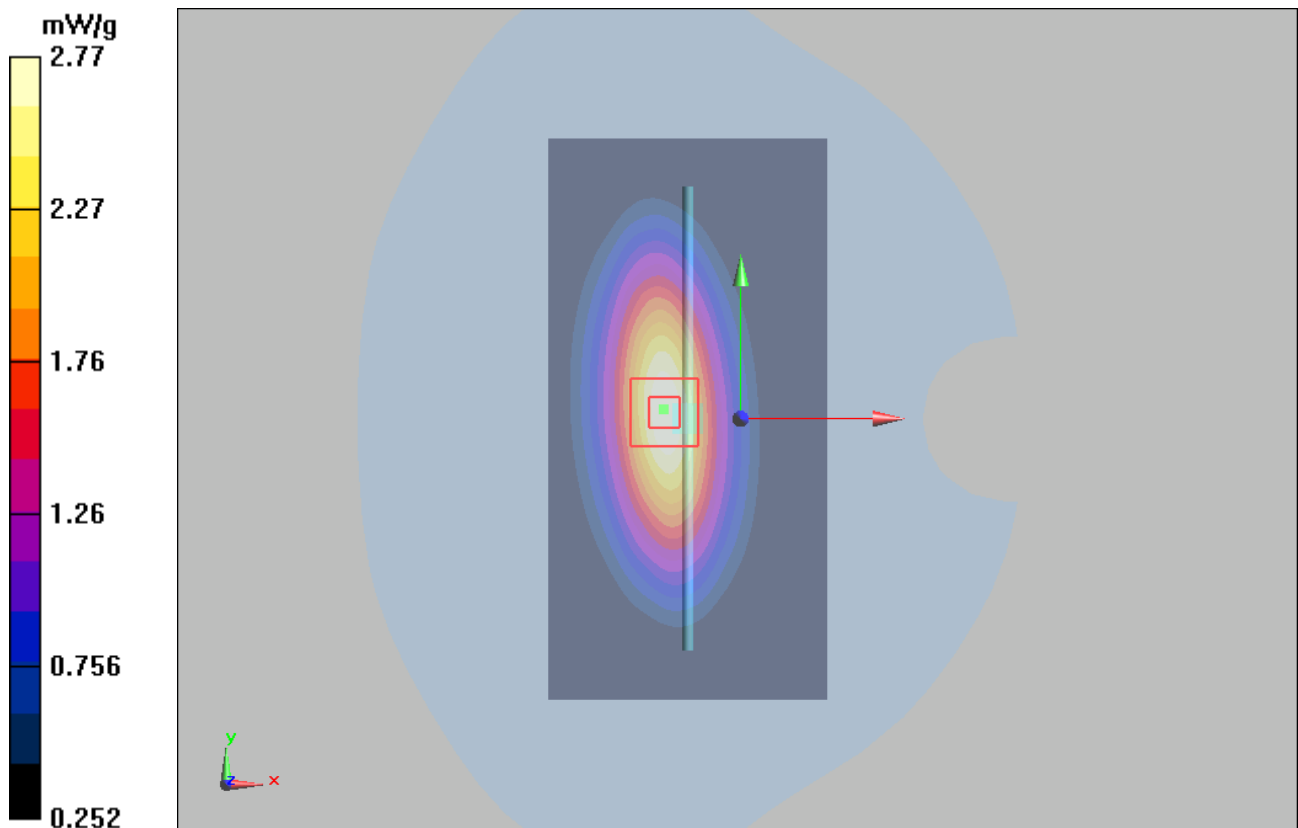


Figure 8 System Performance Check 835MHz 250mW

System Performance Check at 1900 MHz Head TSL

DUT: Dipole 1900 MHz; Type: D1900V2; Serial: D1900V2 - SN:5d018

Date/Time: 1/27/2010 9:00:04 AM

Communication System: CW; Frequency: 1900 MHz; Duty Cycle: 1:1

Medium parameters used: $f = 1900$ MHz; $\sigma = 1.38$ mho/m; $\epsilon_r = 40.03$; $\rho = 1000$ kg/m³

Ambient Temperature: 22.3 °C Liquid Temperature: 21.5 °C

DASY4 Configuration:

Probe: EX3DV4 - SN3677; ConvF(7.53, 7.53, 7.53); Calibrated: 9/23/2009

Electronics: DAE4 Sn905; Calibrated: 6/24/2009

Phantom: SAM000 T01 ; Type: SAM V4.0; Serial: TP-1246

Measurement SW: DASY4, V4.7 Build 80; Postprocessing SW: SEMCAD, V1.8 Build 186

1900 MHz Dipole/Area Scan (41x71x1): Measurement grid: dx=15mm, dy=15mm

Maximum value of SAR (interpolated) = 12.9 mW/g

1900 MHz Dipole/Zoom Scan (7x7x7)/Cube 0: Measurement grid: dx=5mm, dy=5mm, dz=5mm

Reference Value = 87.8 V/m; Power Drift = 0.040 dB

Peak SAR (extrapolated) = 20.1 W/kg

SAR(1 g) = 10.6 mW/g; SAR(10 g) = 5.46 mW/g

Maximum value of SAR (measured) = 11.9 mW/g

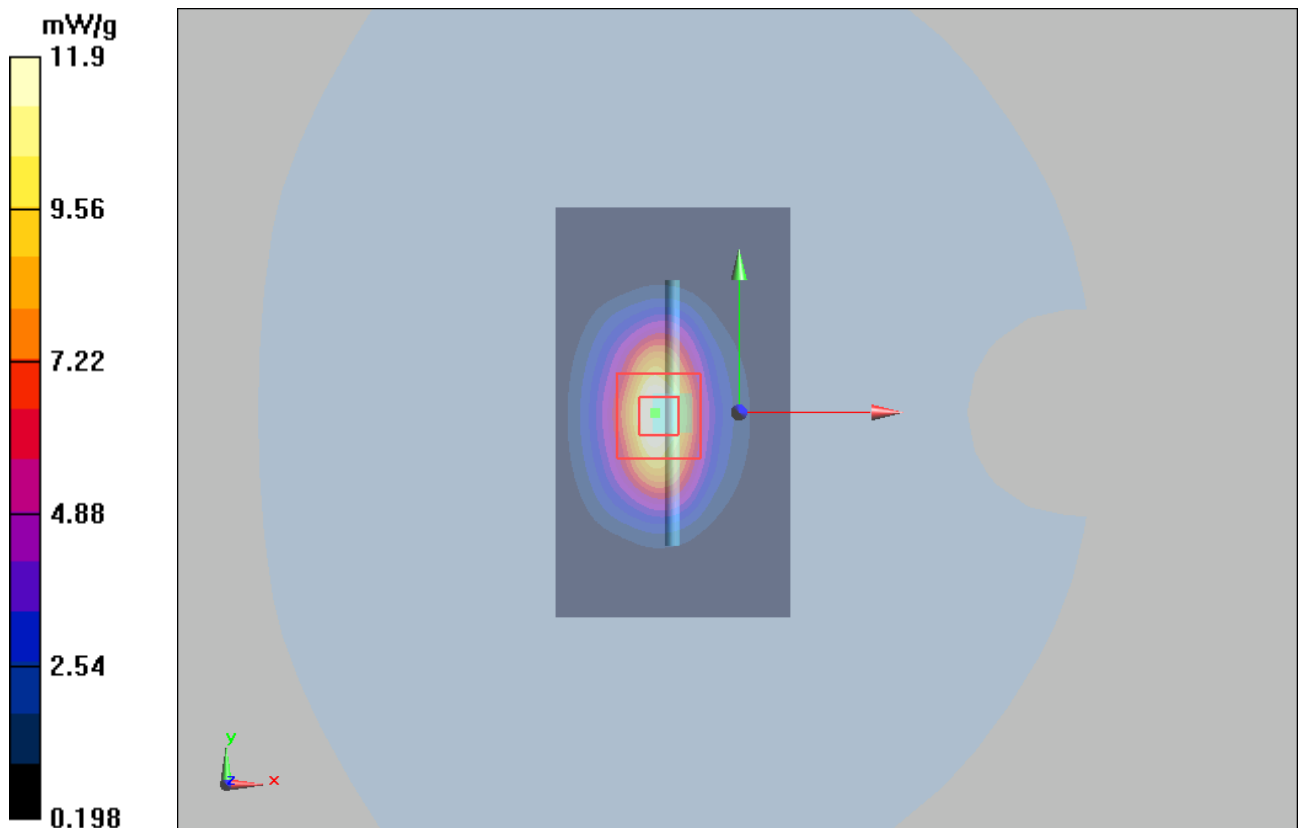


Figure 9 System Performance Check 1900MHz 250mW

System Performance Check at 1900 MHz Body TSL

DUT: Dipole 1900 MHz; Type: D1900V2; Serial: D1900V2 - SN:5d018

Date/Time: 1/27/2010 7:30:19 PM

Communication System: CW; Frequency: 1900 MHz; Duty Cycle: 1:1

Medium parameters used: $f = 1900$ MHz; $\sigma = 1.52$ mho/m; $\epsilon_r = 52.75$; $\rho = 1000$ kg/m³

Ambient Temperature: 22.3 °C Liquid Temperature: 21.5 °C

DASY4 Configuration:

Probe: EX3DV4 - SN3677; ConvF(7.62, 7.62, 7.62); Calibrated: 9/23/2009

Electronics: DAE4 Sn905; Calibrated: 6/24/2009

Phantom: SAM000 T01 ; Type: SAM V4.0; Serial: TP-1246

Measurement SW: DASY4, V4.7 Build 80; Postprocessing SW: SEMCAD, V1.8 Build 186

1900 MHz Dipole/Area Scan (41x71x1): Measurement grid: dx=15mm, dy=15mm

Maximum value of SAR (interpolated) = 12.5 mW/g

1900 MHz Dipole/Zoom Scan (7x7x7)/Cube 0: Measurement grid: dx=5mm, dy=5mm, dz=5mm

Reference Value = 75.9 V/m; Power Drift = 0.051 dB

Peak SAR (extrapolated) = 16.8 W/kg

SAR(1 g) = 9.73 mW/g; SAR(10 g) = 5.17 mW/g

Maximum value of SAR (measured) = 11 mW/g

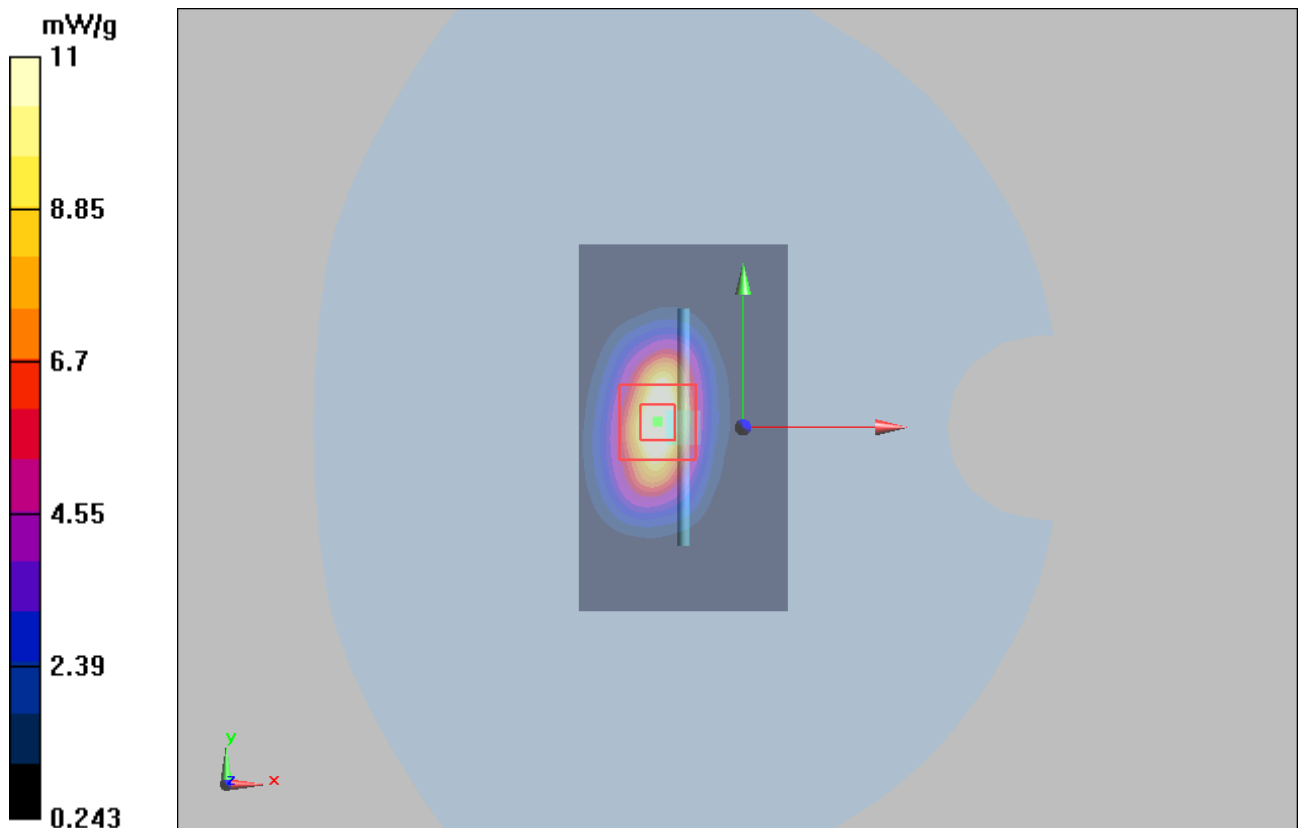


Figure 10 System Performance Check 1900MHz 250mW

ANNEX C: Graph Results

GSM 850 Left Cheek High

Date/Time: 1/28/2010 11:31:27 AM

Communication System: GSM 850; Frequency: 848.8 MHz; Duty Cycle: 1:8.3

Medium parameters used: $f = 849$ MHz; $\sigma = 0.922$ mho/m; $\epsilon_r = 42$; $\rho = 1000$ kg/m³

Ambient Temperature: 22.3 °C Liquid Temperature: 21.5 °C

Phantom section: Left Section

DASY4 Configuration:

Probe: EX3DV4 - SN3677; ConvF(9.2, 9.2, 9.2); Calibrated: 9/23/2009

Electronics: DAE4 Sn905; Calibrated: 6/24/2009

Phantom: SAM 12; Type: SAM V4.0; Serial: TP-1246

Measurement SW: DASY4, V4.7 Build 80; Postprocessing SW: SEMCAD, V1.8 Build 186

Cheek High/Area Scan (61x91x1): Measurement grid: dx=15mm, dy=15mm

Maximum value of SAR (interpolated) = 1.13 mW/g

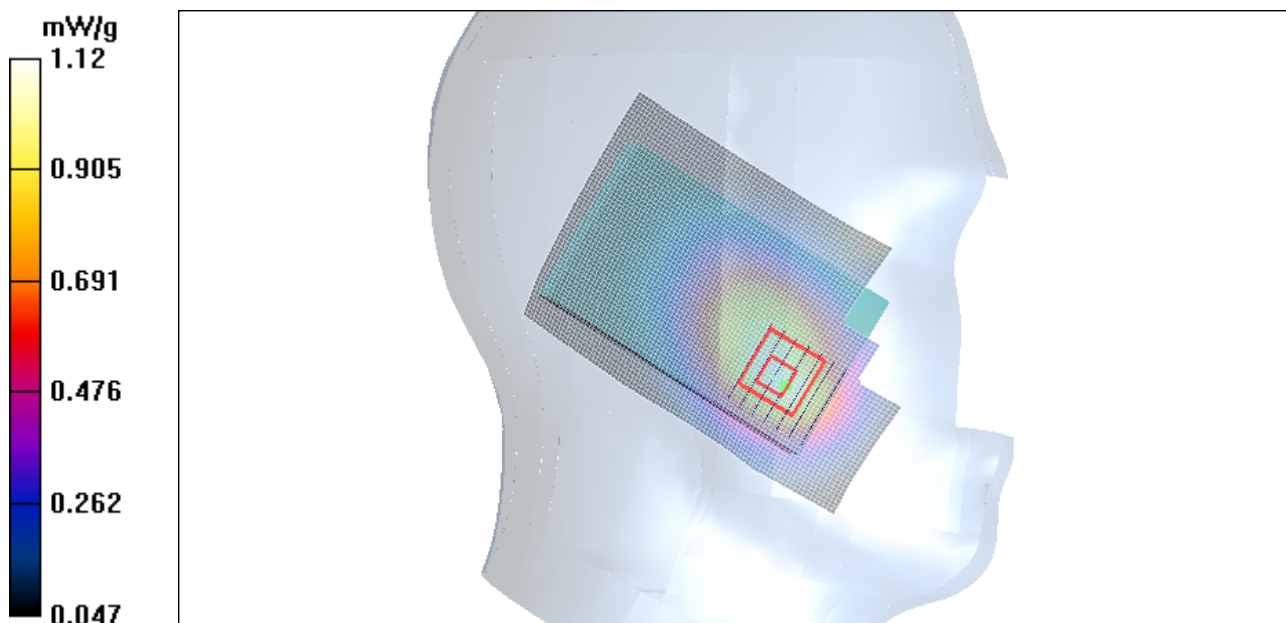
Cheek High/Zoom Scan (7x7x7)/Cube 0: Measurement grid: dx=5mm, dy=5mm, dz=5mm

Reference Value = 9.05 V/m; Power Drift = 0.057 dB

Peak SAR (extrapolated) = 1.63 W/kg

SAR(1 g) = 1.04 mW/g; SAR(10 g) = 0.668 mW/g

Maximum value of SAR (measured) = 1.12 mW/g



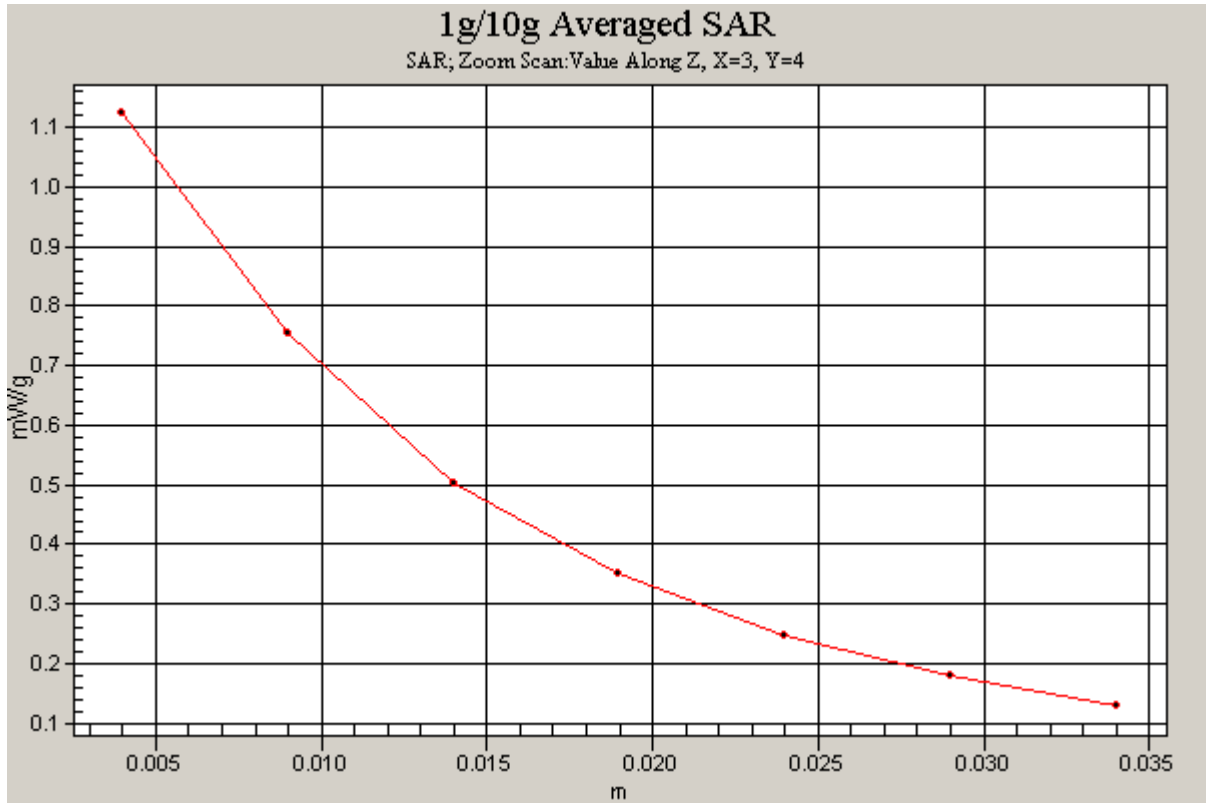


Figure 11 Left Hand Touch Cheek GSM 850 Channel 251

GSM 850 Left Cheek Middle

Date/Time: 1/28/2010 11:09:57 AM

Communication System: GSM 850; Frequency: 836.6 MHz; Duty Cycle: 1:8.3

Medium parameters used: $f = 837$ MHz; $\sigma = 0.91$ mho/m; $\epsilon_r = 42.1$; $\rho = 1000$ kg/m³

Ambient Temperature: 22.3 °C Liquid Temperature: 21.5 °C

Phantom section: Left Section

DASY4 Configuration:

Probe: EX3DV4 - SN3677; ConvF(9.2, 9.2, 9.2); Calibrated: 9/23/2009

Electronics: DAE4 Sn905; Calibrated: 6/24/2009

Phantom: SAM 12; Type: SAM V4.0; Serial: TP-1246

Measurement SW: DASY4, V4.7 Build 80; Postprocessing SW: SEMCAD, V1.8 Build 186

Cheek Middle/Area Scan (61x91x1): Measurement grid: dx=15mm, dy=15mm

Maximum value of SAR (interpolated) = 0.952 mW/g

Cheek Middle/Zoom Scan (7x7x7)/Cube 0: Measurement grid: dx=5mm, dy=5mm, dz=5mm

Reference Value = 8.25 V/m; Power Drift = 0.134 dB

Peak SAR (extrapolated) = 1.36 W/kg

SAR(1 g) = 0.867 mW/g; SAR(10 g) = 0.564 mW/g

Maximum value of SAR (measured) = 0.936 mW/g

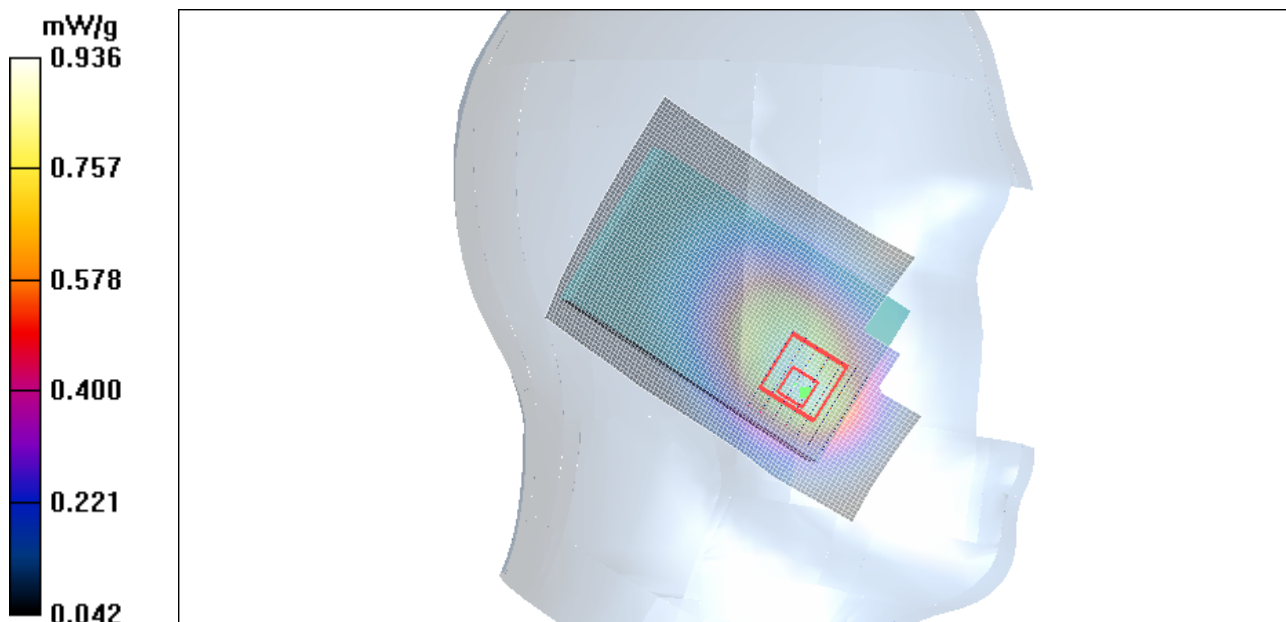


Figure 12 Left Hand Touch Cheek GSM 850 Channel 190

GSM 850 Left Cheek Low

Date/Time: 1/28/2010 11:52:21 AM

Communication System: GSM 850; Frequency: 824.2 MHz; Duty Cycle: 1:8.3

Medium parameters used (interpolated): $f = 824.2$ MHz; $\sigma = 0.897$ mho/m; $\epsilon_r = 42.3$; $\rho = 1000$ kg/m³

Ambient Temperature: 22.3 °C Liquid Temperature: 21.5 °C

Phantom section: Left Section

DASY4 Configuration:

Probe: EX3DV4 - SN3677; ConvF(9.2, 9.2, 9.2); Calibrated: 9/23/2009

Electronics: DAE4 Sn905; Calibrated: 6/24/2009

Phantom: SAM 12; Type: SAM V4.0; Serial: TP-1246

Measurement SW: DASY4, V4.7 Build 80; Postprocessing SW: SEMCAD, V1.8 Build 186

Cheek Low/Area Scan (61x91x1): Measurement grid: dx=15mm, dy=15mm

Maximum value of SAR (interpolated) = 0.804 mW/g

Cheek Low/Zoom Scan (7x7x7)/Cube 0: Measurement grid: dx=5mm, dy=5mm, dz=5mm

Reference Value = 7.69 V/m; Power Drift = 0.053 dB

Peak SAR (extrapolated) = 1.14 W/kg

SAR(1 g) = 0.729 mW/g; SAR(10 g) = 0.474 mW/g

Maximum value of SAR (measured) = 0.786 mW/g

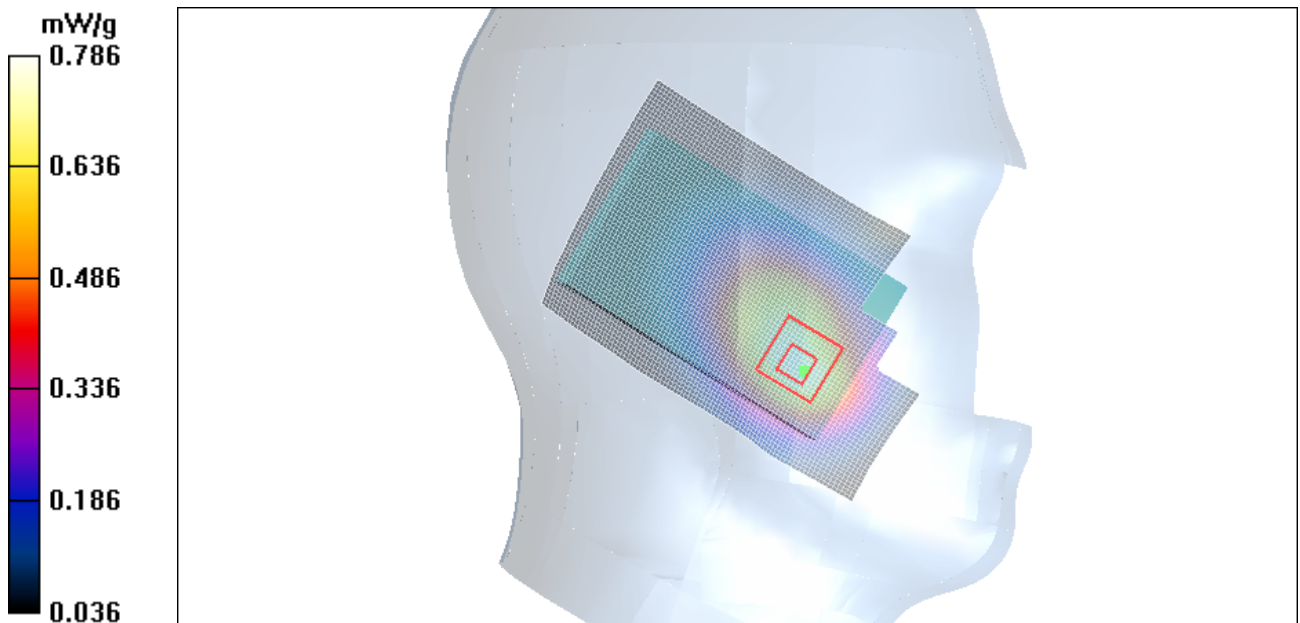


Figure 13 Left Hand Touch Cheek GSM 850 Channel 128

GSM 850 Left Tilt Middle

Date/Time: 1/28/2010 12:15:41 PM

Communication System: GSM 850; Frequency: 836.6 MHz; Duty Cycle: 1:8.3

Medium parameters used: $f = 837$ MHz; $\sigma = 0.91$ mho/m; $\epsilon_r = 42.1$; $\rho = 1000$ kg/m³

Ambient Temperature: 22.3 °C Liquid Temperature: 21.5 °C

Phantom section: Left Section

DASY4 Configuration:

Probe: EX3DV4 - SN3677; ConvF(9.2, 9.2, 9.2); Calibrated: 9/23/2009

Electronics: DAE4 Sn905; Calibrated: 6/24/2009

Phantom: SAM 12; Type: SAM V4.0; Serial: TP-1246

Measurement SW: DASY4, V4.7 Build 80; Postprocessing SW: SEMCAD, V1.8 Build 186

Tilt Middle/Area Scan (61x91x1): Measurement grid: dx=15mm, dy=15mm

Maximum value of SAR (interpolated) = 0.321 mW/g

Tilt Middle/Zoom Scan (7x7x7)/Cube 0: Measurement grid: dx=5mm, dy=5mm, dz=5mm

Reference Value = 10.8 V/m; Power Drift = 0.107 dB

Peak SAR (extrapolated) = 0.376 W/kg

SAR(1 g) = 0.302 mW/g; SAR(10 g) = 0.225 mW/g

Maximum value of SAR (measured) = 0.320 mW/g

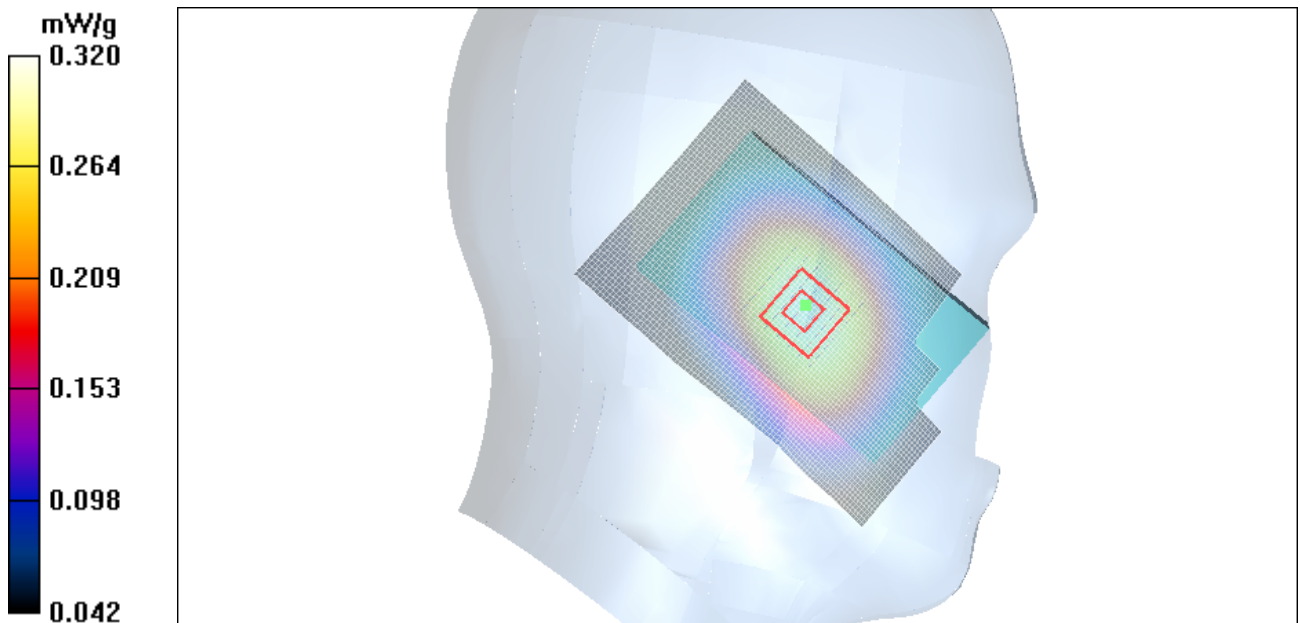


Figure 14 Left Hand Tilt 15° GSM 850 Channel 190

GSM 850 Right Cheek Middle

Date/Time: 1/28/2010 4:49:41 PM

Communication System: GSM 850; Frequency: 836.6 MHz; Duty Cycle: 1:8.3

Medium parameters used: $f = 837$ MHz; $\sigma = 0.91$ mho/m; $\epsilon_r = 42.1$; $\rho = 1000$ kg/m³

Ambient Temperature: 22.3 °C Liquid Temperature: 21.5 °C

Phantom section: Right Section

DASY4 Configuration:

Probe: EX3DV4 - SN3677; ConvF(9.2, 9.2, 9.2); Calibrated: 9/23/2009

Electronics: DAE4 Sn905; Calibrated: 6/24/2009

Phantom: SAM 12; Type: SAM V4.0; Serial: TP-1246

Measurement SW: DASY4, V4.7 Build 80; Postprocessing SW: SEMCAD, V1.8 Build 186

Cheek Middle/Area Scan (61x91x1): Measurement grid: dx=15mm, dy=15mm

Maximum value of SAR (interpolated) = 0.758 mW/g

Cheek Middle/Zoom Scan (7x7x7)/Cube 0: Measurement grid: dx=5mm, dy=5mm, dz=5mm

Reference Value = 8.80 V/m; Power Drift = -0.049 dB

Peak SAR (extrapolated) = 1.02 W/kg

SAR(1 g) = 0.705 mW/g; SAR(10 g) = 0.489 mW/g

Maximum value of SAR (measured) = 0.745 mW/g

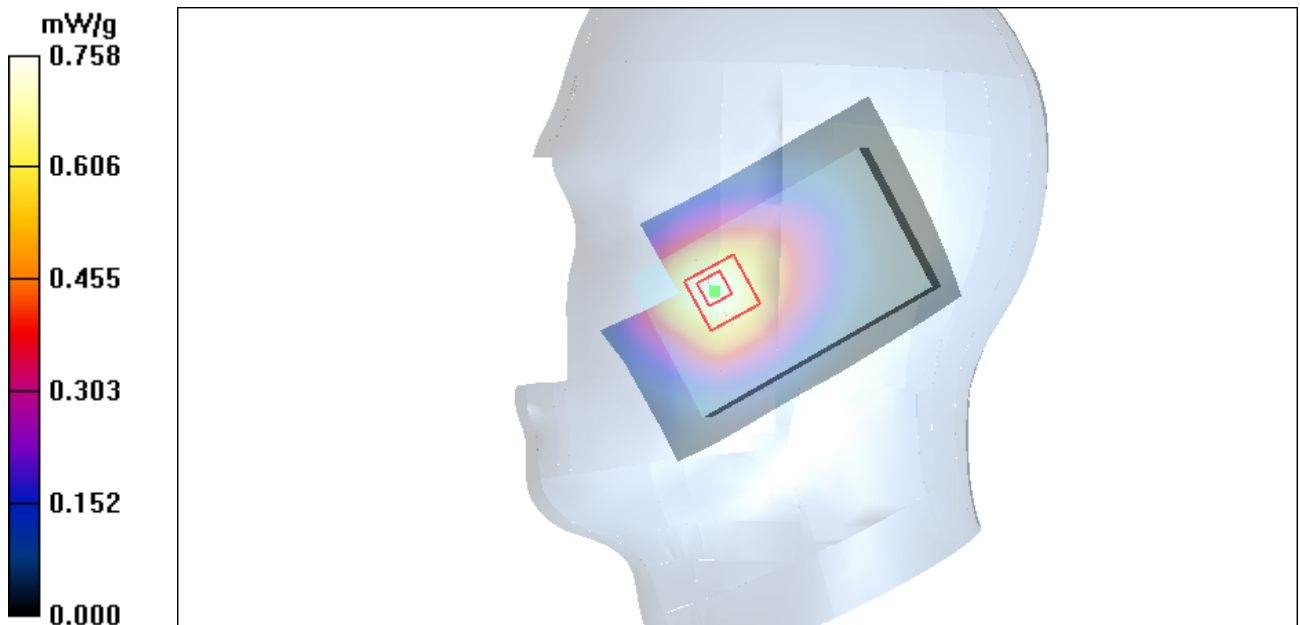


Figure 15 Right Hand Touch Cheek GSM 850 Channel 190

GSM 850 Right Tilt Middle

Date/Time: 1/28/2010 5:10:50 PM

Communication System: GSM 850; Frequency: 836.6 MHz; Duty Cycle: 1:8.3

Medium parameters used: $f = 837$ MHz; $\sigma = 0.91$ mho/m; $\epsilon_r = 42.1$; $\rho = 1000$ kg/m³

Ambient Temperature: 22.3 °C Liquid Temperature: 21.5 °C

Phantom section: Right Section

DASY4 Configuration:

Probe: EX3DV4 - SN3677; ConvF(9.2, 9.2, 9.2); Calibrated: 9/23/2009

Electronics: DAE4 Sn905; Calibrated: 6/24/2009

Phantom: SAM 12; Type: SAM V4.0; Serial: TP-1246

Measurement SW: DASY4, V4.7 Build 80; Postprocessing SW: SEMCAD, V1.8 Build 186

Tilt Middle/Area Scan (61x91x1): Measurement grid: dx=15mm, dy=15mm

Maximum value of SAR (interpolated) = 0.339 mW/g

Tilt Middle/Zoom Scan (7x7x7)/Cube 0: Measurement grid: dx=5mm, dy=5mm, dz=5mm

Reference Value = 12.8 V/m; Power Drift = 0.044 dB

Peak SAR (extrapolated) = 0.407 W/kg

SAR(1 g) = 0.318 mW/g; SAR(10 g) = 0.233 mW/g

Maximum value of SAR (measured) = 0.337 mW/g

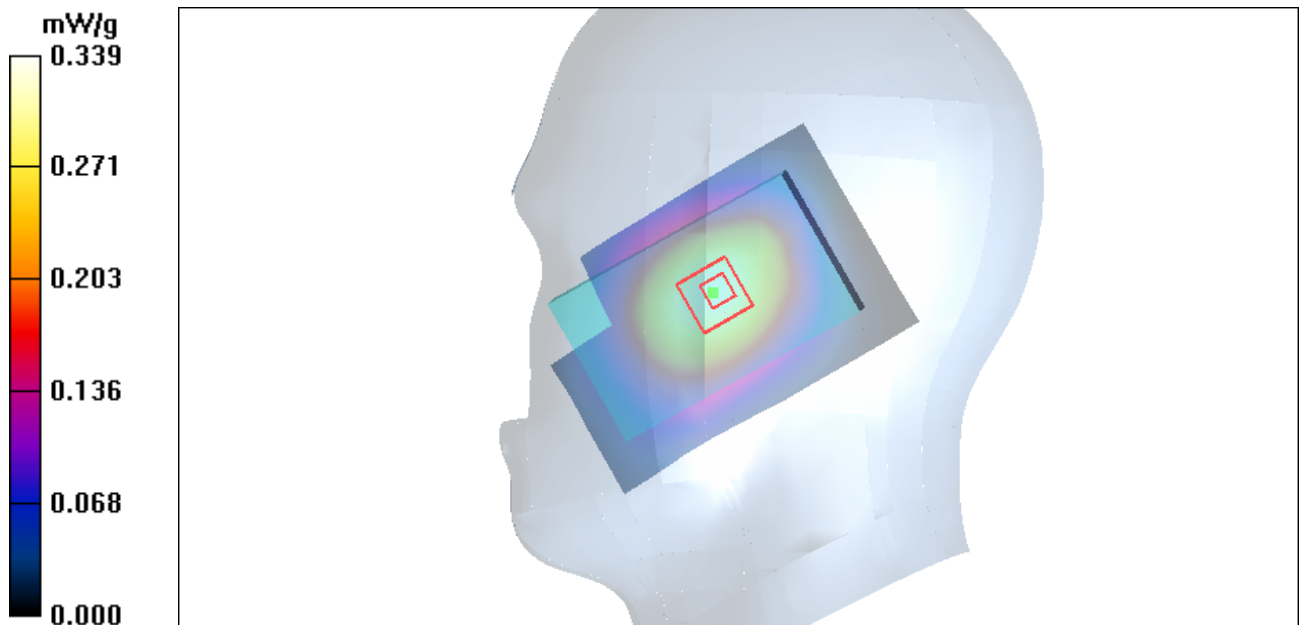


Figure 16 Right Hand Tilt 15° GSM 850 Channel 190

GSM 850 Towards Ground High

Date/Time: 1/28/2010 10:15:16 PM

Communication System: GSM 850; Frequency: 848.8 MHz; Duty Cycle: 1:8.3

Medium parameters used: $f = 849$ MHz; $\sigma = 0.992$ mho/m; $\epsilon_r = 54.7$; $\rho = 1000$ kg/m³

Ambient Temperature: 22.3 °C Liquid Temperature: 21.5 °C

Phantom section: Flat Section

DASY4 Configuration:

Probe: EX3DV4 - SN3677; ConvF(9.11, 9.11, 9.11); Calibrated: 9/23/2009

Electronics: DAE4 Sn905; Calibrated: 6/24/2009

Phantom: SAM 12; Type: SAM V4.0; Serial: TP-1246

Measurement SW: DASY4, V4.7 Build 80; Postprocessing SW: SEMCAD, V1.8 Build 186

Towards Ground High/Area Scan (51x91x1): Measurement grid: dx=15mm, dy=15mm

Maximum value of SAR (interpolated) = 0.717 mW/g

Towards Ground High/Zoom Scan (7x7x7)/Cube 0: Measurement grid: dx=5mm, dy=5mm,

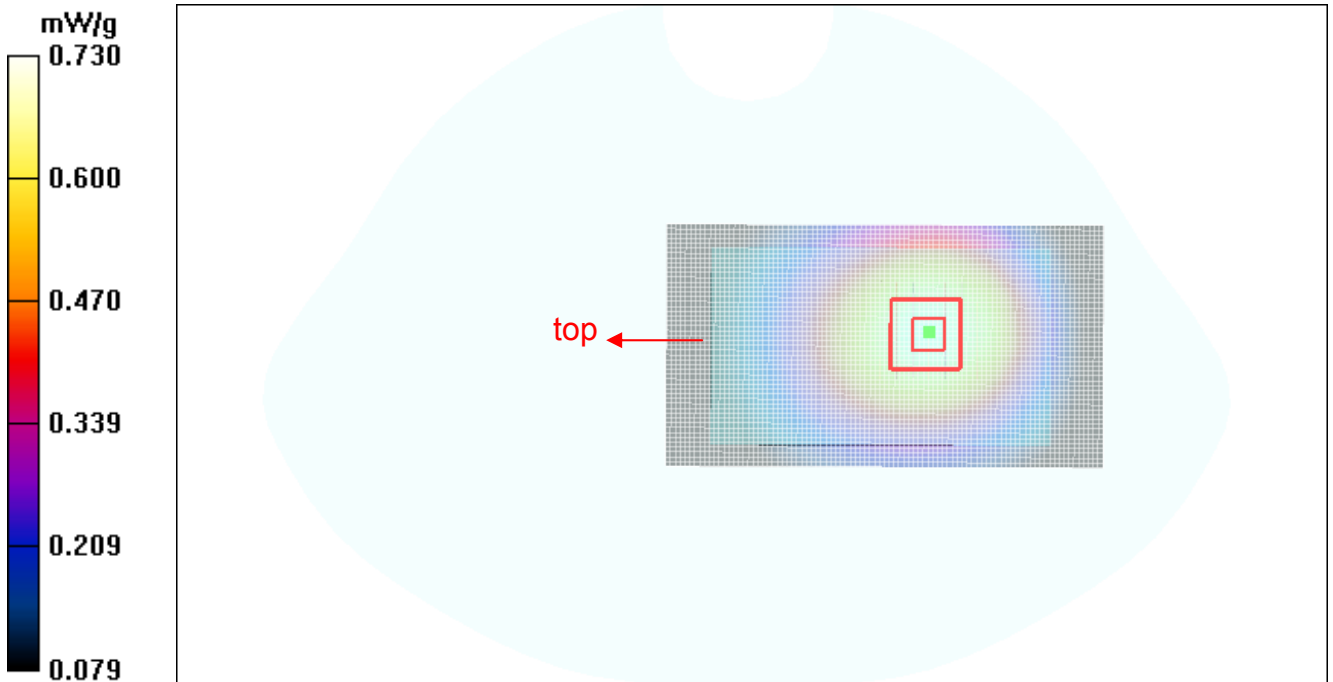
dz=5mm

Reference Value = 12.7 V/m; Power Drift = -0.036 dB

Peak SAR (extrapolated) = 0.899 W/kg

SAR(1 g) = 0.685 mW/g; SAR(10 g) = 0.497 mW/g

Maximum value of SAR (measured) = 0.730 mW/g



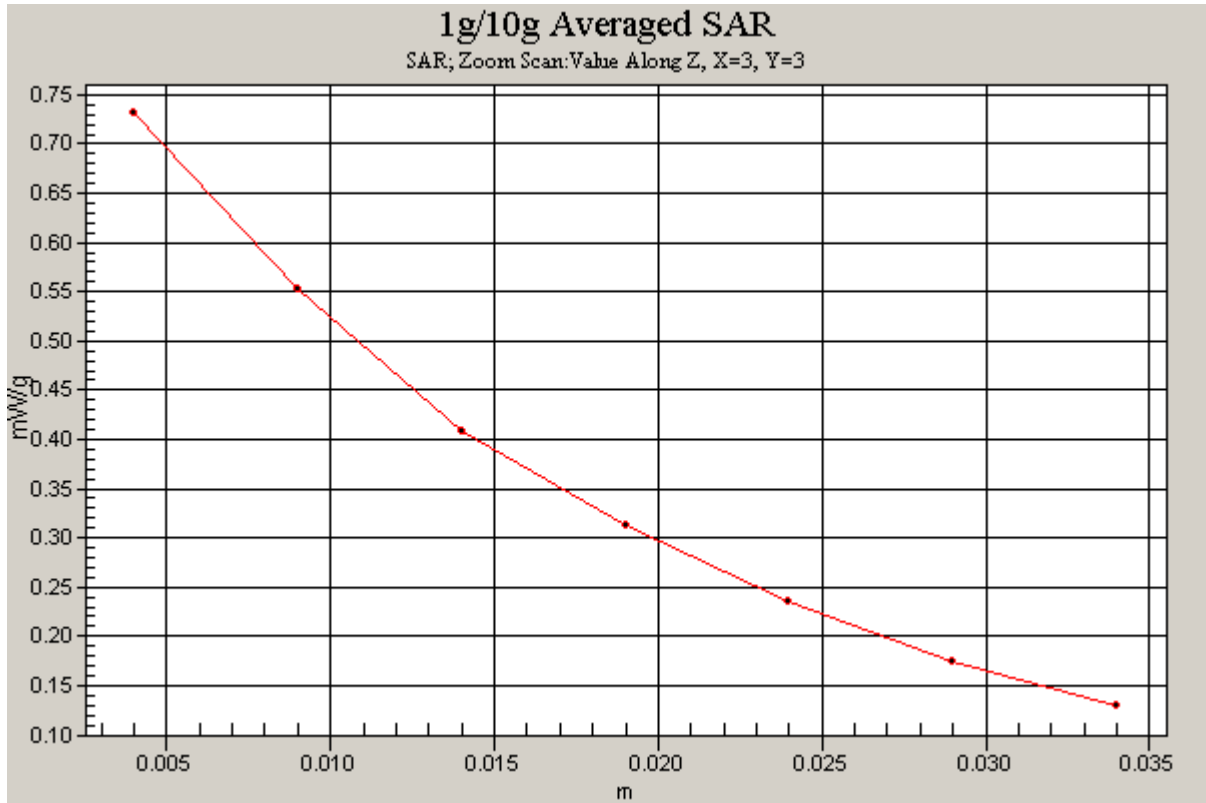


Figure 17 Body, Towards Ground, GSM 850 Channel 251

GSM 850 Towards Ground Middle

Date/Time: 1/28/2010 9:39:58 PM

Communication System: GSM 850; Frequency: 836.6 MHz; Duty Cycle: 1:8.3

Medium parameters used: $f = 837$ MHz; $\sigma = 0.979$ mho/m; $\epsilon_r = 54.9$; $\rho = 1000$ kg/m³

Ambient Temperature: 22.3 °C Liquid Temperature: 21.5 °C

Phantom section: Flat Section

DASY4 Configuration:

Probe: EX3DV4 - SN3677; ConvF(9.11, 9.11, 9.11); Calibrated: 9/23/2009

Electronics: DAE4 Sn905; Calibrated: 6/24/2009

Phantom: SAM 12; Type: SAM V4.0; Serial: TP-1246

Measurement SW: DASY4, V4.7 Build 80; Postprocessing SW: SEMCAD, V1.8 Build 186

Towards Ground Middle/Area Scan (51x91x1): Measurement grid: dx=15mm, dy=15mm

Maximum value of SAR (interpolated) = 0.644 mW/g

Towards Ground Middle/Zoom Scan (7x7x7)/Cube 0: Measurement grid: dx=5mm, dy=5mm, dz=5mm

Reference Value = 12.0 V/m; Power Drift = -0.014 dB

Peak SAR (extrapolated) = 0.786 W/kg

SAR(1 g) = 0.610 mW/g; SAR(10 g) = 0.445 mW/g

Maximum value of SAR (measured) = 0.645 mW/g

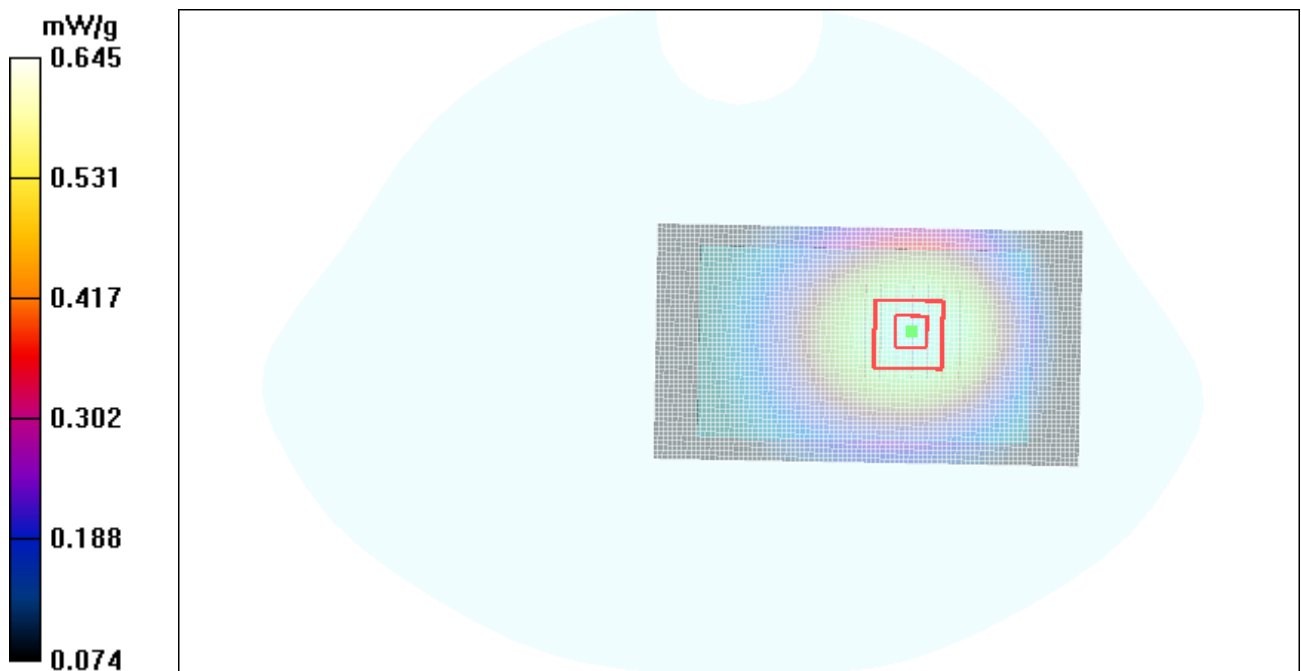


Figure 18 Body, Towards Ground, GSM 850 Channel 190

GSM 850 Towards Ground Low

Date/Time: 1/28/2010 9:57:40 PM

Communication System: GSM 850; Frequency: 824.2 MHz; Duty Cycle: 1:8.3

Medium parameters used (interpolated): $f = 824.2$ MHz; $\sigma = 0.969$ mho/m; $\epsilon_r = 55$; $\rho = 1000$ kg/m³

Ambient Temperature: 22.3 °C Liquid Temperature: 21.5 °C

Phantom section: Flat Section

DASY4 Configuration:

Probe: EX3DV4 - SN3677; ConvF(9.11, 9.11, 9.11); Calibrated: 9/23/2009

Electronics: DAE4 Sn905; Calibrated: 6/24/2009

Phantom: SAM 12; Type: SAM V4.0; Serial: TP-1246

Measurement SW: DASY4, V4.7 Build 80; Postprocessing SW: SEMCAD, V1.8 Build 186

Towards Ground Low/Area Scan (51x91x1): Measurement grid: dx=15mm, dy=15mm

Maximum value of SAR (interpolated) = 0.552 mW/g

Towards Ground Low/Zoom Scan (7x7x7)/Cube 0: Measurement grid: dx=5mm, dy=5mm, dz=5mm

Reference Value = 11.0 V/m; Power Drift = -0.015 dB

Peak SAR (extrapolated) = 0.682 W/kg

SAR(1 g) = 0.523 mW/g; SAR(10 g) = 0.382 mW/g

Maximum value of SAR (measured) = 0.550 mW/g

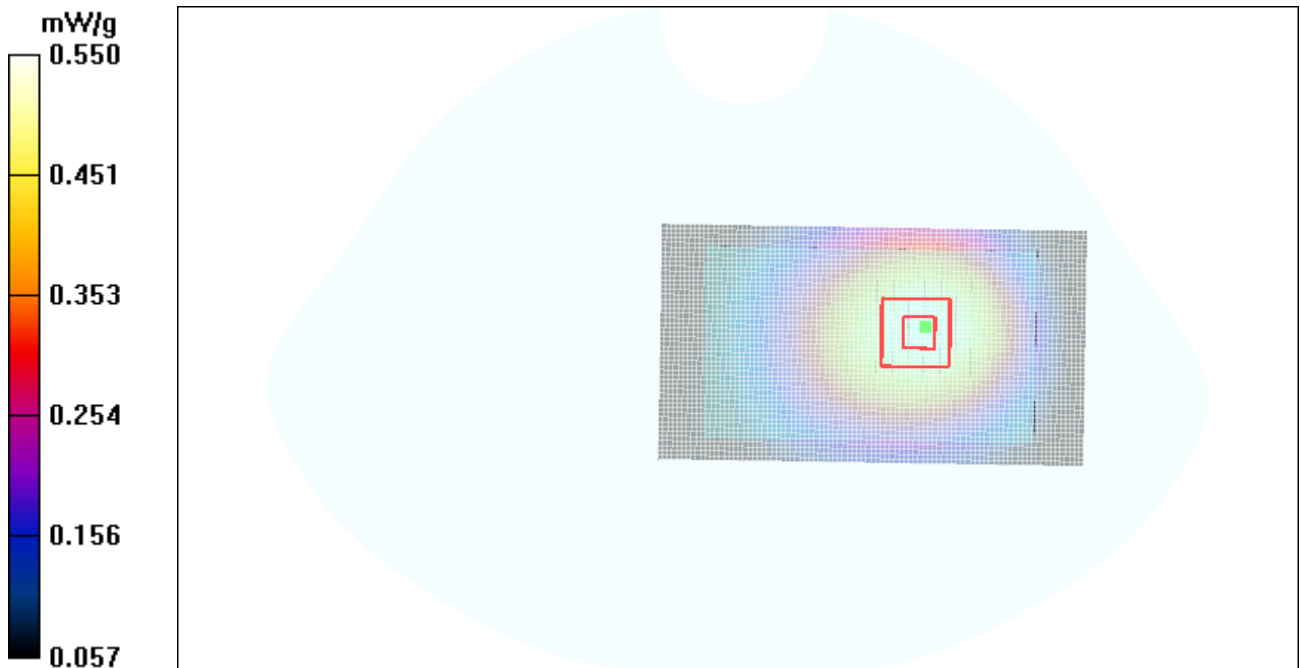


Figure 19 Body, Towards Ground, GSM 850 Channel 128

GSM 850 Towards Phantom Middle

Date/Time: 1/28/2010 10:33:52 PM

Communication System: GSM 850; Frequency: 836.6 MHz; Duty Cycle: 1:8.3

Medium parameters used: $f = 837$ MHz; $\sigma = 0.979$ mho/m; $\epsilon_r = 54.9$; $\rho = 1000$ kg/m³

Ambient Temperature: 22.3 °C Liquid Temperature: 21.5 °C

Phantom section: Flat Section

DASY4 Configuration:

Probe: EX3DV4 - SN3677; ConvF(9.11, 9.11, 9.11); Calibrated: 9/23/2009

Electronics: DAE4 Sn905; Calibrated: 6/24/2009

Phantom: SAM 12; Type: SAM V4.0; Serial: TP-1246

Measurement SW: DASY4, V4.7 Build 80; Postprocessing SW: SEMCAD, V1.8 Build 186

Towards Phantom Middle/Area Scan (51x91x1): Measurement grid: dx=15mm, dy=15mm

Maximum value of SAR (interpolated) = 0.539 mW/g

Towards Phantom Middle/Zoom Scan (7x7x7)/Cube 0: Measurement grid: dx=5mm, dy=5mm,

dz=5mm

Reference Value = 6.27 V/m; Power Drift = 0.034 dB

Peak SAR (extrapolated) = 0.681 W/kg

SAR(1 g) = 0.496 mW/g; SAR(10 g) = 0.349 mW/g

Maximum value of SAR (measured) = 0.528 mW/g

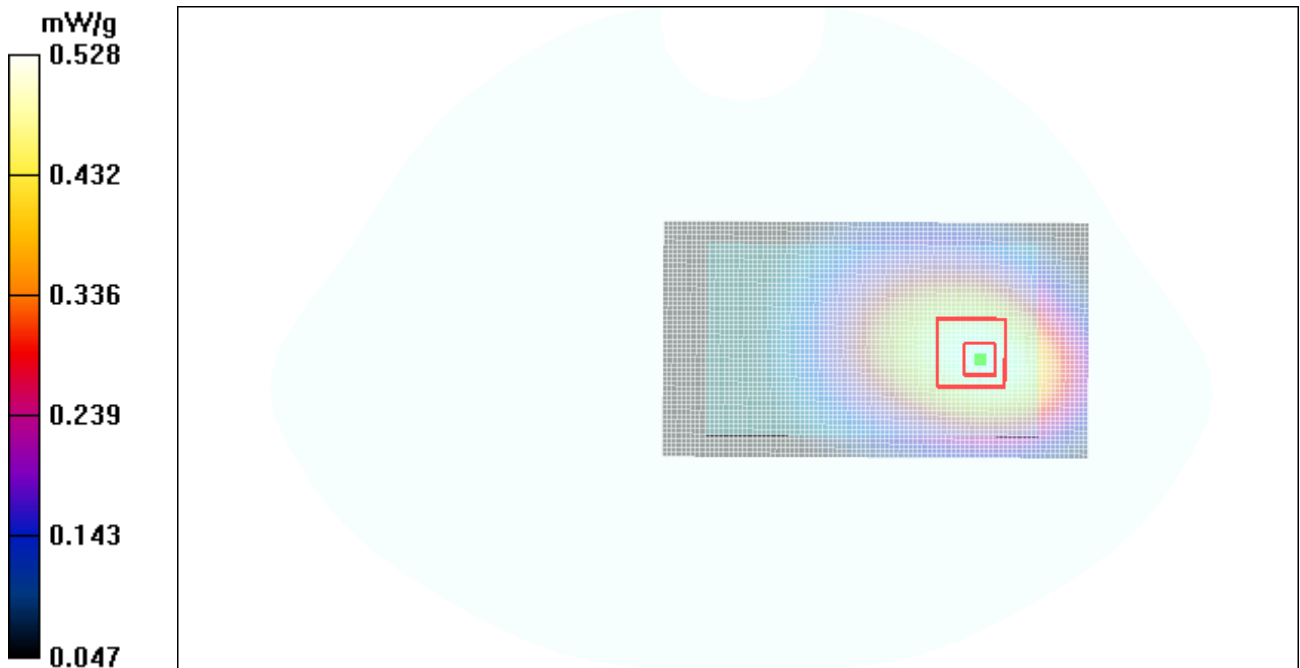


Figure 20 Body, Towards Phantom, GSM 850 Channel190

GSM 850 Towards Ground with Earphone High

Date/Time: 1/28/2010 11:36:43 PM

Communication System: GSM 850; Frequency: 848.8 MHz; Duty Cycle: 1:8.3

Medium parameters used: $f = 849$ MHz; $\sigma = 0.992$ mho/m; $\epsilon_r = 54.7$; $\rho = 1000$ kg/m³

Ambient Temperature: 22.3 °C Liquid Temperature: 21.5 °C

Phantom section: Flat Section

DASY4 Configuration:

Probe: EX3DV4 - SN3677; ConvF(9.11, 9.11, 9.11); Calibrated: 9/23/2009

Electronics: DAE4 Sn905; Calibrated: 6/24/2009

Phantom: SAM 12; Type: SAM V4.0; Serial: TP-1246

Measurement SW: DASY4, V4.7 Build 80; Postprocessing SW: SEMCAD, V1.8 Build 186

Towards Ground High/Area Scan (51x91x1): Measurement grid: dx=15mm, dy=15mm

Maximum value of SAR (interpolated) = 0.443 mW/g

Towards Ground High/Zoom Scan (7x7x7)/Cube 0: Measurement grid: dx=5mm, dy=5mm, dz=5mm

Reference Value = 8.42 V/m; Power Drift = -0.158 dB

Peak SAR (extrapolated) = 0.545 W/kg

SAR(1 g) = 0.417 mW/g; SAR(10 g) = 0.299 mW/g

Maximum value of SAR (measured) = 0.441 mW/g

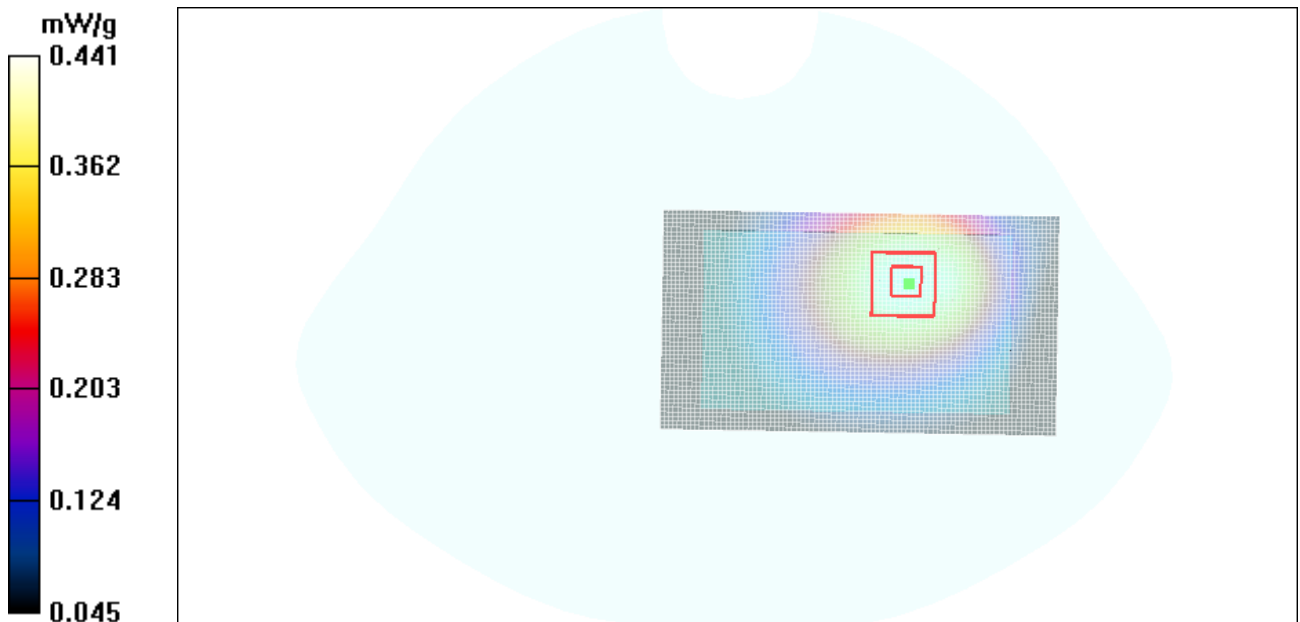


Figure 21 Body with Earphone, Towards Ground, GSM 850 Channel 251

GSM 1900 Left Cheek High

Date/Time: 1/27/2010 2:40:46 PM

Communication System: PCS 1900; Frequency: 1909.8 MHz; Duty Cycle: 1:8.3

Medium parameters used: $f = 1910$ MHz; $\sigma = 1.39$ mho/m; $\epsilon_r = 40$; $\rho = 1000$ kg/m³

Ambient Temperature: 22.3 °C Liquid Temperature: 21.5 °C

Phantom section: Left Section

DASY4 Configuration:

Probe: EX3DV4 - SN3677; ConvF(7.53, 7.53, 7.53); Calibrated: 9/23/2009

Electronics: DAE4 Sn905; Calibrated: 6/24/2009

Phantom: SAM000 T01 ; Type: SAM V4.0; Serial: TP-1246

Measurement SW: DASY4, V4.7 Build 80; Postprocessing SW: SEMCAD, V1.8 Build 186

Cheek High/Area Scan (61x91x1): Measurement grid: dx=15mm, dy=15mm

Maximum value of SAR (interpolated) = 1.34 mW/g

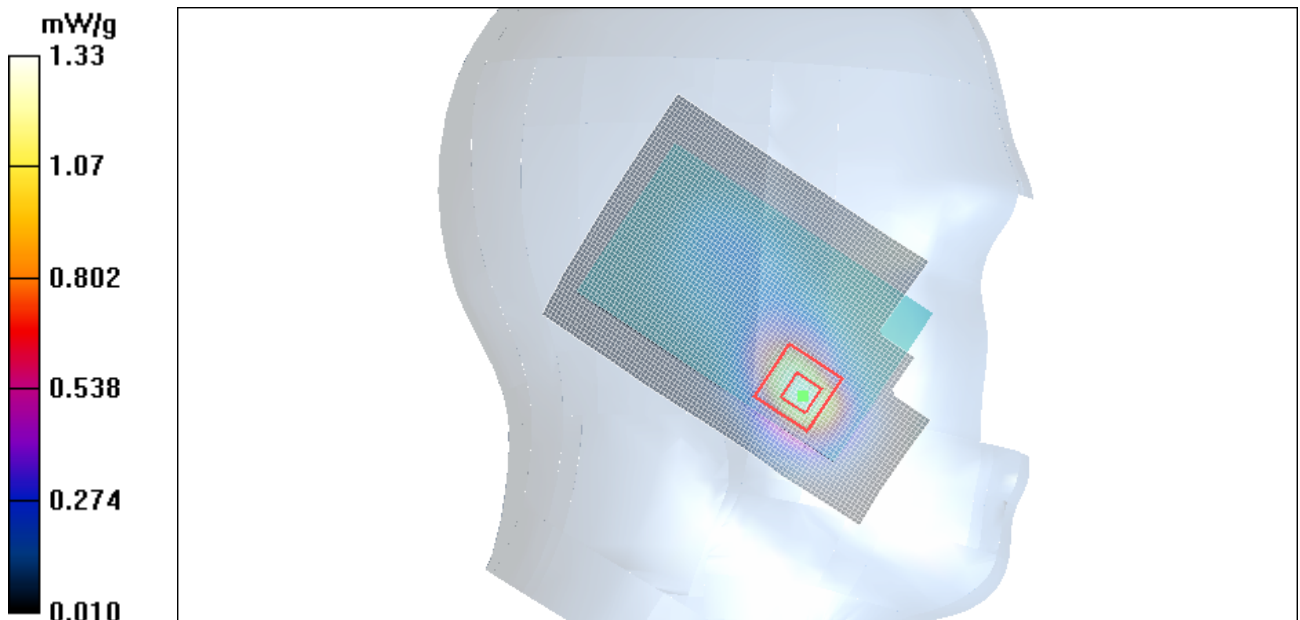
Cheek High/Zoom Scan (7x7x7)/Cube 0: Measurement grid: dx=5mm, dy=5mm, dz=5mm

Reference Value = 7.53 V/m; Power Drift = -0.007 dB

Peak SAR (extrapolated) = 1.99 W/kg

SAR(1 g) = 1.17 mW/g; SAR(10 g) = 0.628 mW/g

Maximum value of SAR (measured) = 1.33 mW/g



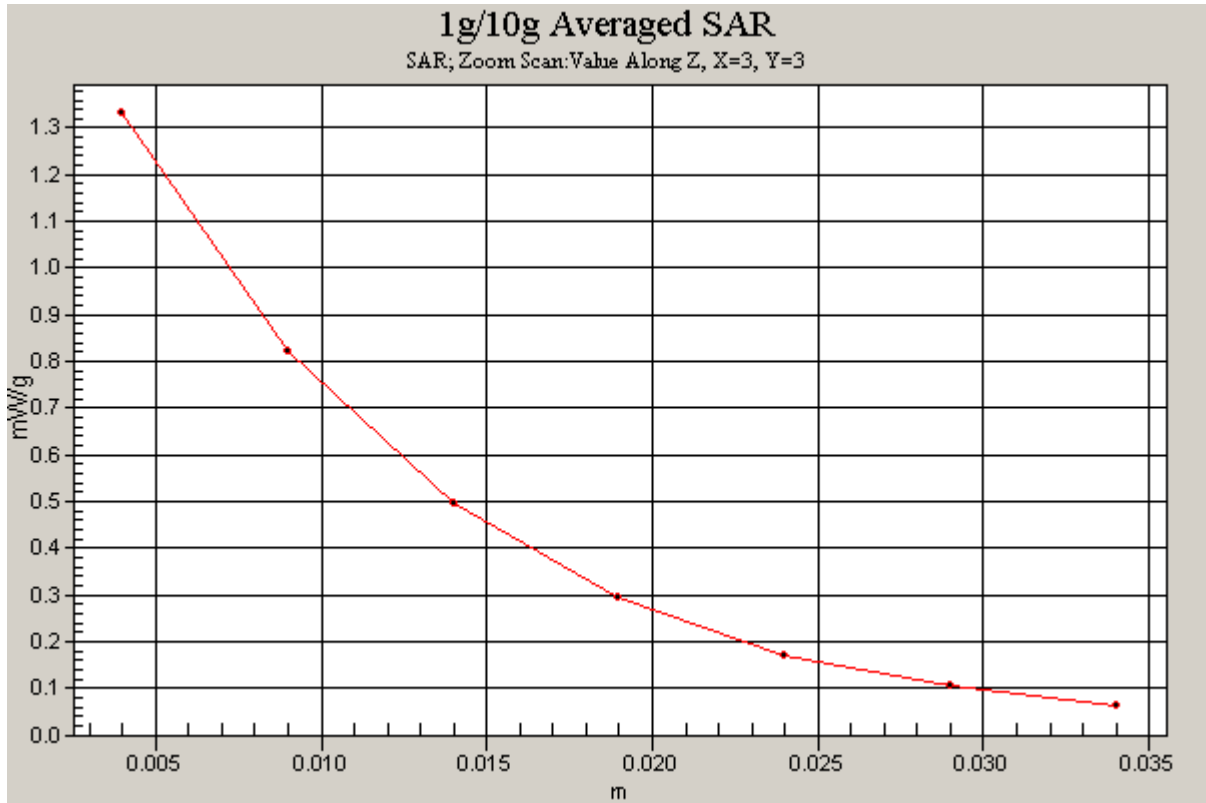


Figure 22 Left Hand Touch Cheek GSM 1900 Channel 810

GSM 1900 Left Cheek Middle

Date/Time: 1/27/2010 11:04:32 AM

Communication System: PCS 1900; Frequency: 1880 MHz; Duty Cycle: 1:8.3

Medium parameters used: $f = 1880$ MHz; $\sigma = 1.36$ mho/m; $\epsilon_r = 40.1$; $\rho = 1000$ kg/m³

Ambient Temperature: 22.3 °C Liquid Temperature: 21.5 °C

Phantom section: Left Section

DASY4 Configuration:

Probe: EX3DV4 - SN3677; ConvF(7.53, 7.53, 7.53); Calibrated: 9/23/2009

Electronics: DAE4 Sn905; Calibrated: 6/24/2009

Phantom: SAM000 T01 ; Type: SAM V4.0; Serial: TP-1246

Measurement SW: DASY4, V4.7 Build 80; Postprocessing SW: SEMCAD, V1.8 Build 186

Cheek Middle 2/Area Scan (61x91x1): Measurement grid: dx=15mm, dy=15mm

Maximum value of SAR (interpolated) = 1.03 mW/g

Cheek Middle 2/Zoom Scan (7x7x7)/Cube 0: Measurement grid: dx=5mm, dy=5mm, dz=5mm

Reference Value = 6.17 V/m; Power Drift = -0.040 dB

Peak SAR (extrapolated) = 1.49 W/kg

SAR(1 g) = 0.907 mW/g; SAR(10 g) = 0.495 mW/g

Maximum value of SAR (measured) = 1.03 mW/g

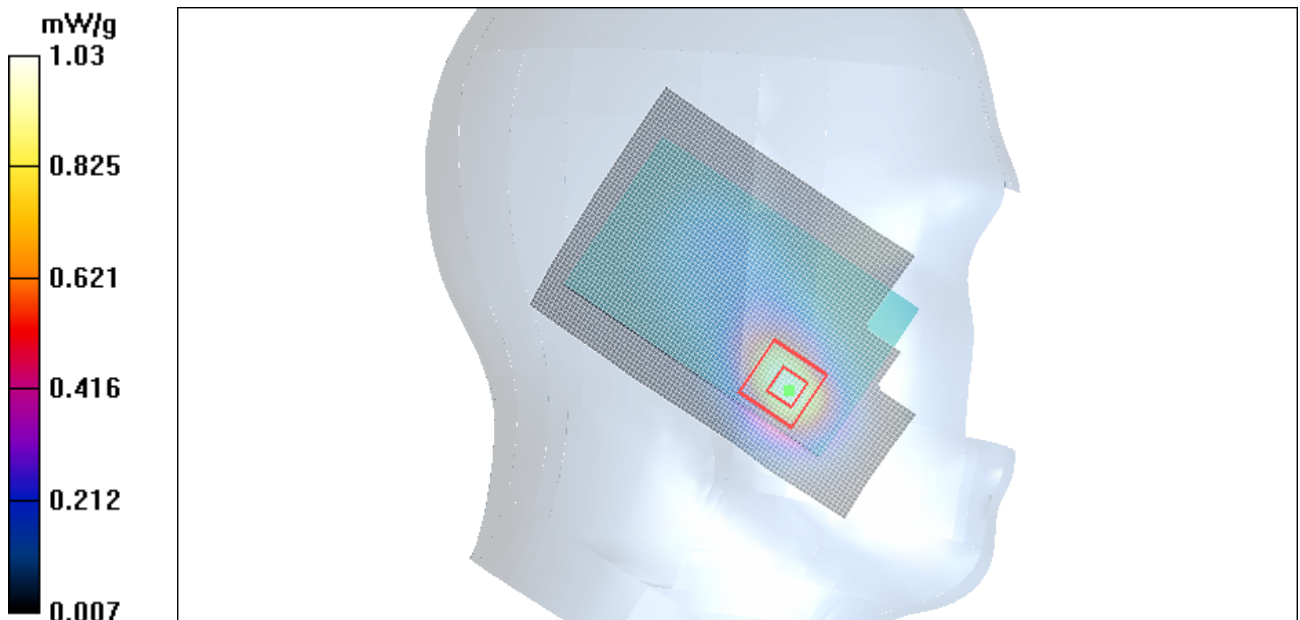


Figure 23 Left Hand Touch Cheek GSM 1900 Channel 661

GSM 1900 Left Cheek Low

Date/Time: 1/27/2010 3:00:34 PM

Communication System: PCS 1900; Frequency: 1850.2 MHz; Duty Cycle: 1:8.3

Medium parameters used (interpolated): $f = 1850.2$ MHz; $\sigma = 1.33$ mho/m; $\epsilon_r = 40.2$; $\rho = 1000$ kg/m³

Ambient Temperature: 22.3 °C Liquid Temperature: 21.5 °C

Phantom section: Left Section

DASY4 Configuration:

Probe: EX3DV4 - SN3677; ConvF(7.53, 7.53, 7.53); Calibrated: 9/23/2009

Electronics: DAE4 Sn905; Calibrated: 6/24/2009

Phantom: SAM000 T01 ; Type: SAM V4.0; Serial: TP-1246

Measurement SW: DASY4, V4.7 Build 80; Postprocessing SW: SEMCAD, V1.8 Build 186

Cheek Low/Area Scan (61x91x1): Measurement grid: dx=15mm, dy=15mm

Maximum value of SAR (interpolated) = 0.927 mW/g

Cheek Low/Zoom Scan (7x7x7)/Cube 0: Measurement grid: dx=5mm, dy=5mm, dz=5mm

Reference Value = 5.82 V/m; Power Drift = -0.076 dB

Peak SAR (extrapolated) = 1.31 W/kg

SAR(1 g) = 0.818 mW/g; SAR(10 g) = 0.452 mW/g

Maximum value of SAR (measured) = 0.924 mW/g

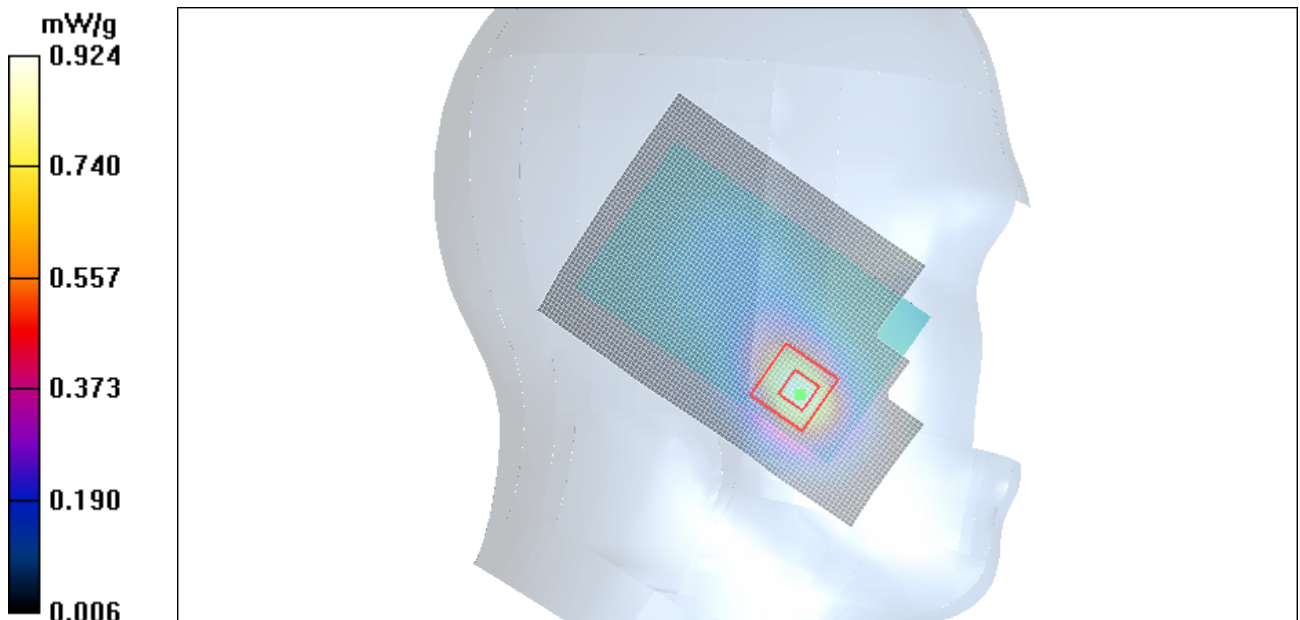


Figure 24 Left Hand Touch Cheek GSM 1900 Channel 512

GSM 1900 Left Tilt Middle

Date/Time: 1/27/2010 3:20:51 PM

Communication System: PCS 1900; Frequency: 1880 MHz; Duty Cycle: 1:8.3

Medium parameters used: $f = 1880$ MHz; $\sigma = 1.36$ mho/m; $\epsilon_r = 40.1$; $\rho = 1000$ kg/m³

Ambient Temperature: 22.3 °C Liquid Temperature: 21.5 °C

Phantom section: Left Section

DASY4 Configuration:

Probe: EX3DV4 - SN3677; ConvF(7.53, 7.53, 7.53); Calibrated: 9/23/2009

Electronics: DAE4 Sn905; Calibrated: 6/24/2009

Phantom: SAM000 T01 ; Type: SAM V4.0; Serial: TP-1246

Measurement SW: DASY4, V4.7 Build 80; Postprocessing SW: SEMCAD, V1.8 Build 186

Tilt Middle/Area Scan (61x91x1): Measurement grid: dx=15mm, dy=15mm

Maximum value of SAR (interpolated) = 0.179 mW/g

Tilt Middle/Zoom Scan (7x7x7)/Cube 0: Measurement grid: dx=5mm, dy=5mm, dz=5mm

Reference Value = 7.97 V/m; Power Drift = -0.022 dB

Peak SAR (extrapolated) = 0.210 W/kg

SAR(1 g) = 0.143 mW/g; SAR(10 g) = 0.091 mW/g

Maximum value of SAR (measured) = 0.154 mW/g

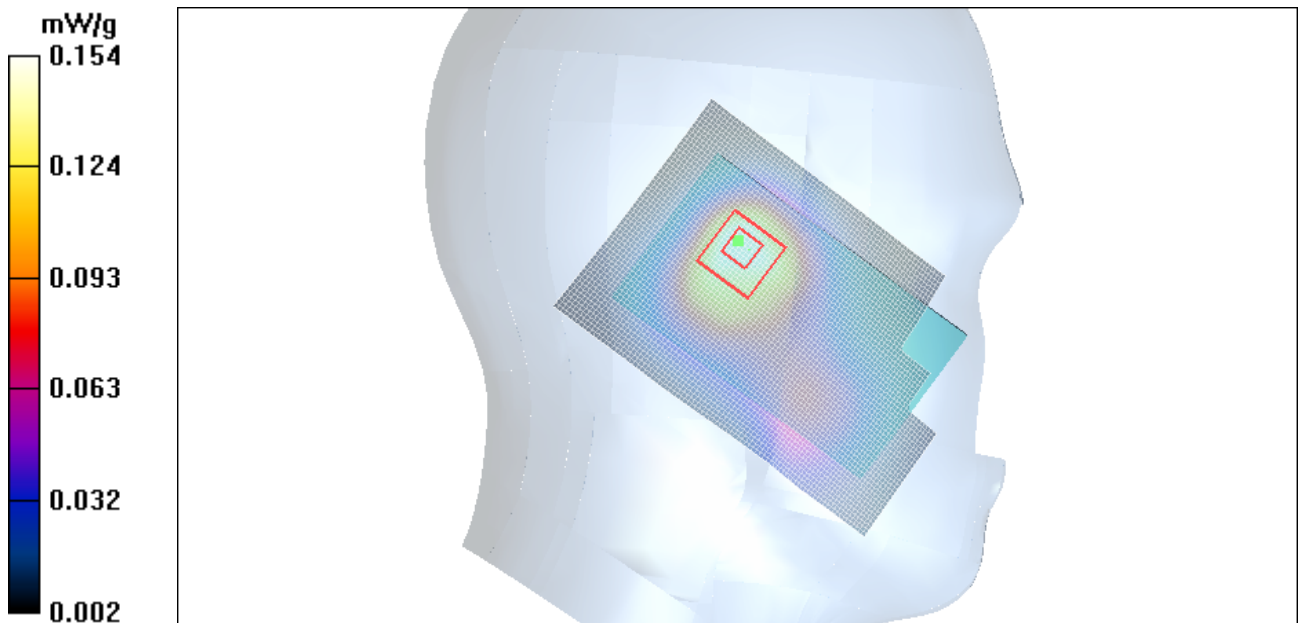


Figure 25 Left Hand Tilt 15° GSM 1900 Channel 661

GSM 1900 Right Cheek Middle

Date/Time: 1/27/2010 1:58:33 PM

Communication System: PCS 1900; Frequency: 1880 MHz; Duty Cycle: 1:8.3

Medium parameters used: $f = 1880$ MHz; $\sigma = 1.36$ mho/m; $\epsilon_r = 40.1$; $\rho = 1000$ kg/m³

Ambient Temperature: 22.3 °C Liquid Temperature: 21.5 °C

Phantom section: Right Section

DASY4 Configuration:

Probe: EX3DV4 - SN3677; ConvF(7.53, 7.53, 7.53); Calibrated: 9/23/2009

Electronics: DAE4 Sn905; Calibrated: 6/24/2009

Phantom: SAM000 T01 ; Type: SAM V4.0; Serial: TP-1246

Measurement SW: DASY4, V4.7 Build 80; Postprocessing SW: SEMCAD, V1.8 Build 186

Cheek Middle/Area Scan (61x91x1): Measurement grid: dx=15mm, dy=15mm

Maximum value of SAR (interpolated) = 0.711 mW/g

Cheek Middle/Zoom Scan (7x7x7)/Cube 0: Measurement grid: dx=5mm, dy=5mm, dz=5mm

Reference Value = 8.38 V/m; Power Drift = 0.023 dB

Peak SAR (extrapolated) = 1.03 W/kg

SAR(1 g) = 0.660 mW/g; SAR(10 g) = 0.382 mW/g

Maximum value of SAR (measured) = 0.722 mW/g

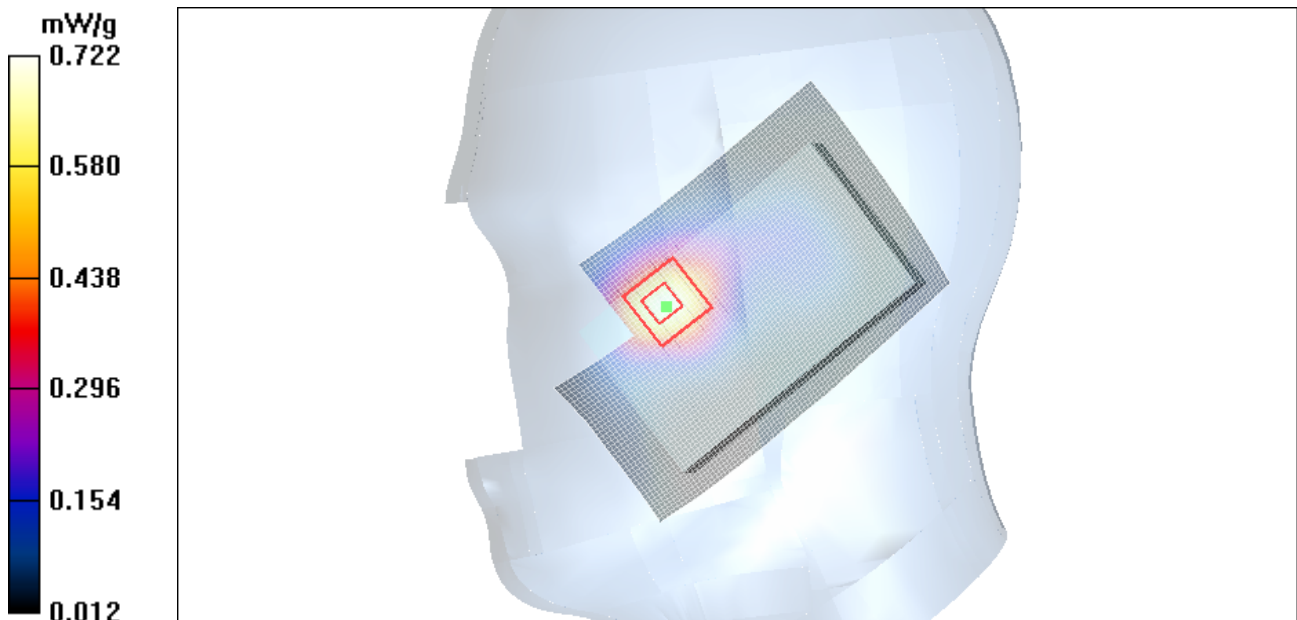


Figure 26 Right Hand Touch Cheek GSM 1900 Channel 661

GSM 1900 Right Tilt Middle

Date/Time: 1/27/2010 2:19:18 PM

Communication System: PCS 1900; Frequency: 1880 MHz; Duty Cycle: 1:8.3

Medium parameters used: $f = 1880$ MHz; $\sigma = 1.36$ mho/m; $\epsilon_r = 40.1$; $\rho = 1000$ kg/m³

Ambient Temperature: 22.3 °C Liquid Temperature: 21.5 °C

Phantom section: Right Section

DASY4 Configuration:

Probe: EX3DV4 - SN3677; ConvF(7.53, 7.53, 7.53); Calibrated: 9/23/2009

Electronics: DAE4 Sn905; Calibrated: 6/24/2009

Phantom: SAM000 T01 ; Type: SAM V4.0; Serial: TP-1246

Measurement SW: DASY4, V4.7 Build 80; Postprocessing SW: SEMCAD, V1.8 Build 186

Tilt Middle/Area Scan (61x91x1): Measurement grid: dx=15mm, dy=15mm

Maximum value of SAR (interpolated) = 0.169 mW/g

Tilt Middle/Zoom Scan (7x7x7)/Cube 0: Measurement grid: dx=5mm, dy=5mm, dz=5mm

Reference Value = 10.2 V/m; Power Drift = -0.041 dB

Peak SAR (extrapolated) = 0.199 W/kg

SAR(1 g) = 0.140 mW/g; SAR(10 g) = 0.090 mW/g

Maximum value of SAR (measured) = 0.152 mW/g

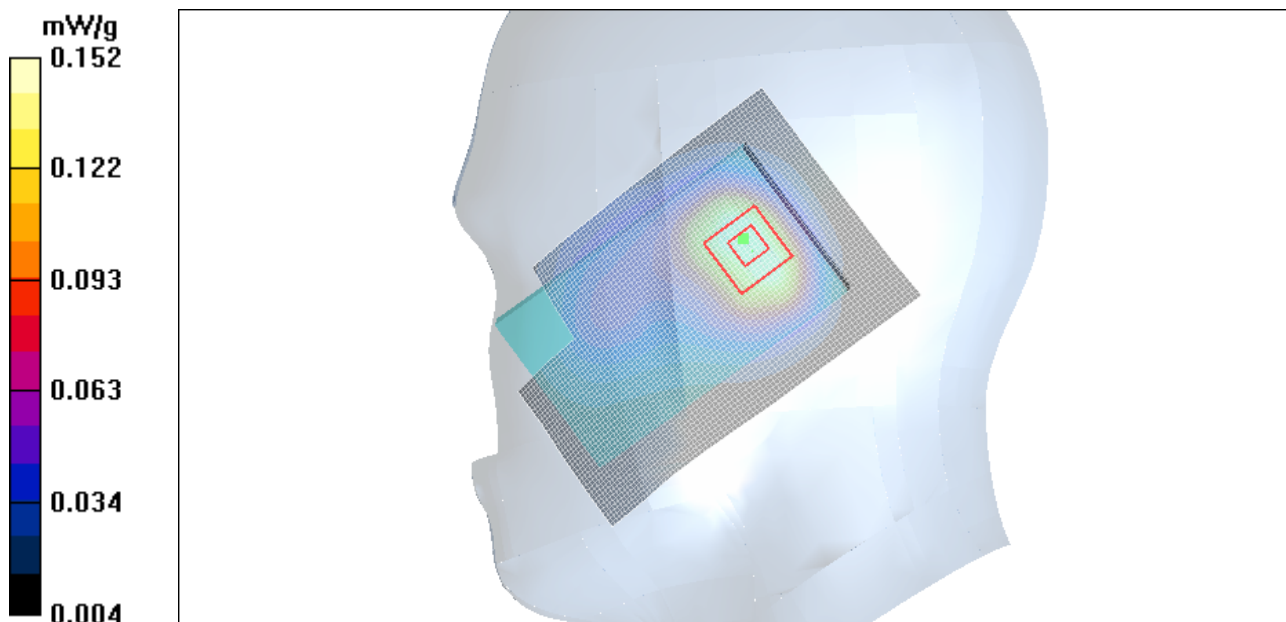


Figure 27 Right Hand Tilt 15° GSM 1900 Channel 661

GSM 1900 Towards Ground Middle

Date/Time: 1/27/2010 9:59:31 PM

Communication System: PCS 1900; Frequency: 1880 MHz; Duty Cycle: 1:8.3

Medium parameters used: $f = 1880$ MHz; $\sigma = 1.49$ mho/m; $\epsilon_r = 52.8$; $\rho = 1000$ kg/m³

Ambient Temperature: 22.3 °C Liquid Temperature: 21.5 °C

Phantom section: Flat Section

DASY4 Configuration:

Probe: EX3DV4 - SN3677; ConvF(7.62, 7.62, 7.62); Calibrated: 9/23/2009

Electronics: DAE4 Sn905; Calibrated: 6/24/2009

Phantom: SAM000 T01 ; Type: SAM V4.0; Serial: TP-1246

Measurement SW: DASY4, V4.7 Build 80; Postprocessing SW: SEMCAD, V1.8 Build 186

Towards Ground Middle/Area Scan (51x91x1): Measurement grid: dx=15mm, dy=15mm

Maximum value of SAR (interpolated) = 0.167 mW/g

Towards Ground Middle/Zoom Scan (7x7x7)/Cube 0: Measurement grid: dx=5mm, dy=5mm, dz=5mm

Reference Value = 6.31 V/m; Power Drift = 0.023 dB

Peak SAR (extrapolated) = 0.240 W/kg

SAR(1 g) = 0.149 mW/g; SAR(10 g) = 0.089 mW/g

Maximum value of SAR (measured) = 0.164 mW/g



Figure 28 Body, Towards Ground, GSM 1900 Channel 661

GSM 1900 Towards Phantom High

Date/Time: 1/27/2010 10:37:29 PM

Communication System: PCS 1900; Frequency: 1909.8 MHz; Duty Cycle: 1:8.3

Medium parameters used: $f = 1910$ MHz; $\sigma = 1.53$ mho/m; $\epsilon_r = 52.7$; $\rho = 1000$ kg/m³

Ambient Temperature: 22.3 °C Liquid Temperature: 21.5 °C

Phantom section: Flat Section

DASY4 Configuration:

Probe: EX3DV4 - SN3677; ConvF(7.62, 7.62, 7.62); Calibrated: 9/23/2009

Electronics: DAE4 Sn905; Calibrated: 6/24/2009

Phantom: SAM000 T01 ; Type: SAM V4.0; Serial: TP-1246

Measurement SW: DASY4, V4.7 Build 80; Postprocessing SW: SEMCAD, V1.8 Build 186

Towards Phantom High/Area Scan (51x91x1): Measurement grid: dx=15mm, dy=15mm

Maximum value of SAR (interpolated) = 0.253 mW/g

Towards Phantom High/Zoom Scan (7x7x7)/Cube 0: Measurement grid: dx=5mm, dy=5mm,

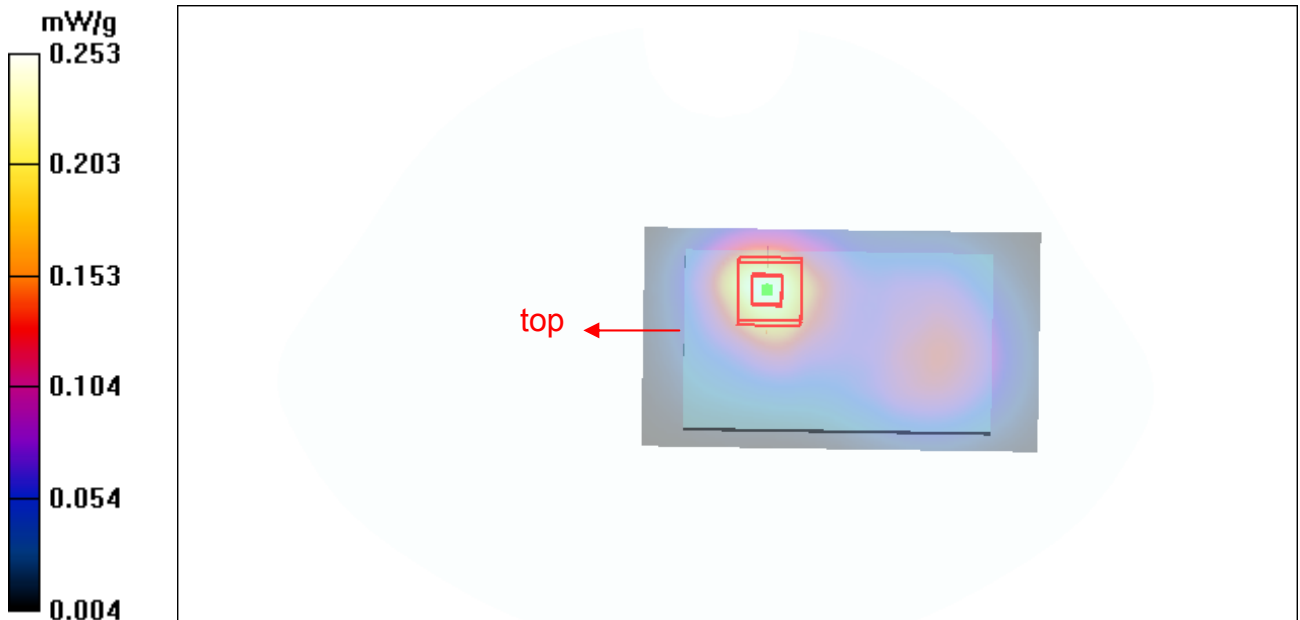
dz=5mm

Reference Value = 7.09 V/m; Power Drift = -0.037 dB

Peak SAR (extrapolated) = 0.379 W/kg

SAR(1 g) = 0.227 mW/g; SAR(10 g) = 0.131 mW/g

Maximum value of SAR (measured) = 0.249 mW/g



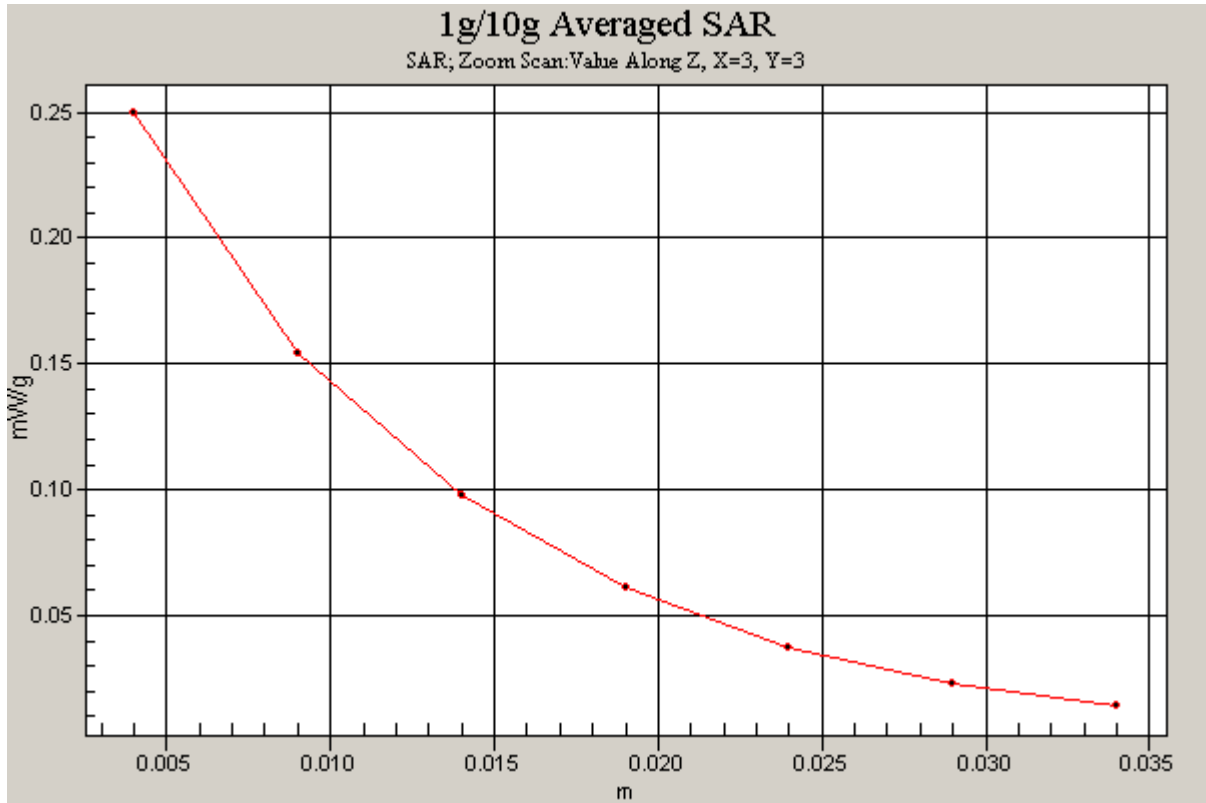


Figure 29 Body, Towards Phantom, GSM 1900 Channel 810

GSM 1900 Towards Phantom Middle

Date/Time: 1/27/2010 9:40:45 PM

Communication System: PCS 1900; Frequency: 1880 MHz; Duty Cycle: 1:8.3

Medium parameters used: $f = 1880$ MHz; $\sigma = 1.49$ mho/m; $\epsilon_r = 52.8$; $\rho = 1000$ kg/m³

Ambient Temperature: 22.3 °C Liquid Temperature: 21.5 °C

Phantom section: Flat Section

DASY4 Configuration:

Probe: EX3DV4 - SN3677; ConvF(7.62, 7.62, 7.62); Calibrated: 9/23/2009

Electronics: DAE4 Sn905; Calibrated: 6/24/2009

Phantom: SAM000 T01 ; Type: SAM V4.0; Serial: TP-1246

Measurement SW: DASY4, V4.7 Build 80; Postprocessing SW: SEMCAD, V1.8 Build 186

Towards Phantom Middle/Area Scan (51x91x1): Measurement grid: dx=15mm, dy=15mm

Maximum value of SAR (interpolated) = 0.188 mW/g

Towards Phantom Middle/Zoom Scan (7x7x7)/Cube 0: Measurement grid: dx=5mm, dy=5mm, dz=5mm

Reference Value = 6.95 V/m; Power Drift = -0.041 dB

Peak SAR (extrapolated) = 0.274 W/kg

SAR(1 g) = 0.167 mW/g; SAR(10 g) = 0.097 mW/g

Maximum value of SAR (measured) = 0.183 mW/g

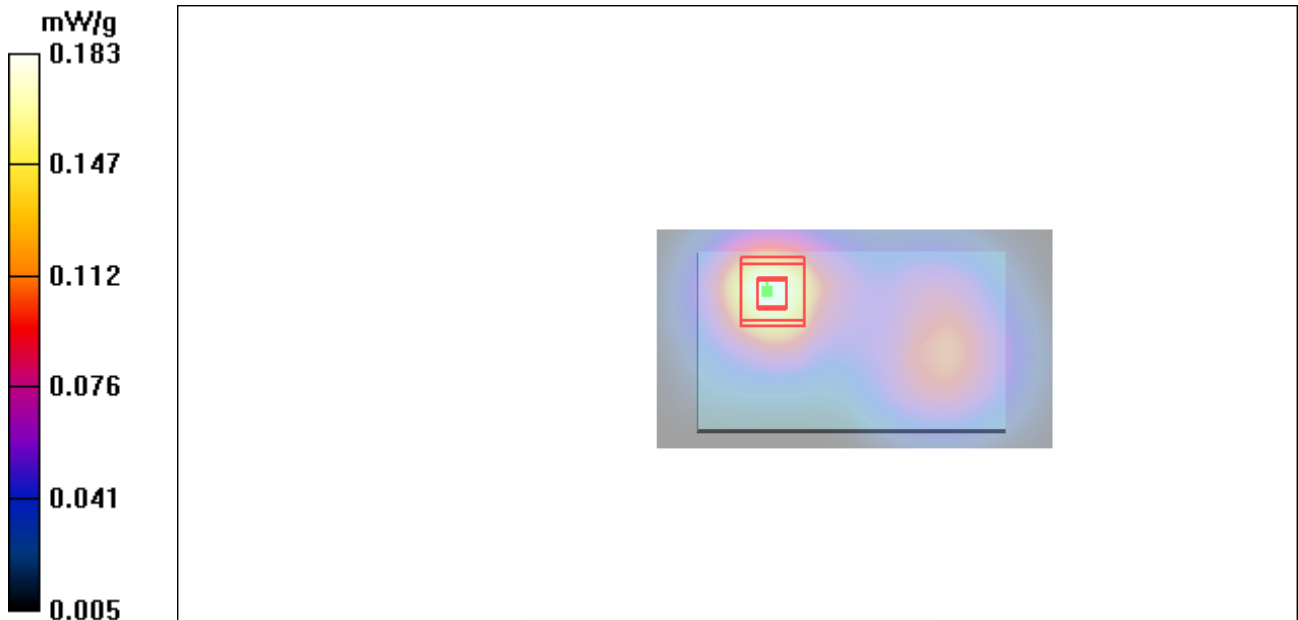


Figure 30 Body, Towards Phantom, GSM 1900 Channel 661

GSM 1900 Towards Phantom Low

Date/Time: 1/27/2010 10:19:17 PM

Communication System: PCS 1900; Frequency: 1850.2 MHz; Duty Cycle: 1:8.3

Medium parameters used (interpolated): $f = 1850.2$ MHz; $\sigma = 1.45$ mho/m; $\epsilon_r = 52.9$; $\rho = 1000$ kg/m³

Ambient Temperature: 22.3 °C Liquid Temperature: 21.5 °C

Phantom section: Flat Section

DASY4 Configuration:

Probe: EX3DV4 - SN3677; ConvF(7.62, 7.62, 7.62); Calibrated: 9/23/2009

Electronics: DAE4 Sn905; Calibrated: 6/24/2009

Phantom: SAM000 T01 ; Type: SAM V4.0; Serial: TP-1246

Measurement SW: DASY4, V4.7 Build 80; Postprocessing SW: SEMCAD, V1.8 Build 186

Towards Phantom Low/Area Scan (51x91x1): Measurement grid: dx=15mm, dy=15mm

Maximum value of SAR (interpolated) = 0.139 mW/g

Towards Phantom Low/Zoom Scan (7x7x7)/Cube 0: Measurement grid: dx=5mm, dy=5mm,

dz=5mm

Reference Value = 6.31 V/m; Power Drift = -0.101 dB

Peak SAR (extrapolated) = 0.199 W/kg

SAR(1 g) = 0.123 mW/g; SAR(10 g) = 0.073 mW/g

Maximum value of SAR (measured) = 0.136 mW/g

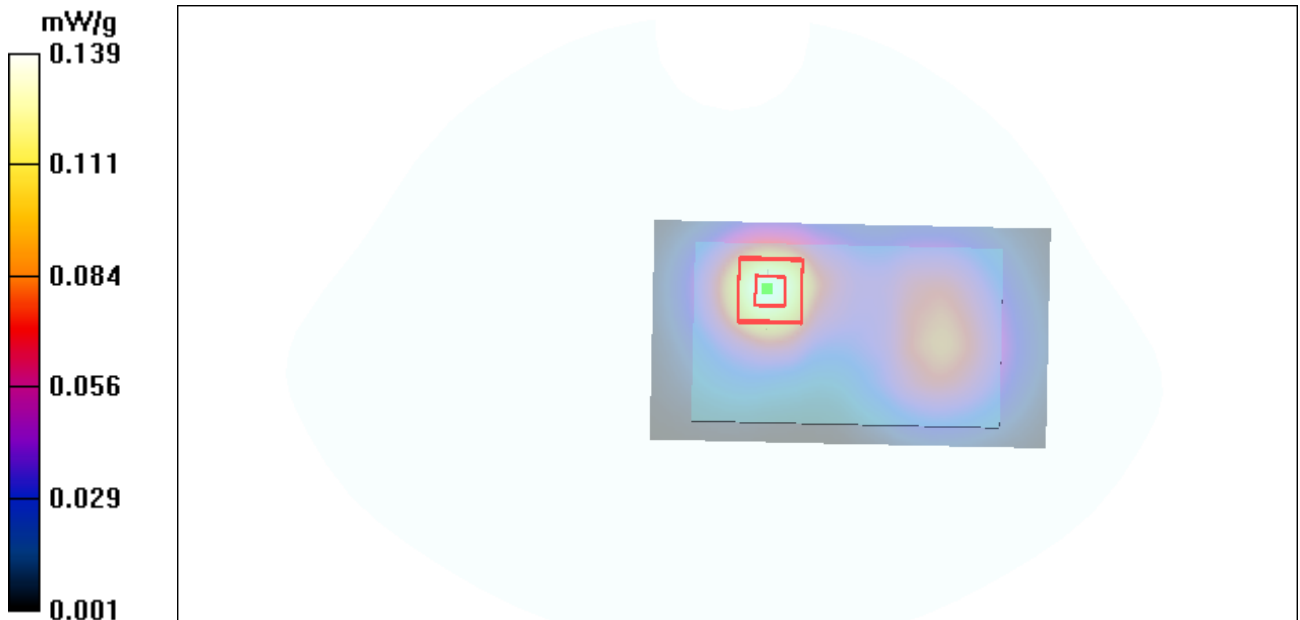


Figure 31 Body, Towards Phantom, GSM 1900 Channel 512

GSM 1900 Towards Phantom with Earphone High

Date/Time: 1/27/2010 10:58:05 PM

Communication System: PCS 1900; Frequency: 1909.8 MHz; Duty Cycle: 1:8.3

Medium parameters used: $f = 1910$ MHz; $\sigma = 1.53$ mho/m; $\epsilon_r = 52.7$; $\rho = 1000$ kg/m³

Ambient Temperature: 22.3 °C Liquid Temperature: 21.5 °C

Phantom section: Flat Section

DASY4 Configuration:

Probe: EX3DV4 - SN3677; ConvF(7.62, 7.62, 7.62); Calibrated: 9/23/2009

Electronics: DAE4 Sn905; Calibrated: 6/24/2009

Phantom: SAM000 T01 ; Type: SAM V4.0; Serial: TP-1246

Measurement SW: DASY4, V4.7 Build 80; Postprocessing SW: SEMCAD, V1.8 Build 186

Towards Phantom High/Area Scan (51x91x1): Measurement grid: dx=15mm, dy=15mm

Maximum value of SAR (interpolated) = 0.223 mW/g

Towards Phantom High/Zoom Scan (7x7x7)/Cube 0: Measurement grid: dx=5mm, dy=5mm, dz=5mm

Reference Value = 7.35 V/m; Power Drift = 0.023 dB

Peak SAR (extrapolated) = 0.343 W/kg

SAR(1 g) = 0.204 mW/g; SAR(10 g) = 0.117 mW/g

Maximum value of SAR (measured) = 0.222 mW/g

Towards Phantom High/Zoom Scan (7x7x7)/Cube 1: Measurement grid: dx=5mm, dy=5mm, dz=5mm

Reference Value = 7.35 V/m; Power Drift = 0.023 dB

Peak SAR (extrapolated) = 0.196 W/kg

SAR(1 g) = 0.129 mW/g; SAR(10 g) = 0.084 mW/g

Maximum value of SAR (measured) = 0.139 mW/g

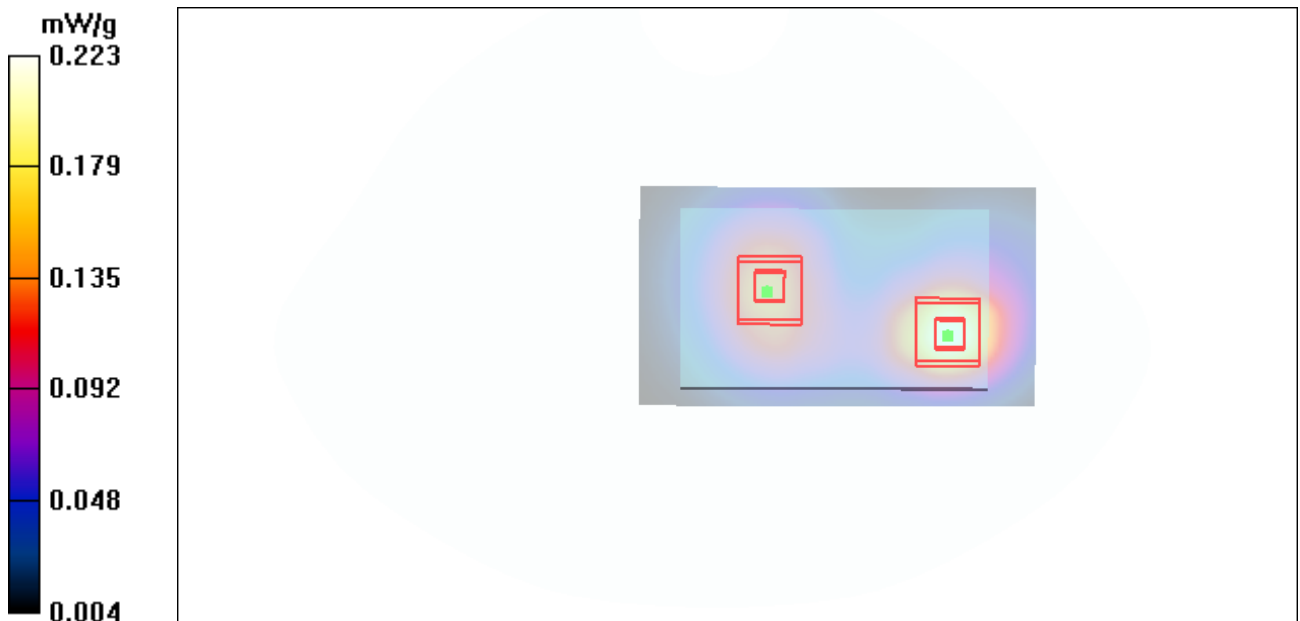


Figure 32 Body with Earphone, Towards Phantom, GSM 1900 Channel 810