

Report No.: SEWM2306000190RG02

Rev.: 01

Page: 1 of 155

# Appendix B.42

## NR Band n78(3700-3800)



Unless otherwise agreed in writing, this document is issued by the Company subject to its General Conditions of Service printed overleaf, available on request or accessible at <http://www.sgs.com/en/Terms-and-Conditions.aspx> and, for electronic format documents, subject to Terms and Conditions for Electronic Documents at <http://www.sgs.com/en/Terms-and-Conditions/Terms-e-Documents.aspx>. Attention is drawn to the limitation of liability, indemnification and jurisdiction issues defined therein. Any holder of this document is advised that information contained hereon reflects the Company's findings at the time of its intervention only and within the limits of Client's instructions, if any. The Company's sole responsibility is to its Client and this document does not exonerate parties to a transaction from exercising all their rights and obligations under the transaction documents. This document cannot be reproduced except in full, without prior written approval of the Company. Any unauthorized alteration, forgery or falsification of the content or appearance of this document is unlawful and offenders may be prosecuted to the fullest extent of the law. Unless otherwise stated the results shown in this test report refer only to the sample(s) tested and such sample(s) are retained for 30 days only.  
**Attention: To check the authenticity of testing/inspection report & certificate, please contact us at telephone: (86-755) 8307 1443, or email: CN.Doccheck@sgs.com**

SGS-CSTC Standards Technical Services (Suzhou) Co., Ltd.  
(Wireless Laboratory)

South of No. 6 Plant, No. 1, Runsheng Road, Suzhou Industrial Park, Suzhou Area, China (Jiangsu) Pilot Free Trade Zone 215000  
中国·苏州·中国(江苏)自由贸易试验区苏州片区苏州工业园区润胜路1号的6号厂房南楼 邮编: 215000

t (86-512) 62992980 www.sgs.com.cn  
t (86-512) 62992980 sgs.china@sgs.com

## Effective (Isotropic) Radiated Power Output Data for SA

### Test Result

Band	SCS	Bandwidth	Modulation	Channel	RB Config	Power	EIRP	LIMIT	verdict
N78-3700-3800	30	10	DFT-PI2BPSK	L	Inner_1RB_Left	25.98	28.92	30	PASS
N78-3700-3800	30	10	DFT-PI2BPSK	L	Inner_1RB_Right	26.11	29.05	30	PASS
N78-3700-3800	30	10	DFT-PI2BPSK	L	Outer_Full	25.57	28.51	30	PASS
N78-3700-3800	30	10	DFT-QPSK	L	Inner_1RB_Left	26.03	28.97	30	PASS
N78-3700-3800	30	10	DFT-QPSK	L	Inner_1RB_Right	26.03	28.97	30	PASS
N78-3700-3800	30	10	DFT-QPSK	L	Outer_Full	25.05	27.99	30	PASS
N78-3700-3800	30	10	DFT-16QAM	L	Inner_1RB_Left	25.03	27.97	30	PASS
N78-3700-3800	30	10	DFT-16QAM	L	Inner_1RB_Right	24.98	27.92	30	PASS
N78-3700-3800	30	10	DFT-16QAM	L	Outer_Full	24.04	26.98	30	PASS
N78-3700-3800	30	10	DFT-64QAM	L	Inner_1RB_Left	23.37	26.31	30	PASS
N78-3700-3800	30	10	DFT-64QAM	L	Inner_1RB_Right	23.45	26.39	30	PASS
N78-3700-3800	30	10	DFT-64QAM	L	Outer_Full	23.53	26.47	30	PASS
N78-3700-3800	30	10	DFT-256QAM	L	Inner_1RB_Left	21.57	24.51	30	PASS
N78-3700-3800	30	10	DFT-256QAM	L	Inner_1RB_Right	21.53	24.47	30	PASS
N78-3700-3800	30	10	DFT-256QAM	L	Outer_Full	21.56	24.5	30	PASS
N78-3700-3800	30	10	DFT-PI2BPSK	M	Inner_1RB_Left	25.94	28.88	30	PASS
N78-3700-3800	30	10	DFT-PI2BPSK	M	Inner_1RB_Right	26.01	28.95	30	PASS
N78-3700-3800	30	10	DFT-PI2BPSK	M	Outer_Full	25.57	28.51	30	PASS
N78-3700-3800	30	10	DFT-QPSK	M	Inner_1RB_Left	26.07	29.01	30	PASS
N78-3700-3800	30	10	DFT-QPSK	M	Inner_1RB_Right	26.01	28.95	30	PASS
N78-3700-3800	30	10	DFT-QPSK	M	Outer_Full	25.01	27.95	30	PASS
N78-3700-3800	30	10	DFT-16QAM	M	Inner_1RB_Left	24.9	27.84	30	PASS
N78-3700-3800	30	10	DFT-16QAM	M	Inner_1RB_Right	24.98	27.92	30	PASS
N78-3700-3800	30	10	DFT-16QAM	M	Outer_Full	24.07	27.01	30	PASS
N78-3700-3800	30	10	DFT-64QAM	M	Inner_1RB_Left	23.38	26.32	30	PASS
N78-3700-3800	30	10	DFT-64QAM	M	Inner_1RB_Right	23.46	26.4	30	PASS
N78-3700-3800	30	10	DFT-64QAM	M	Outer_Full	23.48	26.42	30	PASS
N78-3700-3800	30	10	DFT-256QAM	M	Inner_1RB_Left	21.29	24.23	30	PASS
N78-3700-3800	30	10	DFT-256QAM	M	Inner_1RB_Right	21.61	24.55	30	PASS



Unless otherwise agreed in writing, this document is issued by the Company subject to its General Conditions of Service printed overleaf, available on request or accessible at <http://www.sgs.com/en/Terms-and-Conditions.aspx> and, for electronic format documents, subject to Terms and Conditions for Electronic Documents at <http://www.sgs.com/en/Terms-and-Conditions/Terms-e-Documents.aspx>. Attention is drawn to the limitation of liability, indemnification and jurisdiction issues defined therein. Any holder of this document is advised that information contained hereon reflects the Company's findings at the time of its intervention only and within the limits of Client's instructions, if any. The Company's sole responsibility is to its Client and this document does not exonerate parties to a transaction from exercising all their rights and obligations under the transaction documents. This document cannot be reproduced except in full, without prior written approval of the Company. Any unauthorized alteration, forgery or falsification of the content or appearance of this document is unlawful and offenders may be prosecuted to the fullest extent of the law. Unless otherwise stated the results shown in this test report refer only to the sample(s) tested and such sample(s) are retained for 30 days only.

Attention: To check the authenticity of testing/inspection report & certificate, please contact us at telephone: (86-755) 8307 1443, or email: [CN.Doccheck@sgs.com](mailto:CN.Doccheck@sgs.com)

South of No. 6 Plant, No. 1, Pansheng Road, Suzhou Industrial Park, Suzhou Area, China (Jiangsu) Pilot Free Trade Zone 215000 t (86-512) 62992980 www.sgs.com.cn  
 中国·苏州·中国(江苏)自由贸易试验区苏州片区苏州工业园区海胜路1号的6号厂房南楼 邮编: 215000 t (86-512) 62992980 sgs.china@sgs.com



Report No.: SEWM2306000190RG02

Rev.: 01

Page: 3 of 155

N78-3700-3800	30	10	DFT-256QAM	M	Outer_Full	21.46	24.4	30	PASS
N78-3700-3800	30	10	DFT-PI2BPSK	H	Inner_1RB_Left	26.27	29.21	30	PASS
N78-3700-3800	30	10	DFT-PI2BPSK	H	Inner_1RB_Right	26.37	29.31	30	PASS
N78-3700-3800	30	10	DFT-PI2BPSK	H	Outer_Full	25.89	28.83	30	PASS
N78-3700-3800	30	10	DFT-QPSK	H	Inner_1RB_Left	26.35	29.29	30	PASS
N78-3700-3800	30	10	DFT-QPSK	H	Inner_1RB_Right	26.42	29.36	30	PASS
N78-3700-3800	30	10	DFT-QPSK	H	Outer_Full	25.38	28.32	30	PASS
N78-3700-3800	30	10	DFT-16QAM	H	Inner_1RB_Left	25.18	28.12	30	PASS
N78-3700-3800	30	10	DFT-16QAM	H	Inner_1RB_Right	25.37	28.31	30	PASS
N78-3700-3800	30	10	DFT-16QAM	H	Outer_Full	24.32	27.26	30	PASS
N78-3700-3800	30	10	DFT-64QAM	H	Inner_1RB_Left	23.68	26.62	30	PASS
N78-3700-3800	30	10	DFT-64QAM	H	Inner_1RB_Right	23.92	26.86	30	PASS
N78-3700-3800	30	10	DFT-64QAM	H	Outer_Full	23.86	26.8	30	PASS
N78-3700-3800	30	10	DFT-256QAM	H	Inner_1RB_Left	21.68	24.62	30	PASS
N78-3700-3800	30	10	DFT-256QAM	H	Inner_1RB_Right	21.92	24.86	30	PASS
N78-3700-3800	30	10	DFT-256QAM	H	Outer_Full	21.85	24.79	30	PASS
N78-3700-3800	30	15	DFT-PI2BPSK	L	Inner_1RB_Left	26.21	29.15	30	PASS
N78-3700-3800	30	15	DFT-PI2BPSK	L	Inner_1RB_Right	26.28	29.22	30	PASS
N78-3700-3800	30	15	DFT-PI2BPSK	L	Outer_Full	25.73	28.67	30	PASS
N78-3700-3800	30	15	DFT-QPSK	L	Inner_1RB_Left	26.18	29.12	30	PASS
N78-3700-3800	30	15	DFT-QPSK	L	Inner_1RB_Right	26.23	29.17	30	PASS
N78-3700-3800	30	15	DFT-QPSK	L	Outer_Full	25.2	28.14	30	PASS
N78-3700-3800	30	15	DFT-16QAM	L	Inner_1RB_Left	25.23	28.17	30	PASS
N78-3700-3800	30	15	DFT-16QAM	L	Inner_1RB_Right	25.23	28.17	30	PASS
N78-3700-3800	30	15	DFT-16QAM	L	Outer_Full	24.22	27.16	30	PASS
N78-3700-3800	30	15	DFT-64QAM	L	Inner_1RB_Left	23.62	26.56	30	PASS
N78-3700-3800	30	15	DFT-64QAM	L	Inner_1RB_Right	23.67	26.61	30	PASS
N78-3700-3800	30	15	DFT-64QAM	L	Outer_Full	23.75	26.69	30	PASS
N78-3700-3800	30	15	DFT-256QAM	L	Inner_1RB_Left	21.64	24.58	30	PASS
N78-3700-3800	30	15	DFT-256QAM	L	Inner_1RB_Right	21.67	24.61	30	PASS
N78-3700-3800	30	15	DFT-256QAM	L	Outer_Full	21.73	24.67	30	PASS
N78-3700-3800	30	15	DFT-PI2BPSK	M	Inner_1RB_Left	26.12	29.06	30	PASS
N78-3700-3800	30	15	DFT-PI2BPSK	M	Inner_1RB_Right	26.17	29.11	30	PASS
N78-3700-3800	30	15	DFT-PI2BPSK	M	Outer_Full	25.58	28.52	30	PASS



Unless otherwise agreed in writing, this document is issued by the Company subject to its General Conditions of Service printed overleaf, available on request or accessible at <http://www.sgs.com/en/Terms-and-Conditions.aspx> and, for electronic format documents, subject to Terms and Conditions for Electronic Documents at <http://www.sgs.com/en/Terms-and-Conditions/Terms-e-Documents.aspx>. Attention is drawn to the limitation of liability, indemnification and jurisdiction issues defined therein. Any holder of this document is advised that information contained hereon reflects the Company's findings at the time of its intervention only and within the limits of Client's instructions, if any. The Company's sole responsibility is to its Client and this document does not exonerate parties to a transaction from exercising all their rights and obligations under the transaction documents. This document cannot be reproduced except in full, without prior written approval of the Company. Any unauthorized alteration, forgery or falsification of the content or appearance of this document is unlawful and offenders may be prosecuted to the fullest extent of the law. Unless otherwise stated the results shown in this test report refer only to the sample(s) tested and such sample(s) are retained for 30 days only.

Attention: To check the authenticity of testing/inspection report & certificate, please contact us at telephone: (86-755) 8307 1443, or email: [CN.Doccheck@sgs.com](mailto:CN.Doccheck@sgs.com)

South of No. 6 Plant, No. 1, Pansheng Road, Suzhou Industrial Park, Suzhou Area, China (Jiangsu) Pilot Free Trade Zone 215000  
 中国·苏州·中国(江苏)自由贸易试验区苏州片区苏州工业园区海胜路1号的6号厂房南楼 邮编: 215000

t (86-512) 62992980 www.sgs.com.cn  
 t (86-512) 62992980 sgs.china@sgs.com



Report No.: SEWM2306000190RG02

Rev.: 01

Page: 4 of 155

N78-3700-3800	30	15	DFT-QPSK	M	Inner_1RB_Left	26.15	29.09	30	PASS
N78-3700-3800	30	15	DFT-QPSK	M	Inner_1RB_Right	26.17	29.11	30	PASS
N78-3700-3800	30	15	DFT-QPSK	M	Outer_Full	25.07	28.01	30	PASS
N78-3700-3800	30	15	DFT-16QAM	M	Inner_1RB_Left	25.11	28.05	30	PASS
N78-3700-3800	30	15	DFT-16QAM	M	Inner_1RB_Right	25.11	28.05	30	PASS
N78-3700-3800	30	15	DFT-16QAM	M	Outer_Full	24.02	26.96	30	PASS
N78-3700-3800	30	15	DFT-64QAM	M	Inner_1RB_Left	23.59	26.53	30	PASS
N78-3700-3800	30	15	DFT-64QAM	M	Inner_1RB_Right	23.41	26.35	30	PASS
N78-3700-3800	30	15	DFT-64QAM	M	Outer_Full	23.55	26.49	30	PASS
N78-3700-3800	30	15	DFT-256QAM	M	Inner_1RB_Left	21.63	24.57	30	PASS
N78-3700-3800	30	15	DFT-256QAM	M	Inner_1RB_Right	21.72	24.66	30	PASS
N78-3700-3800	30	15	DFT-256QAM	M	Outer_Full	21.59	24.53	30	PASS
N78-3700-3800	30	15	DFT-PI2BPSK	H	Inner_1RB_Left	26.22	29.16	30	PASS
N78-3700-3800	30	15	DFT-PI2BPSK	H	Inner_1RB_Right	26.47	29.41	30	PASS
N78-3700-3800	30	15	DFT-PI2BPSK	H	Outer_Full	25.84	28.78	30	PASS
N78-3700-3800	30	15	DFT-QPSK	H	Inner_1RB_Left	26.19	29.13	30	PASS
N78-3700-3800	30	15	DFT-QPSK	H	Inner_1RB_Right	26.45	29.39	30	PASS
N78-3700-3800	30	15	DFT-QPSK	H	Outer_Full	25.29	28.23	30	PASS
N78-3700-3800	30	15	DFT-16QAM	H	Inner_1RB_Left	25.22	28.16	30	PASS
N78-3700-3800	30	15	DFT-16QAM	H	Inner_1RB_Right	25.4	28.34	30	PASS
N78-3700-3800	30	15	DFT-16QAM	H	Outer_Full	24.35	27.29	30	PASS
N78-3700-3800	30	15	DFT-64QAM	H	Inner_1RB_Left	23.75	26.69	30	PASS
N78-3700-3800	30	15	DFT-64QAM	H	Inner_1RB_Right	23.86	26.8	30	PASS
N78-3700-3800	30	15	DFT-64QAM	H	Outer_Full	23.83	26.77	30	PASS
N78-3700-3800	30	15	DFT-256QAM	H	Inner_1RB_Left	21.78	24.72	30	PASS
N78-3700-3800	30	15	DFT-256QAM	H	Inner_1RB_Right	22.05	24.99	30	PASS
N78-3700-3800	30	15	DFT-256QAM	H	Outer_Full	21.84	24.78	30	PASS
N78-3700-3800	30	20	DFT-PI2BPSK	L	Inner_1RB_Left	26.14	29.08	30	PASS
N78-3700-3800	30	20	DFT-PI2BPSK	L	Inner_1RB_Right	26.21	29.15	30	PASS
N78-3700-3800	30	20	DFT-PI2BPSK	L	Outer_Full	25.66	28.6	30	PASS
N78-3700-3800	30	20	DFT-QPSK	L	Inner_1RB_Left	26.14	29.08	30	PASS
N78-3700-3800	30	20	DFT-QPSK	L	Inner_1RB_Right	26.13	29.07	30	PASS
N78-3700-3800	30	20	DFT-QPSK	L	Outer_Full	25.19	28.13	30	PASS
N78-3700-3800	30	20	DFT-16QAM	L	Inner_1RB_Left	25.05	27.99	30	PASS



Unless otherwise agreed in writing, this document is issued by the Company subject to its General Conditions of Service printed overleaf, available on request or accessible at <http://www.sgs.com/en/Terms-and-Conditions.aspx> and, for electronic format documents, subject to Terms and Conditions for Electronic Documents at <http://www.sgs.com/en/Terms-and-Conditions/Terms-e-Documents.aspx>. Attention is drawn to the limitation of liability, indemnification and jurisdiction issues defined therein. Any holder of this document is advised that information contained hereon reflects the Company's findings at the time of its intervention only and within the limits of Client's instructions, if any. The Company's sole responsibility is to its Client and this document does not exonerate parties to a transaction from exercising all their rights and obligations under the transaction documents. This document cannot be reproduced except in full, without prior written approval of the Company. Any unauthorized alteration, forgery or falsification of the content or appearance of this document is unlawful and offenders may be prosecuted to the fullest extent of the law. Unless otherwise stated the results shown in this test report refer only to the sample(s) tested and such sample(s) are retained for 30 days only.

Attention: To check the authenticity of testing/inspection report & certificate, please contact us at telephone: (86-755) 8307 1443, or email: [CN.Doccheck@sgs.com](mailto:CN.Doccheck@sgs.com)

South of No. 6 Plant, No. 1, Pansheng Road, Suzhou Industrial Park, Suzhou Area, China (Jiangsu) Pilot Free Trade Zone 215000  
 中国·苏州·中国(江苏)自由贸易试验区苏州片区苏州工业园区海胜路1号的6号厂房南楼 邮编: 215000

t (86-512) 62992980 www.sgs.com.cn  
 t (86-512) 62992980 sgs.china@sgs.com



Report No.: SEWM2306000190RG02

Rev.: 01

Page: 5 of 155

N78-3700-3800	30	20	DFT-16QAM	L	Inner_1RB_Right	25.19	28.13	30	PASS
N78-3700-3800	30	20	DFT-16QAM	L	Outer_Full	24.17	27.11	30	PASS
N78-3700-3800	30	20	DFT-64QAM	L	Inner_1RB_Left	23.57	26.51	30	PASS
N78-3700-3800	30	20	DFT-64QAM	L	Inner_1RB_Right	23.64	26.58	30	PASS
N78-3700-3800	30	20	DFT-64QAM	L	Outer_Full	23.68	26.62	30	PASS
N78-3700-3800	30	20	DFT-256QAM	L	Inner_1RB_Left	21.6	24.54	30	PASS
N78-3700-3800	30	20	DFT-256QAM	L	Inner_1RB_Right	21.75	24.69	30	PASS
N78-3700-3800	30	20	DFT-256QAM	L	Outer_Full	21.69	24.63	30	PASS
N78-3700-3800	30	20	DFT-PI2BPSK	M	Inner_1RB_Left	26.2	29.14	30	PASS
N78-3700-3800	30	20	DFT-PI2BPSK	M	Inner_1RB_Right	26.14	29.08	30	PASS
N78-3700-3800	30	20	DFT-PI2BPSK	M	Outer_Full	25.58	28.52	30	PASS
N78-3700-3800	30	20	DFT-QPSK	M	Inner_1RB_Left	26.14	29.08	30	PASS
N78-3700-3800	30	20	DFT-QPSK	M	Inner_1RB_Right	26.18	29.12	30	PASS
N78-3700-3800	30	20	DFT-QPSK	M	Outer_Full	25.07	28.01	30	PASS
N78-3700-3800	30	20	DFT-16QAM	M	Inner_1RB_Left	25.12	28.06	30	PASS
N78-3700-3800	30	20	DFT-16QAM	M	Inner_1RB_Right	25.11	28.05	30	PASS
N78-3700-3800	30	20	DFT-16QAM	M	Outer_Full	24.07	27.01	30	PASS
N78-3700-3800	30	20	DFT-64QAM	M	Inner_1RB_Left	23.61	26.55	30	PASS
N78-3700-3800	30	20	DFT-64QAM	M	Inner_1RB_Right	23.49	26.43	30	PASS
N78-3700-3800	30	20	DFT-64QAM	M	Outer_Full	23.55	26.49	30	PASS
N78-3700-3800	30	20	DFT-256QAM	M	Inner_1RB_Left	21.88	24.82	30	PASS
N78-3700-3800	30	20	DFT-256QAM	M	Inner_1RB_Right	21.64	24.58	30	PASS
N78-3700-3800	30	20	DFT-256QAM	M	Outer_Full	21.59	24.53	30	PASS
N78-3700-3800	30	20	DFT-PI2BPSK	H	Inner_1RB_Left	26.23	29.17	30	PASS
N78-3700-3800	30	20	DFT-PI2BPSK	H	Inner_1RB_Right	26.48	29.42	30	PASS
N78-3700-3800	30	20	DFT-PI2BPSK	H	Outer_Full	25.84	28.78	30	PASS
N78-3700-3800	30	20	DFT-QPSK	H	Inner_1RB_Left	26.2	29.14	30	PASS
N78-3700-3800	30	20	DFT-QPSK	H	Inner_1RB_Right	26.48	29.42	30	PASS
N78-3700-3800	30	20	DFT-QPSK	H	Outer_Full	25.32	28.26	30	PASS
N78-3700-3800	30	20	DFT-16QAM	H	Inner_1RB_Left	25.25	28.19	30	PASS
N78-3700-3800	30	20	DFT-16QAM	H	Inner_1RB_Right	25.41	28.35	30	PASS
N78-3700-3800	30	20	DFT-16QAM	H	Outer_Full	24.28	27.22	30	PASS
N78-3700-3800	30	20	DFT-64QAM	H	Inner_1RB_Left	23.66	26.6	30	PASS
N78-3700-3800	30	20	DFT-64QAM	H	Inner_1RB_Right	23.94	26.88	30	PASS



Unless otherwise agreed in writing, this document is issued by the Company subject to its General Conditions of Service printed overleaf, available on request or accessible at <http://www.sgs.com/en/Terms-and-Conditions.aspx> and, for electronic format documents, subject to Terms and Conditions for Electronic Documents at <http://www.sgs.com/en/Terms-and-Conditions/Terms-e-Documents.aspx>. Attention is drawn to the limitation of liability, indemnification and jurisdiction issues defined therein. Any holder of this document is advised that information contained hereon reflects the Company's findings at the time of its intervention only and within the limits of Client's instructions, if any. The Company's sole responsibility is to its Client and this document does not exonerate parties to a transaction from exercising all their rights and obligations under the transaction documents. This document cannot be reproduced except in full, without prior written approval of the Company. Any unauthorized alteration, forgery or falsification of the content or appearance of this document is unlawful and offenders may be prosecuted to the fullest extent of the law. Unless otherwise stated the results shown in this test report refer only to the sample(s) tested and such sample(s) are retained for 30 days only.

Attention: To check the authenticity of testing/inspection report & certificate, please contact us at telephone: (86-755) 8307 1443, or email: [CN.Doccheck@sgs.com](mailto:CN.Doccheck@sgs.com)

South of No. 6 Plant, No. 1, Pansheng Road, Suzhou Industrial Park, Suzhou Area, China (Jiangsu) Pilot Free Trade Zone 215000  
 中国·苏州·中国(江苏)自由贸易试验区苏州片区苏州工业园区海胜路1号的6号厂房南楼 邮编: 215000

t (86-512) 62992980 www.sgs.com.cn  
 t (86-512) 62992980 sgs.china@sgs.com



Report No.: SEWM2306000190RG02

Rev.: 01

Page: 6 of 155

N78-3700-3800	30	20	DFT-64QAM	H	Outer_Full	23.81	26.75	30	PASS
N78-3700-3800	30	20	DFT-256QAM	H	Inner_1RB_Left	21.78	24.72	30	PASS
N78-3700-3800	30	20	DFT-256QAM	H	Inner_1RB_Right	21.84	24.78	30	PASS
N78-3700-3800	30	20	DFT-256QAM	H	Outer_Full	21.83	24.77	30	PASS
N78-3700-3800	30	30	DFT-PI2BPSK	L	Inner_1RB_Left	26.22	29.16	30	PASS
N78-3700-3800	30	30	DFT-PI2BPSK	L	Inner_1RB_Right	26.26	29.2	30	PASS
N78-3700-3800	30	30	DFT-PI2BPSK	L	Outer_Full	25.7	28.64	30	PASS
N78-3700-3800	30	30	DFT-QPSK	L	Inner_1RB_Left	26.23	29.17	30	PASS
N78-3700-3800	30	30	DFT-QPSK	L	Inner_1RB_Right	26.28	29.22	30	PASS
N78-3700-3800	30	30	DFT-QPSK	L	Outer_Full	25.68	28.62	30	PASS
N78-3700-3800	30	30	DFT-16QAM	L	Inner_1RB_Left	25.14	28.08	30	PASS
N78-3700-3800	30	30	DFT-16QAM	L	Inner_1RB_Right	25.28	28.22	30	PASS
N78-3700-3800	30	30	DFT-16QAM	L	Outer_Full	24.16	27.1	30	PASS
N78-3700-3800	30	30	DFT-64QAM	L	Inner_1RB_Left	23.67	26.61	30	PASS
N78-3700-3800	30	30	DFT-64QAM	L	Inner_1RB_Right	23.66	26.6	30	PASS
N78-3700-3800	30	30	DFT-64QAM	L	Outer_Full	23.65	26.59	30	PASS
N78-3700-3800	30	30	DFT-256QAM	L	Inner_1RB_Left	21.64	24.58	30	PASS
N78-3700-3800	30	30	DFT-256QAM	L	Inner_1RB_Right	21.72	24.66	30	PASS
N78-3700-3800	30	30	DFT-256QAM	L	Outer_Full	21.68	24.62	30	PASS
N78-3700-3800	30	30	DFT-PI2BPSK	M	Inner_1RB_Left	26.35	29.29	30	PASS
N78-3700-3800	30	30	DFT-PI2BPSK	M	Inner_1RB_Right	26.26	29.2	30	PASS
N78-3700-3800	30	30	DFT-PI2BPSK	M	Outer_Full	25.72	28.66	30	PASS
N78-3700-3800	30	30	DFT-QPSK	M	Inner_1RB_Left	26.37	29.31	30	PASS
N78-3700-3800	30	30	DFT-QPSK	M	Inner_1RB_Right	26.27	29.21	30	PASS
N78-3700-3800	30	30	DFT-QPSK	M	Outer_Full	25.19	28.13	30	PASS
N78-3700-3800	30	30	DFT-16QAM	M	Inner_1RB_Left	25.25	28.19	30	PASS
N78-3700-3800	30	30	DFT-16QAM	M	Inner_1RB_Right	25.23	28.17	30	PASS
N78-3700-3800	30	30	DFT-16QAM	M	Outer_Full	24.16	27.1	30	PASS
N78-3700-3800	30	30	DFT-64QAM	M	Inner_1RB_Left	23.84	26.78	30	PASS
N78-3700-3800	30	30	DFT-64QAM	M	Inner_1RB_Right	23.72	26.66	30	PASS
N78-3700-3800	30	30	DFT-64QAM	M	Outer_Full	23.7	26.64	30	PASS
N78-3700-3800	30	30	DFT-256QAM	M	Inner_1RB_Left	21.81	24.75	30	PASS
N78-3700-3800	30	30	DFT-256QAM	M	Inner_1RB_Right	21.8	24.74	30	PASS
N78-3700-3800	30	30	DFT-256QAM	M	Outer_Full	21.74	24.68	30	PASS



Unless otherwise agreed in writing, this document is issued by the Company subject to its General Conditions of Service printed overleaf, available on request or accessible at <http://www.sgs.com/en/Terms-and-Conditions.aspx> and, for electronic format documents, subject to Terms and Conditions for Electronic Documents at <http://www.sgs.com/en/Terms-and-Conditions/Terms-e-Documents.aspx>. Attention is drawn to the limitation of liability, indemnification and jurisdiction issues defined therein. Any holder of this document is advised that information contained hereon reflects the Company's findings at the time of its intervention only and within the limits of Client's instructions, if any. The Company's sole responsibility is to its Client and this document does not exonerate parties to a transaction from exercising all their rights and obligations under the transaction documents. This document cannot be reproduced except in full, without prior written approval of the Company. Any unauthorized alteration, forgery or falsification of the content or appearance of this document is unlawful and offenders may be prosecuted to the fullest extent of the law. Unless otherwise stated the results shown in this test report refer only to the sample(s) tested and such sample(s) are retained for 30 days only.

Attention: To check the authenticity of testing/inspection report & certificate, please contact us at telephone: (86-755) 8307 1443, or email: [CN.Doccheck@sgs.com](mailto:CN.Doccheck@sgs.com)

South of No. 6 Plant, No. 1, Pansheng Road, Suzhou Industrial Park, Suzhou Area, China (Jiangsu) Pilot Free Trade Zone 215000  
 中国·苏州·中国(江苏)自由贸易试验区苏州片区苏州工业园区海胜路1号的6号厂房南楼 邮编: 215000

t (86-512) 62992980 www.sgs.com.cn  
 t (86-512) 62992980 sgs.china@sgs.com



Report No.: SEWM2306000190RG02

Rev.: 01

Page: 7 of 155

N78-3700-3800	30	30	DFT-PI2BPSK	H	Inner_1RB_Left	26.37	29.31	30	PASS
N78-3700-3800	30	30	DFT-PI2BPSK	H	Inner_1RB_Right	26.64	29.58	30	PASS
N78-3700-3800	30	30	DFT-PI2BPSK	H	Outer_Full	25.96	28.9	30	PASS
N78-3700-3800	30	30	DFT-QPSK	H	Inner_1RB_Left	26.42	29.36	30	PASS
N78-3700-3800	30	30	DFT-QPSK	H	Inner_1RB_Right	26.62	29.56	30	PASS
N78-3700-3800	30	30	DFT-QPSK	H	Outer_Full	25.42	28.36	30	PASS
N78-3700-3800	30	30	DFT-16QAM	H	Inner_1RB_Left	25.32	28.26	30	PASS
N78-3700-3800	30	30	DFT-16QAM	H	Inner_1RB_Right	25.66	28.6	30	PASS
N78-3700-3800	30	30	DFT-16QAM	H	Outer_Full	24.42	27.36	30	PASS
N78-3700-3800	30	30	DFT-64QAM	H	Inner_1RB_Left	23.87	26.81	30	PASS
N78-3700-3800	30	30	DFT-64QAM	H	Inner_1RB_Right	23.98	26.92	30	PASS
N78-3700-3800	30	30	DFT-64QAM	H	Outer_Full	23.84	26.78	30	PASS
N78-3700-3800	30	30	DFT-256QAM	H	Inner_1RB_Left	21.87	24.81	30	PASS
N78-3700-3800	30	30	DFT-256QAM	H	Inner_1RB_Right	22.21	25.15	30	PASS
N78-3700-3800	30	30	DFT-256QAM	H	Outer_Full	21.93	24.87	30	PASS
N78-3700-3800	30	40	DFT-PI2BPSK	L	Inner_1RB_Left	26.3	29.24	30	PASS
N78-3700-3800	30	40	DFT-PI2BPSK	L	Inner_1RB_Right	26.38	29.32	30	PASS
N78-3700-3800	30	40	DFT-PI2BPSK	L	Outer_Full	25.69	28.63	30	PASS
N78-3700-3800	30	40	DFT-QPSK	L	Inner_1RB_Left	26.29	29.23	30	PASS
N78-3700-3800	30	40	DFT-QPSK	L	Inner_1RB_Right	26.39	29.33	30	PASS
N78-3700-3800	30	40	DFT-QPSK	L	Outer_Full	25.23	28.17	30	PASS
N78-3700-3800	30	40	DFT-16QAM	L	Inner_1RB_Left	25.23	28.17	30	PASS
N78-3700-3800	30	40	DFT-16QAM	L	Inner_1RB_Right	25.27	28.21	30	PASS
N78-3700-3800	30	40	DFT-16QAM	L	Outer_Full	24.2	27.14	30	PASS
N78-3700-3800	30	40	DFT-64QAM	L	Inner_1RB_Left	23.84	26.78	30	PASS
N78-3700-3800	30	40	DFT-64QAM	L	Inner_1RB_Right	23.74	26.68	30	PASS
N78-3700-3800	30	40	DFT-64QAM	L	Outer_Full	23.77	26.71	30	PASS
N78-3700-3800	30	40	DFT-256QAM	L	Inner_1RB_Left	21.78	24.72	30	PASS
N78-3700-3800	30	40	DFT-256QAM	L	Inner_1RB_Right	21.72	24.66	30	PASS
N78-3700-3800	30	40	DFT-256QAM	L	Outer_Full	21.72	24.66	30	PASS
N78-3700-3800	30	40	DFT-PI2BPSK	M	Inner_1RB_Left	26.52	29.46	30	PASS
N78-3700-3800	30	40	DFT-PI2BPSK	M	Inner_1RB_Right	26.34	29.28	30	PASS
N78-3700-3800	30	40	DFT-PI2BPSK	M	Outer_Full	25.73	28.67	30	PASS
N78-3700-3800	30	40	DFT-QPSK	M	Inner_1RB_Left	26.43	29.37	30	PASS



Unless otherwise agreed in writing, this document is issued by the Company subject to its General Conditions of Service printed overleaf, available on request or accessible at <http://www.sgs.com/en/Terms-and-Conditions.aspx> and, for electronic format documents, subject to Terms and Conditions for Electronic Documents at <http://www.sgs.com/en/Terms-and-Conditions/Terms-e-Documents.aspx>. Attention is drawn to the limitation of liability, indemnification and jurisdiction issues defined therein. Any holder of this document is advised that information contained hereon reflects the Company's findings at the time of its intervention only and within the limits of Client's instructions, if any. The Company's sole responsibility is to its Client and this document does not exonerate parties to a transaction from exercising all their rights and obligations under the transaction documents. This document cannot be reproduced except in full, without prior written approval of the Company. Any unauthorized alteration, forgery or falsification of the content or appearance of this document is unlawful and offenders may be prosecuted to the fullest extent of the law. Unless otherwise stated the results shown in this test report refer only to the sample(s) tested and such sample(s) are retained for 30 days only.

Attention: To check the authenticity of testing/inspection report & certificate, please contact us at telephone: (86-755) 8307 1443, or email: [CN.Doccheck@sgs.com](mailto:CN.Doccheck@sgs.com)

South of No. 6 Plant, No. 1, Pansheng Road, Suzhou Industrial Park, Suzhou Area, China (Jiangsu) Pilot Free Trade Zone 215000  
 中国·苏州·中国(江苏)自由贸易试验区苏州片区苏州工业园区海胜路1号的6号厂房南楼 邮编: 215000

t (86-512) 62992980 www.sgs.com.cn  
 t (86-512) 62992980 sgs.china@sgs.com



Report No.: SEWM2306000190RG02

Rev.: 01

Page: 8 of 155

N78-3700-3800	30	40	DFT-QPSK	M	Inner_1RB_Right	26.34	29.28	30	PASS
N78-3700-3800	30	40	DFT-QPSK	M	Outer_Full	25.23	28.17	30	PASS
N78-3700-3800	30	40	DFT-16QAM	M	Inner_1RB_Left	25.39	28.33	30	PASS
N78-3700-3800	30	40	DFT-16QAM	M	Inner_1RB_Right	25.25	28.19	30	PASS
N78-3700-3800	30	40	DFT-16QAM	M	Outer_Full	24.23	27.17	30	PASS
N78-3700-3800	30	40	DFT-64QAM	M	Inner_1RB_Left	23.84	26.78	30	PASS
N78-3700-3800	30	40	DFT-64QAM	M	Inner_1RB_Right	23.69	26.63	30	PASS
N78-3700-3800	30	40	DFT-64QAM	M	Outer_Full	23.74	26.68	30	PASS
N78-3700-3800	30	40	DFT-256QAM	M	Inner_1RB_Left	21.95	24.89	30	PASS
N78-3700-3800	30	40	DFT-256QAM	M	Inner_1RB_Right	21.74	24.68	30	PASS
N78-3700-3800	30	40	DFT-256QAM	M	Outer_Full	21.75	24.69	30	PASS
N78-3700-3800	30	40	DFT-PI2BPSK	H	Inner_1RB_Left	26.27	29.21	30	PASS
N78-3700-3800	30	40	DFT-PI2BPSK	H	Inner_1RB_Right	26.43	29.37	30	PASS
N78-3700-3800	30	40	DFT-PI2BPSK	H	Outer_Full	26.63	29.57	30	PASS
N78-3700-3800	30	40	DFT-QPSK	H	Inner_1RB_Left	26.26	29.2	30	PASS
N78-3700-3800	30	40	DFT-QPSK	H	Inner_1RB_Right	26.46	29.4	30	PASS
N78-3700-3800	30	40	DFT-QPSK	H	Outer_Full	25.15	28.09	30	PASS
N78-3700-3800	30	40	DFT-16QAM	H	Inner_1RB_Left	25.29	28.23	30	PASS
N78-3700-3800	30	40	DFT-16QAM	H	Inner_1RB_Right	25.4	28.34	30	PASS
N78-3700-3800	30	40	DFT-16QAM	H	Outer_Full	24.15	27.09	30	PASS
N78-3700-3800	30	40	DFT-64QAM	H	Inner_1RB_Left	23.64	26.58	30	PASS
N78-3700-3800	30	40	DFT-64QAM	H	Inner_1RB_Right	23.98	26.92	30	PASS
N78-3700-3800	30	40	DFT-64QAM	H	Outer_Full	23.61	26.55	30	PASS
N78-3700-3800	30	40	DFT-256QAM	H	Inner_1RB_Left	21.8	24.74	30	PASS
N78-3700-3800	30	40	DFT-256QAM	H	Inner_1RB_Right	21.94	24.88	30	PASS
N78-3700-3800	30	40	DFT-256QAM	H	Outer_Full	21.64	24.58	30	PASS
N78-3700-3800	30	50	DFT-PI2BPSK	L	Inner_1RB_Left	26.15	29.09	30	PASS
N78-3700-3800	30	50	DFT-PI2BPSK	L	Inner_1RB_Right	26.01	28.95	30	PASS
N78-3700-3800	30	50	DFT-PI2BPSK	L	Outer_Full	25.69	28.63	30	PASS
N78-3700-3800	30	50	DFT-QPSK	L	Inner_1RB_Left	26.11	29.05	30	PASS
N78-3700-3800	30	50	DFT-QPSK	L	Inner_1RB_Right	25.92	28.86	30	PASS
N78-3700-3800	30	50	DFT-QPSK	L	Outer_Full	25.19	28.13	30	PASS
N78-3700-3800	30	50	DFT-16QAM	L	Inner_1RB_Left	25.04	27.98	30	PASS
N78-3700-3800	30	50	DFT-16QAM	L	Inner_1RB_Right	24.89	27.83	30	PASS



Unless otherwise agreed in writing, this document is issued by the Company subject to its General Conditions of Service printed overleaf, available on request or accessible at <http://www.sgs.com/en/Terms-and-Conditions.aspx> and, for electronic format documents, subject to Terms and Conditions for Electronic Documents at <http://www.sgs.com/en/Terms-and-Conditions/Terms-e-Documents.aspx>. Attention is drawn to the limitation of liability, indemnification and jurisdiction issues defined therein. Any holder of this document is advised that information contained hereon reflects the Company's findings at the time of its intervention only and within the limits of Client's instructions, if any. The Company's sole responsibility is to its Client and this document does not exonerate parties to a transaction from exercising all their rights and obligations under the transaction documents. This document cannot be reproduced except in full, without prior written approval of the Company. Any unauthorized alteration, forgery or falsification of the content or appearance of this document is unlawful and offenders may be prosecuted to the fullest extent of the law. Unless otherwise stated the results shown in this test report refer only to the sample(s) tested and such sample(s) are retained for 30 days only.

Attention: To check the authenticity of testing/inspection report & certificate, please contact us at telephone: (86-755) 8307 1443, or email: [CN.Doccheck@sgs.com](mailto:CN.Doccheck@sgs.com)

South of No. 6 Plant, No. 1, Pansheng Road, Suzhou Industrial Park, Suzhou Area, China (Jiangsu) Pilot Free Trade Zone 215000  
 中国·苏州·中国(江苏)自由贸易试验区苏州片区苏州工业园区海胜路1号的6号厂房南楼 邮编: 215000

t (86-512) 62992980 www.sgs.com.cn  
 t (86-512) 62992980 sgs.china@sgs.com





Report No.: SEWM2306000190RG02

Rev.: 01

Page: 9 of 155

N78-3700-3800	30	50	DFT-16QAM	L	Outer_Full	24.19	27.13	30	PASS
N78-3700-3800	30	50	DFT-64QAM	L	Inner_1RB_Left	23.61	26.55	30	PASS
N78-3700-3800	30	50	DFT-64QAM	L	Inner_1RB_Right	23.29	26.23	30	PASS
N78-3700-3800	30	50	DFT-64QAM	L	Outer_Full	23.69	26.63	30	PASS
N78-3700-3800	30	50	DFT-256QAM	L	Inner_1RB_Left	21.7	24.64	30	PASS
N78-3700-3800	30	50	DFT-256QAM	L	Inner_1RB_Right	21.45	24.39	30	PASS
N78-3700-3800	30	50	DFT-256QAM	L	Outer_Full	21.73	24.67	30	PASS
N78-3700-3800	30	50	DFT-PI2BPSK	M	Inner_1RB_Left	26.16	29.1	30	PASS
N78-3700-3800	30	50	DFT-PI2BPSK	M	Inner_1RB_Right	25.97	28.91	30	PASS
N78-3700-3800	30	50	DFT-PI2BPSK	M	Outer_Full	25.52	28.46	30	PASS
N78-3700-3800	30	50	DFT-QPSK	M	Inner_1RB_Left	26.14	29.08	30	PASS
N78-3700-3800	30	50	DFT-QPSK	M	Inner_1RB_Right	26.01	28.95	30	PASS
N78-3700-3800	30	50	DFT-QPSK	M	Outer_Full	24.99	27.93	30	PASS
N78-3700-3800	30	50	DFT-16QAM	M	Inner_1RB_Left	25.07	28.01	30	PASS
N78-3700-3800	30	50	DFT-16QAM	M	Inner_1RB_Right	24.91	27.85	30	PASS
N78-3700-3800	30	50	DFT-16QAM	M	Outer_Full	23.94	26.88	30	PASS
N78-3700-3800	30	50	DFT-64QAM	M	Inner_1RB_Left	23.59	26.53	30	PASS
N78-3700-3800	30	50	DFT-64QAM	M	Inner_1RB_Right	23.42	26.36	30	PASS
N78-3700-3800	30	50	DFT-64QAM	M	Outer_Full	23.46	26.4	30	PASS
N78-3700-3800	30	50	DFT-256QAM	M	Inner_1RB_Left	21.66	24.6	30	PASS
N78-3700-3800	30	50	DFT-256QAM	M	Inner_1RB_Right	21.34	24.28	30	PASS
N78-3700-3800	30	50	DFT-256QAM	M	Outer_Full	21.49	24.43	30	PASS
N78-3700-3800	30	50	DFT-PI2BPSK	H	Inner_1RB_Left	25.86	28.8	30	PASS
N78-3700-3800	30	50	DFT-PI2BPSK	H	Inner_1RB_Right	26.11	29.05	30	PASS
N78-3700-3800	30	50	DFT-PI2BPSK	H	Outer_Full	25.45	28.39	30	PASS
N78-3700-3800	30	50	DFT-QPSK	H	Inner_1RB_Left	25.79	28.73	30	PASS
N78-3700-3800	30	50	DFT-QPSK	H	Inner_1RB_Right	26.06	29	30	PASS
N78-3700-3800	30	50	DFT-QPSK	H	Outer_Full	24.94	27.88	30	PASS
N78-3700-3800	30	50	DFT-16QAM	H	Inner_1RB_Left	24.83	27.77	30	PASS
N78-3700-3800	30	50	DFT-16QAM	H	Inner_1RB_Right	24.98	27.92	30	PASS
N78-3700-3800	30	50	DFT-16QAM	H	Outer_Full	23.91	26.85	30	PASS
N78-3700-3800	30	50	DFT-64QAM	H	Inner_1RB_Left	23.32	26.26	30	PASS
N78-3700-3800	30	50	DFT-64QAM	H	Inner_1RB_Right	23.47	26.41	30	PASS
N78-3700-3800	30	50	DFT-64QAM	H	Outer_Full	23.43	26.37	30	PASS



Unless otherwise agreed in writing, this document is issued by the Company subject to its General Conditions of Service printed overleaf, available on request or accessible at <http://www.sgs.com/en/Terms-and-Conditions.aspx> and, for electronic format documents, subject to Terms and Conditions for Electronic Documents at <http://www.sgs.com/en/Terms-and-Conditions/Terms-e-Documents.aspx>. Attention is drawn to the limitation of liability, indemnification and jurisdiction issues defined therein. Any holder of this document is advised that information contained hereon reflects the Company's findings at the time of its intervention only and within the limits of Client's instructions, if any. The Company's sole responsibility is to its Client and this document does not exonerate parties to a transaction from exercising all their rights and obligations under the transaction documents. This document cannot be reproduced except in full, without prior written approval of the Company. Any unauthorized alteration, forgery or falsification of the content or appearance of this document is unlawful and offenders may be prosecuted to the fullest extent of the law. Unless otherwise stated the results shown in this test report refer only to the sample(s) tested and such sample(s) are retained for 30 days only.

Attention: To check the authenticity of testing/inspection report & certificate, please contact us at telephone: (86-755) 8307 1443, or email: [CN.Doccheck@sgs.com](mailto:CN.Doccheck@sgs.com)

South of No. 6 Plant, No. 1, Pansheng Road, Suzhou Industrial Park, Suzhou Area, China (Jiangsu) Pilot Free Trade Zone 215000  
 中国·苏州·中国(江苏)自由贸易试验区苏州片区苏州工业园区海胜路1号的6号厂房南楼 邮编: 215000

t (86-512) 62992980 www.sgs.com.cn  
 t (86-512) 62992980 sgs.china@sgs.com



Report No.: SEWM2306000190RG02

Rev.: 01

Page: 10 of 155

N78-3700-3800	30	50	DFT-256QAM	H	Inner_1RB_Left	21.39	24.33	30	PASS
N78-3700-3800	30	50	DFT-256QAM	H	Inner_1RB_Right	21.67	24.61	30	PASS
N78-3700-3800	30	50	DFT-256QAM	H	Outer_Full	21.36	24.3	30	PASS
N78-3700-3800	30	60	DFT-PI2BPSK	L	Inner_1RB_Left	26.04	28.98	30	PASS
N78-3700-3800	30	60	DFT-PI2BPSK	L	Inner_1RB_Right	26.01	28.95	30	PASS
N78-3700-3800	30	60	DFT-PI2BPSK	L	Outer_Full	25.66	28.6	30	PASS
N78-3700-3800	30	60	DFT-QPSK	L	Inner_1RB_Left	26.03	28.97	30	PASS
N78-3700-3800	30	60	DFT-QPSK	L	Inner_1RB_Right	26	28.94	30	PASS
N78-3700-3800	30	60	DFT-QPSK	L	Outer_Full	25.15	28.09	30	PASS
N78-3700-3800	30	60	DFT-16QAM	L	Inner_1RB_Left	25.05	27.99	30	PASS
N78-3700-3800	30	60	DFT-16QAM	L	Inner_1RB_Right	24.91	27.85	30	PASS
N78-3700-3800	30	60	DFT-16QAM	L	Outer_Full	24.15	27.09	30	PASS
N78-3700-3800	30	60	DFT-64QAM	L	Inner_1RB_Left	23.55	26.49	30	PASS
N78-3700-3800	30	60	DFT-64QAM	L	Inner_1RB_Right	23.57	26.51	30	PASS
N78-3700-3800	30	60	DFT-64QAM	L	Outer_Full	23.65	26.59	30	PASS
N78-3700-3800	30	60	DFT-256QAM	L	Inner_1RB_Left	21.43	24.37	30	PASS
N78-3700-3800	30	60	DFT-256QAM	L	Inner_1RB_Right	21.46	24.4	30	PASS
N78-3700-3800	30	60	DFT-256QAM	L	Outer_Full	21.68	24.62	30	PASS
N78-3700-3800	30	60	DFT-PI2BPSK	M	Inner_1RB_Left	26.08	29.02	30	PASS
N78-3700-3800	30	60	DFT-PI2BPSK	M	Inner_1RB_Right	26.01	28.95	30	PASS
N78-3700-3800	30	60	DFT-PI2BPSK	M	Outer_Full	25.57	28.51	30	PASS
N78-3700-3800	30	60	DFT-QPSK	M	Inner_1RB_Left	26.09	29.03	30	PASS
N78-3700-3800	30	60	DFT-QPSK	M	Inner_1RB_Right	25.98	28.92	30	PASS
N78-3700-3800	30	60	DFT-QPSK	M	Outer_Full	24.97	27.91	30	PASS
N78-3700-3800	30	60	DFT-16QAM	M	Inner_1RB_Left	25.03	27.97	30	PASS
N78-3700-3800	30	60	DFT-16QAM	M	Inner_1RB_Right	24.94	27.88	30	PASS
N78-3700-3800	30	60	DFT-16QAM	M	Outer_Full	24.01	26.95	30	PASS
N78-3700-3800	30	60	DFT-64QAM	M	Inner_1RB_Left	23.58	26.52	30	PASS
N78-3700-3800	30	60	DFT-64QAM	M	Inner_1RB_Right	23.43	26.37	30	PASS
N78-3700-3800	30	60	DFT-64QAM	M	Outer_Full	23.47	26.41	30	PASS
N78-3700-3800	30	60	DFT-256QAM	M	Inner_1RB_Left	21.53	24.47	30	PASS
N78-3700-3800	30	60	DFT-256QAM	M	Inner_1RB_Right	21.51	24.45	30	PASS
N78-3700-3800	30	60	DFT-256QAM	M	Outer_Full	21.43	24.37	30	PASS
N78-3700-3800	30	60	DFT-PI2BPSK	H	Inner_1RB_Left	25.91	28.85	30	PASS



Unless otherwise agreed in writing, this document is issued by the Company subject to its General Conditions of Service printed overleaf, available on request or accessible at <http://www.sgs.com/en/Terms-and-Conditions.aspx> and, for electronic format documents, subject to Terms and Conditions for Electronic Documents at <http://www.sgs.com/en/Terms-and-Conditions/Terms-e-Documents.aspx>. Attention is drawn to the limitation of liability, indemnification and jurisdiction issues defined therein. Any holder of this document is advised that information contained hereon reflects the Company's findings at the time of its intervention only and within the limits of Client's instructions, if any. The Company's sole responsibility is to its Client and this document does not exonerate parties to a transaction from exercising all their rights and obligations under the transaction documents. This document cannot be reproduced except in full, without prior written approval of the Company. Any unauthorized alteration, forgery or falsification of the content or appearance of this document is unlawful and offenders may be prosecuted to the fullest extent of the law. Unless otherwise stated the results shown in this test report refer only to the sample(s) tested and such sample(s) are retained for 30 days only.

Attention: To check the authenticity of testing/inspection report & certificate, please contact us at telephone: (86-755) 8307 1443, or email: [CN.Doccheck@sgs.com](mailto:CN.Doccheck@sgs.com)

South of No. 6 Plant, No. 1, Pansheng Road, Suzhou Industrial Park, Suzhou Area, China (Jiangsu) Pilot Free Trade Zone 215000  
 中国·苏州·中国(江苏)自由贸易试验区苏州片区苏州工业园区海胜路1号的6号厂房南楼 邮编: 215000

t (86-512) 62992980 www.sgs.com.cn  
 t (86-512) 62992980 sgs.china@sgs.com



Report No.: SEWM2306000190RG02

Rev.: 01

Page: 11 of 155

N78-3700-3800	30	60	DFT-PI2BPSK	H	Inner_1RB_Right	26.19	29.13	30	PASS
N78-3700-3800	30	60	DFT-PI2BPSK	H	Outer_Full	25.48	28.42	30	PASS
N78-3700-3800	30	60	DFT-QPSK	H	Inner_1RB_Left	25.99	28.93	30	PASS
N78-3700-3800	30	60	DFT-QPSK	H	Inner_1RB_Right	26.19	29.13	30	PASS
N78-3700-3800	30	60	DFT-QPSK	H	Outer_Full	24.96	27.9	30	PASS
N78-3700-3800	30	60	DFT-16QAM	H	Inner_1RB_Left	24.8	27.74	30	PASS
N78-3700-3800	30	60	DFT-16QAM	H	Inner_1RB_Right	25.19	28.13	30	PASS
N78-3700-3800	30	60	DFT-16QAM	H	Outer_Full	23.89	26.83	30	PASS
N78-3700-3800	30	60	DFT-64QAM	H	Inner_1RB_Left	23.3	26.24	30	PASS
N78-3700-3800	30	60	DFT-64QAM	H	Inner_1RB_Right	23.76	26.7	30	PASS
N78-3700-3800	30	60	DFT-64QAM	H	Outer_Full	23.43	26.37	30	PASS
N78-3700-3800	30	60	DFT-256QAM	H	Inner_1RB_Left	21.42	24.36	30	PASS
N78-3700-3800	30	60	DFT-256QAM	H	Inner_1RB_Right	21.68	24.62	30	PASS
N78-3700-3800	30	60	DFT-256QAM	H	Outer_Full	21.46	24.4	30	PASS
N78-3700-3800	30	70	DFT-PI2BPSK	L	Inner_1RB_Left	25.93	28.87	30	PASS
N78-3700-3800	30	70	DFT-PI2BPSK	L	Inner_1RB_Right	25.94	28.88	30	PASS
N78-3700-3800	30	70	DFT-PI2BPSK	L	Outer_Full	25.59	28.53	30	PASS
N78-3700-3800	30	70	DFT-QPSK	L	Inner_1RB_Left	25.92	28.86	30	PASS
N78-3700-3800	30	70	DFT-QPSK	L	Inner_1RB_Right	25.95	28.89	30	PASS
N78-3700-3800	30	70	DFT-QPSK	L	Outer_Full	25.07	28.01	30	PASS
N78-3700-3800	30	70	DFT-16QAM	L	Inner_1RB_Left	24.88	27.82	30	PASS
N78-3700-3800	30	70	DFT-16QAM	L	Inner_1RB_Right	24.87	27.81	30	PASS
N78-3700-3800	30	70	DFT-16QAM	L	Outer_Full	24.08	27.02	30	PASS
N78-3700-3800	30	70	DFT-64QAM	L	Inner_1RB_Left	23.4	26.34	30	PASS
N78-3700-3800	30	70	DFT-64QAM	L	Inner_1RB_Right	23.28	26.22	30	PASS
N78-3700-3800	30	70	DFT-64QAM	L	Outer_Full	23.54	26.48	30	PASS
N78-3700-3800	30	70	DFT-256QAM	L	Inner_1RB_Left	21.48	24.42	30	PASS
N78-3700-3800	30	70	DFT-256QAM	L	Inner_1RB_Right	21.49	24.43	30	PASS
N78-3700-3800	30	70	DFT-256QAM	L	Outer_Full	21.51	24.45	30	PASS
N78-3700-3800	30	70	DFT-PI2BPSK	M	Inner_1RB_Left	26.02	28.96	30	PASS
N78-3700-3800	30	70	DFT-PI2BPSK	M	Inner_1RB_Right	25.85	28.79	30	PASS
N78-3700-3800	30	70	DFT-PI2BPSK	M	Outer_Full	25.48	28.42	30	PASS
N78-3700-3800	30	70	DFT-QPSK	M	Inner_1RB_Left	26.05	28.99	30	PASS
N78-3700-3800	30	70	DFT-QPSK	M	Inner_1RB_Right	25.87	28.81	30	PASS



Unless otherwise agreed in writing, this document is issued by the Company subject to its General Conditions of Service printed overleaf, available on request or accessible at <http://www.sgs.com/en/Terms-and-Conditions.aspx> and, for electronic format documents, subject to Terms and Conditions for Electronic Documents at <http://www.sgs.com/en/Terms-and-Conditions/Terms-e-Documents.aspx>. Attention is drawn to the limitation of liability, indemnification and jurisdiction issues defined therein. Any holder of this document is advised that information contained hereon reflects the Company's findings at the time of its intervention only and within the limits of Client's instructions, if any. The Company's sole responsibility is to its Client and this document does not exonerate parties to a transaction from exercising all their rights and obligations under the transaction documents. This document cannot be reproduced except in full, without prior written approval of the Company. Any unauthorized alteration, forgery or falsification of the content or appearance of this document is unlawful and offenders may be prosecuted to the fullest extent of the law. Unless otherwise stated the results shown in this test report refer only to the sample(s) tested and such sample(s) are retained for 30 days only.

Attention: To check the authenticity of testing/inspection report & certificate, please contact us at telephone: (86-755) 8307 1443, or email: [CN.Doccheck@sgs.com](mailto:CN.Doccheck@sgs.com)

South of No. 6 Plant, No. 1, Pansheng Road, Suzhou Industrial Park, Suzhou Area, China (Jiangsu) Pilot Free Trade Zone 215000  
 中国·苏州·中国(江苏)自由贸易试验区苏州片区苏州工业园区海胜路1号的6号厂房南楼 邮编: 215000

t (86-512) 62992980 www.sgs.com.cn  
 t (86-512) 62992980 sgs.china@sgs.com



Report No.: SEWM2306000190RG02

Rev.: 01

Page: 12 of 155

N78-3700-3800	30	70	DFT-QPSK	M	Outer_Full	24.97	27.91	30	PASS
N78-3700-3800	30	70	DFT-16QAM	M	Inner_1RB_Left	24.96	27.9	30	PASS
N78-3700-3800	30	70	DFT-16QAM	M	Inner_1RB_Right	24.86	27.8	30	PASS
N78-3700-3800	30	70	DFT-16QAM	M	Outer_Full	23.94	26.88	30	PASS
N78-3700-3800	30	70	DFT-64QAM	M	Inner_1RB_Left	23.44	26.38	30	PASS
N78-3700-3800	30	70	DFT-64QAM	M	Inner_1RB_Right	23.24	26.18	30	PASS
N78-3700-3800	30	70	DFT-64QAM	M	Outer_Full	23.47	26.41	30	PASS
N78-3700-3800	30	70	DFT-256QAM	M	Inner_1RB_Left	21.59	24.53	30	PASS
N78-3700-3800	30	70	DFT-256QAM	M	Inner_1RB_Right	21.35	24.29	30	PASS
N78-3700-3800	30	70	DFT-256QAM	M	Outer_Full	21.45	24.39	30	PASS
N78-3700-3800	30	70	DFT-PI2BPSK	H	Inner_1RB_Left	26.06	29	30	PASS
N78-3700-3800	30	70	DFT-PI2BPSK	H	Inner_1RB_Right	26.16	29.1	30	PASS
N78-3700-3800	30	70	DFT-PI2BPSK	H	Outer_Full	25.52	28.46	30	PASS
N78-3700-3800	30	70	DFT-QPSK	H	Inner_1RB_Left	26.03	28.97	30	PASS
N78-3700-3800	30	70	DFT-QPSK	H	Inner_1RB_Right	26.2	29.14	30	PASS
N78-3700-3800	30	70	DFT-QPSK	H	Outer_Full	25.01	27.95	30	PASS
N78-3700-3800	30	70	DFT-16QAM	H	Inner_1RB_Left	24.97	27.91	30	PASS
N78-3700-3800	30	70	DFT-16QAM	H	Inner_1RB_Right	25.14	28.08	30	PASS
N78-3700-3800	30	70	DFT-16QAM	H	Outer_Full	23.97	26.91	30	PASS
N78-3700-3800	30	70	DFT-64QAM	H	Inner_1RB_Left	23.48	26.42	30	PASS
N78-3700-3800	30	70	DFT-64QAM	H	Inner_1RB_Right	23.58	26.52	30	PASS
N78-3700-3800	30	70	DFT-64QAM	H	Outer_Full	23.45	26.39	30	PASS
N78-3700-3800	30	70	DFT-256QAM	H	Inner_1RB_Left	21.45	24.39	30	PASS
N78-3700-3800	30	70	DFT-256QAM	H	Inner_1RB_Right	21.59	24.53	30	PASS
N78-3700-3800	30	70	DFT-256QAM	H	Outer_Full	21.53	24.47	30	PASS
N78-3700-3800	30	80	DFT-PI2BPSK	L	Inner_1RB_Left	25.86	28.8	30	PASS
N78-3700-3800	30	80	DFT-PI2BPSK	L	Inner_1RB_Right	25.9	28.84	30	PASS
N78-3700-3800	30	80	DFT-PI2BPSK	L	Outer_Full	25.52	28.46	30	PASS
N78-3700-3800	30	80	DFT-QPSK	L	Inner_1RB_Left	25.88	28.82	30	PASS
N78-3700-3800	30	80	DFT-QPSK	L	Inner_1RB_Right	25.94	28.88	30	PASS
N78-3700-3800	30	80	DFT-QPSK	L	Outer_Full	24.99	27.93	30	PASS
N78-3700-3800	30	80	DFT-16QAM	L	Inner_1RB_Left	24.77	27.71	30	PASS
N78-3700-3800	30	80	DFT-16QAM	L	Inner_1RB_Right	25.01	27.95	30	PASS
N78-3700-3800	30	80	DFT-16QAM	L	Outer_Full	24.01	26.95	30	PASS



Unless otherwise agreed in writing, this document is issued by the Company subject to its General Conditions of Service printed overleaf, available on request or accessible at <http://www.sgs.com/en/Terms-and-Conditions.aspx> and, for electronic format documents, subject to Terms and Conditions for Electronic Documents at <http://www.sgs.com/en/Terms-and-Conditions/Terms-e-Documents.aspx>. Attention is drawn to the limitation of liability, indemnification and jurisdiction issues defined therein. Any holder of this document is advised that information contained hereon reflects the Company's findings at the time of its intervention only and within the limits of Client's instructions, if any. The Company's sole responsibility is to its Client and this document does not exonerate parties to a transaction from exercising all their rights and obligations under the transaction documents. This document cannot be reproduced except in full, without prior written approval of the Company. Any unauthorized alteration, forgery or falsification of the content or appearance of this document is unlawful and offenders may be prosecuted to the fullest extent of the law. Unless otherwise stated the results shown in this test report refer only to the sample(s) tested and such sample(s) are retained for 30 days only.

Attention: To check the authenticity of testing/inspection report & certificate, please contact us at telephone: (86-755) 8307 1443, or email: [CN.Doccheck@sgs.com](mailto:CN.Doccheck@sgs.com)

South of No. 6 Plant, No. 1, Pansheng Road, Suzhou Industrial Park, Suzhou Area, China (Jiangsu) Pilot Free Trade Zone 215000  
 中国·苏州·中国(江苏)自由贸易试验区苏州片区苏州工业园区海胜路1号的6号厂房南楼 邮编: 215000

t (86-512) 62992980 www.sgs.com.cn  
 t (86-512) 62992980 sgs.china@sgs.com



Report No.: SEWM2306000190RG02

Rev.: 01

Page: 13 of 155

N78-3700-3800	30	80	DFT-64QAM	L	Inner_1RB_Left	23.34	26.28	30	PASS
N78-3700-3800	30	80	DFT-64QAM	L	Inner_1RB_Right	23.27	26.21	30	PASS
N78-3700-3800	30	80	DFT-64QAM	L	Outer_Full	23.52	26.46	30	PASS
N78-3700-3800	30	80	DFT-256QAM	L	Inner_1RB_Left	21.37	24.31	30	PASS
N78-3700-3800	30	80	DFT-256QAM	L	Inner_1RB_Right	21.35	24.29	30	PASS
N78-3700-3800	30	80	DFT-256QAM	L	Outer_Full	21.46	24.4	30	PASS
N78-3700-3800	30	80	DFT-PI2BPSK	M	Inner_1RB_Left	25.97	28.91	30	PASS
N78-3700-3800	30	80	DFT-PI2BPSK	M	Inner_1RB_Right	25.94	28.88	30	PASS
N78-3700-3800	30	80	DFT-PI2BPSK	M	Outer_Full	25.43	28.37	30	PASS
N78-3700-3800	30	80	DFT-QPSK	M	Inner_1RB_Left	26	28.94	30	PASS
N78-3700-3800	30	80	DFT-QPSK	M	Inner_1RB_Right	25.99	28.93	30	PASS
N78-3700-3800	30	80	DFT-QPSK	M	Outer_Full	24.93	27.87	30	PASS
N78-3700-3800	30	80	DFT-16QAM	M	Inner_1RB_Left	24.83	27.77	30	PASS
N78-3700-3800	30	80	DFT-16QAM	M	Inner_1RB_Right	24.8	27.74	30	PASS
N78-3700-3800	30	80	DFT-16QAM	M	Outer_Full	23.93	26.87	30	PASS
N78-3700-3800	30	80	DFT-64QAM	M	Inner_1RB_Left	23.44	26.38	30	PASS
N78-3700-3800	30	80	DFT-64QAM	M	Inner_1RB_Right	23.4	26.34	30	PASS
N78-3700-3800	30	80	DFT-64QAM	M	Outer_Full	23.43	26.37	30	PASS
N78-3700-3800	30	80	DFT-256QAM	M	Inner_1RB_Left	21.28	24.22	30	PASS
N78-3700-3800	30	80	DFT-256QAM	M	Inner_1RB_Right	21.41	24.35	30	PASS
N78-3700-3800	30	80	DFT-256QAM	M	Outer_Full	21.47	24.41	30	PASS
N78-3700-3800	30	80	DFT-PI2BPSK	H	Inner_1RB_Left	25.95	28.89	30	PASS
N78-3700-3800	30	80	DFT-PI2BPSK	H	Inner_1RB_Right	26.15	29.09	30	PASS
N78-3700-3800	30	80	DFT-PI2BPSK	H	Outer_Full	25.53	28.47	30	PASS
N78-3700-3800	30	80	DFT-QPSK	H	Inner_1RB_Left	26.09	29.03	30	PASS
N78-3700-3800	30	80	DFT-QPSK	H	Inner_1RB_Right	26.14	29.08	30	PASS
N78-3700-3800	30	80	DFT-QPSK	H	Outer_Full	25	27.94	30	PASS
N78-3700-3800	30	80	DFT-16QAM	H	Inner_1RB_Left	24.9	27.84	30	PASS
N78-3700-3800	30	80	DFT-16QAM	H	Inner_1RB_Right	25.09	28.03	30	PASS
N78-3700-3800	30	80	DFT-16QAM	H	Outer_Full	24.02	26.96	30	PASS
N78-3700-3800	30	80	DFT-64QAM	H	Inner_1RB_Left	23.39	26.33	30	PASS
N78-3700-3800	30	80	DFT-64QAM	H	Inner_1RB_Right	23.58	26.52	30	PASS
N78-3700-3800	30	80	DFT-64QAM	H	Outer_Full	23.51	26.45	30	PASS
N78-3700-3800	30	80	DFT-256QAM	H	Inner_1RB_Left	21.58	24.52	30	PASS



Unless otherwise agreed in writing, this document is issued by the Company subject to its General Conditions of Service printed overleaf, available on request or accessible at <http://www.sgs.com/en/Terms-and-Conditions.aspx> and, for electronic format documents, subject to Terms and Conditions for Electronic Documents at <http://www.sgs.com/en/Terms-and-Conditions/Terms-e-Documents.aspx>. Attention is drawn to the limitation of liability, indemnification and jurisdiction issues defined therein. Any holder of this document is advised that information contained hereon reflects the Company's findings at the time of its intervention only and within the limits of Client's instructions, if any. The Company's sole responsibility is to its Client and this document does not exonerate parties to a transaction from exercising all their rights and obligations under the transaction documents. This document cannot be reproduced except in full, without prior written approval of the Company. Any unauthorized alteration, forgery or falsification of the content or appearance of this document is unlawful and offenders may be prosecuted to the fullest extent of the law. Unless otherwise stated the results shown in this test report refer only to the sample(s) tested and such sample(s) are retained for 30 days only.

Attention: To check the authenticity of testing/inspection report & certificate, please contact us at telephone: (86-755) 8307 1443, or email: [CN.Doccheck@sgs.com](mailto:CN.Doccheck@sgs.com)

South of No. 6 Plant, No. 1, Pansheng Road, Suzhou Industrial Park, Suzhou Area, China (Jiangsu) Pilot Free Trade Zone 215000  
 中国·苏州·中国(江苏)自由贸易试验区苏州片区苏州工业园区海胜路1号的6号厂房南楼 邮编: 215000

t (86-512) 62992980 www.sgs.com.cn  
 t (86-512) 62992980 sgs.china@sgs.com



Report No.: SEWM2306000190RG02

Rev.: 01

Page: 14 of 155

N78-3700-3800	30	80	DFT-256QAM	H	Inner_1RB_Right	21.61	24.55	30	PASS
N78-3700-3800	30	80	DFT-256QAM	H	Outer_Full	21.52	24.46	30	PASS
N78-3700-3800	30	90	DFT-PI2BPSK	L	Inner_1RB_Left	25.89	28.83	30	PASS
N78-3700-3800	30	90	DFT-PI2BPSK	L	Inner_1RB_Right	26.09	29.03	30	PASS
N78-3700-3800	30	90	DFT-PI2BPSK	L	Outer_Full	25.5	28.44	30	PASS
N78-3700-3800	30	90	DFT-QPSK	L	Inner_1RB_Left	25.91	28.85	30	PASS
N78-3700-3800	30	90	DFT-QPSK	L	Inner_1RB_Right	26.07	29.01	30	PASS
N78-3700-3800	30	90	DFT-QPSK	L	Outer_Full	24.99	27.93	30	PASS
N78-3700-3800	30	90	DFT-16QAM	L	Inner_1RB_Left	24.89	27.83	30	PASS
N78-3700-3800	30	90	DFT-16QAM	L	Inner_1RB_Right	25	27.94	30	PASS
N78-3700-3800	30	90	DFT-16QAM	L	Outer_Full	23.98	26.92	30	PASS
N78-3700-3800	30	90	DFT-64QAM	L	Inner_1RB_Left	23.27	26.21	30	PASS
N78-3700-3800	30	90	DFT-64QAM	L	Inner_1RB_Right	23.48	26.42	30	PASS
N78-3700-3800	30	90	DFT-64QAM	L	Outer_Full	23.51	26.45	30	PASS
N78-3700-3800	30	90	DFT-256QAM	L	Inner_1RB_Left	21.31	24.25	30	PASS
N78-3700-3800	30	90	DFT-256QAM	L	Inner_1RB_Right	21.52	24.46	30	PASS
N78-3700-3800	30	90	DFT-256QAM	L	Outer_Full	21.5	24.44	30	PASS
N78-3700-3800	30	90	DFT-PI2BPSK	M	Inner_1RB_Left	25.91	28.85	30	PASS
N78-3700-3800	30	90	DFT-PI2BPSK	M	Inner_1RB_Right	26.13	29.07	30	PASS
N78-3700-3800	30	90	DFT-PI2BPSK	M	Outer_Full	25.48	28.42	30	PASS
N78-3700-3800	30	90	DFT-QPSK	M	Inner_1RB_Left	25.9	28.84	30	PASS
N78-3700-3800	30	90	DFT-QPSK	M	Inner_1RB_Right	26.12	29.06	30	PASS
N78-3700-3800	30	90	DFT-QPSK	M	Outer_Full	24.97	27.91	30	PASS
N78-3700-3800	30	90	DFT-16QAM	M	Inner_1RB_Left	24.88	27.82	30	PASS
N78-3700-3800	30	90	DFT-16QAM	M	Inner_1RB_Right	25.17	28.11	30	PASS
N78-3700-3800	30	90	DFT-16QAM	M	Outer_Full	23.99	26.93	30	PASS
N78-3700-3800	30	90	DFT-64QAM	M	Inner_1RB_Left	23.32	26.26	30	PASS
N78-3700-3800	30	90	DFT-64QAM	M	Inner_1RB_Right	23.52	26.46	30	PASS
N78-3700-3800	30	90	DFT-64QAM	M	Outer_Full	23.48	26.42	30	PASS
N78-3700-3800	30	90	DFT-256QAM	M	Inner_1RB_Left	21.24	24.18	30	PASS
N78-3700-3800	30	90	DFT-256QAM	M	Inner_1RB_Right	21.66	24.6	30	PASS
N78-3700-3800	30	90	DFT-256QAM	M	Outer_Full	21.45	24.39	30	PASS
N78-3700-3800	30	90	DFT-PI2BPSK	H	Inner_1RB_Left	25.95	28.89	30	PASS
N78-3700-3800	30	90	DFT-PI2BPSK	H	Inner_1RB_Right	26.18	29.12	30	PASS



Unless otherwise agreed in writing, this document is issued by the Company subject to its General Conditions of Service printed overleaf, available on request or accessible at <http://www.sgs.com/en/Terms-and-Conditions.aspx> and, for electronic format documents, subject to Terms and Conditions for Electronic Documents at <http://www.sgs.com/en/Terms-and-Conditions/Terms-e-Document.aspx>. Attention is drawn to the limitation of liability, indemnification and jurisdiction issues defined therein. Any holder of this document is advised that information contained hereon reflects the Company's findings at the time of its intervention only and within the limits of Client's instructions, if any. The Company's sole responsibility is to its Client and this document does not exonerate parties to a transaction from exercising all their rights and obligations under the transaction documents. This document cannot be reproduced except in full, without prior written approval of the Company. Any unauthorized alteration, forgery or falsification of the content or appearance of this document is unlawful and offenders may be prosecuted to the fullest extent of the law. Unless otherwise stated the results shown in this test report refer only to the sample(s) tested and such sample(s) are retained for 30 days only.

Attention: To check the authenticity of testing/inspection report & certificate, please contact us at telephone: (86-755) 8307 1443, or email: [CN.Doccheck@sgs.com](mailto:CN.Doccheck@sgs.com)

South of No. 6 Plant, No. 1, Pansheng Road, Suzhou Industrial Park, Suzhou Area, China (Jiangsu) Pilot Free Trade Zone 215000  
 中国·苏州·中国(江苏)自由贸易试验区苏州片区苏州工业园区海胜路1号的6号厂房南楼 邮编: 215000

t (86-512) 62992980 www.sgs.com.cn  
 t (86-512) 62992980 sgs.china@sgs.com



Report No.: SEWM2306000190RG02

Rev.: 01

Page: 15 of 155

N78-3700-3800	30	90	DFT-PI2BPSK	H	Outer_Full	25.42	28.36	30	PASS
N78-3700-3800	30	90	DFT-QPSK	H	Inner_1RB_Left	25.94	28.88	30	PASS
N78-3700-3800	30	90	DFT-QPSK	H	Inner_1RB_Right	26.18	29.12	30	PASS
N78-3700-3800	30	90	DFT-QPSK	H	Outer_Full	24.89	27.83	30	PASS
N78-3700-3800	30	90	DFT-16QAM	H	Inner_1RB_Left	24.79	27.73	30	PASS
N78-3700-3800	30	90	DFT-16QAM	H	Inner_1RB_Right	25.18	28.12	30	PASS
N78-3700-3800	30	90	DFT-16QAM	H	Outer_Full	23.92	26.86	30	PASS
N78-3700-3800	30	90	DFT-64QAM	H	Inner_1RB_Left	23.29	26.23	30	PASS
N78-3700-3800	30	90	DFT-64QAM	H	Inner_1RB_Right	23.67	26.61	30	PASS
N78-3700-3800	30	90	DFT-64QAM	H	Outer_Full	23.4	26.34	30	PASS
N78-3700-3800	30	90	DFT-256QAM	H	Inner_1RB_Left	21.46	24.4	30	PASS
N78-3700-3800	30	90	DFT-256QAM	H	Inner_1RB_Right	21.71	24.65	30	PASS
N78-3700-3800	30	90	DFT-256QAM	H	Outer_Full	21.36	24.3	30	PASS
N78-3700-3800	30	100	DFT-PI2BPSK	L	Inner_1RB_Left	25.82	28.76	30	PASS
N78-3700-3800	30	100	DFT-PI2BPSK	L	Inner_1RB_Right	26.25	29.19	30	PASS
N78-3700-3800	30	100	DFT-PI2BPSK	L	Outer_Full	25.49	28.43	30	PASS
N78-3700-3800	30	100	DFT-QPSK	L	Inner_1RB_Left	25.85	28.79	30	PASS
N78-3700-3800	30	100	DFT-QPSK	L	Inner_1RB_Right	26.27	29.21	30	PASS
N78-3700-3800	30	100	DFT-QPSK	L	Outer_Full	24.97	27.91	30	PASS
N78-3700-3800	30	100	DFT-16QAM	L	Inner_1RB_Left	24.82	27.76	30	PASS
N78-3700-3800	30	100	DFT-16QAM	L	Inner_1RB_Right	25.1	28.04	30	PASS
N78-3700-3800	30	100	DFT-16QAM	L	Outer_Full	23.96	26.9	30	PASS
N78-3700-3800	30	100	DFT-64QAM	L	Inner_1RB_Left	23.33	26.27	30	PASS
N78-3700-3800	30	100	DFT-64QAM	L	Inner_1RB_Right	23.7	26.64	30	PASS
N78-3700-3800	30	100	DFT-64QAM	L	Outer_Full	23.45	26.39	30	PASS
N78-3700-3800	30	100	DFT-256QAM	L	Inner_1RB_Left	21.31	24.25	30	PASS
N78-3700-3800	30	100	DFT-256QAM	L	Inner_1RB_Right	21.75	24.69	30	PASS
N78-3700-3800	30	100	DFT-256QAM	L	Outer_Full	21.53	24.47	30	PASS
N78-3700-3800	30	100	DFT-PI2BPSK	M	Inner_1RB_Left	25.85	28.79	30	PASS
N78-3700-3800	30	100	DFT-PI2BPSK	M	Inner_1RB_Right	26.27	29.21	30	PASS
N78-3700-3800	30	100	DFT-PI2BPSK	M	Outer_Full	25.49	28.43	30	PASS
N78-3700-3800	30	100	DFT-QPSK	M	Inner_1RB_Left	25.84	28.78	30	PASS
N78-3700-3800	30	100	DFT-QPSK	M	Inner_1RB_Right	26.28	29.22	30	PASS
N78-3700-3800	30	100	DFT-QPSK	M	Outer_Full	24.95	27.89	30	PASS



Unless otherwise agreed in writing, this document is issued by the Company subject to its General Conditions of Service printed overleaf, available on request or accessible at <http://www.sgs.com/en/Terms-and-Conditions.aspx> and, for electronic format documents, subject to Terms and Conditions for Electronic Documents at <http://www.sgs.com/en/Terms-and-Conditions/Terms-e-Documents.aspx>. Attention is drawn to the limitation of liability, indemnification and jurisdiction issues defined therein. Any holder of this document is advised that information contained hereon reflects the Company's findings at the time of its intervention only and within the limits of Client's instructions, if any. The Company's sole responsibility is to its Client and this document does not exonerate parties to a transaction from exercising all their rights and obligations under the transaction documents. This document cannot be reproduced except in full, without prior written approval of the Company. Any unauthorized alteration, forgery or falsification of the content or appearance of this document is unlawful and offenders may be prosecuted to the fullest extent of the law. Unless otherwise stated the results shown in this test report refer only to the sample(s) tested and such sample(s) are retained for 30 days only.

Attention: To check the authenticity of testing/inspection report & certificate, please contact us at telephone: (86-755) 8307 1443, or email: [CN.Doccheck@sgs.com](mailto:CN.Doccheck@sgs.com)

South of No. 6 Plant, No. 1, Pansheng Road, Suzhou Industrial Park, Suzhou Area, China (Jiangsu) Pilot Free Trade Zone 215000  
 中国·苏州·中国(江苏)自由贸易试验区苏州片区苏州工业园区海胜路1号的6号厂房南楼 邮编: 215000

t (86-512) 62992980 www.sgs.com.cn  
 t (86-512) 62992980 sgs.china@sgs.com



Report No.: SEWM2306000190RG02

Rev.: 01

Page: 16 of 155

N78-3700-3800	30	100	DFT-16QAM	M	Inner_1RB_Left	24.83	27.77	30	PASS
N78-3700-3800	30	100	DFT-16QAM	M	Inner_1RB_Right	25.24	28.18	30	PASS
N78-3700-3800	30	100	DFT-16QAM	M	Outer_Full	24.03	26.97	30	PASS
N78-3700-3800	30	100	DFT-64QAM	M	Inner_1RB_Left	23.37	26.31	30	PASS
N78-3700-3800	30	100	DFT-64QAM	M	Inner_1RB_Right	23.73	26.67	30	PASS
N78-3700-3800	30	100	DFT-64QAM	M	Outer_Full	23.45	26.39	30	PASS
N78-3700-3800	30	100	DFT-256QAM	M	Inner_1RB_Left	21.41	24.35	30	PASS
N78-3700-3800	30	100	DFT-256QAM	M	Inner_1RB_Right	21.76	24.7	30	PASS
N78-3700-3800	30	100	DFT-256QAM	M	Outer_Full	21.49	24.43	30	PASS
N78-3700-3800	30	100	DFT-PI2BPSK	H	Inner_1RB_Left	25.83	28.77	30	PASS
N78-3700-3800	30	100	DFT-PI2BPSK	H	Inner_1RB_Right	26.27	29.21	30	PASS
N78-3700-3800	30	100	DFT-PI2BPSK	H	Outer_Full	25.49	28.43	30	PASS
N78-3700-3800	30	100	DFT-QPSK	H	Inner_1RB_Left	25.85	28.79	30	PASS
N78-3700-3800	30	100	DFT-QPSK	H	Inner_1RB_Right	26.28	29.22	30	PASS
N78-3700-3800	30	100	DFT-QPSK	H	Outer_Full	24.95	27.89	30	PASS
N78-3700-3800	30	100	DFT-16QAM	H	Inner_1RB_Left	24.82	27.76	30	PASS
N78-3700-3800	30	100	DFT-16QAM	H	Inner_1RB_Right	25.17	28.11	30	PASS
N78-3700-3800	30	100	DFT-16QAM	H	Outer_Full	23.98	26.92	30	PASS
N78-3700-3800	30	100	DFT-64QAM	H	Inner_1RB_Left	23.28	26.22	30	PASS
N78-3700-3800	30	100	DFT-64QAM	H	Inner_1RB_Right	23.81	26.75	30	PASS
N78-3700-3800	30	100	DFT-64QAM	H	Outer_Full	23.48	26.42	30	PASS
N78-3700-3800	30	100	DFT-256QAM	H	Inner_1RB_Left	21.35	24.29	30	PASS
N78-3700-3800	30	100	DFT-256QAM	H	Inner_1RB_Right	21.74	24.68	30	PASS
N78-3700-3800	30	100	DFT-256QAM	H	Outer_Full	21.42	24.36	30	PASS



Unless otherwise agreed in writing, this document is issued by the Company subject to its General Conditions of Service printed overleaf, available on request or accessible at <http://www.sgs.com/en/Terms-and-Conditions.aspx> and, for electronic format documents, subject to Terms and Conditions for Electronic Documents at <http://www.sgs.com/en/Terms-and-Conditions/Terms-e-Documents.aspx>. Attention is drawn to the limitation of liability, indemnification and jurisdiction issues defined therein. Any holder of this document is advised that information contained hereon reflects the Company's findings at the time of its intervention only and within the limits of Client's instructions, if any. The Company's sole responsibility is to its Client and this document does not exonerate parties to a transaction from exercising all their rights and obligations under the transaction documents. This document cannot be reproduced except in full, without prior written approval of the Company. Any unauthorized alteration, forgery or falsification of the content or appearance of this document is unlawful and offenders may be prosecuted to the fullest extent of the law. Unless otherwise stated the results shown in this test report refer only to the sample(s) tested and such sample(s) are retained for 30 days only.  
**Attention:** To check the authenticity of testing/inspection report & certificate, please contact us at telephone: (86-755) 8307 1443, or email: [CN.Doccheck@sgs.com](mailto:CN.Doccheck@sgs.com)

South of No. 6 Plant, No. 1, Pansheng Road, Suzhou Industrial Park, Suzhou Area, China (Jiangsu) Pilot Free Trade Zone 215000  
 中国·苏州·中国(江苏)自由贸易试验区苏州片区苏州工业园区海胜路1号的6号厂房南楼 邮编: 215000

t (86-512) 62992980 www.sgs.com.cn  
 t (86-512) 62992980 sgs.china@sgs.com





Report No.: SEWM2306000190RG02

Rev.: 01

Page: 17 of 155

Test Result for UL MIMO

Band	SCS	Bandwidth	Modulation	Channel	RB Config	Power Ant1	Power Ant2	Total Power	EIRP	Limit	Verdict
N78(3700-3800)	30	10	DFT-PI2BPSK	L	Inner_1RB_Left	23.30	23.43	26.18	29.12	30.00	PASS
N78(3700-3800)	30	10	DFT-PI2BPSK	L	Inner_1RB_Right	23.43	23.40	26.13	29.07	30.00	PASS
N78(3700-3800)	30	10	DFT-PI2BPSK	L	Outer_Full	15.52	22.33	22.95	25.89	30.00	PASS
N78(3700-3800)	30	10	DFT-QPSK	L	Inner_1RB_Left	23.21	23.64	26.24	29.18	30.00	PASS
N78(3700-3800)	30	10	DFT-QPSK	L	Inner_1RB_Right	23.55	23.58	26.40	29.34	30.00	PASS
N78(3700-3800)	30	10	DFT-QPSK	L	Outer_Full	22.04	22.18	24.92	27.86	30.00	PASS
N78(3700-3800)	30	10	DFT-16QAM	L	Inner_1RB_Left	22.45	23.19	25.65	28.59	30.00	PASS
N78(3700-3800)	30	10	DFT-16QAM	L	Inner_1RB_Right	23.72	23.64	26.49	29.43	30.00	PASS
N78(3700-3800)	30	10	DFT-16QAM	L	Outer_Full	22.11	22.35	25.04	27.98	30.00	PASS
N78(3700-3800)	30	10	DFT-64QAM	L	Inner_1RB_Left	15.61	21.52	22.31	25.25	30.00	PASS
N78(3700-3800)	30	10	DFT-64QAM	L	Inner_1RB_Right	22.34	22.03	25.00	27.94	30.00	PASS
N78(3700-3800)	30	10	DFT-64QAM	L	Outer_Full	21.40	21.52	24.27	27.21	30.00	PASS
N78(3700-3800)	30	10	DFT-256QAM	L	Inner_1RB_Left	18.26	18.26	21.07	24.01	30.00	PASS
N78(3700-3800)	30	10	DFT-256QAM	L	Inner_1RB_Right	18.72	18.52	21.43	24.37	30.00	PASS
N78(3700-3800)	30	10	DFT-256QAM	L	Outer_Full	18.79	18.71	21.56	24.50	30.00	PASS
N78(3700-3800)	30	10	DFT-PI2BPSK	M	Inner_1RB_Left	23.32	23.56	26.25	29.19	30.00	PASS
N78(3700-3800)	30	10	DFT-PI2BPSK	M	Inner_1RB_Right	23.21	23.60	26.22	29.16	30.00	PASS
N78(3700-3800)	30	10	DFT-PI2BPSK	M	Outer_Full	21.78	22.38	24.90	27.84	30.00	PASS
N78(3700-3800)	30	10	DFT-QPSK	M	Inner_1RB_Left	22.81	23.69	26.08	29.02	30.00	PASS
N78(3700-3800)	30	10	DFT-QPSK	M	Inner_1RB_Right	22.99	16.49	23.67	26.61	30.00	PASS
N78(3700-3800)	30	10	DFT-QPSK	M	Outer_Full	21.64	22.19	24.73	27.67	30.00	PASS
N78(3700-3800)	30	10	DFT-16QAM	M	Inner_1RB_Left	22.89	23.66	26.10	29.04	30.00	PASS
N78(3700-3800)	30	10	DFT-16QAM	M	Inner_1RB_Right	22.68	23.23	25.77	28.71	30.00	PASS
N78(3700-3800)	30	10	DFT-16QAM	M	Outer_Full	21.50	22.21	24.68	27.62	30.00	PASS
N78(3700-3800)	30	10	DFT-64QAM	M	Inner_1RB_Left	21.89	21.91	24.71	27.65	30.00	PASS
N78(3700-3800)	30	10	DFT-64QAM	M	Inner_1RB_Right	21.71	21.52	24.43	27.37	30.00	PASS
N78(3700-3800)	30	10	DFT-64QAM	M	Outer_Full	15.53	21.78	22.50	25.44	30.00	PASS
N78(3700-3800)	30	10	DFT-256QAM	M	Inner_1RB_Left	18.61	18.61	21.42	24.36	30.00	PASS
N78(3700-3800)	30	10	DFT-256QAM	M	Inner_1RB_Right	18.57	18.37	21.28	24.22	30.00	PASS
N78(3700-3800)	30	10	DFT-256QAM	M	Outer_Full	15.04	18.90	20.20	23.14	30.00	PASS
N78(3700-3800)	30	10	DFT-PI2BPSK	H	Inner_1RB_Left	23.22	23.37	26.04	28.98	30.00	PASS
N78(3700-3800)	30	10	DFT-PI2BPSK	H	Inner_1RB_Right	23.26	23.05	25.97	28.91	30.00	PASS
N78(3700-3800)	30	10	DFT-PI2BPSK	H	Outer_Full	22.44	22.46	25.26	28.20	30.00	PASS
N78(3700-3800)	30	10	DFT-QPSK	H	Inner_1RB_Left	23.31	23.20	26.11	29.05	30.00	PASS



Unless otherwise agreed in writing, this document is issued by the Company subject to its General Conditions of Service printed overleaf, available on request or accessible at <http://www.sgs.com/en/Terms-and-Conditions.aspx> and, for electronic format documents, subject to Terms and Conditions for Electronic Documents at <http://www.sgs.com/en/Terms-and-Conditions/Terms-e-Documents.aspx>. Attention is drawn to the limitation of liability, indemnification and jurisdiction issues defined therein. Any holder of this document is advised that information contained hereon reflects the Company's findings at the time of its intervention only and within the limits of Client's instructions, if any. The Company's sole responsibility is to its Client and this document does not exonerate parties to a transaction from exercising all their rights and obligations under the transaction documents. This document cannot be reproduced except in full, without prior written approval of the Company. Any unauthorized alteration, forgery or falsification of the content or appearance of this document is unlawful and offenders may be prosecuted to the fullest extent of the law. Unless otherwise stated the results shown in this test report refer only to the sample(s) tested and such sample(s) are retained for 30 days only.

Attention: To check the authenticity of testing/inspection report & certificate, please contact us at telephone: (86-755) 8307 1443, or email: [CN.Doccheck@sgs.com](mailto:CN.Doccheck@sgs.com)  
 South of No. 6 Plant, No. 1, Runsheng Road, Suzhou Industrial Park, Suzhou Area, China (Jiangsu) Pilot Free Trade Zone 215000 t (86-512) 62992980 www.sgs.com.cn  
 中国·苏州·中国(江苏)自由贸易试验区苏州片区苏州工业园区润胜路1号的6号厂房南楼 邮编: 215000 t (86-512) 62992980 sgs.china@sgs.com



Report No.: SEWM2306000190RG02

Rev.: 01

Page: 18 of 155

N78(3700-3800)	30	10	DFT-QPSK	H	Inner_1RB_Right	23.30	23.23	26.06	29.00	30.00	PASS
N78(3700-3800)	30	10	DFT-QPSK	H	Outer_Full	22.40	22.20	25.11	28.05	30.00	PASS
N78(3700-3800)	30	10	DFT-16QAM	H	Inner_1RB_Left	23.32	23.27	26.11	29.05	30.00	PASS
N78(3700-3800)	30	10	DFT-16QAM	H	Inner_1RB_Right	15.75	23.47	23.95	26.89	30.00	PASS
N78(3700-3800)	30	10	DFT-16QAM	H	Outer_Full	22.49	22.25	25.18	28.12	30.00	PASS
N78(3700-3800)	30	10	DFT-64QAM	H	Inner_1RB_Left	22.00	21.81	24.72	27.66	30.00	PASS
N78(3700-3800)	30	10	DFT-64QAM	H	Inner_1RB_Right	22.20	21.83	24.83	27.77	30.00	PASS
N78(3700-3800)	30	10	DFT-64QAM	H	Outer_Full	22.01	21.89	24.76	27.70	30.00	PASS
N78(3700-3800)	30	10	DFT-256QAM	H	Inner_1RB_Left	18.74	18.57	21.47	24.41	30.00	PASS
N78(3700-3800)	30	10	DFT-256QAM	H	Inner_1RB_Right	18.80	18.50	21.46	24.40	30.00	PASS
N78(3700-3800)	30	10	DFT-256QAM	H	Outer_Full	18.88	18.67	21.59	24.53	30.00	PASS
N78(3700-3800)	30	15	DFT-PI2BPSK	L	Inner_1RB_Left	23.44	23.57	26.32	29.26	30.00	PASS
N78(3700-3800)	30	15	DFT-PI2BPSK	L	Inner_1RB_Right	23.81	23.34	26.39	29.33	30.00	PASS
N78(3700-3800)	30	15	DFT-PI2BPSK	L	Outer_Full	15.52	22.33	22.95	25.89	30.00	PASS
N78(3700-3800)	30	15	DFT-QPSK	L	Inner_1RB_Left	23.19	23.62	26.22	29.16	30.00	PASS
N78(3700-3800)	30	15	DFT-QPSK	L	Inner_1RB_Right	23.92	23.45	26.50	29.44	30.00	PASS
N78(3700-3800)	30	15	DFT-QPSK	L	Outer_Full	22.14	22.28	25.02	27.96	30.00	PASS
N78(3700-3800)	30	15	DFT-16QAM	L	Inner_1RB_Left	22.53	23.27	25.73	28.67	30.00	PASS
N78(3700-3800)	30	15	DFT-16QAM	L	Inner_1RB_Right	23.62	23.54	26.39	29.33	30.00	PASS
N78(3700-3800)	30	15	DFT-16QAM	L	Outer_Full	22.14	22.38	25.07	28.01	30.00	PASS
N78(3700-3800)	30	15	DFT-64QAM	L	Inner_1RB_Left	15.49	21.40	22.19	25.13	30.00	PASS
N78(3700-3800)	30	15	DFT-64QAM	L	Inner_1RB_Right	22.22	21.91	24.88	27.82	30.00	PASS
N78(3700-3800)	30	15	DFT-64QAM	L	Outer_Full	21.70	21.82	24.57	27.51	30.00	PASS
N78(3700-3800)	30	15	DFT-256QAM	L	Inner_1RB_Left	18.30	18.30	21.11	24.05	30.00	PASS
N78(3700-3800)	30	15	DFT-256QAM	L	Inner_1RB_Right	18.62	18.42	21.33	24.27	30.00	PASS
N78(3700-3800)	30	15	DFT-256QAM	L	Outer_Full	18.97	18.89	21.74	24.68	30.00	PASS
N78(3700-3800)	30	15	DFT-PI2BPSK	M	Inner_1RB_Left	23.04	23.28	25.97	28.91	30.00	PASS
N78(3700-3800)	30	15	DFT-PI2BPSK	M	Inner_1RB_Right	23.05	23.44	26.06	29.00	30.00	PASS
N78(3700-3800)	30	15	DFT-PI2BPSK	M	Outer_Full	21.60	22.20	24.72	27.66	30.00	PASS
N78(3700-3800)	30	15	DFT-QPSK	M	Inner_1RB_Left	22.75	23.63	26.02	28.96	30.00	PASS
N78(3700-3800)	30	15	DFT-QPSK	M	Inner_1RB_Right	23.17	16.67	23.85	26.79	30.00	PASS
N78(3700-3800)	30	15	DFT-QPSK	M	Outer_Full	21.60	22.15	24.69	27.63	30.00	PASS
N78(3700-3800)	30	15	DFT-16QAM	M	Inner_1RB_Left	22.69	23.46	25.90	28.84	30.00	PASS
N78(3700-3800)	30	15	DFT-16QAM	M	Inner_1RB_Right	22.60	23.15	25.69	28.63	30.00	PASS
N78(3700-3800)	30	15	DFT-16QAM	M	Outer_Full	21.70	22.41	24.88	27.82	30.00	PASS
N78(3700-3800)	30	15	DFT-64QAM	M	Inner_1RB_Left	21.94	21.96	24.76	27.70	30.00	PASS
N78(3700-3800)	30	15	DFT-64QAM	M	Inner_1RB_Right	21.76	21.57	24.48	27.42	30.00	PASS



Unless otherwise agreed in writing, this document is issued by the Company subject to its General Conditions of Service printed overleaf, available on request or accessible at <http://www.sgs.com/en/Terms-and-Conditions.aspx> and, for electronic format documents, subject to Terms and Conditions for Electronic Documents at <http://www.sgs.com/en/Terms-and-Conditions/Terms-e-Documents.aspx>. Attention is drawn to the limitation of liability, indemnification and jurisdiction issues defined therein. Any holder of this document is advised that information contained hereon reflects the Company's findings at the time of its intervention only and within the limits of Client's instructions, if any. The Company's sole responsibility is to its Client and this document does not exonerate parties to a transaction from exercising all their rights and obligations under the transaction documents. This document cannot be reproduced except in full, without prior written approval of the Company. Any unauthorized alteration, forgery or falsification of the content or appearance of this document is unlawful and offenders may be prosecuted to the fullest extent of the law. Unless otherwise stated the results shown in this test report refer only to the sample(s) tested and such sample(s) are retained for 30 days only.

Attention: To check the authenticity of testing/inspection report & certificate, please contact us at telephone: (86-755) 8307 1443, or email: [CN.Doccheck@sgs.com](mailto:CN.Doccheck@sgs.com)

South of No. 6 Plant, No. 1, Runsheng Road, Suzhou Industrial Park, Suzhou Area, China (Jiangsu) Pilot Free Trade Zone 215000 t (86-512) 62992980 www.sgs.com.cn  
 中国·苏州·中国(江苏)自由贸易试验区苏州片区工业园区润胜路1号的6号厂房南楼 邮编: 215000 t (86-512) 62992980 sgs.china@sgs.com



Report No.: SEWM2306000190RG02

Rev.: 01

Page: 19 of 155

Table with 12 columns: Item ID, Sample No., Lot No., Test Method, Modulation, Port, and 6 test results (15.30, 21.55, 22.27, 25.21, 30.00) and PASS status.



Unless otherwise agreed in writing, this document is issued by the Company subject to its General Conditions of Service printed overleaf, available on request or accessible at http://www.sgs.com/en/Terms-and-Conditions.aspx and, for electronic format documents, subject to Terms and Conditions for Electronic Documents at http://www.sgs.com/en/Terms-and-Conditions/Terms-e-Documents.aspx. Attention is drawn to the limitation of liability, indemnification and jurisdiction issues defined therein. Any holder of this document is advised that information contained hereon reflects the Company's findings at the time of its intervention only and within the limits of Client's instructions, if any. The Company's sole responsibility is to its Client and this document does not exonerate parties to a transaction from exercising all their rights and obligations under the transaction documents. This document cannot be reproduced except in full, without prior written approval of the Company. Any unauthorized alteration, forgery or falsification of the content or appearance of this document is unlawful and offenders may be prosecuted to the fullest extent of the law. Unless otherwise stated the results shown in this test report refer only to the sample(s) tested and such sample(s) are retained for 30 days only. Attention: To check the authenticity of testing/inspection report & certificate, please contact us at telephone: (86-755) 8307 1443, or email: CN.Doccheck@sgs.com

South of No. 6 Plant, No. 1, Runsheng Road, Suzhou Industrial Park, Suzhou Area, China (Jiangsu) Pilot Free Trade Zone 215000 t (86-512) 62992980 www.sgs.com.cn  
中国·苏州·中国(江苏)自由贸易试验区苏州片区苏州工业园区润胜路1号的6号厂房南楼 邮编: 215000 t (86-512) 62992980 sgs.china@sgs.com



Report No.: SEWM2306000190RG02

Rev.: 01

Page: 20 of 155

N78(3700-3800)	30	20	DFT-QPSK	M	Inner_1RB_Left	22.80	23.68	26.07	29.01	30.00	PASS
N78(3700-3800)	30	20	DFT-QPSK	M	Inner_1RB_Right	22.82	16.32	23.50	26.44	30.00	PASS
N78(3700-3800)	30	20	DFT-QPSK	M	Outer_Full	21.63	22.18	24.72	27.66	30.00	PASS
N78(3700-3800)	30	20	DFT-16QAM	M	Inner_1RB_Left	22.67	23.44	25.88	28.82	30.00	PASS
N78(3700-3800)	30	20	DFT-16QAM	M	Inner_1RB_Right	22.93	23.48	26.02	28.96	30.00	PASS
N78(3700-3800)	30	20	DFT-16QAM	M	Outer_Full	21.65	22.36	24.83	27.77	30.00	PASS
N78(3700-3800)	30	20	DFT-64QAM	M	Inner_1RB_Left	21.84	21.86	24.66	27.60	30.00	PASS
N78(3700-3800)	30	20	DFT-64QAM	M	Inner_1RB_Right	21.74	21.55	24.46	27.40	30.00	PASS
N78(3700-3800)	30	20	DFT-64QAM	M	Outer_Full	15.37	21.62	22.34	25.28	30.00	PASS
N78(3700-3800)	30	20	DFT-256QAM	M	Inner_1RB_Left	18.55	18.55	21.36	24.30	30.00	PASS
N78(3700-3800)	30	20	DFT-256QAM	M	Inner_1RB_Right	18.74	18.54	21.45	24.39	30.00	PASS
N78(3700-3800)	30	20	DFT-256QAM	M	Outer_Full	14.83	18.69	19.99	22.93	30.00	PASS
N78(3700-3800)	30	20	DFT-PI2BPSK	H	Inner_1RB_Left	23.74	23.39	26.38	29.32	30.00	PASS
N78(3700-3800)	30	20	DFT-PI2BPSK	H	Inner_1RB_Right	23.84	23.79	26.63	29.57	30.00	PASS
N78(3700-3800)	30	20	DFT-PI2BPSK	H	Outer_Full	22.54	22.56	25.36	28.30	30.00	PASS
N78(3700-3800)	30	20	DFT-QPSK	H	Inner_1RB_Left	23.57	23.43	26.31	29.25	30.00	PASS
N78(3700-3800)	30	20	DFT-QPSK	H	Inner_1RB_Right	23.68	23.61	26.46	29.40	30.00	PASS
N78(3700-3800)	30	20	DFT-QPSK	H	Outer_Full	22.42	22.22	25.13	28.07	30.00	PASS
N78(3700-3800)	30	20	DFT-16QAM	H	Inner_1RB_Left	23.61	23.56	26.40	29.34	30.00	PASS
N78(3700-3800)	30	20	DFT-16QAM	H	Inner_1RB_Right	15.72	23.44	23.92	26.86	30.00	PASS
N78(3700-3800)	30	20	DFT-16QAM	H	Outer_Full	22.42	22.18	25.11	28.05	30.00	PASS
N78(3700-3800)	30	20	DFT-64QAM	H	Inner_1RB_Left	22.07	21.88	24.79	27.73	30.00	PASS
N78(3700-3800)	30	20	DFT-64QAM	H	Inner_1RB_Right	22.01	21.64	24.64	27.58	30.00	PASS
N78(3700-3800)	30	20	DFT-64QAM	H	Outer_Full	21.83	21.71	24.58	27.52	30.00	PASS
N78(3700-3800)	30	20	DFT-256QAM	H	Inner_1RB_Left	18.73	18.56	21.46	24.40	30.00	PASS
N78(3700-3800)	30	20	DFT-256QAM	H	Inner_1RB_Right	18.91	18.61	21.57	24.51	30.00	PASS
N78(3700-3800)	30	20	DFT-256QAM	H	Outer_Full	18.95	18.74	21.66	24.60	30.00	PASS
N78(3700-3800)	30	30	DFT-PI2BPSK	L	Inner_1RB_Left	23.39	23.52	26.27	29.21	30.00	PASS
N78(3700-3800)	30	30	DFT-PI2BPSK	L	Inner_1RB_Right	24.08	23.61	26.66	29.60	30.00	PASS
N78(3700-3800)	30	30	DFT-PI2BPSK	L	Outer_Full	15.71	22.52	23.14	26.08	30.00	PASS
N78(3700-3800)	30	30	DFT-QPSK	L	Inner_1RB_Left	23.01	23.44	26.04	28.98	30.00	PASS
N78(3700-3800)	30	30	DFT-QPSK	L	Inner_1RB_Right	23.21	23.30	26.26	29.20	30.00	PASS
N78(3700-3800)	30	30	DFT-QPSK	L	Outer_Full	22.23	22.37	25.11	28.05	30.00	PASS
N78(3700-3800)	30	30	DFT-16QAM	L	Inner_1RB_Left	22.80	23.54	26.00	28.94	30.00	PASS
N78(3700-3800)	30	30	DFT-16QAM	L	Inner_1RB_Right	23.61	23.53	26.38	29.32	30.00	PASS
N78(3700-3800)	30	30	DFT-16QAM	L	Outer_Full	21.95	22.19	24.88	27.82	30.00	PASS
N78(3700-3800)	30	30	DFT-64QAM	L	Inner_1RB_Left	15.39	21.30	22.09	25.03	30.00	PASS



Unless otherwise agreed in writing, this document is issued by the Company subject to its General Conditions of Service printed overleaf, available on request or accessible at <http://www.sgs.com/en/Terms-and-Conditions.aspx> and, for electronic format documents, subject to Terms and Conditions for Electronic Documents at <http://www.sgs.com/en/Terms-and-Conditions/Terms-e-Documents.aspx>. Attention is drawn to the limitation of liability, indemnification and jurisdiction issues defined therein. Any holder of this document is advised that information contained hereon reflects the Company's findings at the time of its intervention only and within the limits of Client's instructions, if any. The Company's sole responsibility is to its Client and this document does not exonerate parties to a transaction from exercising all their rights and obligations under the transaction documents. This document cannot be reproduced except in full, without prior written approval of the Company. Any unauthorized alteration, forgery or falsification of the content or appearance of this document is unlawful and offenders may be prosecuted to the fullest extent of the law. Unless otherwise stated the results shown in this test report refer only to the sample(s) tested and such sample(s) are retained for 30 days only.

Attention: To check the authenticity of testing/inspection report & certificate, please contact us at telephone: (86-755) 8307 1443, or email: [CN.Doccheck@sgs.com](mailto:CN.Doccheck@sgs.com)

South of No. 6 Plant, No. 1, Runsheng Road, Suzhou Industrial Park, Suzhou Area, China (Jiangsu) Pilot Free Trade Zone 215000 t (86-512) 62992980 www.sgs.com.cn  
 中国·苏州·中国(江苏)自由贸易试验区苏州片区苏州工业园区润胜路1号的6号厂房南楼 邮编: 215000 t (86-512) 62992980 sgs.china@sgs.com



Report No.: SEWM2306000190RG02

Rev.: 01

Page: 21 of 155

N78(3700-3800)	30	30	DFT-64QAM	L	Inner_1RB_Right	22.24	21.93	24.90	27.84	30.00	PASS
N78(3700-3800)	30	30	DFT-64QAM	L	Outer_Full	21.73	21.85	24.60	27.54	30.00	PASS
N78(3700-3800)	30	30	DFT-256QAM	L	Inner_1RB_Left	18.38	18.38	21.19	24.13	30.00	PASS
N78(3700-3800)	30	30	DFT-256QAM	L	Inner_1RB_Right	18.88	18.68	21.59	24.53	30.00	PASS
N78(3700-3800)	30	30	DFT-256QAM	L	Outer_Full	18.77	18.69	21.54	24.48	30.00	PASS
N78(3700-3800)	30	30	DFT-PI2BPSK	M	Inner_1RB_Left	23.07	23.31	26.00	28.94	30.00	PASS
N78(3700-3800)	30	30	DFT-PI2BPSK	M	Inner_1RB_Right	23.16	23.55	26.17	29.11	30.00	PASS
N78(3700-3800)	30	30	DFT-PI2BPSK	M	Outer_Full	21.51	22.11	24.63	27.57	30.00	PASS
N78(3700-3800)	30	30	DFT-QPSK	M	Inner_1RB_Left	22.84	23.72	26.11	29.05	30.00	PASS
N78(3700-3800)	30	30	DFT-QPSK	M	Inner_1RB_Right	22.96	16.46	23.64	26.58	30.00	PASS
N78(3700-3800)	30	30	DFT-QPSK	M	Outer_Full	21.67	22.22	24.76	27.70	30.00	PASS
N78(3700-3800)	30	30	DFT-16QAM	M	Inner_1RB_Left	22.66	23.43	25.87	28.81	30.00	PASS
N78(3700-3800)	30	30	DFT-16QAM	M	Inner_1RB_Right	22.77	23.32	25.86	28.80	30.00	PASS
N78(3700-3800)	30	30	DFT-16QAM	M	Outer_Full	21.50	22.21	24.68	27.62	30.00	PASS
N78(3700-3800)	30	30	DFT-64QAM	M	Inner_1RB_Left	21.92	21.94	24.74	27.68	30.00	PASS
N78(3700-3800)	30	30	DFT-64QAM	M	Inner_1RB_Right	21.70	21.51	24.42	27.36	30.00	PASS
N78(3700-3800)	30	30	DFT-64QAM	M	Outer_Full	15.33	21.58	22.30	25.24	30.00	PASS
N78(3700-3800)	30	30	DFT-256QAM	M	Inner_1RB_Left	18.49	18.49	21.30	24.24	30.00	PASS
N78(3700-3800)	30	30	DFT-256QAM	M	Inner_1RB_Right	18.63	18.43	21.34	24.28	30.00	PASS
N78(3700-3800)	30	30	DFT-256QAM	M	Outer_Full	14.81	18.67	19.97	22.91	30.00	PASS
N78(3700-3800)	30	30	DFT-PI2BPSK	H	Inner_1RB_Left	22.94	23.35	26.10	29.04	30.00	PASS
N78(3700-3800)	30	30	DFT-PI2BPSK	H	Inner_1RB_Right	23.44	23.25	26.11	29.05	30.00	PASS
N78(3700-3800)	30	30	DFT-PI2BPSK	H	Outer_Full	22.55	22.57	25.37	28.31	30.00	PASS
N78(3700-3800)	30	30	DFT-QPSK	H	Inner_1RB_Left	23.25	23.07	26.09	29.03	30.00	PASS
N78(3700-3800)	30	30	DFT-QPSK	H	Inner_1RB_Right	23.40	23.14	26.19	29.13	30.00	PASS
N78(3700-3800)	30	30	DFT-QPSK	H	Outer_Full	22.43	22.23	25.14	28.08	30.00	PASS
N78(3700-3800)	30	30	DFT-16QAM	H	Inner_1RB_Left	23.65	23.60	26.44	29.38	30.00	PASS
N78(3700-3800)	30	30	DFT-16QAM	H	Inner_1RB_Right	15.80	23.52	24.00	26.94	30.00	PASS
N78(3700-3800)	30	30	DFT-16QAM	H	Outer_Full	22.52	22.28	25.21	28.15	30.00	PASS
N78(3700-3800)	30	30	DFT-64QAM	H	Inner_1RB_Left	22.00	21.81	24.72	27.66	30.00	PASS
N78(3700-3800)	30	30	DFT-64QAM	H	Inner_1RB_Right	22.22	21.85	24.85	27.79	30.00	PASS
N78(3700-3800)	30	30	DFT-64QAM	H	Outer_Full	21.93	21.81	24.68	27.62	30.00	PASS
N78(3700-3800)	30	30	DFT-256QAM	H	Inner_1RB_Left	18.63	18.46	21.36	24.30	30.00	PASS
N78(3700-3800)	30	30	DFT-256QAM	H	Inner_1RB_Right	18.80	18.50	21.46	24.40	30.00	PASS
N78(3700-3800)	30	30	DFT-256QAM	H	Outer_Full	19.13	18.92	21.84	24.78	30.00	PASS
N78(3700-3800)	30	40	DFT-PI2BPSK	L	Inner_1RB_Left	23.43	23.56	26.31	29.25	30.00	PASS
N78(3700-3800)	30	40	DFT-PI2BPSK	L	Inner_1RB_Right	23.75	23.28	26.33	29.27	30.00	PASS



Unless otherwise agreed in writing, this document is issued by the Company subject to its General Conditions of Service printed overleaf, available on request or accessible at <http://www.sgs.com/en/Terms-and-Conditions.aspx> and, for electronic format documents, subject to Terms and Conditions for Electronic Documents at <http://www.sgs.com/en/Terms-and-Conditions/Terms-e-Documents.aspx>. Attention is drawn to the limitation of liability, indemnification and jurisdiction issues defined therein. Any holder of this document is advised that information contained hereon reflects the Company's findings at the time of its intervention only and within the limits of Client's instructions, if any. The Company's sole responsibility is to its Client and this document does not exonerate parties to a transaction from exercising all their rights and obligations under the transaction documents. This document cannot be reproduced except in full, without prior written approval of the Company. Any unauthorized alteration, forgery or falsification of the content or appearance of this document is unlawful and offenders may be prosecuted to the fullest extent of the law. Unless otherwise stated the results shown in this test report refer only to the sample(s) tested and such sample(s) are retained for 30 days only.

Attention: To check the authenticity of testing/inspection report & certificate, please contact us at telephone: (86-755) 8307 1443, or email: [CN.Doccheck@sgs.com](mailto:CN.Doccheck@sgs.com)

South of No. 6 Plant, No. 1, Runsheng Road, Suzhou Industrial Park, Suzhou Area, China (Jiangsu) Pilot Free Trade Zone 215000 t (86-512) 62992980 www.sgs.com.cn  
 中国·苏州·中国(江苏)自由贸易试验区苏州片区苏州工业园区润胜路1号的6号厂房南楼 邮编: 215000 t (86-512) 62992980 sgs.china@sgs.com



Report No.: SEWM2306000190RG02

Rev.: 01

Page: 22 of 155

N78(3700-3800)	30	40	DFT-PI2BPSK	L	Outer_Full	15.64	22.45	23.07	26.01	30.00	PASS
N78(3700-3800)	30	40	DFT-QPSK	L	Inner_1RB_Left	23.06	23.49	26.09	29.03	30.00	PASS
N78(3700-3800)	30	40	DFT-QPSK	L	Inner_1RB_Right	23.44	23.25	25.73	28.67	30.00	PASS
N78(3700-3800)	30	40	DFT-QPSK	L	Outer_Full	21.96	22.10	24.84	27.78	30.00	PASS
N78(3700-3800)	30	40	DFT-16QAM	L	Inner_1RB_Left	22.83	23.57	26.03	28.97	30.00	PASS
N78(3700-3800)	30	40	DFT-16QAM	L	Inner_1RB_Right	23.75	23.67	26.52	29.46	30.00	PASS
N78(3700-3800)	30	40	DFT-16QAM	L	Outer_Full	22.02	22.26	24.95	27.89	30.00	PASS
N78(3700-3800)	30	40	DFT-64QAM	L	Inner_1RB_Left	15.78	21.69	22.48	25.42	30.00	PASS
N78(3700-3800)	30	40	DFT-64QAM	L	Inner_1RB_Right	22.32	22.01	24.98	27.92	30.00	PASS
N78(3700-3800)	30	40	DFT-64QAM	L	Outer_Full	21.52	21.64	24.39	27.33	30.00	PASS
N78(3700-3800)	30	40	DFT-256QAM	L	Inner_1RB_Left	18.27	18.27	21.08	24.02	30.00	PASS
N78(3700-3800)	30	40	DFT-256QAM	L	Inner_1RB_Right	18.66	18.46	21.37	24.31	30.00	PASS
N78(3700-3800)	30	40	DFT-256QAM	L	Outer_Full	18.70	18.62	21.47	24.41	30.00	PASS
N78(3700-3800)	30	40	DFT-PI2BPSK	M	Inner_1RB_Left	23.33	23.57	26.26	29.20	30.00	PASS
N78(3700-3800)	30	40	DFT-PI2BPSK	M	Inner_1RB_Right	23.21	23.60	26.22	29.16	30.00	PASS
N78(3700-3800)	30	40	DFT-PI2BPSK	M	Outer_Full	21.76	22.36	24.88	27.82	30.00	PASS
N78(3700-3800)	30	40	DFT-QPSK	M	Inner_1RB_Left	22.94	23.82	26.21	29.15	30.00	PASS
N78(3700-3800)	30	40	DFT-QPSK	M	Inner_1RB_Right	22.97	16.47	23.65	26.59	30.00	PASS
N78(3700-3800)	30	40	DFT-QPSK	M	Outer_Full	21.65	22.20	24.74	27.68	30.00	PASS
N78(3700-3800)	30	40	DFT-16QAM	M	Inner_1RB_Left	22.62	23.39	25.83	28.77	30.00	PASS
N78(3700-3800)	30	40	DFT-16QAM	M	Inner_1RB_Right	22.64	23.19	25.73	28.67	30.00	PASS
N78(3700-3800)	30	40	DFT-16QAM	M	Outer_Full	21.56	22.27	24.74	27.68	30.00	PASS
N78(3700-3800)	30	40	DFT-64QAM	M	Inner_1RB_Left	21.77	21.79	24.59	27.53	30.00	PASS
N78(3700-3800)	30	40	DFT-64QAM	M	Inner_1RB_Right	21.63	21.44	24.35	27.29	30.00	PASS
N78(3700-3800)	30	40	DFT-64QAM	M	Outer_Full	15.52	21.77	22.49	25.43	30.00	PASS
N78(3700-3800)	30	40	DFT-256QAM	M	Inner_1RB_Left	18.52	18.52	21.33	24.27	30.00	PASS
N78(3700-3800)	30	40	DFT-256QAM	M	Inner_1RB_Right	18.81	18.61	21.52	24.46	30.00	PASS
N78(3700-3800)	30	40	DFT-256QAM	M	Outer_Full	14.79	18.65	19.95	22.89	30.00	PASS
N78(3700-3800)	30	40	DFT-PI2BPSK	H	Inner_1RB_Left	23.42	23.49	26.33	29.27	30.00	PASS
N78(3700-3800)	30	40	DFT-PI2BPSK	H	Inner_1RB_Right	23.20	23.32	26.24	29.18	30.00	PASS
N78(3700-3800)	30	40	DFT-PI2BPSK	H	Outer_Full	22.48	22.50	25.30	28.24	30.00	PASS
N78(3700-3800)	30	40	DFT-QPSK	H	Inner_1RB_Left	23.76	23.62	26.50	29.44	30.00	PASS
N78(3700-3800)	30	40	DFT-QPSK	H	Inner_1RB_Right	23.82	23.75	26.60	29.54	30.00	PASS
N78(3700-3800)	30	40	DFT-QPSK	H	Outer_Full	22.44	22.24	25.15	28.09	30.00	PASS
N78(3700-3800)	30	40	DFT-16QAM	H	Inner_1RB_Left	23.72	23.67	26.51	29.45	30.00	PASS
N78(3700-3800)	30	40	DFT-16QAM	H	Inner_1RB_Right	15.62	23.34	23.82	26.76	30.00	PASS
N78(3700-3800)	30	40	DFT-16QAM	H	Outer_Full	22.38	22.14	25.07	28.01	30.00	PASS



Unless otherwise agreed in writing, this document is issued by the Company subject to its General Conditions of Service printed overleaf, available on request or accessible at <http://www.sgs.com/en/Terms-and-Conditions.aspx> and, for electronic format documents, subject to Terms and Conditions for Electronic Documents at <http://www.sgs.com/en/Terms-and-Conditions/Terms-e-Documents.aspx>. Attention is drawn to the limitation of liability, indemnification and jurisdiction issues defined therein. Any holder of this document is advised that information contained hereon reflects the Company's findings at the time of its intervention only and within the limits of Client's instructions, if any. The Company's sole responsibility is to its Client and this document does not exonerate parties to a transaction from exercising all their rights and obligations under the transaction documents. This document cannot be reproduced except in full, without prior written approval of the Company. Any unauthorized alteration, forgery or falsification of the content or appearance of this document is unlawful and offenders may be prosecuted to the fullest extent of the law. Unless otherwise stated the results shown in this test report refer only to the sample(s) tested and such sample(s) are retained for 30 days only.

Attention: To check the authenticity of testing/inspection report & certificate, please contact us at telephone: (86-755) 8307 1443, or email: [CN.Doccheck@sgs.com](mailto:CN.Doccheck@sgs.com)

South of No. 6 Plant, No. 1, Runsheng Road, Suzhou Industrial Park, Suzhou Area, China (Jiangsu) Pilot Free Trade Zone 215000 t (86-512) 62992980 www.sgs.com.cn

中国·苏州·中国(江苏)自由贸易试验区苏州片区苏州工业园区润胜路1号的6号厂房南楼 邮编: 215000 t (86-512) 62992980 sgs.china@sgs.com



Report No.: SEWM2306000190RG02

Rev.: 01

Page: 23 of 155

N78(3700-3800)	30	40	DFT-64QAM	H	Inner_1RB_Left	21.99	21.80	24.71	27.65	30.00	PASS
N78(3700-3800)	30	40	DFT-64QAM	H	Inner_1RB_Right	21.86	21.49	24.49	27.43	30.00	PASS
N78(3700-3800)	30	40	DFT-64QAM	H	Outer_Full	21.91	21.79	24.66	27.60	30.00	PASS
N78(3700-3800)	30	40	DFT-256QAM	H	Inner_1RB_Left	18.61	18.44	21.34	24.28	30.00	PASS
N78(3700-3800)	30	40	DFT-256QAM	H	Inner_1RB_Right	18.83	18.53	21.49	24.43	30.00	PASS
N78(3700-3800)	30	40	DFT-256QAM	H	Outer_Full	19.01	18.80	21.72	24.66	30.00	PASS
N78(3700-3800)	30	50	DFT-PI2BPSK	L	Inner_1RB_Left	23.46	23.59	26.34	29.28	30.00	PASS
N78(3700-3800)	30	50	DFT-PI2BPSK	L	Inner_1RB_Right	23.93	23.46	26.51	29.45	30.00	PASS
N78(3700-3800)	30	50	DFT-PI2BPSK	L	Outer_Full	15.55	22.36	22.98	25.92	30.00	PASS
N78(3700-3800)	30	50	DFT-QPSK	L	Inner_1RB_Left	22.96	23.39	25.99	28.93	30.00	PASS
N78(3700-3800)	30	50	DFT-QPSK	L	Inner_1RB_Right	23.52	23.49	26.38	29.32	30.00	PASS
N78(3700-3800)	30	50	DFT-QPSK	L	Outer_Full	22.21	22.35	25.09	28.03	30.00	PASS
N78(3700-3800)	30	50	DFT-16QAM	L	Inner_1RB_Left	22.32	23.06	25.52	28.46	30.00	PASS
N78(3700-3800)	30	50	DFT-16QAM	L	Inner_1RB_Right	23.42	23.31	26.10	29.04	30.00	PASS
N78(3700-3800)	30	50	DFT-16QAM	L	Outer_Full	22.10	22.34	25.03	27.97	30.00	PASS
N78(3700-3800)	30	50	DFT-64QAM	L	Inner_1RB_Left	15.67	21.58	22.37	25.31	30.00	PASS
N78(3700-3800)	30	50	DFT-64QAM	L	Inner_1RB_Right	22.26	21.95	24.92	27.86	30.00	PASS
N78(3700-3800)	30	50	DFT-64QAM	L	Outer_Full	21.47	21.59	24.34	27.28	30.00	PASS
N78(3700-3800)	30	50	DFT-256QAM	L	Inner_1RB_Left	18.38	18.38	21.19	24.13	30.00	PASS
N78(3700-3800)	30	50	DFT-256QAM	L	Inner_1RB_Right	18.92	18.72	21.63	24.57	30.00	PASS
N78(3700-3800)	30	50	DFT-256QAM	L	Outer_Full	18.76	18.68	21.53	24.47	30.00	PASS
N78(3700-3800)	30	50	DFT-PI2BPSK	M	Inner_1RB_Left	23.13	23.37	26.06	29.00	30.00	PASS
N78(3700-3800)	30	50	DFT-PI2BPSK	M	Inner_1RB_Right	23.14	23.53	26.15	29.09	30.00	PASS
N78(3700-3800)	30	50	DFT-PI2BPSK	M	Outer_Full	21.54	22.14	24.66	27.60	30.00	PASS
N78(3700-3800)	30	50	DFT-QPSK	M	Inner_1RB_Left	22.92	23.80	26.19	29.13	30.00	PASS
N78(3700-3800)	30	50	DFT-QPSK	M	Inner_1RB_Right	22.87	16.37	23.55	26.49	30.00	PASS
N78(3700-3800)	30	50	DFT-QPSK	M	Outer_Full	21.73	22.28	24.82	27.76	30.00	PASS
N78(3700-3800)	30	50	DFT-16QAM	M	Inner_1RB_Left	22.66	23.43	25.87	28.81	30.00	PASS
N78(3700-3800)	30	50	DFT-16QAM	M	Inner_1RB_Right	22.84	23.39	25.93	28.87	30.00	PASS
N78(3700-3800)	30	50	DFT-16QAM	M	Outer_Full	21.44	22.15	24.62	27.56	30.00	PASS
N78(3700-3800)	30	50	DFT-64QAM	M	Inner_1RB_Left	21.86	21.88	24.68	27.62	30.00	PASS
N78(3700-3800)	30	50	DFT-64QAM	M	Inner_1RB_Right	21.91	21.72	24.63	27.57	30.00	PASS
N78(3700-3800)	30	50	DFT-64QAM	M	Outer_Full	15.35	21.60	22.32	25.26	30.00	PASS
N78(3700-3800)	30	50	DFT-256QAM	M	Inner_1RB_Left	18.40	18.40	21.21	24.15	30.00	PASS
N78(3700-3800)	30	50	DFT-256QAM	M	Inner_1RB_Right	18.63	18.43	21.34	24.28	30.00	PASS
N78(3700-3800)	30	50	DFT-256QAM	M	Outer_Full	15.03	18.89	20.19	23.13	30.00	PASS
N78(3700-3800)	30	50	DFT-PI2BPSK	H	Inner_1RB_Left	23.33	23.30	25.98	28.92	30.00	PASS



Unless otherwise agreed in writing, this document is issued by the Company subject to its General Conditions of Service printed overleaf, available on request or accessible at <http://www.sgs.com/en/Terms-and-Conditions.aspx> and, for electronic format documents, subject to Terms and Conditions for Electronic Documents at <http://www.sgs.com/en/Terms-and-Conditions/Terms-e-Documents.aspx>. Attention is drawn to the limitation of liability, indemnification and jurisdiction issues defined therein. Any holder of this document is advised that information contained hereon reflects the Company's findings at the time of its intervention only and within the limits of Client's instructions, if any. The Company's sole responsibility is to its Client and this document does not exonerate parties to a transaction from exercising all their rights and obligations under the transaction documents. This document cannot be reproduced except in full, without prior written approval of the Company. Any unauthorized alteration, forgery or falsification of the content or appearance of this document is unlawful and offenders may be prosecuted to the fullest extent of the law. Unless otherwise stated the results shown in this test report refer only to the sample(s) tested and such sample(s) are retained for 30 days only.

Attention: To check the authenticity of testing/inspection report & certificate, please contact us at telephone: (86-755) 8307 1443, or email: [CN.Doccheck@sgs.com](mailto:CN.Doccheck@sgs.com)  
 South of No. 6 Plant, No. 1, Runsheng Road, Suzhou Industrial Park, Suzhou Area, China (Jiangsu) Pilot Free Trade Zone 215000 t (86-512) 62992980 www.sgs.com.cn  
 中国·苏州·中国(江苏)自由贸易试验区苏州片区苏州工业园区润胜路1号的6号厂房南楼 邮编: 215000 t (86-512) 62992980 sgs.china@sgs.com



Report No.: SEWM2306000190RG02

Rev.: 01

Page: 24 of 155

N78(3700-3800)	30	50	DFT-PI2BPSK	H	Inner_1RB_Right	23.10	22.91	25.97	28.91	30.00	PASS
N78(3700-3800)	30	50	DFT-PI2BPSK	H	Outer_Full	22.30	22.32	25.12	28.06	30.00	PASS
N78(3700-3800)	30	50	DFT-QPSK	H	Inner_1RB_Left	23.45	23.38	26.26	29.20	30.00	PASS
N78(3700-3800)	30	50	DFT-QPSK	H	Inner_1RB_Right	23.27	23.39	26.18	29.12	30.00	PASS
N78(3700-3800)	30	50	DFT-QPSK	H	Outer_Full	22.30	22.10	25.01	27.95	30.00	PASS
N78(3700-3800)	30	50	DFT-16QAM	H	Inner_1RB_Left	23.46	23.41	26.25	29.19	30.00	PASS
N78(3700-3800)	30	50	DFT-16QAM	H	Inner_1RB_Right	15.72	23.44	23.92	26.86	30.00	PASS
N78(3700-3800)	30	50	DFT-16QAM	H	Outer_Full	22.45	22.21	25.14	28.08	30.00	PASS
N78(3700-3800)	30	50	DFT-64QAM	H	Inner_1RB_Left	22.20	22.01	24.92	27.86	30.00	PASS
N78(3700-3800)	30	50	DFT-64QAM	H	Inner_1RB_Right	22.14	21.77	24.77	27.71	30.00	PASS
N78(3700-3800)	30	50	DFT-64QAM	H	Outer_Full	21.70	21.58	24.45	27.39	30.00	PASS
N78(3700-3800)	30	50	DFT-256QAM	H	Inner_1RB_Left	18.84	18.67	21.57	24.51	30.00	PASS
N78(3700-3800)	30	50	DFT-256QAM	H	Inner_1RB_Right	18.76	18.46	21.42	24.36	30.00	PASS
N78(3700-3800)	30	50	DFT-256QAM	H	Outer_Full	18.91	18.70	21.62	24.56	30.00	PASS
N78(3700-3800)	30	60	DFT-PI2BPSK	L	Inner_1RB_Left	23.32	23.45	26.20	29.14	30.00	PASS
N78(3700-3800)	30	60	DFT-PI2BPSK	L	Inner_1RB_Right	23.97	23.50	26.55	29.49	30.00	PASS
N78(3700-3800)	30	60	DFT-PI2BPSK	L	Outer_Full	15.52	22.33	22.95	25.89	30.00	PASS
N78(3700-3800)	30	60	DFT-QPSK	L	Inner_1RB_Left	22.97	23.40	26.00	28.94	30.00	PASS
N78(3700-3800)	30	60	DFT-QPSK	L	Inner_1RB_Right	23.58	23.28	26.23	29.17	30.00	PASS
N78(3700-3800)	30	60	DFT-QPSK	L	Outer_Full	22.04	22.18	24.92	27.86	30.00	PASS
N78(3700-3800)	30	60	DFT-16QAM	L	Inner_1RB_Left	22.44	23.18	25.64	28.58	30.00	PASS
N78(3700-3800)	30	60	DFT-16QAM	L	Inner_1RB_Right	23.39	23.20	26.22	29.16	30.00	PASS
N78(3700-3800)	30	60	DFT-16QAM	L	Outer_Full	22.10	22.34	25.03	27.97	30.00	PASS
N78(3700-3800)	30	60	DFT-64QAM	L	Inner_1RB_Left	15.49	21.40	22.19	25.13	30.00	PASS
N78(3700-3800)	30	60	DFT-64QAM	L	Inner_1RB_Right	22.30	21.99	24.96	27.90	30.00	PASS
N78(3700-3800)	30	60	DFT-64QAM	L	Outer_Full	21.49	21.61	24.36	27.30	30.00	PASS
N78(3700-3800)	30	60	DFT-256QAM	L	Inner_1RB_Left	18.32	18.32	21.13	24.07	30.00	PASS
N78(3700-3800)	30	60	DFT-256QAM	L	Inner_1RB_Right	18.61	18.41	21.32	24.26	30.00	PASS
N78(3700-3800)	30	60	DFT-256QAM	L	Outer_Full	18.99	18.91	21.76	24.70	30.00	PASS
N78(3700-3800)	30	60	DFT-PI2BPSK	M	Inner_1RB_Left	23.18	23.42	26.11	29.05	30.00	PASS
N78(3700-3800)	30	60	DFT-PI2BPSK	M	Inner_1RB_Right	23.28	23.67	26.29	29.23	30.00	PASS
N78(3700-3800)	30	60	DFT-PI2BPSK	M	Outer_Full	21.73	22.33	24.85	27.79	30.00	PASS
N78(3700-3800)	30	60	DFT-QPSK	M	Inner_1RB_Left	22.90	23.78	26.17	29.11	30.00	PASS
N78(3700-3800)	30	60	DFT-QPSK	M	Inner_1RB_Right	23.00	16.50	23.68	26.62	30.00	PASS
N78(3700-3800)	30	60	DFT-QPSK	M	Outer_Full	21.62	22.17	24.71	27.65	30.00	PASS
N78(3700-3800)	30	60	DFT-16QAM	M	Inner_1RB_Left	22.68	23.45	25.89	28.83	30.00	PASS
N78(3700-3800)	30	60	DFT-16QAM	M	Inner_1RB_Right	22.68	23.23	25.77	28.71	30.00	PASS



Unless otherwise agreed in writing, this document is issued by the Company subject to its General Conditions of Service printed overleaf, available on request or accessible at <http://www.sgs.com/en/Terms-and-Conditions.aspx> and, for electronic format documents, subject to Terms and Conditions for Electronic Documents at <http://www.sgs.com/en/Terms-and-Conditions/Terms-e-Documents.aspx>. Attention is drawn to the limitation of liability, indemnification and jurisdiction issues defined therein. Any holder of this document is advised that information contained hereon reflects the Company's findings at the time of its intervention only and within the limits of Client's instructions, if any. The Company's sole responsibility is to its Client and this document does not exonerate parties to a transaction from exercising all their rights and obligations under the transaction documents. This document cannot be reproduced except in full, without prior written approval of the Company. Any unauthorized alteration, forgery or falsification of the content or appearance of this document is unlawful and offenders may be prosecuted to the fullest extent of the law. Unless otherwise stated the results shown in this test report refer only to the sample(s) tested and such sample(s) are retained for 30 days only.

Attention: To check the authenticity of testing/inspection report & certificate, please contact us at telephone: (86-755) 8307 1443, or email: [CN.Doccheck@sgs.com](mailto:CN.Doccheck@sgs.com)  
 South of No. 6 Plant, No. 1, Runsheng Road, Suzhou Industrial Park, Suzhou Area, China (Jiangsu) Pilot Free Trade Zone 215000 t (86-512) 62992980 www.sgs.com.cn  
 中国·苏州·中国(江苏)自由贸易试验区苏州片区苏州工业园区润胜路1号的6号厂房南楼 邮编: 215000 t (86-512) 62992980 sgs.china@sgs.com





Report No.: SEWM2306000190RG02

Rev.: 01

Page: 25 of 155

N78(3700-3800)	30	60	DFT-16QAM	M	Outer_Full	21.57	22.28	24.75	27.69	30.00	PASS
N78(3700-3800)	30	60	DFT-64QAM	M	Inner_1RB_Left	21.90	21.92	24.72	27.66	30.00	PASS
N78(3700-3800)	30	60	DFT-64QAM	M	Inner_1RB_Right	21.81	21.62	24.53	27.47	30.00	PASS
N78(3700-3800)	30	60	DFT-64QAM	M	Outer_Full	15.47	21.72	22.44	25.38	30.00	PASS
N78(3700-3800)	30	60	DFT-256QAM	M	Inner_1RB_Left	18.46	18.46	21.27	24.21	30.00	PASS
N78(3700-3800)	30	60	DFT-256QAM	M	Inner_1RB_Right	18.64	18.44	21.35	24.29	30.00	PASS
N78(3700-3800)	30	60	DFT-256QAM	M	Outer_Full	15.00	18.86	20.16	23.10	30.00	PASS
N78(3700-3800)	30	60	DFT-PI2BPSK	H	Inner_1RB_Left	23.37	23.25	26.23	29.17	30.00	PASS
N78(3700-3800)	30	60	DFT-PI2BPSK	H	Inner_1RB_Right	23.13	22.91	26.04	28.98	30.00	PASS
N78(3700-3800)	30	60	DFT-PI2BPSK	H	Outer_Full	22.15	22.17	24.97	27.91	30.00	PASS
N78(3700-3800)	30	60	DFT-QPSK	H	Inner_1RB_Left	23.42	23.55	26.40	29.34	30.00	PASS
N78(3700-3800)	30	60	DFT-QPSK	H	Inner_1RB_Right	23.47	23.19	26.19	29.13	30.00	PASS
N78(3700-3800)	30	60	DFT-QPSK	H	Outer_Full	22.41	22.21	25.12	28.06	30.00	PASS
N78(3700-3800)	30	60	DFT-16QAM	H	Inner_1RB_Left	23.38	23.33	26.17	29.11	30.00	PASS
N78(3700-3800)	30	60	DFT-16QAM	H	Inner_1RB_Right	15.80	23.52	24.00	26.94	30.00	PASS
N78(3700-3800)	30	60	DFT-16QAM	H	Outer_Full	22.45	22.21	25.14	28.08	30.00	PASS
N78(3700-3800)	30	60	DFT-64QAM	H	Inner_1RB_Left	22.05	21.86	24.77	27.71	30.00	PASS
N78(3700-3800)	30	60	DFT-64QAM	H	Inner_1RB_Right	22.15	21.78	24.78	27.72	30.00	PASS
N78(3700-3800)	30	60	DFT-64QAM	H	Outer_Full	21.85	21.73	24.60	27.54	30.00	PASS
N78(3700-3800)	30	60	DFT-256QAM	H	Inner_1RB_Left	18.79	18.62	21.52	24.46	30.00	PASS
N78(3700-3800)	30	60	DFT-256QAM	H	Inner_1RB_Right	18.95	18.65	21.61	24.55	30.00	PASS
N78(3700-3800)	30	60	DFT-256QAM	H	Outer_Full	18.99	18.78	21.70	24.64	30.00	PASS
N78(3700-3800)	30	70	DFT-PI2BPSK	L	Inner_1RB_Left	23.31	23.44	26.19	29.13	30.00	PASS
N78(3700-3800)	30	70	DFT-PI2BPSK	L	Inner_1RB_Right	23.51	23.49	26.36	29.30	30.00	PASS
N78(3700-3800)	30	70	DFT-PI2BPSK	L	Outer_Full	15.44	22.25	22.87	25.81	30.00	PASS
N78(3700-3800)	30	70	DFT-QPSK	L	Inner_1RB_Left	23.06	23.49	26.09	29.03	30.00	PASS
N78(3700-3800)	30	70	DFT-QPSK	L	Inner_1RB_Right	23.13	23.34	26.22	29.16	30.00	PASS
N78(3700-3800)	30	70	DFT-QPSK	L	Outer_Full	22.12	22.26	25.00	27.94	30.00	PASS
N78(3700-3800)	30	70	DFT-16QAM	L	Inner_1RB_Left	22.48	23.22	25.68	28.62	30.00	PASS
N78(3700-3800)	30	70	DFT-16QAM	L	Inner_1RB_Right	23.69	23.61	26.46	29.40	30.00	PASS
N78(3700-3800)	30	70	DFT-16QAM	L	Outer_Full	22.00	22.24	24.93	27.87	30.00	PASS
N78(3700-3800)	30	70	DFT-64QAM	L	Inner_1RB_Left	15.68	21.59	22.38	25.32	30.00	PASS
N78(3700-3800)	30	70	DFT-64QAM	L	Inner_1RB_Right	22.20	21.89	24.86	27.80	30.00	PASS
N78(3700-3800)	30	70	DFT-64QAM	L	Outer_Full	21.69	21.81	24.56	27.50	30.00	PASS
N78(3700-3800)	30	70	DFT-256QAM	L	Inner_1RB_Left	18.27	18.27	21.08	24.02	30.00	PASS
N78(3700-3800)	30	70	DFT-256QAM	L	Inner_1RB_Right	18.99	18.79	21.70	24.64	30.00	PASS
N78(3700-3800)	30	70	DFT-256QAM	L	Outer_Full	19.03	18.95	21.80	24.74	30.00	PASS



Unless otherwise agreed in writing, this document is issued by the Company subject to its General Conditions of Service printed overleaf, available on request or accessible at <http://www.sgs.com/en/Terms-and-Conditions.aspx> and, for electronic format documents, subject to Terms and Conditions for Electronic Documents at <http://www.sgs.com/en/Terms-and-Conditions/Terms-e-Documents.aspx>. Attention is drawn to the limitation of liability, indemnification and jurisdiction issues defined therein. Any holder of this document is advised that information contained hereon reflects the Company's findings at the time of its intervention only and within the limits of Client's instructions, if any. The Company's sole responsibility is to its Client and this document does not exonerate parties to a transaction from exercising all their rights and obligations under the transaction documents. This document cannot be reproduced except in full, without prior written approval of the Company. Any unauthorized alteration, forgery or falsification of the content or appearance of this document is unlawful and offenders may be prosecuted to the fullest extent of the law. Unless otherwise stated the results shown in this test report refer only to the sample(s) tested and such sample(s) are retained for 30 days only.

Attention: To check the authenticity of testing/inspection report & certificate, please contact us at telephone: (86-755) 8307 1443, or email: [CN.Doccheck@sgs.com](mailto:CN.Doccheck@sgs.com)

South of No. 6 Plant, No. 1, Runsheng Road, Suzhou Industrial Park, Suzhou Area, China (Jiangsu) Pilot Free Trade Zone      215000      t (86-512) 62992980      www.sgs.com.cn  
 中国·苏州·中国(江苏)自由贸易试验区苏州片区苏州工业园区润胜路1号的6号厂房南楼      邮编: 215000      t (86-512) 62992980      sgs.china@sgs.com



Table with 12 columns: Test ID, Sample No., Lot No., Modulation, Bandwidth, Frequency, Power, SNR, BER, Error Rate, Pass/Fail. Rows include various modulation schemes like DFT-PI2BPSK, DFT-QPSK, DFT-16QAM, DFT-64QAM, DFT-256QAM for both M and H bands.



Unless otherwise agreed in writing, this document is issued by the Company subject to its General Conditions of Service printed overleaf, available on request or accessible at http://www.sgs.com/en/Terms-and-Conditions.aspx and, for electronic format documents, subject to Terms and Conditions for Electronic Documents at http://www.sgs.com/en/Terms-and-Conditions/Terms-e-Documents.aspx. Attention is drawn to the limitation of liability, indemnification and jurisdiction issues defined therein. Any holder of this document is advised that information contained hereon reflects the Company's findings at the time of its intervention only and within the limits of Client's instructions, if any. The Company's sole responsibility is to its Client and this document does not exonerate parties to a transaction from exercising all their rights and obligations under the transaction documents. This document cannot be reproduced except in full, without prior written approval of the Company. Any unauthorized alteration, forgery or falsification of the content or appearance of this document is unlawful and offenders may be prosecuted to the fullest extent of the law. Unless otherwise stated the results shown in this test report refer only to the sample(s) tested and such sample(s) are retained for 30 days only. Attention: To check the authenticity of testing/inspection report & certificate, please contact us at telephone: (86-755) 8307 1443, or email: CN.Doccheck@sgs.com

South of No. 6 Plant, No. 1, Runsheng Road, Suzhou Industrial Park, Suzhou Area, China (Jiangsu) Pilot Free Trade Zone 215000 t (86-512) 62992980 www.sgs.com.cn  
中国·苏州·中国(江苏)自由贸易试验区苏州片区苏州工业园区润胜路1号的6号厂房南楼 邮编: 215000 t (86-512) 62992980 sgs.china@sgs.com



Table with 12 columns: Item ID, Value 1, Value 2, Test Method, Modulation, Location, and 6 numerical results, and a Pass/Fail status.



Unless otherwise agreed in writing, this document is issued by the Company subject to its General Conditions of Service printed overleaf, available on request or accessible at http://www.sgs.com/en/Terms-and-Conditions.aspx and, for electronic format documents, subject to Terms and Conditions for Electronic Documents at http://www.sgs.com/en/Terms-and-Conditions/Terms-e-Documents.aspx. Attention is drawn to the limitation of liability, indemnification and jurisdiction issues defined therein. Any holder of this document is advised that information contained hereon reflects the Company's findings at the time of its intervention only and within the limits of Client's instructions, if any. The Company's sole responsibility is to its Client and this document does not exonerate parties to a transaction from exercising all their rights and obligations under the transaction documents. This document cannot be reproduced except in full, without prior written approval of the Company. Any unauthorized alteration, forgery or falsification of the content or appearance of this document is unlawful and offenders may be prosecuted to the fullest extent of the law. Unless otherwise stated the results shown in this test report refer only to the sample(s) tested and such sample(s) are retained for 30 days only. Attention: To check the authenticity of testing/inspection report & certificate, please contact us at telephone: (86-755) 8307 1443, or email: CN.Doccheck@sgs.com

South of No. 6 Plant, No. 1, Ruishe Road, Suzhou Industrial Park, Suzhou Area, China (Jiangsu) Pilot Free Trade Zone 215000 t (86-512) 62992980 www.sgs.com.cn  
中国·苏州·中国(江苏)自由贸易试验区苏州片区苏州工业园区润胜路1号的6号厂房南楼 邮编: 215000 t (86-512) 62992980 sgs.china@sgs.com



Report No.: SEWM2306000190RG02

Rev.: 01

Page: 28 of 155

N78(3700-3800)	30	80	DFT-256QAM	H	Outer_Full	18.92	18.71	21.63	24.57	30.00	PASS
N78(3700-3800)	30	90	DFT-PI2BPSK	L	Inner_1RB_Left	23.31	23.44	26.19	29.13	30.00	PASS
N78(3700-3800)	30	90	DFT-PI2BPSK	L	Inner_1RB_Right	23.96	23.49	26.54	29.48	30.00	PASS
N78(3700-3800)	30	90	DFT-PI2BPSK	L	Outer_Full	15.64	22.45	23.07	26.01	30.00	PASS
N78(3700-3800)	30	90	DFT-QPSK	L	Inner_1RB_Left	23.05	23.48	26.08	29.02	30.00	PASS
N78(3700-3800)	30	90	DFT-QPSK	L	Inner_1RB_Right	23.73	23.52	26.44	29.38	30.00	PASS
N78(3700-3800)	30	90	DFT-QPSK	L	Outer_Full	22.07	22.21	24.95	27.89	30.00	PASS
N78(3700-3800)	30	90	DFT-16QAM	L	Inner_1RB_Left	22.63	23.37	25.83	28.77	30.00	PASS
N78(3700-3800)	30	90	DFT-16QAM	L	Inner_1RB_Right	23.60	23.52	26.37	29.31	30.00	PASS
N78(3700-3800)	30	90	DFT-16QAM	L	Outer_Full	22.03	22.27	24.96	27.90	30.00	PASS
N78(3700-3800)	30	90	DFT-64QAM	L	Inner_1RB_Left	15.56	21.47	22.26	25.20	30.00	PASS
N78(3700-3800)	30	90	DFT-64QAM	L	Inner_1RB_Right	22.19	21.88	24.85	27.79	30.00	PASS
N78(3700-3800)	30	90	DFT-64QAM	L	Outer_Full	21.60	21.72	24.47	27.41	30.00	PASS
N78(3700-3800)	30	90	DFT-256QAM	L	Inner_1RB_Left	18.44	18.44	21.25	24.19	30.00	PASS
N78(3700-3800)	30	90	DFT-256QAM	L	Inner_1RB_Right	18.83	18.63	21.54	24.48	30.00	PASS
N78(3700-3800)	30	90	DFT-256QAM	L	Outer_Full	18.70	18.62	21.47	24.41	30.00	PASS
N78(3700-3800)	30	90	DFT-PI2BPSK	M	Inner_1RB_Left	23.35	23.59	26.28	29.22	30.00	PASS
N78(3700-3800)	30	90	DFT-PI2BPSK	M	Inner_1RB_Right	23.23	23.62	26.24	29.18	30.00	PASS
N78(3700-3800)	30	90	DFT-PI2BPSK	M	Outer_Full	21.64	22.24	24.76	27.70	30.00	PASS
N78(3700-3800)	30	90	DFT-QPSK	M	Inner_1RB_Left	22.97	23.85	26.24	29.18	30.00	PASS
N78(3700-3800)	30	90	DFT-QPSK	M	Inner_1RB_Right	22.94	16.44	23.62	26.56	30.00	PASS
N78(3700-3800)	30	90	DFT-QPSK	M	Outer_Full	21.78	22.33	24.87	27.81	30.00	PASS
N78(3700-3800)	30	90	DFT-16QAM	M	Inner_1RB_Left	22.58	23.35	25.79	28.73	30.00	PASS
N78(3700-3800)	30	90	DFT-16QAM	M	Inner_1RB_Right	22.57	23.12	25.66	28.60	30.00	PASS
N78(3700-3800)	30	90	DFT-16QAM	M	Outer_Full	21.61	22.32	24.79	27.73	30.00	PASS
N78(3700-3800)	30	90	DFT-64QAM	M	Inner_1RB_Left	21.71	21.73	24.53	27.47	30.00	PASS
N78(3700-3800)	30	90	DFT-64QAM	M	Inner_1RB_Right	21.81	21.62	24.53	27.47	30.00	PASS
N78(3700-3800)	30	90	DFT-64QAM	M	Outer_Full	15.64	21.89	22.61	25.55	30.00	PASS
N78(3700-3800)	30	90	DFT-256QAM	M	Inner_1RB_Left	18.43	18.43	21.24	24.18	30.00	PASS
N78(3700-3800)	30	90	DFT-256QAM	M	Inner_1RB_Right	18.78	18.58	21.49	24.43	30.00	PASS
N78(3700-3800)	30	90	DFT-256QAM	M	Outer_Full	14.91	18.77	20.07	23.01	30.00	PASS
N78(3700-3800)	30	90	DFT-PI2BPSK	H	Inner_1RB_Left	23.37	23.16	23.28	26.22	30.00	PASS
N78(3700-3800)	30	90	DFT-PI2BPSK	H	Inner_1RB_Right	23.40	23.35	26.32	29.26	30.00	PASS
N78(3700-3800)	30	90	DFT-PI2BPSK	H	Outer_Full	22.29	22.31	25.11	28.05	30.00	PASS
N78(3700-3800)	30	90	DFT-QPSK	H	Inner_1RB_Left	23.20	22.91	26.03	28.97	30.00	PASS
N78(3700-3800)	30	90	DFT-QPSK	H	Inner_1RB_Right	23.13	23.44	26.13	29.07	30.00	PASS
N78(3700-3800)	30	90	DFT-QPSK	H	Outer_Full	22.36	22.16	25.07	28.01	30.00	PASS



Unless otherwise agreed in writing, this document is issued by the Company subject to its General Conditions of Service printed overleaf, available on request or accessible at <http://www.sgs.com/en/Terms-and-Conditions.aspx> and, for electronic format documents, subject to Terms and Conditions for Electronic Documents at <http://www.sgs.com/en/Terms-and-Conditions/Terms-e-Documents.aspx>. Attention is drawn to the limitation of liability, indemnification and jurisdiction issues defined therein. Any holder of this document is advised that information contained hereon reflects the Company's findings at the time of its intervention only and within the limits of Client's instructions, if any. The Company's sole responsibility is to its Client and this document does not exonerate parties to a transaction from exercising all their rights and obligations under the transaction documents. This document cannot be reproduced except in full, without prior written approval of the Company. Any unauthorized alteration, forgery or falsification of the content or appearance of this document is unlawful and offenders may be prosecuted to the fullest extent of the law. Unless otherwise stated the results shown in this test report refer only to the sample(s) tested and such sample(s) are retained for 30 days only.

Attention: To check the authenticity of testing/inspection report and certificate, please contact us at telephone: (86-755) 8307 1443, or email: [CN.Doccheck@sgs.com](mailto:CN.Doccheck@sgs.com)

South of No. 6 Plant, No. 1, Runsheng Road, Suzhou Industrial Park, Suzhou Area, China (Jiangsu) Pilot Free Trade Zone 215000 t (86-512) 62992980 www.sgs.com.cn  
 中国·苏州·中国(江苏)自由贸易试验区苏州片区苏州工业园区润胜路1号的6号厂房南楼 邮编: 215000 t (86-512) 62992980 sgs.china@sgs.com



Report No.: SEWM2306000190RG02

Rev.: 01

Page: 29 of 155

N78(3700-3800)	30	90	DFT-16QAM	H	Inner_1RB_Left	23.48	23.43	26.27	29.21	30.00	PASS
N78(3700-3800)	30	90	DFT-16QAM	H	Inner_1RB_Right	15.77	23.49	23.97	26.91	30.00	PASS
N78(3700-3800)	30	90	DFT-16QAM	H	Outer_Full	22.38	22.14	25.07	28.01	30.00	PASS
N78(3700-3800)	30	90	DFT-64QAM	H	Inner_1RB_Left	22.06	21.87	24.78	27.72	30.00	PASS
N78(3700-3800)	30	90	DFT-64QAM	H	Inner_1RB_Right	22.19	21.82	24.82	27.76	30.00	PASS
N78(3700-3800)	30	90	DFT-64QAM	H	Outer_Full	21.92	21.80	24.67	27.61	30.00	PASS
N78(3700-3800)	30	90	DFT-256QAM	H	Inner_1RB_Left	18.51	18.34	21.24	24.18	30.00	PASS
N78(3700-3800)	30	90	DFT-256QAM	H	Inner_1RB_Right	18.68	18.38	21.34	24.28	30.00	PASS
N78(3700-3800)	30	90	DFT-256QAM	H	Outer_Full	19.09	18.88	21.80	24.74	30.00	PASS
N78(3700-3800)	30	100	DFT-PI2BPSK	L	Inner_1RB_Left	23.42	23.55	26.30	29.24	30.00	PASS
N78(3700-3800)	30	100	DFT-PI2BPSK	L	Inner_1RB_Right	23.74	23.27	26.32	29.26	30.00	PASS
N78(3700-3800)	30	100	DFT-PI2BPSK	L	Outer_Full	15.42	22.23	22.85	25.79	30.00	PASS
N78(3700-3800)	30	100	DFT-QPSK	L	Inner_1RB_Left	22.94	23.37	25.97	28.91	30.00	PASS
N78(3700-3800)	30	100	DFT-QPSK	L	Inner_1RB_Right	23.47	23.17	25.95	28.89	30.00	PASS
N78(3700-3800)	30	100	DFT-QPSK	L	Outer_Full	21.98	22.12	24.86	27.80	30.00	PASS
N78(3700-3800)	30	100	DFT-16QAM	L	Inner_1RB_Left	22.47	23.21	25.67	28.61	30.00	PASS
N78(3700-3800)	30	100	DFT-16QAM	L	Inner_1RB_Right	23.69	23.61	26.46	29.40	30.00	PASS
N78(3700-3800)	30	100	DFT-16QAM	L	Outer_Full	22.04	22.28	24.97	27.91	30.00	PASS
N78(3700-3800)	30	100	DFT-64QAM	L	Inner_1RB_Left	15.36	21.27	22.06	25.00	30.00	PASS
N78(3700-3800)	30	100	DFT-64QAM	L	Inner_1RB_Right	22.22	21.91	24.88	27.82	30.00	PASS
N78(3700-3800)	30	100	DFT-64QAM	L	Outer_Full	21.68	21.80	24.55	27.49	30.00	PASS
N78(3700-3800)	30	100	DFT-256QAM	L	Inner_1RB_Left	18.21	18.21	21.02	23.96	30.00	PASS
N78(3700-3800)	30	100	DFT-256QAM	L	Inner_1RB_Right	18.91	18.71	21.62	24.56	30.00	PASS
N78(3700-3800)	30	100	DFT-256QAM	L	Outer_Full	18.86	18.78	21.63	24.57	30.00	PASS
N78(3700-3800)	30	100	DFT-PI2BPSK	M	Inner_1RB_Left	23.37	23.61	26.30	29.24	30.00	PASS
N78(3700-3800)	30	100	DFT-PI2BPSK	M	Inner_1RB_Right	23.28	23.67	26.29	29.23	30.00	PASS
N78(3700-3800)	30	100	DFT-PI2BPSK	M	Outer_Full	21.57	22.17	24.69	27.63	30.00	PASS
N78(3700-3800)	30	100	DFT-QPSK	M	Inner_1RB_Left	22.81	23.69	26.08	29.02	30.00	PASS
N78(3700-3800)	30	100	DFT-QPSK	M	Inner_1RB_Right	22.82	16.32	23.50	26.44	30.00	PASS
N78(3700-3800)	30	100	DFT-QPSK	M	Outer_Full	21.74	22.29	24.83	27.77	30.00	PASS
N78(3700-3800)	30	100	DFT-16QAM	M	Inner_1RB_Left	22.54	23.31	25.75	28.69	30.00	PASS
N78(3700-3800)	30	100	DFT-16QAM	M	Inner_1RB_Right	22.71	23.26	25.80	28.74	30.00	PASS
N78(3700-3800)	30	100	DFT-16QAM	M	Outer_Full	21.82	22.53	25.00	27.94	30.00	PASS
N78(3700-3800)	30	100	DFT-64QAM	M	Inner_1RB_Left	21.84	21.86	24.66	27.60	30.00	PASS
N78(3700-3800)	30	100	DFT-64QAM	M	Inner_1RB_Right	21.99	21.80	24.71	27.65	30.00	PASS
N78(3700-3800)	30	100	DFT-64QAM	M	Outer_Full	15.54	21.79	22.51	25.45	30.00	PASS
N78(3700-3800)	30	100	DFT-256QAM	M	Inner_1RB_Left	18.40	18.40	21.21	24.15	30.00	PASS



Unless otherwise agreed in writing, this document is issued by the Company subject to its General Conditions of Service printed overleaf, available on request or accessible at <http://www.sgs.com/en/Terms-and-Conditions.aspx> and, for electronic format documents, subject to Terms and Conditions for Electronic Documents at <http://www.sgs.com/en/Terms-and-Conditions/Terms-e-Documents.aspx>. Attention is drawn to the limitation of liability, indemnification and jurisdiction issues defined therein. Any holder of this document is advised that information contained hereon reflects the Company's findings at the time of its intervention only and within the limits of Client's instructions, if any. The Company's sole responsibility is to its Client and this document does not exonerate parties to a transaction from exercising all their rights and obligations under the transaction documents. This document cannot be reproduced except in full, without prior written approval of the Company. Any unauthorized alteration, forgery or falsification of the content or appearance of this document is unlawful and offenders may be prosecuted to the fullest extent of the law. Unless otherwise stated the results shown in this test report refer only to the sample(s) tested and such sample(s) are retained for 30 days only.

Attention: To check the authenticity of testing/inspection report & certificate, please contact us at telephone: (86-755) 8307 1443, or email: [CN.Doccheck@sgs.com](mailto:CN.Doccheck@sgs.com)  
 South of No. 6 Plant, No. 1, Runsheng Road, Suzhou Industrial Park, Suzhou Area, China (Jiangsu) Pilot Free Trade Zone 215000 t (86-512) 62992980 www.sgs.com.cn  
 中国·苏州·中国(江苏)自由贸易试验区苏州片区苏州工业园区润胜路1号的6号厂房南楼 邮编: 215000 t (86-512) 62992980 sgs.china@sgs.com



Report No.: SEWM2306000190RG02

Rev.: 01

Page: 30 of 155

N78(3700-3800)	30	100	DFT-256QAM	M	Inner_1RB_Right	18.52	18.32	21.23	24.17	30.00	PASS
N78(3700-3800)	30	100	DFT-256QAM	M	Outer_Full	14.93	18.79	20.09	23.03	30.00	PASS
N78(3700-3800)	30	100	DFT-PI2BPSK	H	Inner_1RB_Left	23.42	23.40	26.31	29.25	30.00	PASS
N78(3700-3800)	30	100	DFT-PI2BPSK	H	Inner_1RB_Right	23.19	23.31	26.13	29.07	30.00	PASS
N78(3700-3800)	30	100	DFT-PI2BPSK	H	Outer_Full	22.51	22.53	25.33	28.27	30.00	PASS
N78(3700-3800)	30	100	DFT-QPSK	H	Inner_1RB_Left	23.85	23.71	26.59	29.53	30.00	PASS
N78(3700-3800)	30	100	DFT-QPSK	H	Inner_1RB_Right	23.86	23.79	26.64	29.58	30.00	PASS
N78(3700-3800)	30	100	DFT-QPSK	H	Outer_Full	22.47	22.27	25.18	28.12	30.00	PASS
N78(3700-3800)	30	100	DFT-16QAM	H	Inner_1RB_Left	23.62	23.57	26.41	29.35	30.00	PASS
N78(3700-3800)	30	100	DFT-16QAM	H	Inner_1RB_Right	15.77	23.49	23.97	26.91	30.00	PASS
N78(3700-3800)	30	100	DFT-16QAM	H	Outer_Full	22.51	22.27	25.20	28.14	30.00	PASS
N78(3700-3800)	30	100	DFT-64QAM	H	Inner_1RB_Left	22.04	21.85	24.76	27.70	30.00	PASS
N78(3700-3800)	30	100	DFT-64QAM	H	Inner_1RB_Right	22.04	21.67	24.67	27.61	30.00	PASS
N78(3700-3800)	30	100	DFT-64QAM	H	Outer_Full	21.76	21.64	24.51	27.45	30.00	PASS
N78(3700-3800)	30	100	DFT-256QAM	H	Inner_1RB_Left	18.65	18.48	21.38	24.32	30.00	PASS
N78(3700-3800)	30	100	DFT-256QAM	H	Inner_1RB_Right	18.85	18.55	21.51	24.45	30.00	PASS
N78(3700-3800)	30	100	DFT-256QAM	H	Outer_Full	18.93	18.72	21.64	24.58	30.00	PASS



Unless otherwise agreed in writing, this document is issued by the Company subject to its General Conditions of Service printed overleaf, available on request or accessible at <http://www.sgs.com/en/Terms-and-Conditions.aspx> and, for electronic format documents, subject to Terms and Conditions for Electronic Documents at <http://www.sgs.com/en/Terms-and-Conditions/Terms-e-Documents.aspx>. Attention is drawn to the limitation of liability, indemnification and jurisdiction issues defined therein. Any holder of this document is advised that information contained hereon reflects the Company's findings at the time of its intervention only and within the limits of Client's instructions, if any. The Company's sole responsibility is to its Client and this document does not exonerate parties to a transaction from exercising all their rights and obligations under the transaction documents. This document cannot be reproduced except in full, without prior written approval of the Company. Any unauthorized alteration, forgery or falsification of the content or appearance of this document is unlawful and offenders may be prosecuted to the fullest extent of the law. Unless otherwise stated the results shown in this test report refer only to the sample(s) tested and such sample(s) are retained for 30 days only.

Attention: To check the authenticity of testing/inspection report & certificate, please contact us at telephone: (86-755) 8307 1443, or email: [CN.Doccheck@sgs.com](mailto:CN.Doccheck@sgs.com)

South of No. 6 Plant, No. 1, Runsheng Road, Suzhou Industrial Park, Suzhou Area, China (Jiangsu) Pilot Free Trade Zone 215000  
 中国·苏州·中国(江苏)自由贸易试验区苏州片区苏州工业园区润胜路1号的6号厂房南楼 邮编: 215000

t (86-512) 62992980 www.sgs.com.cn  
 t (86-512) 62992980 sgs.china@sgs.com

## Peak-to-Average Ratio for UL MIMO

### Peak-to-Average Ratio(PAPR)

#### Test Result

Band	SCS	Bandwidth	Modulation	Channel	RB Config	DutyCycle	Factor	Result	Limit	Verdict
N78-3700-3800	30	100	DFT-256QAM	L	Outer_Full	100%	0.00	9.91	≤13	PASS
N78-3700-3800	30	100	CP-256QAM	L	Outer_Full	100%	0.00	9.90	≤13	PASS
N78-3700-3800	30	100	DFT-256QAM	M	Outer_Full	100%	0.00	10.03	≤13	PASS
N78-3700-3800	30	100	CP-256QAM	M	Outer_Full	100%	0.00	9.46	≤13	PASS
N78-3700-3800	30	100	DFT-256QAM	H	Outer_Full	100%	0.00	9.42	≤13	PASS
N78-3700-3800	30	100	CP-256QAM	H	Outer_Full	100%	0.00	9.64	≤13	PASS



Unless otherwise agreed in writing, this document is issued by the Company subject to its General Conditions of Service printed overleaf, available on request or accessible at <http://www.sgs.com/en/Terms-and-Conditions.aspx> and, for electronic format documents, subject to Terms and Conditions for Electronic Documents at <http://www.sgs.com/en/Terms-and-Conditions/Terms-e-Documents.aspx>. Attention is drawn to the limitation of liability, indemnification and jurisdiction issues defined therein. Any holder of this document is advised that information contained hereon reflects the Company's findings at the time of its intervention only and within the limits of Client's instructions, if any. The Company's sole responsibility is to its Client and this document does not exonerate parties to a transaction from exercising all their rights and obligations under the transaction documents. This document cannot be reproduced except in full, without prior written approval of the Company. Any unauthorized alteration, forgery or falsification of the content or appearance of this document is unlawful and offenders may be prosecuted to the fullest extent of the law. Unless otherwise stated the results shown in this test report refer only to the sample(s) tested and such sample(s) are retained for 30 days only.

Attention: To check the authenticity of testing/inspection report & certificate, please contact us at telephone: (86-755) 8307 1443, or email: [CN.Doccheck@sgs.com](mailto:CN.Doccheck@sgs.com)

South of No. 6 Plant, No. 1, Runsheng Road, Suzhou Industrial Park, Suzhou Area, China (Jiangsu) Pilot Free Trade Zone 215000 t (86-512) 62992980 www.sgsgroup.com.cn  
 中国·苏州·中国(江苏)自由贸易试验区苏州片区苏州工业园区润胜路1号的6号厂房南楼 邮编: 215000 t (86-512) 62992980 sgs.china@sgs.com

Test Graphs

<p>1-N78-3700-3800-PC1-30-100-L-1-DFT-256QAM-Outer_Full-270@0-Ant1-9.91-100%-0.00-9.91-PASS-≤13</p>	<p>1-N78-3700-3800-PC1-30-100-L-2-CP-256QAM-Outer_Full-273@0-Ant1-9.90-100%-0.00-9.90-PASS-≤13</p>
<p>1-N78-3700-3800-PC1-30-100-M-1-DFT-256QAM-Outer_Full-270@0-Ant1-10.03-100%-0.00-10.03-PASS-≤13</p>	<p>1-N78-3700-3800-PC1-30-100-M-2-CP-256QAM-Outer_Full-273@0-Ant1-9.46-100%-0.00-9.46-PASS-≤13</p>



Unless otherwise agreed in writing, this document is issued by the Company subject to its General Conditions of Service printed overleaf, available on request or accessible at <http://www.sgs.com/en/Terms-and-Conditions.aspx> and, for electronic format documents, subject to Terms and Conditions for Electronic Documents at <http://www.sgs.com/en/Terms-and-Conditions/Terms-e-Documents.aspx>. Attention is drawn to the limitation of liability, indemnification and jurisdiction issues defined therein. Any holder of this document is advised that information contained hereon reflects the Company's findings at the time of its intervention only and within the limits of Client's instructions, if any. The Company's sole responsibility is to its Client and this document does not exonerate parties to a transaction from exercising all their rights and obligations under the transaction documents. This document cannot be reproduced except in full, without prior written approval of the Company. Any unauthorized alteration, forgery or falsification of the content or appearance of this document is unlawful and offenders may be prosecuted to the fullest extent of the law. Unless otherwise stated the results shown in this test report refer only to the sample(s) tested and such sample(s) are retained for 30 days only.

Attention: To check the authenticity of testing/inspection report & certificate, please contact us at telephone: (86-755) 8307 1443, or email: [CN.Doccheck@sgs.com](mailto:CN.Doccheck@sgs.com)

South of No. 6 Plant, No. 1, Runsheng Road, Suzhou Industrial Park, Suzhou Area, China (Jiangsu) Pilot Free Trade Zone 215000  
 中国·苏州·中国(江苏)自由贸易试验区苏州片区苏州工业园区润胜路1号的6号厂房南面 邮编: 215000

t (86-512) 62992980 www.sgs.com.cn  
 t (86-512) 62992980 sgs.china@sgs.com





1-N78-3700-3800-PC1-30-100-H-1-DFT-256QAM-Outer\_Full-270@0-Ant1-9.42-100%-0.00-9.42-PASS-≤13

1-N78-3700-3800-PC1-30-100-H-2-CP-256QAM-Outer\_Full-273@0-Ant1-9.64-100%-0.00-9.64-PASS-≤13



Unless otherwise agreed in writing, this document is issued by the Company subject to its General Conditions of Service printed overleaf, available on request or accessible at <http://www.sgs.com/en/Terms-and-Conditions.aspx> and, for electronic format documents, subject to Terms and Conditions for Electronic Documents at <http://www.sgs.com/en/Terms-and-Conditions/Terms-e-Documents.aspx>. Attention is drawn to the limitation of liability, indemnification and jurisdiction issues defined therein. Any holder of this document is advised that information contained hereon reflects the Company's findings at the time of its intervention only and within the limits of Client's instructions, if any. The Company's sole responsibility is to its Client and this document does not exonerate parties to a transaction from exercising all their rights and obligations under the transaction documents. This document cannot be reproduced except in full, without prior written approval of the Company. Any unauthorized alteration, forgery or falsification of the content or appearance of this document is unlawful and offenders may be prosecuted to the fullest extent of the law. Unless otherwise stated the results shown in this test report refer only to the sample(s) tested and such sample(s) are retained for 30 days only.

Attention: To check the authenticity of testing/inspection report & certificate, please contact us at telephone: (86-755) 8307 1443, or email: [CN.Doccheck@sgs.com](mailto:CN.Doccheck@sgs.com)  
 South of No. 6 Plant, No. 1, Runsheng Road, Suzhou Industrial Park, Suzhou Area, China (Jiangsu) Pilot Free Trade Zone 215000 t (86-512) 62992980 www.sgs.com.cn  
 中国·苏州·中国(江苏)自由贸易试验区苏州片区苏州工业园区润胜路1号的6号厂房南座 邮编: 215000 t (86-512) 62992980 sgs.china@sgs.com

## Modulation characteristics for UL MIMO

### Test Result

Band	SCS	Bandwidth	Modulation	Channel	RB Config	Result	Verdict
N78-3700-3800	30	100	DFT-PI2BPSK	M	Outer_Full	see graph	PASS
N78-3700-3800	30	100	DFT-QPSK	M	Outer_Full	see graph	PASS
N78-3700-3800	30	100	DFT-16QAM	M	Outer_Full	see graph	PASS
N78-3700-3800	30	100	DFT-64QAM	M	Outer_Full	see graph	PASS
N78-3700-3800	30	100	DFT-256QAM	M	Outer_Full	see graph	PASS
N78-3700-3800	30	100	CP-QPSK	M	Outer_Full	see graph	PASS
N78-3700-3800	30	100	CP-16QAM	M	Outer_Full	see graph	PASS
N78-3700-3800	30	100	CP-64QAM	M	Outer_Full	see graph	PASS
N78-3700-3800	30	100	CP-256QAM	M	Outer_Full	see graph	PASS

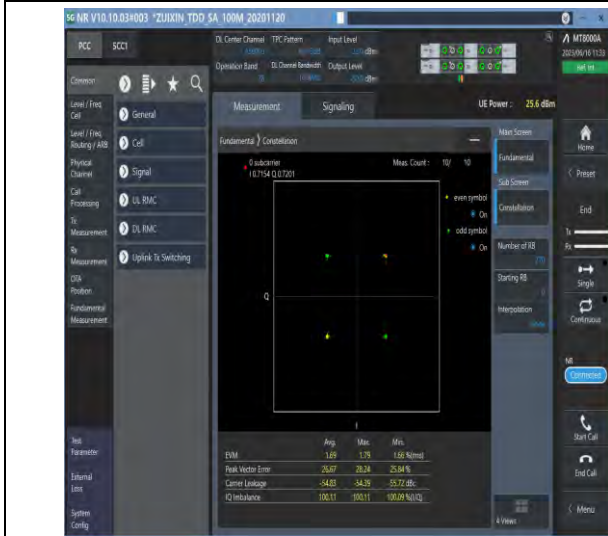


Unless otherwise agreed in writing, this document is issued by the Company subject to its General Conditions of Service printed overleaf, available on request or accessible at <http://www.sgs.com/en/Terms-and-Conditions.aspx> and, for electronic format documents, subject to Terms and Conditions for Electronic Documents at <http://www.sgs.com/en/Terms-and-Conditions/Terms-e-Documents.aspx>. Attention is drawn to the limitation of liability, indemnification and jurisdiction issues defined therein. Any holder of this document is advised that information contained hereon reflects the Company's findings at the time of its intervention only and within the limits of Client's instructions, if any. The Company's sole responsibility is to its Client and this document does not exonerate parties to a transaction from exercising all their rights and obligations under the transaction documents. This document cannot be reproduced except in full, without prior written approval of the Company. Any unauthorized alteration, forgery or falsification of the content or appearance of this document is unlawful and offenders may be prosecuted to the fullest extent of the law. Unless otherwise stated the results shown in this test report refer only to the sample(s) tested and such sample(s) are retained for 30 days only.  
**Attention:** To check the authenticity of testing/inspection report & certificate, please contact us at telephone: (86-755) 8307 1443, or email: [CN.Doccheck@sgs.com](mailto:CN.Doccheck@sgs.com)

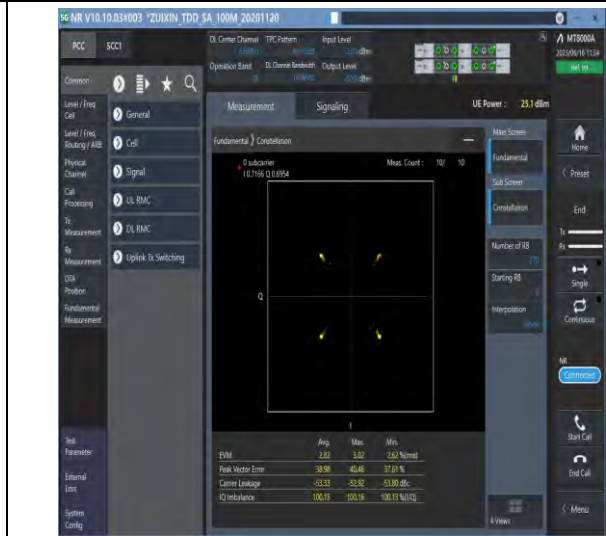
South of No. 6 Plant, No. 1, Runsheng Road, Suzhou Industrial Park, Suzhou Area, China (Jiangsu) Pilot Free Trade Zone 215000  
 中国·苏州·中国(江苏)自由贸易试验区苏州片区苏州工业园区润胜路1号的6号厂房南座 邮编: 215000

t (86-512) 62992980 www.sgs.com.cn  
 t (86-512) 62992980 sgs.china@sgs.com

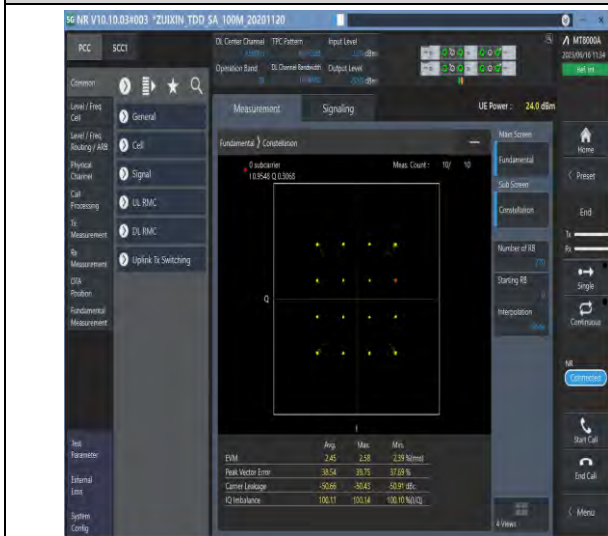
Test Graphs



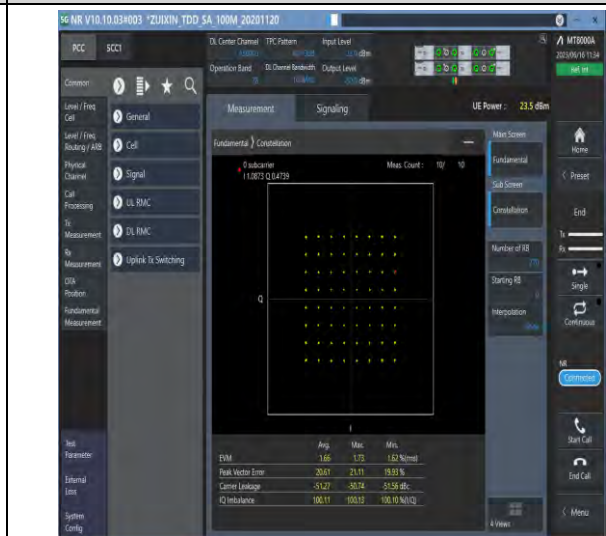
1-N78-3700-3800-PC1-30-100-M-1-DFT-PI2BPSK-Outer\_Full-270@0-Ant1-see graph-PASS



1-N78-3700-3800-PC1-30-100-M-2-DFT-QPSK-Out er\_Full-270@0-Ant1-see graph-PASS



1-N78-3700-3800-PC1-30-100-M-3-DFT-16QAM-Out er\_Full-270@0-Ant1-see graph-PASS



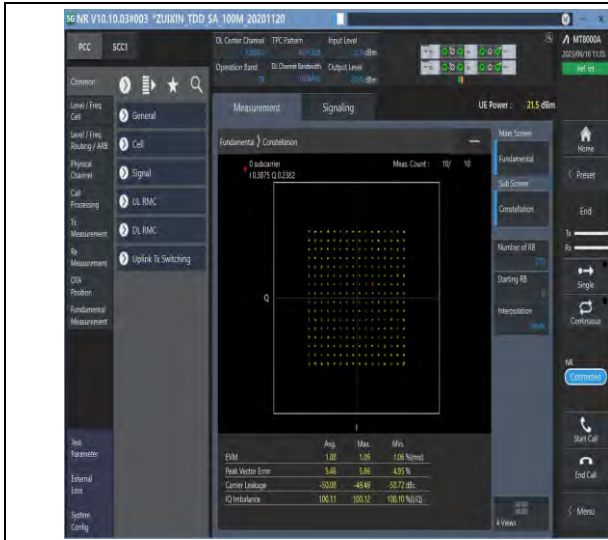
1-N78-3700-3800-PC1-30-100-M-4-DFT-64QAM-Out er\_Full-270@0-Ant1-see graph-PASS



Unless otherwise agreed in writing, this document is issued by the Company subject to its General Conditions of Service printed overleaf, available on request or accessible at <http://www.sgs.com/en/Terms-and-Conditions.aspx> and, for electronic format documents, subject to Terms and Conditions for Electronic Documents at <http://www.sgs.com/en/Terms-and-Conditions/Terms-e-Documents.aspx>. Attention is drawn to the limitation of liability, indemnification and jurisdiction issues defined therein. Any holder of this document is advised that information contained hereon reflects the Company's findings at the time of its intervention only and within the limits of Client's instructions, if any. The Company's sole responsibility is to its Client and this document does not exonerate parties to a transaction from exercising all their rights and obligations under the transaction documents. This document cannot be reproduced except in full, without prior written approval of the Company. Any unauthorized alteration, forgery or falsification of the content or appearance of this document is unlawful and offenders may be prosecuted to the fullest extent of the law. Unless otherwise stated the results shown in this test report refer only to the sample(s) tested and such sample(s) are retained for 30 days only.

South of No. 6 Plant, No. 1, Runsheng Road, Suzhou Industrial Park, Suzhou Area, China (Jiangsu) Pilot Free Trade Zone  
 中国·苏州·中国(江苏)自由贸易试验区苏州片区苏州工业园区润胜路1号的6号厂房南面 邮编: 215000

t (86-512) 62992980 www.sgsgroup.com.cn  
 t (86-512) 62992980 sgs.china@sgs.com



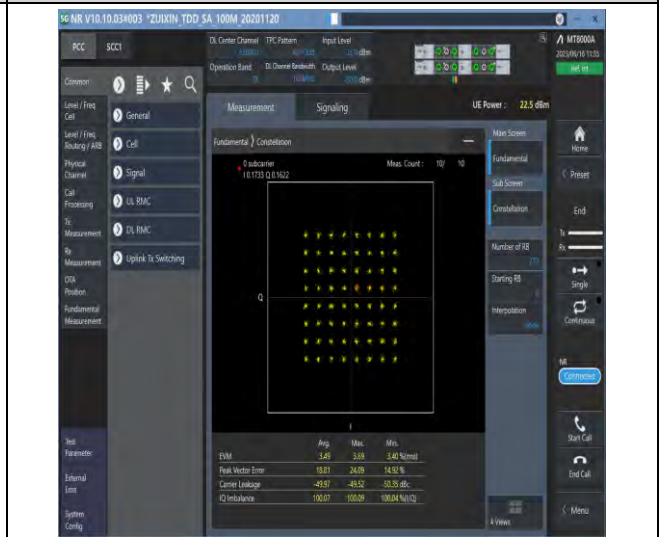
1-N78-3700-3800-PC1-30-100-M-5-DFT-256QAM-Outer\_Full-270@0-Ant1-see graph-PASS



1-N78-3700-3800-PC1-30-100-M-6-CP-QPSK-Outer\_Full-273@0-Ant1-see graph-PASS



1-N78-3700-3800-PC1-30-100-M-7-CP-16QAM-Outer\_Full-273@0-Ant1-see graph-PASS

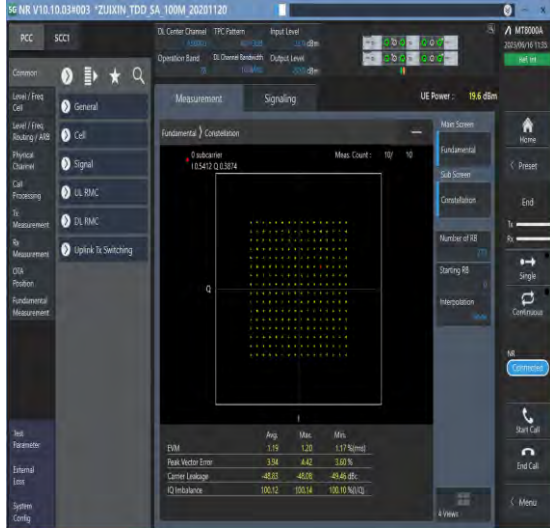


1-N78-3700-3800-PC1-30-100-M-8-CP-64QAM-Outer\_Full-273@0-Ant1-see graph-PASS



Unless otherwise agreed in writing, this document is issued by the Company subject to its General Conditions of Service printed overleaf, available on request or accessible at <http://www.sgs.com/en/Terms-and-Conditions.aspx> and, for electronic format documents, subject to Terms and Conditions for Electronic Documents at <http://www.sgs.com/en/Terms-and-Conditions/Terms-e-Documents.aspx>. Attention is drawn to the limitation of liability, indemnification and jurisdiction issues defined therein. Any holder of this document is advised that information contained hereon reflects the Company's findings at the time of its intervention only and within the limits of Client's instructions, if any. The Company's sole responsibility is to its Client and this document does not exonerate parties to a transaction from exercising all their rights and obligations under the transaction documents. This document cannot be reproduced except in full, without prior written approval of the Company. Any unauthorized alteration, forgery or falsification of the content or appearance of this document is unlawful and offenders may be prosecuted to the fullest extent of the law. Unless otherwise stated the results shown in this test report refer only to the sample(s) tested and such sample(s) are retained for 30 days only.

Attention: To check the authenticity of testing/inspection report & certificate, please contact us at telephone: (86-755) 8307 1443, or email: [CN.Doccheck@sgs.com](mailto:CN.Doccheck@sgs.com)  
 South of No. 6 Plant, No. 1, Runsheng Road, Suzhou Industrial Park, Suzhou Area, China (Jiangsu) Pilot Free Trade Zone 215000 t (86-512) 62992980 www.sgs.com.cn  
 中国·苏州·中国(江苏)自由贸易试验区苏州片区苏州工业园区润胜路1号的6号厂房南楼 邮编: 215000 t (86-512) 62992980 sgs.china@sgs.com



The screenshot shows a software interface for network measurement. At the top, it displays 'sg NR V10.10.034003 \*ZUIXIN TDD SA 100M 20201120'. The main area is divided into 'Measurement' and 'Signaling' tabs. A 'Fundamental' measurement is active, showing a constellation diagram with a 'Meas Count: 10 / 10'. Below the diagram, a table lists performance metrics:

	Avg	Max	Min
EVM	1.19	1.20	1.175min
Peak Vector Error	3.94	4.42	3.03 %
Center Leakage	-48.03	-48.06	-48.46 dBc
IQ Imbalance	100.12	100.14	100.10 %/IQ

At the bottom of the screenshot, the text '1-N78-3700-3800-PC1-30-100-M-9-CP-256QAM-Out er\_Full-273@0-Ant1-see graph-PASS' is visible.



Unless otherwise agreed in writing, this document is issued by the Company subject to its General Conditions of Service printed overleaf, available on request or accessible at <http://www.sgs.com/en/Terms-and-Conditions.aspx> and, for electronic format documents, subject to Terms and Conditions for Electronic Documents at <http://www.sgs.com/en/Terms-and-Conditions/Terms-e-Documents.aspx>. Attention is drawn to the limitation of liability, indemnification and jurisdiction issues defined therein. Any holder of this document is advised that information contained hereon reflects the Company's findings at the time of its intervention only and within the limits of Client's instructions, if any. The Company's sole responsibility is to its Client and this document does not exonerate parties to a transaction from exercising all their rights and obligations under the transaction documents. This document cannot be reproduced except in full, without prior written approval of the Company. Any unauthorized alteration, forgery or falsification of the content or appearance of this document is unlawful and offenders may be prosecuted to the fullest extent of the law. Unless otherwise stated the results shown in this test report refer only to the sample(s) tested and such sample(s) are retained for 30 days only.

Attention: To check the authenticity of testing/inspection report & certificate, please contact us at telephone: (86-755) 8307 1443, or email: [CN.Doccheck@sgs.com](mailto:CN.Doccheck@sgs.com)

South of No. 6 Plant, No. 1, Runsheng Road, Suzhou Industrial Park, Suzhou Area, China (Jiangsu) Pilot Free Trade Zone 215000 t (86-512) 62992980 www.sgs.com.cn  
 中国·苏州·中国(江苏)自由贸易试验区苏州片区苏州工业园区润胜路1号的6号厂房南楼 邮编: 215000 t (86-512) 62992980 sgs.china@sgs.com

## 26dB Bandwidth and Occupied Bandwidth for UL MIMO

### Test Result

Band	SCS	Bandwidth	Modulation	Channel	RB Config	Result (99%)	Result (26dB)	Verdict
N78-3700-3800	30	10	DFT-QPSK	L	Outer_Full	8.626	9.880	PASS
N78-3700-3800	30	10	DFT-PI2BPSK	L	Outer_Full	8.596	9.740	PASS
N78-3700-3800	30	10	DFT-16QAM	L	Outer_Full	8.596	9.620	PASS
N78-3700-3800	30	10	DFT-64QAM	L	Outer_Full	8.585	9.680	PASS
N78-3700-3800	30	10	DFT-256QAM	L	Outer_Full	8.592	10.000	PASS
N78-3700-3800	30	10	CP-QPSK	L	Outer_Full	8.597	10.060	PASS
N78-3700-3800	30	10	CP-16QAM	L	Outer_Full	8.595	9.780	PASS
N78-3700-3800	30	10	CP-64QAM	L	Outer_Full	8.584	9.760	PASS
N78-3700-3800	30	10	CP-256QAM	L	Outer_Full	8.602	9.780	PASS
N78-3700-3800	30	10	DFT-QPSK	M	Outer_Full	8.623	9.880	PASS
N78-3700-3800	30	10	DFT-PI2BPSK	M	Outer_Full	8.609	9.760	PASS
N78-3700-3800	30	10	DFT-16QAM	M	Outer_Full	8.613	9.840	PASS
N78-3700-3800	30	10	DFT-64QAM	M	Outer_Full	8.596	9.720	PASS
N78-3700-3800	30	10	DFT-256QAM	M	Outer_Full	8.579	9.520	PASS
N78-3700-3800	30	10	CP-QPSK	M	Outer_Full	8.580	10.100	PASS
N78-3700-3800	30	10	CP-16QAM	M	Outer_Full	8.605	9.960	PASS
N78-3700-3800	30	10	CP-64QAM	M	Outer_Full	8.604	9.880	PASS
N78-3700-3800	30	10	CP-256QAM	M	Outer_Full	8.573	9.580	PASS
N78-3700-3800	30	10	DFT-QPSK	H	Outer_Full	8.616	9.840	PASS
N78-3700-3800	30	10	DFT-PI2BPSK	H	Outer_Full	8.599	9.720	PASS
N78-3700-3800	30	10	DFT-16QAM	H	Outer_Full	8.596	9.620	PASS
N78-3700-3800	30	10	DFT-64QAM	H	Outer_Full	8.578	9.680	PASS
N78-3700-3800	30	10	DFT-256QAM	H	Outer_Full	8.600	10.080	PASS
N78-3700-3800	30	10	CP-QPSK	H	Outer_Full	8.599	10.100	PASS
N78-3700-3800	30	10	CP-16QAM	H	Outer_Full	8.597	9.920	PASS
N78-3700-3800	30	10	CP-64QAM	H	Outer_Full	8.595	9.860	PASS
N78-3700-3800	30	10	CP-256QAM	H	Outer_Full	8.586	9.680	PASS
N78-3700-3800	30	15	DFT-QPSK	L	Outer_Full	12.916	14.340	PASS
N78-3700-3800	30	15	DFT-PI2BPSK	L	Outer_Full	12.889	14.490	PASS
N78-3700-3800	30	15	DFT-16QAM	L	Outer_Full	12.897	14.400	PASS
N78-3700-3800	30	15	DFT-64QAM	L	Outer_Full	12.894	14.400	PASS
N78-3700-3800	30	15	DFT-256QAM	L	Outer_Full	12.863	14.280	PASS



Unless otherwise agreed in writing, this document is issued by the Company subject to its General Conditions of Service printed overleaf, available on request or accessible at <http://www.sgs.com/en/Terms-and-Conditions.aspx> and, for electronic format documents, subject to Terms and Conditions for Electronic Documents at <http://www.sgs.com/en/Terms-and-Conditions/Terms-e-Documents.aspx>. Attention is drawn to the limitation of liability, indemnification and jurisdiction issues defined therein. Any holder of this document is advised that information contained hereon reflects the Company's findings at the time of its intervention only and within the limits of Client's instructions, if any. The Company's sole responsibility is to its Client and this document does not exonerate parties to a transaction from exercising all their rights and obligations under the transaction documents. This document cannot be reproduced except in full, without prior written approval of the Company. Any unauthorized alteration, forgery or falsification of the content or appearance of this document is unlawful and offenders may be prosecuted to the fullest extent of the law. Unless otherwise stated the results shown in this test report refer only to the sample(s) tested and such sample(s) are retained for 30 days only.

Attention: To check the authenticity of testing/inspection report & certificate, please contact us at telephone: (86-755) 8307 1443, or email: [CN.Doccheck@sgs.com](mailto:CN.Doccheck@sgs.com)

South of No. 6 Plant, No. 1, Pansheng Road, Suzhou Industrial Park, Suzhou Area, China (Jiangsu) Pilot Free Trade Zone 215000  
 中国·苏州·中国(江苏)自由贸易试验区苏州片区苏州工业园区海胜路1号的6号厂房南楼 邮编: 215000

t (86-512) 62992980 www.sgs.com.cn  
 t (86-512) 62992980 sgs.china@sgs.com