

ematic

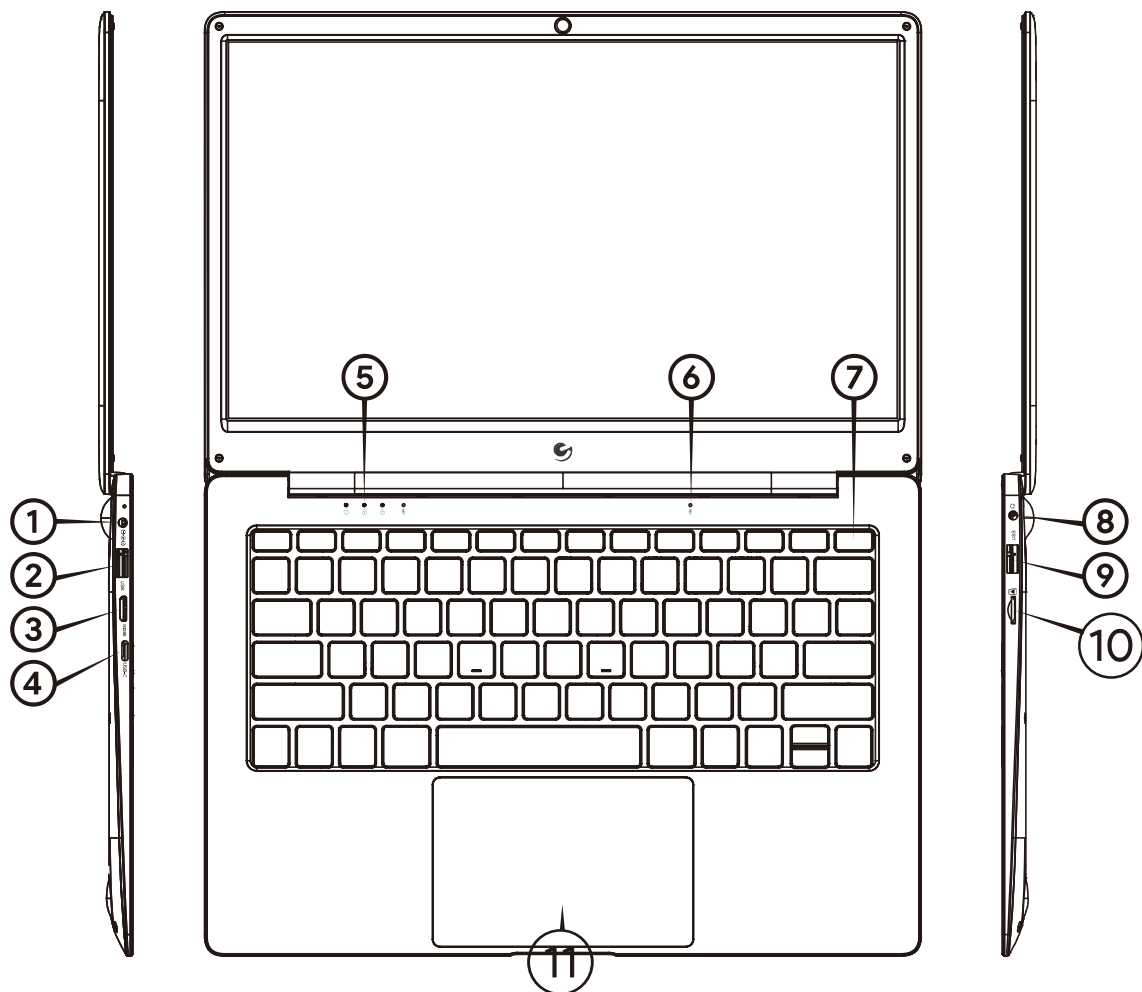
USER MANUAL

EWT148 • 13.3" LAPTOP WITH WINDOWS™ 10

PRECAUTIONS BEFORE USE

1. This product can be used in non-tropic areas below 2,000 meters.
2. Prevent the device from falling to the ground or being strongly impacted.
3. Do not use this product for extended periods of time in environments where it is either too cold, too hot, too humid or with too much dust. Do not expose the device to direct sunlight.
4. Avoid using this device in the strong magnetic and static environments as much as possible.
5. If the device comes into contact with water or any other liquid, immediately shut down the device and wait for it to dry up completely before turning it on again.
6. Do not clean the device with any detergent containing chemicals or any other liquid to avoid causing damage due to corrosion and dampness. If cleaning is absolutely necessary, use a dry, soft cloth or tissue paper.
7. Our company shall not be held responsible for the loss or deletion of material inside the device caused by abnormal software and hardware operation, maintenance, or any other accidents.
8. Please back up important material regularly to avoid loss.
9. Please do not disassemble the device by yourself; doing so will void the warranty rights.

UNIT AT A GLANCE



1. **DC Charging Base:** 12 V / 2 A charger.
2. **USB 3.0 Port:** For faster transfer rate to USB devices.
3. **Mini-HDMI Interface:** High-Definition Multimedia Interface.
4. **USB-C:** For faster transfer rate to USB-C devices.
5. **Indicator Lights:**
 - 1 - The first light from the left indicates that the Power is on.
 - 2 - The second light indicates the Caps Lock in on
 - 3 - The third is the Num Lock indicator. When this light is on, you may use the secondary numeric keypad on the right side of your keyboard.

6. **Microphone:** transmits audio signals.
7. **Power Button:** Press this button to turn your device on or off. This button also allows you to put your device on Sleep Mode or turn it back on from Sleep Mode.
8. **Headphone Jack:** This jack can transmit audio signals to speakers or headphones.
9. **USB 2.0 Port:** Allows you to connect other USB devices.
10. **Micro SD Card Slot:** built-in Memory Card Reader slot that supports Micro SD format up to 64GB.
11. **Touchpad:** Use the touchpad to move your cursor.

INTERFACE INTRODUCTION



Windows 10 Start Menu

You can see many programs fixed on the Start Menu. These applications are displayed in the form of magnets. Magnets let you easily visit apps just by clicking. You need to log on your Microsoft account before the application program completely runs.

Learn more about Windows 10 at:

<https://www.microsoft.com/en-us/windows/features>

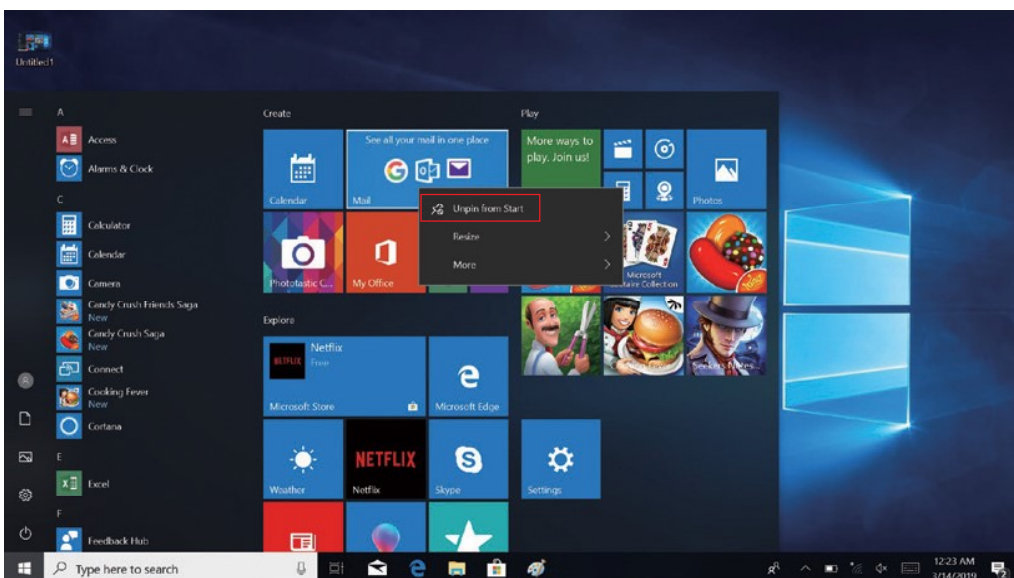
APPLICATIONS INTRODUCTION

In addition to the applications already fixed on the start screen, you can open all applications from the homepage. If you want to add multiple applications to the Start screen, refer to the operation shown below:

- (1) Right-click on the Application icon you wish to pin from the Start Menu
- (2) Select "Pin to Start"



Conversely, if you wish to remove an application from the Start Screen, (1) right-click on the application (2), and then select "Unpin from Start".



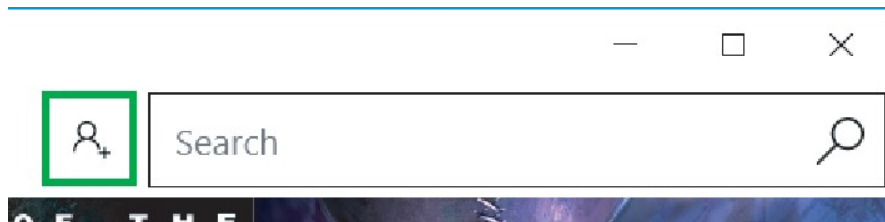
DOWNLOADING APPS



You can download more apps from the Windows Store found on the Windows Start Menu.

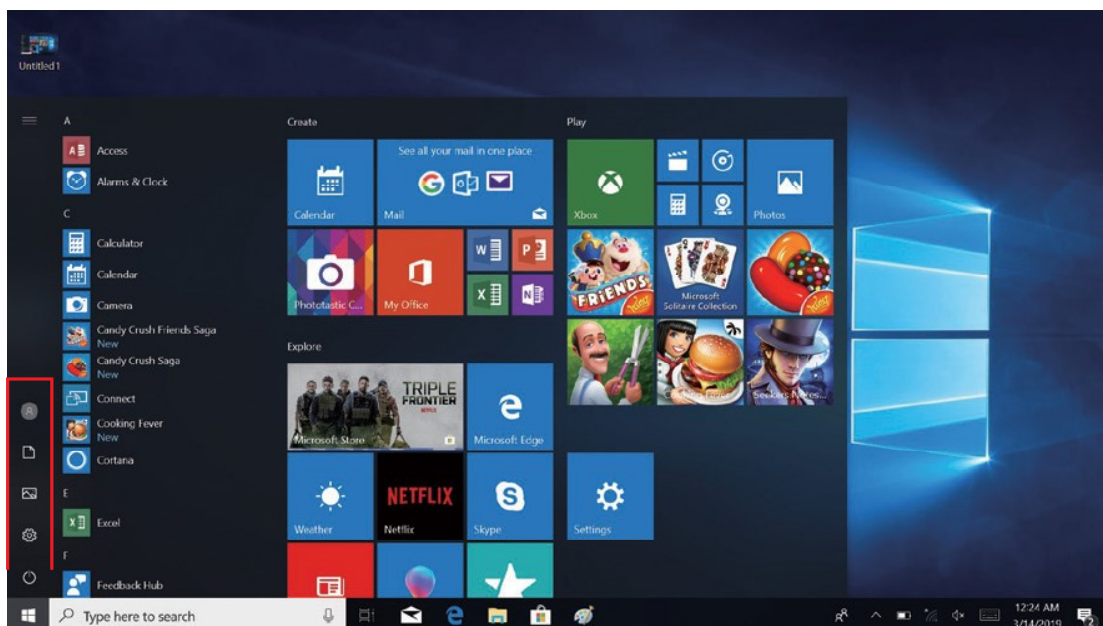
Note: You need a Microsoft account to be able to download apps. You can create an account by logging on to <https://account.microsoft.com/account>

Once you've created an account, go to the Windows Store app on your laptop and sign in by clicking on the icon below:



MENU BAR

The Menu bar is located within your Windows Start Menu, found at the bottom of your screen.





Documents: opens the Documents folder in your PC.



Pictures: Opens the Pictures folder in your PC



Account: allows you to setup, lock and sign out.



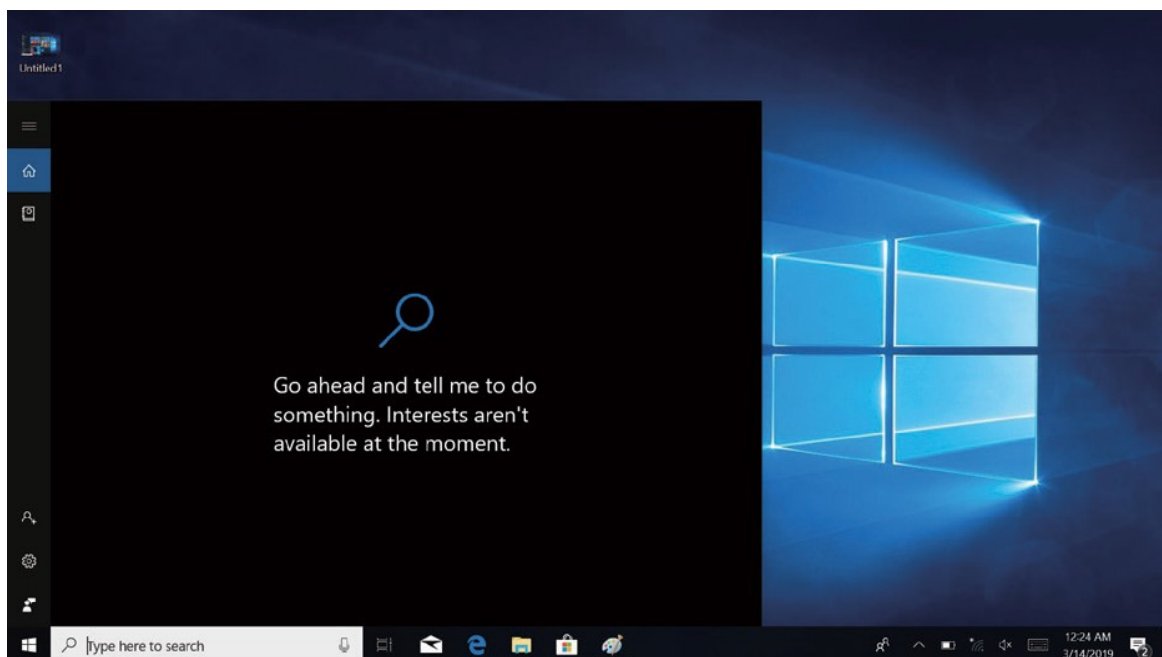
Settings: setup and customize your device



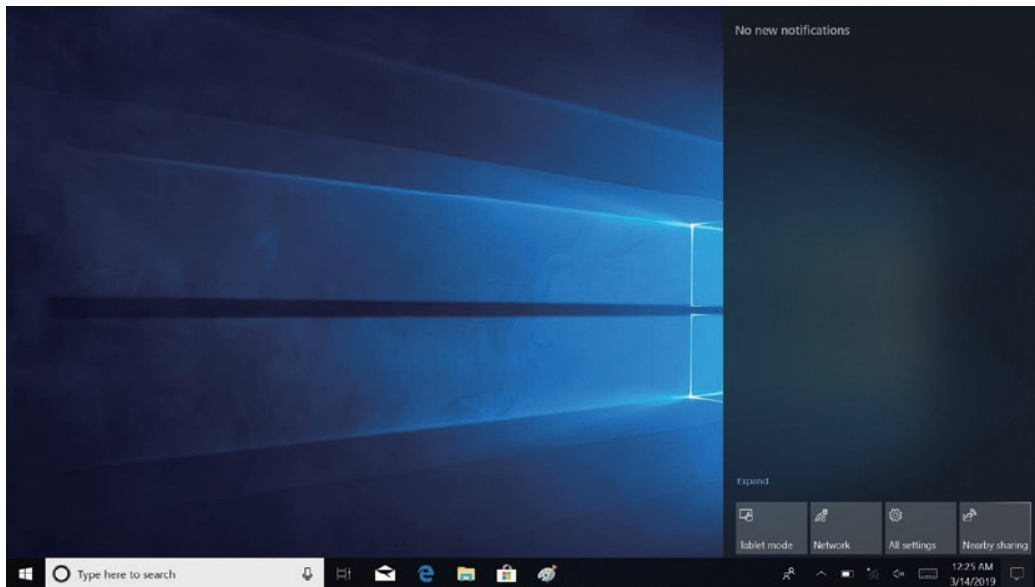
Power: sleep, shutdown, or restart your device.

SEARCH

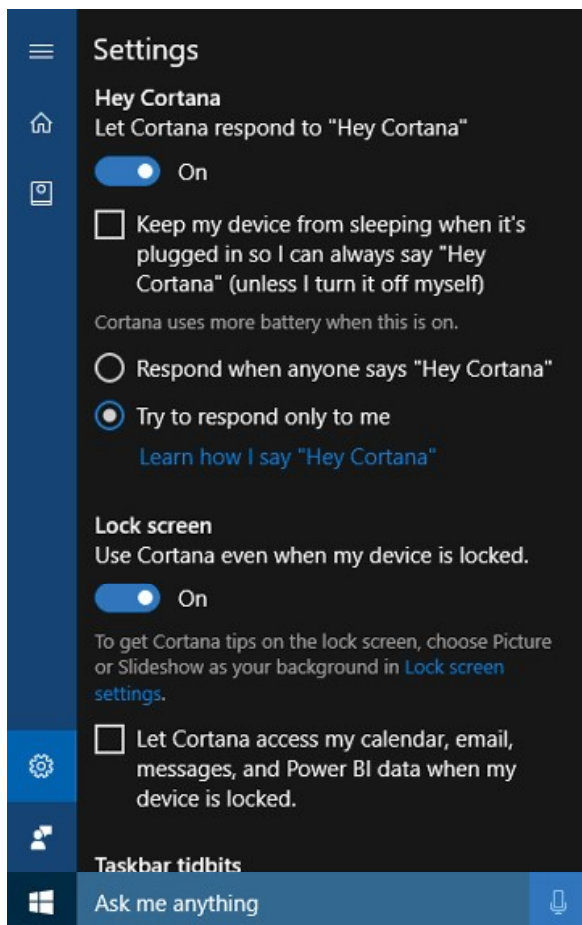
The Search Bar can be found in your Start Menu. Use it to find documents or files stored in your device. You can also use the Search Bar to search for anything on the Web when an Internet Connection has been setup.



You can see notifications on the Action Centre.



CORTANA



What is Cortana?

Cortana is your digital agent. She'll help you get things done. The more you use Cortana, the more personalized your experience will be.

To get started, type a question in the search box, or select the microphone and talk to Cortana. (Typing works but you need a mic to talk.)

You can also set Cortana to respond to "Hey Cortana" from the Settings Menu by clicking on **Start > Cortana > Settings > Cortana & Search Settings**.

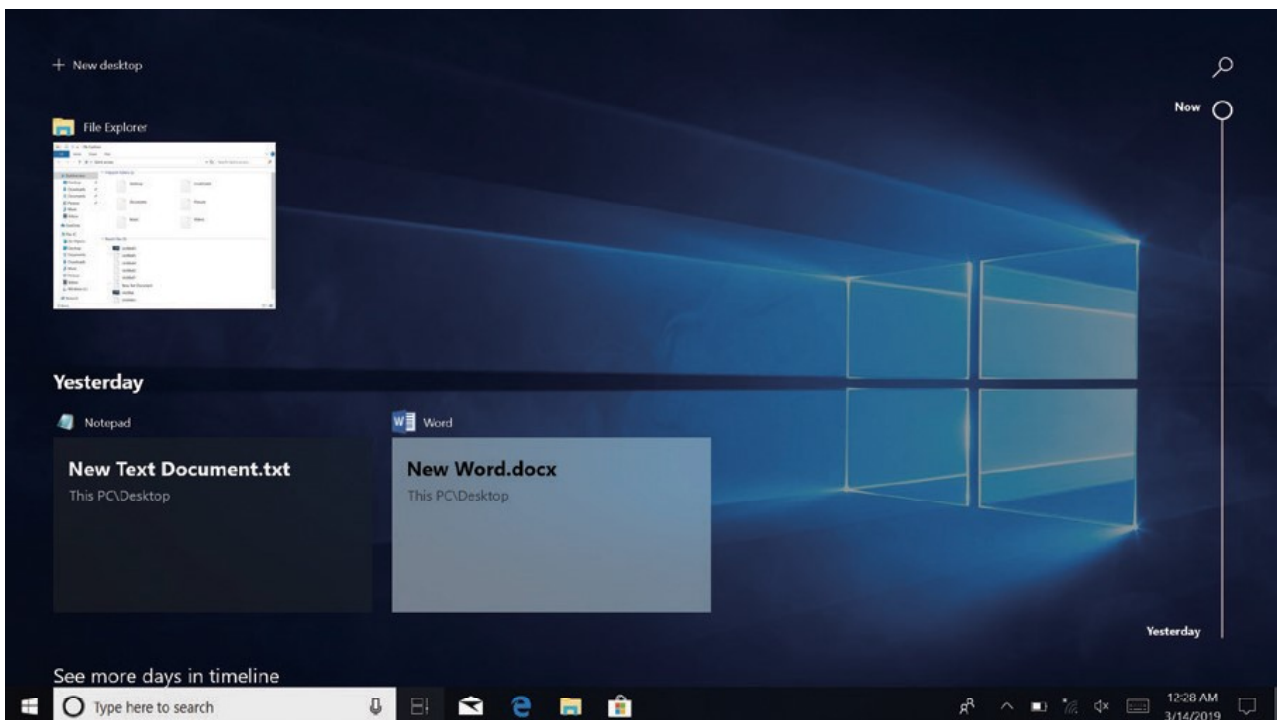
Here are some things Cortana can do for you:

- Give you reminders based on time, places, or people.
- Track packages, teams, interests, and flights.
- Send emails and texts.
- Manage your calendar and keep you up to date.
- Create and manage lists.
- Chit chat and play games.
- Find facts, files, places, and info.
- Open any app on your system.

Note

Cortana is only available in certain countries/regions, and some Cortana features might not be available everywhere.

MULTI-TASKING



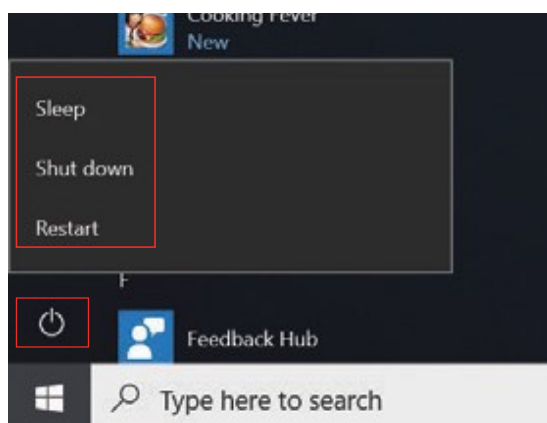
Learn three different ways to multitask and use multiple desktops in Windows 10 S.

1. Select the Task View button, or press Alt-Tab on your keyboard to see or switch between apps.

Learn three different ways to multitask and use multiple desktops in Windows 10 S.

1. Select the Task View button, or press Alt-Tab on your keyboard to see or switch between apps.
2. To use two or more apps at a time, grab the top of an app window and drag it to the side. Then choose another app and it'll automatically snap into place.
3. Create different desktops for home and work by selecting Task View > New desktop , and then opening the apps you want to use.

BASIC OPERATIONS



Clicking on the Power Button gives you access to the Sleep, Restart, and Power Off operations. Briefly press the Power Button to enter Sleep Mode.

SPECIFICATIONS

Operating System	Windows 10
Screen	13.3" 1920x1080 IPS Display
Graphics Card	Radeon™ R5
Processor	AMD® A4 7th Gen A4-9120 Dual-Core Processor
Storage	4GB RAM, 64GB Storage
Connectivity	Wi-Fi 2.4GHz 802.11b/g/n Bluetooth 4.0
Camera	Front Camera 0.3MP
Ports	1 USB 2.0 Port, 1 USB 3.0 Port 1 USB-C Port Mini-HDMI® Port 3.5mm Headphones Jack Supports Micro SD cards up to 64GB
Speakers	SR/2x1W Speaker
Power Adapter	AC/DC 12V/2A
Battery	7.4V 5000mAh

FCC Statement:

This equipment has been tested and found to comply with the limits for a Class B digital device, pursuant to part 15 of the FCC Rules. These limits are designed to provide reasonable protection against harmful interference in a residential installation. This equipment generates, uses and can radiate radio frequency energy and, if not installed and used in accordance with the instructions, may cause harmful interference to radio communications. However, there is no guarantee that interference will not occur in a particular installation. If this equipment does cause harmful interference to radio or television reception, which can be determined by turning the equipment off and on, the user is encouraged to try to correct the interference by one or more of the following measures:

- 1) Reorient or relocate the receiving antenna.
- 2) Increase the separation between the equipment and receiver.
- 3) Connect the equipment into an outlet on a circuit different from that to which the receiver is connected.
- 4) Consult the dealer or an experienced radio/TV technician for help.

Caution: Any changes or modifications to this device not explicitly approved by manufacturer could void your authority to operate this equipment.

This device complies with part 15 of the FCC Rules. Operation is subject to the following two conditions:

(1) This device may not cause harmful interference, and (2) this device must accept any interference received, including interference that may cause undesired operation.

The device has been evaluated to meet general RF exposure requirement. The device can be used in portable exposure condition without restriction.

CUSTOMER SUPPORT

Visit **ematic.zendesk.com** for customer support regarding your device. To submit a request, fill out the required information online. You will be provided a ticket number regarding your issue which you can refer to when contacting us further.

You can also reach an Ematic customer service representative by calling: **1-888-968-1985**.

We are open Monday - Friday 9 AM - 5 PM PST, except weekends and major holidays. Ematic strongly urges customers to email their inquiry before calling, as this will enable us to better assist you.

Our email address is: **customerservice@ematic.us**

Please make sure to include the model number and brief description of the problem you are encountering.

Thank you for purchasing an Ematic product.

©2019 Ematic. All Rights Reserved. Windows and OneDrive are registered trademarks of Microsoft Corp. in the United States and other countries. Intel, the Intel logo, the Intel Inside logo and Intel Atom are trademarks of Intel Corporation in the U.S. and/or other countries. Bluetooth® is a registered trademark of Bluetooth SIG, Inc. Wi-Fi® is a registered trademark of Wi-Fi Alliance. HDMI, the HDMI logo, and High-Definition Multimedia Interface are trademarks or registered trademarks of HDMI Licensing, LLC in the United States and/or other countries. This device complies with part 15 of the FCC Rules. Operation is subject to the following two conditions: (1) this device may not cause harmful interference, and (2) this device must accept any interference received, including interference that may cause undesired operation. Micro SD card not included. 1 year limited warranty from date of purchase, 90 days only on labor.

ematic